

Essentials

- Laminated fabric, 1.5m
- Lining fabric, 40cm
- Stud fastenings, seven
- Matching thread
- Hemming web

Dimensions

Black line: small

Red line: medium

Blue line: large

Note: check child's chest measurement against pattern pieces to determine size

1.5cm seam allowance used throughout.

Cutting guide

Front: cut one pair

Back: cut one on fold

Collar: cut one pair in fabric

Back neck facing: cut one on fold

Sleeve: cut one pair

Hood: cut one pair in fabric and one pair in lining

Sew a child's mac

1 Visit www.sewmag.co.uk/templates to download and print the pattern. Cut out the pieces as indicated in the cutting guide. With right sides together, match and pin the shoulder seams together and stitch. Match the two collar pieces with right sides together, pin and stitch. Trim the bulk from the corners, turn out to the right side and press, covering the collar with a pressing cloth.

2 Match the centre of the back neck facing and centre of the neck edge of the collar together, then pin. Clip into the seam allowance around the neck. Match the front edges of the collar to the notches on the front coat and pin. Continue pinning the remainder of the collar and stitch in place. Match the shoulder edges at the tops of the front facings to the shoulder edges of the back neck facing. With the fabric right sides together, stitch both shoulder seams.

3 Bring the front and back neck facings back over the neckline, fold the front facing along the fold line marked on the pattern, match and pin in place; the collar will be sandwiched between the coat and the facings. Stitch around the neckline, creating a small step in front of each end of the collar. Trim the bulk from the corners, turn to the right side and press flat with a pressing cloth. Secure the facings to the shoulder seams of the coat with a few hand stitches. Match and pin the back and front side seams together, then stitch. Press the seams open with a pressing cloth.

4 Adjust the stitch length to a large gathering stitch and sew one row within the seam allowance at the top of the sleeves, between the notches. Return to a normal stitch length and match, pin and stitch the sleeves seams together, making two tubes. Pull the gathering threads slightly to tighten the heads to fit the armholes, match the notches in the armhole and the sleeves (the two notches indicate the back of the sleeve). Pin the sleeves in place, then stitch. Fold and press up 3cm hems at the base of the sleeves and use hemming web and a pressing cloth to fasten in place.



5 Turn the facing at the hem edge of each front piece back on itself along the fold line marked on the pattern, measure up the 2cm hem and stitch across at this measurement. Trim the bulk from the corners and turn the facings to the inside of the coat. With a pressing cloth, turn and press up the 2cm hem in line with the base

of the front facings, using hemming web to fasten in place.

6 Repeat steps 6-7 of adult mac (p26) to create hood and add stud fastenings.

CONTINUED OVERLEAF

Size S-M-L

sew style

Essential waterproof

child's rain mac

Get puddle-jumping ready with our cute coat

If you thought our dachshund raincoat was adorable (p26), we think you'll love this mini version just as much! The sweet jacket is ideal for youngsters when frolicking outside as it can easily be wiped clean after any splashes from muddy puddles. If you've not worked with laminate fabrics before, be sure to stitch slowly to prevent it from puckering and consider using clips to hold the pieces together, as pins will leave permanent holes.

Sew advice

BEST FOOT FORWARD

When stitching the oil cloth, it's best to fit a Teflon foot to your sewing machine because a normal foot will drag on the surface of the fabric.

"To prevent unravelling, always back tack at the beginning and end of a seam, make a couple of forward stitches and reverse!"

Amanda Walker, designer

the
haberdashery

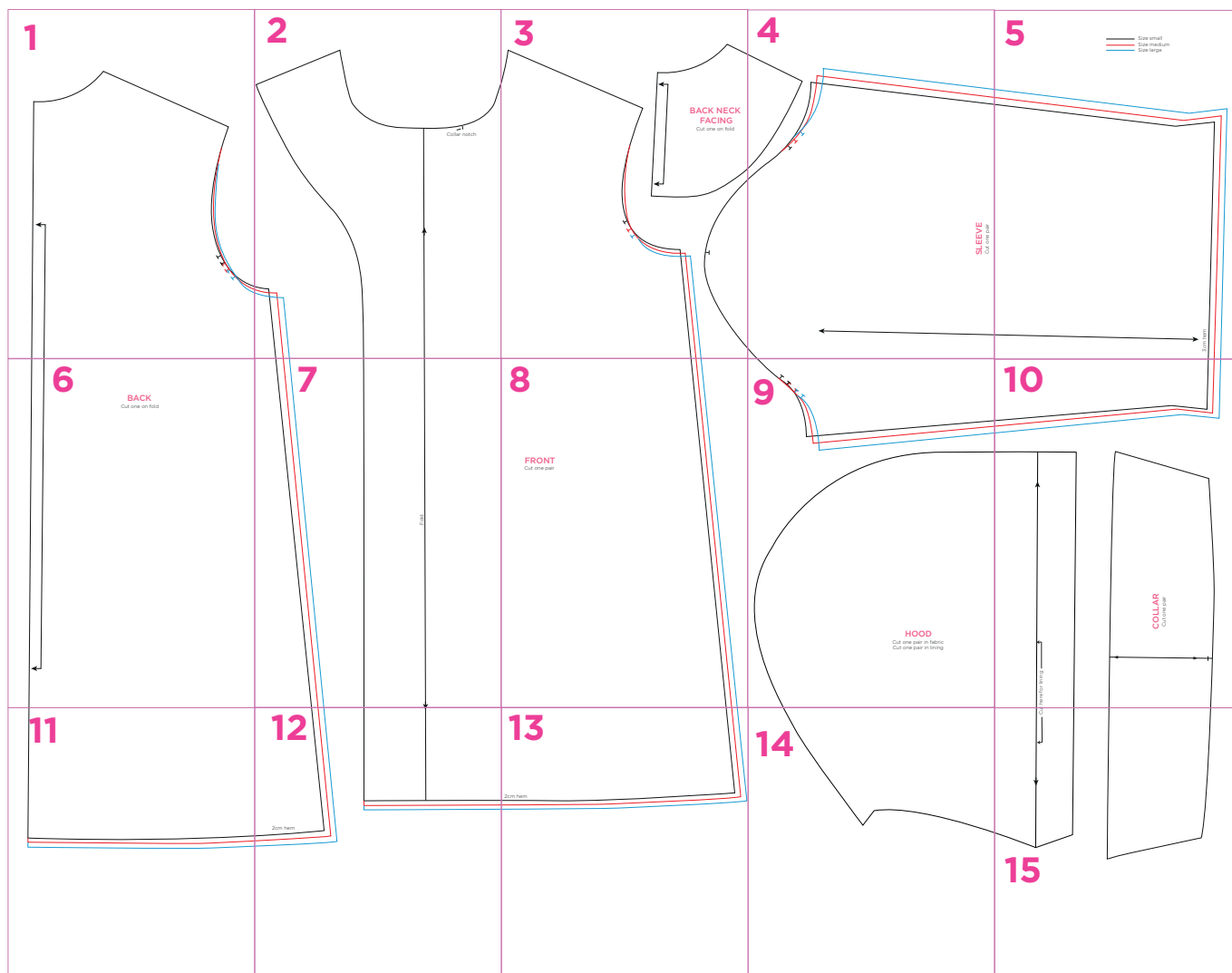


Singin' in the rain

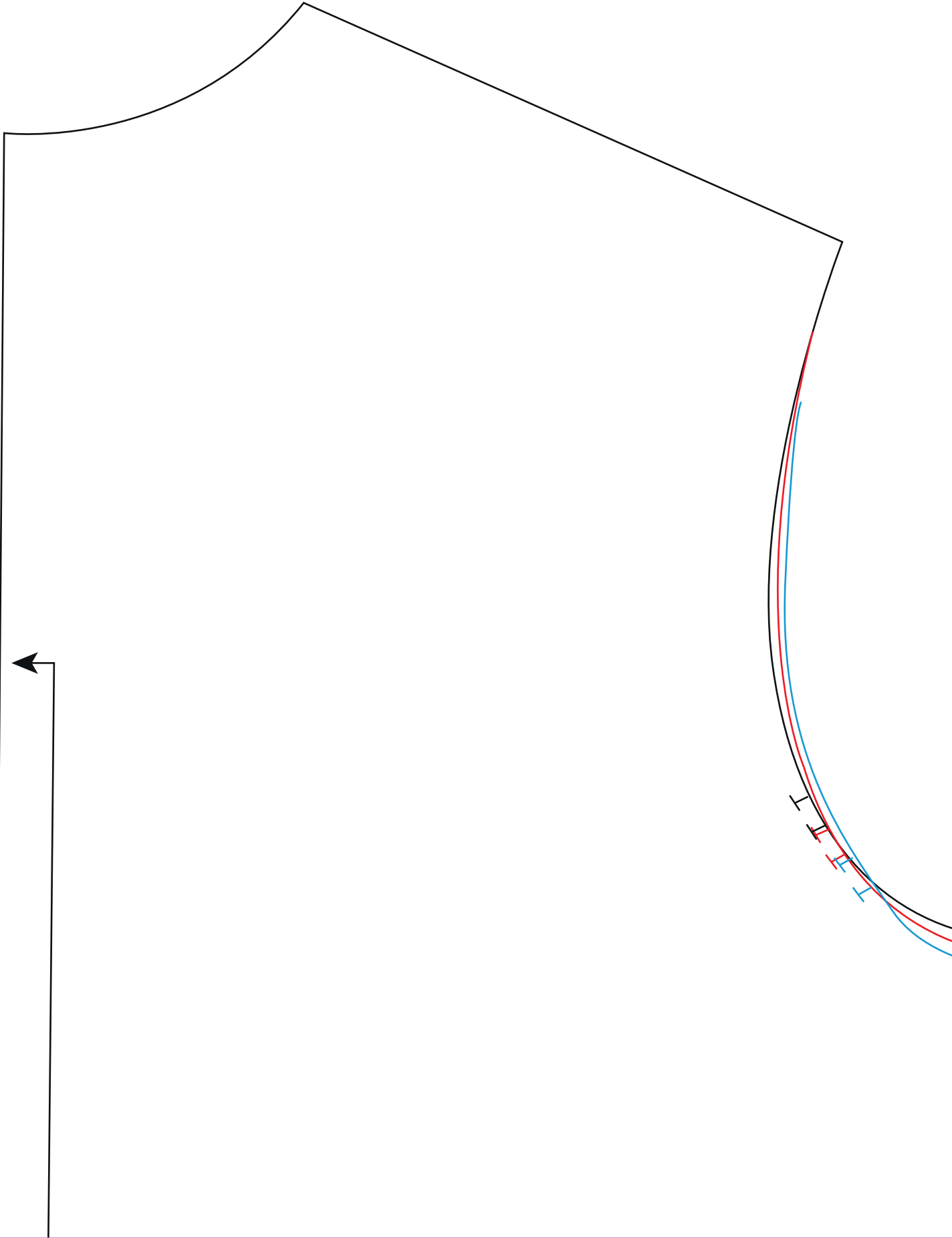
We used this fun print from the Laminates range by Cloud 9. To find your nearest stockist, visit www.hantex.co.uk/cloud9



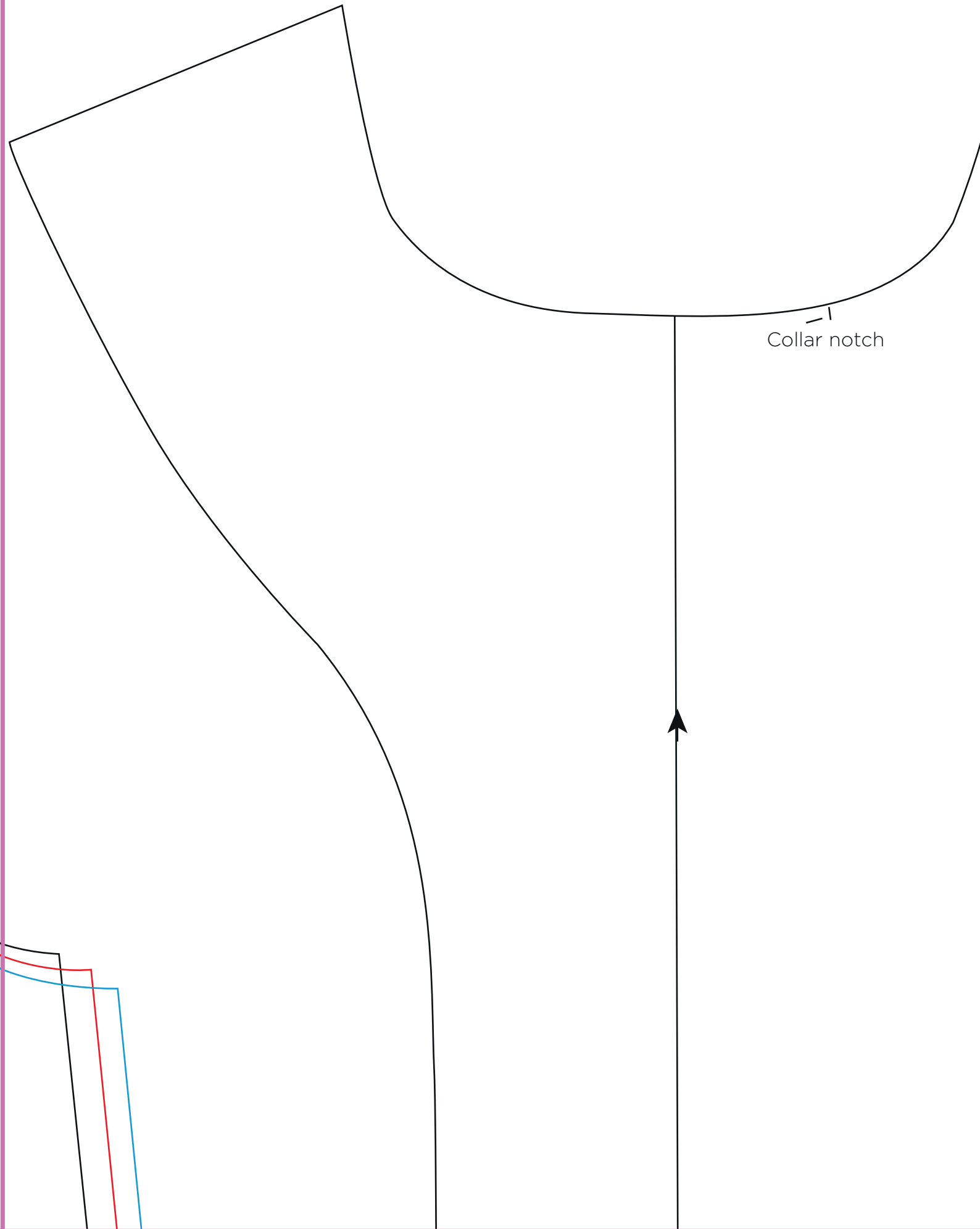
Размер	Рост	Возраст
S	110-116	3-5
M	122-128	6-8
L	134-140	8-9
XL	146-152	9-10
2XL	158-164	11-12



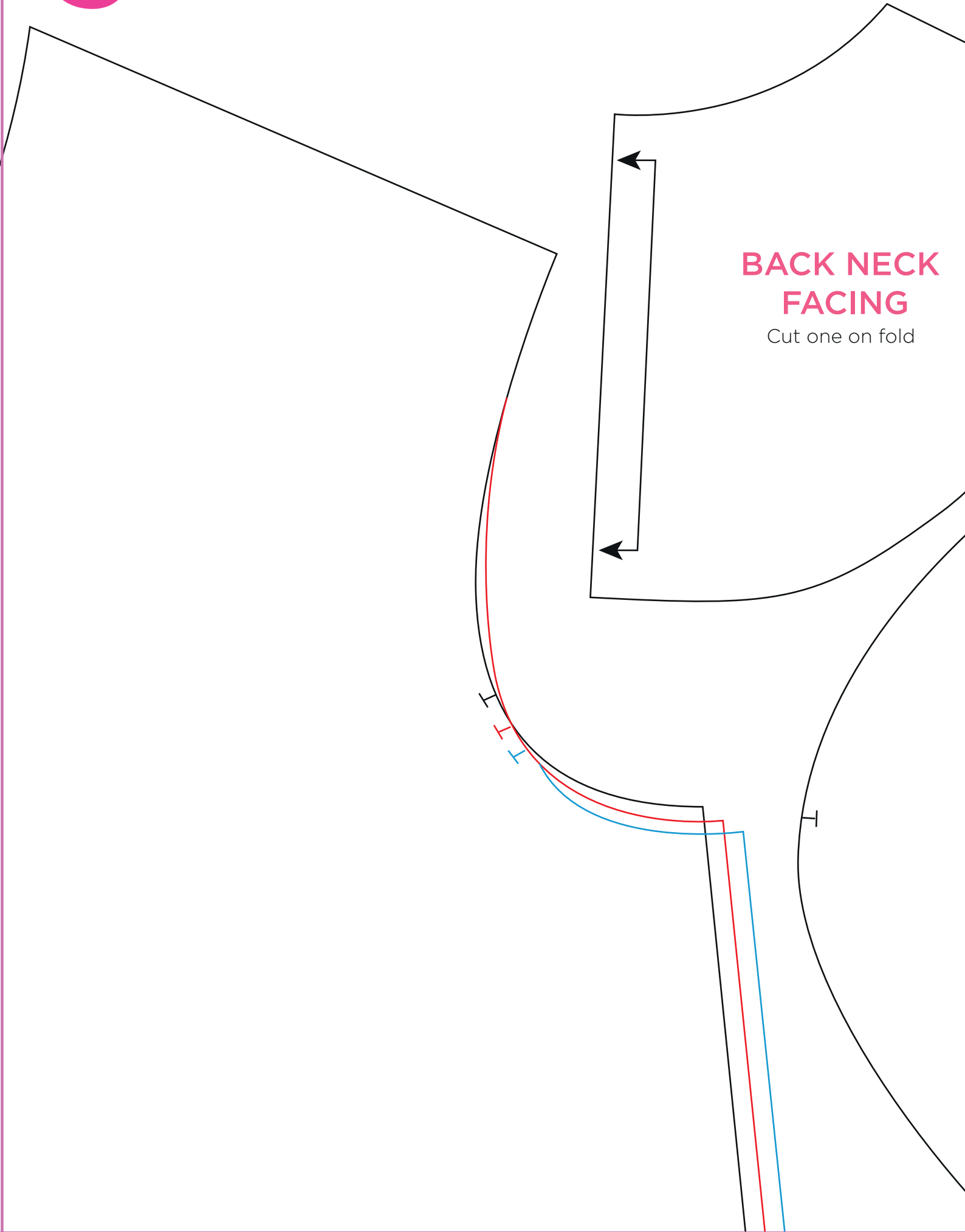
1



2



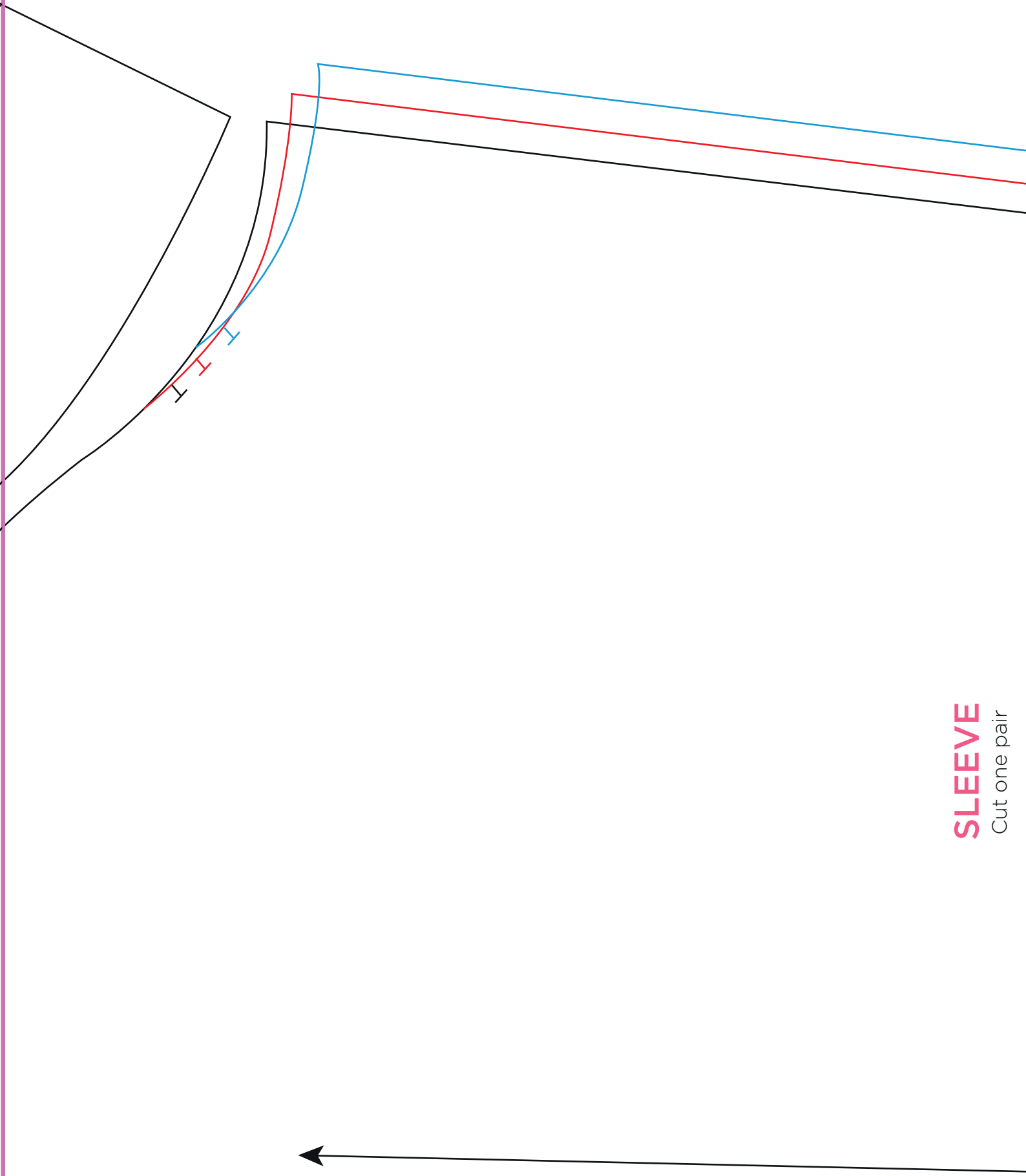
3



BACK NECK FACING

Cut one on fold

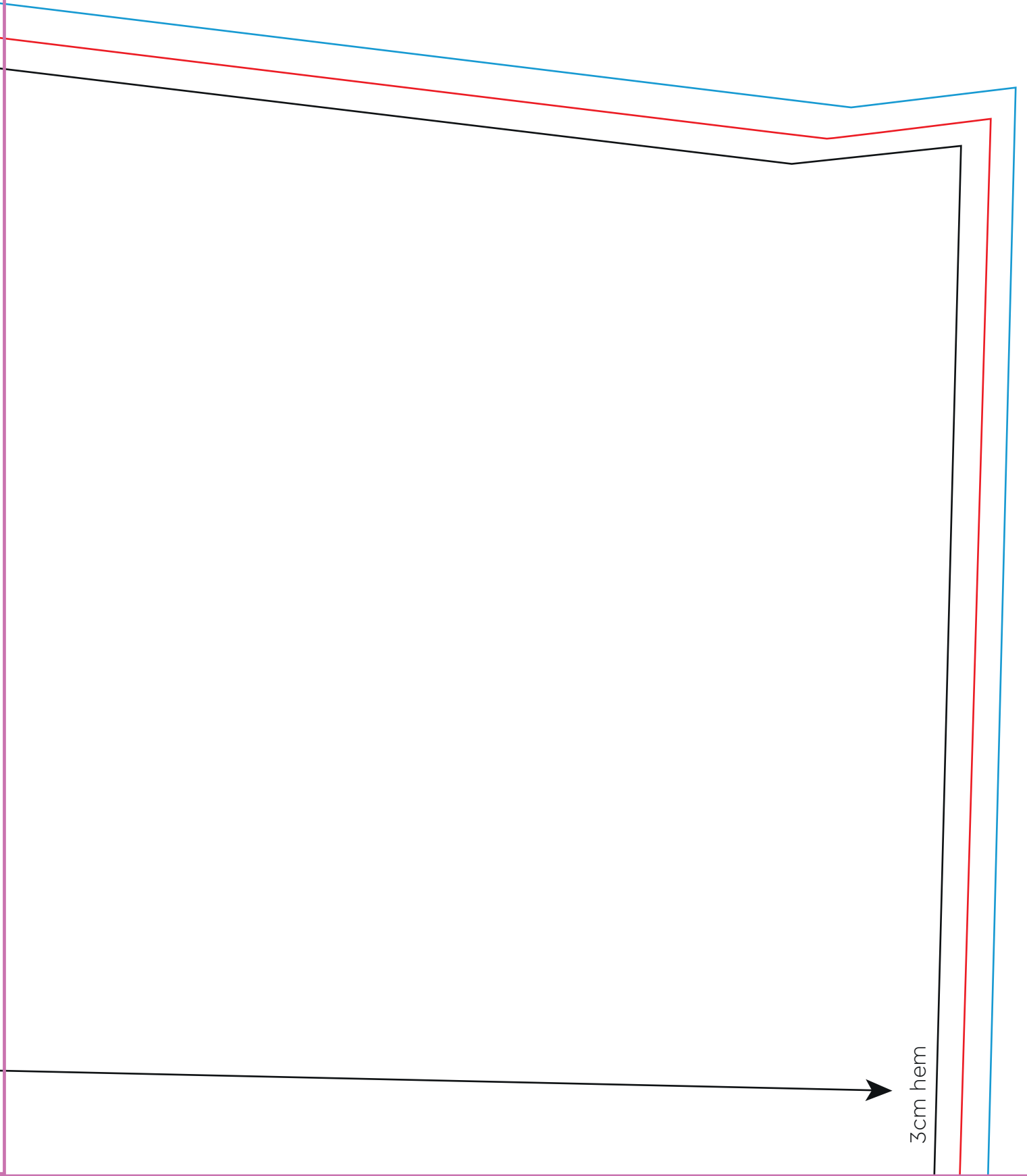
4



SLEEVE
Cut one pair

5

- Size small
- Size medium
- Size large



6

BACK

Cut one on fold



7

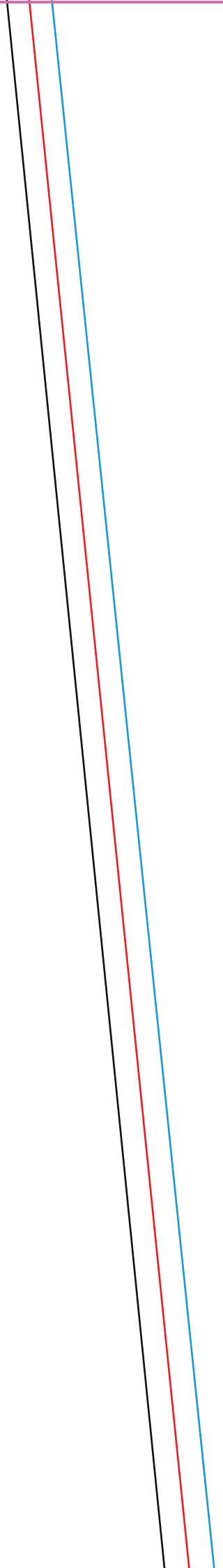
Fold



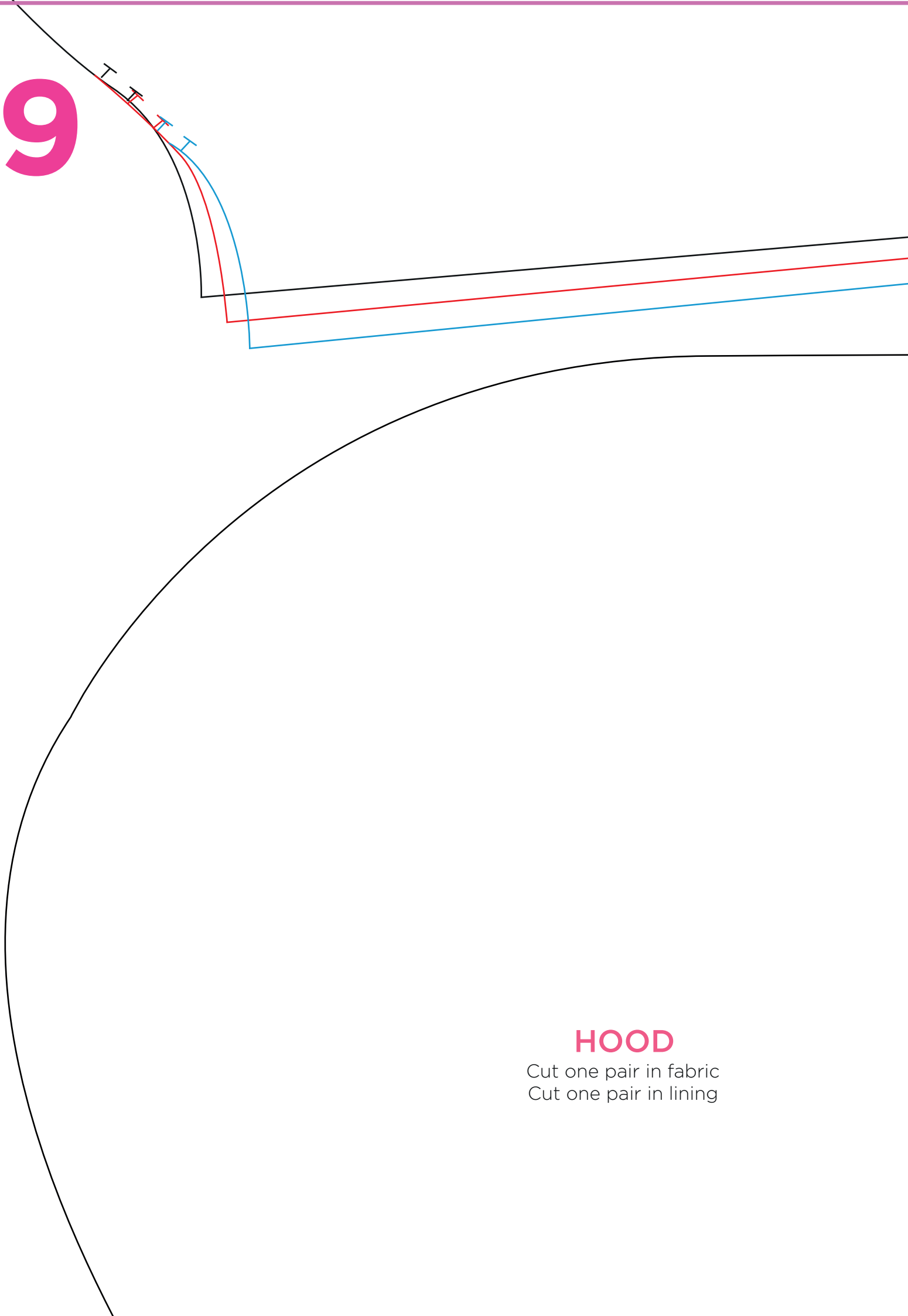
8

FRONT

Cut one pair



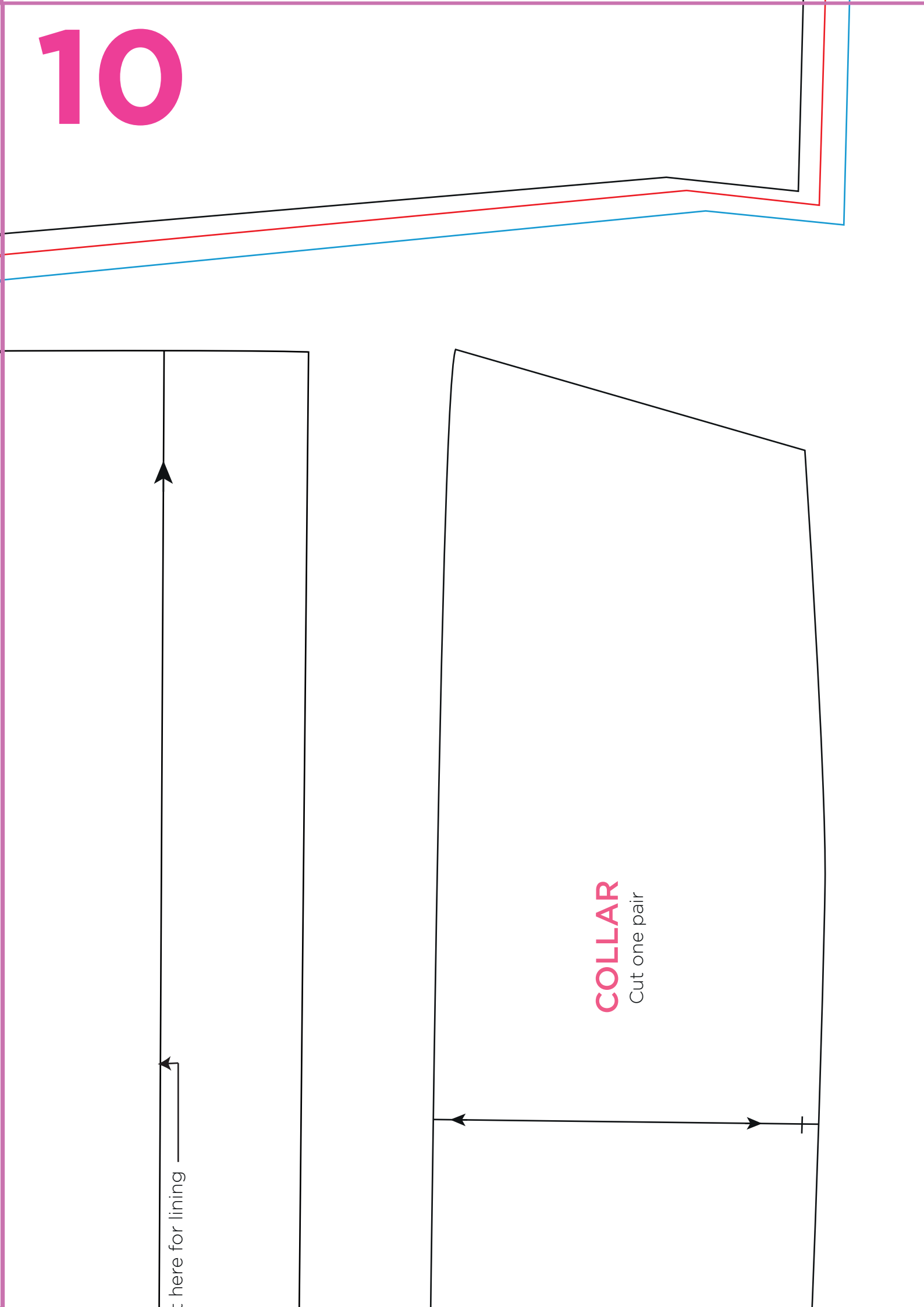
9



HOOD

Cut one pair in fabric
Cut one pair in lining

10



here for lining

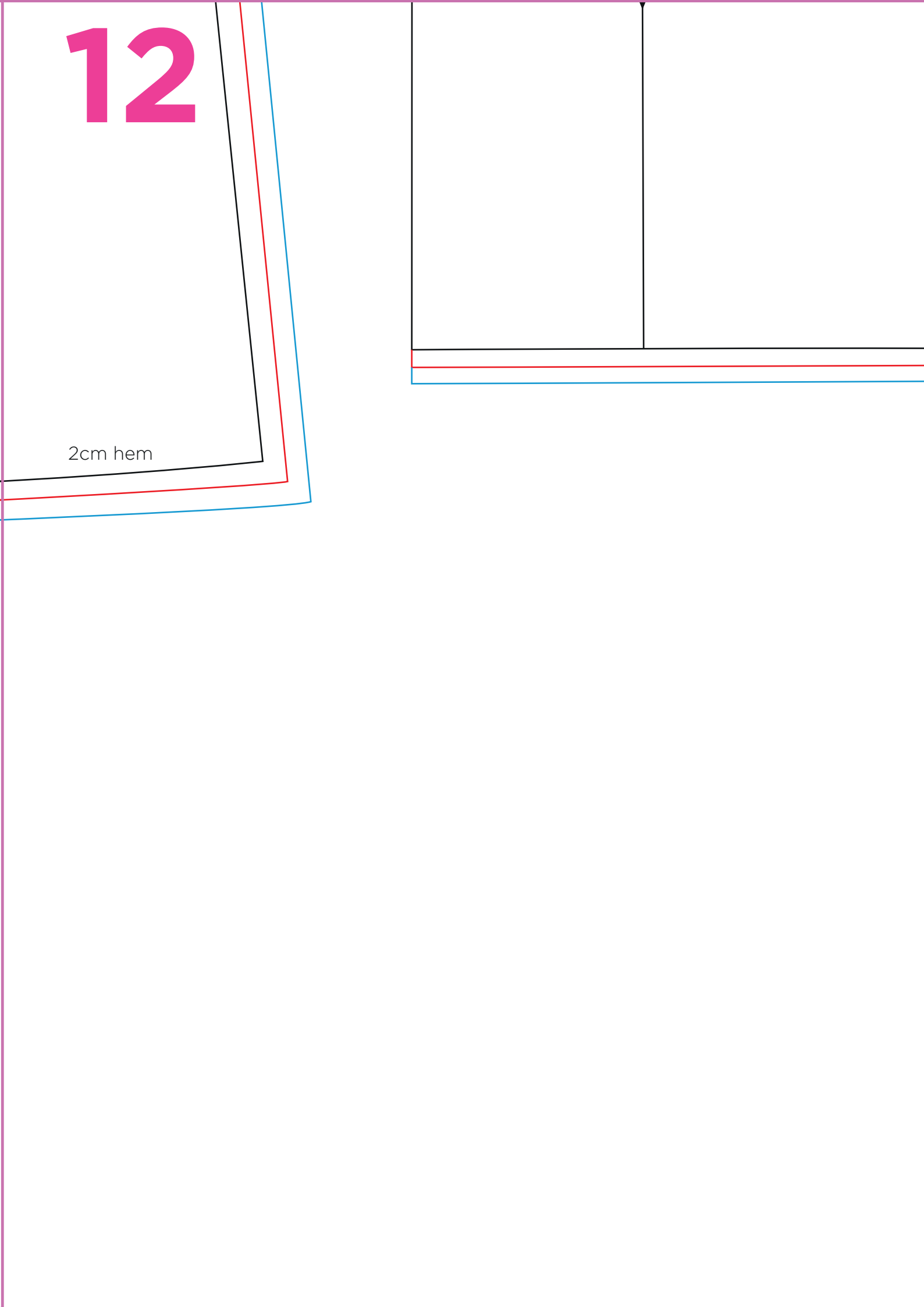
COLLAR
Cut one pair

11



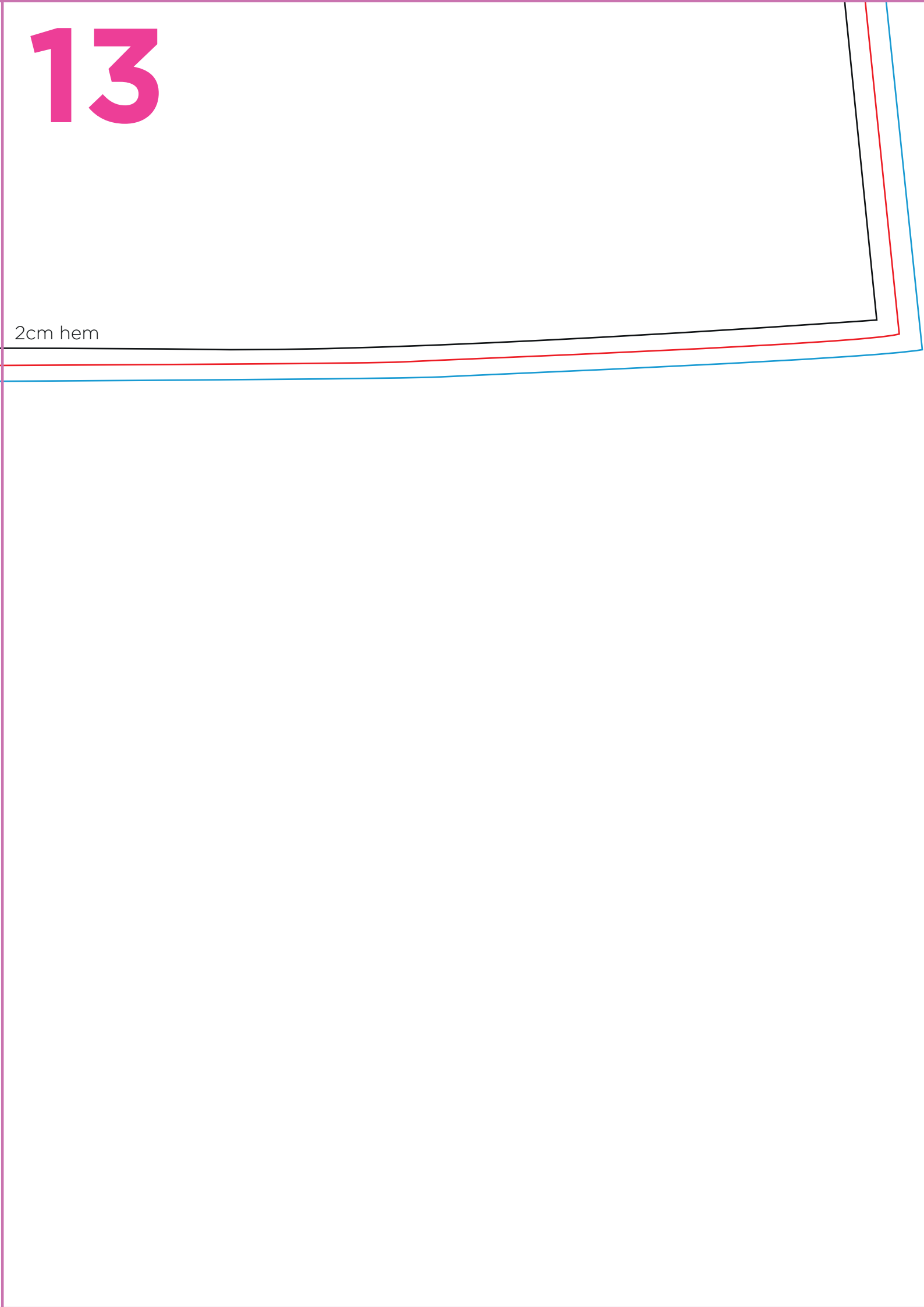
12

2cm hem

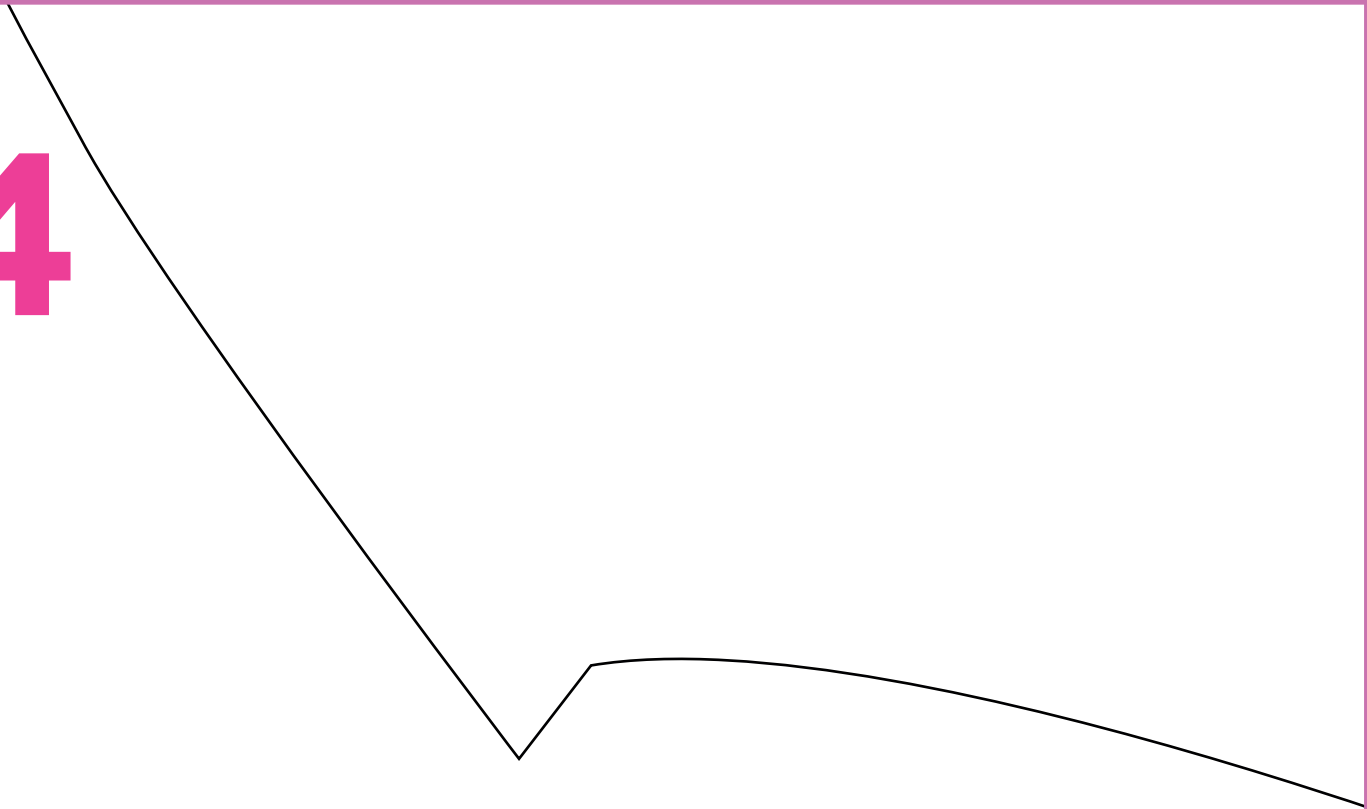


13

2cm hem



14



Cu



15