


1 in"



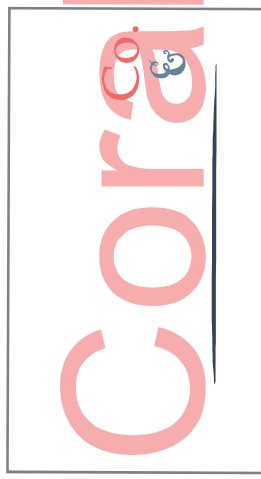
© Copyright Coral & Co. 2014. Patterns may be used for personal use only.



Not Bow Headband Pattern

Cut 2

Kr



Place on Fold

0-3 Months

6-12 Months

18 Months

2T

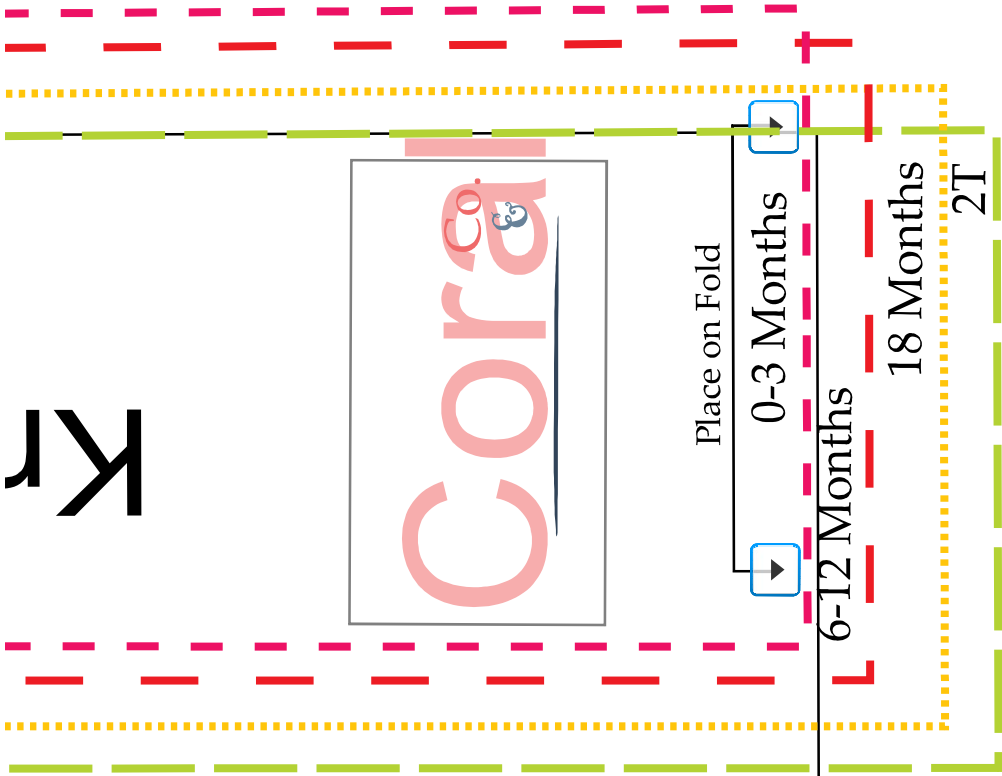


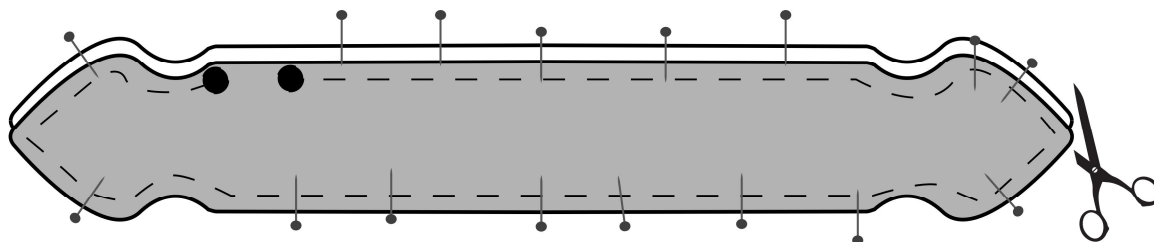
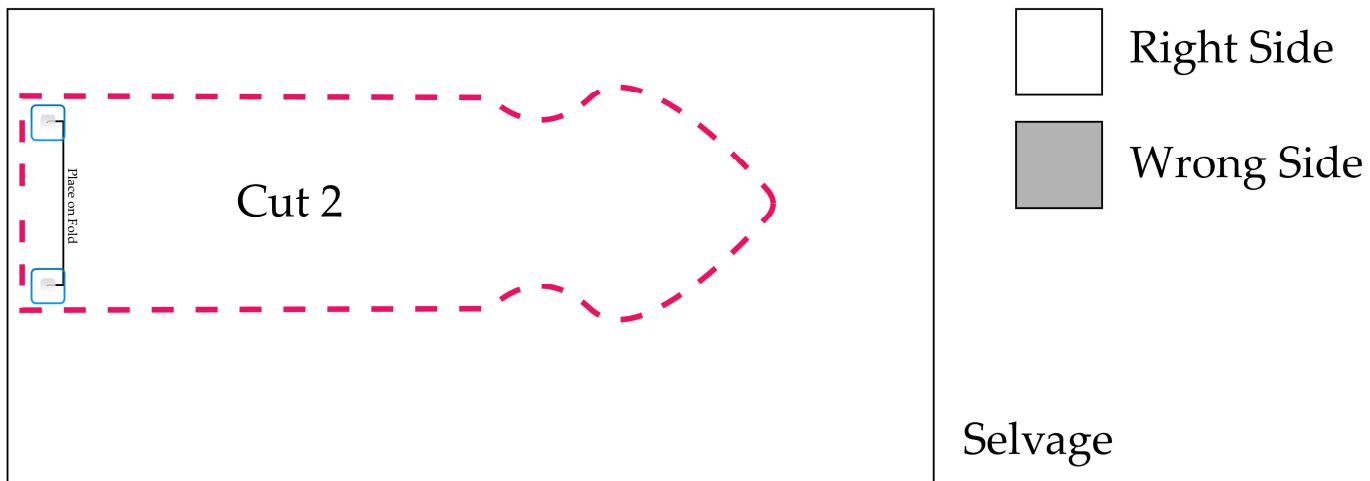
0-3 Months

6-12 Months

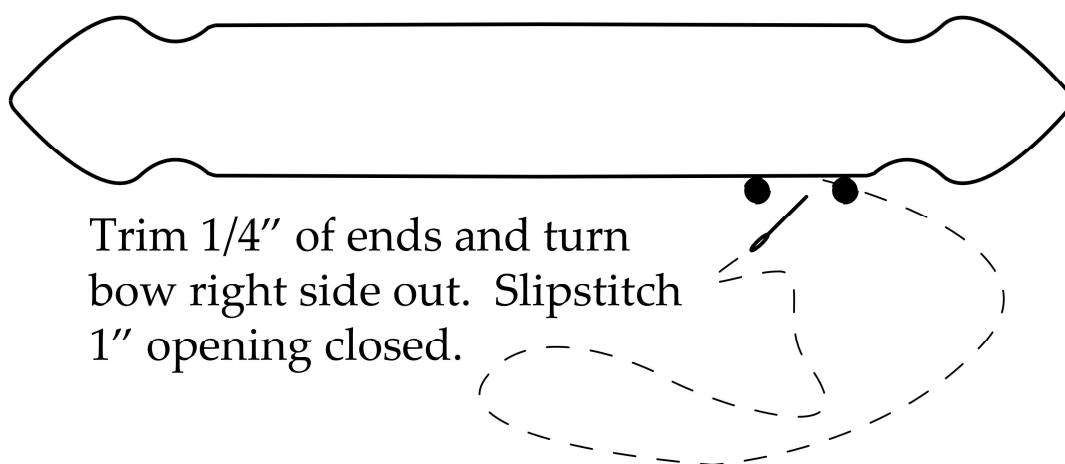
18 Months

2T





With WST sew around edge using 1/2" seam, starting and stopping at dot marks leaving a 1" opening.



Trim 1/4" of ends and turn bow right side out. Slipstitch 1" opening closed.

Tada! You are all done :)