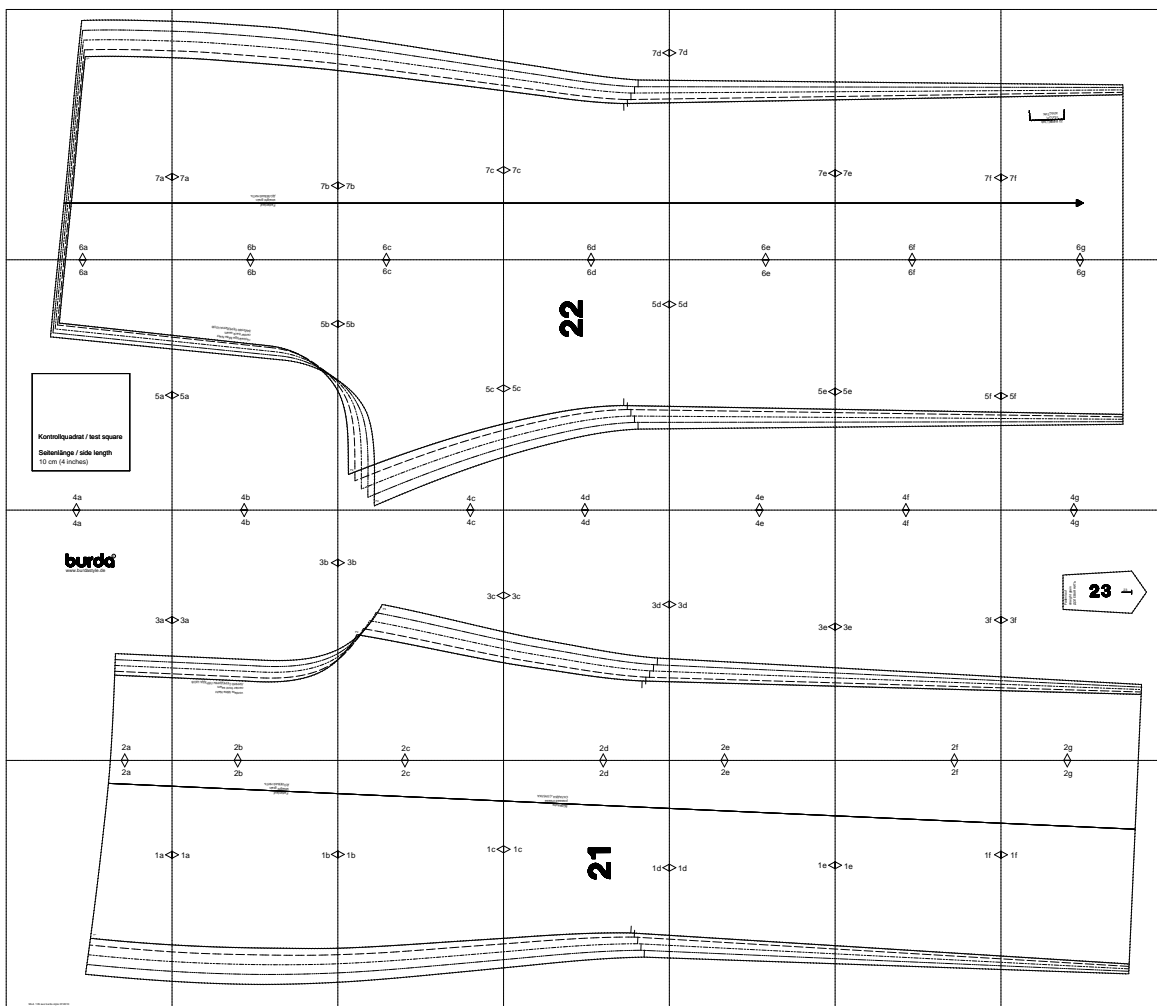


burda Download-Schnitt

Modell 135 Burda Style 07/2010



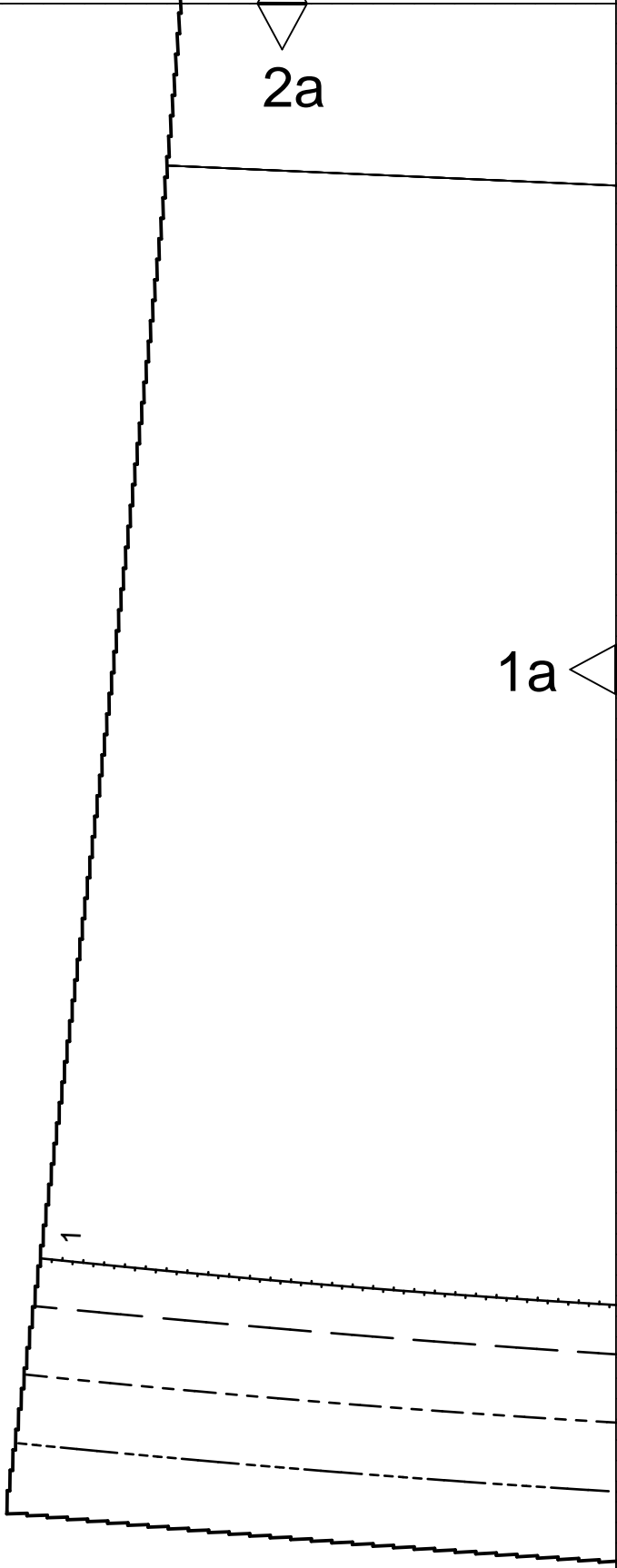
Copyright 2010 by Verlag Aenne Burda GmbH & Co. KG, Am Kestendamm 1, D-77652 Offenburg

Sämtliche Modelle, Schnittteile und Zeichnungen stehen unter Urnehmerschutz, gewerbliches Nacharbeiten ist untersagt.

Der Verlag haftet nicht für Schäden, die durch unsachgemäße Handhabung des Schnitts, der Materialien, unsachgemäße Ausführung der Tipps und Anleitungen oder unsachgemäße Nutzung der Modelle entstehen.

2a

1a

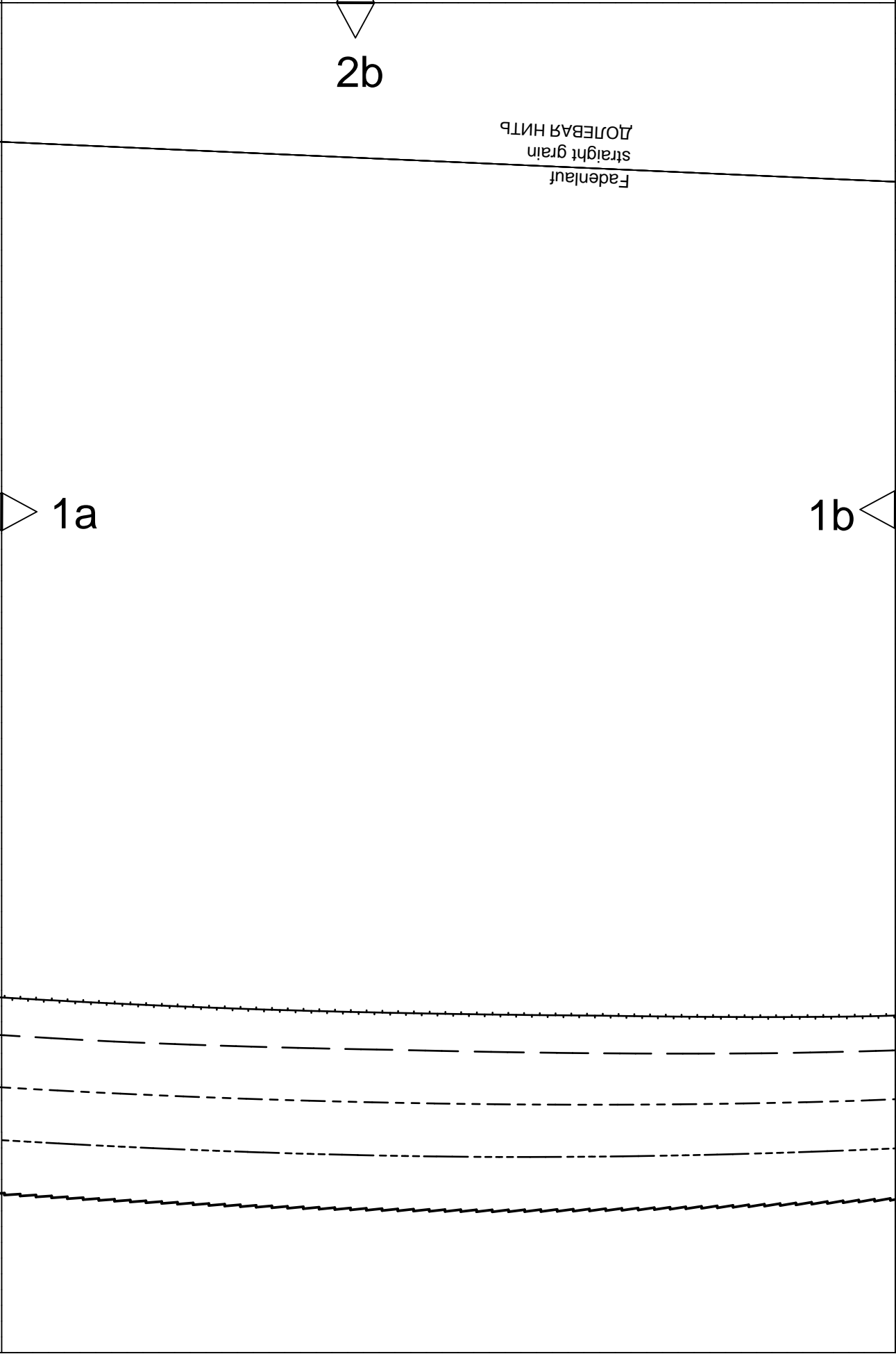


2b

ДОЛБЕВАЯ НИТЬ
straight grain
Fadenlauf

1a

1b





A diagram showing a rectangular frame with a solid line at the top and a solid line at the bottom. The top line is slightly downward-sloping. The bottom line is slightly upward-sloping. Between these two lines, there are four more lines: a dotted line, a dashed line, a dash-dot line, and a solid line, all slightly upward-sloping. Three labels with arrows point to specific features: '2c' at the top center with a downward-pointing arrow, '1b' on the left side with a rightward-pointing arrow, and '1c' on the right side with a leftward-pointing arrow.

2c

1b

1c

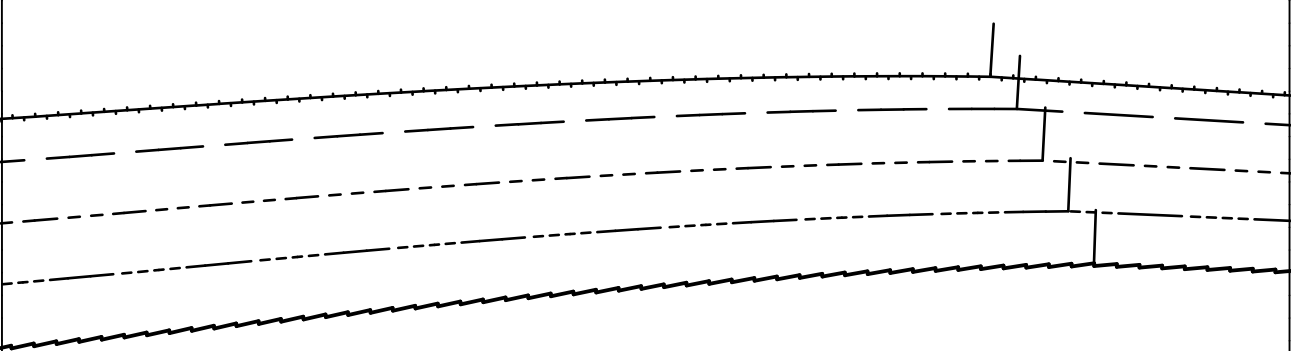
2d

Бүгелтэйгээ
pressed crease
СКЛАДКА-СРЕЗКА

1c

12

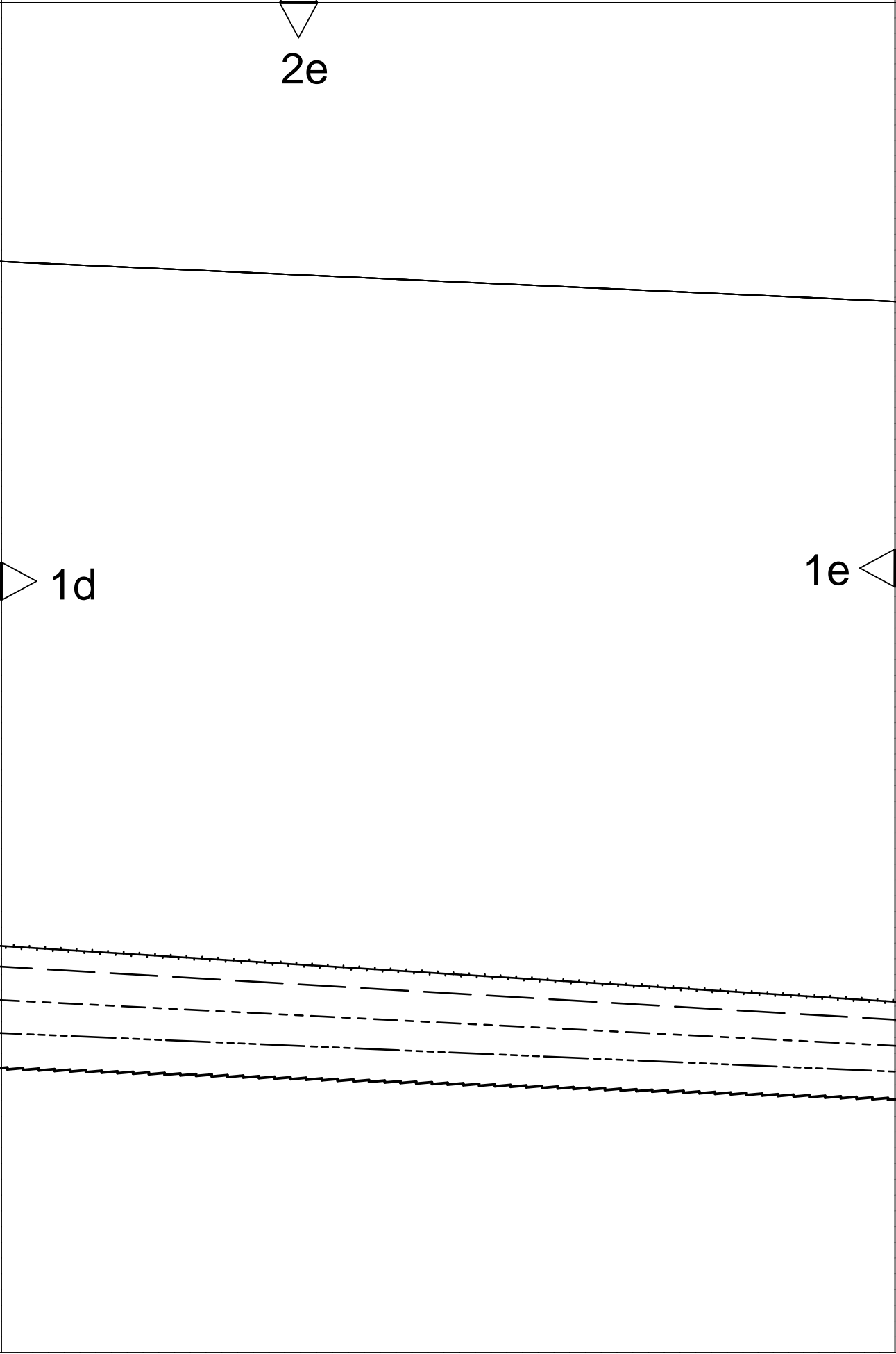
1d



2e

1d

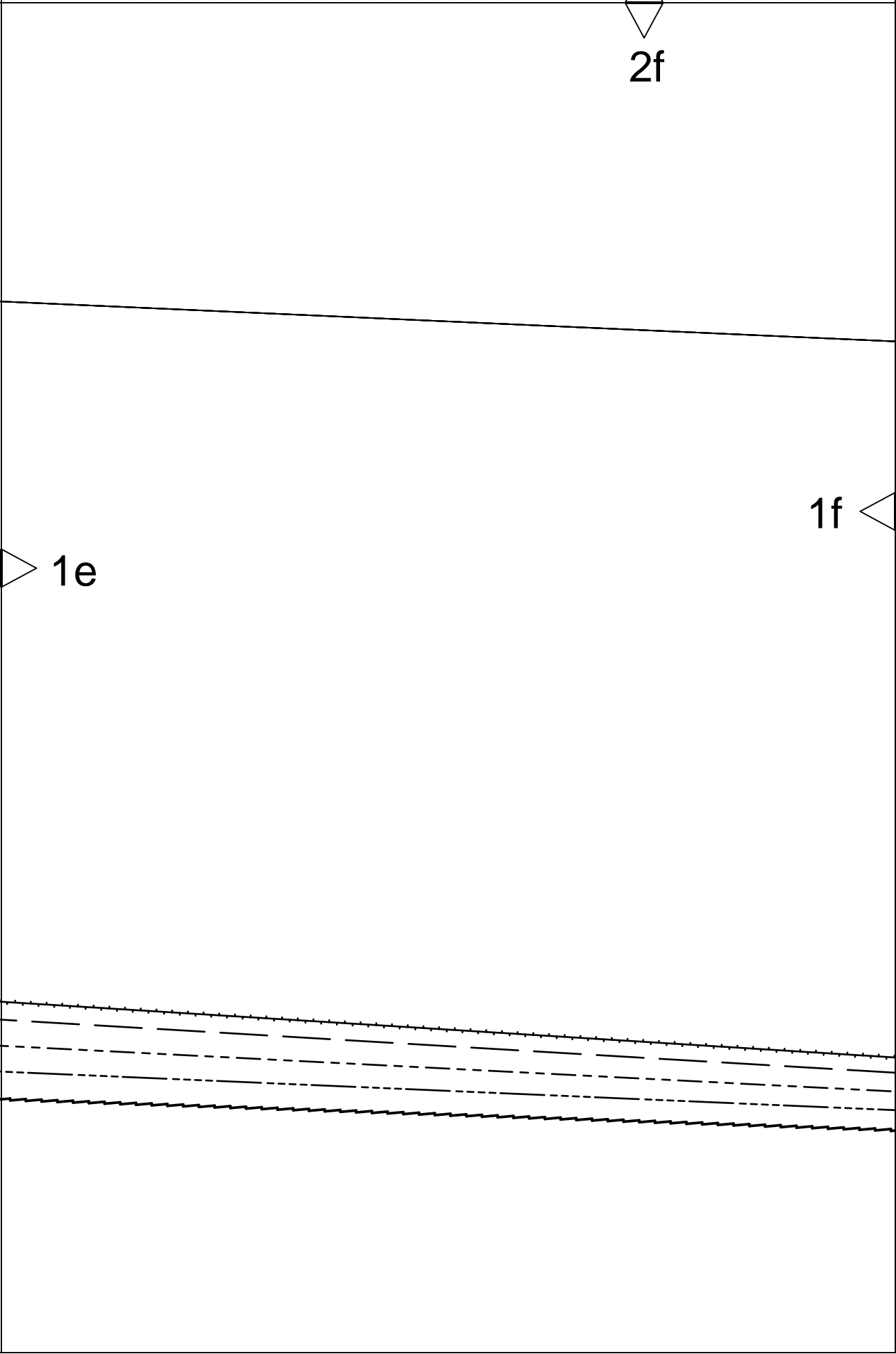
1e



2f

1f

1e



A diagram showing a trapezoidal cross-section. The top edge is a solid line, and the bottom edge is a dashed line. The left side is a solid vertical line, and the right side is a dashed vertical line. A horizontal solid line is drawn across the upper portion of the trapezoid. A horizontal dashed line is drawn across the lower portion of the trapezoid. The area between the solid and dashed lines is filled with a pattern of horizontal lines. The label '1f' is on the left side, and '2g' is at the top center.

2g

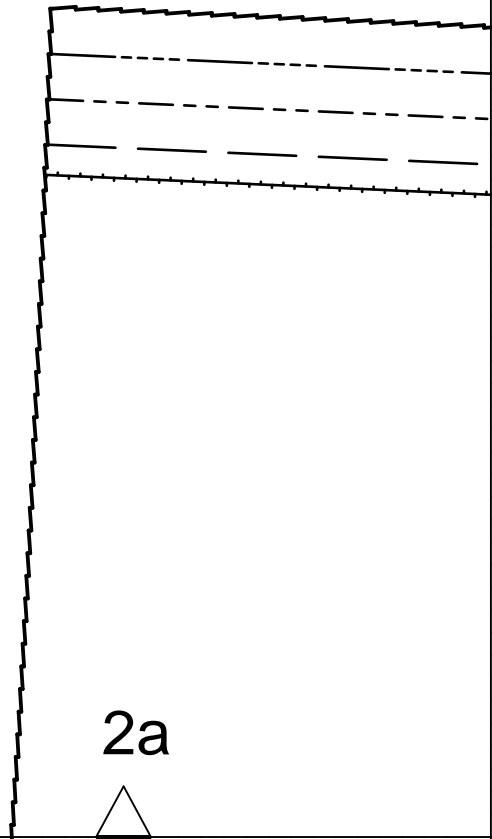
1f

4a

burda[®]
www.burdastyle.de

3a

2a



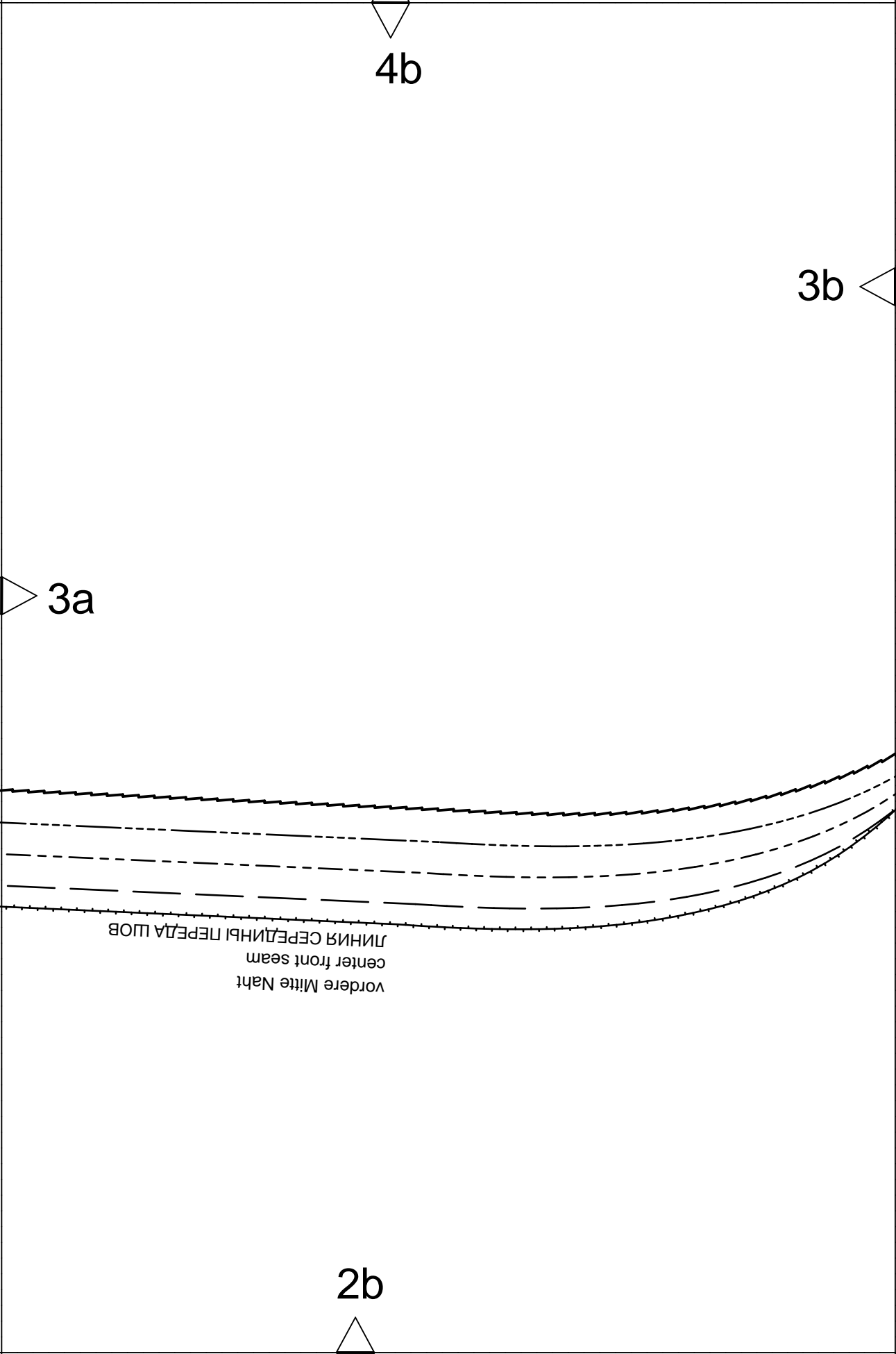
4b

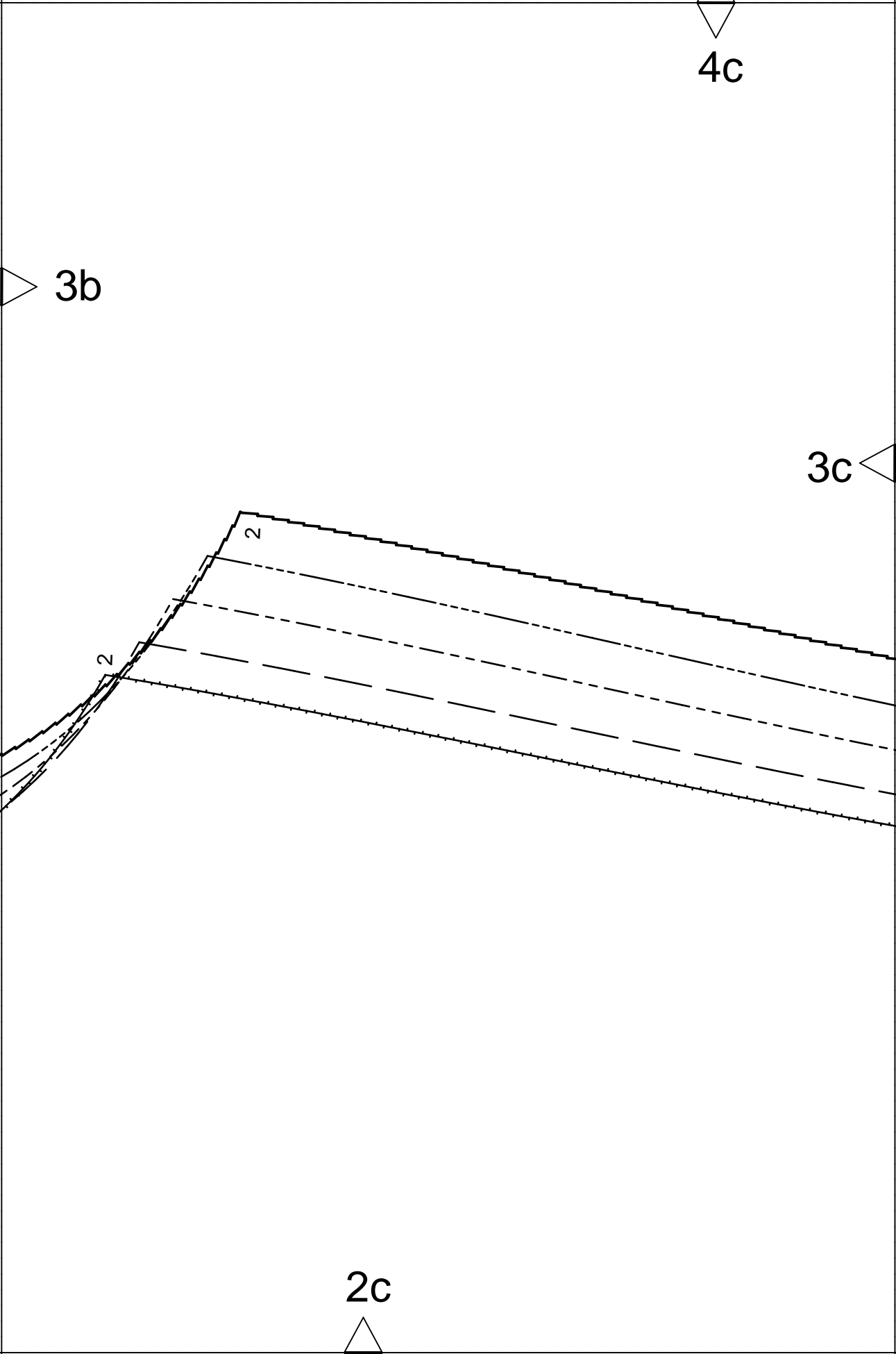
3b

3a

Линия переделки перелашов
center front seam
vordere Mitte Naht

2b





4d



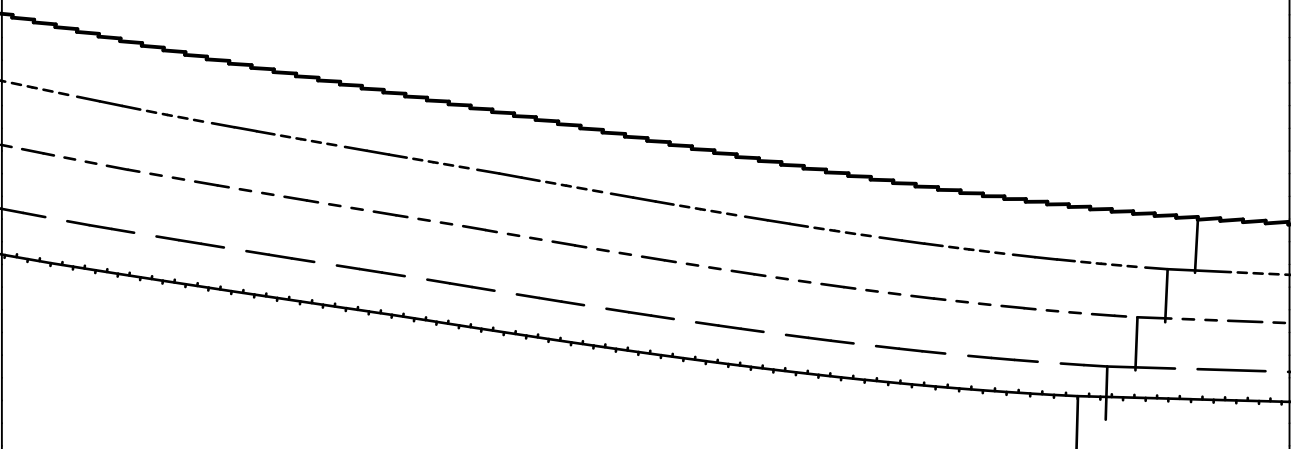
3c



3d



2d

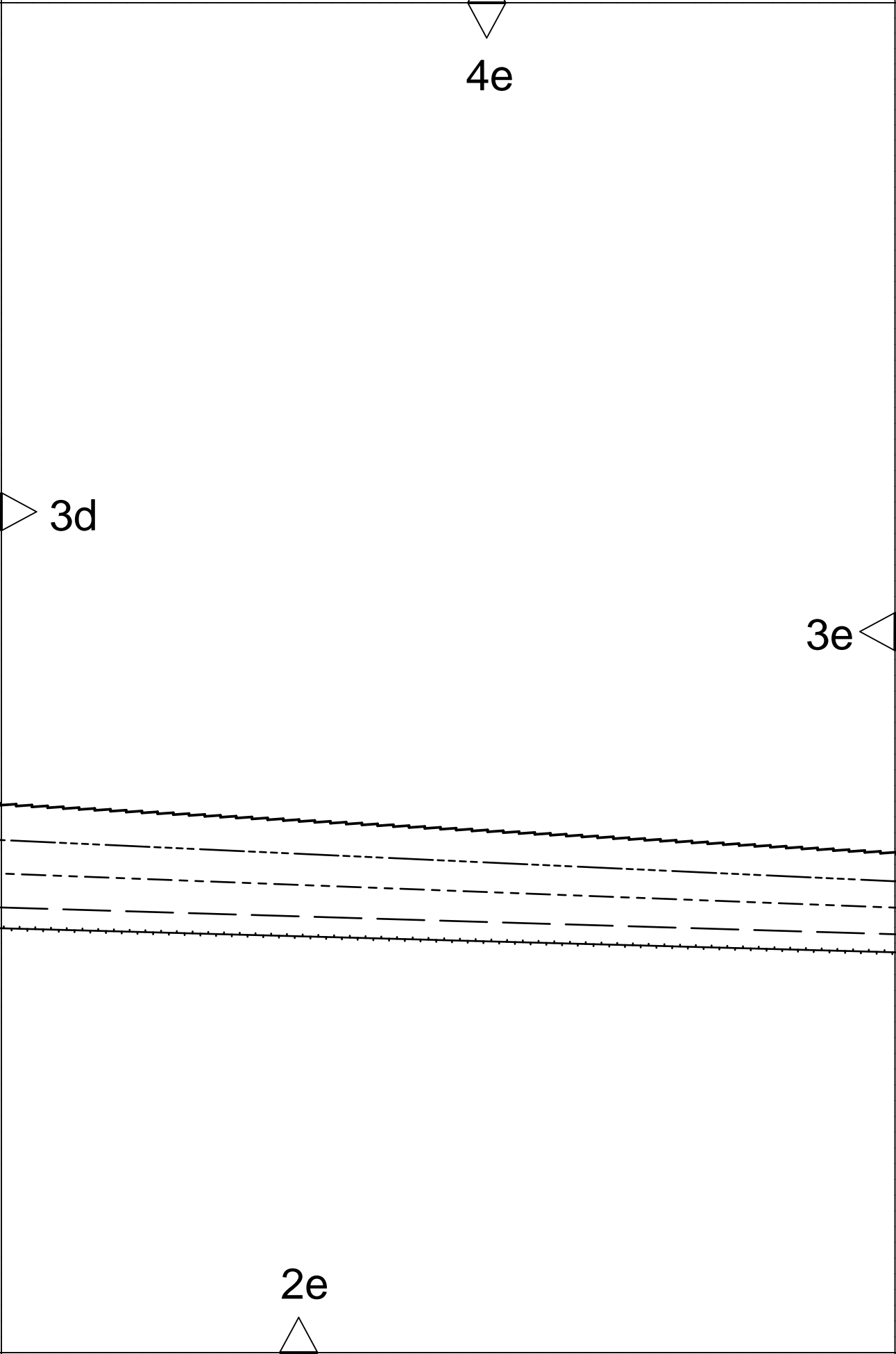


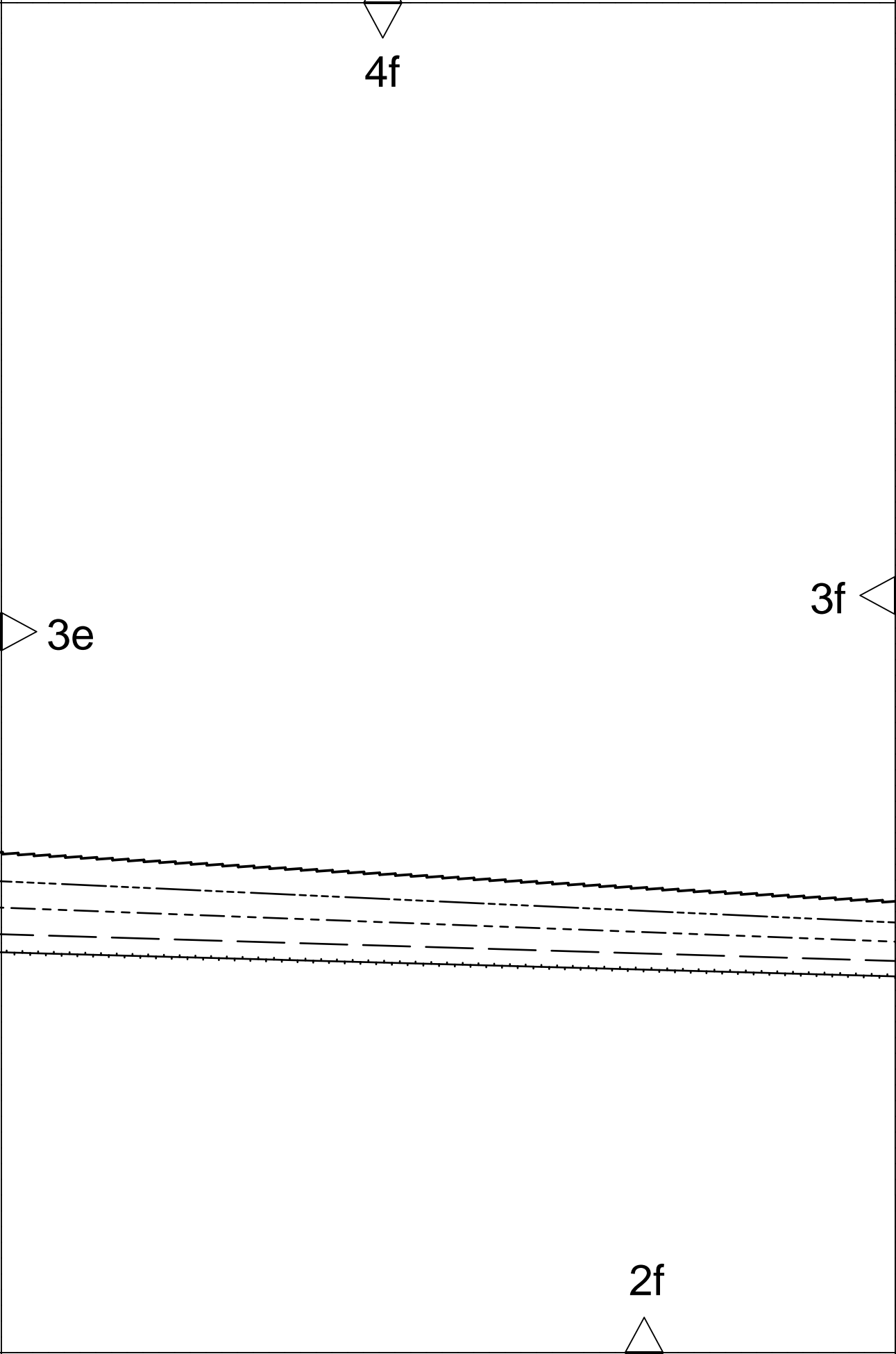
4e

3d

3e

2e





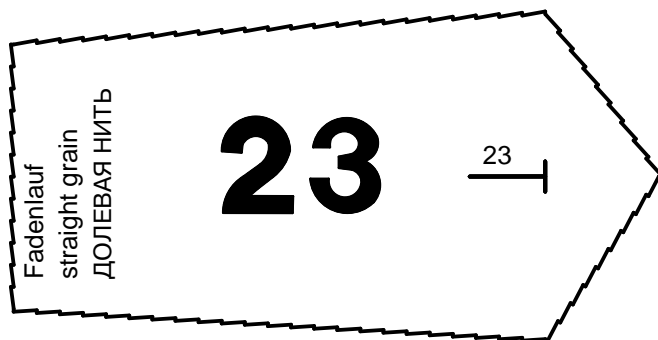
4f

3e

3f

2f

4g



3f

2g



6a



5a

Kontrollquadrat / test square

Seitenlänge / side length
10 cm (4 inches)



4a

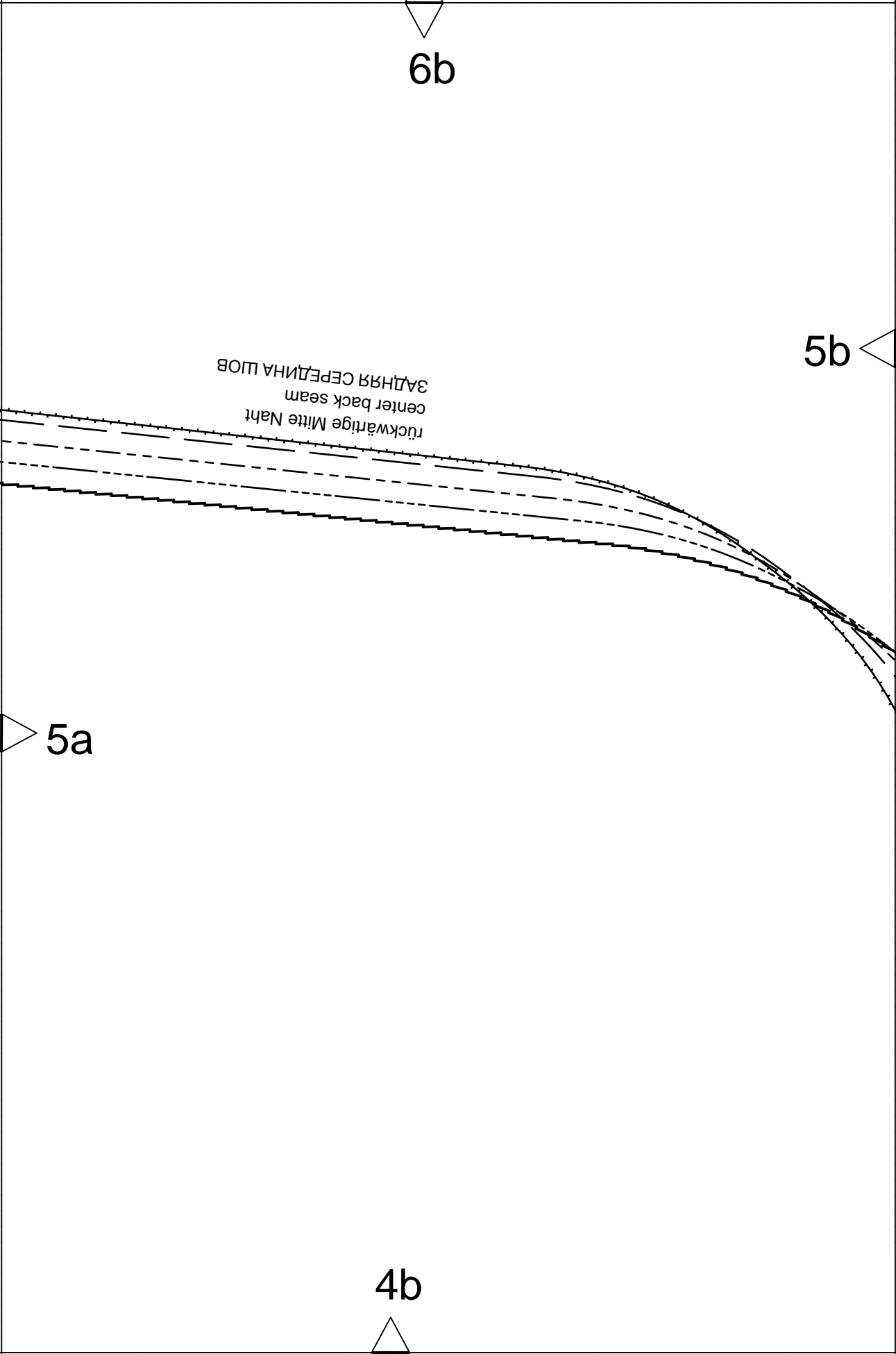
6b

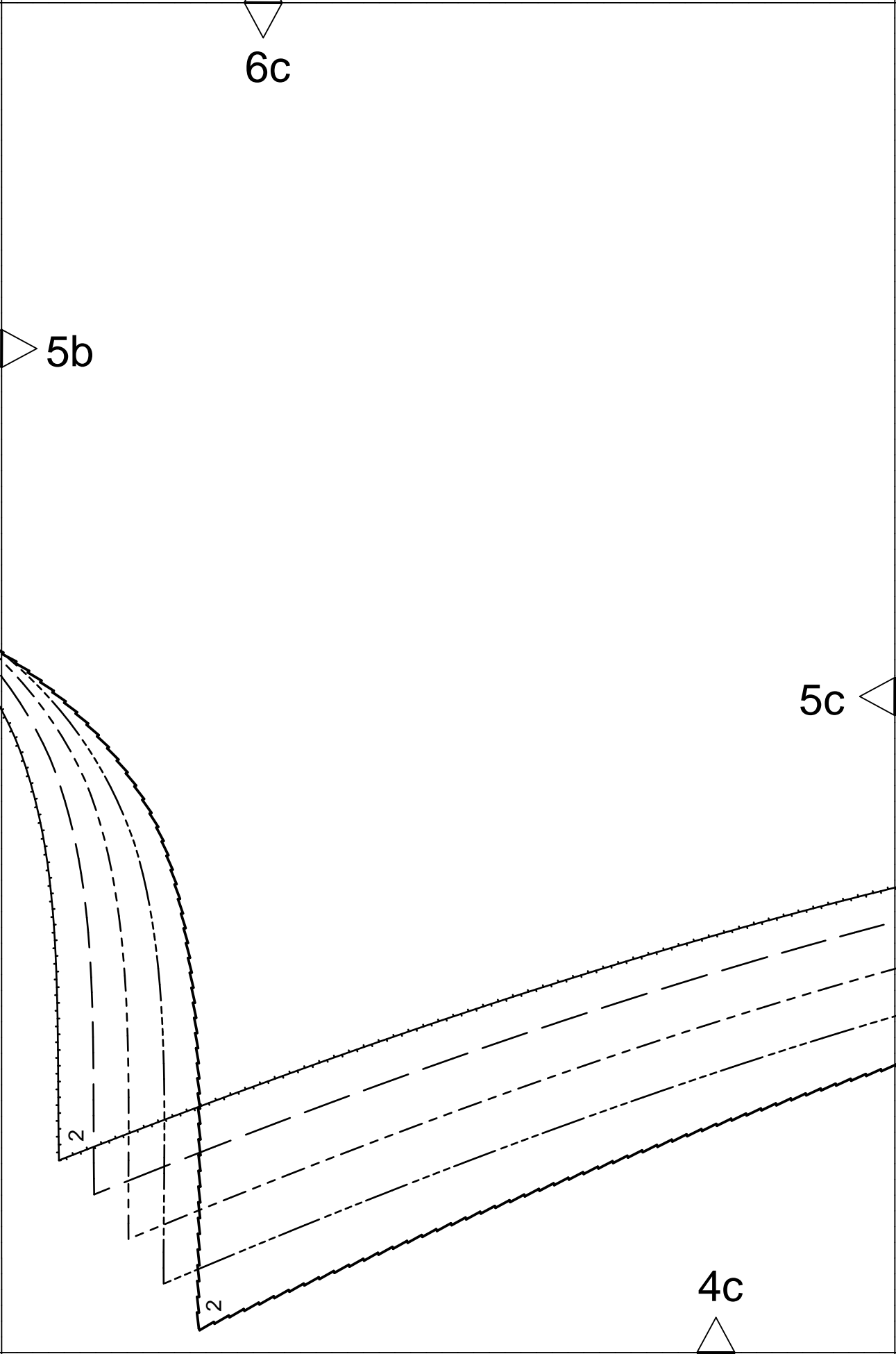
5b

ЗАДНЯЯ СЕРЕДИНА ШОБ
center back seam
rückwärtige Mitte Naht

5a

4b





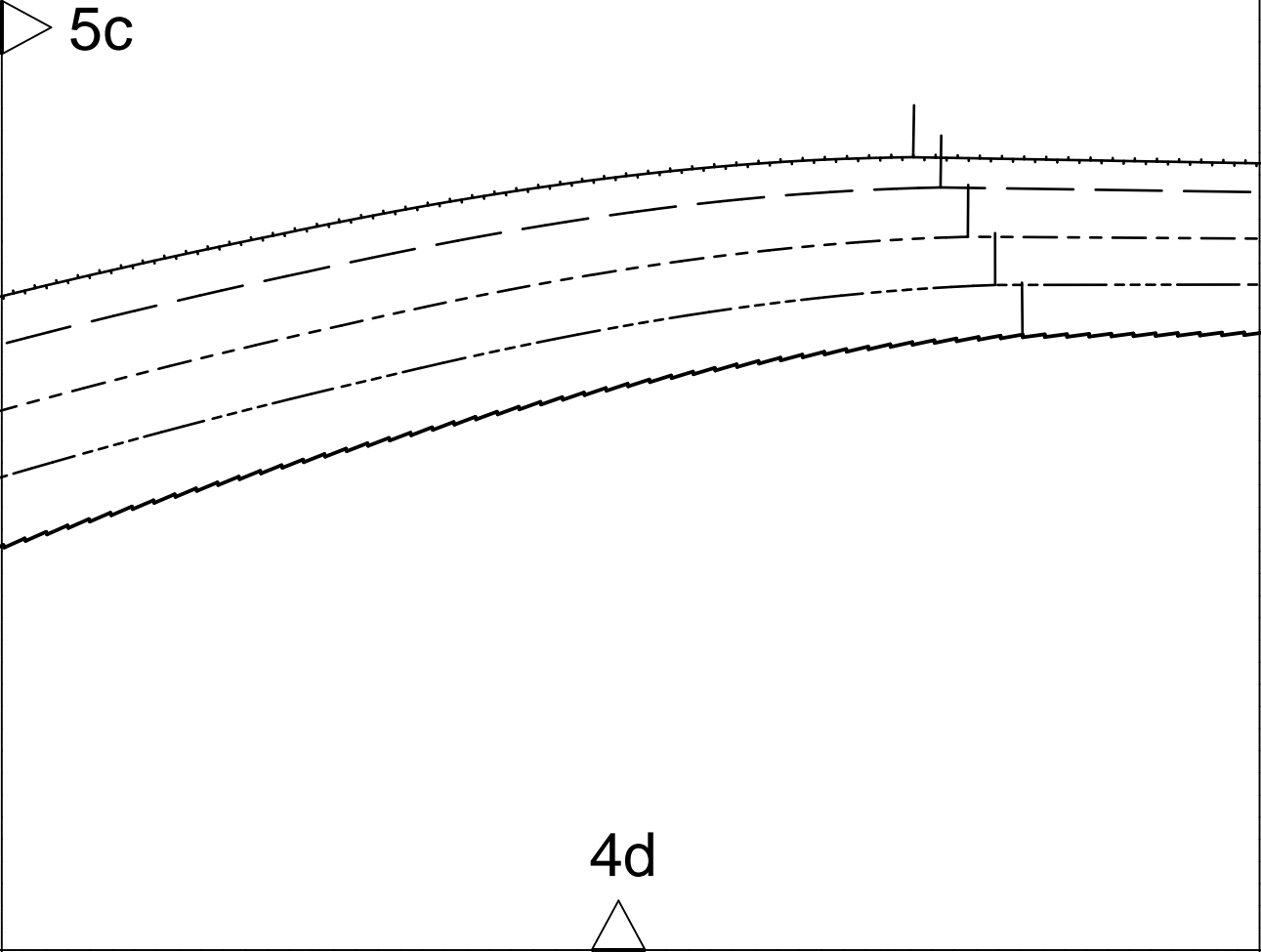
6d

22

5d

5c

4d

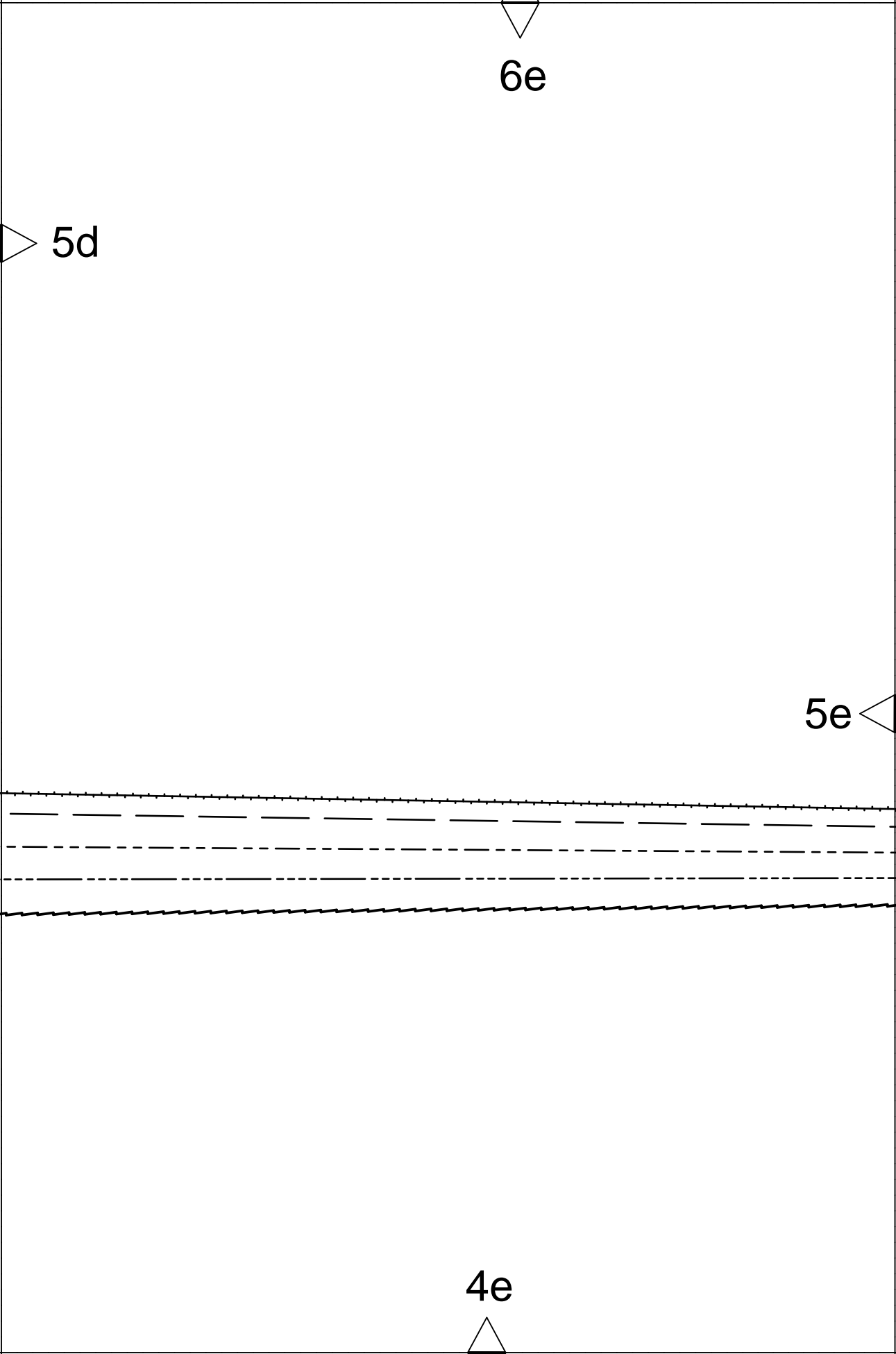


6e

5d

5e

4e

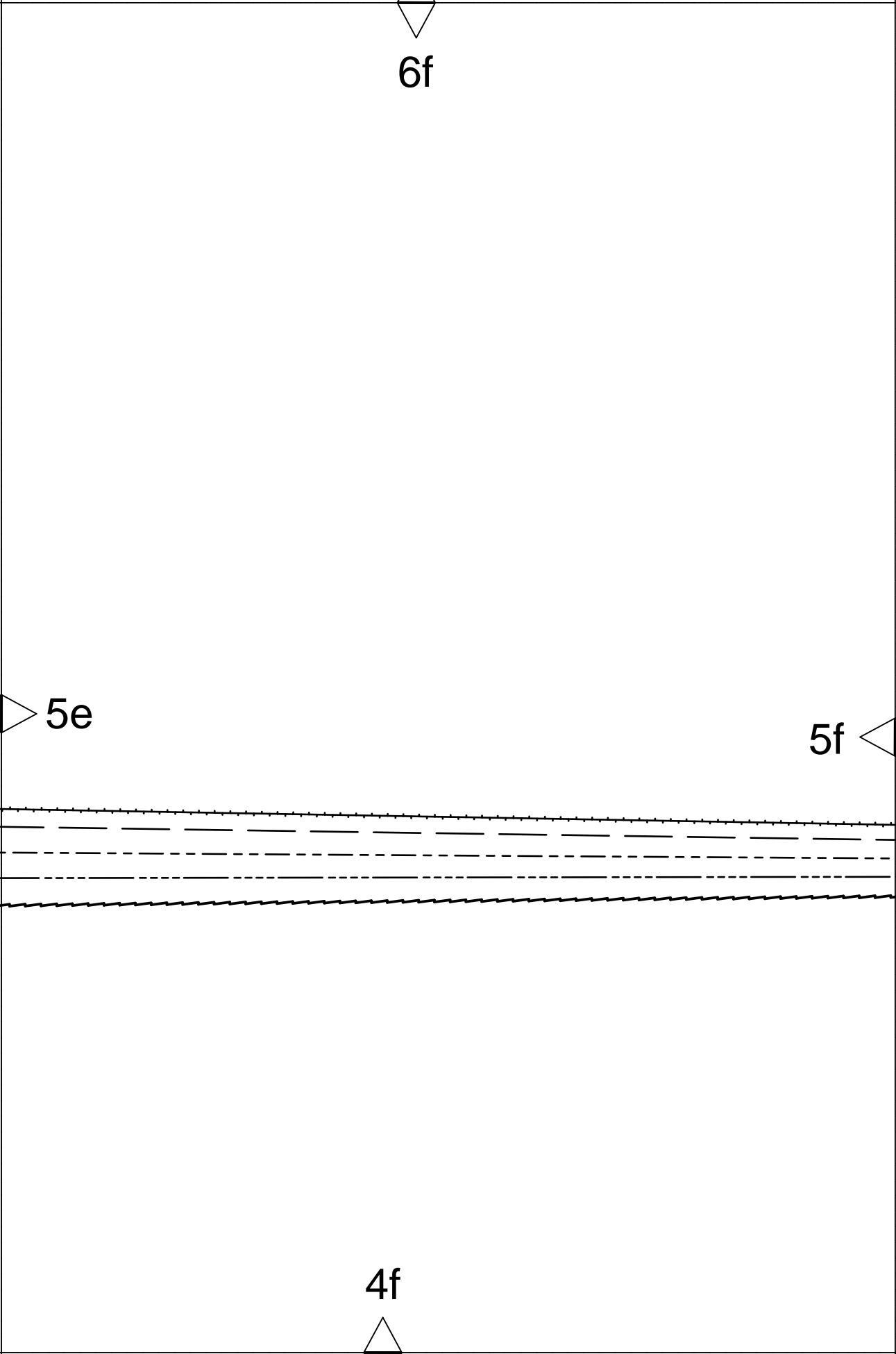


6f

4f

5e

5f

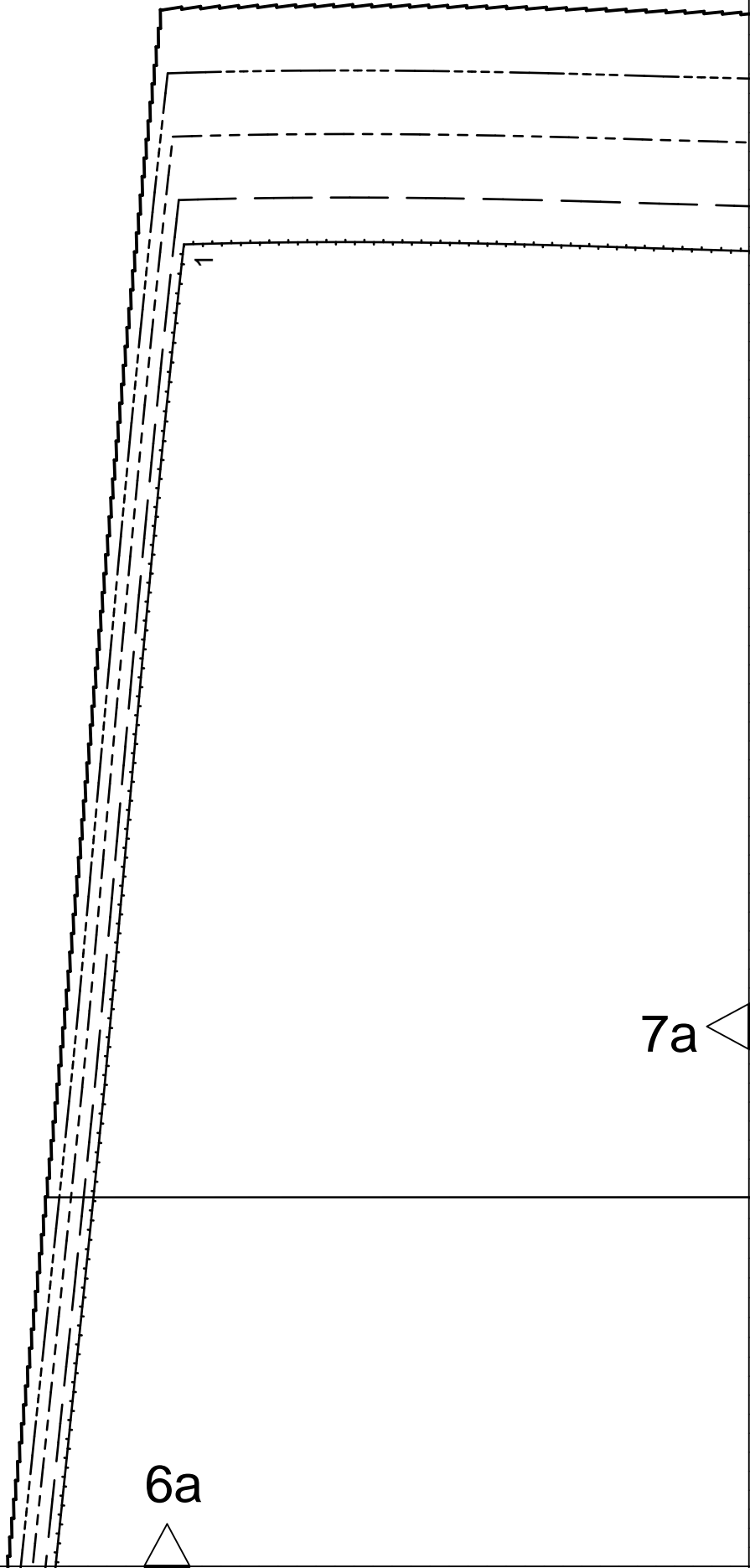


A diagram of a rectangular structure with a jagged right edge and a horizontal section in the middle. The structure is defined by a solid line. The right edge is jagged. The middle section consists of a solid line, a dashed line, and another solid line. Three labels with arrows point to specific features: '4g' at the bottom center, '5f' on the left side, and '6g' at the top center.

6g

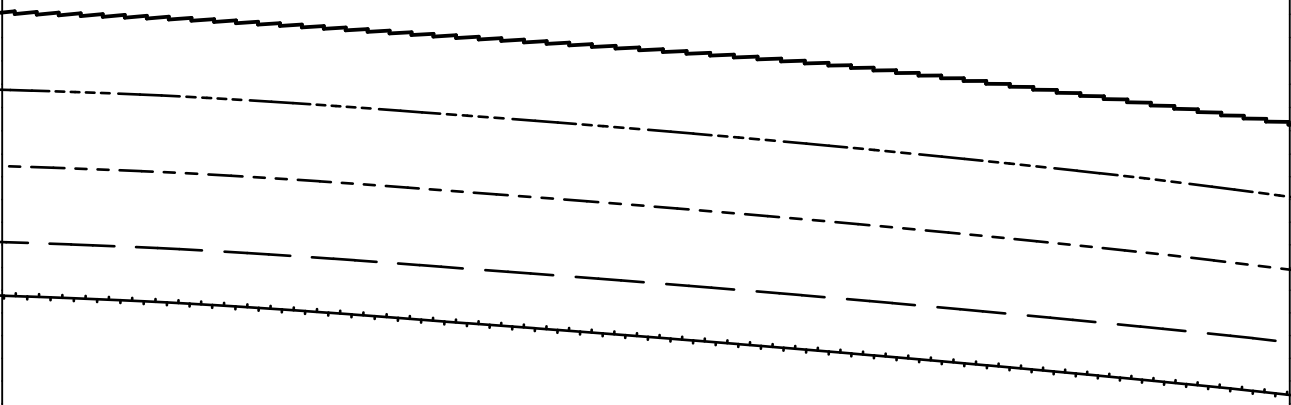
5f

4g



6a

7a



7a

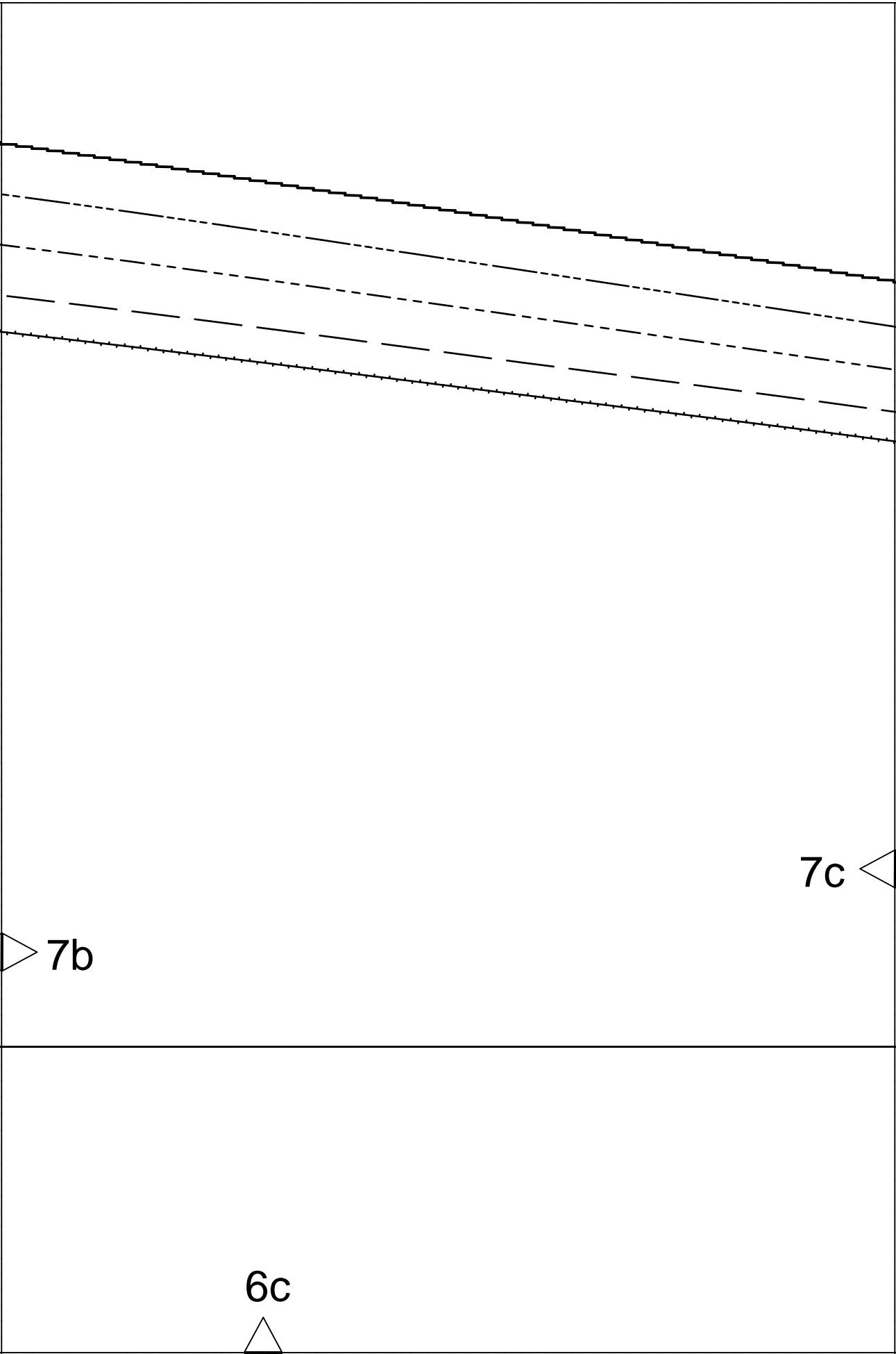
7b

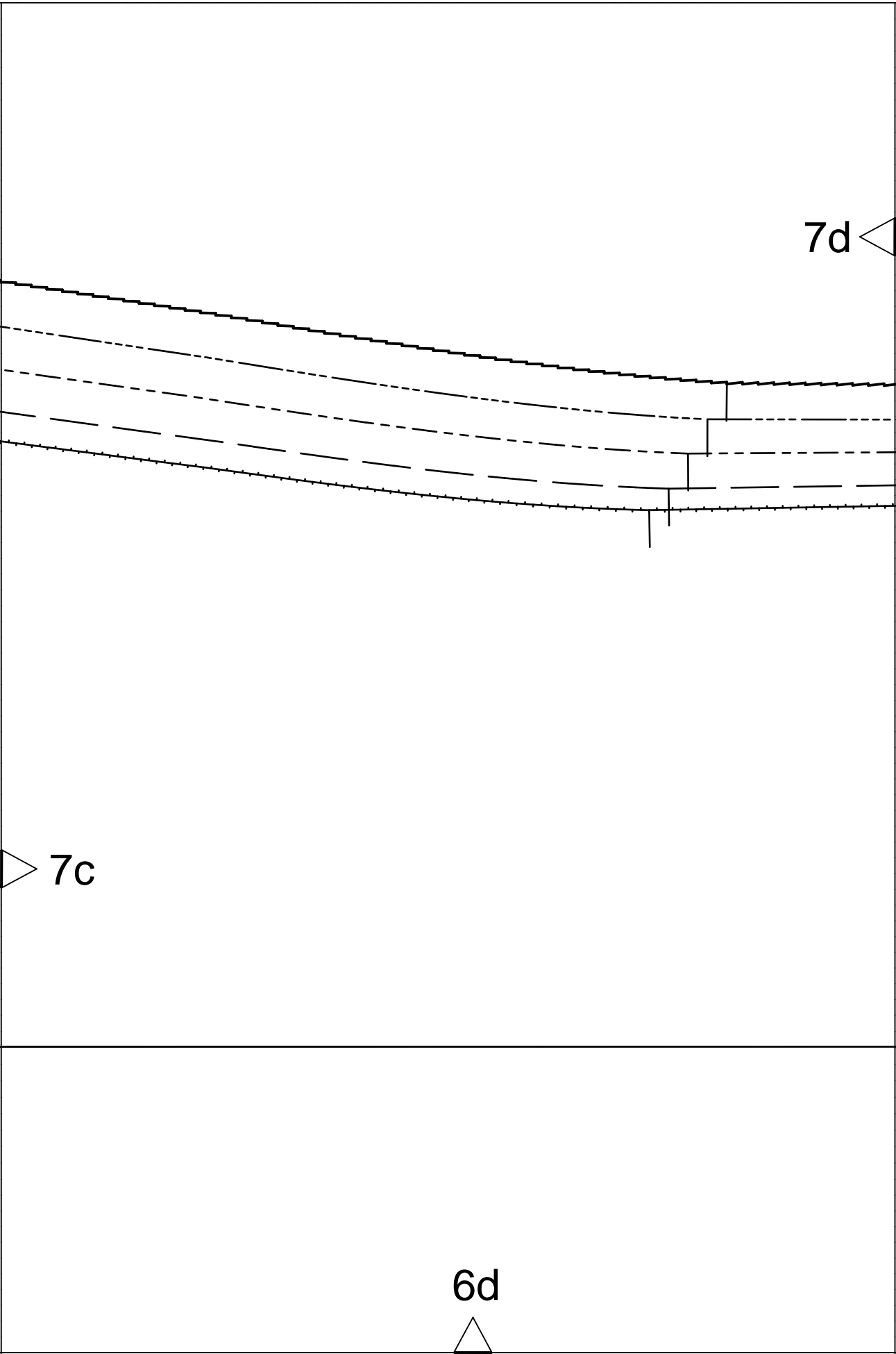
ДОЛБЕВАЯ НИТЬ
straight grain

Fadenlauf

6b





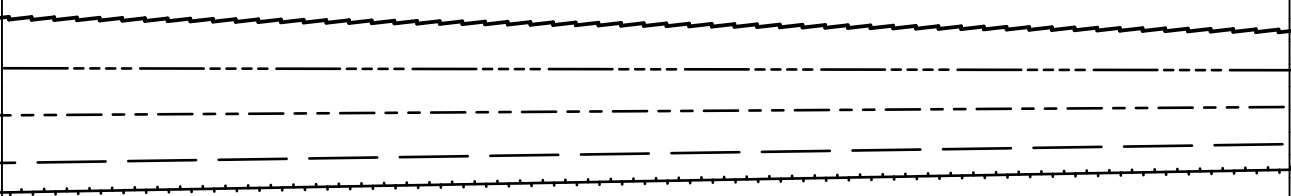


7d

7c

6d

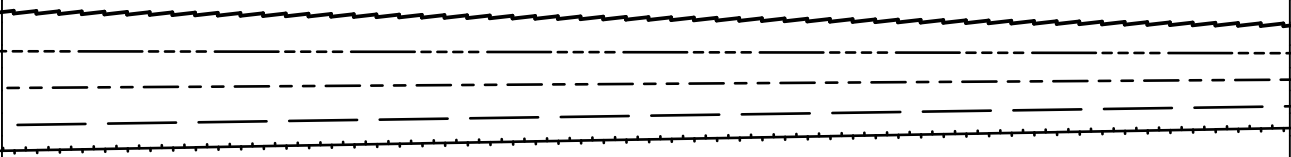
7d



7e

6e



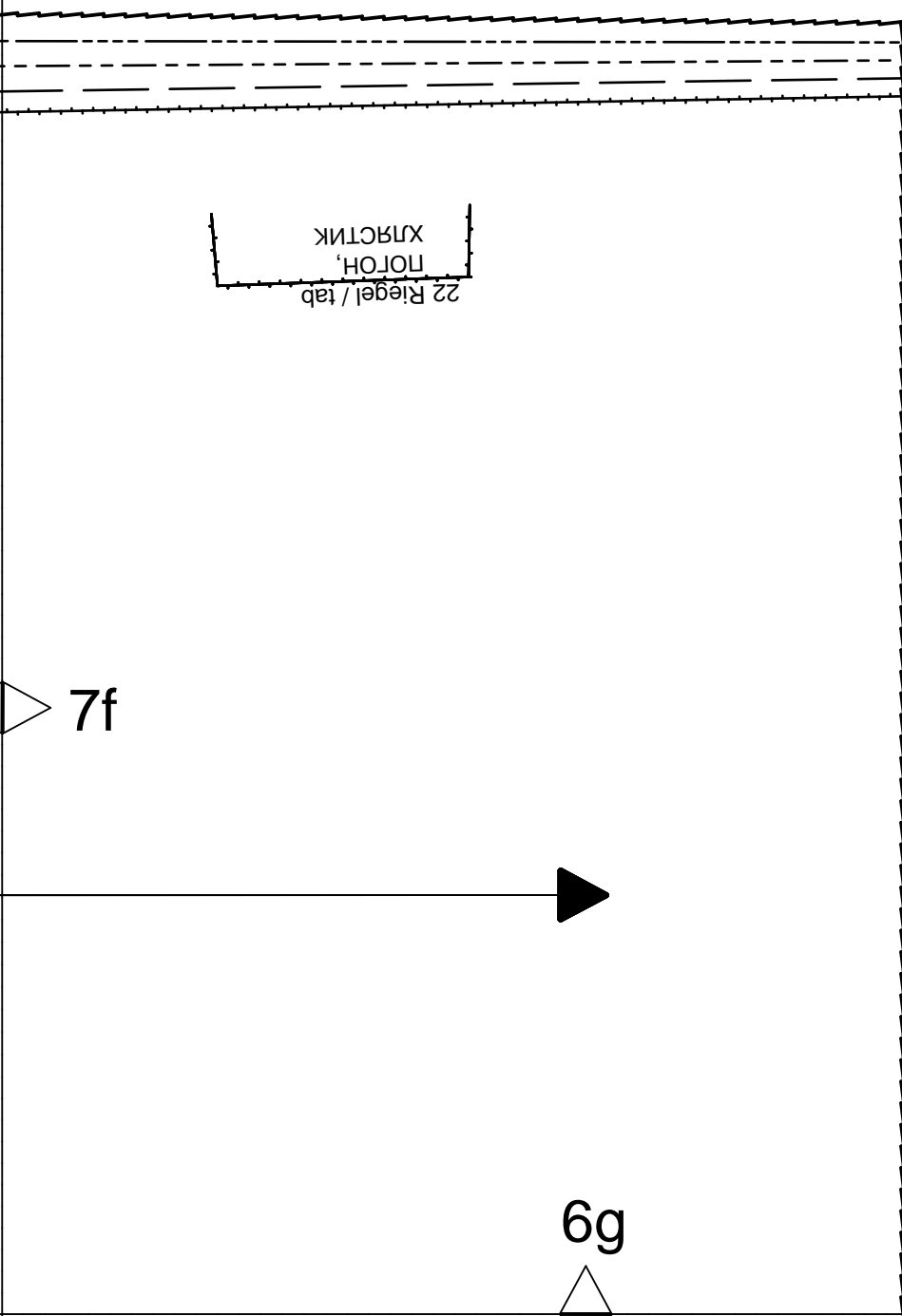


7e

7f

6f





22 Riegel / tab
HOJOLI
XJHACTIK

7f

6g