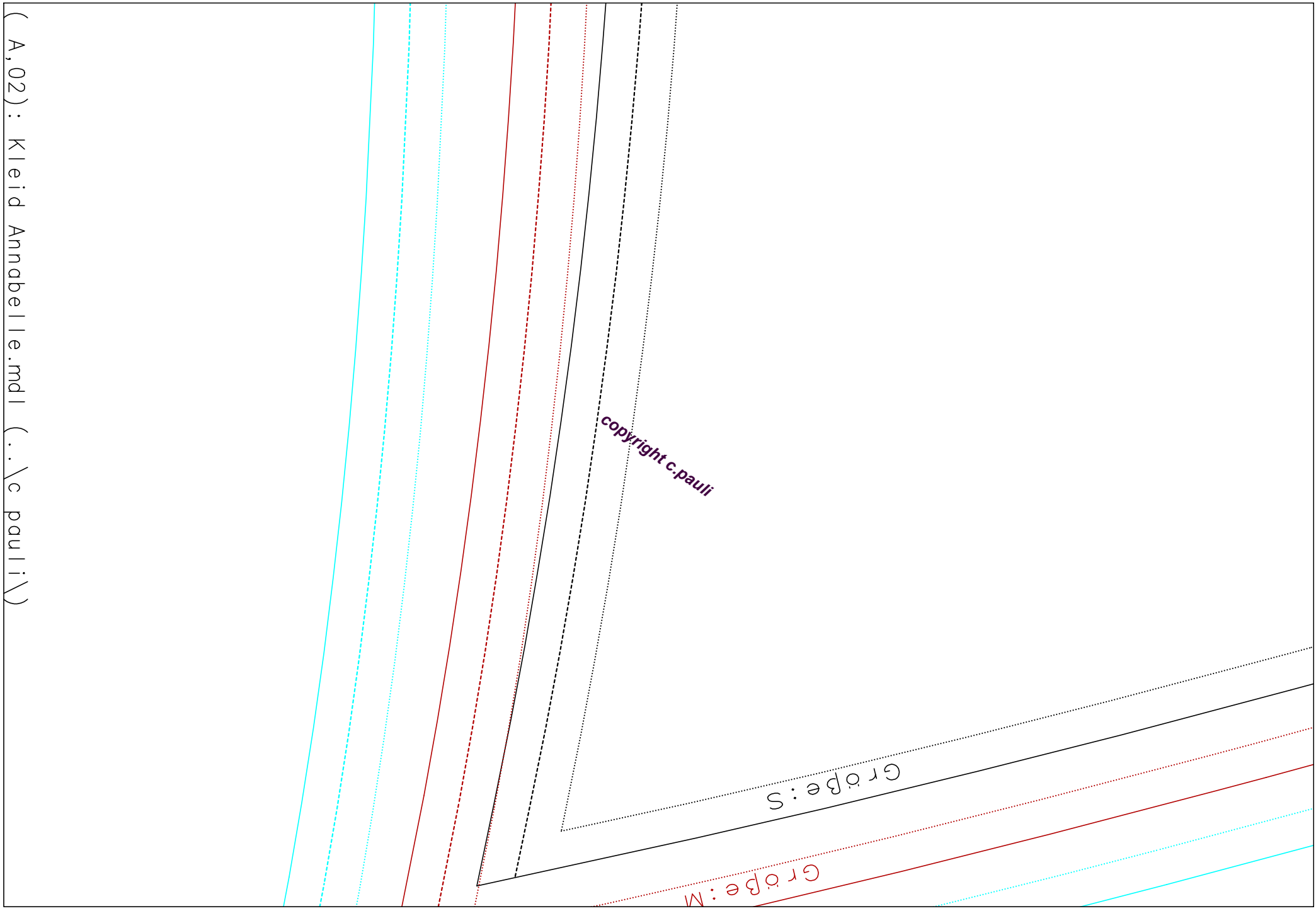


*copyright c.pauli*

(A,01): Kleid Annabelle.mdl (..\c pauli\)



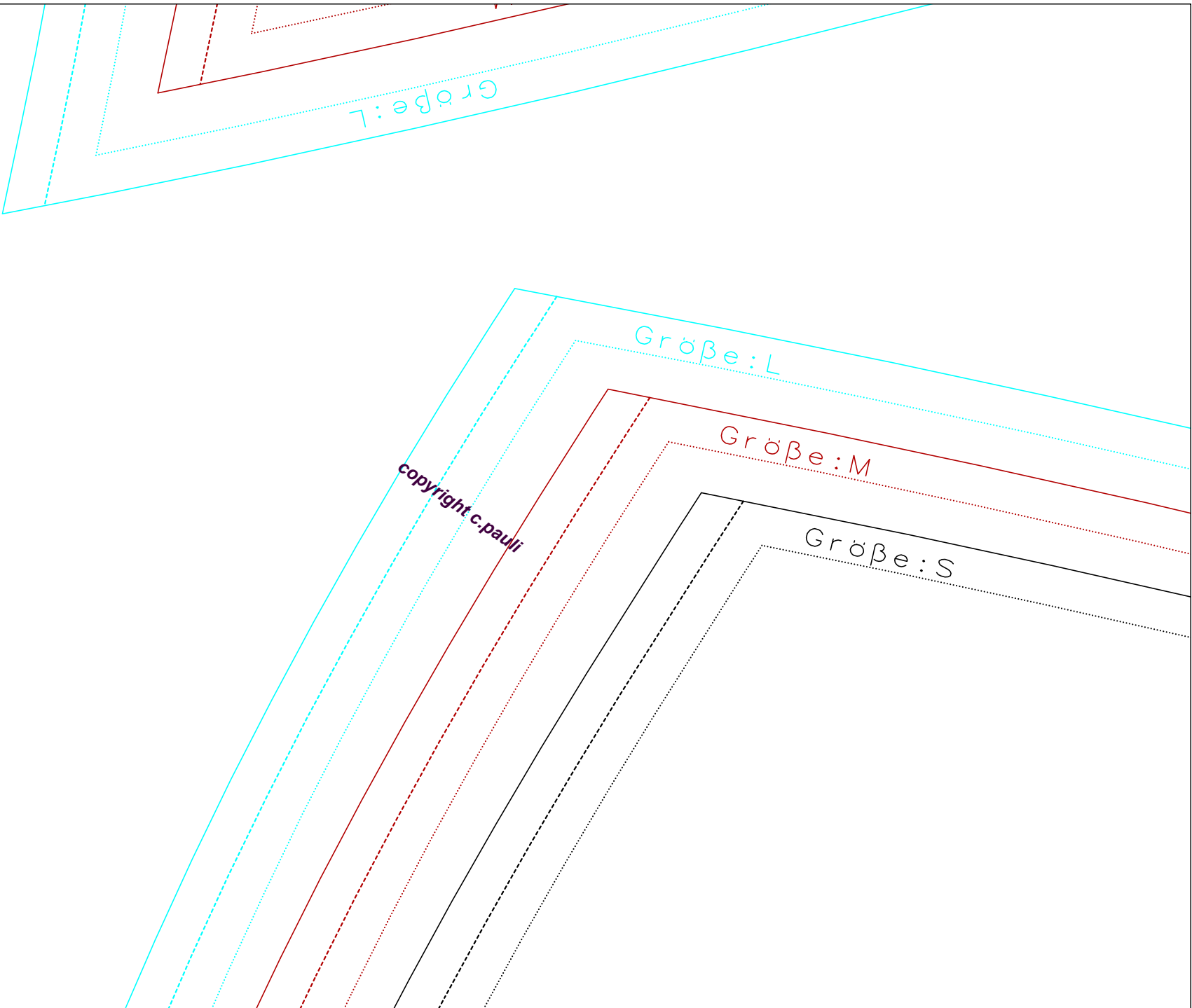
copyright c.pauli

Größe: S

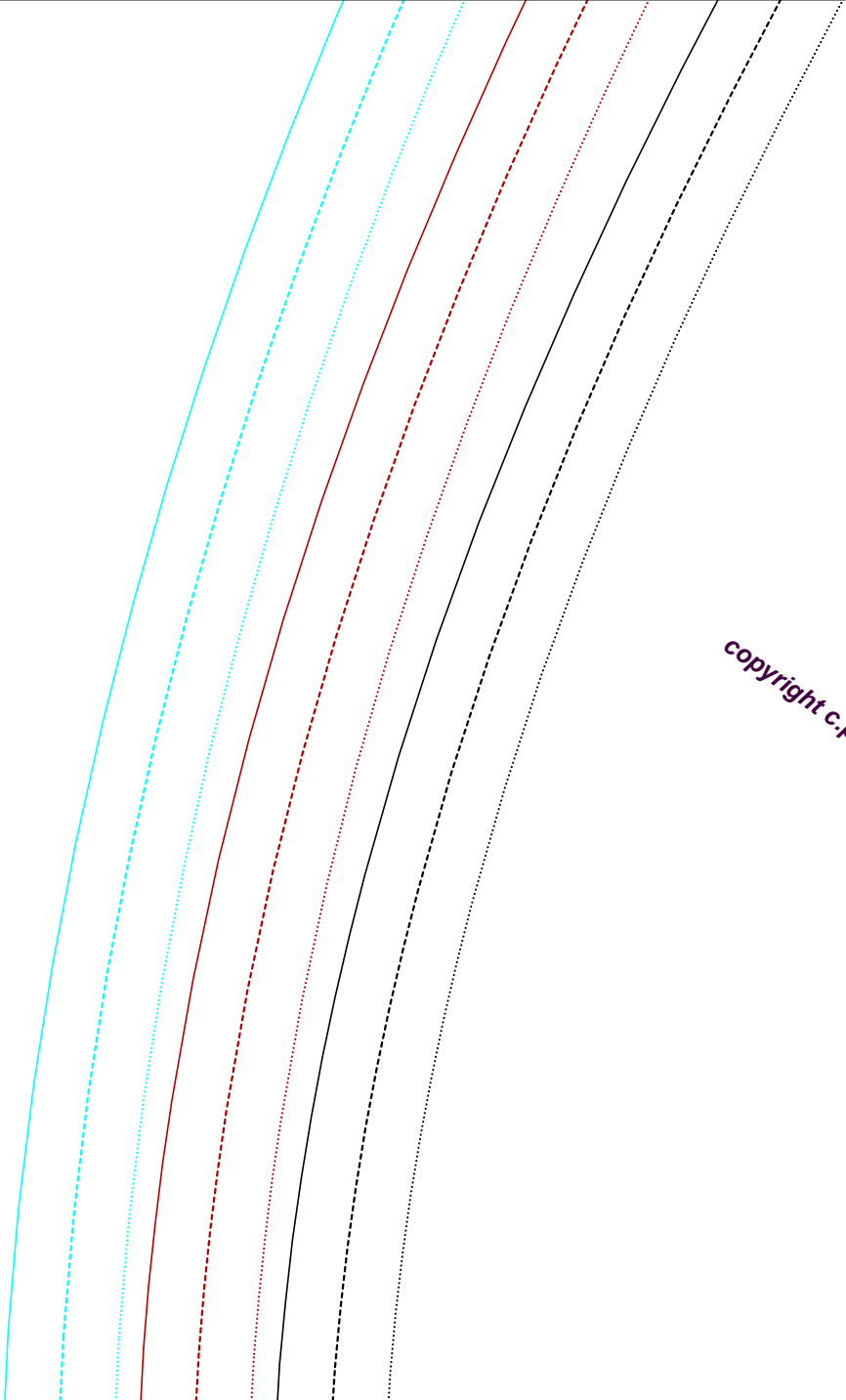
Größe: M

( A, 02 ): Kleid Annabelle.mdl ( ..\c pauli\ )

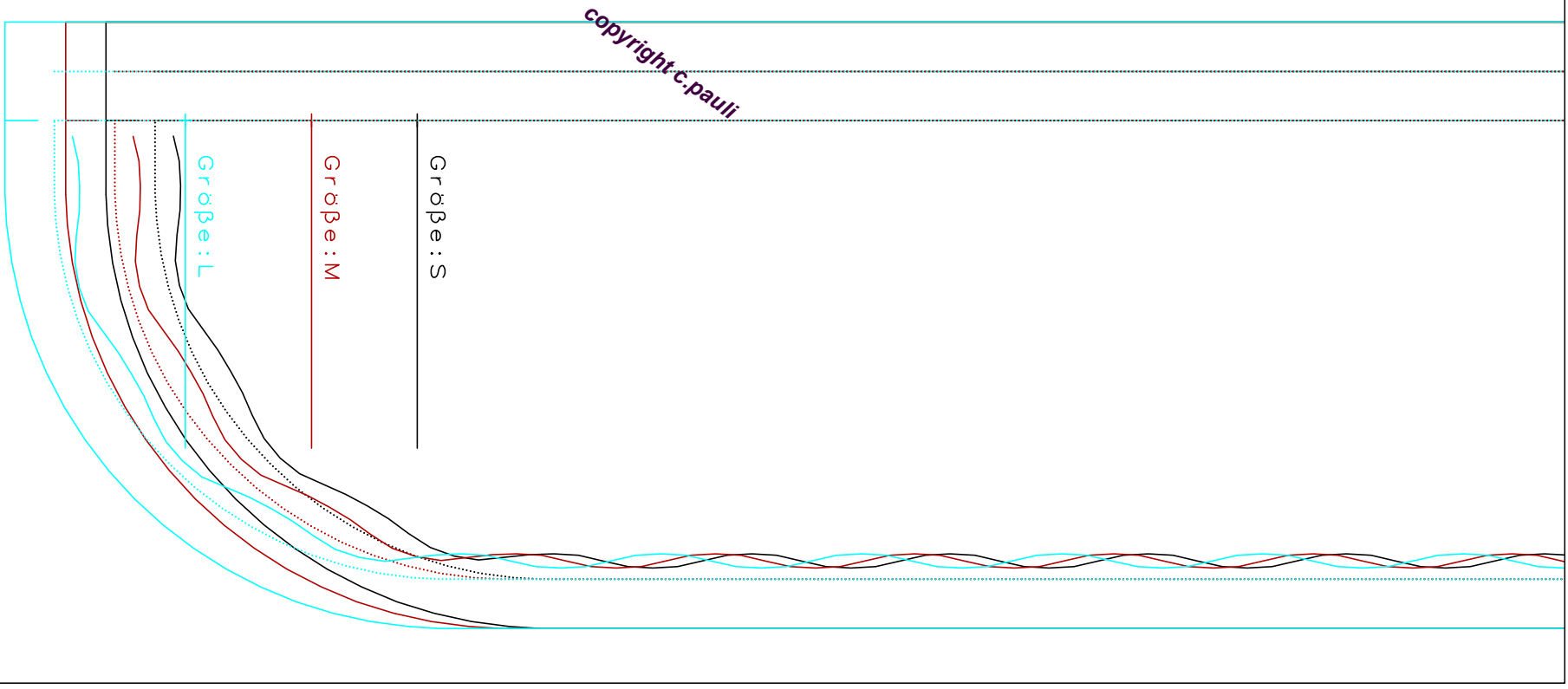
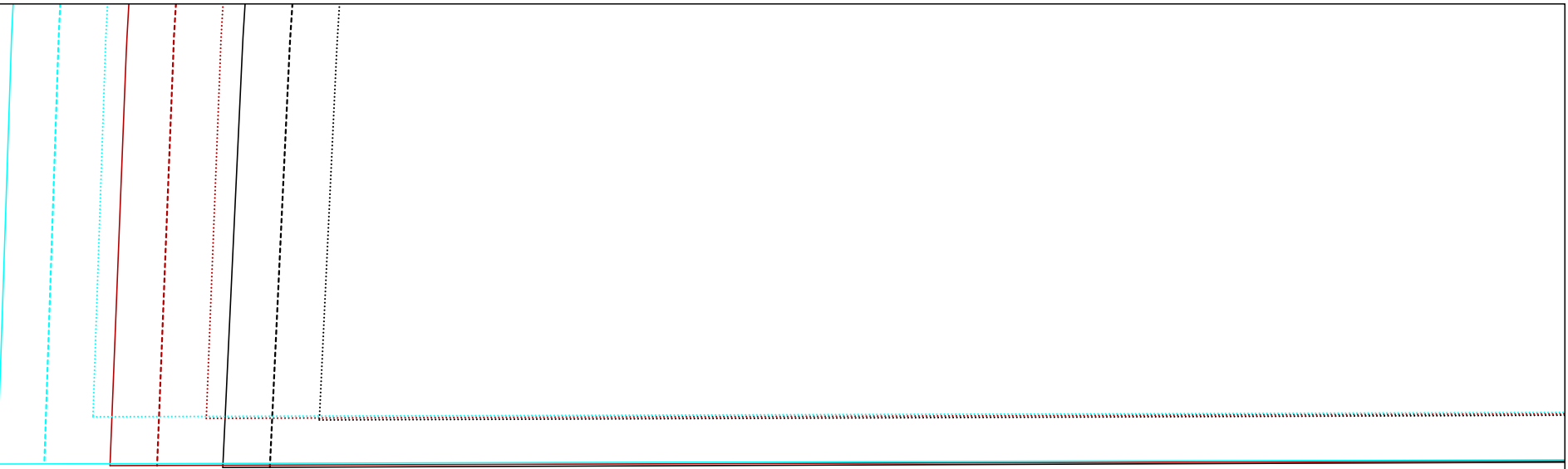
(A,03): Kleid Annabelle.mdl (..\c pauli\)



(A,04): Kleid Annabelle.mdl (..\c pauli\)



*copyright c.pauli*

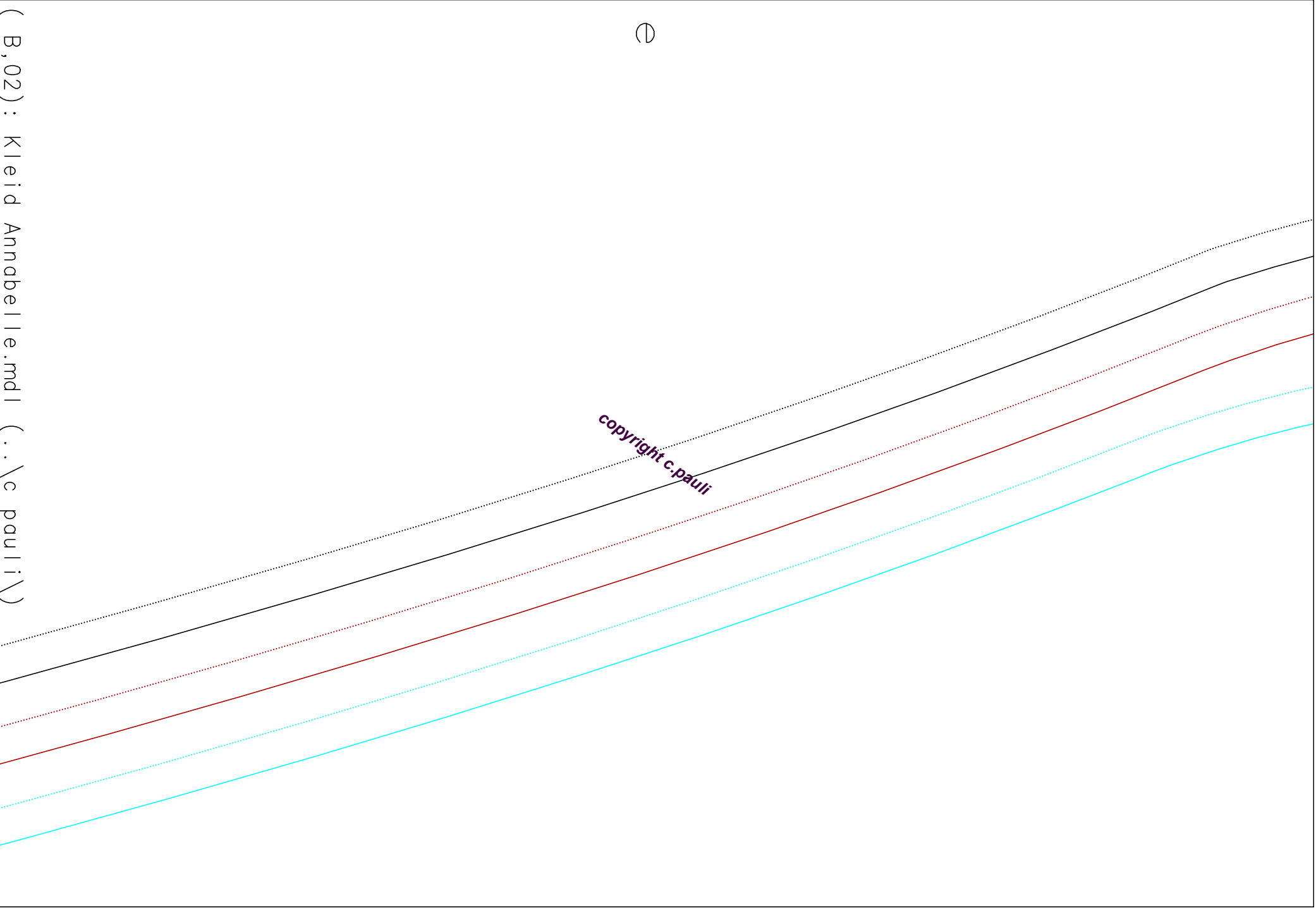


( A,05 ): Kleid Annabelle.mdl ( ..\c pauli\ )

(B,01): Vorderer Stoffbruch

Kleid Annabelle.mdl (..\c pauli\)

copyright.c.pauli  
1 x Kleid Vorderer



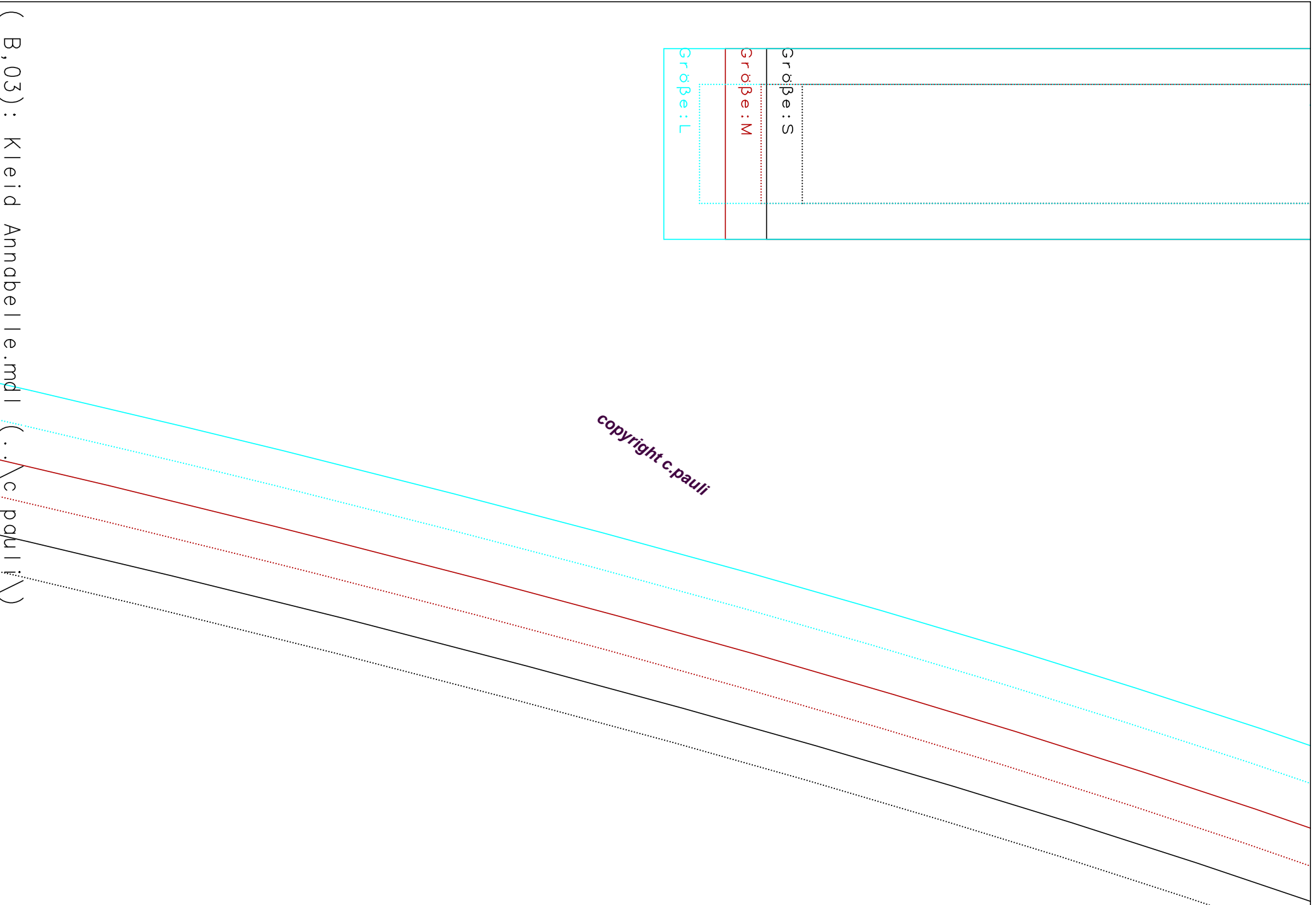
( B,02): Kleid Annabelle.mdl (..\c pauli\)

⊖

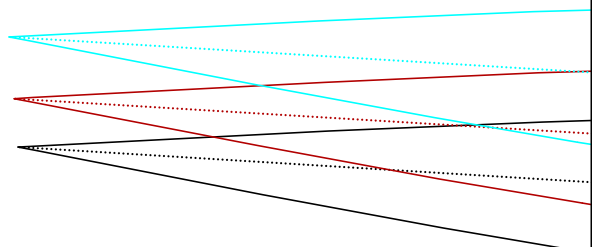
|          |  |
|----------|--|
| Größe: S |  |
| Größe: M |  |
| Größe: L |  |

*copyright c.pauli*

( B,03): Kleid Annabelle.mdl (.:c.pauli:)







*copyright c.pauli*

Kleid Annabelle  
1 Paar Ruckenteil

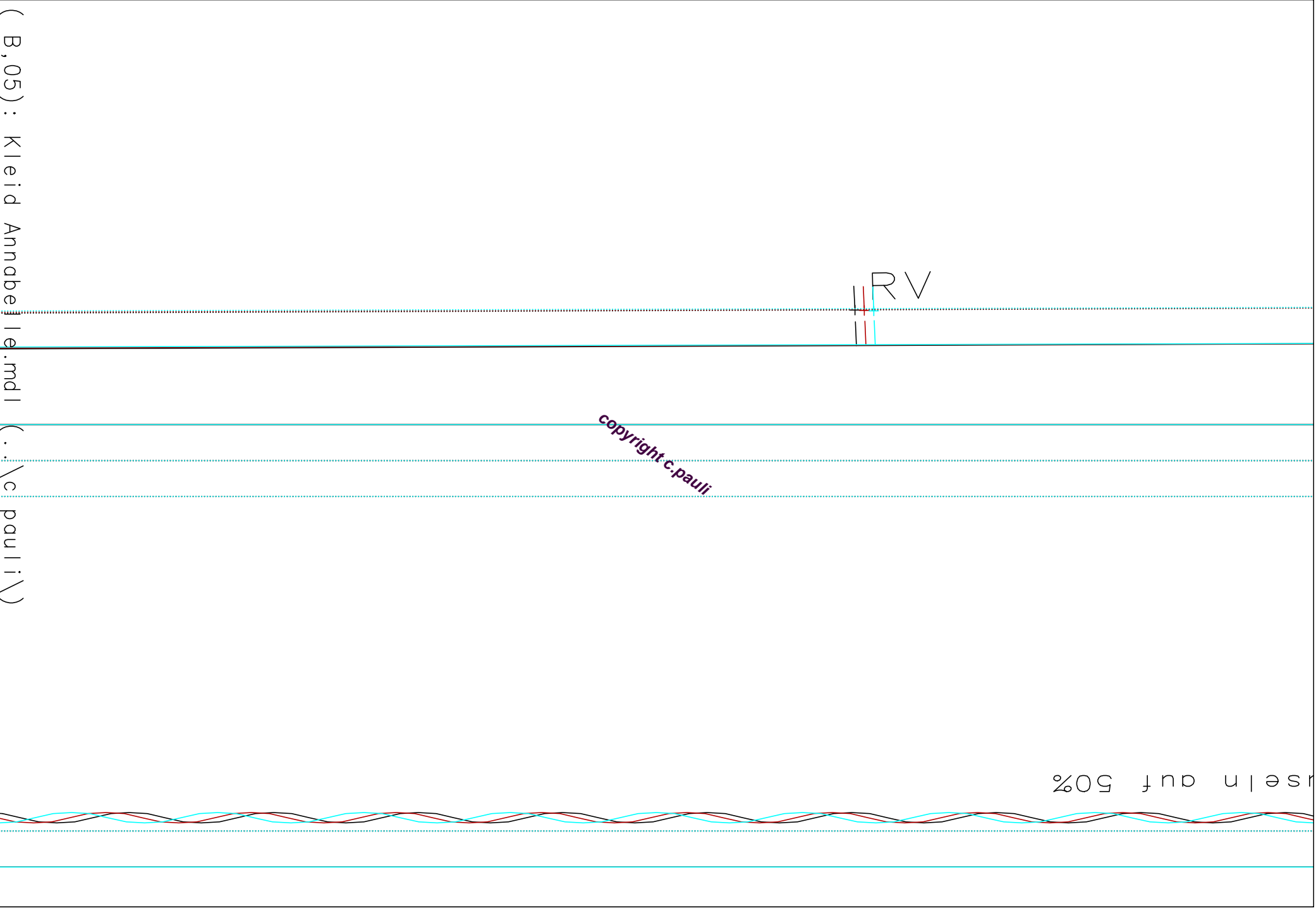
(B,04): Kleid Annabelle.mdl (..\c pauli\)

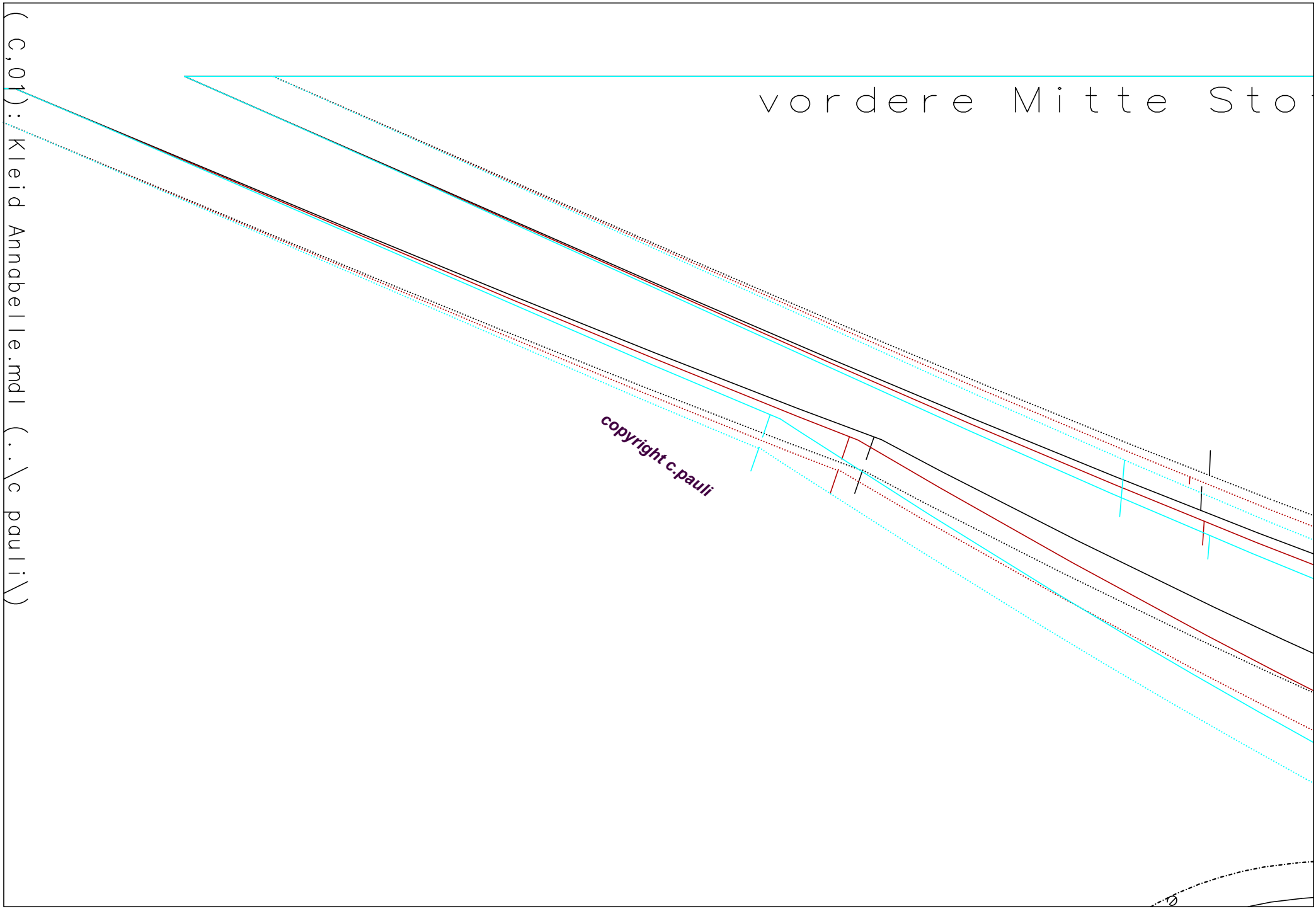
( B,05): Kleid Annabelle.mdl  
(.: \c pauli\)

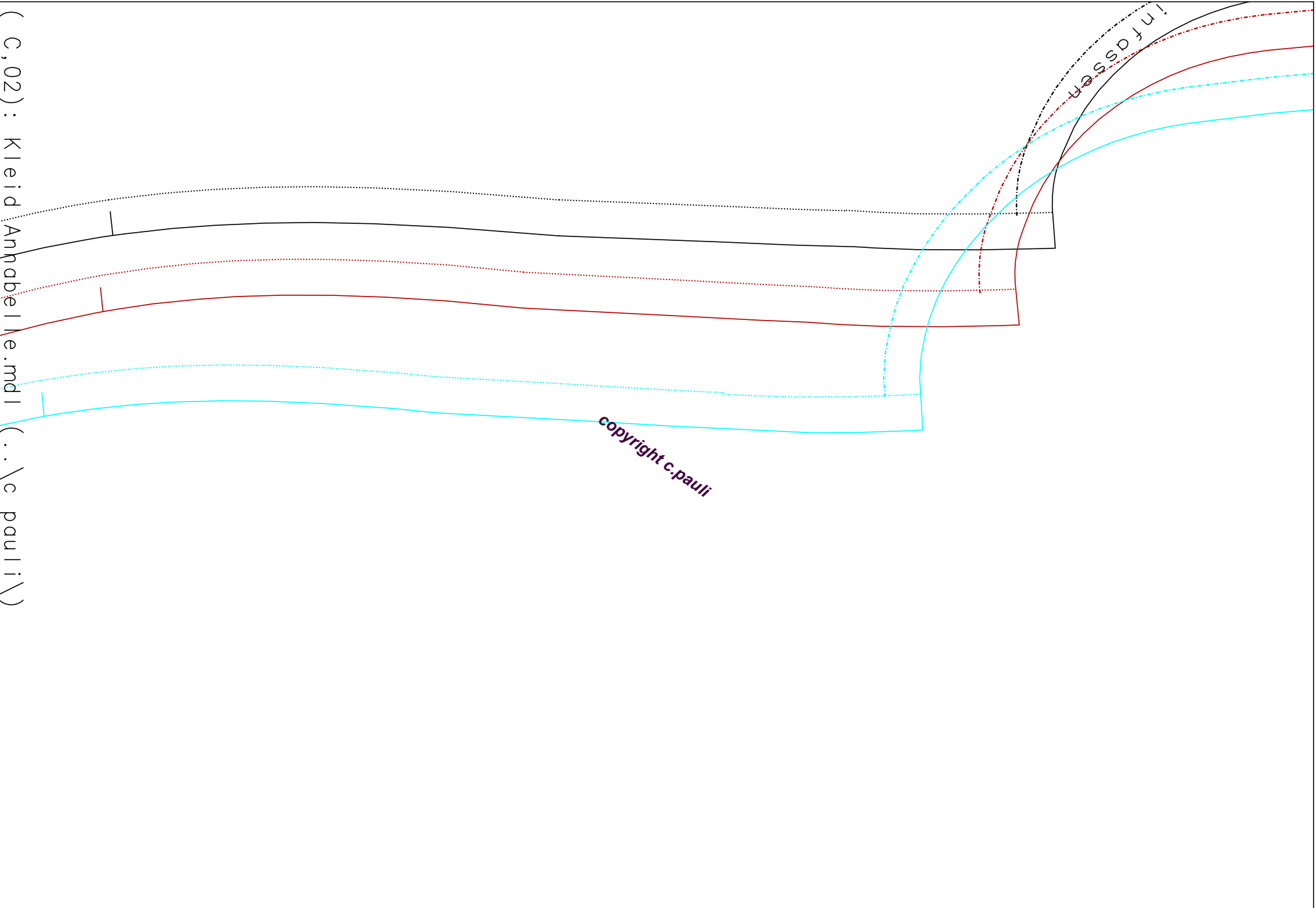
RV

copyright c.pauli

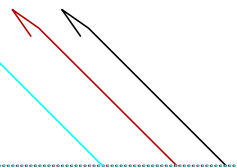
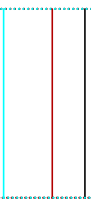
rseln auf 50%





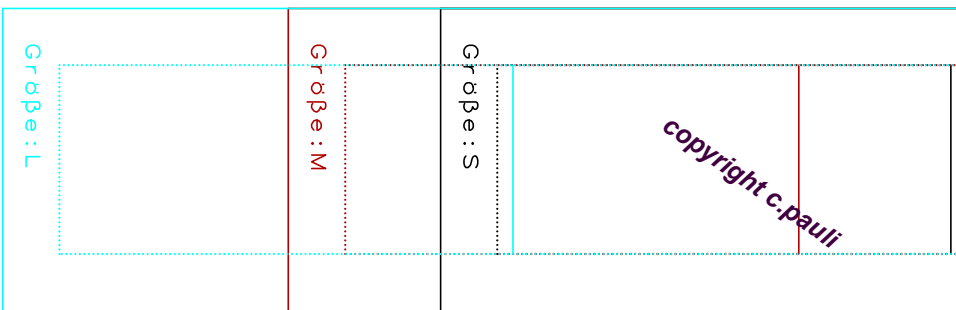


Kleid Annabelle  
1x Einfassung Halsloch

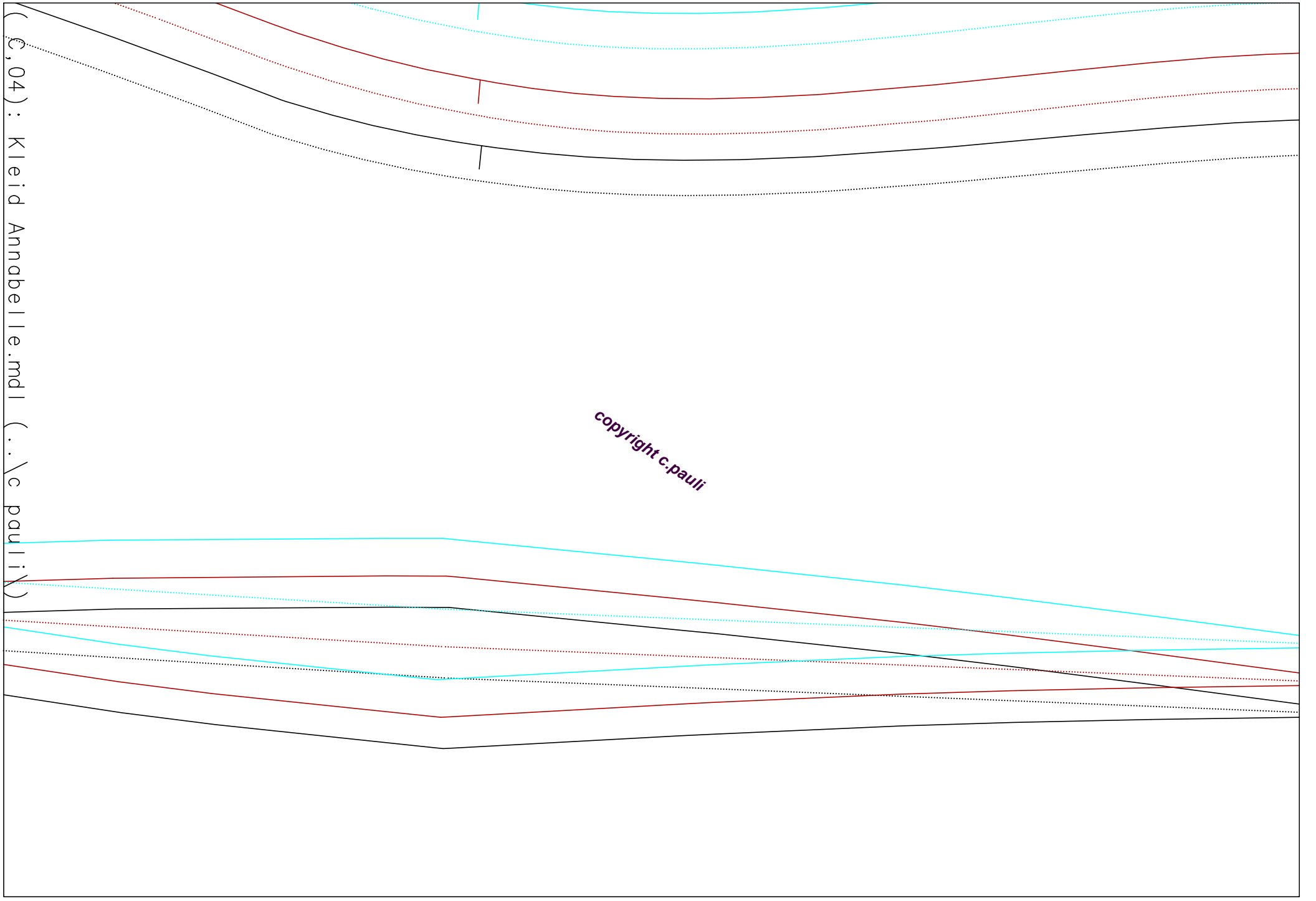


m | o | c | h

copyright c.pauli

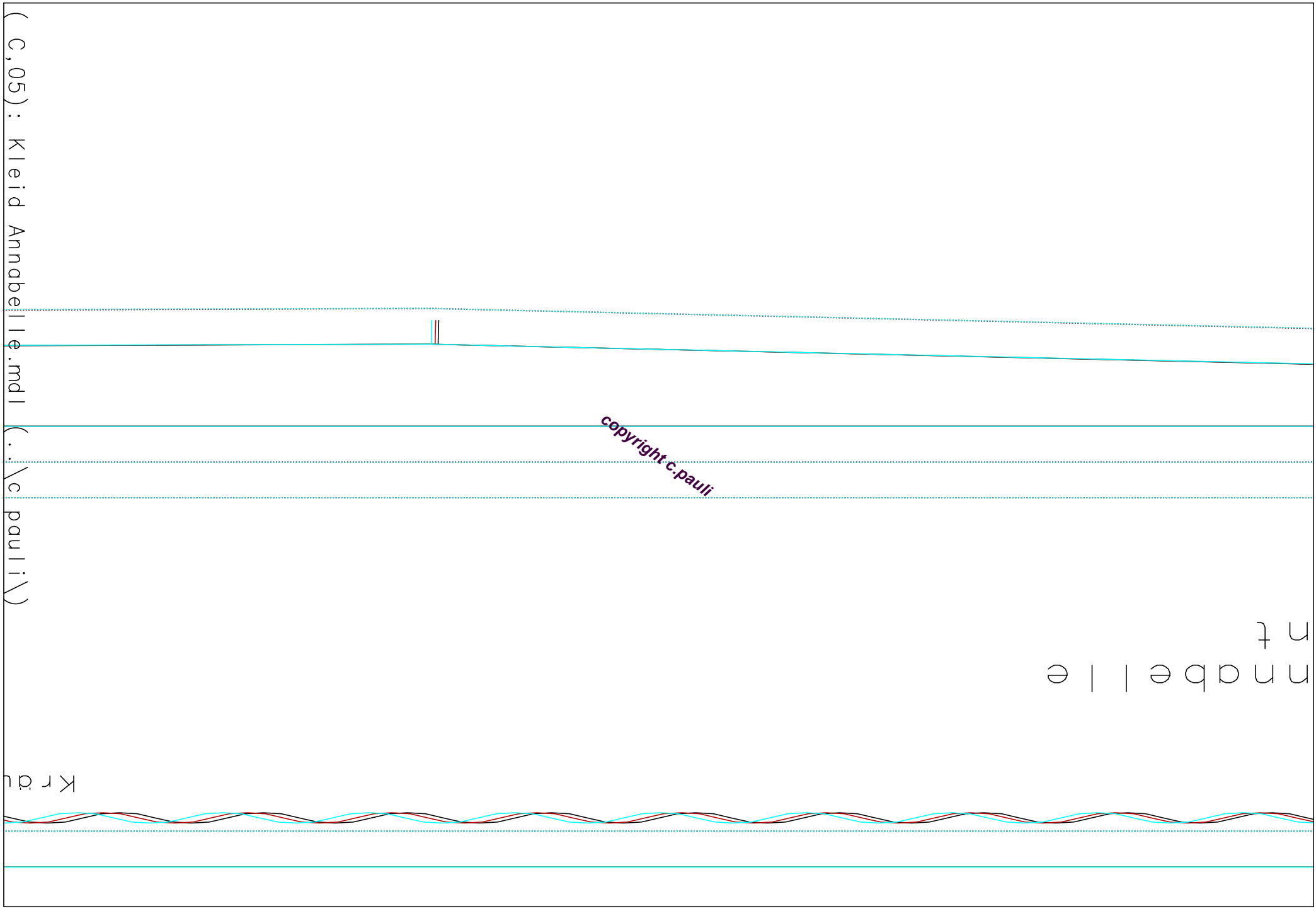


(0,03) Kleid Annabelle.mdl (..\c pauli\)



(C,04): Kleid Annabelle.mdl (..\c\pauli\X)

copyright c.pauli



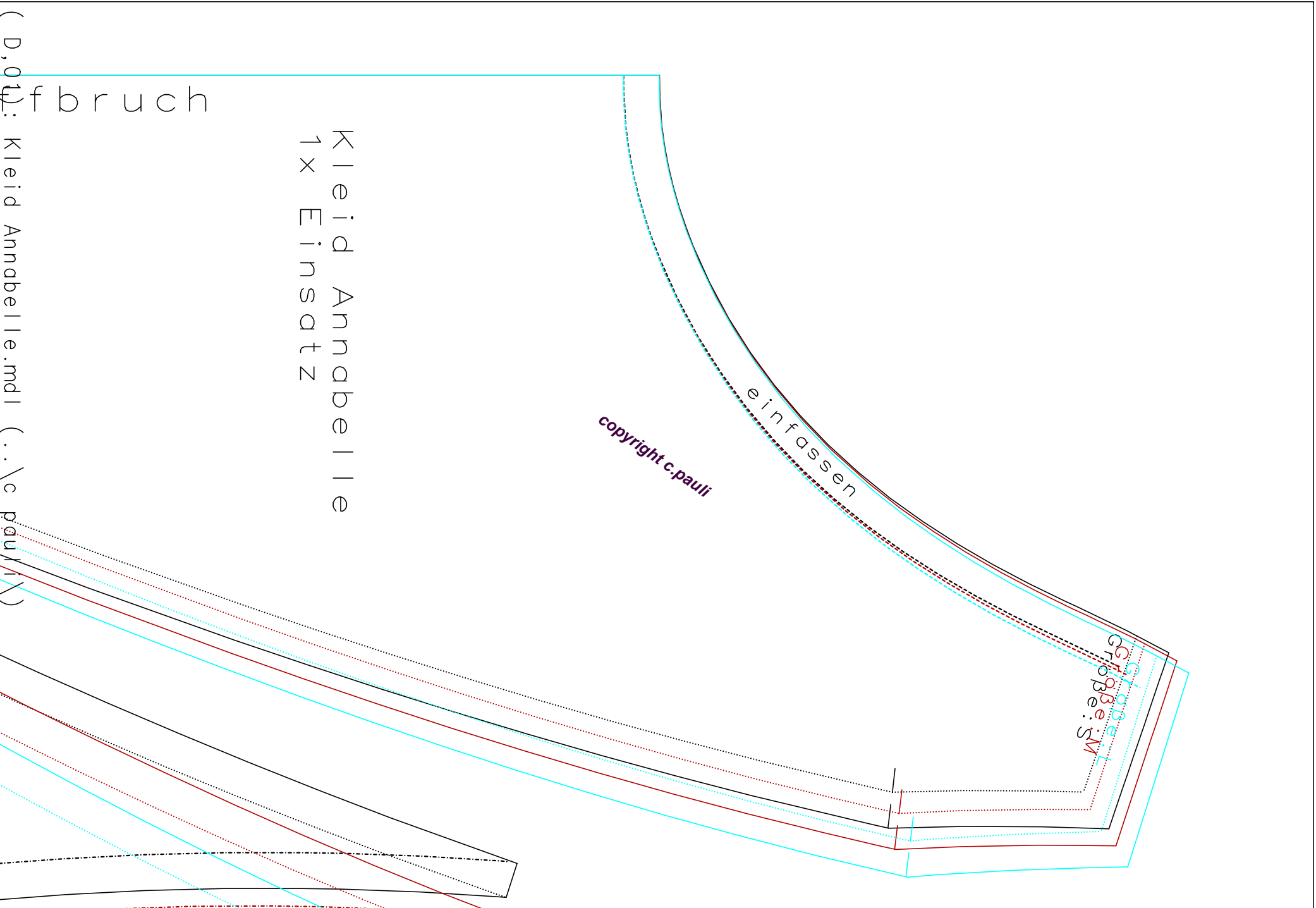
( C, 05 ): Kleid Annabelle.mdl

(.: \c pauli\)

Kleid

copyright c.pauli

Annabelle  
nt



(D,01): fbruch

Kleid Annabelle  
1x Einsatz

copyright c.pauli

ein fassen

Größe: M  
Größe: S

(..\c pauli\X)



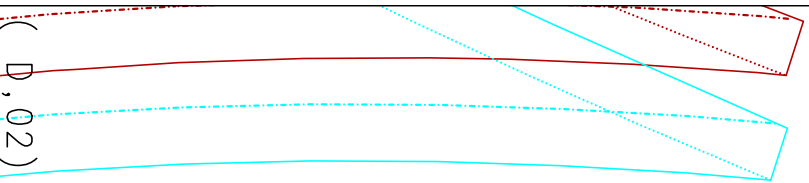
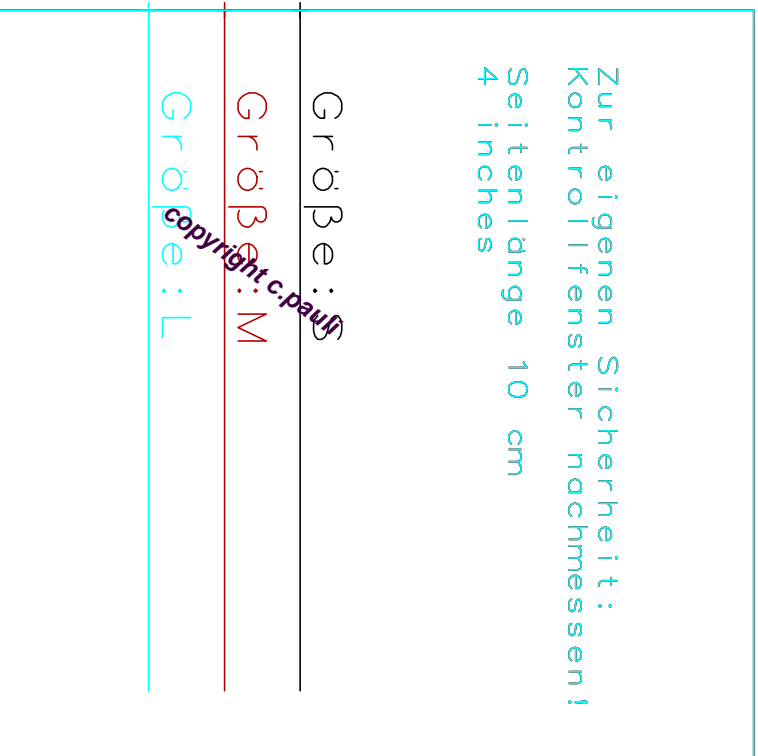
Zur eigenen Sicherheit:  
Kontrollfenster nachmessen!  
Seitenlänge 10 cm  
4 inches

Größe: ~~S~~

Größe: M

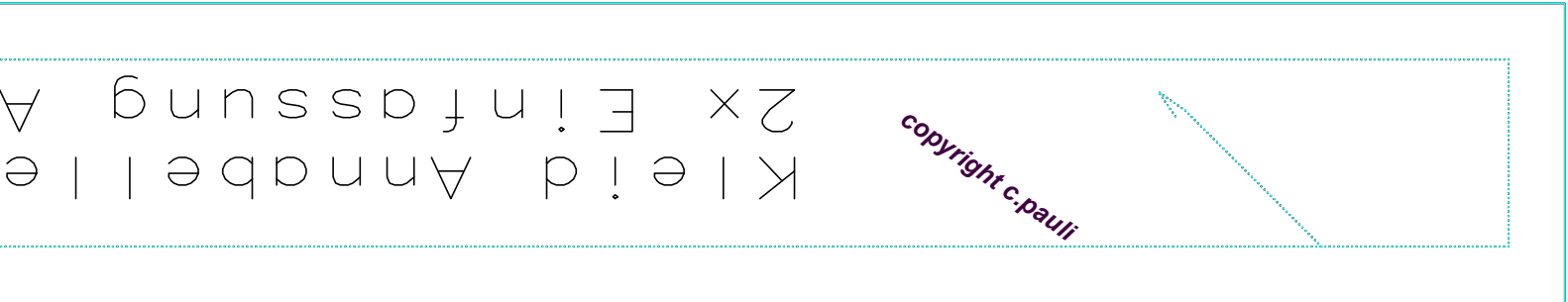
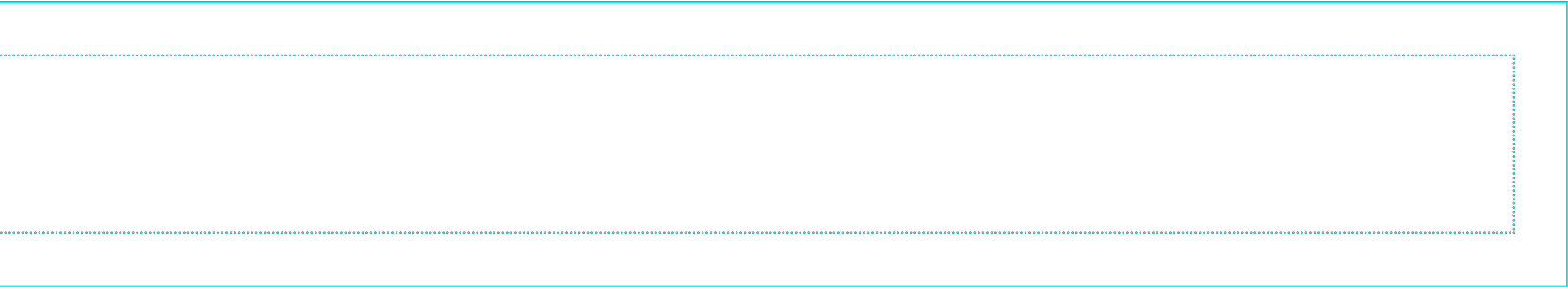
Größe: L

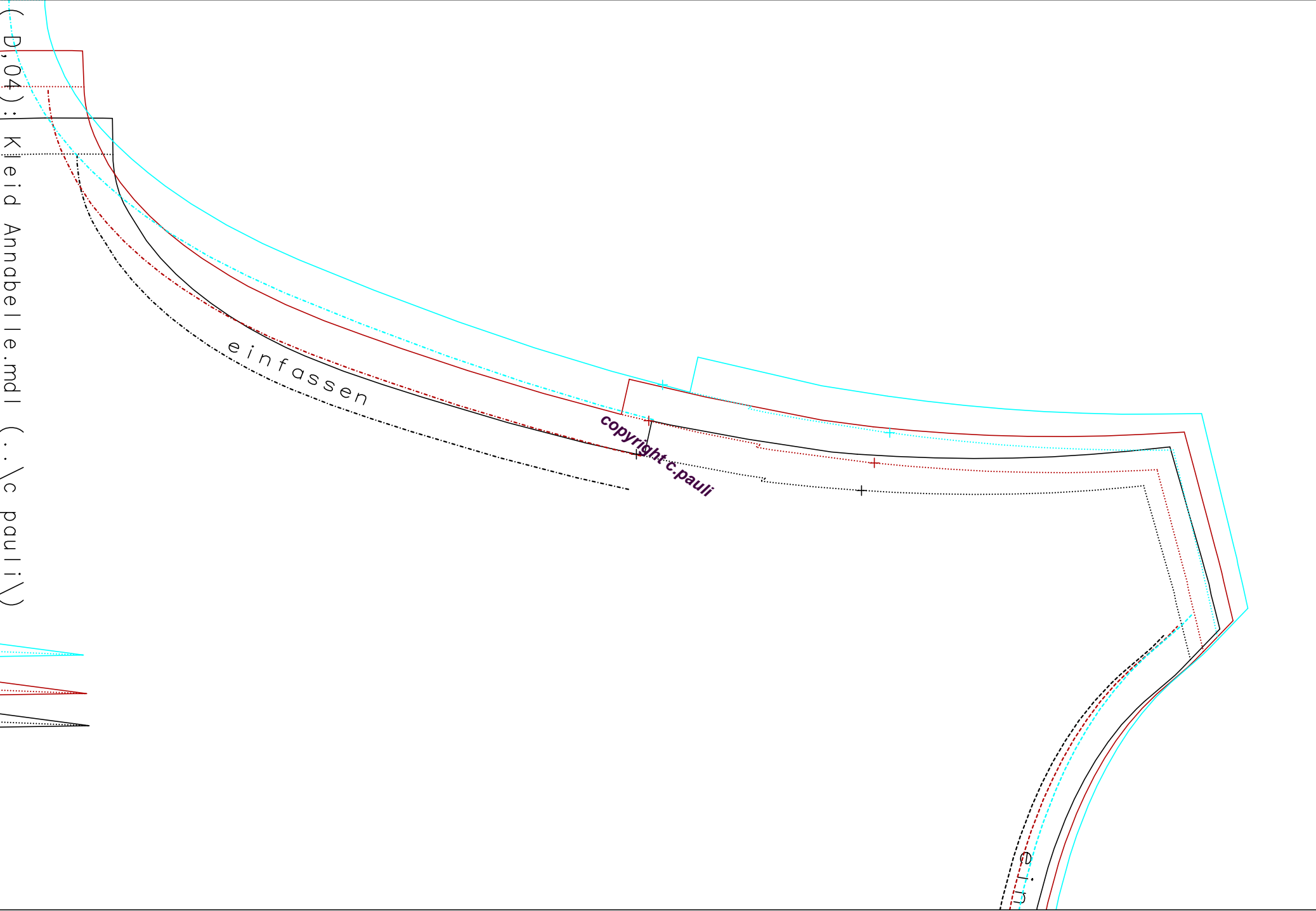
copyright.c.pauli

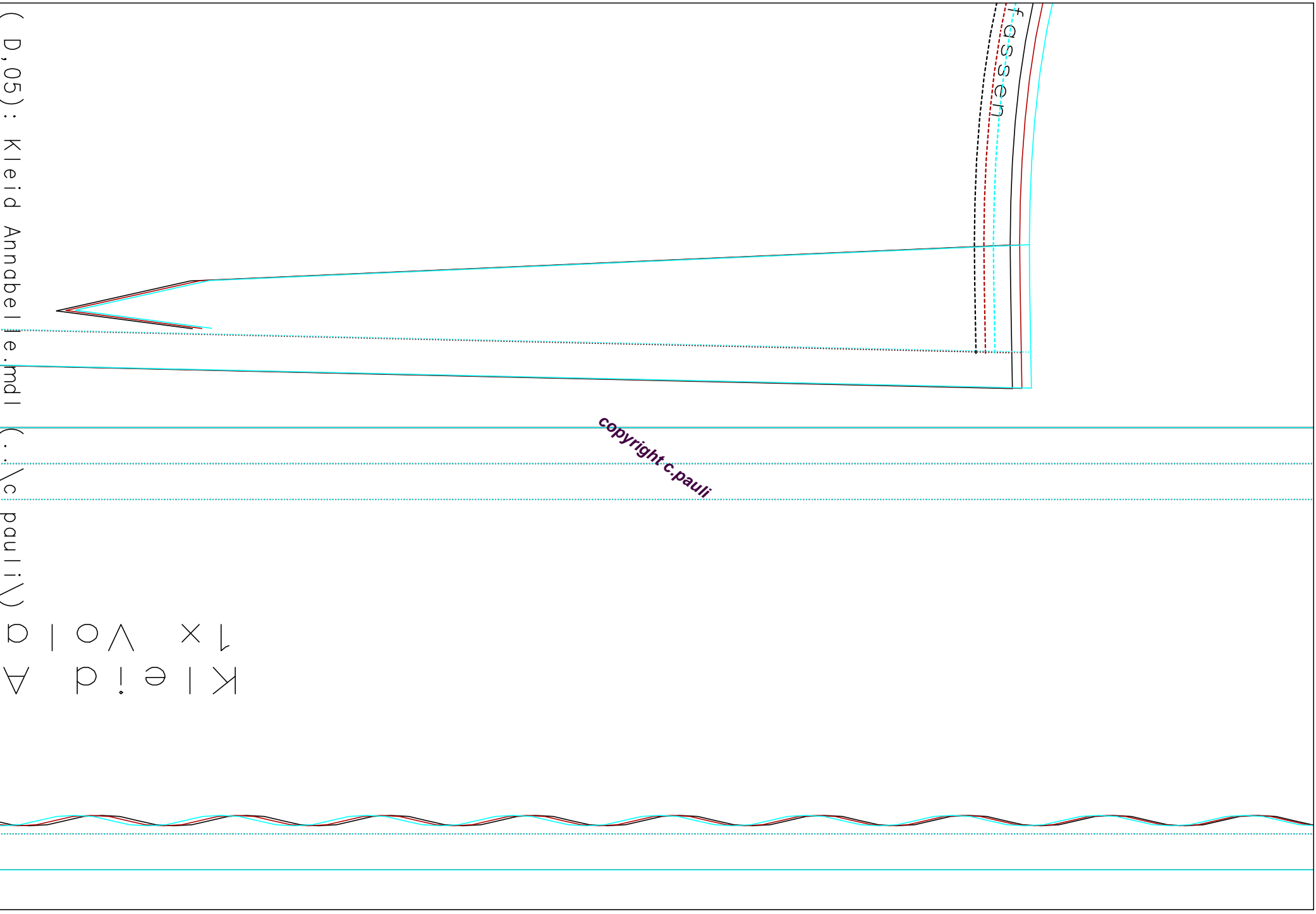


(D,02): Kleid Annabelle.mdl (..\c pauli\)

(D,03): Kleid Annabelle.mdx (c:pauli\)







fassen

copyright c.pauli

Kleid  
1x Vord

(D,05): Kleid Annabelle.mdl

(.: \c pauli\)

Q I Q

*copyright c.pauli*

(E,01): Kleid Annabelle.mdl (..\c pauli\)

*copyright c.pauli*

( E, 02) : Kleid Annabelle.mdl (..\c pauli\)

*copyright c.pauli*

( E,03) : Kleid Annabelle.mdl (..\c pauli\)

*copyright c.pauli*

(E,04): Kleid Annabelle.mdl (..\c pauli\)



Stoffbruch

copyright c.pauli

(E, 05): Kleid Annabelle.mdl

(.: \c pauli \)

