

sew

ISSUE 150 JUNE 2021

PATTERN DOWNLOAD

CUT OUT & KEEP

RUBY BLOUSE

Designer: Amanda Walker

Magazine page: 20



IN YOUR PRINT MENU, UNDER SIZE OPTIONS, BE SURE TO
SELECT '**ACTUAL SIZE/100%**', INSTEAD OF 'FIT TO PAGE'

© ACEVILLE PUBLICATIONS LTD | SEWMAG.CO.UK

All projects, templates and patterns are for personal home use only and cannot be sold or used for commercial purposes.

sew
sewmag.co.uk

sew
EXCLUSIVE

ESSENTIALS

Fabric, 1.5m (150cm)
Button

SUGGESTED FABRICS

Lightweight wovens without drape, such as cottons or broderie anglaise

SIZES

8-24

CUTTING GUIDE

Front bodice: cut one on the fold

Back bodice: cut one pair

Sleeve: cut one pair

Cuff: cut one pair

Front and back skirt: cut two on the fold

Neck binding: cut one on the bias

1.5cm seam allowance throughout, unless otherwise stated.

Broderie is back with a bang! Get ahead of the trend with our

Ruby Blouse

The hallmark of Parisian glam, broderie anglaise is an effortless way to zhooosh up your wardrobe as the temperatures soar. Created by **Amanda Walker**, this blouse brings oodles of little details to love, like the keyhole back detail, peplum skirt and those delicately puffed sleeves. Who could resist it? It also makes for the perfect level-up challenge for starter stitchers.

1 Download the pattern from sewmag.co.uk, then print and follow the cutting guide. Stitch darts into the front bodice piece, from the side edge of the darts to the points marked on the pattern. Press the darts down towards the waistline. Neaten the side edges of the front and back bodice, across the shoulders of both the front and

back bodice, and the centre-back edges of the back bodice.

2 Position the front and back bodice pieces together, right sides facing, then match, pin and stitch the shoulder seams together. Press the seams allowances open. Match and sew the centre-back seam from the base of the bodice to the notch marked on the pattern. Press the seam allowance open and continue to press in the seam allowance above the end of the stitching up into the neckline.

3 Fold and press in 1cm on either side of all the bias strips or use a bias binding folder to complete this process. Open one side of the neck binding bias strip and position it around the neckline on the wrong side. Position the binding in line with the neatened centre-back edges. Pin in place and stitch along the fold line pressed into the bias strip.

4 Fold the bias strip over onto the right side of the neckline and position the remaining folded edge over the stitching line, pin and edgestitch in place sandwiching the raw edge of the neckline inside the bias binding. Re-fold the seam allowance at the top of the opening, then sew down and up to secure the seam allowance of the opening. Match, pin and stitch the back and front bodice side

edges together. Press the seam allowance open.

5 Neaten the side edges of both sleeves. Adjust the stitch length to number five and stitch two rows of gathering stitches, within the seam allowance, around the head of the sleeves, starting and finishing as indicated on the pattern piece. Make two rows of gathering stitches across the base of each sleeve, between the marked notches. Pull up the gathering stitches across the base of the sleeve until they measure the length of the cuffs.

6 Press a 1.5cm seam allowance in on one of the long edges on both cuffs. Position and stitch the remaining long edge of the cuffs to the right side of the gathered sleeve bases. Match, pin and sew the underarm sleeve seams together, right sides facing, then continue to stitch into the sleeve cuffs. Press the seams open and turn the sleeves to the right side. Re-fold the pressed seam allowance and position the folded edge over the gathered stitching line and edgestitch in place on the wrong sides of the sleeves, sandwiching the raw edges inside the cuffs.

7 Pull the gathering threads up in the head of the sleeve, then place the sleeves, matching the notches, into the armholes of the bodice. Match the side seams and the underarm seam of the sleeves together. Distribute the gathers evenly and when you are

UP CLOSE AND PERSONAL



As broderie anglaise has tiny holes, you may want to consider adding facings or a lining

happy, pin and sew the sleeves in place. Neaten around the seam allowances of the armholes.

8 Neaten the side edges of the front and back skirt pieces. Lay the front skirt over the back piece, match the side seams together and stitch. Press the seam open. At the waistline of the skirt, make two lines of gathering stitches right around the waistline within the seam allowance. Pull the threads up and evenly distribute the gathers until the waistline measures the same as the base of the bodice.

9 Match the side seams of the bodice and the skirt together, pin and stitch in place. Neaten the seam allowance together. Neaten the base of the skirt, then press up the 2.5cm hem and edgestitch the hem in place. Make a hand stitched thread loop on the left-hand top edge of the neck opening and stitch a button to the right-hand side.

We made our top in broderie anglaise in mint, £20, stoffstil.co.uk

Core Skill

ROULEAU LOOP

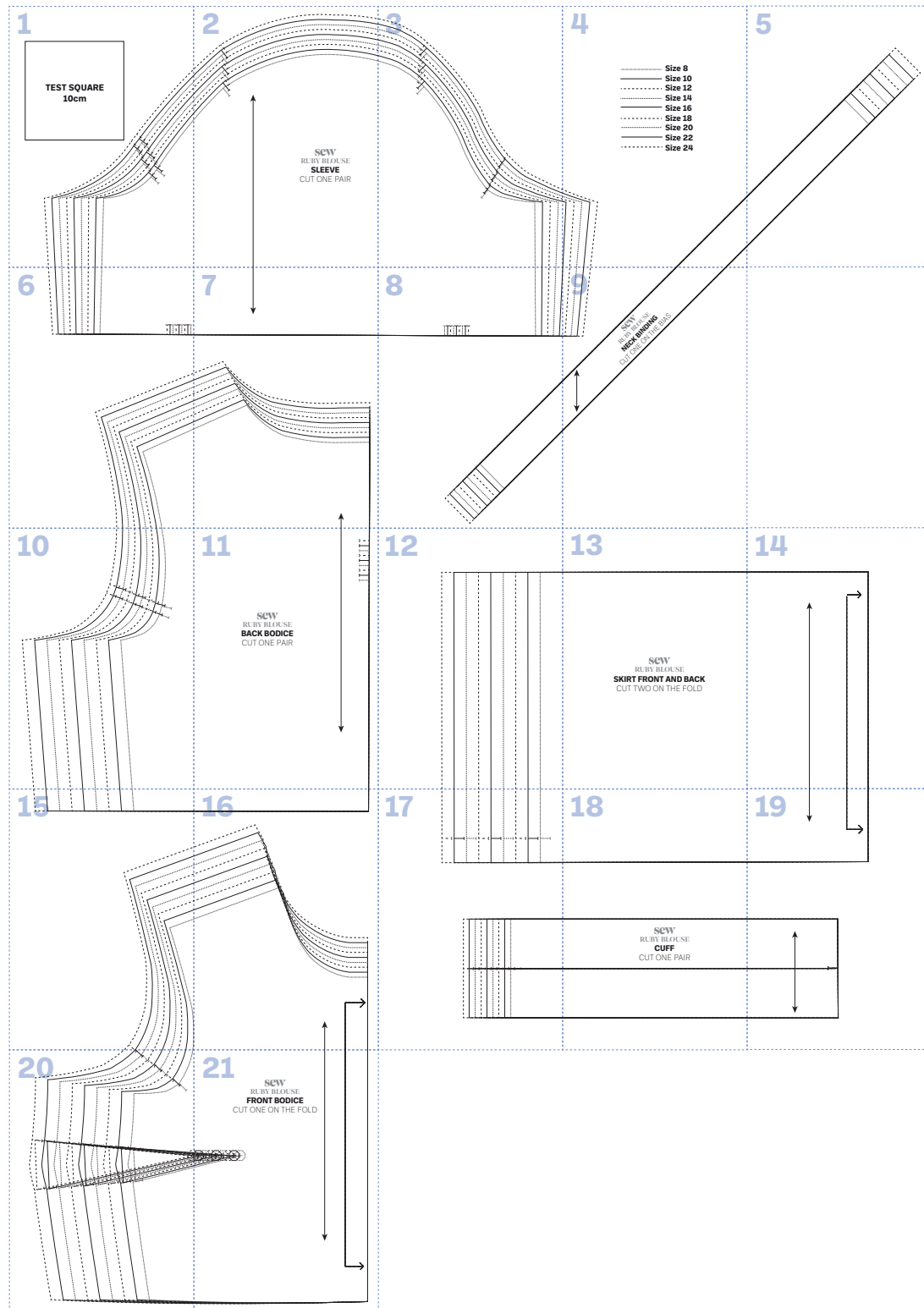
This top would also suit a rouleau loop at the back, cut a strip, 3cm x 10cm, on the diagonal grain. Fold in half, aligning the long edges, right sides together. Sew a 1cm seam, leaving the long thread ends loose, then tie the ends to a blunt-tipped needle. Pass the needle into the tube and out the other end, pulling gently so the fabric turns inside out, then press.

FREE
TEMPLATE
DOWNLOAD
sewmag.co.uk/templates

Our exclusive patterns are now available to download in sizes

8-24

PATTERN LAYOUT



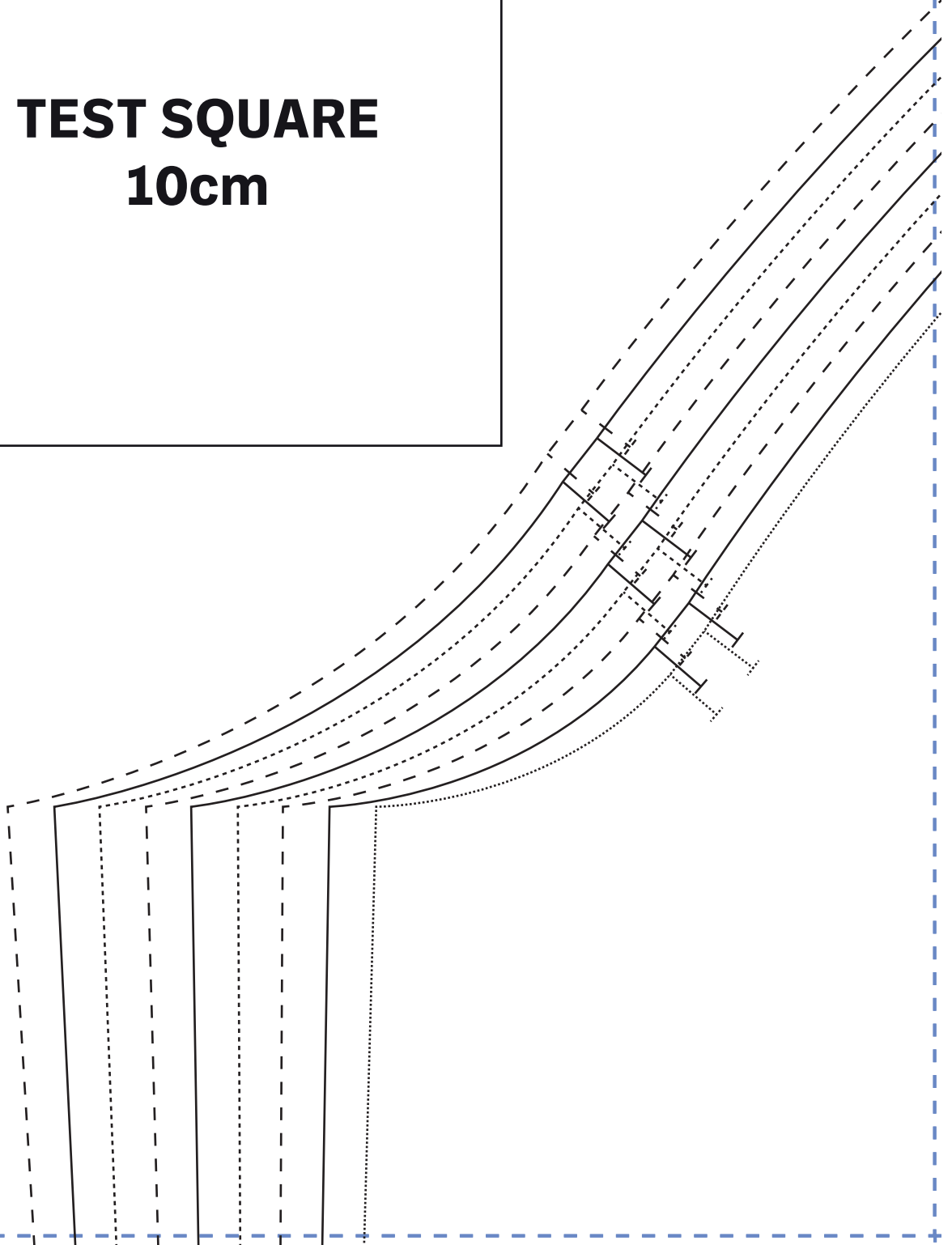
YOUR SIZING CHART

	8	10	12	14	16	18	20	22	24
Bust cm	78	83	88	93	98	103	108	113	118
Waist cm	59	64	69	74	79	84	89	94	99
Hip cm	85	88	93	98	103	108	113	118	123
Back neck to waist	39	40	41	42	43	44	45	46	47

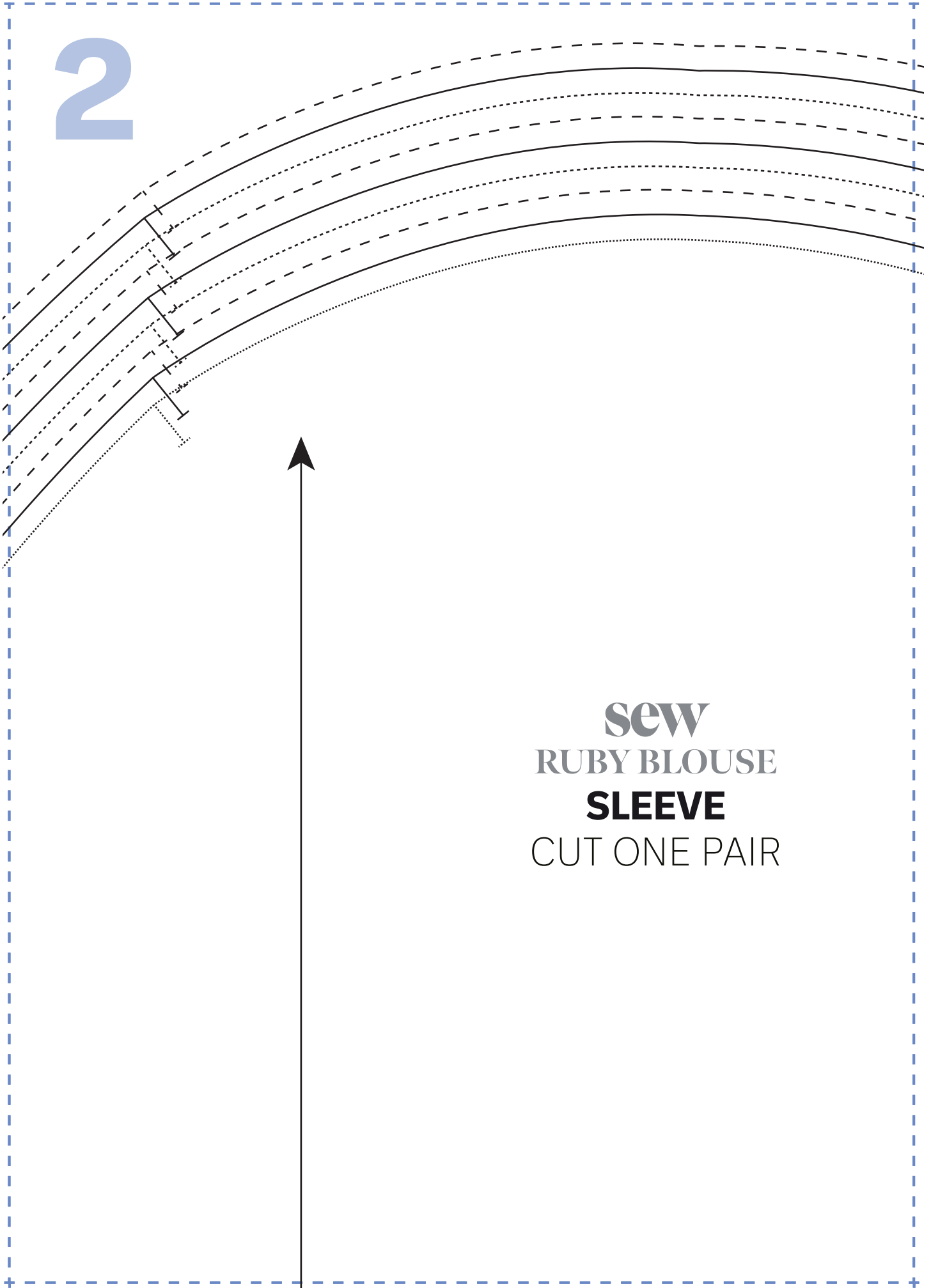
Once you have your body measurements, choose the closest size from the chart below. Remember, there will be variations depending on which fabric and pattern you choose, so always make a toile first.

1

TEST SQUARE
10cm

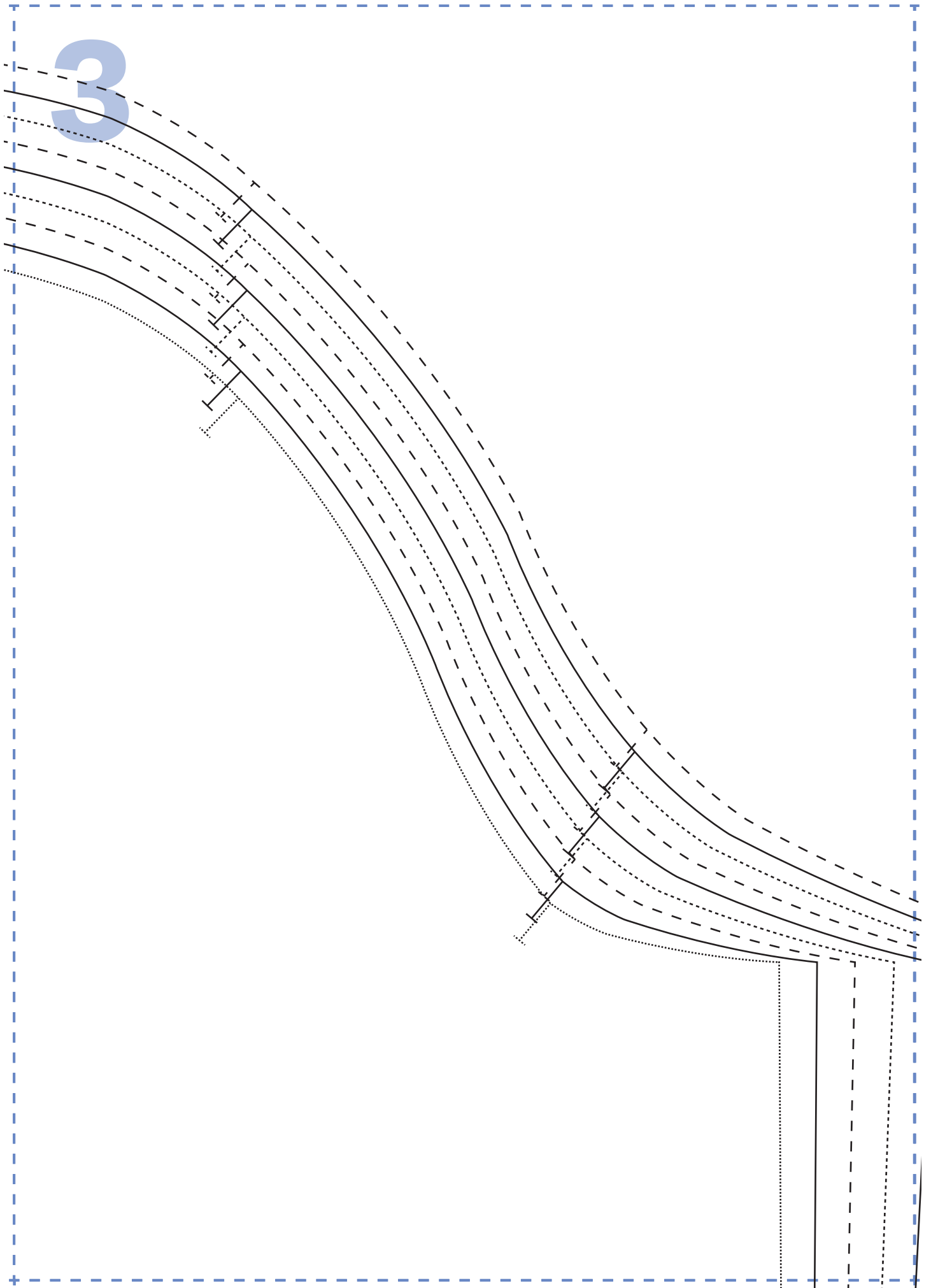


2



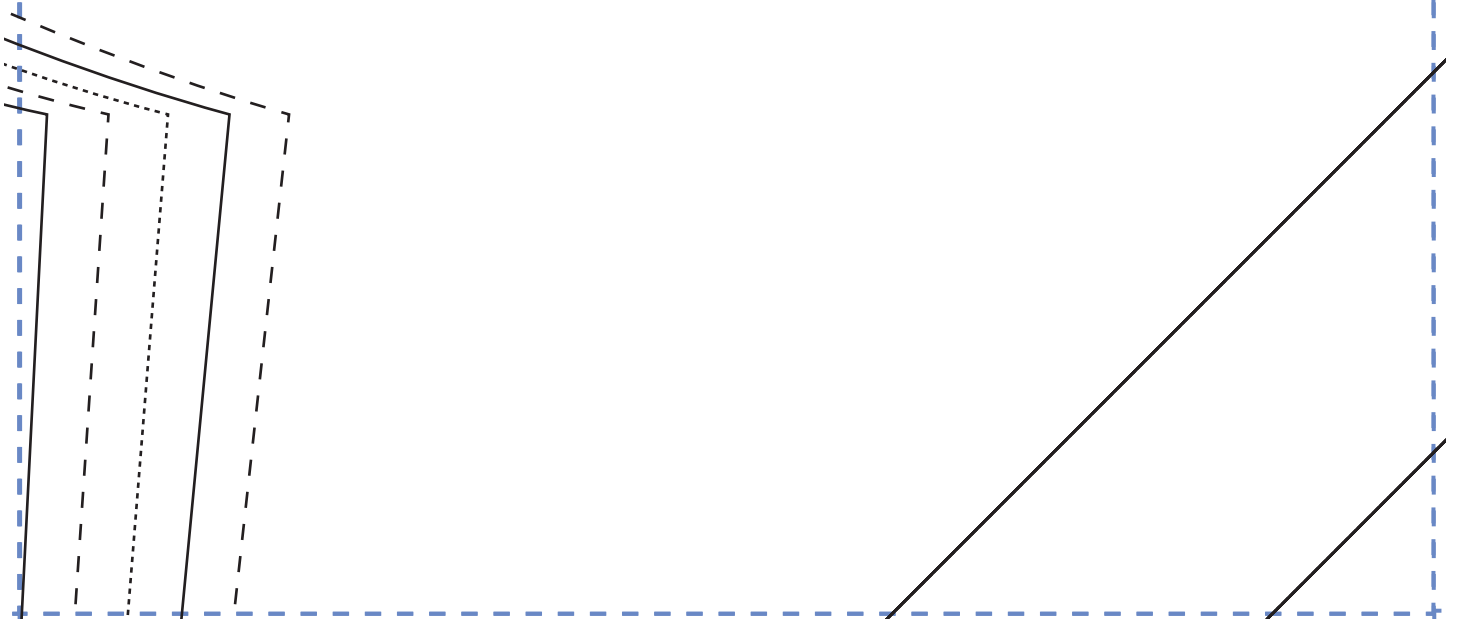
sew
RUBY BLOUSE
SLEEVE
CUT ONE PAIR

3

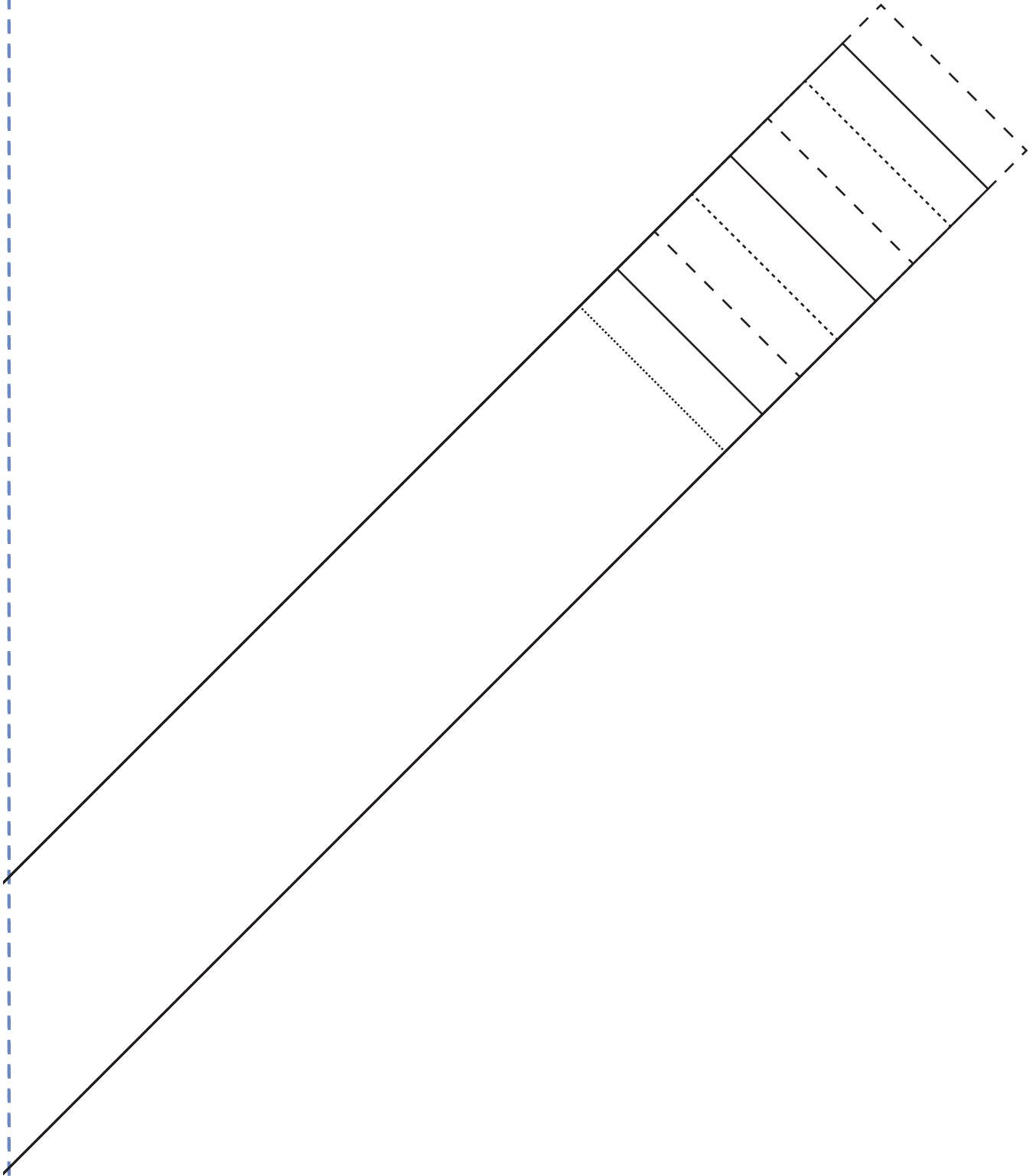


4

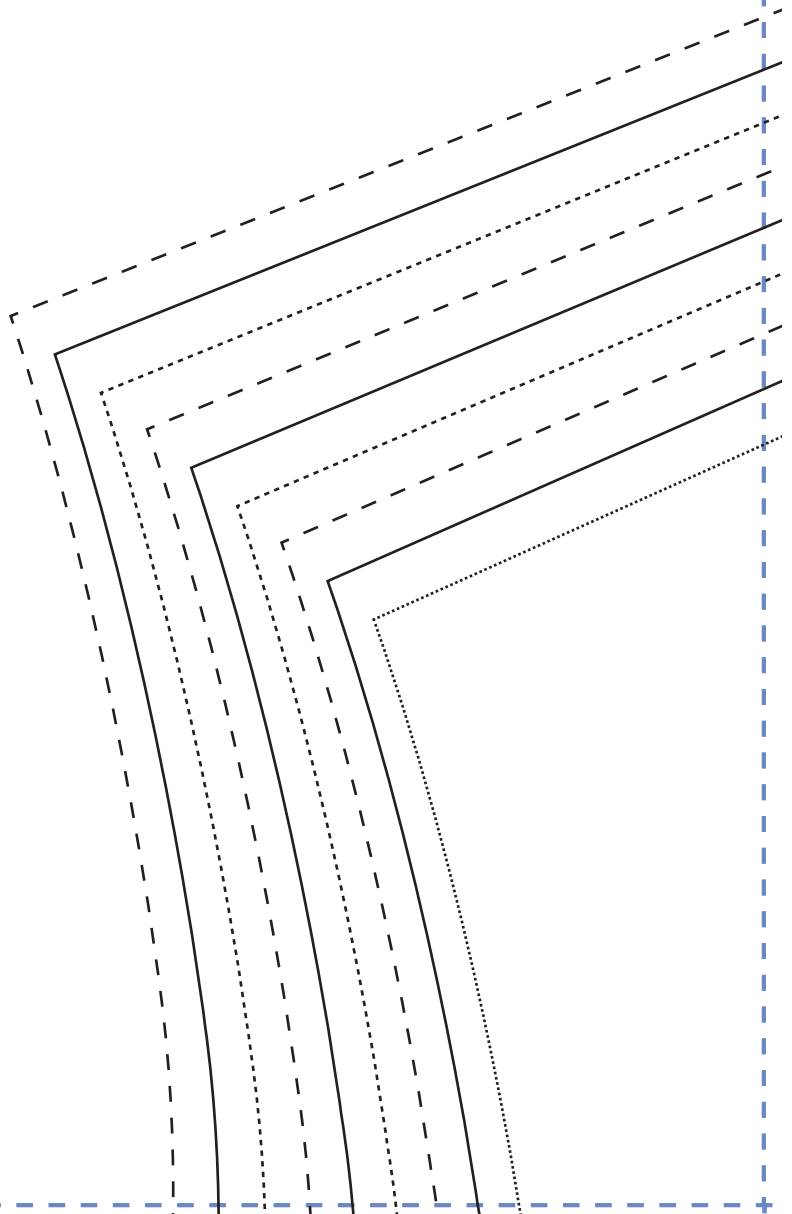
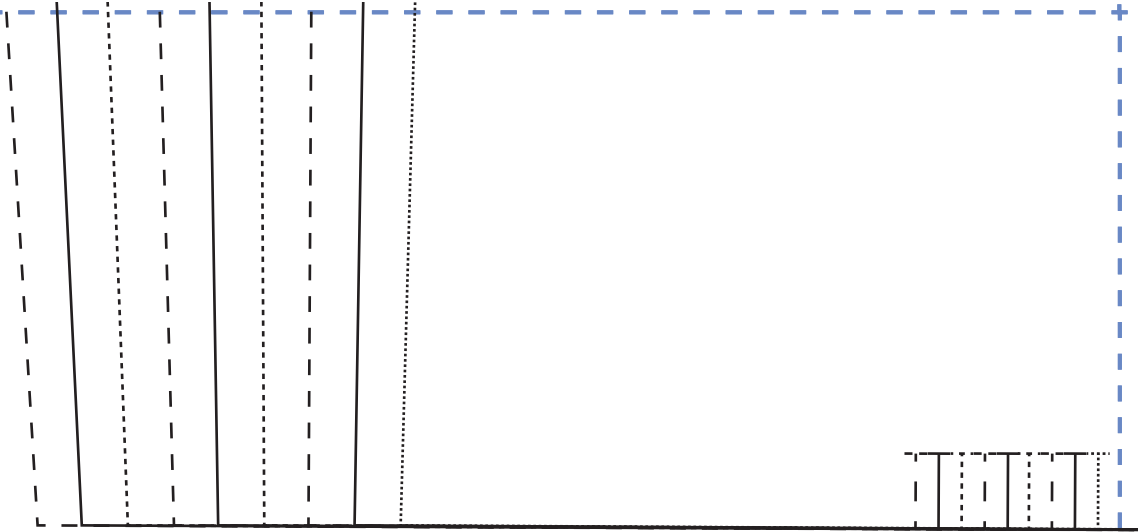
- **Size 8**
- **Size 10**
- - - - **Size 12**
- **Size 14**
- **Size 16**
- - - - **Size 18**
- **Size 20**
- **Size 22**
- - - - **Size 24**



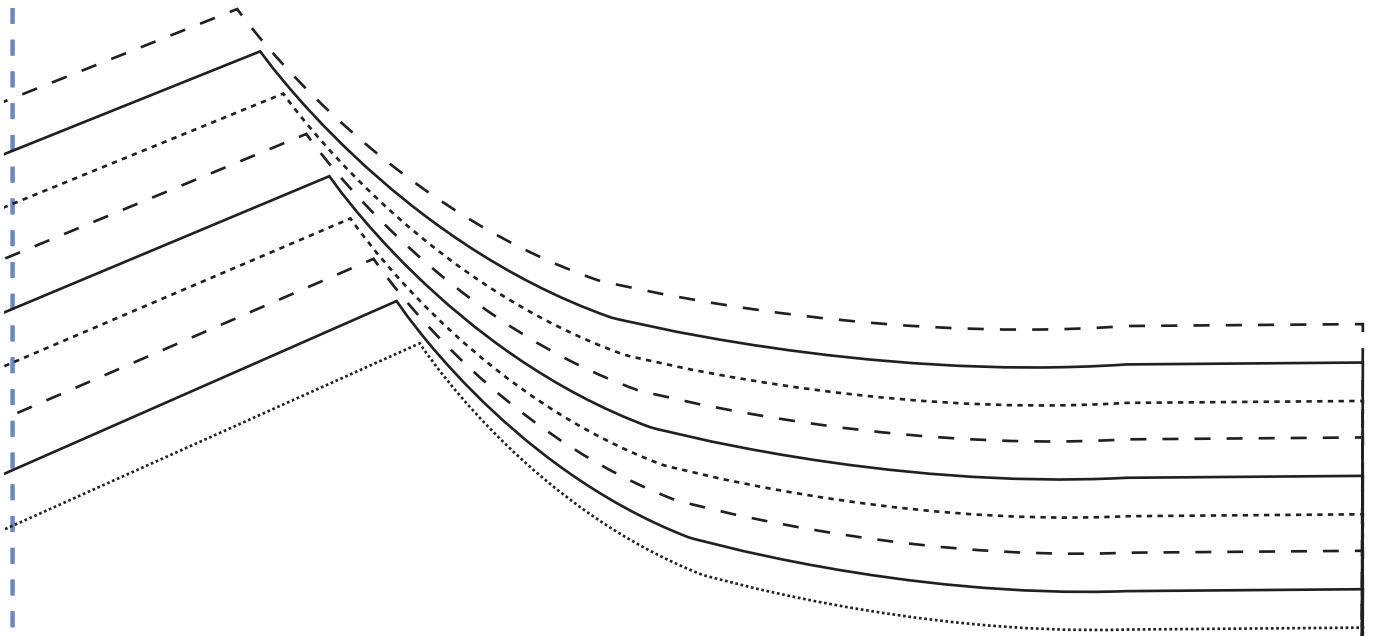
5



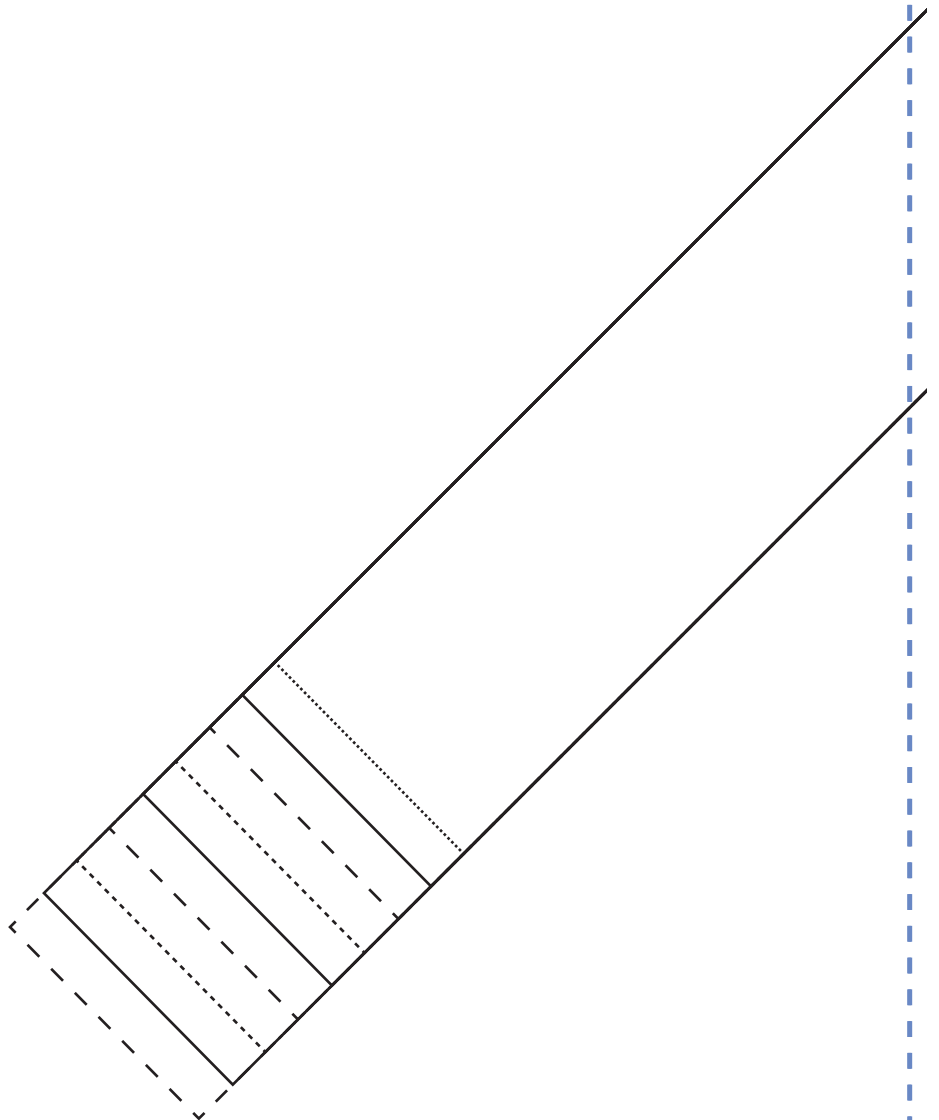
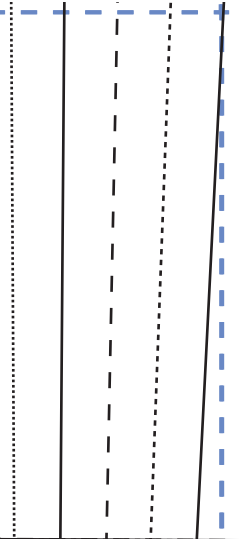
6



7



8

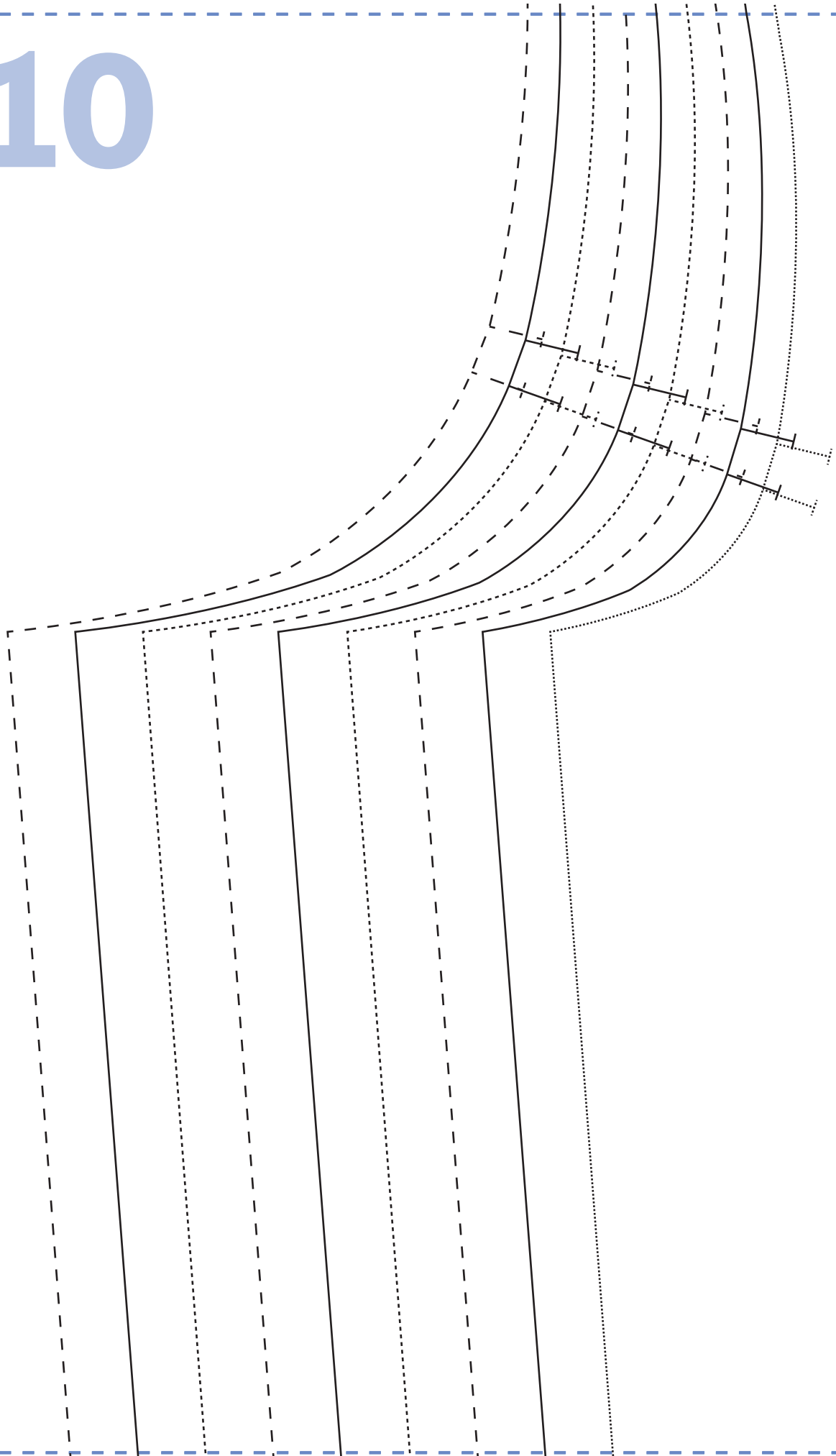


9

SEW
RUBY BLOUSE
NECK BINDING
CUT ONE ON THE BIAS

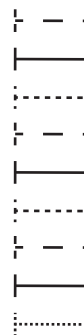


10

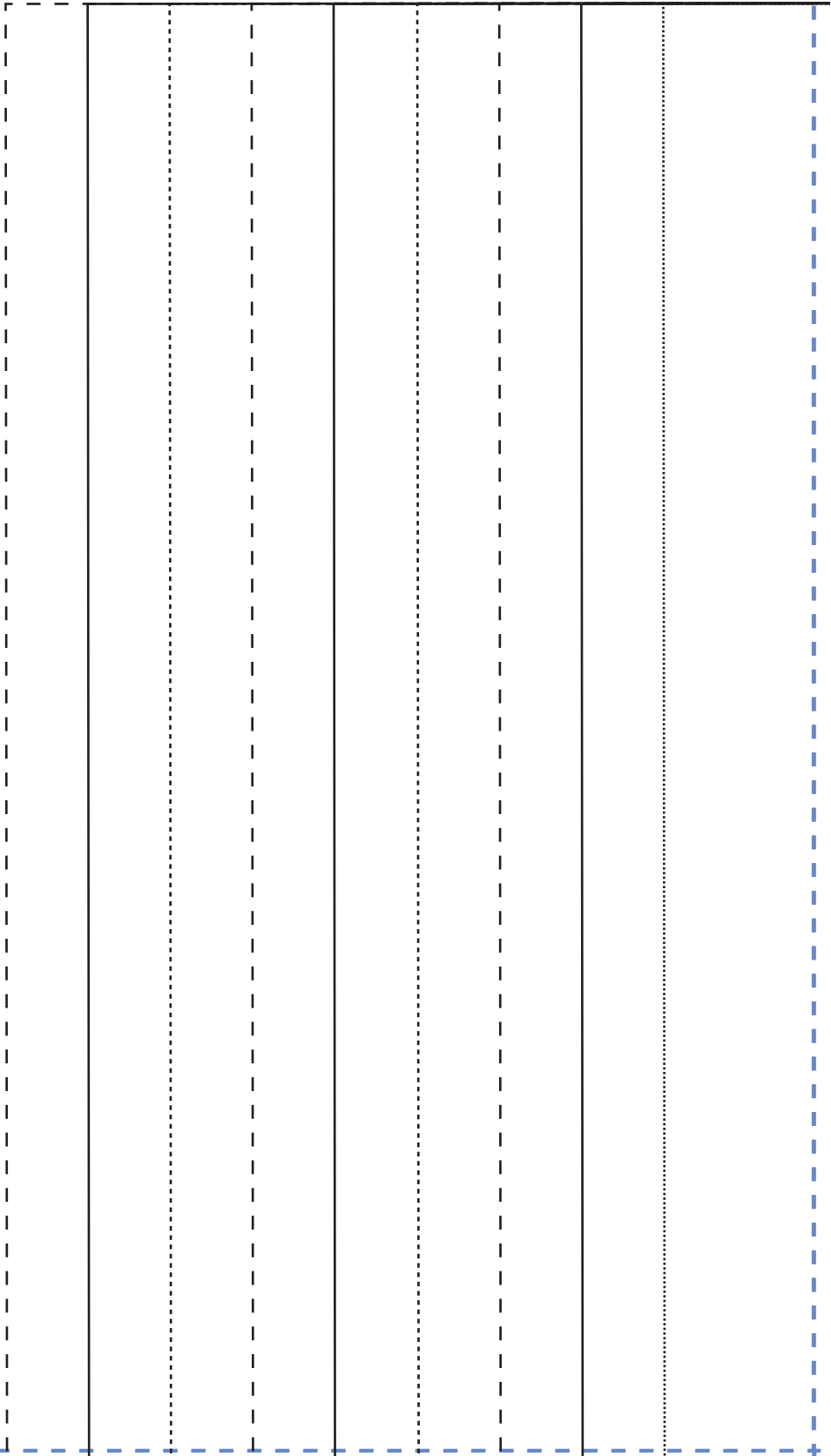


11

sew
RUBY BLOUSE
BACK BODICE
CUT ONE PAIR



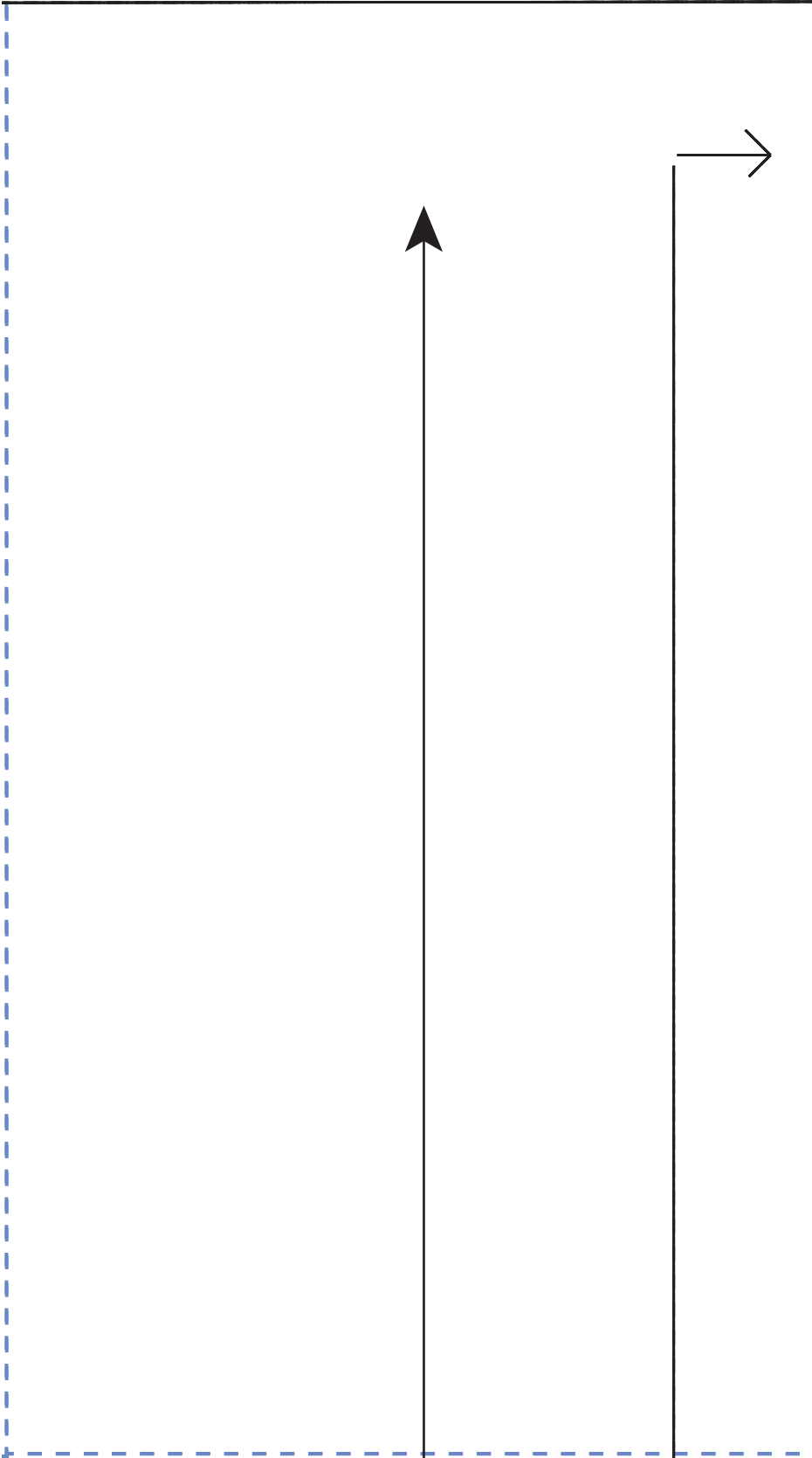
12



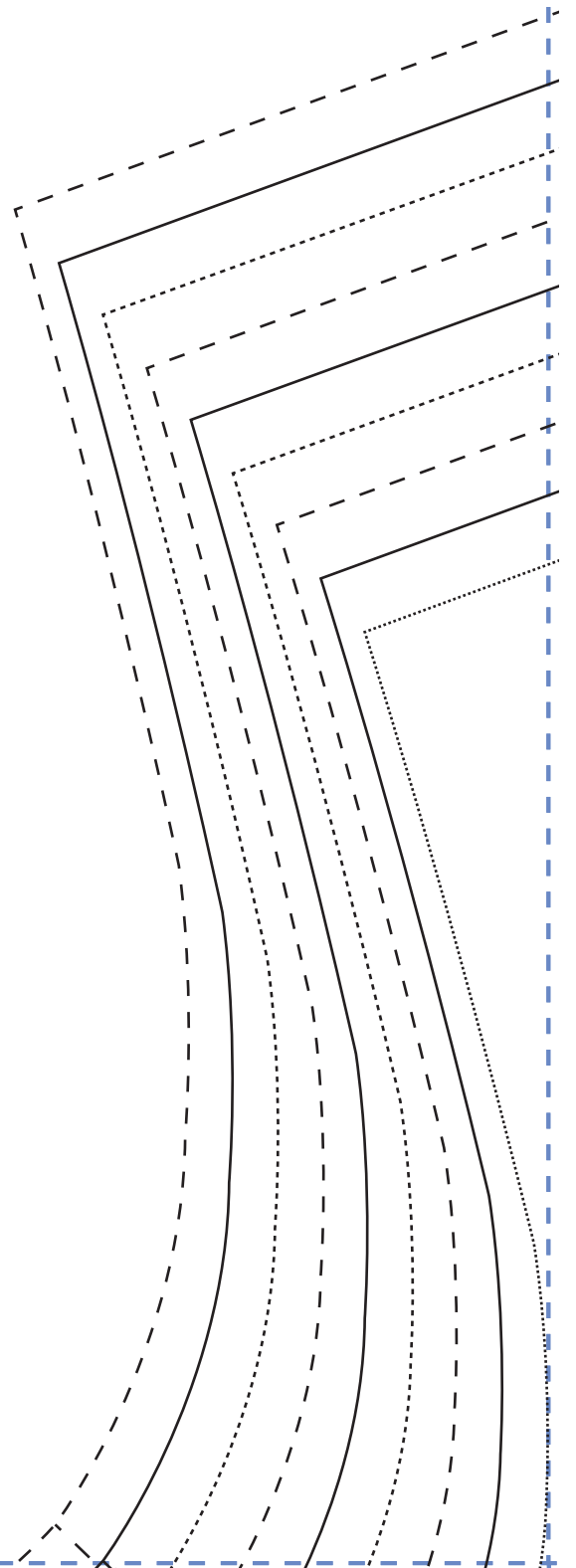
13

sew
RUBY BLOUSE
SKIRT FRONT AND BACK
CUT TWO ON THE FOLD

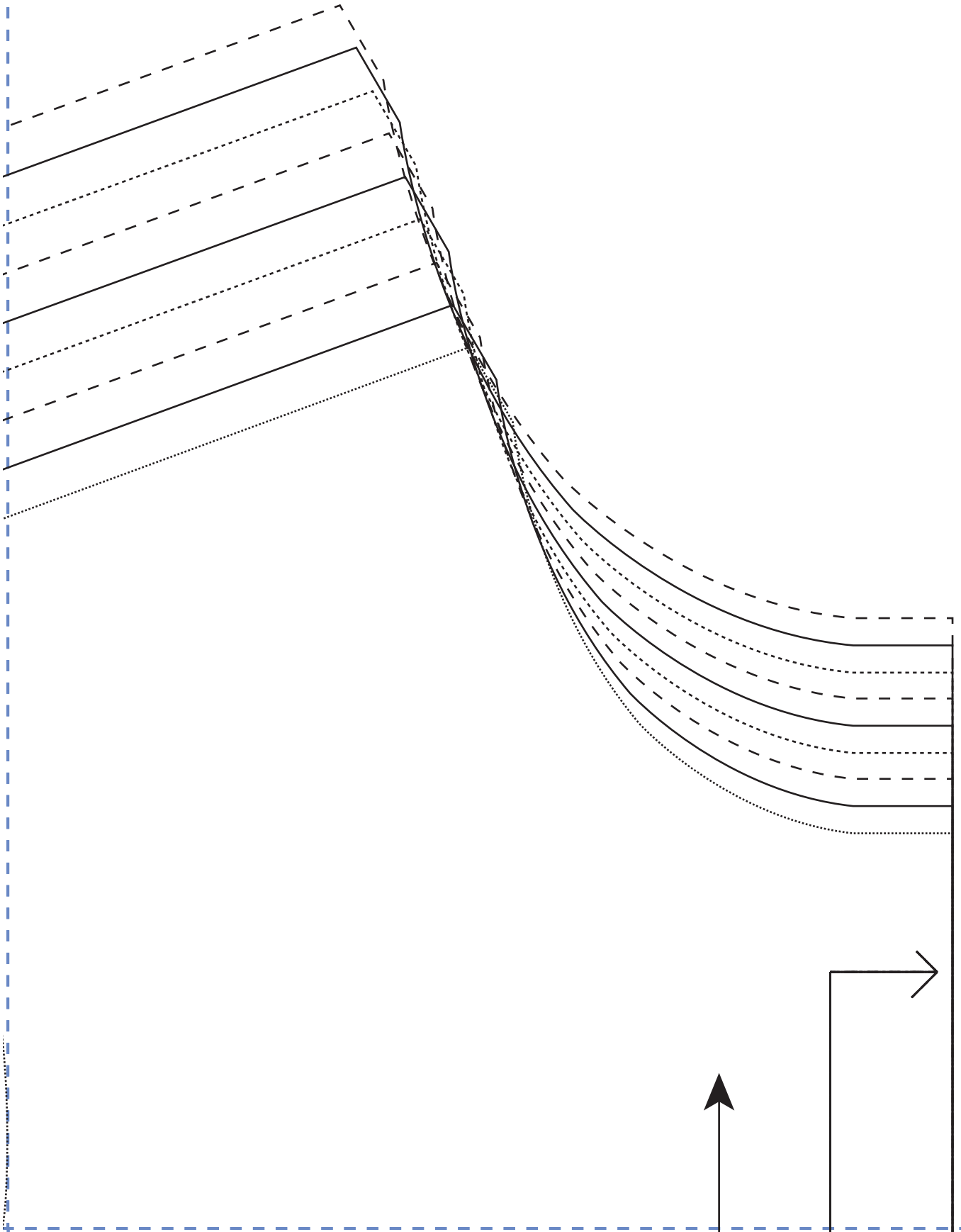
14



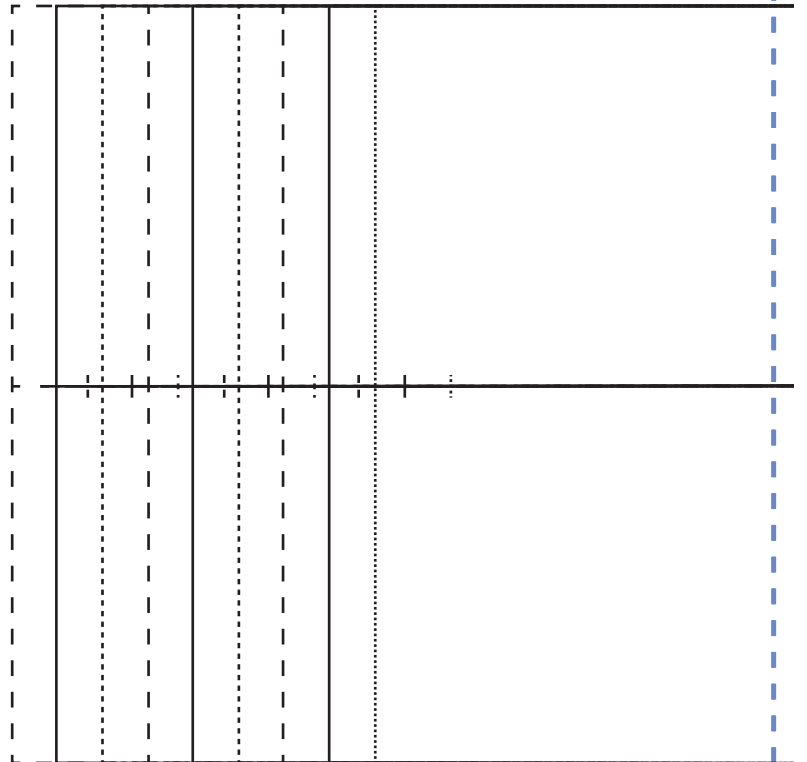
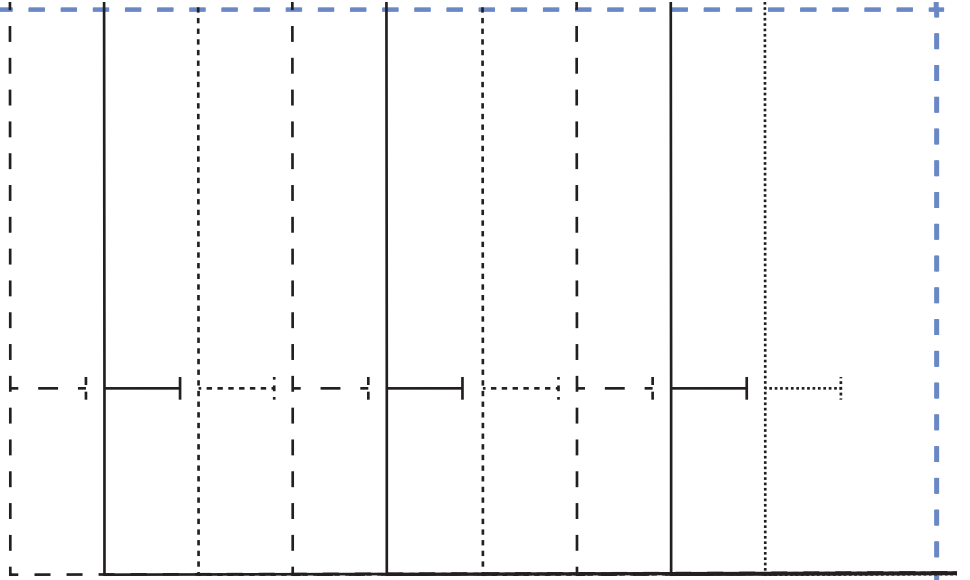
15



16



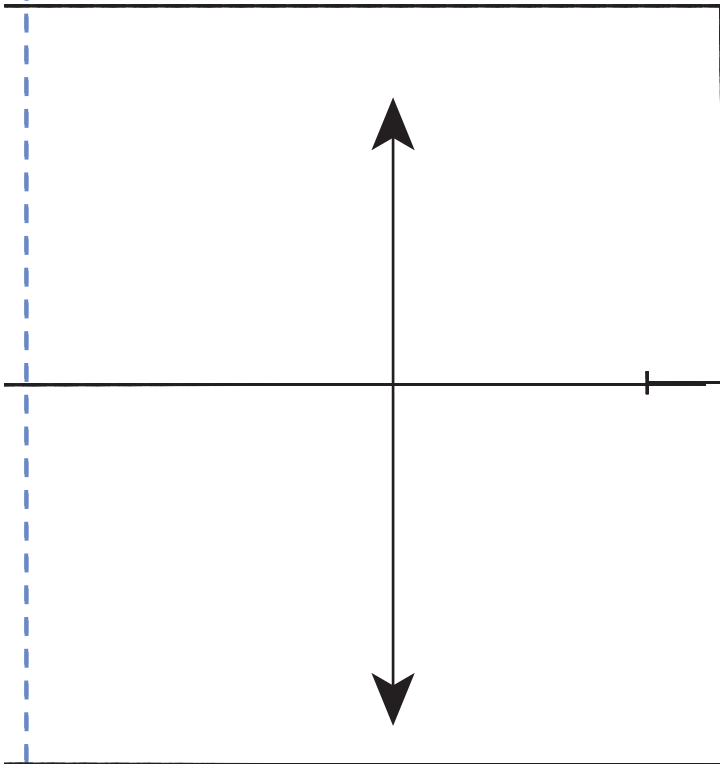
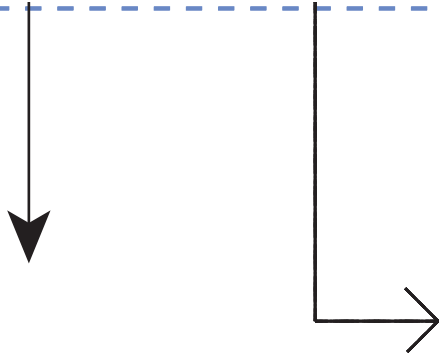
17



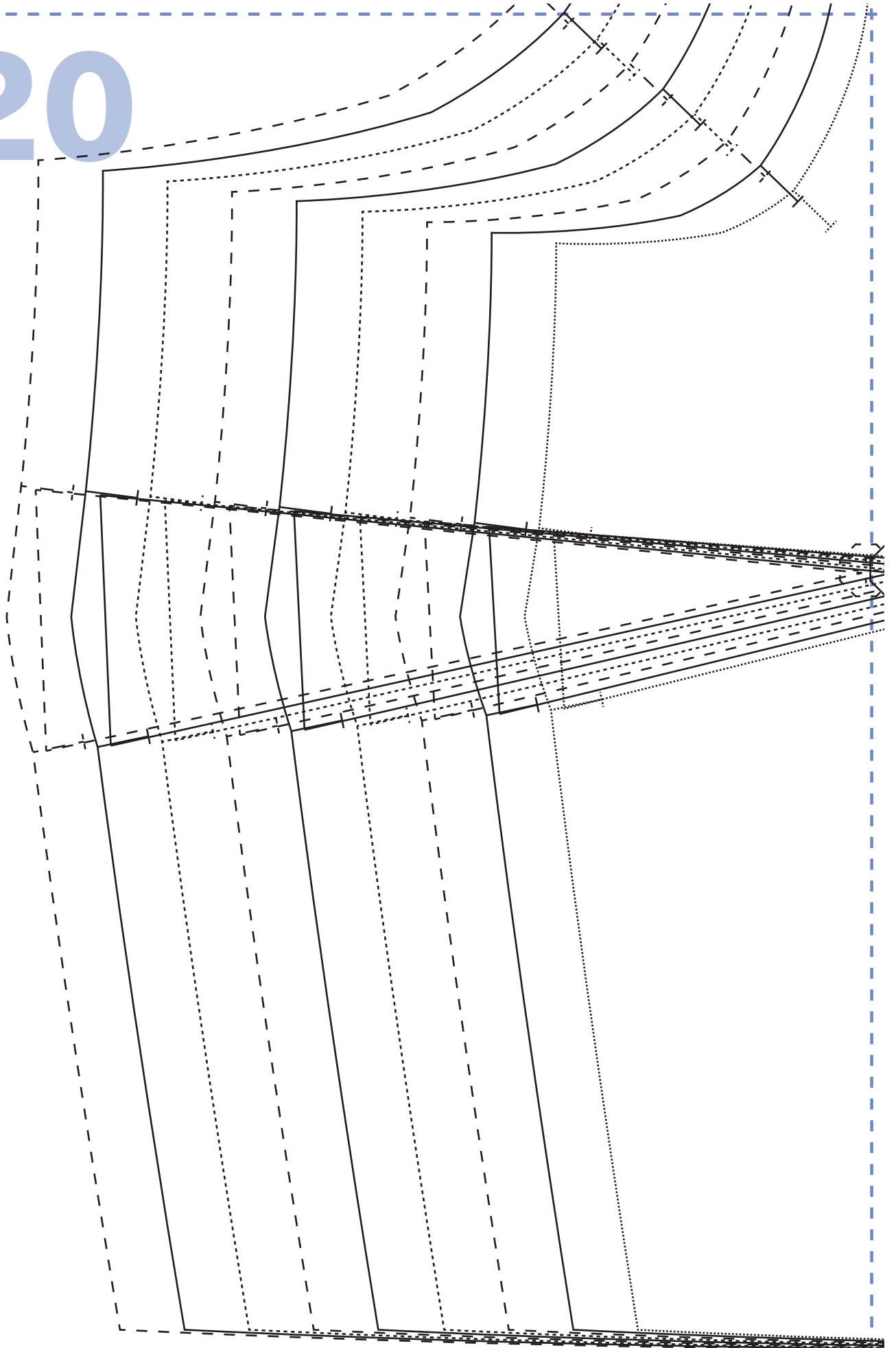
18

sew
RUBY BLOUSE
CUFF
CUT ONE PAIR

19



20



21

sew
RUBY BLOUSE
FRONT BODICE
CUT ONE ON THE FOLD

