

sew

Issue 112 July 2018

SADIE DRESS PATTERN

Use these guides to get started today

PRINT
OUT
& KEEP

IN YOUR PRINT MENU, UNDER SIZE OPTIONS, BE SURE TO SELECT TO PRINT 'ACTUAL SIZE', INSTEAD OF 'FIT TO PAGE'

Title: Sadie dress
Designer: Amanda Walker
Magazine page: 32

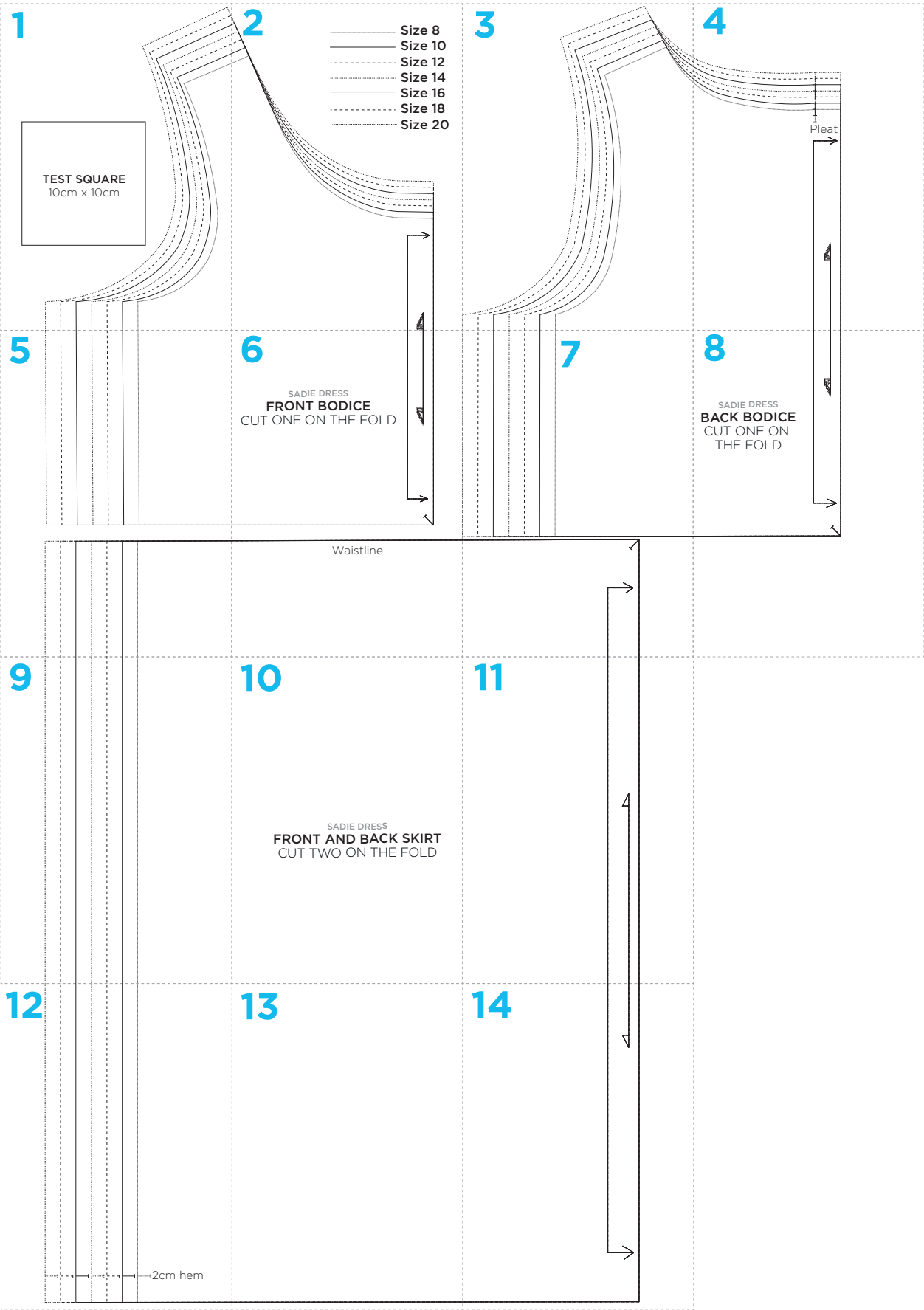


© ACEVILLE PUBLICATIONS LTD | SEWMAG.CO.UK

All projects, templates and patterns are for personal home use only and cannot be sold or used for commercial purposes.

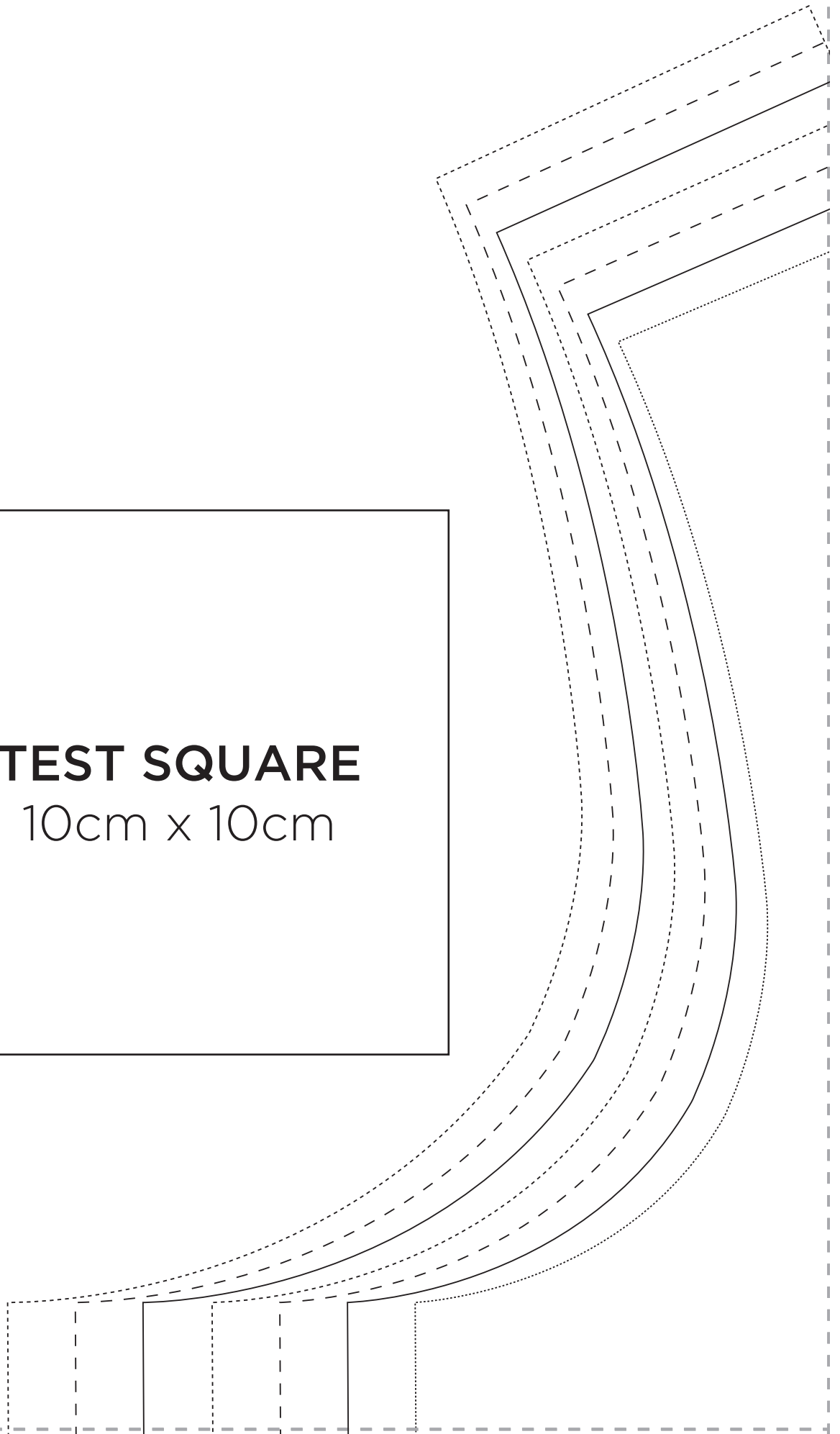
sew sewmag.co.uk

SADIE DRESS PATTERN LAYOUT



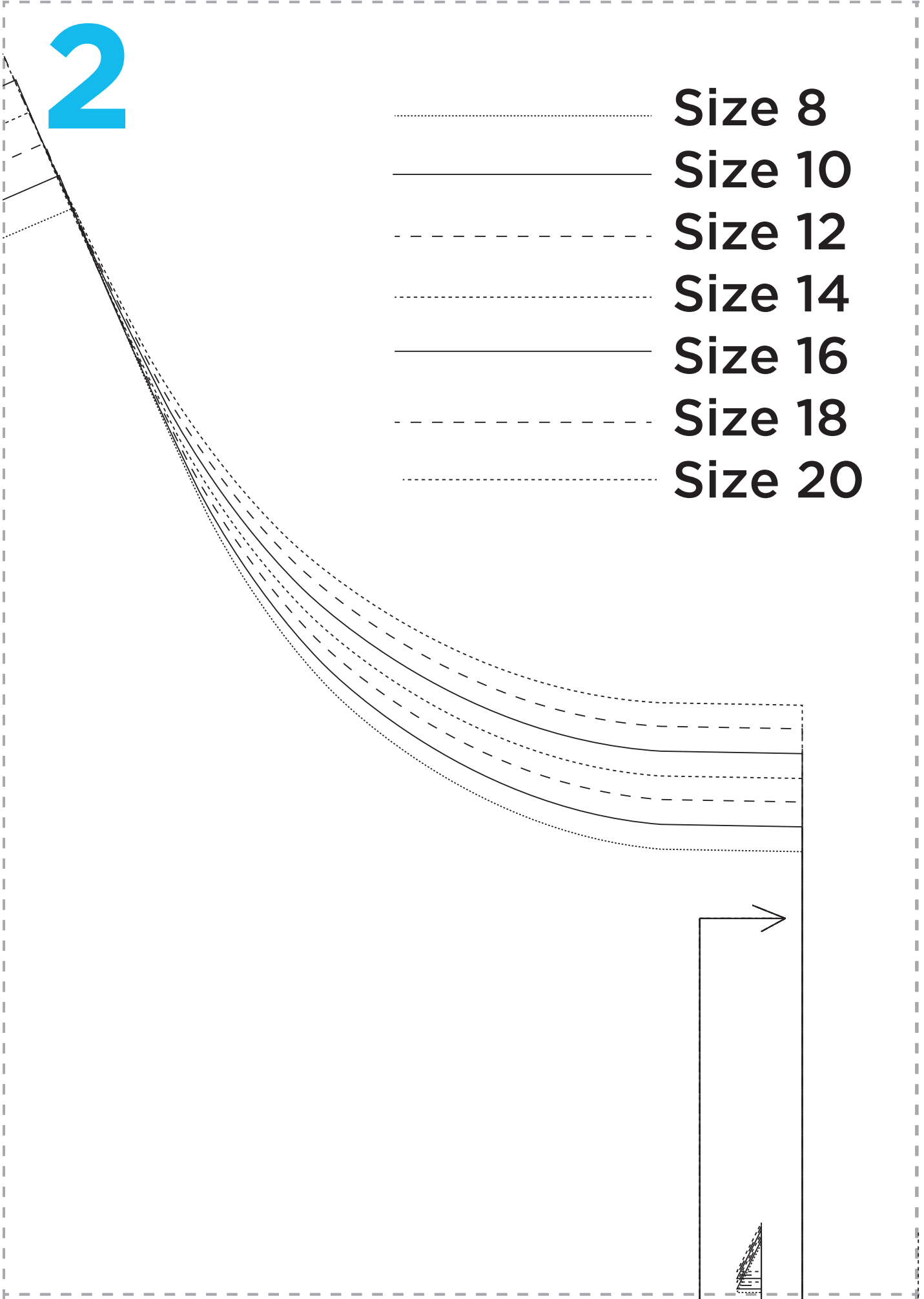
1

TEST SQUARE
10cm x 10cm

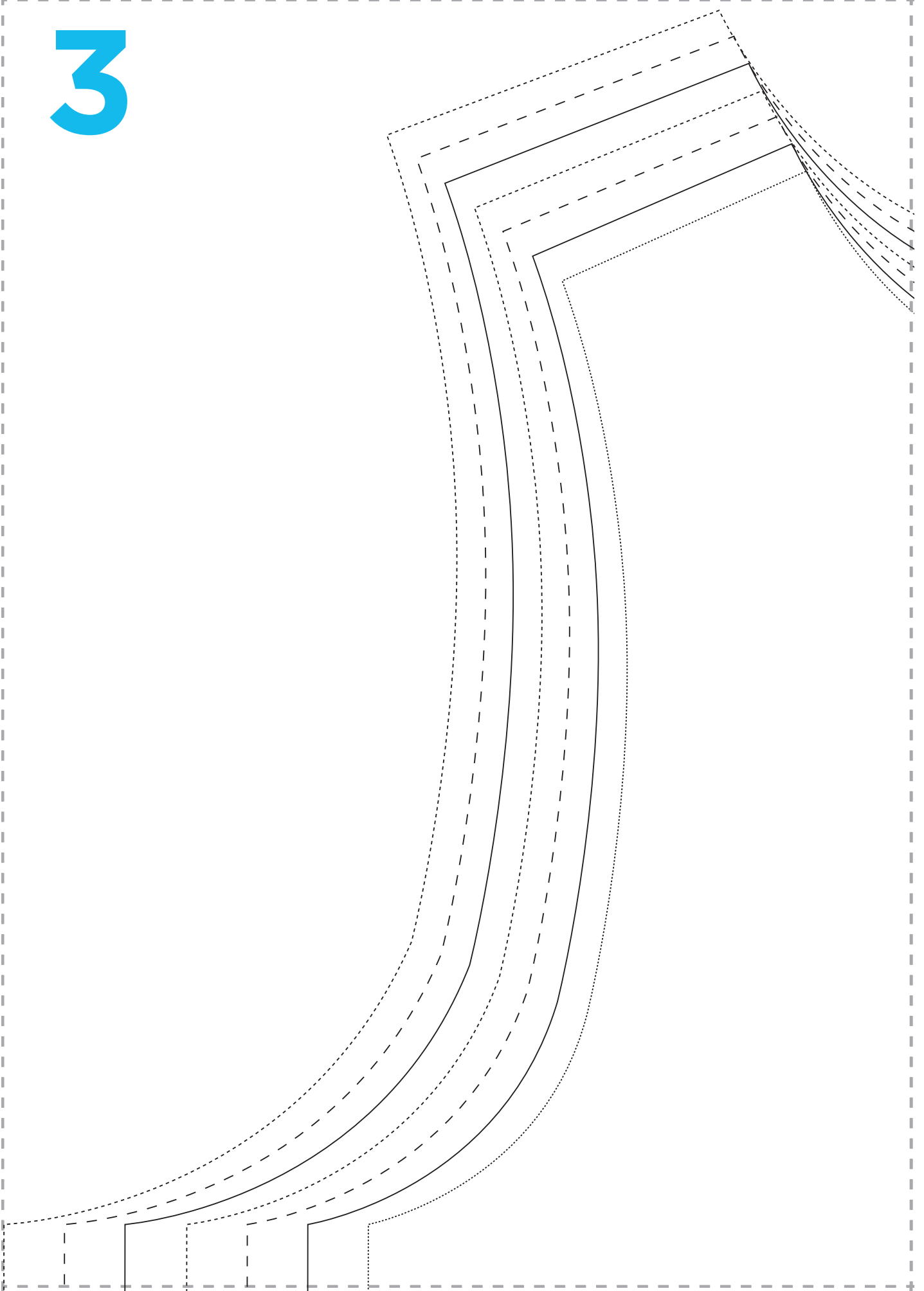


2

- Size 8
- _____ Size 10
- - - - - Size 12
- Size 14
- _____ Size 16
- - - - - Size 18
- Size 20



3

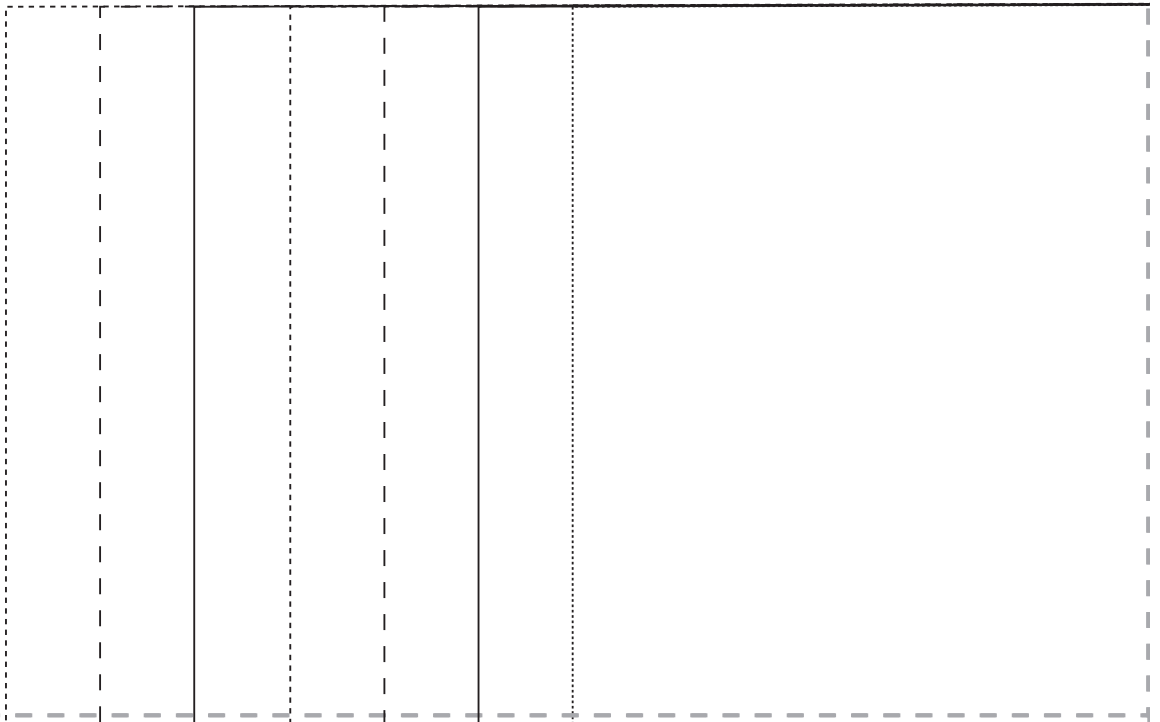
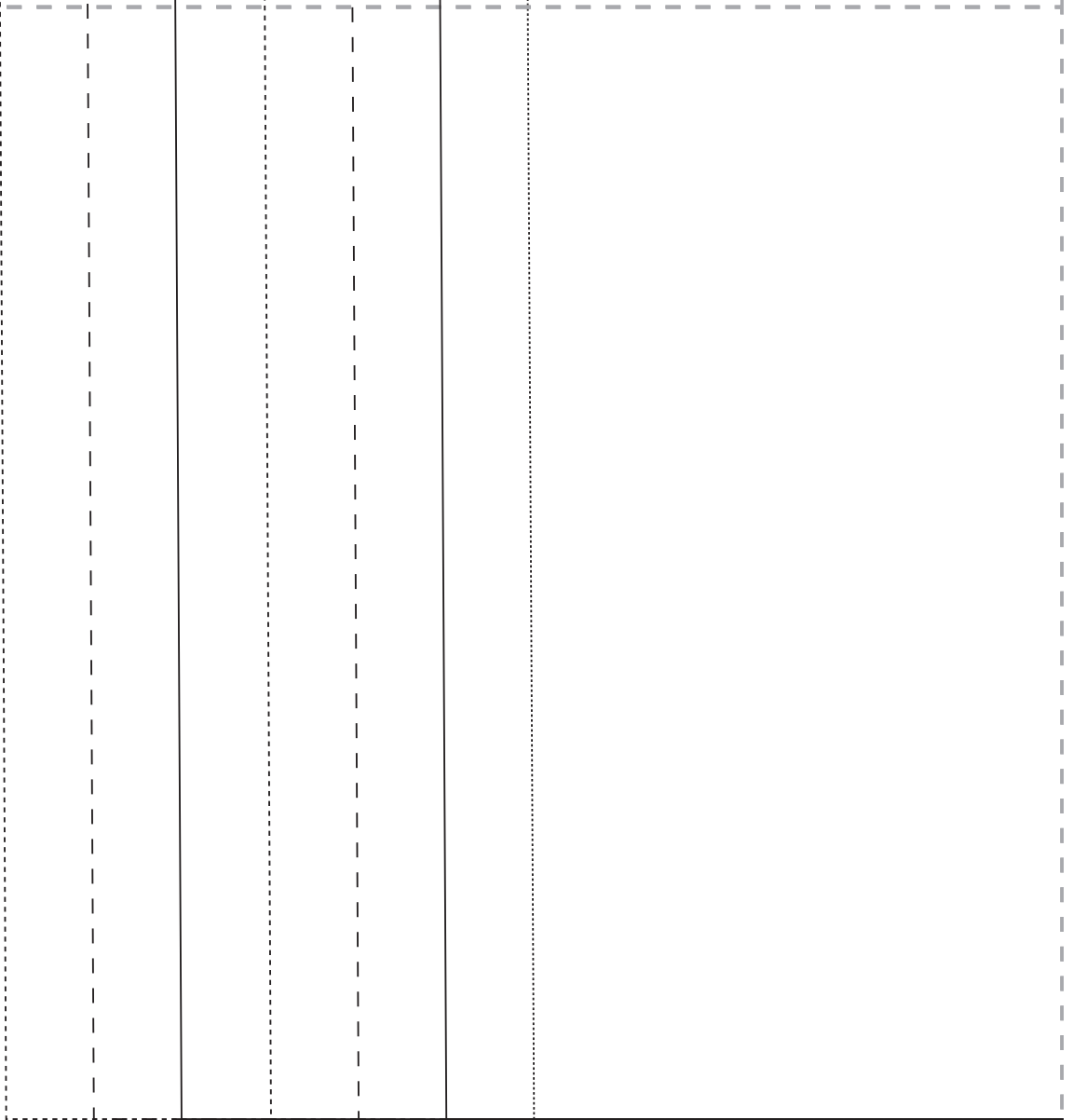


4

Pleat



5

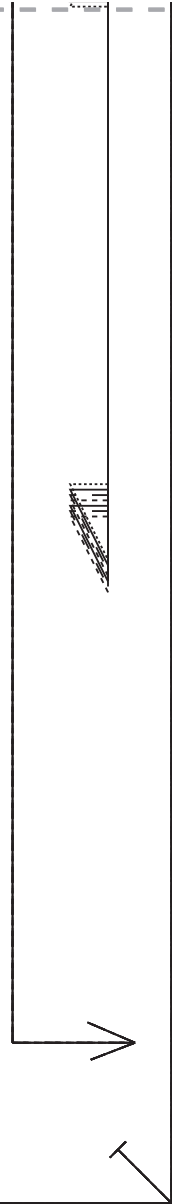


6

SADIE DRESS

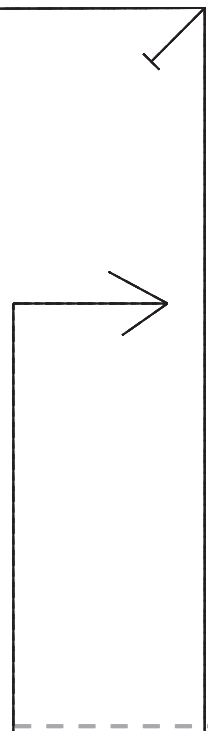
FRONT BODICE

CUT ONE ON THE FOLD



Waistline

7



8

SADIE DRESS
BACK BODICE
CUT ONE ON
THE FOLD



9

10

SADIE DRESS
FRONT AND BACK SKIRT
CUT TWO ON THE FOLD

11



12

2cm hem

13

14

