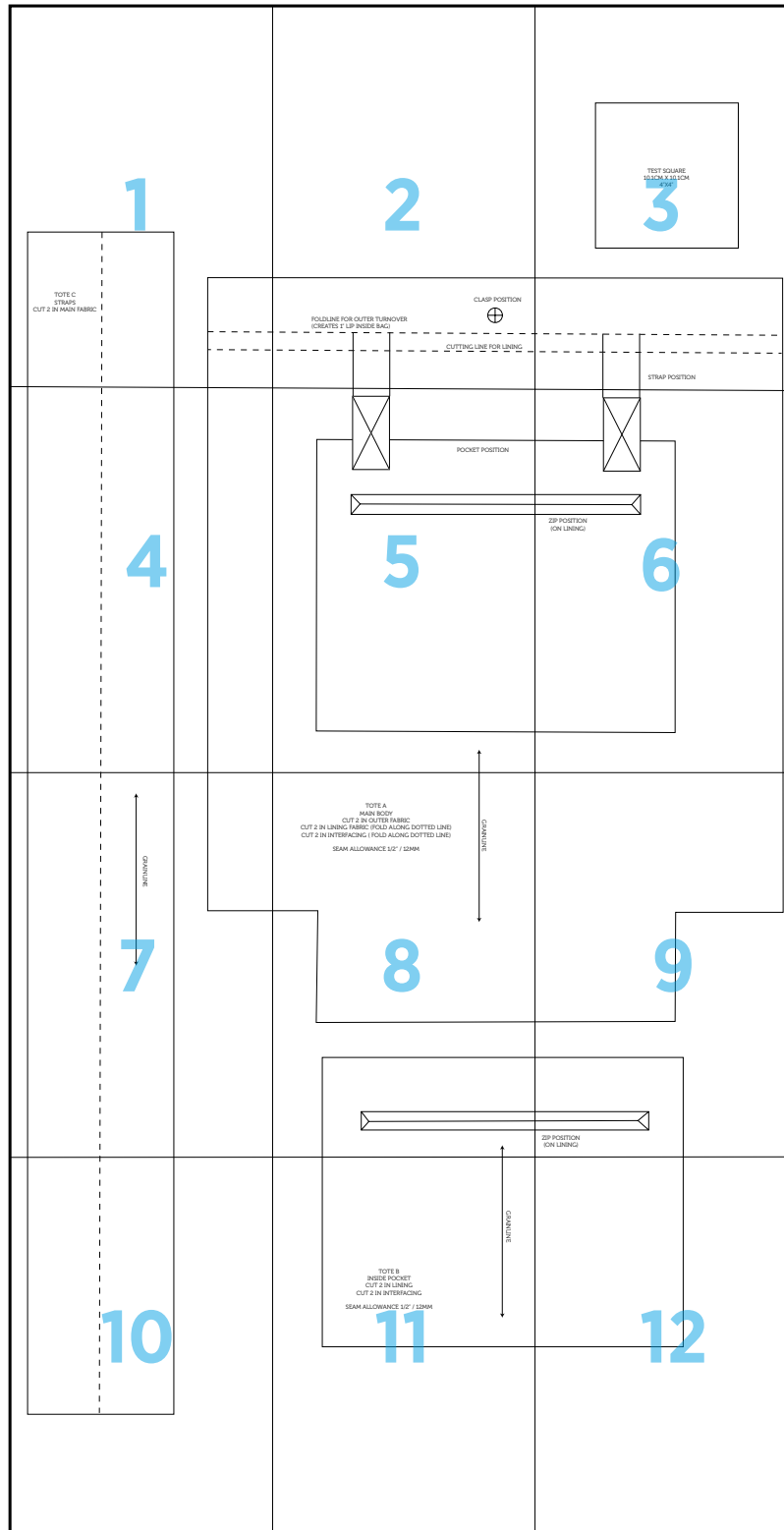


Pleather Tote



1



TOTE C
STRAPS
CUT 2 IN MAIN FABRIC

2



CLASP POSITION



FOLDLINE FOR OUTER TURNOVER
(CREATES 1" LIP INSIDE BAG)

CUTTING LINE FOR LINING

3



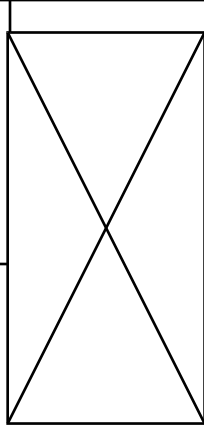
TEST SQUARE
10.1CM X 10.1CM
4"X4"

STRAP POSITION

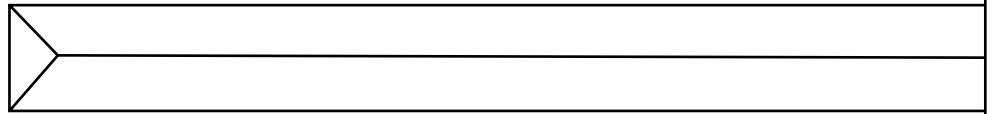
4



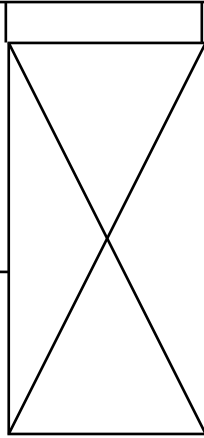
5



POCKET POSITION



6



ZIP POSITION
(ON LINING)



7

GRAINLINE



8

TOTE A
MAIN BODY
CUT 2 IN OUTER FABRIC
CUT 2 IN LINING FABRIC (FOLD ALONG DOTTED LINE)
CUT 2 IN INTERFACING (FOLD ALONG DOTTED LINE)

SEAM ALLOWANCE 1/2" / 12MM

GRAINLINE



9



ZIP POSITION
(ON LINING)



TOTE B
INSIDE POCKET
CUT 2 IN LINING
CUT 2 IN INTERFACING

SEAM ALLOWANCE 1/2" / 12MM

GRAINLINE



