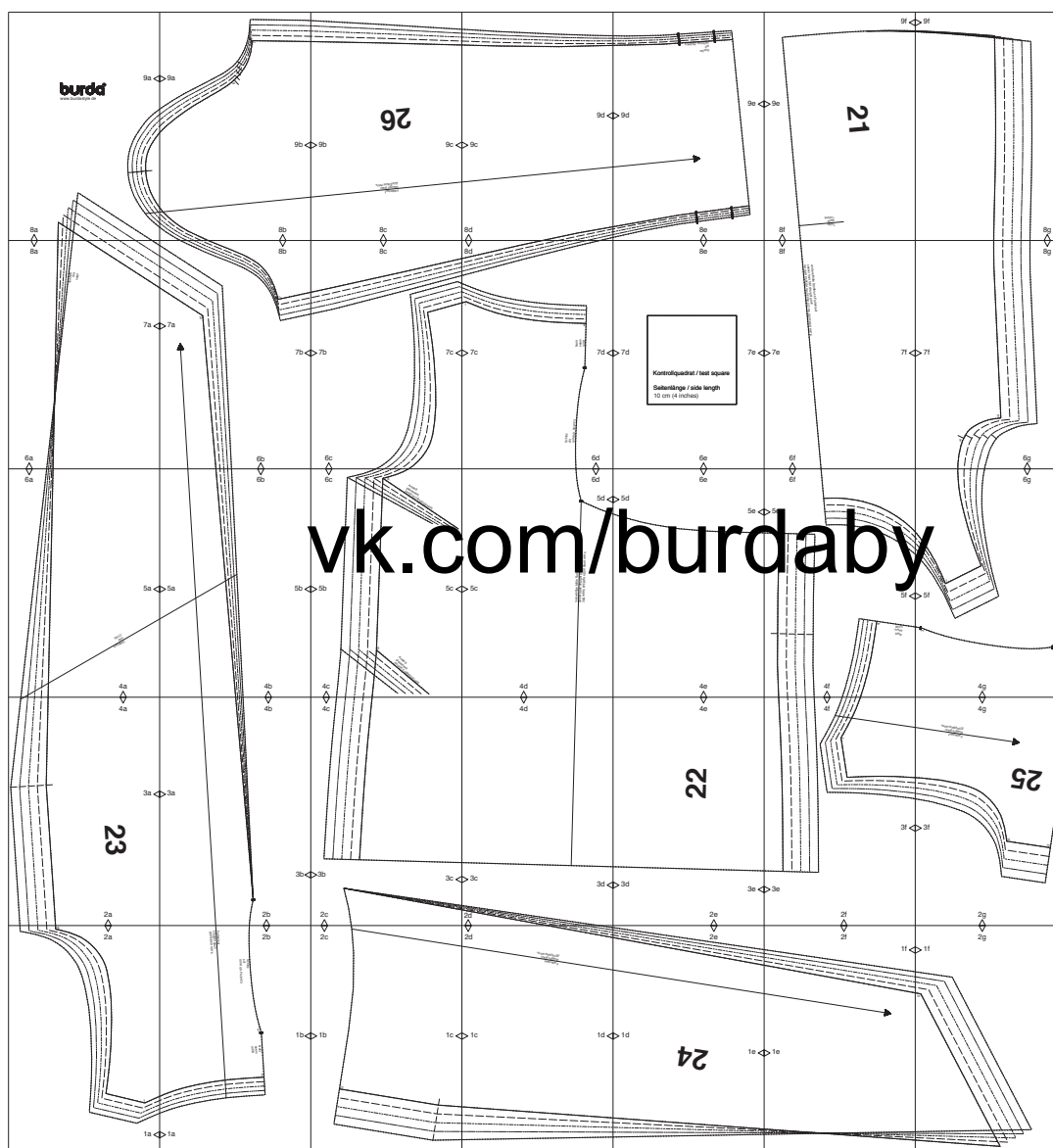
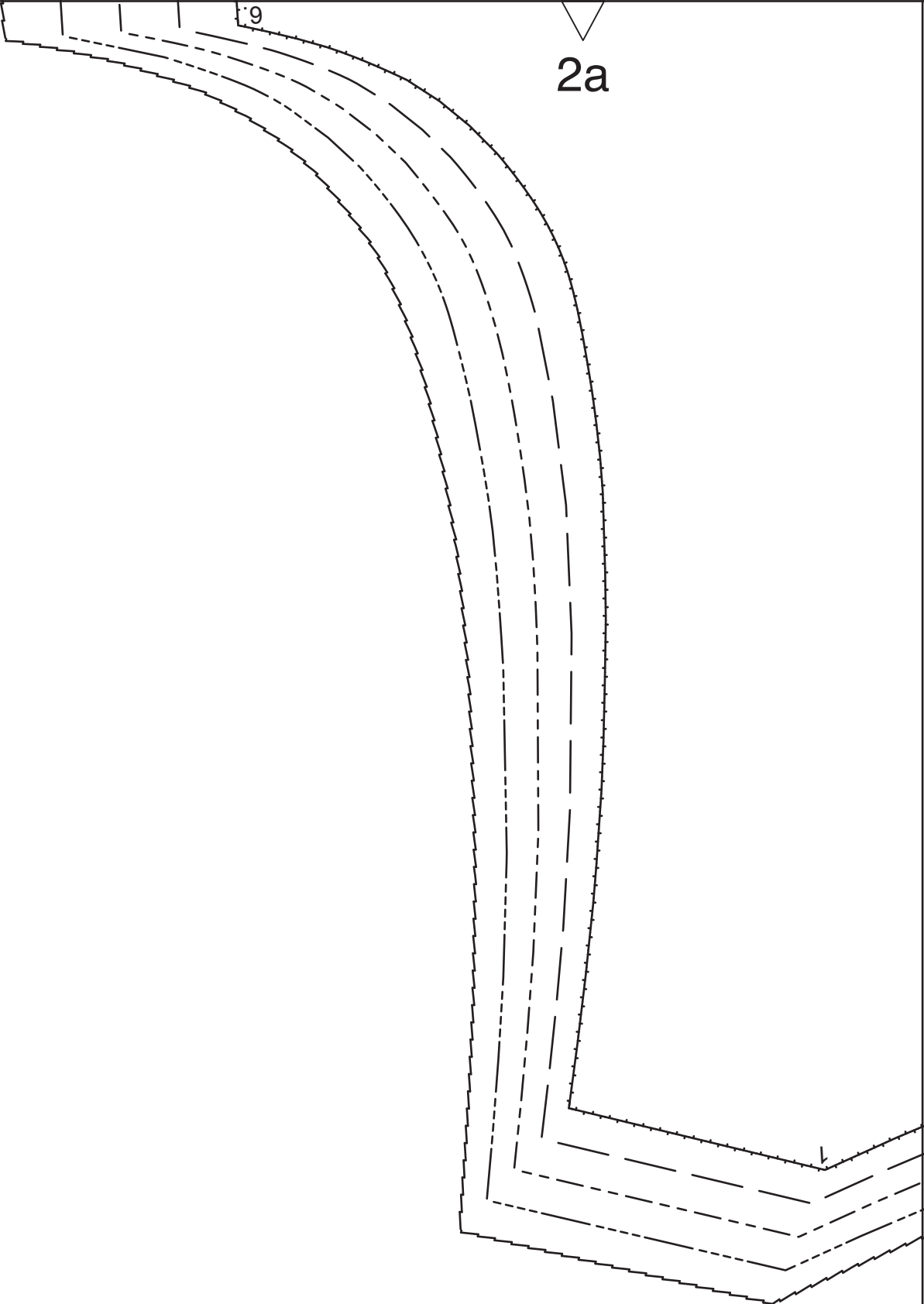


burda Download-Schnitt

Modell 106 Burda Style 01/2018



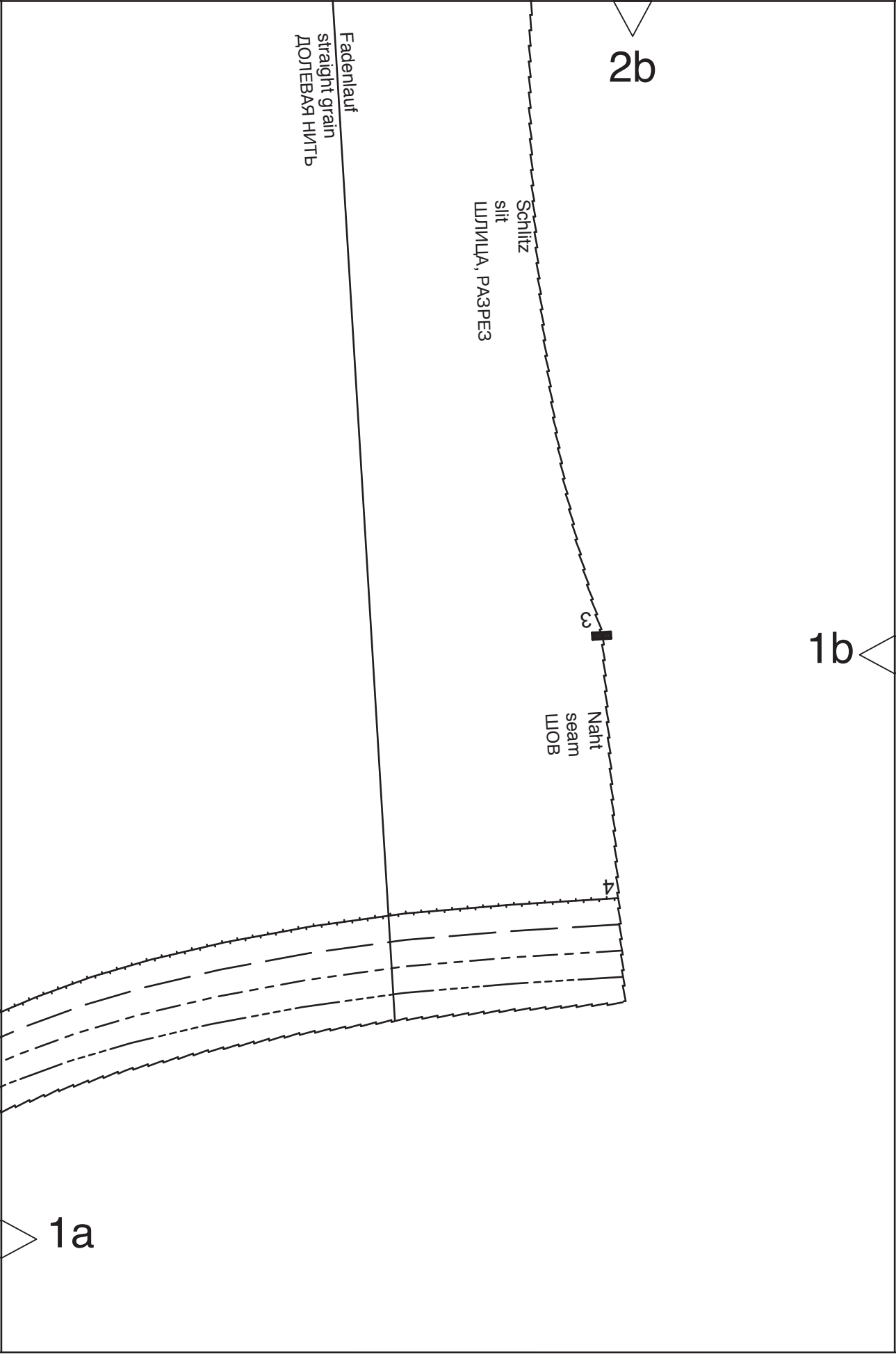
Copyright 2017 by Verlag Aenne Burda GmbH & Co. KG, Hubert-Burda Platz 2, D-77652 Offenburg
Sämtliche Modelle, Schnittteile und Zeichnungen stehen unter Urheberschutz, gewerbliches Nacharbeiten ist untersagt.
Der Verlag haftet nicht für Schäden, die durch unsachgemäße Handhabung des Schnitts, der Materialien,
unsachgemäße Ausführung der Tipps und Anleitungen oder unsachgemäße Nutzung der Modelle entstehen.



9

2a

1a



2b

Fadenlauf
straight grain
ДОЛГЕБАЯ НИТЬ

Schlitz
slit
ШЛИЦА, РАЗРЕЗ

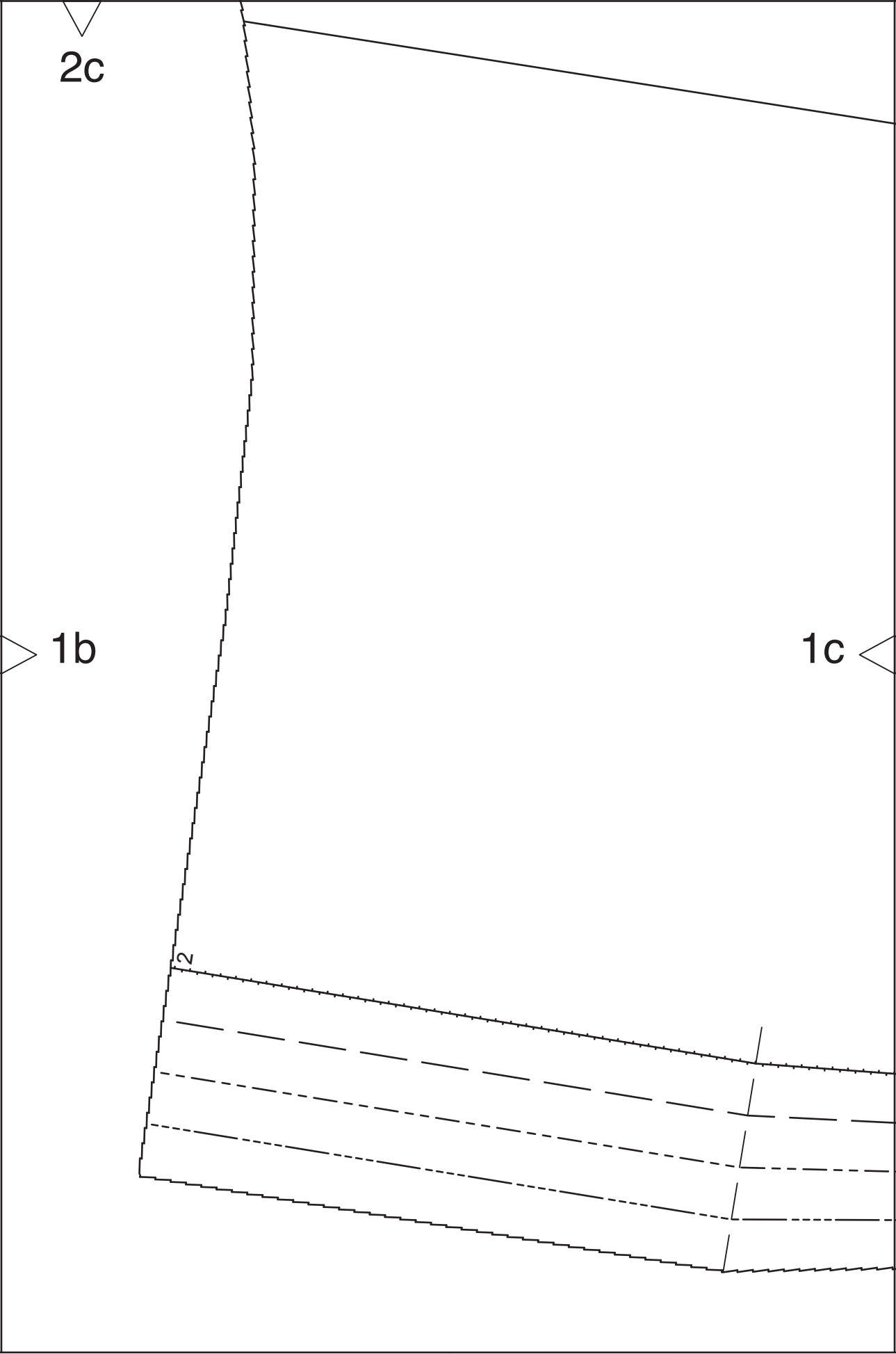
Naht
seam
ШОБ

3

4

1a

1b

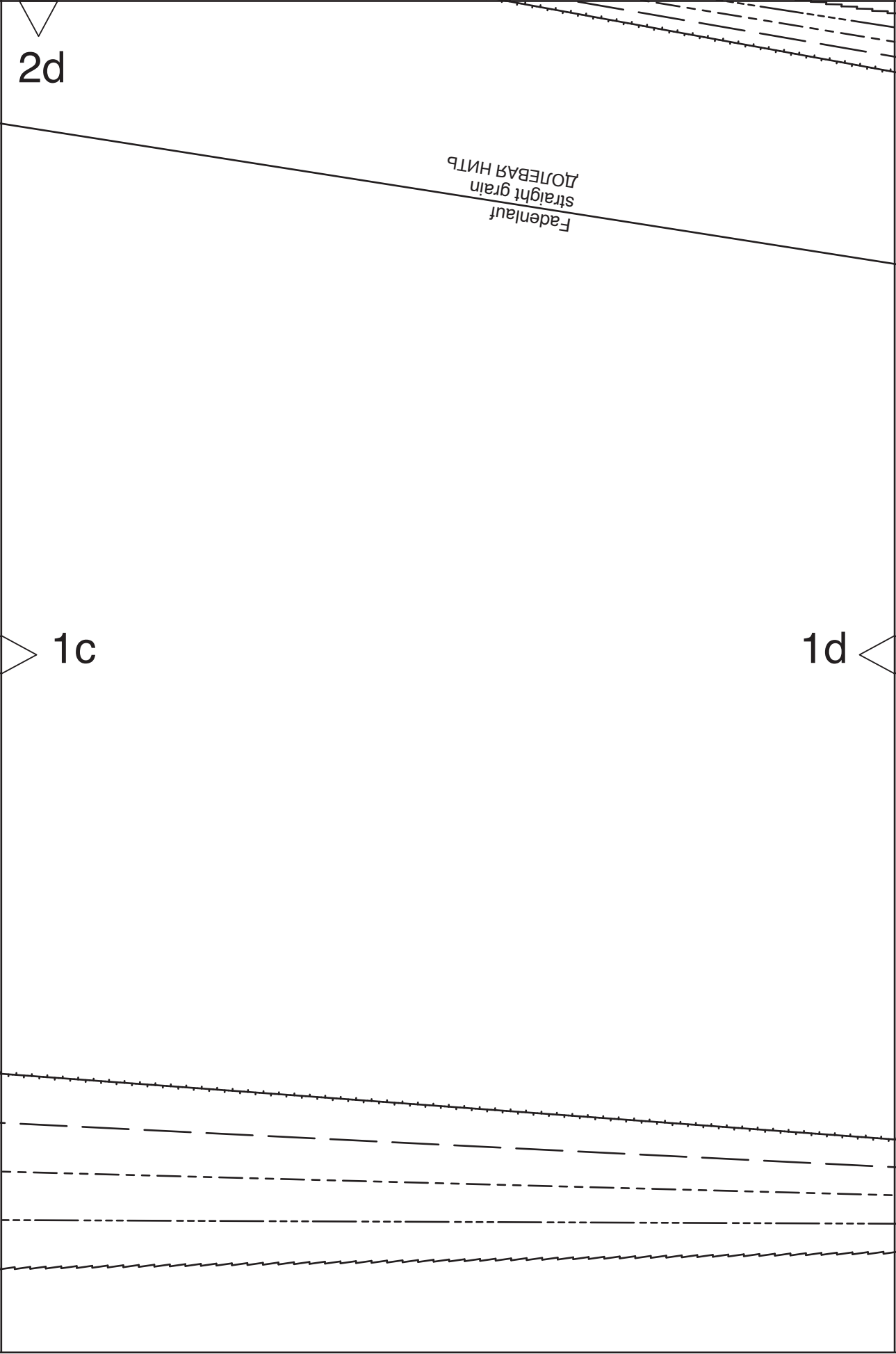


2d

Фаденлауф
straight grain
ДОЛБАВА НИТЪ

1c

1d



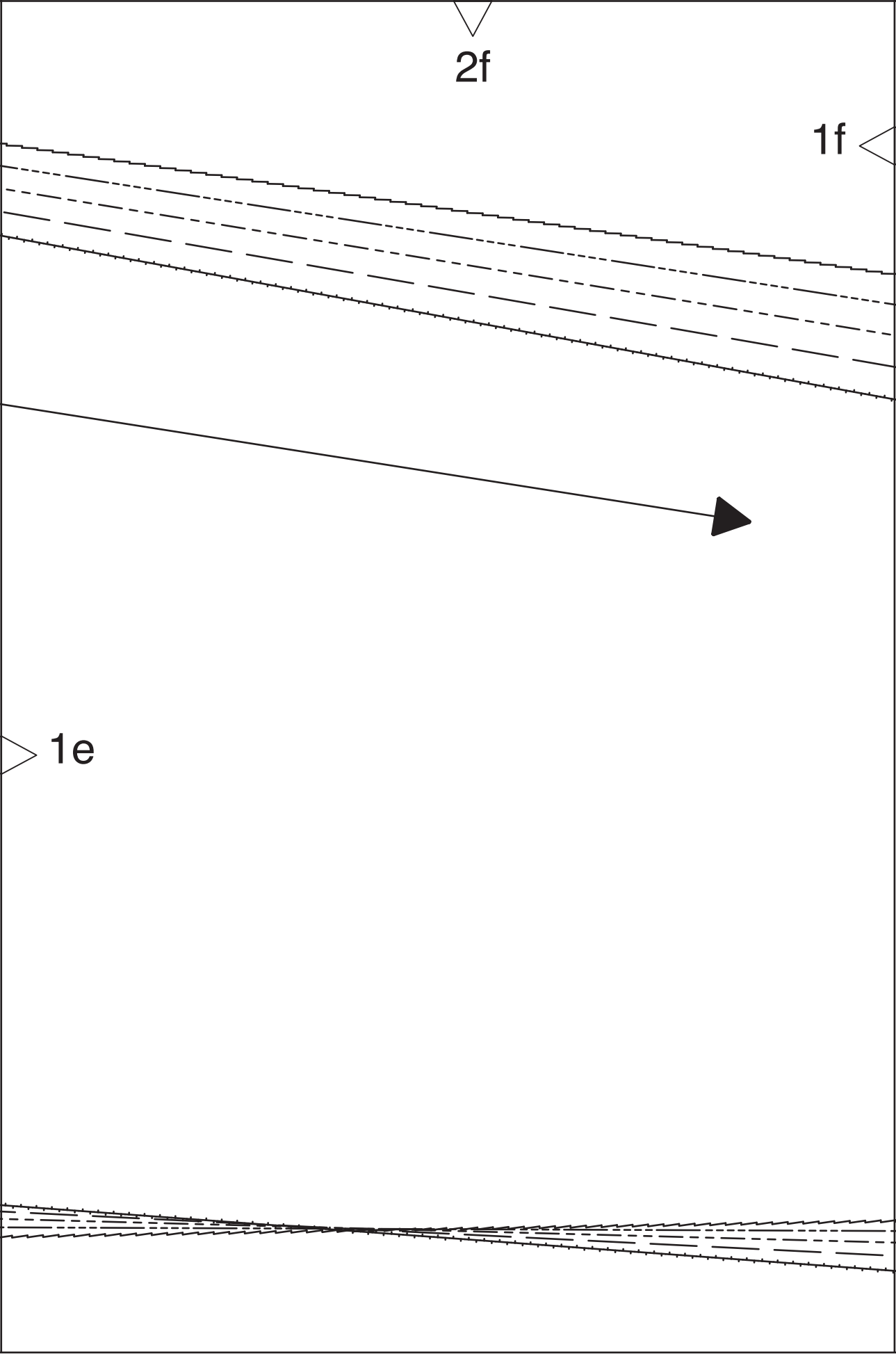
2e

The diagram shows a rectangular plate with a central circular hole. The top and bottom edges are curved, tapering towards the center. The left and right edges are straight. The top edge is labeled '2e' with a downward-pointing arrow. The left edge is labeled '1d' with a rightward-pointing arrow. The right edge is labeled '1e' with a leftward-pointing arrow. The central hole is labeled '24'. The drawing uses solid lines for the outer boundary, dashed lines for the inner boundary, and a dotted line for the central hole boundary.

1d

24

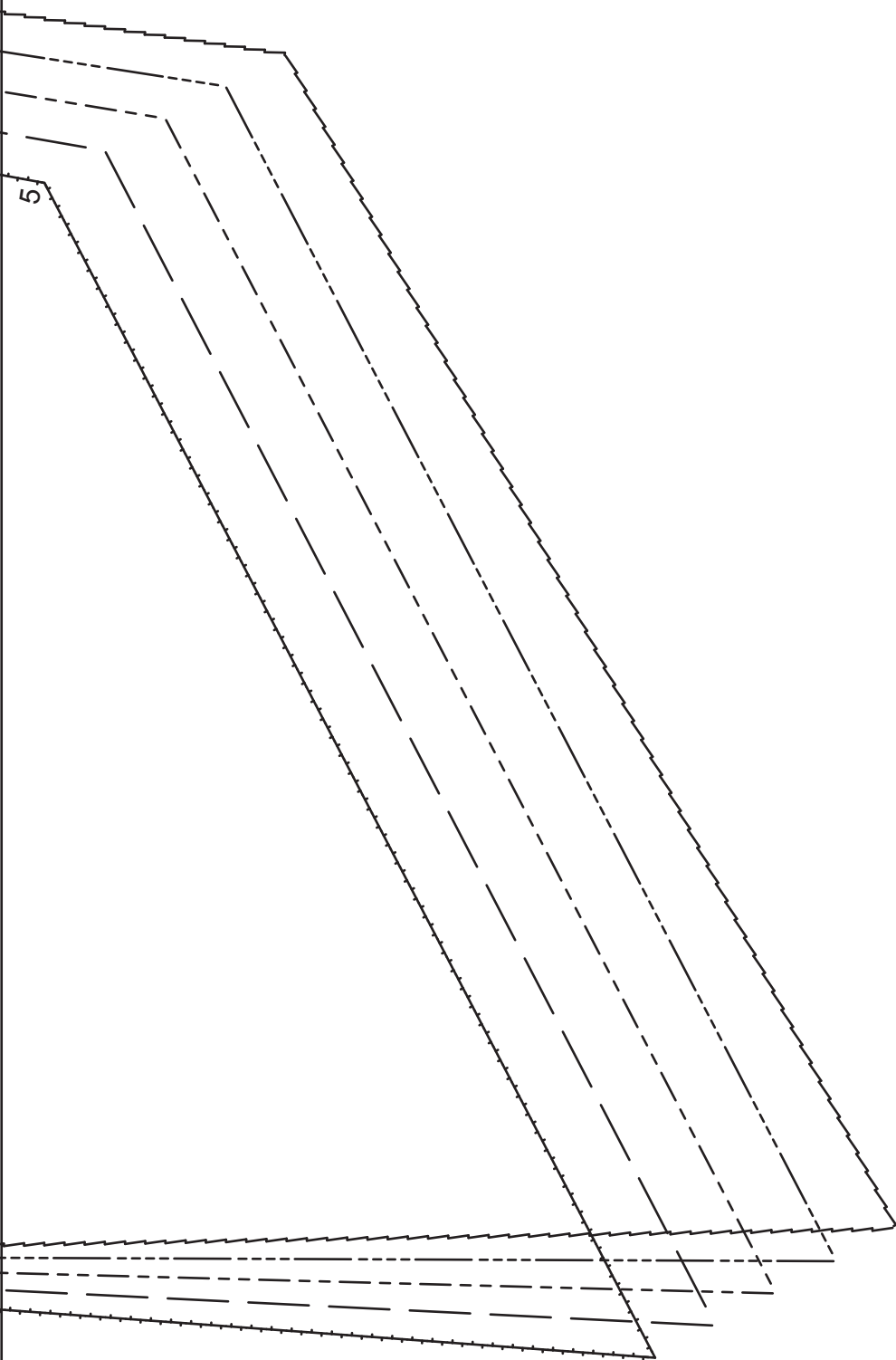
1e



2g

1f

5

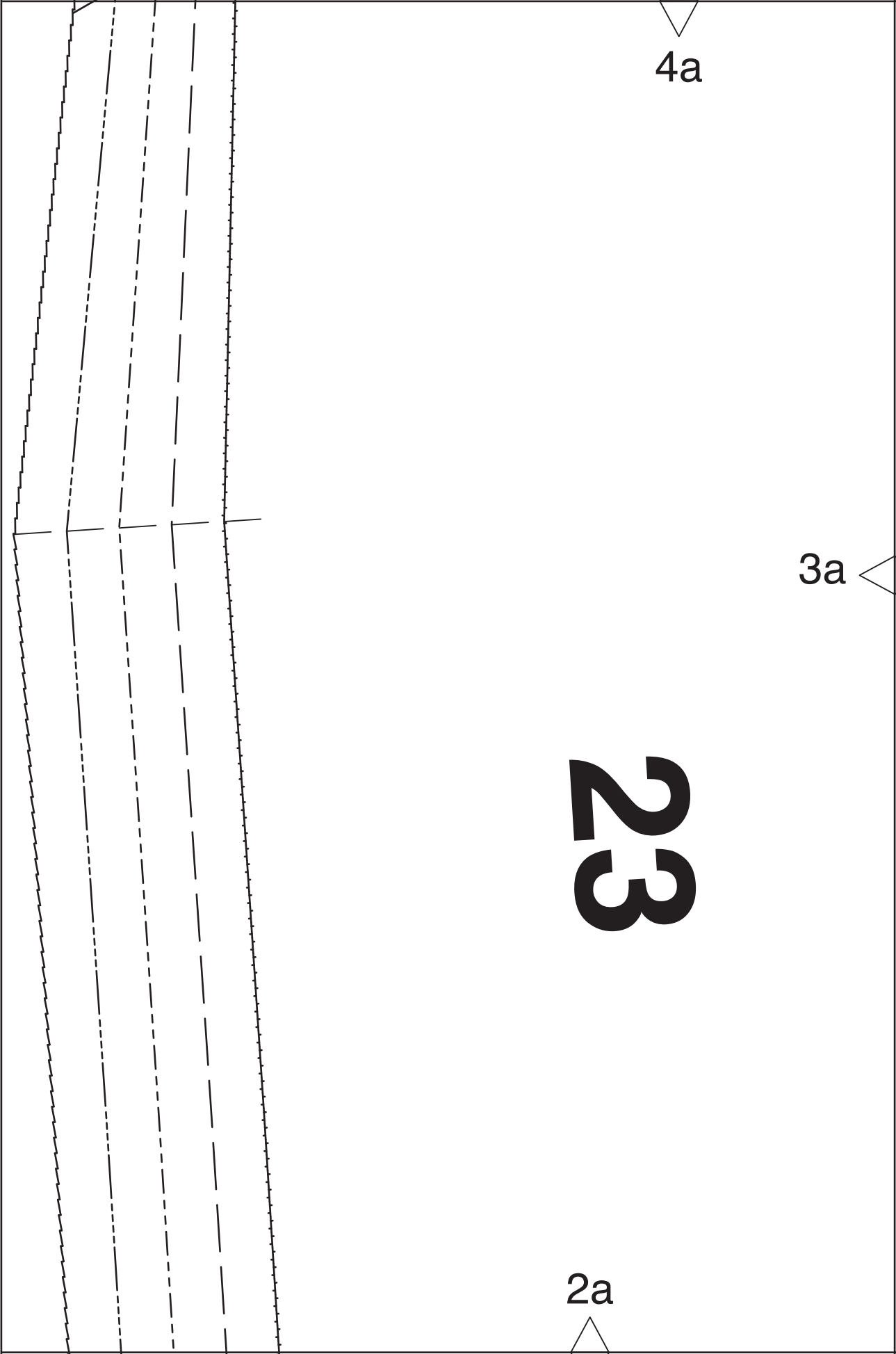


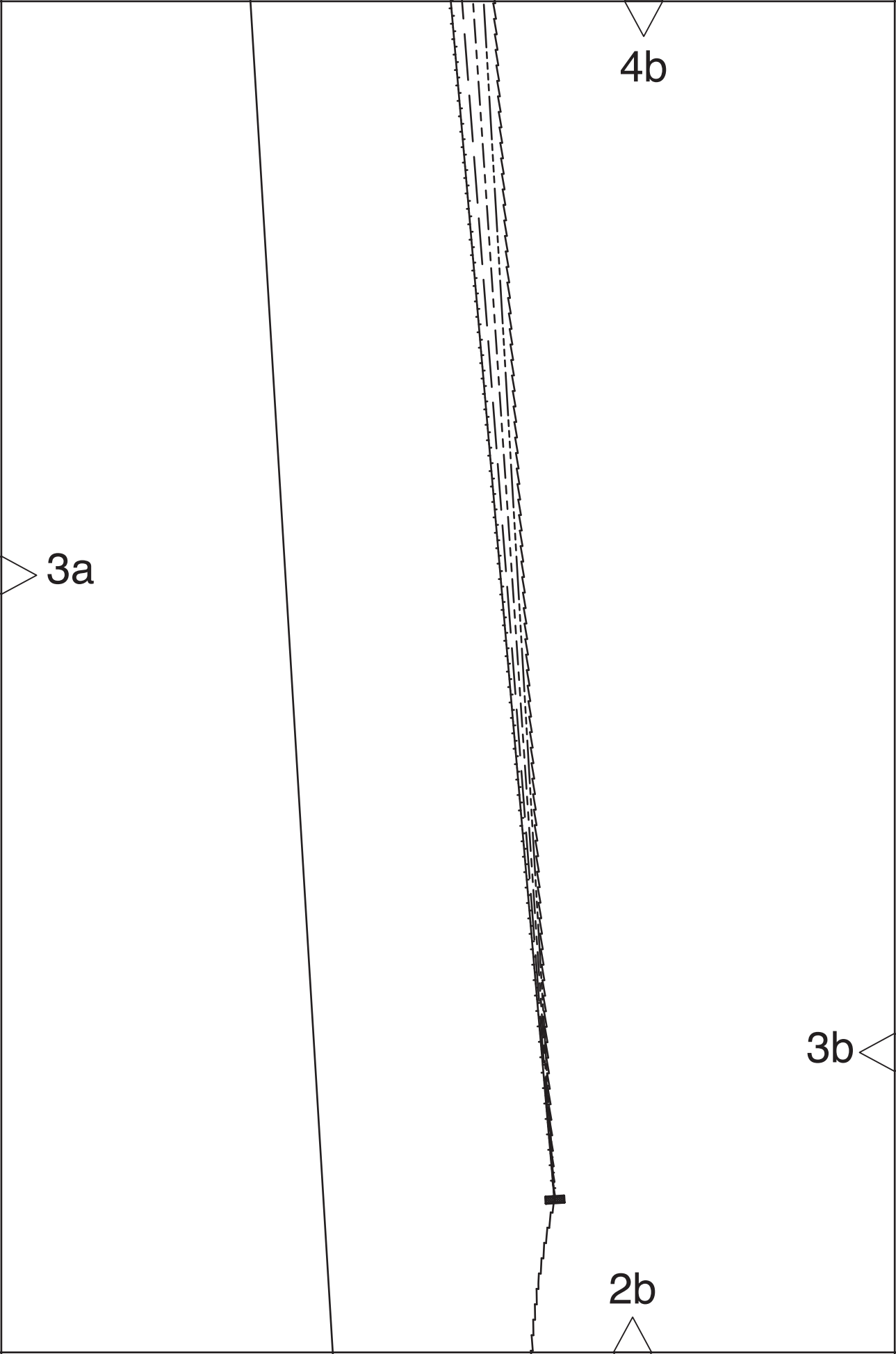
4a

3a

23

2a



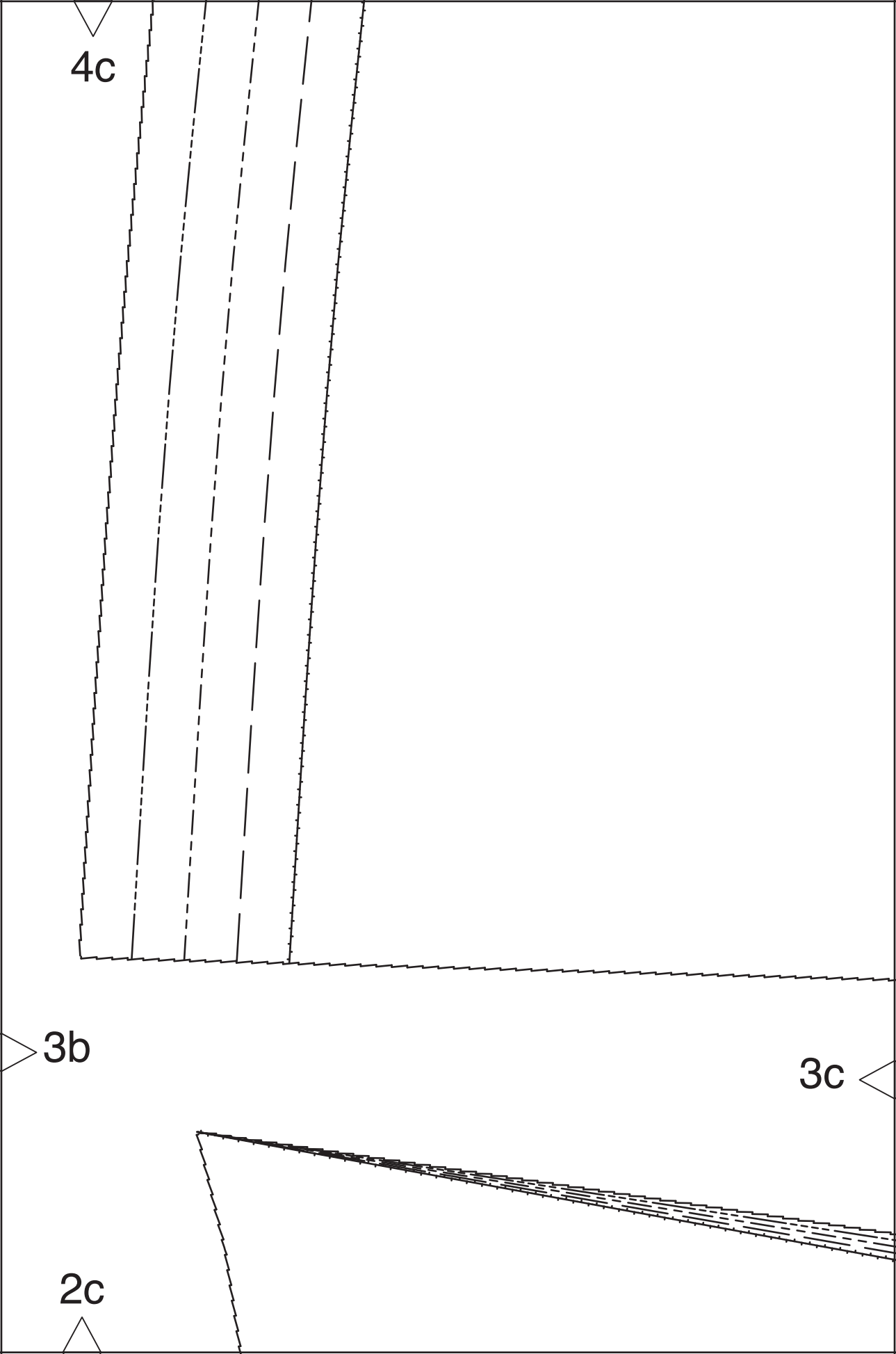


4c

3b

3c

2c





A diagram showing a large rectangular area divided into two main sections. The top section is bounded by a solid line and a dashed line. The bottom section contains several lines, including a solid line, a dashed line, and a dotted line, all sloping downwards from left to right. Labels with arrows point to various features: '4d' at the top center, '3c' on the left side, '3d' on the right side, and '2d' at the bottom left corner.

4d

3c

3d

2d

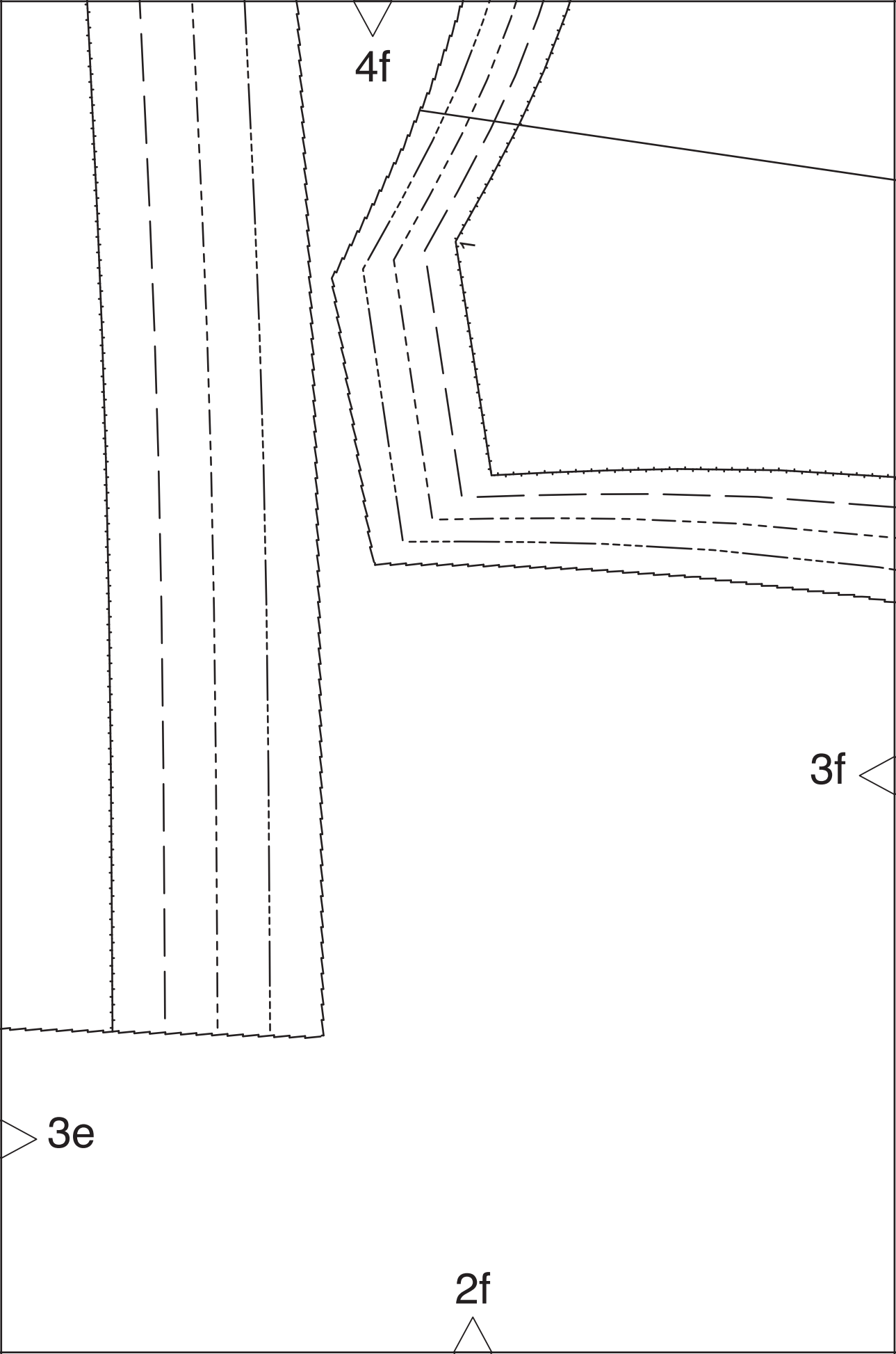
4e

22

3d

3e

2e



4g

Фаденлаут
straight grain
ДОЛБЕВАЯ НИТЬ

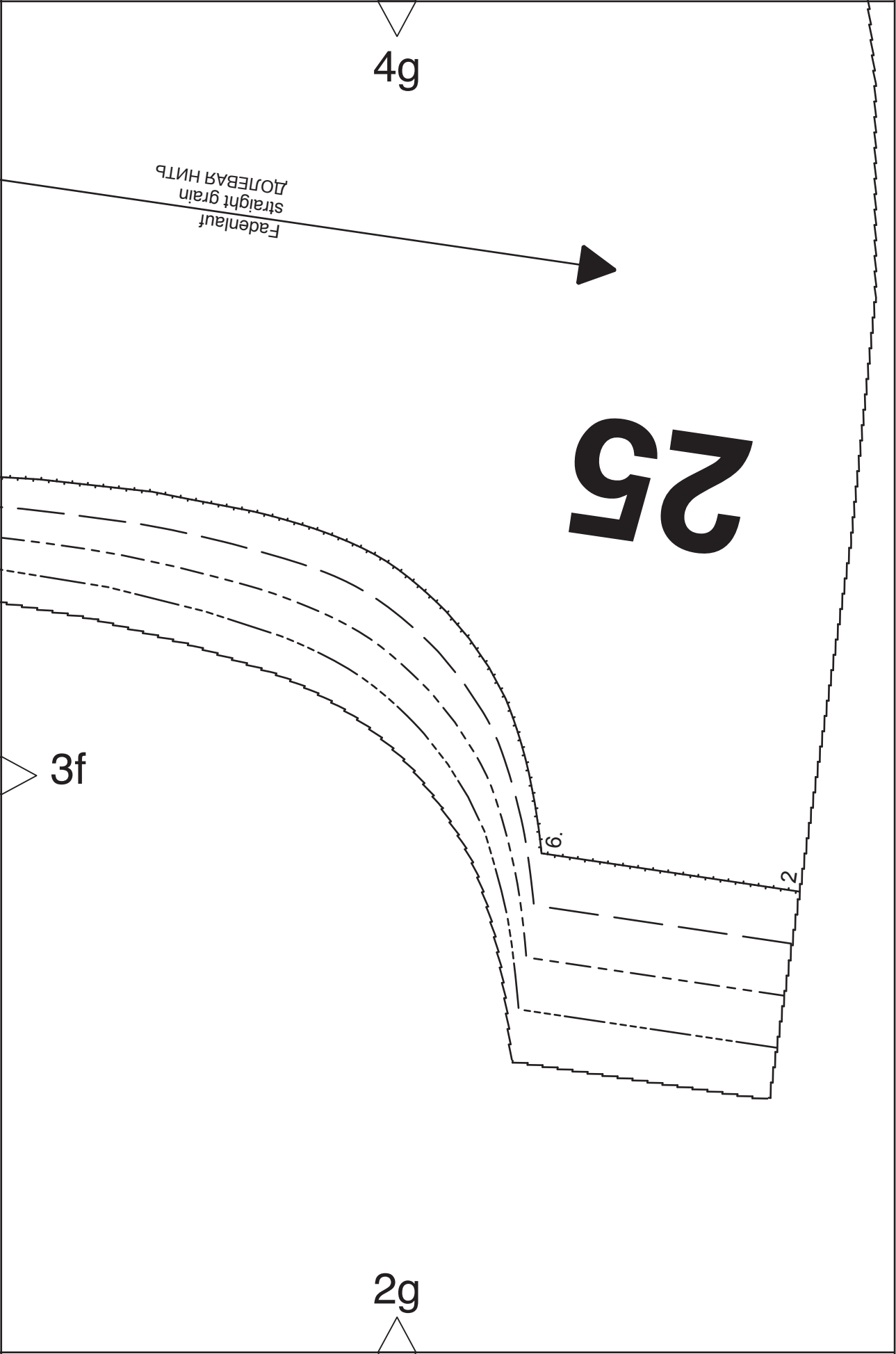
25

3f

6

2

2g

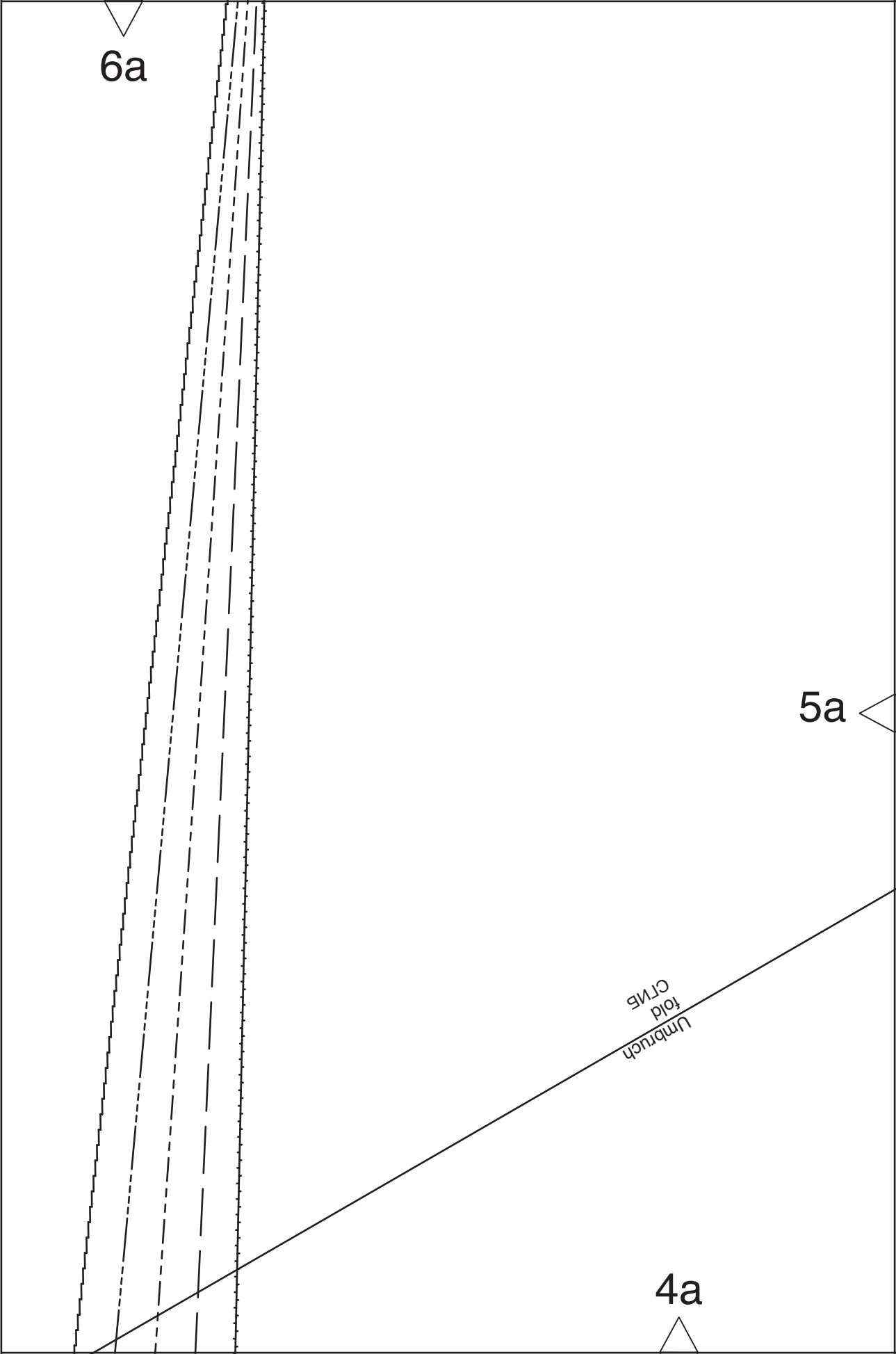


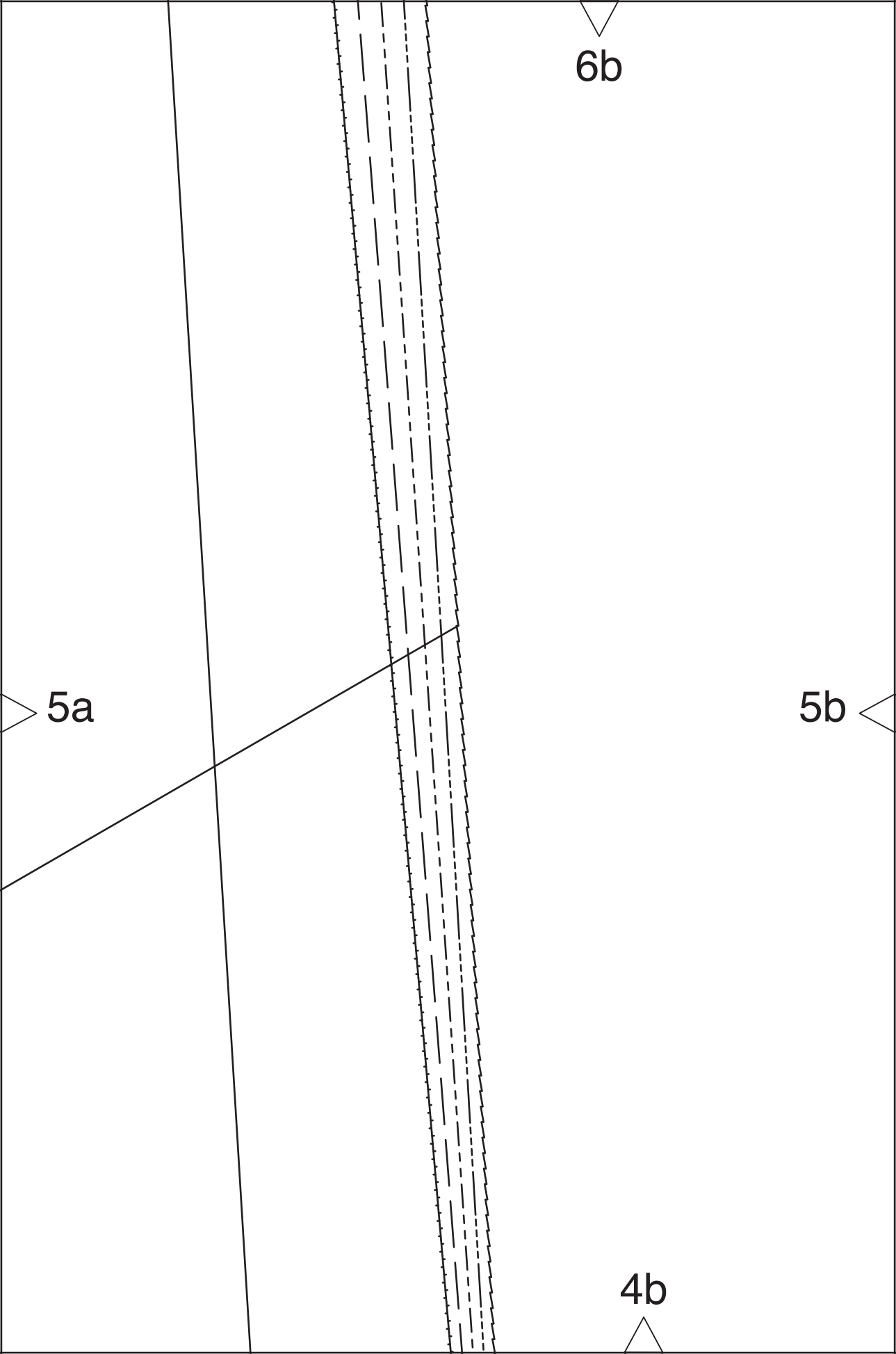
6a

5a

Umbruch
fold
CTMB

4a





6c

6.

AnstoB
placement
ЛИНИЯ СОВМЕЩЕНИЯ

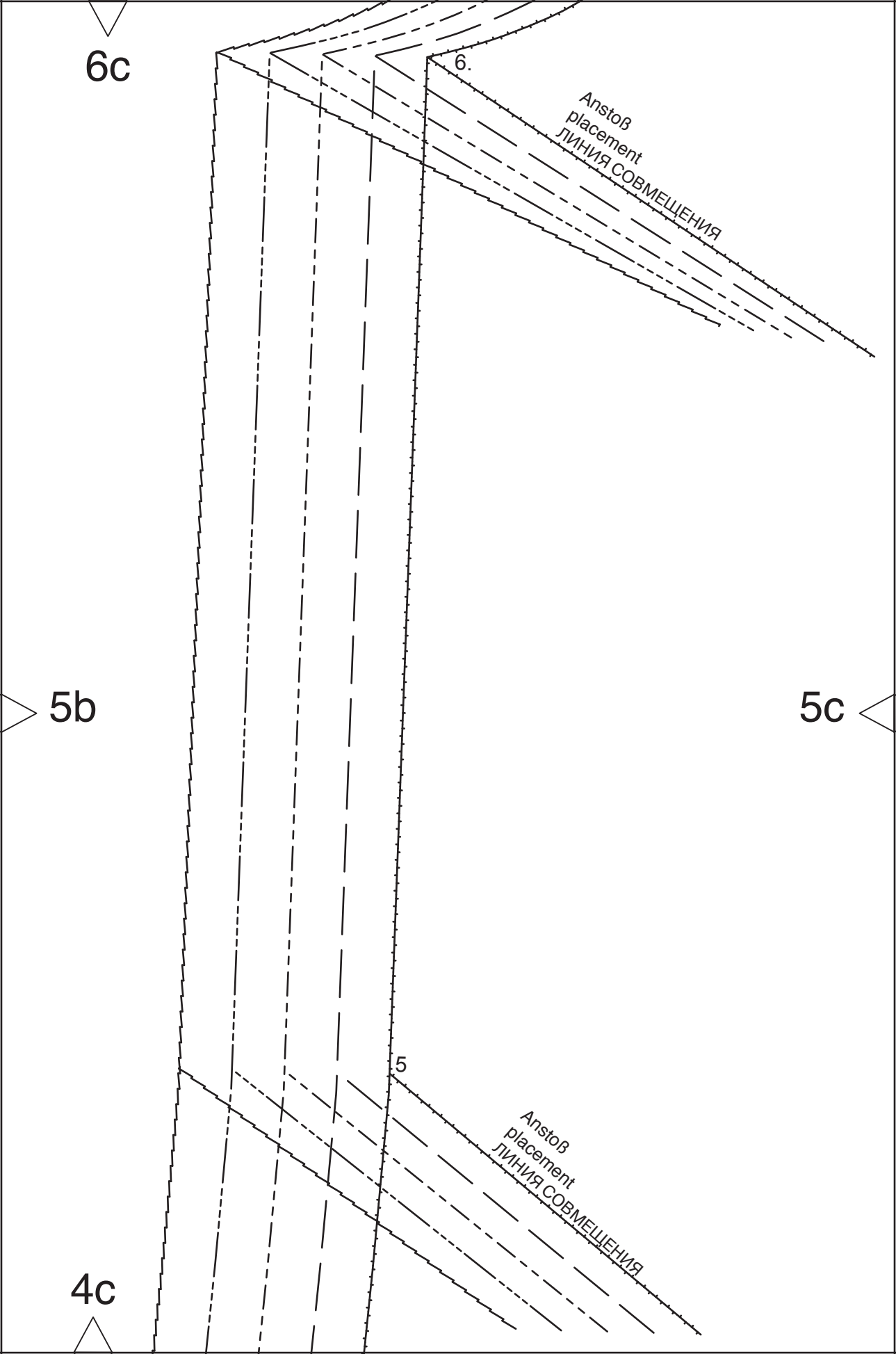
5b

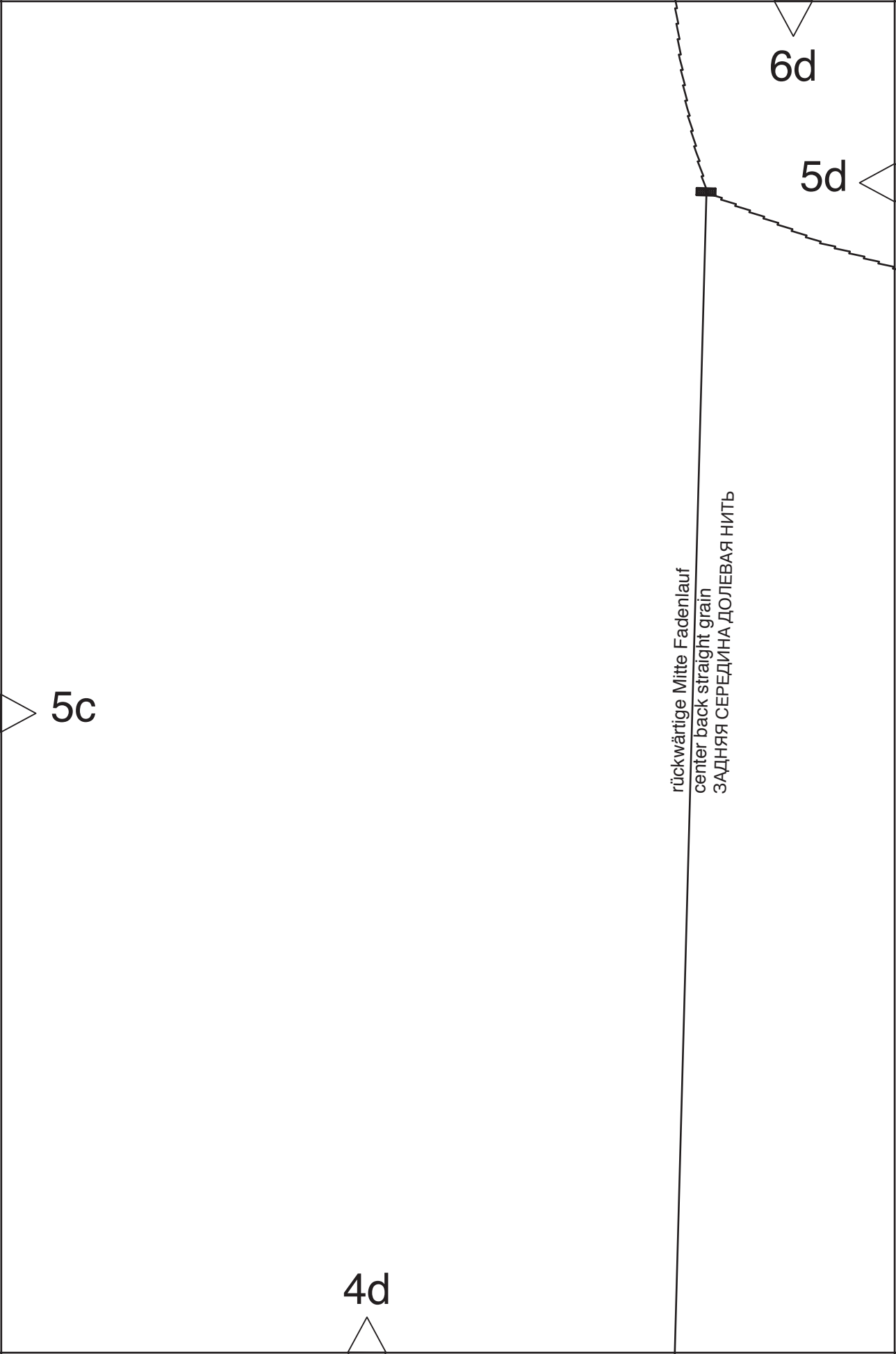
5c

5

AnstoB
placement
ЛИНИЯ СОВМЕЩЕНИЯ

4c





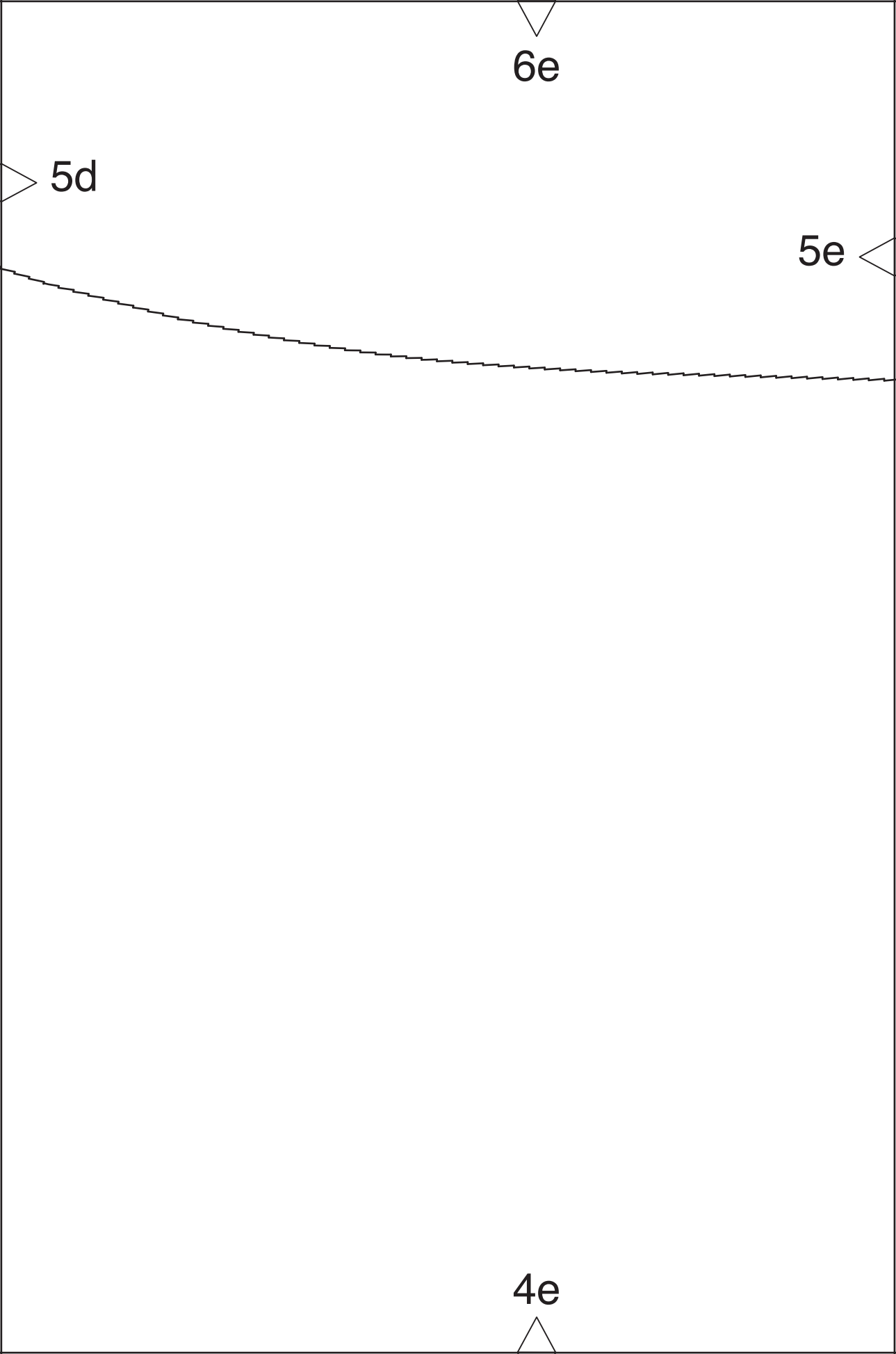
5c

4d

6d

5d

rückwärtige Mitte Fadenlauf
center back straight grain
ЗАДНЯЯ СЕРЕДИНА ДОЛЕВАЯ НИТЬ



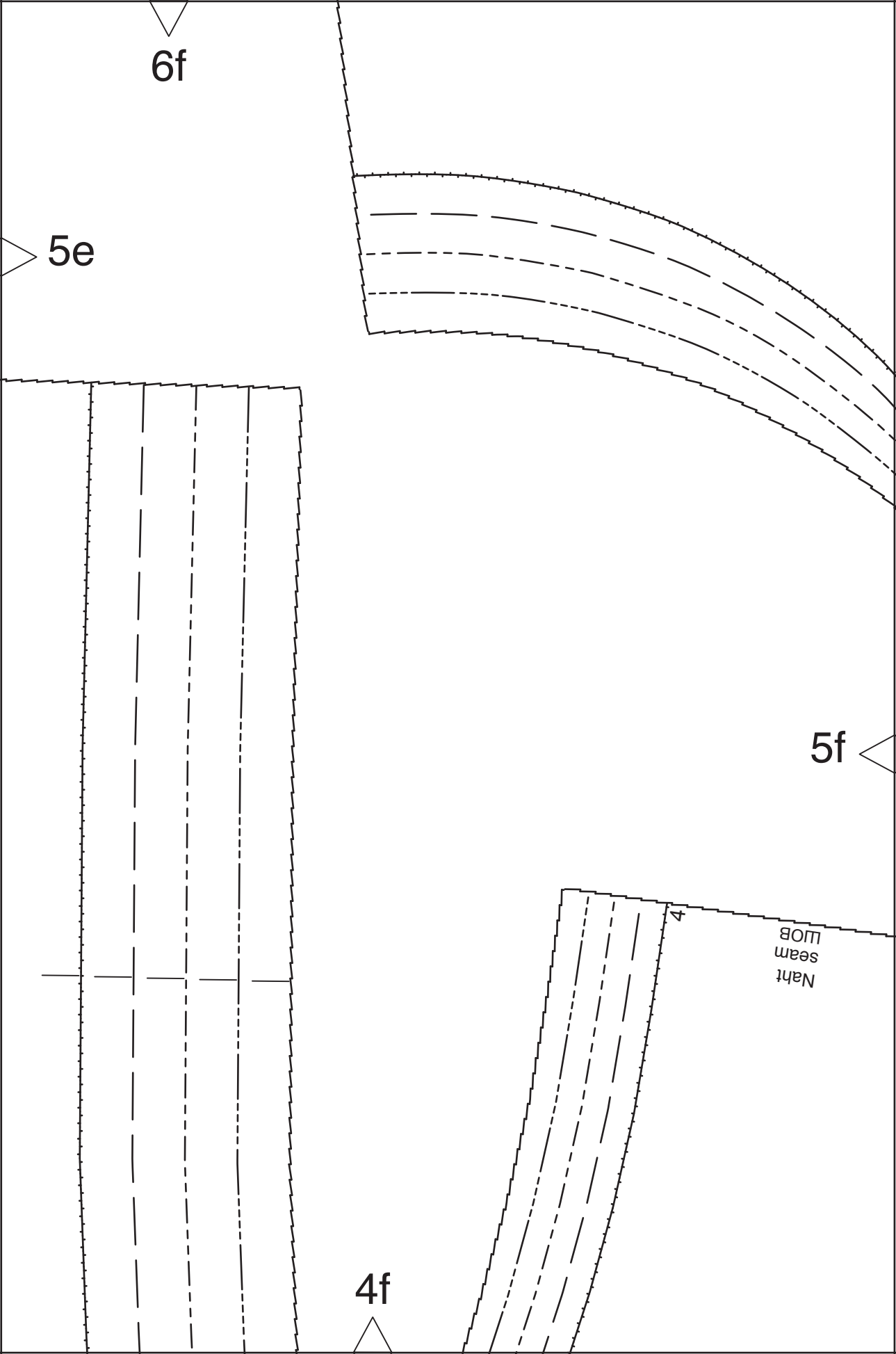
6f

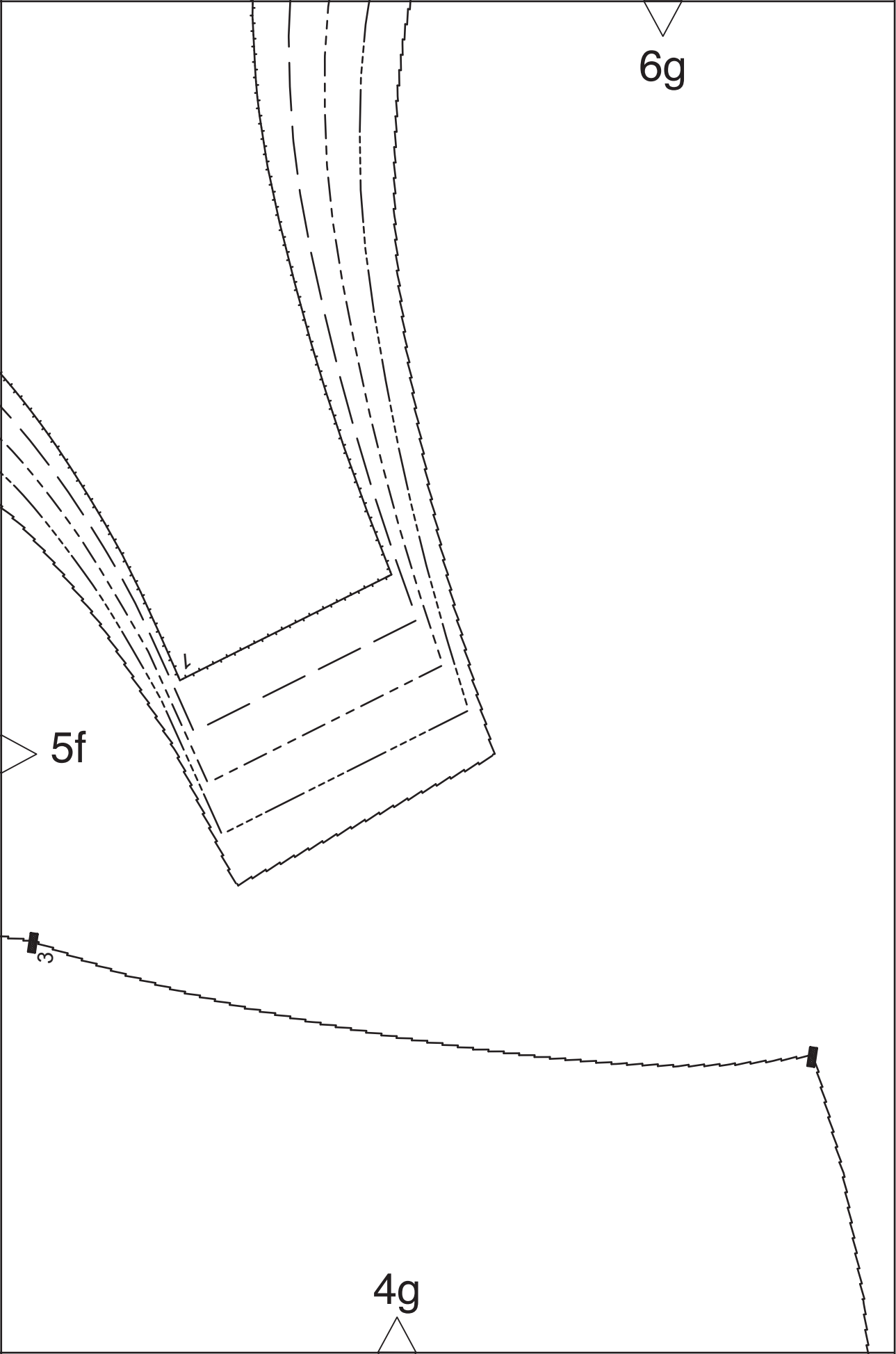
5e

5f

4f

Naht
seam
шов



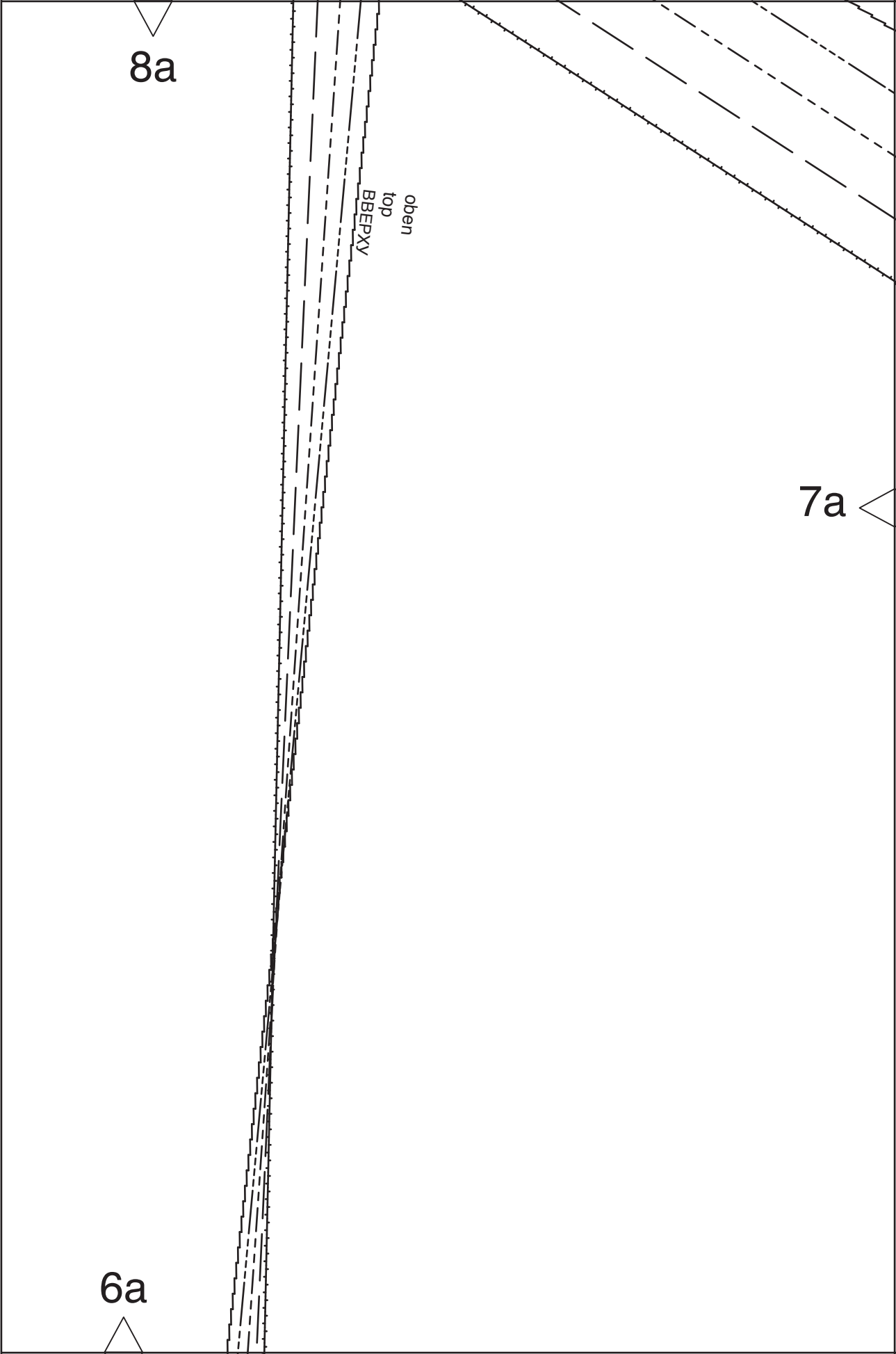


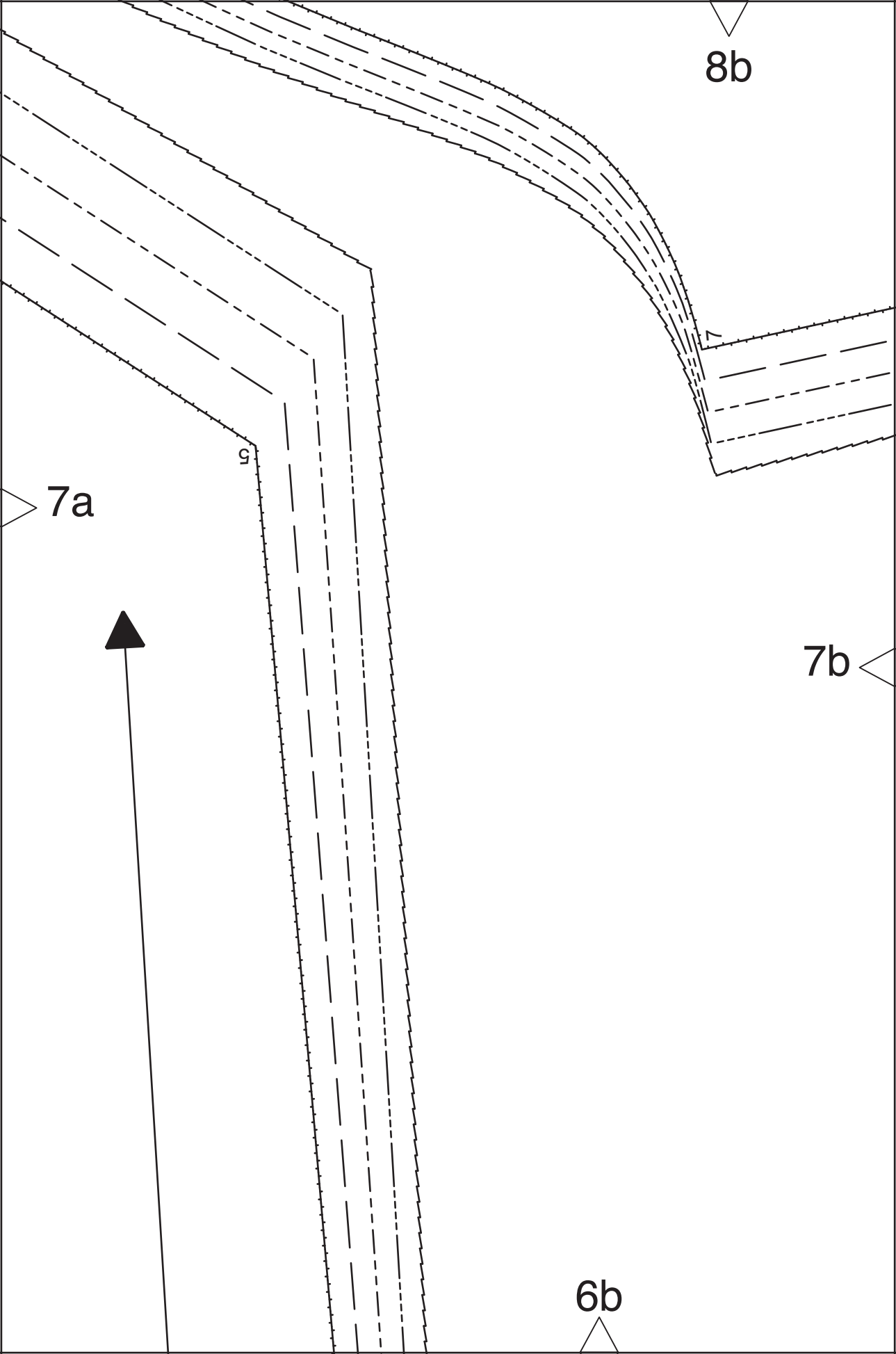
8a

oben
top
BBPXV

7a

6a



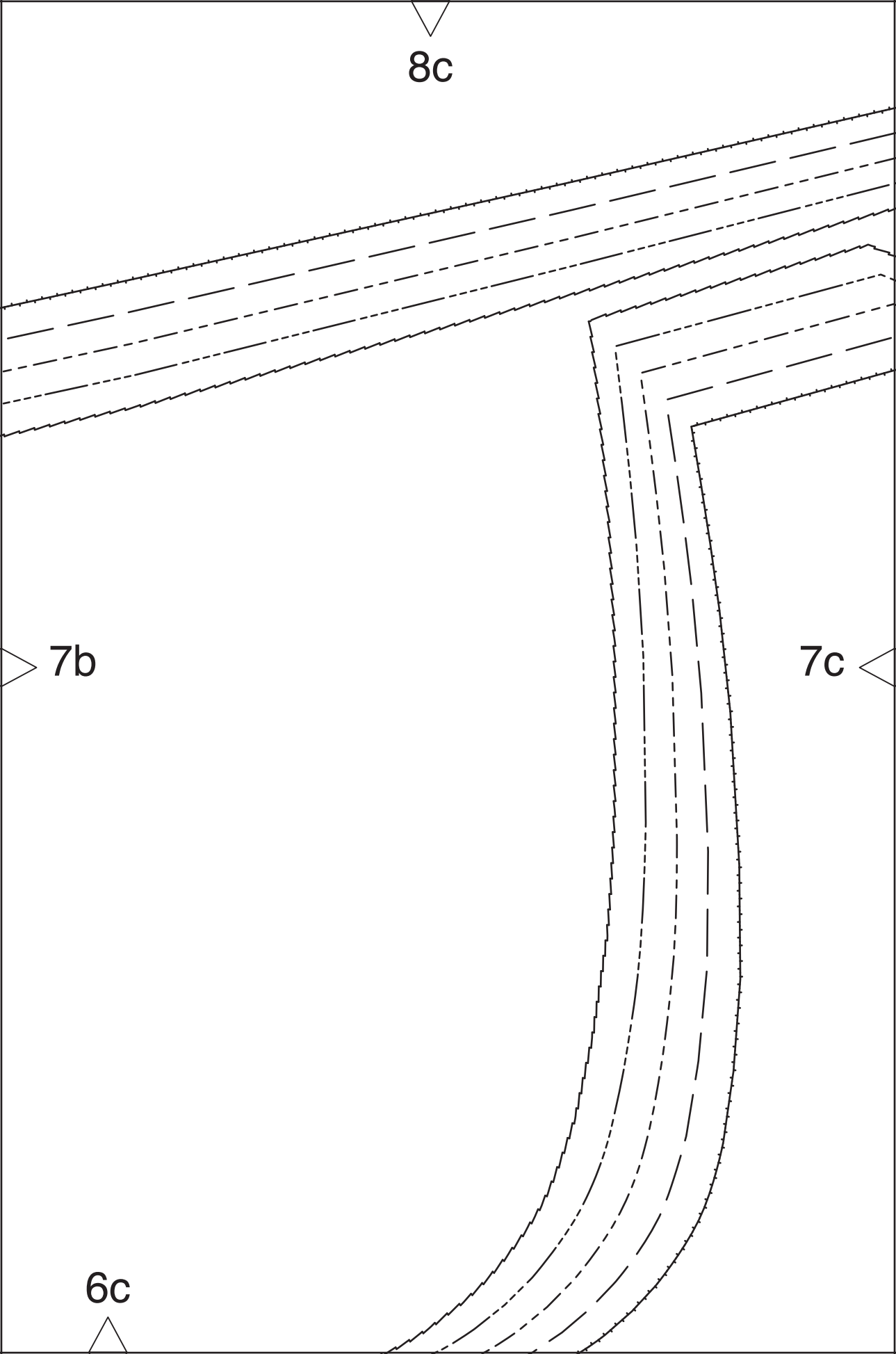


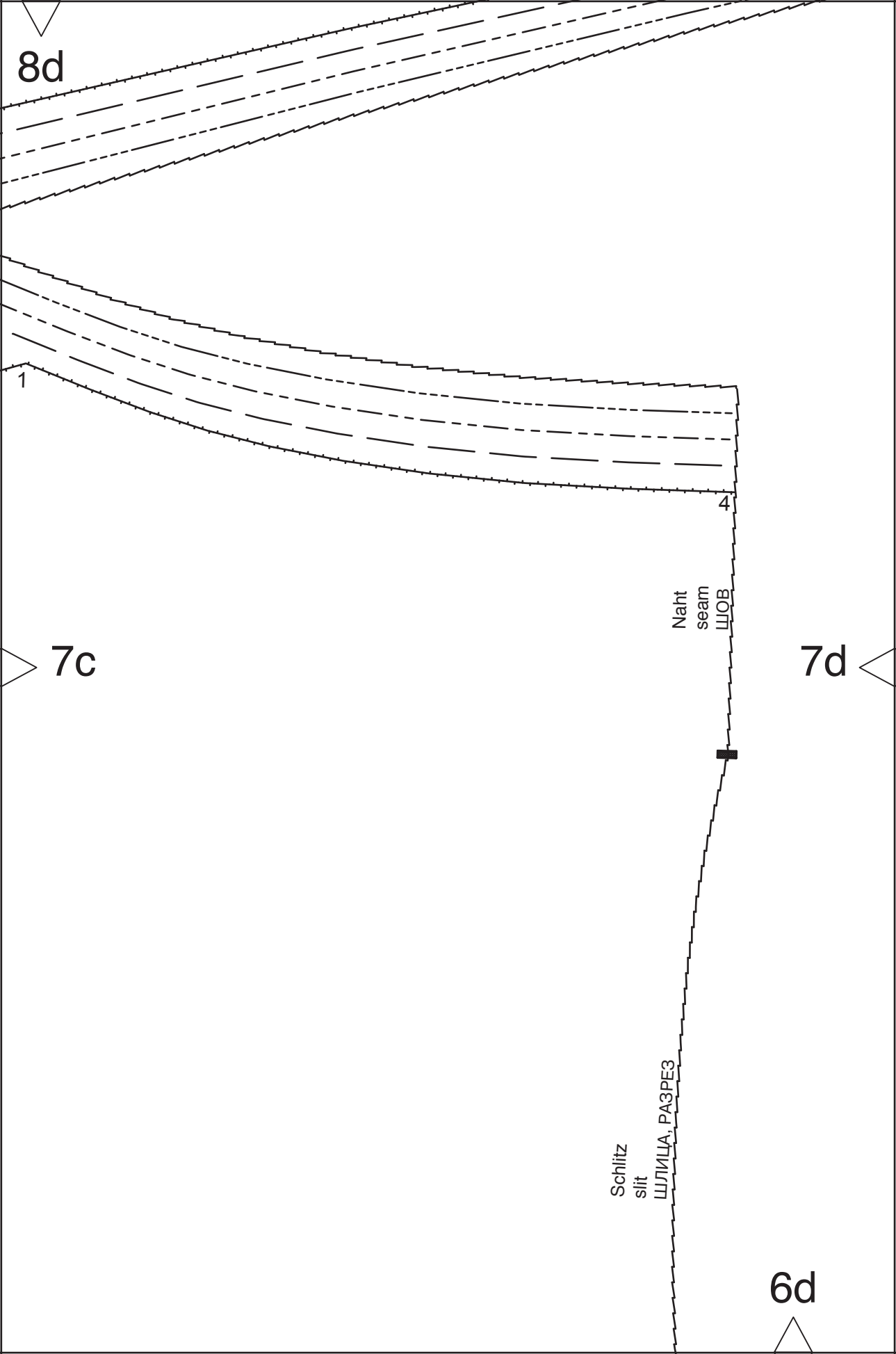
8c

7b

7c

6c





8e

7d

7e

Kontrollquadrat / test square

Seitenlänge / side length

10 cm (4 inches)

6e

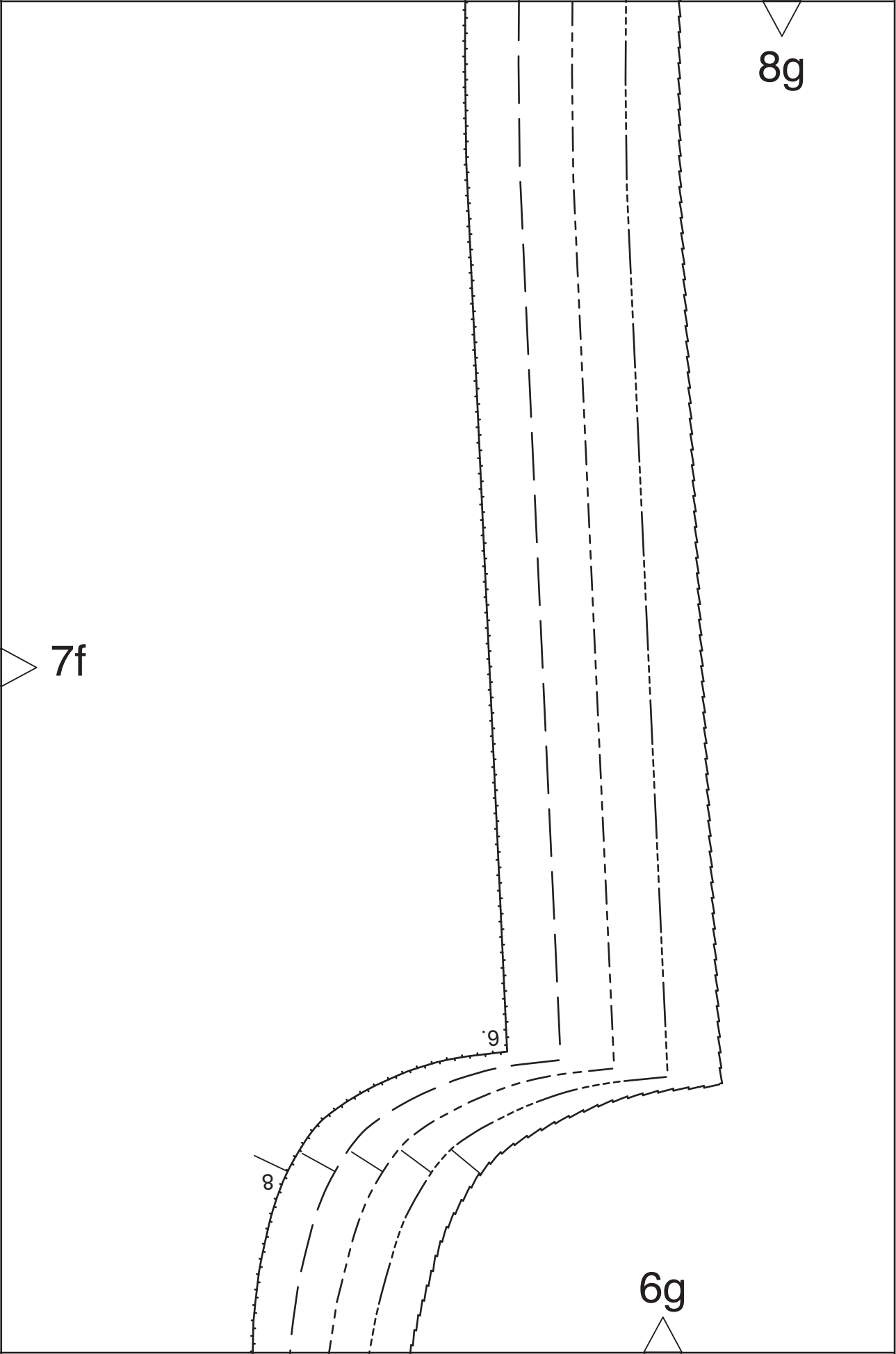
8f

vordere Mitte Stoffbruch Fadenlauf
center front fold straight grain
ЛИНИЯ СЕРЕДИНЫ ПЕРЕДА СТИБ ДОЛЕВАЯ НИТЬ

7e

7f

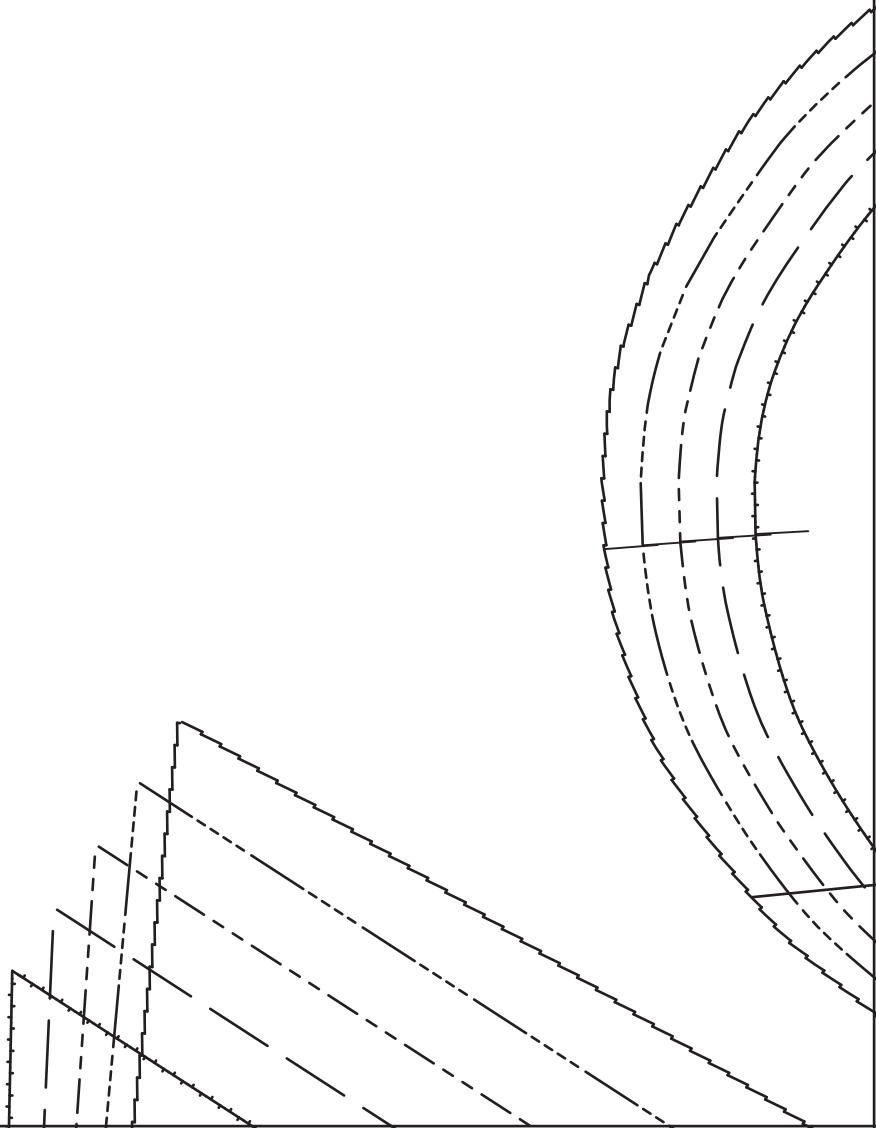
6f

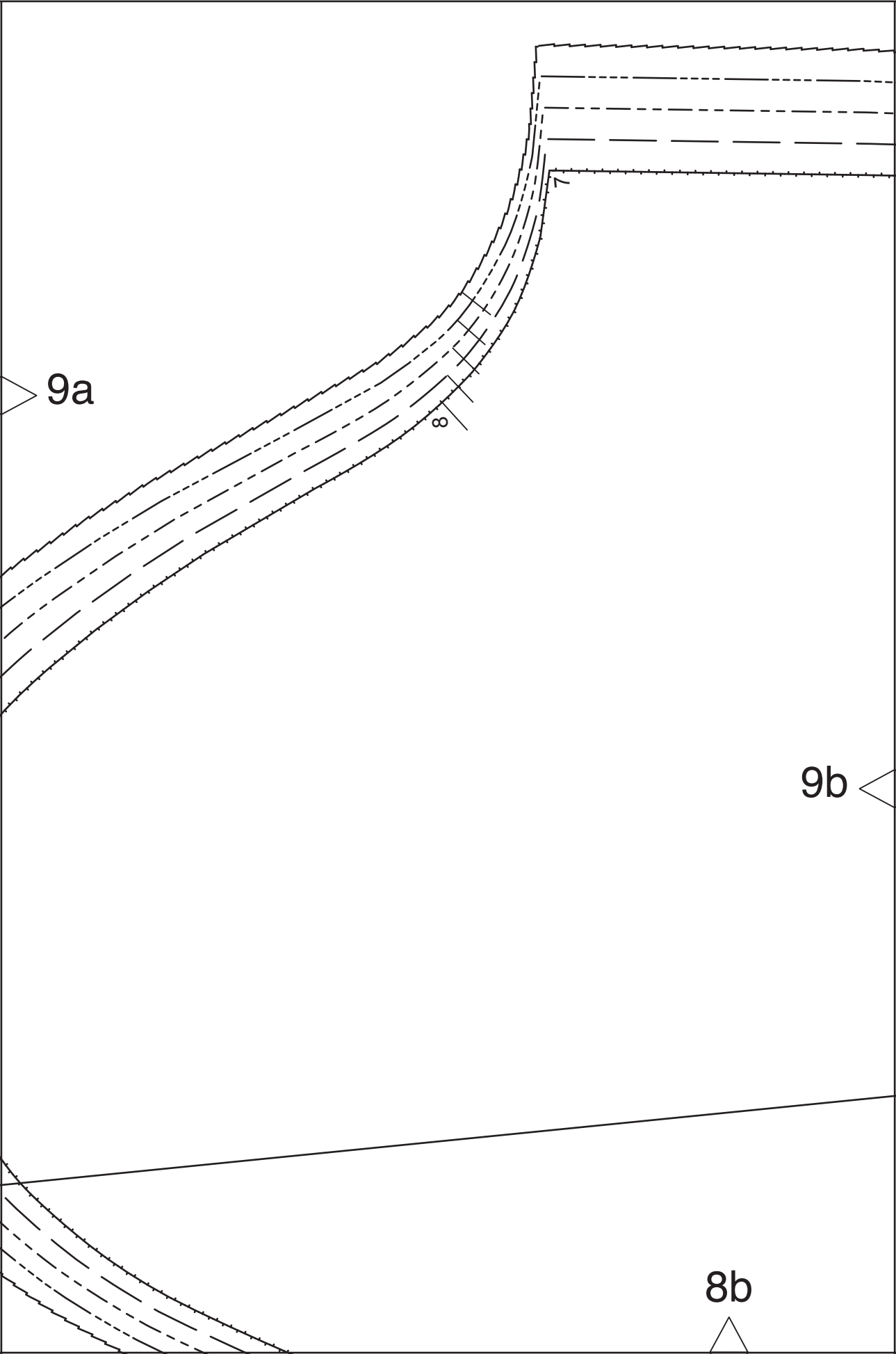


burda[®]
www.burdastyle.de

9a

8a





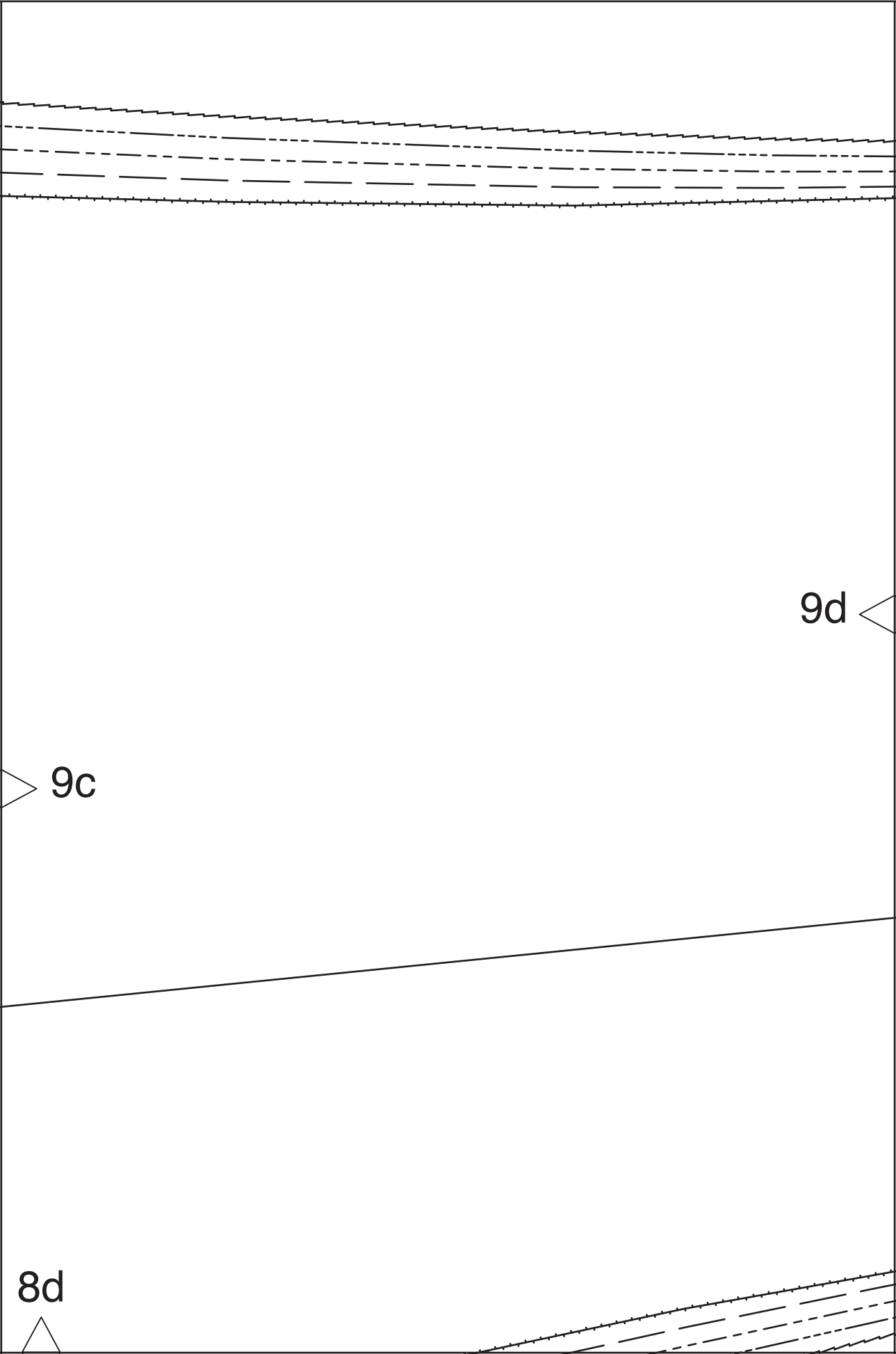
26

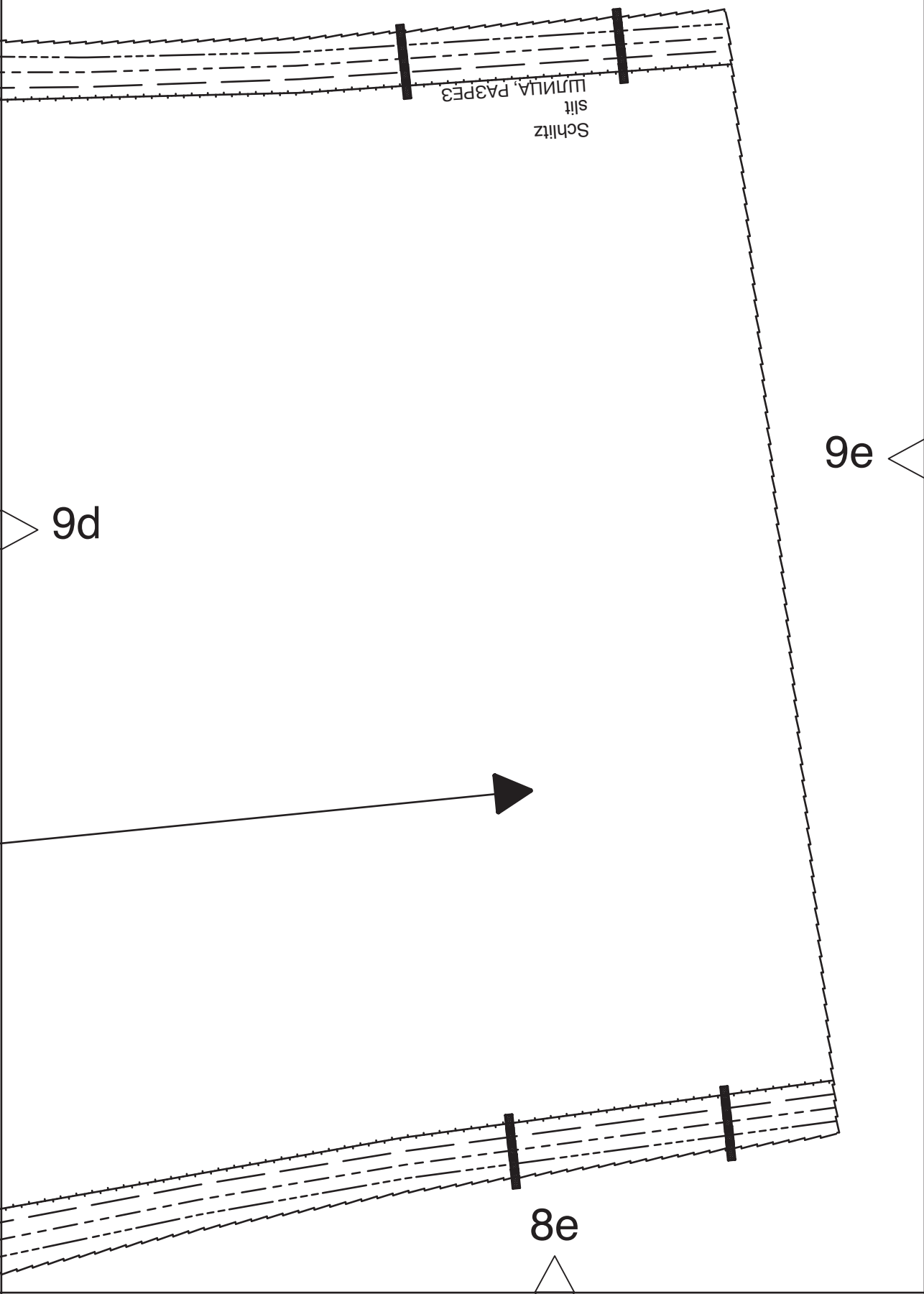
9b

9c

Fadenlauf
straight grain
ДОЛГЕБАЯ НИТЬ

8c





9f

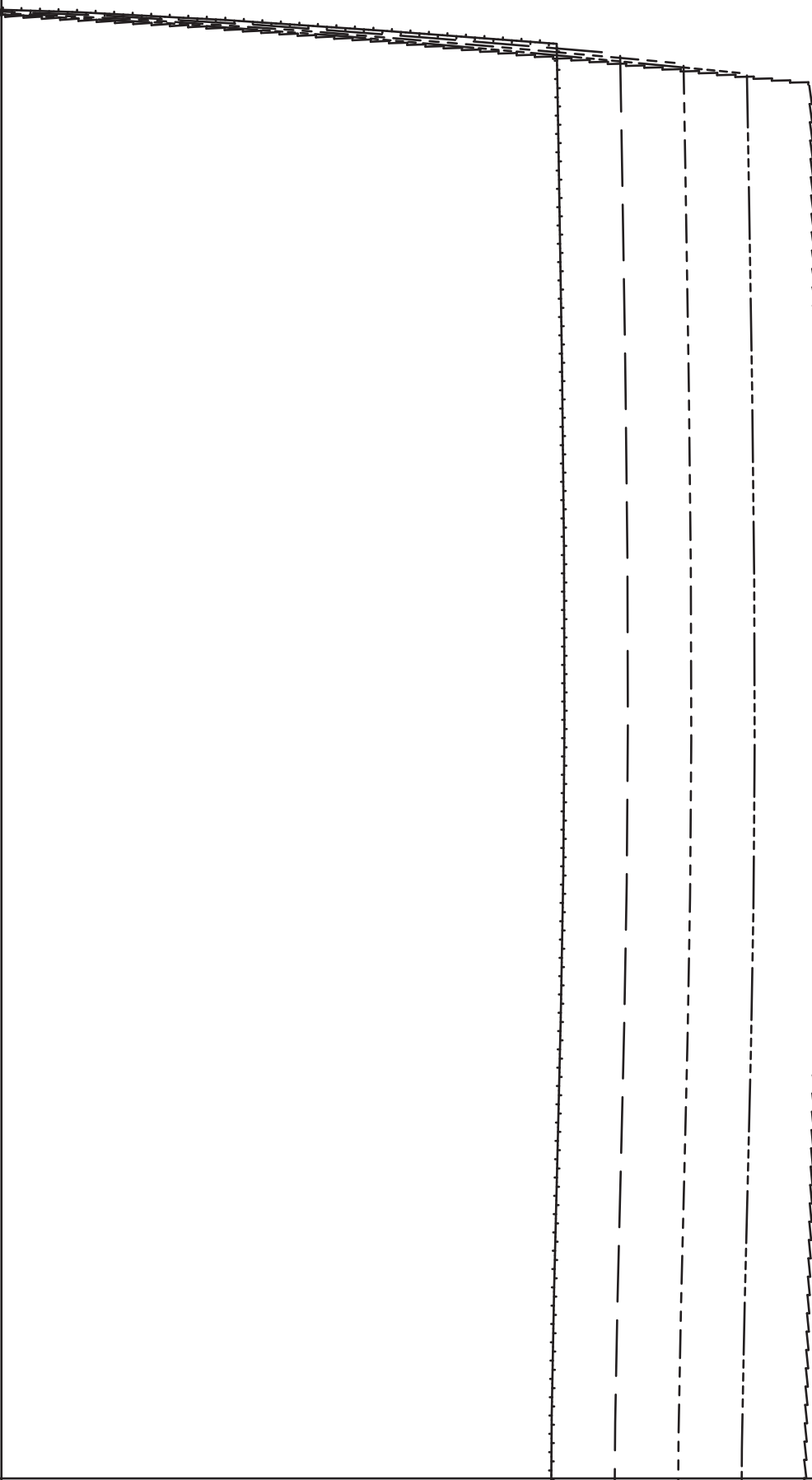
9e

21

8f

Taille
Waist
TAMM

9f



8g