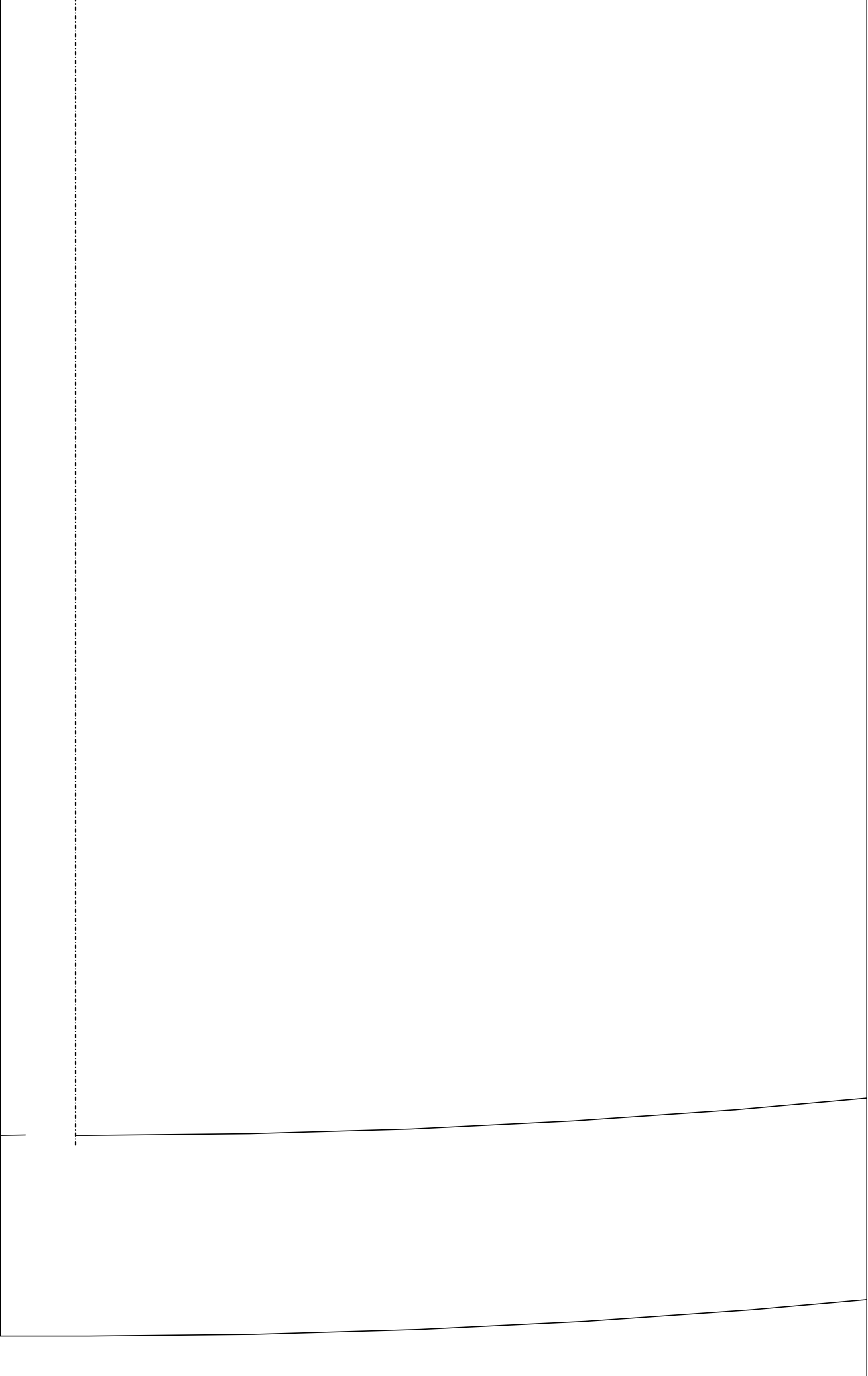
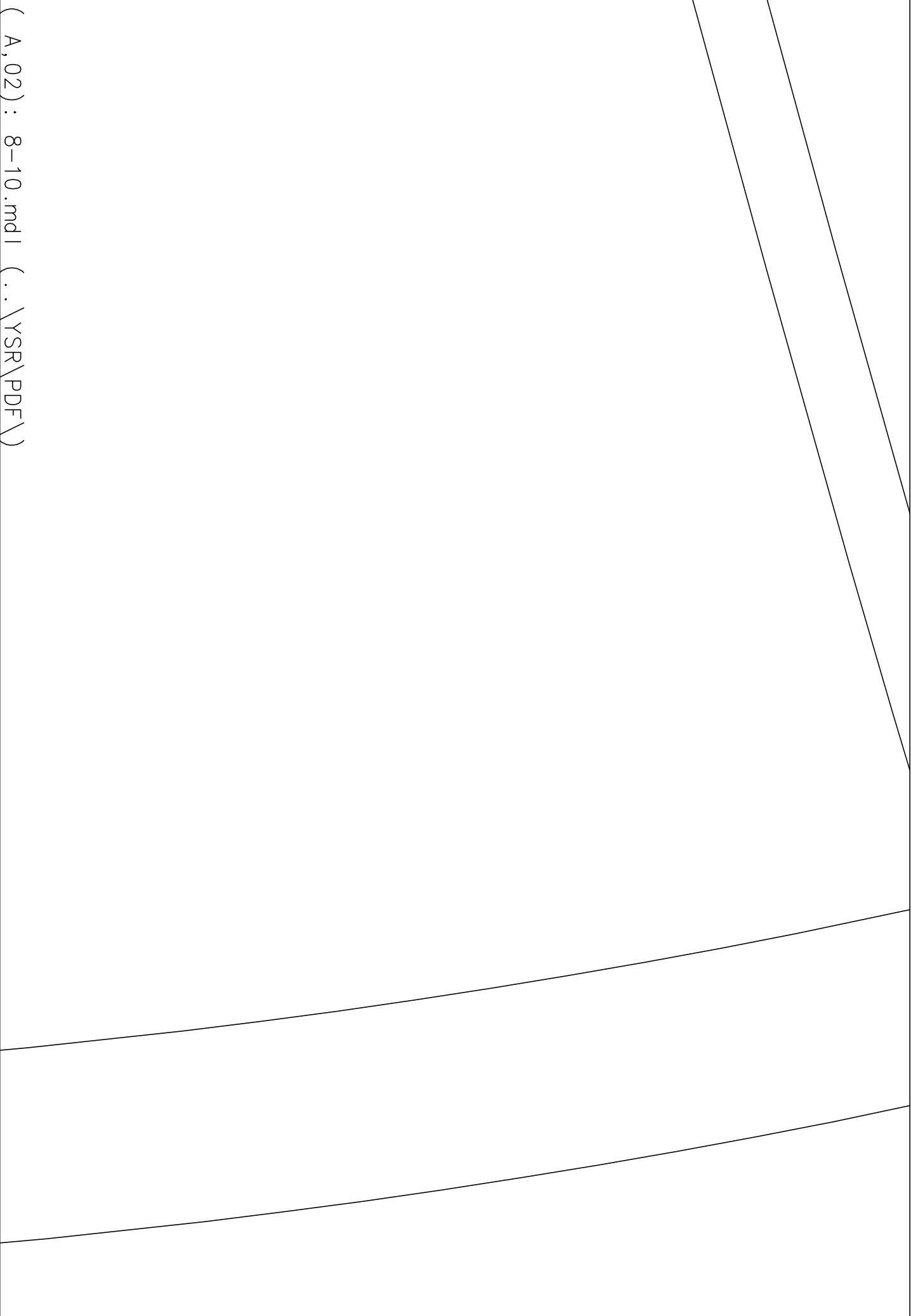


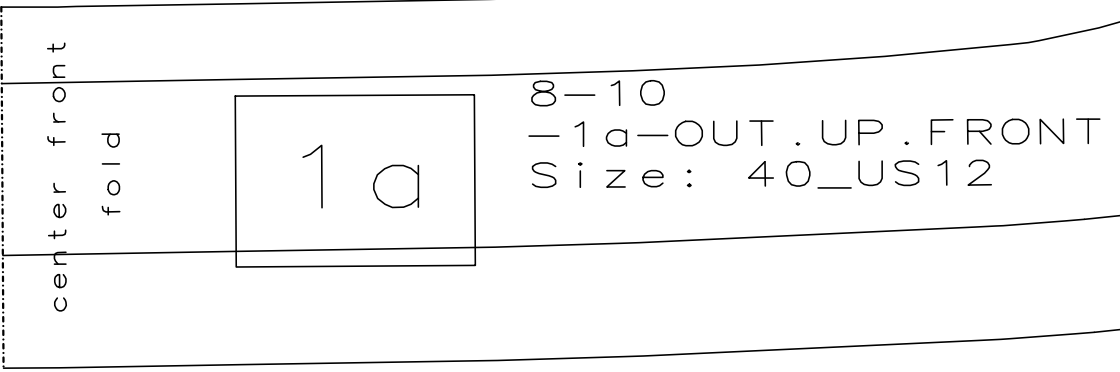
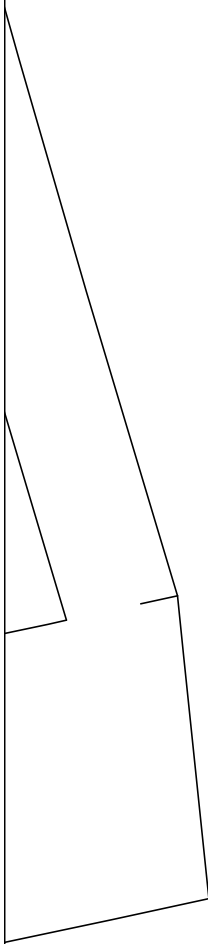
(A, 01) : 8-10.mdl (.. \YSR\PDF \)

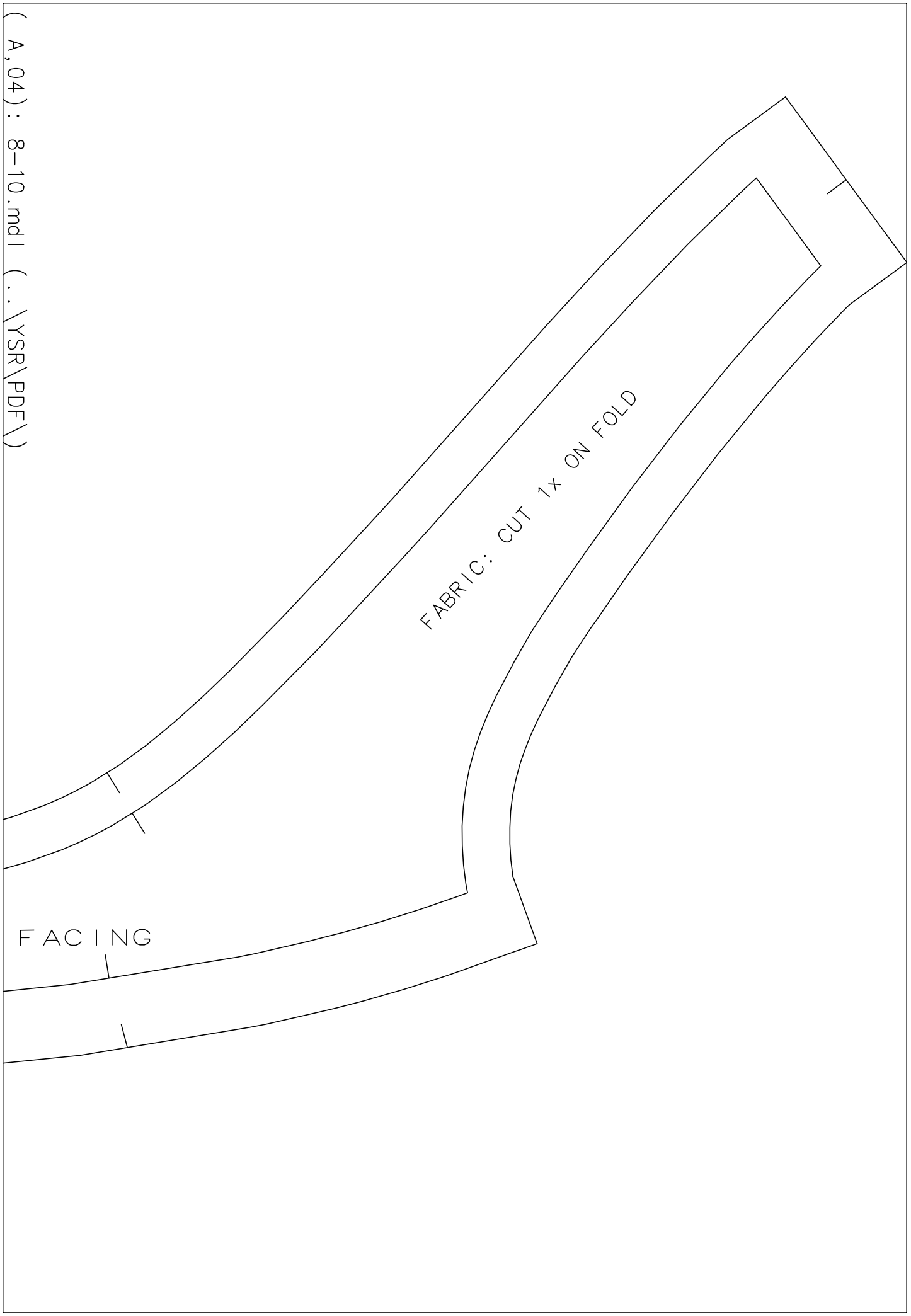


(A, 02) : 8-10.mdl (.. \YSR\PDF\)



(A, 03) : 8-10.mdl (.. \YSR\PDF\)

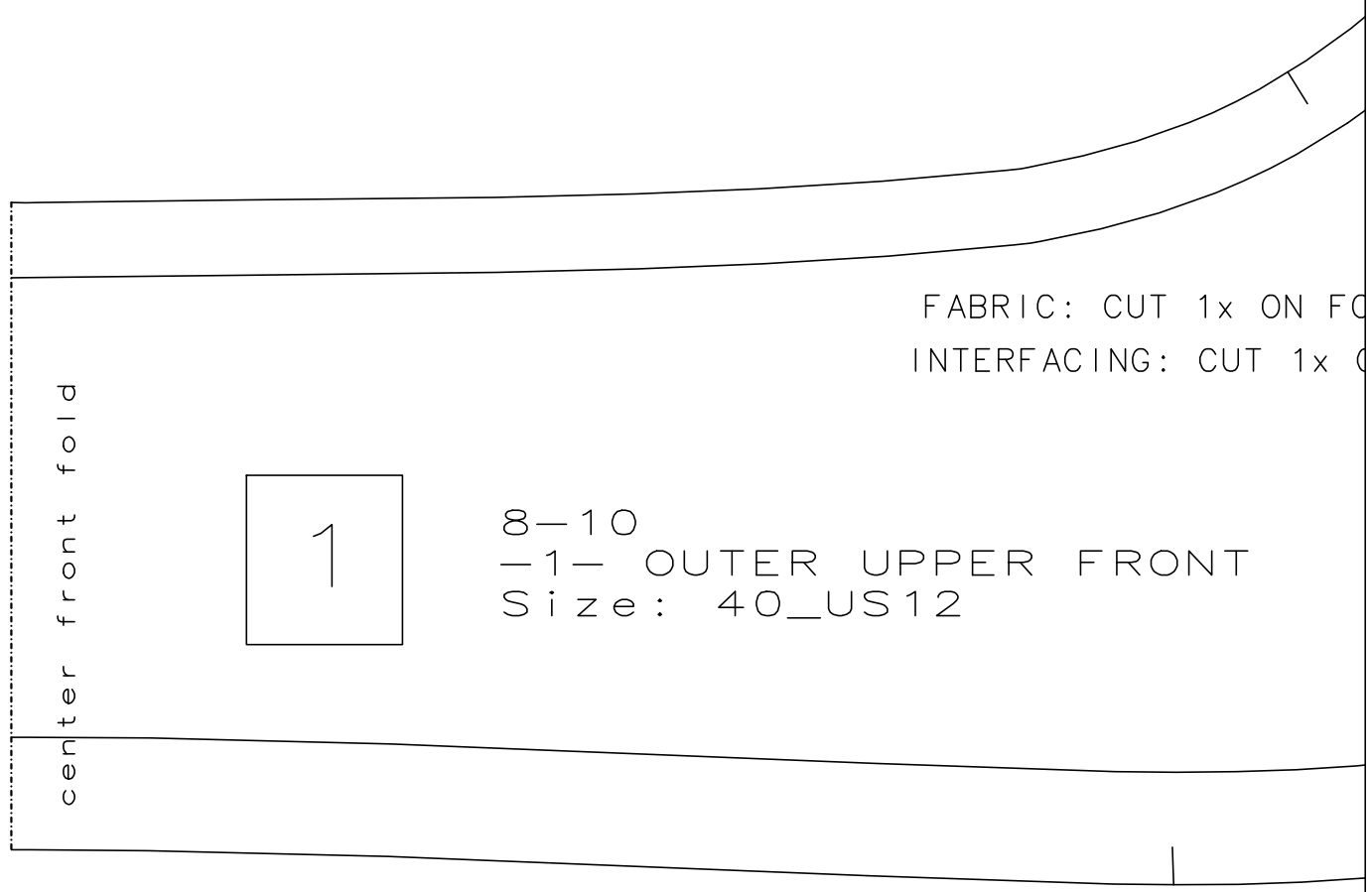




(A, 04) : 8-10.mdl (..\YSR\PDF\)

FABRIC: CUT 1x ON FOLD

FACING

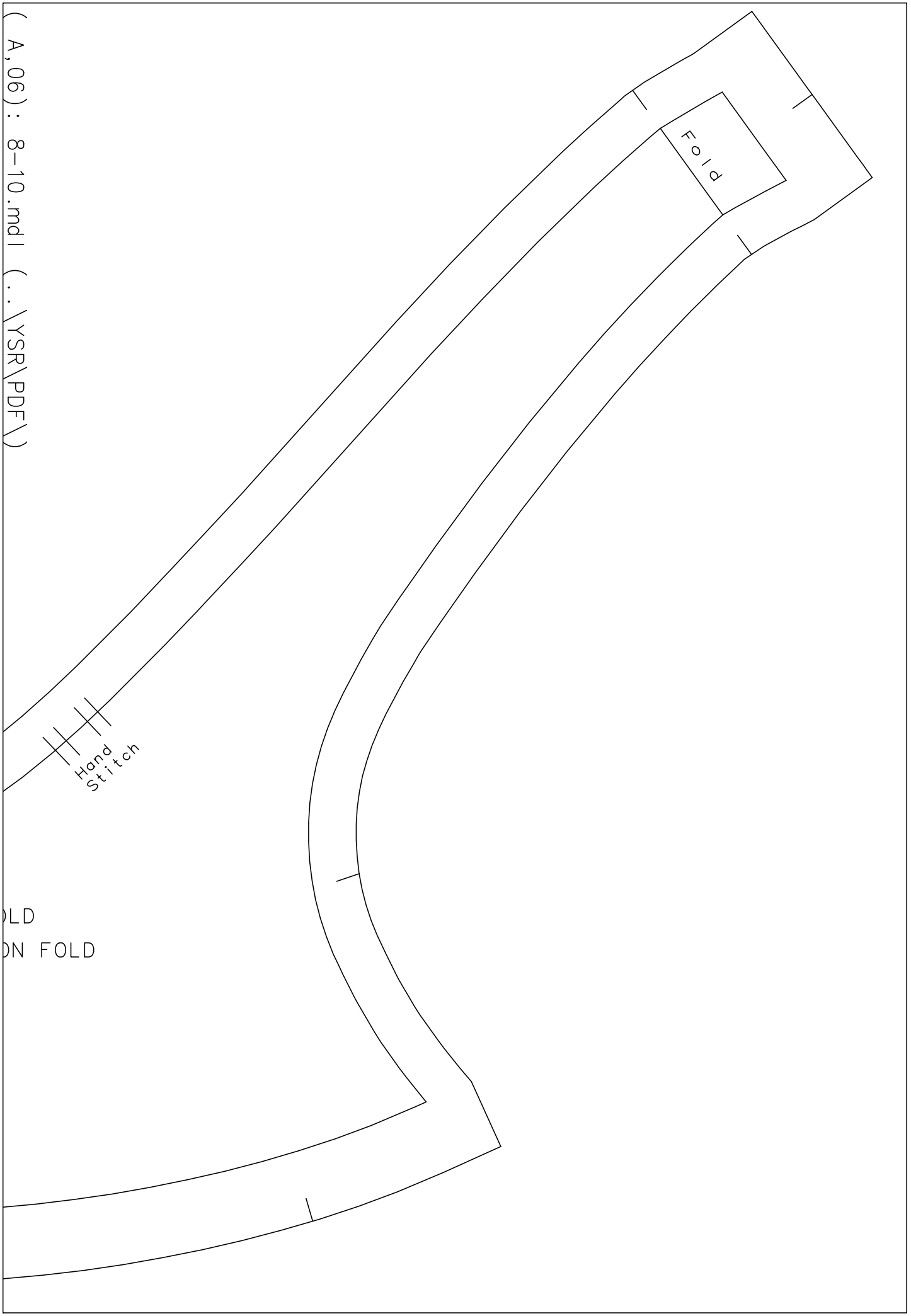


FABRIC: CUT 1x ON FC
INTERFACING: CUT 1x C

1

8-10
-1- OUTER UPPER FRONT
Size: 40_US12

center front fold



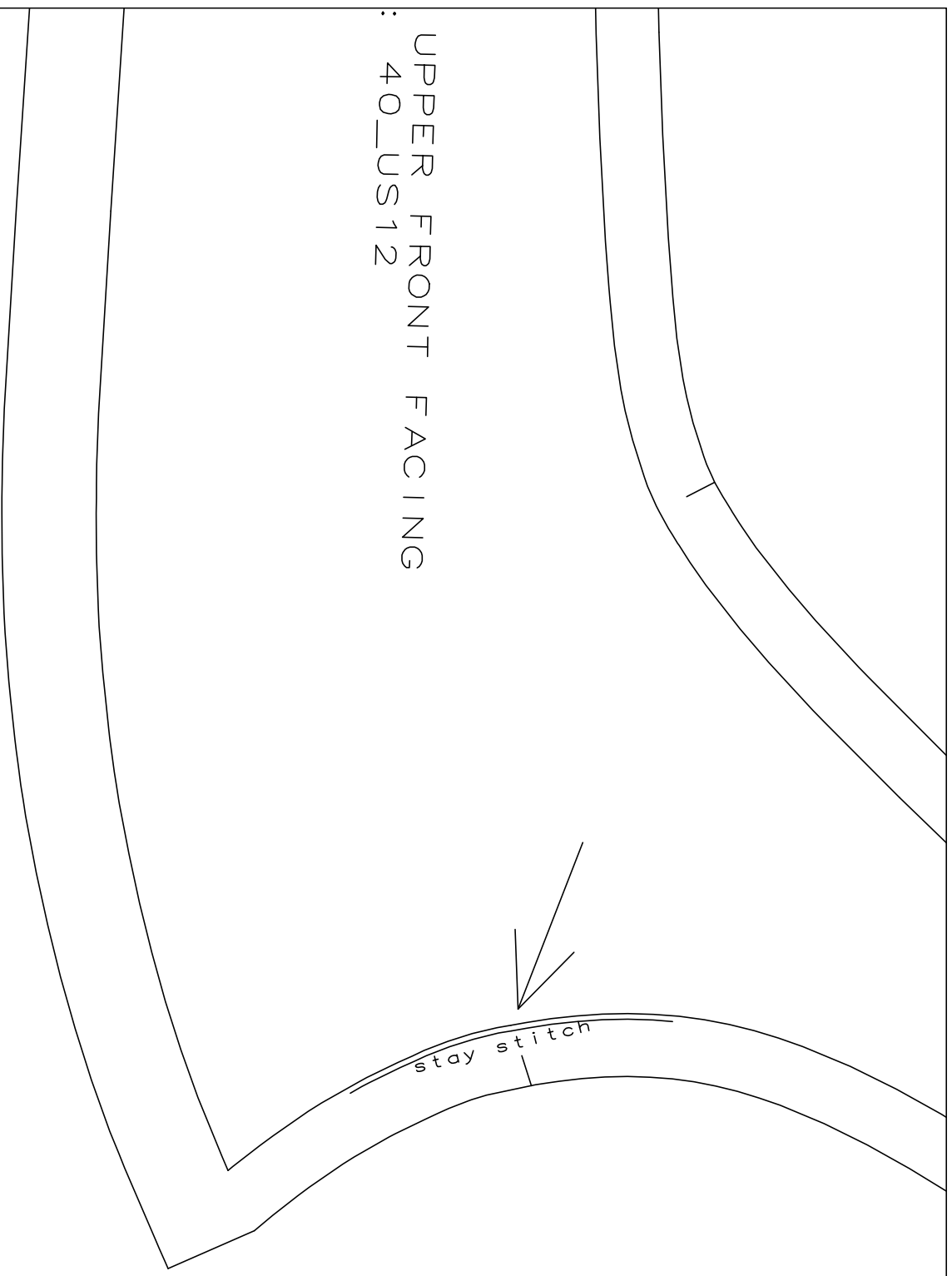
Fold

Hand
Stitch

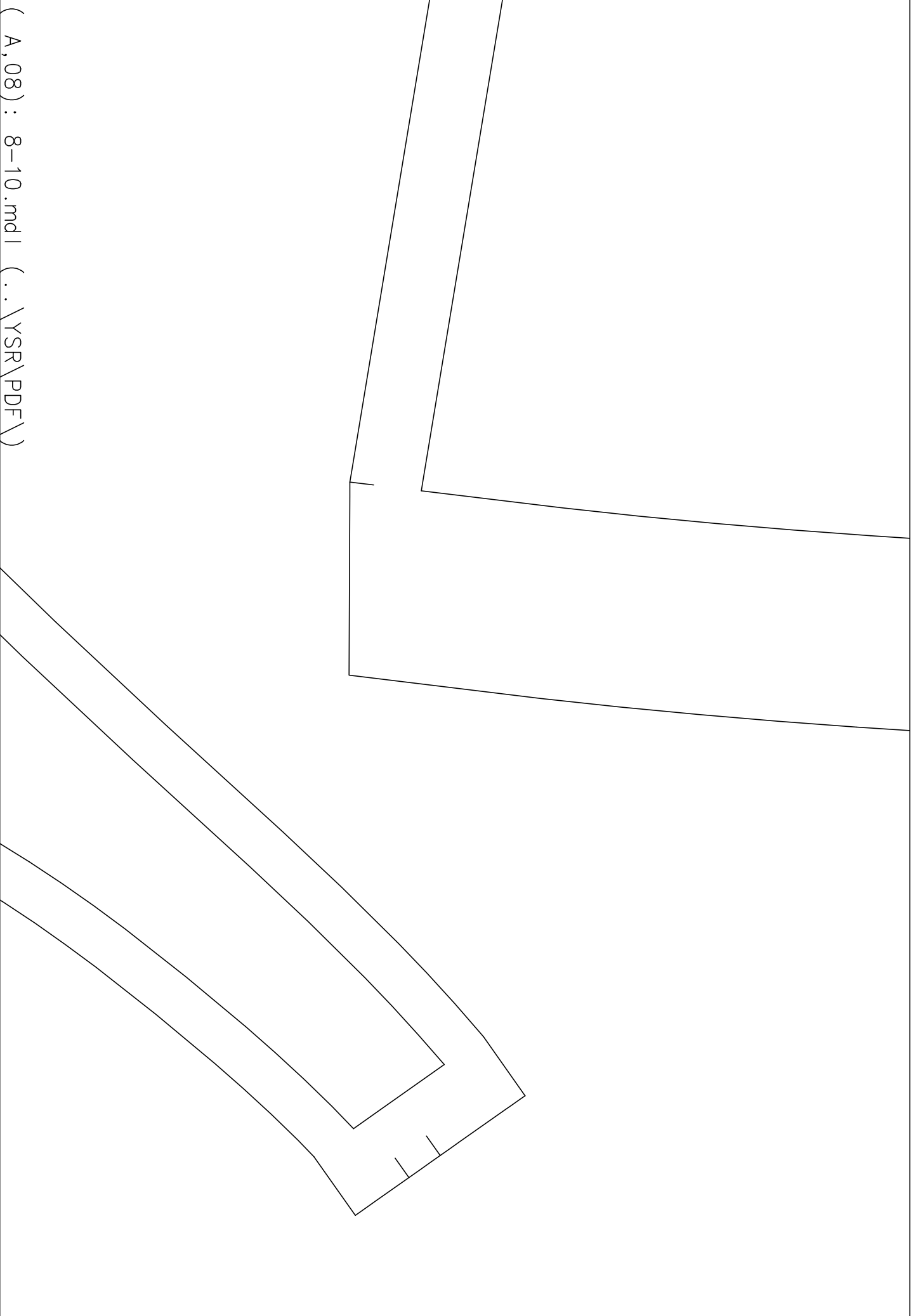
OLD
ON FOLD

(A, 06) : 8-10.mdl (.. \YSR\PDF\)

UPPER FRONT FACING
: 40_US12



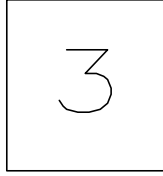
(A,07) : 8-10.mdl (..\YSR\PDF\)



(A, 08) : 8-10.mdl (.. \YSR\PDF \)

(A, 09) : 8-10.mdi (.. \YSR\PDF \)

(A, 10) : 8-10.mdl (.. \YSR\PDF\)

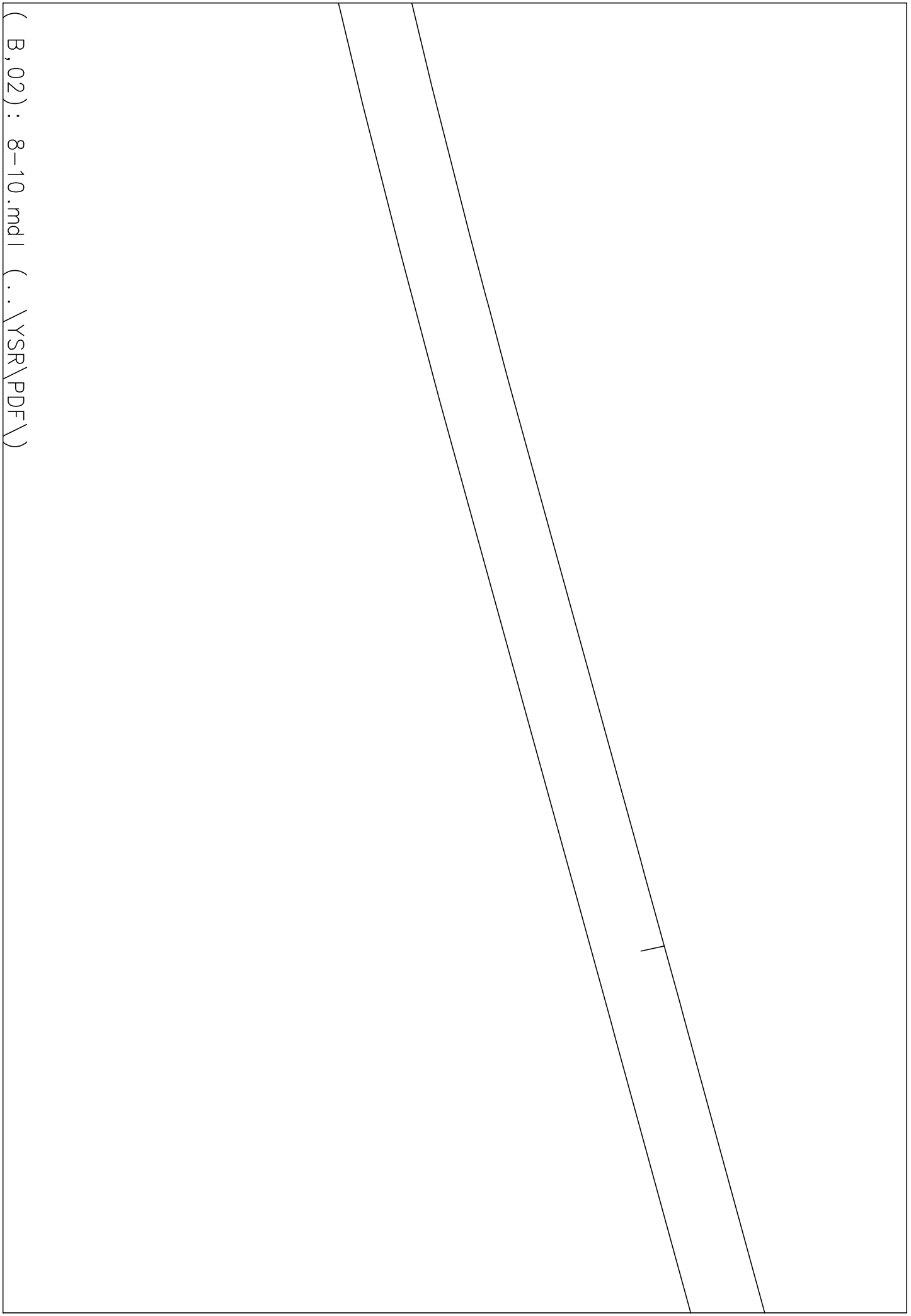


8-10
-3- FRONT
Size: 40_US12

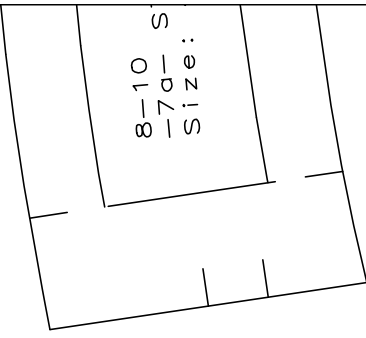
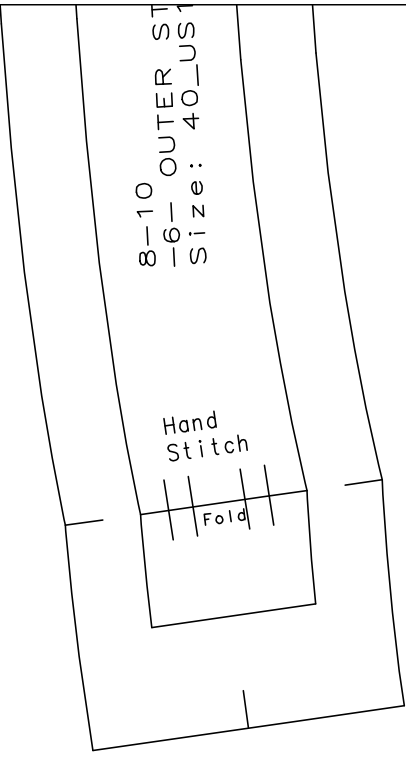
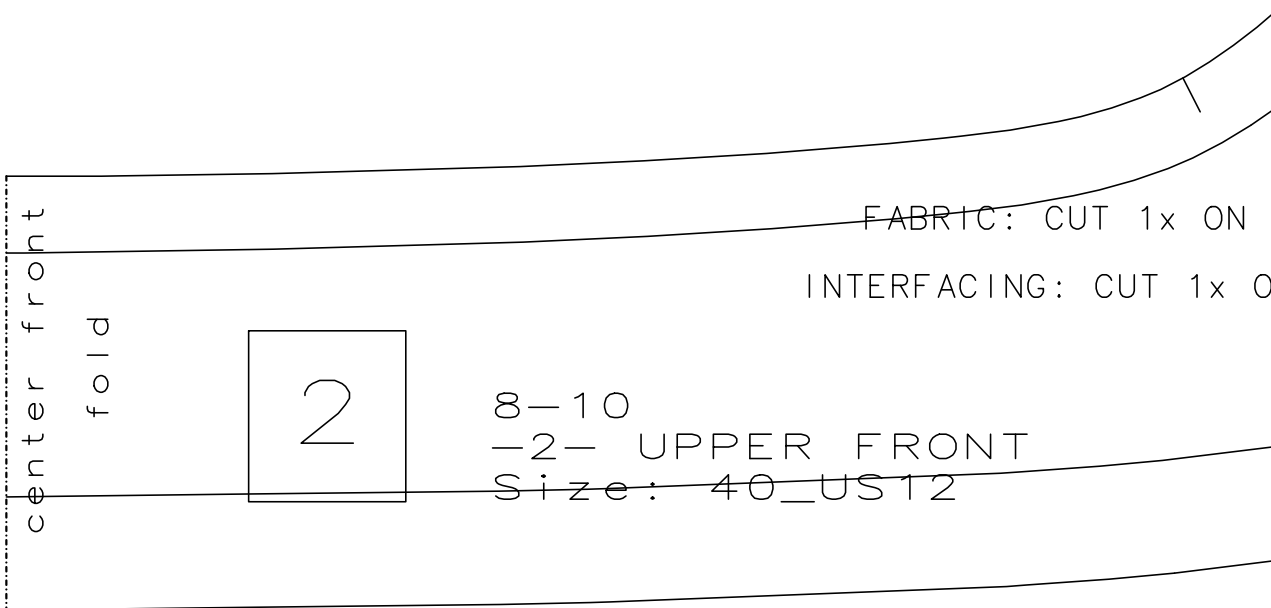
FABRIC: CUT 2x

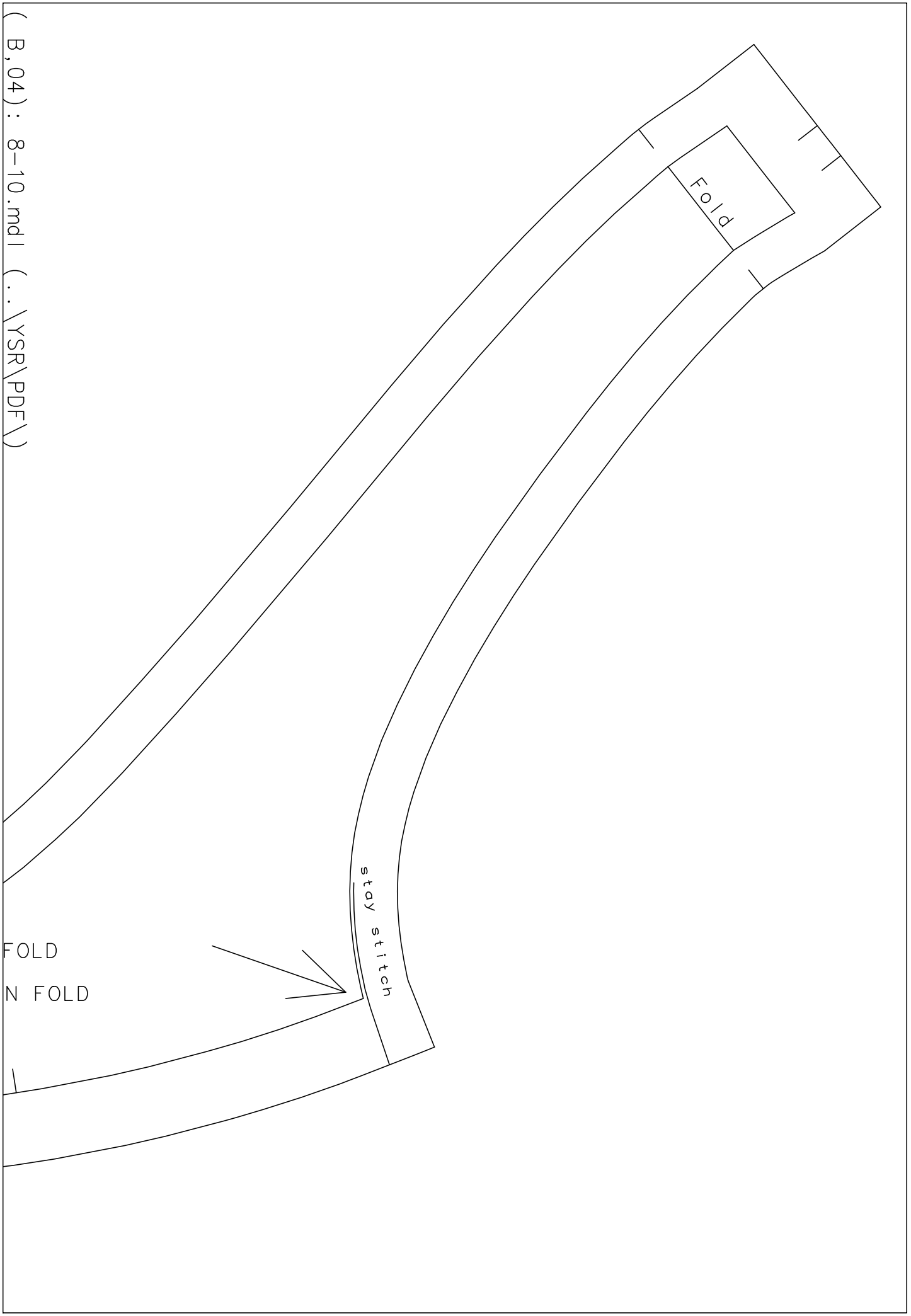
LINING: CUT 2x

grainline



(B, 02) : 8-10.mdl (.. \YSR\PDF\)



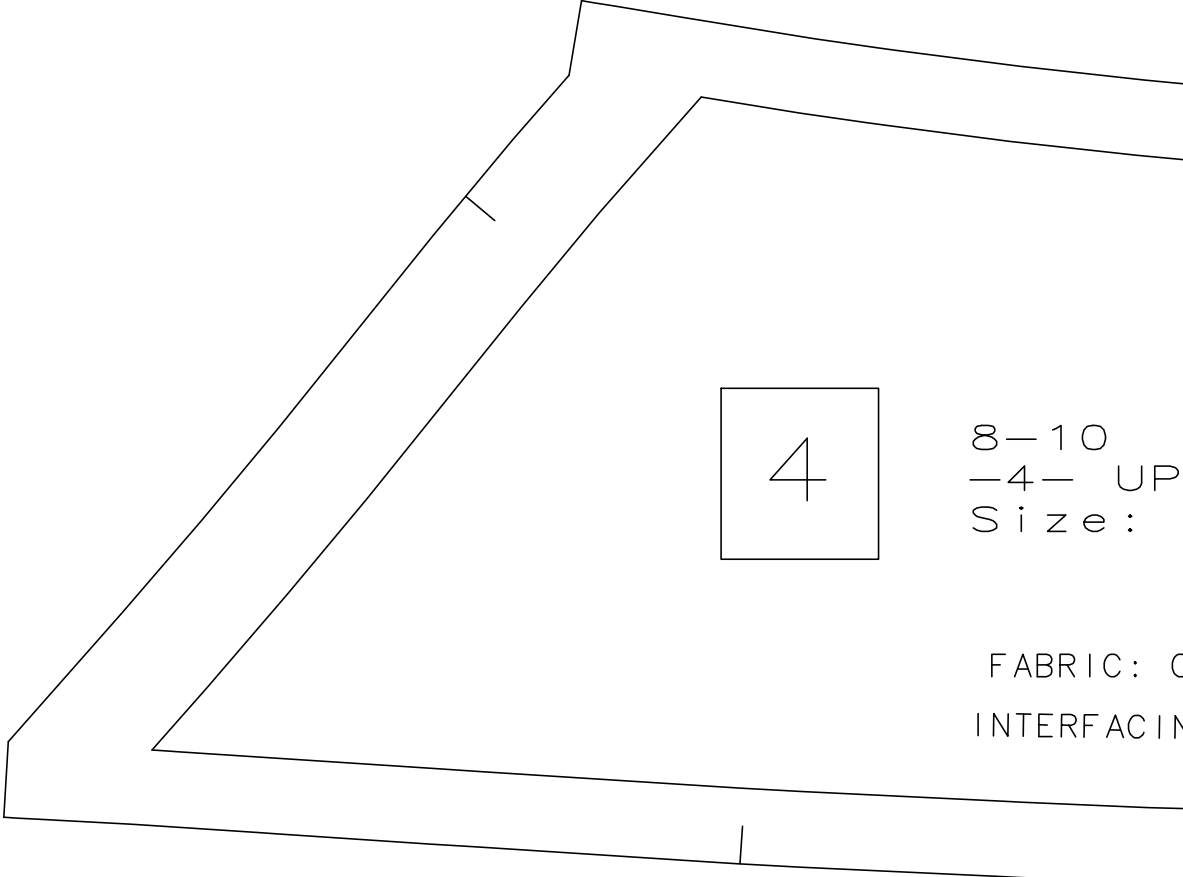
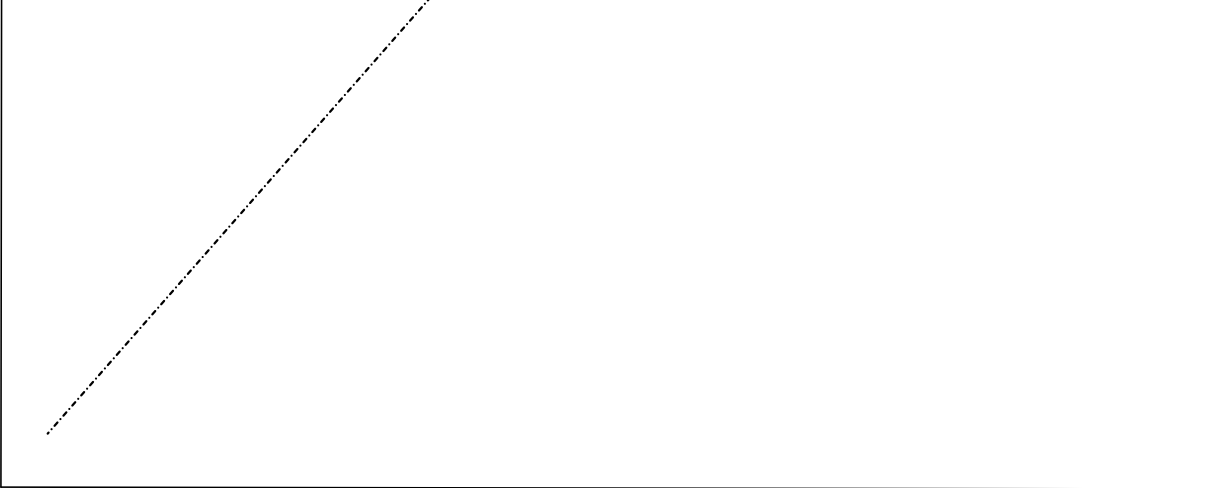


(B, 04) : 8-10.mdl (.. \YSR\PDF \)

FOLD
N FOLD

stay stitch

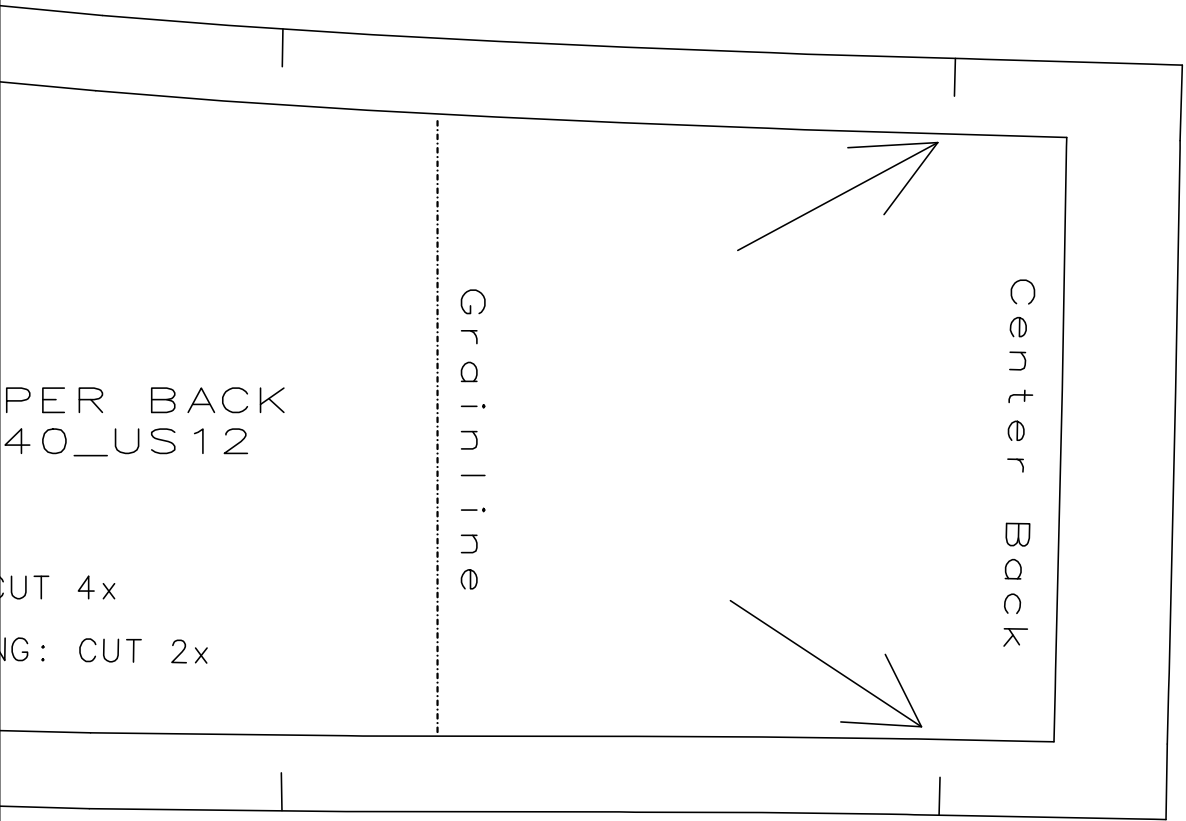
Fold



8-10
-4- UP
Size :

FABRIC: C
INTERFACING

(B,06) : 8-10.mdl (..\YSR\PDF\)



PER BACK
40_US12

CUT 4x

W: CUT 2x

8-10
-7-
Size:

Hand
Stitch

Fold

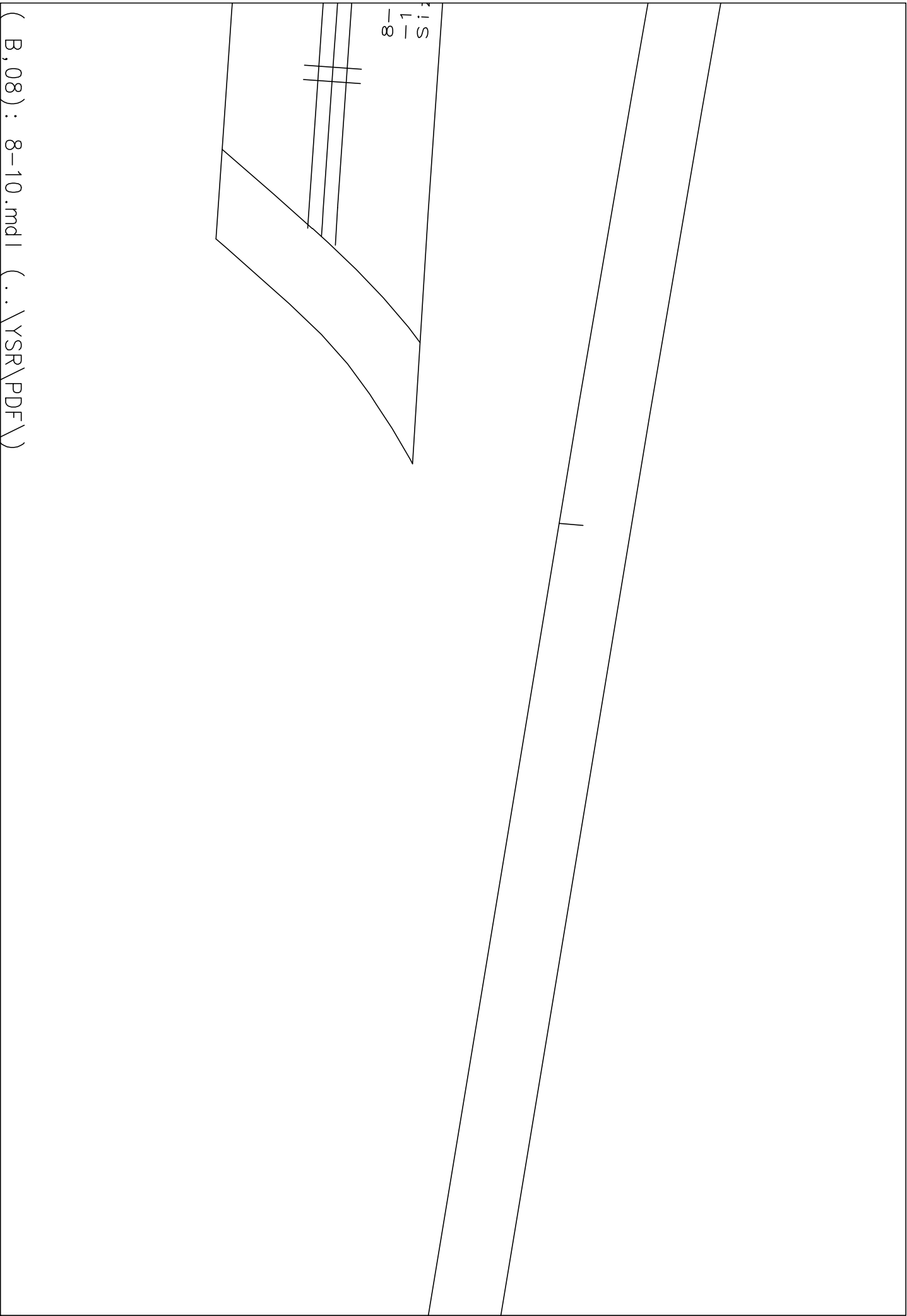
8-10
-6-
OUT STRAP
NO
Size: 40-512

center front fold

20

8-10
-2-
Size

FABRIC: CUT 1x ON FOLD

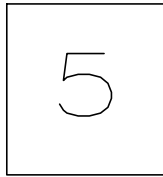


8-10



(B,08) : 8-10.mdl (..\YSR\PDF\)

g r a i n l i n e



8-10
-5- BACK
Size: 40_US12

FABRIC: CUT 2x

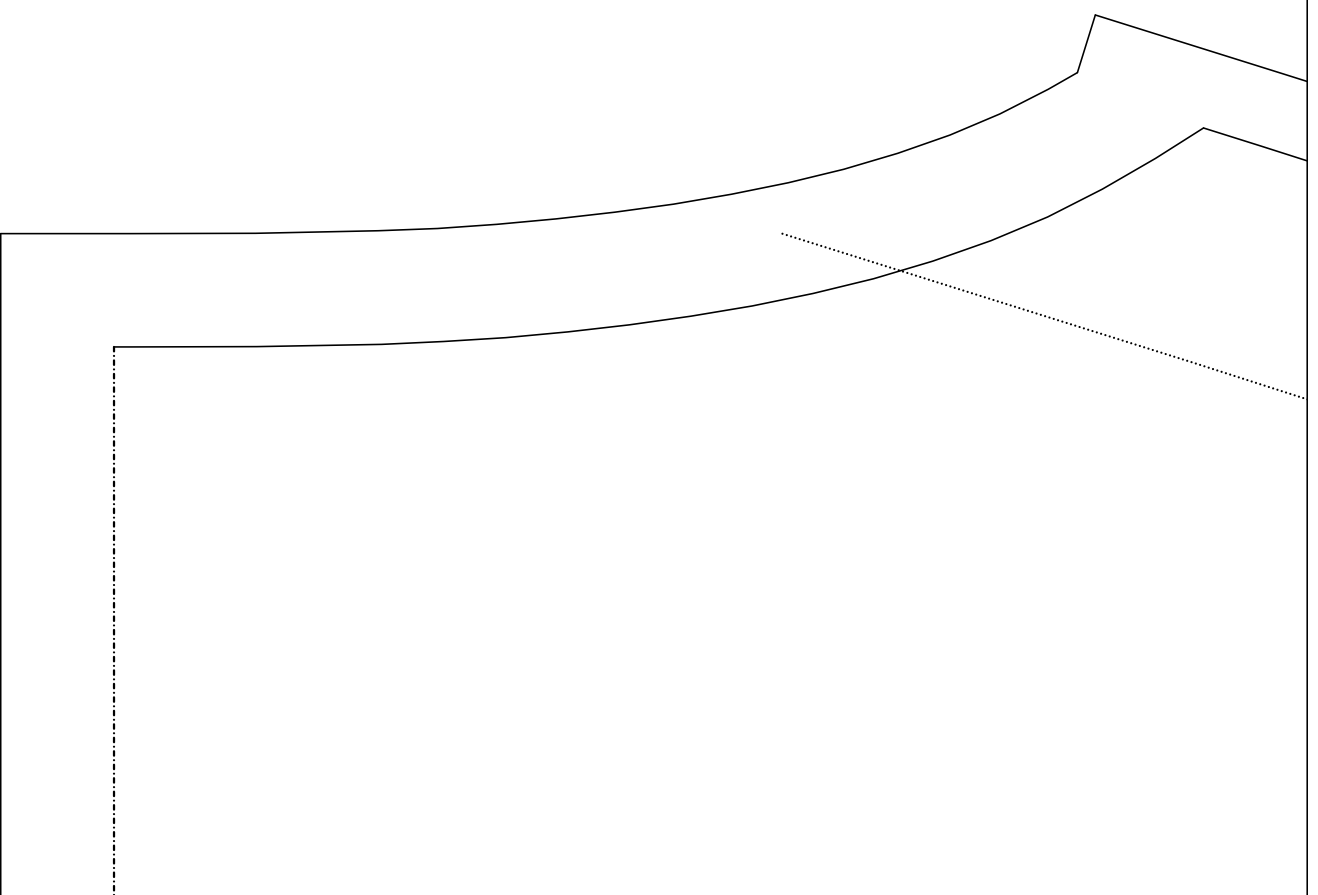
LINING: CUT 2x

|

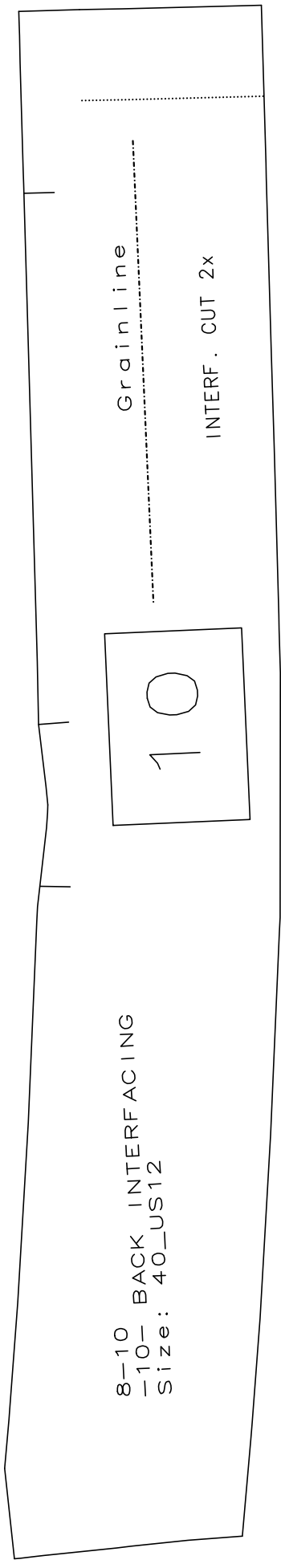
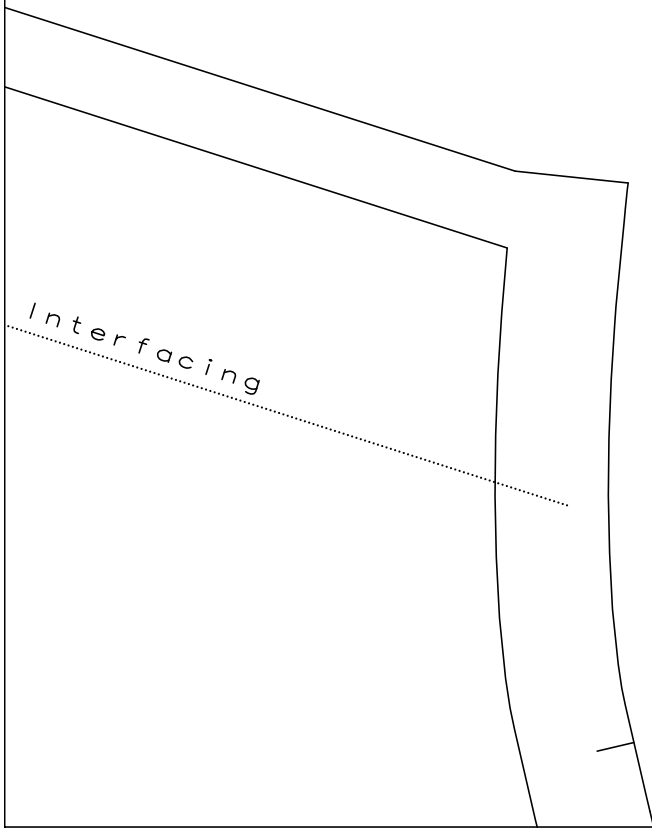
zipper

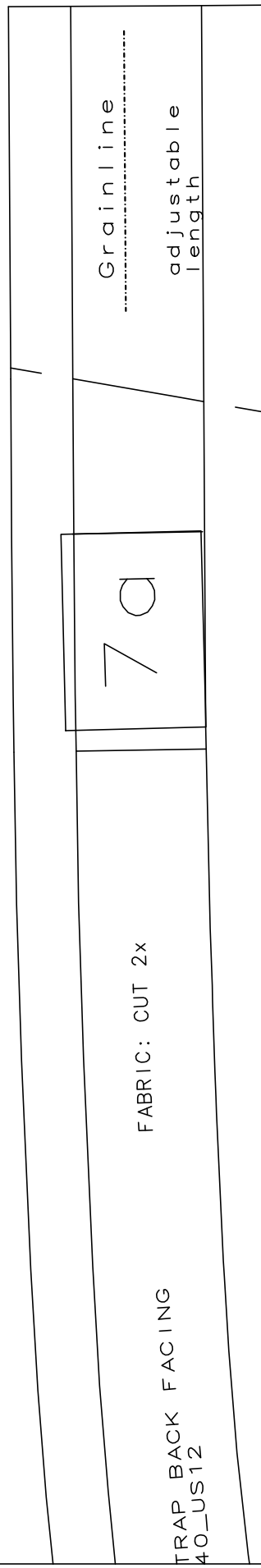
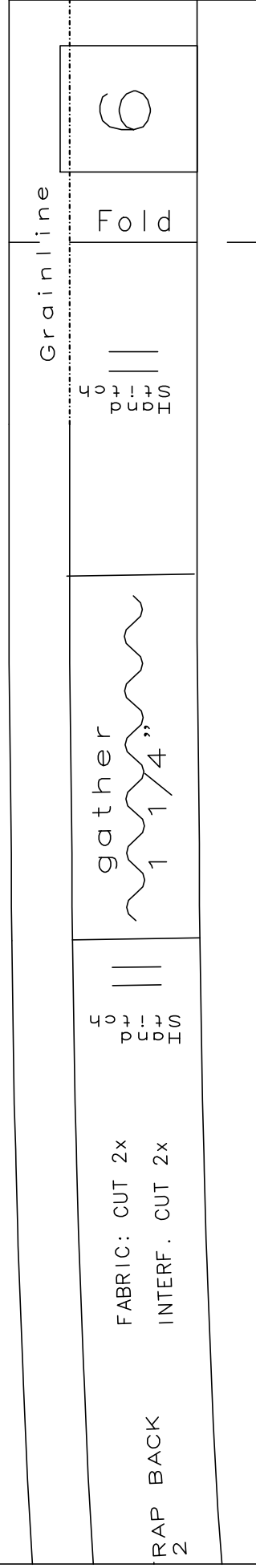
(B, 10) : 8-10.mdl (.. \YSR\PDF\)

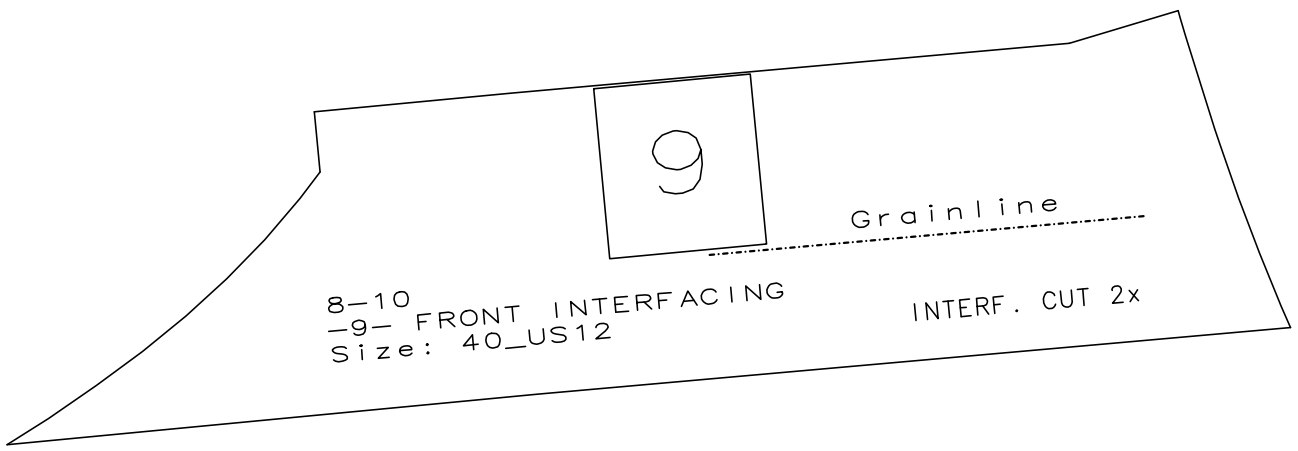
(c, 01) : 8-10.mdl (.. \YSR\PDF \)



(C,02) : 8-10.mdl (.. \YSR\PDF \)





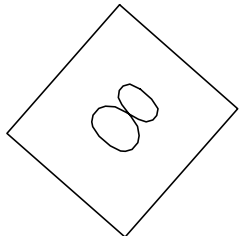


8-10 ROUGE
Size: 40-

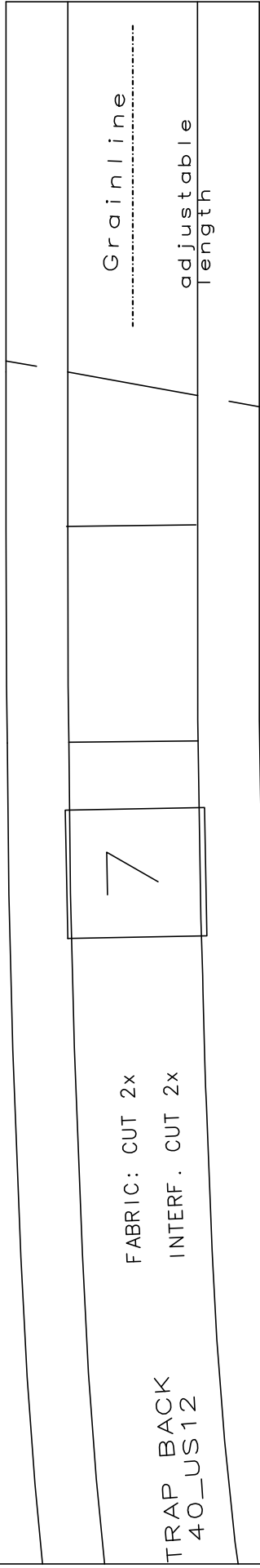
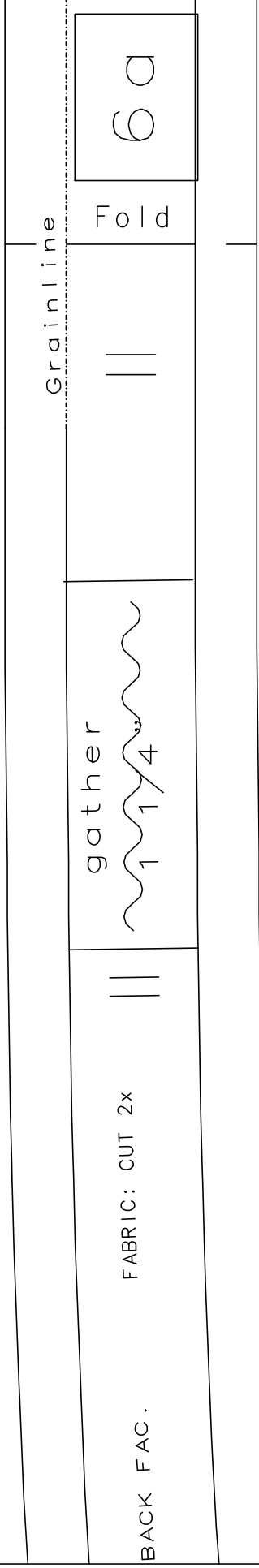
FABRIC: CUT 2x

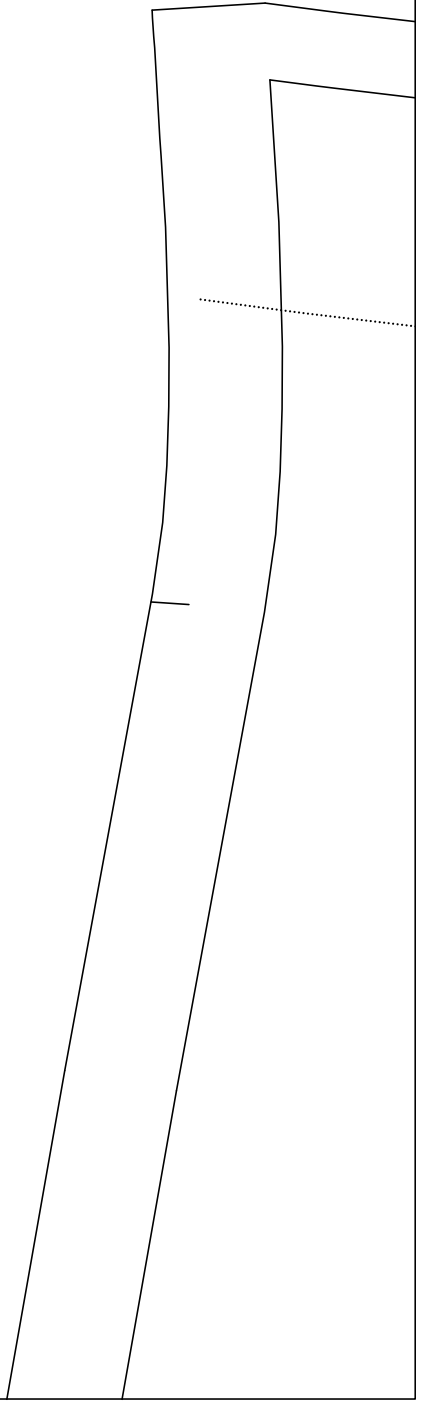
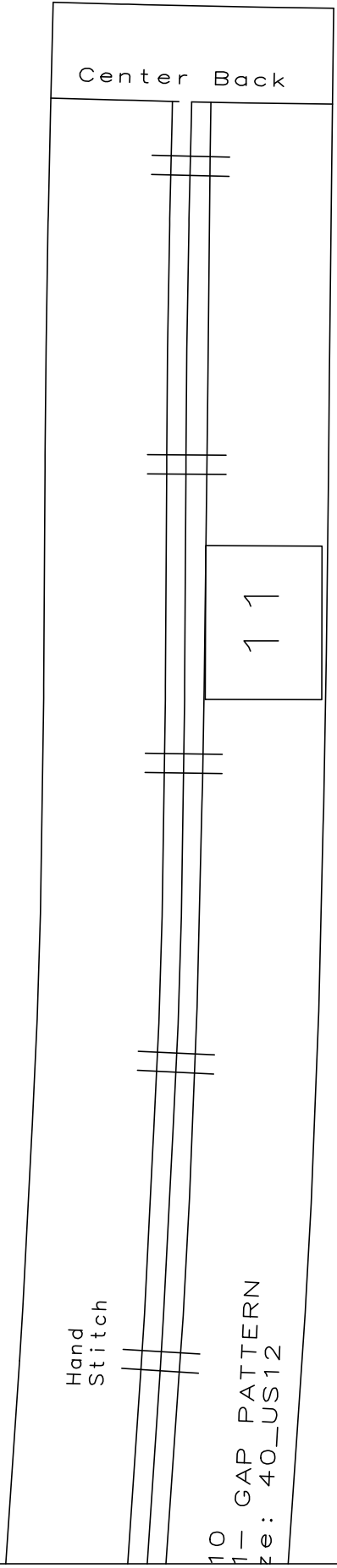
(c, 06) : 8-10.mdi (.. \YSR\PDF \)

Grainline

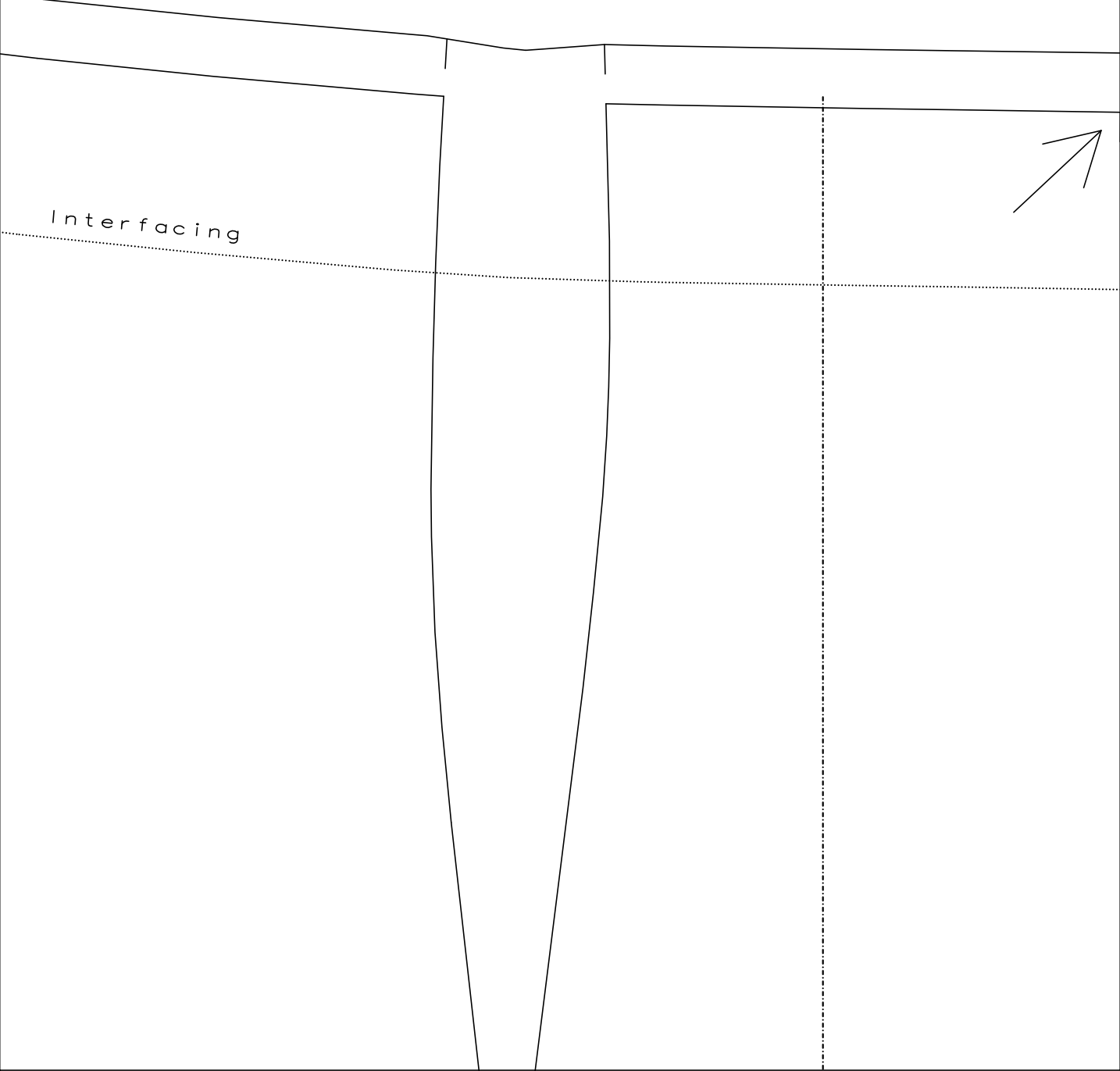


SH CUT BRA
US12





(c, 09) : 8-10.mdl (.. \YSR\PDF \)



(c, 10) : 8-10.mdl (.. \YSR\PDF\)

