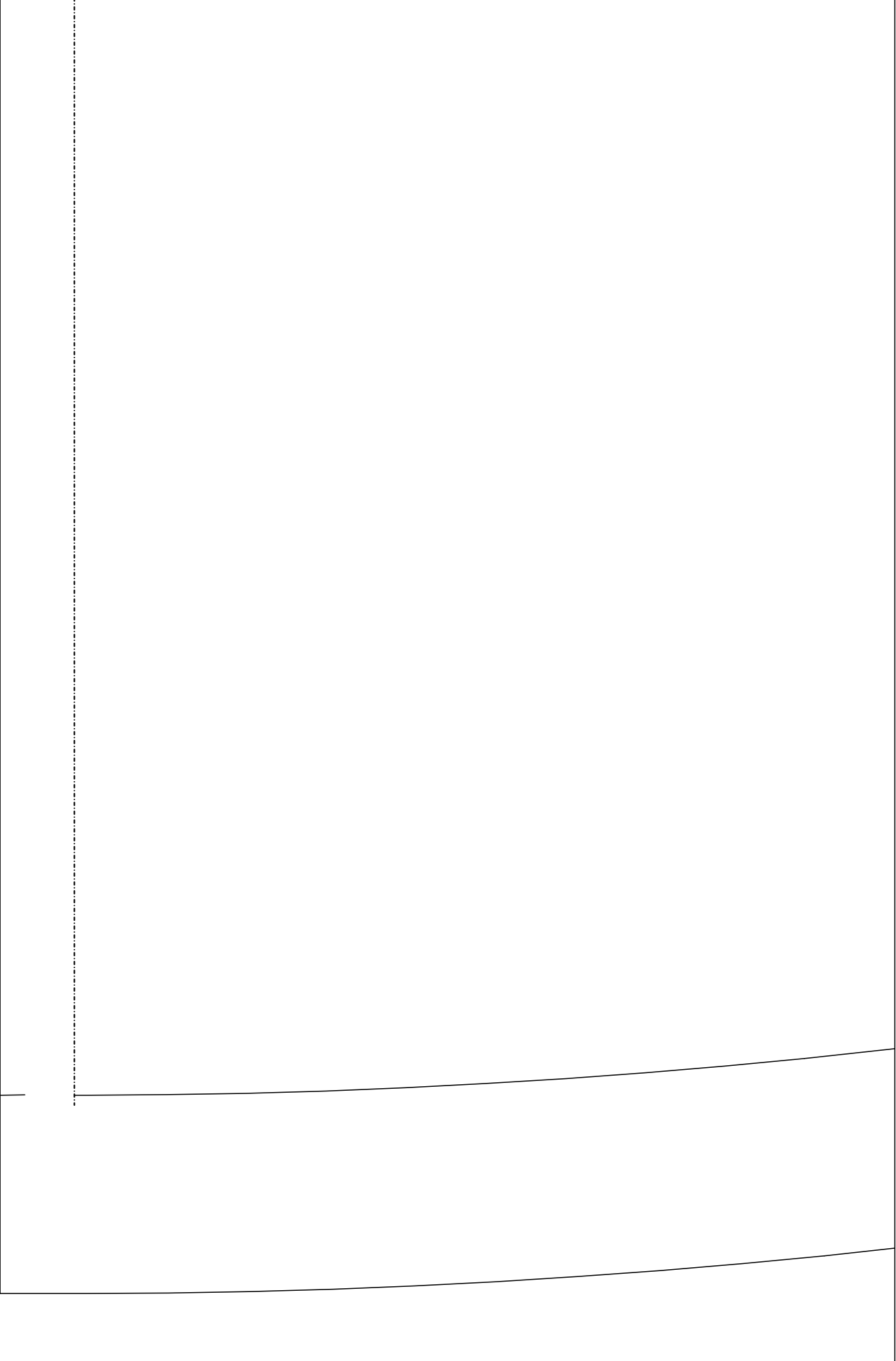
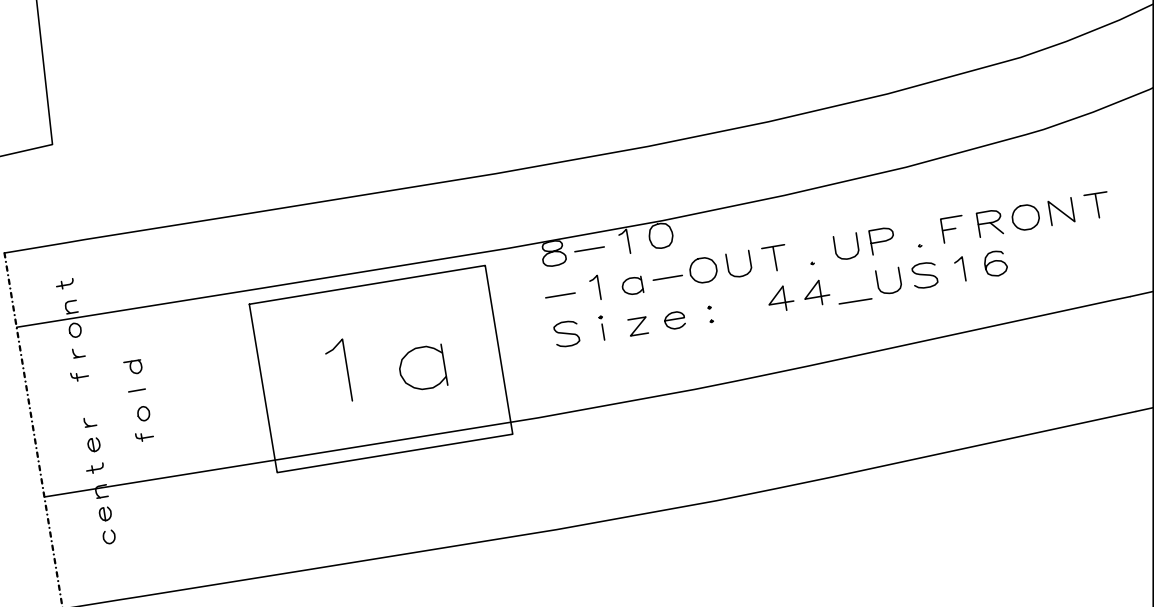
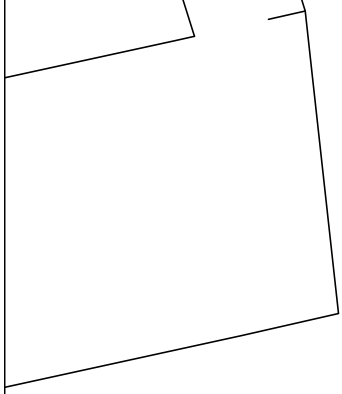


(A, 01) : 8-10.mdl (.. \YSR\PDF \)



(A, 02) : 8-10.mdl (.. \YSR\PDF\)

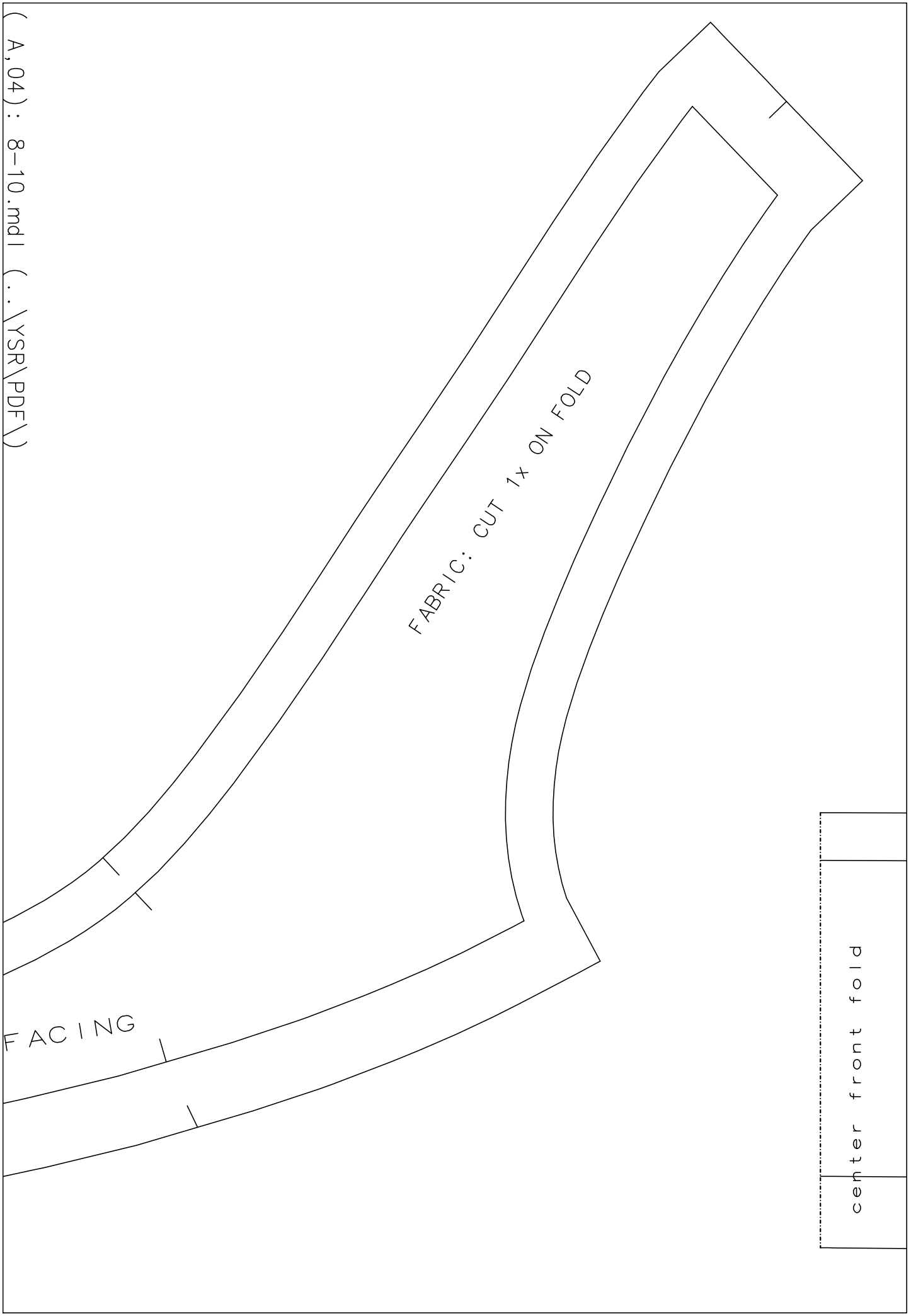
(A, 03) : 8-10.pdf (.. \YSR\PDF \)



center front
fold

1a

8-10
-1a-OUT.UP.FRONT
Size: 44_US16

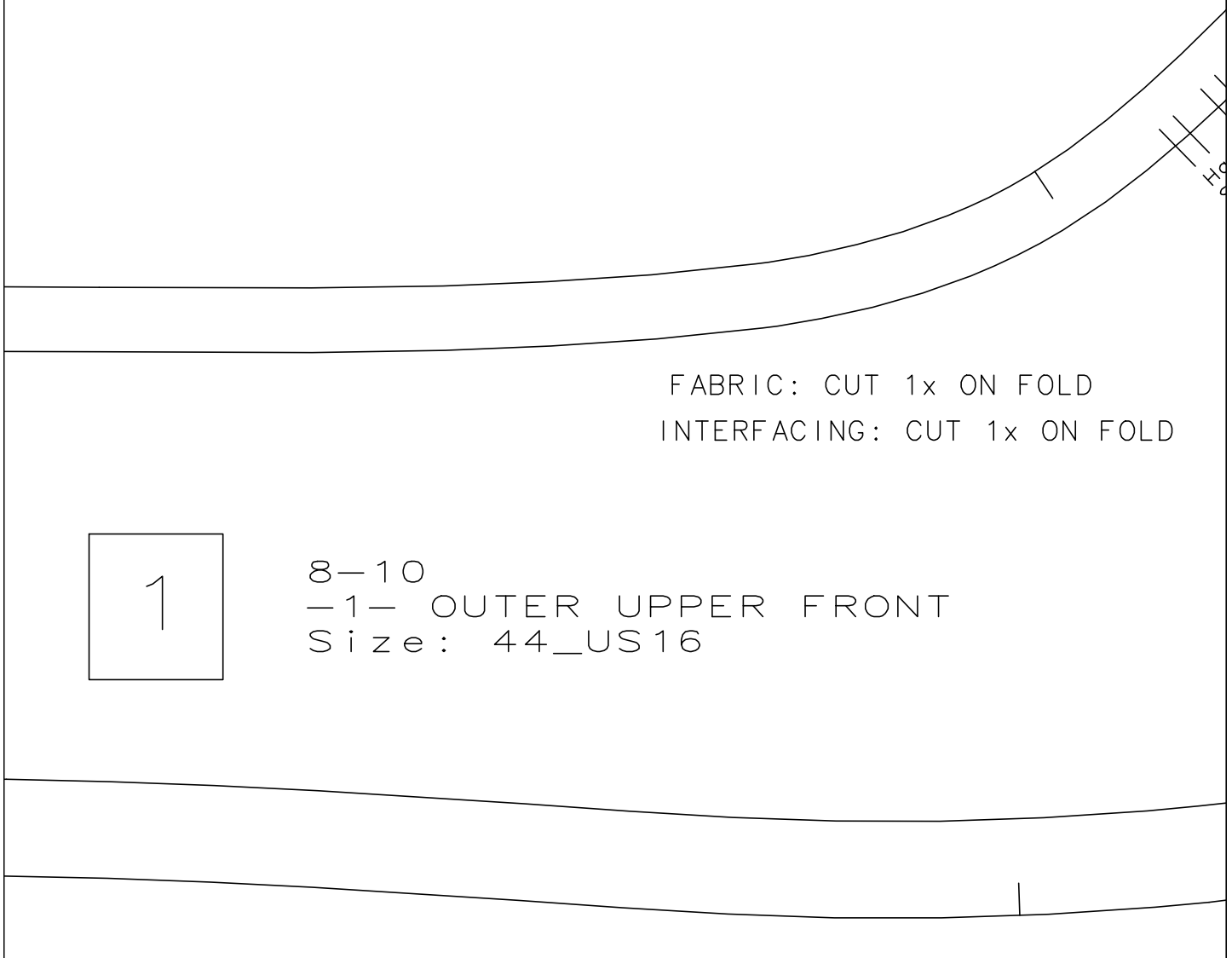


(A, 04) : 8-10.mdl (.. \YSR\PDF\)

FACING

FABRIC: CUT 1x ON FOLD

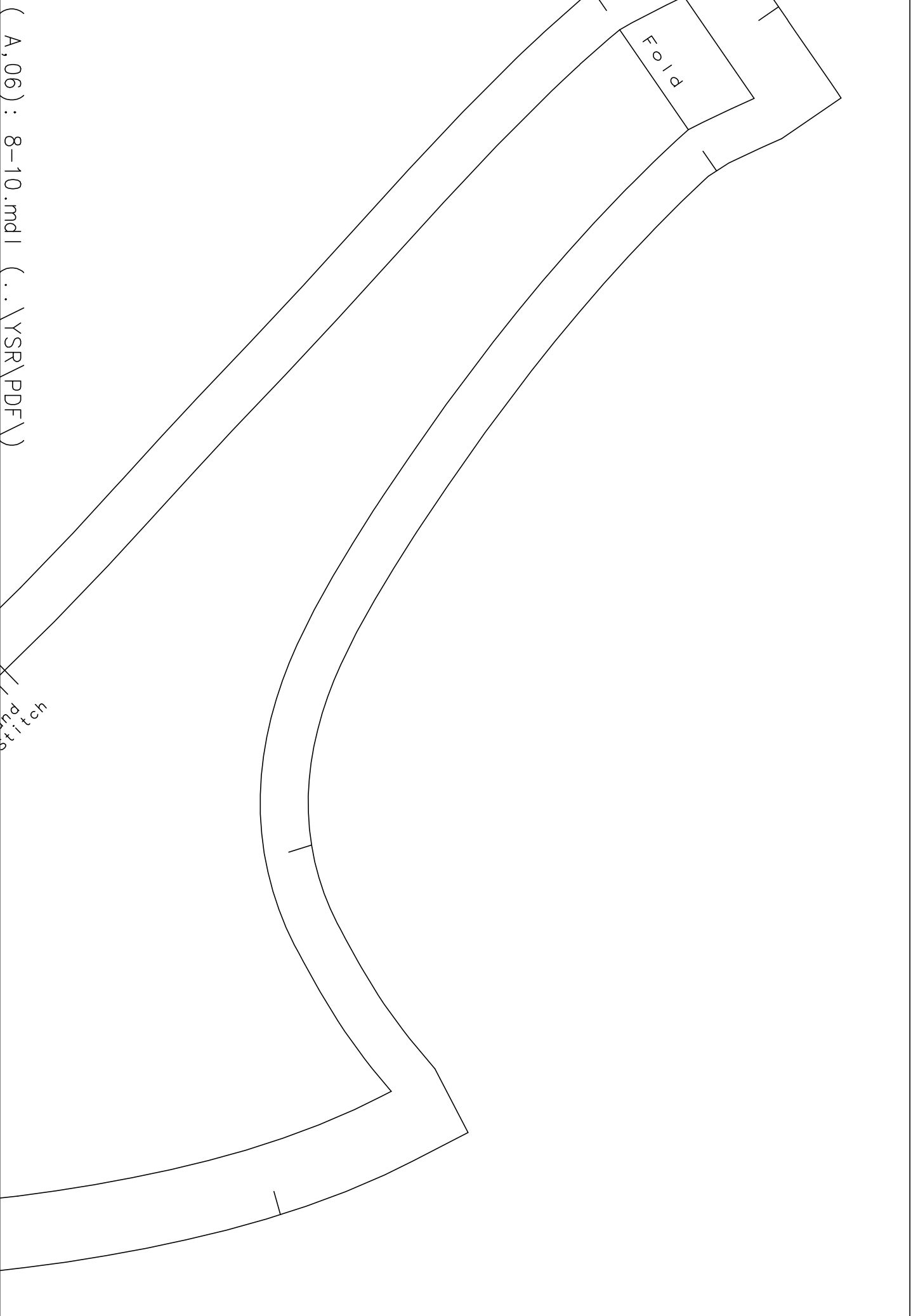
center front fold



FABRIC: CUT 1x ON FOLD
INTERFACING: CUT 1x ON FOLD

1

8-10
-1- OUTER UPPER FRONT
Size: 44_US16

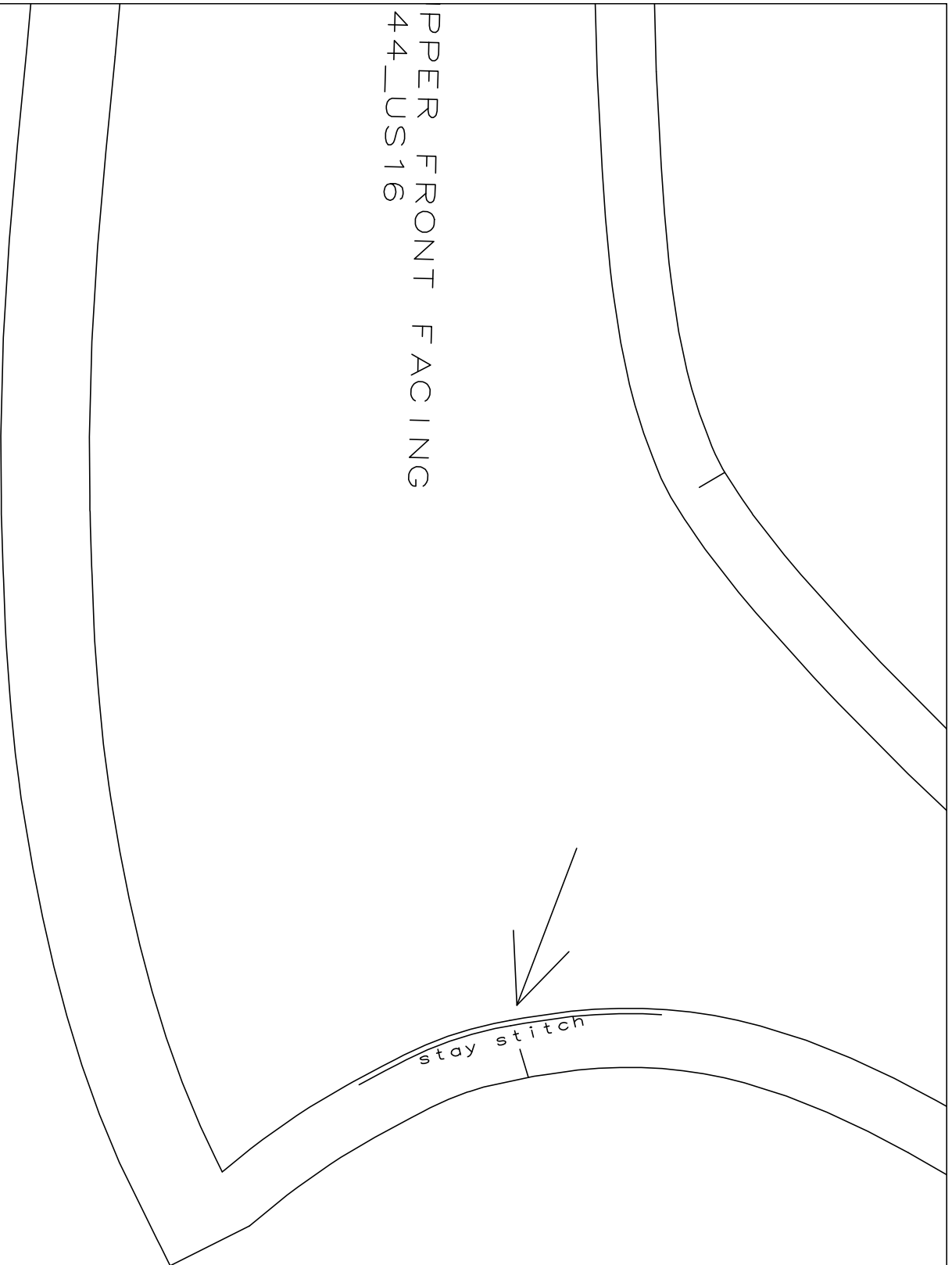


(A, 06) : 8-10.mdl (.. \YSR\PDF\)

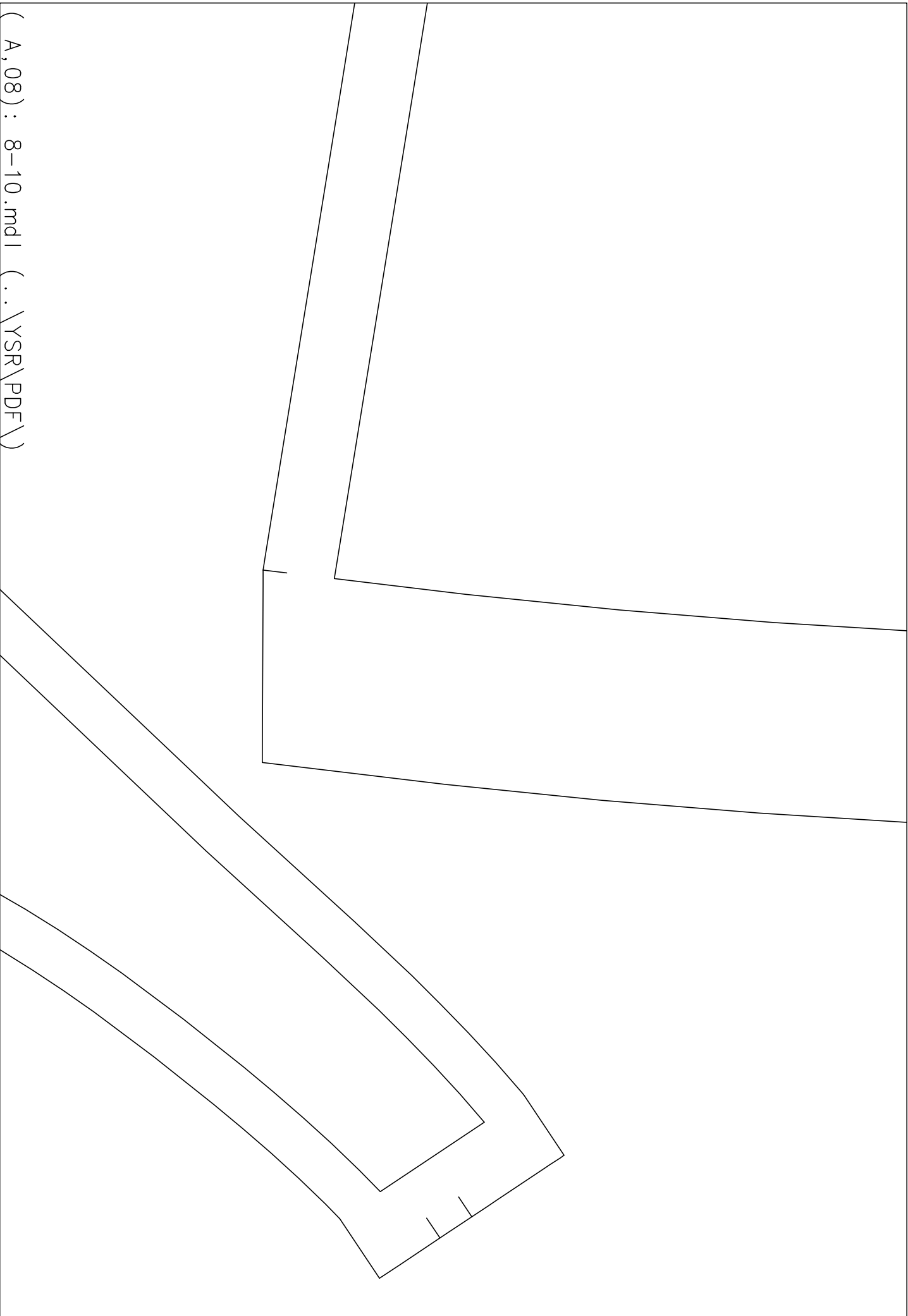
stitch

Fold

PAPER FRONT FACING
44_US16

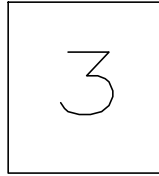


(A,07) : 8-10.mdl (..\YSR\PDF\)



(A, 09) : 8-10.mdl (.. \YSR\PDF\)

(A, 10) : 8-10.mdl (.. \YSR\PDF\)

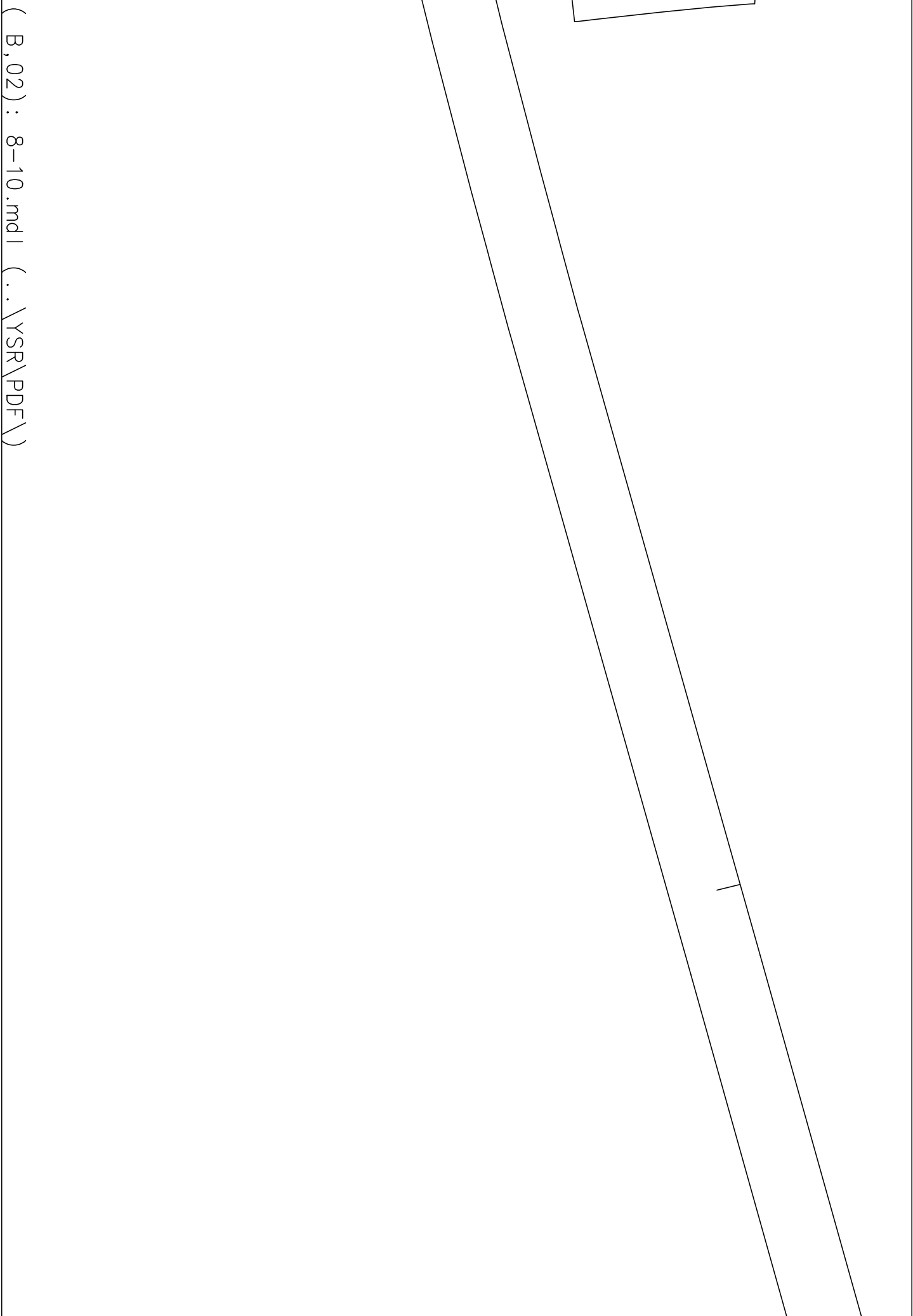


8-10
-3- FRONT
Size: 44_US16

FABRIC: CUT 2x

LINING: CUT 2x

grainline



(B, 02) : 8-10.mdl (.. \YSR\PDF\)

(B,03) : 8-10.mdl (..\YSR\PDF\)

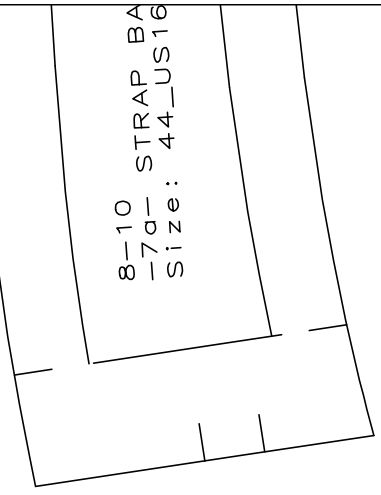
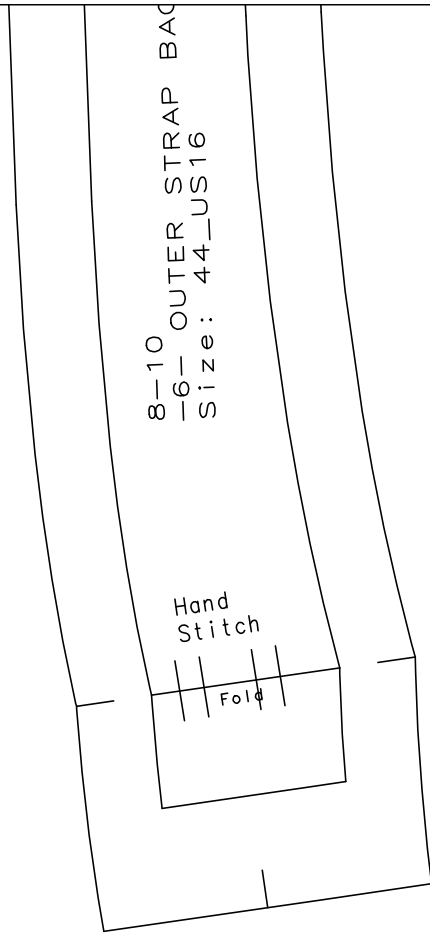
center front

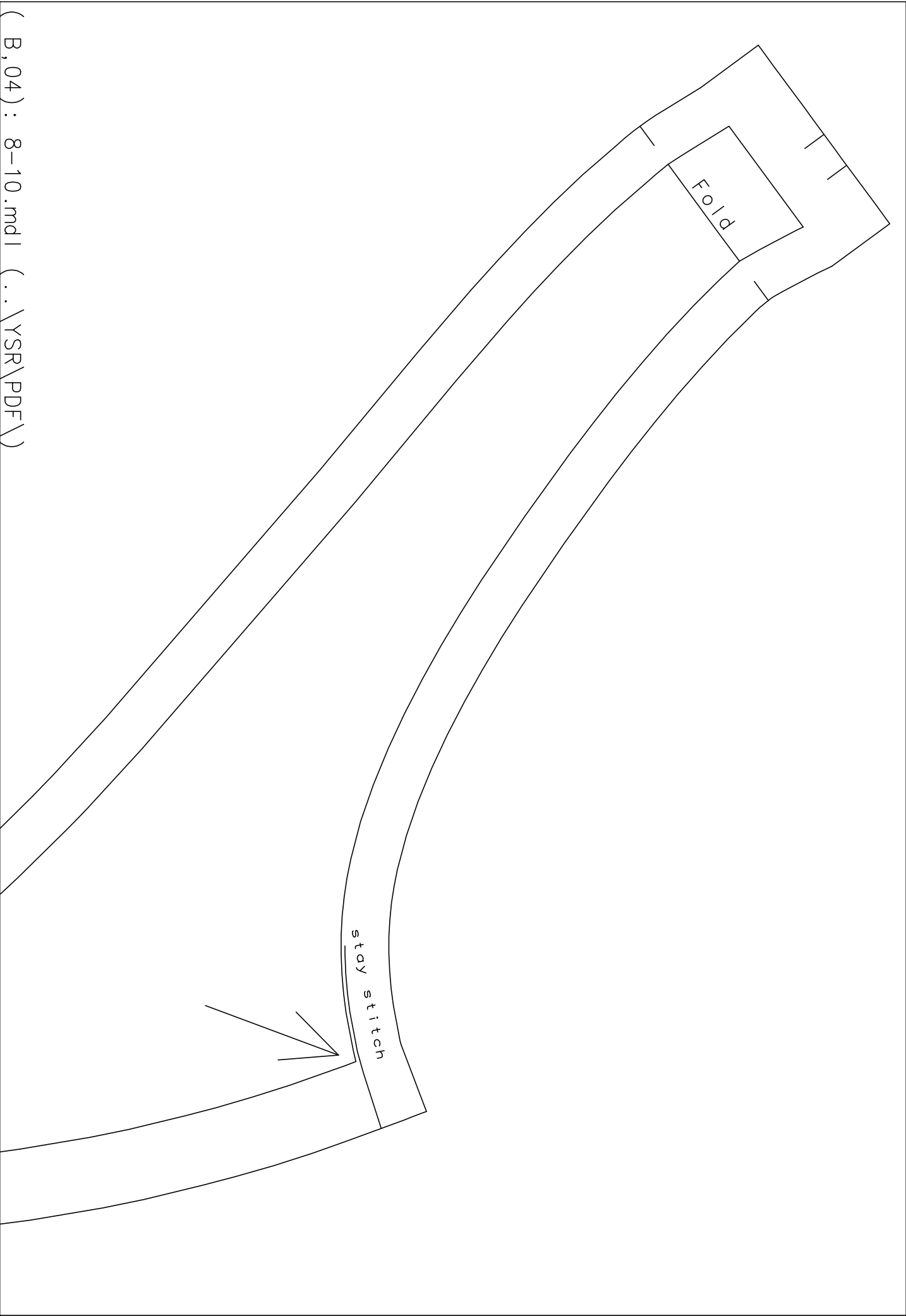
fold

2

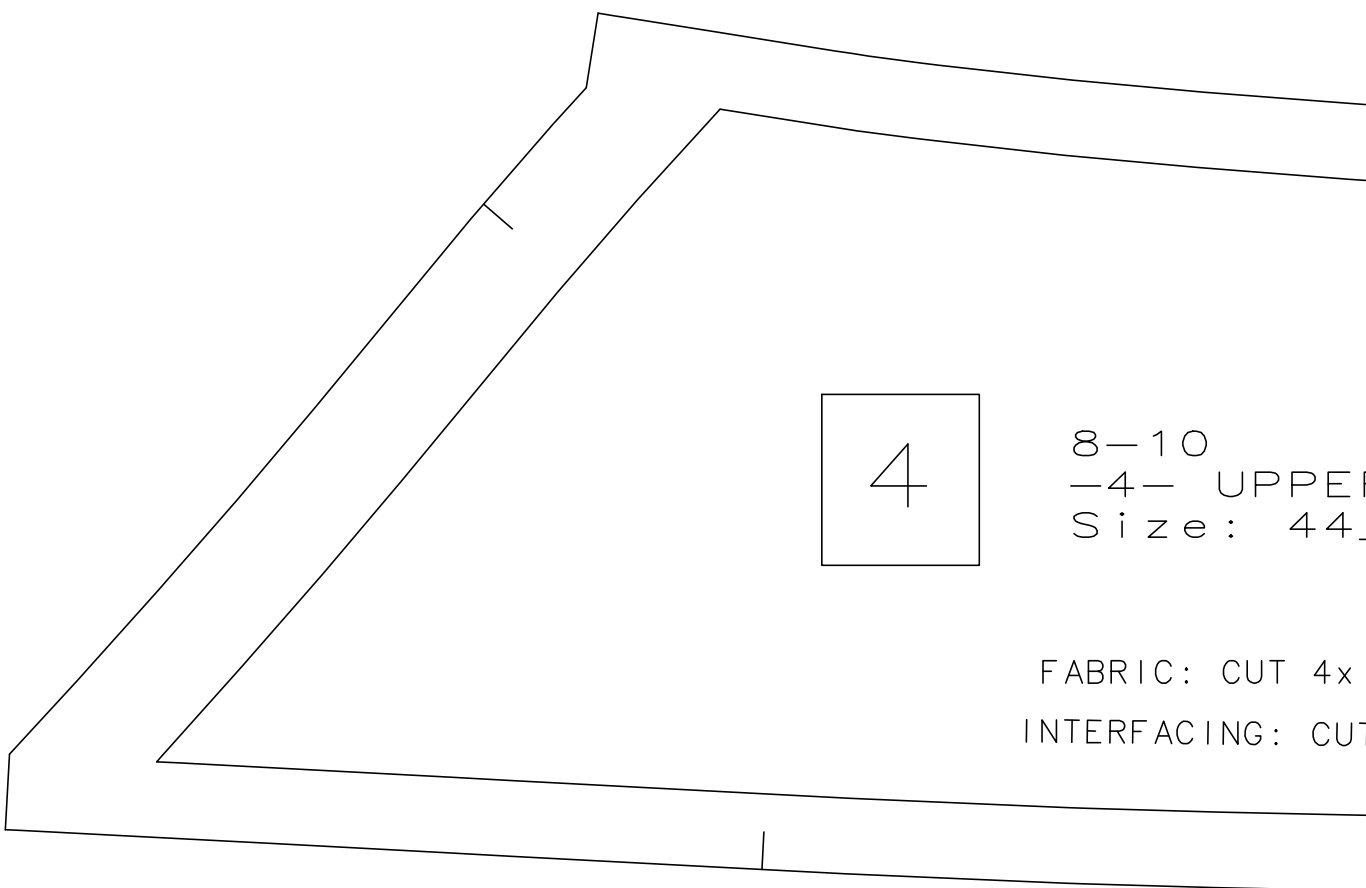
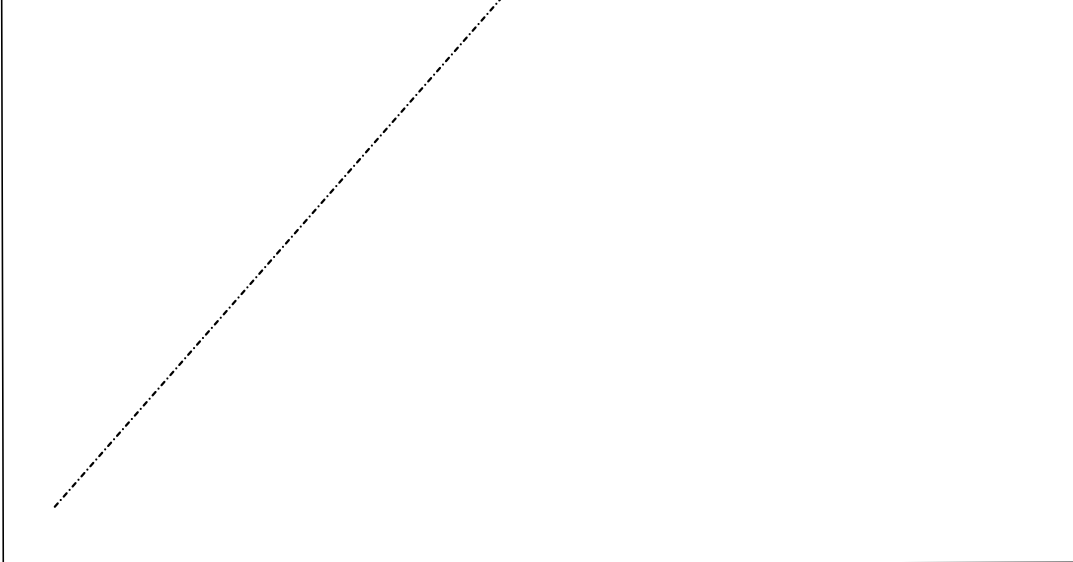
8-10
-2- UPPER FRONT
Size: 44_US16

FABRIC: CUT 1x ON FOLD
INTERFACING: CUT 1x ON FOLD





(B, 04) : 8-10.mdl (.. \YSR\PDF\)

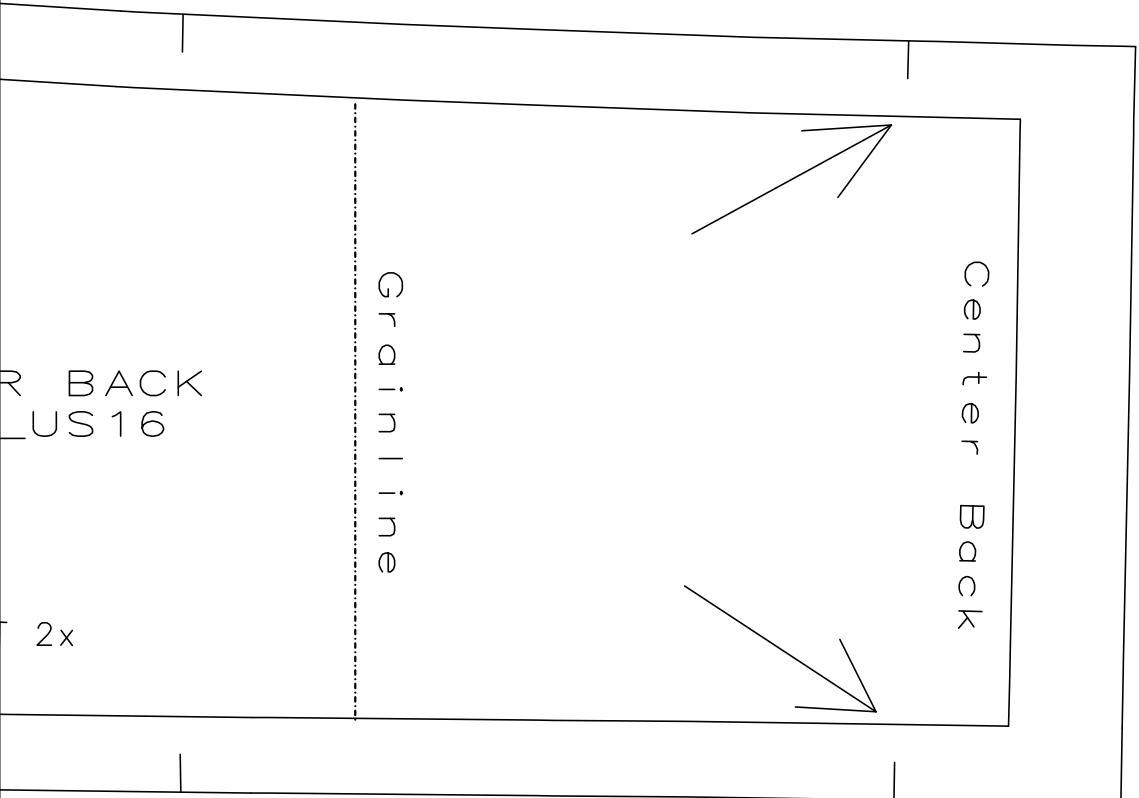


4

8-10
-4- UPPER
Size: 44

FABRIC: CUT 4x
INTERFACING: CUT

(B,06) : 8-10.mdl (..\YSR\PDF\)



R BACK
US 16

2x

Grainline

Center Back

8-10
-6a OUT STRAP B
Size: 44_US16

8-10 STR
-7- STR
Size: 4

Hand
Stitch
Fold

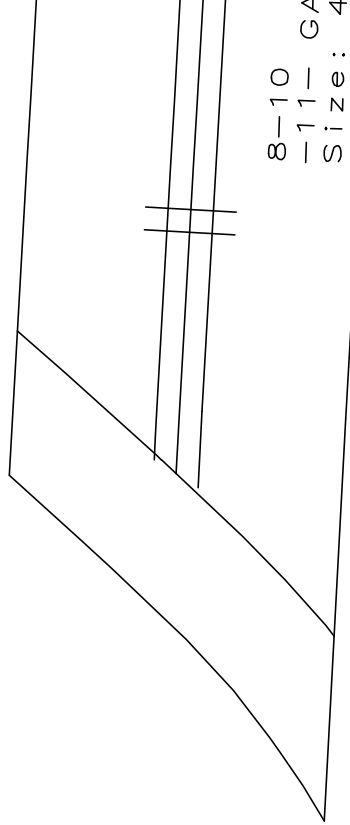
center front fold

2a

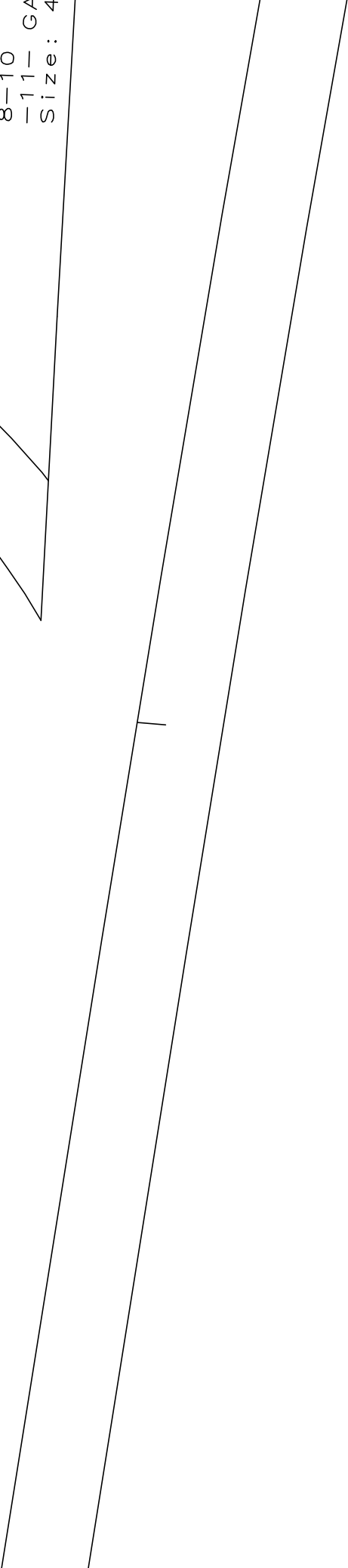
FABRIC: CUT 1x ON FOLD

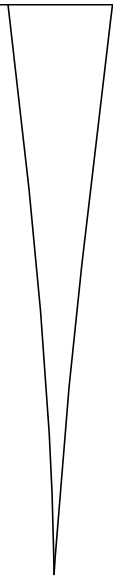
8-10
-2a-
Size: U

(B,08) : 8-10.mdl (..\YSR\PDF\)

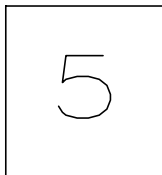


8-10
-11- GA
Size: 4





grainline



8-10
-5- BACK
Size : 44_US16

FABRIC : CUT 2x

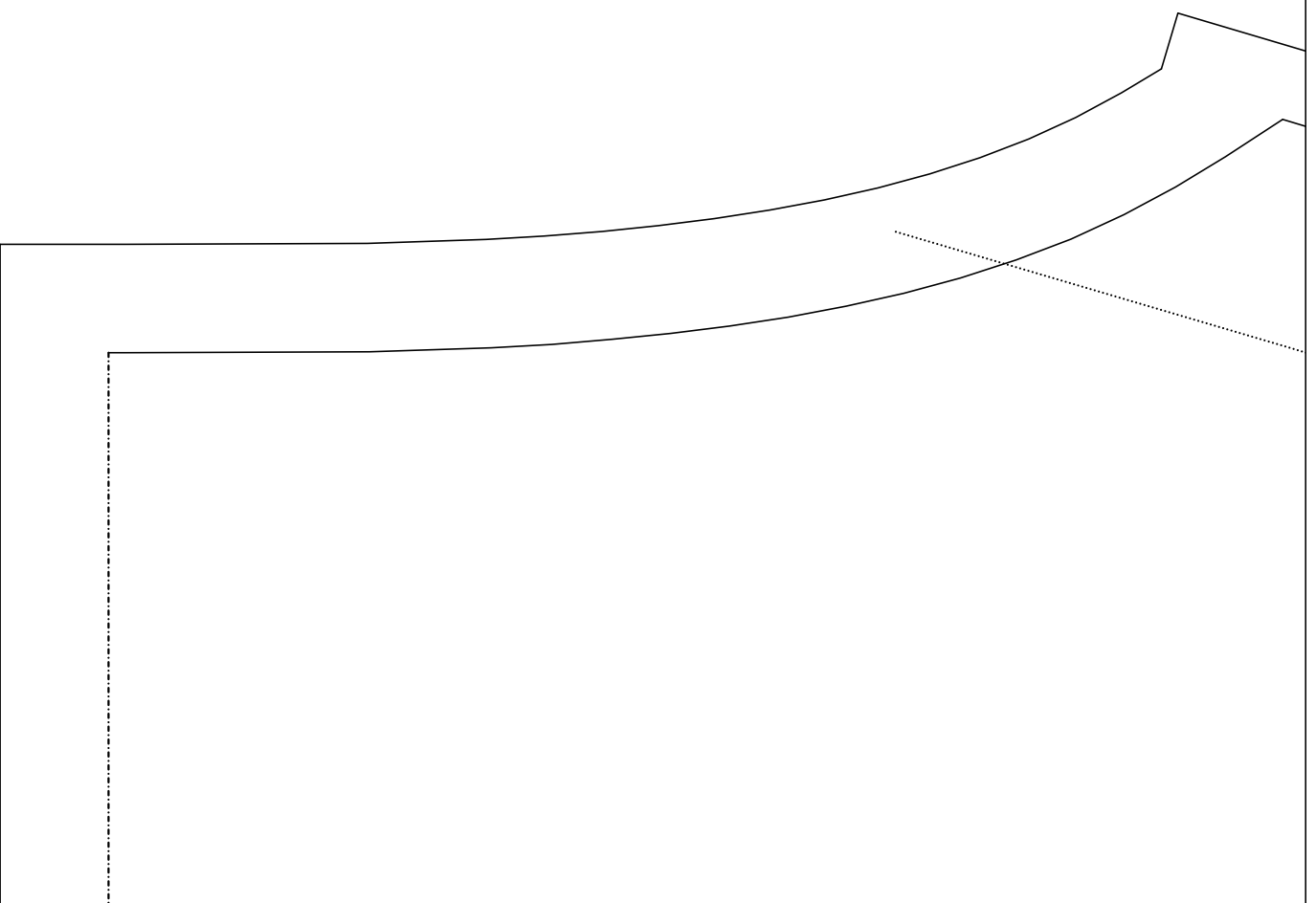
LINING : CUT 2x

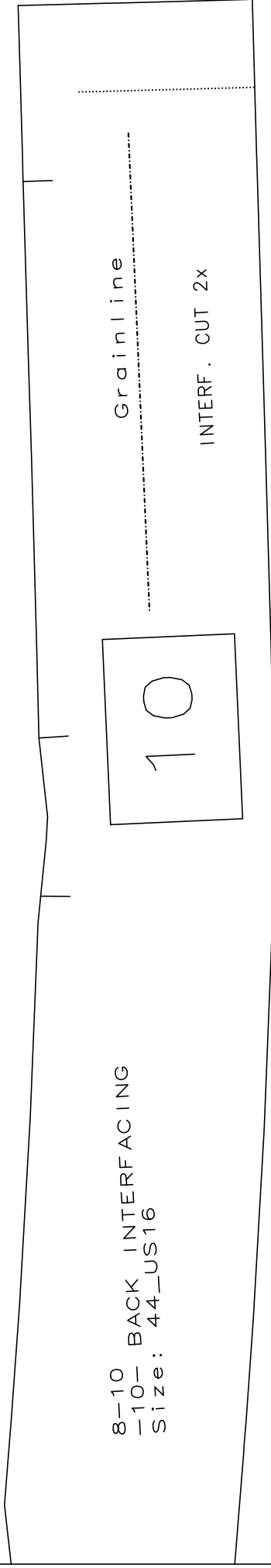
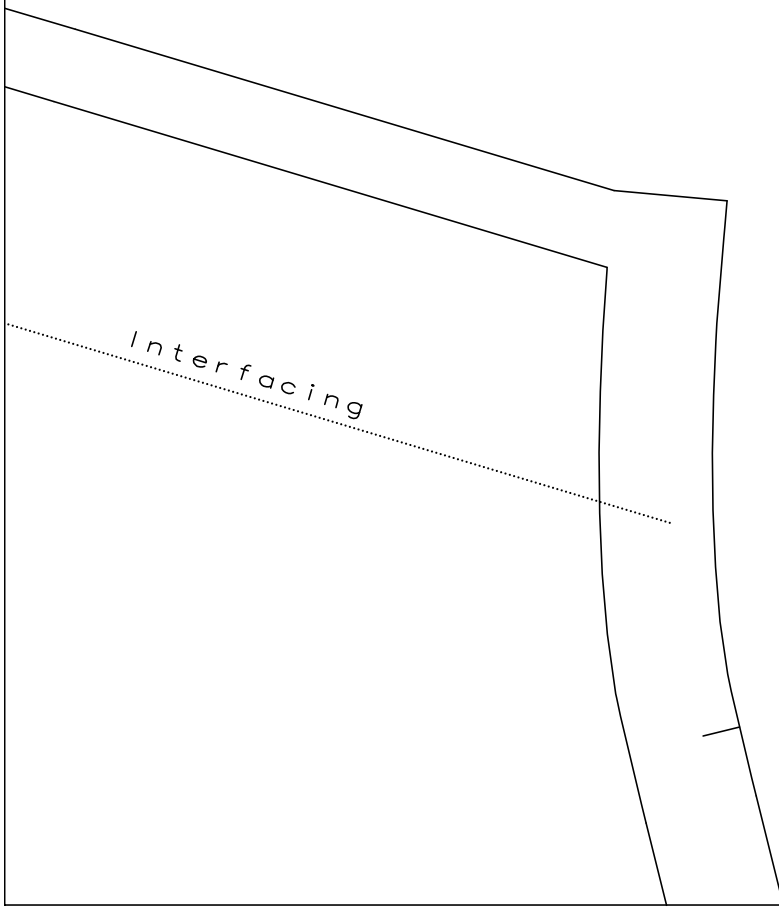
|

z i p p e r

(B, 10) : 8-10.mdl (.. \YSR\PDF\)

(c, 01) : 8-10.mdl (.. \YSR\PDF \)





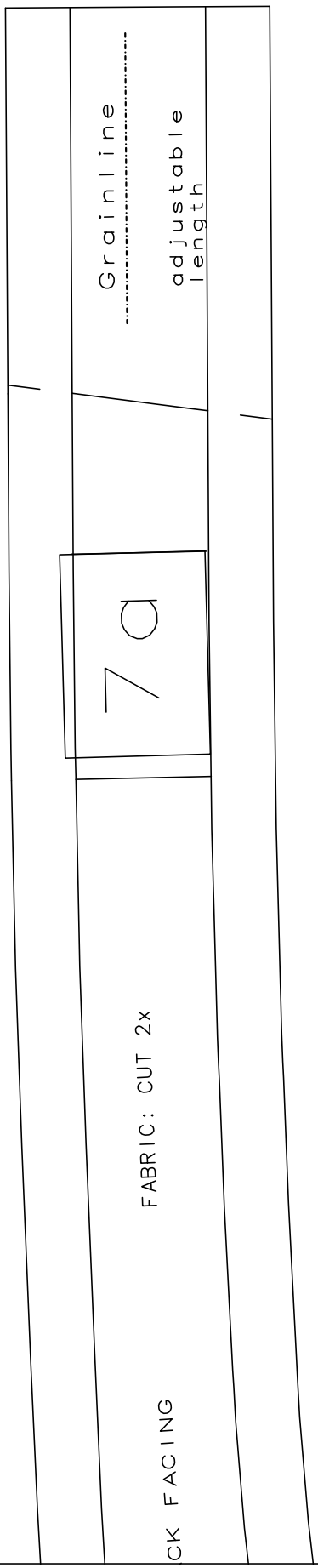
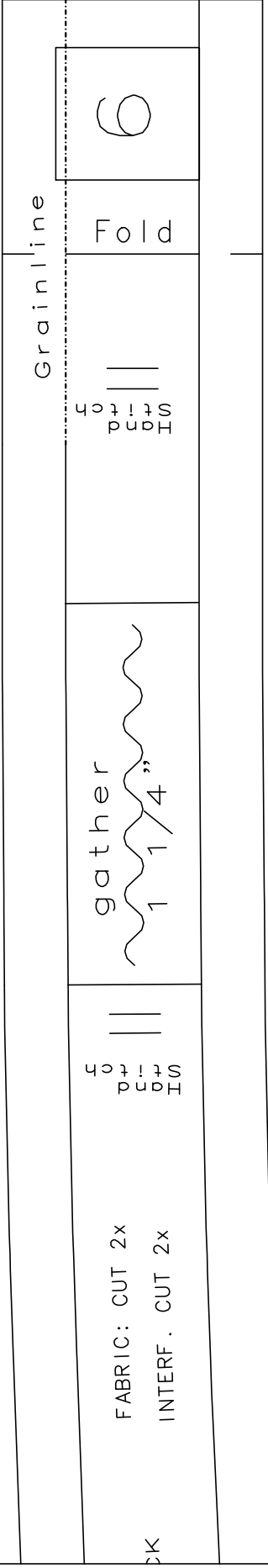
8-10 BACK INTERFACING
Size: 44_US16

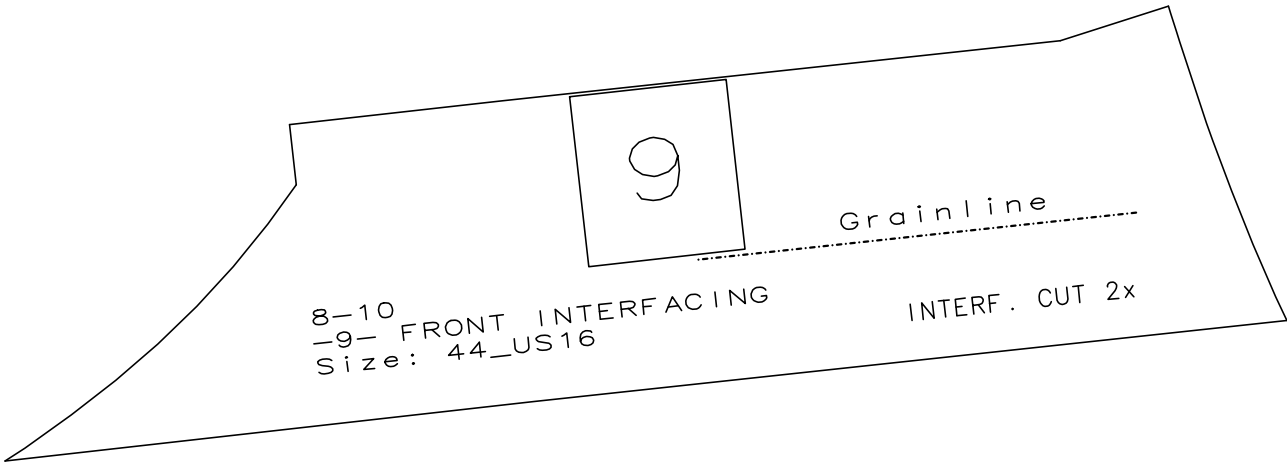
Grainline

INTERF. CUT 2x

10

Interfacing

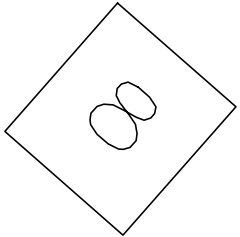




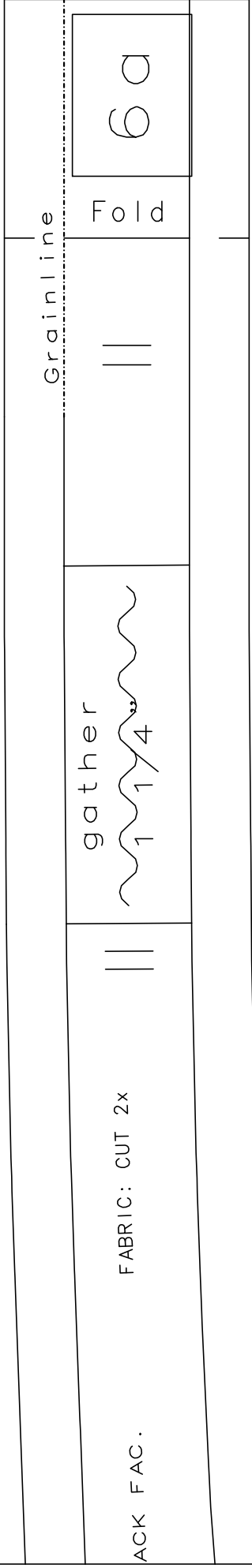
FABRIC: C

(0,06) : 8-10.mdl (..\YSR\PDF\)

Grainline

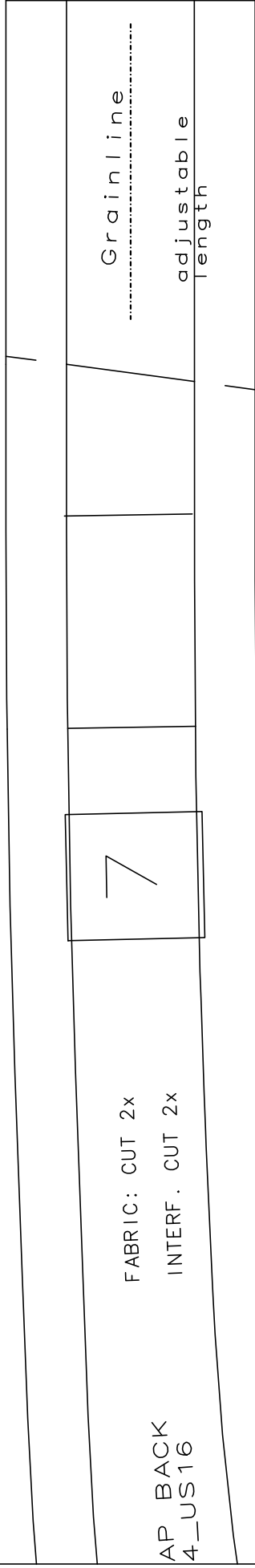


Size: 8-10
44-US16
ROUGH CUT BRA
CUT 2+



FABRIC: CUT 2x

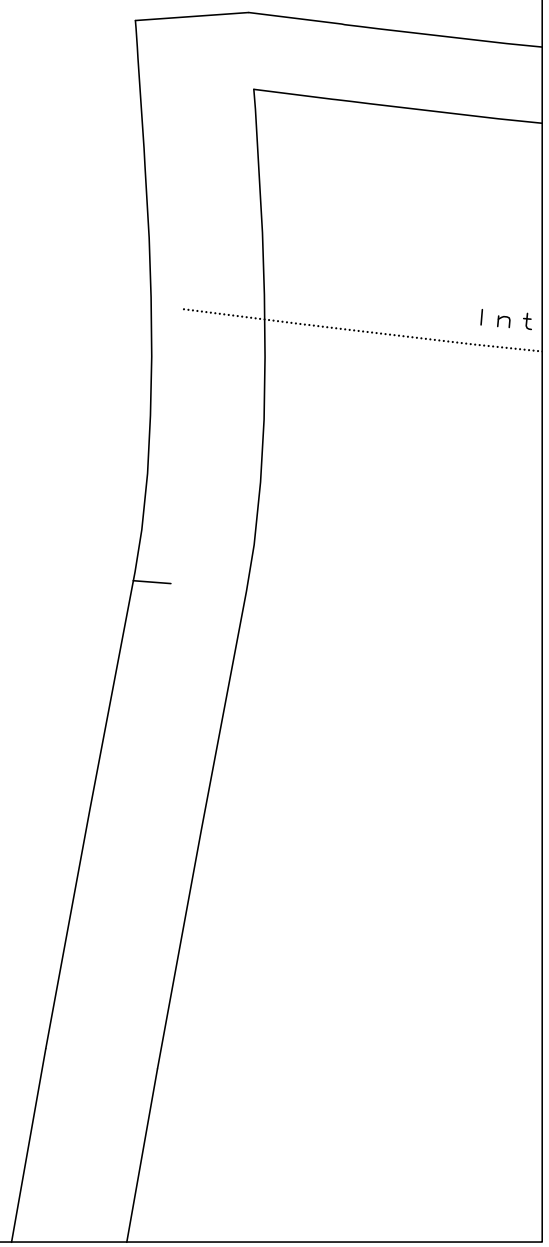
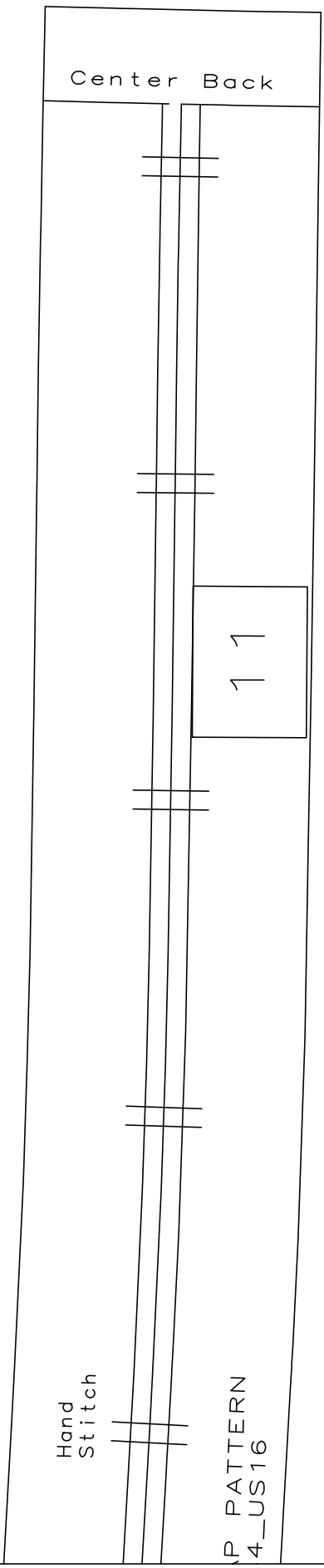
ACK FAC.



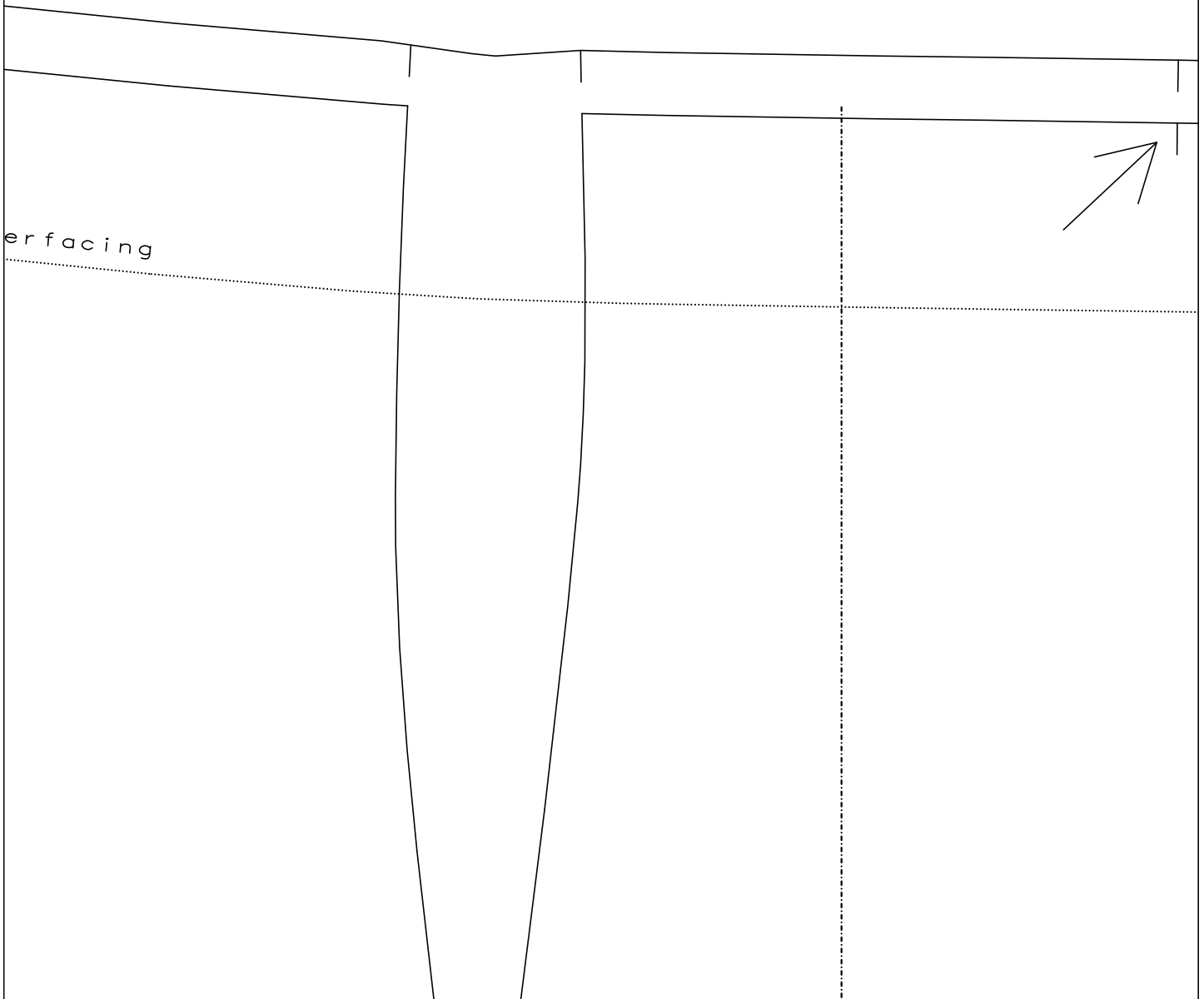
FABRIC: CUT 2x

INTERF. CUT 2x

AP BACK
4_US16



(c, 09) : 8-10.mdi (.. \YSR\PDF \)



(c, 10) : 8-10.mdl (.. \YSR\PDF\)

