



AMERSON UNDIE

FROM

MADALYNNE



description

Ruffled and cheeky, Amerson is the perfect undie to wear underneath a sun dress, a breezy skirt, or any other free flowing garment. With only two pattern pieces and minimal supplies needed to make, Amerson is a sweet lingerie staple.

supplies

1/2 yard of 45-60" light to medium weight fabric
2-3 yards 1/4" elastic
1 rosette (optional)
sewing machine with zig zag stitch

recommended fabrics

SELF: light to medium weight woven fabric such as cotton, poplin, pique, batiste, seersucker, or eyelet

CROTCH LINING: plain cotton jersey

notes

Prewash fabric to remove starches and sizing unless stated otherwise

All pattern pieces include 1/2" seam allowances

Directions state to press seams open and finish seam allowances together (as one ply) but for cleaner and nicer appearance on interior, either trim seam allowances to 1/4" before finishing or sew with french seams

After sewing seam, first press seam flat and then press seams open to avoid puckering

For a clean finish, finish seams together using a zigzag stitch or overlock stitch

There are no notches due to simplicity of pattern

Crotch lining is group graded to maintain integrity of pattern shape

Pattern can be printed on letter or A4 paper

Ensure to print with NO SCALING

FOR PERSONAL USE ONLY
all rights reserved

AMERSON UNDIE

FROM

MADALYNNE

the cool sewing and patternmaking blog
www.madalynne.com

MEASUREMENT CHART

	DROP WAIST	HIP
x-small	28"	35"
small	29"	36"
medium	30"	37"
large	31.5"	38.5"
x-large	33"	40"

FINISHED MEASUREMENTS

	WAIST	LEG OPENING
x-small	11 1/2"	9 1/2"
small	12 1/2"	10 1/4"
medium	13 1/2"	11"
large	15"	12"
x-large	16 1/2"	13"

CONSTRUCTION

1

With right sides together, sew front and back panels together along CF and CB

2

Press seams open and finish seam allowances TOGETHER using a zig zag or overlock stitch

3

Sew front and back panels together at side seams and crotch seam

4

Press seams open and finish seam allowances TOGETHER using a zig zag or overlock stitch

5

Finish waist and leg opening with 1/4" double turnback (see sketch)

6

Using CUT ELASTIC chart, cut waist and leg elastic to the appropriate lengths

7

Overlap waist and leg opening 1/2" and secure with a box stitch (see sketch)

8

Place elastic 1/4" from waist edge and attach using a zigzag stitch (stitch width = 4.5 / stitch length = 1.0)

9

Repeat step 8 to sew elastic at leg opening

10

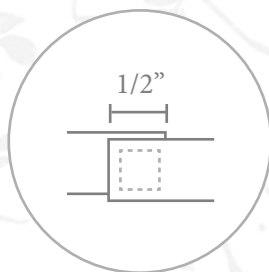
Finish crotch lining with zigzag or overlock stitch. Center crotch lining over crotch seam and attach using straight stitch machine tacks. Attach to CF/CB seam allowances and elastic at crotch seam (see sketch on Technical Sketch page)

11

OPTIONAL: Attach rosette at CF by hand tacking through all plys

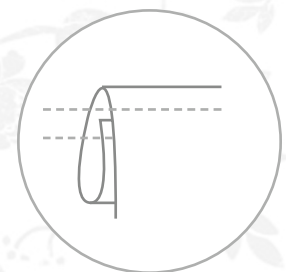
SKETCHES

SKETCH FOR STEP 7
OVERLAPPING ELASTIC



SKETCH FOR STEP 5
1/4" DOUBLE TURNBACK

First, turn edge back 1/4" and stitch close to edge. Then turn edge back and stitch 1/4" from edge.



TECHNICAL SKETCH

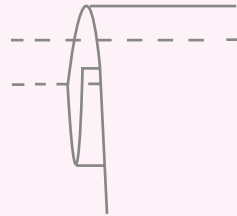
rosette hand tacked at CF
and sewn through all plys/layers
of fabric



zigzag stitch width = 4.5
zigzag stitch length = 1.0

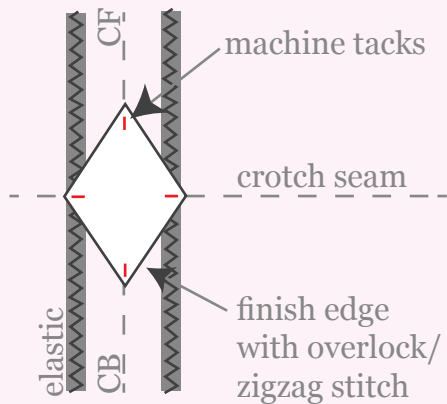
WAIST & LEG OPENING FINISH

1/4" double turnback



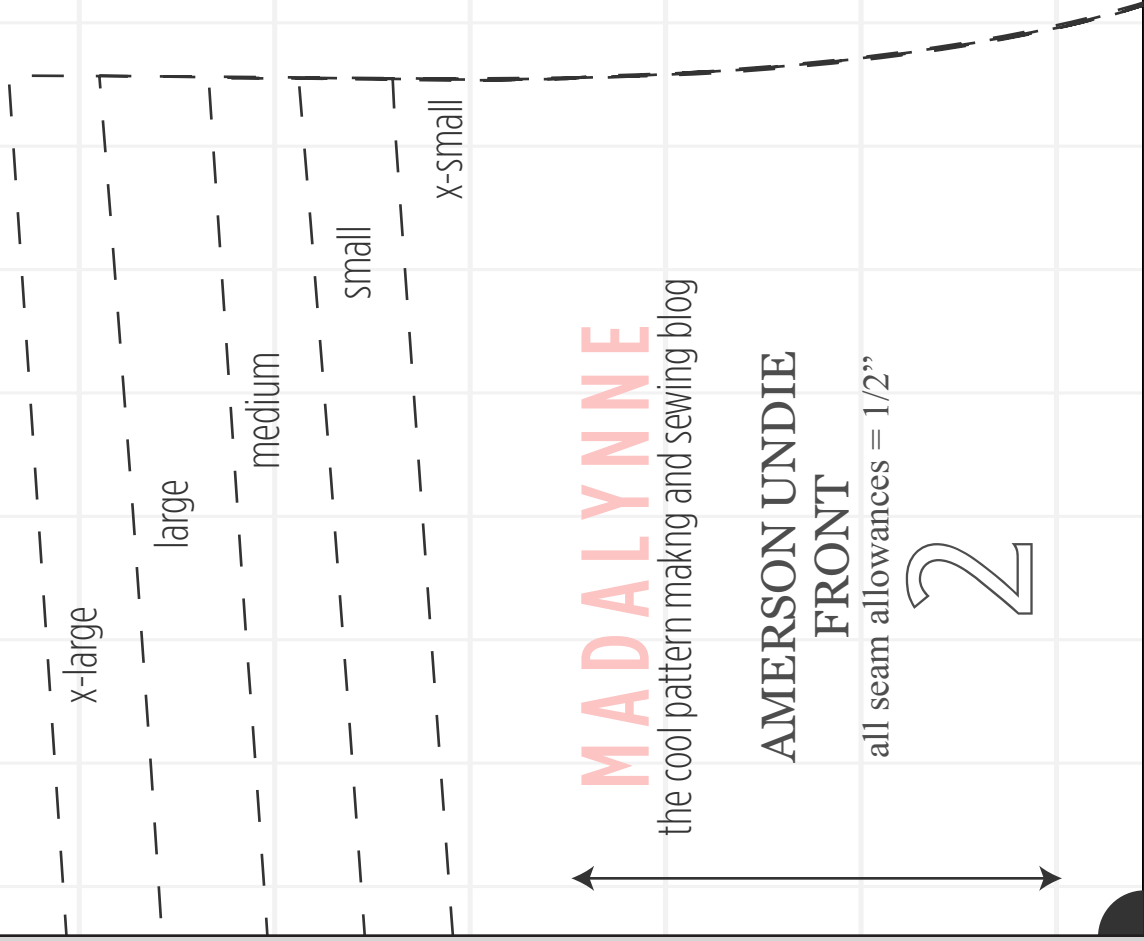
Added side
seams to reduce
yield/yardage

CROTCH LINING



1/4" elastic at waist and
leg opening

1



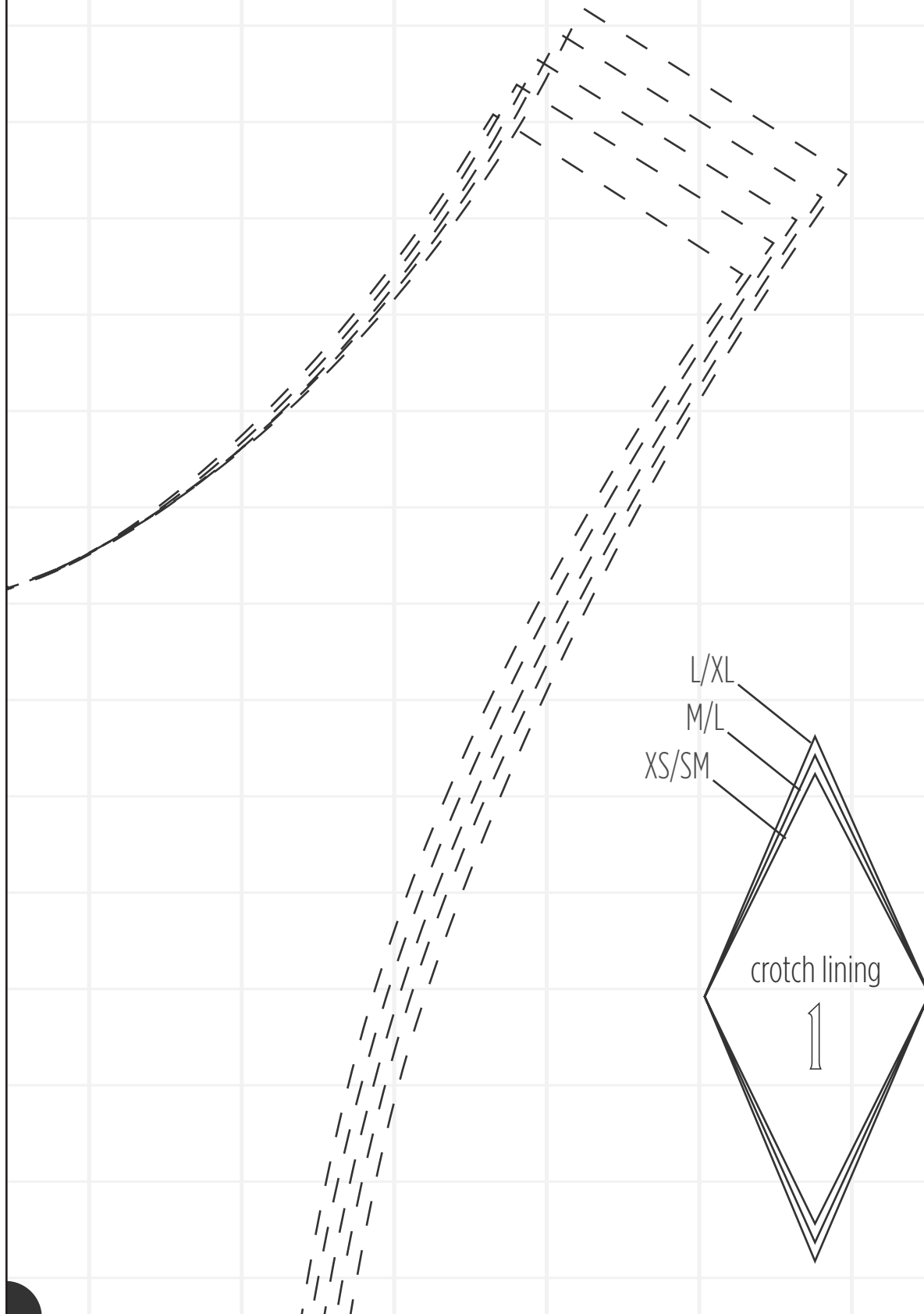
MADALYNE
the cool pattern making and sewing blog

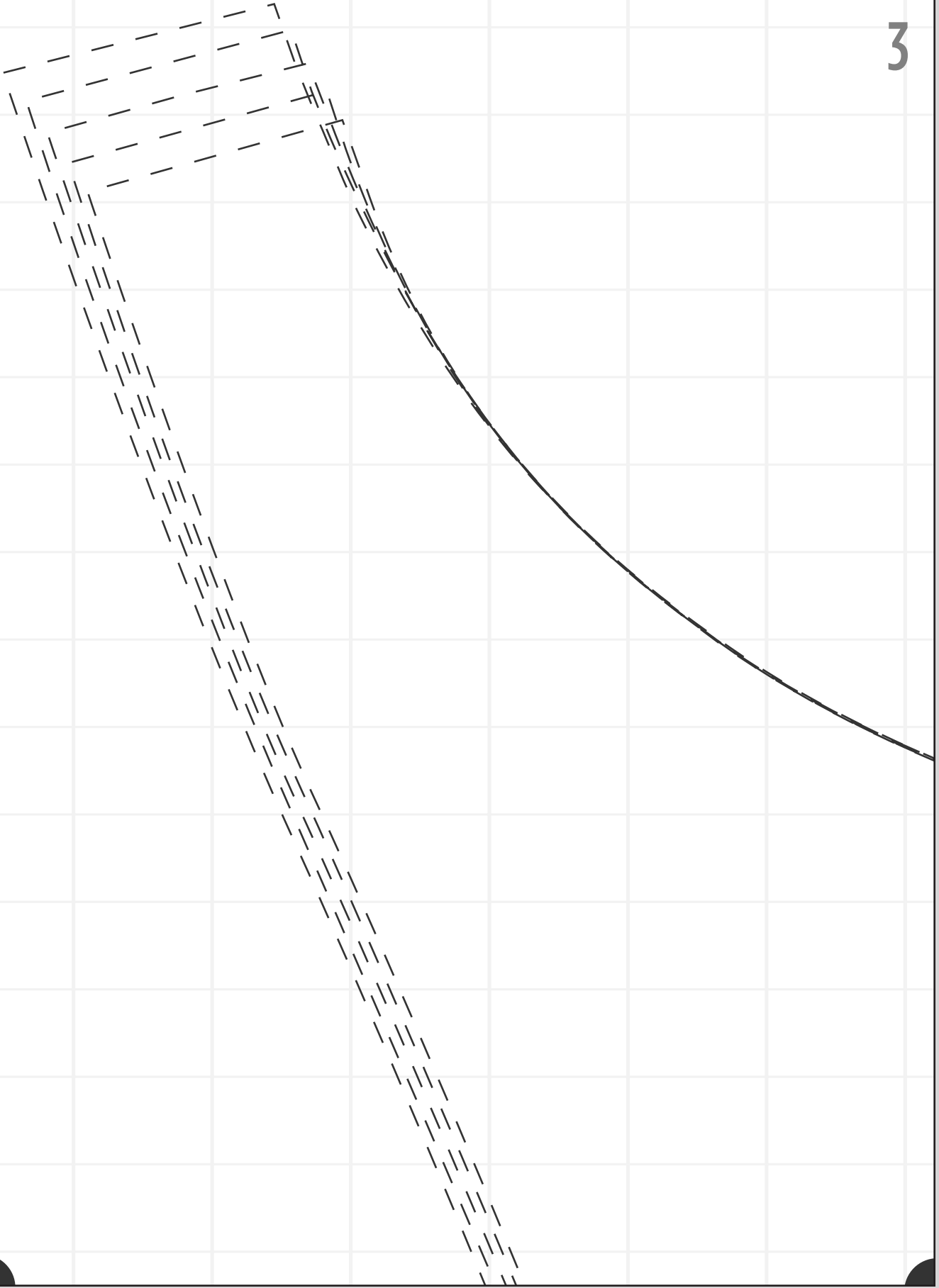
**AMERSON UNDIE
FRONT**

all seam allowances = 1/2"

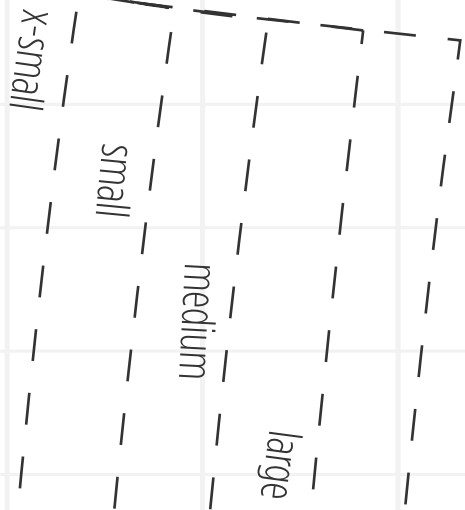
2

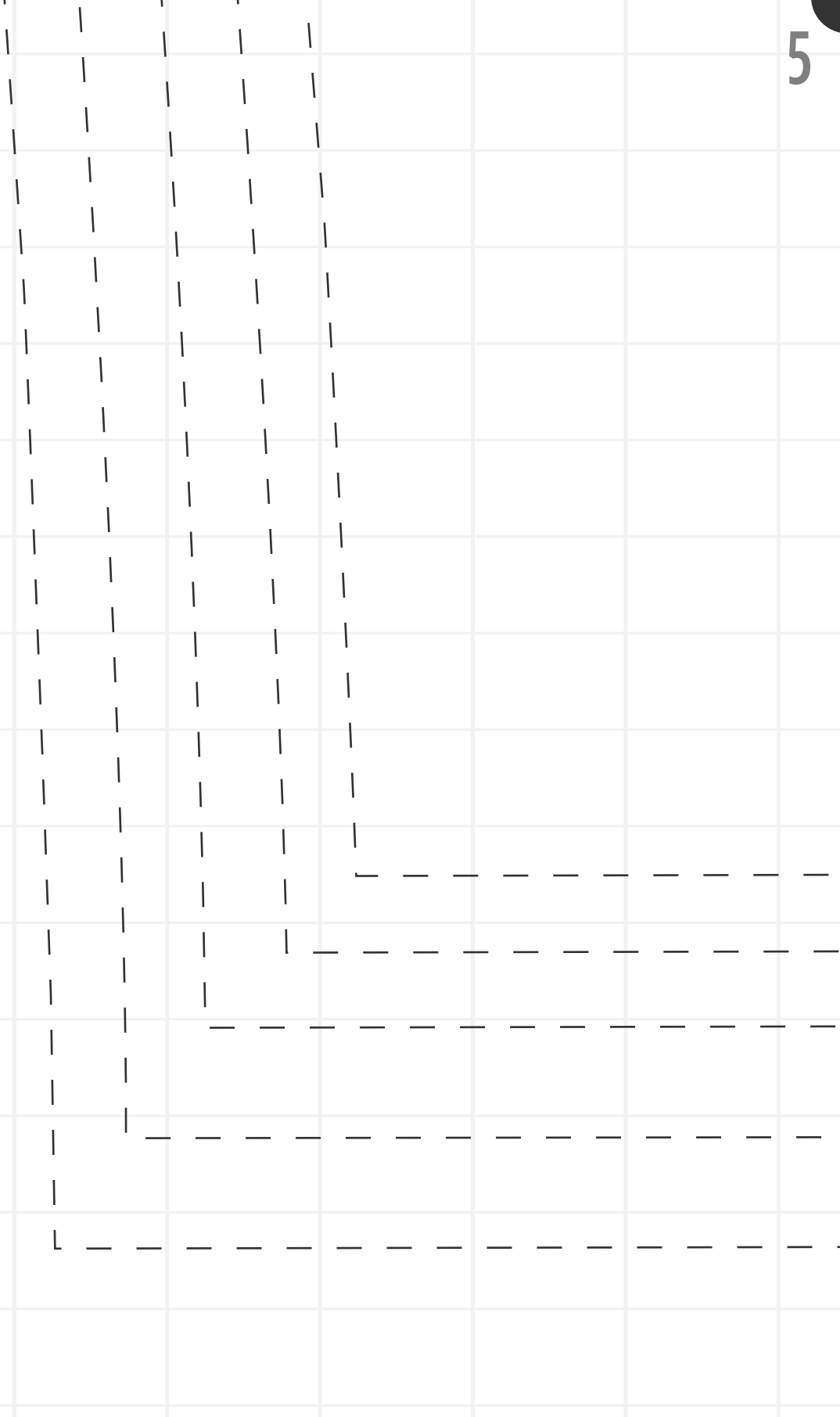
2



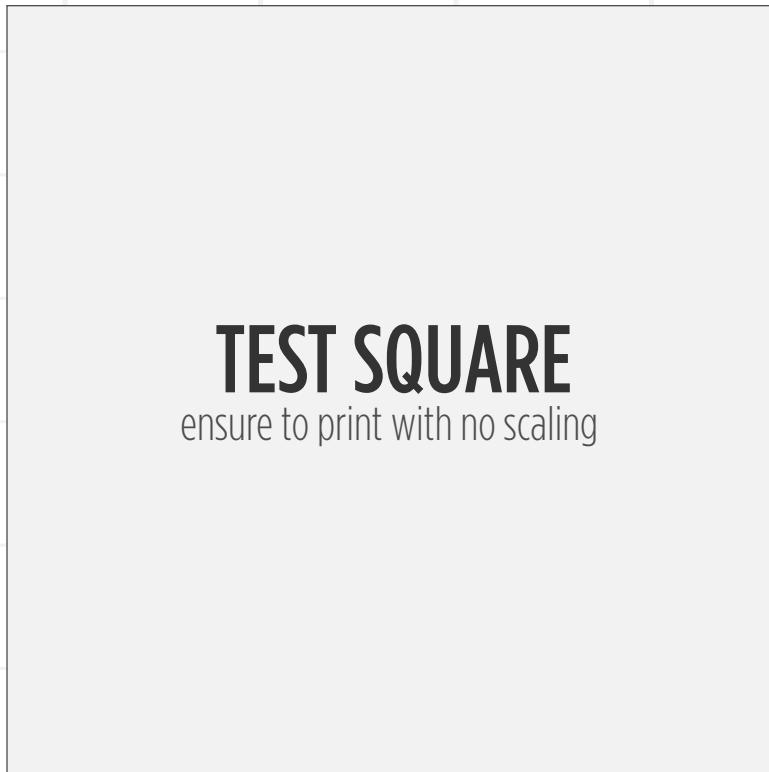


4



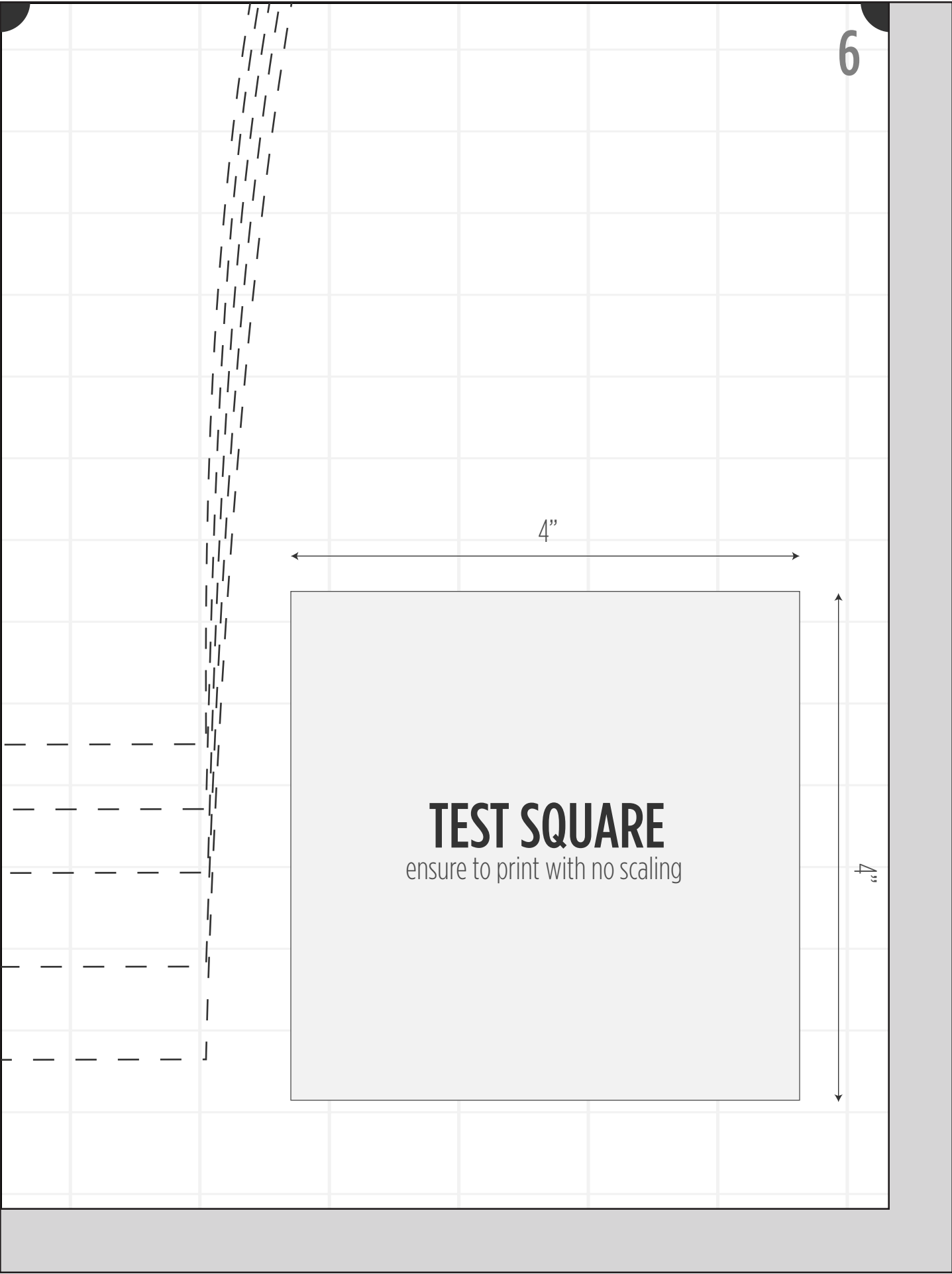


4"



TEST SQUARE
ensure to print with no scaling

4"



CUT ELASTIC LENGTH

SIZE	WAIST OPENING	LEG OPENING
x-small	23"	19"
small	24"	19 3/4"
medium	25"	20 1/2"
large	26 1/2"	21 1/2"
x-large	28"	22 1/2"

x-large

MADALYNNÉ
the cool pattern making and sewing blog

**AMERSON UNDIE
BACK**

all seam allowances = 1/2"





KUDOS

To Antonella Avogrado for drawing the beautiful illustrations on page 1
www.stardustsoul.blogspot.com