



whisk 'em
whiskem.com

Alcoy Dress

Sizes XXS-4XL



Appropriate Sewing Level

Confident Beginner

If you've never sewn with knits before, don't be intimidated! This project is quite simple and a great way to learn about this fabric staple.

Description

The Alcoy Dress is a stretchy knit dress with a figure-hugging fit and raglan-style sleeves. This super simple silhouette is a breeze to whip up and so flattering!

Materials

- Appropriate yardage of knit fabric with at least 30% stretch. Recommended Fabrics: jersey, spandex, interlock, etc. If you're a knit newbie, check out [this amazing post](#) by Miranda of One Little Minute. It'll tell you everything you need to know about knits!
- Matching thread

Sizing

The bust and hip areas of the raglan dress are designed with negative ease (smaller than the body), while the waist has slightly more ease (closer to the same size as the body); this means that the dress will hug your bust and hips while just skimming over your waist. I designed it this way to accent your curves while camouflaging any belly imperfections! Try sizing up one size if you're looking for a more relaxed, everyday look.



Additional Instructions

Seam Allowances: $\frac{3}{8}$ " (1 cm), unless otherwise noted

Hem Allowance: Hem allowance is $\frac{1}{2}$ " (1.2 cm), unless otherwise noted

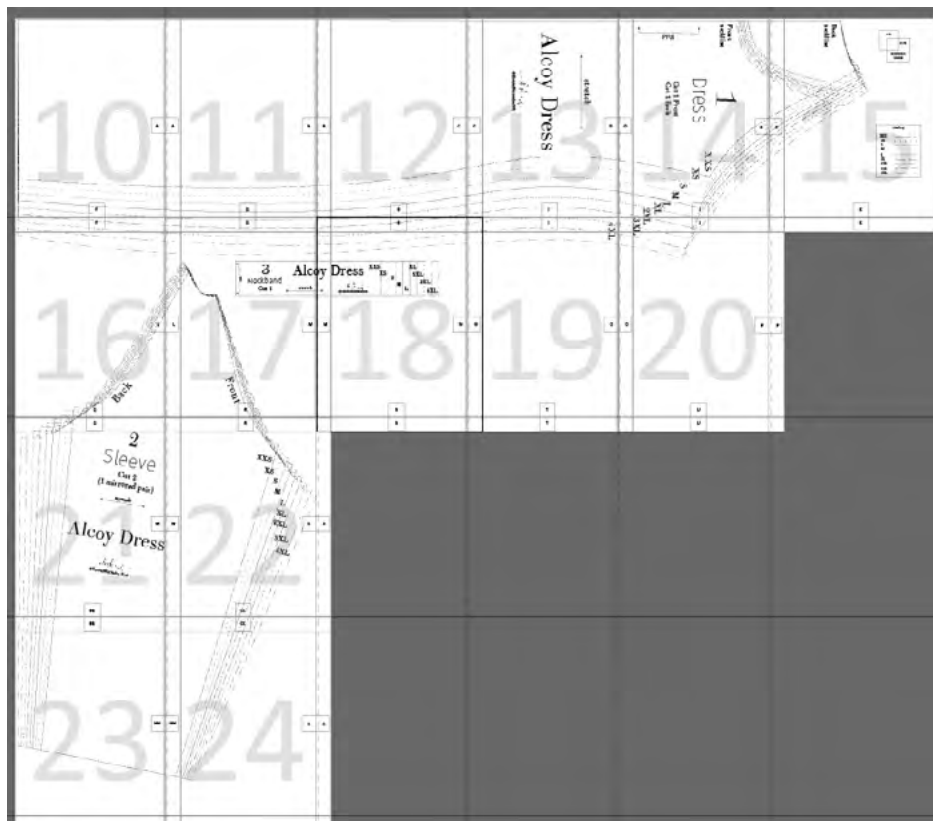
Finish Raw Edges: Serge or zig-zag raw edges of pattern piece before beginning to sew

Press: Iron seam allowances open or to one side and then finish raw edges

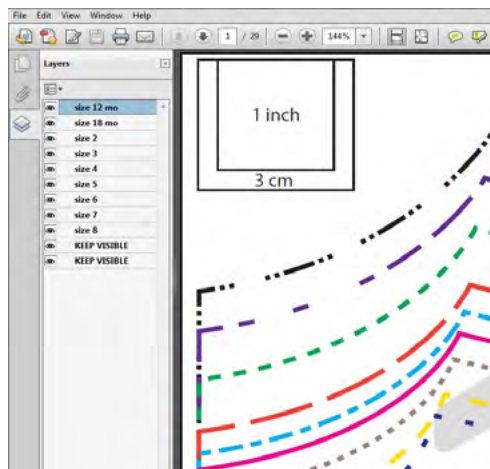
RST: Right sides together

Hemming Knits: For sleeves and bottom of skirt, fold raw edge under $\frac{1}{2}$ " (1.2 cm) and press. Using a coverlock machine or double needle, stitch hem on right side of fabric, approximately $\frac{1}{4}$ " (.6cm) from bottom fold. Press well.

Topstitching: Visible stitching along neckline in order to keep binding and seam allowance lying flat. Can be done in a matching thread or in a contrast thread to add visual interest.



Pattern Printing and Piecing Instructions

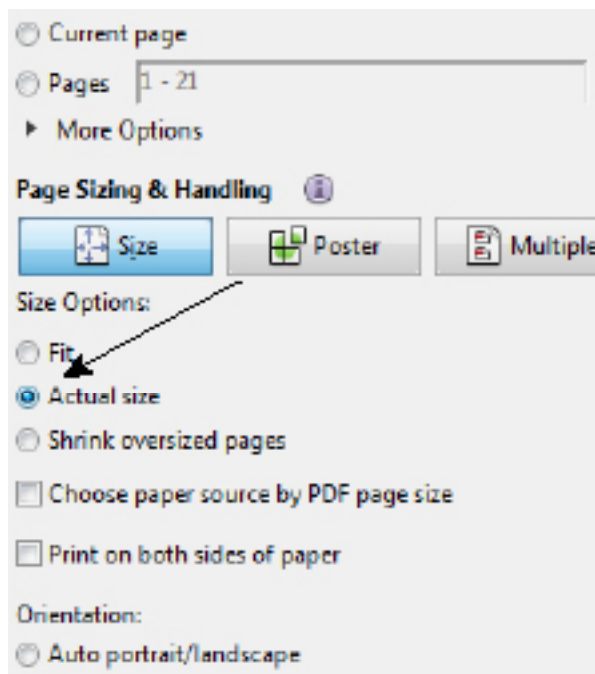


This pattern is laid out on layered PDF tiles which means that you can choose to print only the size(s) you choose. After opening the pattern in Adobe Reader (not in a browser!), open the “layers” menu on the left (the icon looks like a stack of 3 papers) and then turn each size on or off by clicking the eyeball icon next to each size. The bottom two layers include guides for both 8.5”x11” and A4 sized paper. Be sure to leave on whichever layer corresponds to the paper size you are using.

When you’re ready to print, set your printer settings to NOT scale your pattern pieces. Look for the option to print “Actual Size” or uncheck “Fit to Page”. Before printing out all your pattern pieces, I recommend only printing the first pattern page and measuring the 1” (3cm) calibration square to ensure that your printer is not scaling the pattern.

Depending on the size you’re sewing, you may not need to print every page because the smaller sizes do not take up as much room. Be sure to turn on the appropriate layer(s) and scroll through your pattern pages to avoid printing blank pages.

This pattern is also designed with NO-TRIM pages which means that you do not need to cut off your margins before taping together. Simply overlap the margin of one page over the margin of the neighboring page, matching up letter markings, and tape securely (see overview on page 4). Then trace or cut out your pattern pieces.



TERMS OF USE

All pictures, diagrams, charts and text are the property of Bonnie Wiscombe and the blog Whiskem.com. All rights are reserved. Please do not share the contents of this pattern in any way; copying or emailing this pattern for another person’s use is a copyright violation.

For personal use only. Please do not sell garments made from this pattern.

THANK YOU for respecting my time and effort!

Body Measurements

Size	Bust	Waist	Hip
XXS	32" (80 cm)	24" (60 cm)	33" (84 cm)
XS	33" (84 cm)	25" (64 cm)	35" (88 cm)
S	35" (88 cm)	27" (68 cm)	36" (92 cm)
M	36" (92 cm)	28" (72 cm)	38" (96 cm)
L	38" (98 cm)	30" (76 cm)	39" (100 cm)
XL	41" (105 cm)	31" (80 cm)	41" (104 cm)
2XL	44" (112 cm)	33" (84 cm)	43" (108 cm)
3XL	46" (118 cm)	35" (88 cm)	44" (112 cm)
4XL	48" (122 cm)	37" (94 cm)	46" (117 cm)

Finished Garment Measurements

Like many knit garments, the Alcoy Dress is designed with negative ease (i.e. some of the garment's finished measurements are smaller than the body's measurements) in order for it to fit the body snugly. Be sure to use a knit fabric with enough stretch so that the garment will fit over your curves comfortably! (see page 3 for fabric details)

Size	Bust	Waist	Hip
XXS	29" (74 cm)	26" (66 cm)	33" (83 cm)
XS	31" (80 cm)	28" (72 cm)	34" (87 cm)
S	34" (86 cm)	30" (77 cm)	36" (92 cm)
M	36" (91 cm)	32" (82 cm)	38" (96 cm)
L	38" (96 cm)	35" (88 cm)	39" (100 cm)
XL	40" (101 cm)	37" (93 cm)	41" (104 cm)
2XL	43" (108 cm)	39" (98 cm)	43" (108 cm)
3XL	44" (112 cm)	41" (104 cm)	44" (113 cm)
4XL	46" (117 cm)	43" (109 cm)	46" (117 cm)

Fabric Cutting Instructions

When cutting a long, thin pattern such as this dress, it's the most efficient to fold both selvages of your fabric in towards each other, so that they meet in the center. Then you can cut two bodices out, both along the fold, without wasting any fabric!

Don't forget to mark the front and back of your sleeve pieces! These look very similar (but are indeed different) and can easily get mixed up.

Yardage Requirements

<u>Imperial</u>		Required Yardage	<u>Metric</u>	
Size	Fabric Width		Size	Fabric Width
XXS	60/54" 44"	1 ¼ yd (120 cm) 2 yd (180 cm)	XXS	150/135cm 115cm
XS	60/54" 44"	1 ¼ yd (120 cm) 2 yd (180 cm)	XS	150/135cm 115cm
S	60/54" 44"	1 ⅞ yd (170 cm) 1 ⅞ yd (170 cm)	S	150/135cm 115cm
M	60/54" 44"	1 ⅞ yd (170 cm) 1 ⅞ yd (170 cm)	M	150/135cm 115cm
L	60/54" 44"	1 ⅞ yd (170 cm) 1 ⅞ yd (170 cm)	L	150/135cm 115cm
XL	60/54" 44"	1 ⅞ yd (170 cm) 1 ⅞ yd (170 cm)	XL	150/135cm 115cm
2XL	60/54" 44"	1 ⅞ yd (170 cm) 3 ¼ yd (220 cm)	2XL	150/135cm 115cm
3XL	60/54" 44"	1 ⅞ yd (170 cm) 3 ¼ yd (220 cm)	3XL	150/135cm 115cm
4XL	60/54" 44"	1 ⅞ yd (170 cm) 3 ¼ yd (220 cm)	4XL	150/135cm 115cm

Instructions



1

1. Lay one SLEEVE piece on top of dress FRONT, right sides together. Pin sleeve to dress along front shoulder seam. (Be sure you're working with the side of the sleeve labeled "front", it's the side with the shorter point). Stitch together; press well. Repeat with opposite sleeve.



2

2. Stitch the rear shoulder seams by repeating Step 1 with the dress BACK and opposite sides of sleeves (labeled "back"). Press well.



4

3. Hem sleeves by pressing raw edge under $\frac{1}{2}$ " (1.2 cm). Using a double needle, coverstitch or other stretch stitch, sew $\frac{1}{4}$ " (0.6cm) from fold.

4. With dress right sides together, sew your underarm seam and side seam all in one step (from the bottom of the sleeve to the bottom of the dress). Repeat with opposite side of dress. Press both seams well. (If using a serger, tie off threads at sleeve hem).

5. Stitch short ends of your NECKBAND together, right sides together; press well. Press neckband in half lengthwise, wrong sides together.

6. Place 4 pins equidistant along the neckband (marking 4 quarters of the band) and do the same to dress neckline. Pin band to neckline, RST, raw edges even and matching each pin in band to each pin in dress (I always place the neckband seam sewn in step 5 at the center back of dress).



6

7. Baste neckband to neckline, stretching band to fit. Try dress on to make sure neckline lies flat. Stitch together using a stretch stitch or serger. Press neckband away from dress and seam allowance towards dress. You can leave the neckband as is, or topstitch along neckline, close to seam; don't forget to use a stretch stitch again!



8. Press under raw edge of dress and hem the bottom as you did the sleeves in step 3.

VOILA! NICE WORK :)



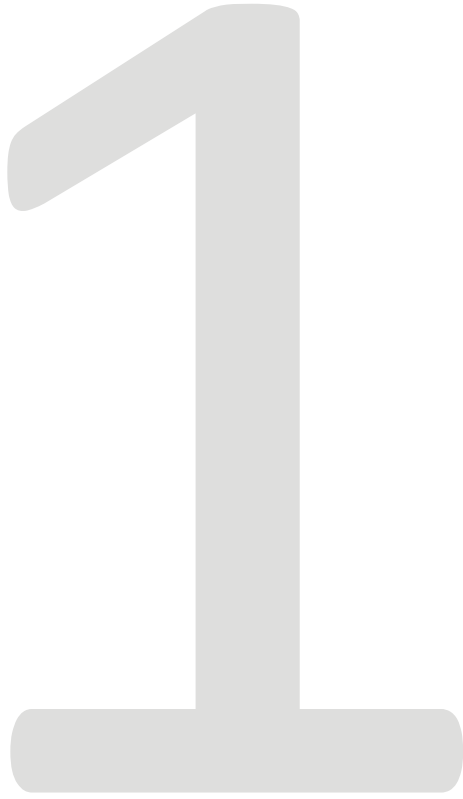
Don't forget to share pictures of your Alcoy Dress on social media using the hashtags #AlcoyDress and #WhiskemPatterns!

10

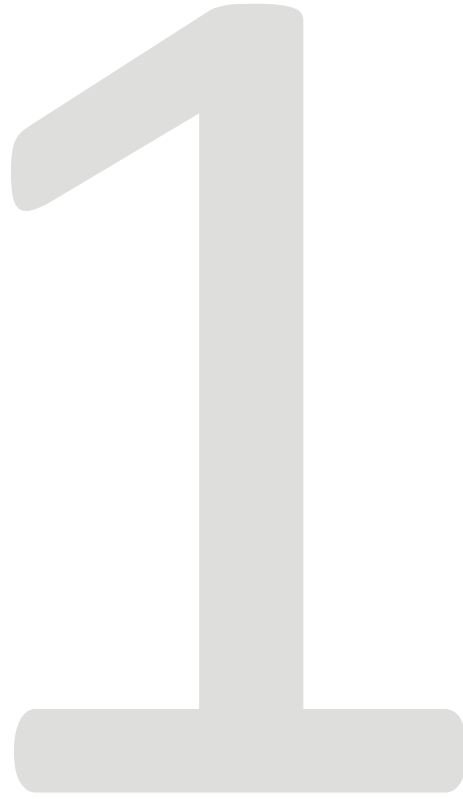
A	A
---	---

F
F

A



B



B

G

G

B

12

C

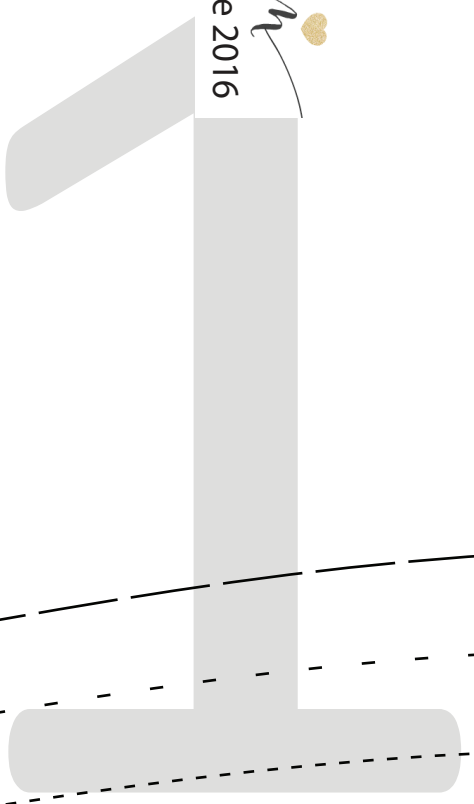
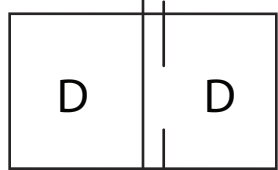
C

H

H

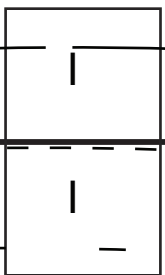
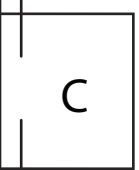
Alcove Dress

stretch

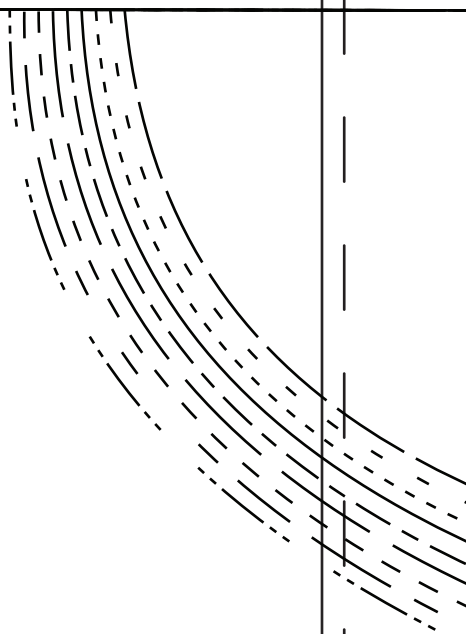


whisk 'em

© Bonnie Wiscombe 2016



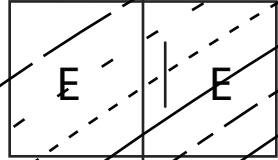
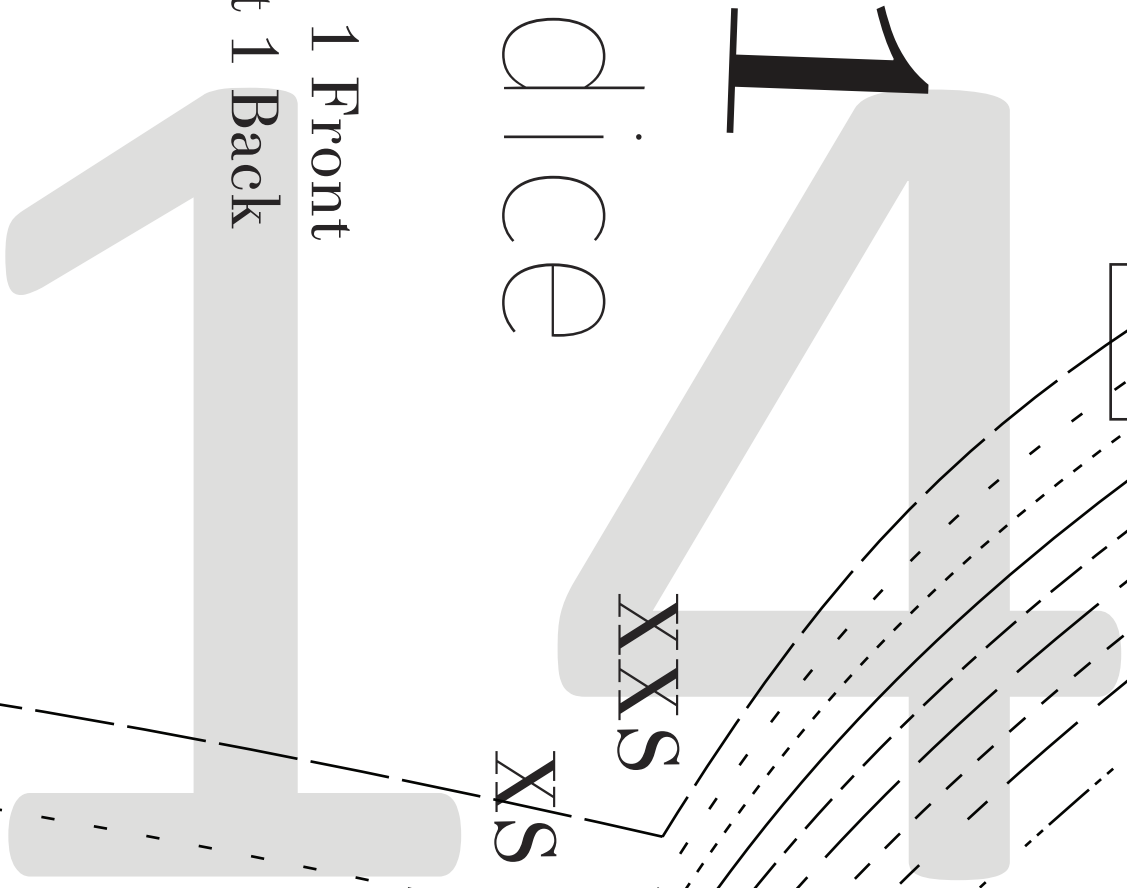
4X



Front
neckline

BODICE

Cut 1 Front
Cut 1 Back



XXS

XS

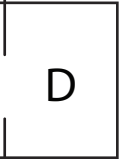
S

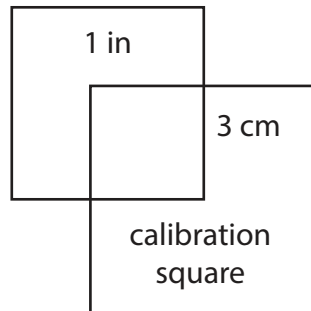
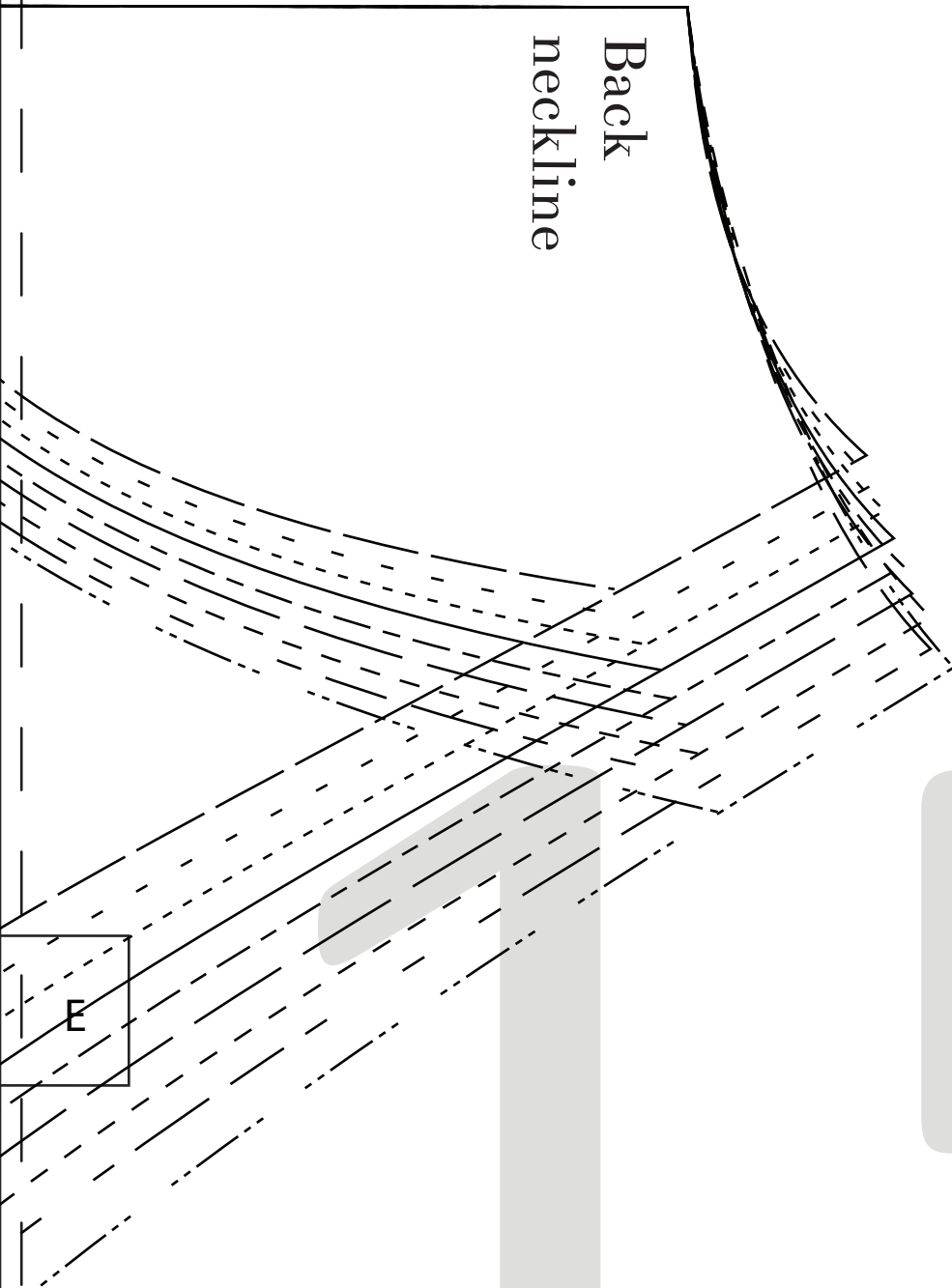
M

L
XL

2XL

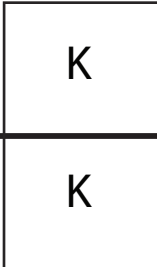
3XL





size key

XXS	— — — — —
XS	- - - - -
S	· · · · ·
M	— — — — —
L	— — — — —
XL	— — — — —
2XL	- - - - -
3XL	· · · · ·
4XL	· · · · ·



F

16

L

L

Back

Q

Q

G

3 **Alcory**
Neckband
Cut 1

Fold

stretch

L

M

M

Front

R

R

H

by Dress

XXS

XS

S

M

L

XL

2XL

3XL

4XL

whisk 'em

© Bonnie Wiscombe 2016

M

18

N

N

S

S

XL

I

N

19

O

O

T

T

3XL

TL

J

O

20

P

P

U

U

Q

2

Sleeve

Cut 2
(1 mirrored pair)

stretch

W

W

Alcroy Dress

whisk 'em
© Bonnie Wiscombe 2016

BB

BB

R

XXS

XS

S

M

L

XL

2XL

3XL

4XL

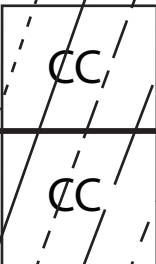
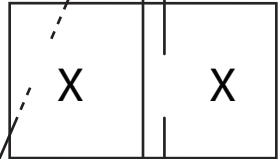
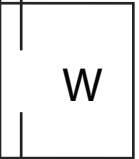
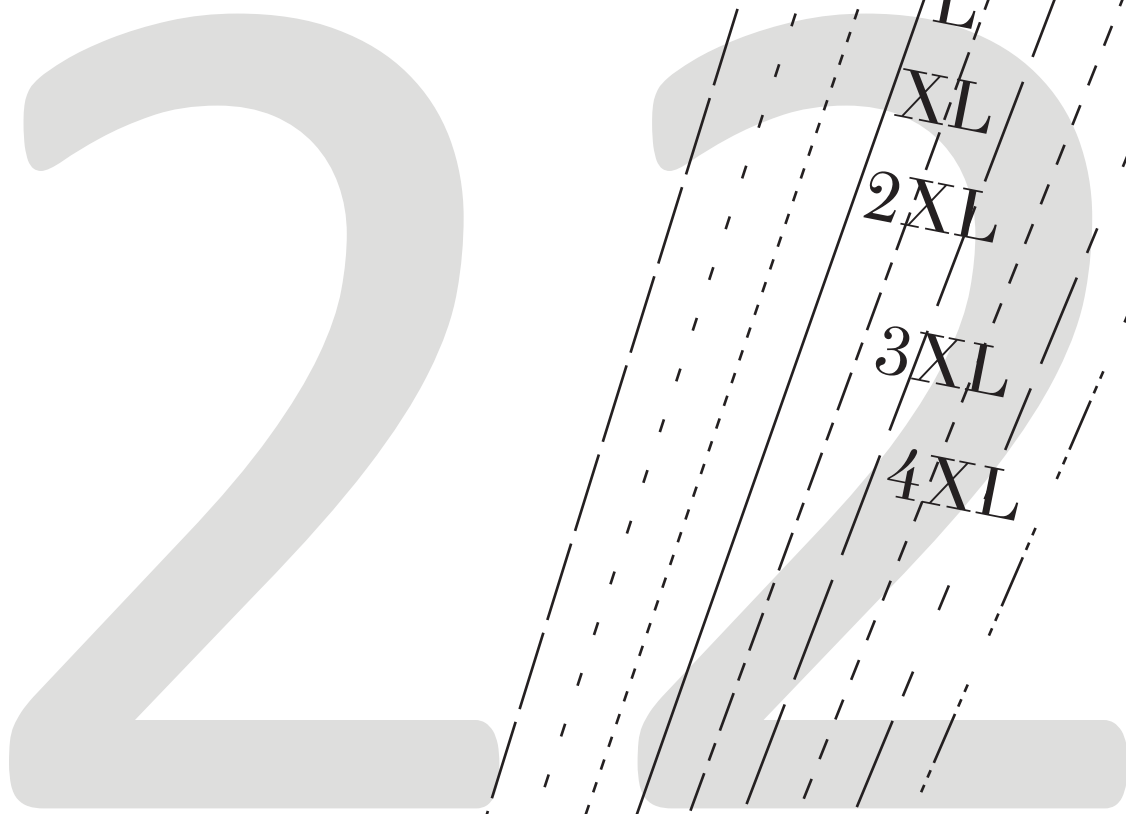
W

X

X

CC

CC



BB

HH

HH

23

CC

HH

|| ||

