

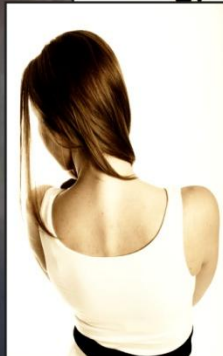
# The Angelina

The perfect shift dress for every occasion

PDF  
Pattern



Design your  
Own with  
Frocks & Frolics  
'You Tube'  
Tutorials



## The Angelina Beach Dress

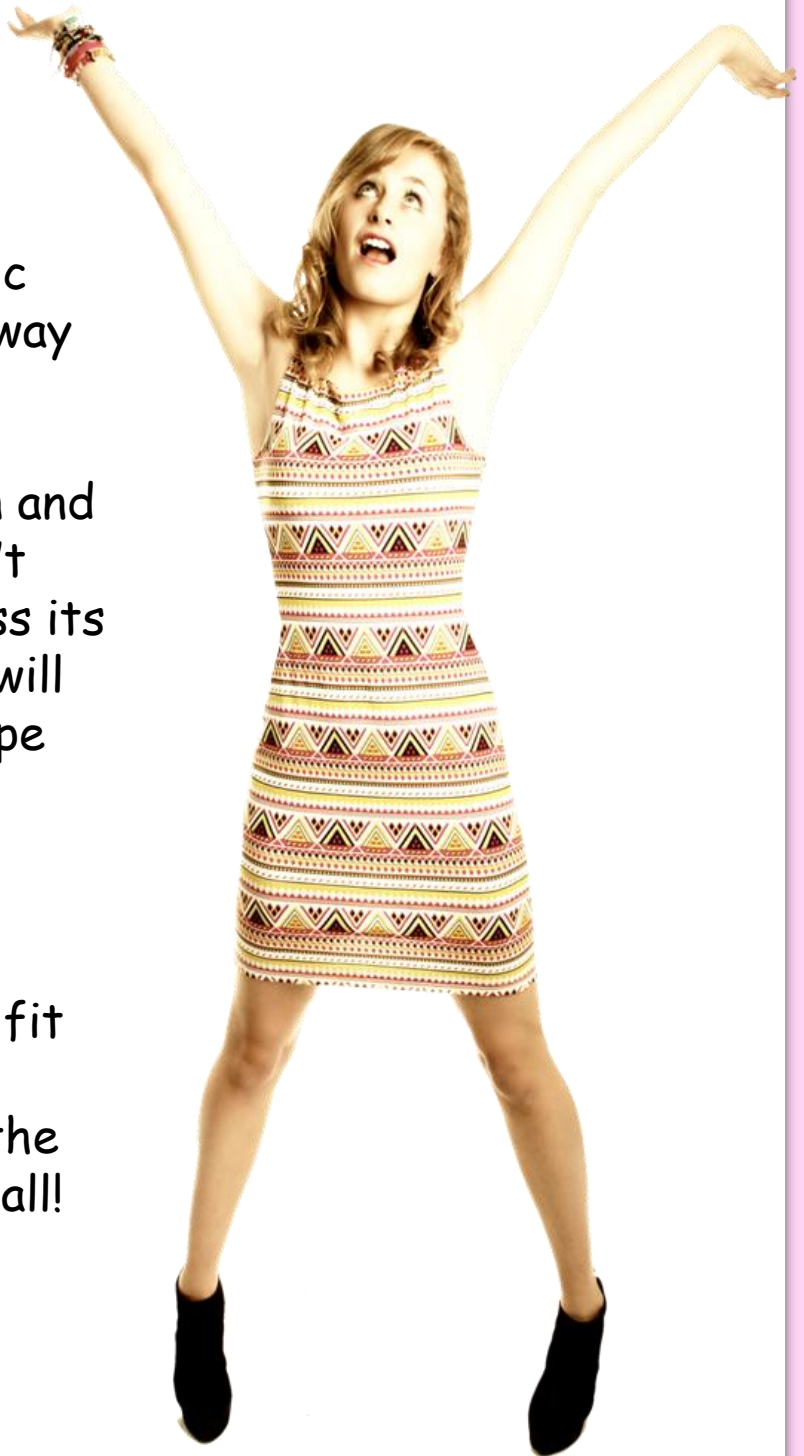
*What you need:*

1 meter/yard of fabric  
(jersey in one or two way stretch)

I usually work with a medium weight cotton and lycra mix fabric. Don't use 100% cotton unless its fabulous quality as it will stretch and loose shape like a tired t-shirt.

### **PDF Pattern:**

Make sure press the option don't shrink to fit A4 size! This is very important otherwise the pattern will be too small!



## Preparation:

Join the pattern pieces. Use the little flowers as a guide if you are not sure. What has the same flowers goes together.

Cut out one front, one back and a facing for each.

This pattern is the basis for a lot of styles. In my You Tube tutorials you can see how to quickly alter the pattern for a new look. Sometimes just changing the fabric makes a huge difference.

The '**You tube Tutorial**' will take you through the making process. Enjoy!



Scale of 5 cm. Make sure your  
printed pattern is true to size!

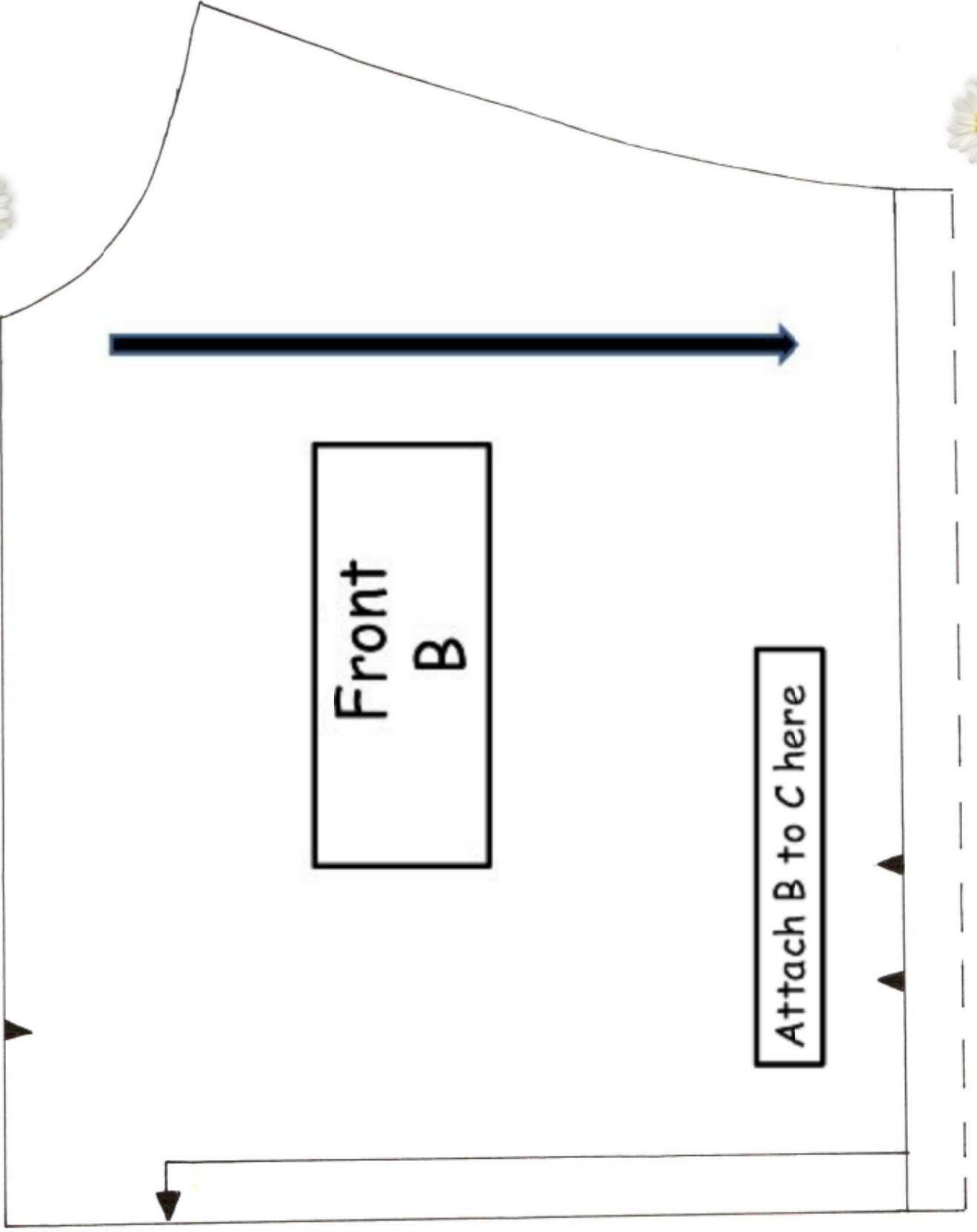


Angelina  
On the Beach  
Size XS

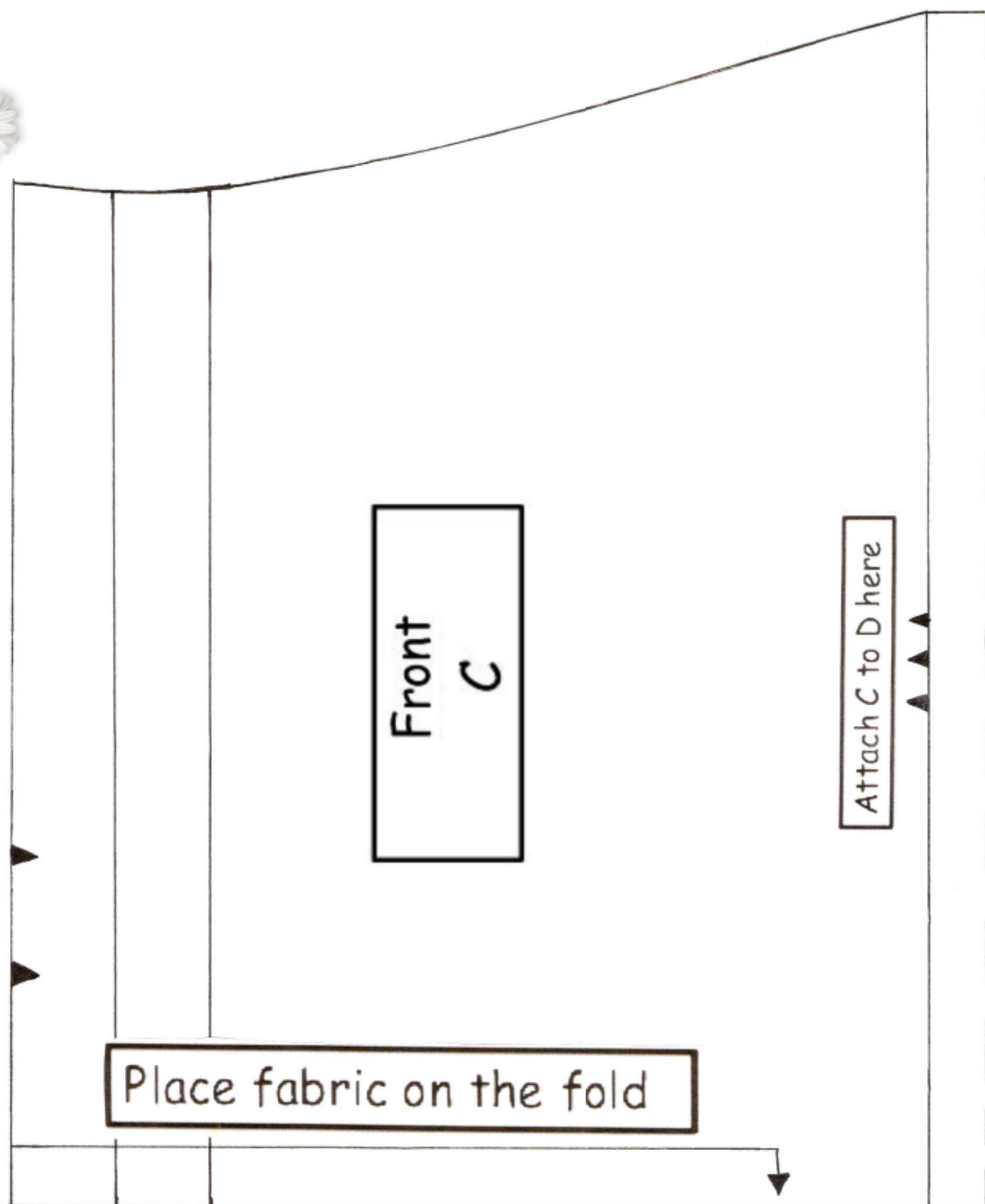
Front  
A

Attach A to B here











Front  
D

Attach D to E here



Front E

Attach all pieces then cut:

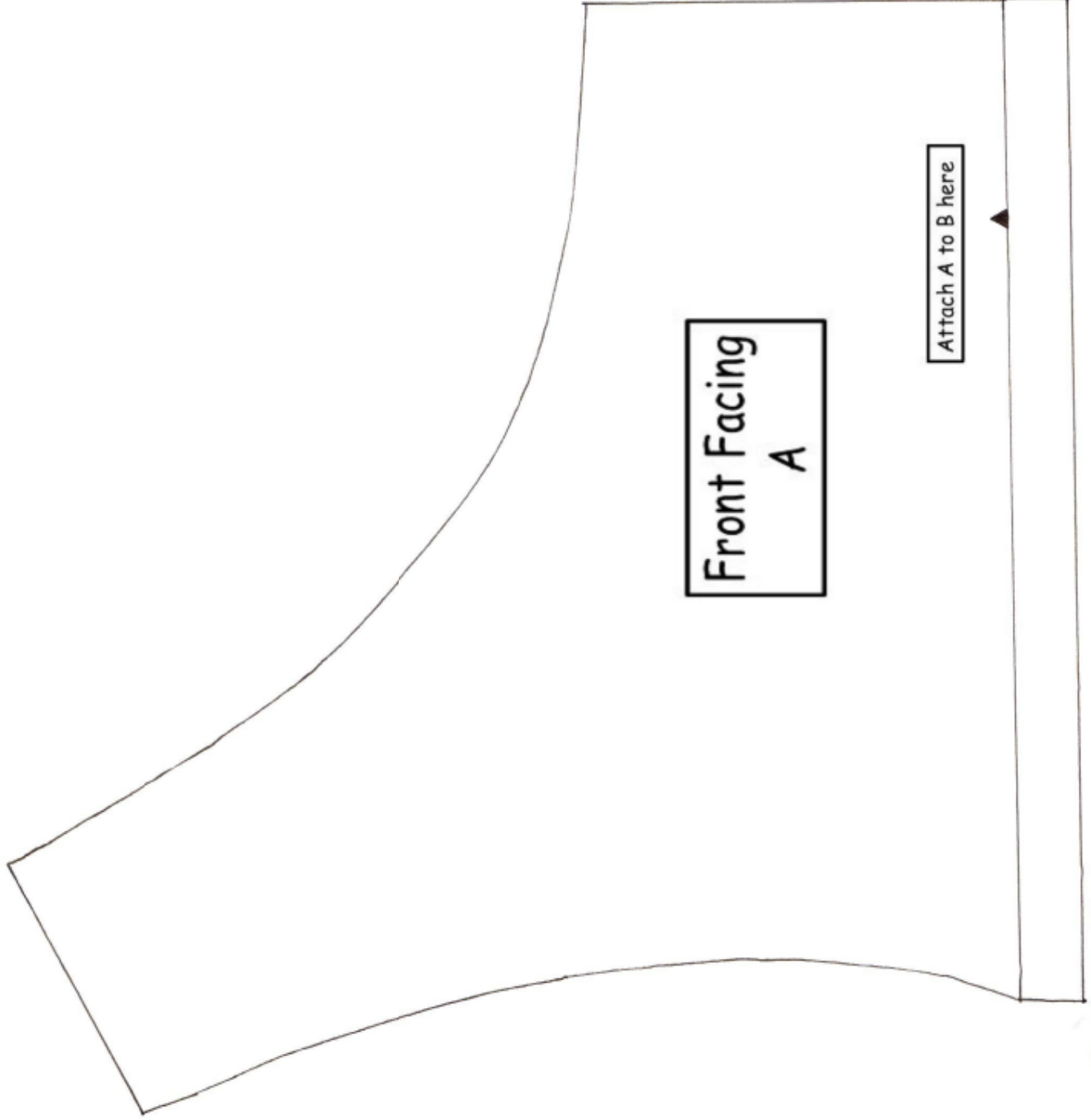
Front 1X

Back 1X

Facing Front (to attachment line) 1X

Facing Back (to attachment line) 1X





Front Facing  
A

Attach A to B here



Place fabric on the fold

Front Facing  
B





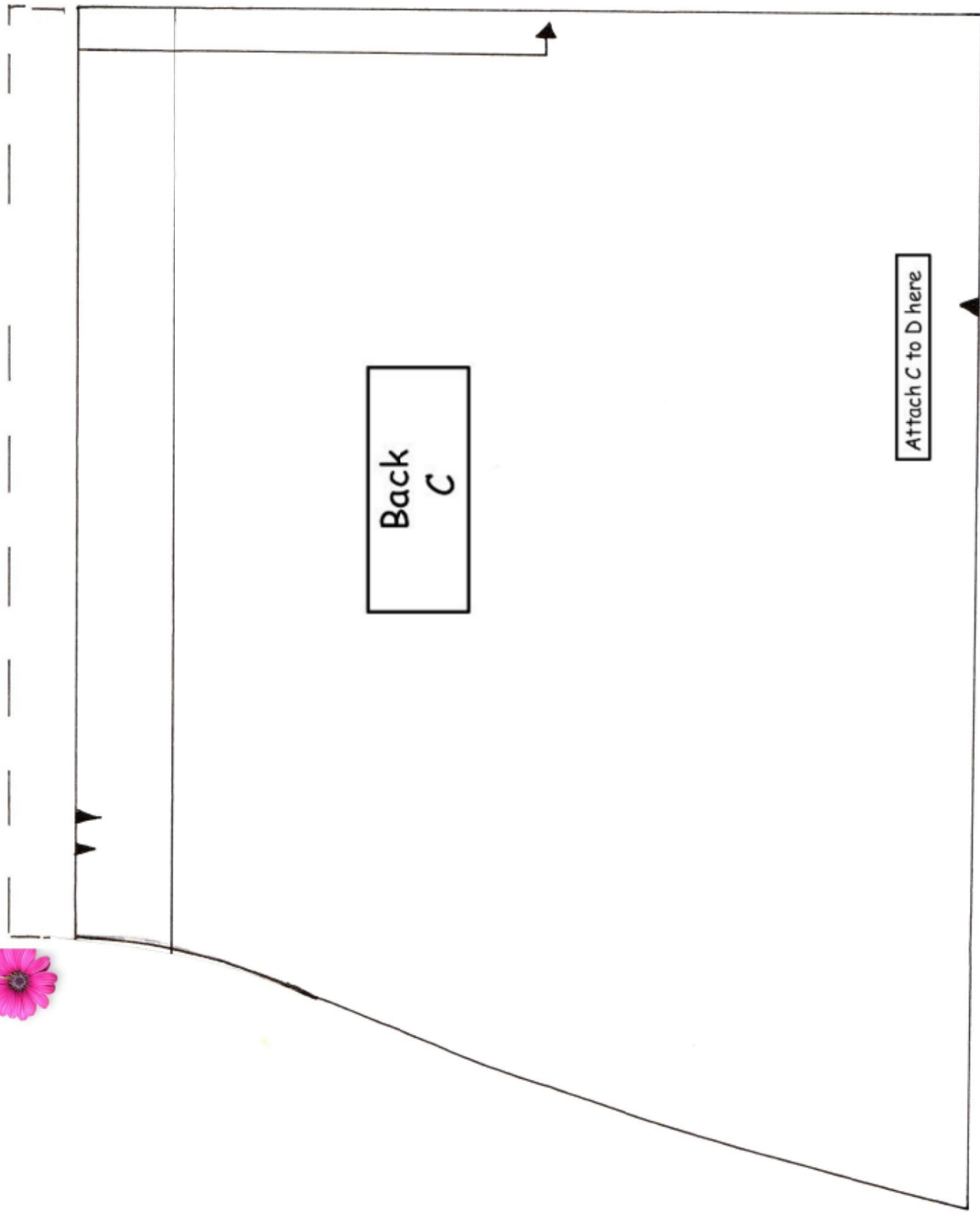
Place fabric on the fold



Back  
B

Attach B to C here





Back  
D

Attach D to E here





Back  
E



Back Facing  
A

Attach A to B here





Back Facing

B

Place fabric on the fold