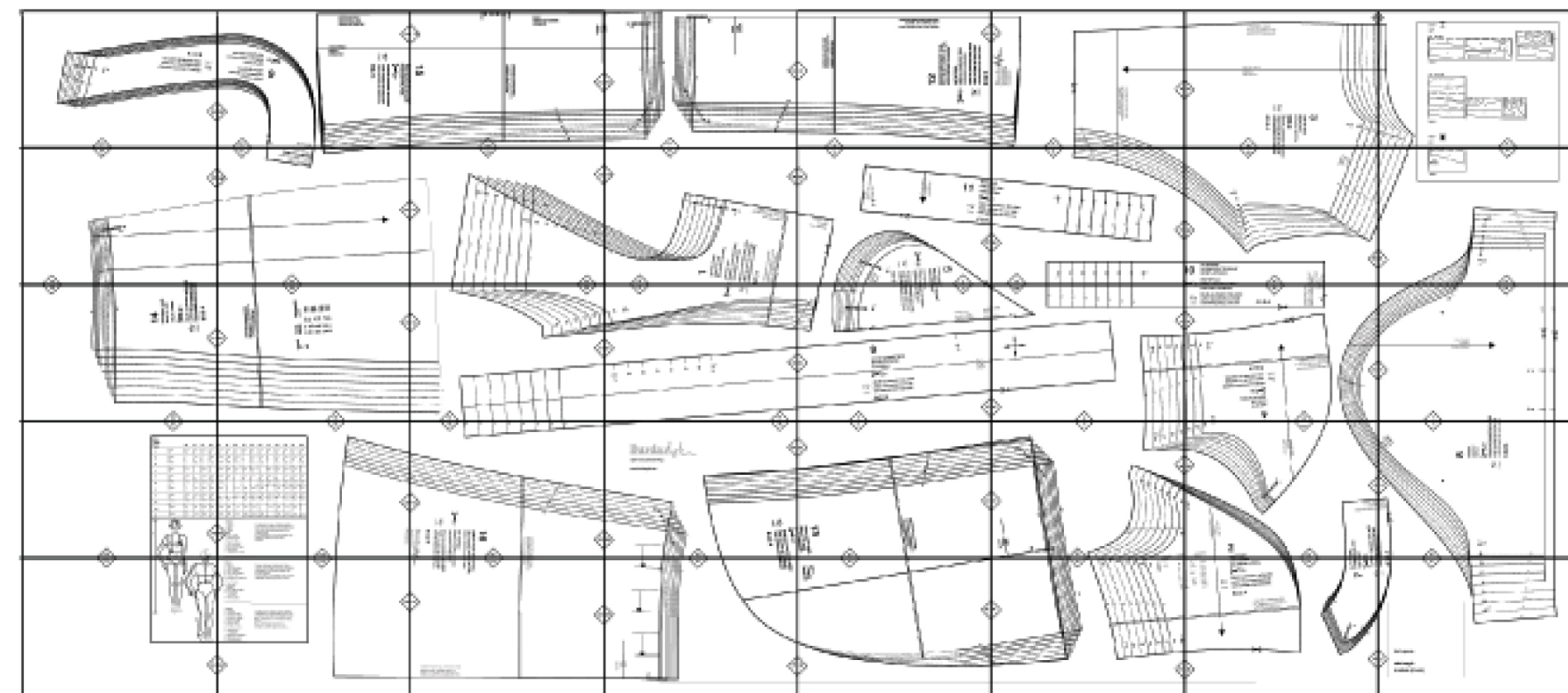


## Burdastyle Download Pattern BS-020 Variation 1

### Layout Drawing



2A

FABRIC

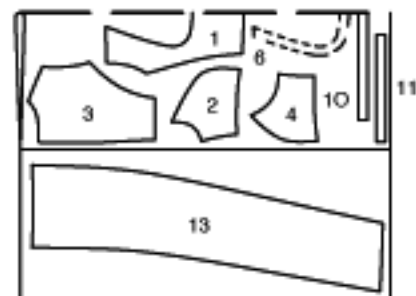
TISSU

TELA

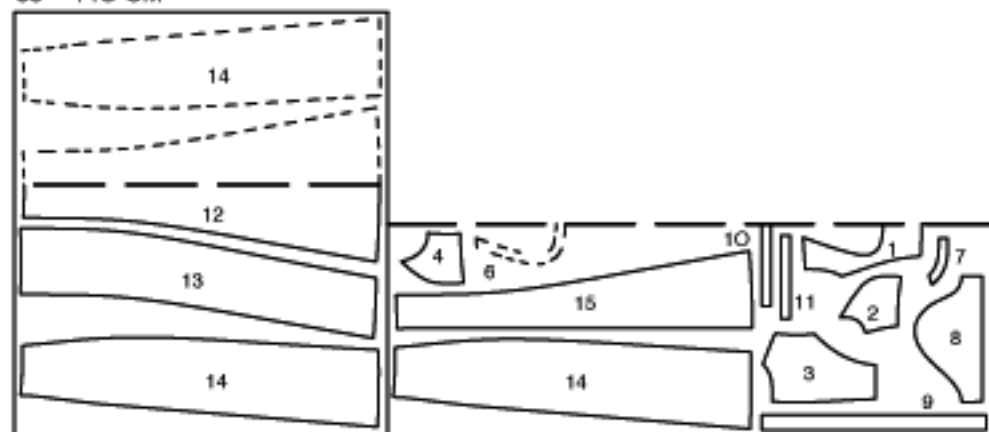
55" 140 CM



52-60



55" 140 CM



46-50

FABRIC

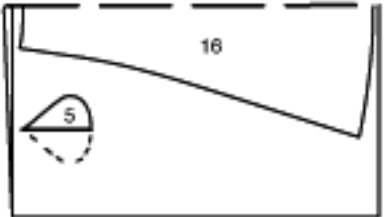
TISSU

TELA

II

1A

55 140 CM

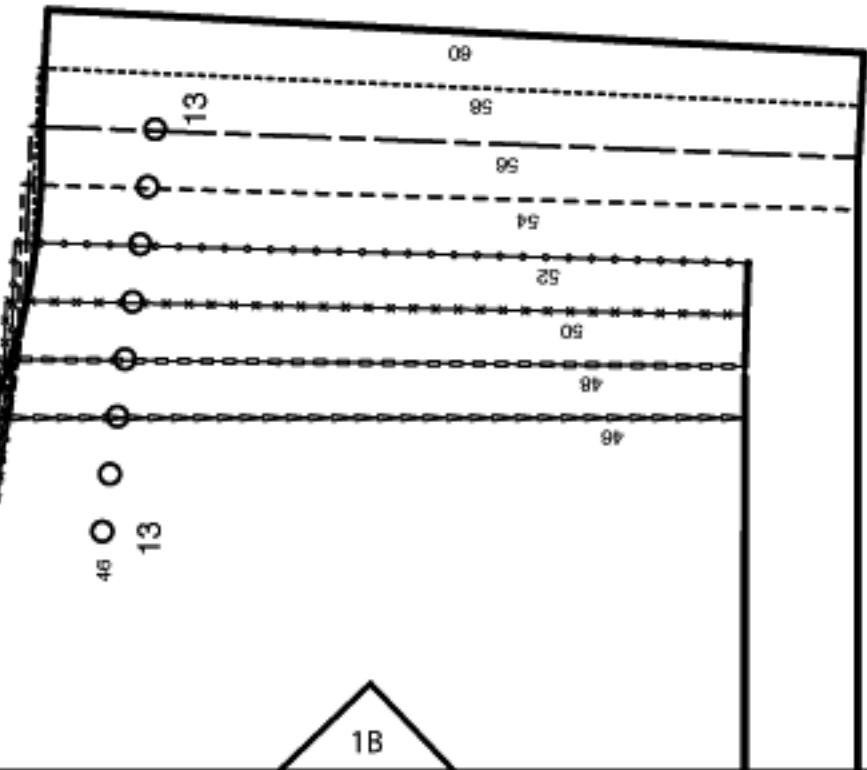


46-60

1A

8

2B



1B

46  
13

13

13

13

13

13

13

60

58

56

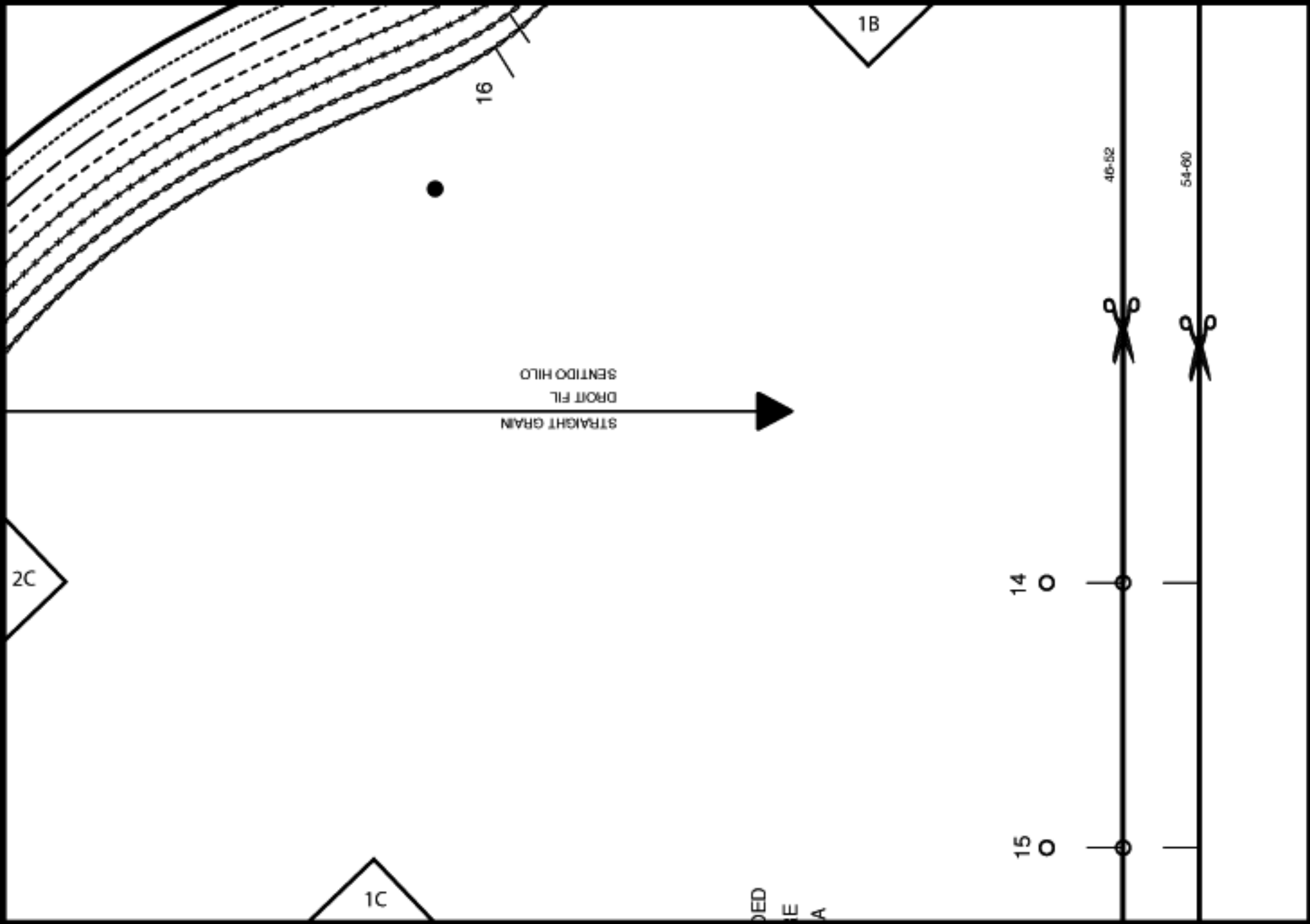
54

52

50

48

46



MARGEN DE COSTURA

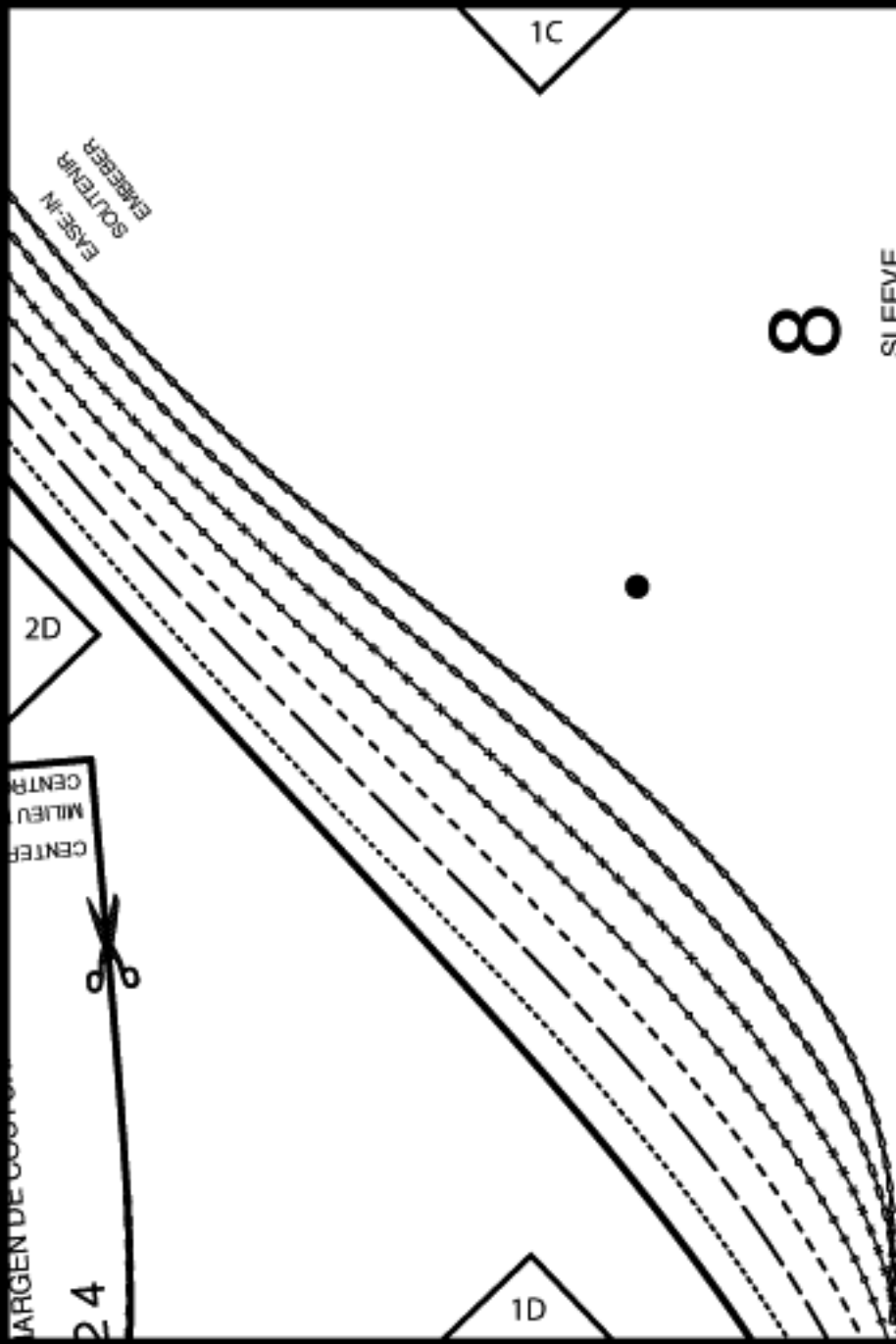
2.4

CENTER  
MILIEU  
CENTRO



2D

EASE-IN  
SOUTIEN  
EMBEGER



1D

1C

8

SLEEVE  
MANCHE  
MANGA



5/8"  
(1.5cm)

SEAM ALLOWANCE INCLU  
AVEC VALEUR DE COUTU  
CON MARGEN DE COSTU

6024

46

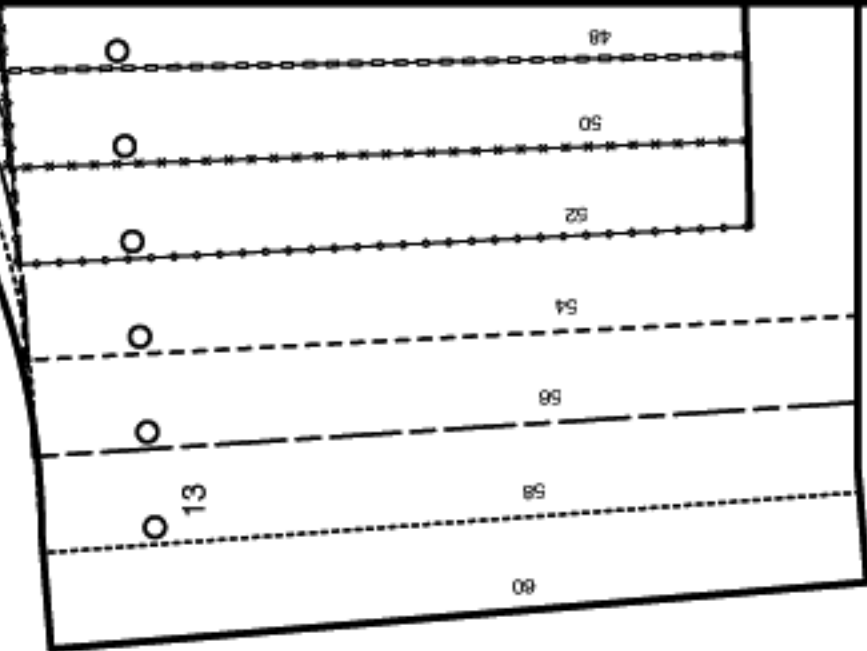
13

46

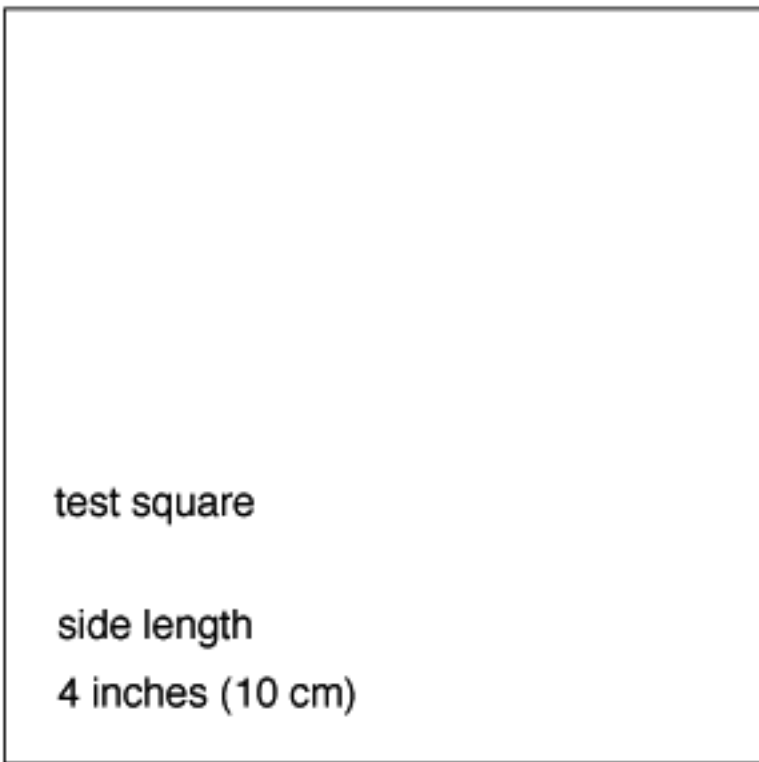
CON  
(1.50cm)

60

1D



2E



test square  
side length  
4 inches (10 cm)

2A

CENTER BACK ZIPPER  
MILIEU DOS, FERM. A GLISS.  
MEDIO POST. CREMALLERA

STRAIGHT GRAIN  
DROIT FIL  
SENTIDO HILO

4a

3  
O 48  
3

3

CENTER BACK  
MILIEU DOS  
ESPALDA CENTRAL

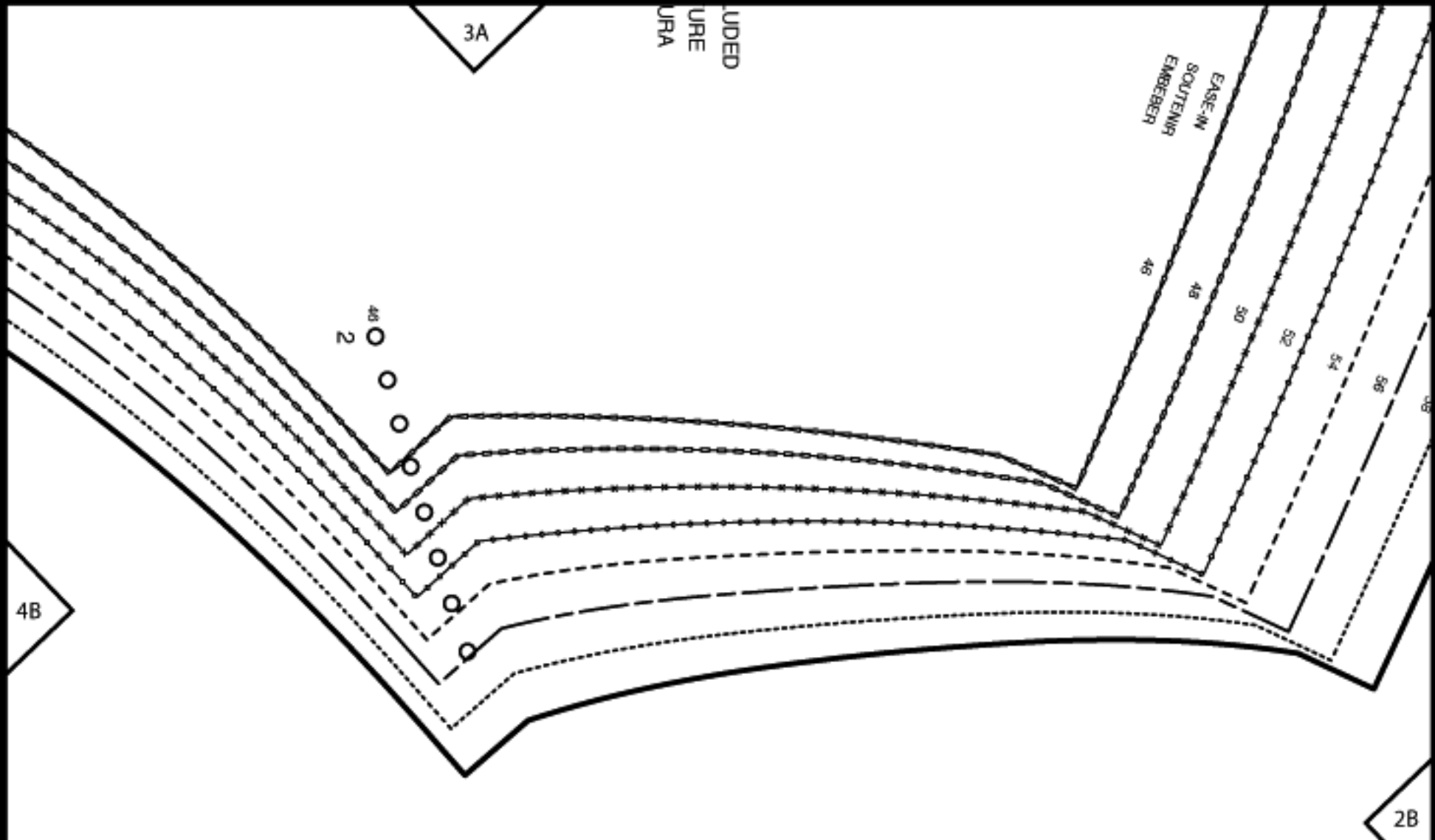


5/8"  
(1.5cm)

SEAM ALLOWANCE INC  
AVEC VALEUR DE COU  
CON MARGEN DE COS

6024

3A



DUED  
URE  
URA

EASE-IN  
SOUTENIR  
EMBERR

46  
2

46

48

50

52

54

56

4B

2B

3B

10

FRONT BAND  
PAREMENT/PATTE DEVANT  
CENEF A ANTERIOR

ON THE FOLD  
DANS LA PLIURE DU TISSU

EU DEVANT  
OBLEZ  
NIGHT GRAIN  
T FIL  
TIDO HILO



CON CANTO DOBLADO

3B

CENTER FRONT FOL  
PLIURE DU TISSU MI  
MEDIO DELANTERO,  
ST  
DR  
SE

SEAM ALLOWANCE INCLUDED

5/8"

AVEC VALEUR DE COUTURE

(1,5cm)

CON MARGEN DE COSTURA

6024

10



4C



48  
8

LENGTHEN OR SHORTEN HERE  
RALLONGER OU RACCOURCIR ICI  
ALARGAR O ACORTAR AQUI

6024

(1,5cm)

5/8"

SEAM ALLOWANCE INCLUDED  
AVEC VALEUR DE COUTURE  
CON MARGEN DE COSTURA



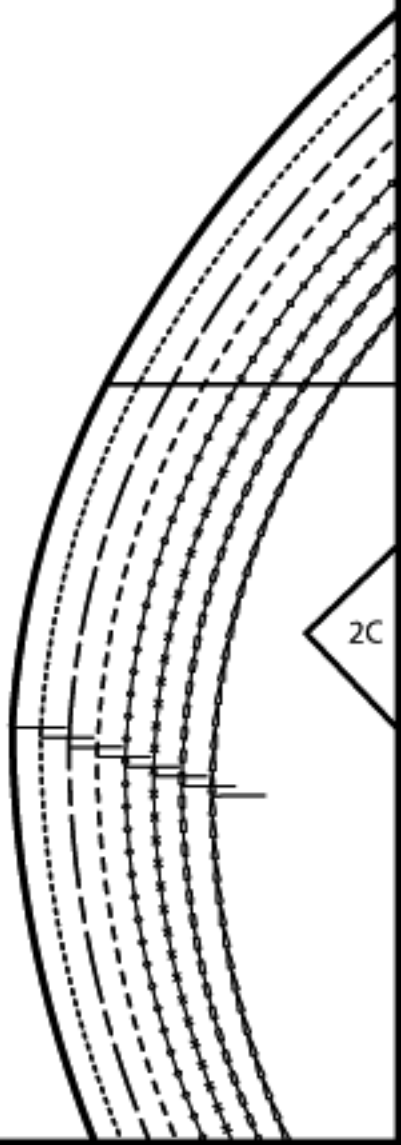
SIDE BACK  
COTE DOS  
ESPALDA LATERAL

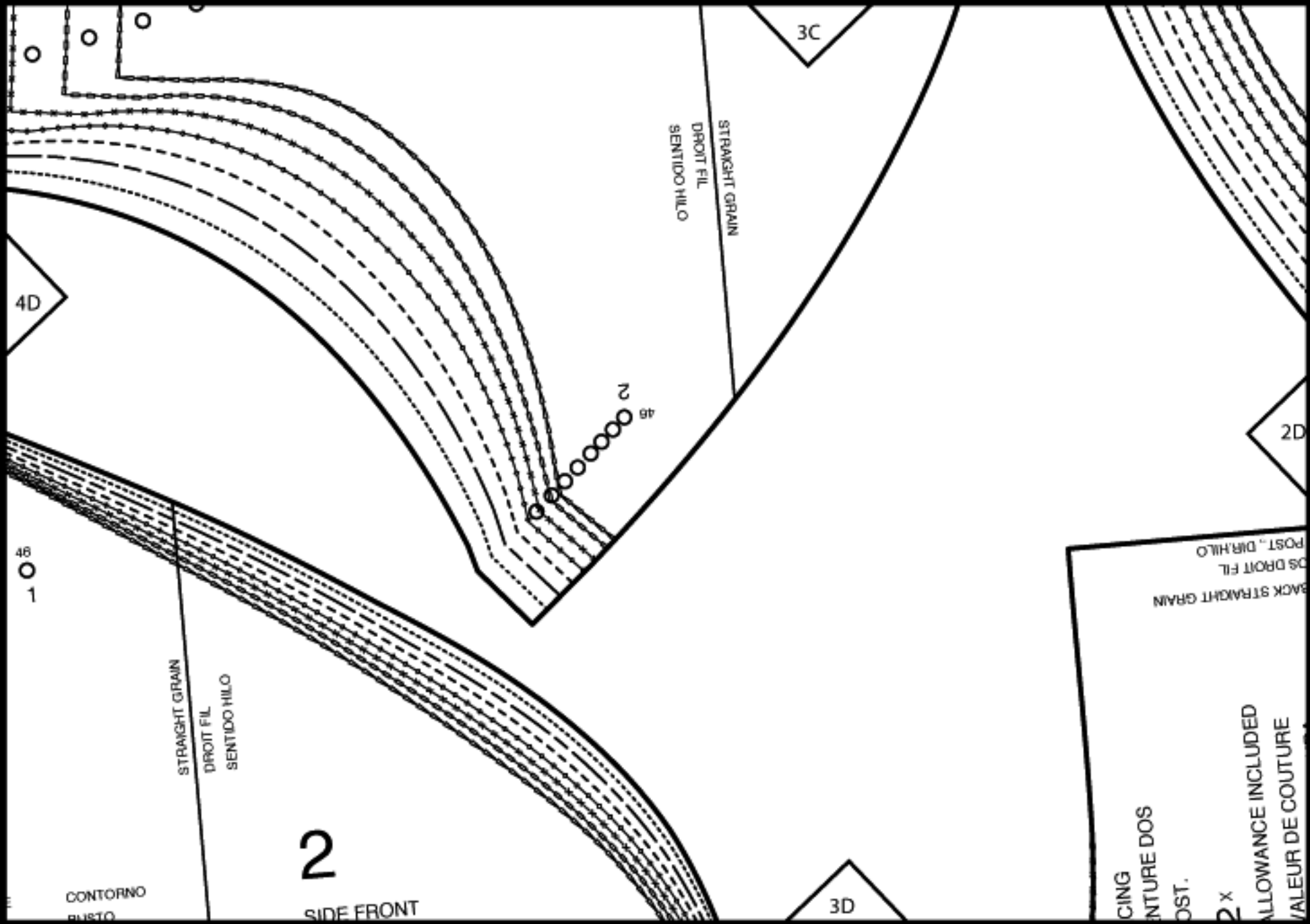
4

12

2C

3C





3C

STRAIGHT GRAIN  
DROIT FIL  
SENTIDO HILO

4D

4B  
2

2D

BACK STRAIGHT GRAIN  
DOS DROIT FIL  
POST. DIR. HILO

4B  
1

STRAIGHT GRAIN  
DROIT FIL  
SENTIDO HILO

2

CING  
ENTURE DOS  
POST.  
2 x  
ALLOWANCE INCLUDED  
VALEUR DE COUTURE

CONTORNO  
BUSTO

SIDE FRONT

3D

3/4"	108cm
1/2"	113cm
	119cm
3/4"	126cm
	132cm
3/4"	139cm
1/2"	146cm
	152cm

COTE DEVANT  
DELANTERO LATERAL



5/8"  
(1,5cm)

SEAM ALLOWANCE INCLUDED  
AVEC VALEUR DE COUTURE  
CON MARGEN DE COSTURA

6024

LENGTHEN OR SHORTEN HERE  
RALLONGER OU RACCOURCIR ICI  
ALARGAR O ACORTAR AQUI



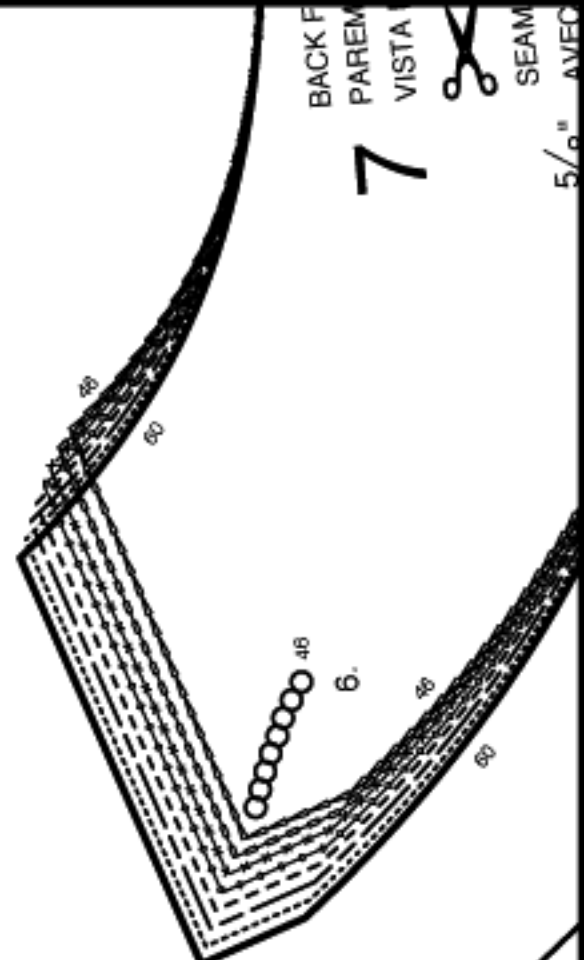
3D

BACK F  
PAREM  
VISTA  
SEAM  
AVEC

7



2E



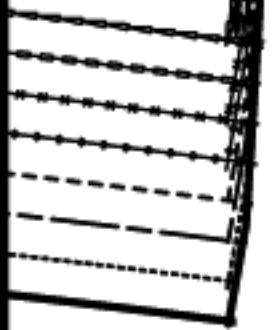
4E

6A

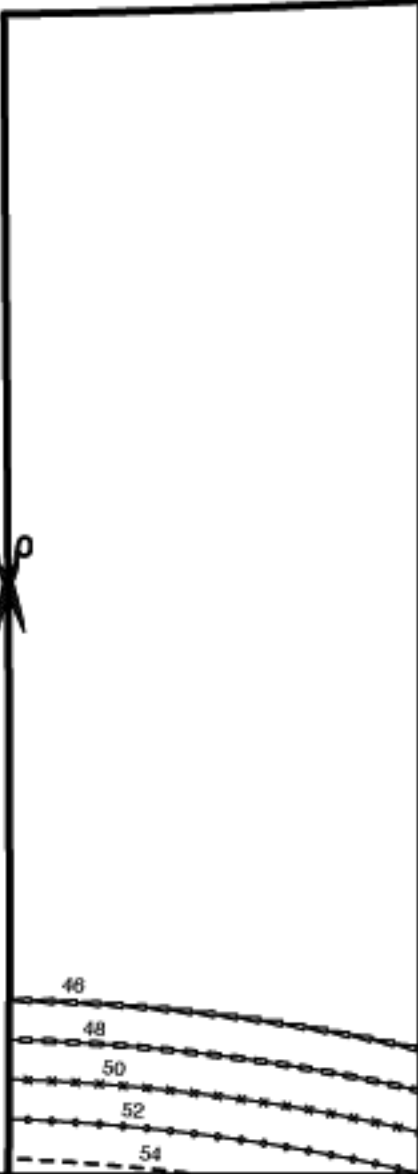
Burda  
style

open source sewing

www.burdastyle.com



5A



LENGTHEN OR SHORTEN HERE  
PALLONGER OU RACCOURCIR ICI  
ALARGAR O ACORTAR AQUÍ



4a

5A

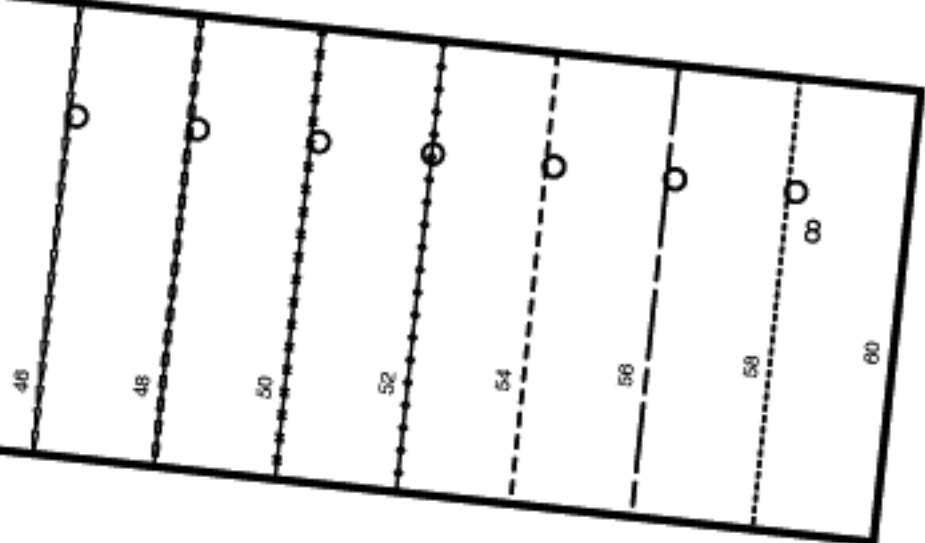
56

58

60

AND  
NT DOS  
POST.  
X  
LOWANCE INCLUDED  
EUR DE COUTURE  
GEN DE COSTURA

46  
8



46

48

50

52

54

56

58

60

8

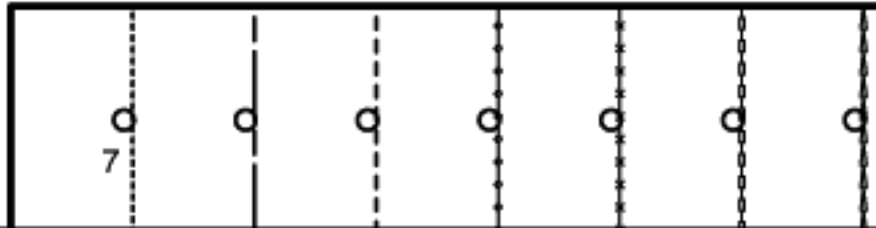
4B

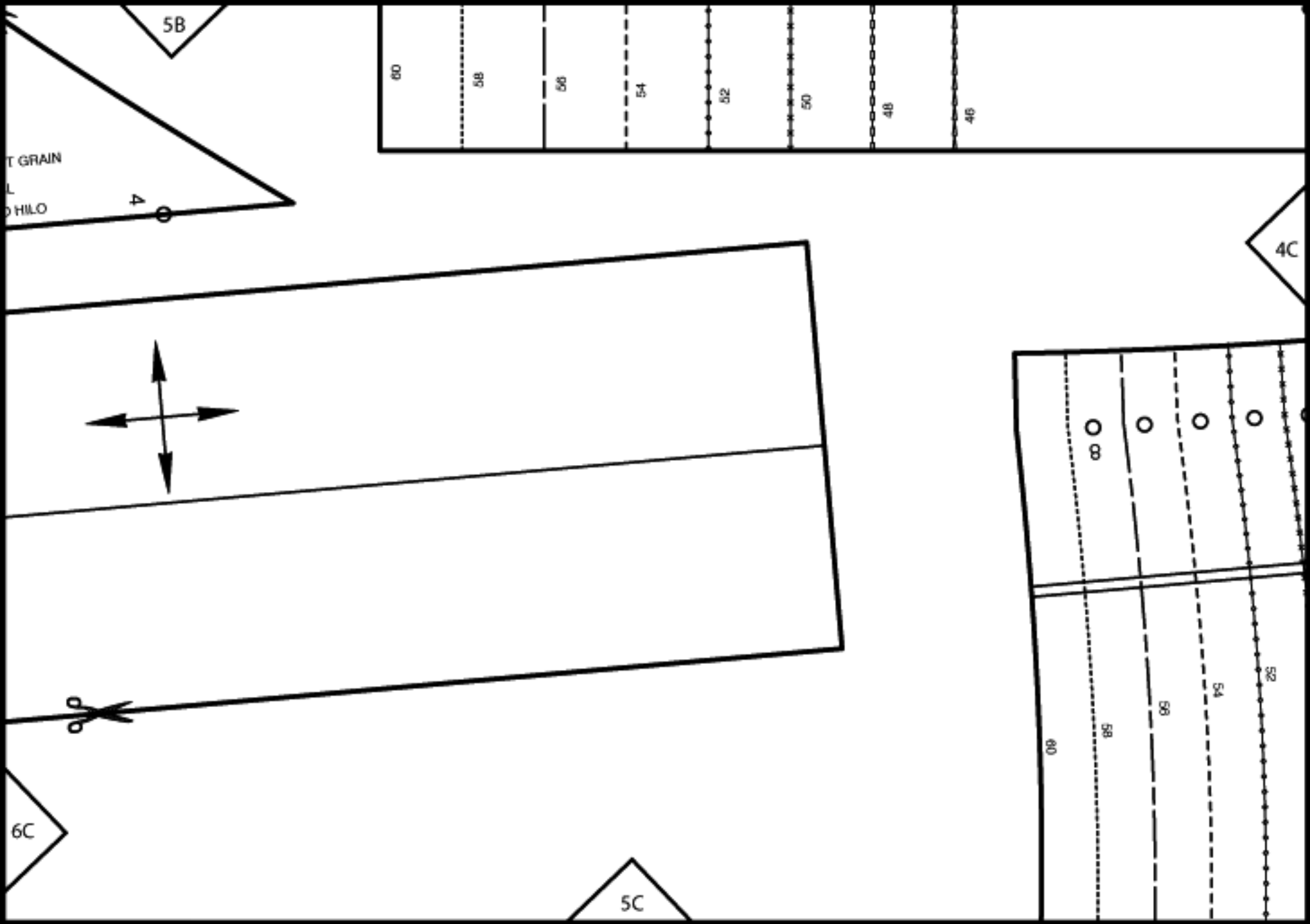
6B

7

46  
7

5B





5C

12

4D

6D

WAIST  
TALLE  
CINTURA

10

60

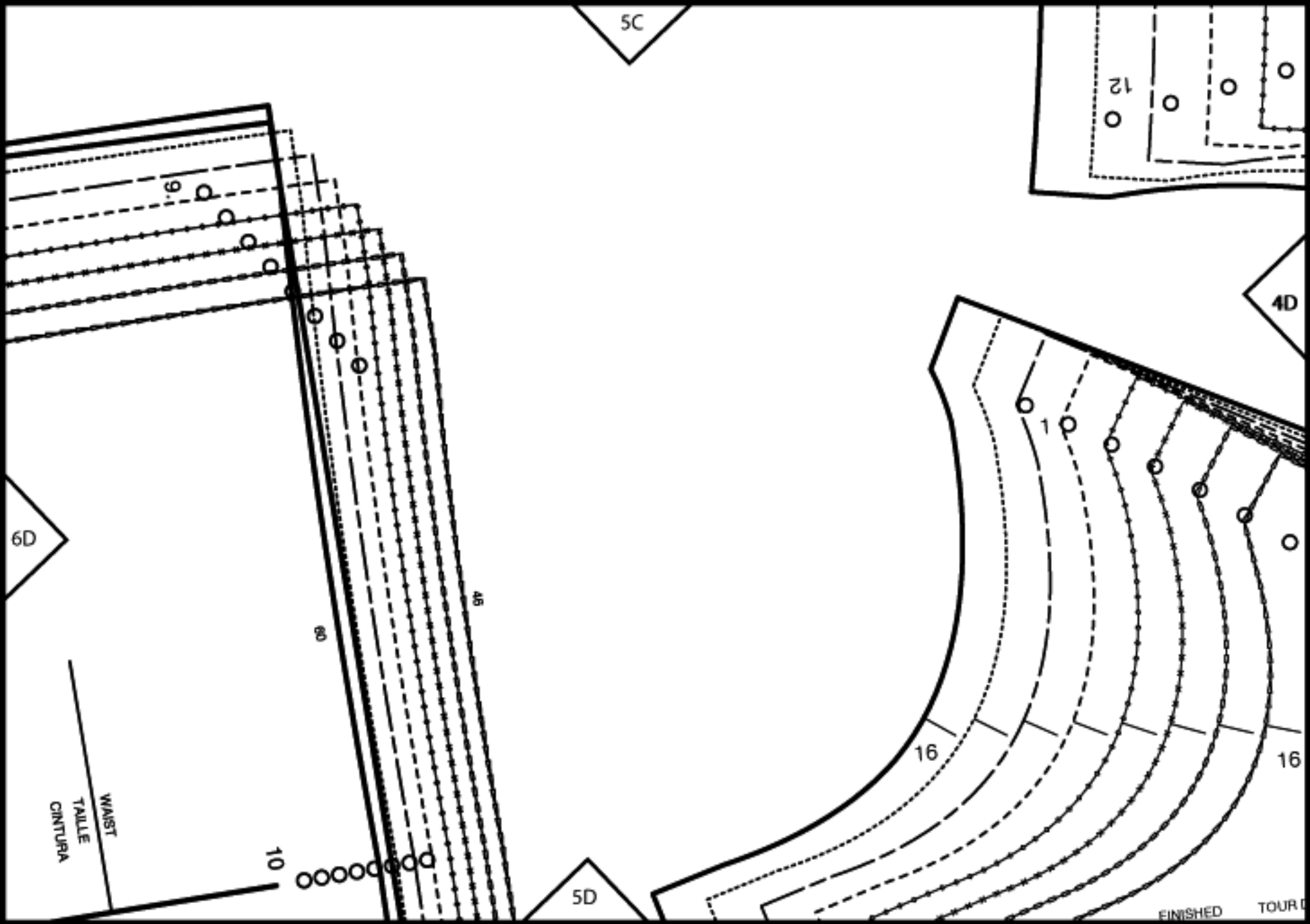
45

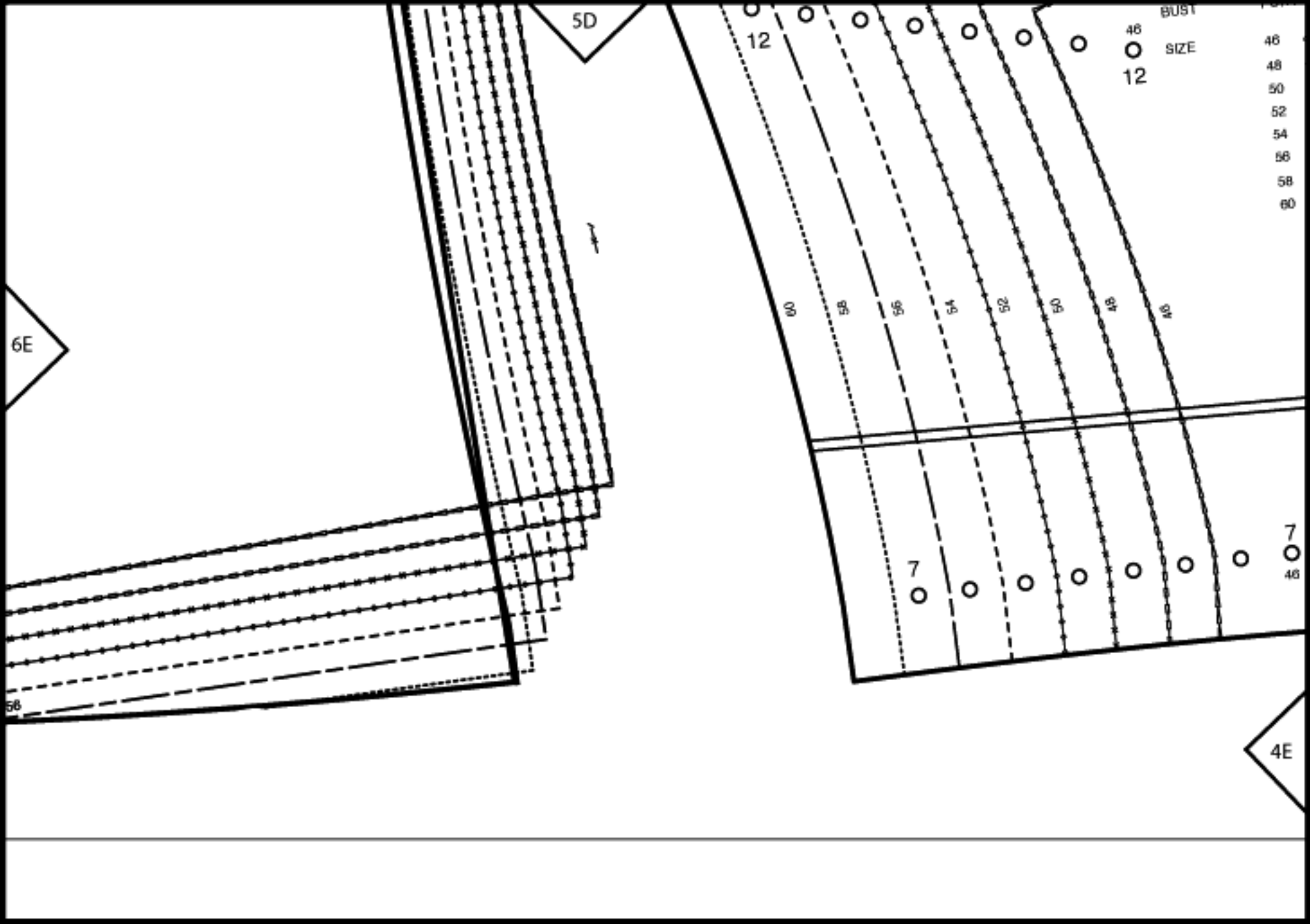
5D

16

16

FINISHED TOUR





5D

12

BUST  
SIZE  
46  
48  
50  
52  
54  
56  
58  
60

6E

00 56 56 54 52 50 48 46

7 7 46

58

4E




LENGTHEN OR SHORTEN HERE  
RALLONGER OU RACCOURCIR ICI  
ALARGAR O ACORTAR AQUI

7A

12

CENTER FRONT SKIRT PANEL  
PIECE MILIEU DEVANT DE JUPE  
FALDA CENTRAL ANTERIOR

ON THE FOLD

 1 x  
DANS LA PLIURE DU TISSU  
CON CANTO DOBLADO

SEAM ALLOWANCE INCLUDED  
AVEC VALEUR DE COUTURE  
CON MARGEN DE COSTURA

5/8"  
(1.5cm)

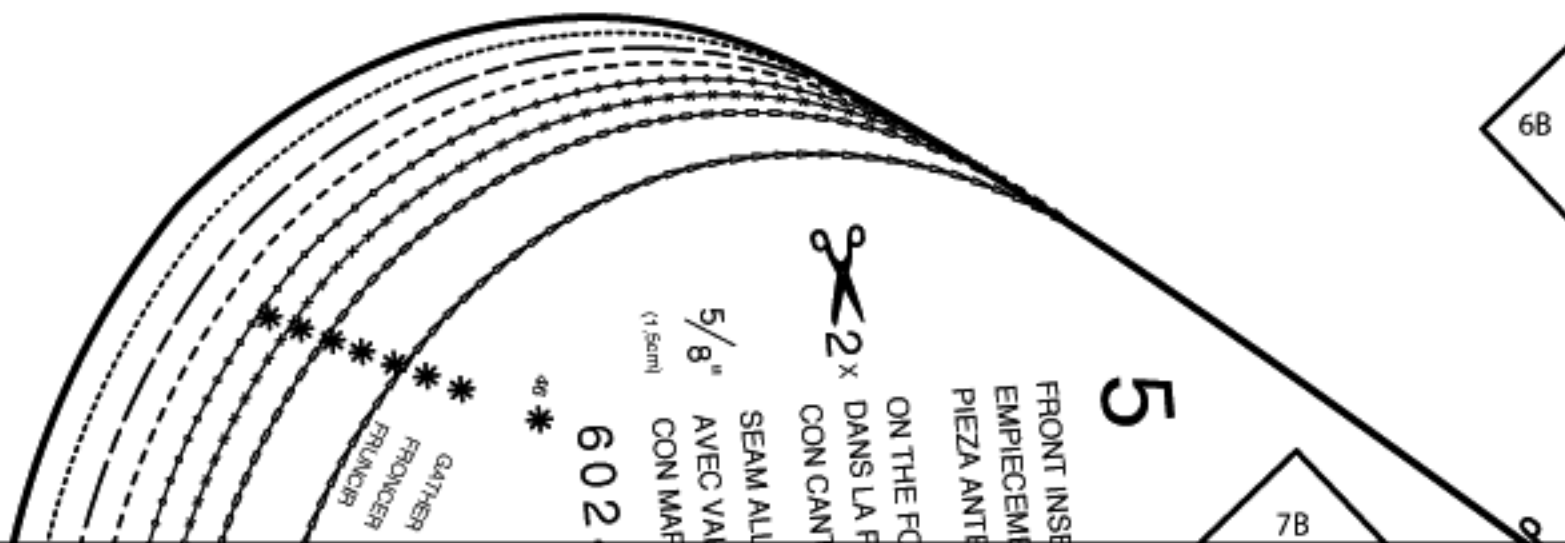
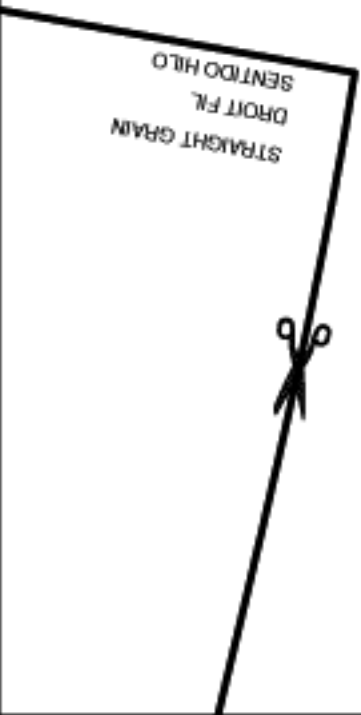
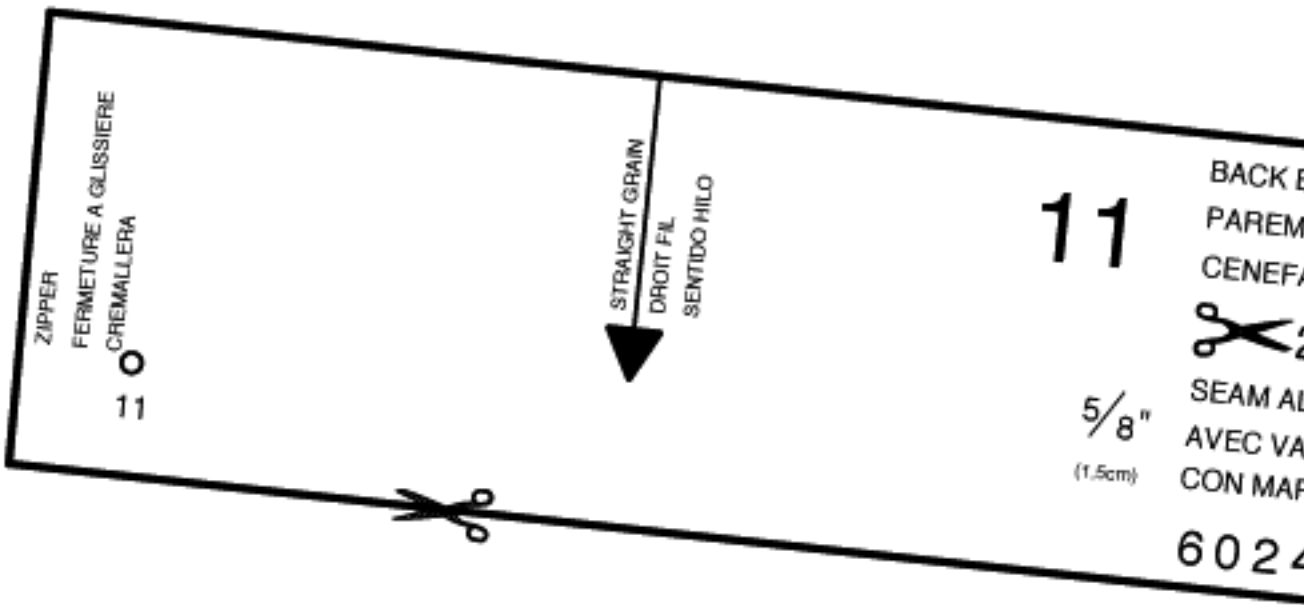
6024

6A

CENTER FRONT FOLD, STRAIGHT GRAIN  
MILIEU DEVANT PLIURE, DROIT FIL  
MEDIO DELANTERO DOBLEZ SENT.HILO

7A

8B



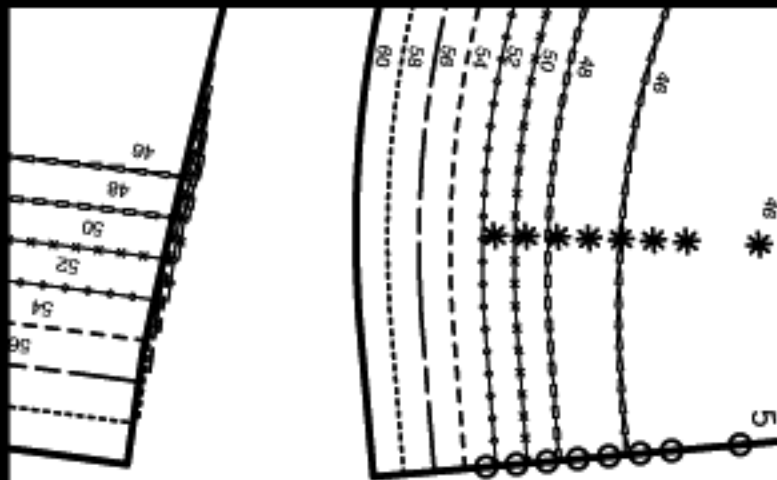
6B

7B

ANT DEVANT  
RIOR  
D  
PIURE DU TISSU  
O DOBLADO  
DANCE INCLUDED  
EUR DE COUTURE  
GEN DE COSTURA

FABRIC FOLD  
PLIURE DU TISSU  
CANTO DE DOBLEZ

STRAIG  
DROIT  
SENTIO



9

SLEEVE-OR WRISTBAND  
BRACELET/POIGNET  
PU O MANGA

15

FOLD  
PLIURE  
DOBLEZ



SEAM ALLOWANCE INCLUDED  
AVEC VALEUR DE COUTURE  
CON MARGEN DE COSTURA

5/8"  
(1.5cm)

6024

8C

7C

6C

7C

8D

60  
58  
56  
54  
52  
50  
48  
46

6D

LENGTHEN OR SHORTEN HERE  
PALLONGER OU RACCOURCIR ICI  
ALARGAR O ACORTAR AQUI

13

FRONT SKIRT PANEL  
DEVANT DE JUPE  
FRONT ANTERIOR

7D

7D

RIGHT  
A DROITE  
DERECHO

6E

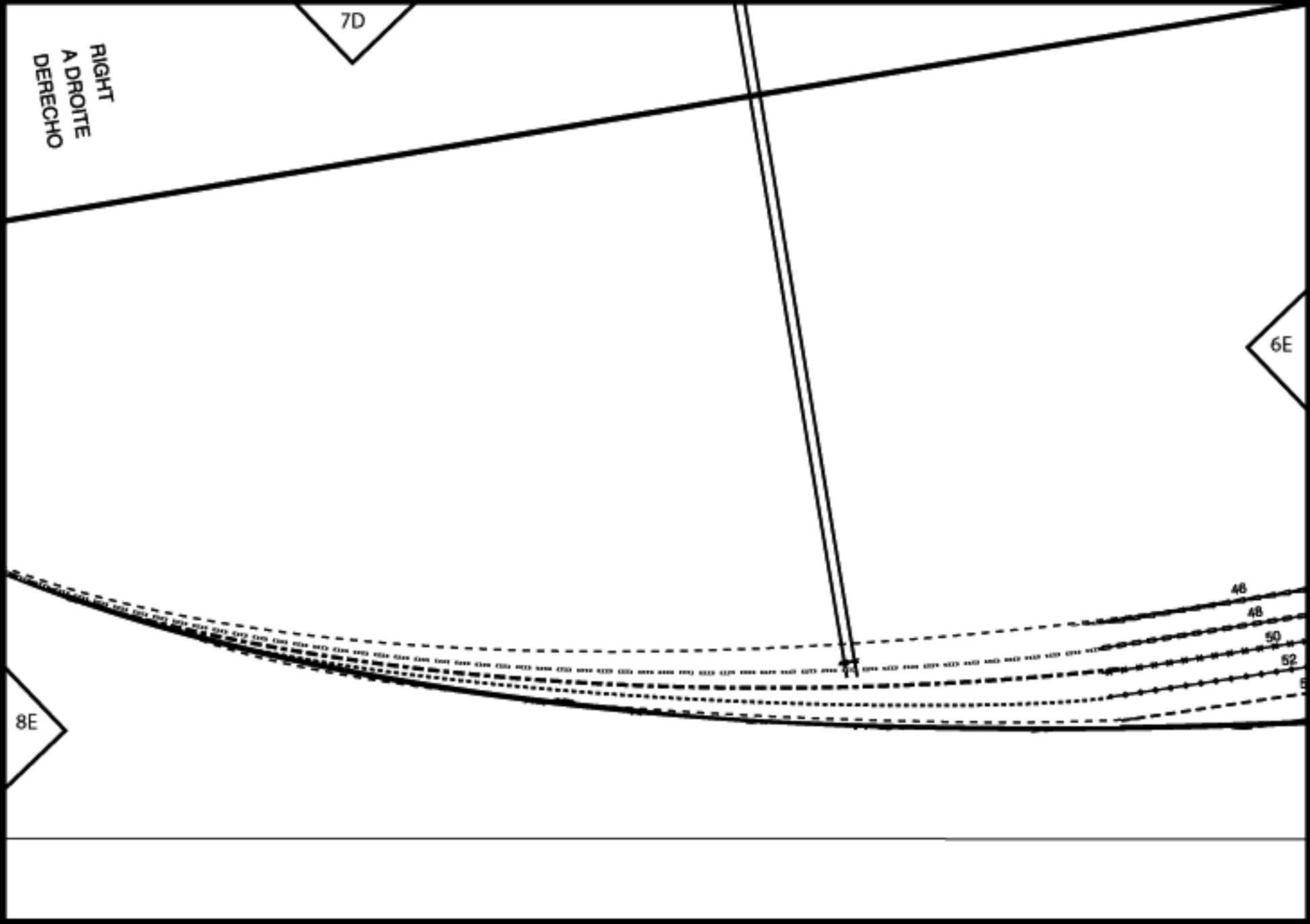
48

48

50

52

8E

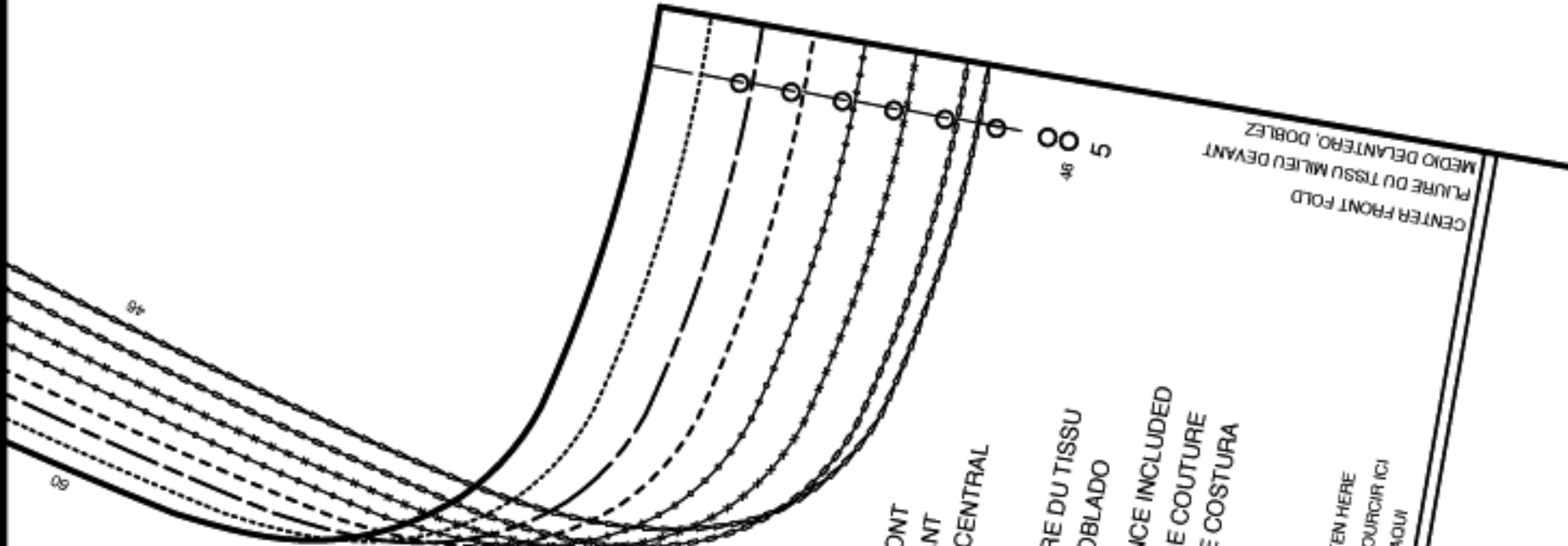




9A

8B

10B



CENTER FRONT FOLD  
 PLIURE DU TISSU MILIEU DEVANT  
 MEDIO DELANTERO, DOBLEZ

1

CENTER FRONT  
 MILIEU DEVANT  
 DELANTERO CENTRAL

ON THE FOLD  
 X DANS LA PLIURE DU TISSU  
 CON CANTO DOBLADO

SEAM ALLOWANCE INCLUDED  
 AVEC VALEUR DE COUTURE  
 CON MARGEN DE COSTURA

6024

LENGTHEN OR SHORTEN HERE  
 RALLONGER OU RACCOURCIR ICI  
 ALARGAR O ACORTAR AQUI

9B





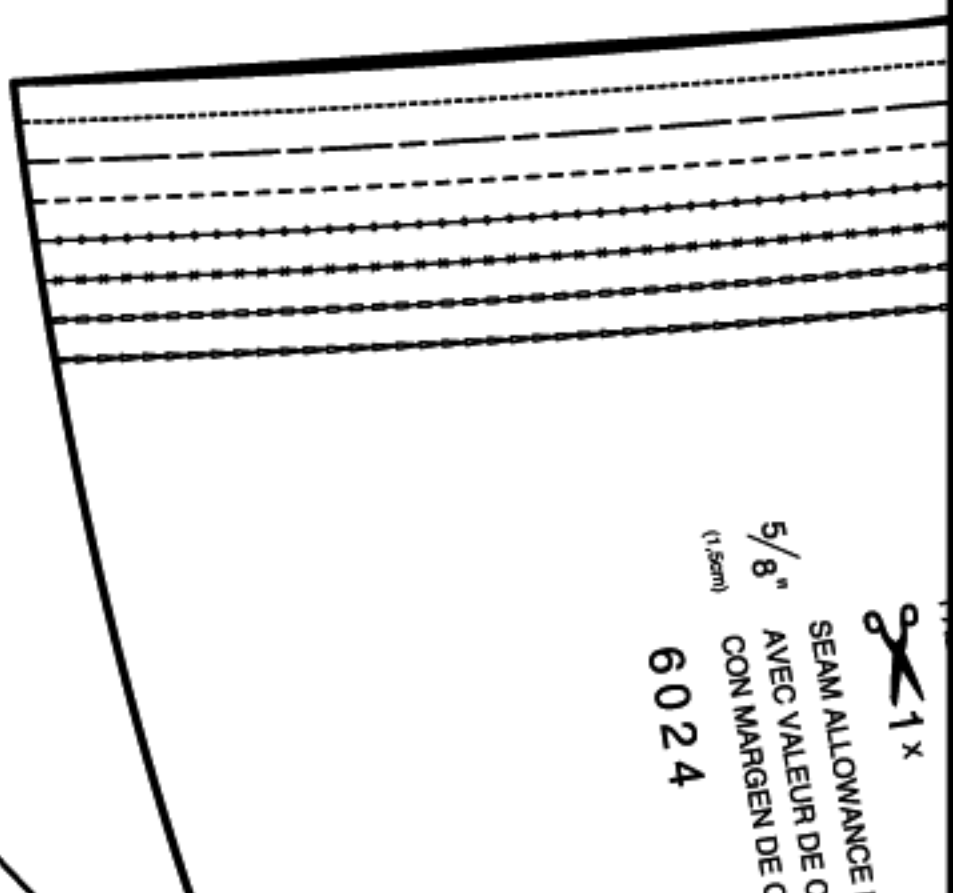
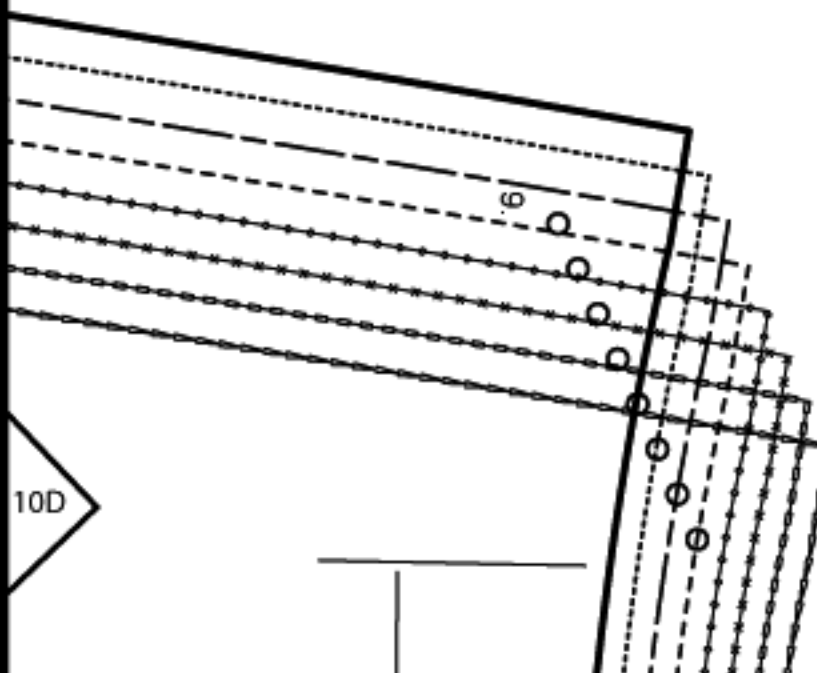
# Burda *style*

open source sewing

[www.burdastyle.com](http://www.burdastyle.com)

9C

8D



5/8" (1.5cm)

6024

SEAM ALLOWANCE 1  
AVEC VALEUR DE C  
CON MARGEN DE C



9D

10D

CLUDED  
UTURE  
STURA

9D

48

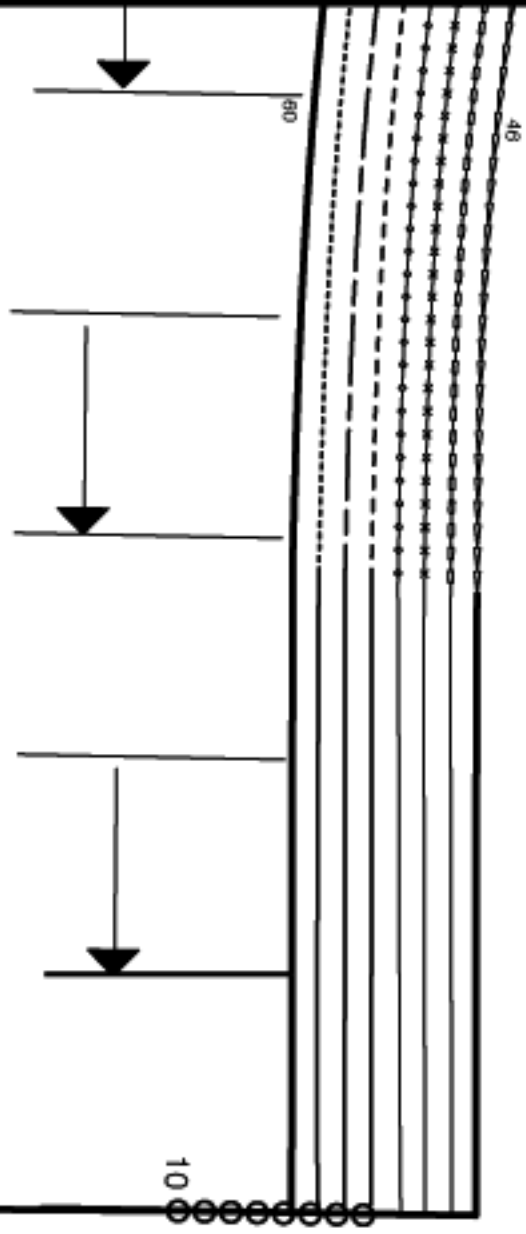
60

10

8E

10E

WAIST  
TAILLE  
CINTURA



46

60

ZIPPER  
FERMETURE A GLISSIERE  
CREMALLERA

TAILLE  
CINTURA

12A

15

LENGTHEN OR SHORTEN HERE  
RALLONGER OU RACCOURCIR ICI  
ALARGAR O ACORTAR AQUI

10A

46

48

50

52

54

56

58

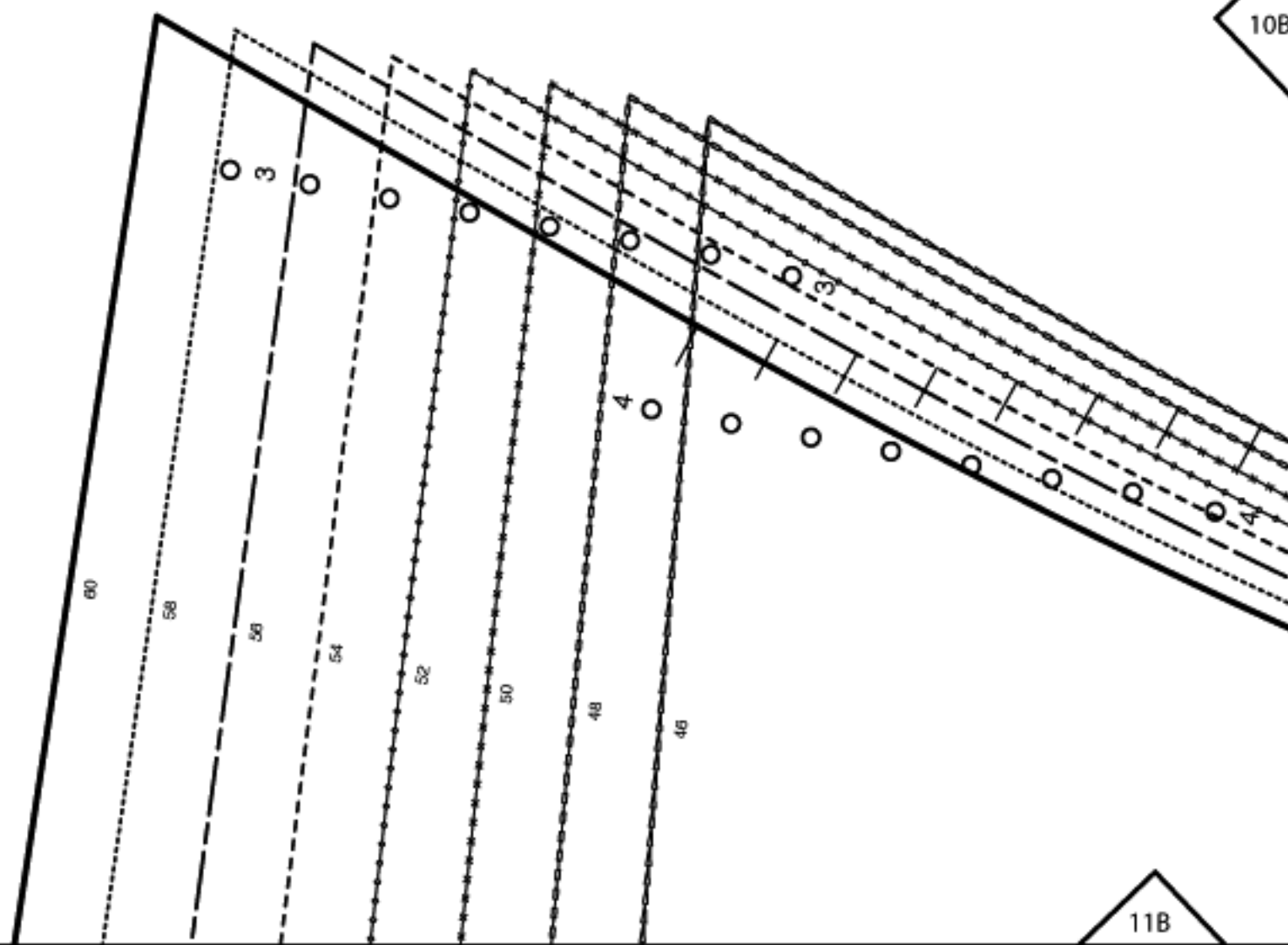
60

11A

11A

10B

12B



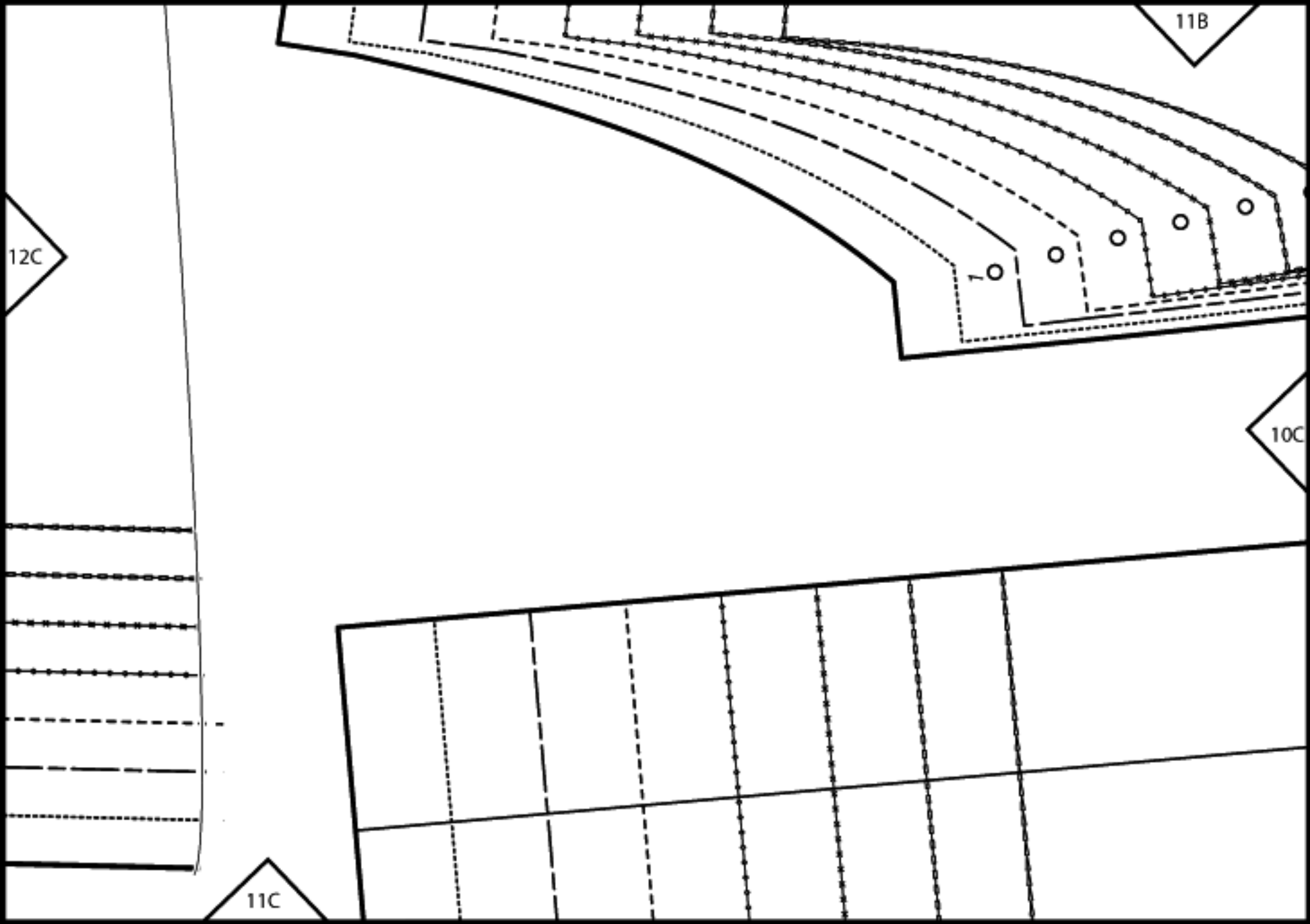
11B

11B

12C

10C

11C



10D

60  
58  
56  
54  
52  
50  
48  
46LENGTHEN OR SHORTEN  
RALLONGER OU RACCOURCIR  
ALARGAR O ACORTAR

11D

16

CENTER FRONT SKIRT  
PIECE MILIEU DE VESTE  
FALDA CENTRAL ANTEPECHO

ON THE FOLD

1 x DANS LA PLEURE DU  
CON CANTO DOBLA

SEAM ALLOWANCE

AVEC VALEUR DE COUTURE  
CON MARGEN DE COSTURA

5/8"

(1.6cm)



1 x

CON CANTO DOBLA

SEAM ALLOWANCE

AVEC VALEUR DE COUTURE

CON MARGEN DE COSTURA

6024

11C

60  
58  
56  
54  
52  
50  
48  
46

12D

Burda  
style

Copyright © 2010 BurdaStyle.com



CENTER BACK SEAM  
COUTURE MILIEU DOS  
CENTRO POST. COSTURA

12A

STRAIGHT GRAIN

DROIT FIL  
SENTIDO HILO

5/8"  
(1.5cm)

SEAM ALLOWANCE INCLUDED  
AVEC VALEUR DE COUTURE  
CON MARGEN DE COSTURA

2x

6024

PIECE MILIEU DOS DE JUPE  
FALDA CENTRAL POST.

FRONT FACING  
PAREMENTURE DEVANT  
VISTA DELANTERA  
ON THE FOLD  
DANS LA PUIURE DU TISSU  
CON CANTO DOBLADO

6



SENTIDO HILO

13A

14A



13A

STRAIGHT GRAN  
MEDIO DELANTERO, DOBLEZ  
PLIURE DU TISSU MIEUX DEVANT  
CENTER FRONT FOLD

14B

12B



13B

14C

LENGTHEN OR SHORTEN HERE  
 RALLONGER OU RACCOURCIR ICI  
 ALARGAR O ACORTAR AQUI

13B

## MEASUREMENTS

CADERA

TOUR DE  
HANCHESFINISHED  
HIP

FINISHED HIP	TOUR DE HANCHES	MEASUREMENTS CADERA
SIZE		
46	47	$1\frac{1}{4}$ " 120cm
48	49	$3\frac{1}{4}$ " 126cm
50	52"	$1\frac{1}{2}$ " 132cm
52	54	$3\frac{1}{4}$ " 138cm
54	56	$1\frac{1}{2}$ " 144cm
56	59"	$3\frac{1}{4}$ " 150cm
58	61	$1\frac{1}{2}$ " 156cm
60	63	$3\frac{1}{4}$ " 162cm

13C

12C

	40	42	44	46	48	50	52	54	56	58	60
1	165 1/4	166 1/4	166 1/4	166 1/4	166 1/4	166 1/4	166 1/4	166 1/4	166 1/4	166 1/4	166 1/4
2	68	68	68	68	68	68	68	68	68	68	68
3	36 1/4	37 3/4	39 1/2	41	43 1/2	45 1/2	48	50 1/2	52 3/4	55 1/4	57 1/2
4	96	96	100	104	110	116	122	128	134	140	146
5	30 3/4	32 1/2	34	36 1/4	38 3/4	41	43 1/2	45 1/2	48	50 1/2	
6	78	82	86	92	98	104	110	116	122	128	
7	40 1/4	41 3/4	43 1/2	45 1/2	48	50 1/2	52 3/4	55 1/4	57 1/2	60	
8	102	106	110	116	122	128	134	140	146	152	
9	16 3/4	17	17 1/4	17 1/4	17 1/2	17 3/4	18	18 1/4	18 1/2	18 1/2	
10	42,5	43	43,5	44	44,5	45	45,5	46	46,5	47	
11	24	24	24	24	24 1/2	24 1/2	24 1/2	24 3/4	24 3/4	24 3/4	
12	61	61	61	61	62	62	62	63	63	63	
13	15	15 1/2	15 3/4	16 1/4	16 1/2	17	17 1/4	17 3/4	18 1/4	18 1/2	
14	38	39	40	41	42	43	44	45	46	47	
15	41	41 1/2	41 1/2	41 1/2	41 3/4	41 3/4	41 3/4	42 1/4	42 1/2	42 1/2	
16	104	104	105	105	105	106	106	106	107	108	
17	18 1/4	18 1/2	19	19 1/4	19 3/4	20 1/4	20 1/2	21	21 1/4	21 3/4	22 1/4
18	47	48	49	50	51	52	53	54	55	56	
19	11 1/8	11 1/2	11 7/8	12 1/4	12 3/4	13	13 1/2	14 1/4	14 1/2	14 3/4	15
20	29	30	31	32	33	34	35	36	37	38	
21	11 1/2	11 7/8	12 1/4	12 3/4	13 1/2	14 1/2	15	15 3/4	16 1/2	17 1/4	18 1/4
22	30	31	32	34	36	38	40	42	44	46	

englisch

1. Height
2. Bust
3. Waist
4. Hip
5. Back length
6. Sleeve length
7. Neck width
8. Side leg length
9. Front waist length
10. Bust point
11. Upper arm circumf.

For dresses, blouses, coats and jackets select size according to bust measurement, for trousers and skirts according to hip measurement!

All burda patterns are prepared with ease allowance appropriate for style in question.

fran ais

1. Stature
2. Tour de poitrine
3. Tour de taille
4. Tour des hanches
5. Long. du dos
6. Longueur de manche
7. Tour de cou
8. Long. c tD  
pantalon
9. Long. taille devant
10. Profondeur  
de poitrine
11. Tour du bras

Robes, corsages, manteaux et vestes  
seront choisis d'apr s votre tour de poitrine  
les pantalons et les jupes d'apr s votre  
tour de hanches!

Tous les patrons sont ttablis avec l'aisance  
nOcossaire selon le genre du mod le.

13D

espaol

1. Estatura
2. Contorno busto
3. Contorno cintura
4. Contorno cadera
5. Largo espalda
6. Largo manga
7. Contorno cuello
8. Largo lateral  
del pantal n
9. Largo talla delantero
10. Altura de pecho
11. Cont. de brazo

La talla para los vestidos, blusas, abrigos  
y chaquetas, se determina de acuerdo con  
el contorno del busto. Los pantalones y las  
faldas, de acuerdo con el contorno de las  
caderas.

En el patr n-Burda se incluyen los  
m/Ergenes para la holgura necesaria.

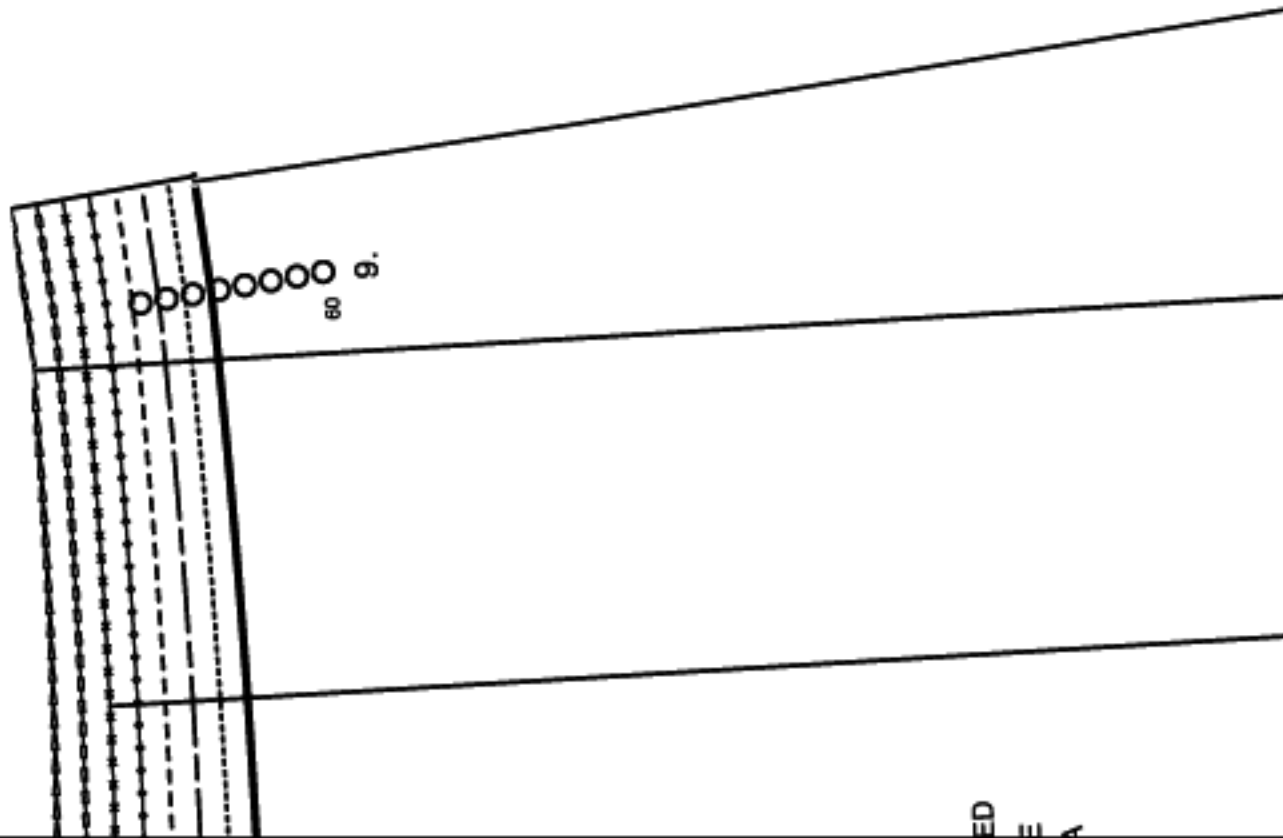
12E

14E



15A

14B



15B

ED  
E  
A

15B

46

60

14

SIDE SKIRT PANEL  
COTE DE JUPE

FALDA LATERAL



SEAM ALLOWANCE INCLU  
AVEC VALEUR DE COUTU  
CON MARGEN DE COSTUR

5/8"  
(1.5cm)

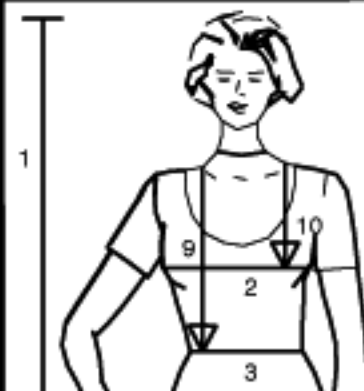
6024

14C

15C

15C

Size Taille Talla		32	34	36	38
1	inches	66 1/4	66 1/4	66 1/4	66 1/4
	cm	168	168	168	168
2	inches	30	31 1/2	33	34 3/4
	cm	76	80	84	88
3	inches	23	24 1/2	26	27 3/4
	cm	58	62	66	70
4	inches	32 1/2	34	35 1/2	37
	cm	82	86	90	94
5	inches	15 3/4	16	16 1/4	16 1/2
	cm	40	40,5	41	41,5
6	inches	23 1/4	23 1/4	23 1/4	23 3/4
	cm	59	59	59	60
7	inches	13	13 1/2	14 1/4	14 1/2
	cm	33	34	35	36
8	inches	39 3/4	40 1/4	40 1/4	40 3/4
	cm	101	102	102	103
9	inches	16 1/2	17	17 1/4	17 3/4
	cm	42	43	44	45
10	inches	9 1/2	9 7/8	10 1/4	10 3/4
	cm	24	25	26	27
11	inches	9 7/8	10 1/4	10 3/4	11 1/8
	cm	25	26	27	28

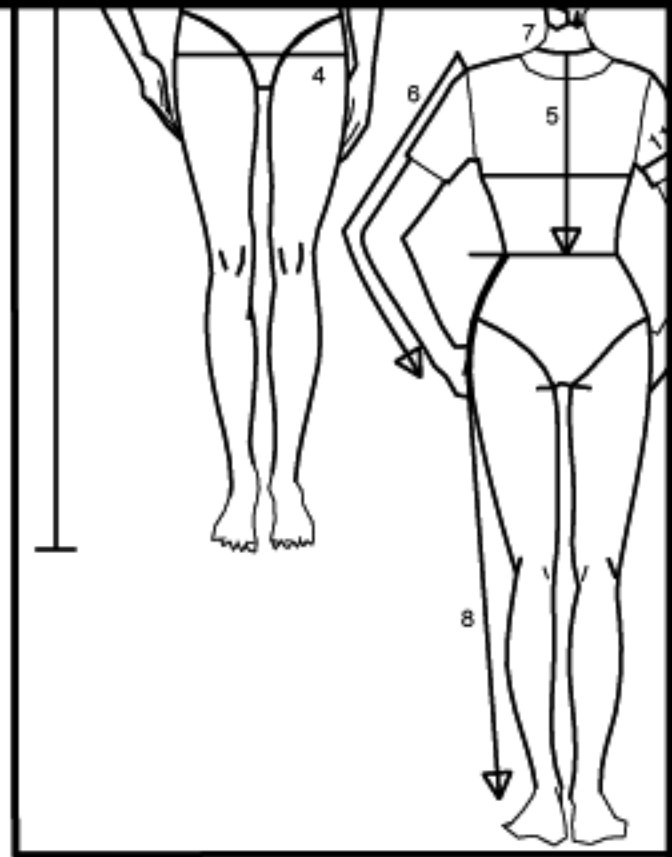


14D

15D



15D



14E