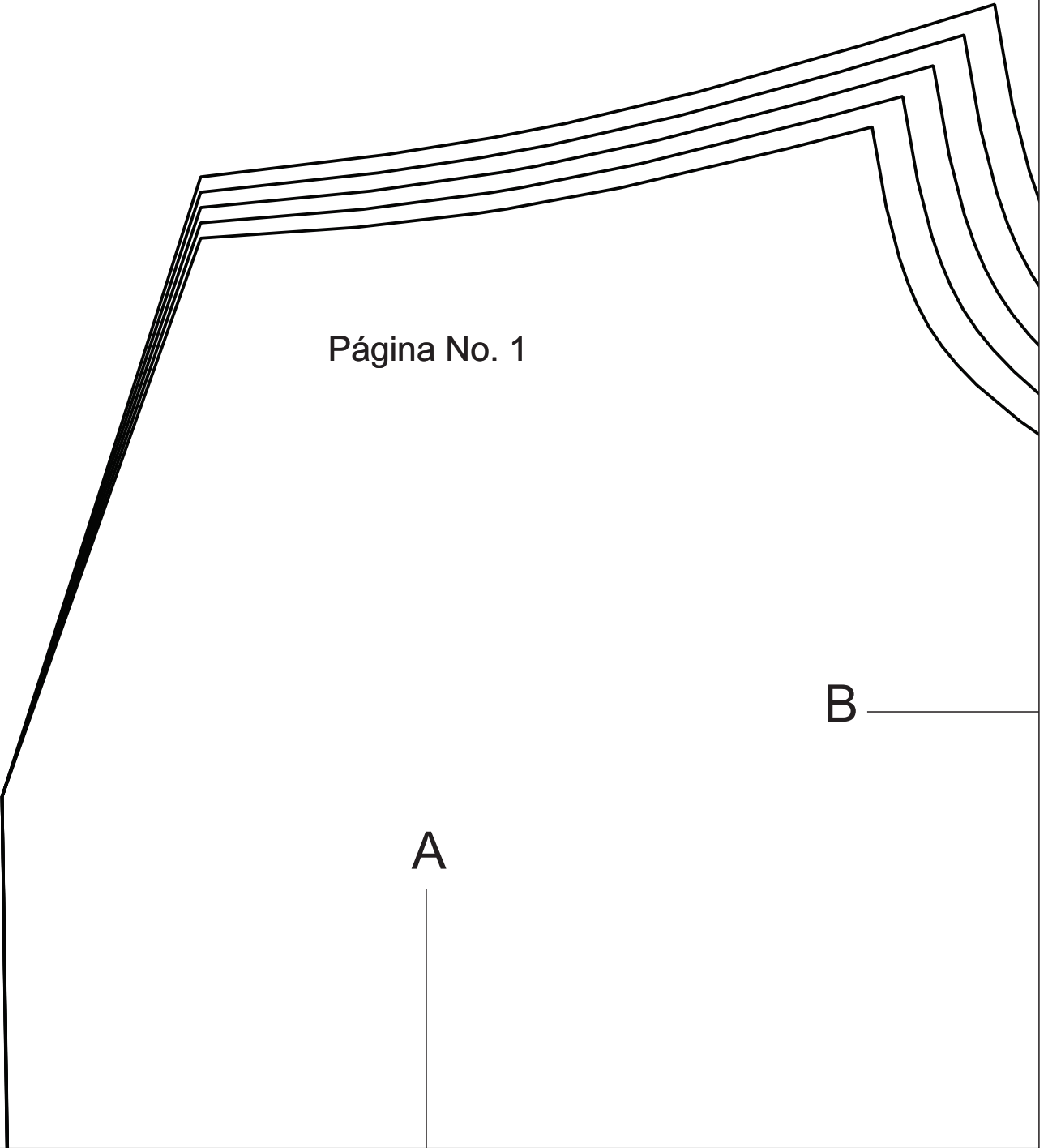


Página No. 1

A

B

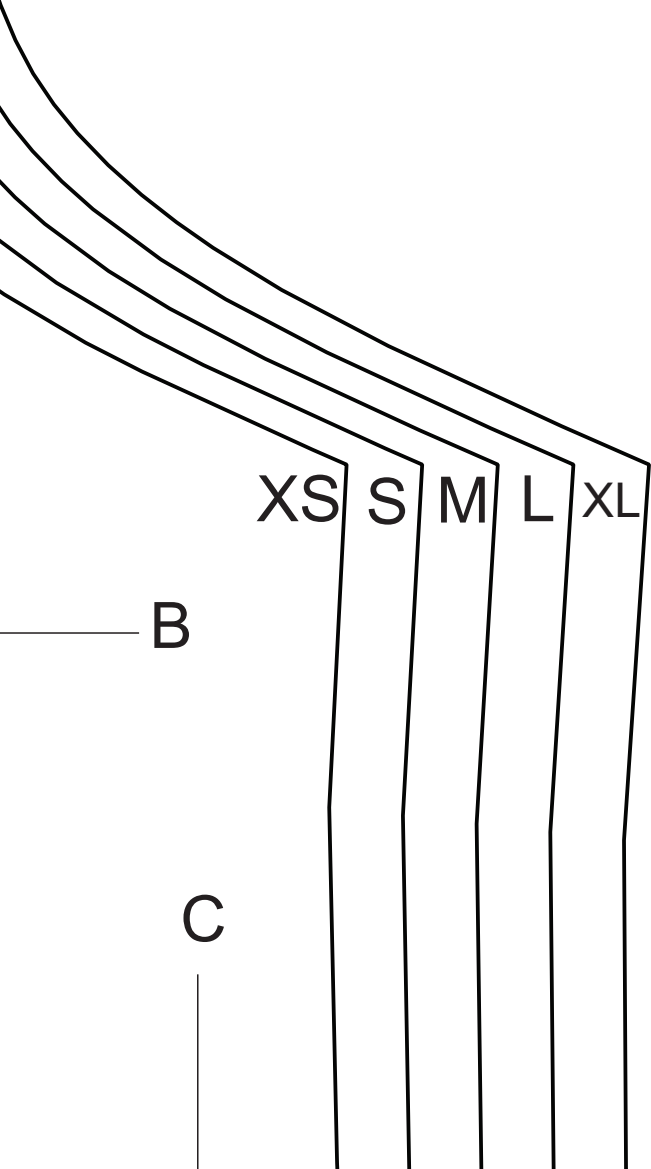


A

ACADEMIA DISEÑO CONFECCIÓN ALAMODA
Blusa escote barco
Delantero
Cortar 1 vez

D

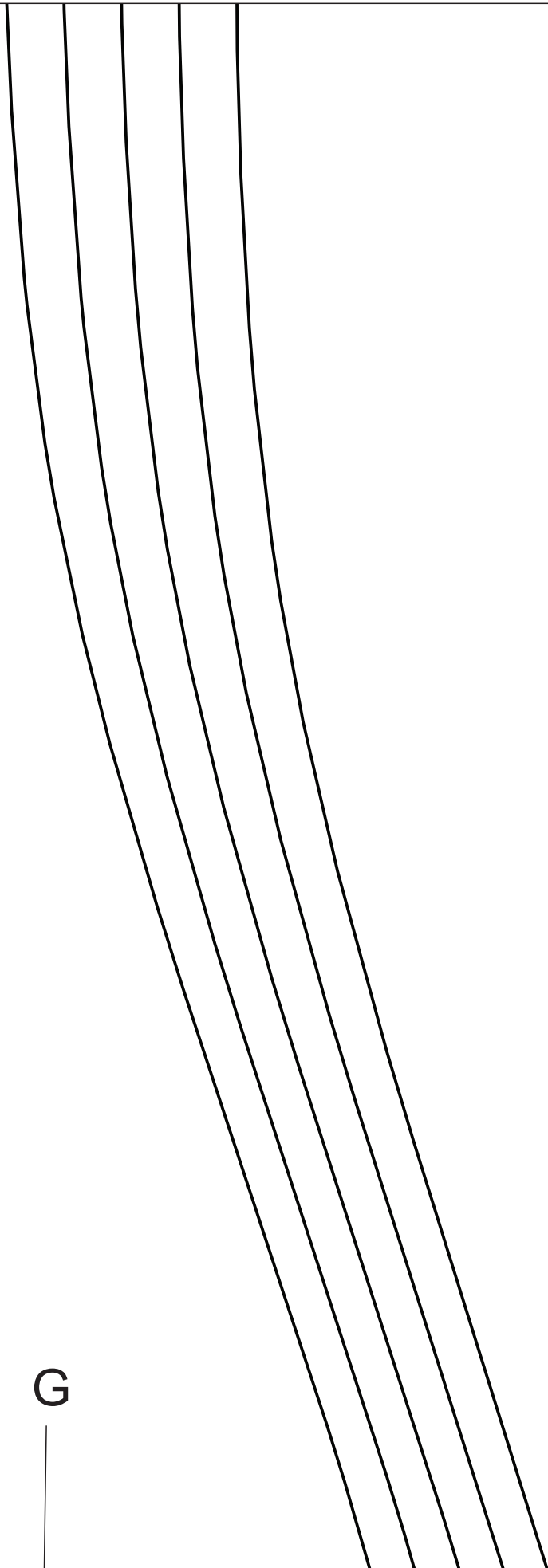
E



C

D

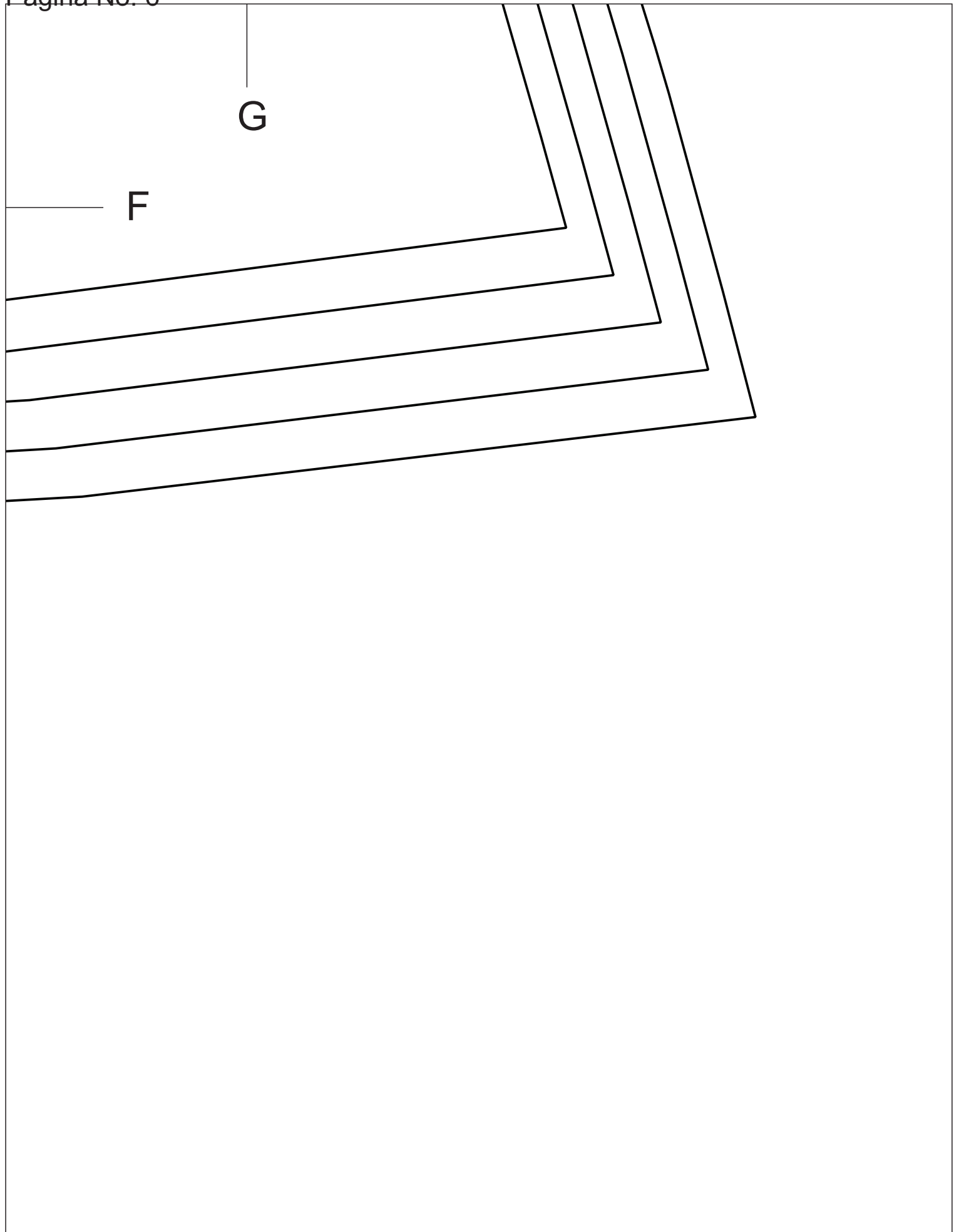
G



E

F

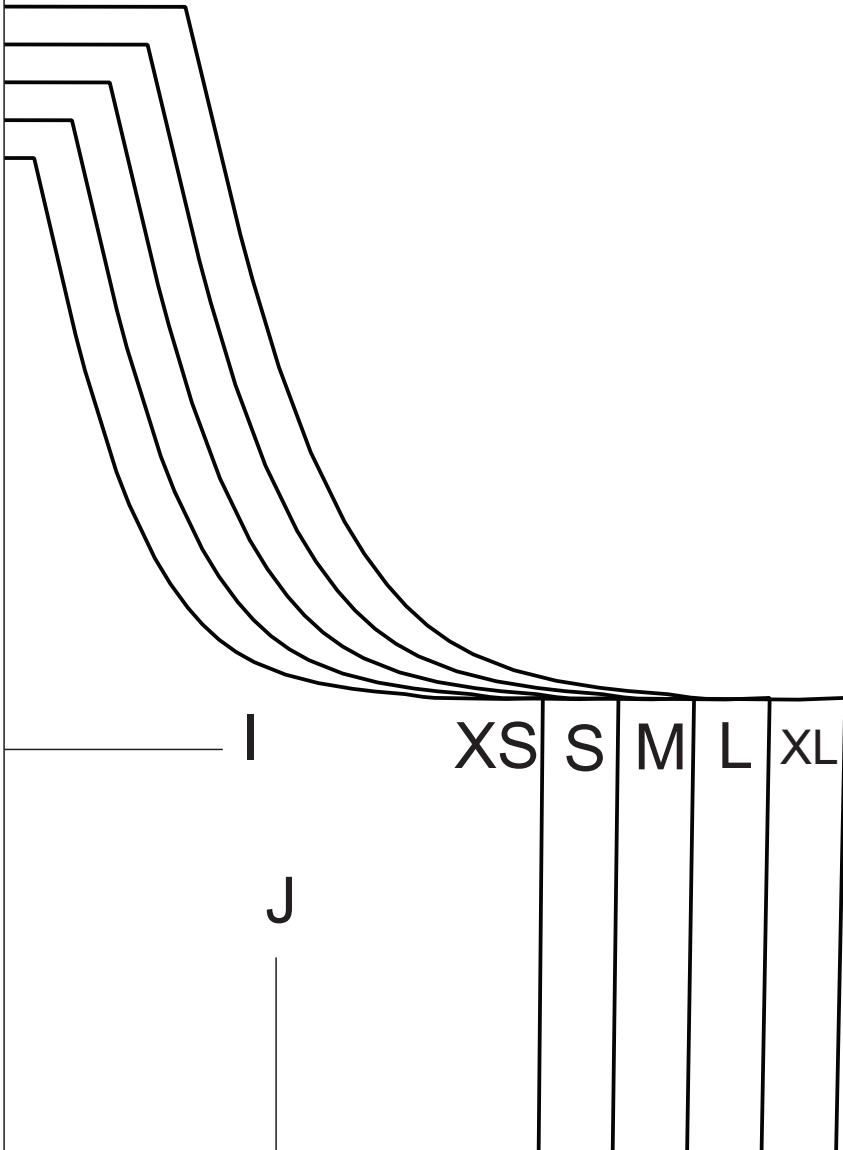




| |
|--|
| |
| |
| |
| |

H

I



H

ACADEMIA DISEÑO CONFECCIÓN ALAMODA
Blusa escote barco
Posterior
Cortar 1 vez

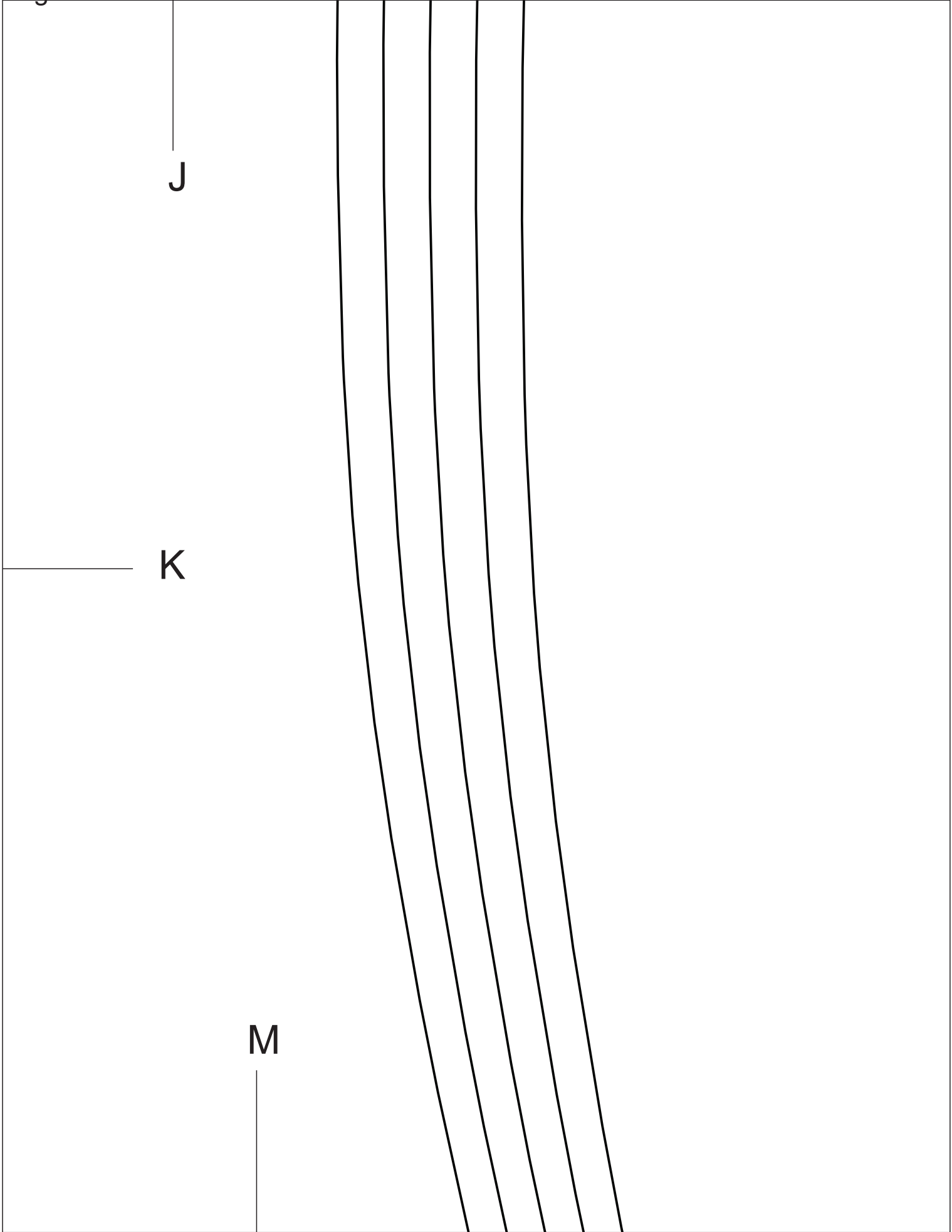
K

L

J

K

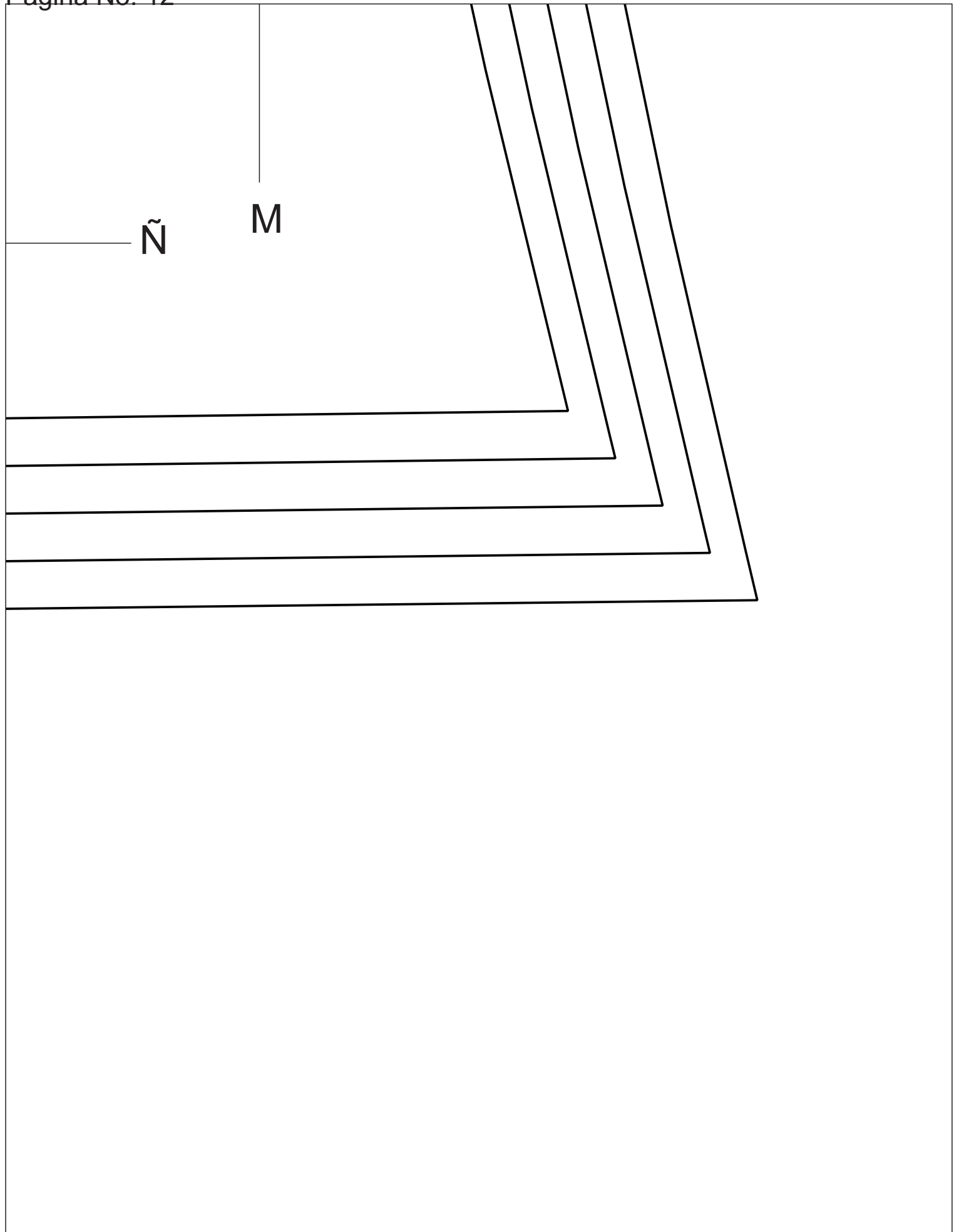
M

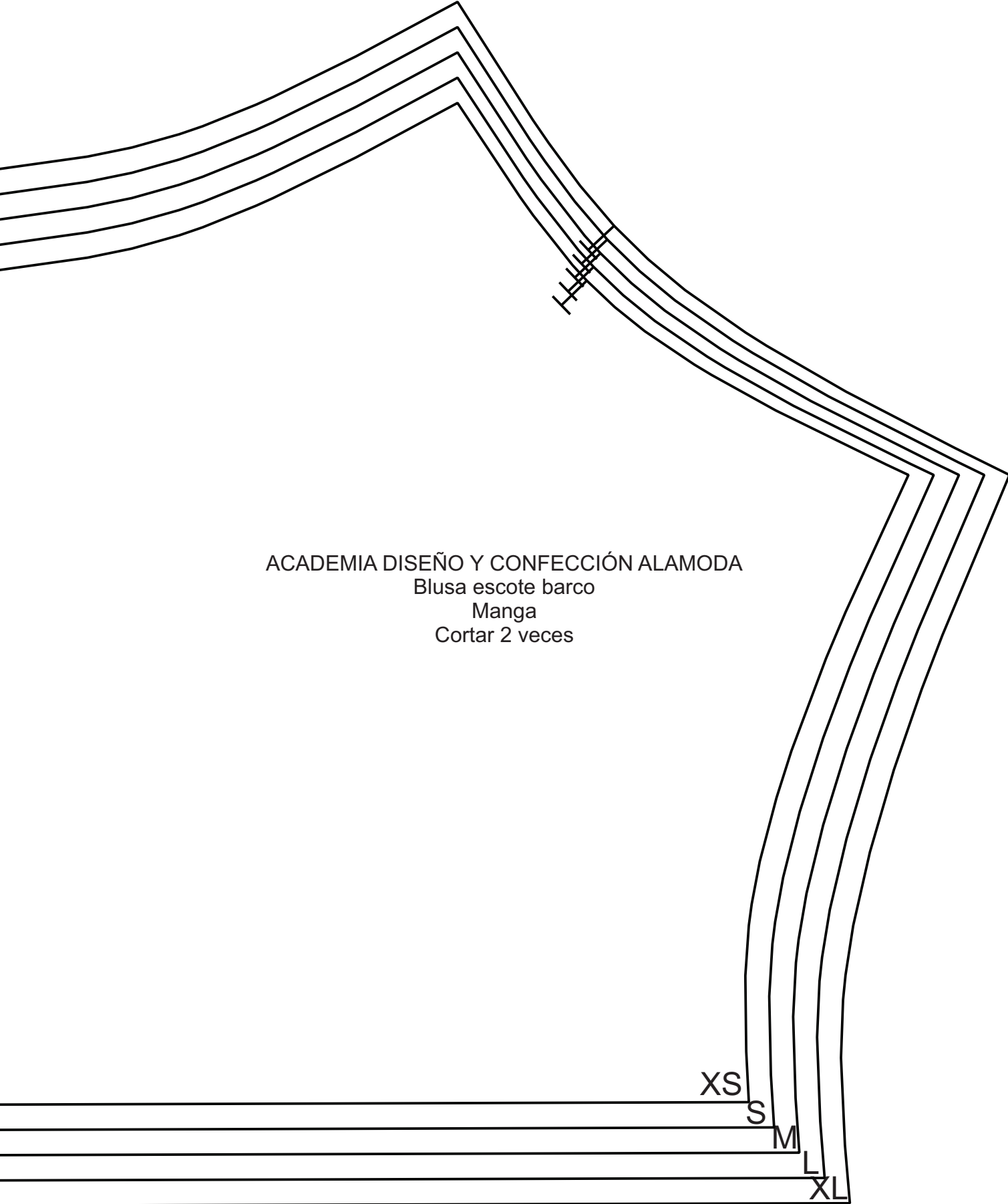


L

Ñ

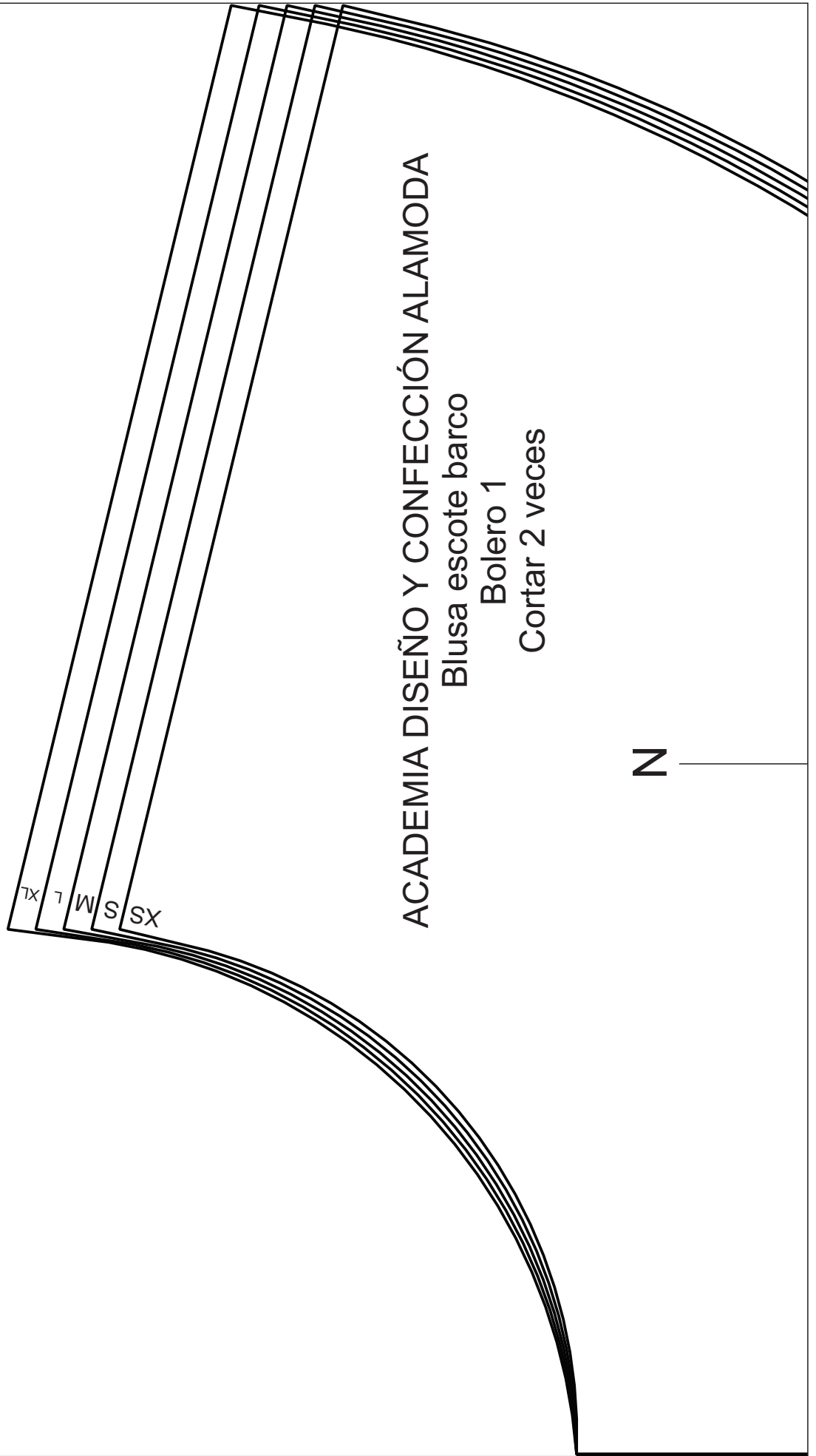
| |
|--|
| |
| |
| |
| |
| |





ACADEMIA DISEÑO Y CONFECCIÓN ALAMODA
Blusa escote barco
Manga
Cortar 2 veces

XS
S
M
L
XL



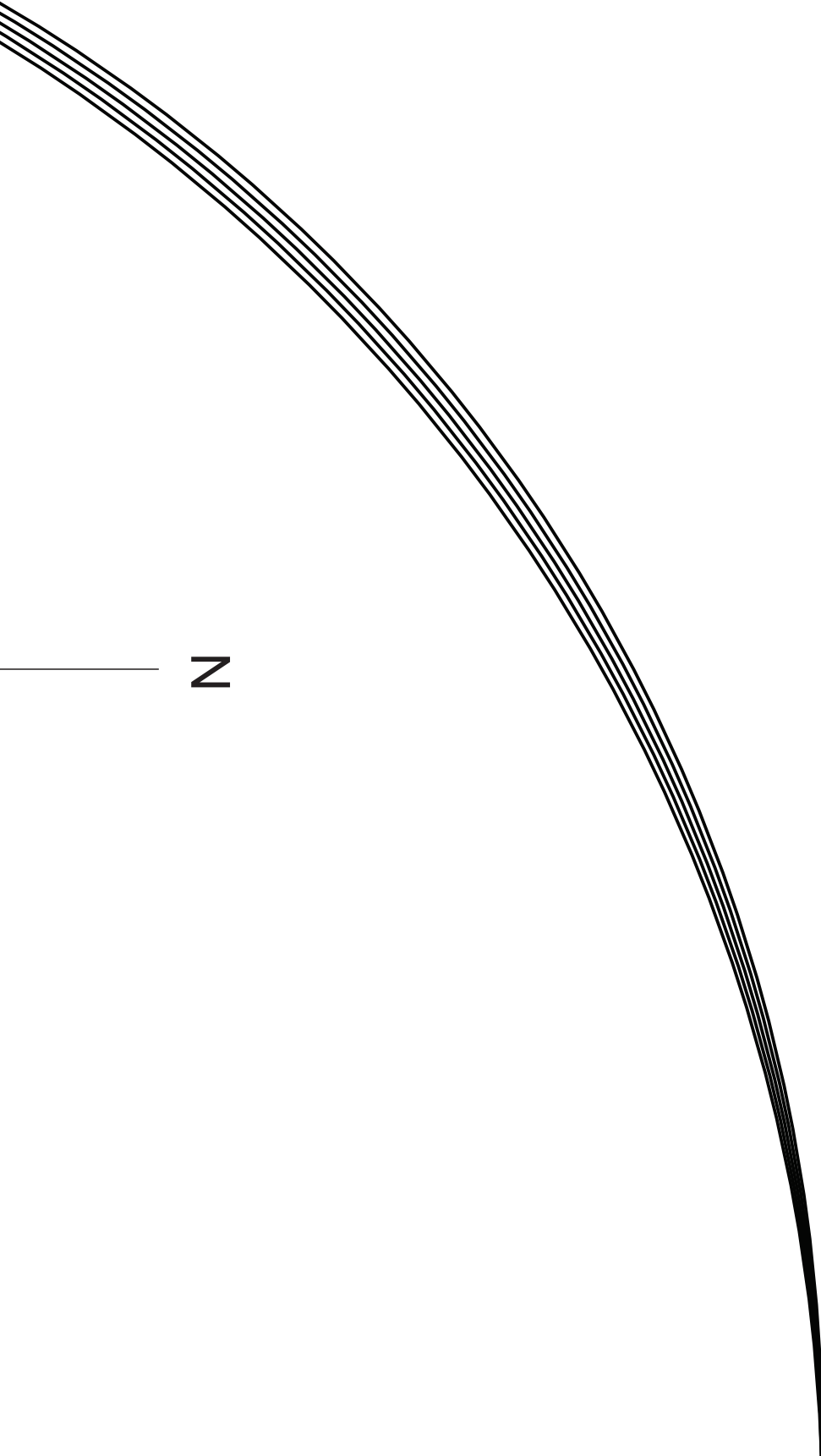
ACADEMIA DISEÑO Y CONFECCIÓN ALAMODA

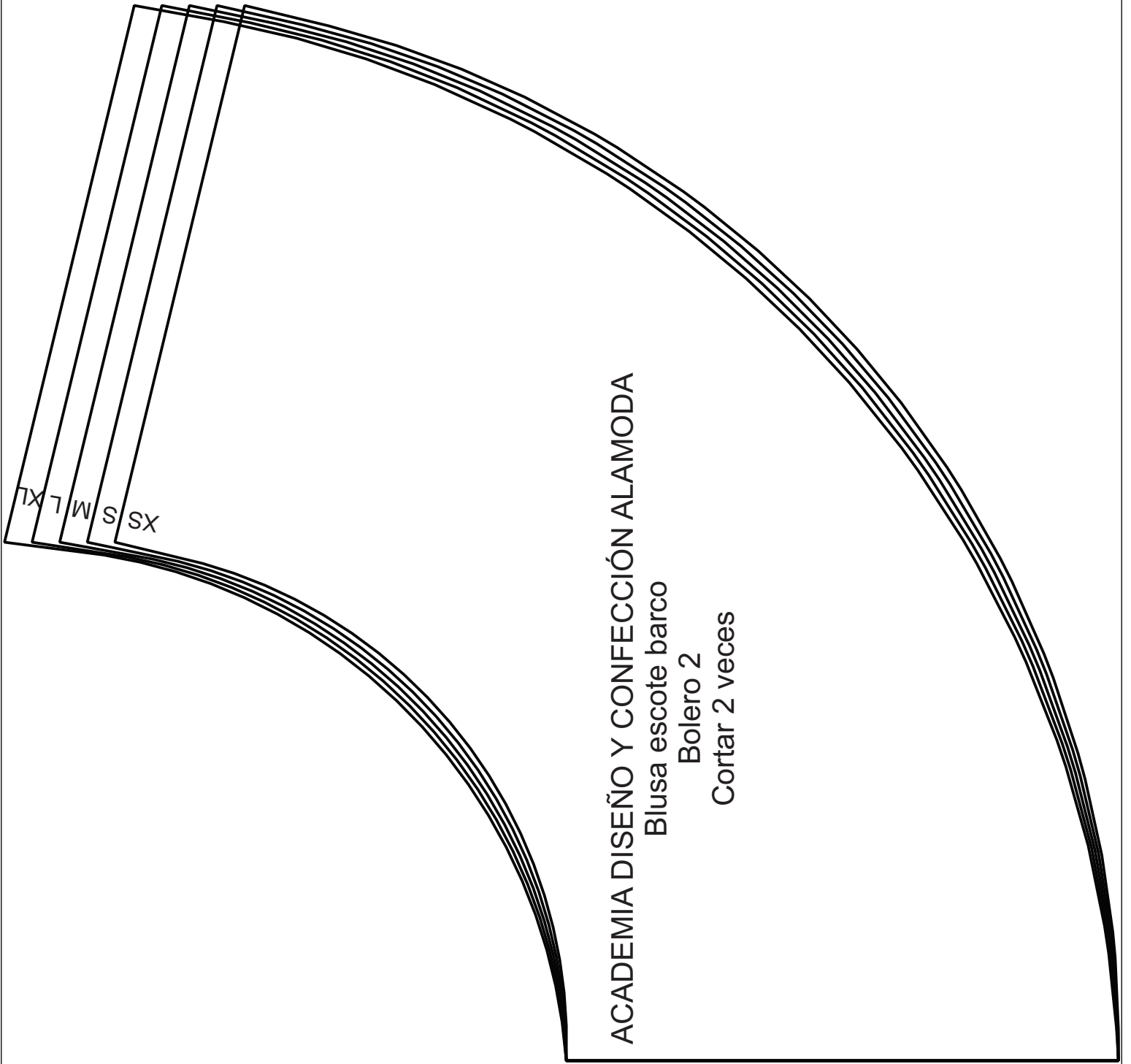
Blusa escote barco

Bolero 1

Cortar 2 veces

N



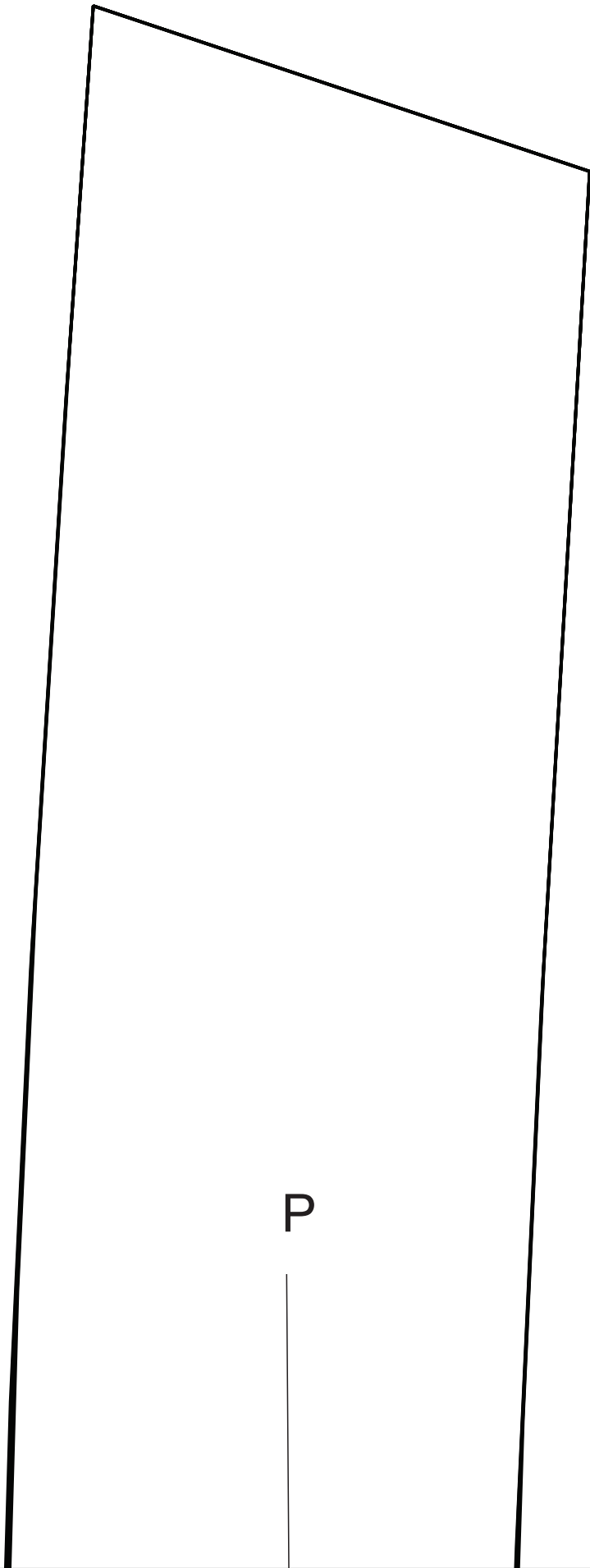


ACADEMIA DISEÑO Y CONFECCIÓN ALAMODA

Blusa escote barco

Bolero 2

Cortar 2 veces



P

| | |
|----|-------------|
| XL | |
| L | |
| M | |
| S | |
| XS | Doblez tela |

ACADEMIA DISEÑO CONFECCIÓN ALAMODA

Blusa escote barco

Cuello

cortar 2 veces



ACADEMIA DISEÑO Y CONFECCIÓN ALAMODA

Blusa escote barco

Falso escote

Cortar 1 vez

