

Blusa Oriental

Tamanho 38 / 40

Referência	Blusa Oriental
Data	23/06/2016
Tamanhos	Tam 38/40
Sugestão de Tecido	Tafetá Bordado
Metragem	0,90m com 1,40m de Largura
Material	20cm de Entretela, Três Pressões e um zipér invisível de 50cm.

OBS: Para o tamanho 38 cortar sem deixar margem de costura
Para o tamanho 40 cortar deixando 2cm para a costura

Desenho Técnico

Frente

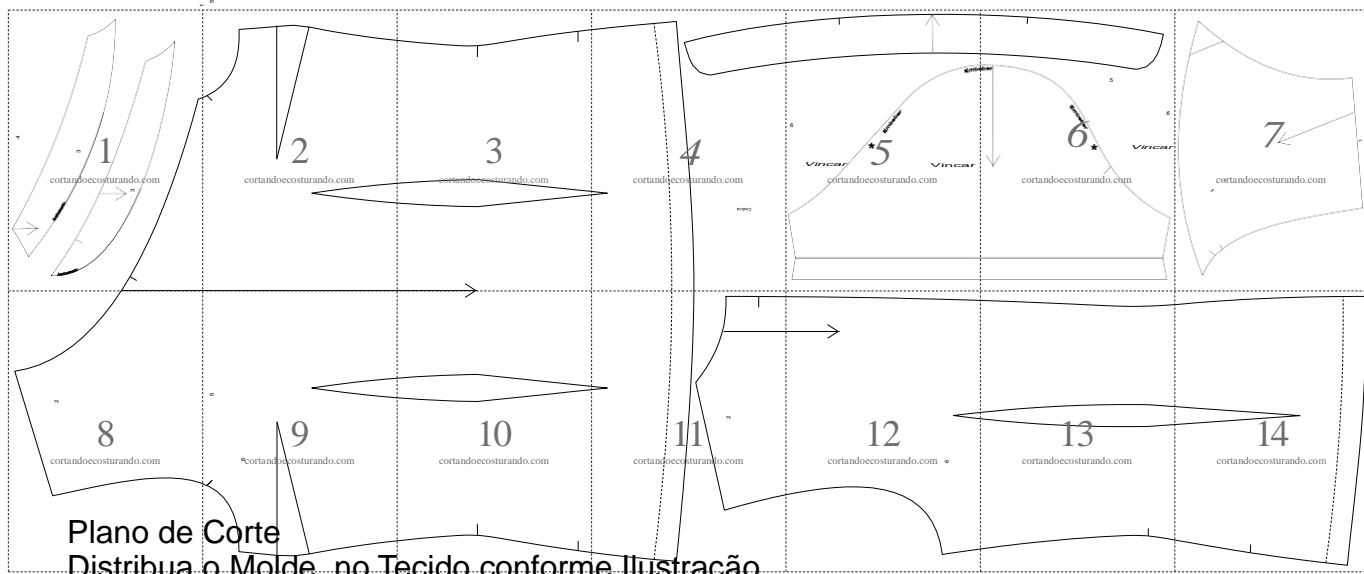


Costas

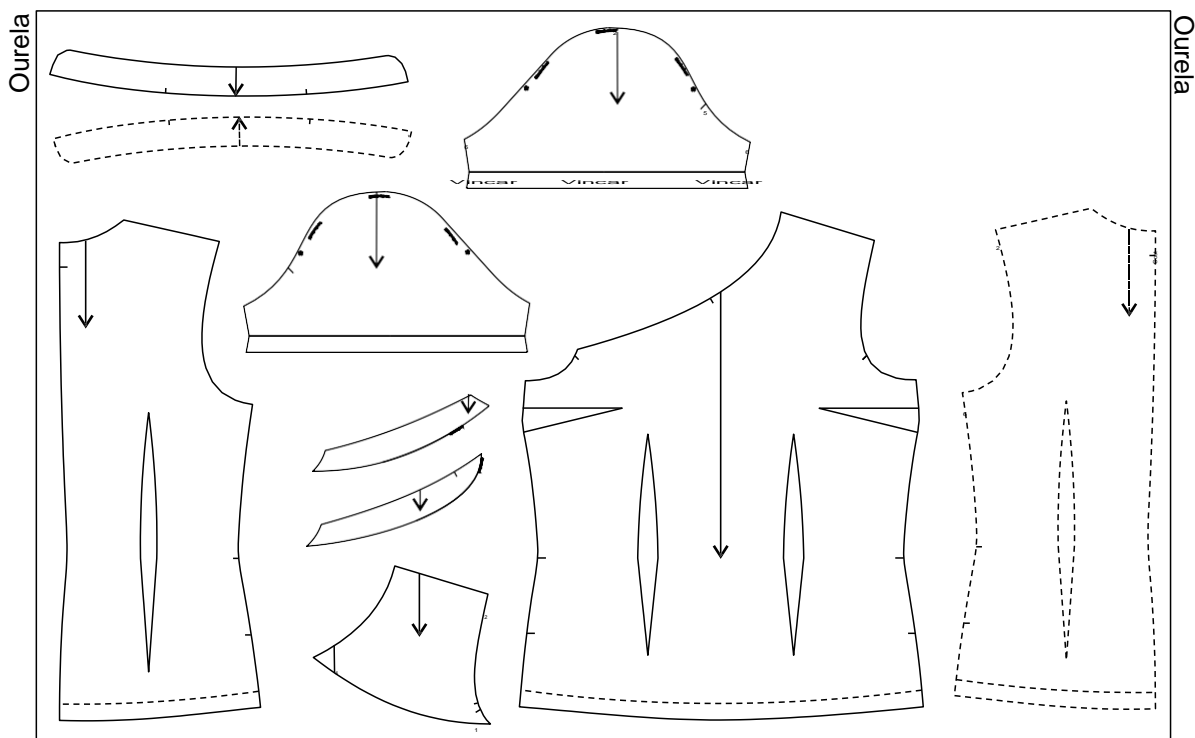


Grade Completa

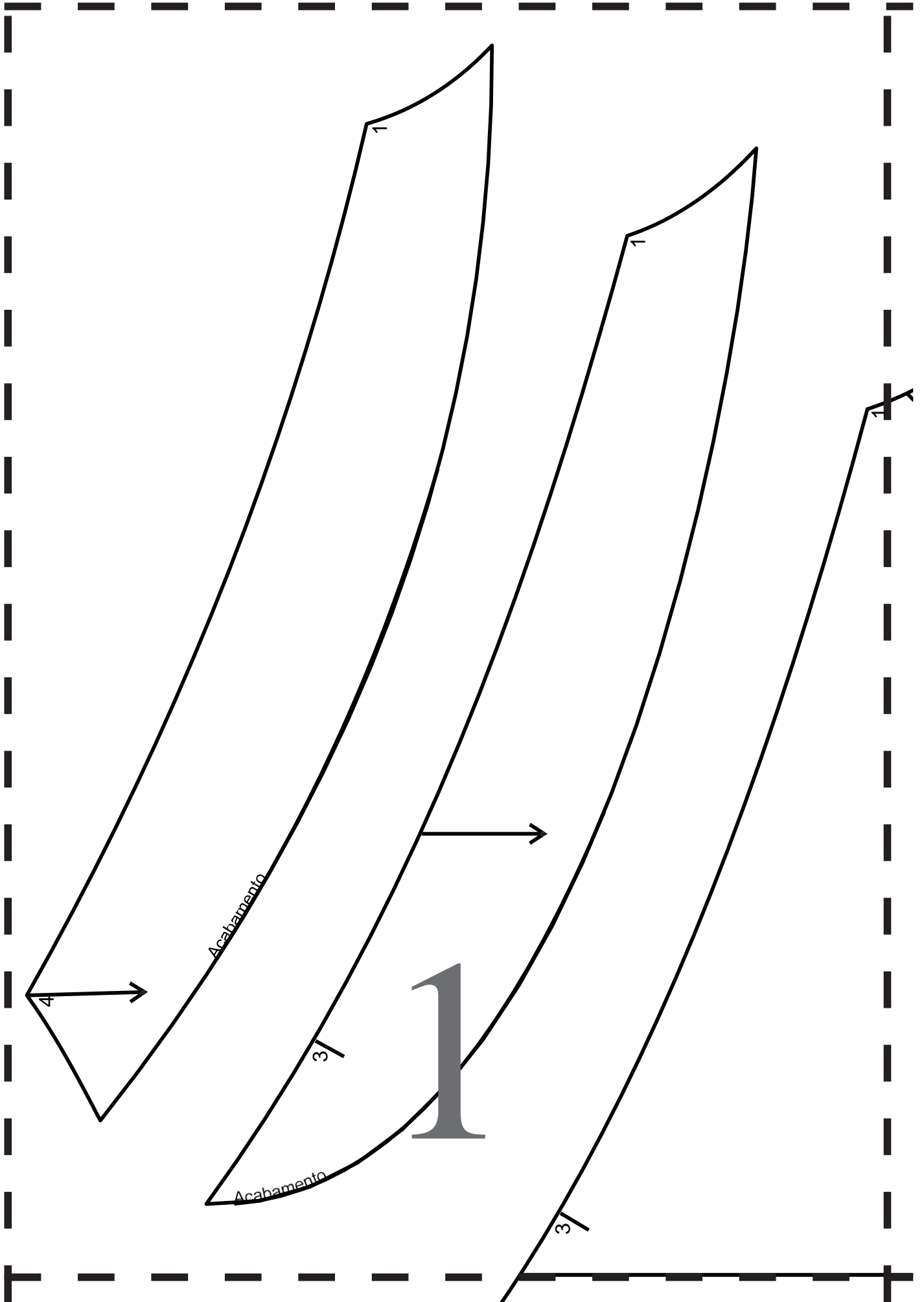
Imprimir as 14 folhas de papel A4 da Grade e colar conforme Ilustração.

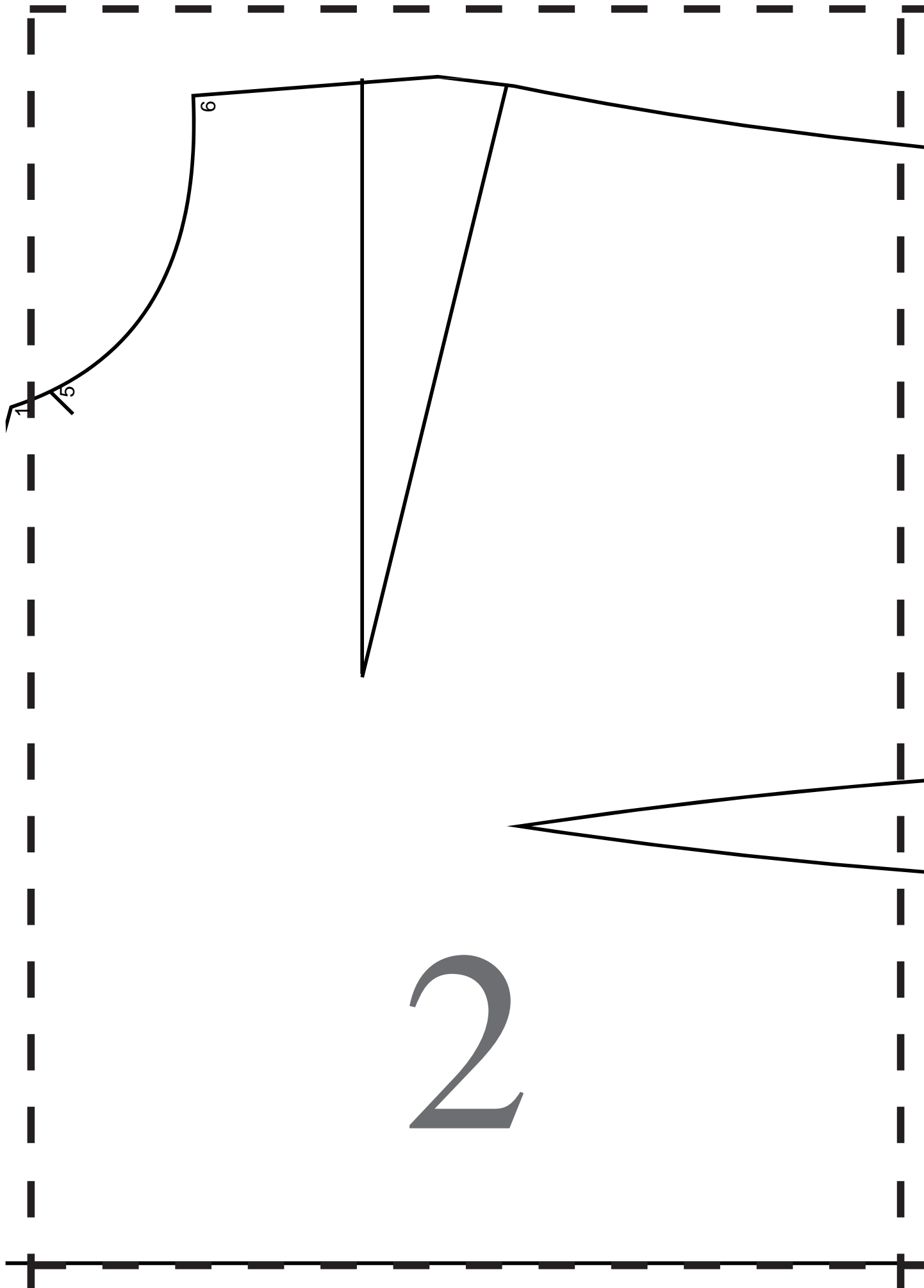


Plano de Corte
Distribua o Molde no Tecido conforme Ilustração.



1,40m



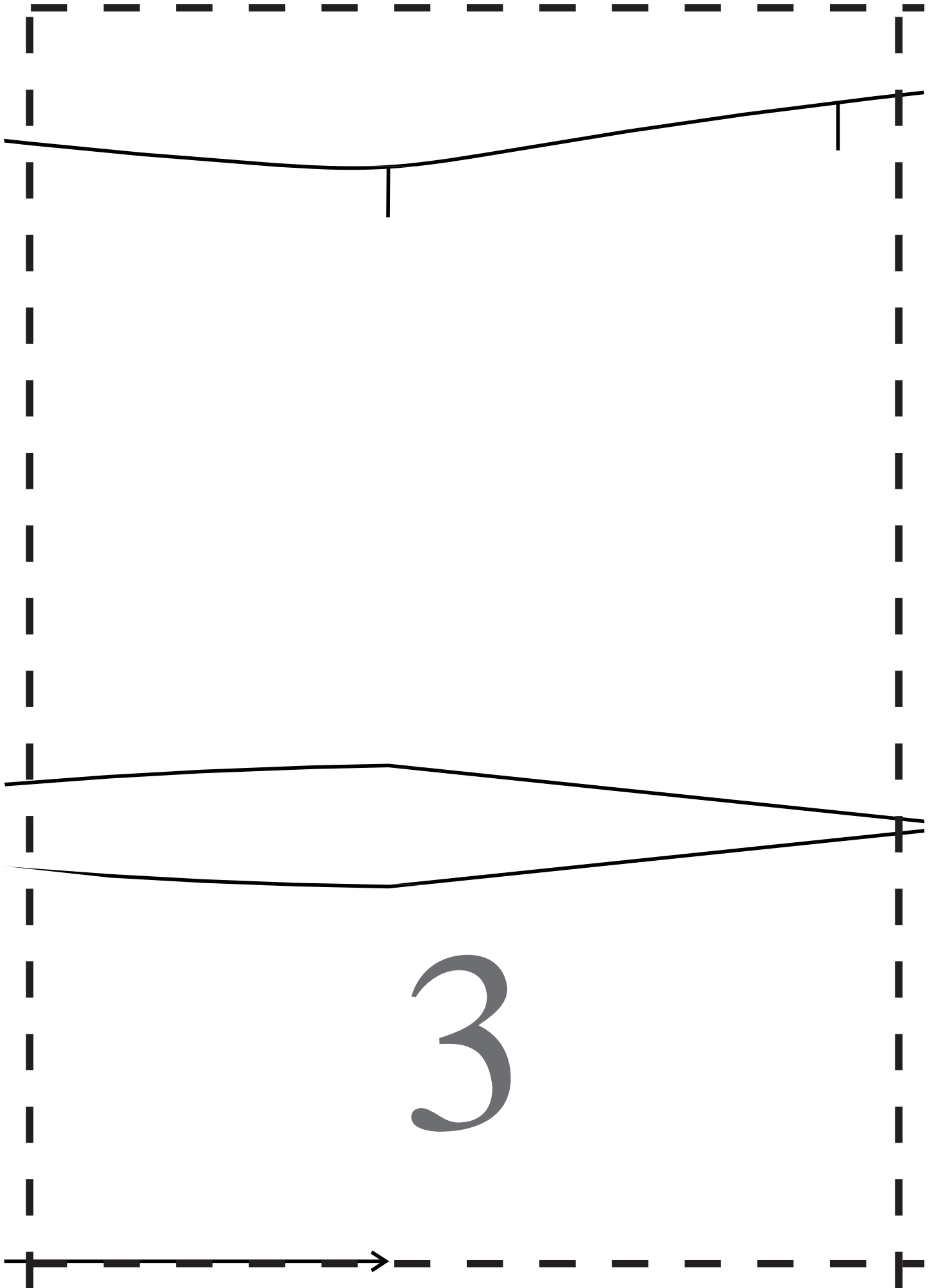


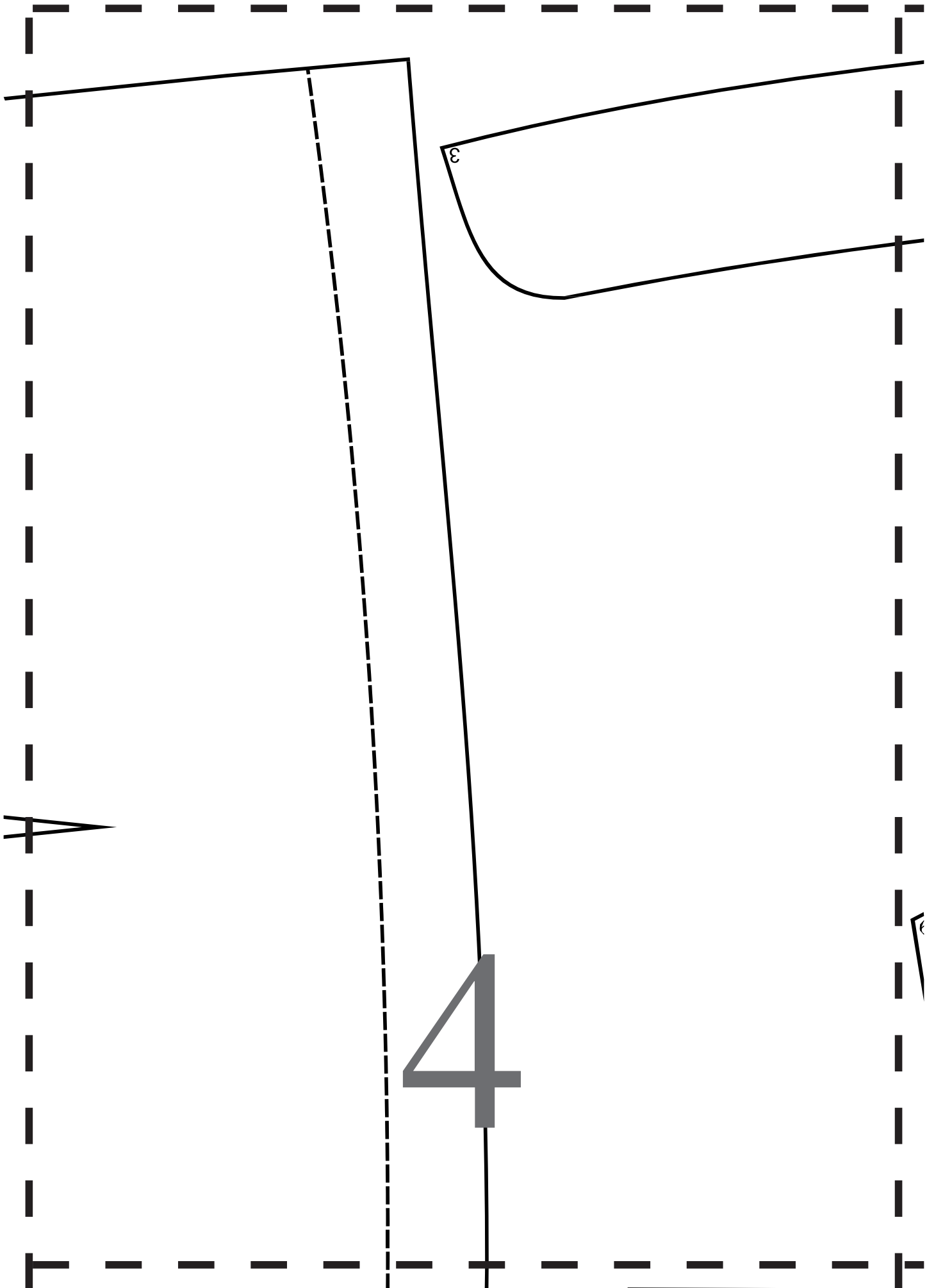
2

6

5

1

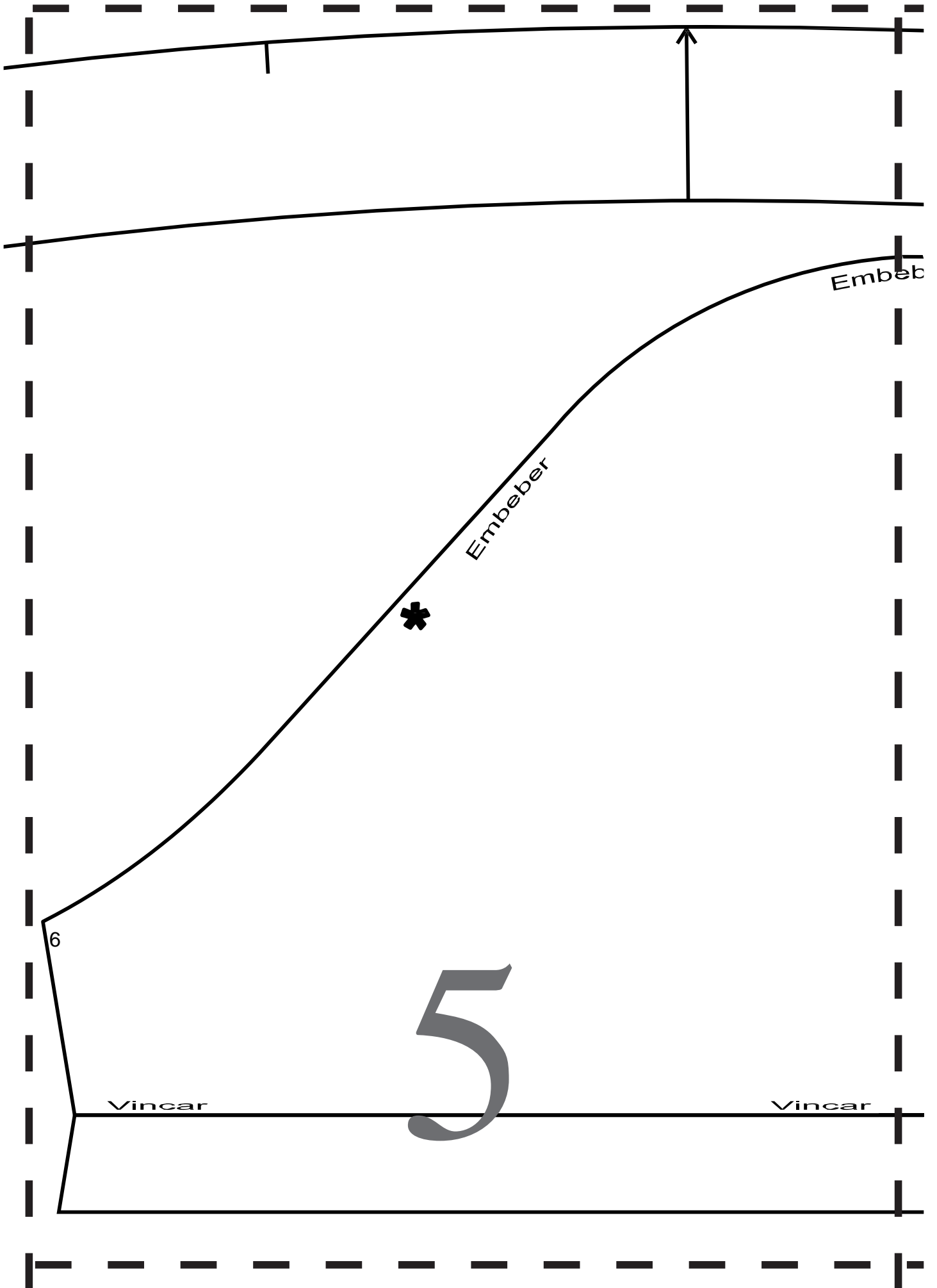




3

4





Embeb

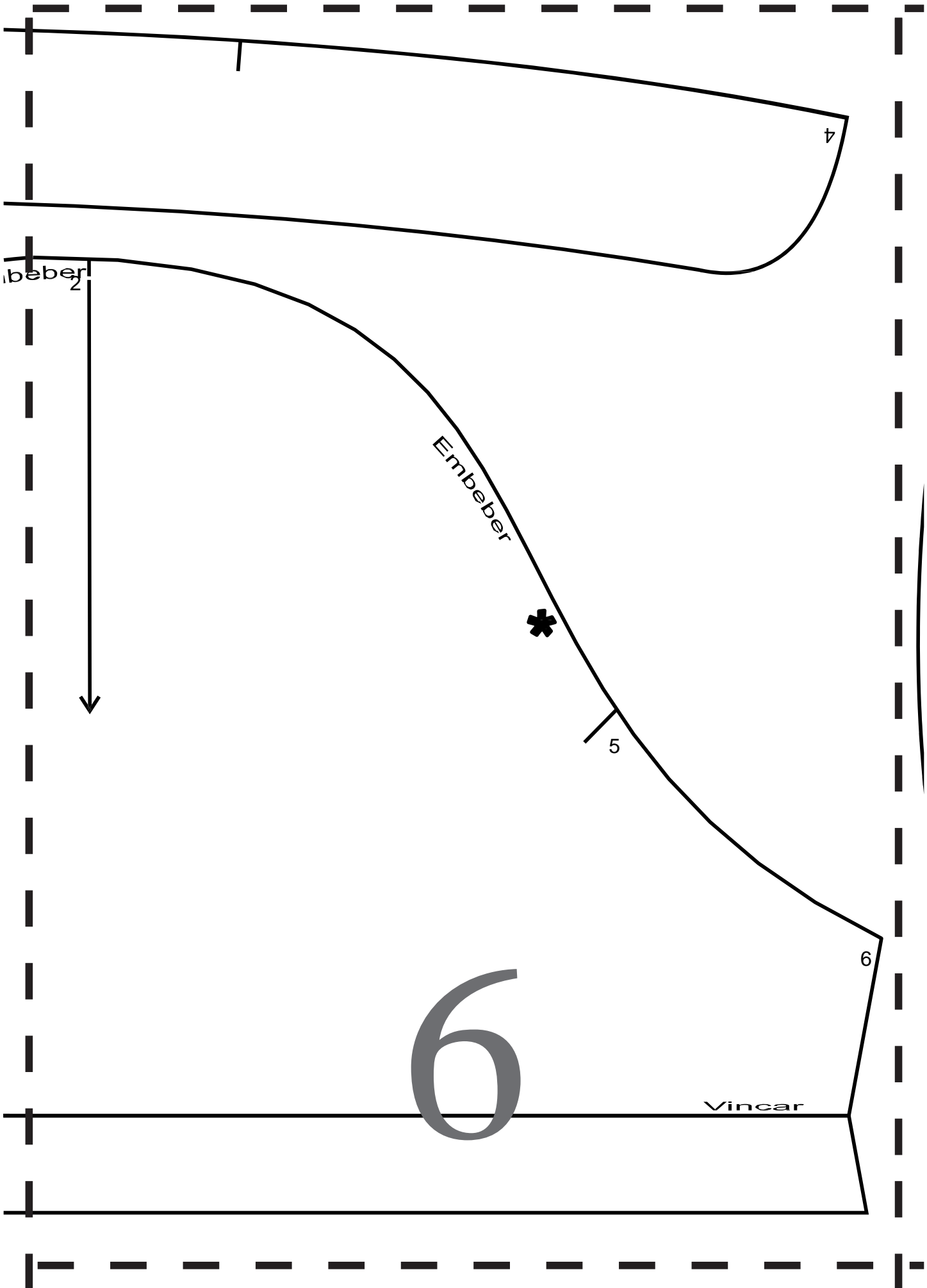
Embeber

Vincar

Vincar

6

5



beber
2

Embeber

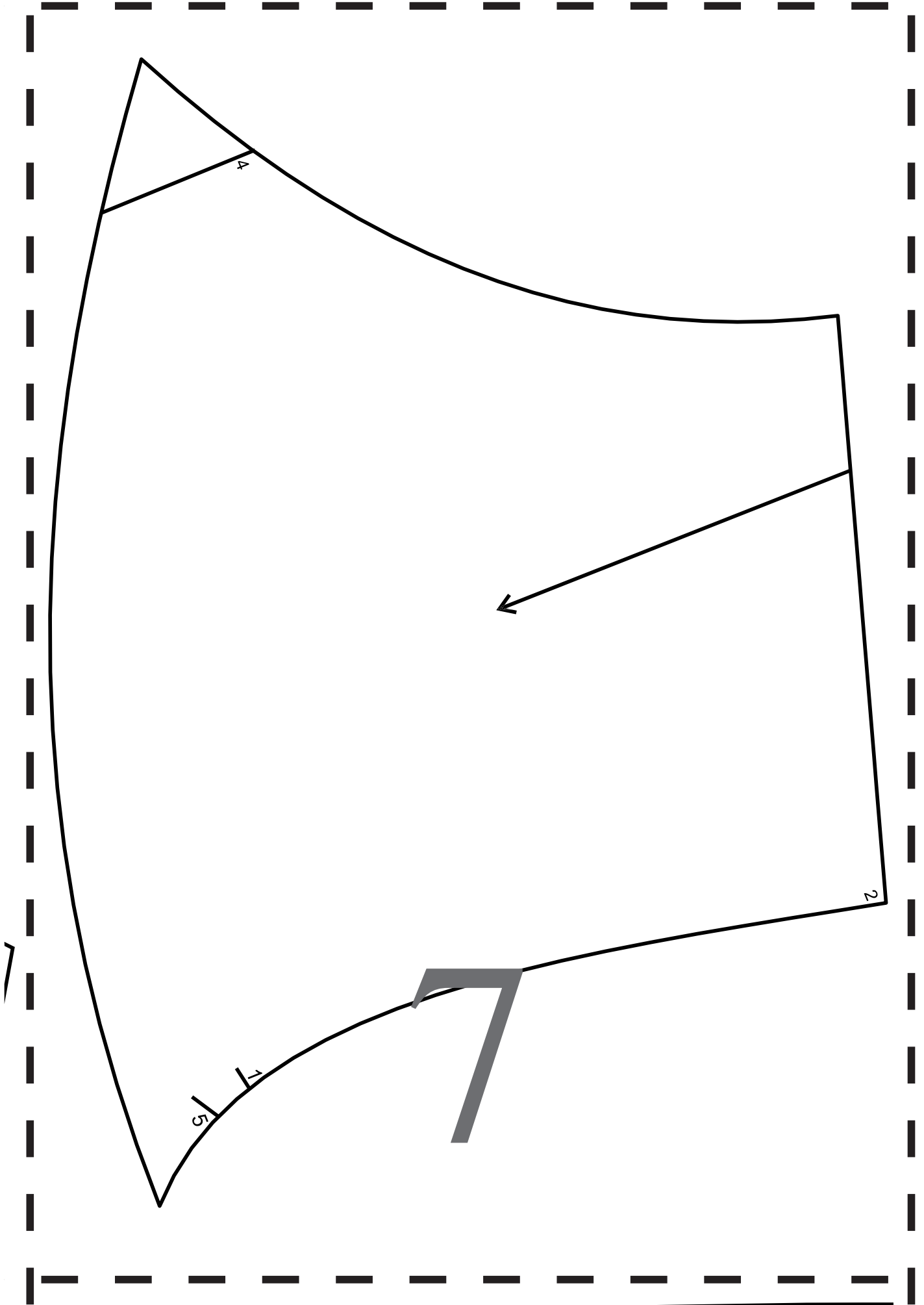


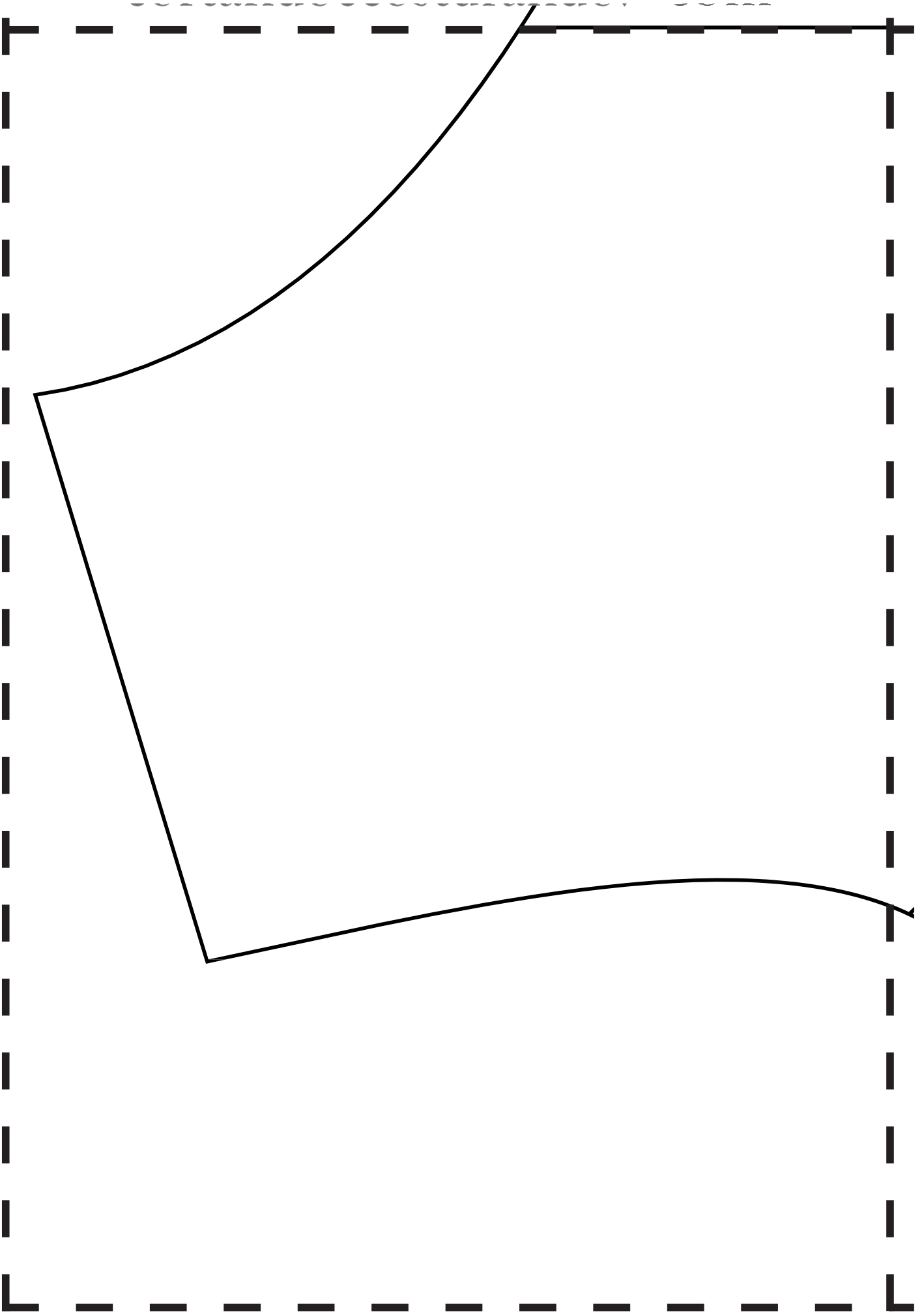
5

6

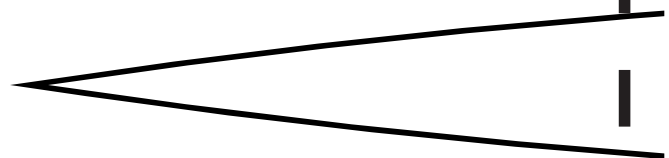
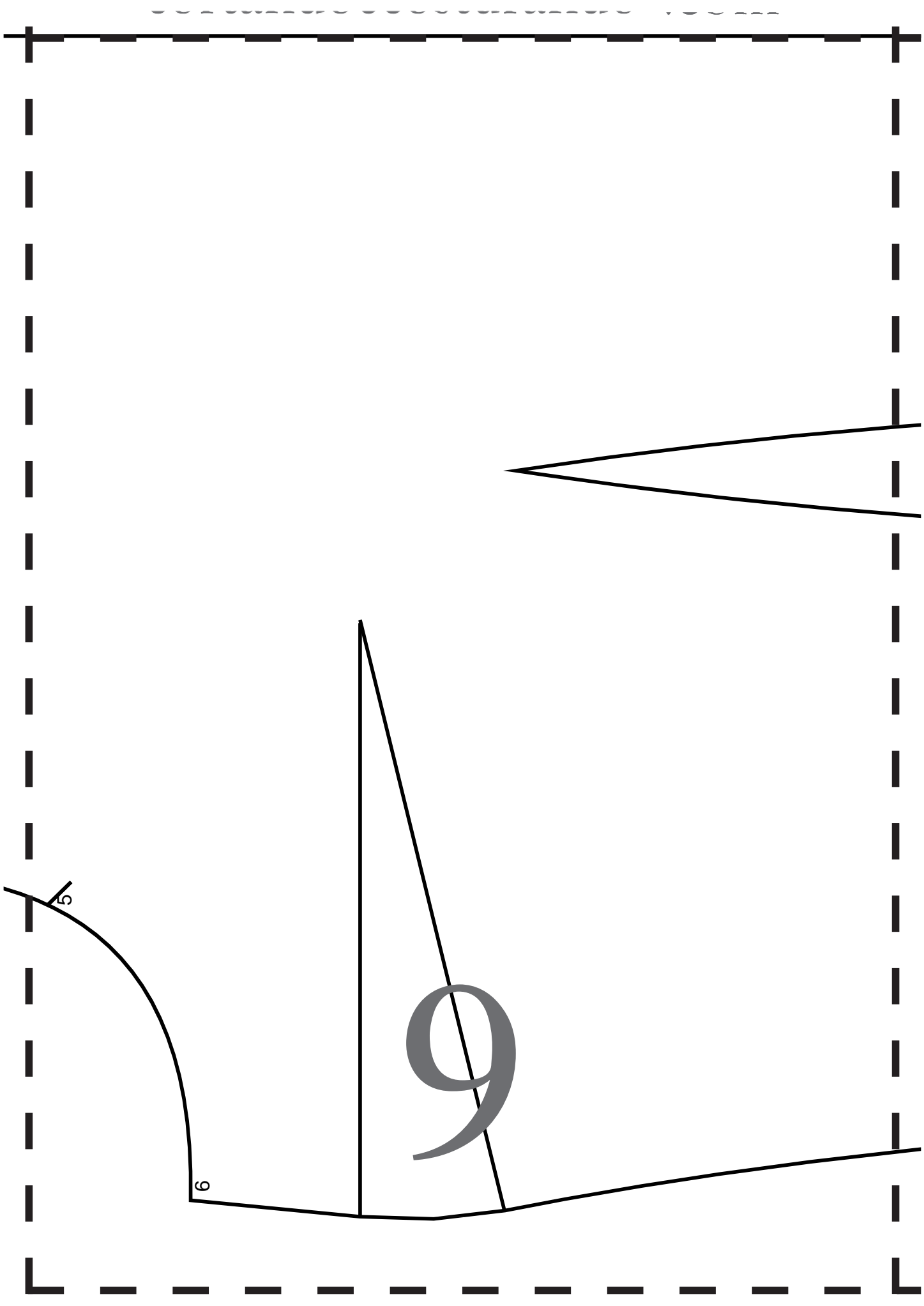
Vincar

6

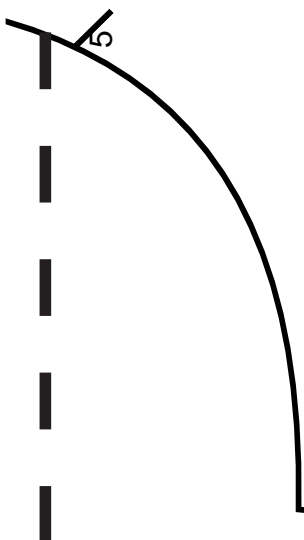


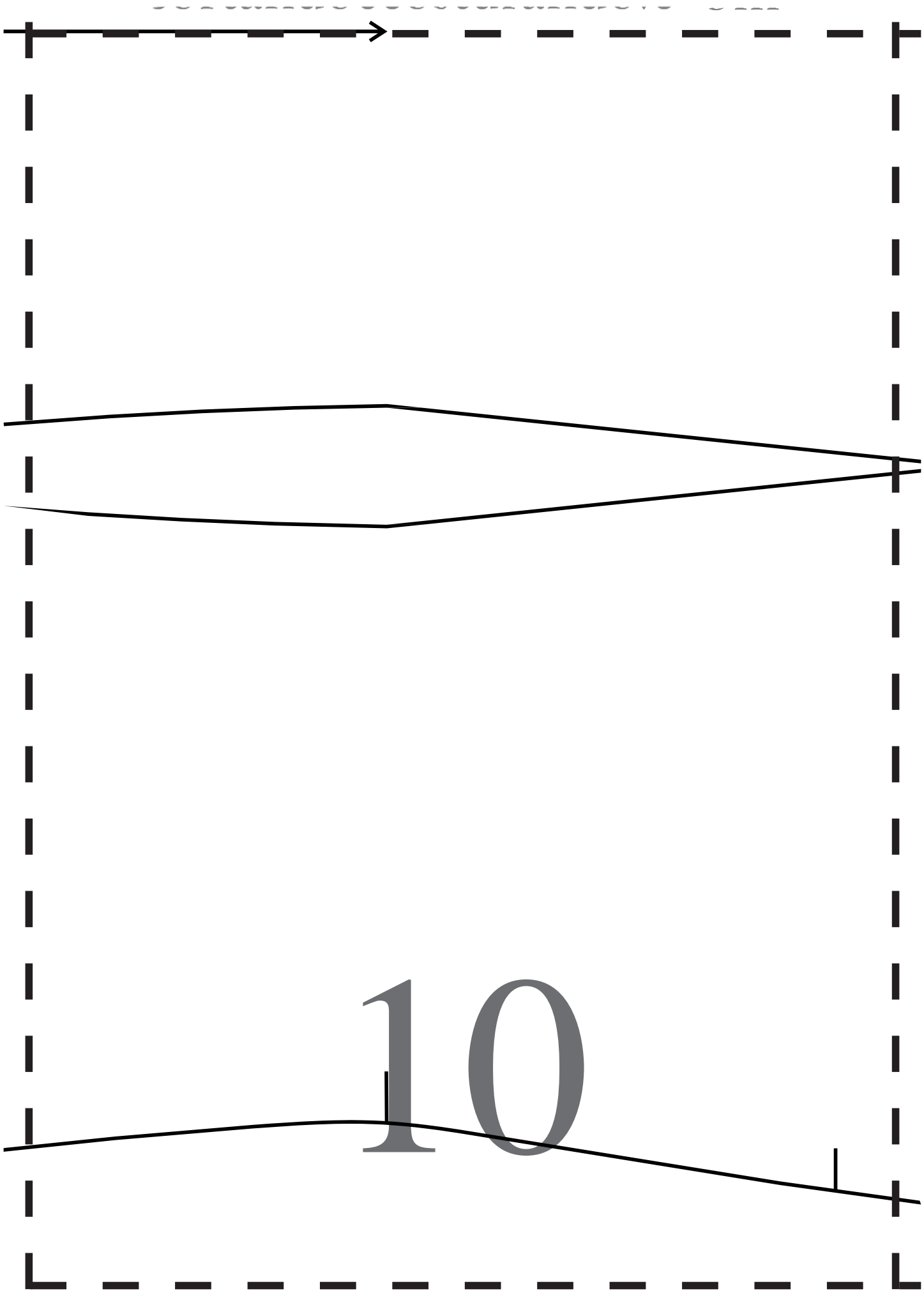


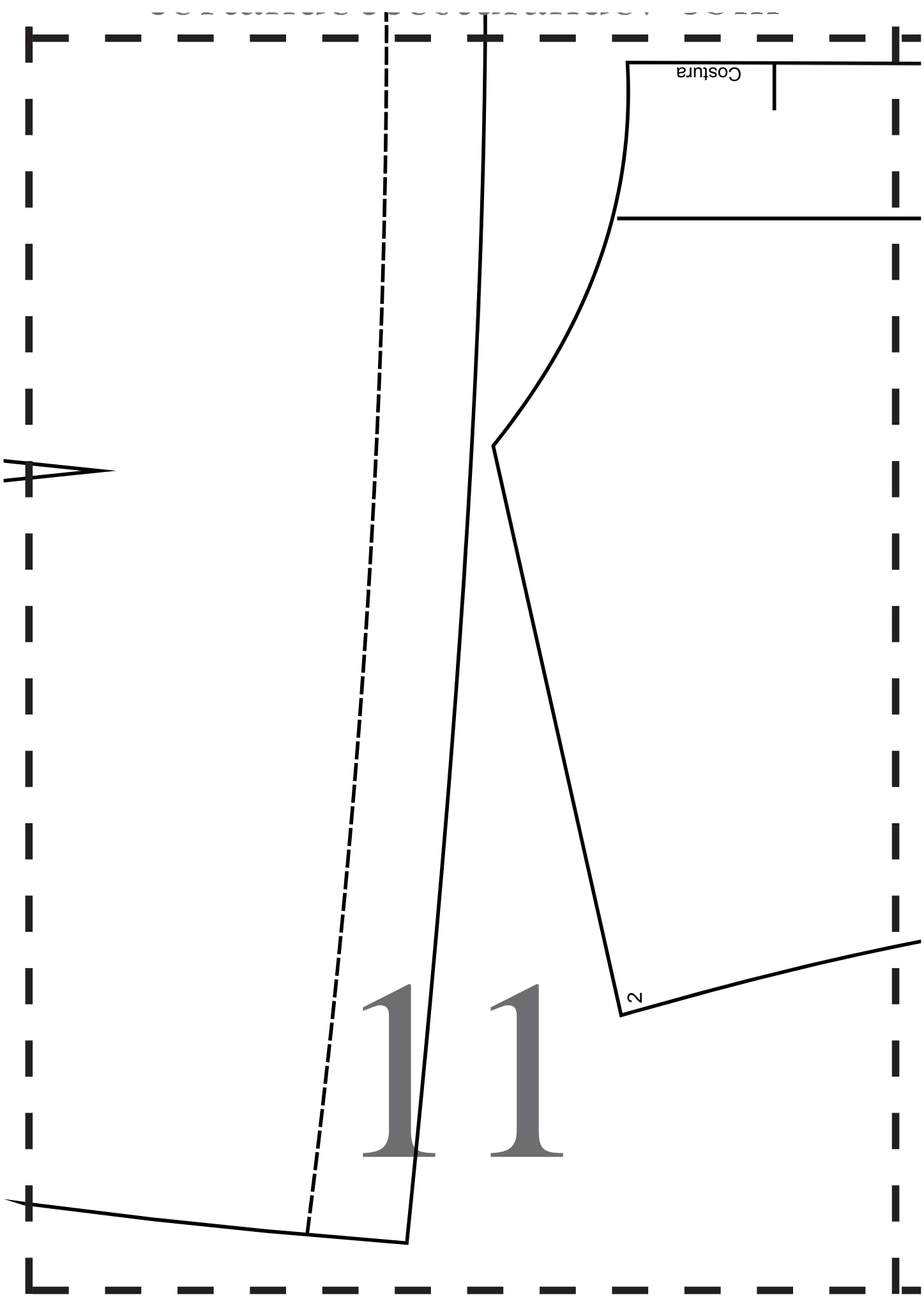
8



9





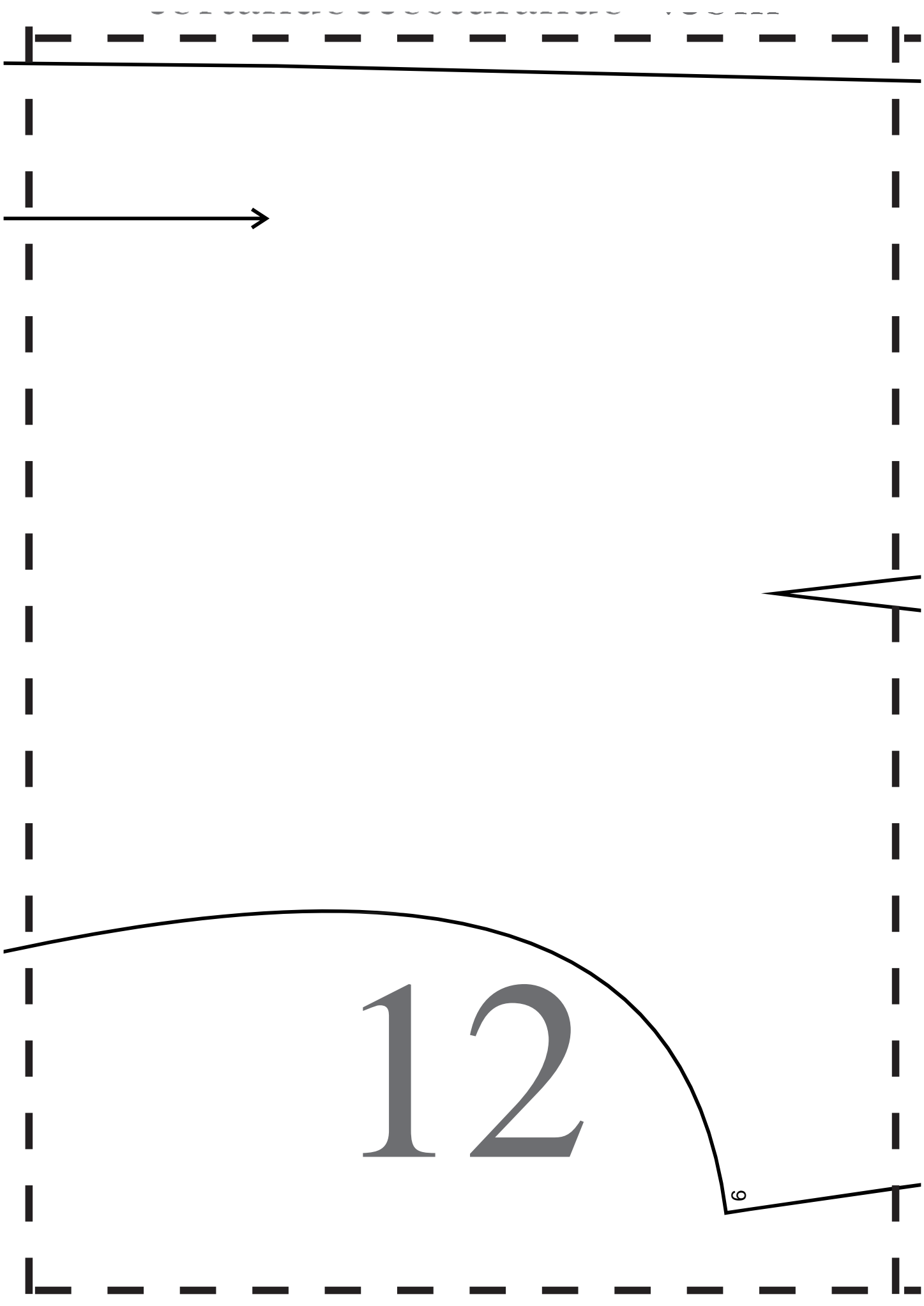


Costura

2

11

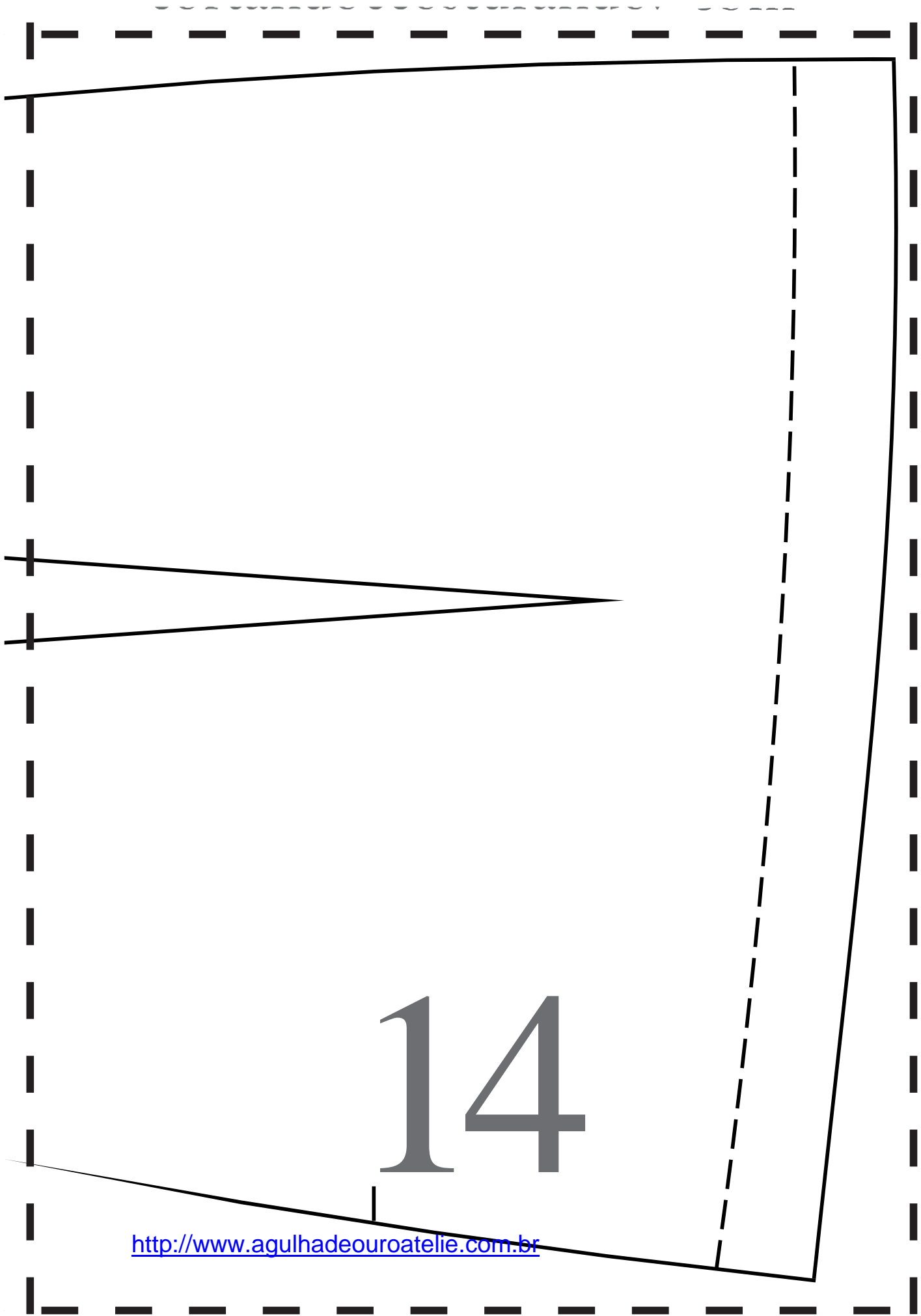




12

6

13



14