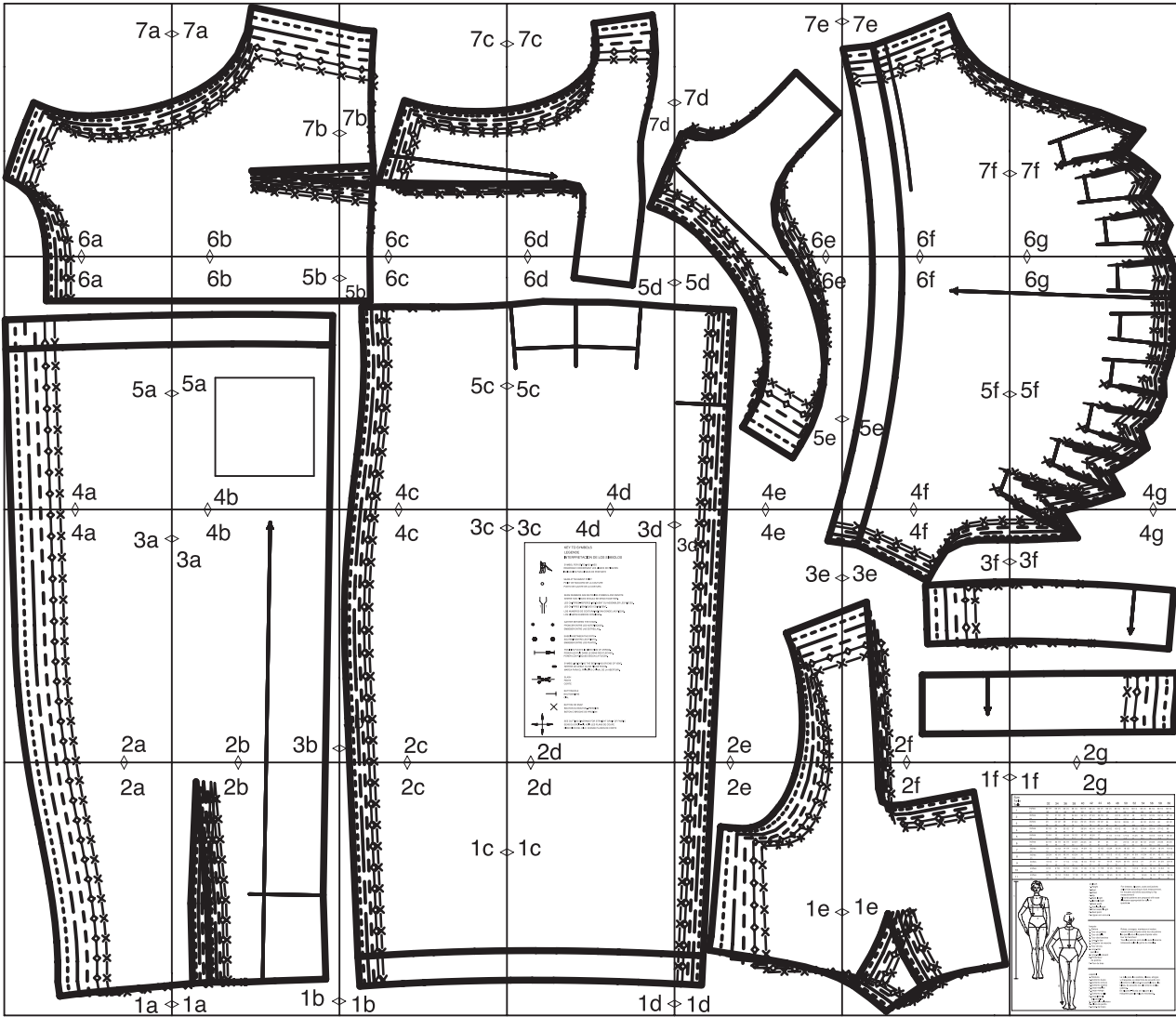


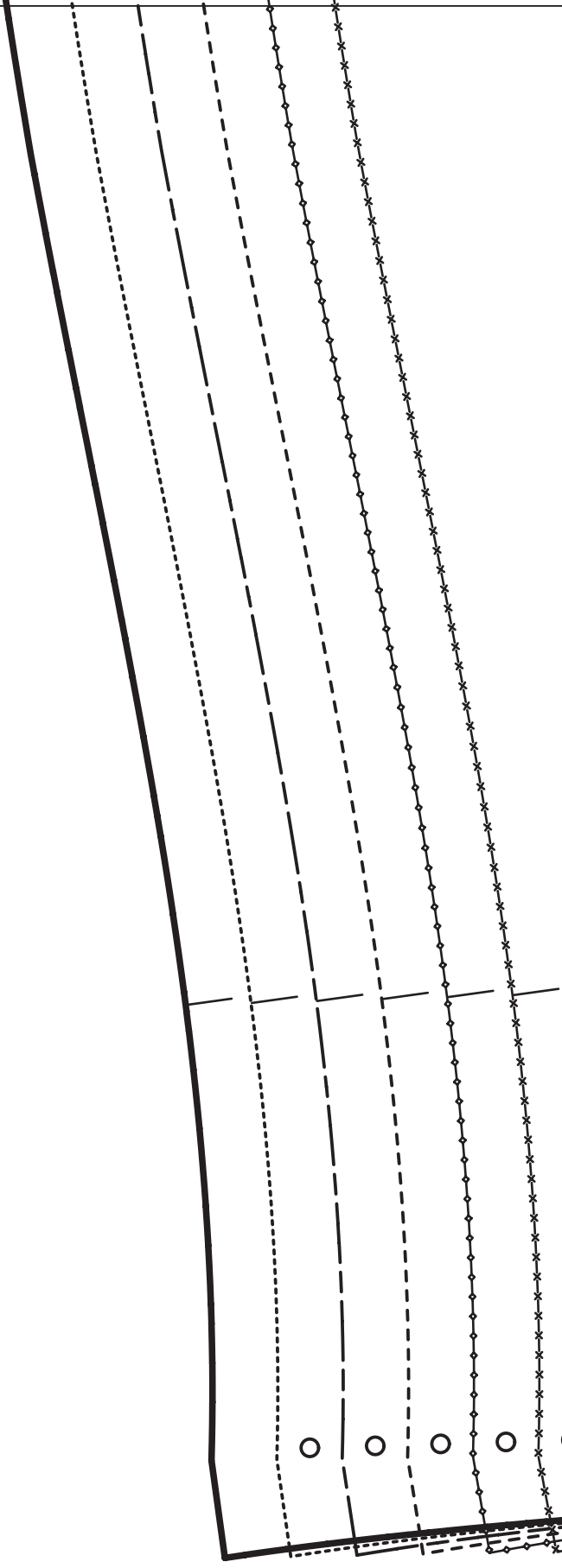
burdastyle download 9306 D

layout drawing





2a



34
4

34

1a



2b

34

44

CENTER BACK ZIPPER
MILIEU DOS, FERM. A GLISS.
MEDIO POST. CREMALLERA

WAIST
TAILLE
CINTURA

1a

1b

2c

1c

1 1/4" (3cm)

HEM ALLOWANCE
VALEUR D'OURLET
MARGEN DE DOBLADILLO

1b

2d

3

FRONT SKIRT PANEL
DEVANT DE JUPE
FALDA ANTERIOR



1 x

ON THE FOLD
DANS LA PLIURE DU TISSU
CON CANTO DOBLADO

5/8"

(1,5cm)

SEAM ALLOWANCE INCLUDED
AVEC VALEUR DE COUTURE
CON MARGEN DE COSTURA

1c

9306

Burda STYLE

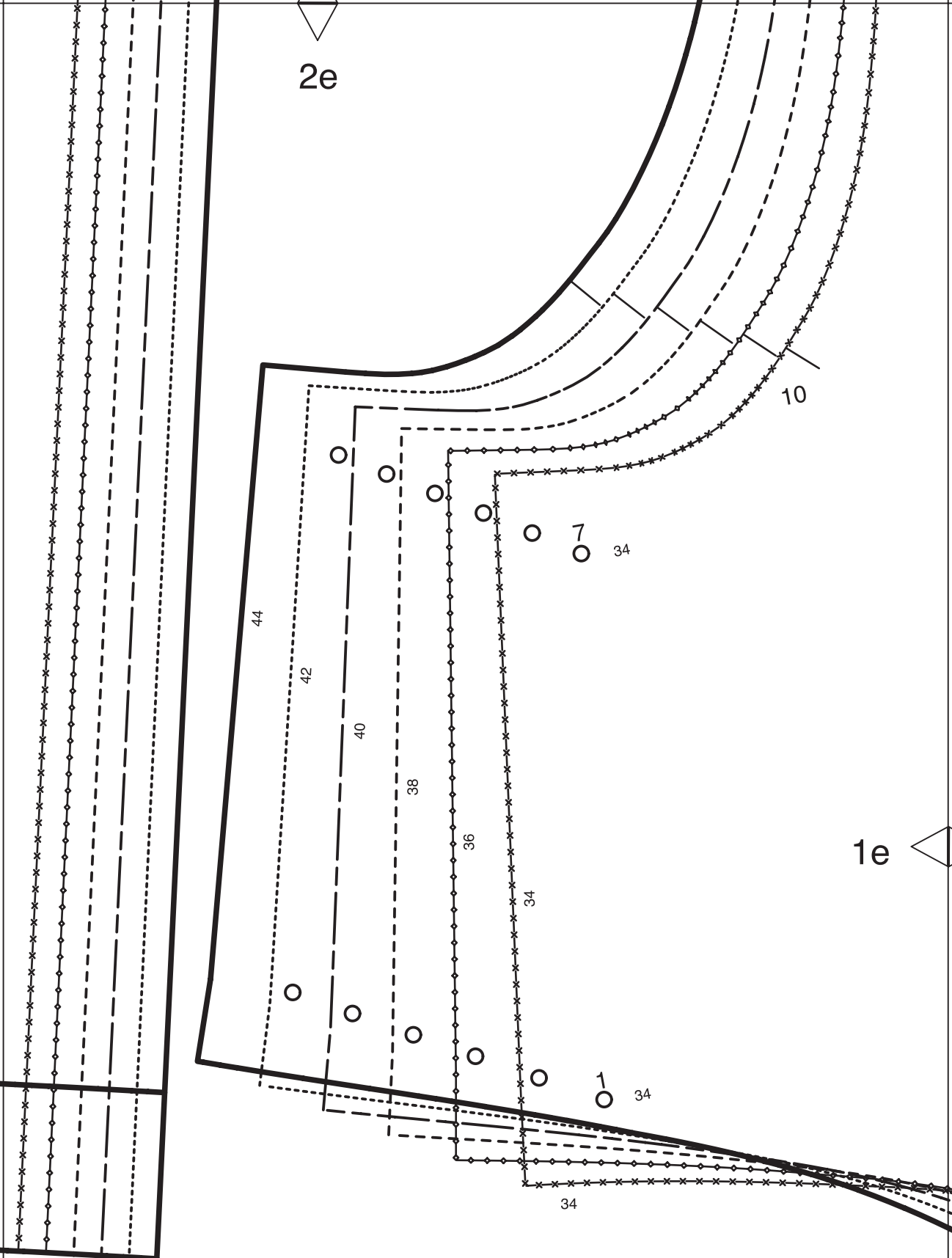
www.burdastyle.com

HEM-FOLDLINE

PLIURE DE L'OURLET
DOBLADILLO-LINEA DE DOBLEZ



1d



1d

2f

1f

1

FRONT
DEVANT
DELANTERO

ON THE FOLD
DANS LA PLIURE DU TISSU
CON CANTO DOBLADO



5/8"
(1,5cm)

SEAM ALLOWANCE INCLUDED
AVEC VALEUR DE COUTURE
CON MARGEN DE COSTURA

9306

**Burda
STYLE**

www.burdastyle.com

CENTER FRONT FOLD, STRAIGHT GRAIN
MILIEU DEVANT PLIURE, DROIT FIL
MEDIO DELANTERO DOBLEZ SENT-HILO

1e

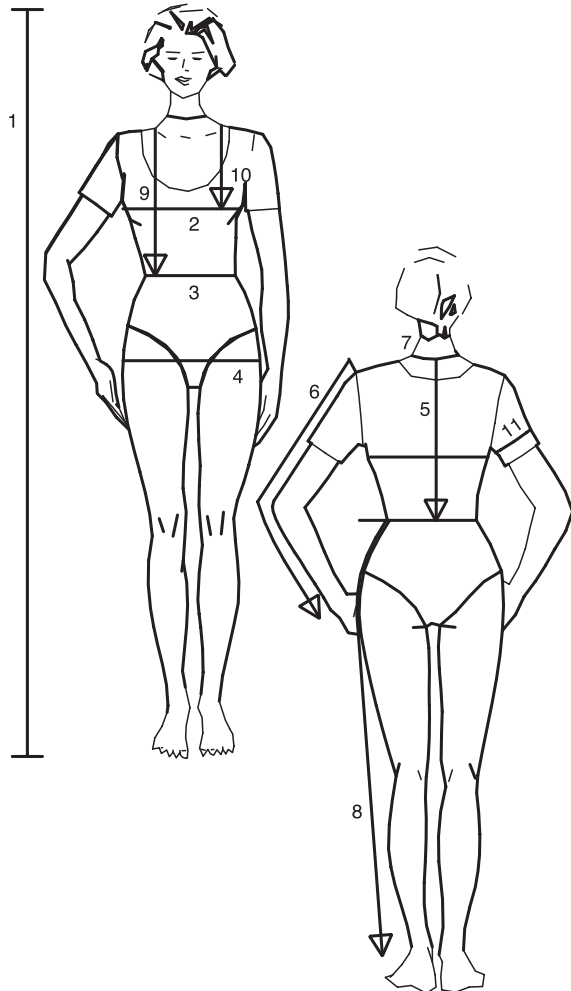
44

34

1f

2g

Size Taille Talla		32	34	36	38	40	42	44	46	48	50	52	54	56	58	60
1	inches	66 1/4	66 1/4	66 1/4	66 1/4	66 1/4	66 1/4	66 1/4	66 1/4	66 1/4	66 1/4	66 1/4	66 1/4	66 1/4	66 1/4	66 1/4
	cm	168	168	168	168	168	168	168	168	168	168	168	168	168	168	168
2	inches	30	31 1/2	33	34 3/4	36 1/4	37 3/4	39 1/2	41	43 1/2	45 1/2	48	50 1/2	52 3/4	55 1/4	57 1/2
	cm	76	80	84	88	92	96	100	104	110	116	122	128	134	140	146
3	inches	23	24 1/2	26	27 3/4	29 1/4	30 3/4	32 1/2	34	36 1/4	38 3/4	41	43 1/2	45 1/2	48	50 1/2
	cm	58	62	66	70	74	78	82	86	92	98	104	110	116	122	128
4	inches	32 1/2	34	35 1/2	37	38 3/4	40 1/4	41 3/4	43 1/2	45 1/2	48	50 1/2	52 3/4	55 1/4	57 1/2	60
	cm	82	86	90	94	98	102	106	110	116	122	128	134	140	146	152
5	inches	15 3/4	16	16 1/4	16 1/2	16 1/2	16 3/4	17	17 1/4	17 1/4	17 1/2	17 3/4	18	18 1/4	18 1/2	18 1/2
	cm	40	40,5	41	41,5	42	42,5	43	43,5	44	44,5	45	45,5	46	46,5	47
6	inches	23 1/4	23 1/4	23 1/4	23 3/4	23 3/4	24	24	24	24	24 1/2	24 1/2	24 1/2	24 3/4	24 3/4	24 3/4
	cm	59	59	59	60	60	61	61	61	61	62	62	62	63	63	63
7	inches	13	13 1/2	14 1/4	14 1/2	14 3/4	15	15 1/2	15 3/4	16 1/4	16 1/2	17	17 1/4	17 3/4	18 1/4	18 1/2
	cm	33	34	35	36	37	38	39	40	41	42	43	44	45	46	47
8	inches	39 3/4	40 1/4	40 1/4	40 3/4	41	41	41 1/2	41 1/2	41 1/2	41 3/4	41 3/4	41 3/4	42 1/4	42 1/2	42 1/2
	cm	101	102	102	103	104	104	105	105	105	106	106	106	107	108	108
9	inches	16 1/2	17	17 1/4	17 3/4	18 1/4	18 1/2	19	19 1/4	19 3/4	20 1/4	20 1/2	21	21 1/4	21 3/4	22 1/4
	cm	42	43	44	45	46	47	48	49	50	51	52	53	54	55	56
10	inches	9 1/2	9 7/8	10 1/4	10 3/4	11 1/8	11 1/2	11 7/8	12 1/4	12 3/4	13	13 1/2	14 1/4	14 1/2	14 3/4	15
	cm	24	25	26	27	28	29	30	31	32	33	34	35	36	37	38
11	inches	9 7/8	10 1/4	10 3/4	11 1/8	11 1/2	11 7/8	12 1/4	12 3/4	13 1/2	14 1/2	15	15 3/4	16 1/2	17 1/4	18 1/4
	cm	25	26	27	28	29	30	31	32	34	36	38	40	42	44	46



englisch

1. Height
2. Bust
3. Waist
4. Hip
5. Back length
6. Sleeve length
7. Neck width
8. Side leg length
9. Front waist length
10. Bust point
11. Upper arm circumf.

For dresses, blouses, coats and jackets select size according to bust measurement, for trousers and skirts according to hip measurement!
All burda patterns are prepared with ease allowance appropriate for style in question.

français

1. Stature
2. Tour de poitrine
3. Tour de taille
4. Tour des hanches
5. Long. du dos
6. Longueur de manche
7. Tour de cou
8. Long. côté pantalon
9. Long. taille devant
10. Profondeur de poitrine
11. Tour du bras

Robes, corsages, manteaux et vestes seront choisis d'après votre tour de poitrine les pantalons et les jupes d'après votre tour de hanches!
Tous les patrons sont établis avec l'aisance nécessaire selon le genre du modèle.

español

1. Estatura
2. Contorno busto
3. Contorno cintura
4. Contorno cadera
5. Largo espalda
6. Largo manga
7. Contorno cuello
8. Largo lateral del pantalón
9. Largo talle delantero
10. Altura de pecho
11. Cont. de brazo

La talla para los vestidos, blusas, abrigos y chaquetas, se determina de acuerdo con el contorno del busto. Los pantalones y las faldas, de acuerdo con el contorno de las caderas.
En el patrón-Burda se incluyen los márgenes para la holgura necesaria.

4a

3a

2a

44

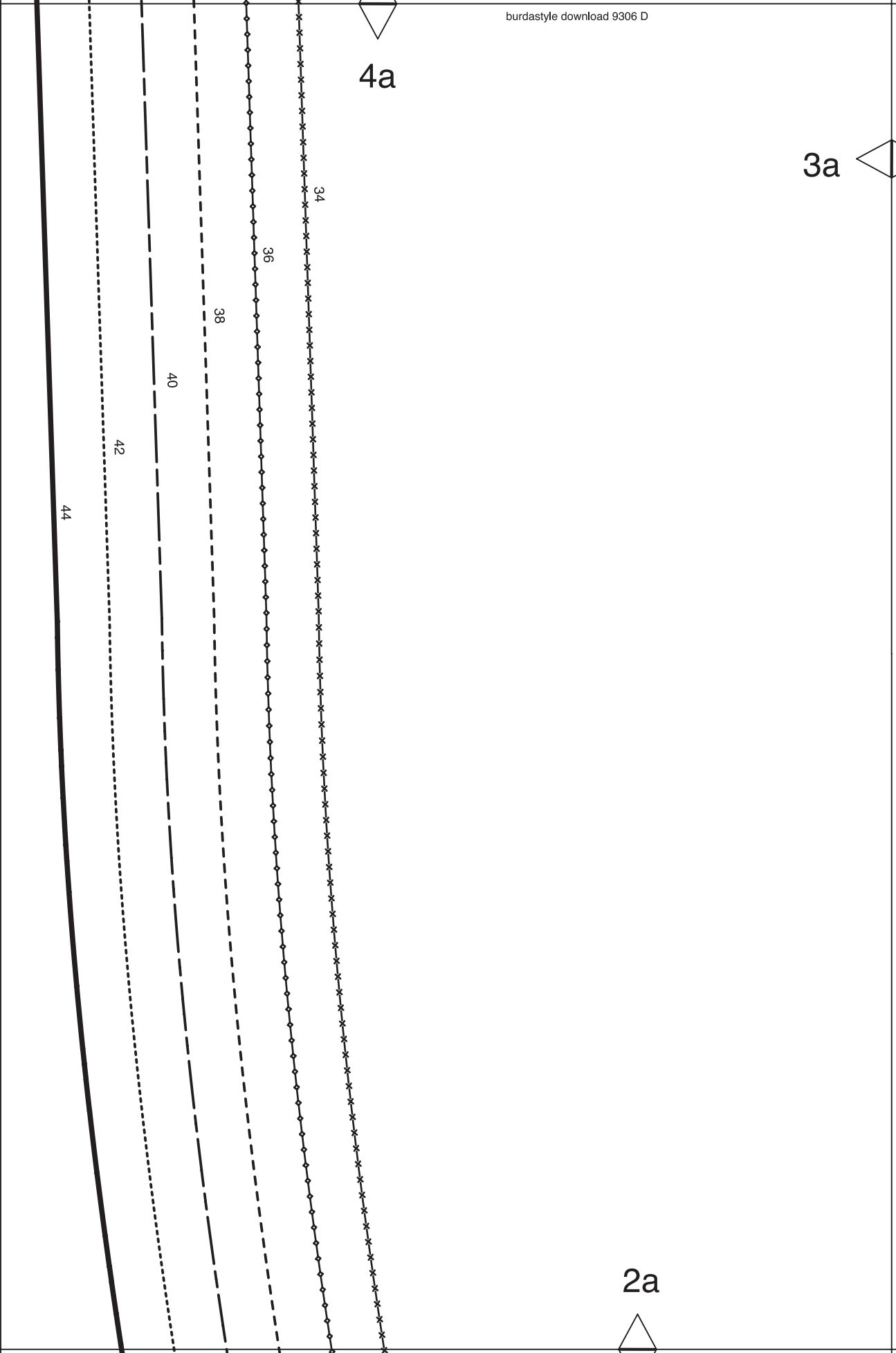
42

40

38

36

34



4b

3a

STRAIGHT GRAIN
DROIT FIL
SENTIDO HILO

www.burdastyle.com

Burda
STYLE

9306

SEAM ALLOWANCE INCLUDED
AVEC VALEUR DE COUTURE
CON MARGEN DE COSTURA
5/8" (1.5cm)



BACK SKIRT PANEL
DOS DE JUPE
FALDA POST.

6

SEAM
COUTURE
COSTURA

2b

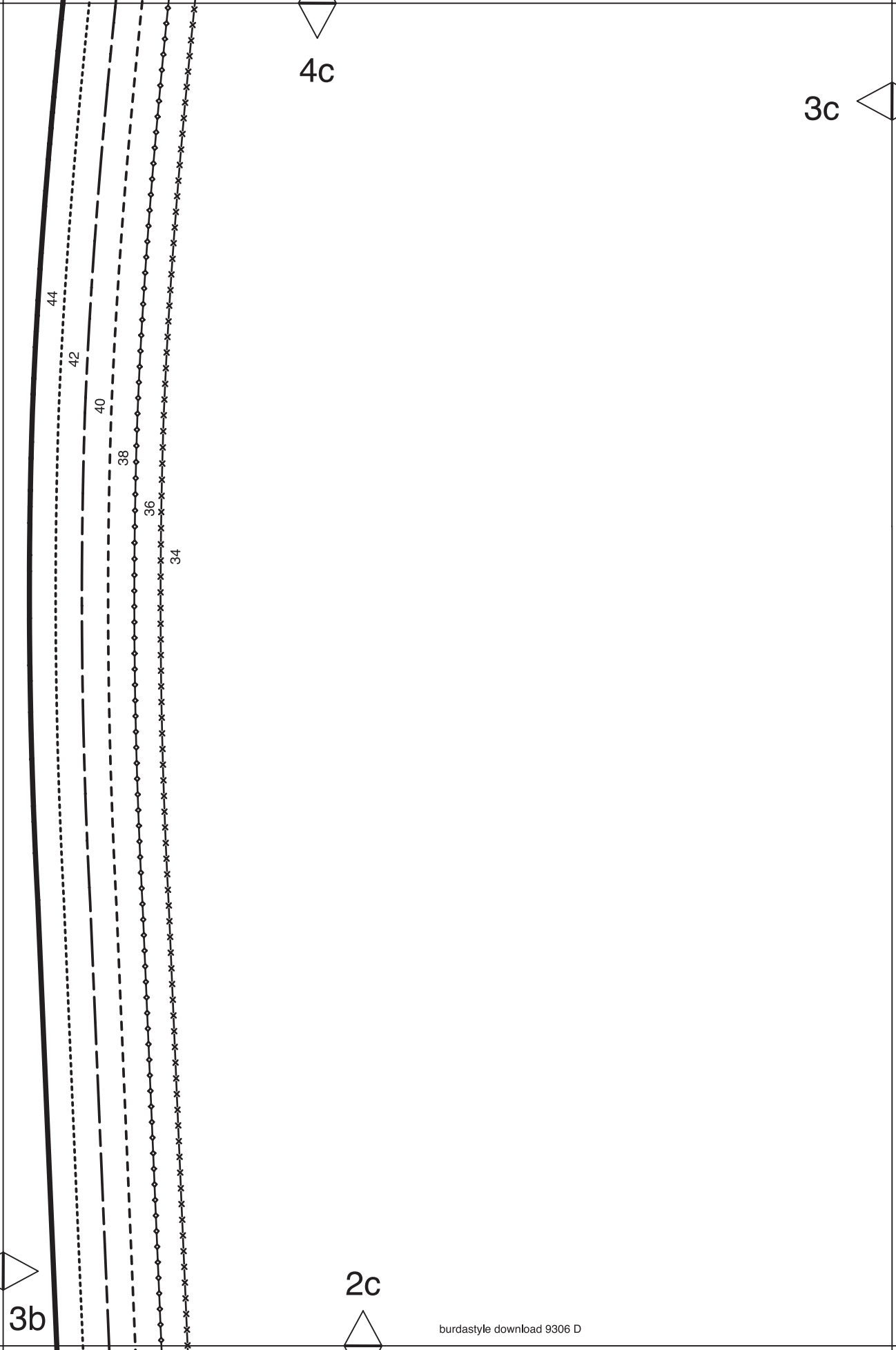
3b

3b

4c

3c

2c



KEY TO SYMBOLS

LEGENDE

INTERPRETACION DE LOS SIMBOLOS



SYMBOL FOR STITCHING LINES
REMARQUE CONCERNANT LES LIGNES DE PIQURES
INDICACION PARA LINEAS DE PESPUNTE



SEAM ATTACHMENT POINT
POINT DE RACCORD DE LA COUTURE
PUNTO DE AJUSTE DE LA COSTURA



SEAM NUMBERS ARE MATCHING SYMBOLS AND DENOTE
WHERE TWO PIECES SHOULD BE SEWN TOGETHER.
LES CHIFFRES-REPERES INDIQUENT OU ASSEMBLER LES PIECES.
LES CHIFFRES IDENTIQUES COINCIDENT.
LOS NUMEROS DE COSTURA INDICAN DONDE LAS PIEZAS.
LOS MISMOS NUMEROS COINCIDEN.



GATHER BETWEEN THE STARS.
FRONCER ENTRE LES ASTERISQUES.
EMBEBER ENTRE LAS ESTRELLAS.



EASE IN BETWEEN THE DOTS.
SOUTENIR ENTRE LES POINTS.
EMBEBER ENTRE LOS PUNTOS.



POSITION PLEATS IN DIRECTION OF ARROW.
POSER LES PLIS DANS LE SENS DES FLECHES.
PONER LOS PLIEQUES SEGUN LA FLECHA.



SYMBOL INDICATING THE BEGINNING OR END OF VENT.
REPERE DE DEBUT OU DE FIN DE FENTE.
MARCA PARA EL PRINCIPIO O FINAL DE LA ABERTURA.



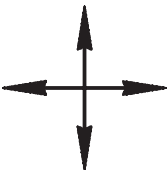
SLASH
FENTE
CORTE



BUTTONHOLE
BOUTONNIERE
OIAL



BUTTON OR SNAP
BOUTON OU BOUTON-PRESSION
BOTON O BROCHE DE PRESION



SEE CUTTING DIAGRAMS FOR STRAIGHT GRAIN OF FABRIC
SENS DU DROIT-FIL VOIR LES PLANS DE COUPE
DIRECCION DEL HILO, VEANSE PLANOS DE CORTE



3d

4e

3e

2e

34

36

38

40

42

44

44

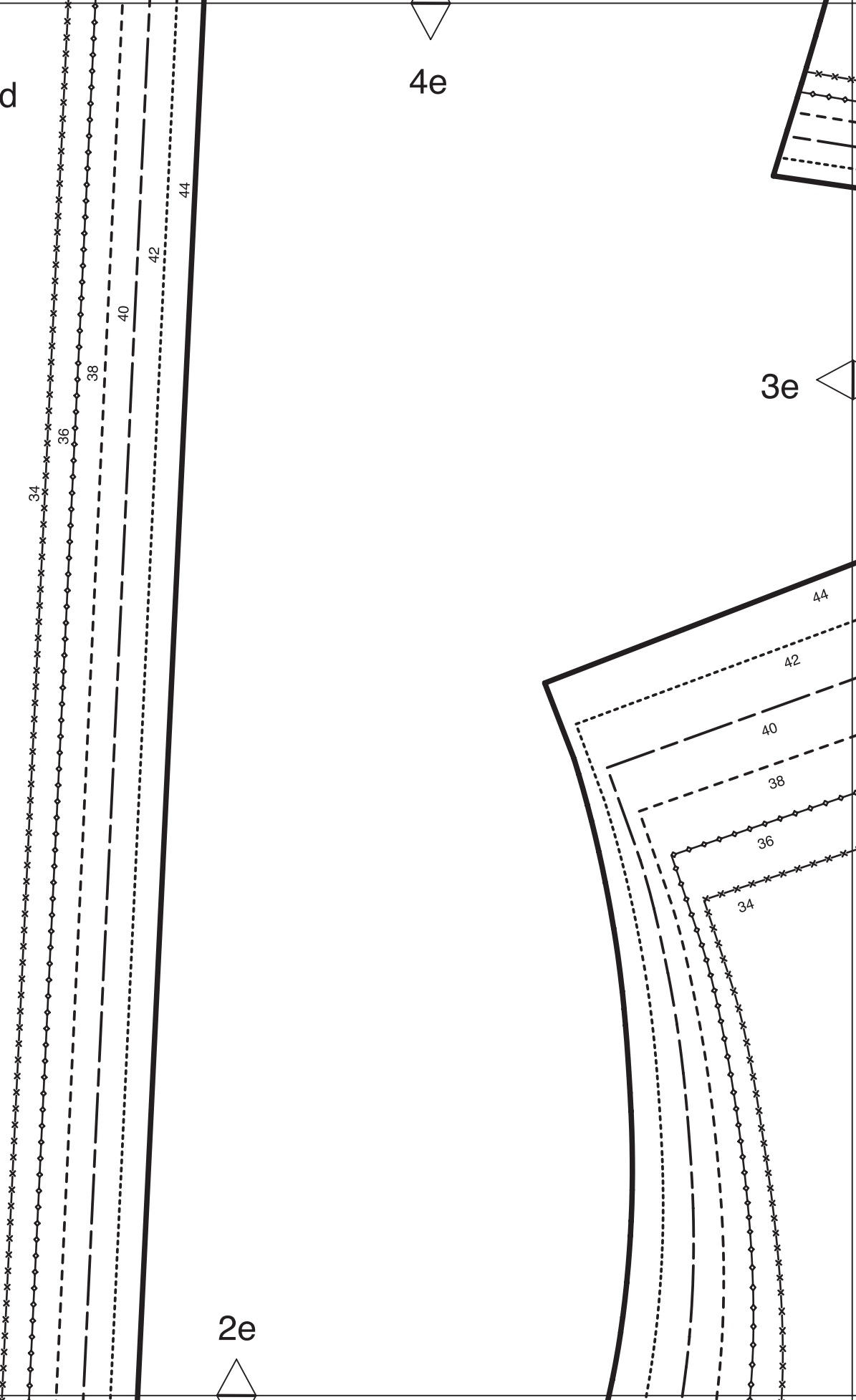
42

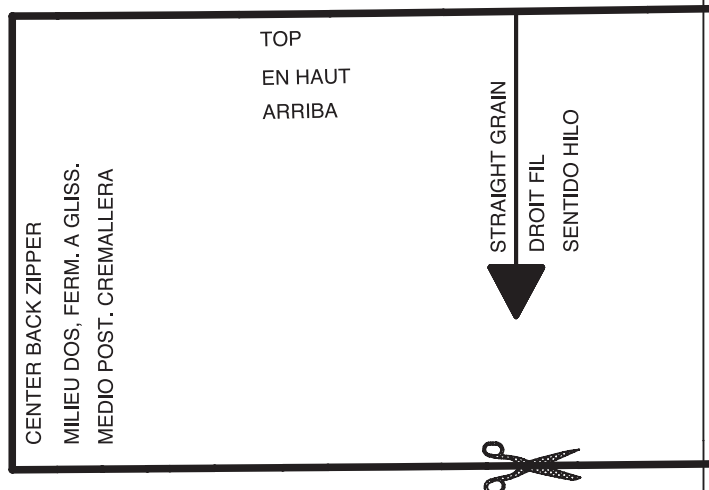
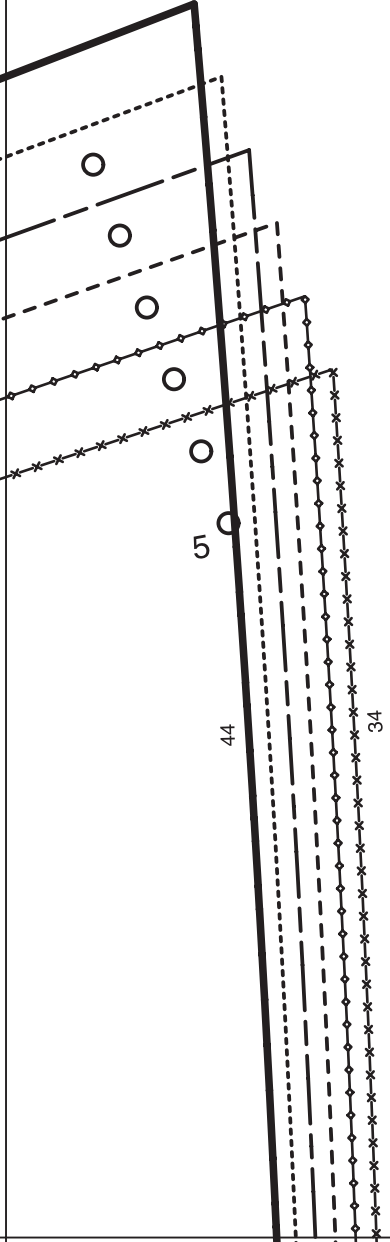
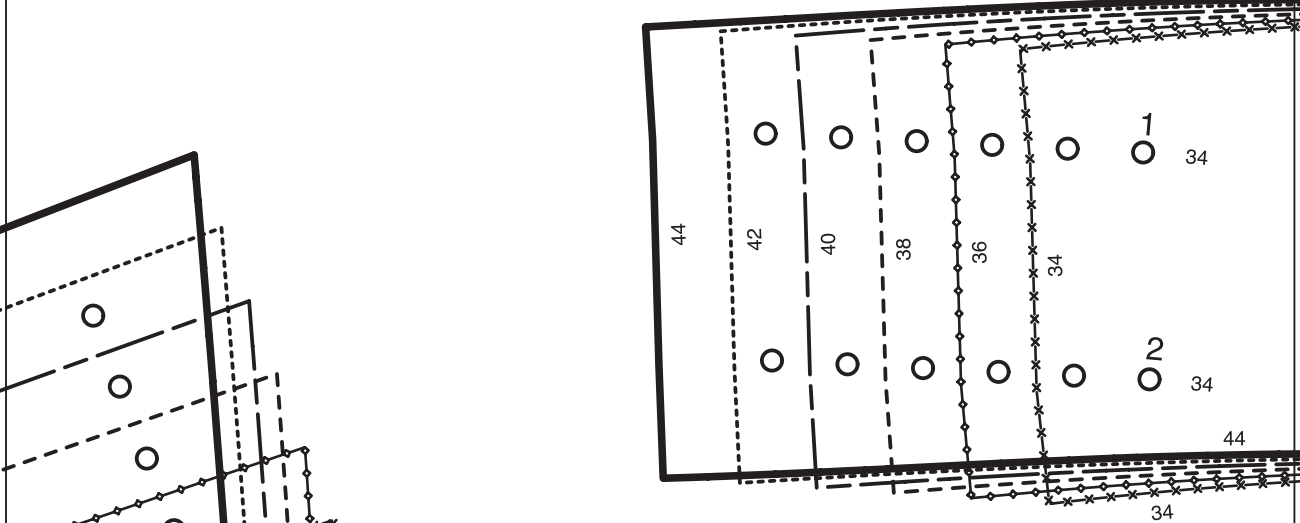
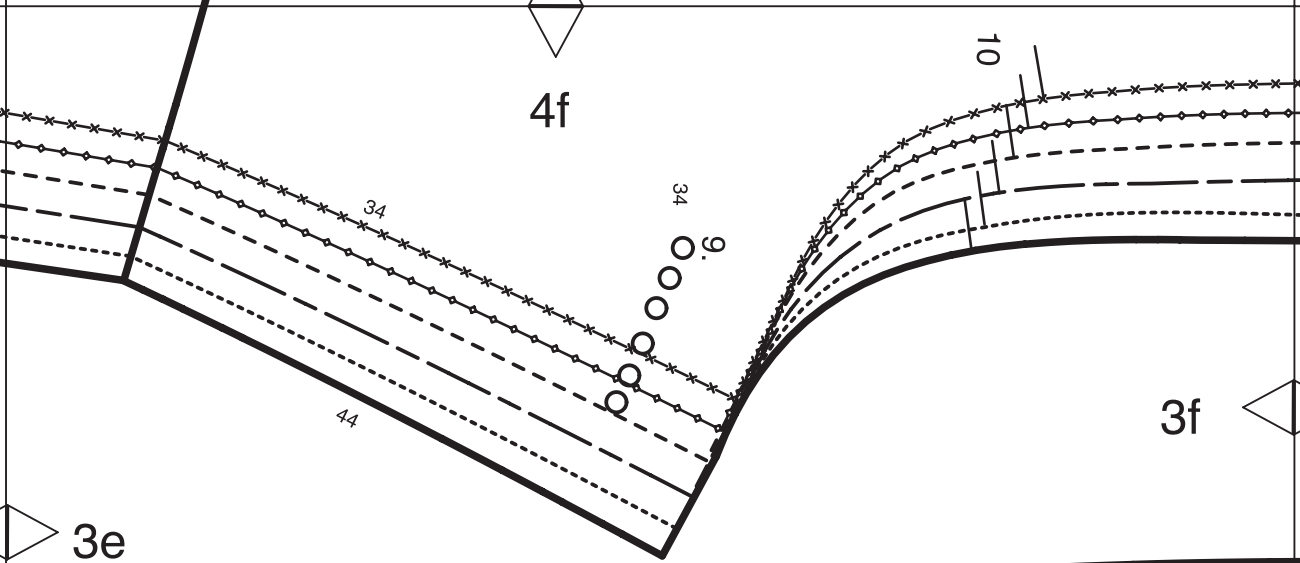
40

38

36

34





4g

3f

Burda STYLE

www.burdastyle.com

2

FRONT BAND
PAREMENT/PATTE DEVANT
CENEFA ANTERIOR

TOP
EN HAUT
ARRIBA

ON THE FOLD
DANS LA PLIURE DU TISSU
CON CANTO DOBLADO

✂ 1 x

5/8"

(1,5cm)

SEAM ALLOWANCE INCLUDED
AVEC VALEUR DE COUTURE
CON MARGEN DE COSTURA

9306

STRAIGHT GRAIN
DROIT FIL
SENTIDO HILO

CENTER FRONT
MILIEU DEVANT
CENTRO DELANTERO
FABRIC FOLD
PLIURE DU TISSU
CANTO DE DOBLEZ

Burda STYLE

www.burdastyle.com

5

BACK BAND
PAREMENT DOS
CENEFA POST.

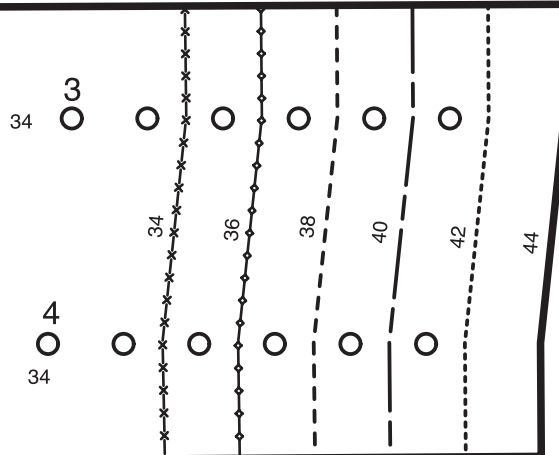
✂ 2 x

5/8"

(1,5cm)

SEAM ALLOWANCE INCLUDED
AVEC VALEUR DE COUTURE
CON MARGEN DE COSTURA

9306



2g

6a

HEM ALLOWANCE
VALEUR D'OURLET
1 1/4" (3cm)
MARGEN DE DOBLADILLO

5a

4a

6b

5b

CENTER BACK ZIPPER STRAIGHT GRAIN
MILIEU DOS, FERM. A GLISS., DROIT-FIL
MEDIO POST. CREMALLERA, DIRECCION HILO



DOBLADILLO-LINEA DE DOBLEZ
PLIURE DE L'OURLET

HEM-FOLDLINE

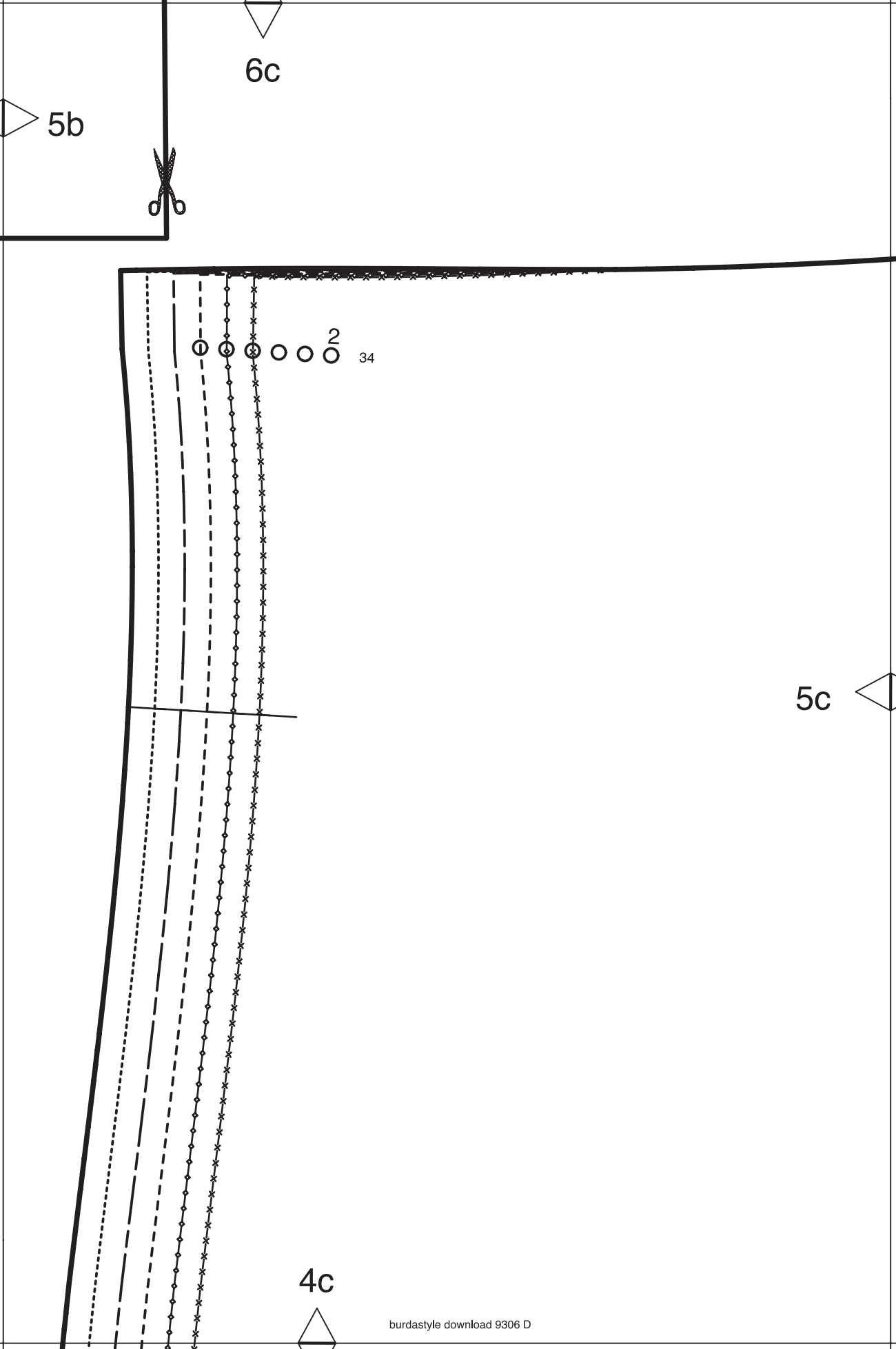
5a

test square

side length

4 inches (10 cm)

4b



5b

6c



① ② ③ ○ ○ ② 34

5c

4c



6d

CENTER FRONT FOLD
PLIURE DU TISSU MILIEU DEVANT
MEDIO DELANTERO, DOBLEZ

5d

PLEAT
PLI
PLIEGUE

PLEAT
PLI
PLIEGUE

5c

4d

5d

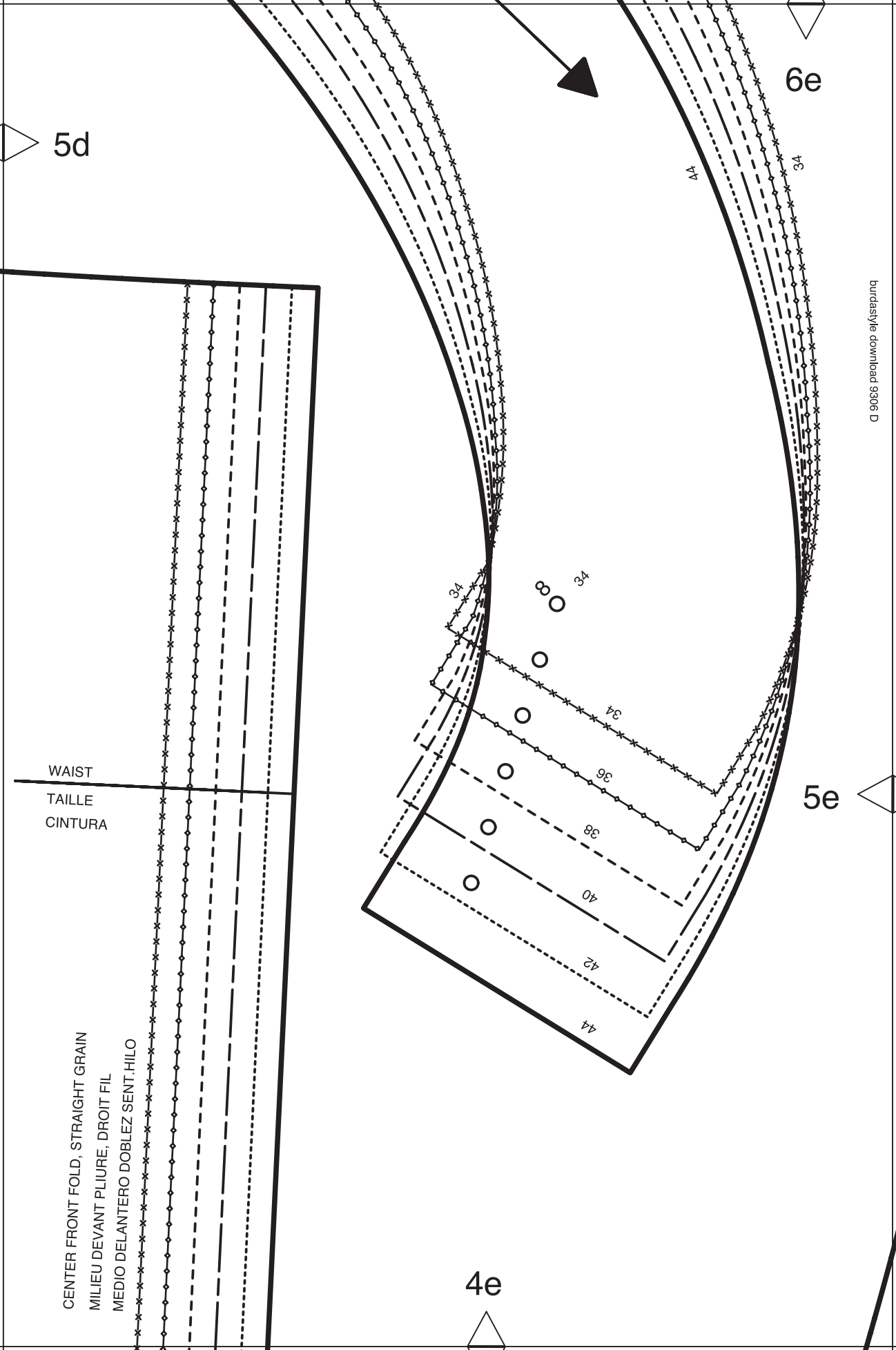
6e

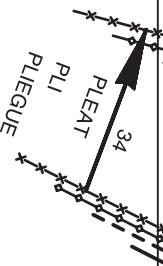
WAIST
TAILLE
CINTURA

CENTER FRONT FOLD, STRAIGHT GRAIN
MILIEU DEVANT PLOURE, DROIT FIL
MEDIO DELANTERO DOBLEZ SENT. HILO

4e

5e





STRAIGHT GRAIN
DROIT FIL
SENTIDO HILO

5f

7

SLEEVE
MANCHE
MANGA



5/8" (1.5cm)
SEAM ALLOWANCE INCLUDED
AVEC VALEUR DE COUTURE
CON MARGEN DE COSTURA

9306

Burda
STYLE

www.burdastyle.com

6f

HEM-FOLDLINE
PLIURE DE L'OURLET
DOBLADILLO-LINEA DE DOBLEZ

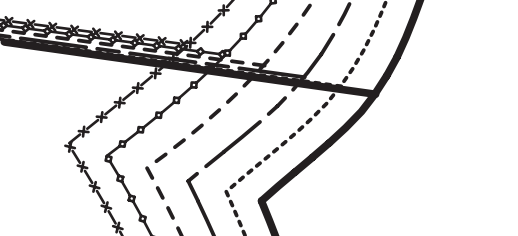
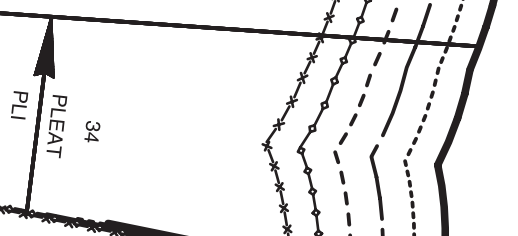
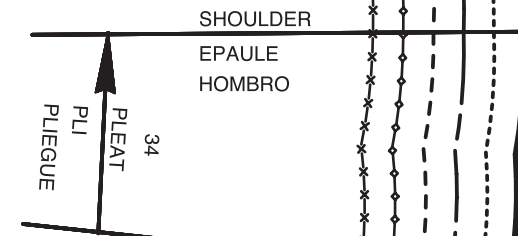
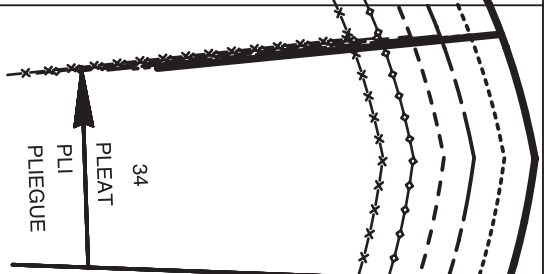


1 1/4" (3cm)
HEM ALLOWANCE
VALEUR D'OURLET
MARGEN DE DOBLADILLO

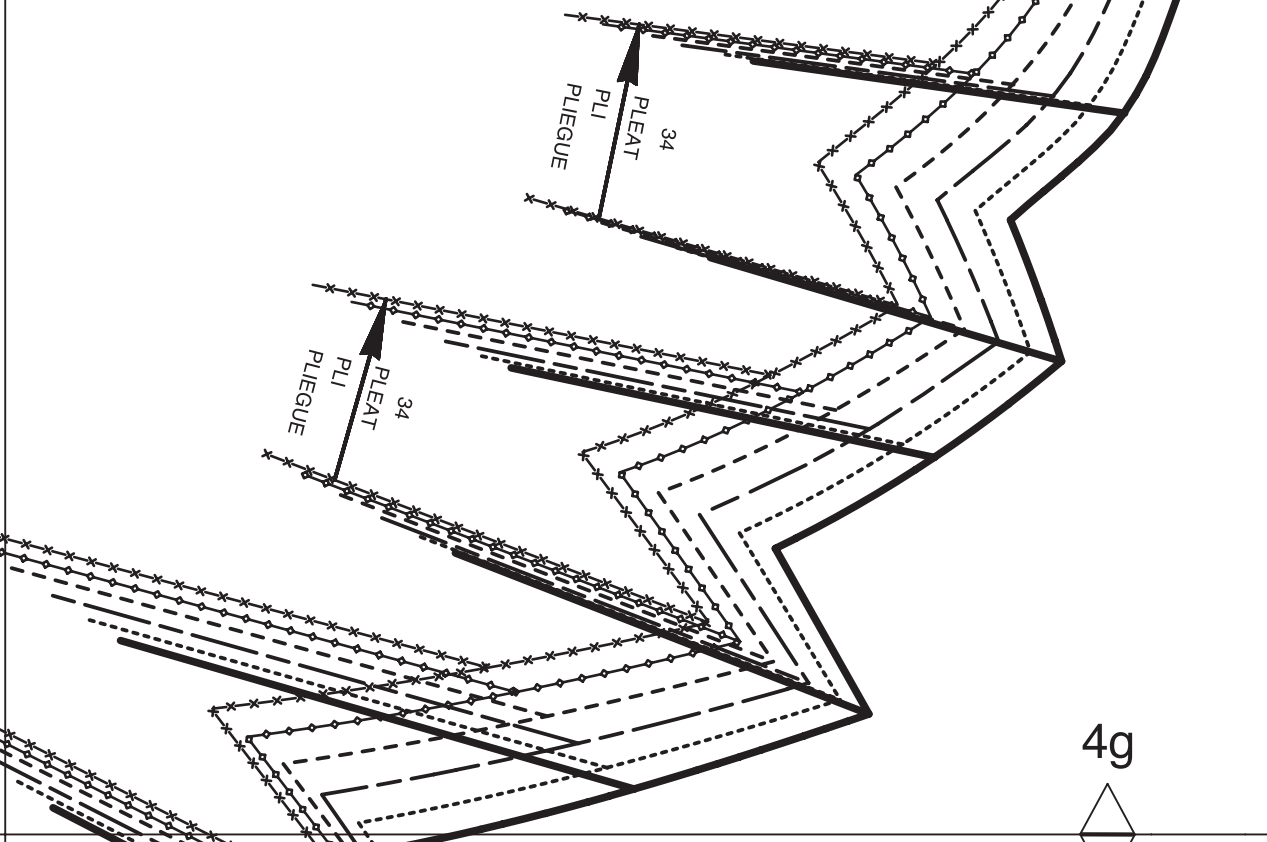
5e

4f

6g



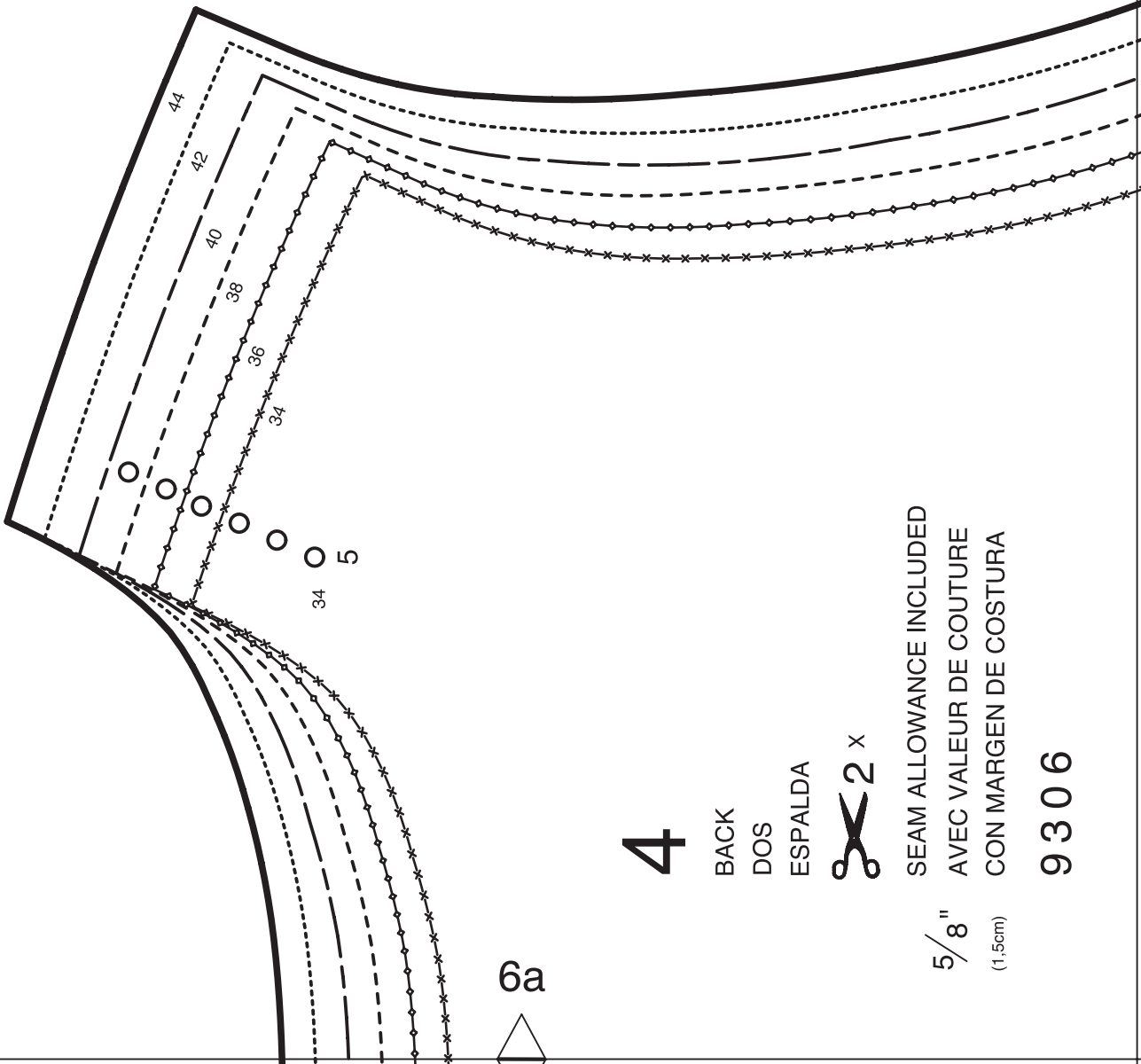
5f



4g



7a



4

BACK
DOS
ESPALDA



SEAM ALLOWANCE INCLUDED
AVEC VALEUR DE COUTURE
CON MARGEN DE COSTURA

5/8"
(1.5cm)

9306

6a

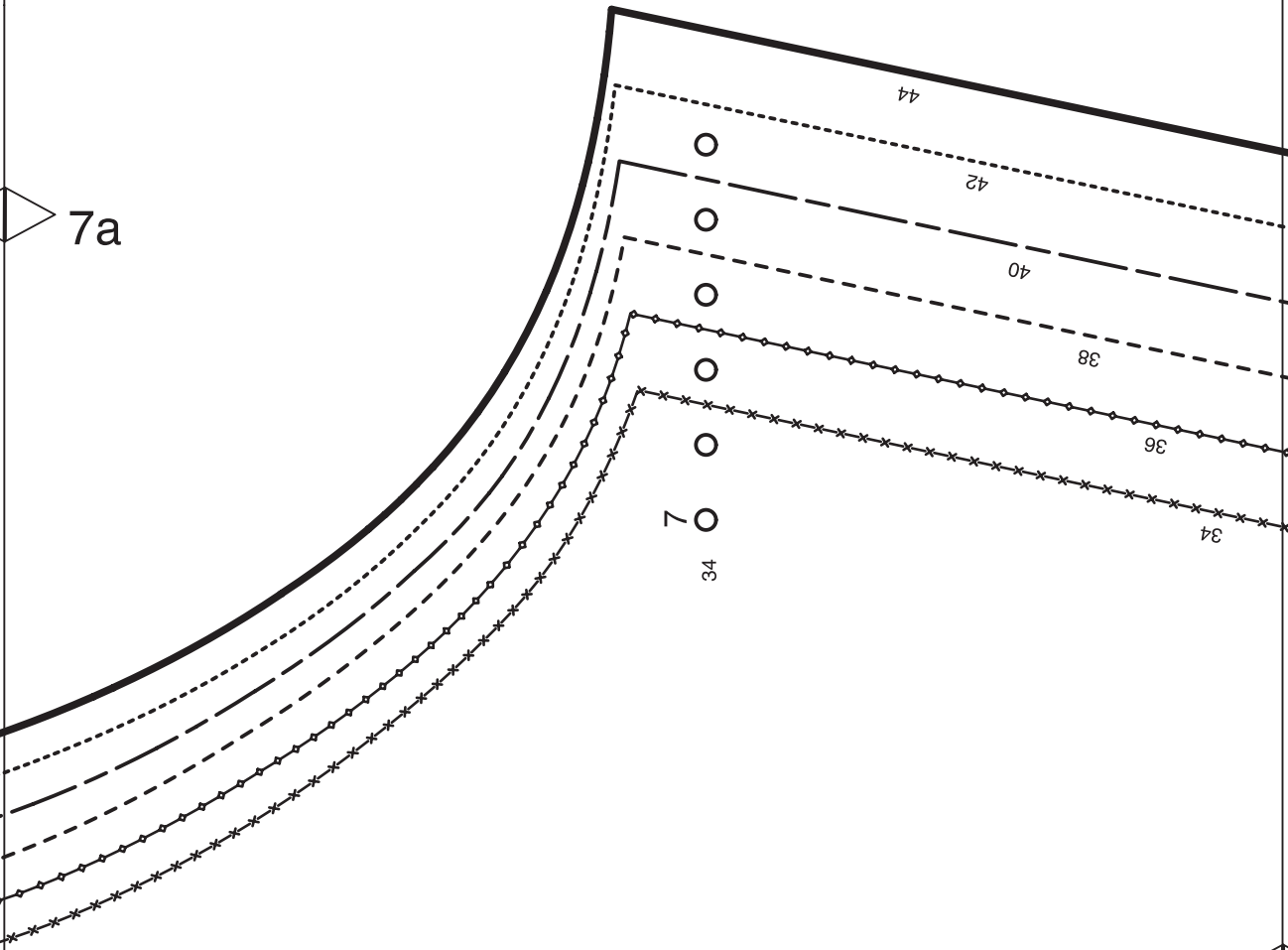


Burda STYLE

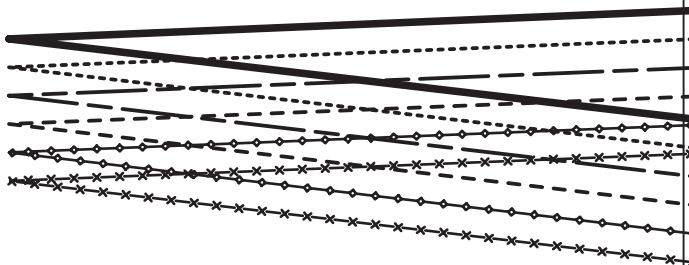
www.burdastyle.com



7a

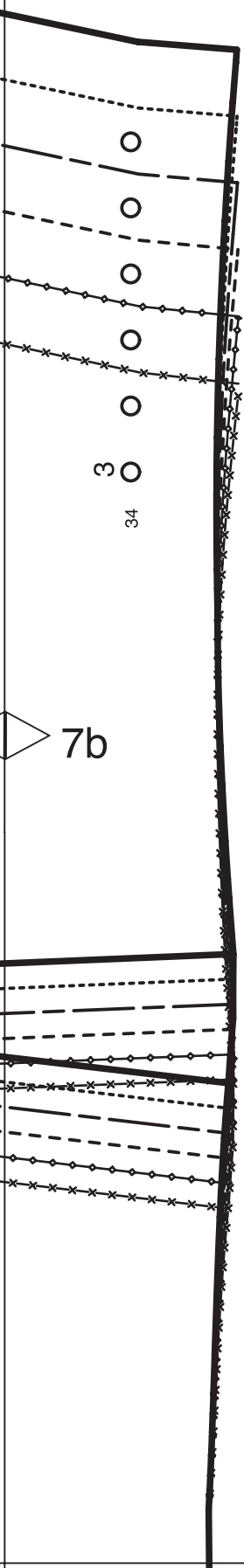


7b

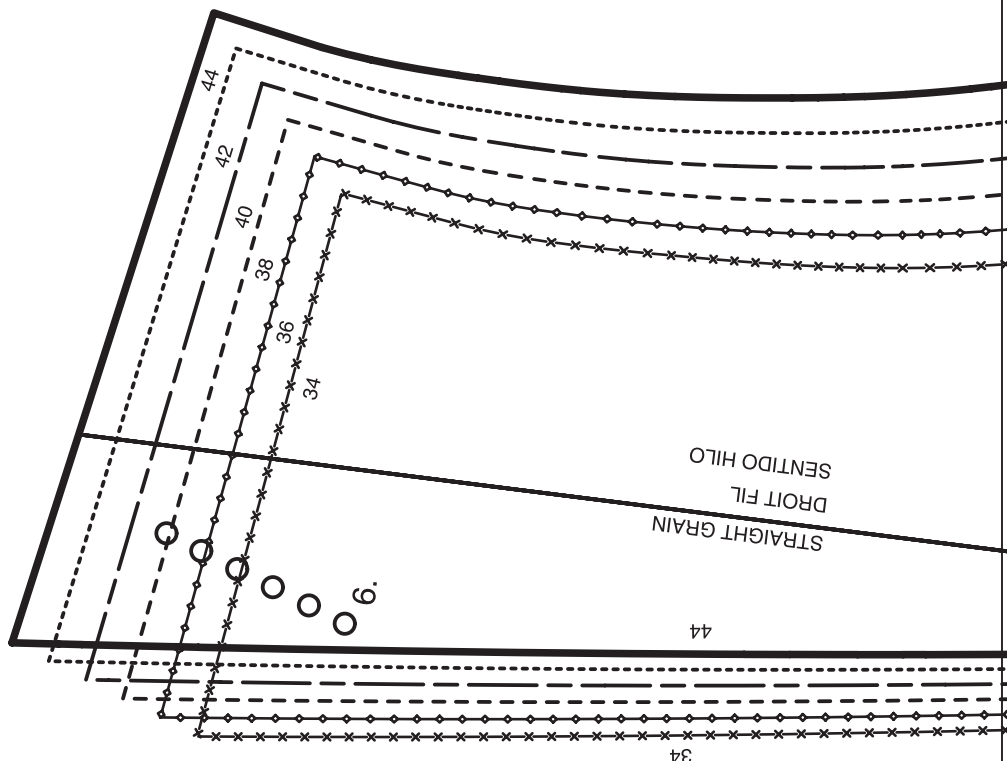


6b



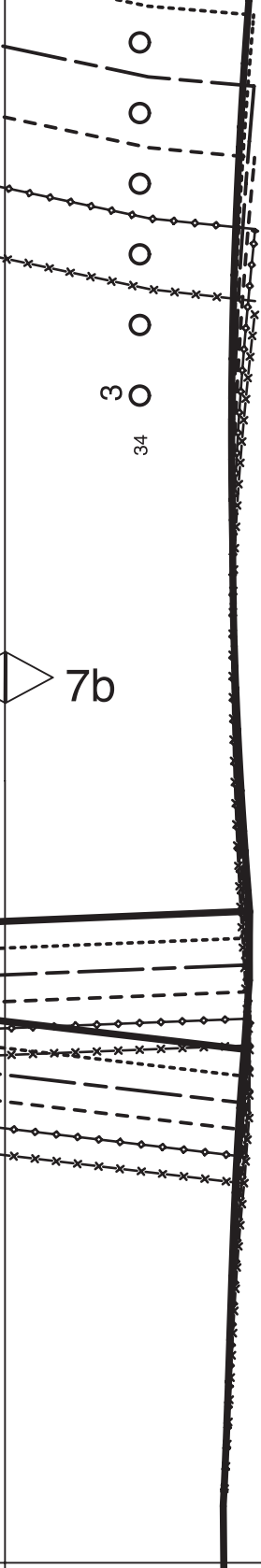


7b

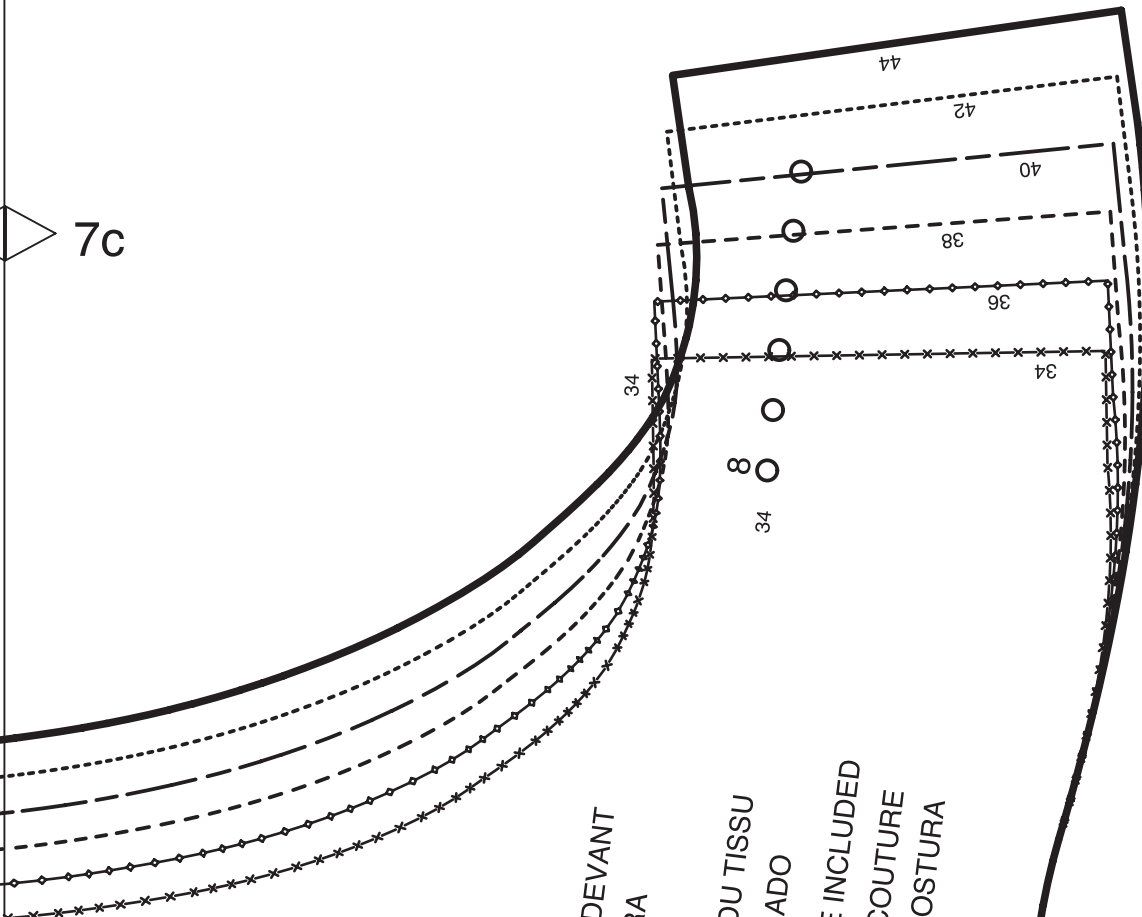


6c

7c



7c



7d

8

FRONT FACING
 PAREMENTURE DEVANT
 VISTA DELANTERA

ON THE FOLD
 DANS LA PLIURE DU TISSU
 CON CANTO DOBLADO

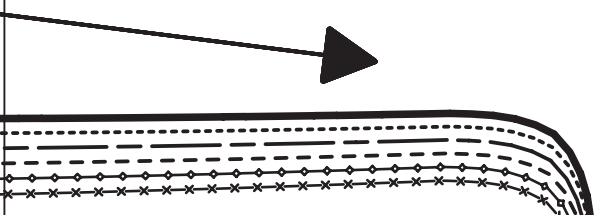


1 x

SEAM ALLOWANCE INCLUDED
 AVEC VALEUR DE COUTURE
 CON MARGEN DE COSTURA

5/8"
 (1.5cm)

9306

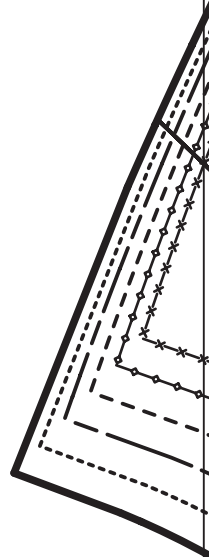


6d



**Burda
 STYLE**

www.burdastyle.com



Burda STYLE

www.burdastyle.com

7d

Burda STYLE

www.burdastyle.com

MILIEU DOS
CENTRO POST.
CENTER BACK

9

BACK FACING
PAREMENTURE DOS
VISTA POST.

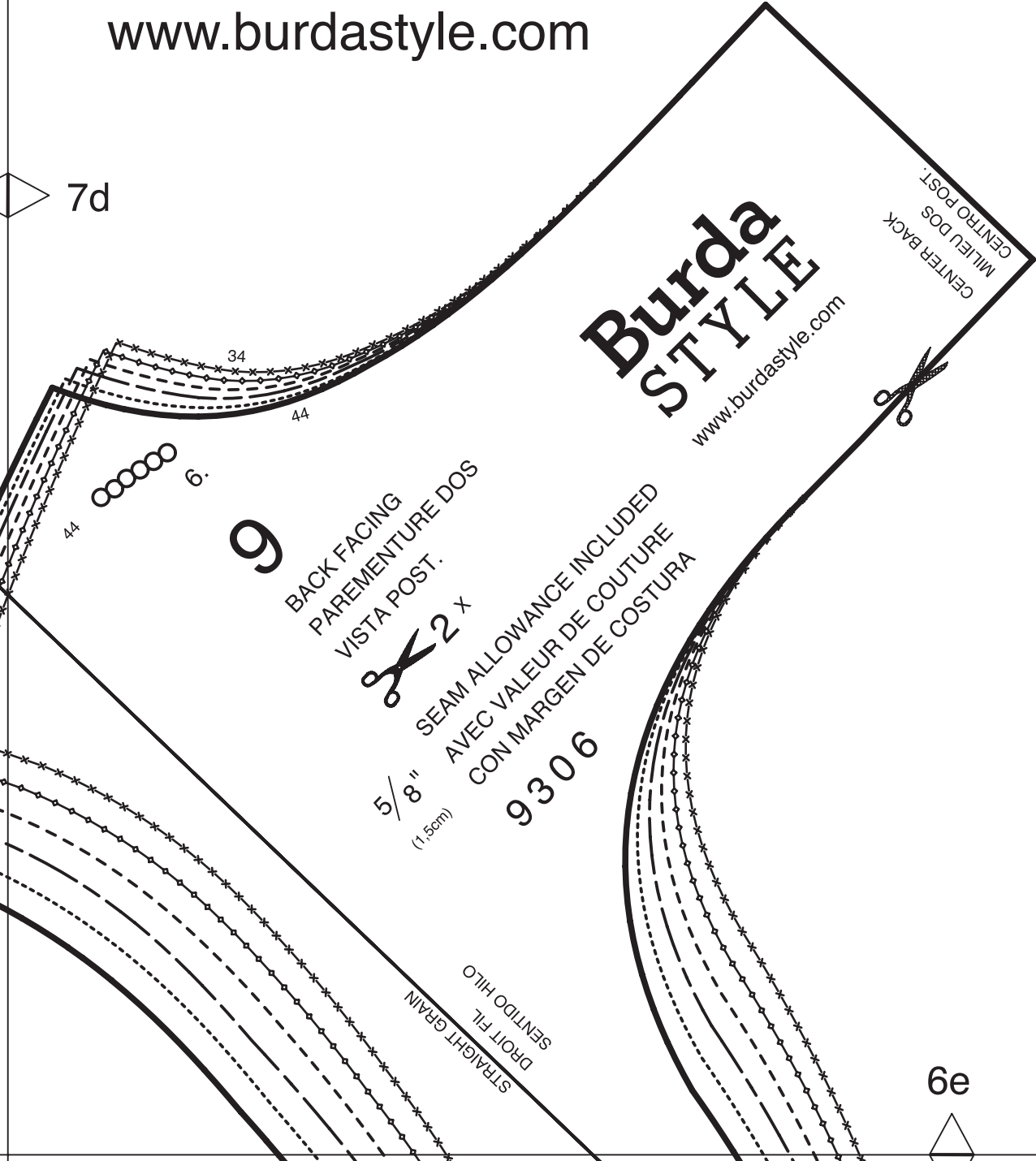


SEAM ALLOWANCE INCLUDED
AVEC VALEUR DE COUTURE
CON MARGEN DE COSTURA

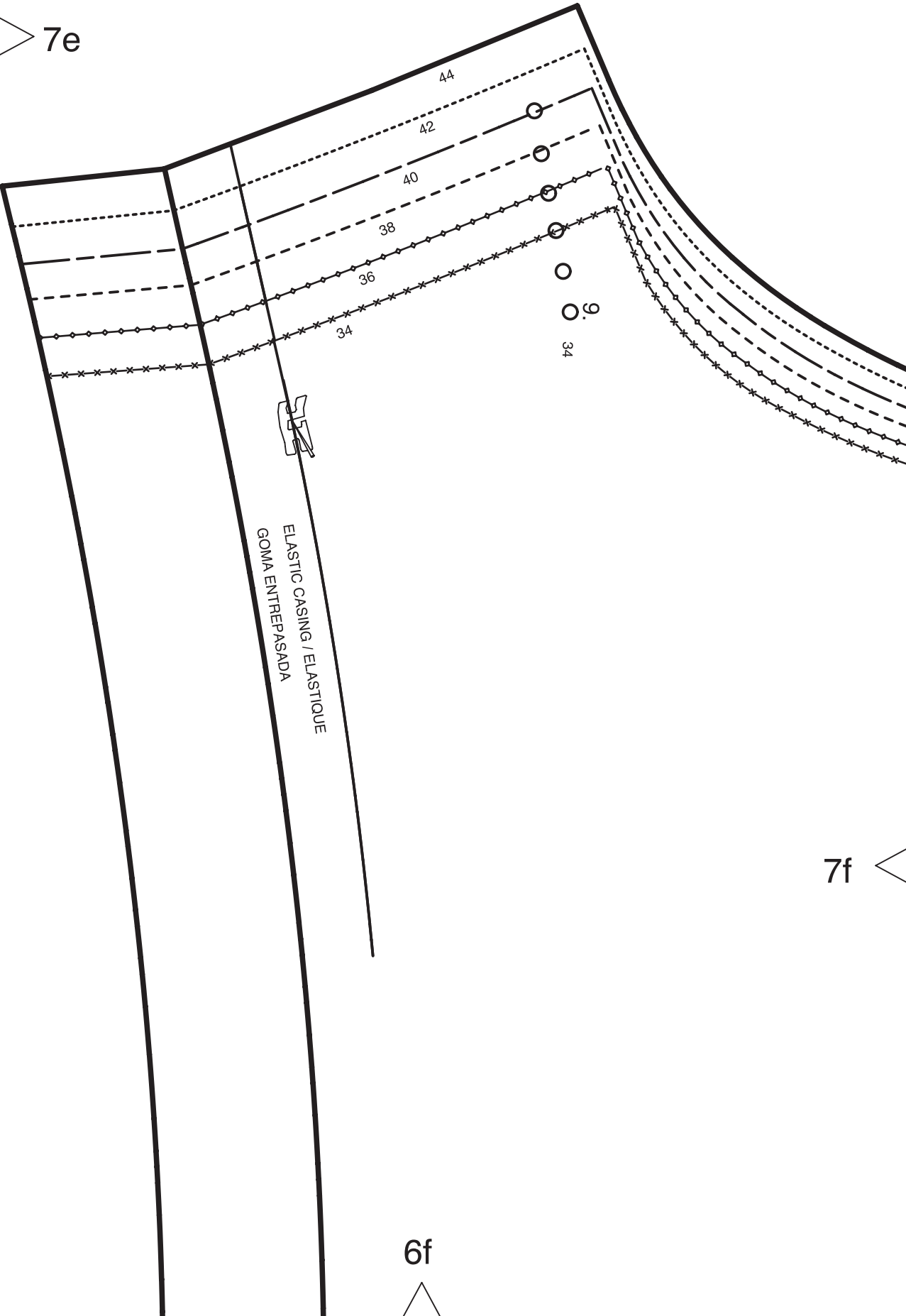
9306

STRAIGHT GRAIN
DROIT FIL
SENTIDO HILO

6e

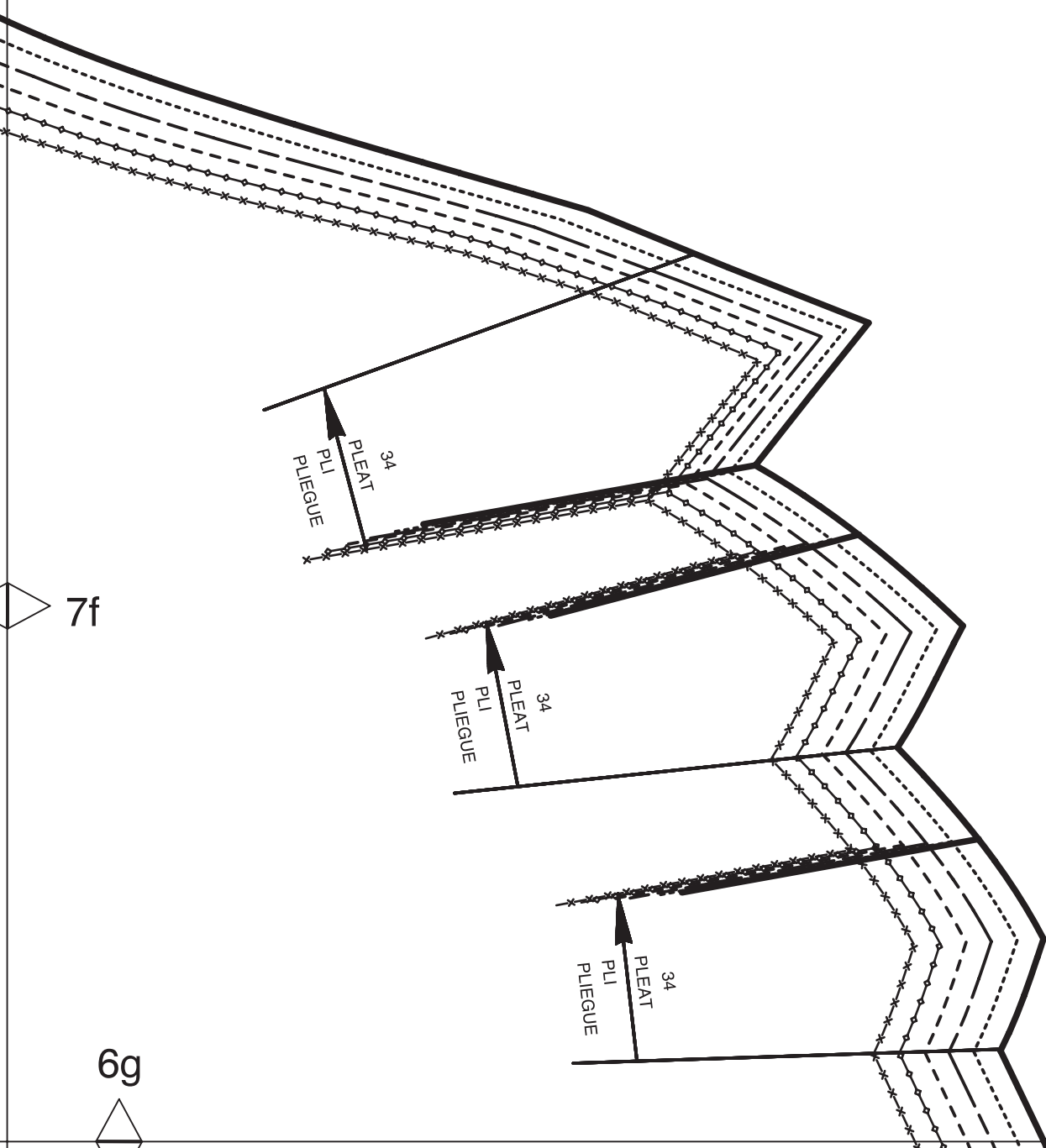


7e



7f

6f



7f

6g