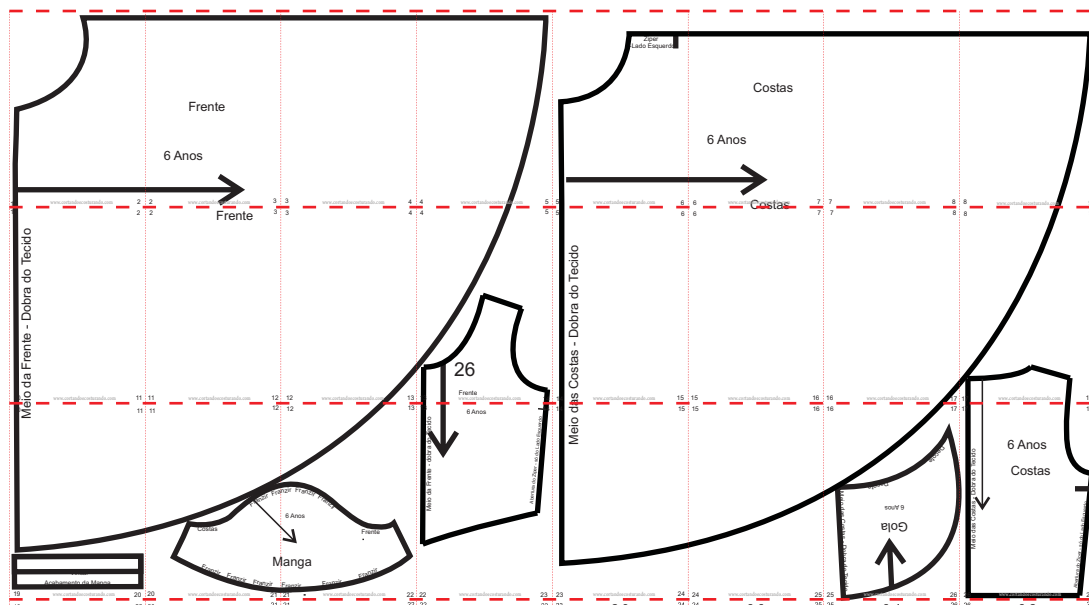


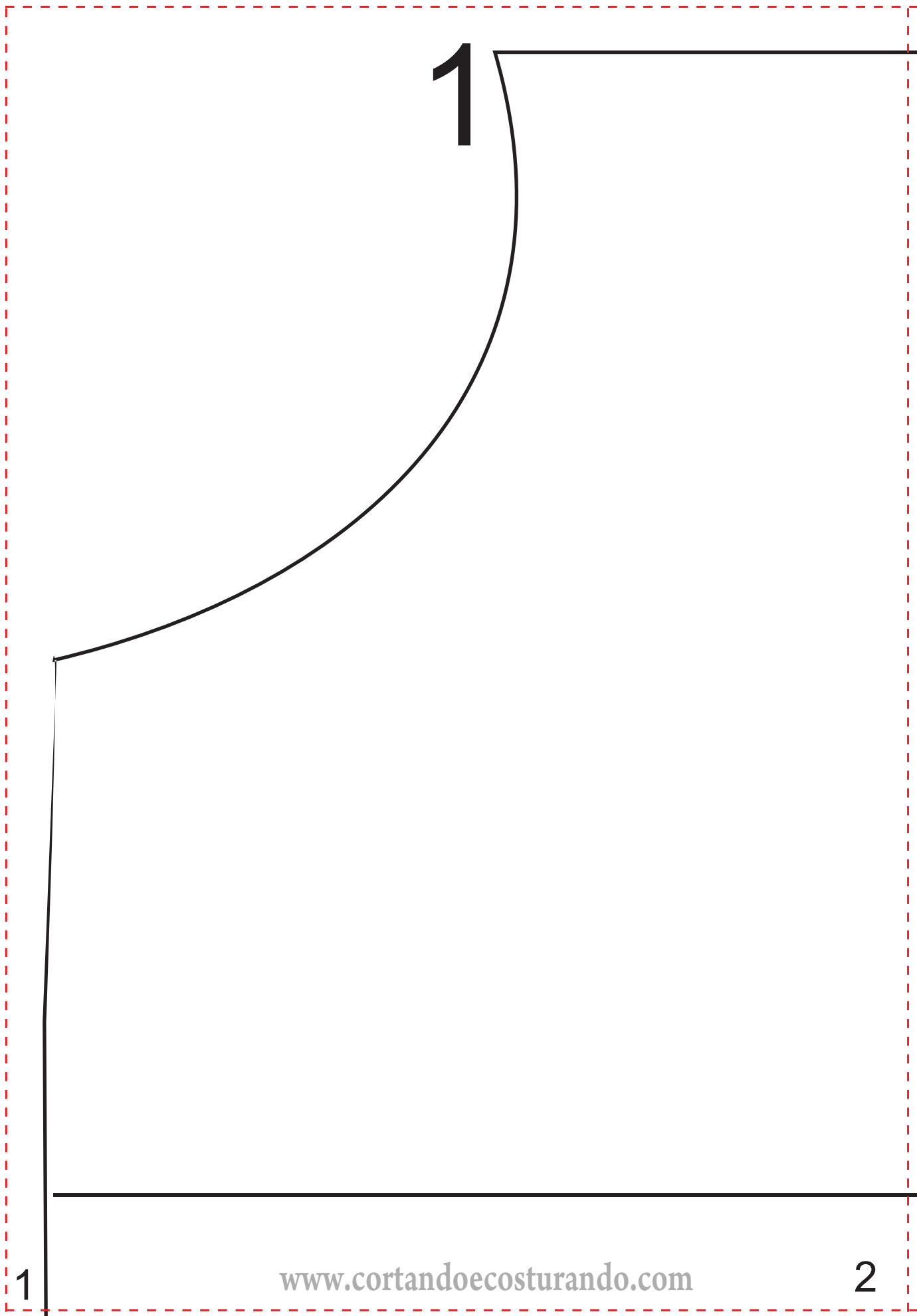
Fantasia da Branca de Neve

Tamanho - 6 anos

Tecido - Cetim

- 2,10m de Tecido amarelo com 1,40m de Largura.
- 0,70m de Tecido Azul Escuro
- 0,70m de Tecido Azul Claro
- 0,25m de Tecido Branco
- 0,25m de Entretela
- Retalhos de Tecido Vermelho.





1

1

2

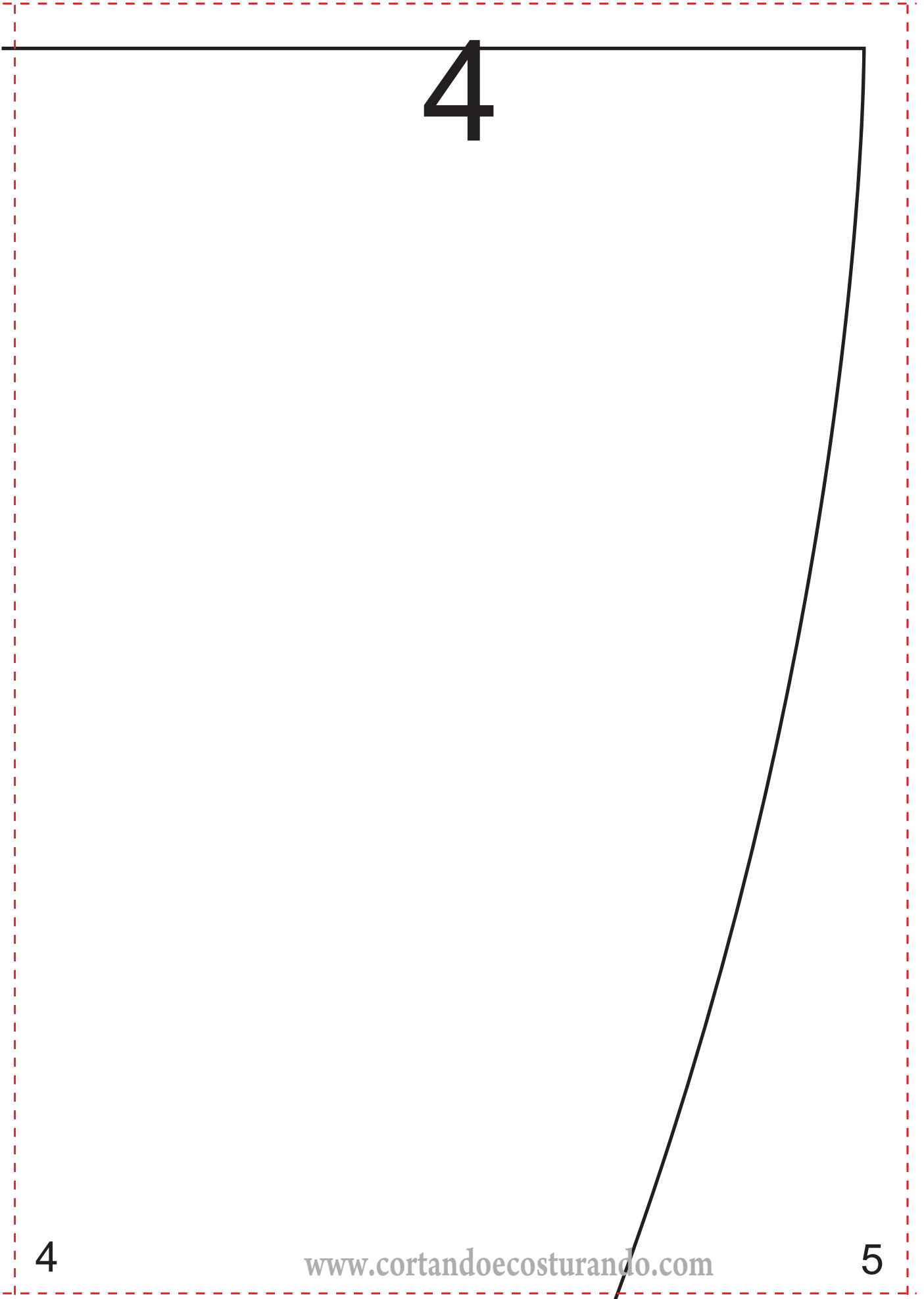
2

Frente

6 Anos



3



4

4

www.cortandoeocosturando.com

5

5

Zipper
-Lado Esquerdo

5

6

6

Costas

6 Anos



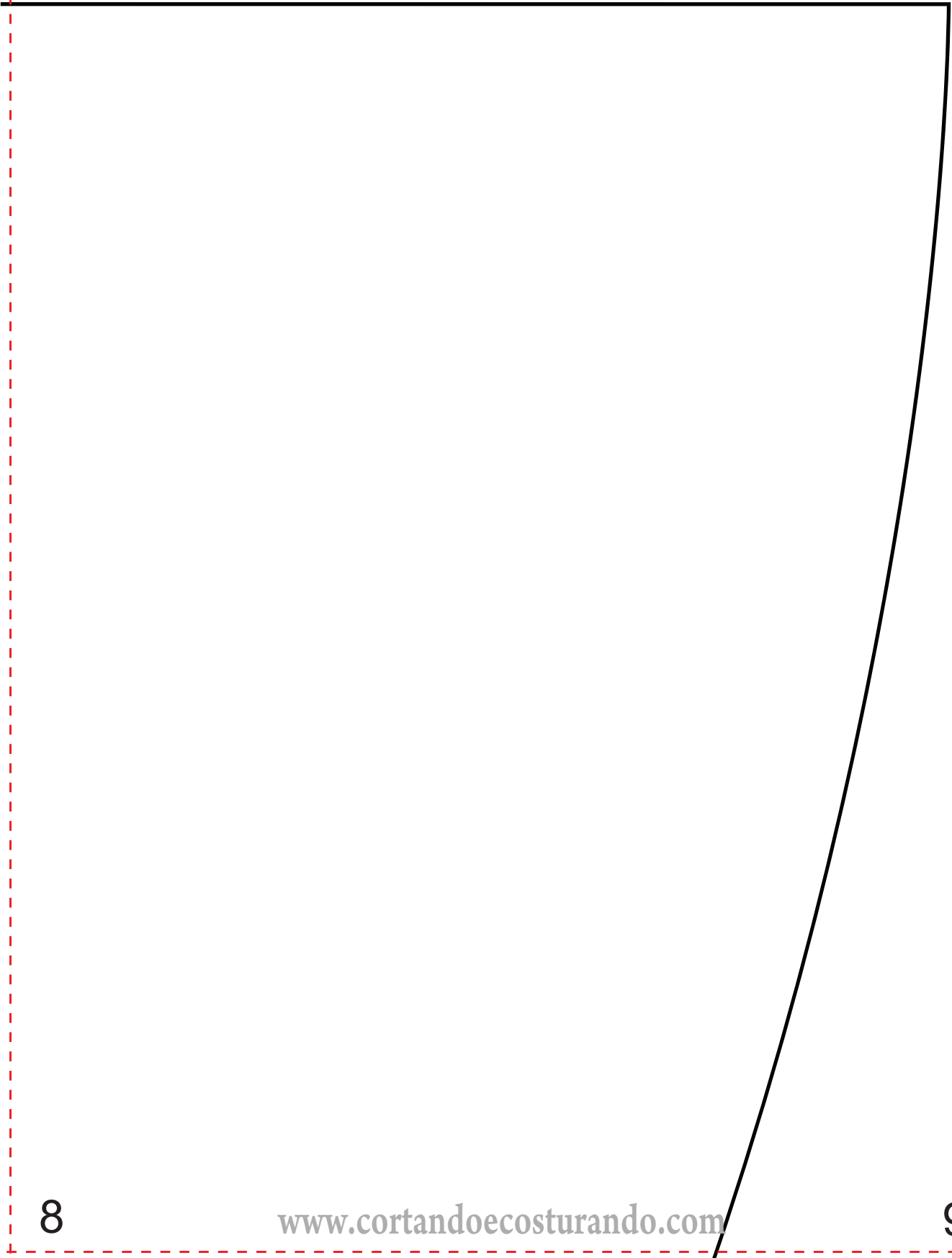
6

7

Costas

7

8



1

2

Brio da Frente - Dobra do Tecido

9

10

11

2

10 Frente

3

11

www.cortandoeocosturando.com

12

3

11

4

12

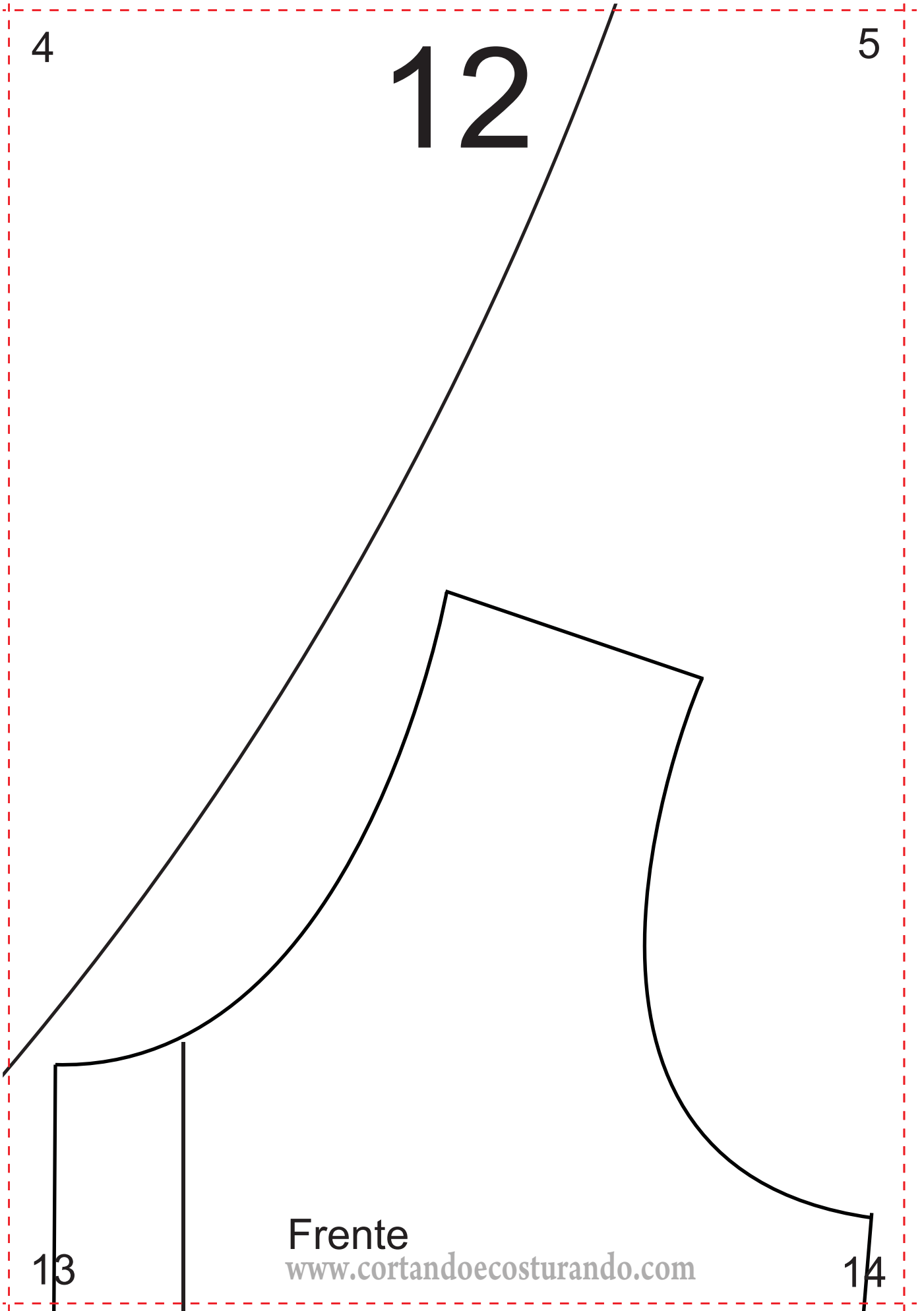
www.cortandoeocosturando.com

13

4

5

12



Frente

www.cortandoecosturando.com

13

14

5

13

6

Costas - Dobra do Tecido

14

www.cortandoecosturando.com

15

Costas

6

14

7

15

www.cortandoeocosturando.com

16

7

15

8

16

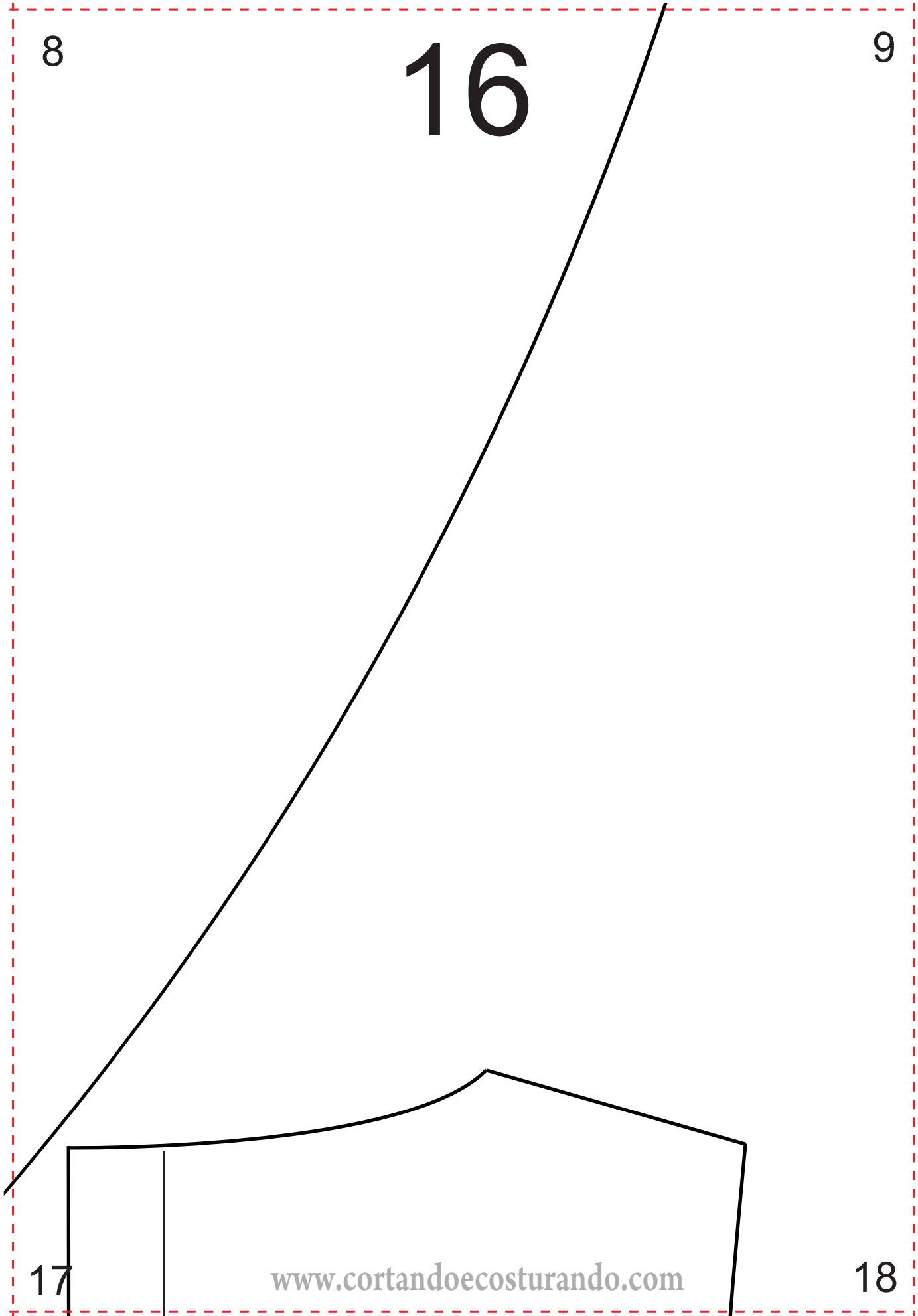
www.cortandoeocosturando.com

17

8

16

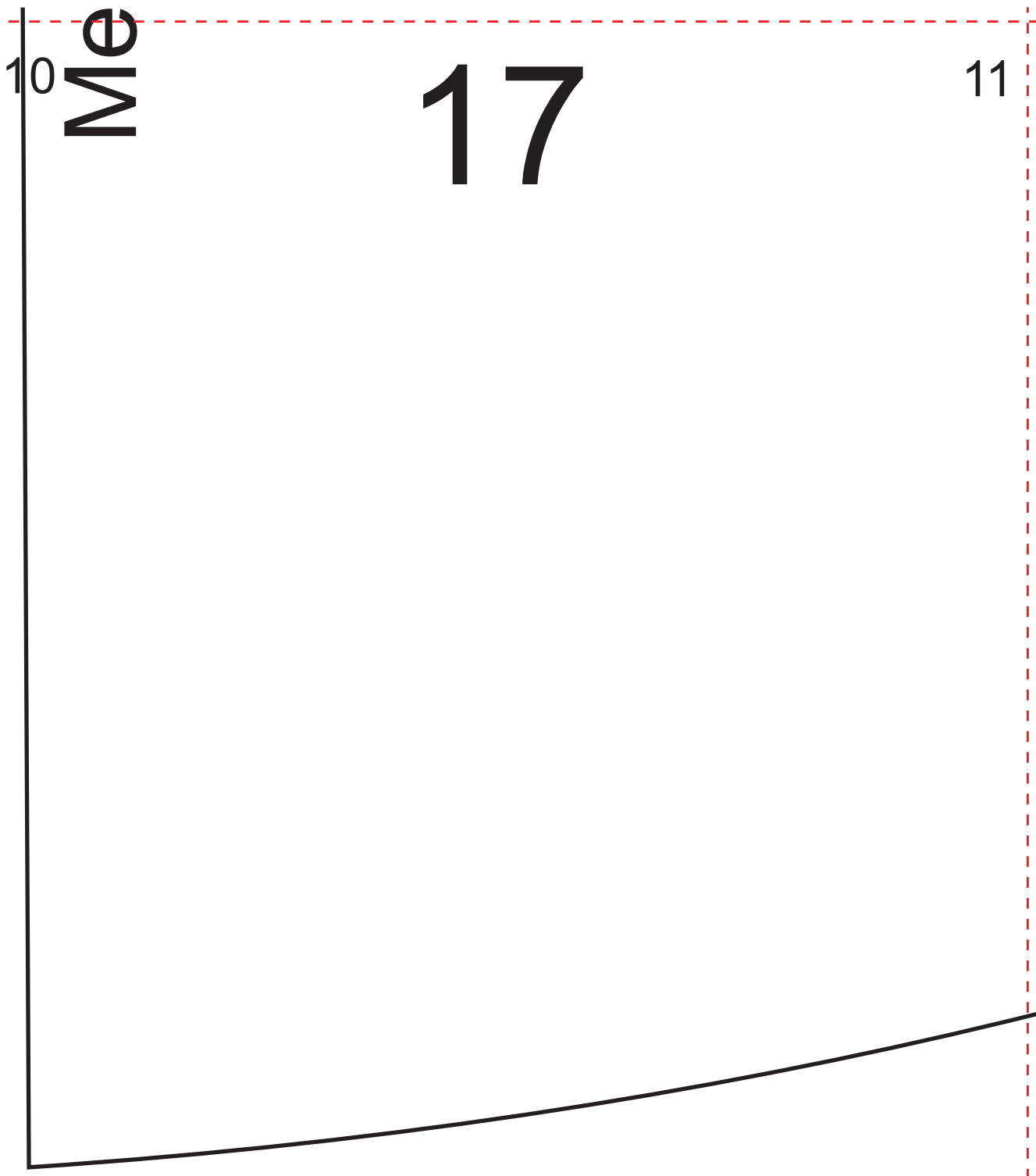
9



17

www.cortandoeccosturando.com

18



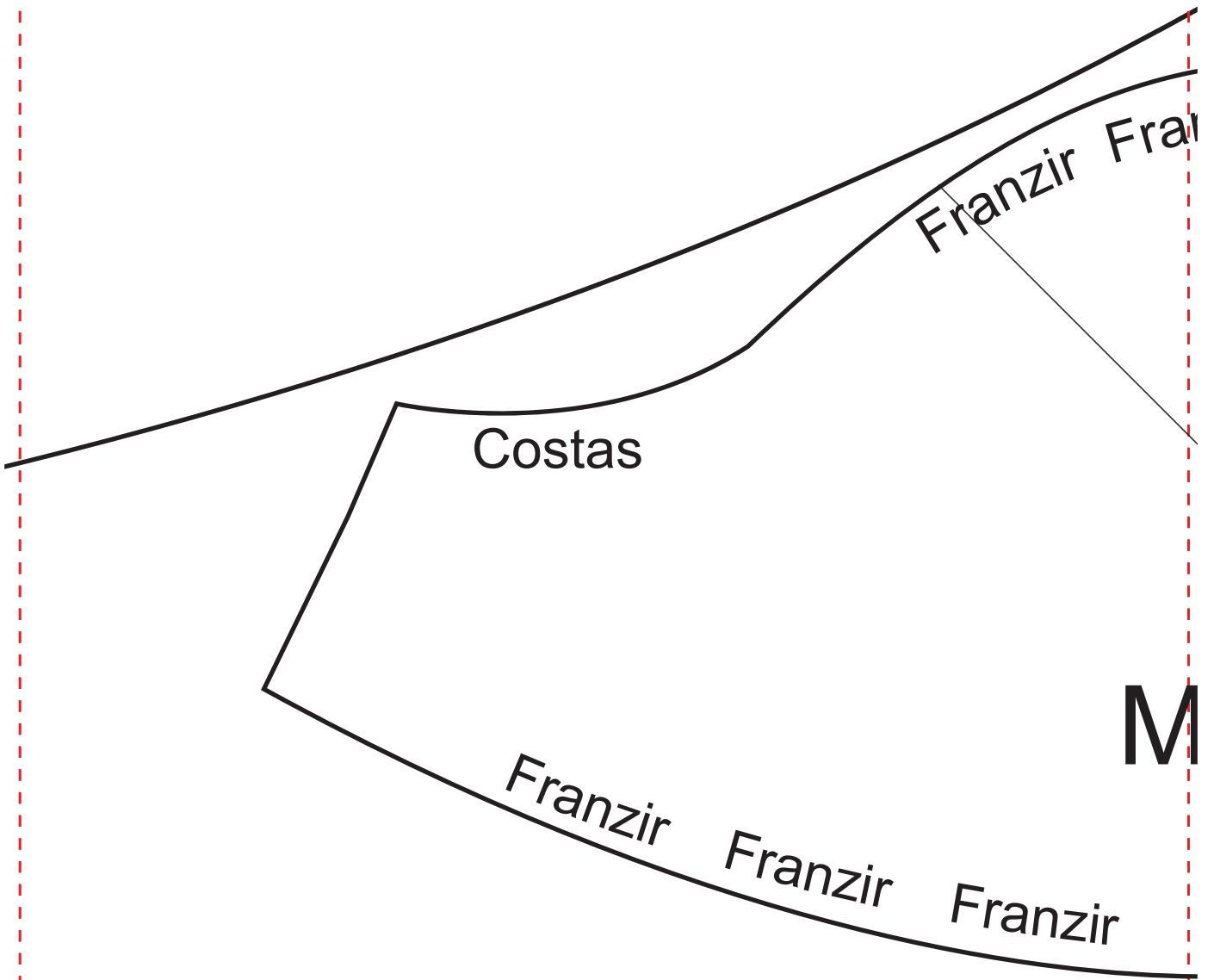
Vincar

Acabamento da Manga

11

18

12



20

21

12

13

19

anzir Franzir Franzir

6 Anos

Frente

1anga

Franzir

Franzir

Franzir

21

-

22

13

Meio da Frente - dobra do Tecido



6 Anos

20

14

Abertura do Ziper - só do Lado Esquerdo

22

23

14

Meio da

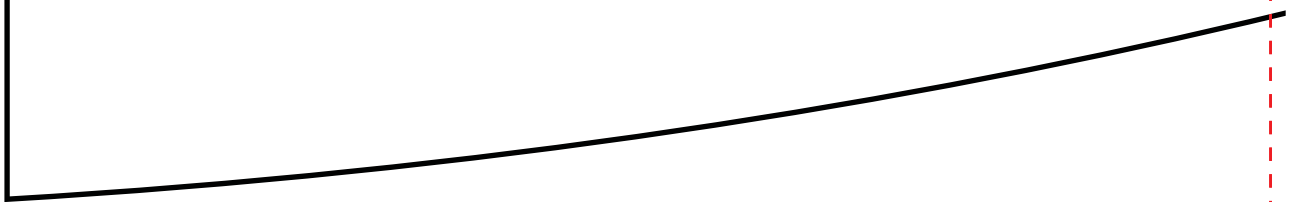
21

15

23

www.cortandocosturando.com

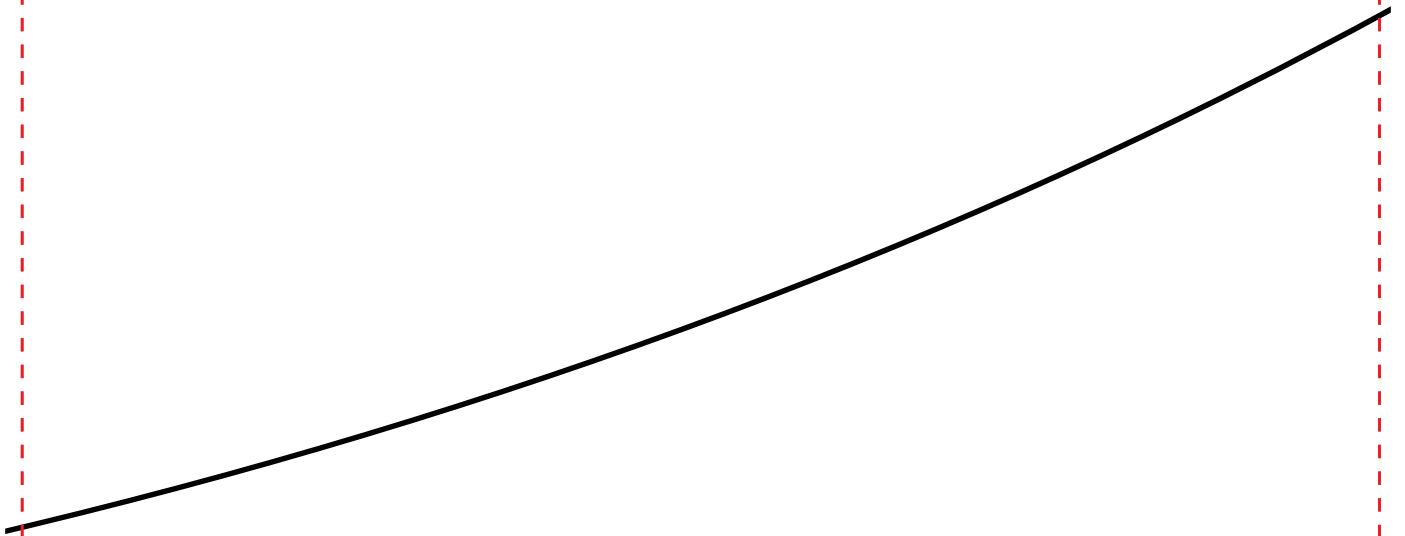
24



15

22

16



24

25

16

23

17

Decote

Decote

Meio das Costas - Dobra do Tecido

6 Anos

Gola



25

26

17

18

24

6 Anos

Costas

Meio das Costas - Dobra do Tecido

Abertura do Ziper - só do Lado Esquerdo

26

27