

The Fave Top Pattern



The Fave Top - This top is super simple and easy to make up in your favourite jersey. Comprising only two pattern pieces, the comfortable style gives a lovely, loose draped effect that is longer at the side seams. Perfect for all seasons and is ideal made up in cotton, wool, viscose and linen knits.

Sizes included: (AUS sizing) One Size Fits All

Pattern Pieces:

Front - cut 1 on fold

Back - cut 1 on fold

Recommended Fabrics: cotton, wool, viscose and linen knits (with or without elastane)

Notions: thread, 2.5mm stretch twin needle

Meterage: One Size Fits All - 1.8mts (140cm)

Seam Allowance: This top is to be sewn on an overlocker/serger with neckline and hems sewn using 2.5mm stretch twin needle on a sewing machine. **NB:** seam allowances are included and are 3/8" wide (overlocker seam width). Please take the seam allowances specified in sewing instructions.

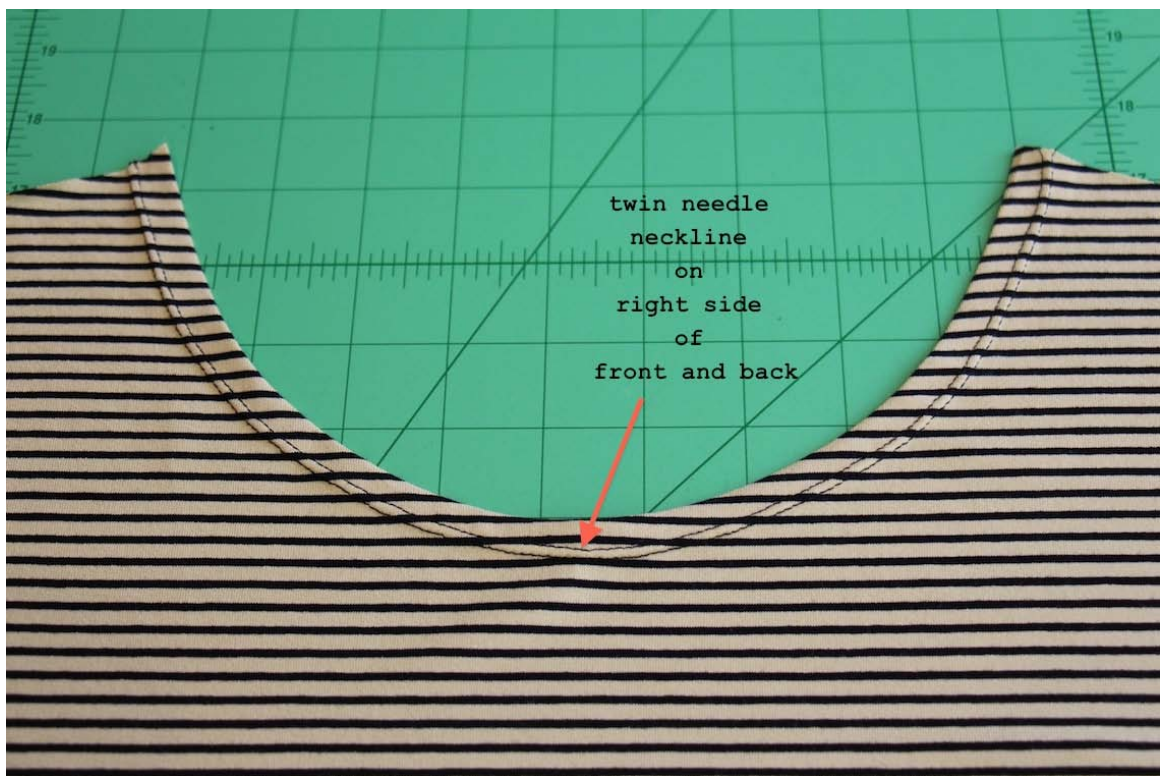
Sewing level: suitable for all sewing levels.

Fave Top Pattern - Sewing Instructions

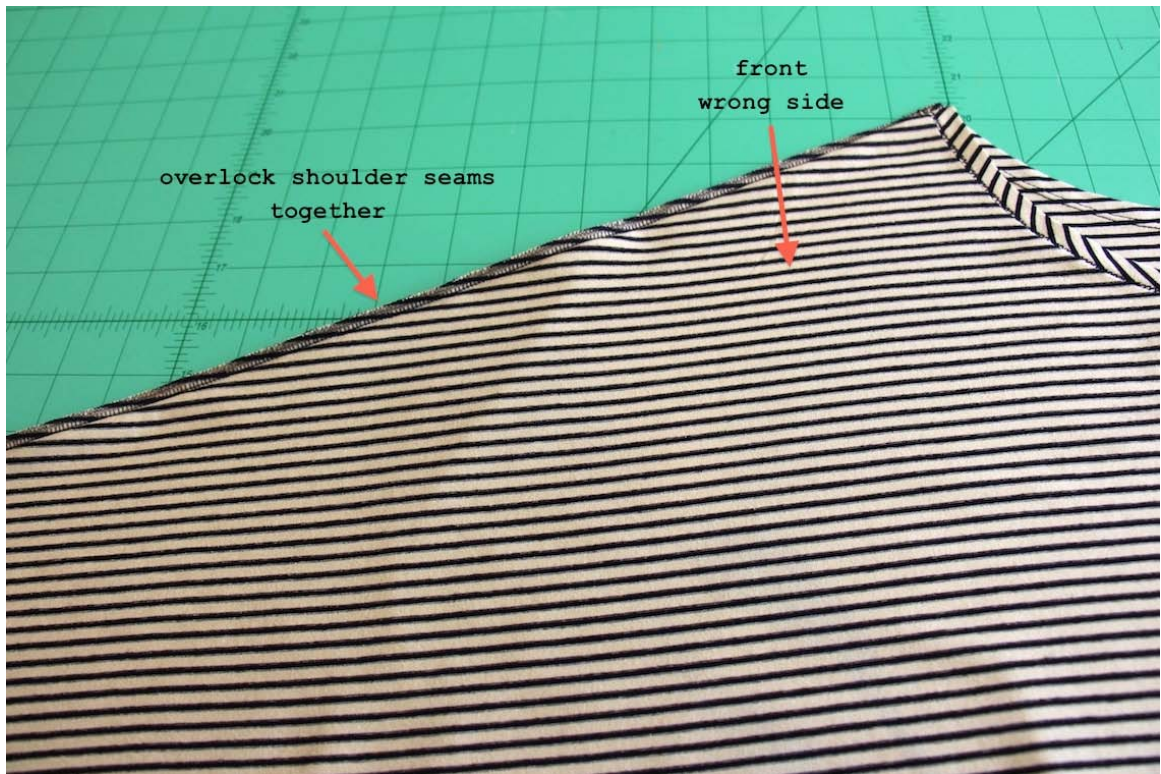
Please read instructions thoroughly before cutting and sewing.

Step 1: Turn back front and back necklines and pin 5/8" towards wrong side of garment.

Step 2: Transfer pins to right side of front and back necklines and sew 5/8" seam with 2.5mm stretch twin-needles. Make sure to sew with right side of neckline facing up.



Step 3: Pin front and back shoulders with right sides facing and then overlock seams together. Press seam towards back.



Step 4: Pin front and back side seams with right sides facing and then overlock seams together.



Note: Follow line of hem angle when overlocking side seams together. Press seam towards back.



Step 5: Turn back and press body hem $\frac{3}{4}$ " and sleeve hem $\frac{1}{2}$ " towards wrong side, taking care not to stretch hems when pressing.



Pin in place on right side. Sew around hem on top and sleeves with 2.5mm stretch twin-needles. Make sure to sew with right side

facing up and sewing at $\frac{5}{8}$ " seam.



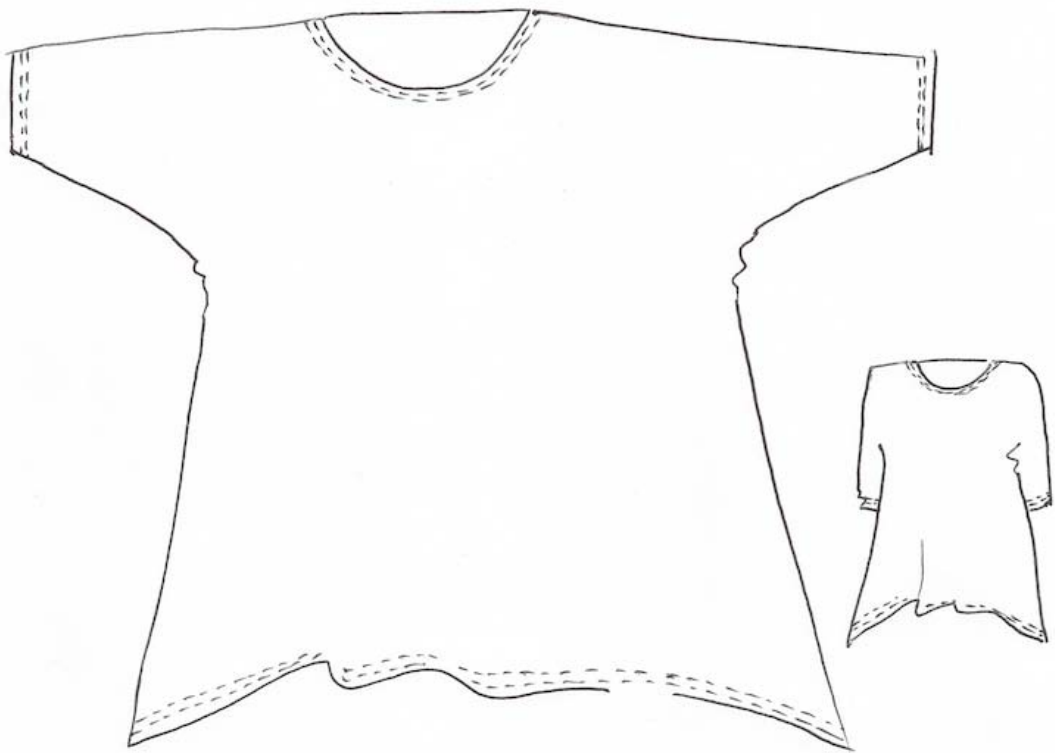
Step 6: Turn top inside out to wrong side. At each edge of neckline, sew a seam starting $\frac{1}{2}$ " down from edge and sewing at an angle (like a dart) approx 1-1 $\frac{1}{4}$ " across to finish to nothing at shoulder seam.



This will give a beautiful finish to your neckline and keep the seam anchored away.

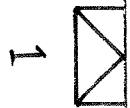


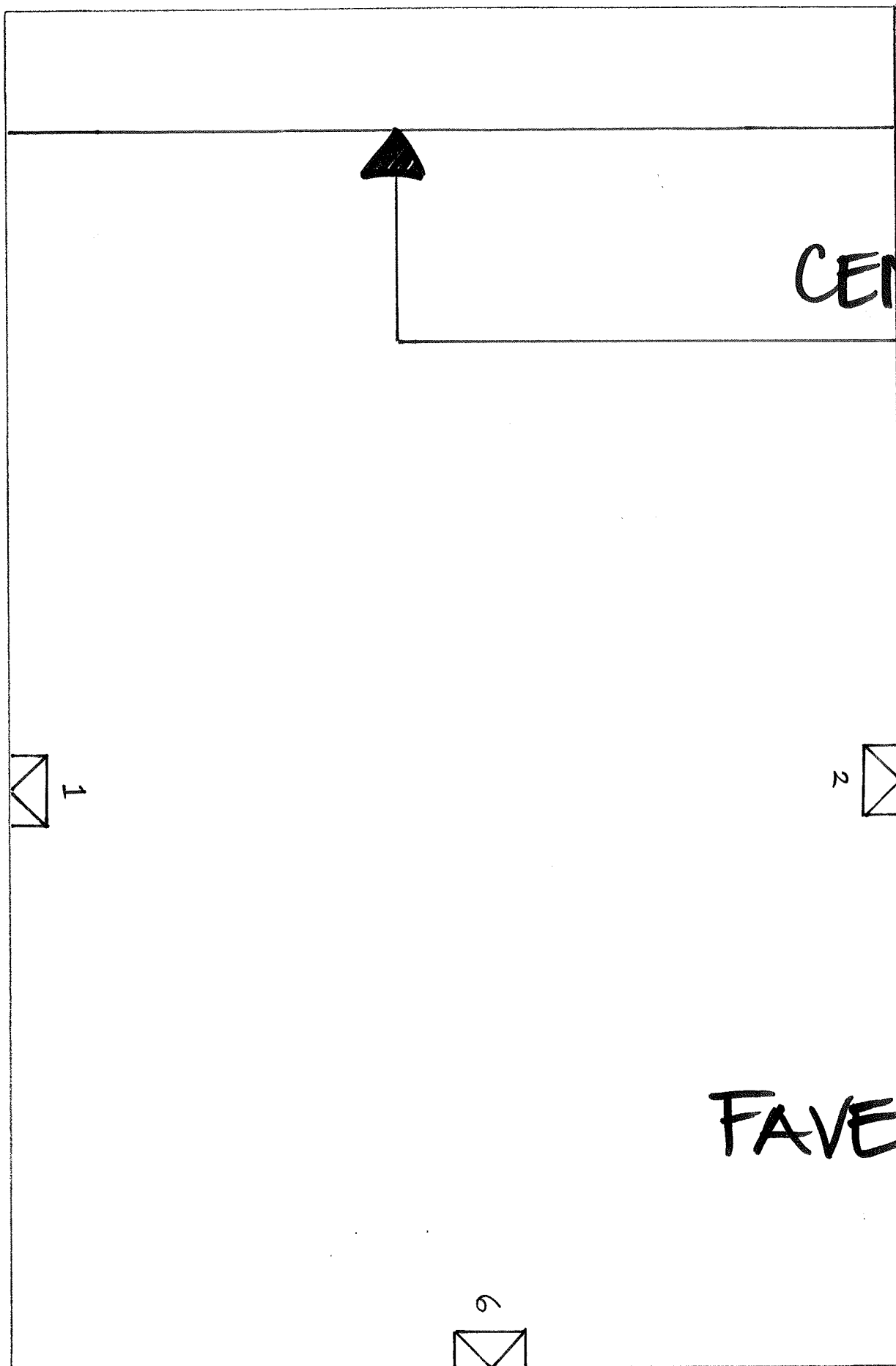
You're done. Enjoy wearing your Fave Top!



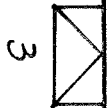
www.tessuti.com.au
www.tessuti.blogspot.com
www.tessuti-shop.com

2" x 2"
TEST
SQUARE
5cm x 5cm



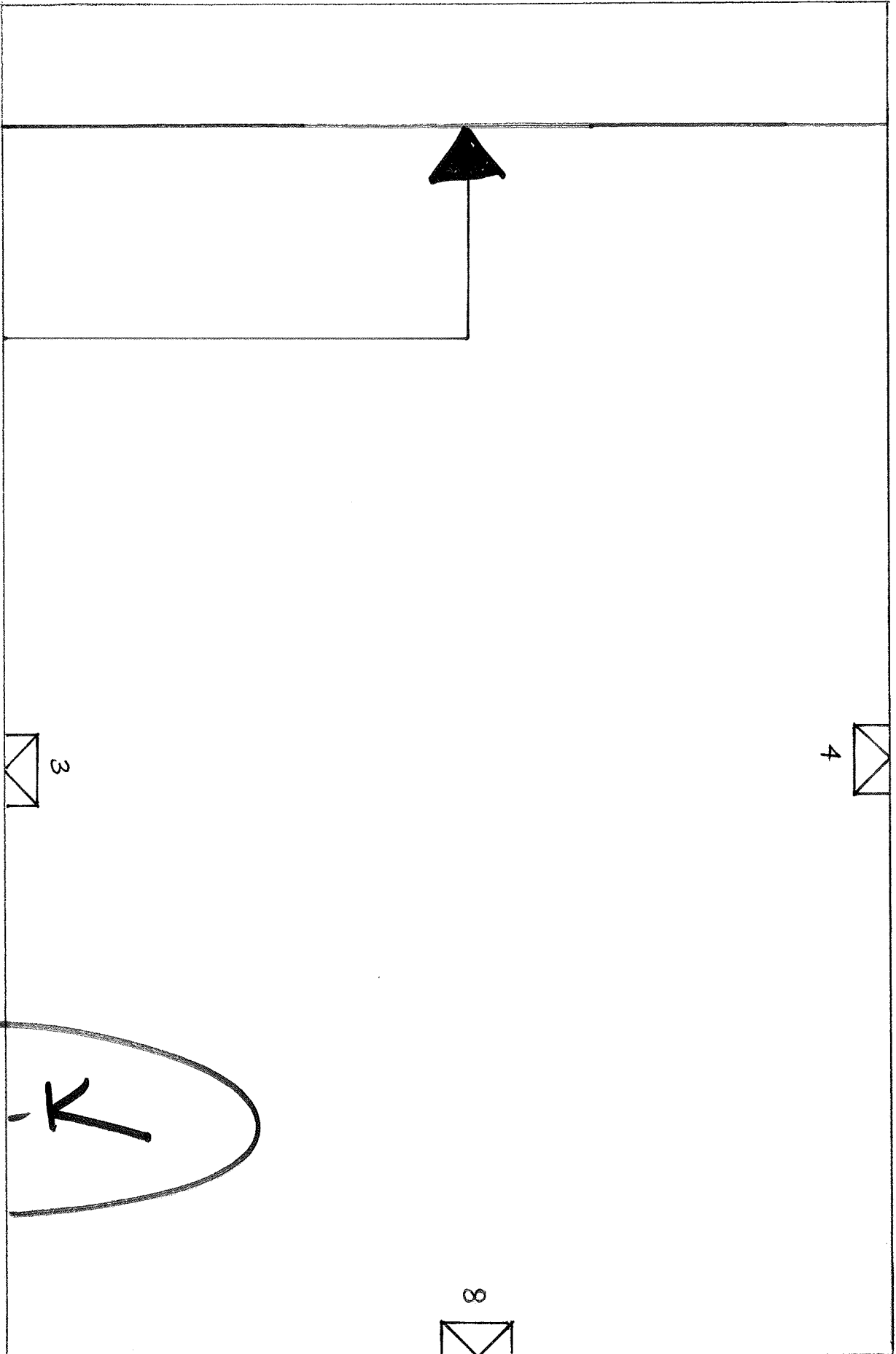


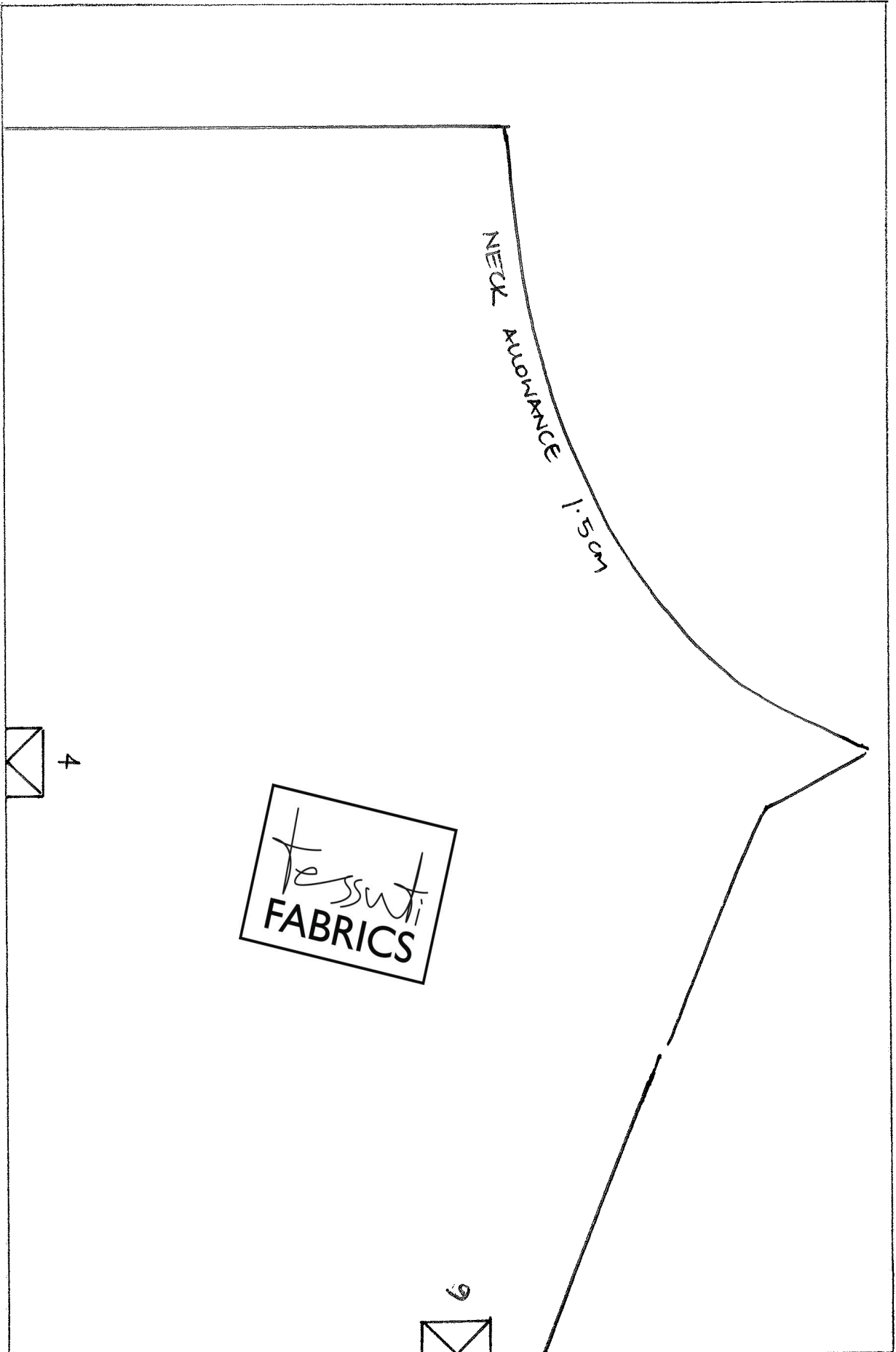
NTRE BACK FOLD

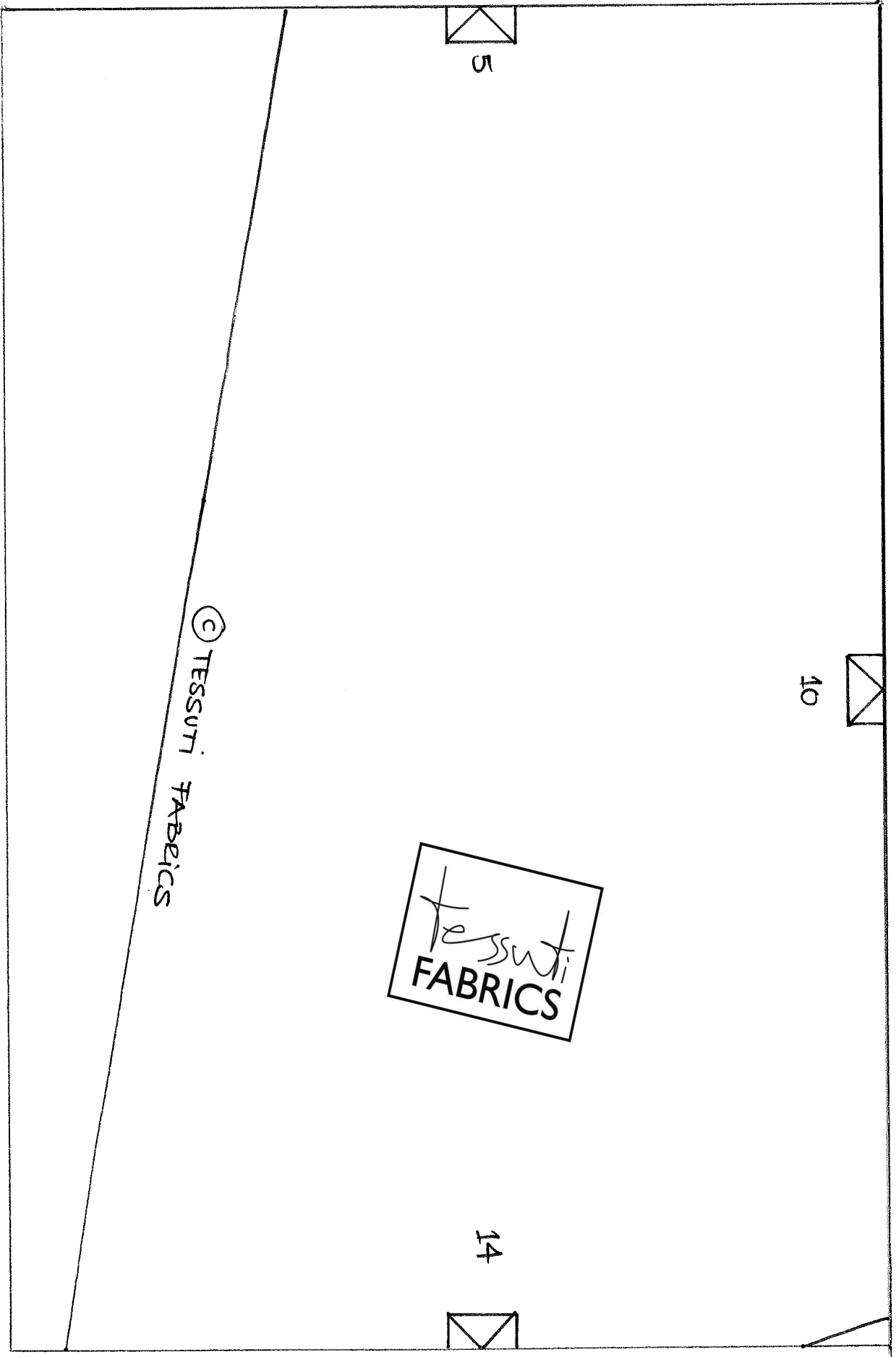


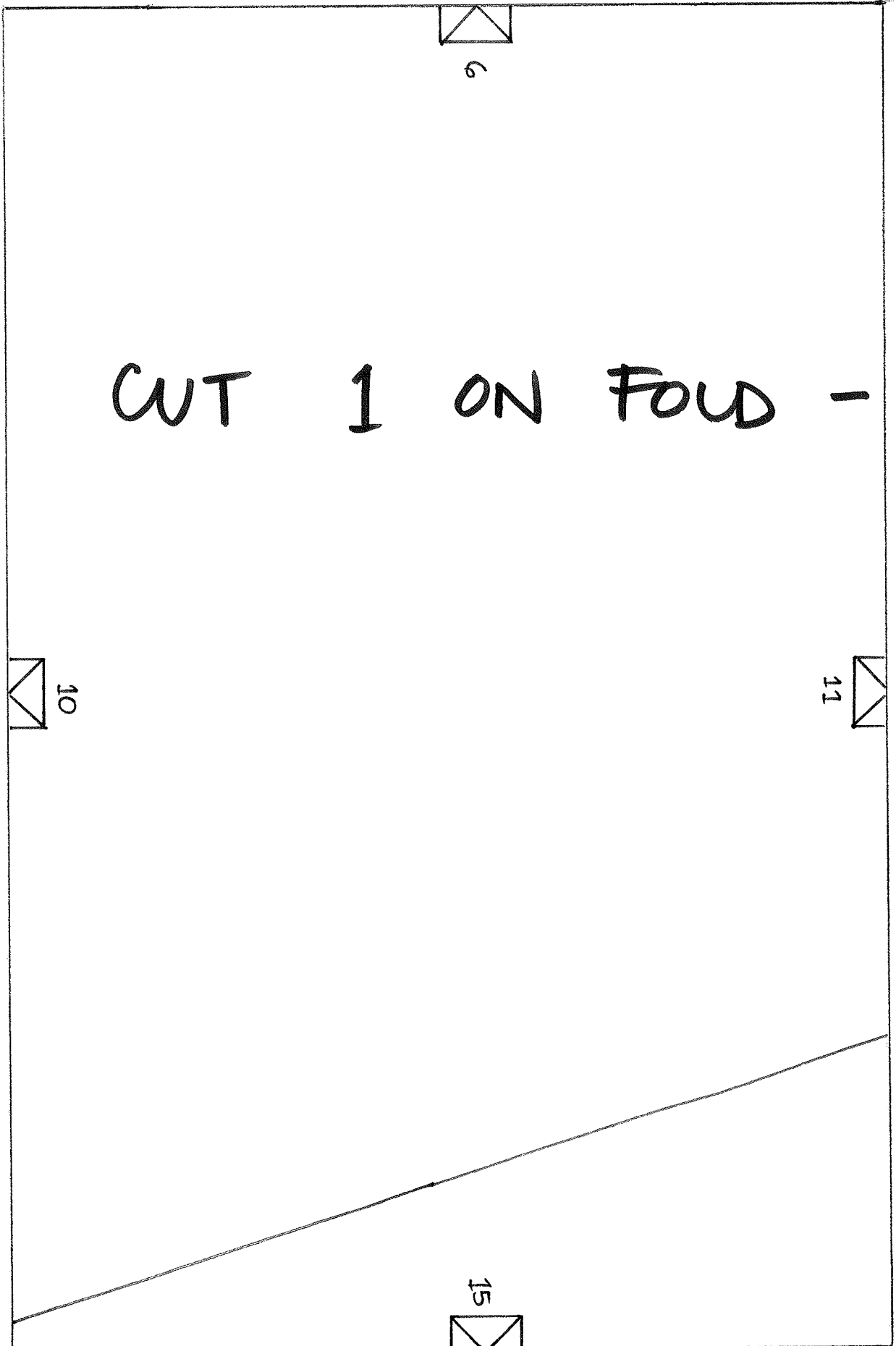
TOP

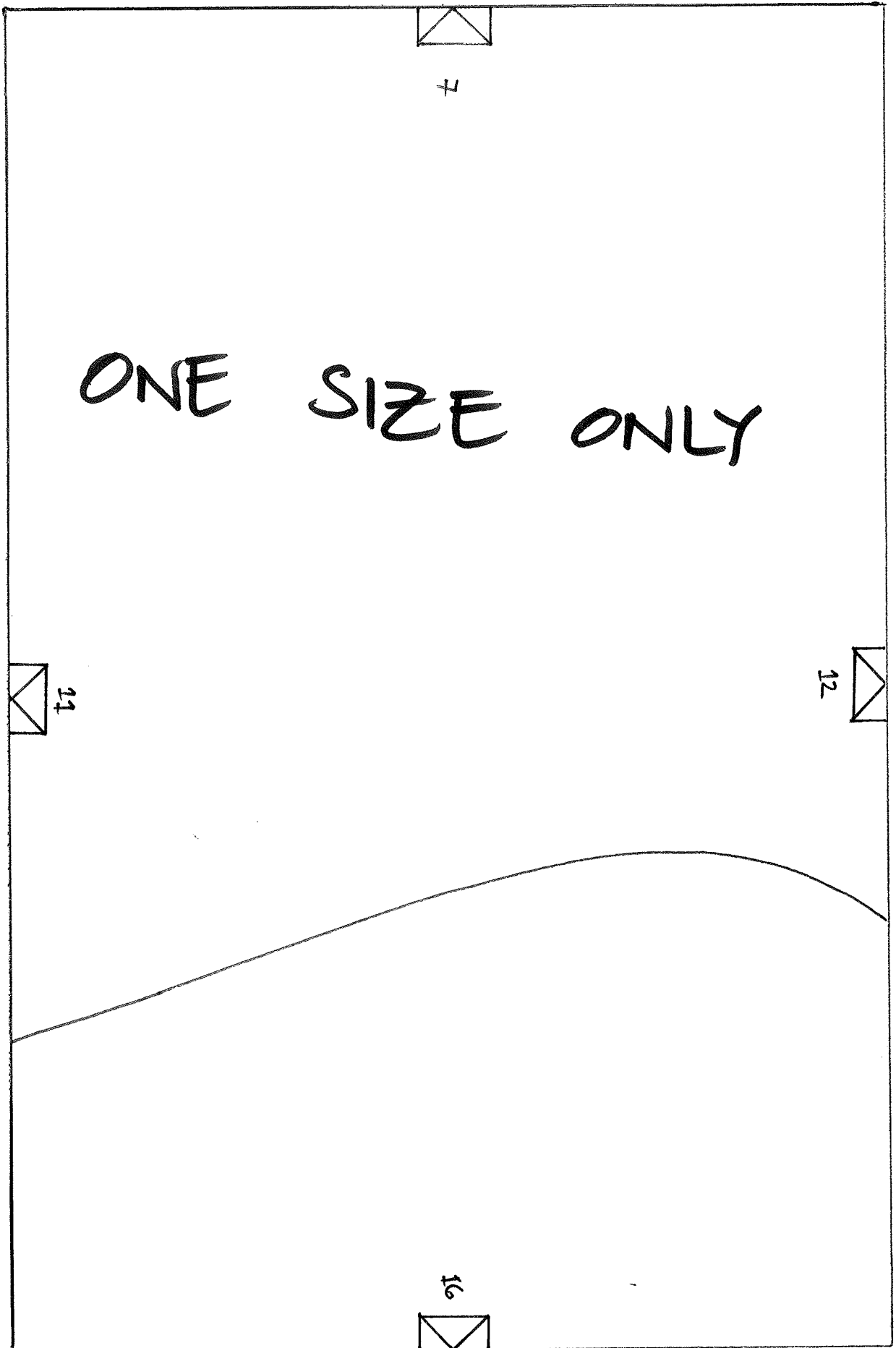


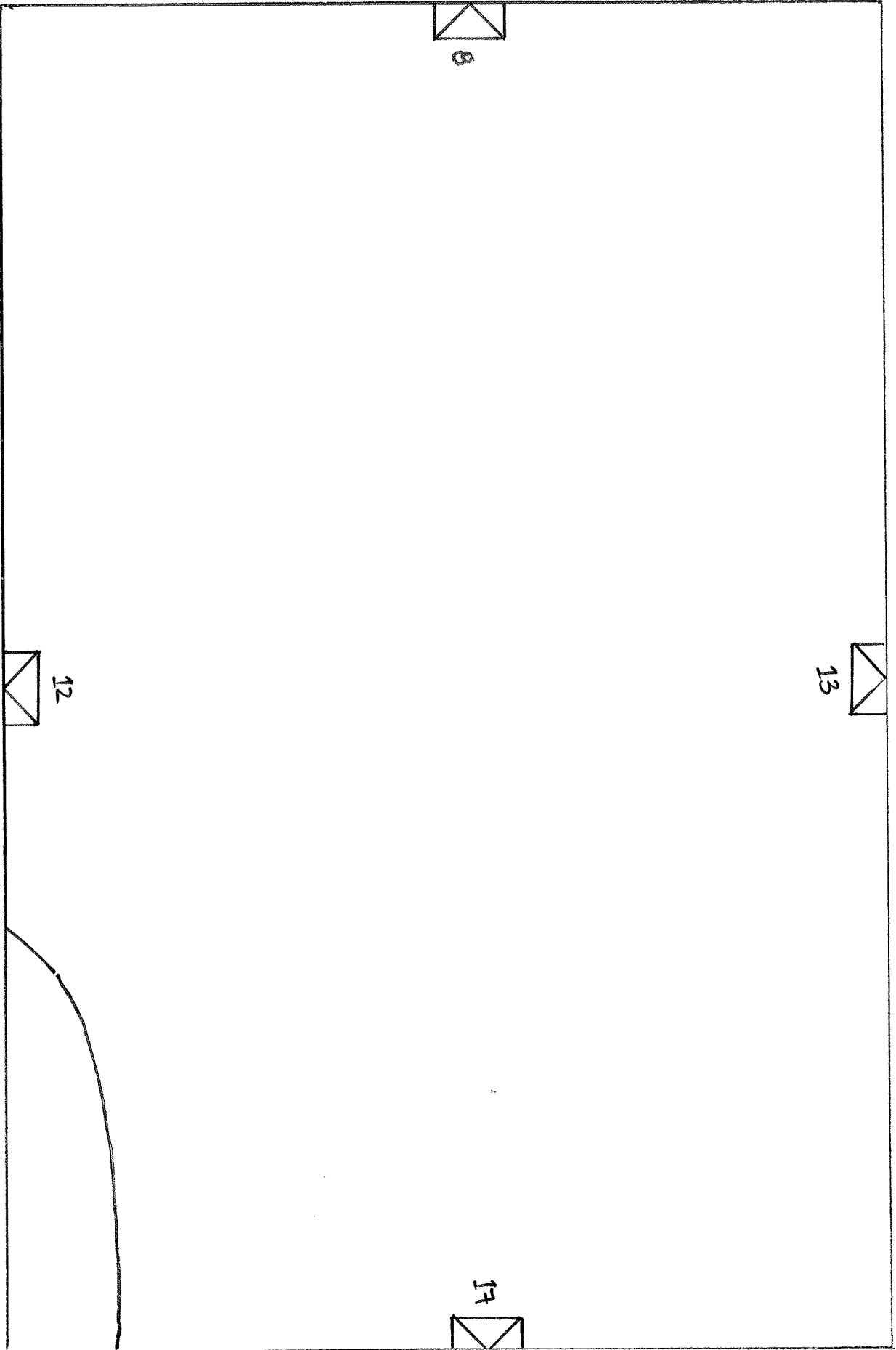


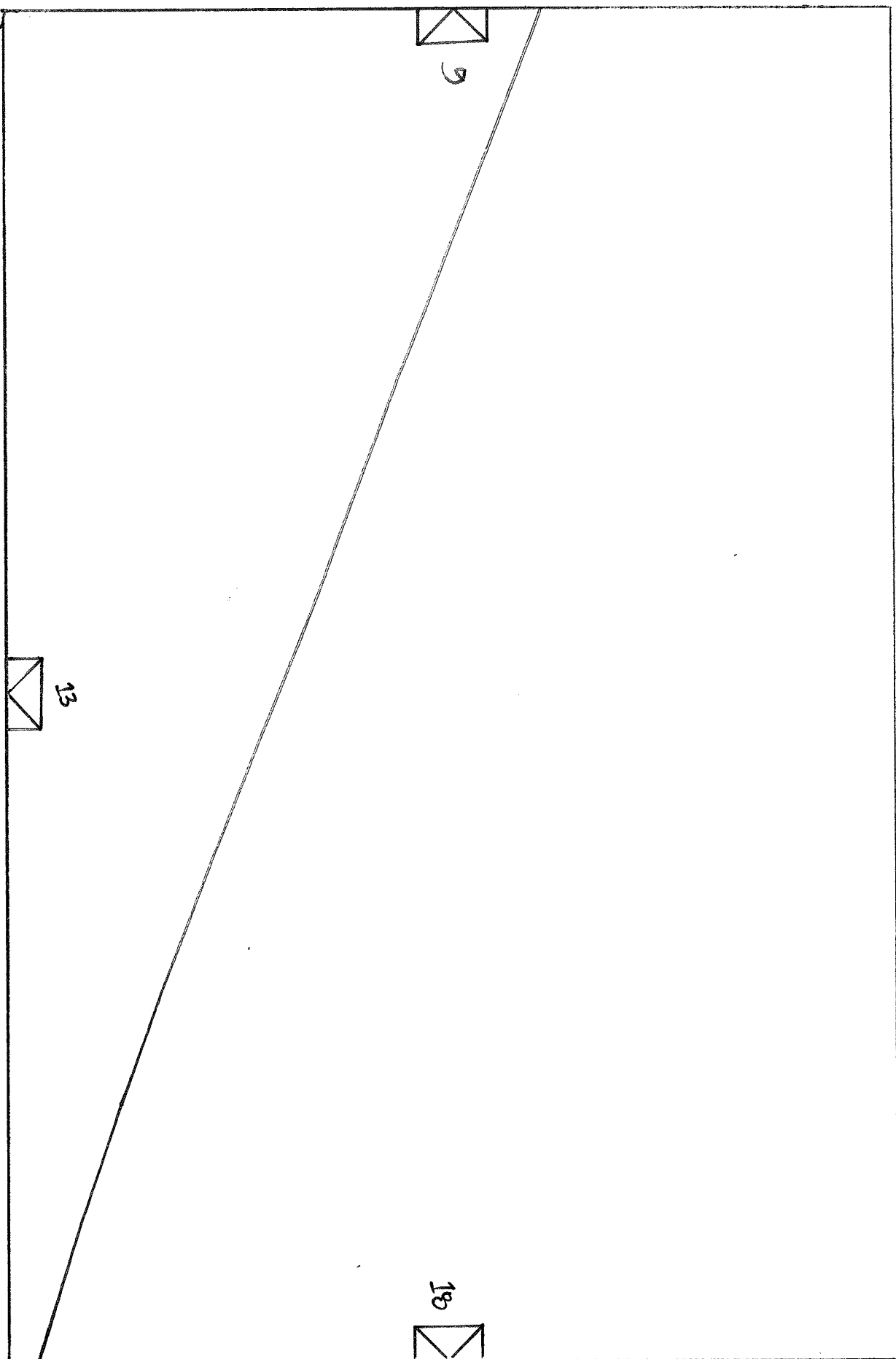


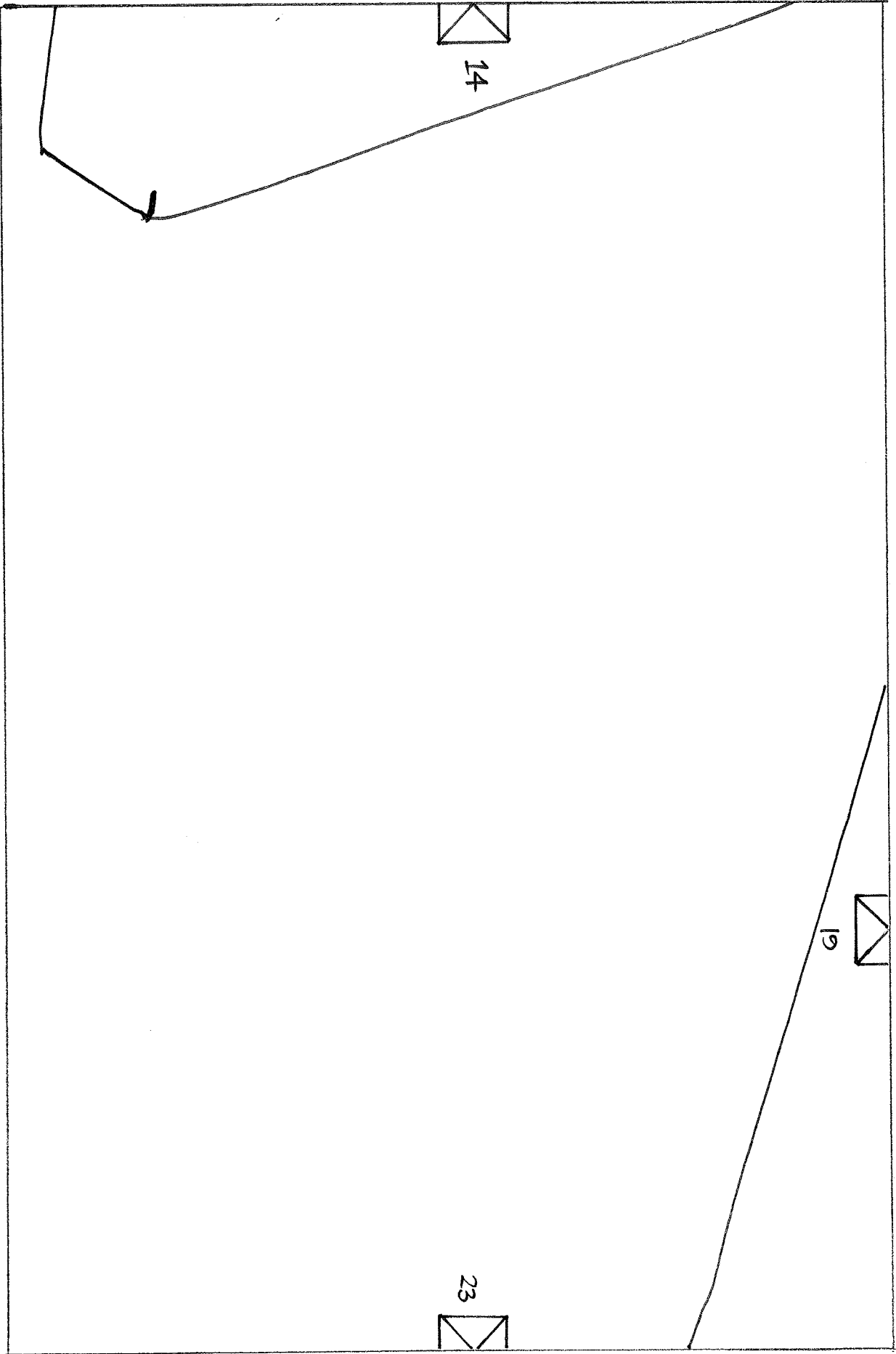


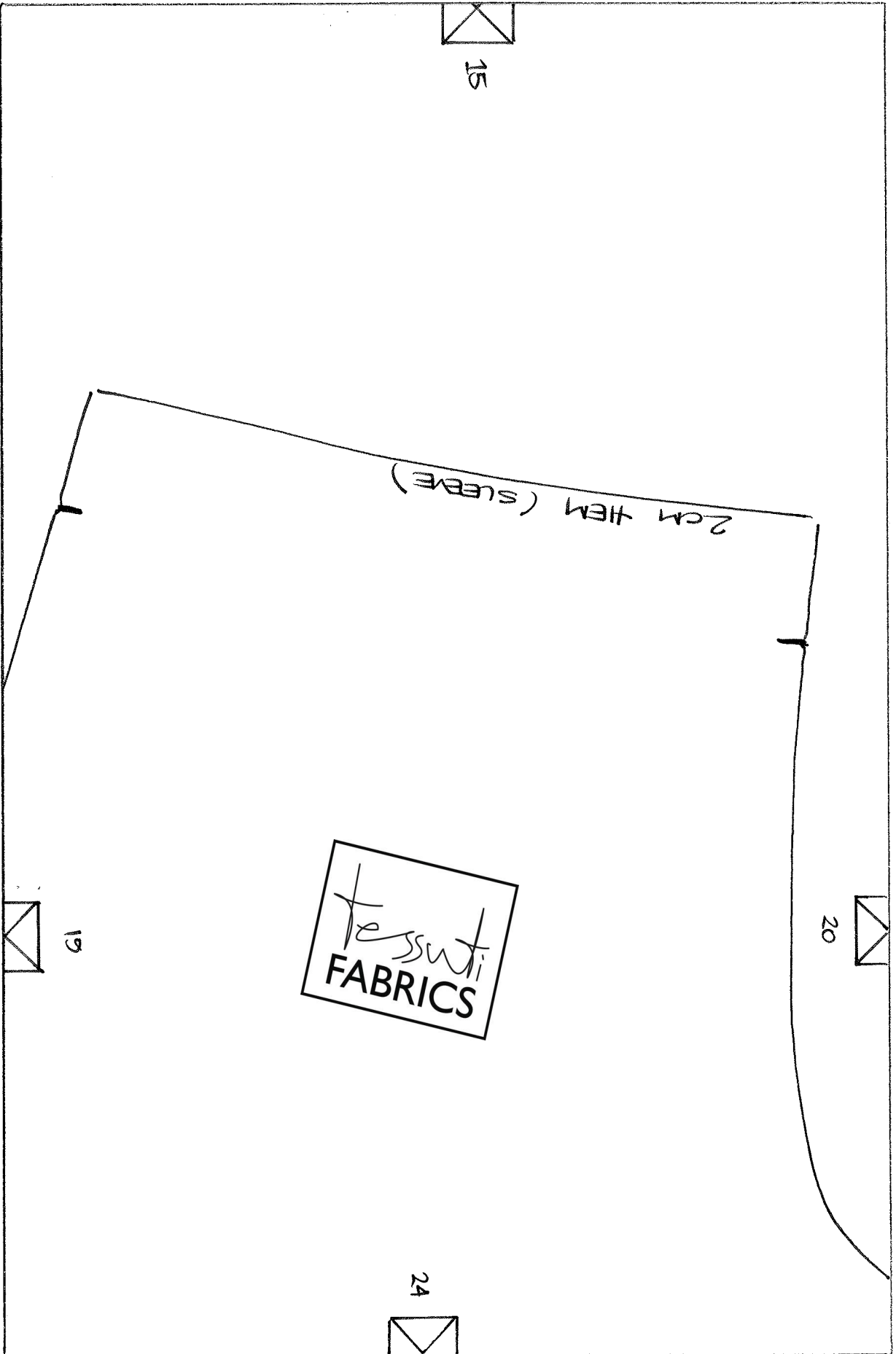


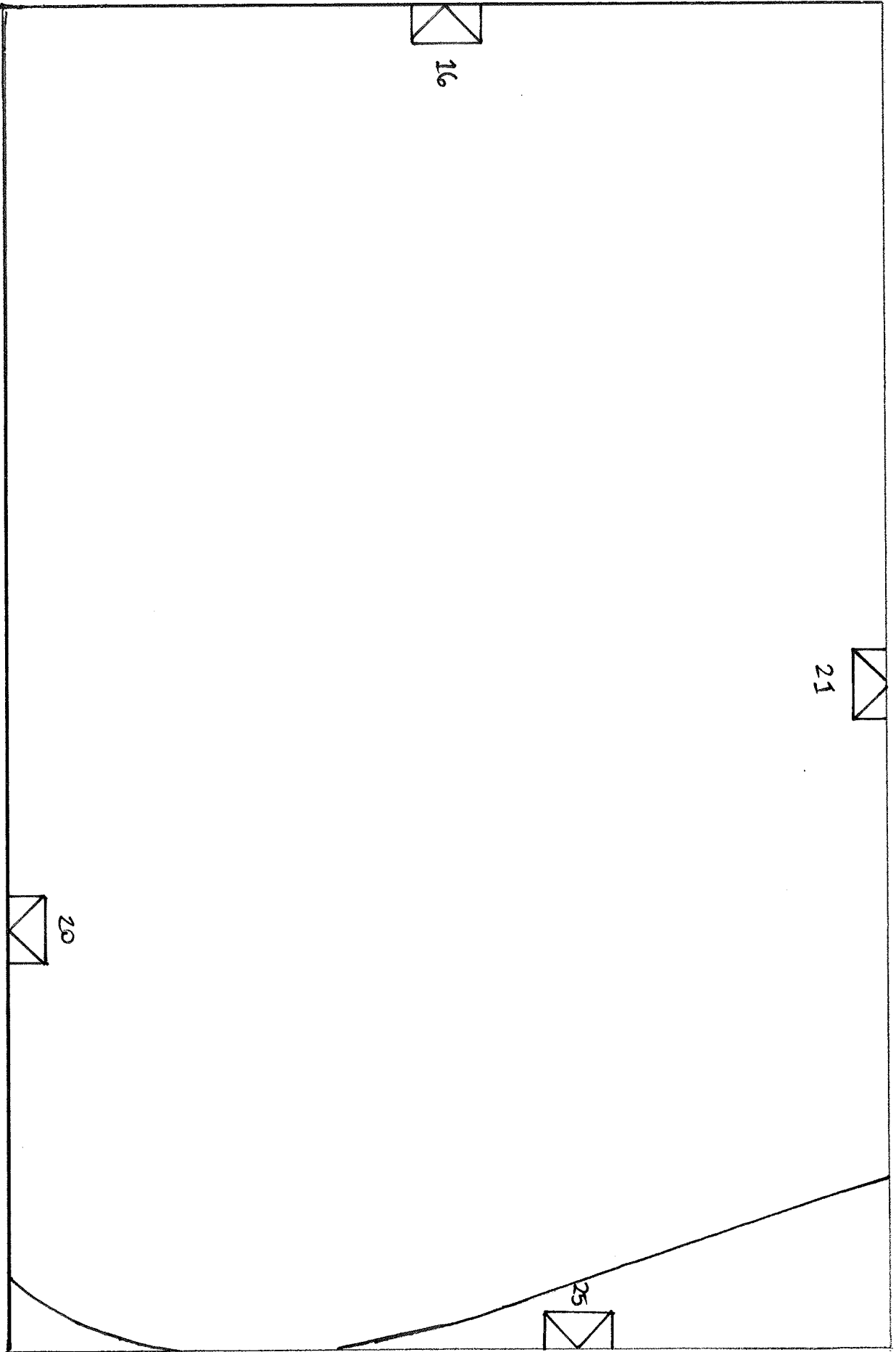


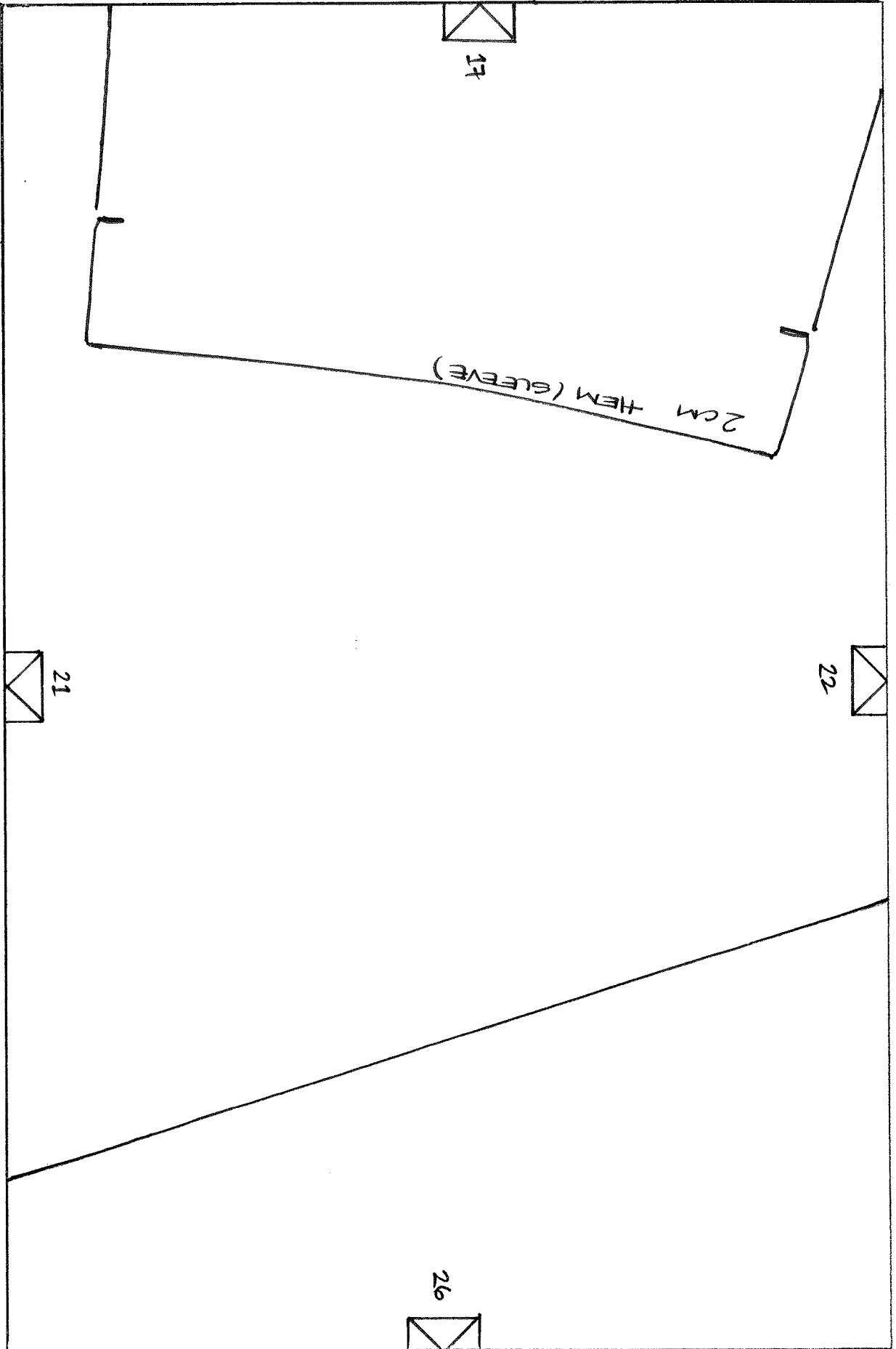


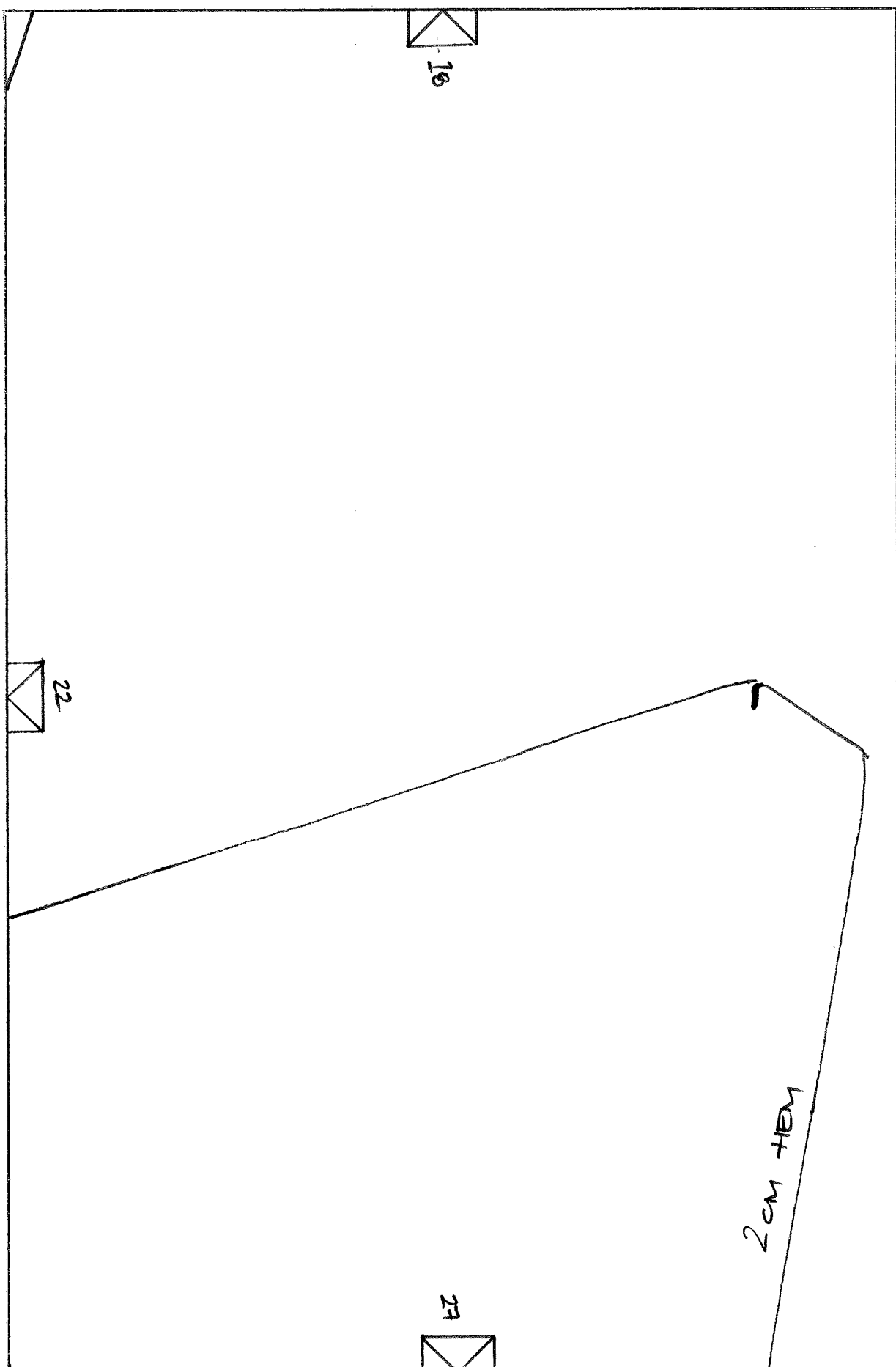


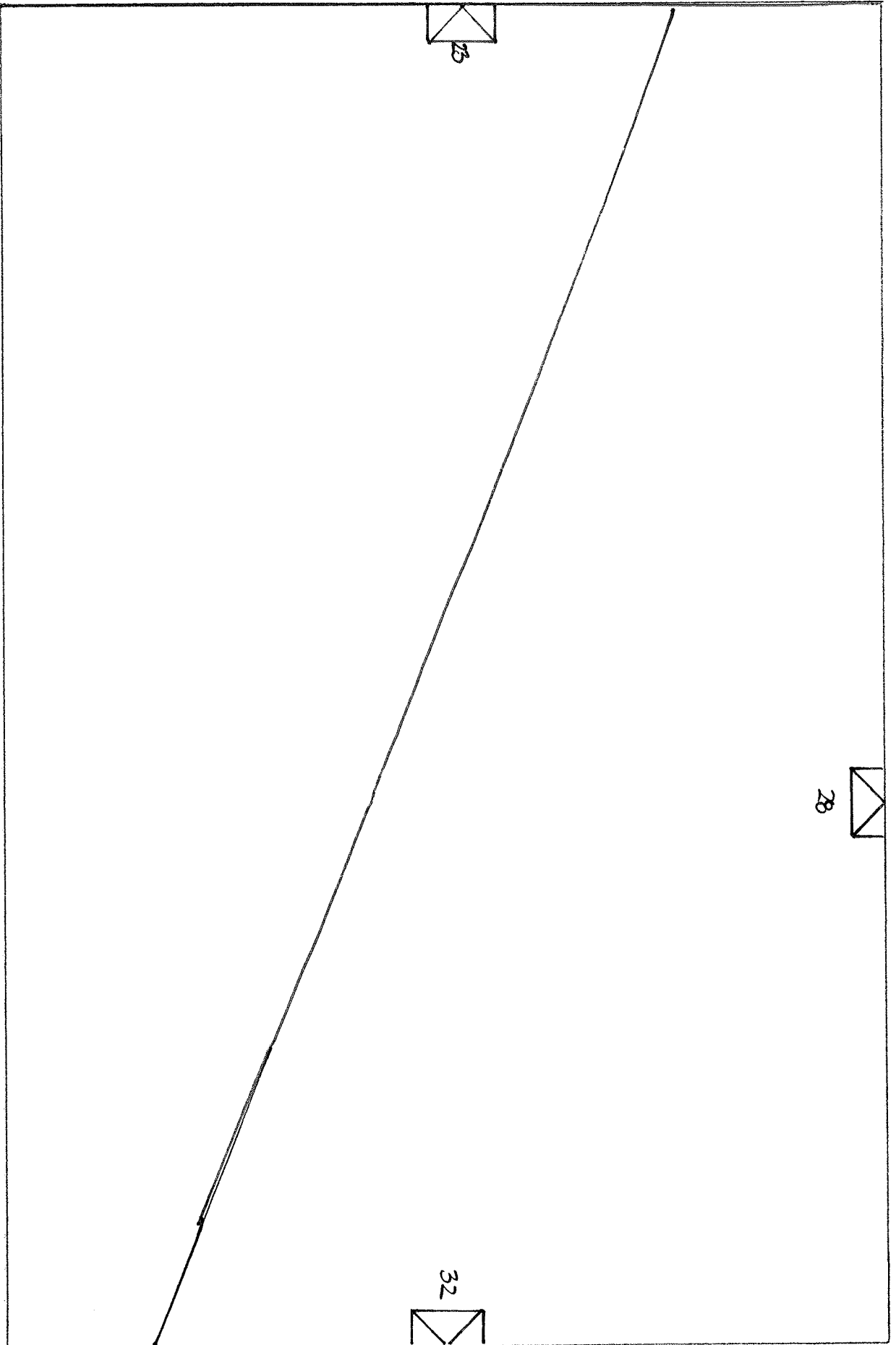














24

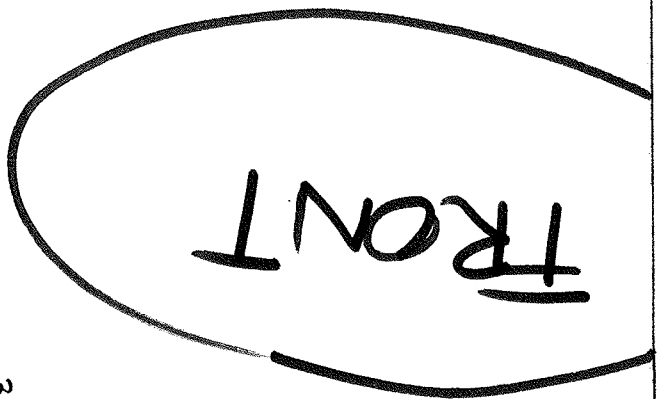
SIZE ONLY



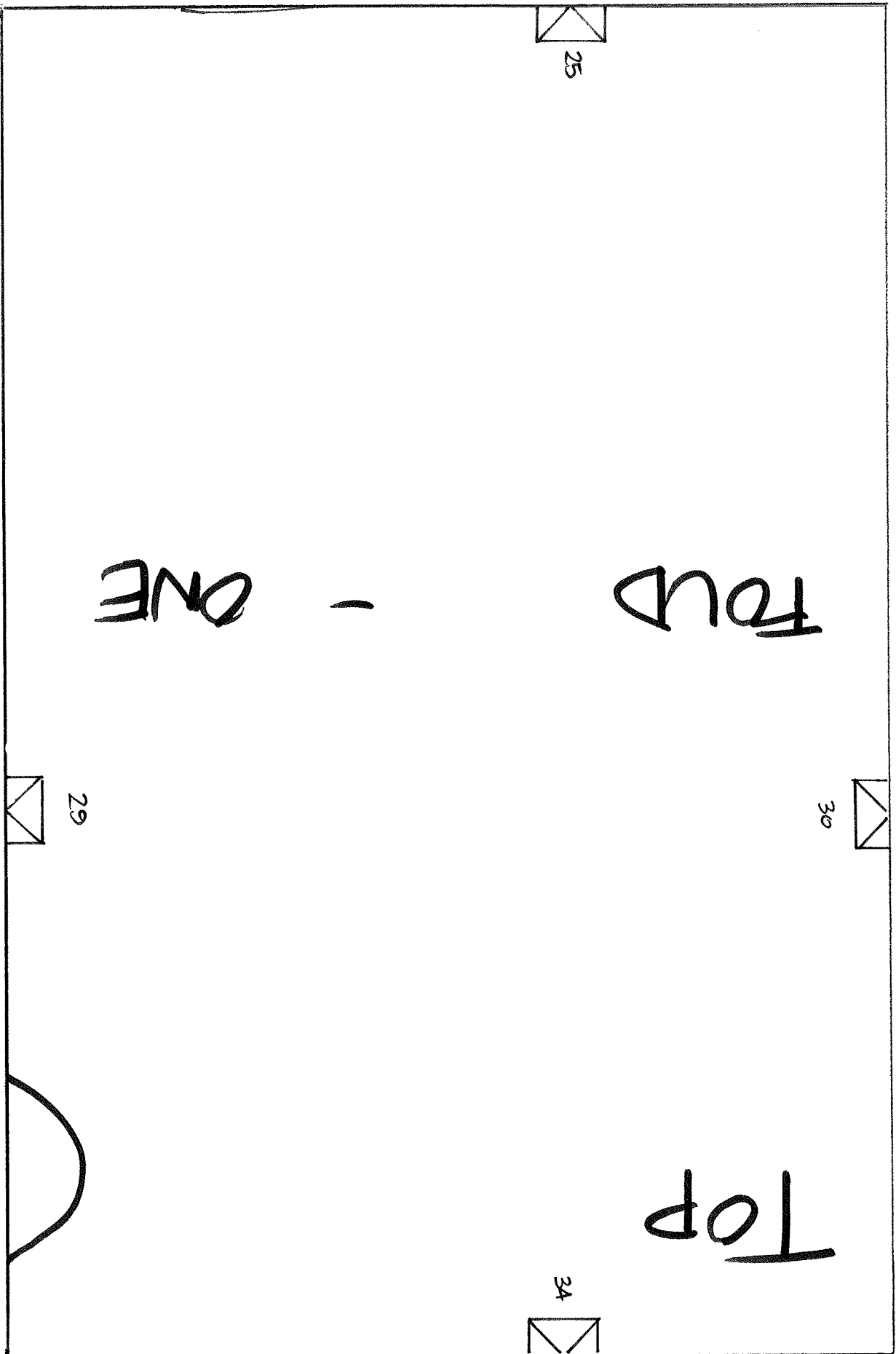
29

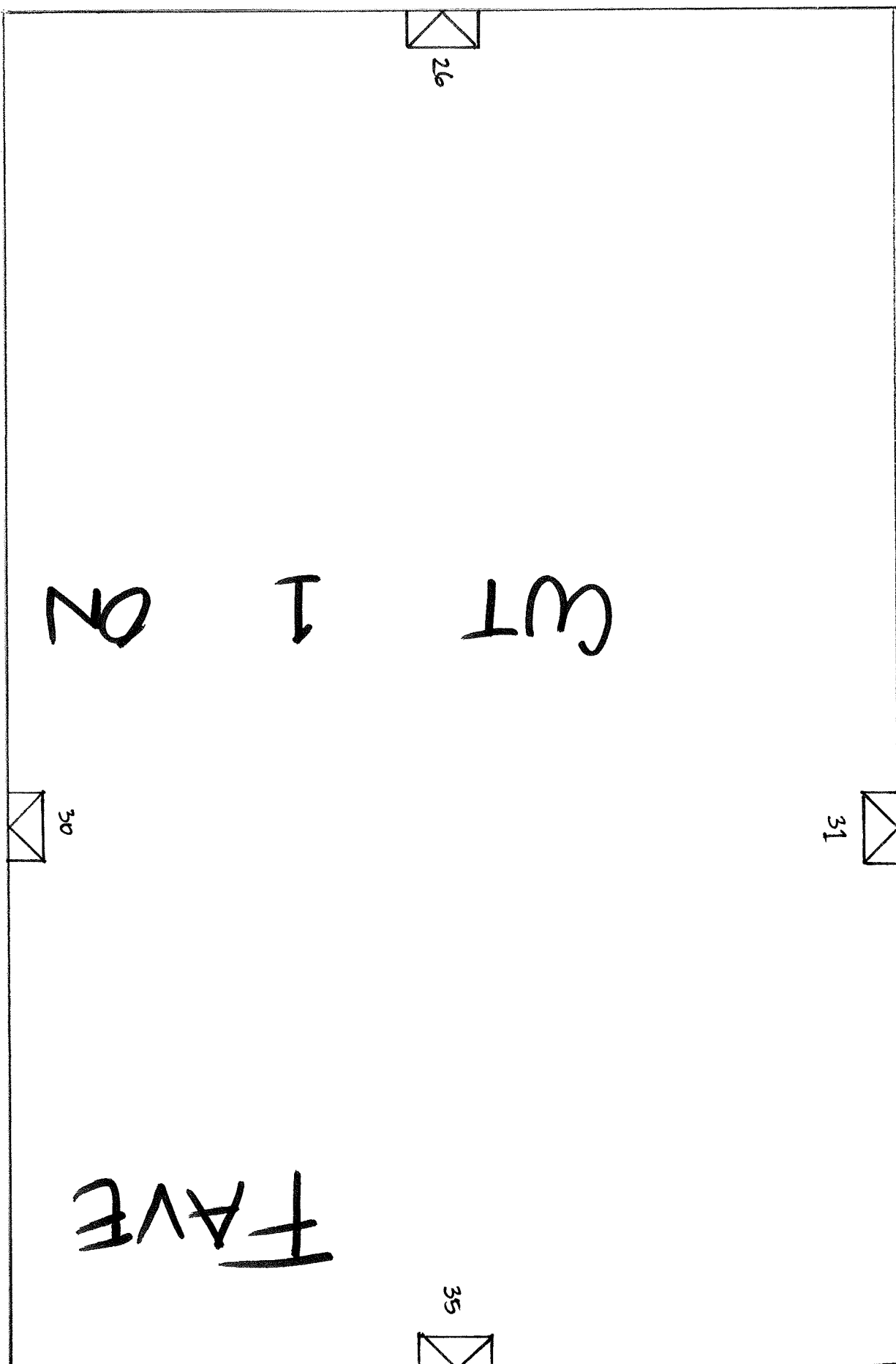


28



33

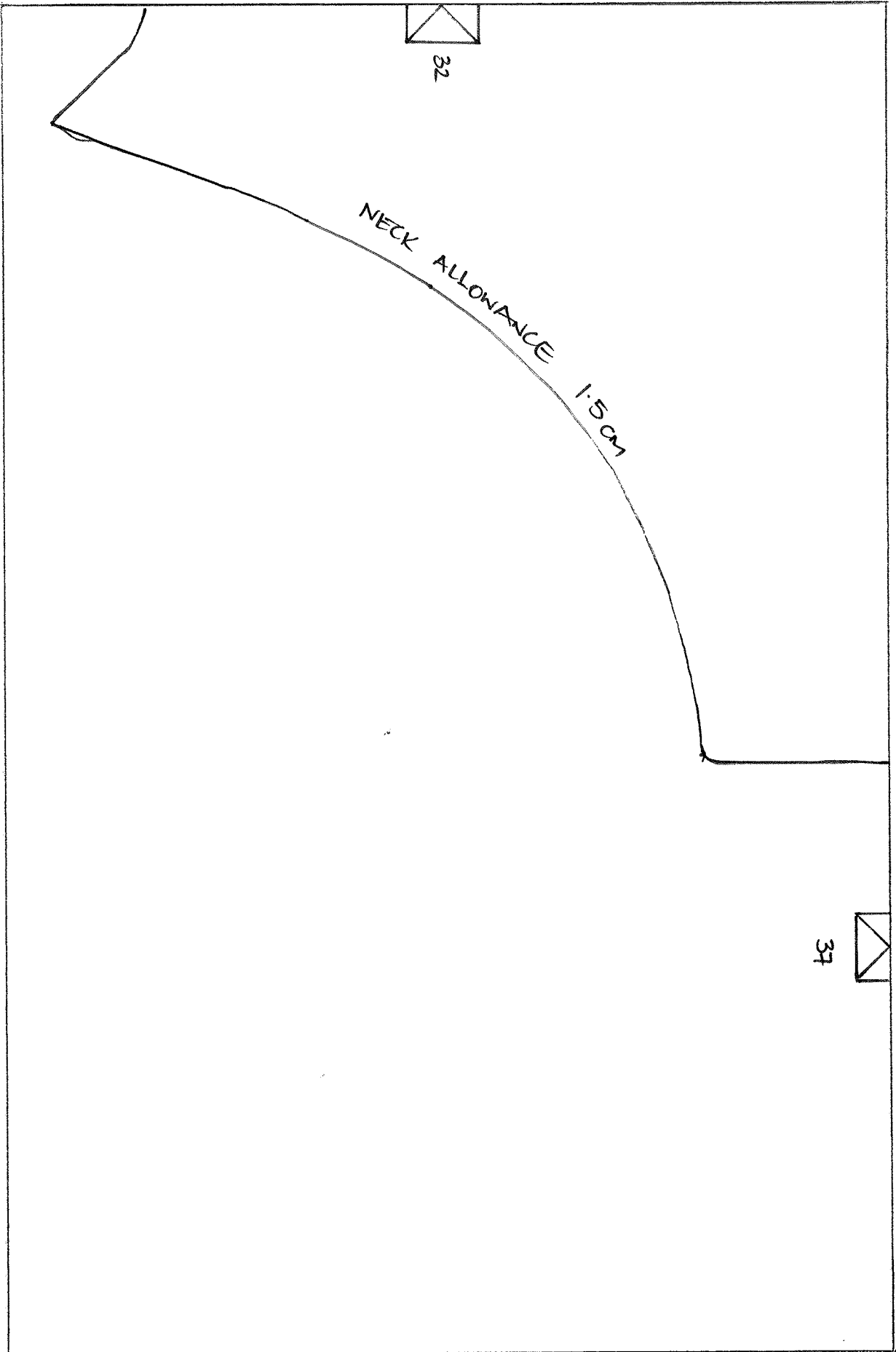


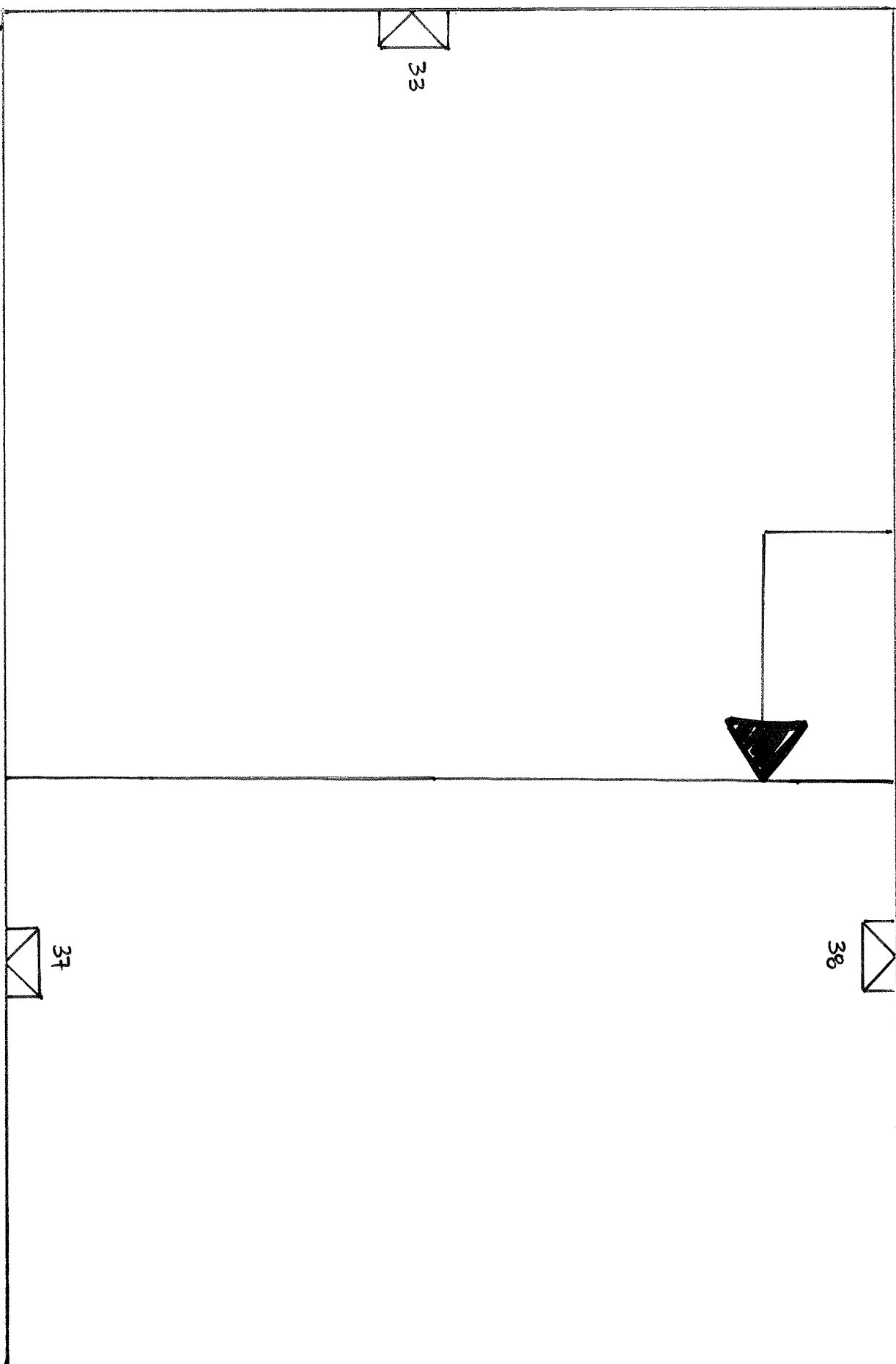




© TESSUTI FABRICS









FRONT TO U



