

HOLLY TOP PATTERN

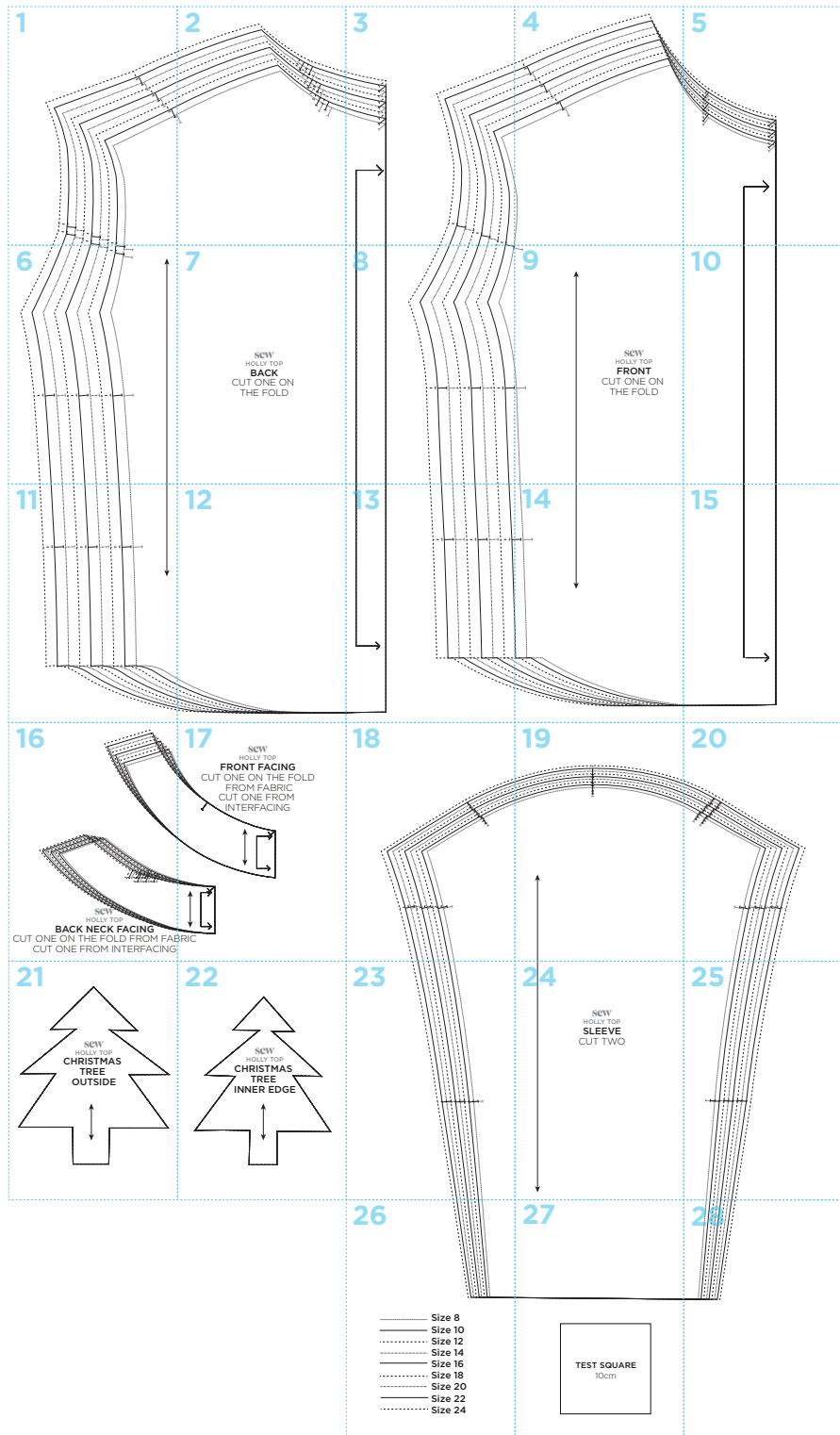
Use these guides to get started today

IN YOUR PRINT MENU, UNDER SIZE OPTIONS, BE SURE TO
SELECT '**ACTUAL SIZE**', INSTEAD OF 'FIT TO PAGE'

Title: Holly Top
Designer: Posner and Posner
Magazine page: 26



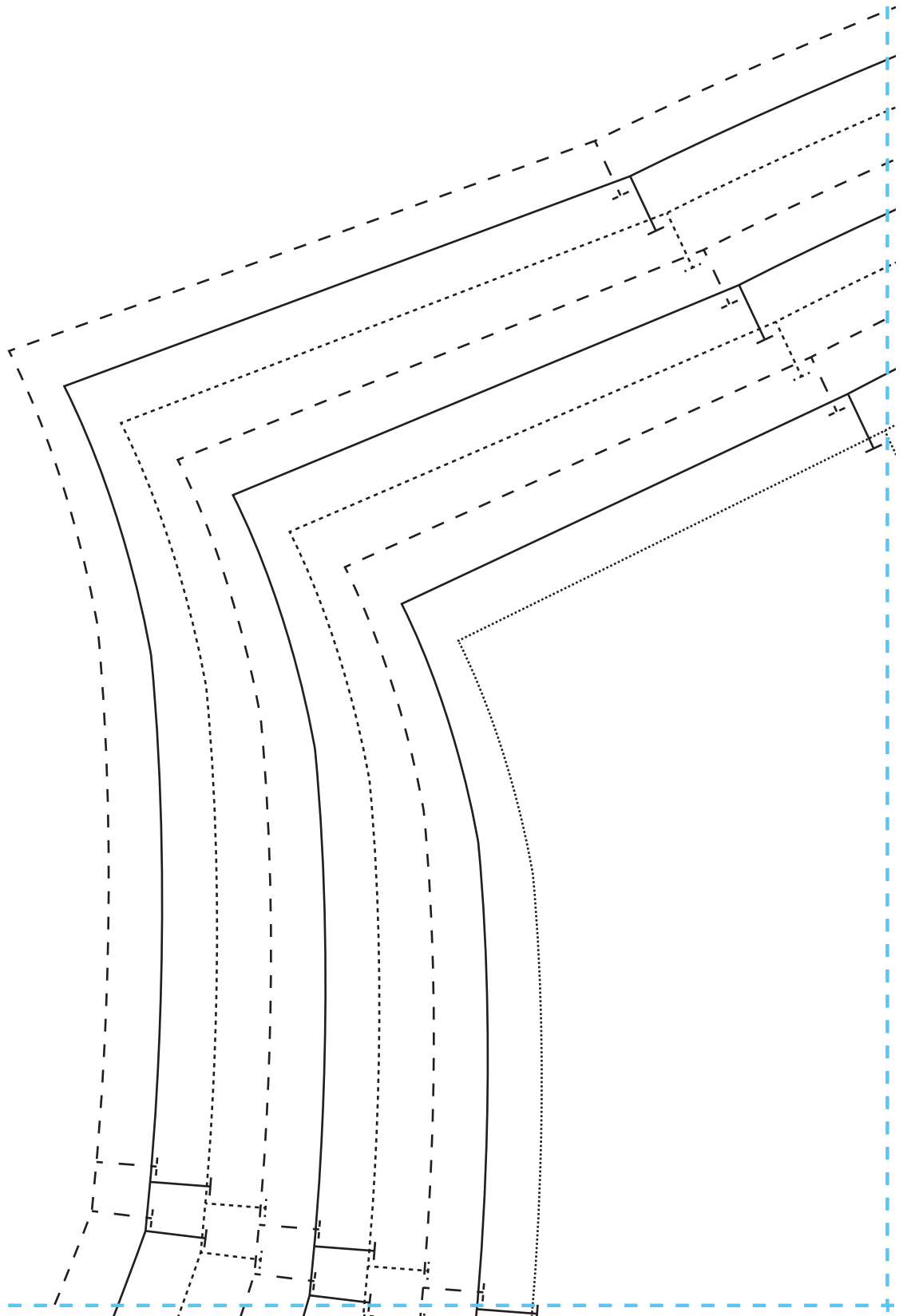
HOLLY TOP PATTERN LAYOUT



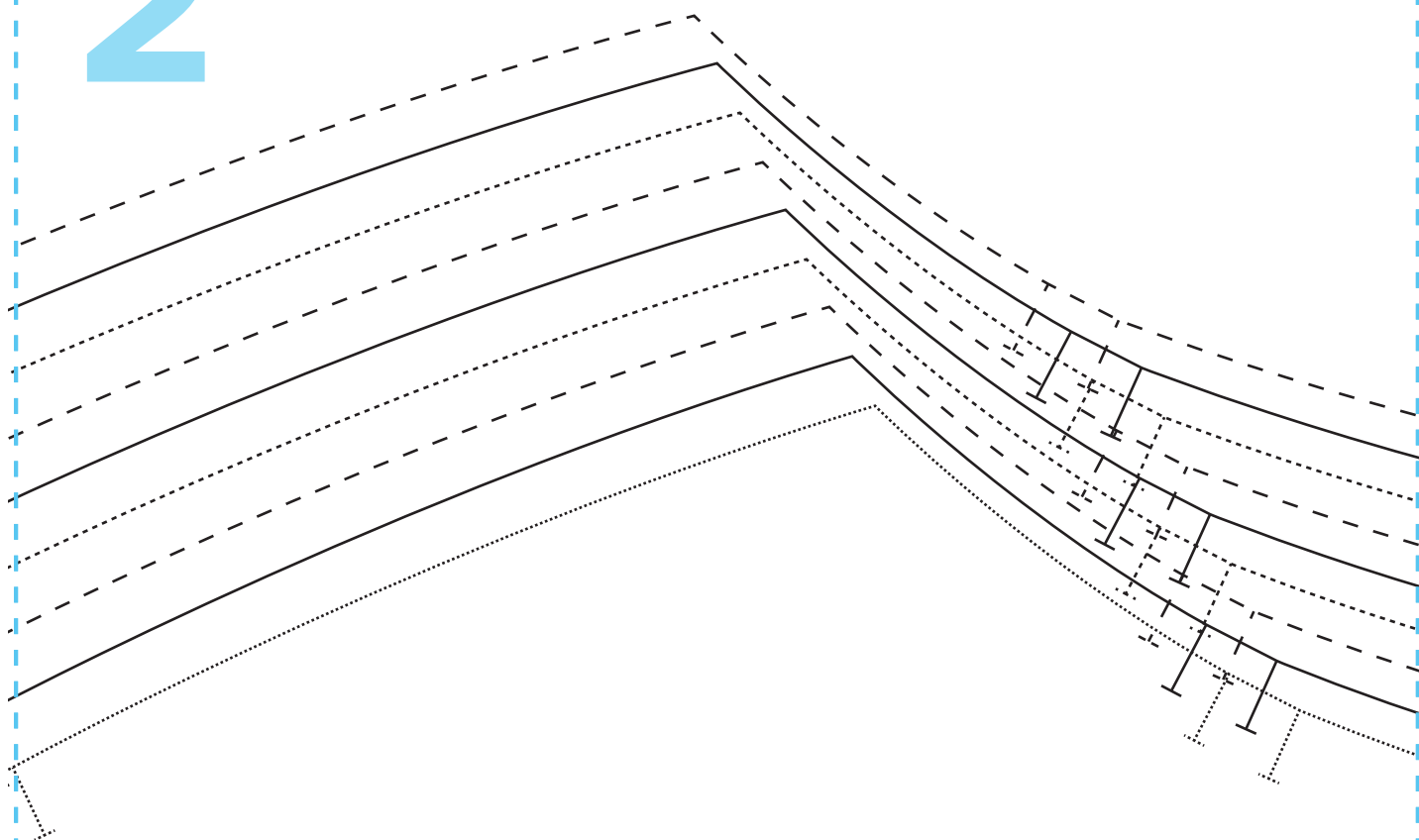
Once you have your body measurements, choose the closest size from the chart below. Remember, there will be variations depending on which fabric and pattern you choose, so always make a toile first.

	8	10	12	14	16	18	20	22	24
Bust	78cm	83cm	88cm	93cm	98cm	103cm	108cm	113cm	118cm
Waist	59cm	64cm	69cm	74cm	79cm	84cm	89cm	94cm	99cm
Hip	85cm	88cm	93cm	98cm	103cm	108cm	113cm	118cm	123cm
Back neck to waist	39cm	40cm	41cm	42cm	43cm	44cm	45cm	46cm	47cm

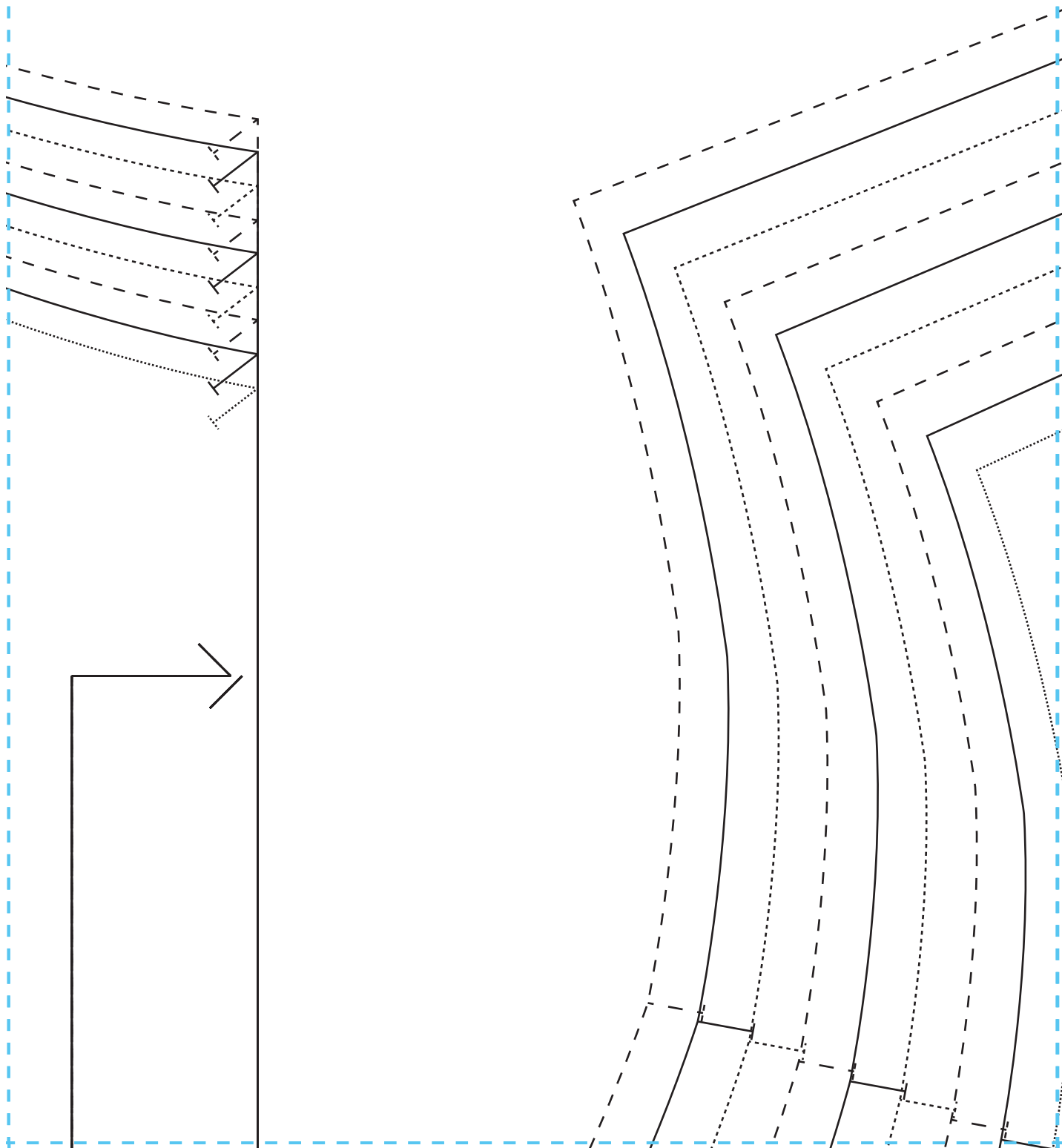
1



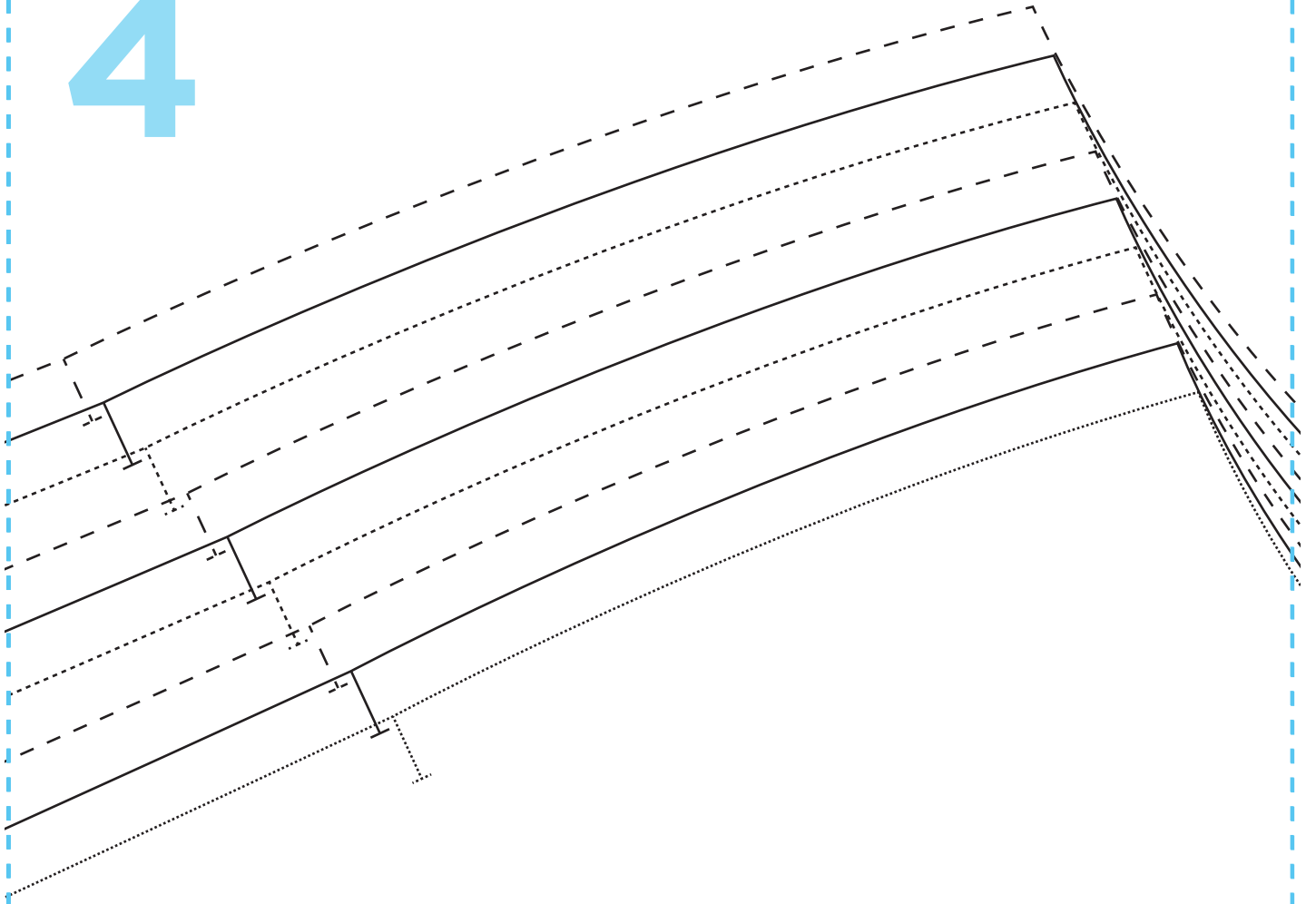
2



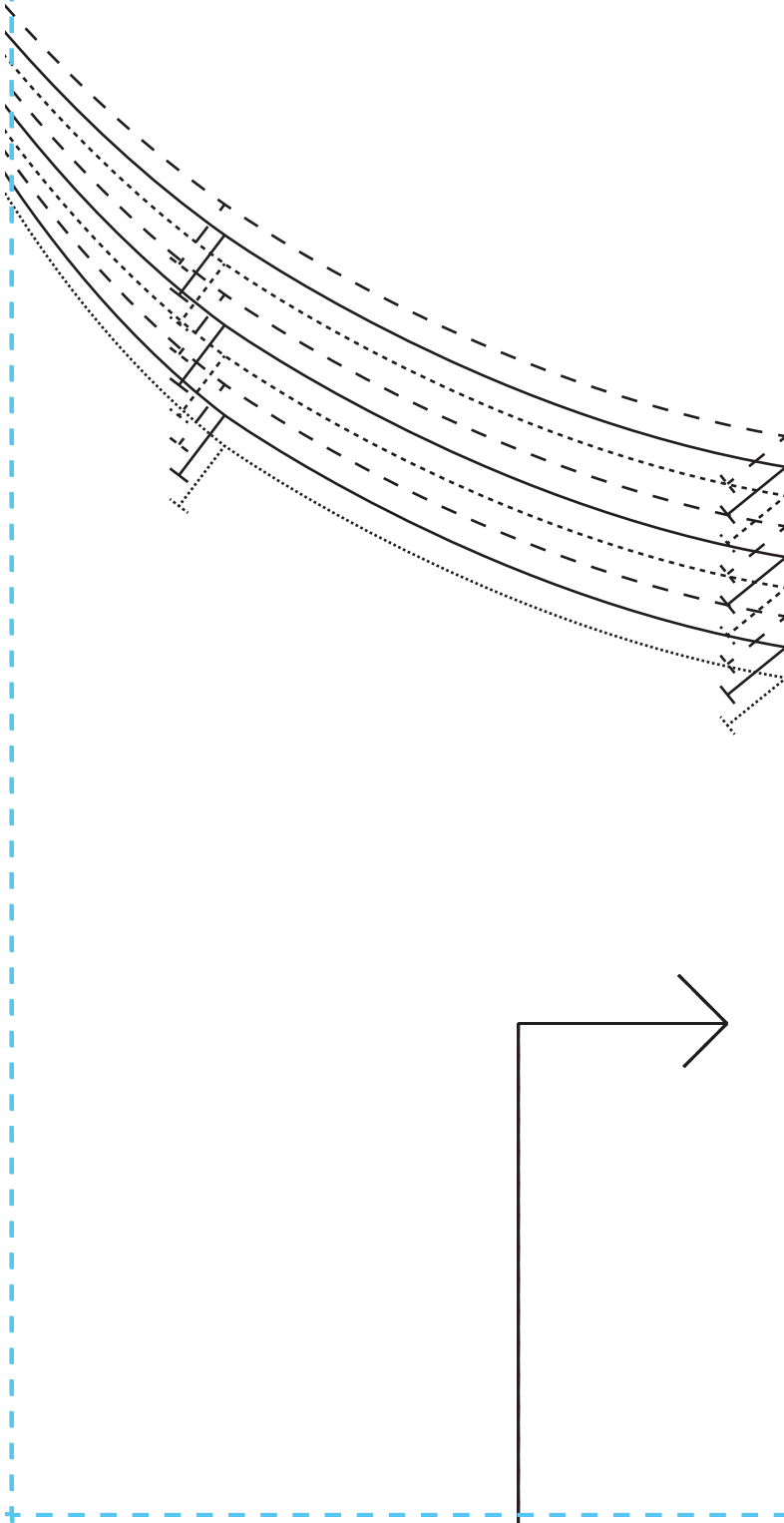
3



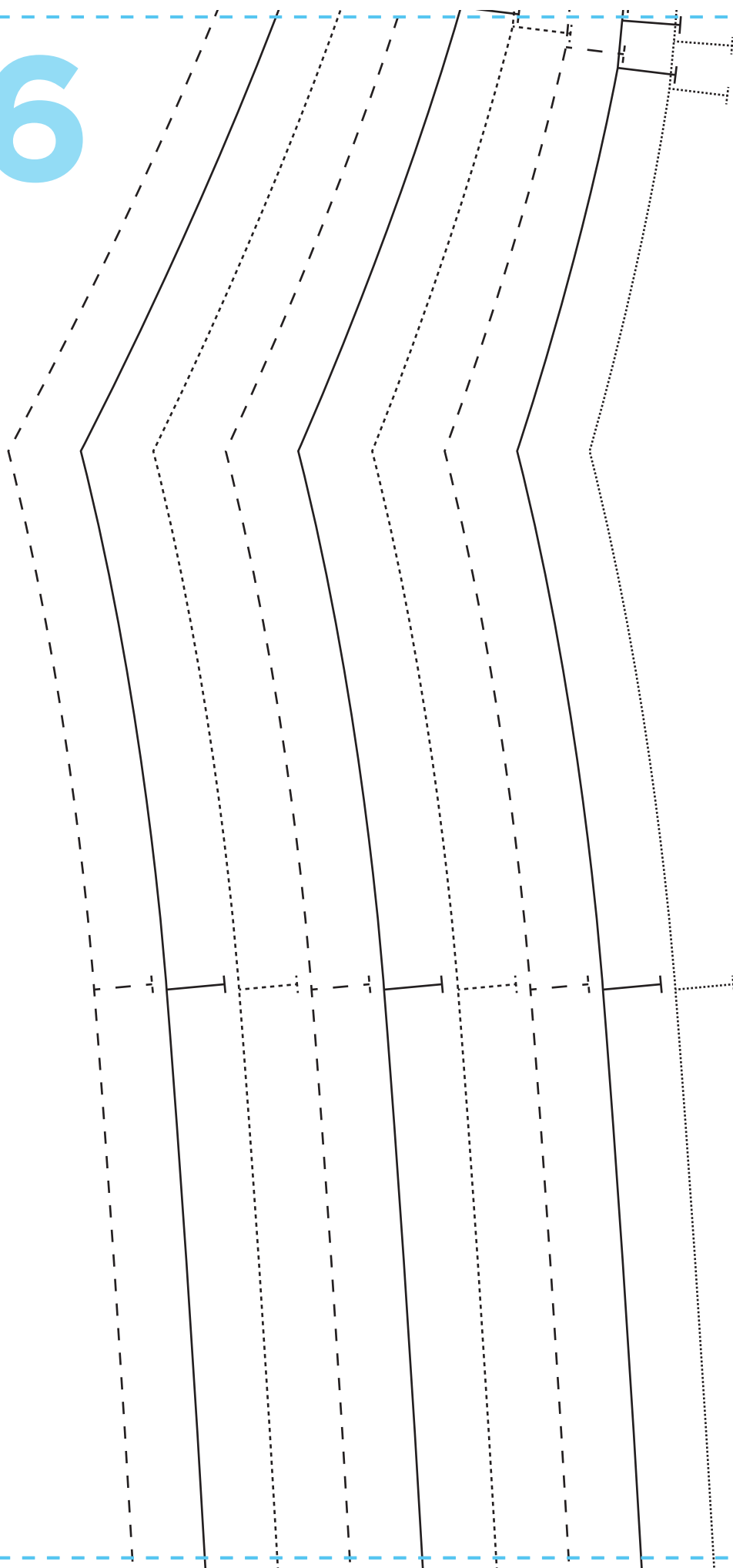
4



5



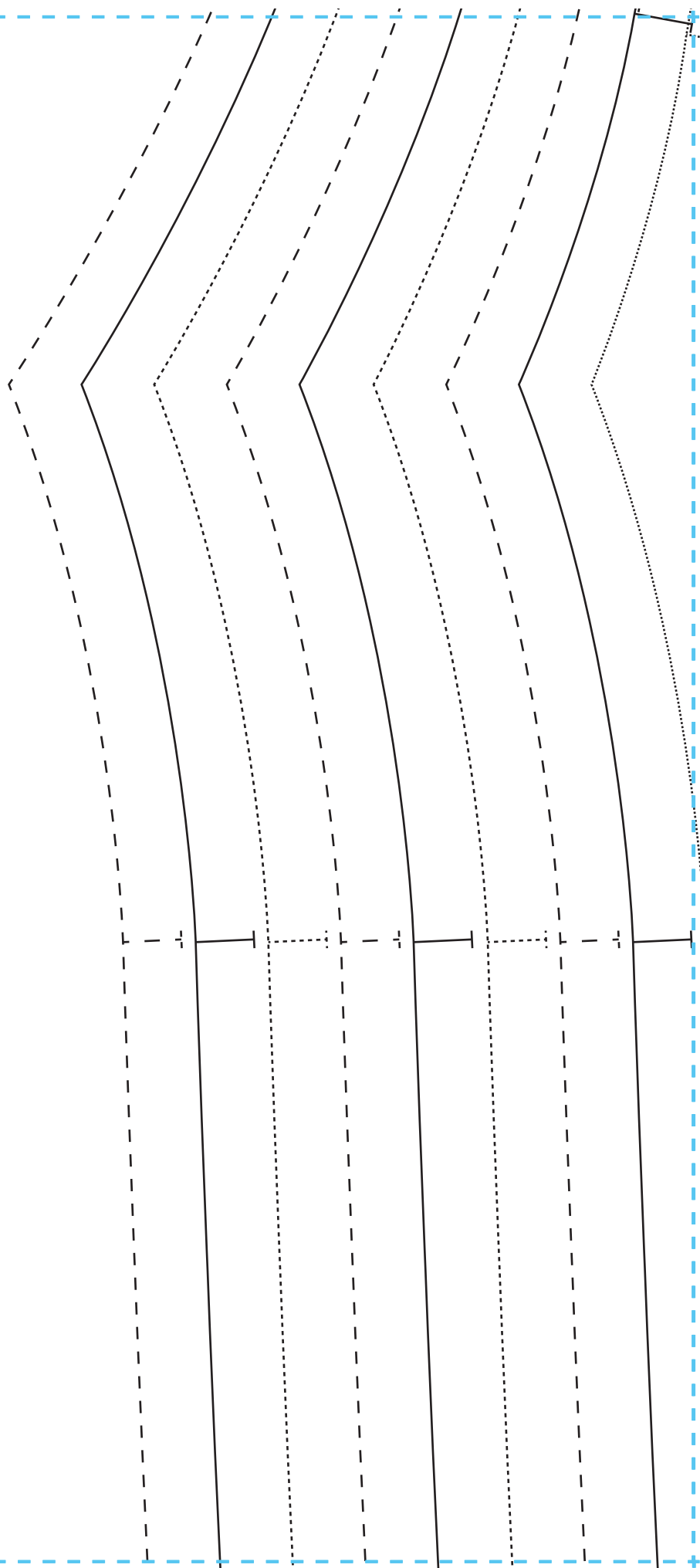
6



7

sew
HOLLY TOP
BACK
CUT ONE ON
THE FOLD

8

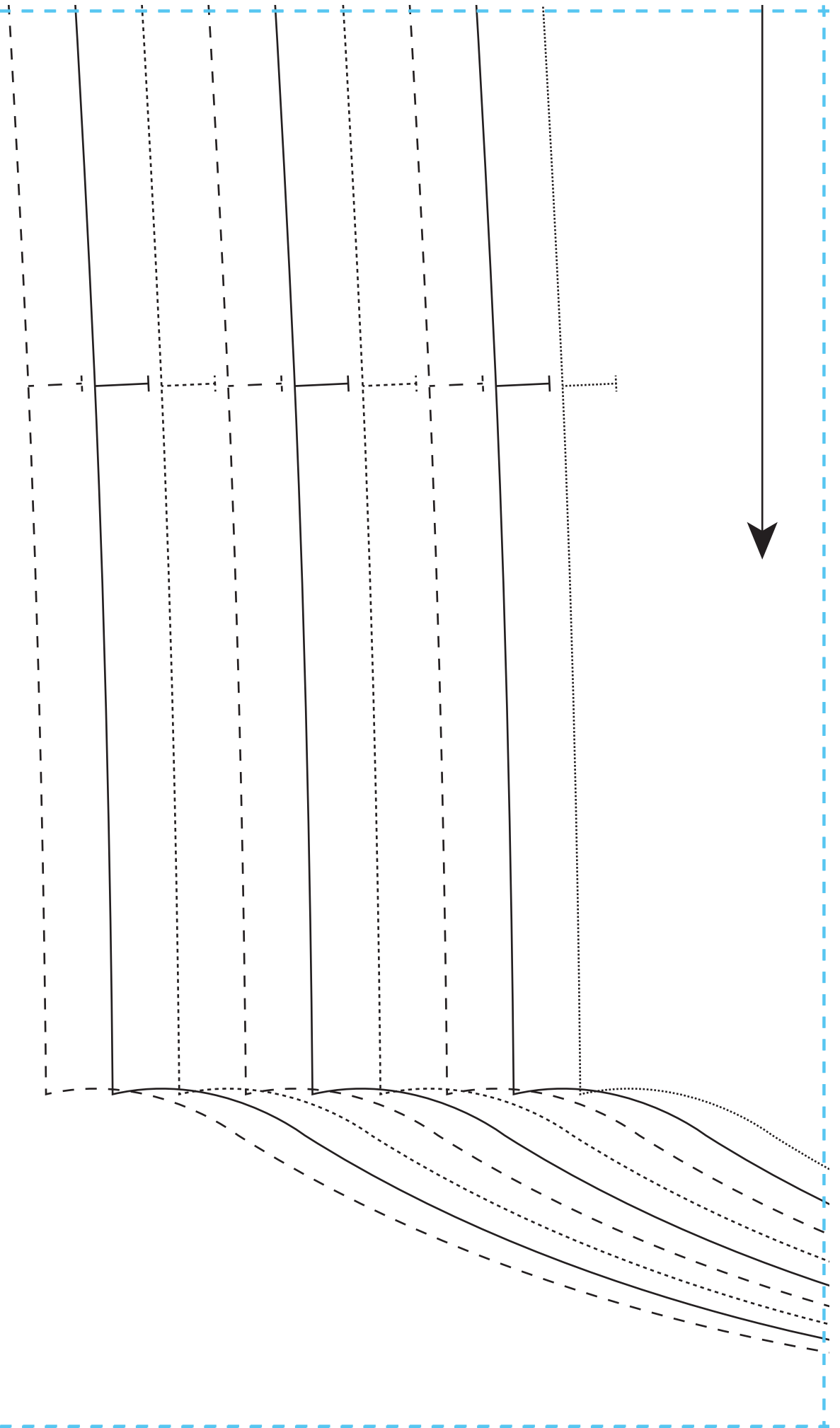


9

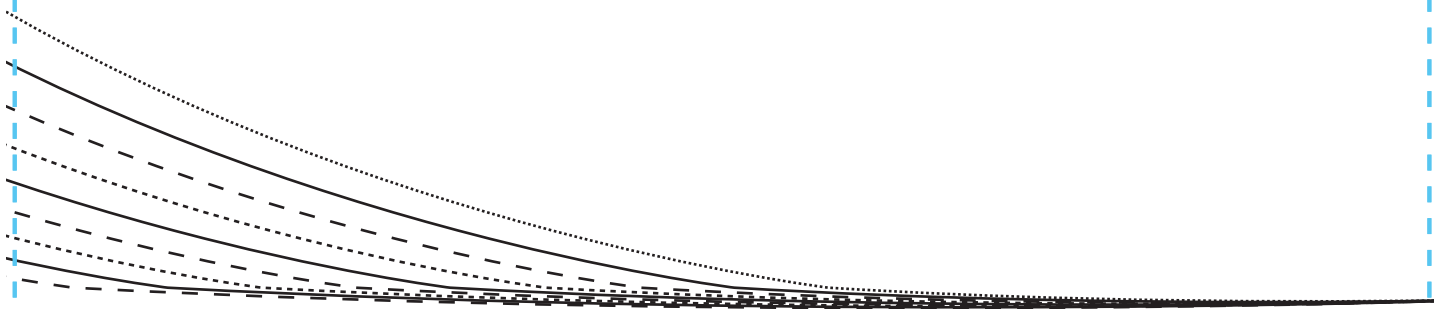
sew
HOLLY TOP
FRONT
CUT ONE ON
THE FOLD

10

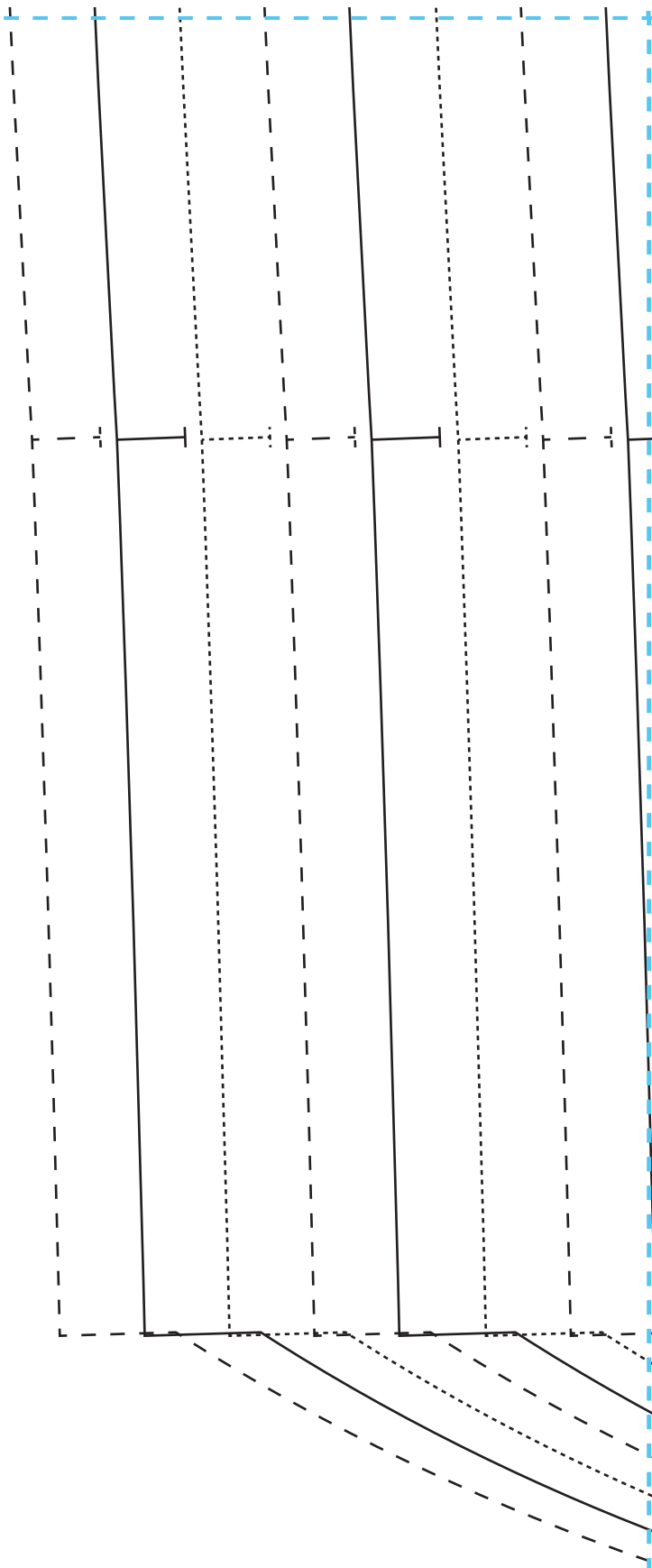
11



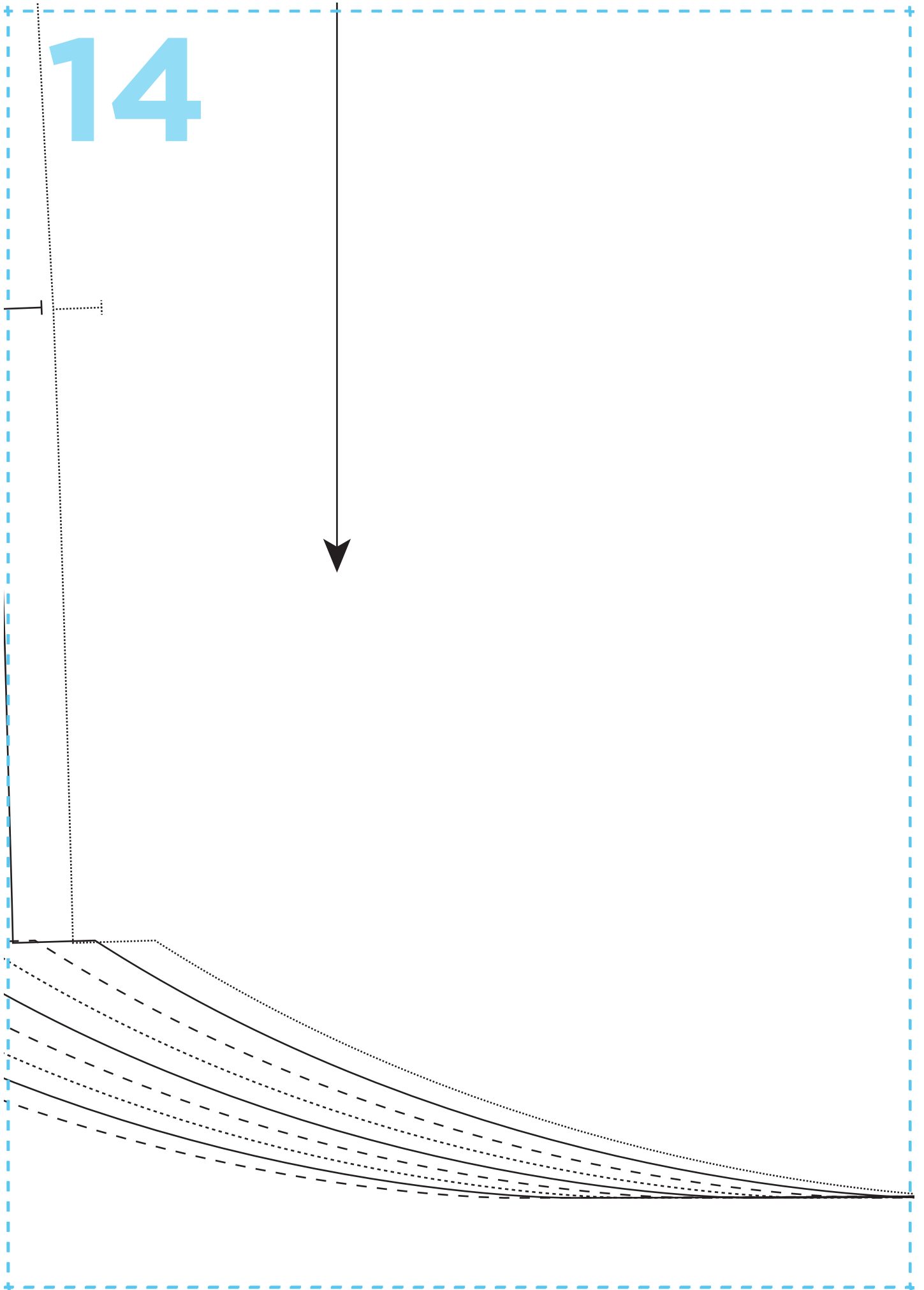
12



13



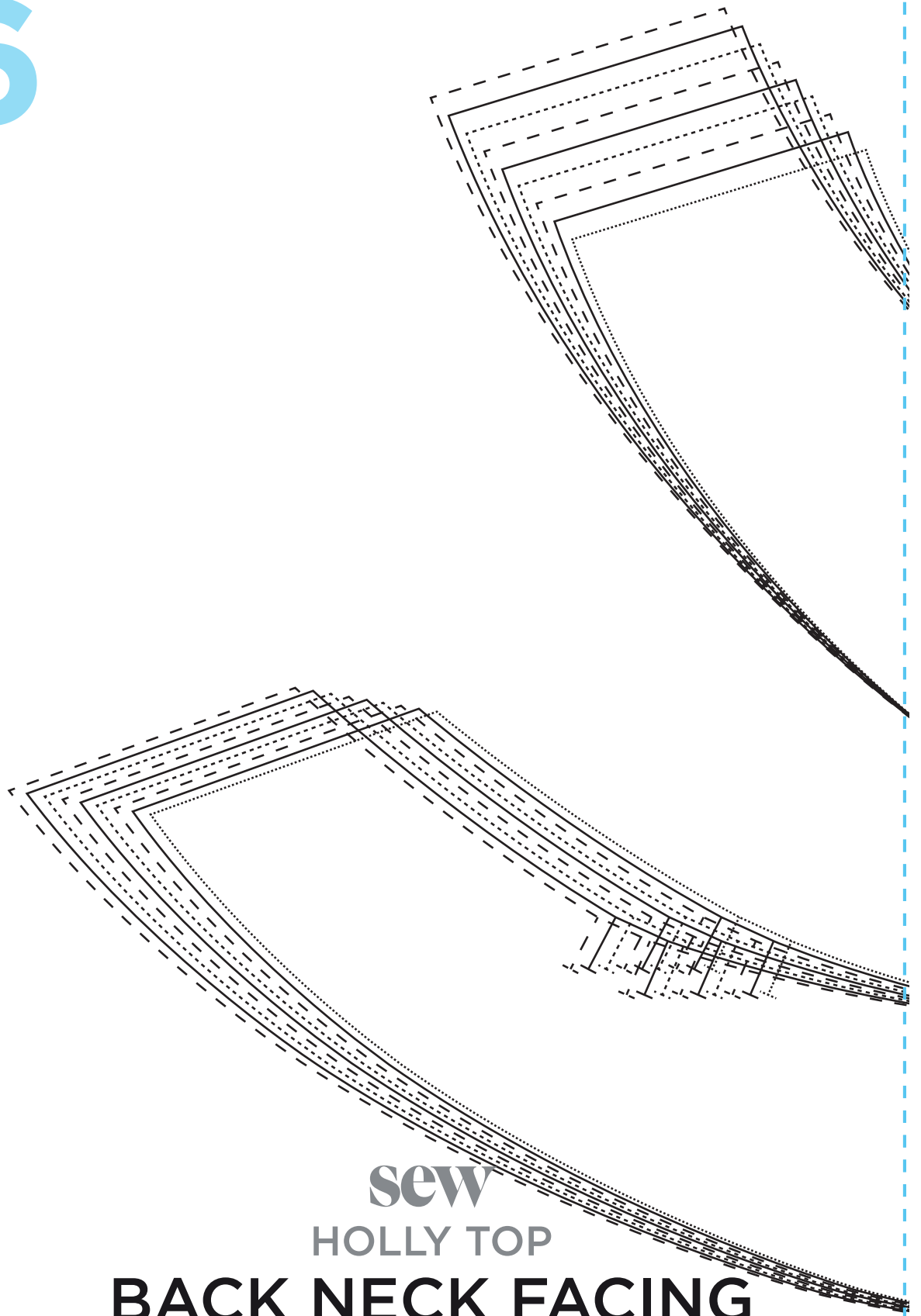
14



15



16



sew
HOLLY TOP

BACK NECK FACING

CUT ONE ON THE FOLD FROM FABRIC
CUT ONE FROM INTERFACING

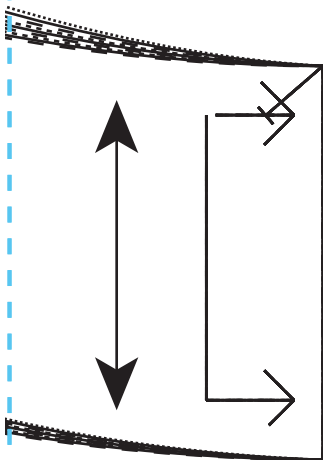
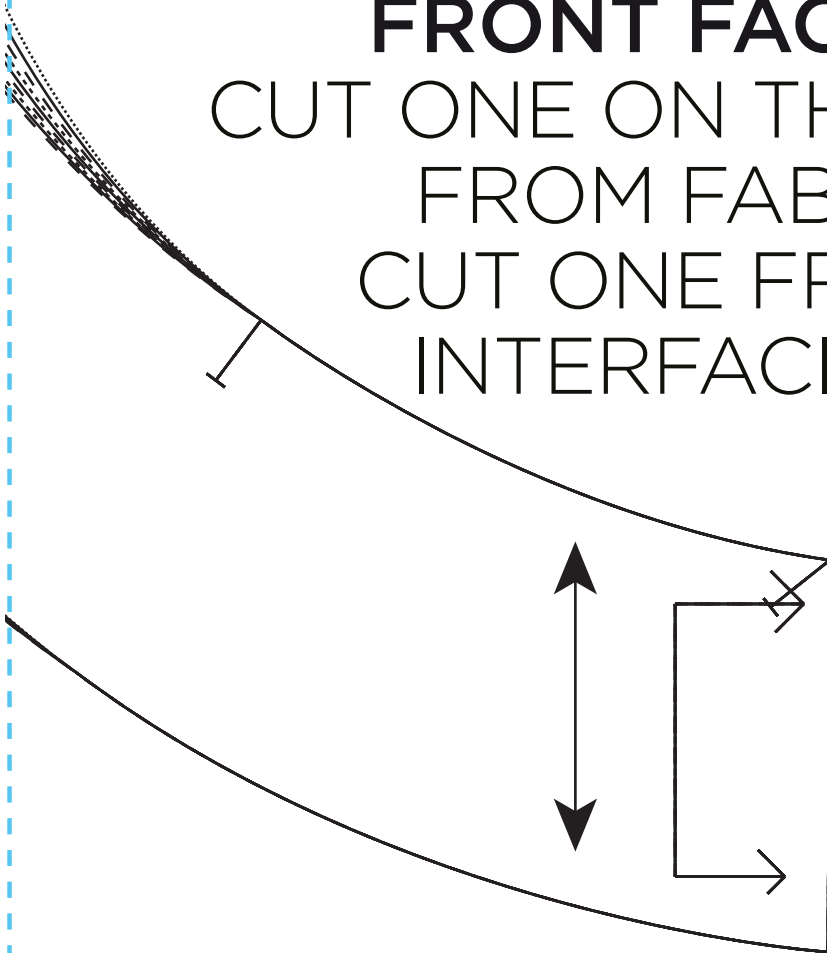
17

sew

HOLLY TOP

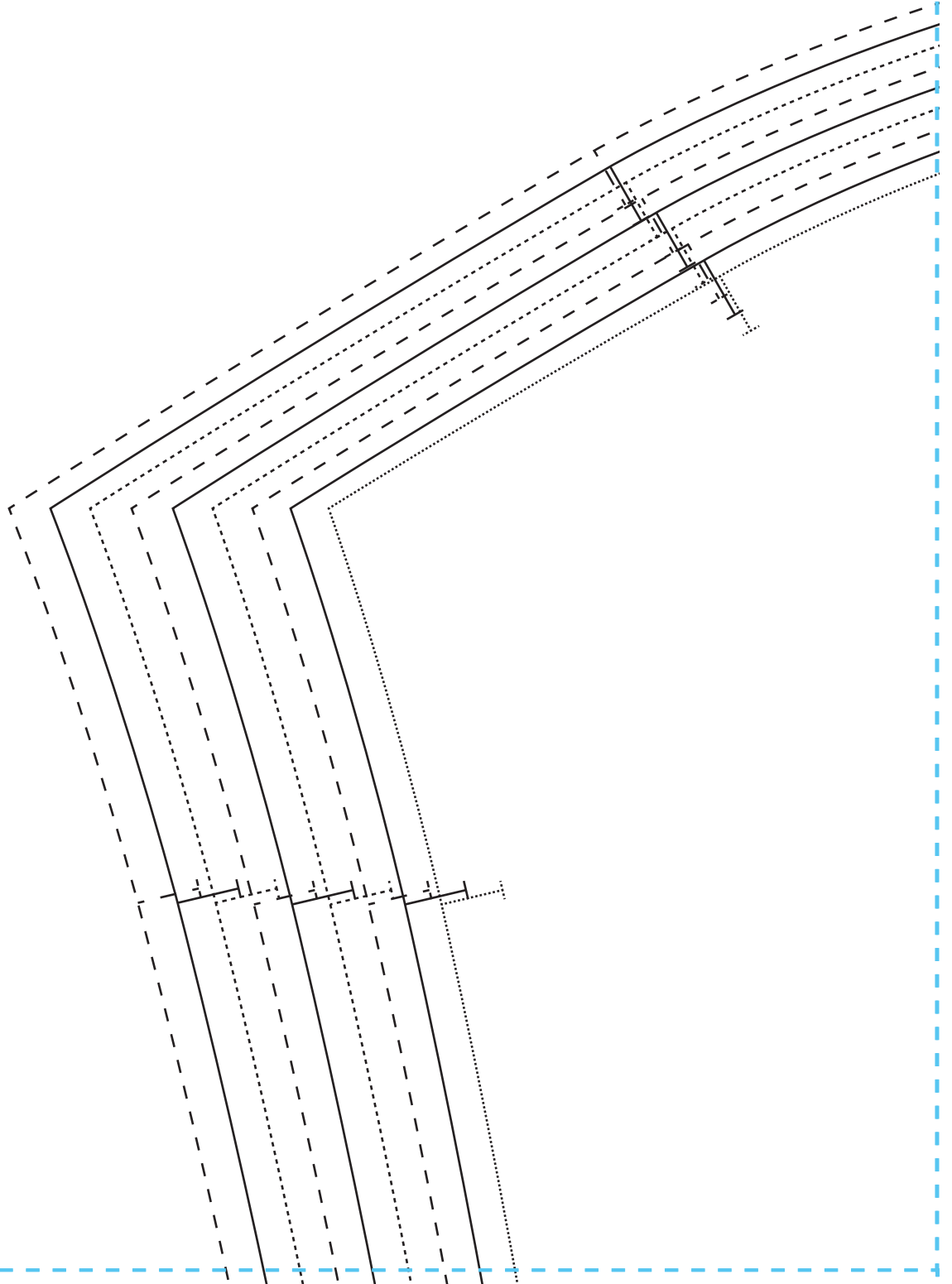
FRONT FACING

CUT ONE ON THE FOLD
FROM FABRIC
CUT ONE FROM
INTERFACING

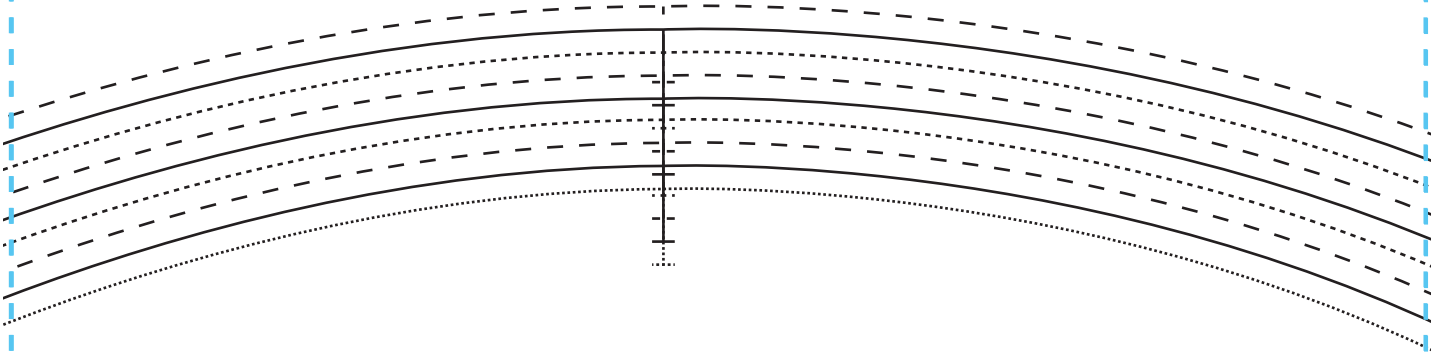


FABRIC

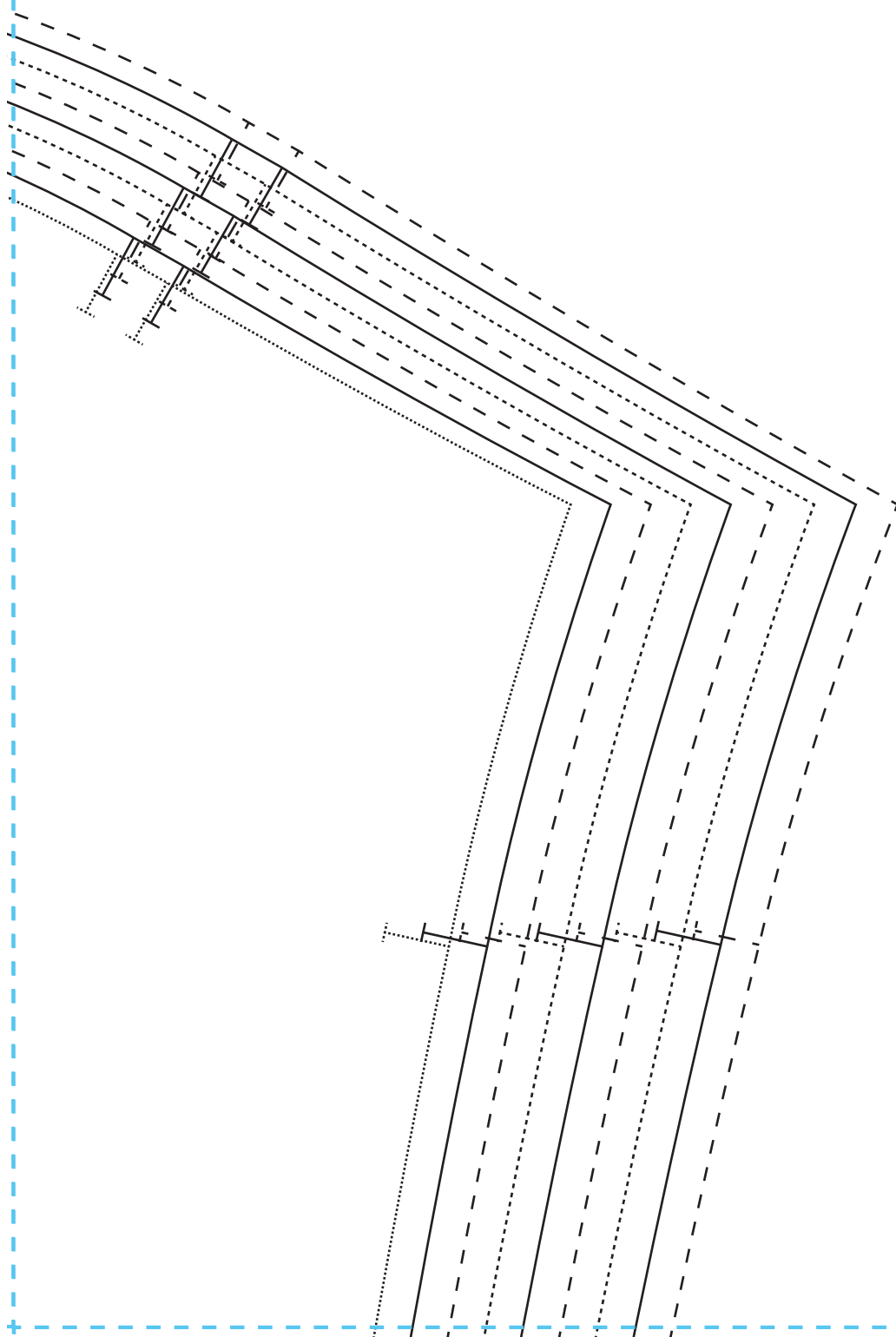
18



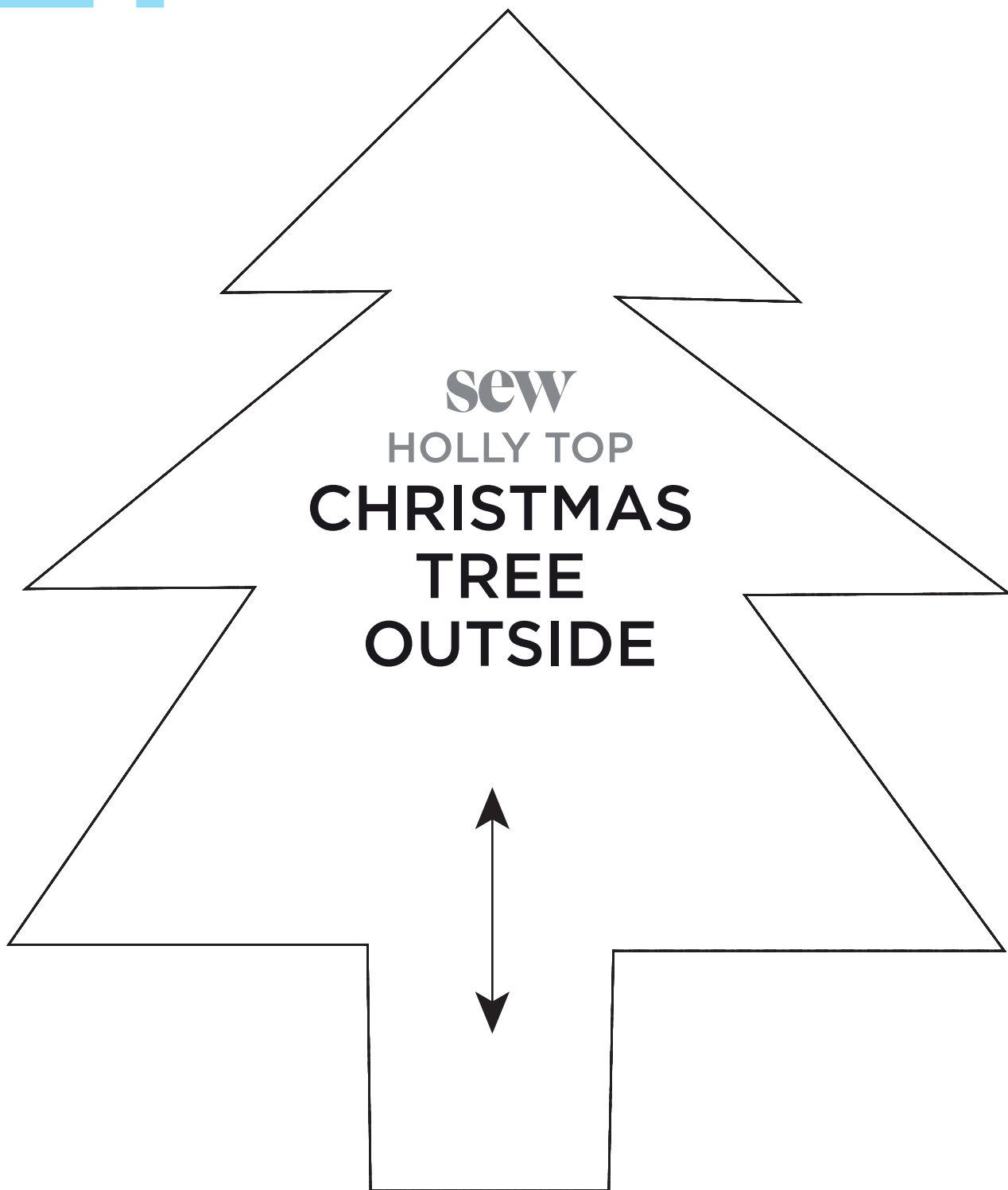
19



20

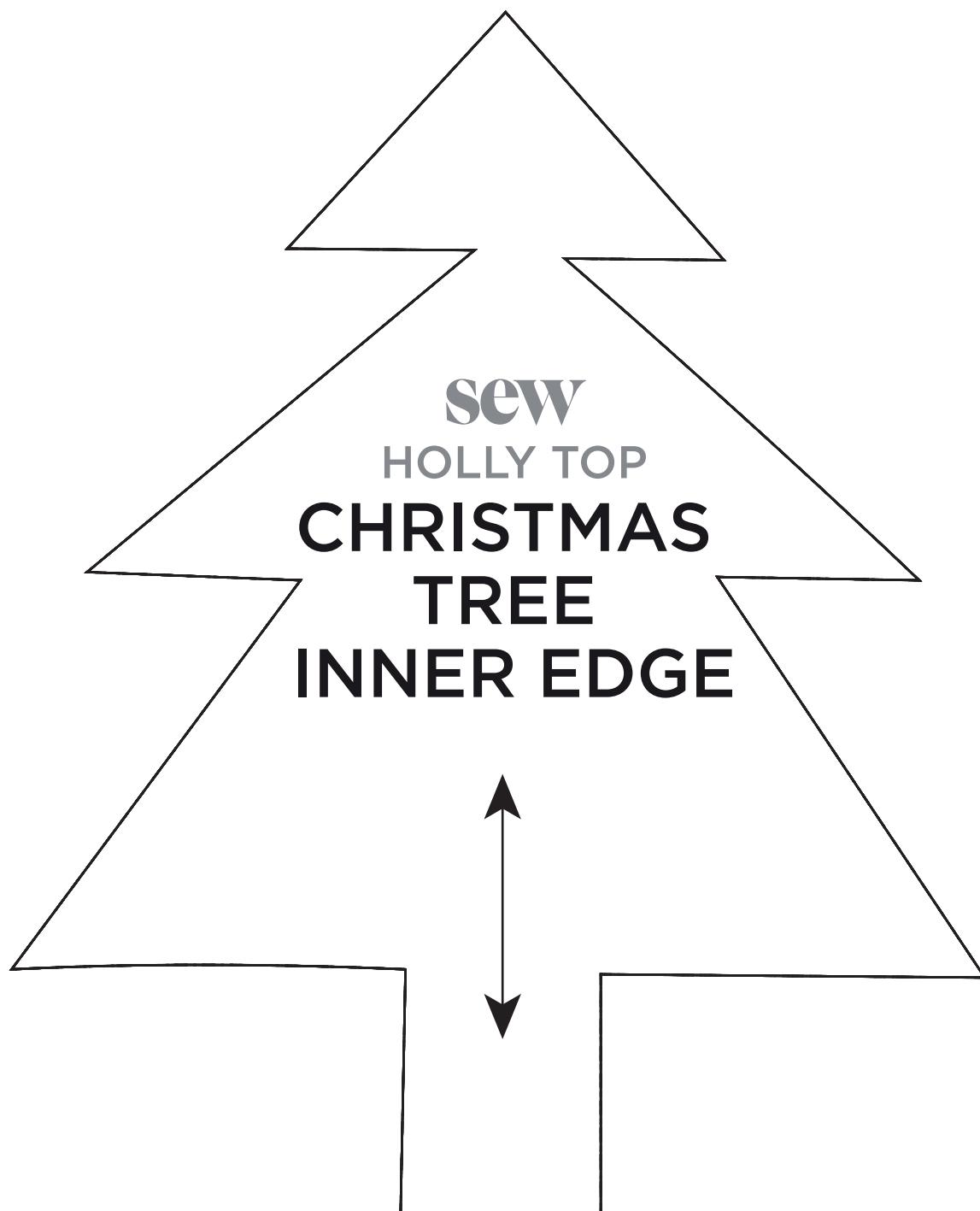


21

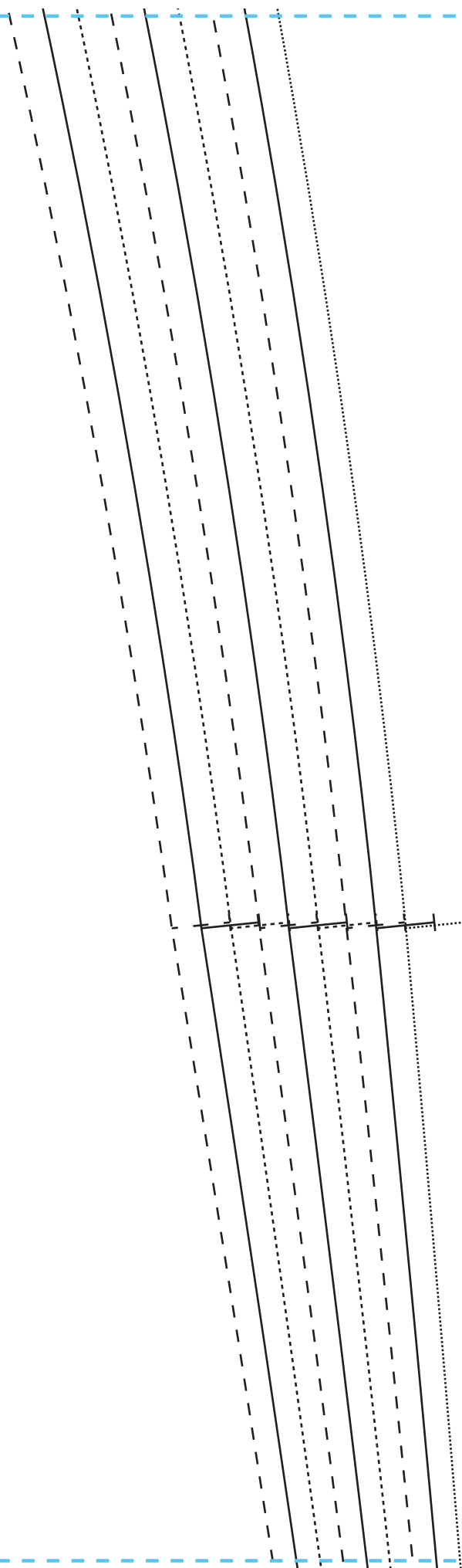


sew
HOLLY TOP
**CHRISTMAS
TREE
OUTSIDE**

22



23

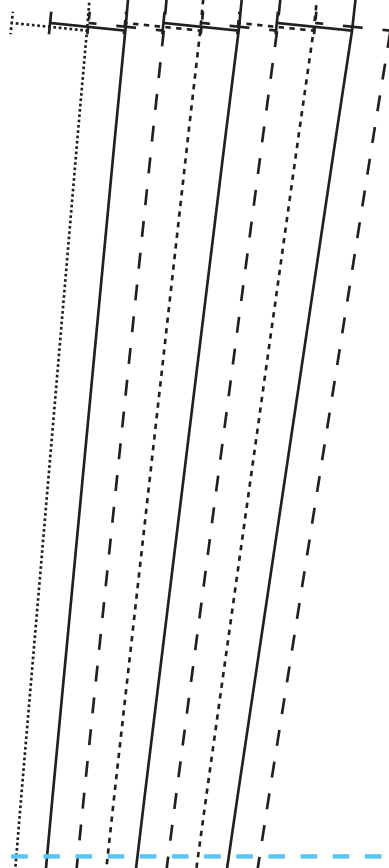


24

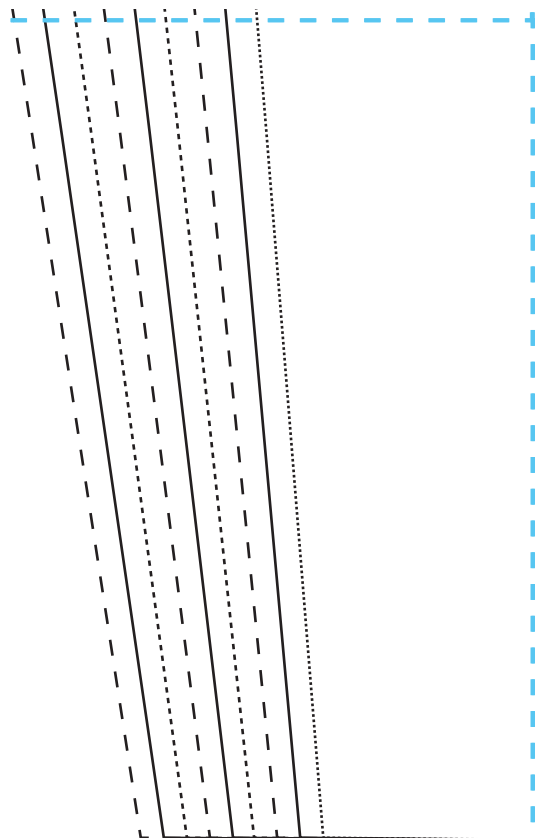


sew
HOLLY TOP
SLEEVE
CUT TWO

25



26



.....	Size 8
————	Size 10
- - - - -	Size 12
.....	Size 14
————	Size 16
- - - - -	Size 18
.....	Size 20
————	Size 22
- - - - -	Size 24

27

TEST SQUARE
10cm

28

