

# LOTTIE

## collarless

# COAT

*This easy-to-sew unlined shell coat has deep pockets and three-quarter length sleeves for a nod to 60s design. Who says you can't look stylish while staying warm?*

Project **FIONA HESFORD** Sewgirl  
Photography **RENATA STONYTE**



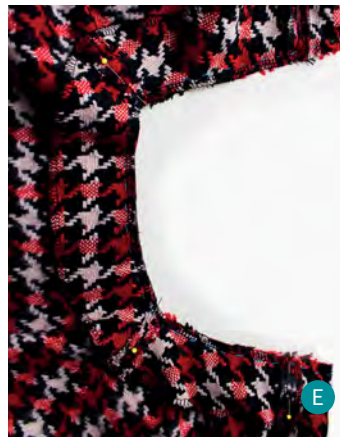
**Fabric shopping:**  
WE USED



Dog Tooth Check Wool  
Blend Fabric in Red Cream,  
£4.99 per metre from  
[www.abakhan.co.uk](http://www.abakhan.co.uk)

Perfect layering piece

# LOTTIE COLLARLESS COAT



Skill level ♥♥

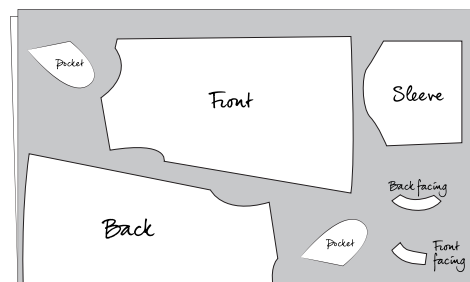
## MATERIALS:

- ♥ 1.8m (small & medium) or 2m (large) 145cm-wide woven wool (boucle, tweed, coating) or similar medium-weight woven fabric
- ♥ 25mm button
- ♥ templates downloaded from [www.lovesewingmag.co.uk](http://www.lovesewingmag.co.uk)

## CUTTING:

150cm-wide fabric, no nap

### SELVEDGES



FOLD

Cut 1 back facing on a single layer of fabric.

## Notes

✓ Sew 1cm seam allowance unless otherwise specified

✓ A glossary of sewing terms can be found on page 89

## SIZING:

UK SIZE	8-10 (S)	12-14 (M)	16-18 (L)
BUST	82-86cm	91-96cm	100-106cm
WAIST	65-69cm	74-79cm	84-89cm
HIPS	90-94cm	99-104cm	109-114cm

## FINISHED MEASUREMENTS:

	S	M	L
Coat finished length (from shoulder to hem)	100cm	102cm	104cm
Finished chest	102cm	112cm	122cm

## How to make: POCKETS

1 Finish the raw curved outer edges of the pockets. With RST align the straight pocket edges with the front and back side seams following the pattern markings. Sew in place using a 1cm seam allowance. Finish the raw edges along each long side of front and back from under arm to lower edge. Press pocket away from body and top-stitch on RS approximately 4mm from edge on pocket side. (See Pic A.)

## Top tip!

Stay stitching involves sewing a line of straight stitches around curves to prevent them stretching out during handling

**ASSEMBLE THE BODY**

2 With RST sew the front to the back at the shoulder seam. Finish the raw edges and press towards the back. Top-stitch at 4mm. Stay-stitch the back neckline curve 5mm from the raw edge then finish the raw edge of back neck. (See Pic B.)

3 Pin then sew the front to back at the side seams, sewing around the open pockets. Press seam open. (See Pic C.)

4 Finish raw edges of lower edge then make a single fold 4cm hem.

**FACINGS**

5 With RST pin then sew together the facings at the shoulder seams. Finish the raw outer edge. With RST and matching the curves pin then sew the short ends of the facing to the front corners. (You will be sewing down the front edge of the coat.) The facing will be too small to sit flat but don't worry about that yet. Press the seams open. (See Pic D.)

6 Match the facing and body shoulder seams and pin together. To form the 'self facing' along the centre fronts, fold over each front edge by 5cm RST. Pin in place with the neckline edges aligned. Tack-stitch to secure then sew around the neckline. Clip the corners and turn through to the RS using a point turner or chopstick to push out corners at the CF. Press. (See Pic E.)

7 From the WS, top-stitch the facings in place close to the edge for a decorative feature on the RS of the coat.

**SLEEVES**

8 Finish the raw edges of the sleeves and armholes. With RST pin the sleeve along the side seam and sew together. Press then sew a single fold 3cm hem at the cuff edge

9 Sew a row of gathering stitches between the notches of the sleeve head 1cm from the edge.

10 Pin into armhole with RST, matching cross seams and notches. Pull the threads to ease in the sleeve head. Sew with a 1cm seam allowance and press the seam allowance towards the body. You can now remove your gathering stitch.

11 Sew a buttonhole at top of the right-hand side. Sew the button in the corresponding position on the left.

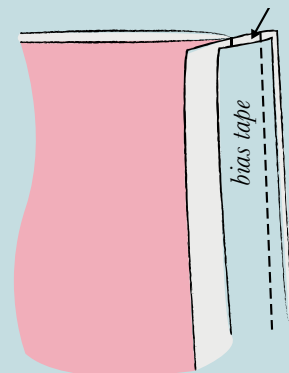


**TUTORIAL**  
*Hong Kong finish*

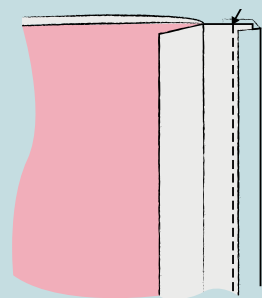
Woven wool (as opposed to knit) can be prone to fraying so its best to use an overlocker to finish any raw edges after cutting out your pieces or use a zigzag stitch on your sewing machine. If you have the time and want to achieve a high end durable finish, we recommend a Hong Kong seam.

You will need enough lightweight bias tape to wrap every seam on both sides of the seam allowance for this to be achieved and will need to remember to do this after every stage of construction for the exposed seams so it can be quite time consuming.

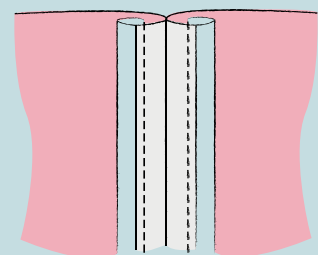
You will sew your bias binding to the WS of the seam allowance first.



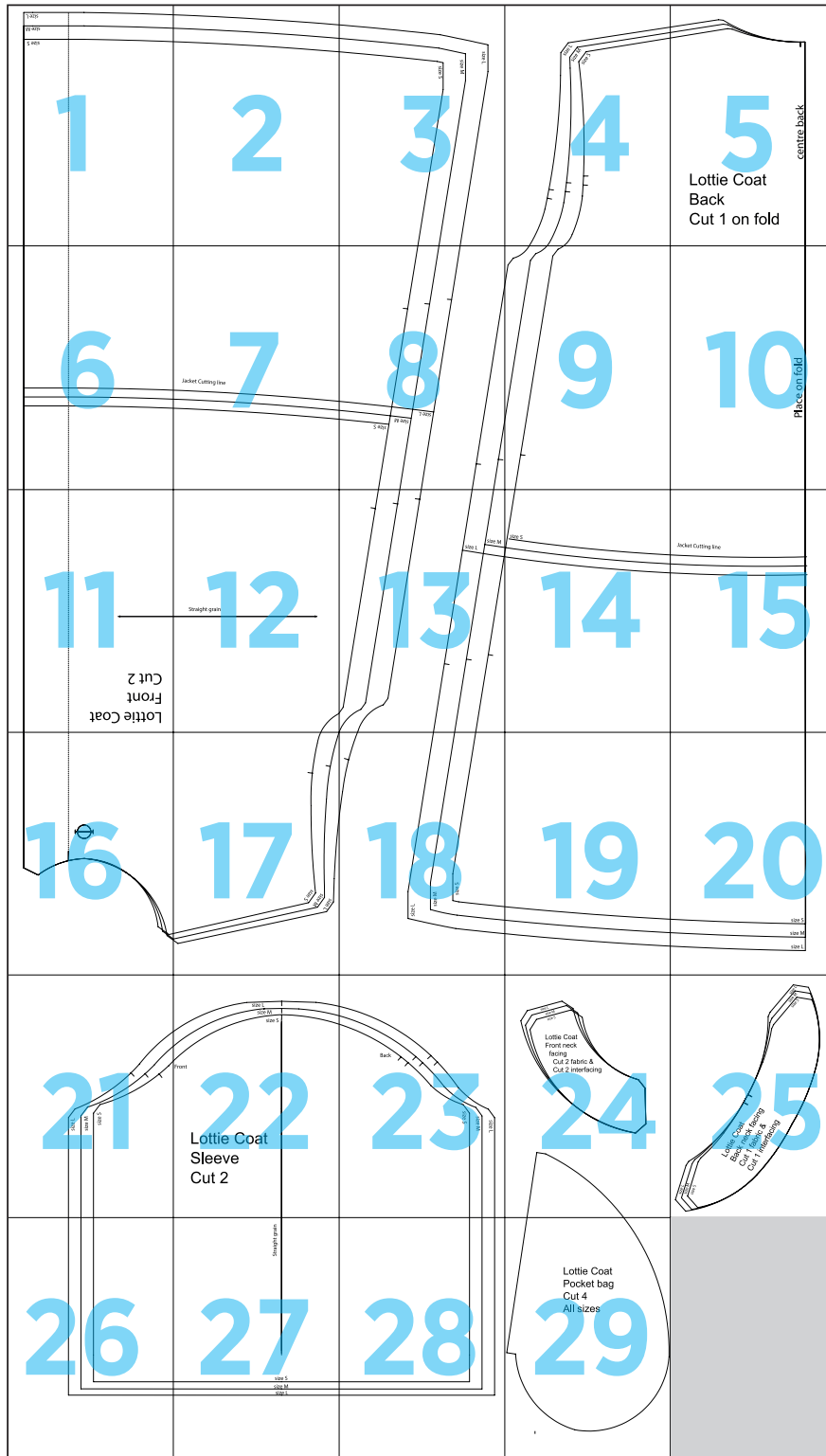
Fold around the exposed edge and pin in place.



On the side you started with, stitch in the ditch (along the groove of the seam line), catching the bias binding in your stitching line.



# Lottie Coat



1

size L

size M

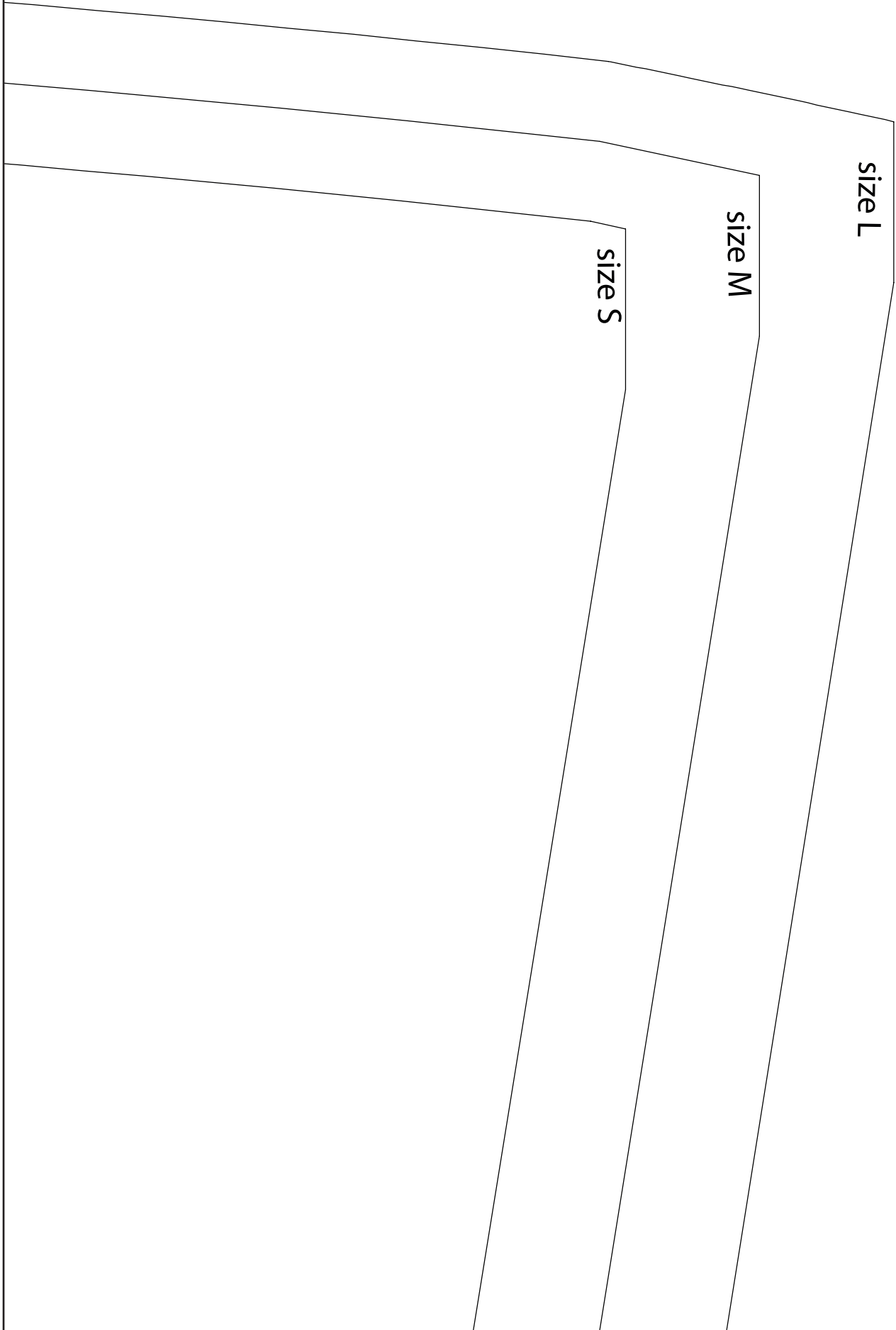
size S



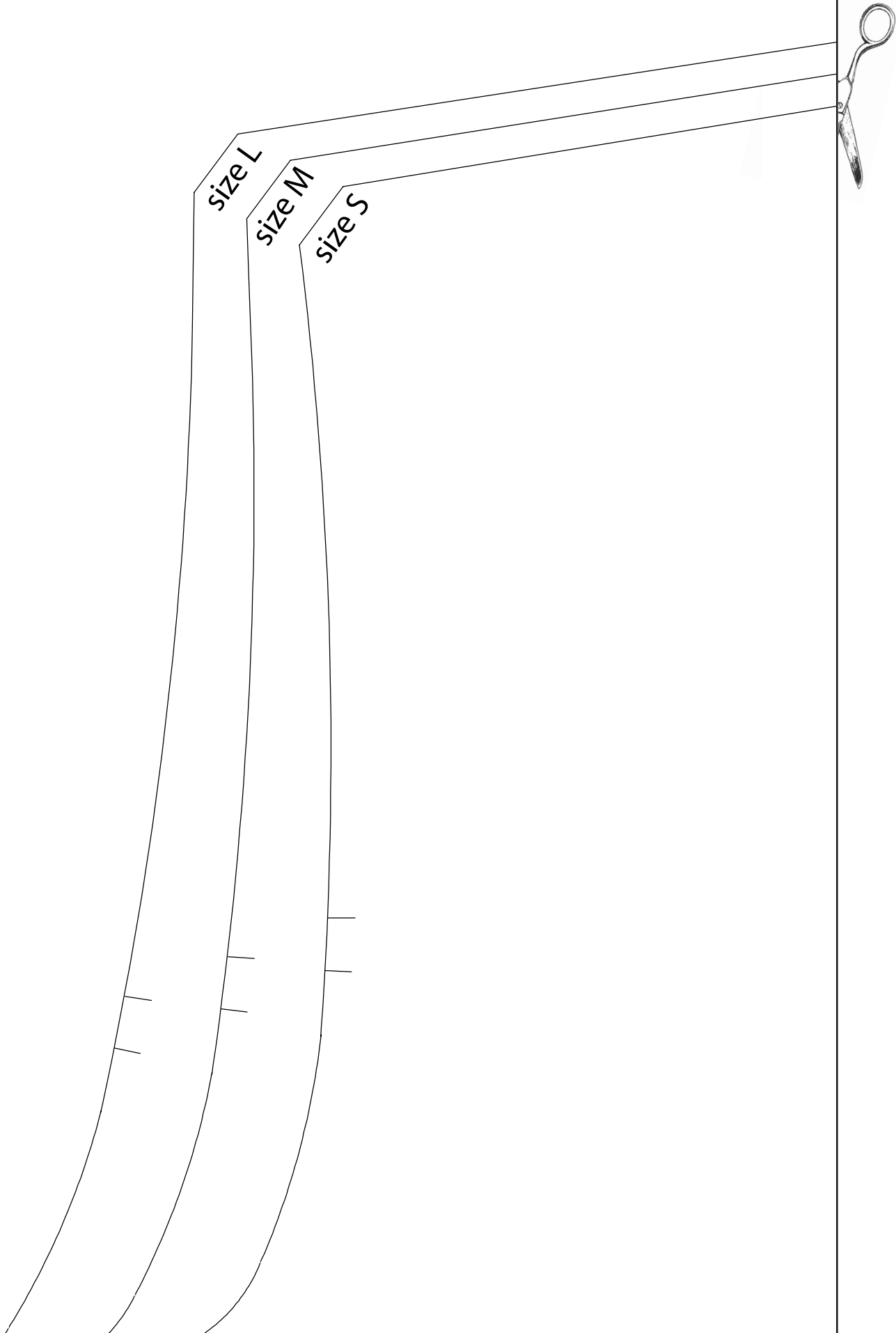
2



3

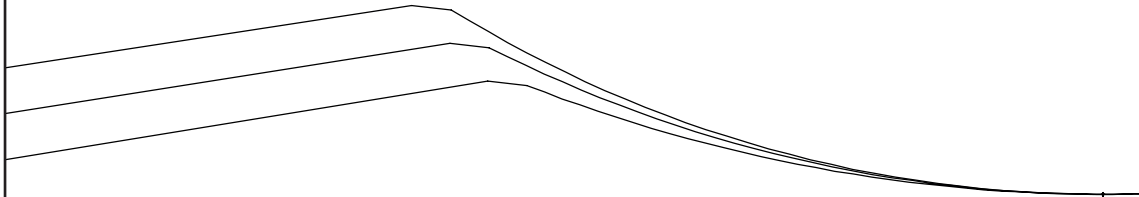


4





5



centre back

**Lottie Coat  
Back  
Cut 1 on fold**

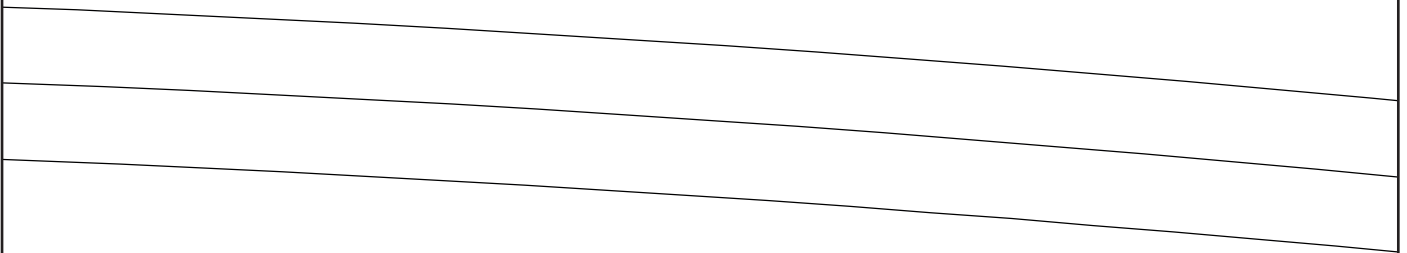
6



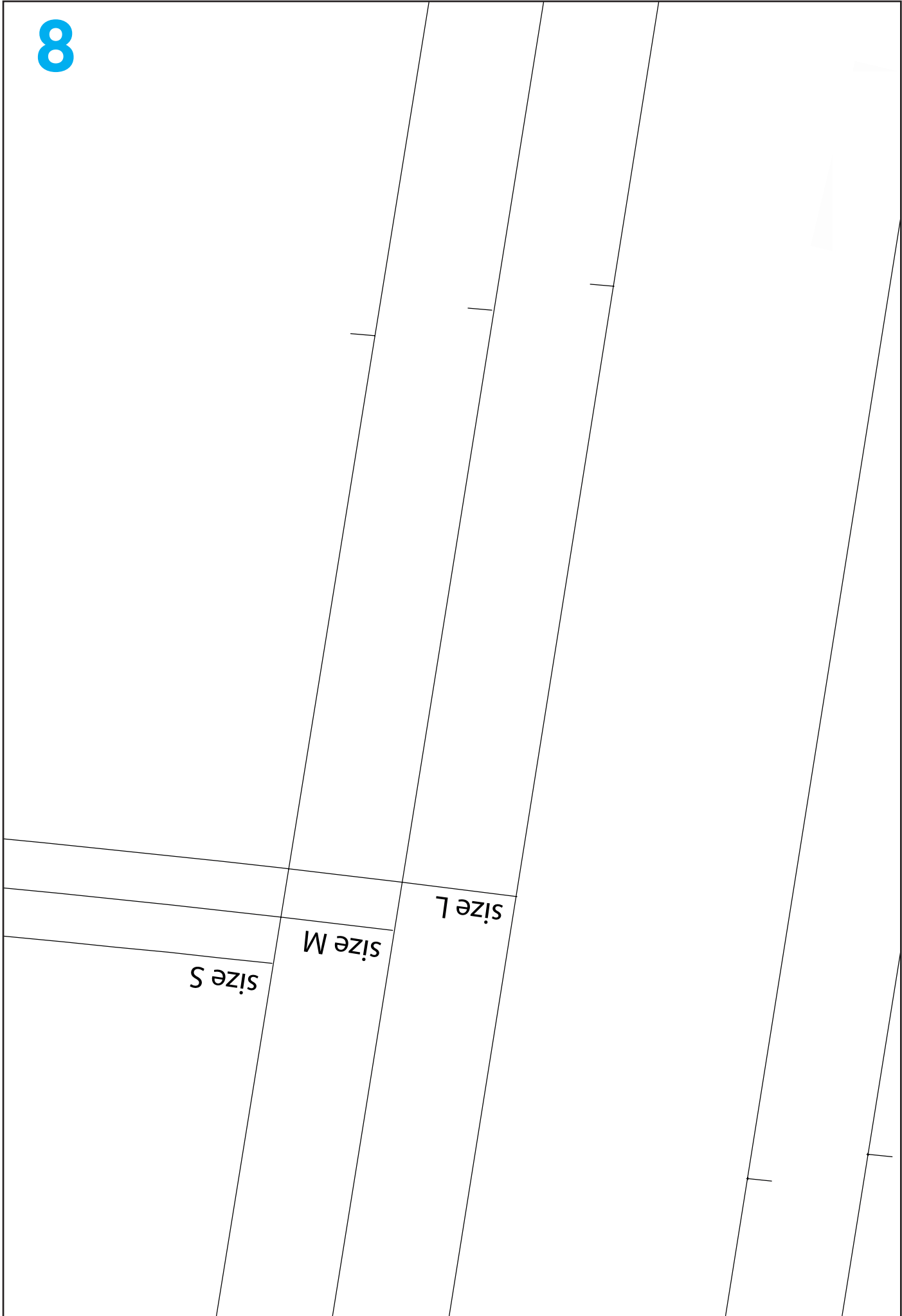
7



Jacket Cutting line



8



9

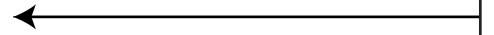


10

Place on fold

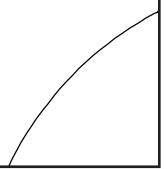
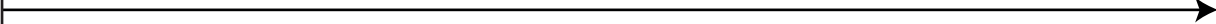


Lottie Coat  
Front  
Cut 2





Straight grain





13



size L  
size M

14

size S

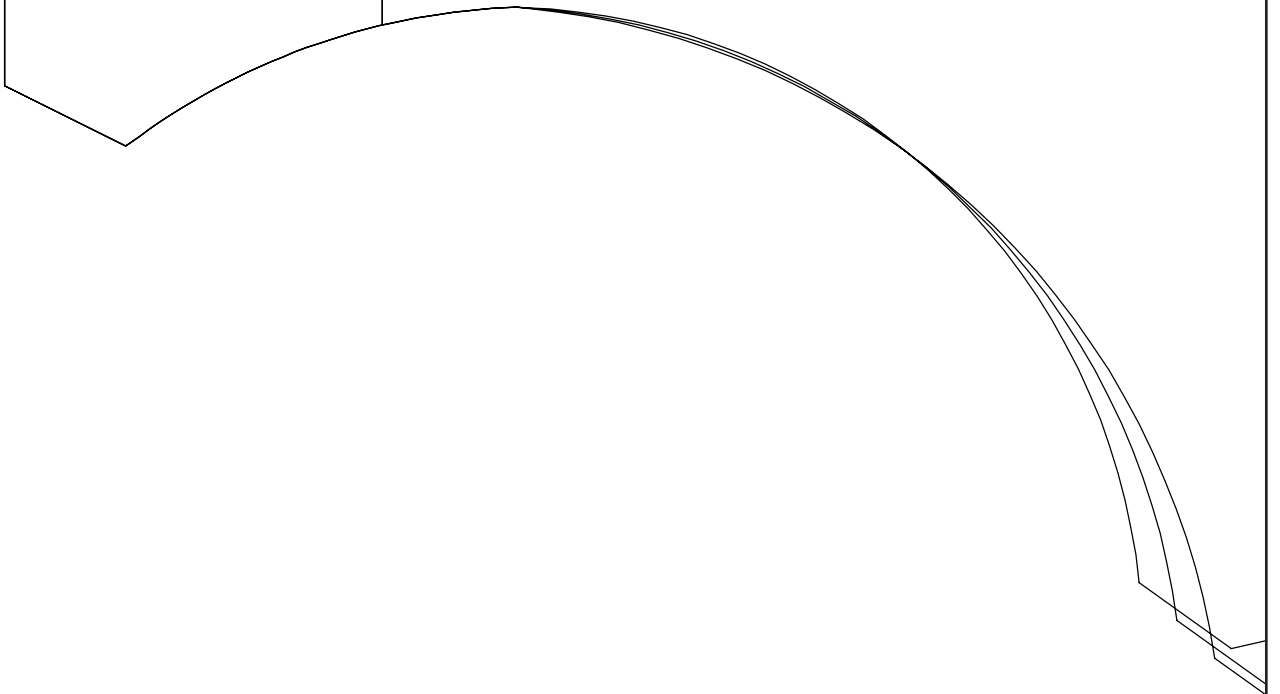
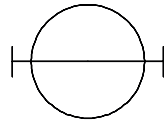


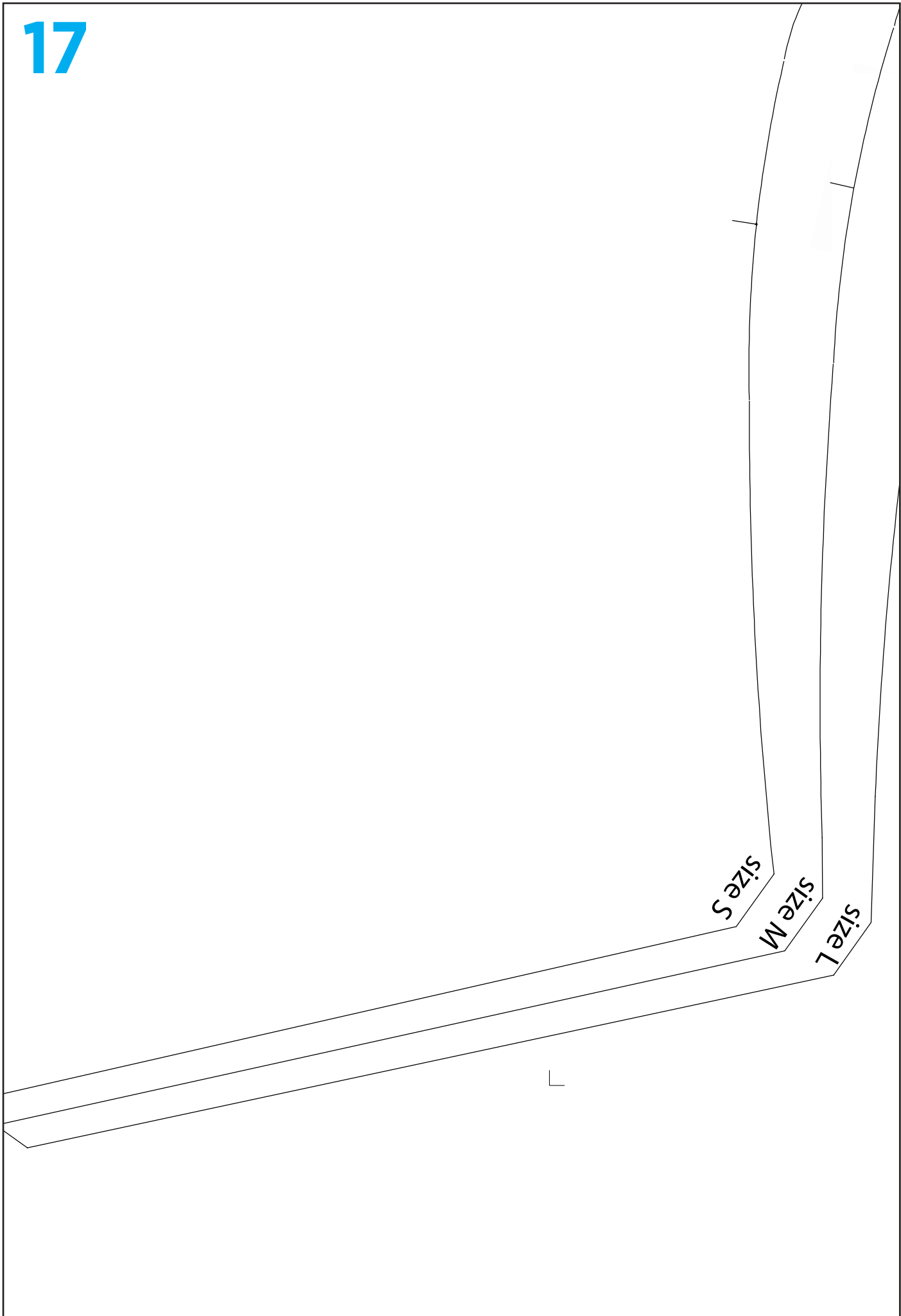
15

Jacket Cutting line



16



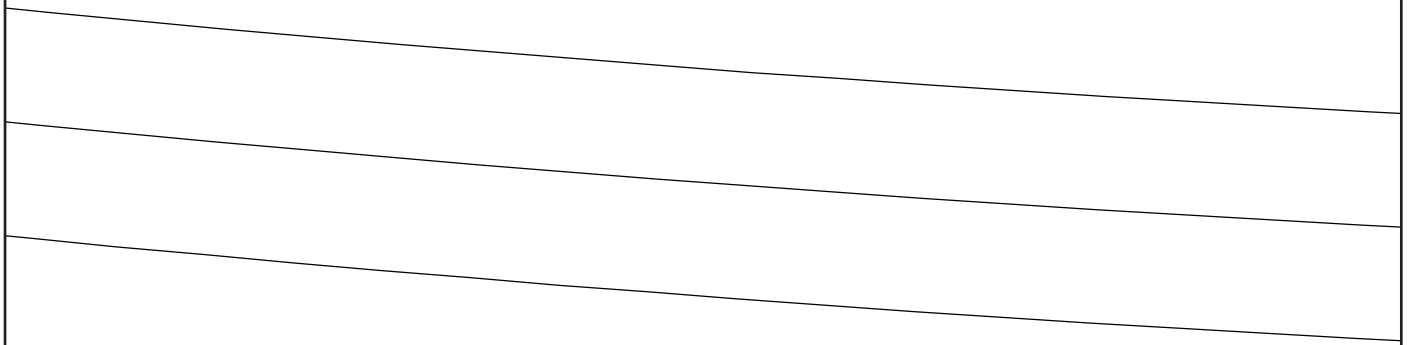


size L

size M

size S





20



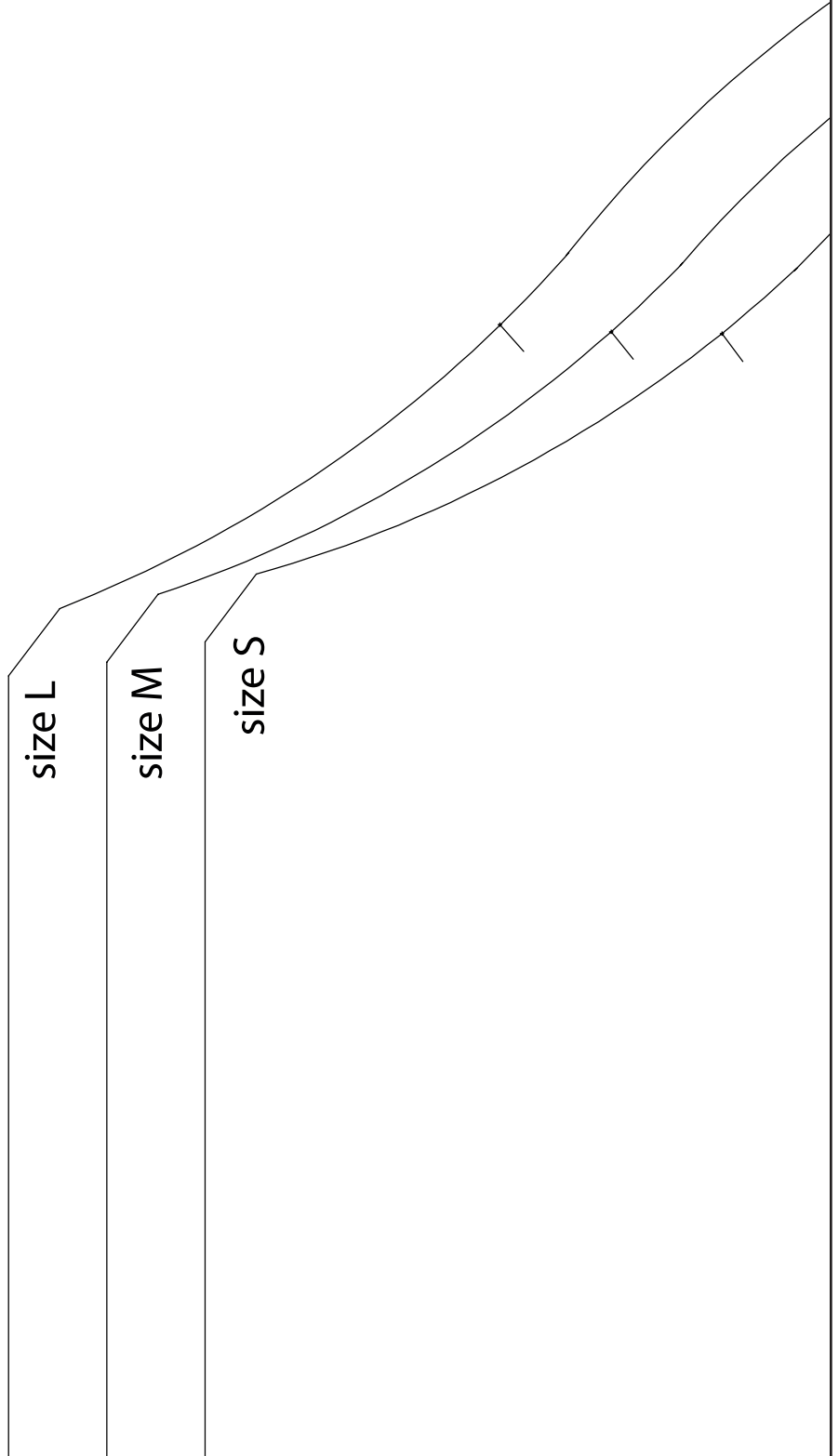
size S

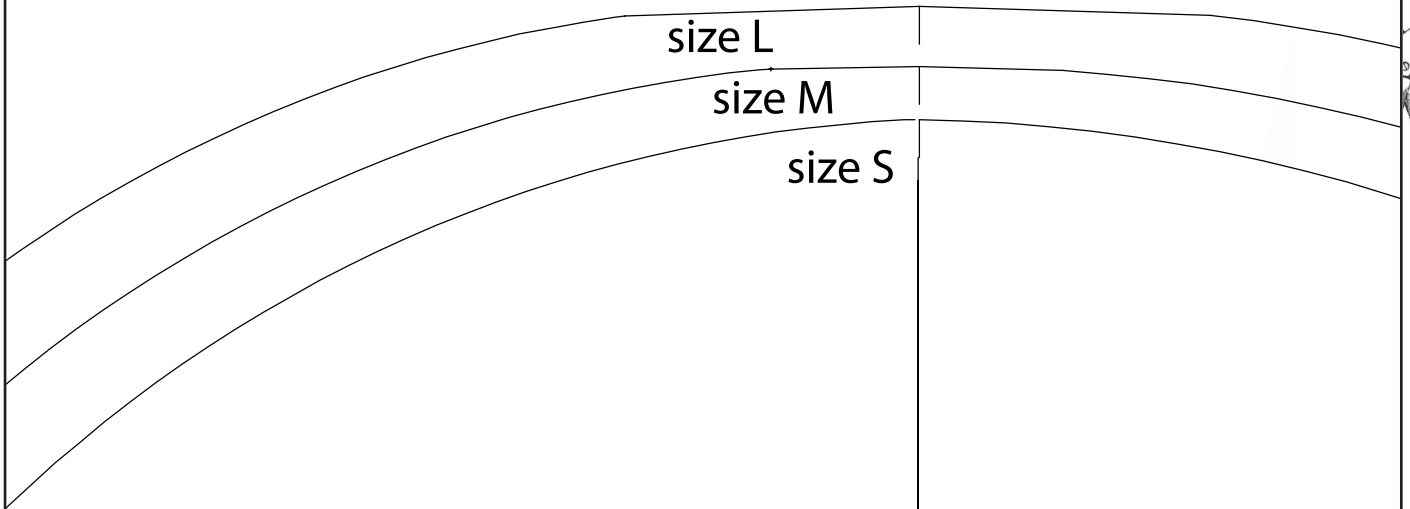
size M

size L









Front

# Lottie Coat Sleeve Cut 2

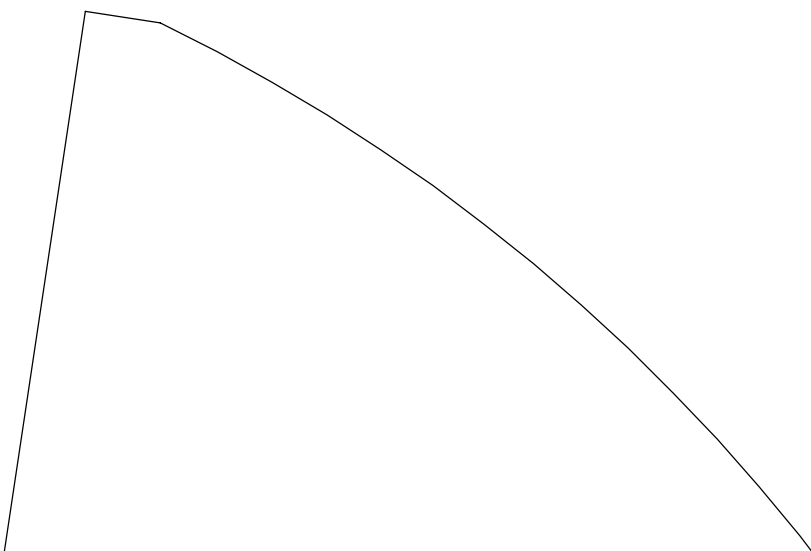
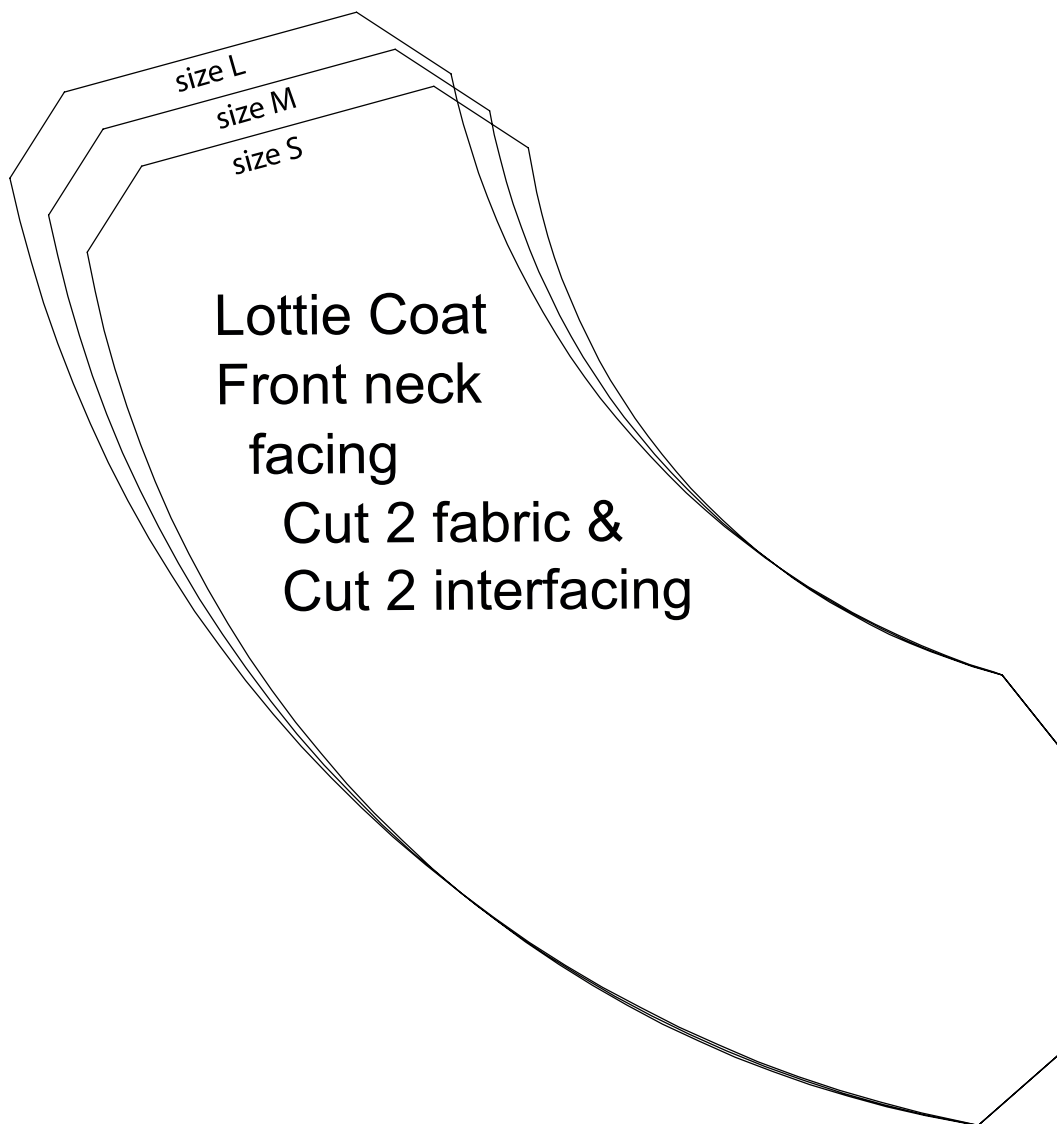


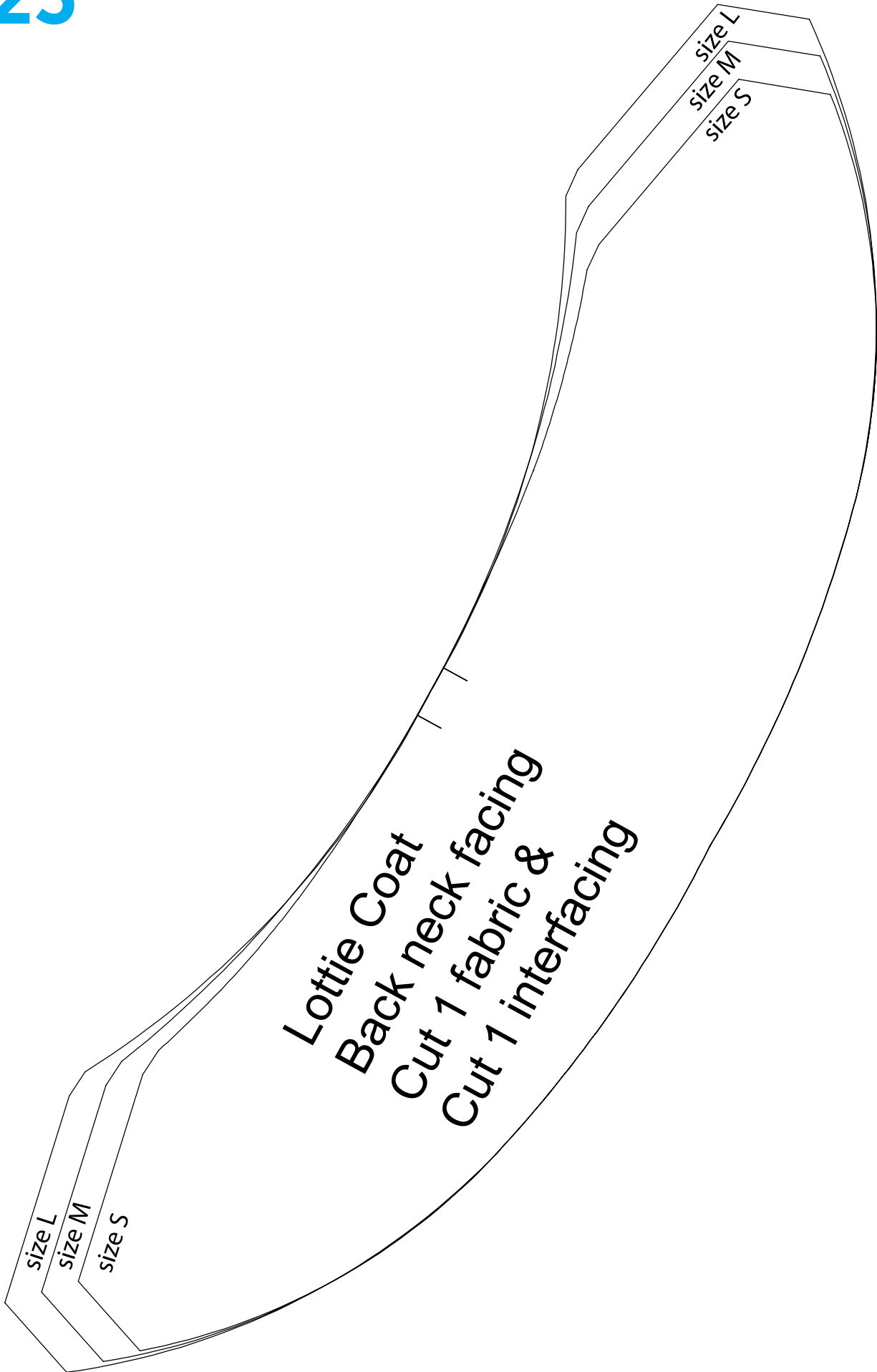
Back

size S

size M

size L





Lottie Coat  
Back neck facing  
Cut 1 fabric &  
Cut 1 interfacing





27

Straight grain



size S

size M

size L





**29**

**Lottie Coat  
Pocket bag  
Cut 4  
All sizes**

