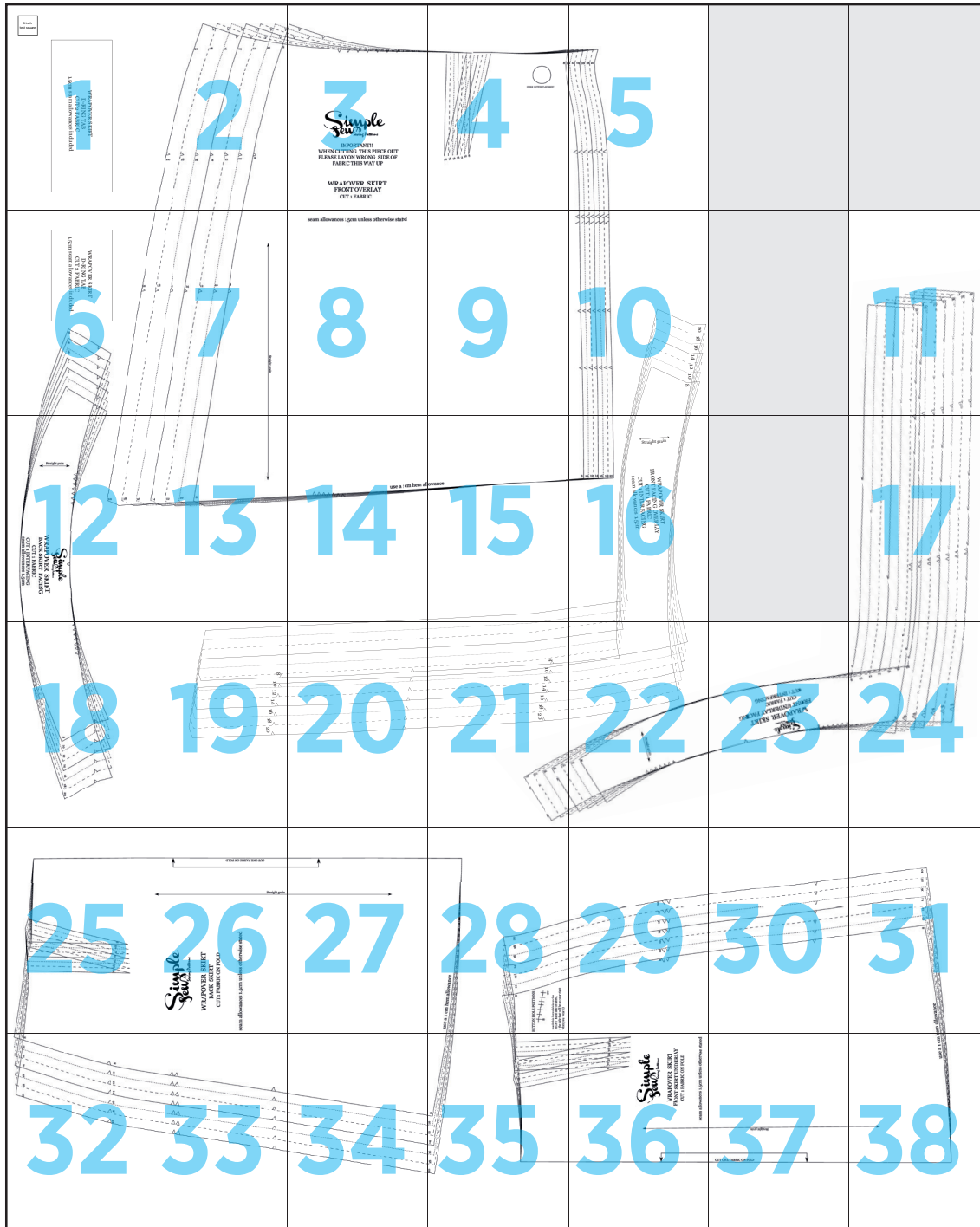


Wrap Skirt



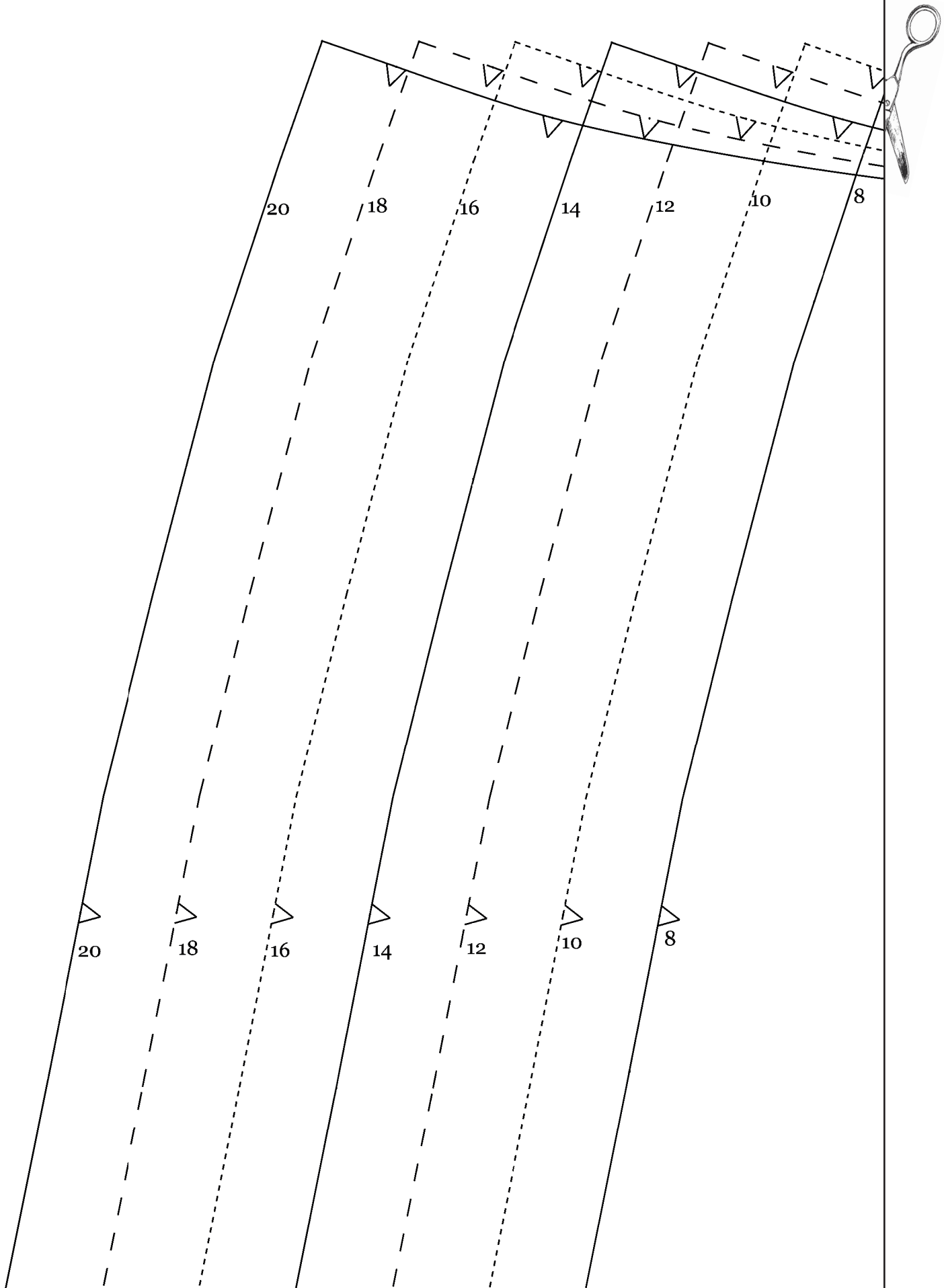


**WRAPOVER SKIRT
D-RING TAB
CUT 2 FABRIC
1.5cm seam allowances included**

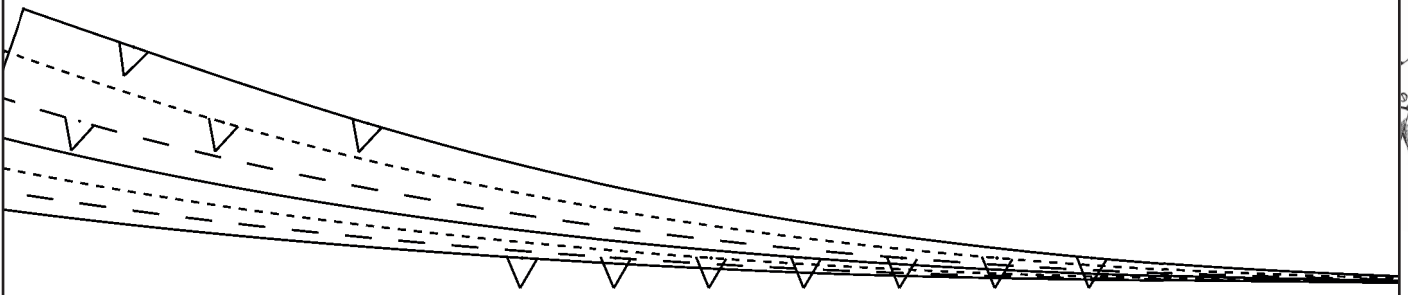
**1 inch
test square**

1

2



3

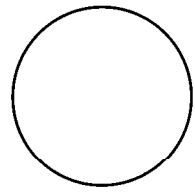
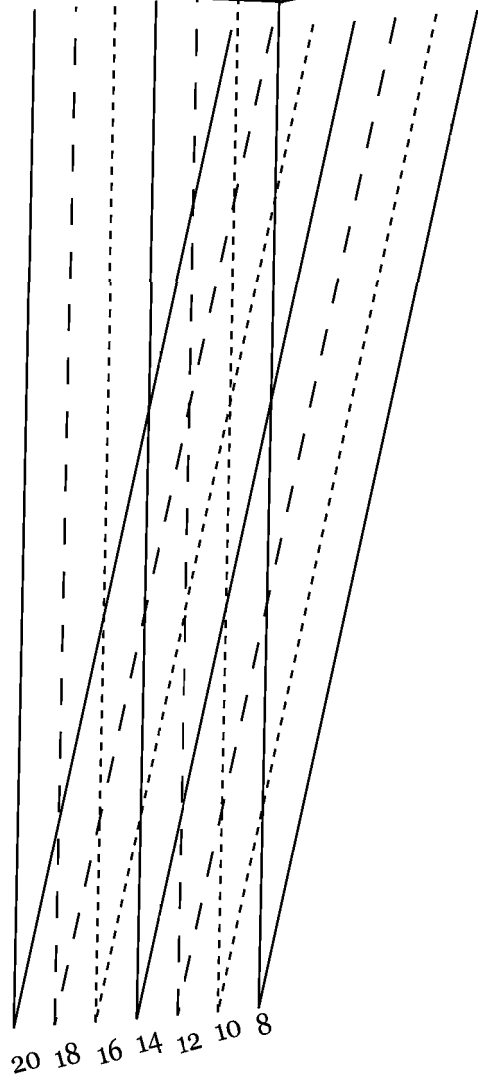


*Simple
Sew*
Sewing Patterns

IMPORTANT!!
WHEN CUTTING THIS PIECE OUT
PLEASE LAY ON WRONG SIDE OF
FABRIC THIS WAY UP

WRAPOVER SKIRT
FRONT OVERLAY
CUT 1 FABRIC

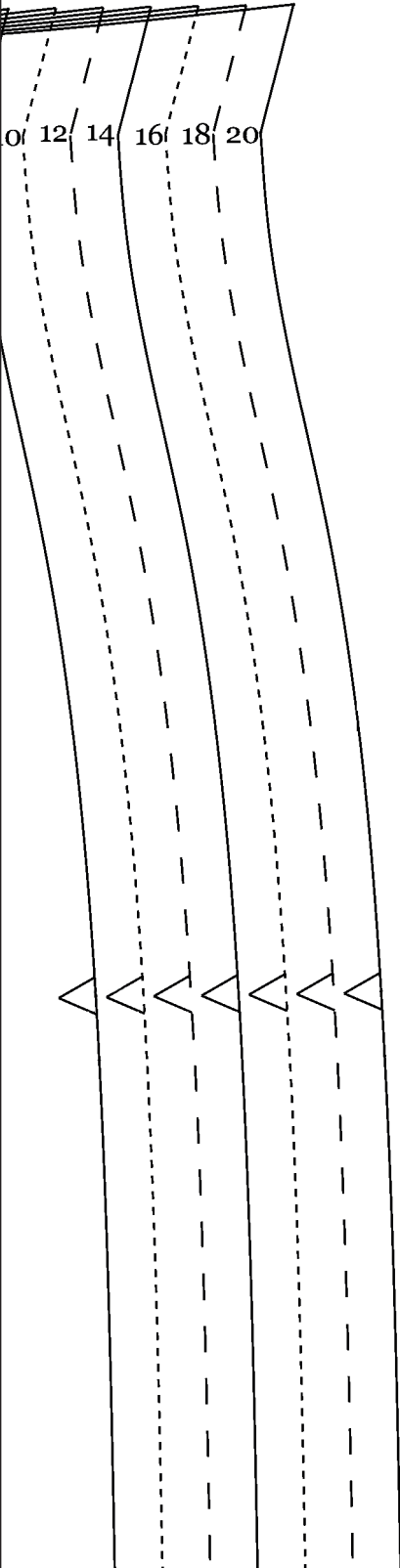
4



INNER BUTTON PLACEMENT

8

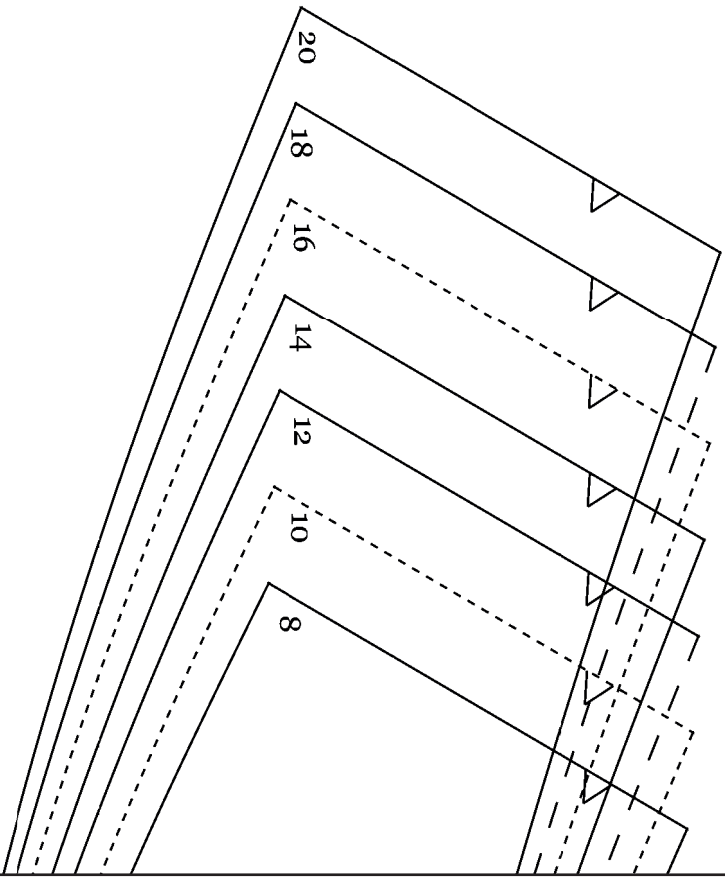
5





20

WRAPOVER SKIRT
D-RING TAB
CUT 2 FABRIC
1.5cm seam allowances included



7

18

16

14

12

10

8



Straight grain



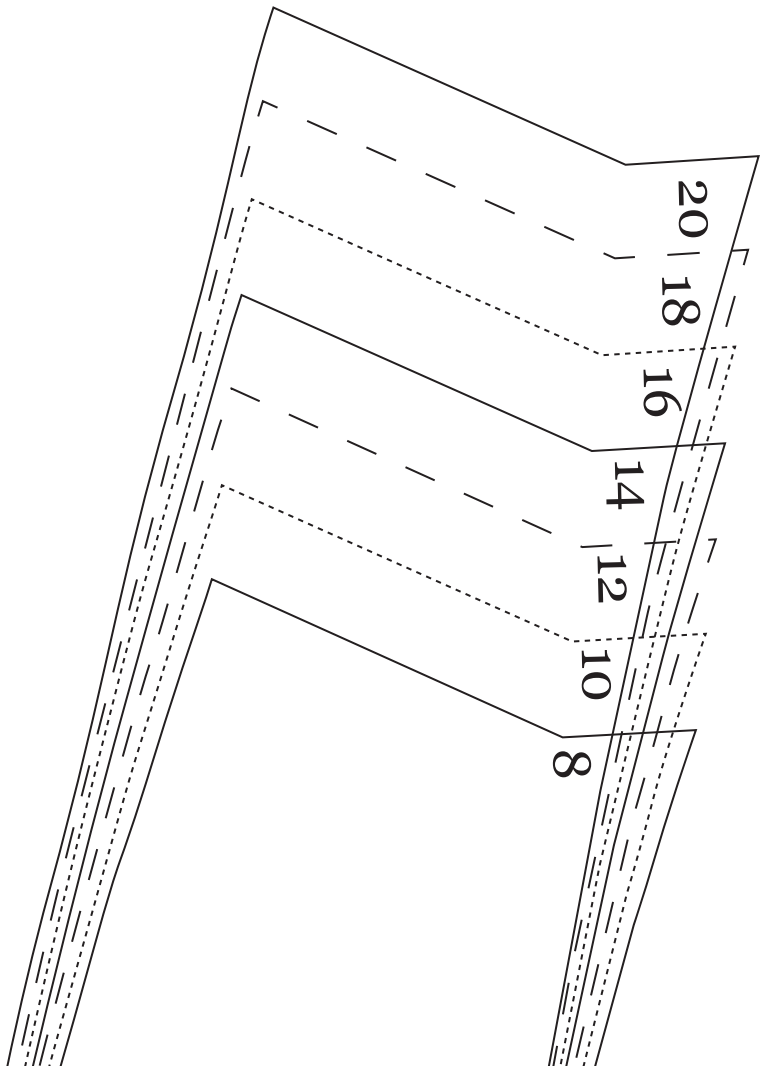
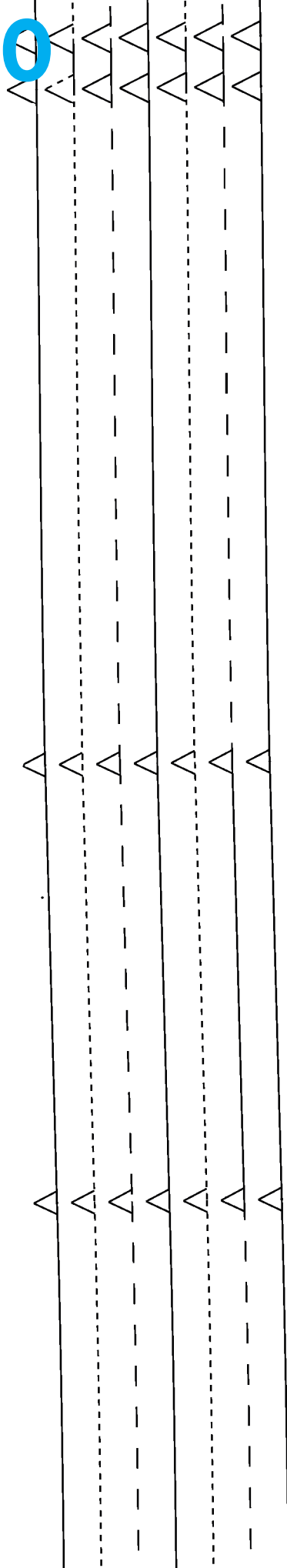
8

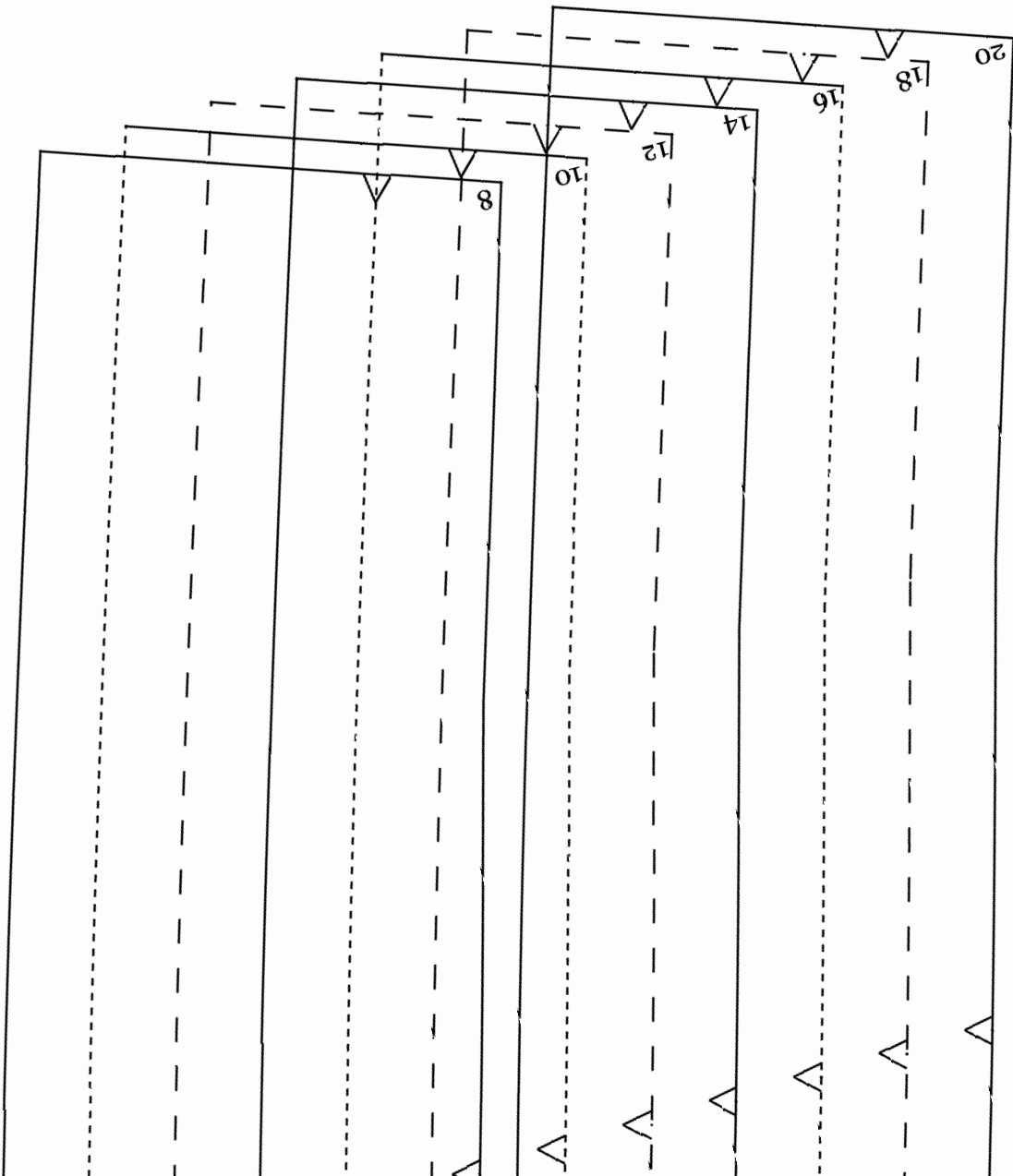
seam allowances 1.5cm unless otherwise stated

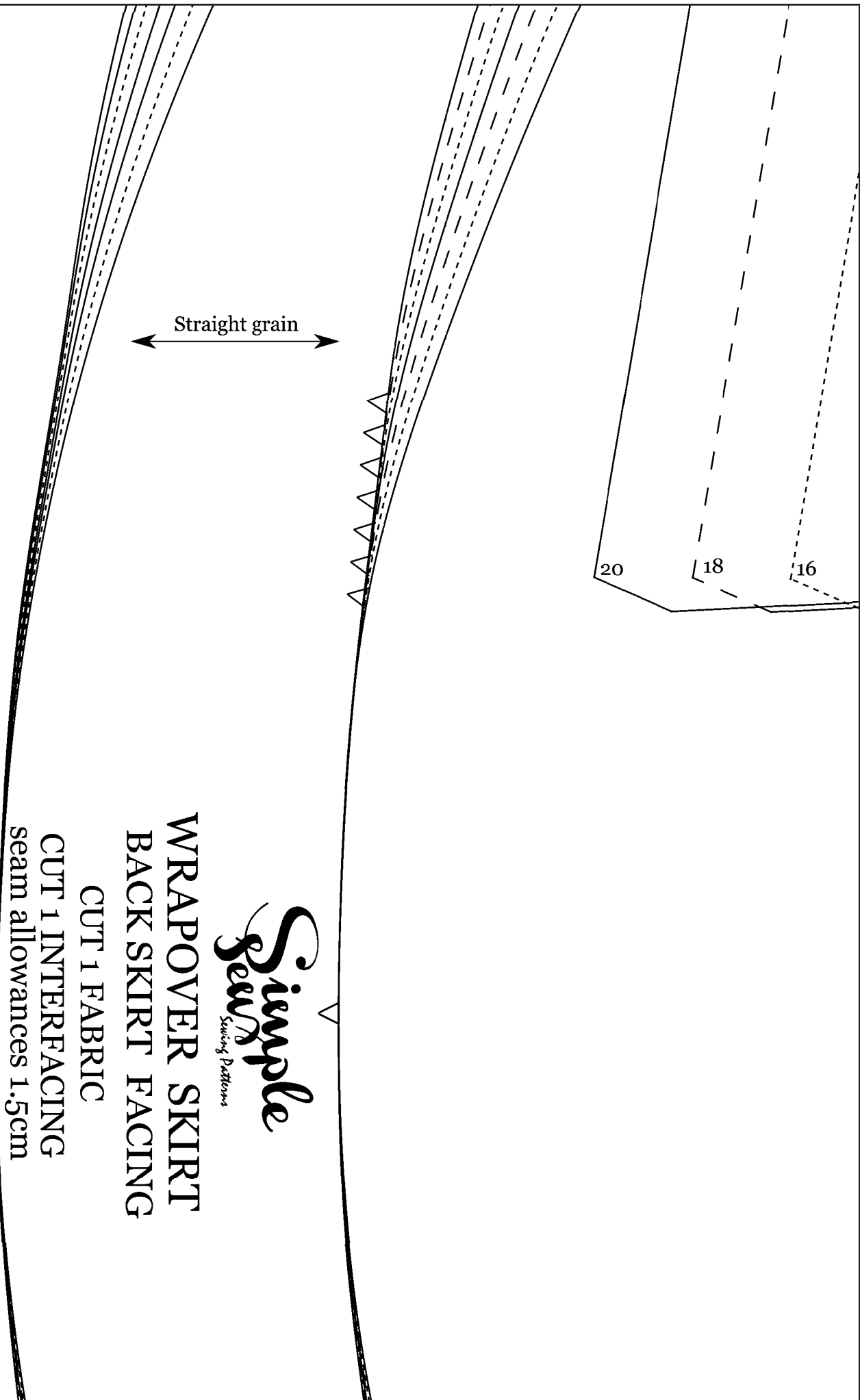




10







Simple Sew
Sewing Patterns

WRAPOVER SKIRT
BACK SKIRT FACING

CUT 1 FABRIC
CUT 1 INTERFACING
seam allowances 1.5cm

13



14

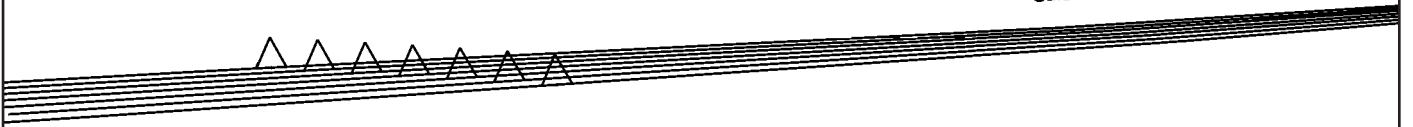
12

10

8



use a 1 cm hem all



15



lowance

8 10 12 14 16 18 20

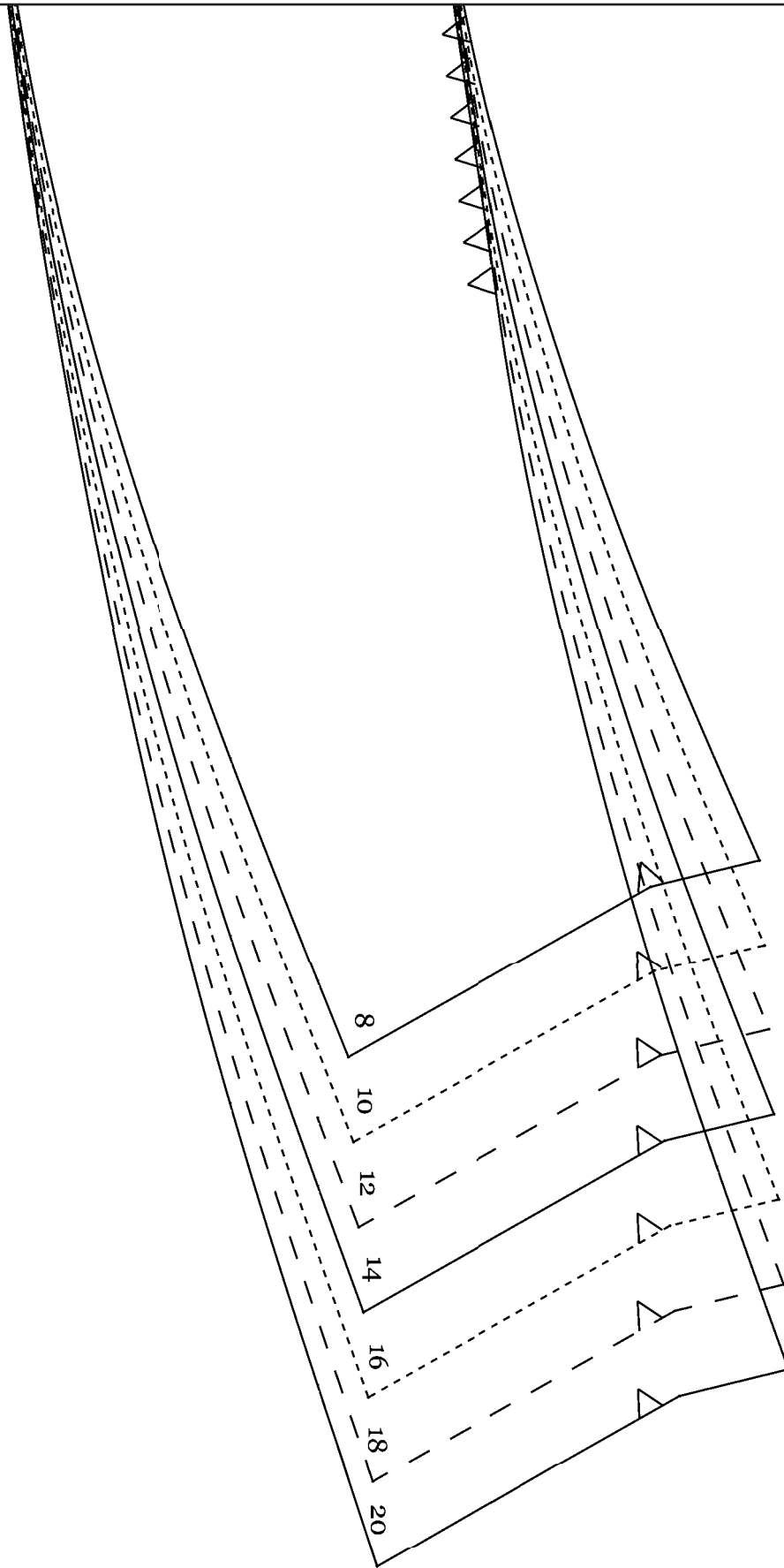
↔ Straight grain

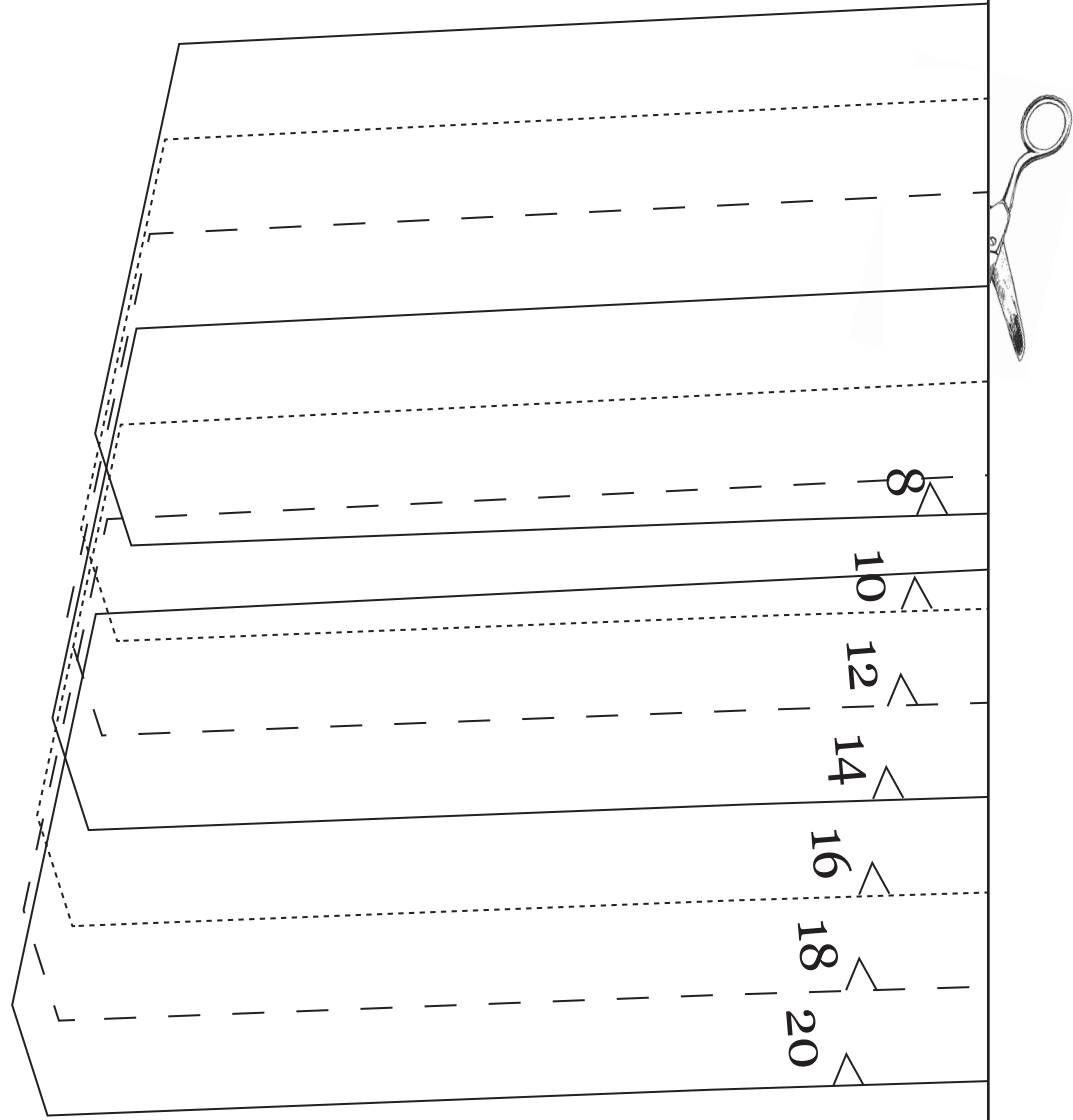
WRAPOVER SKIRT
FRONT FACING OVERLAY
CUT 1 FABRIC
CUT 1 INTERFACING
seam allowances 1.5cm



Handwriting practice area with four rows of dashed lines for tracing. The first row is empty. The second row contains two small triangles at the bottom. The third row contains two medium triangles. The fourth row contains two large triangles. The fifth row contains two very large triangles.







20



Handwriting practice area with multiple rows of lines. Each row consists of a solid top line, a dashed middle line, and a solid bottom line. The lines are slightly slanted upwards from left to right. Small triangles are placed on the dashed middle lines of the second, third, fourth, fifth, and sixth rows from the top, serving as guides for letter height.



8

10

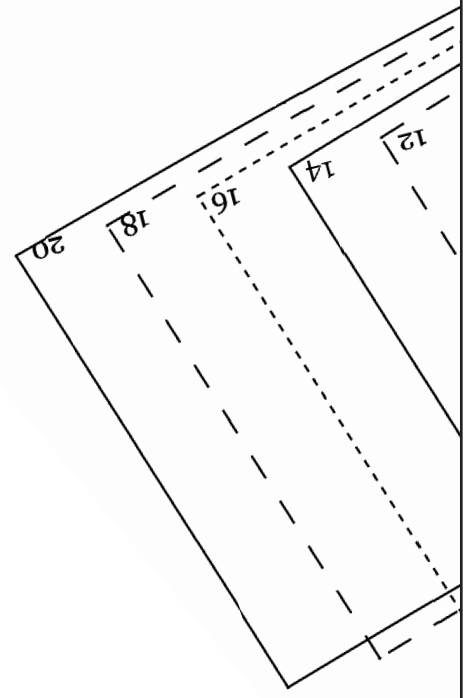
12

14

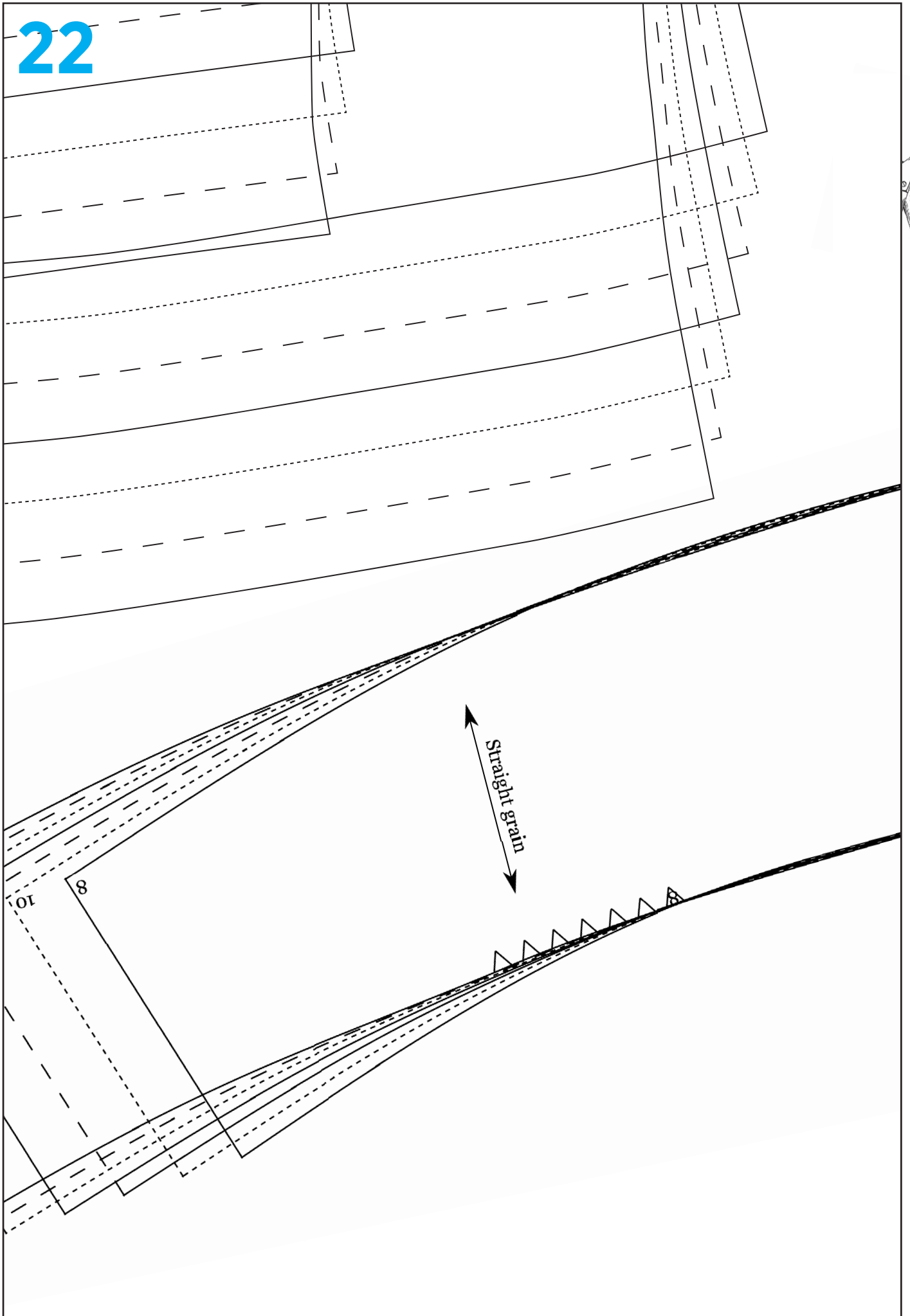
16

18

20



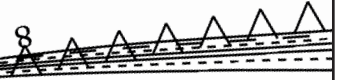
22



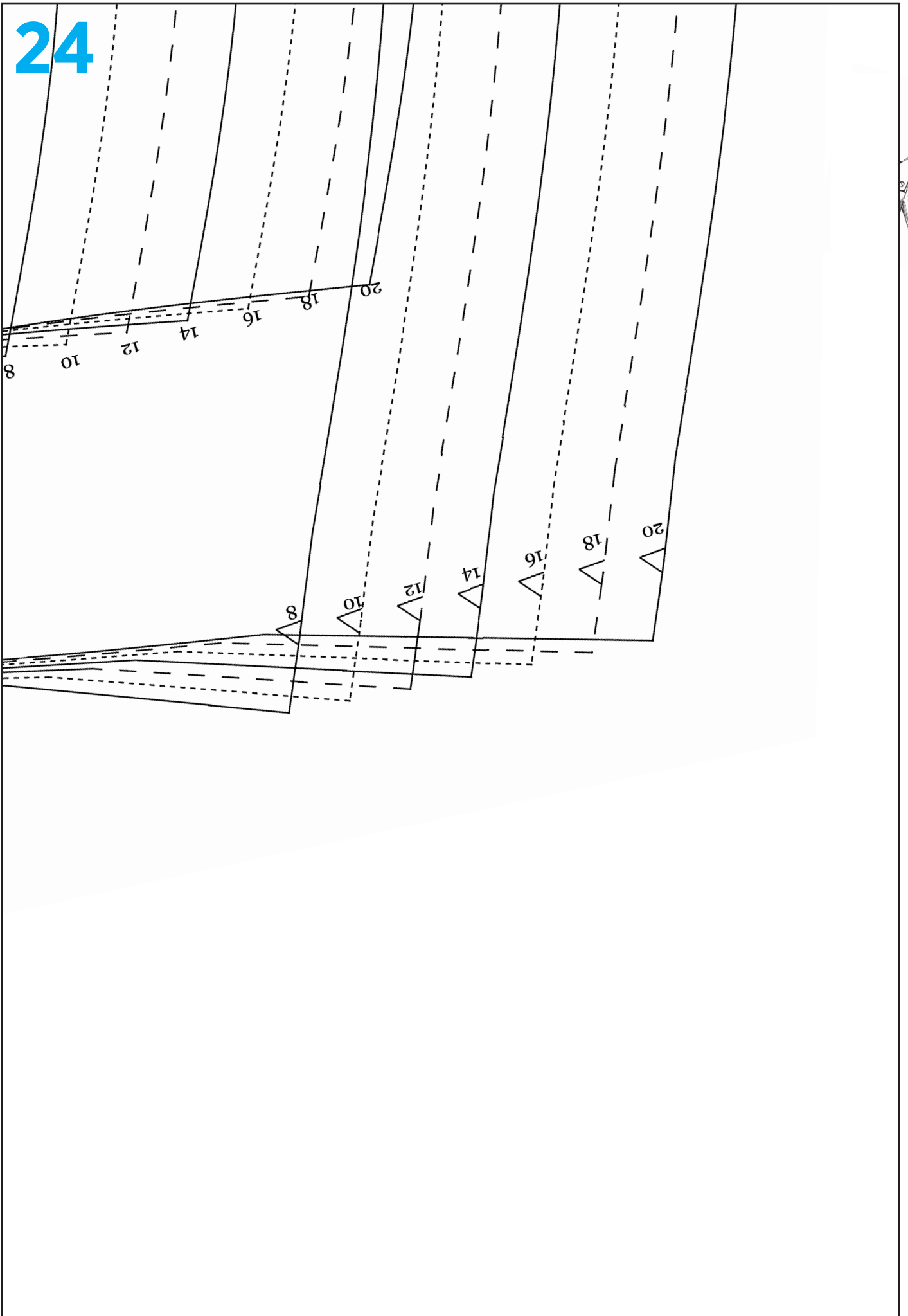


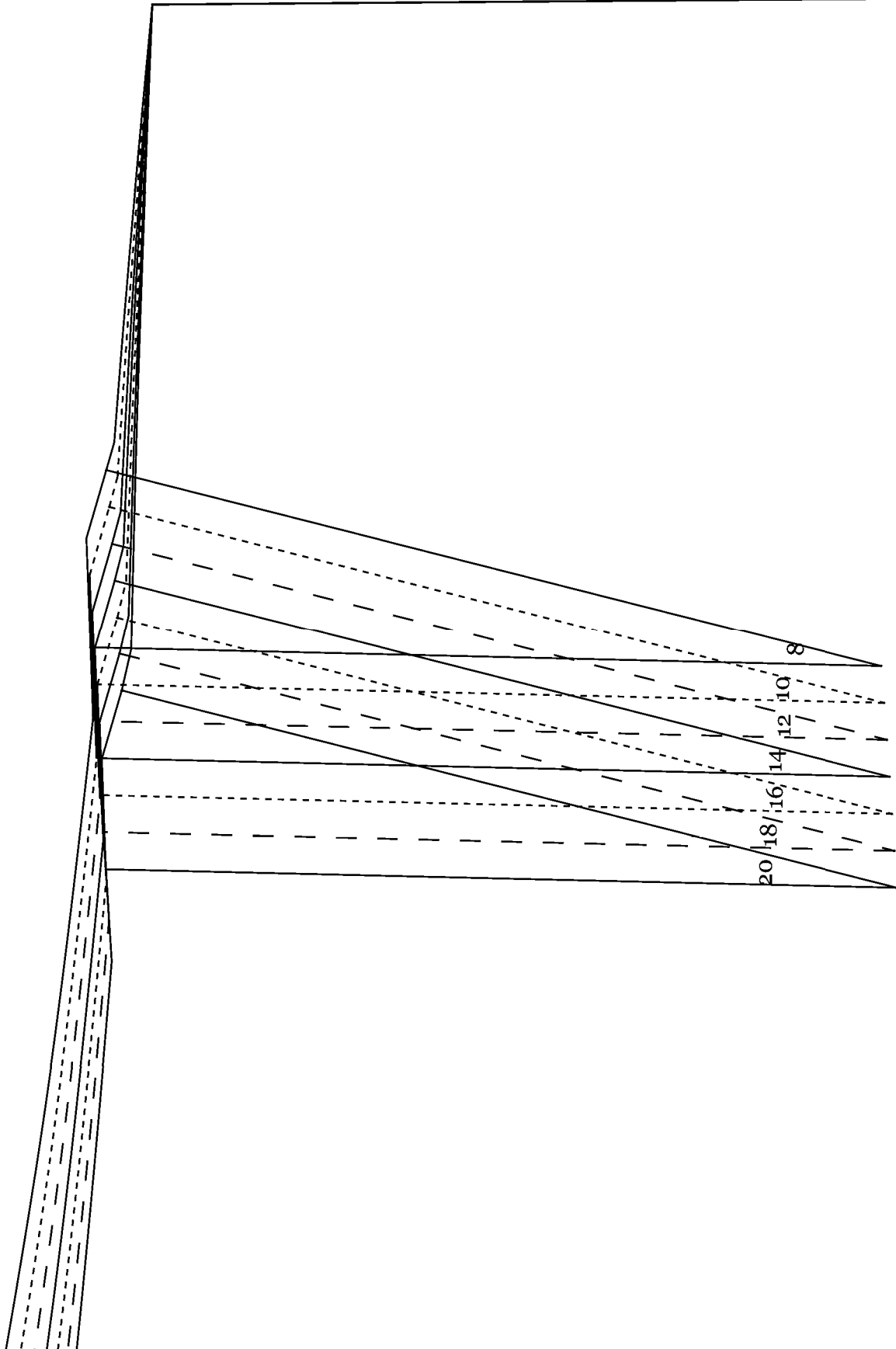
WRAP OVER SKIRT
FRONT UNDERLAY FACING
CUT 1 FABRIC
CUT 1 INTERFACING

Simple Sewing Patterns



24







CUT ONE FABRIC ON FOLD

Straight grain

Simple Sew

Sewing Patterns

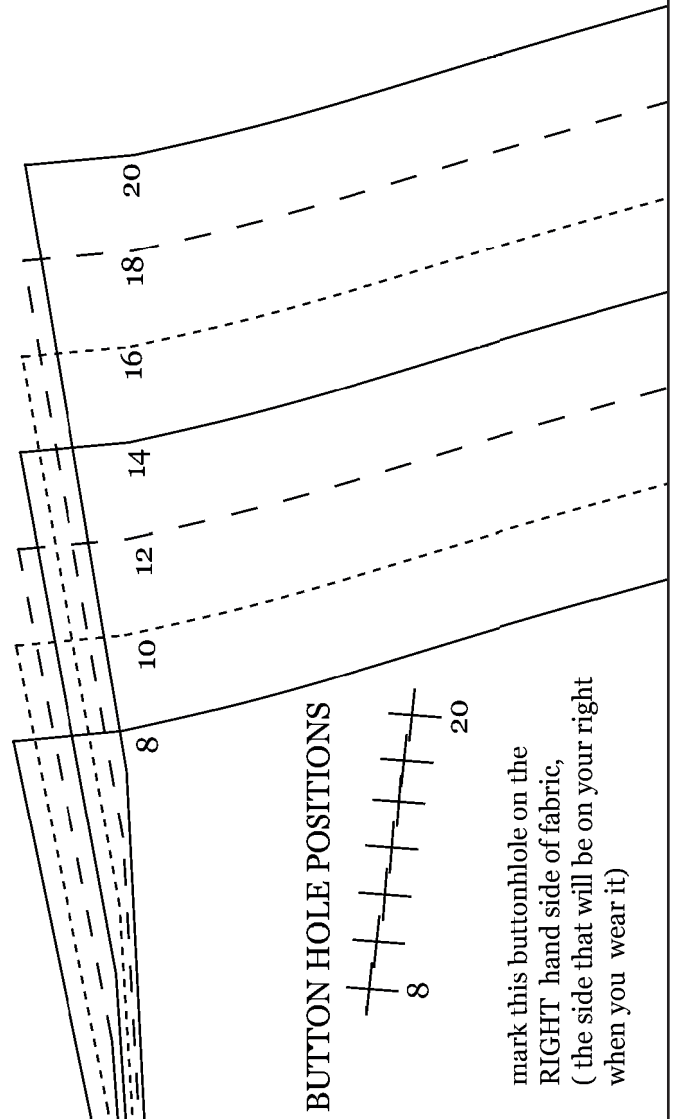
WRAPOVER SKIRT
BACK SKIRT
CUT 1 FABRIC ON FOLD

seam allowances 1.5cm unless otherwise stated

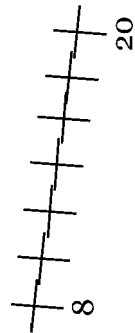
27



use a 1 cm hem allowance

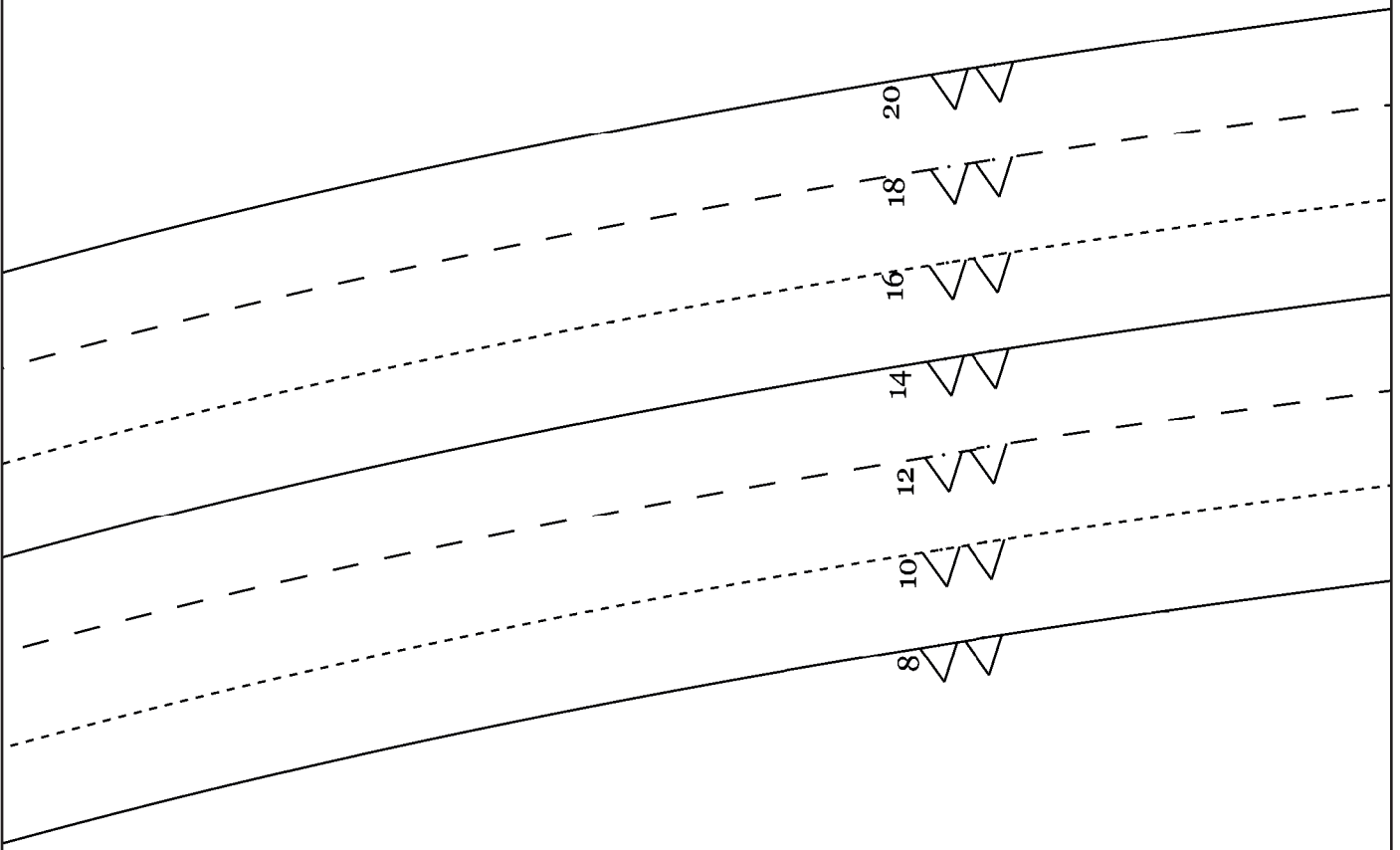


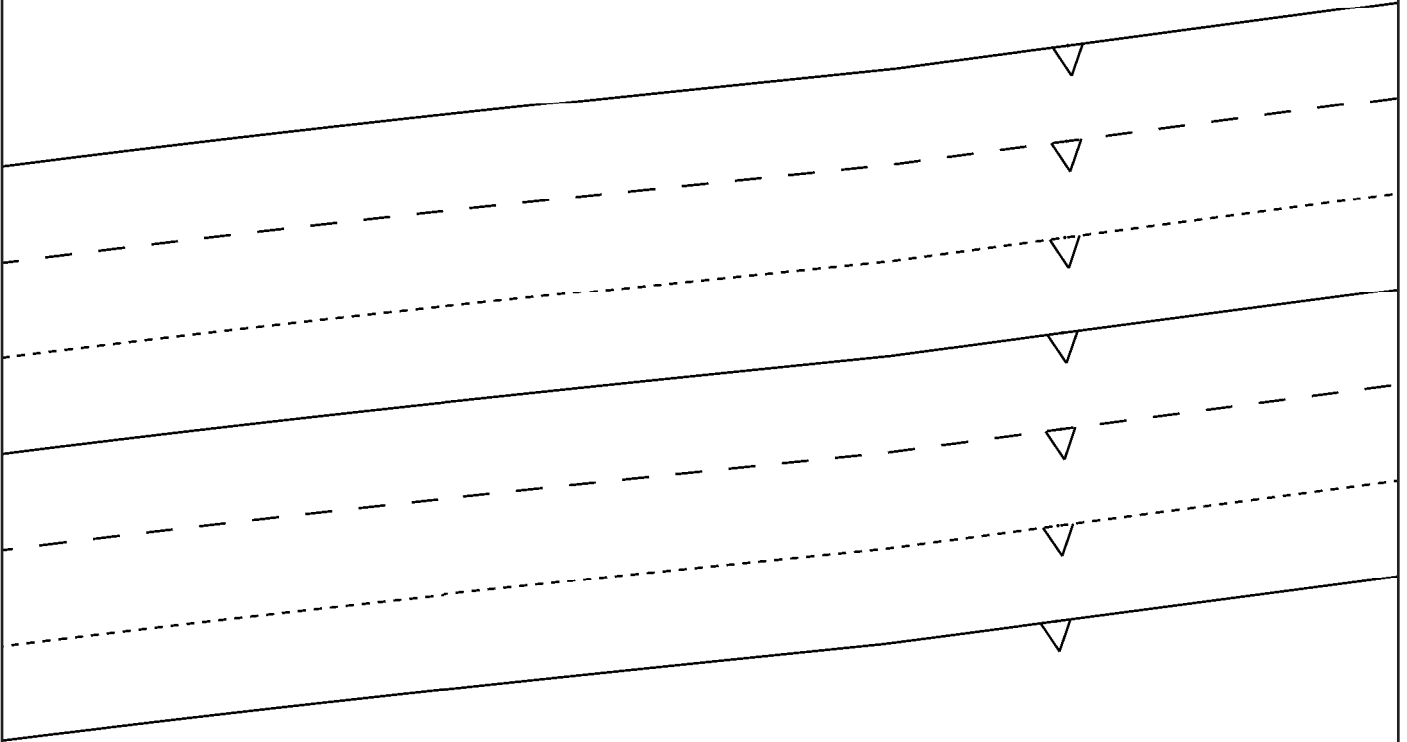
BUTTON HOLE POSITIONS

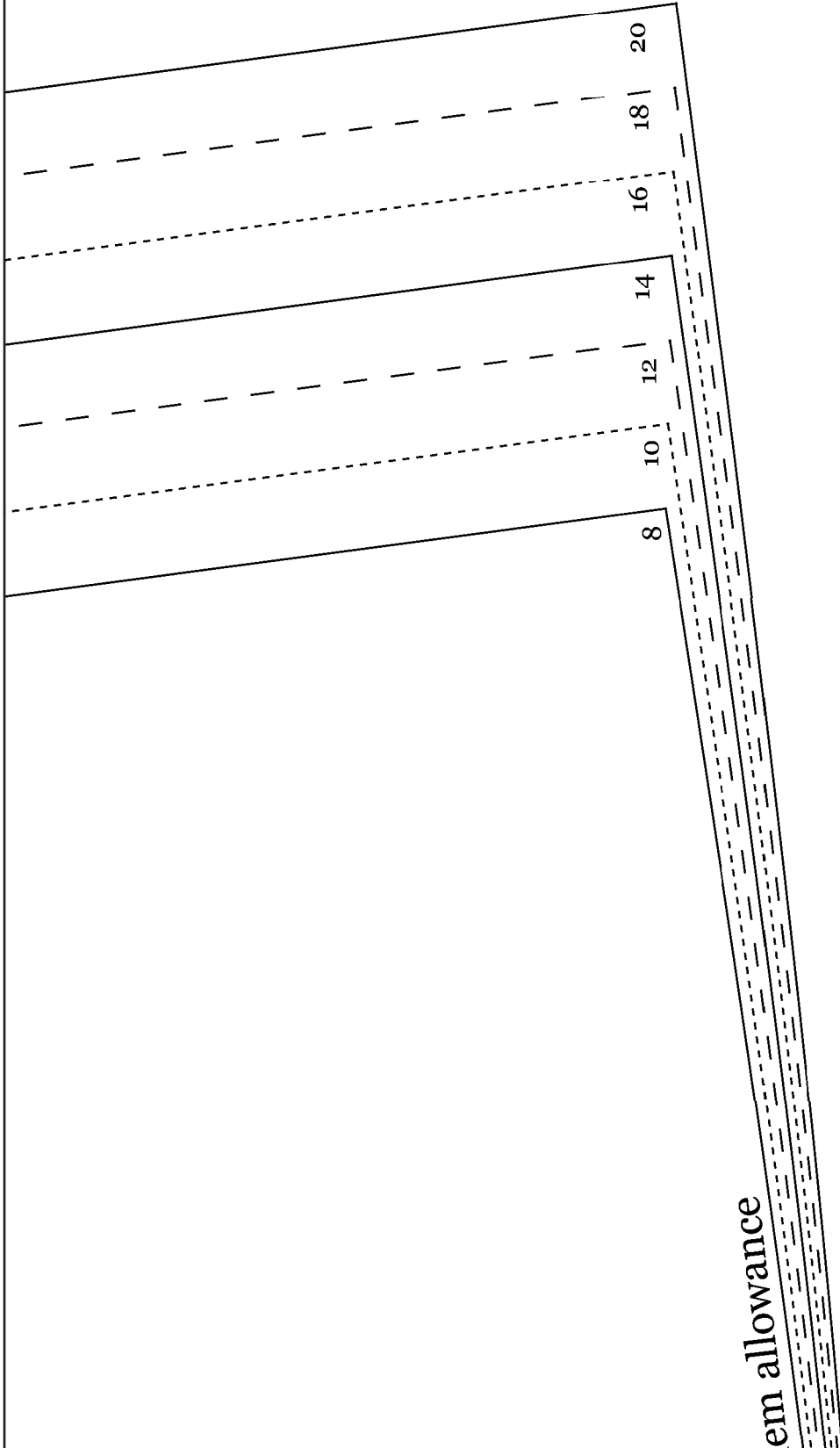


mark this buttonhole on the
RIGHT hand side of fabric,
(the side that will be on your right
when you wear it)

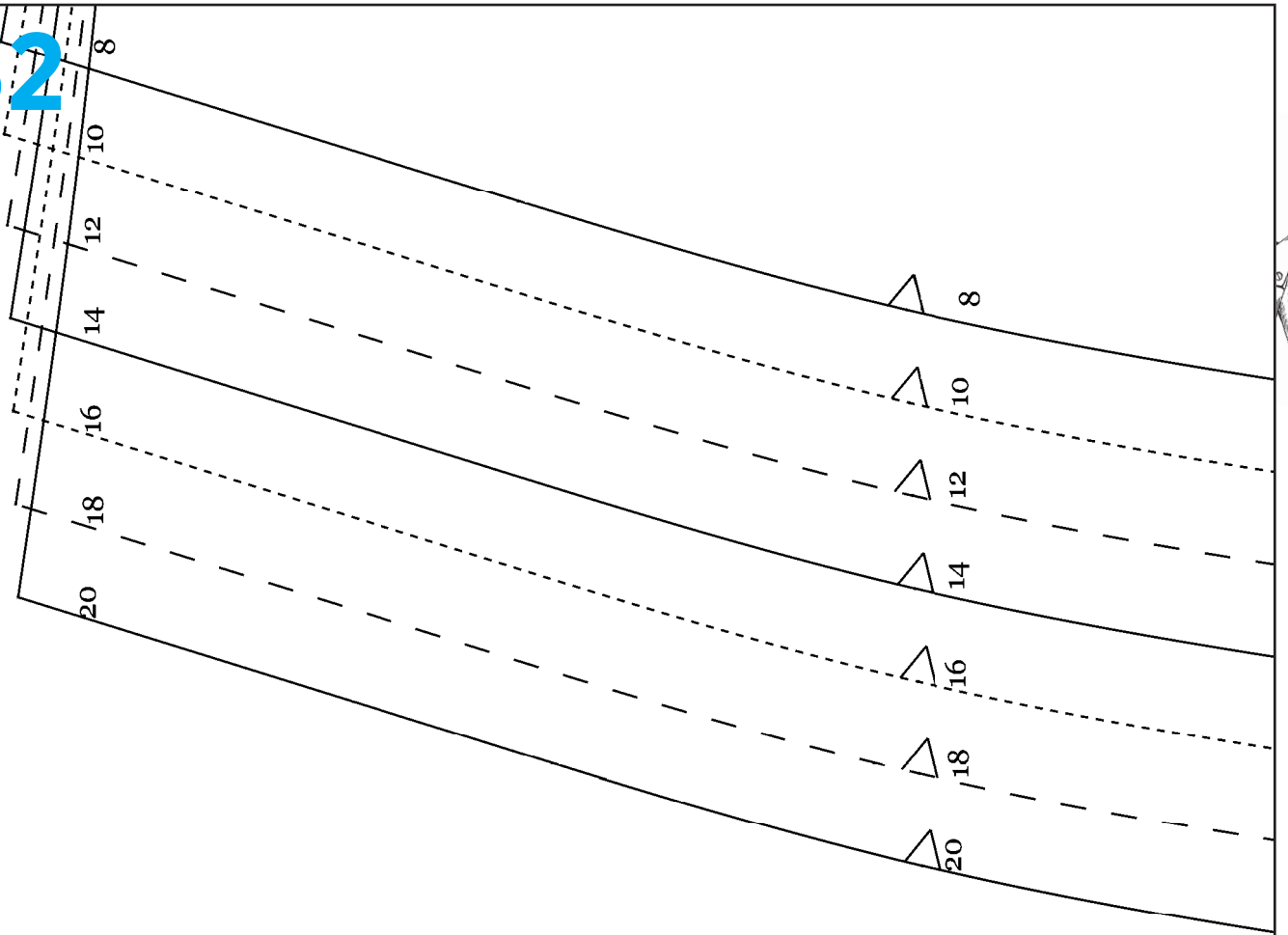


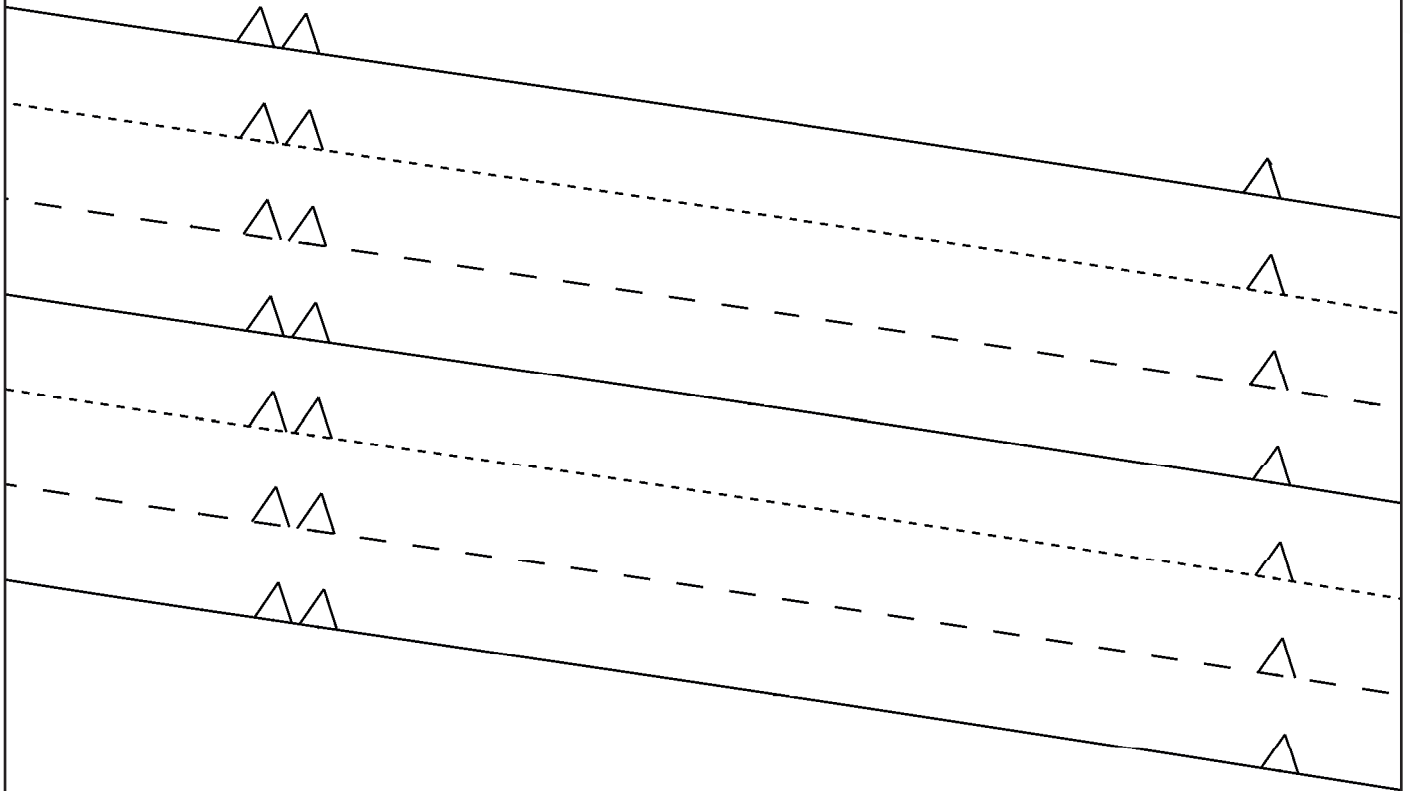


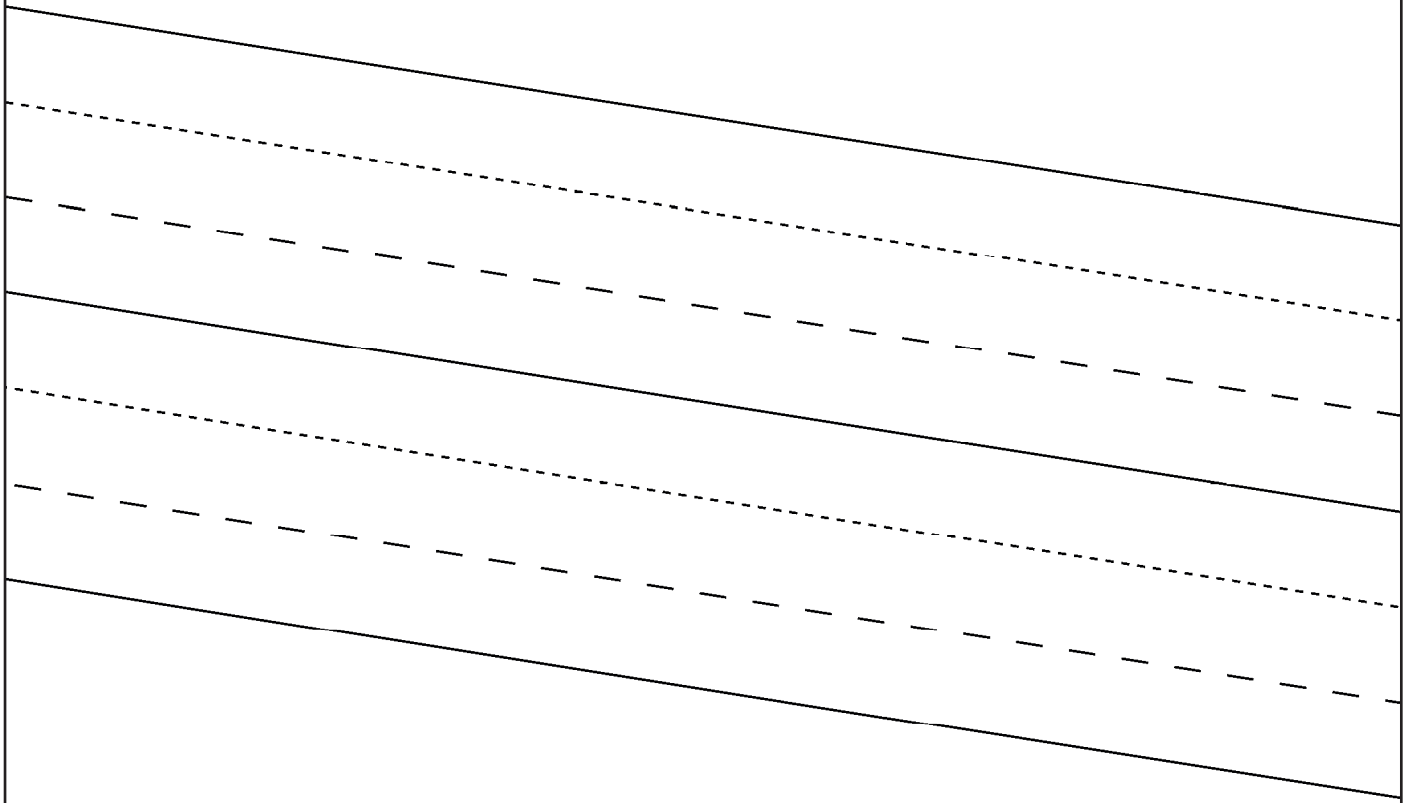




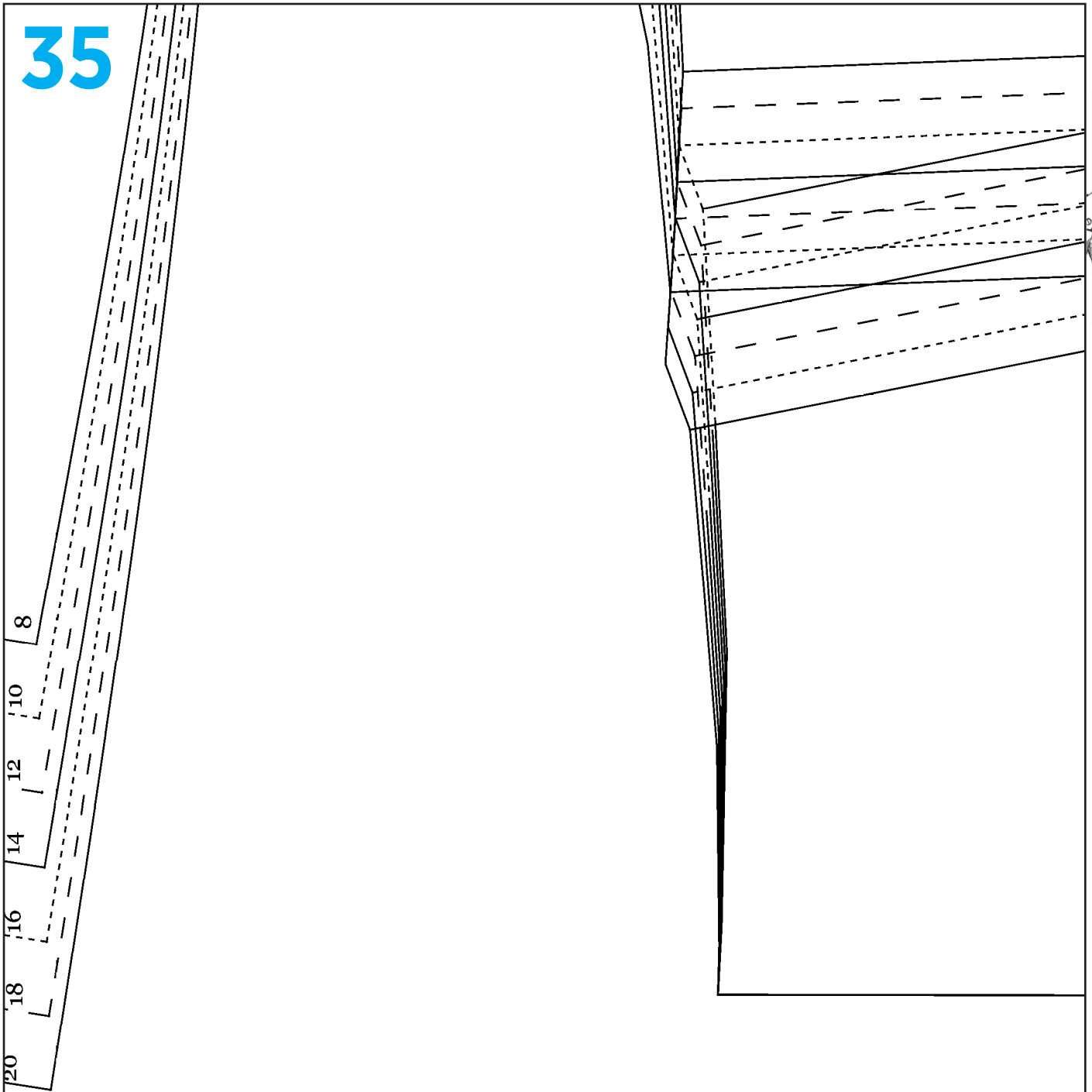
32



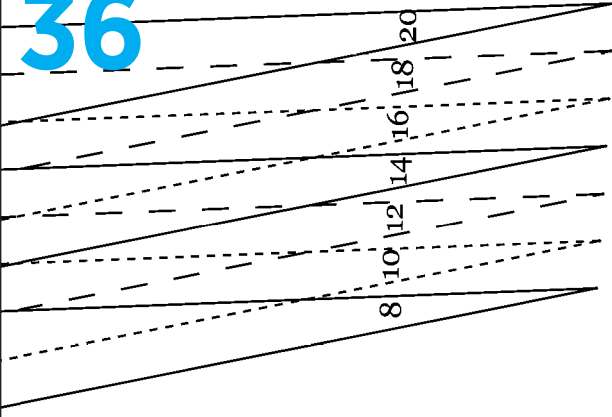




35



36



Simple Sewing Patterns

WRAPOVER SKIRT
FRONT SKIRT UNDERLAY
CUT 1 FABRIC ON FOLD

seam allowances 1.5cm unless otherwise stated





Straight grain

CUT ONE FABRIC ON FOLD



use a 1 cm h

