

Blank Slate Patterns®

Melly Sews

Men's T-shirt

Thank you for downloading this pattern. This PDF contains the pattern pieces only. The instructions can be accessed at

<http://mellysews.com/2014/05/mens-t-shirt-pattern.html>



Materials

1 yard of 60" wide knit fabric for the shirt

1/8 yard of rib knit for the neckband

A sewing machine that will do a zig-zag stitch

Like this free pattern?
Make sure to subscribe so
you never miss a new one:
<http://bit.ly/mellysews-news>

The Fine Print

All patterns, photos, and information contained in this pattern are the property of Melissa Mora. All rights reserved. Reproduction and redistribution by any means are not permitted. No part of this pattern including, but not limited to, images, diagrams, or verbiage may be used to create other patterns. This pattern or any of its components may not be copied, emailed or shared in any way privately or in a group setting, including any and all social media forums. All components of this pattern are copyrighted and owned by Blank Slate Patterns®. This pattern is intended and licensed for personal use only. Sales of products produced using this pattern must be done by obtaining a Limited Production License. Please contact Melissa Mora for more info:
mellysews@gmail.com

Test Square

2" x 2"

5 cm x 5 cm

©2014 Melissa Mora

Licensed for personal use only

You may not sell, copy or redistribute this pattern through any means

You may not sell items made from this pattern without a limited production license

Assembly Instructions:

Print all pages in Adobe Reader.

Make sure Scaling is set to "none"

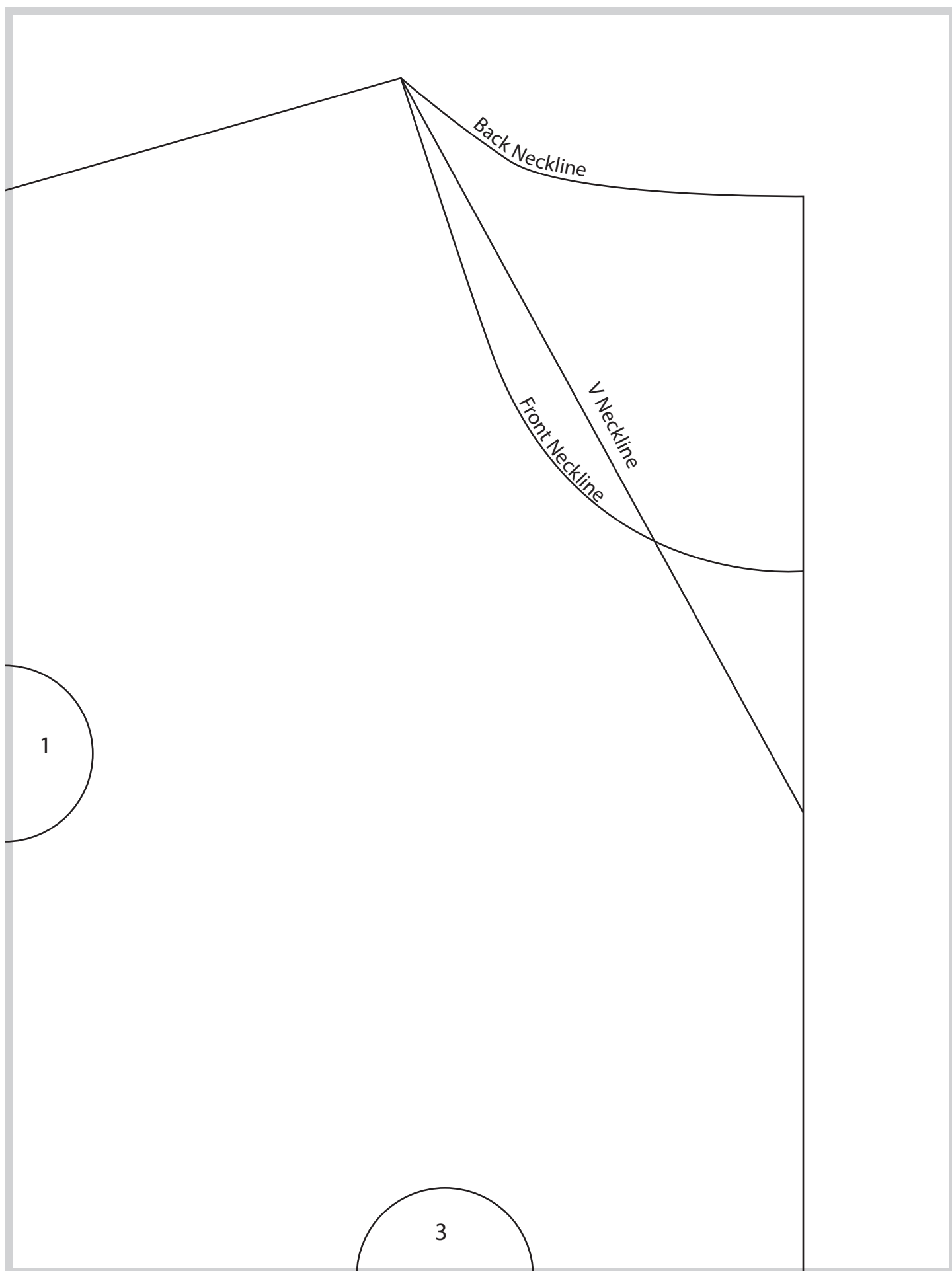
Make sure auto rotate and center is checked

Cut on the outside of the gray boxes

Tape together at marked circles

1

2



2

Cut here for V neck

Cut here for crew neck

4

5

3

Men's T-shirt
by *Melly Sews*
Size Medium
FRONT and BACK
Cut 2 on fold

1/2" (6mm) seams allowed

4

6

FOLD

Men's T-shirt
by *Melly Sews*
Size Medium
NECKBAND

Make sure fabric stretches this direction



Cut 1 of rib knit

1/2" (6mm) seams allowed

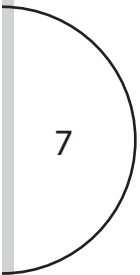
5

7



6

← Make sure fabric stretches this direction →



7

8

Men's T-shirt
by *Melly Sews*
Size Medium
SLEEVE

Cut 2 on fold

1/2" (6mm) seams allowed

← Make sure fabric stretches this direction →

8

FOLD

