

NOELLE

A SIMPLE, HALTER BRALETTE + PANTY



BY MADALYNNE
WWW.MADALYNNE.COM
INSTAGRAM: @MMADALYNNE
TWITTER: @MMADALYNNE

NOELLE: A SIMPLE, HALTER BRALETTE + PANTY



OVERVIEW

NOELLE IS A HALTER BRALETTE AND HIGH-WAISTED PANTY. THE BRALETTE FEATURES A RACERBACK, ADJUSTABLE STRAPS AND A WIDE BOTTOM BAND

I HOPE YOU ENJOY THE
NOELLE, A PDF PATTERN
FOR ALL LEVEL SEWISTS!

OVERVIEW:

Noelle is a halter bralette and panty. The bralette features a racerback, adjustable straps and a wide bottom band. It is fully lined to add support and comfort, and is finished with picot elastic. Since it is a soft bralette (no underwires), it has a forgiving fit. It can be worn as an undergarment or as a crop top.

INTENDED BRA MAKERS:

Since Noelle doesn't have underwires, the support comes from compression and fabric. Noelle was designed for women with smaller chests (cup sizes

AA-D), but can be worn by women with larger chests (cup sizes larger than D). If you are larger-chested, it is advised that you use fabric with less stretch and/or use a firm lining (i.e. powernet).

SUGGESTED FABRICS:

The pattern was designed for stretch lace, lycra or mesh that has 30-40% stretch in one or both directions. Fabrics with more than 50% stretch should be lined with another stretch fabric.

RECOMMEND LININGS:

Stretch mesh, micro mesh or powernet.

GETTING STARTED:

PRINT PATTERN: Be sure that your print settings are not set to scale or zoom, and that you are printing at 100%. To ensure you're printing at the right size, print out the page with the test square first and

measure to ensure that it is the specified dimensions.

If it doesn't, you will need to adjust your printer or your computer settings.

FIND YOUR SIZE:

Determine your size using the size chart diagram. If you are between sizes, then size DOWN.

SEAM ALLOWANCES:

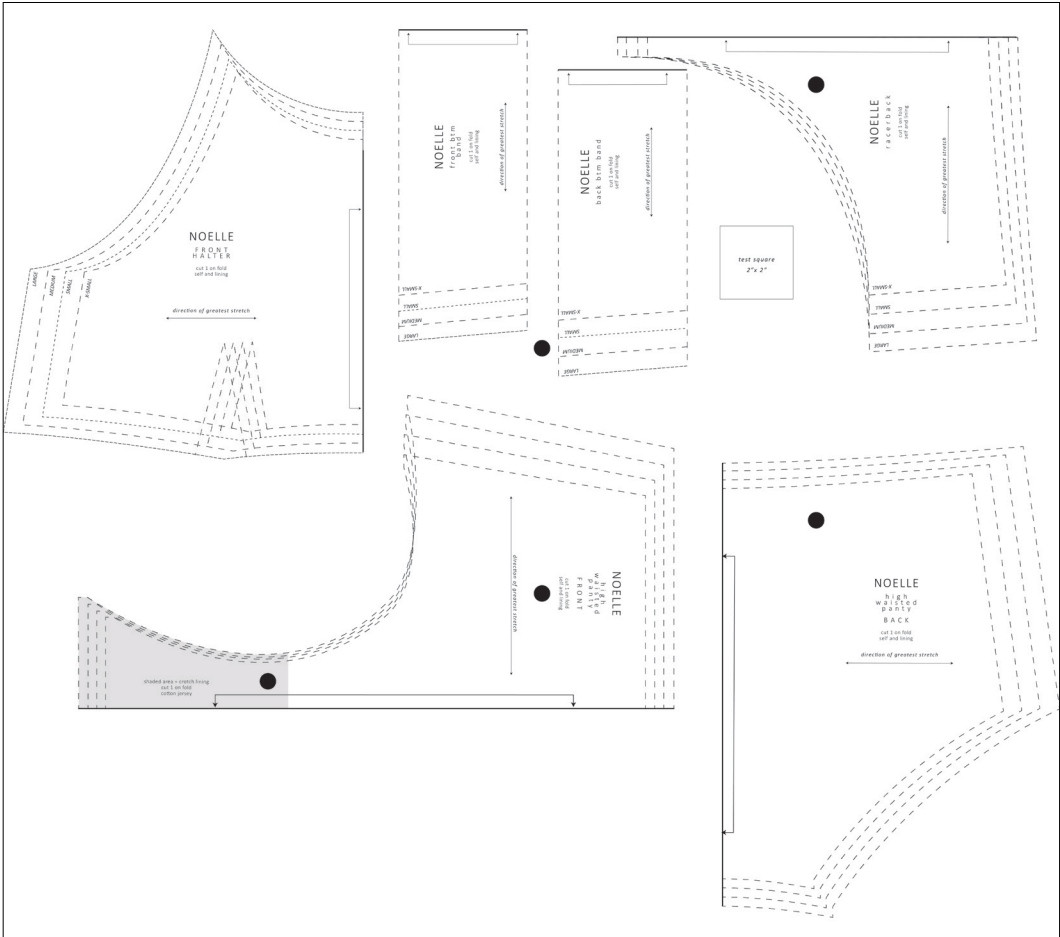
All seam allowances are 1/4"

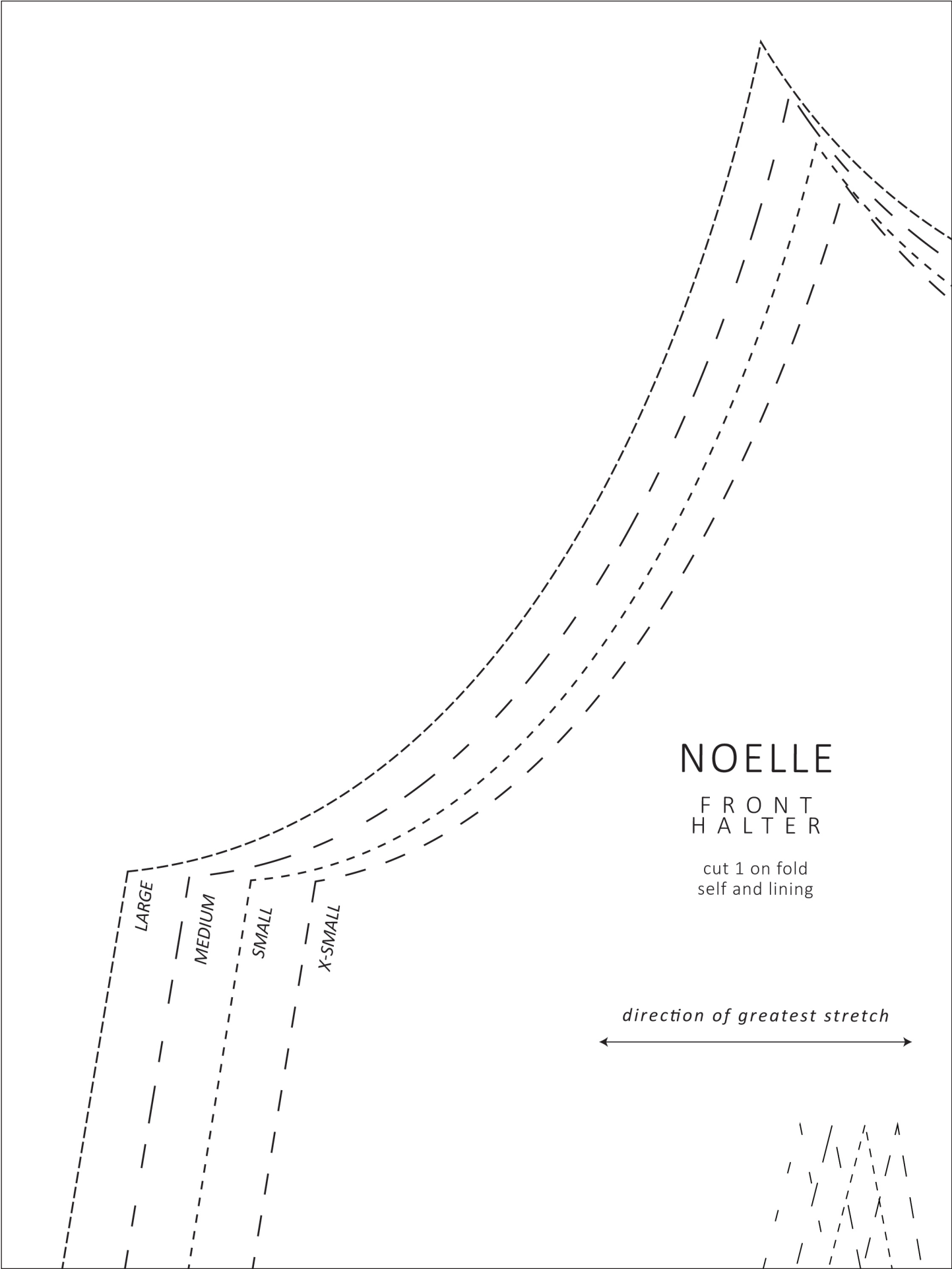
SUPPLIES:

- 1.5 yards stretch lace, lycra or mesh
- 1.5 yards lining fabric
- 3 yards 3/8" picot/plush elastic
- 1 yard 1/2" picot/plush elastic
- 1 yard 1/4" strap elastic
- Two 1/4" sliders
- One 5/8" or 3/4" ring
- Scrap of cotton jersey (for crotch lining)
- Sewing machine with a zigzag stitch
- Stretch/Ballpoint needle size 11, 12 or 14
- Polyester thread

BRALETTE				
	x-small	small	medium	large
full bust	28.5-30.5 in 72.5-77.5 cm	30.5-32.5 in 77.5-82.5 cm	32.5-34.5 in 82.5-87.5 cm	34.5-36.5 in 87.5-92.5 cm

PANTY				
	x-small	small	medium	large
natural waist	23-25 in 58.5-63.5 cm	25-27 in 63.5-68.5 cm	27-29 in 68.5-73.5 cm	29-31 in 73.5-78.5 cm
high hip	26-28 in 66-71 cm	28-30 in 71-76 cm	30-32 in 76-81 cm	32-34 in 81-86 cm
hip	32-34 in 81.25-86.5 cm	34-36 in 86.5-91.5 cm	36-38 in 91.5 - 96.5 cm	38-40 in 96.5-101.5 cm

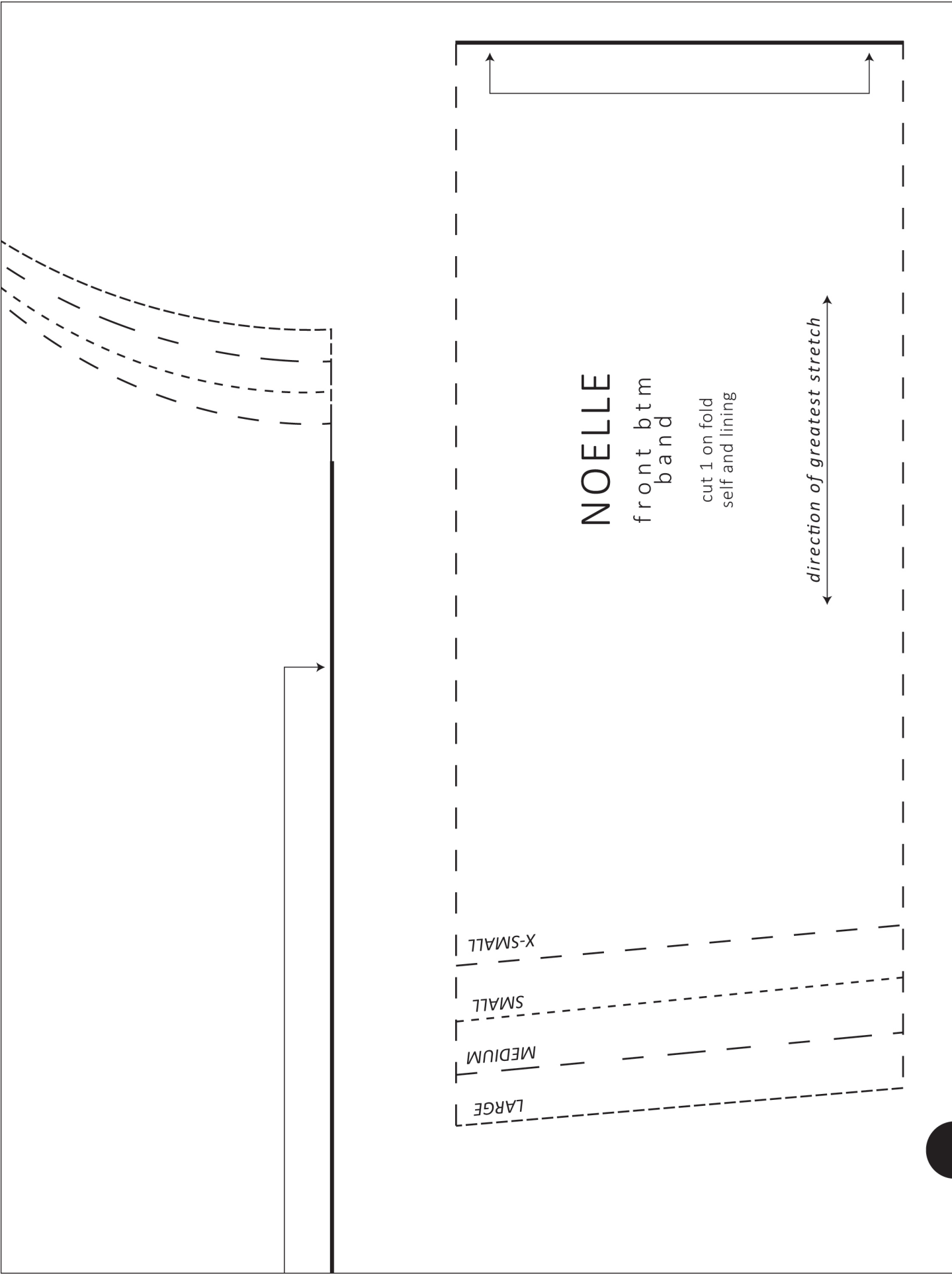


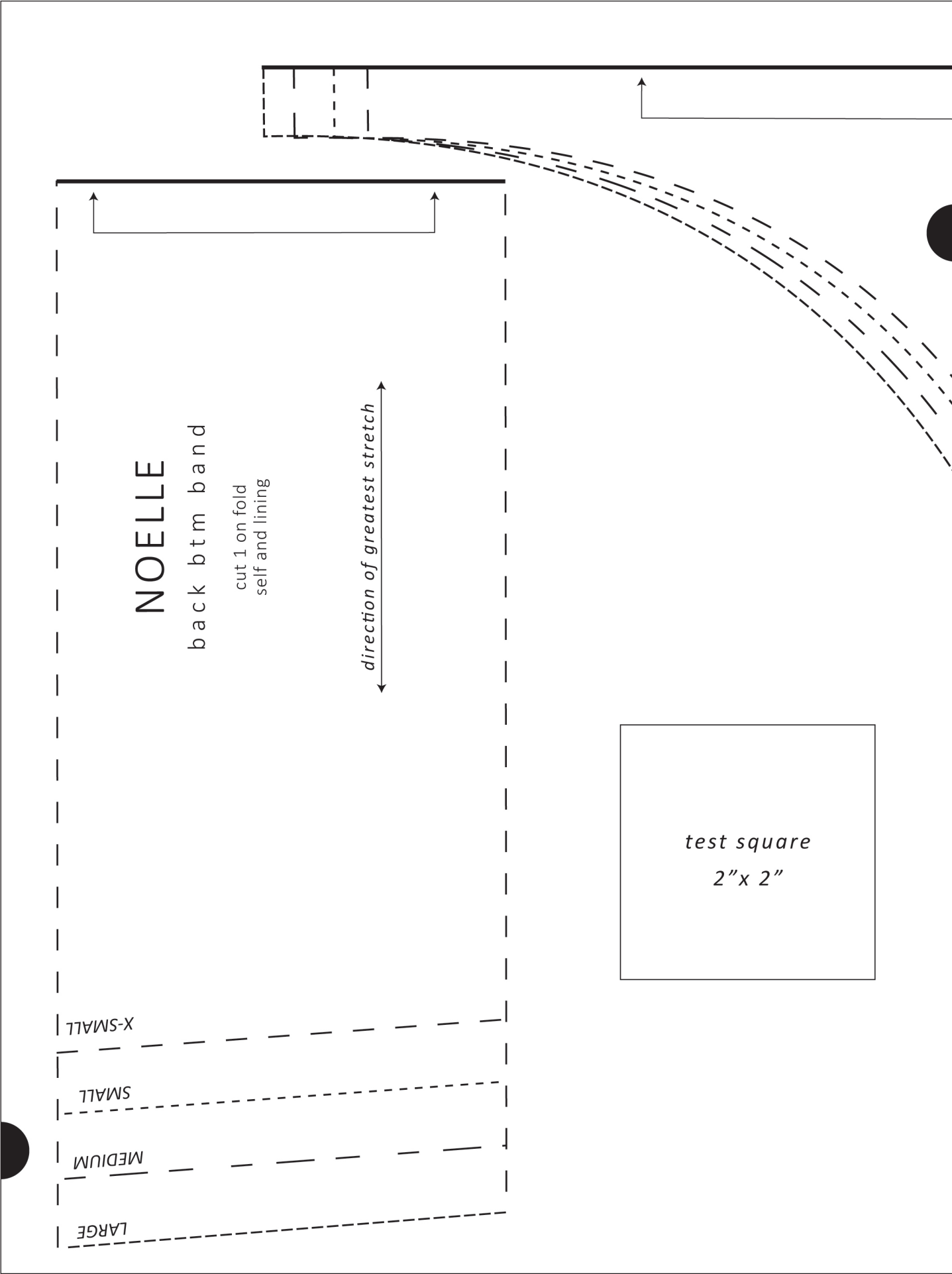


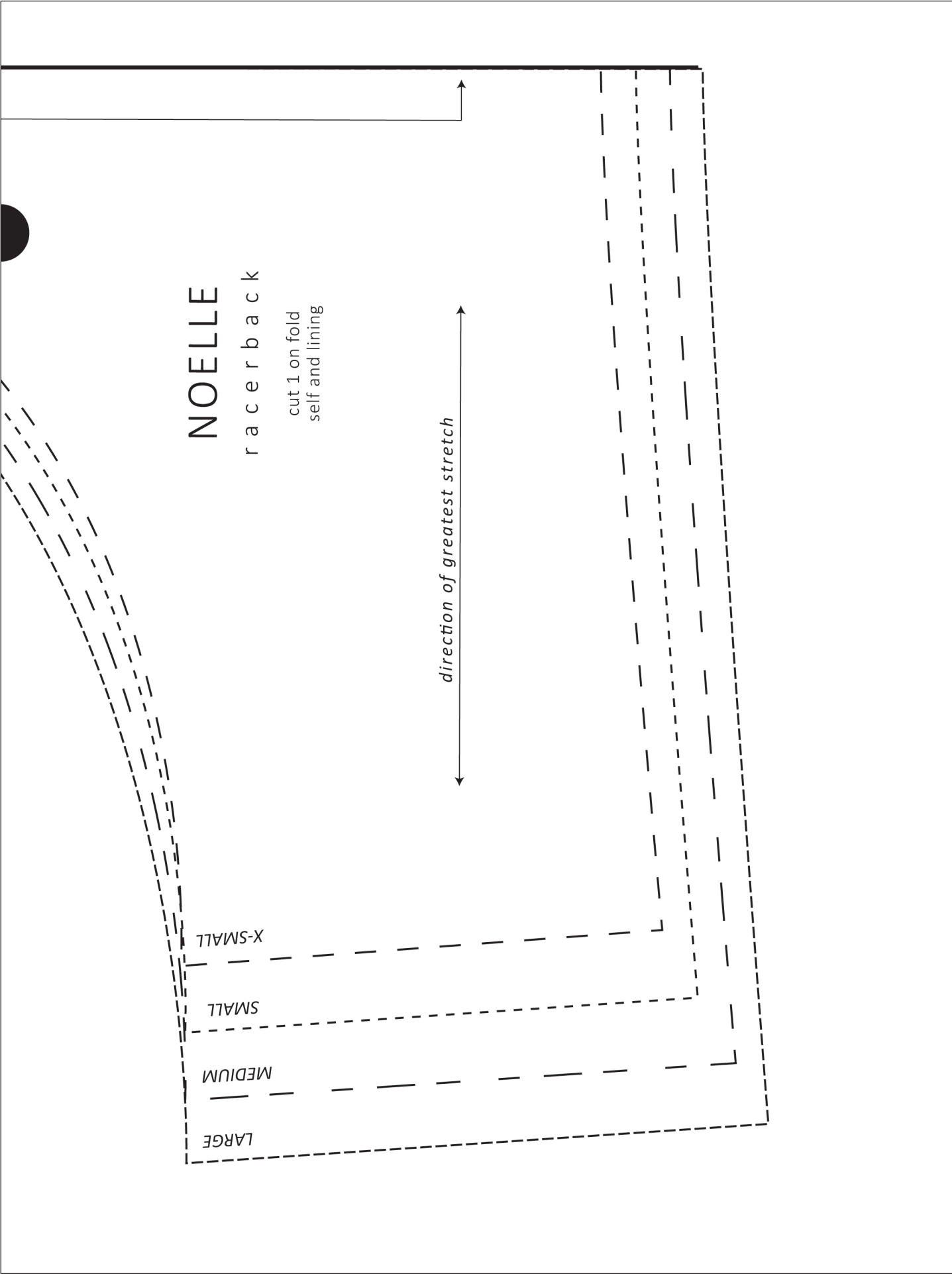
NOELLE
FRONT
HALTER

cut 1 on fold
self and lining

direction of greatest stretch







NOELLE

r a c e r b a c k

cut 1 on fold
self and lining

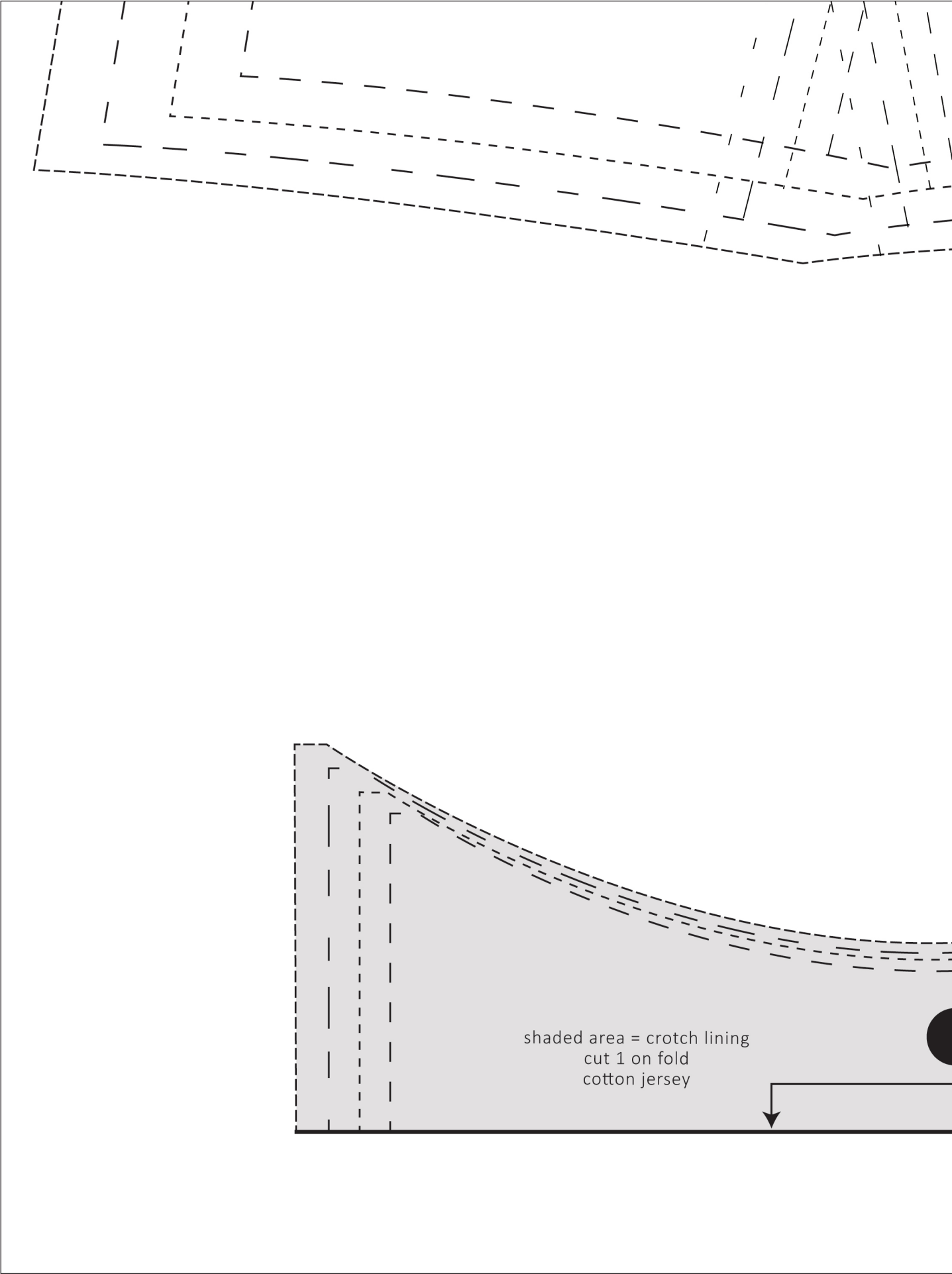
direction of greatest stretch

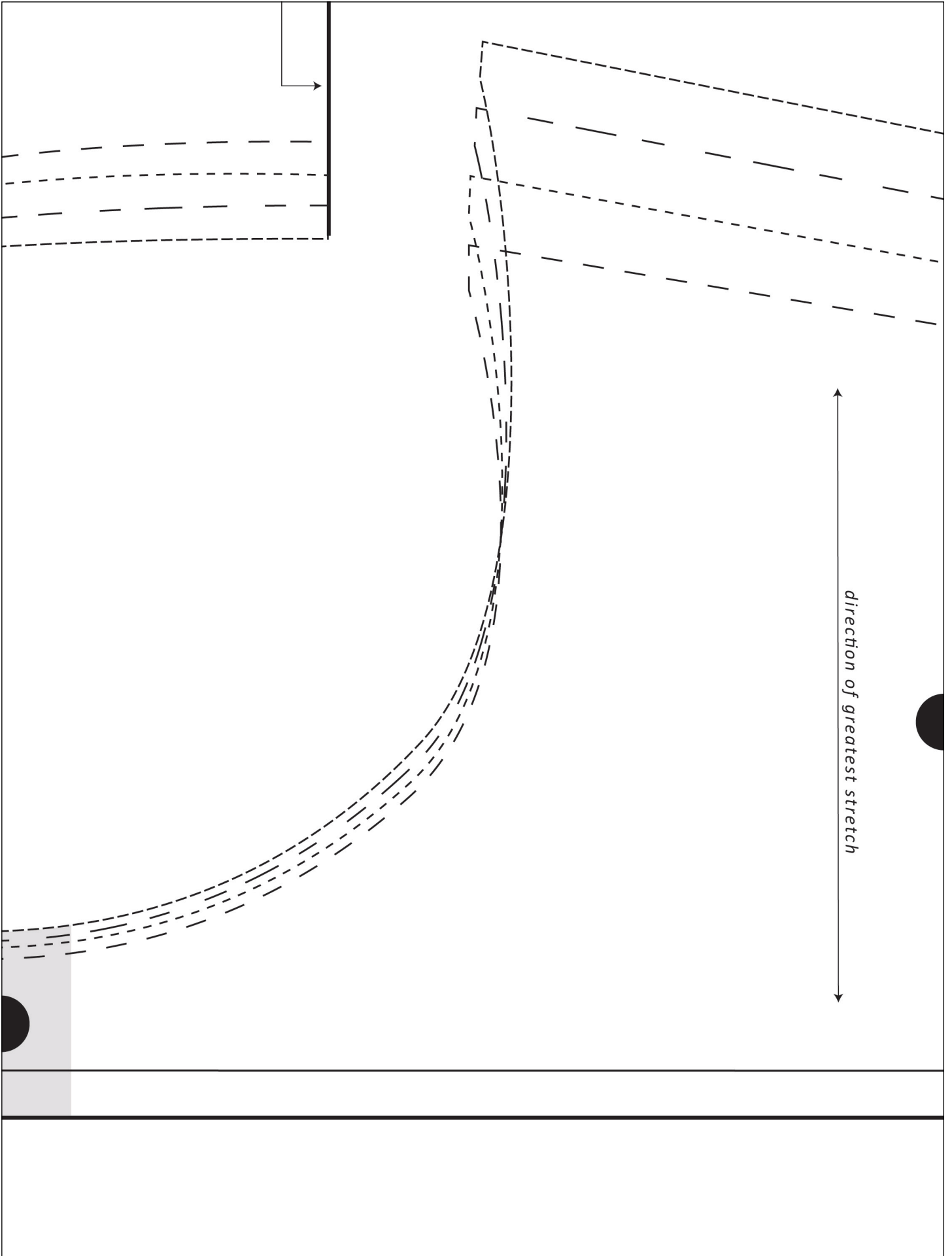
X-SMALL

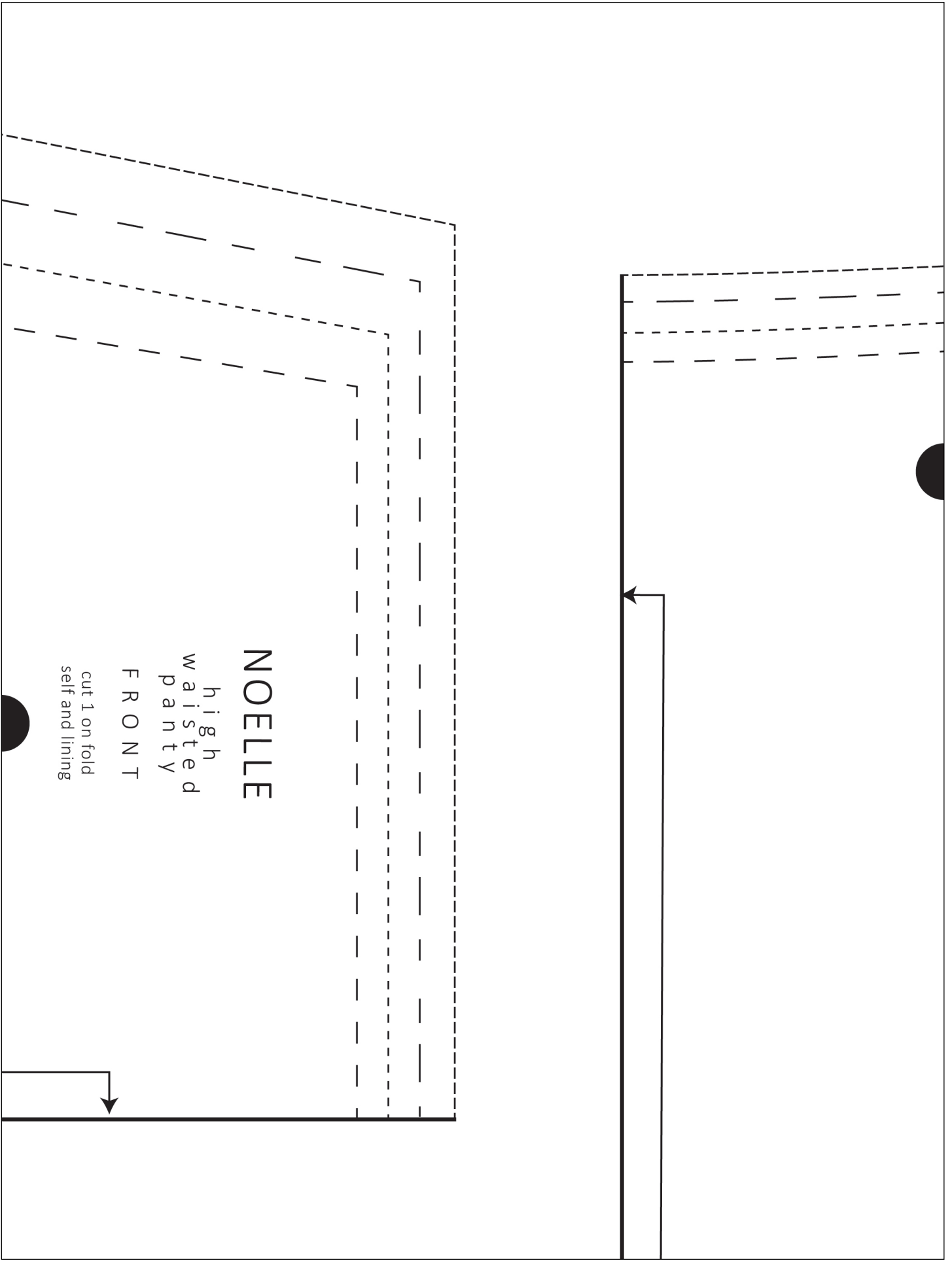
SMALL

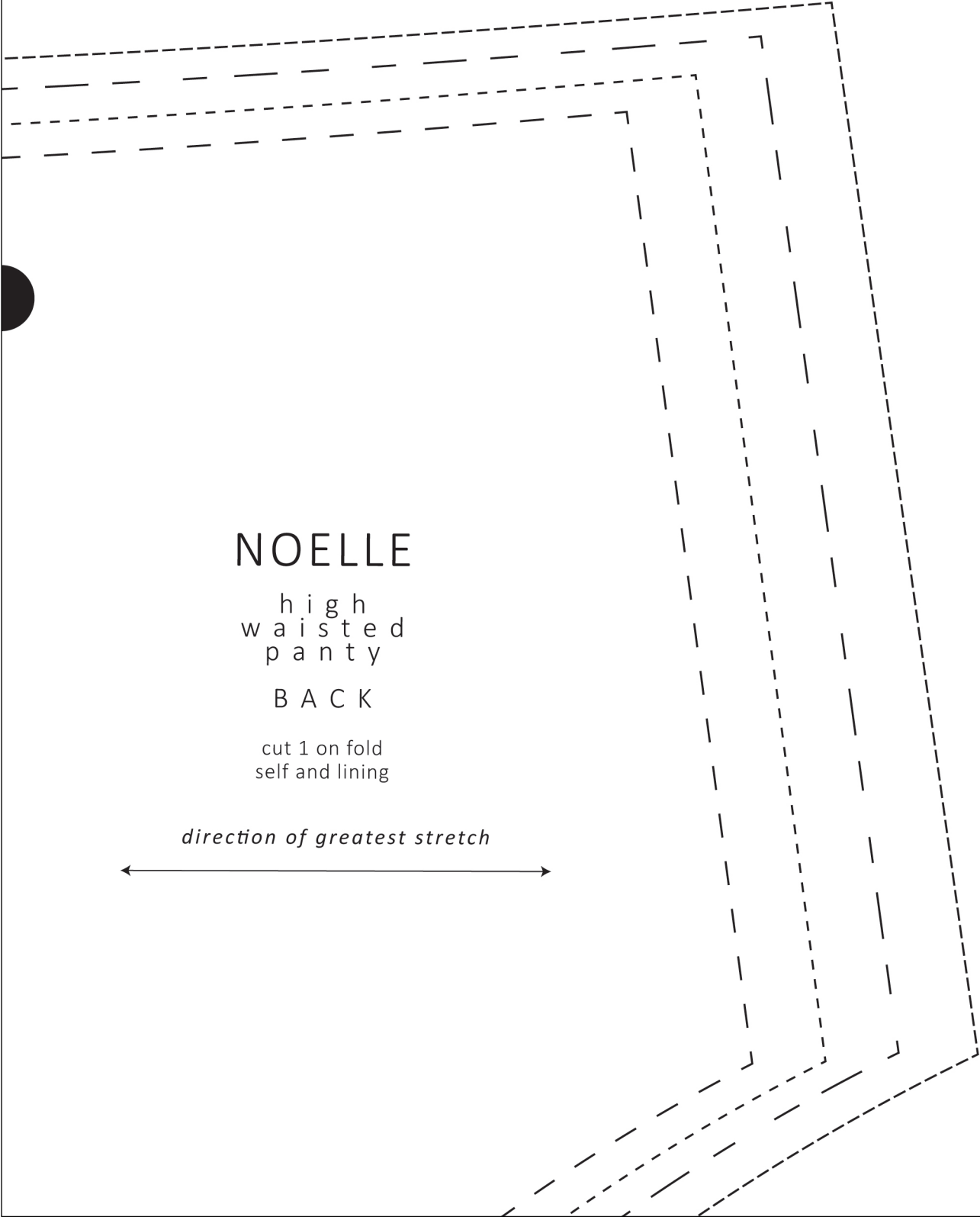
MEDIUM

LARGE









NOELLE

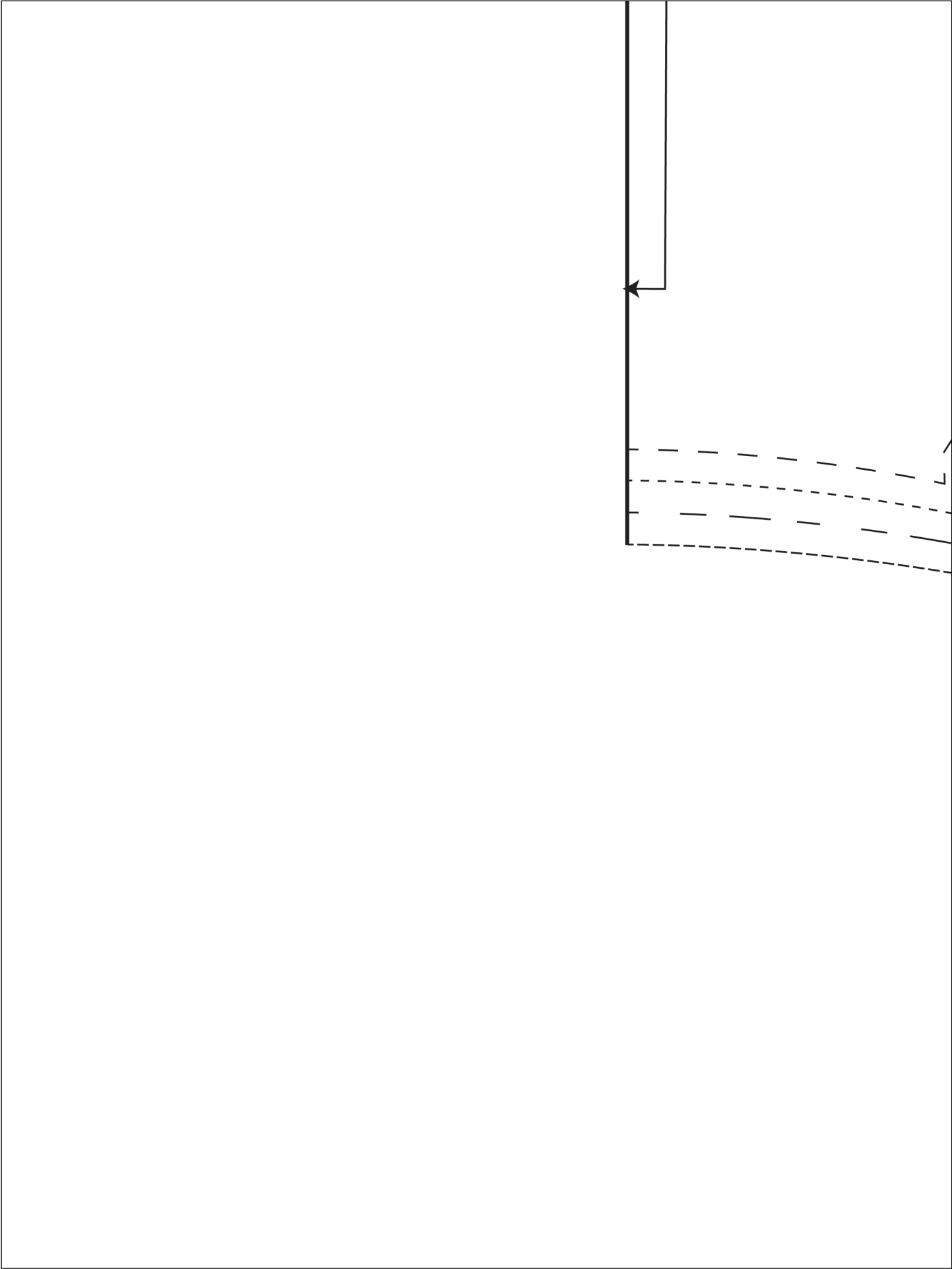
high
waisted
panty

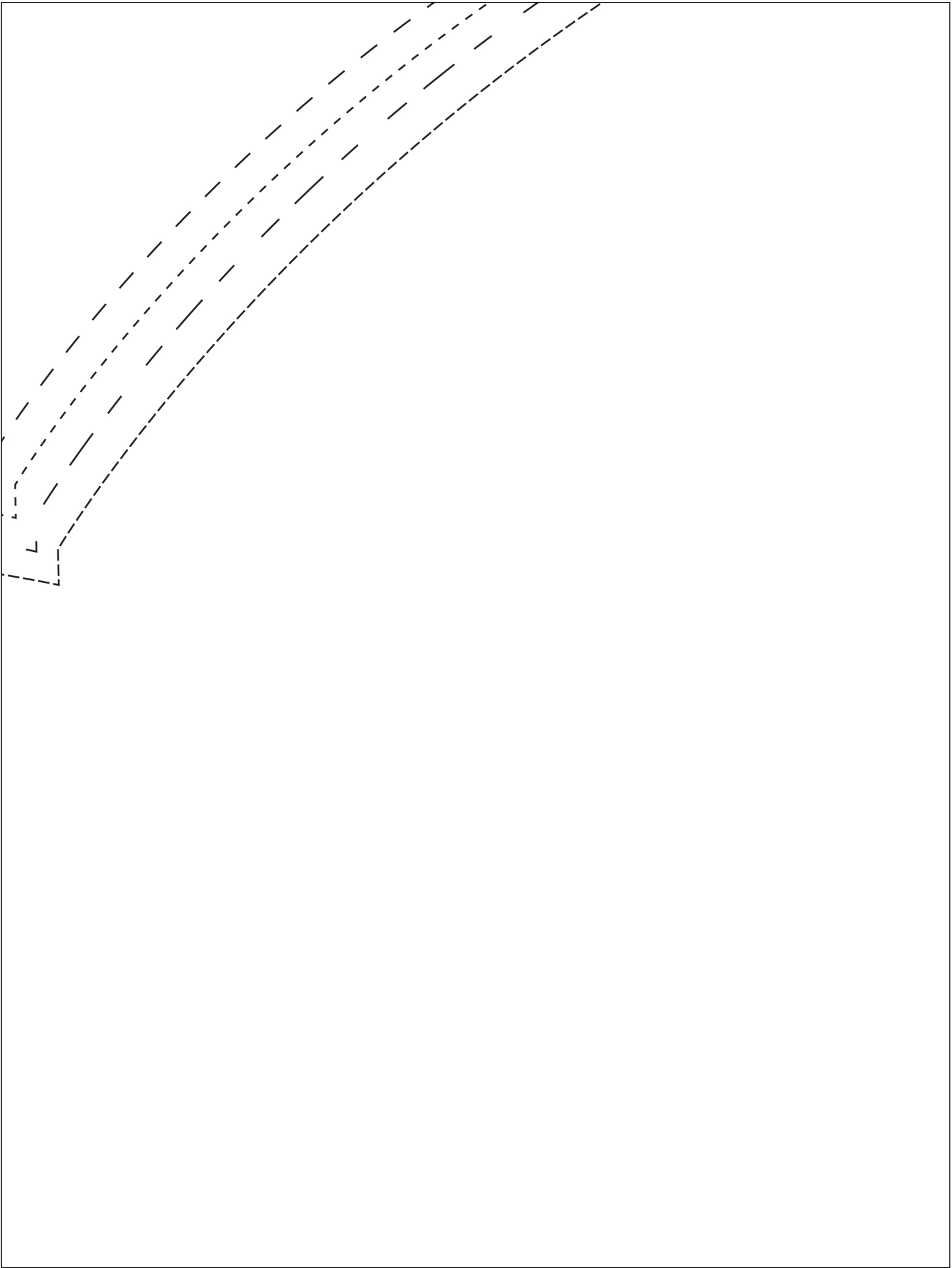
B A C K

cut 1 on fold
self and lining

direction of greatest stretch







READY TO START SEWING? LET'S GO!

BRA

STEP 1: With right sides together, sew bust darts by folding dart in half and pinning in place along dart legs. Sew from bottom edge to dart point. At dart point, sew off fabric and leave a long thread tail. Tie in a knot to secure. Be sure not to pull the knot tight against the fabric as it will cause puckering.

STEP 2: With right sides together, sew front halter (bodice) to racerback at side seam using a straight stitch. Sew front bottom band to back bottom band at side seam as well using a straight stitch. If using a fabric that doesn't fray (i.e. stretch mesh or stretch lace), you can leave seam allowances raw. You can also serge seam allowances if you have a serger.

STEP 3: Attach elastic at neckline and underarm. It doesn't matter which order you attach, but I prefer sewing at neckline first, then underarm.

- With right side of fabric facing up, place 3/8" elastic on top so that it extends past fabric's edge 1/8". The picot edge should face inward (towards the fabric) and the plush side should face up.
- Sew along the picot edge with a zigzag stitch. Stitch width and length will vary from machine to machine, but a good rule of thumb is stitch width should not exceed half the width of the elastic. Try to stitch as close as possible to picot without going off the edge.
- After you've sewn the first pass, flip elastic to the wrong side and sew the edge opposite the one you just sewed using a zigzag stitch.

Elastic comes in different widths, quality and amounts of stretch. Some calculate the amount to pull (i.e. reducing the length by 15%), but most of the time, I set elastic flat, meaning I do not pull elastic while sewing.

STEP 4: Sew bodice (front halter + racerback) to bottom band using a short zigzag stitch. Stitch width and length will vary according to machine. To finish seam allowance:

- Push seam allowances down
- With wrong side of bra facing out, cover seam allowances with 3/8" picot/plush elastic and sew using a wide zigzag
- Overlap elastic 1/2" at ends and trim close to stitching

STEP 5: Attach 1/2" elastic at bottom band the same way as it was done in step 3.

STEP 6: Loop ring around top racer back. Fold back and secure by sewing back and forth using a short straight stitch (approximately 2mm stitch length).

STEP 7: Make and attach straps:

- Cut two strips of strap elastic, each 15" long.
 - Feed one end of strap up through the bottom of one slider, then over the center bar and down through the other side. It should look like a belt buckle, with one short end and one long end.
 - Fold the short side down and secure by sewing back and forth using a short straight stitch (approximately 2mm stitch length). Trim close to stitching.
 - Loop through ring at top racer back.
 - Weave long side up and over center bar of the slider just like in step 2.
 - Overlap strap and strap point $\frac{1}{2}$ " and secure by sewing back and forth using a short straight stitch (approximately 2 mm stitch length). To prevent straps from shifting during sewing, use a temporary spray adhesive such as Odif's.
-

UNDIE

STEP 1: Sew front panty, back panty and crotch lining together at crotch seam. Front and back panty should be right sides together, and right side of crotch lining should face wrong side of back panty. Use a straight stitch. After sewing, push crotch lining forward. You can either leave front edge raw or finish with a serge/serger.

STEP 2: With right sides together, sew front and back panty at side seams using a straight stitch.

STEP 3: Attach elastic at leg opening and waist using same method in step 2 of bra.
secure.

**That's it! Don't forget to post your
Noelle to Instagram!**

#bramakingwithmadalynne

@mmadalynne

I can't wait to see what you made!