

Peppermint



JUMPSUIT SEWING PATTERN

FEEL FREE TO HACK THIS PATTERN,
ADD TO THIS PATTERN, LOVE THIS PATTERN
AND TO MAKE IT OVER & OVER
BUT PLEASE REMEMBER THAT IT'S
FOR PERSONAL USE ONLY

HAPPY SEWING!

© Emily Hundt

PATTERN SIZE KEY

— — — — —	SIZE A
- - - - -	SIZE B
.....	SIZE C
- . - . - . - . - . - .	SIZE D
.....	SIZE E
- - - - -	SIZE F
- - - - -	SIZE G
.....	SIZE H
—————	SIZE J
- - - - -	SIZE K

TEST SQUARE



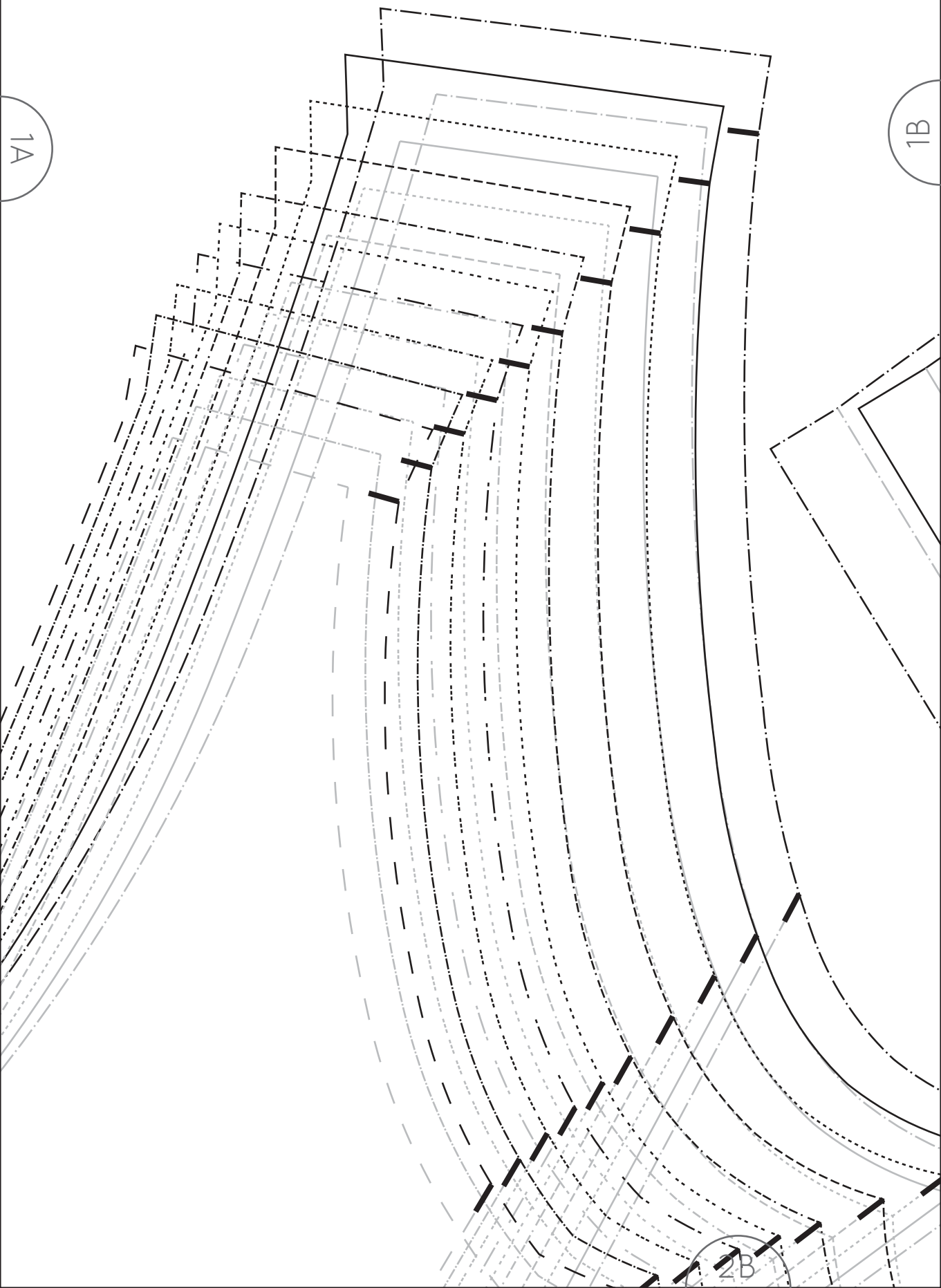
5cm x 5cm

1A

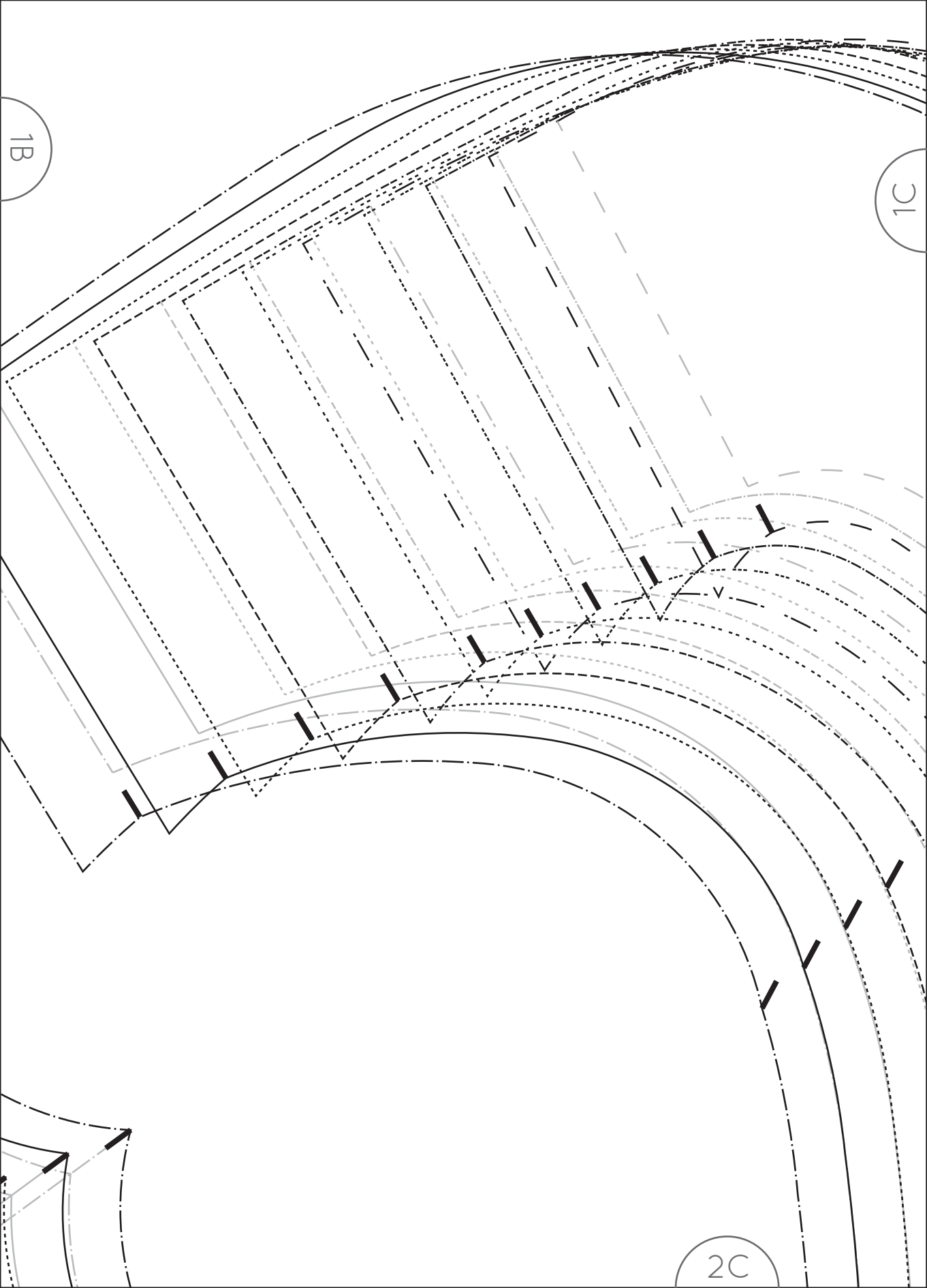
2A

1A

1B



2B



1C

1D

CUT 1 ON FOLD

FRONT FACING

JUMPSUIT

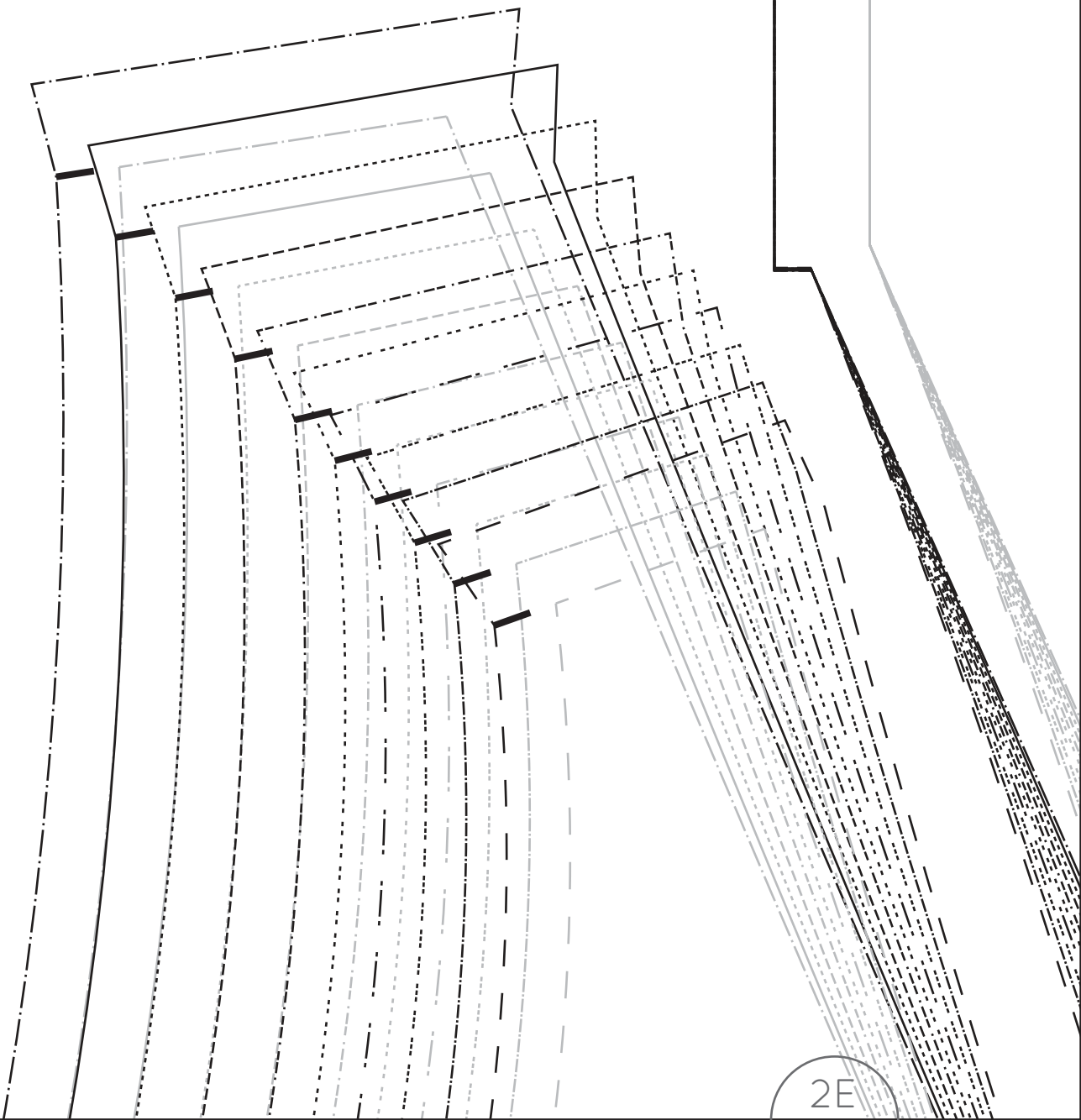
Place on fold



2D

1D

1E



2E

1E

1F

CUT 1 PAIR

BACK FACING

JUMPSUIT

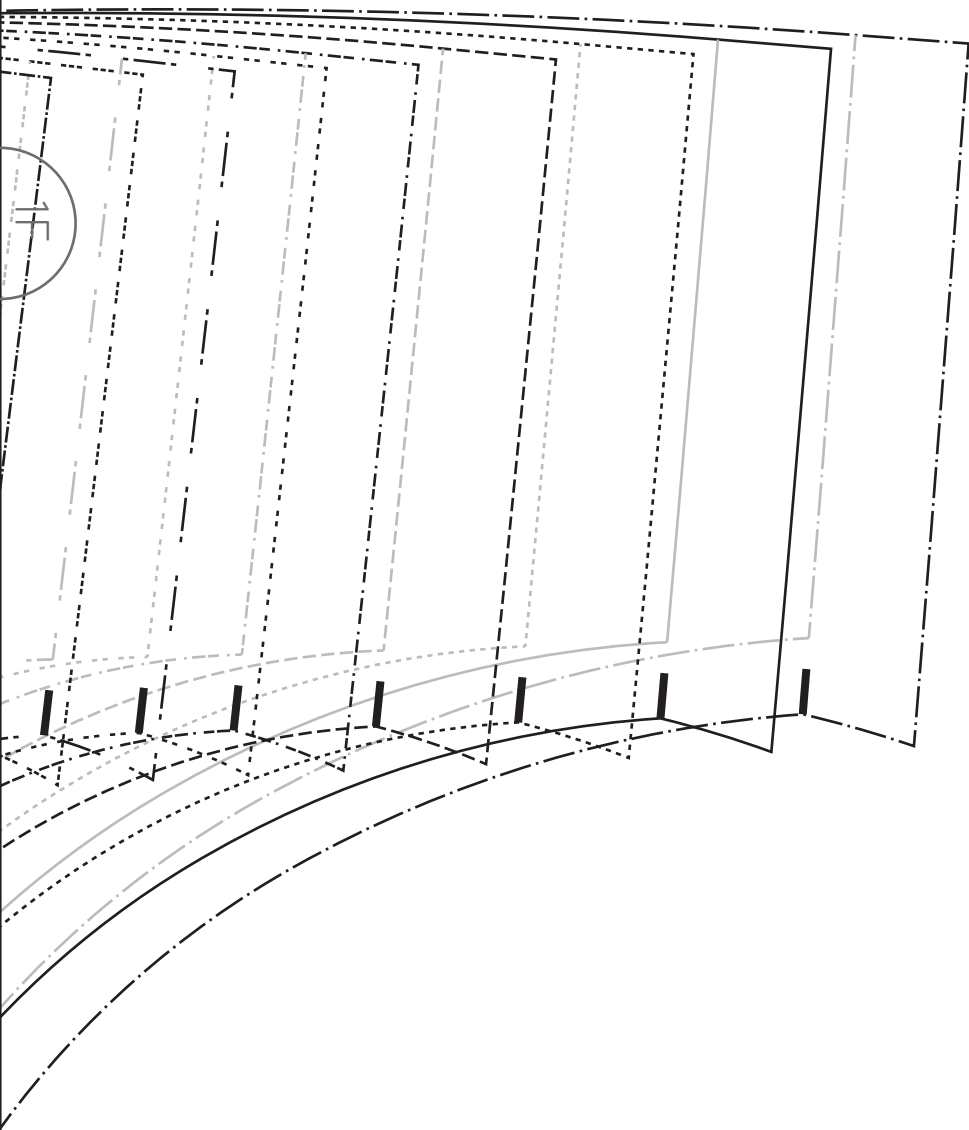


Peppermint

Grainline

2F







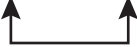






Peppermint
in the
folds
WORKSHEAVEN • SEWING PATTERNS
HANDMADE IN SWEDEN

W

PATTERN SYMBOL KEY

-  notch
-  double notch
(indicates the back of the pattern piece)
-  drill hole
-  cutting line
-  stitch line
-  grainline
-  place pattern on fold
-  lengthen / shorten line
-  direction to fold pleat

SHARE YOUR MAKES



#peppermintsewandtell

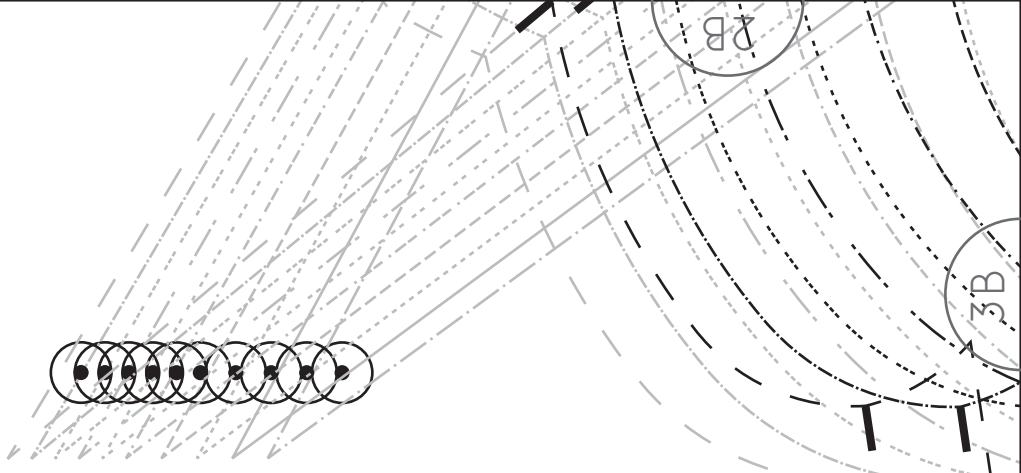
Tag us
@inthefolds
@peppermintmagazine

2A

3A

4A

3A

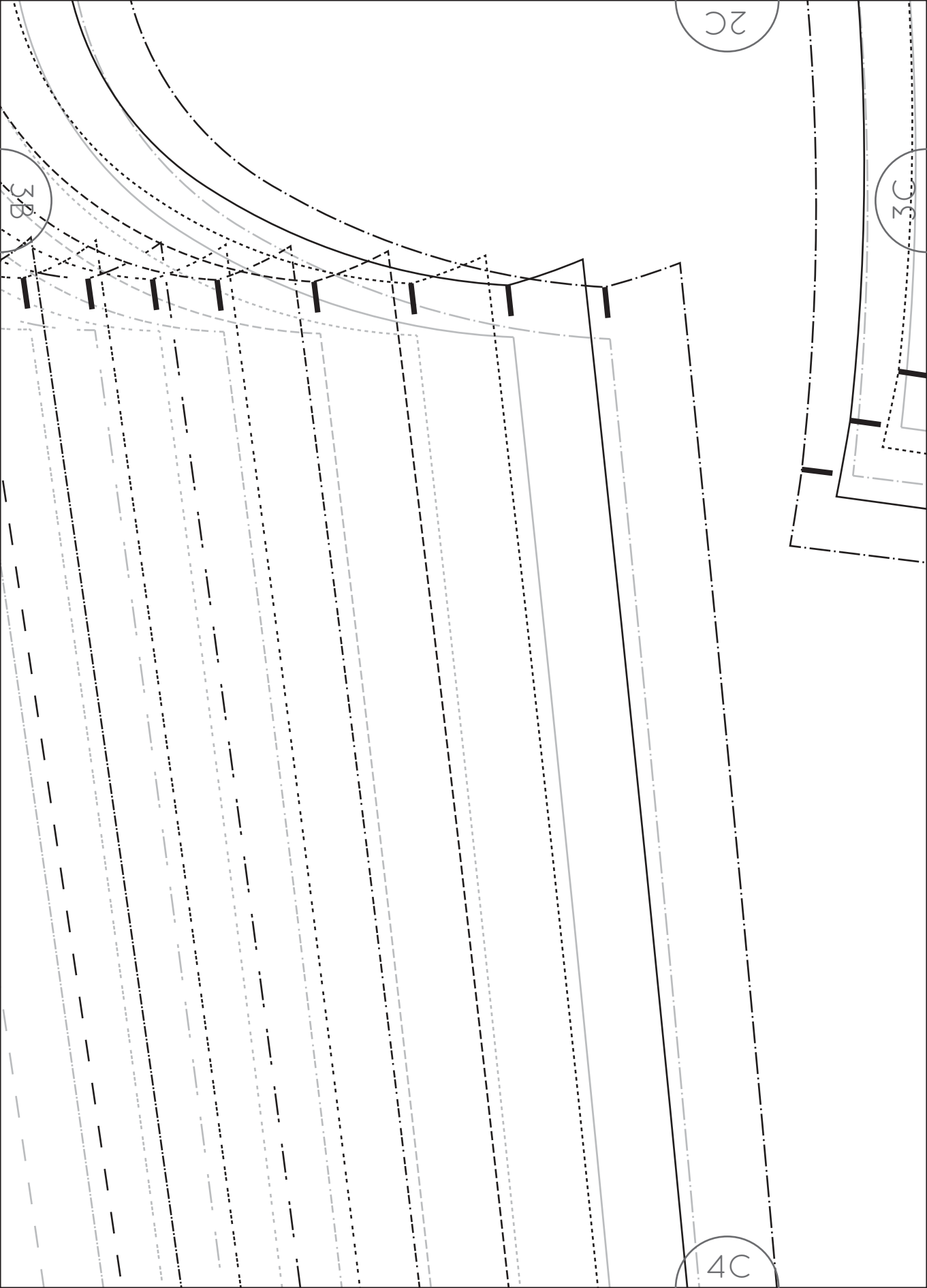


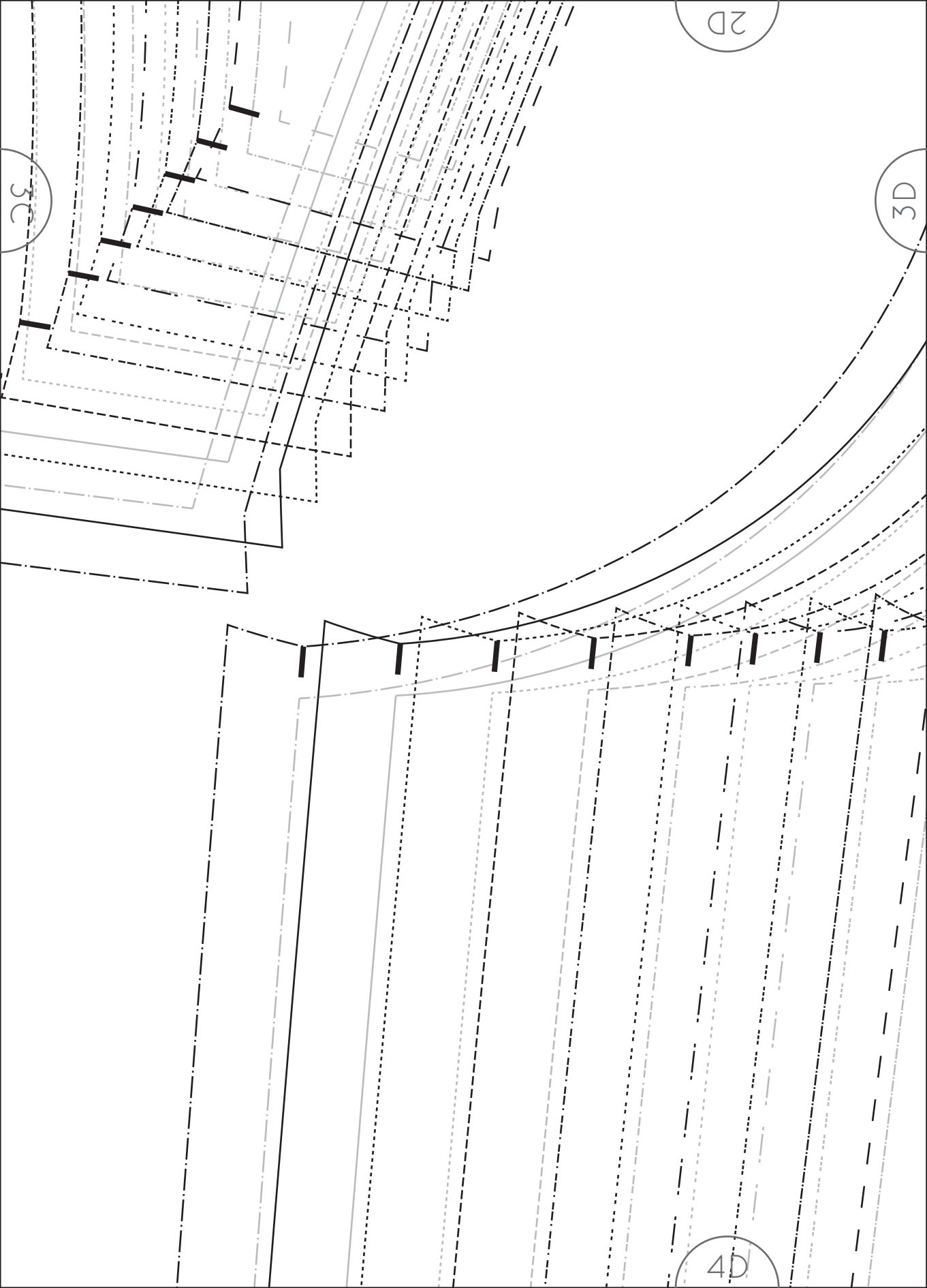
2B

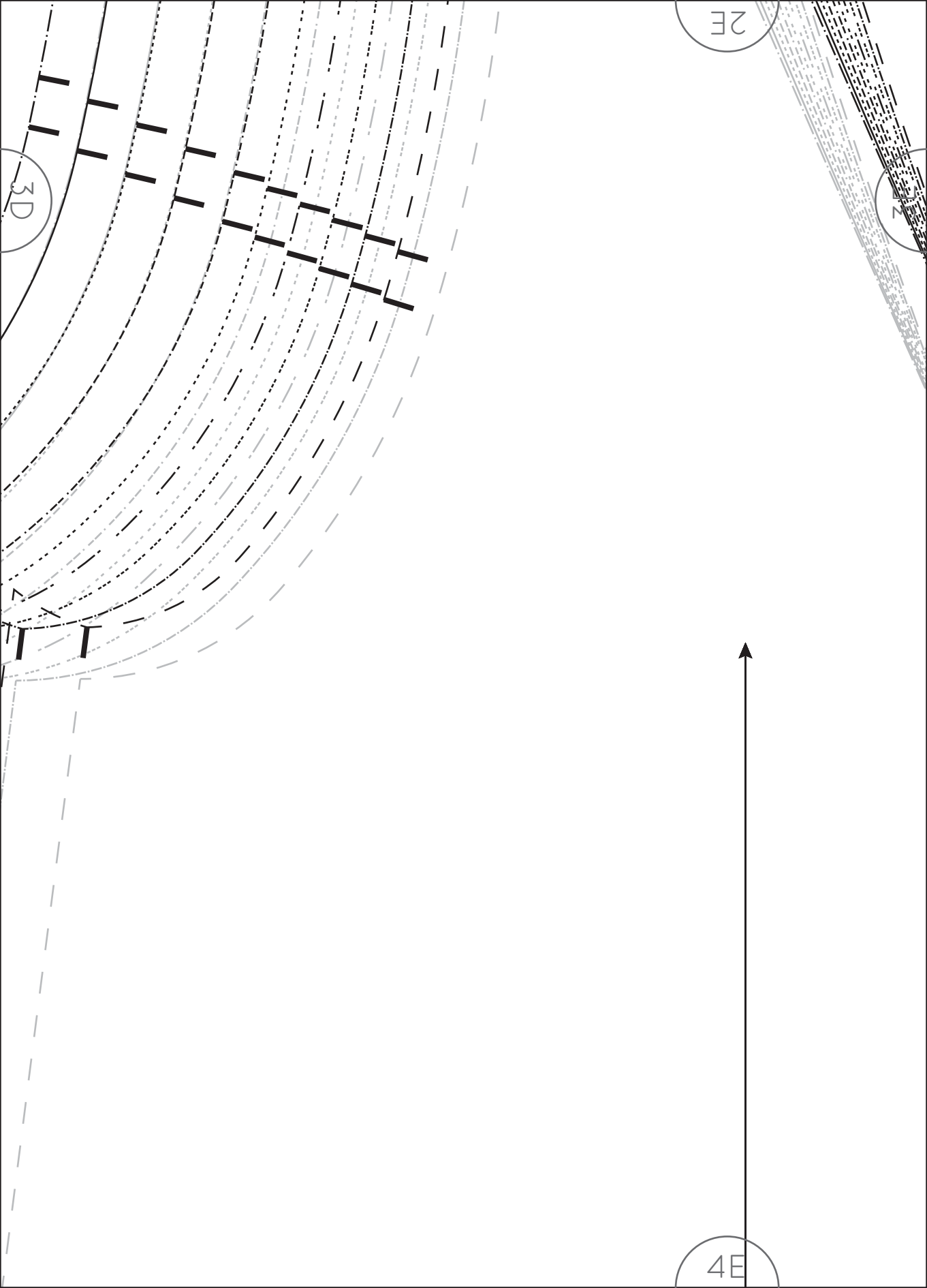
3B

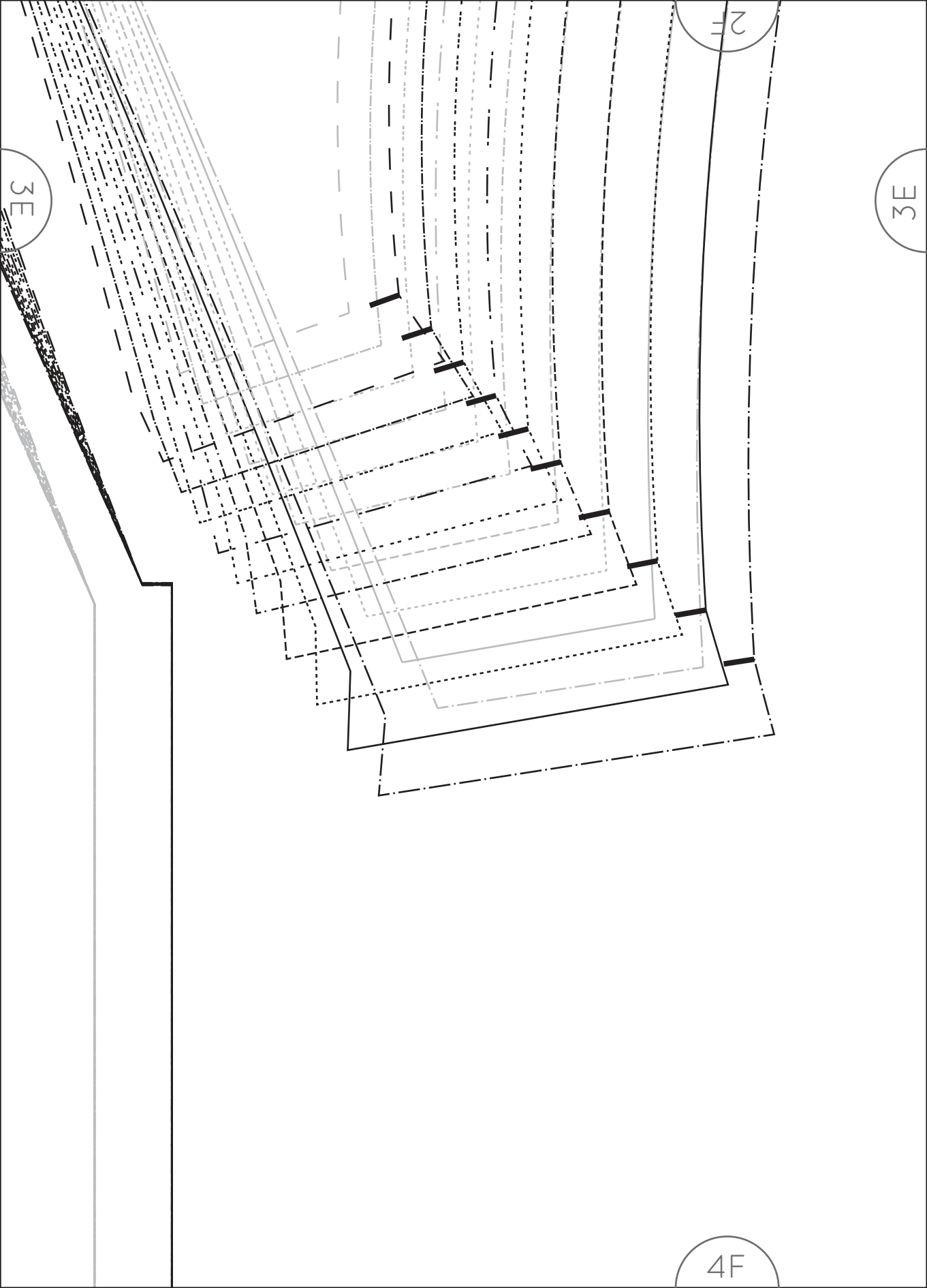


4B









2G

JUMPSUIT

WAIST SASH - PART A

CUT 1 ON FOLD

4G

3E

4A

5A

6A

4B

5B

LENGTHEN / SHORTEN LINE

Peppermint



JUMPSUIT

FRONT

CUT 1 PAIR

6B

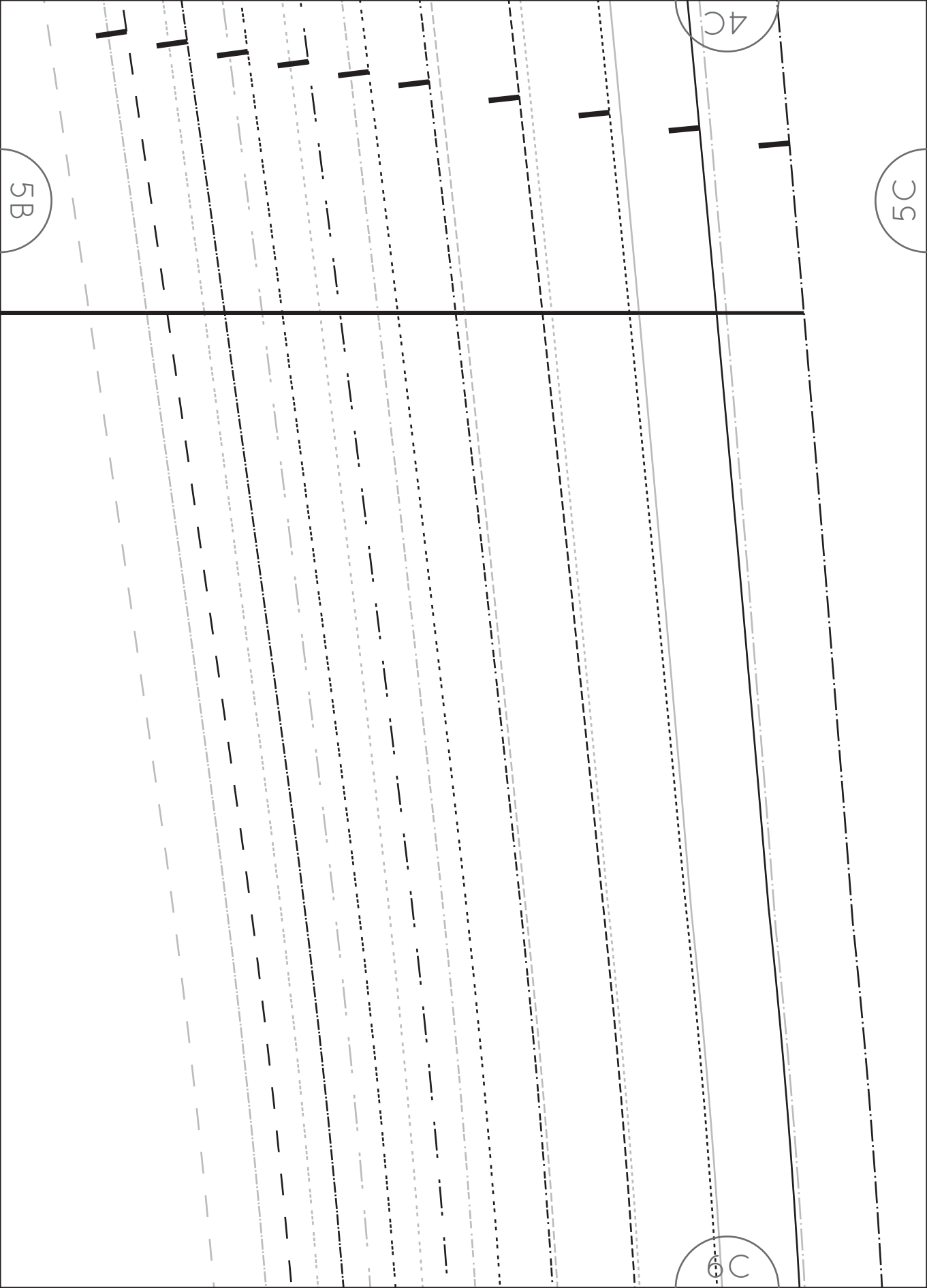
5A

5C

4C

5C

5B



5C

Handwriting practice section 5C. It features a series of slanted lines: a solid top line, a dashed middle line, and a solid bottom line. A vertical solid line divides the section into two halves. On the left side, there are seven short vertical bars, each positioned between the dashed middle line and the solid bottom line. On the right side, there are seven short vertical bars, each positioned between the solid top line and the dashed middle line.

5D

5D

Handwriting practice section 6D. It features a series of slanted lines: a solid top line, a dashed middle line, and a solid bottom line. A vertical solid line divides the section into two halves. On the left side, there are seven short vertical bars, each positioned between the dashed middle line and the solid bottom line. On the right side, there are seven short vertical bars, each positioned between the solid top line and the dashed middle line.

6D

4E

5E

5D

LENGTHEN / SHORTEN LINE

Peppermint



JUMPSUIT

BACK

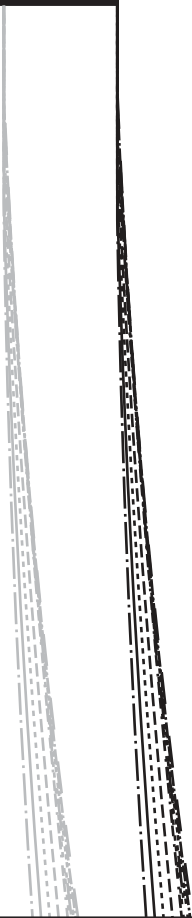
6E

4F

5F

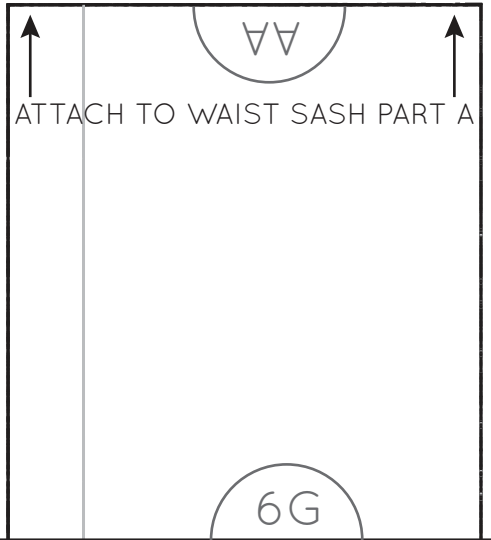
6F

5E

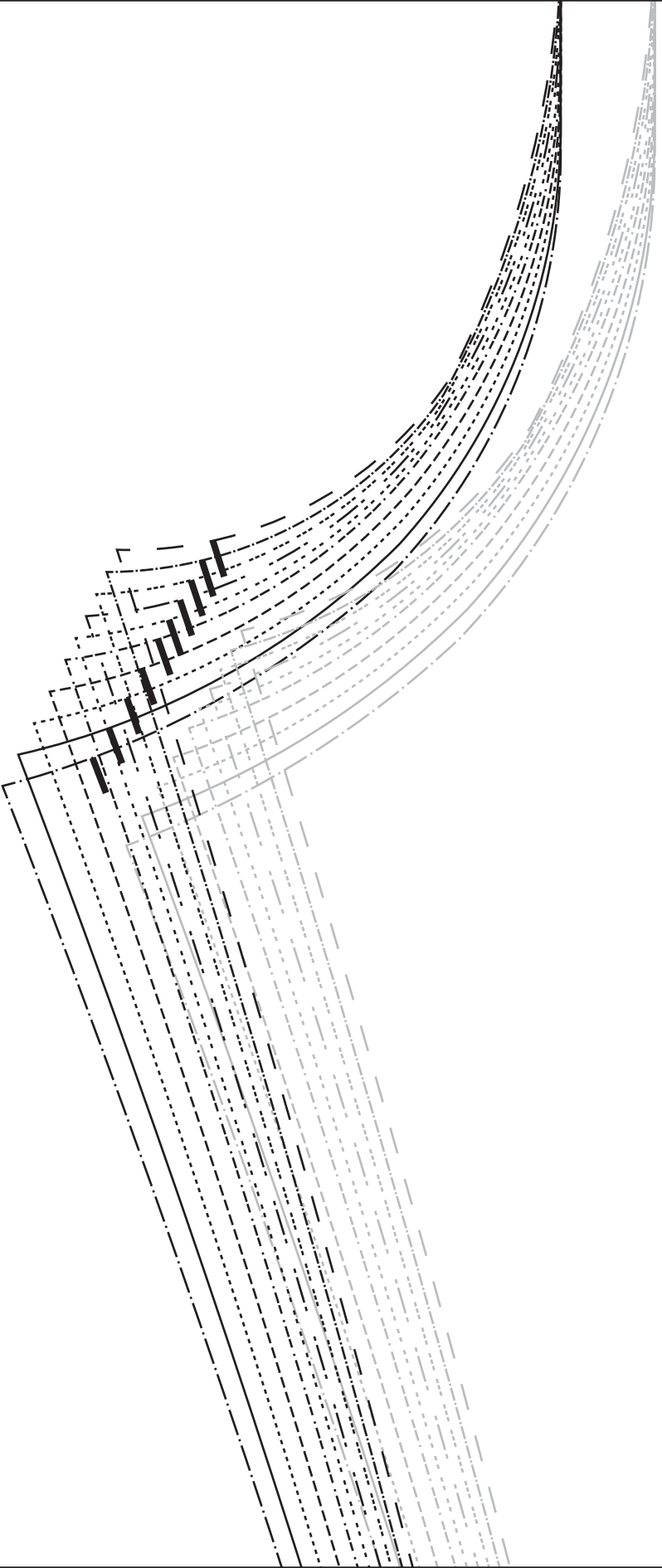


5F

Place on fold



4G



6A

7A

8A

7A

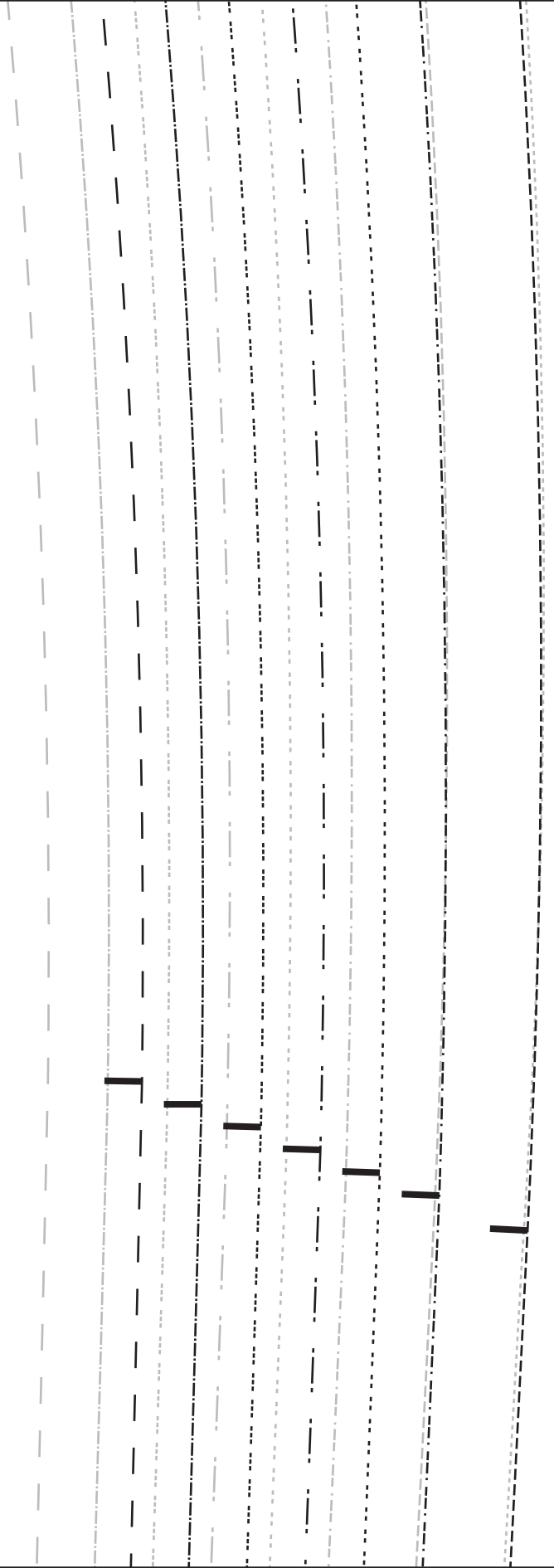
Grainline

6B

7B

8B

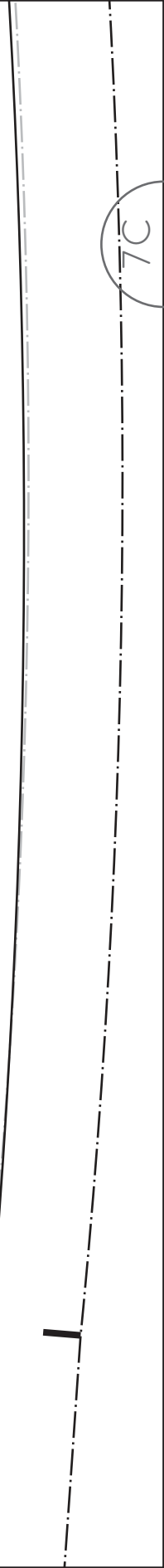
7B



8C

8C

7C



7C

6D

7D

8D

CUT 1 PAIR

6E

Grainline

7E

8E

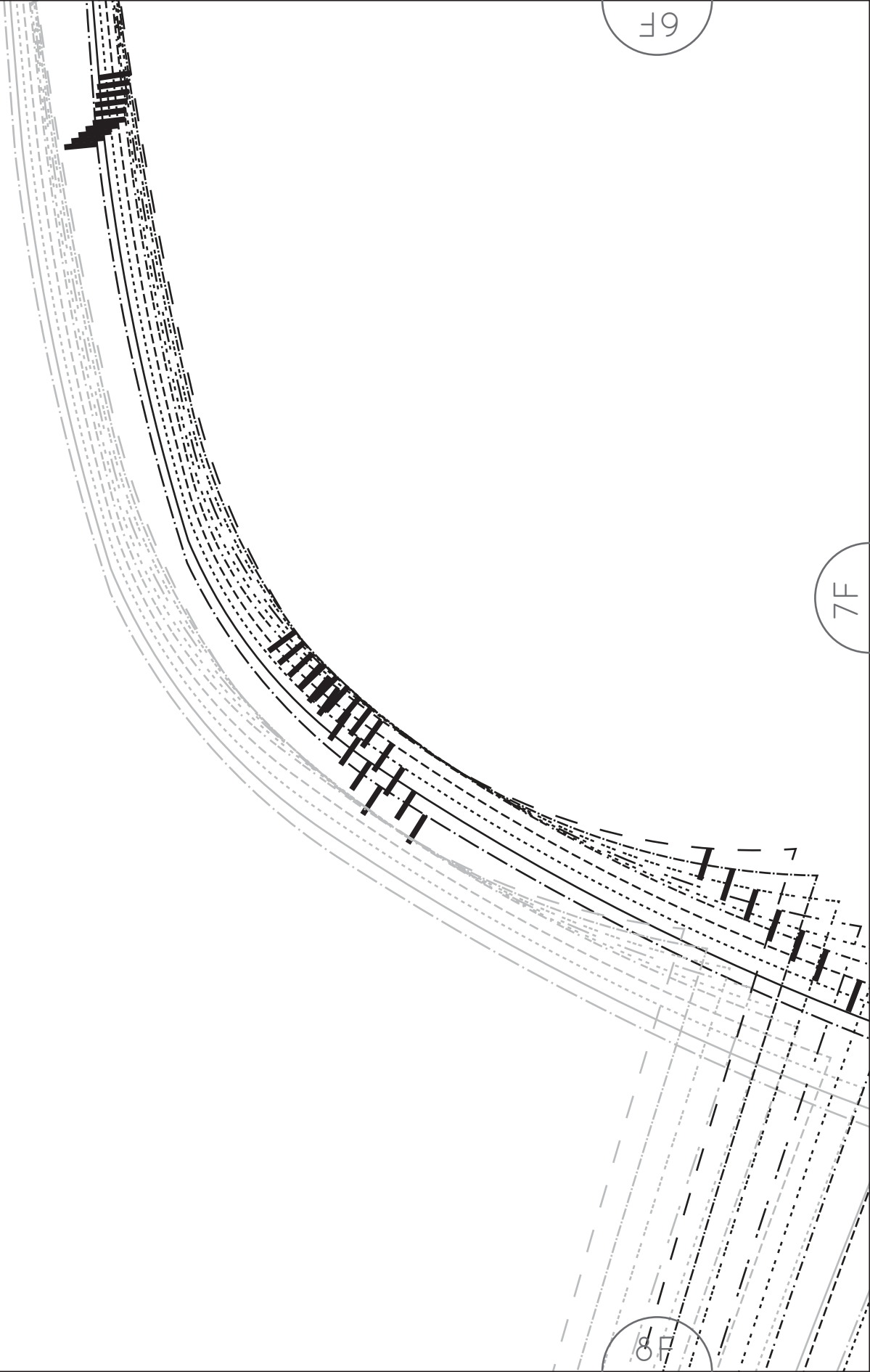
7D

6F

7F

8F

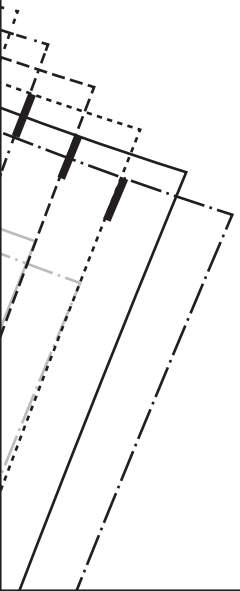
7E



WAIST SASH - PART B

Pla

7F



8A

9A

10A

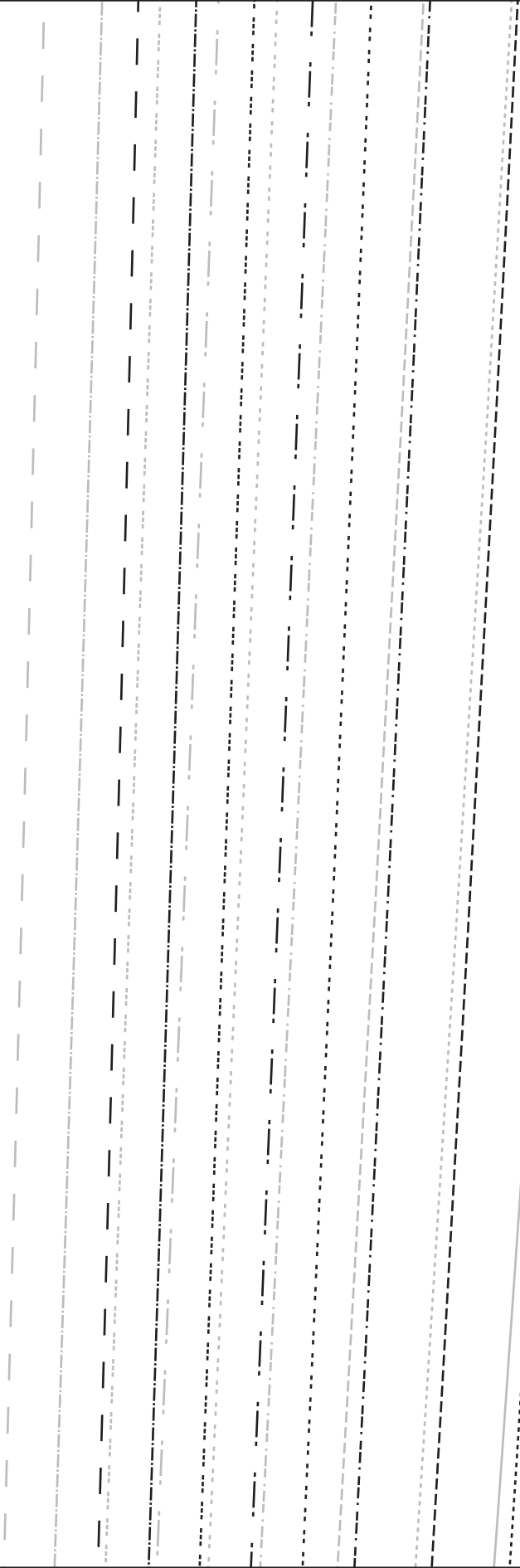
9A

8B

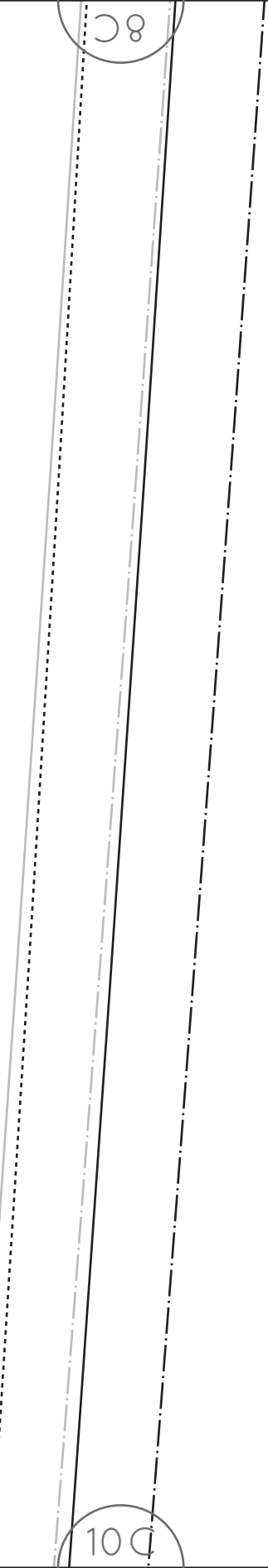
9B

10B

9B



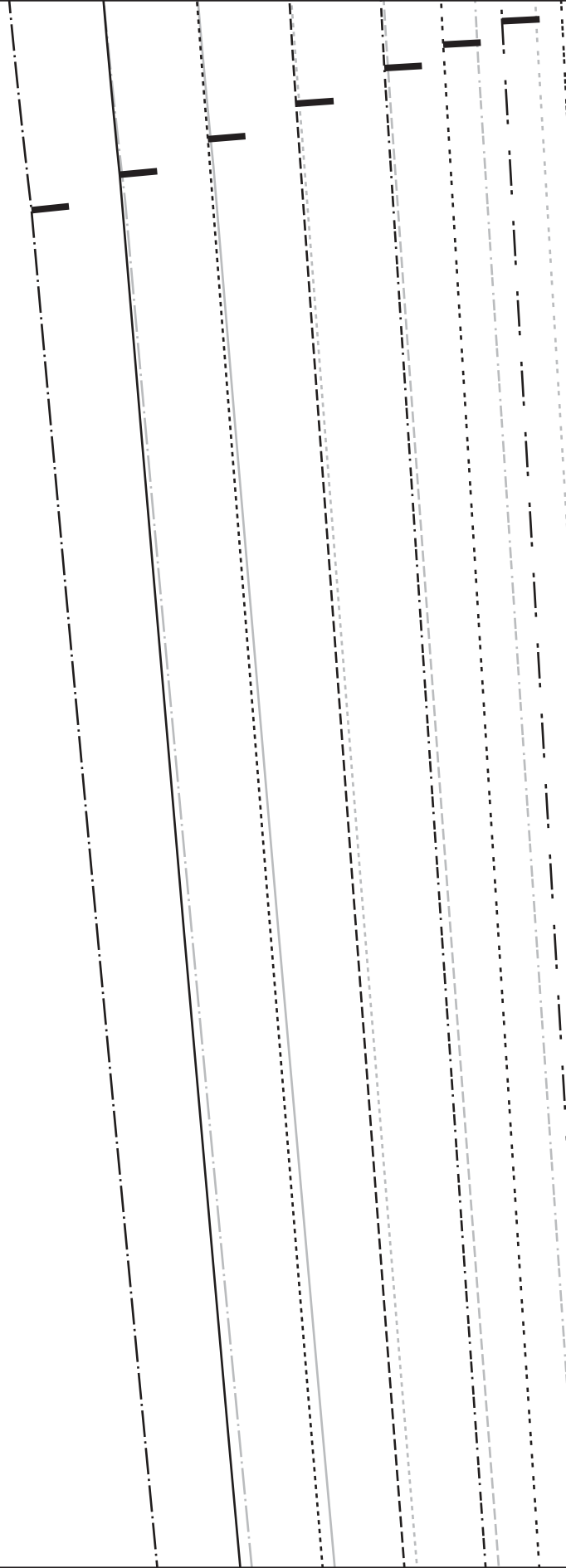
8C



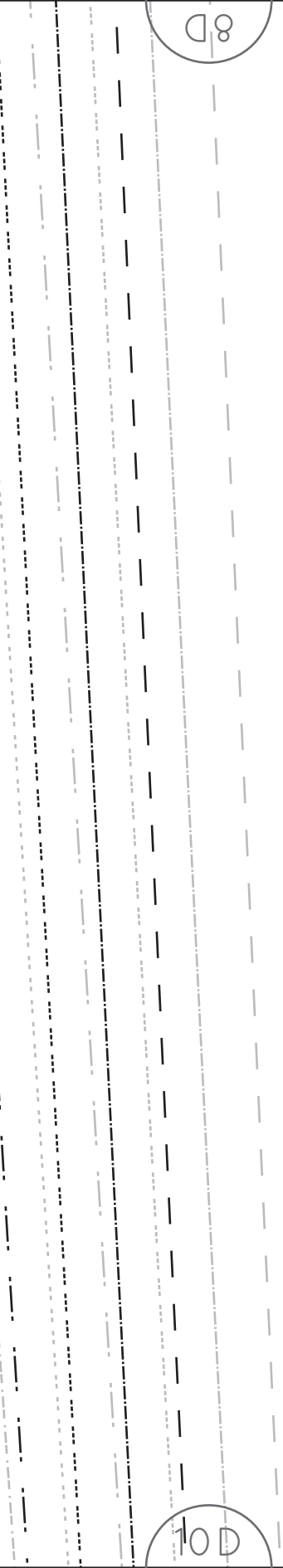
9C

10C

9C



8D



9D

10D

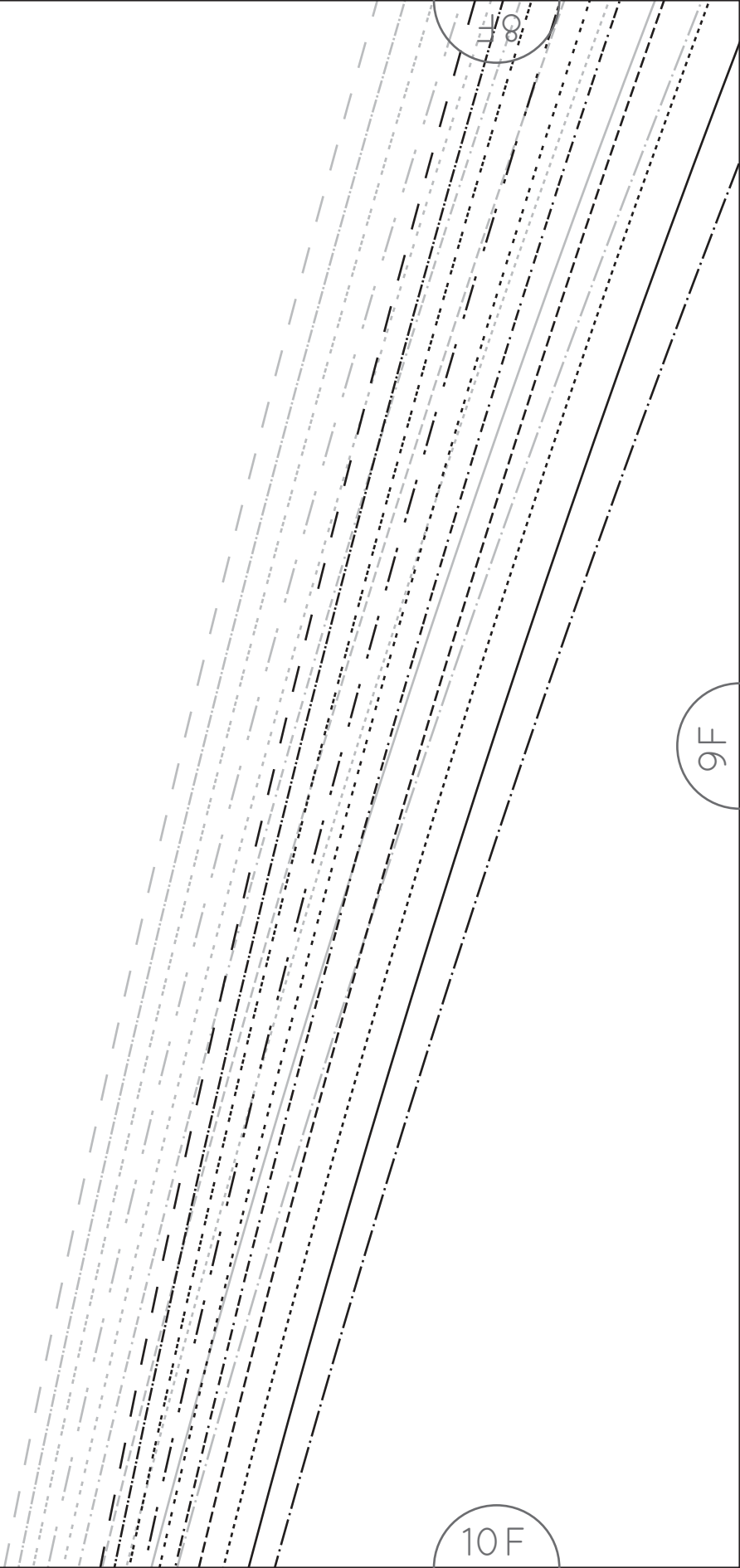
8E

9E

10E

9D

9E



11
∞

9F

10F

9F



58

10G

12A

12A

10B

LENGTHEN / SHORTEN LINE

11B

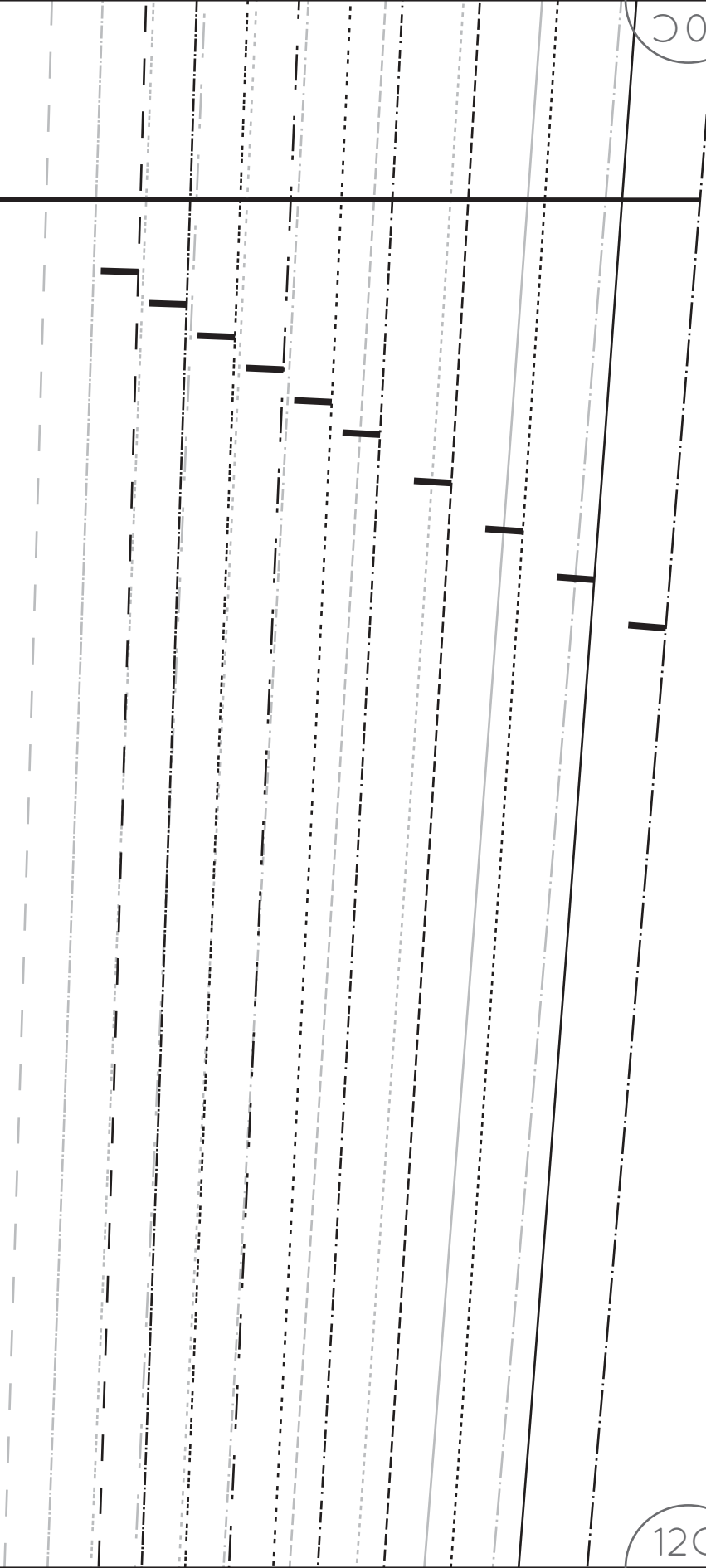


12B

10C

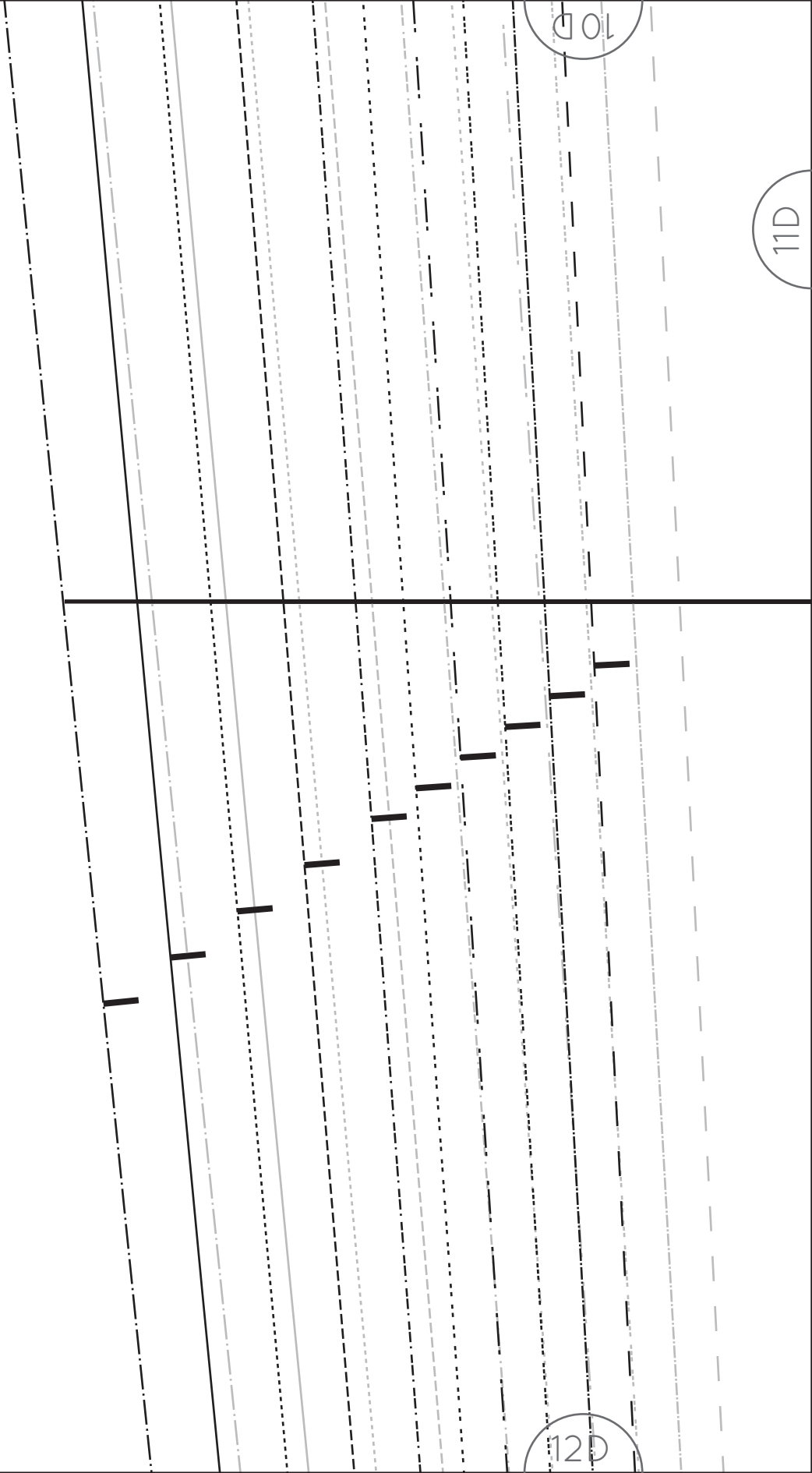
11C

11B



12C

11C



10D

11D

12D

11D

10E

11E

LENGTHEN / SHORTEN LINE

12E

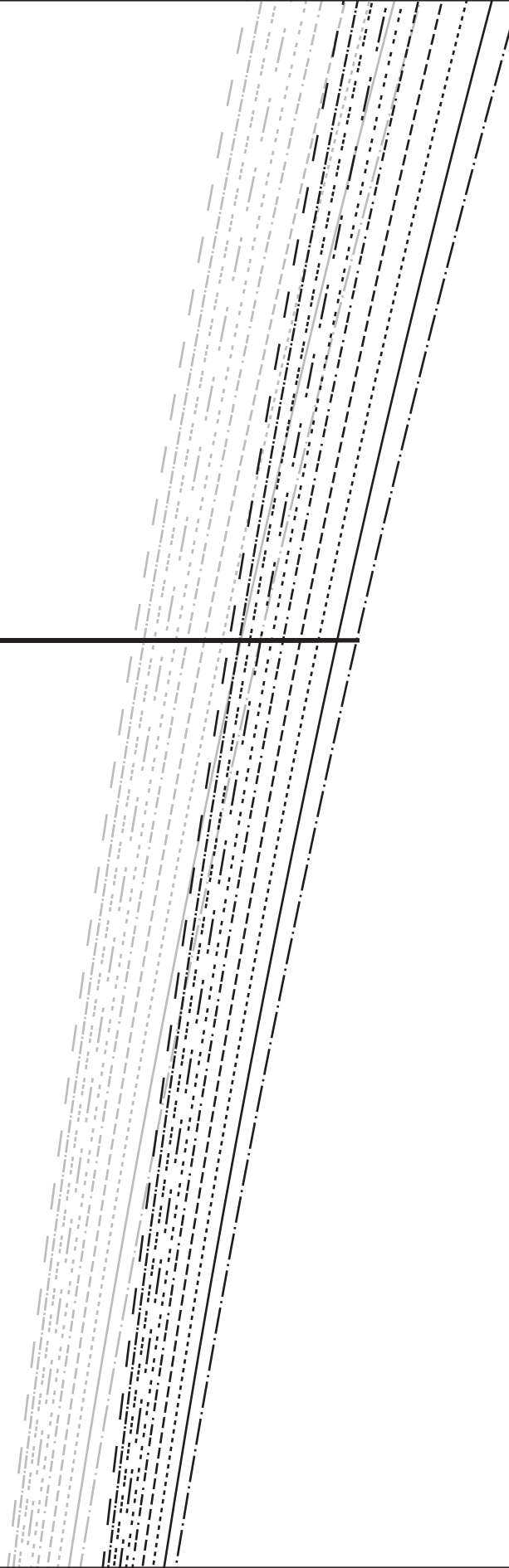


10F

11F

11E

12F



11F

10G

12G

12A

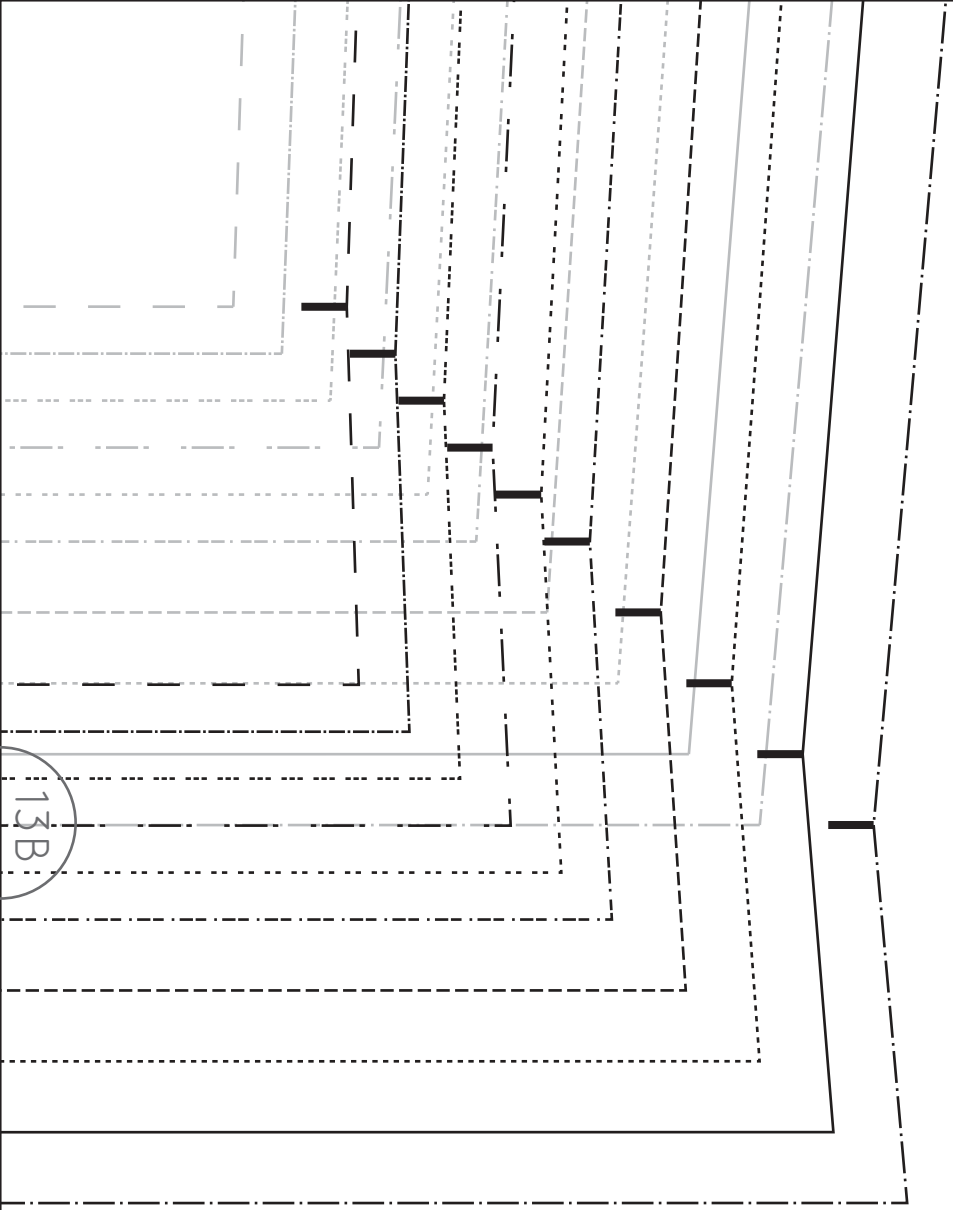
13A

12B

13A

13B

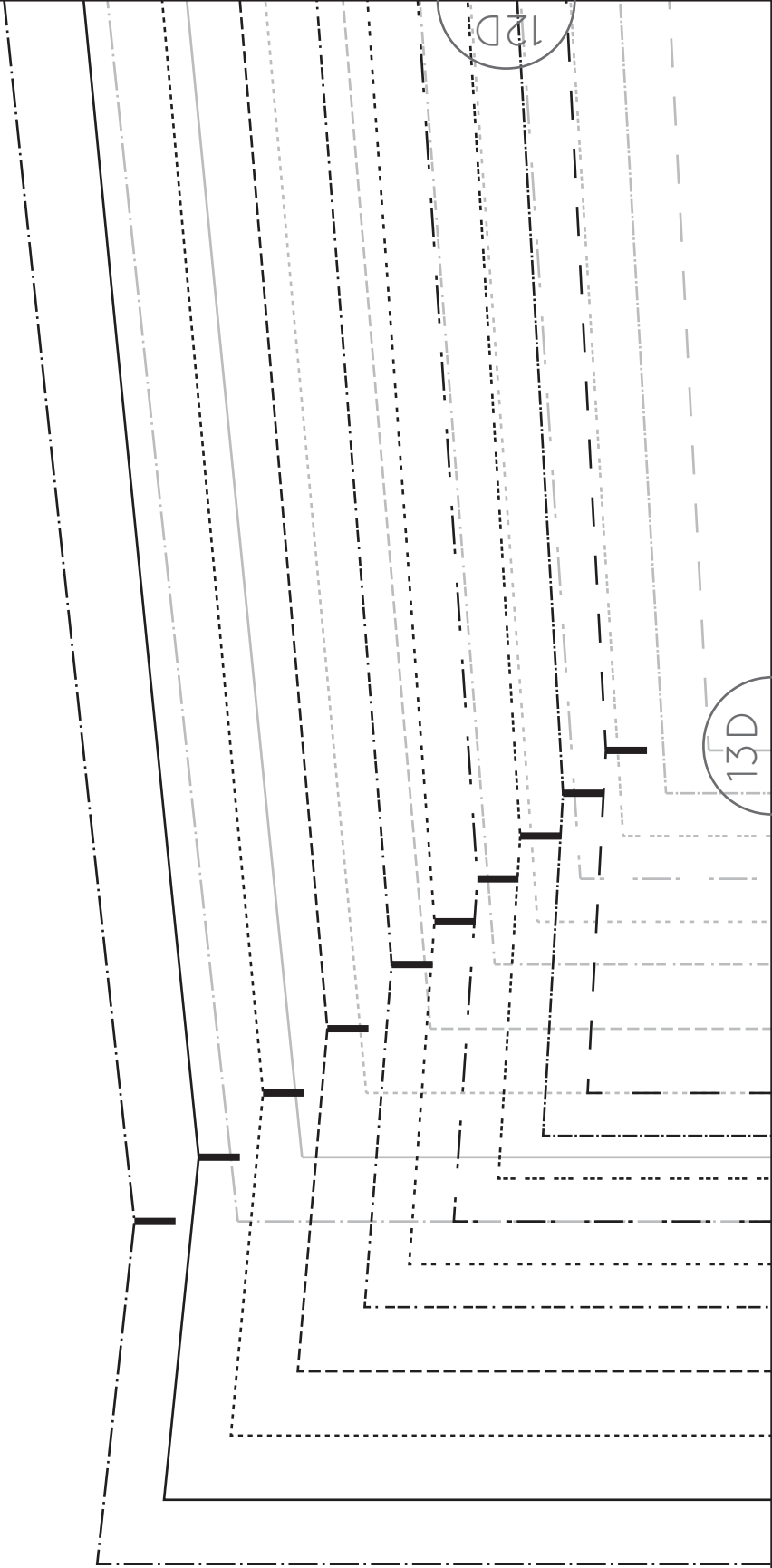
12C



13B

13C

13C



12D

13D

12E

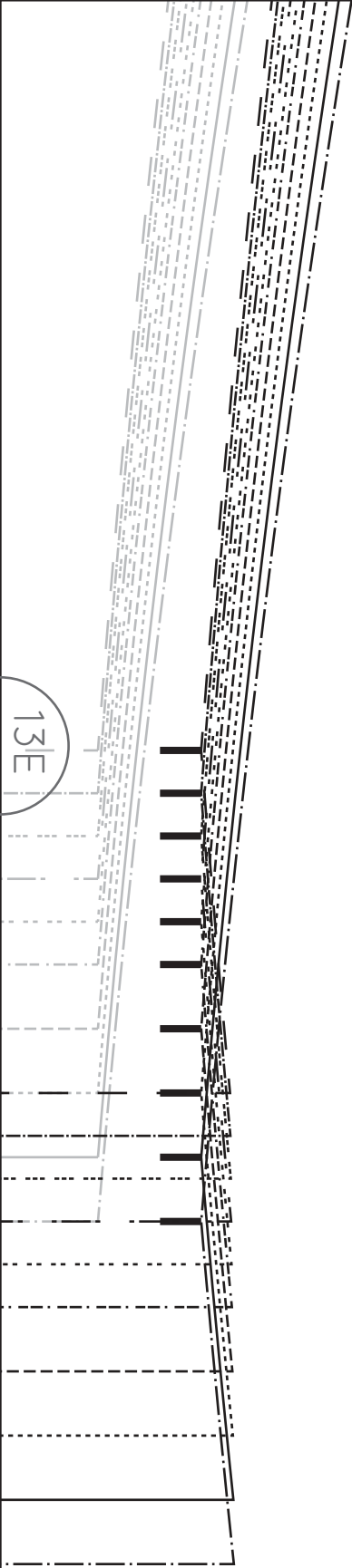
13E

13D

The page contains multiple sets of handwriting practice lines. Each set consists of a solid top line, a dashed midline, and a dotted bottom line. The lines are arranged in a grid-like pattern across the page, providing a guide for letter height and placement.

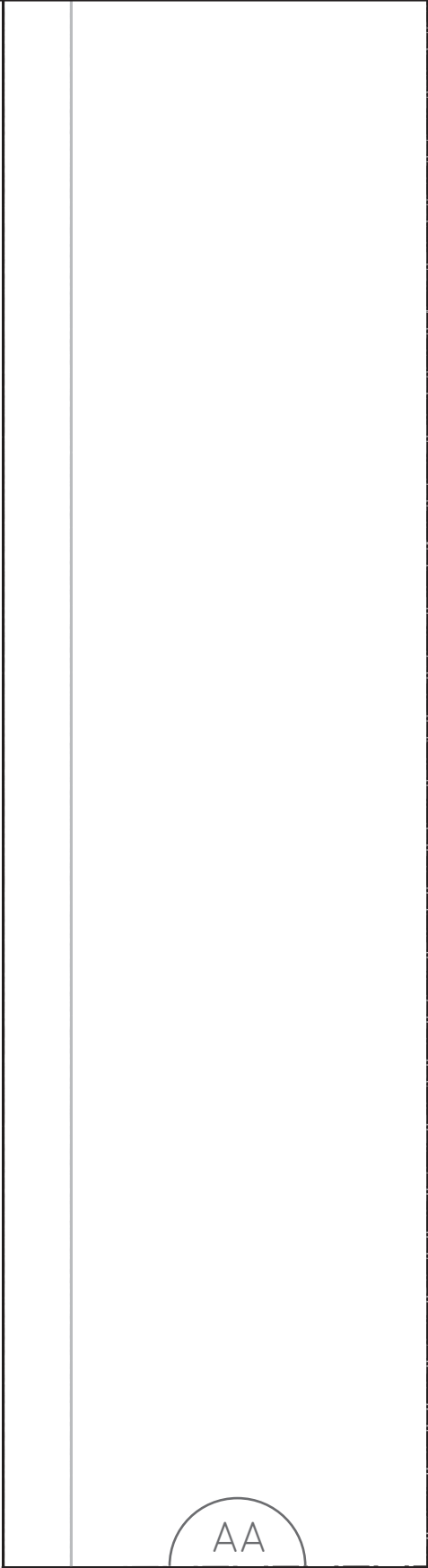
12F

13F



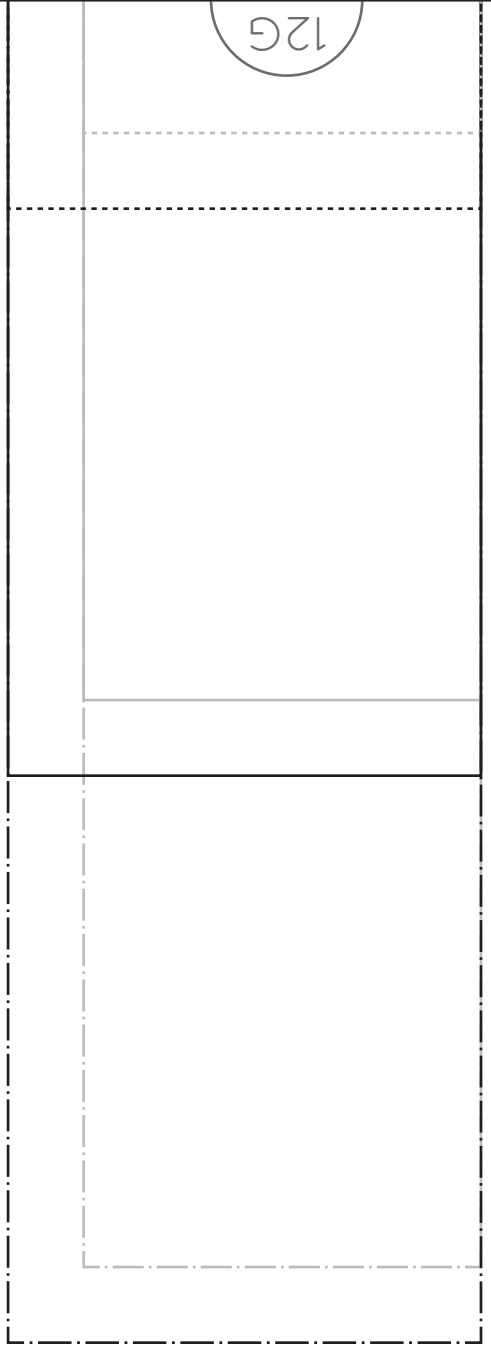
13E

13F



AA

.....
TAB
.....
ATTACH TO WAIST SASH PART B



12G