

Peppermint



PEPLUM TOP SEWING PATTERN

FEEL FREE TO HACK THIS PATTERN,
ADD TO THIS PATTERN, LOVE THIS PATTERN
AND TO MAKE IT OVER & OVER
BUT PLEASE REMEMBER THAT IT'S
FOR PERSONAL USE ONLY

HAPPY SEWING!

© Emily Hundt

PATTERN SIZE KEY

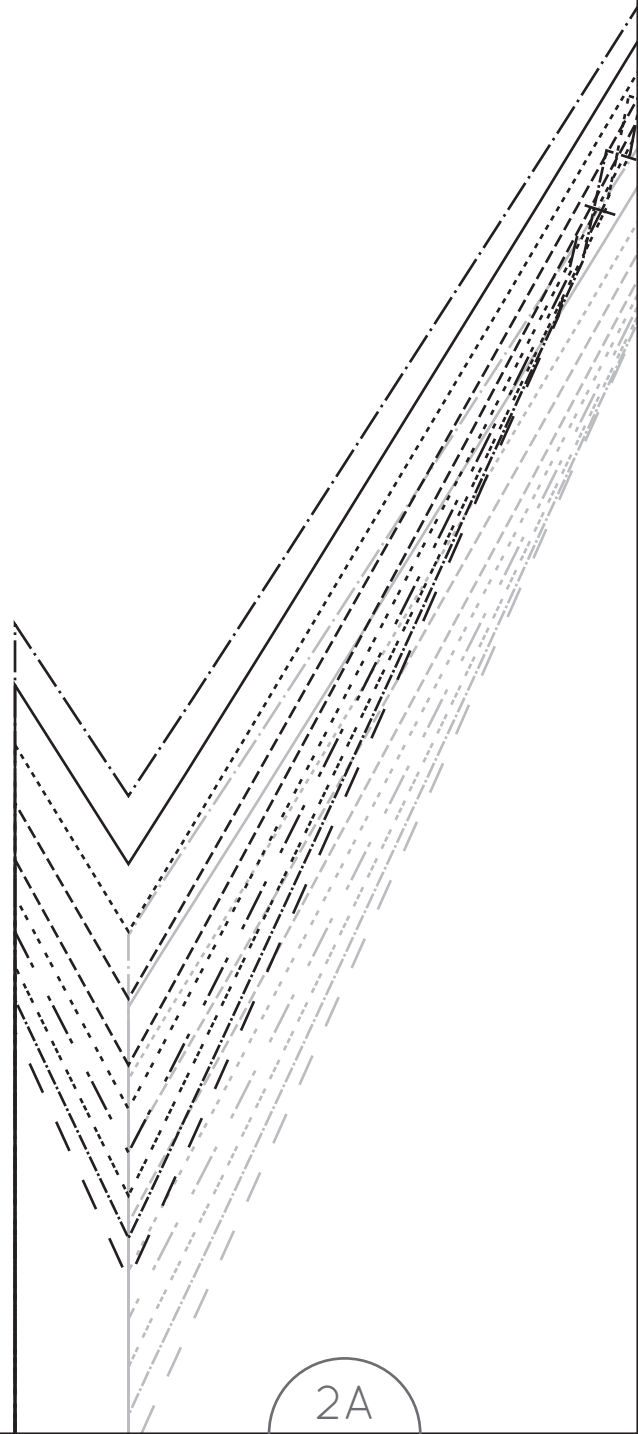
---	SIZE A
-.-.-.-	SIZE B
.....	SIZE C
-.-.-.-	SIZE D
.....	SIZE E
-.-.-.-	SIZE F
.....	SIZE G
.....	SIZE H
————	SIZE J
-.-.-.-	SIZE K

TEST SQUARE

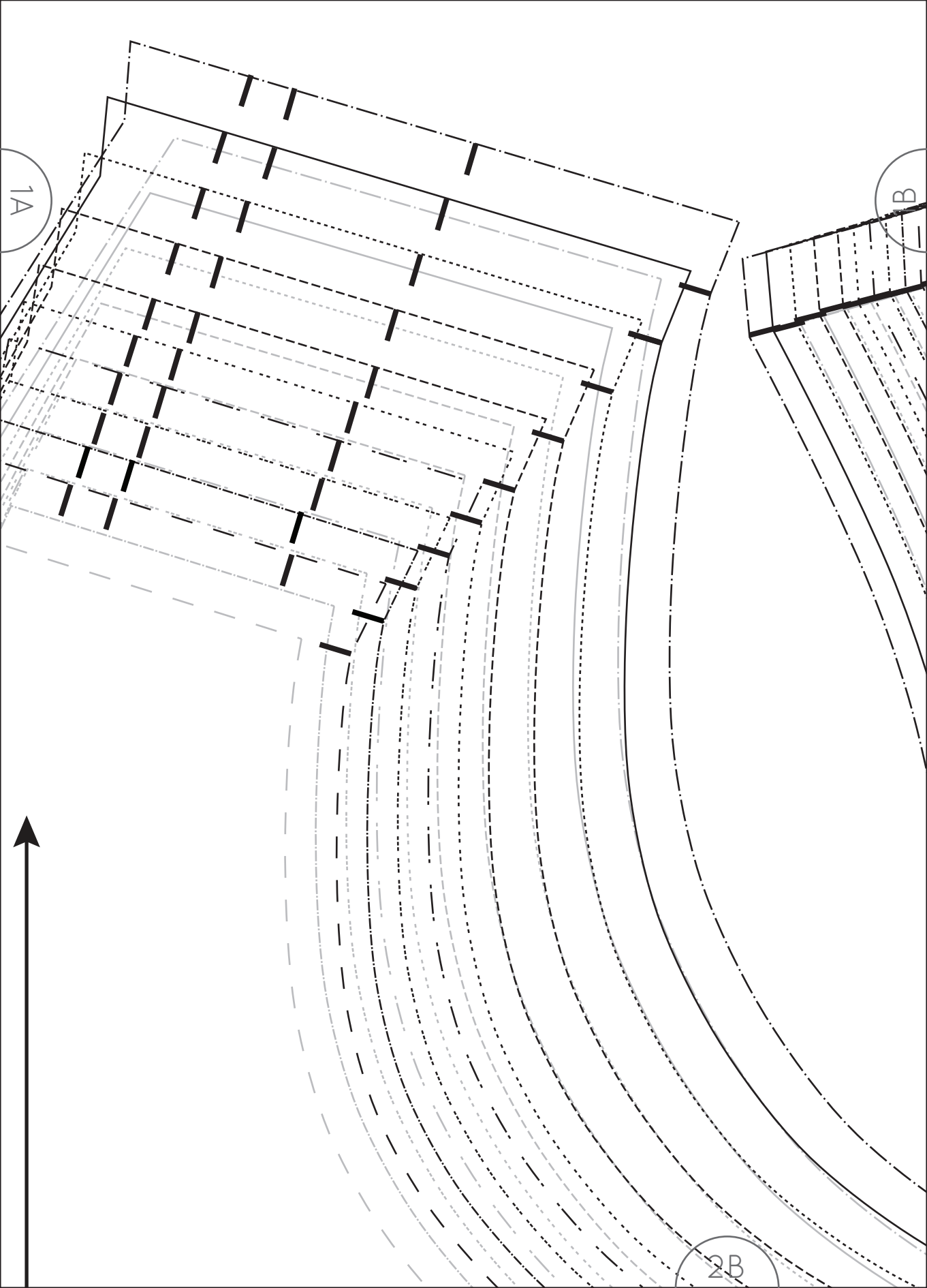


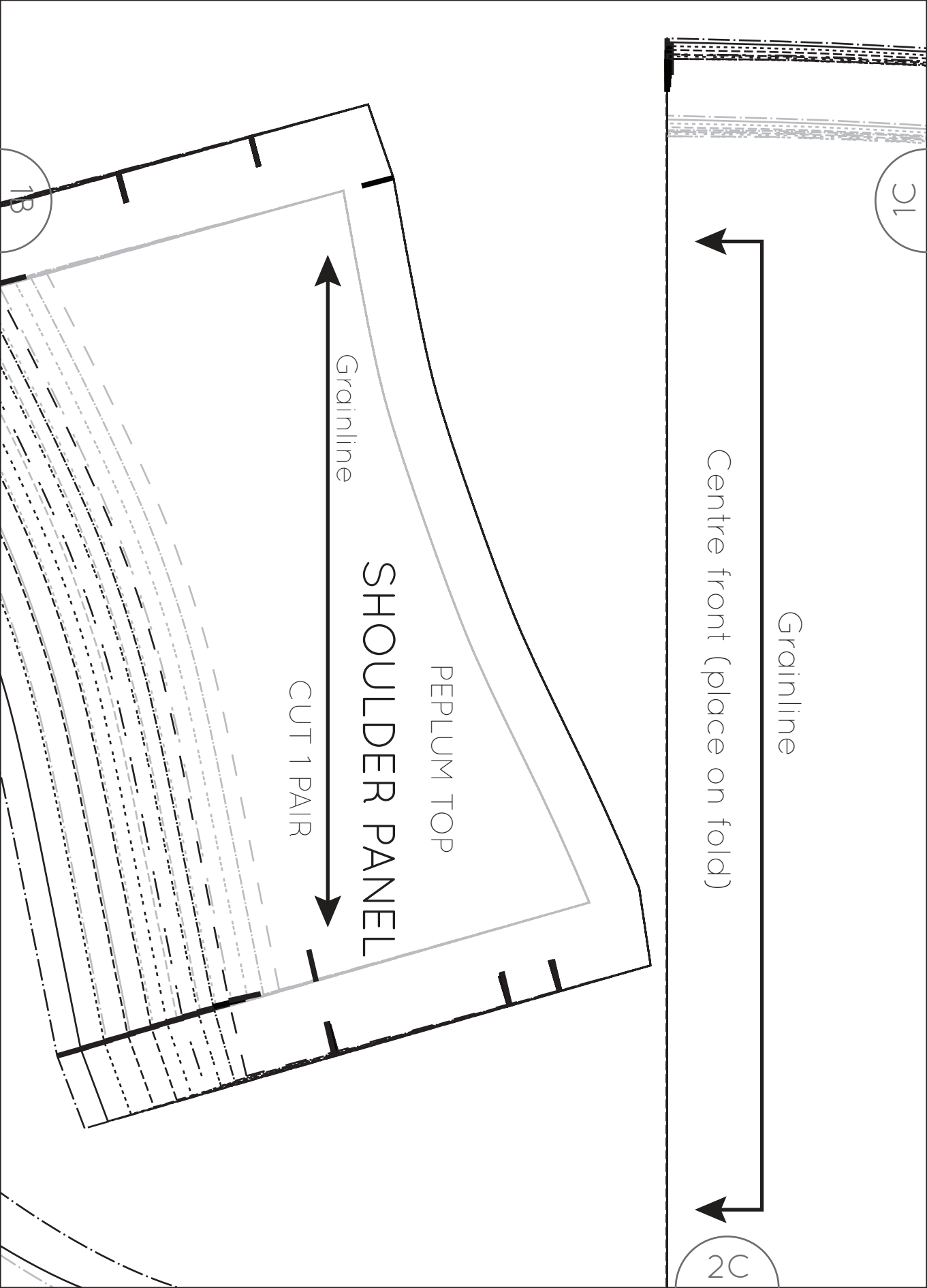
5cm x 5cm

1A



2A





1C

1D

CUT 1 ON FOLD

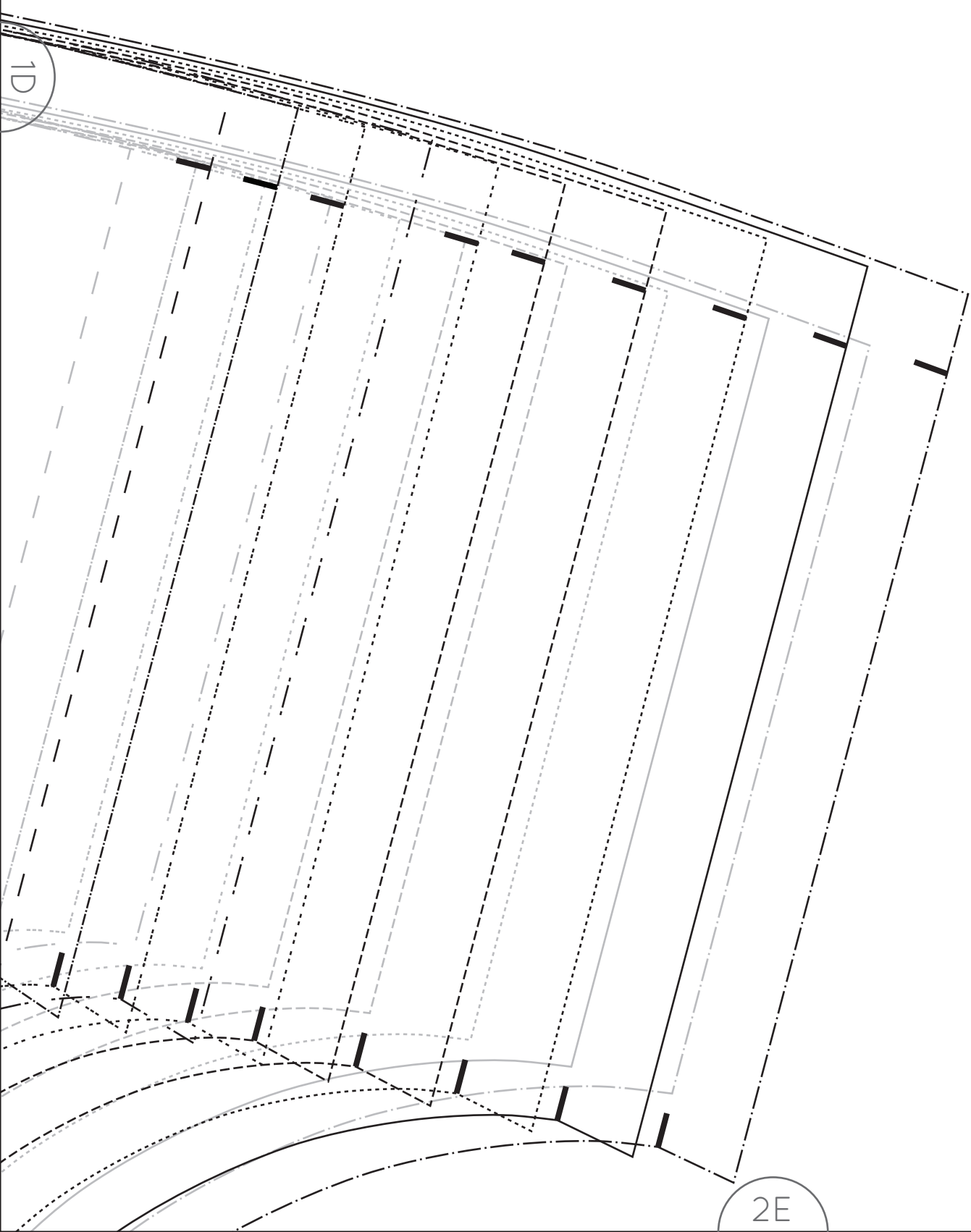
FRONT

PEPLUM TOP



Peppermint

2D











Our free Sewing School pattern is proudly supported by **Oekaki Renaissance from Toyota Home Sewing** - a revolutionary new sewing and free-motion embroidery machine designed to help you make beautiful things. 'Draw' your ideas directly onto fabric and create the designs of your dreams for quilting, textile arts, dressmaking, home furnishings and more.



OEKAKI 
Renaissance

PATTERN SYMBOL KEY

-  notch
-  double notch
(indicates the back of the pattern piece)
-  drill hole
-  cutting line
-  stitch line
-  grainline
-  place pattern on fold
-  lengthen / shorten line

SHARE YOUR MAKES



#peppermintsewandtell

Centre back

2A

3A

4A

Peppermint



PEPLUM TOP

BACK

CUT 1 PAIR

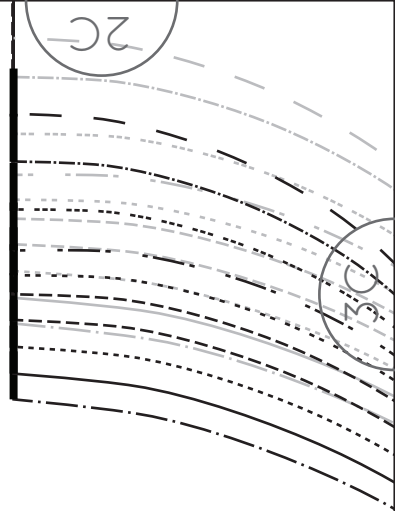
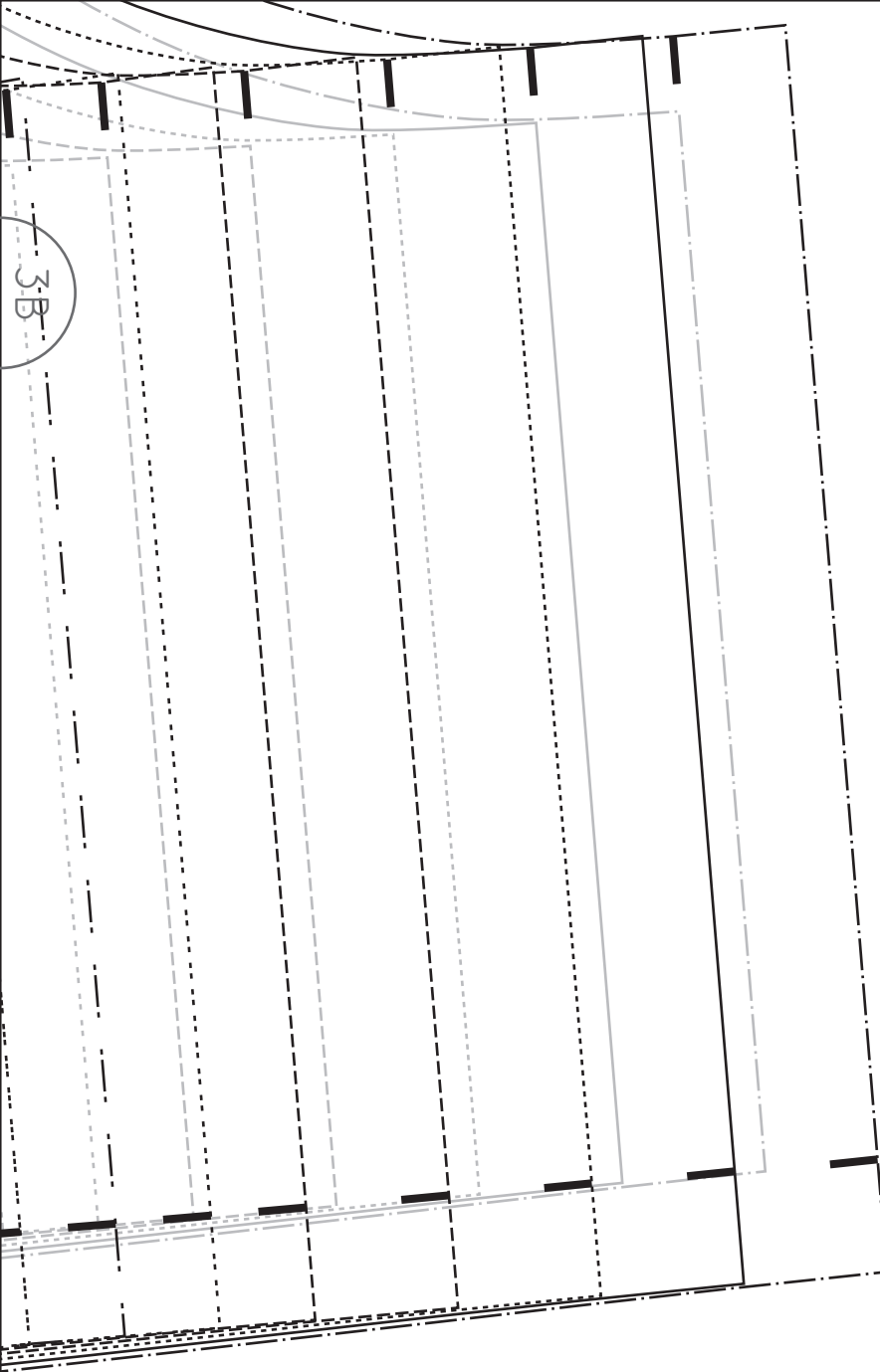


3A

2B

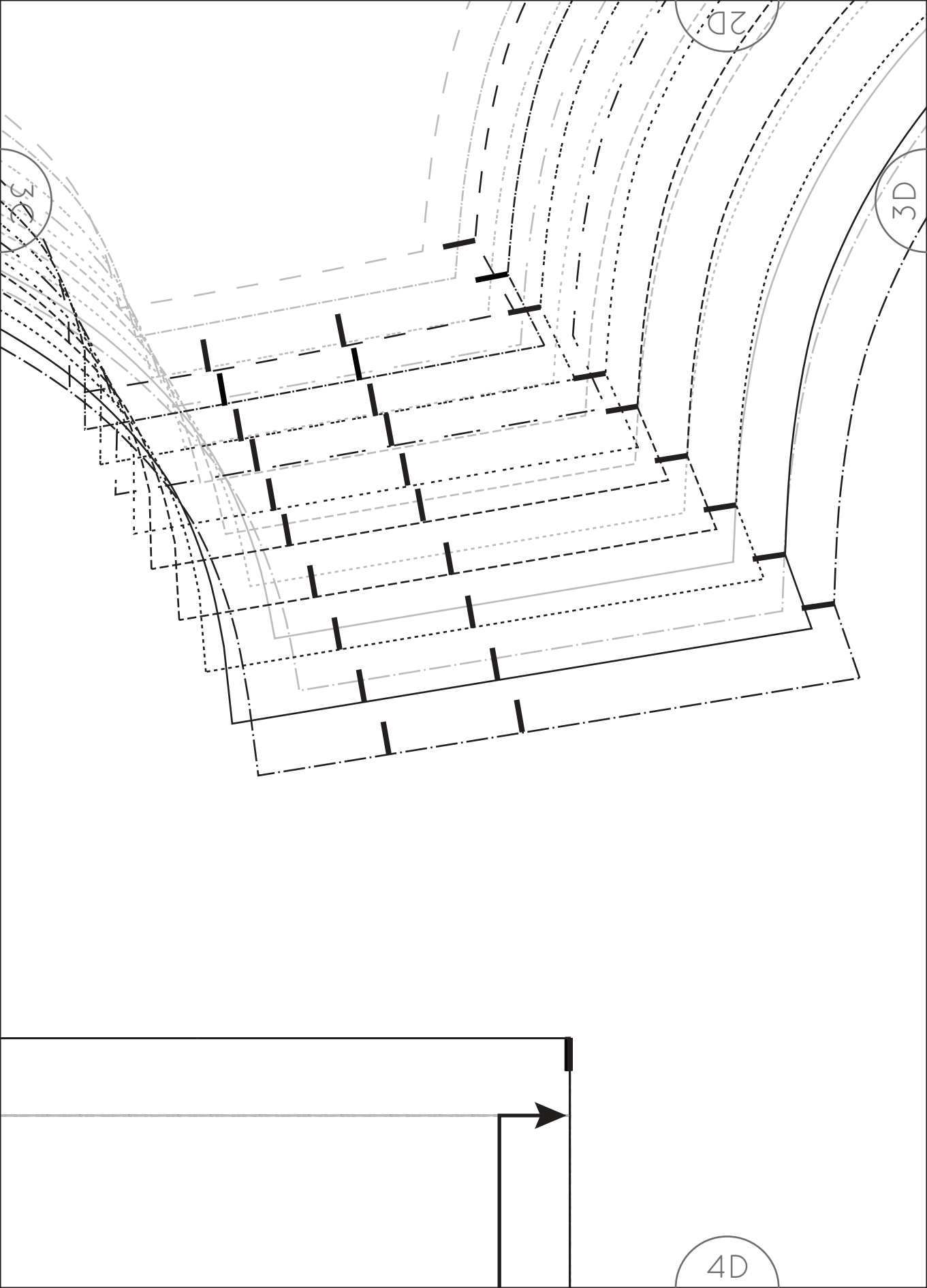
3B

4B



Peppermint

4C



2D

3D

3D

4D

2E

3D

4E

4A

5A

6A

4B

5B

5A

6B





4C

5C

PEPLUM TOP
BACK GATHERS

CUT 1 (ON FOLD)



Peppermint



6C

5B

5C

Grainline

Centre back (place on fold)

4D

5D

6D

rainline

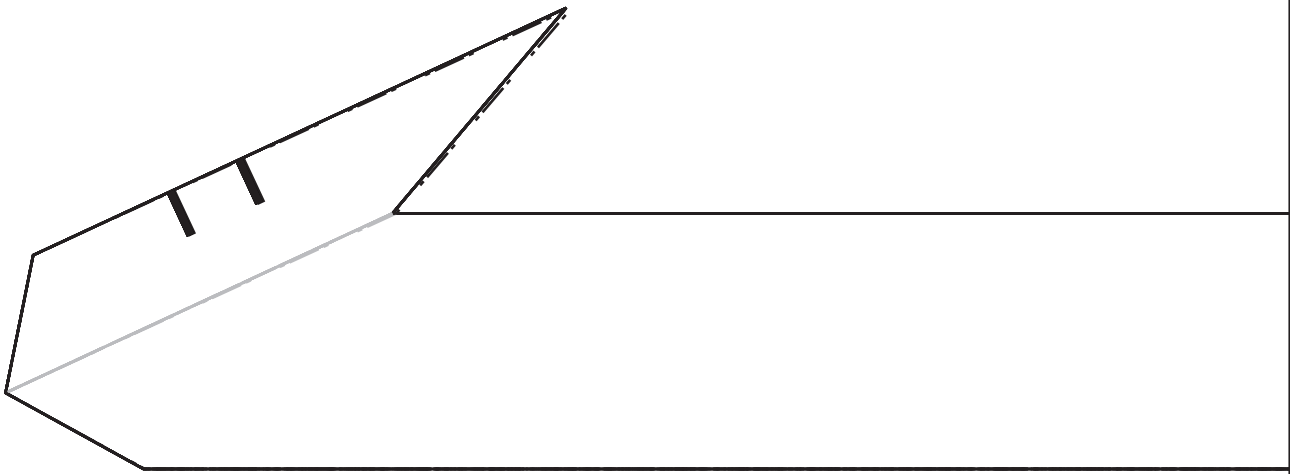
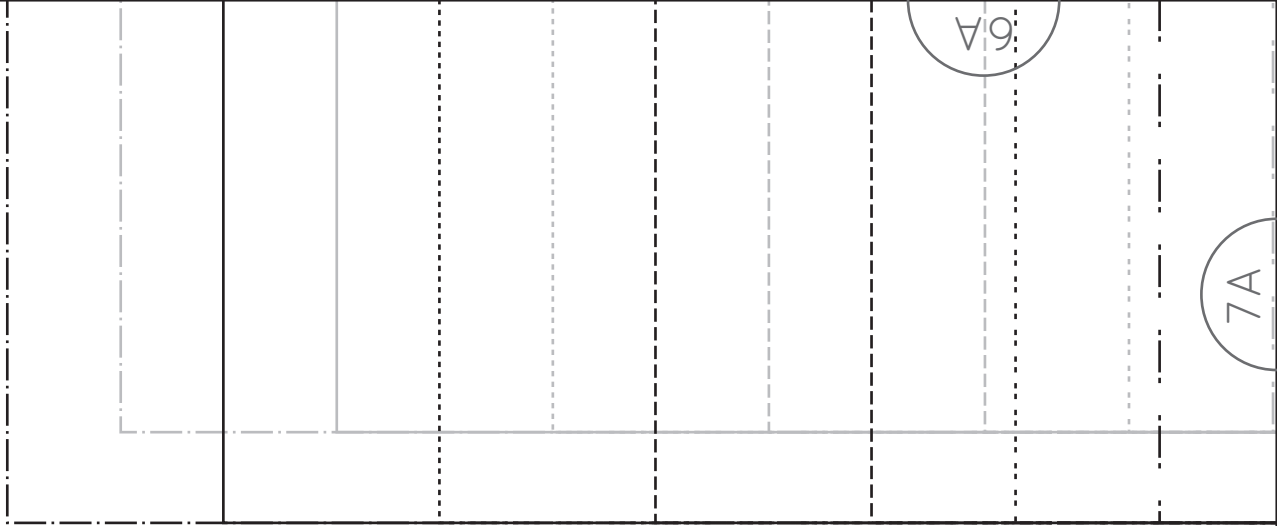
t (place on fold)



5D

6E

4E



Peppermint

WOMENSWEAR + SEWING PATTERNS
in the
folds
HANDMADE IN SYDNEY

PEPLUM TOP
ARMHOLE BINDING

CUT 1 PAIR

6B

7B

7A

Handwriting practice sheet with a header section containing dashed lines for tracing and a main section with four horizontal lines for writing.

FRONT GATHERS

CUT 1 (ON FOLD)

7B

7C

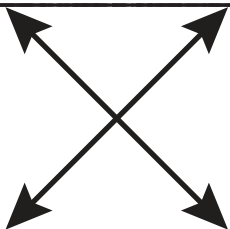
Peppermint



PEPLUM TOP

NECK BINDING

CUT 1



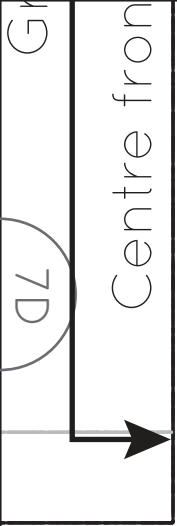
Grainline
(on bias)

6D

7D

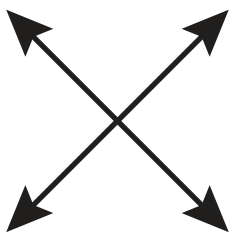
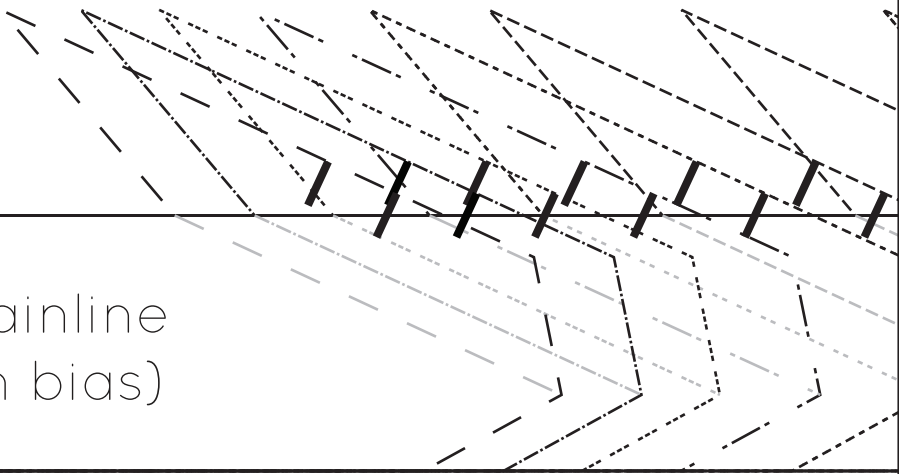
7C

--	--	--	--	--	--	--	--	--	--



6E

7E



Grainline
(on bias)

