

Peppermint



PLEATED SKIRT SEWING PATTERN

FEEL FREE TO HACK THIS PATTERN,
ADD TO THIS PATTERN, LOVE THIS PATTERN
AND TO MAKE IT OVER & OVER
BUT PLEASE REMEMBER THAT IT'S
FOR PERSONAL USE ONLY

HAPPY SEWING!

© Emily Hundt

PATTERN SIZE KEY

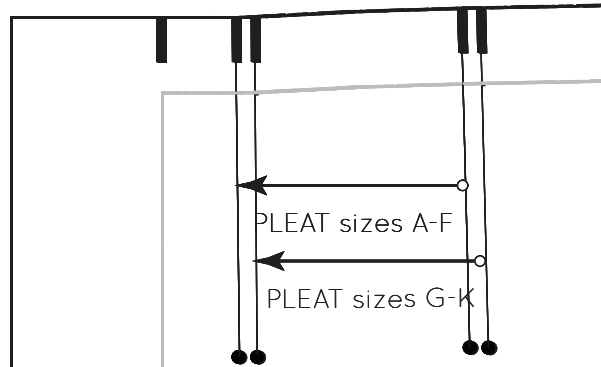
— — — — —	SIZE A
— · — · — · — · — · — ·	SIZE B
······	SIZE C
— · — · — · — ·	SIZE D
······	SIZE E
— · — · — · — ·	SIZE F
— — — — —	SIZE G
······	SIZE H
—————	SIZE J
— · — · — · — ·	SIZE K

TEST SQUARE



5cm x 5cm

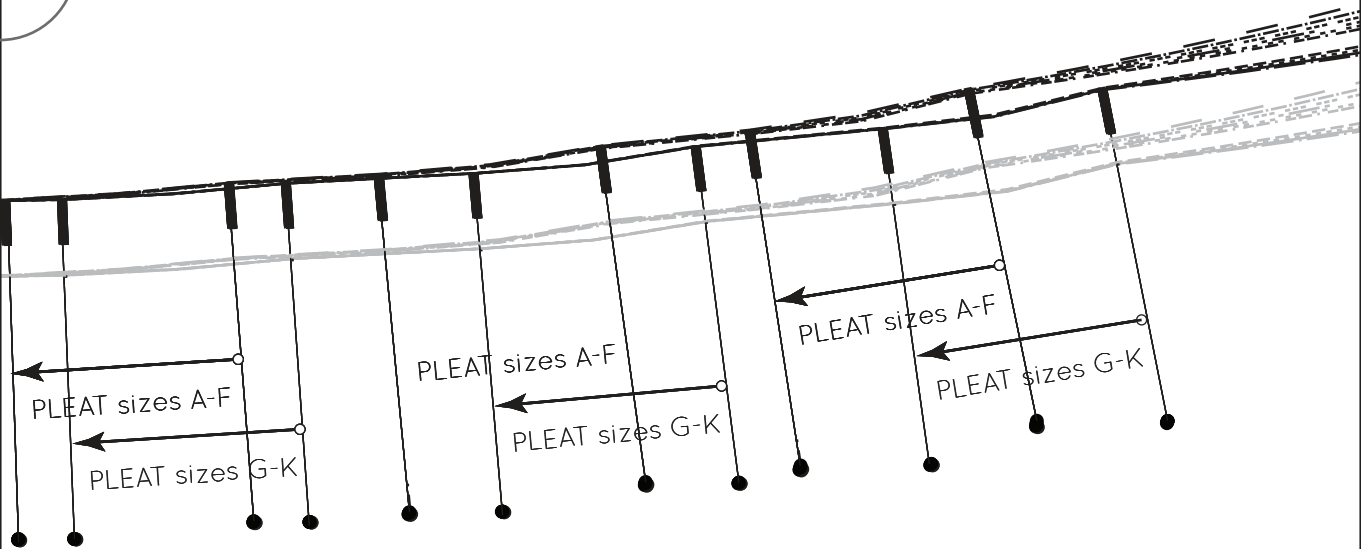
1A



2A

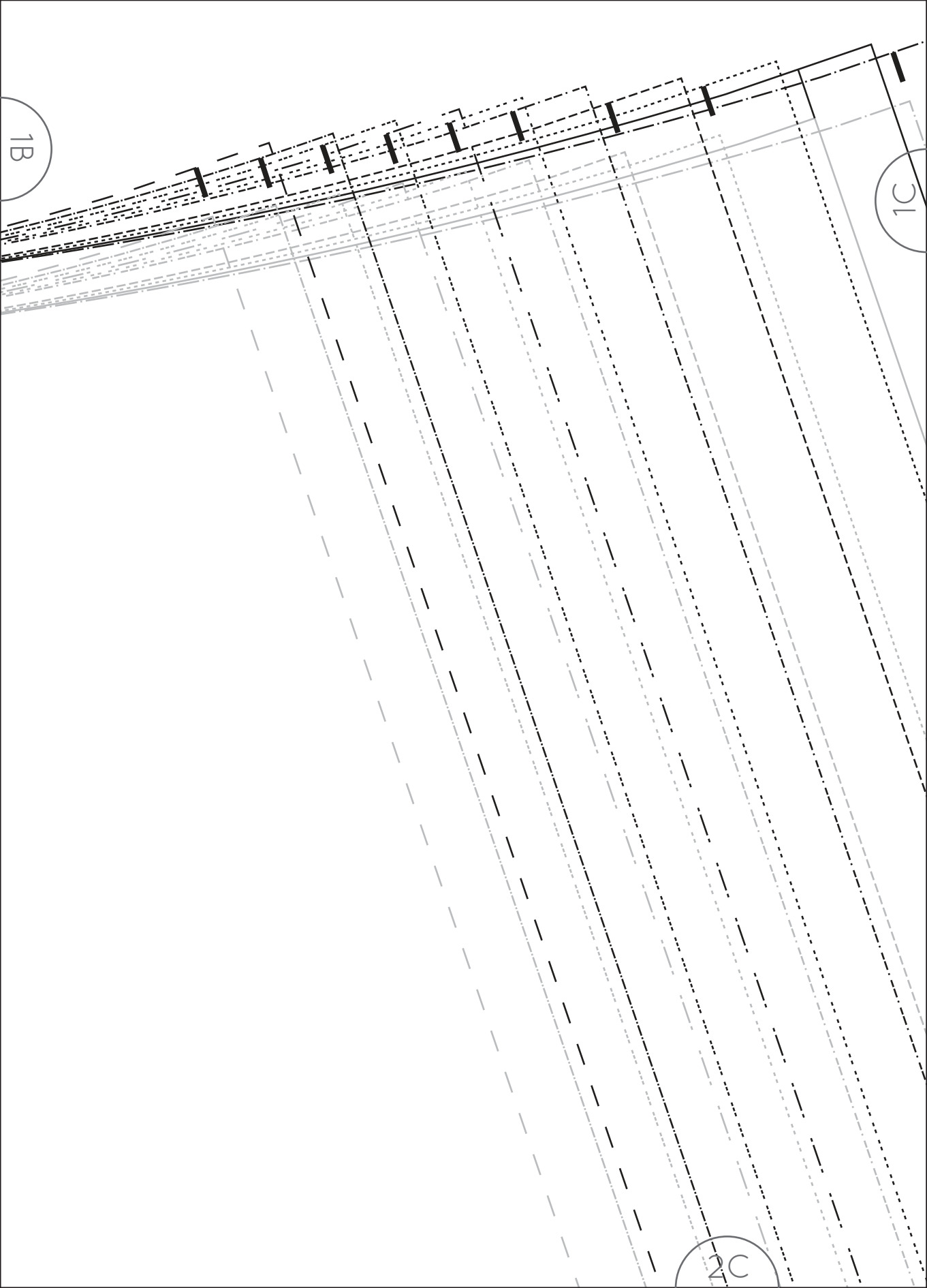
1A

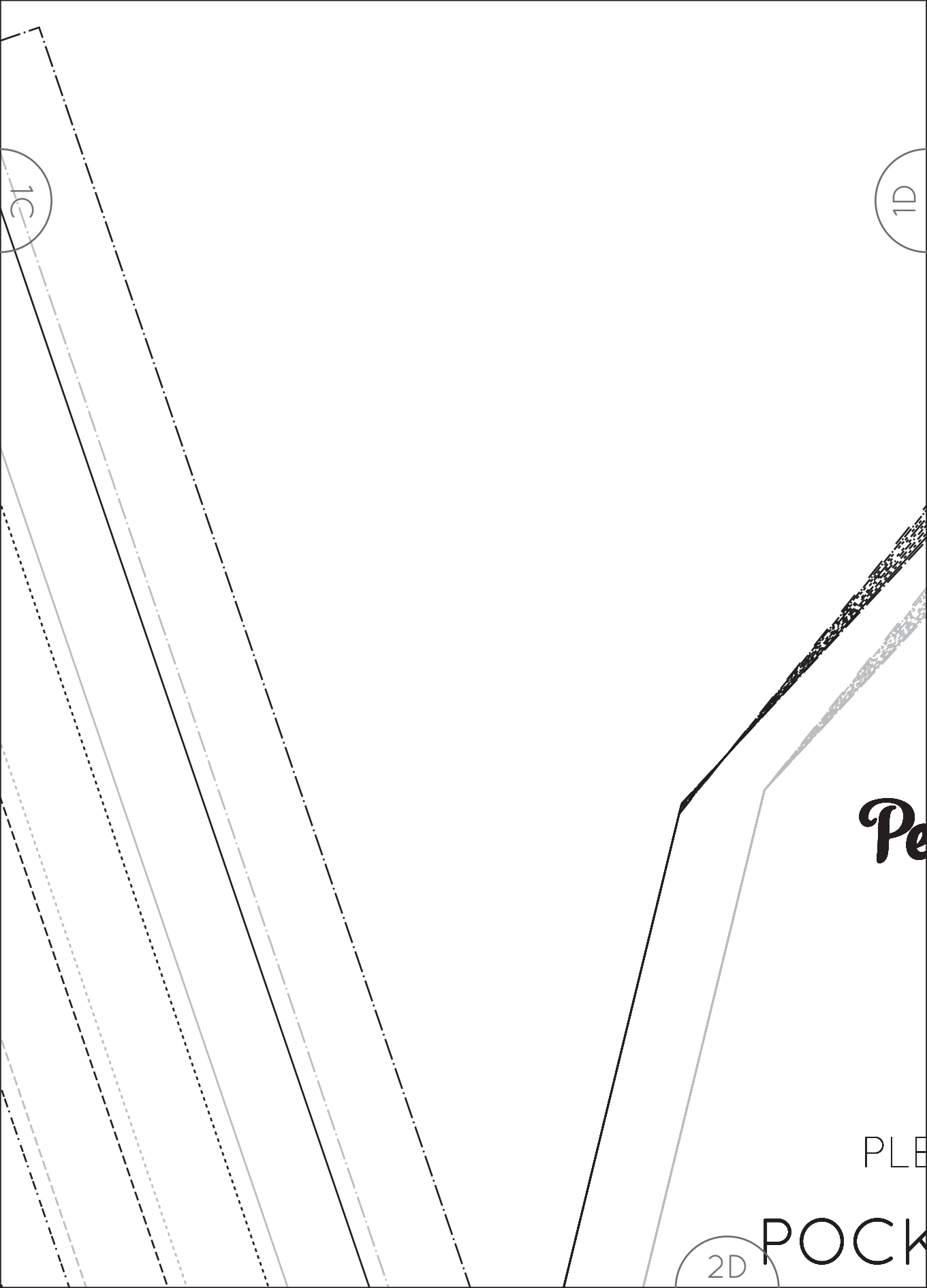
1B

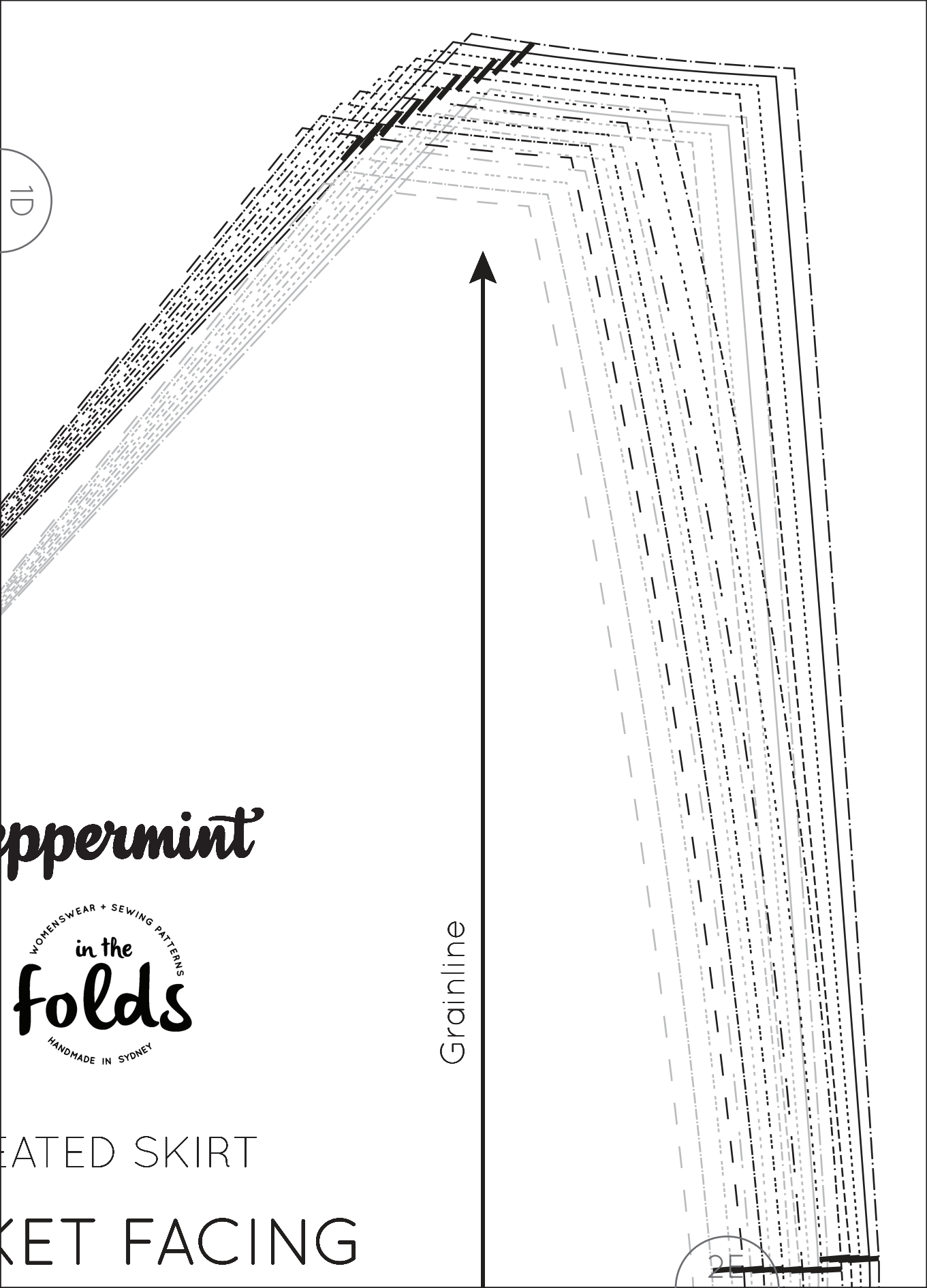


Peppermint

2B







1D

peppermint

WOMENSWEAR + SEWING PATTERNS
in the
folds
HANDMADE IN SYDNEY

Grainline

EATED SKIRT

SKIRT FACING










2E

Our free Sewing School pattern is proudly supported by **Oekaki Renaissance from Toyota Home Sewing** - a revolutionary new sewing and free-motion embroidery machine designed to help you make beautiful things. 'Draw' your ideas directly onto fabric and create the designs of your dreams for quilting, textile arts, dressmaking, home furnishings and more.



OEKAKI 
Renaissance

PATTERN SYMBOL KEY

-  notch
-  double notch
(indicates the back of the pattern piece)
-  drill hole
-  cutting line
-  stitch line
-  grainline
-  place pattern on fold
-  lengthen / shorten line
-  direction to fold pleat

SHARE YOUR MAKES



#peppermintsewandtell

Tag us
@inthefolds
@peppermintmagazine

Grainline

2A

3A

4A



2B

3B

PLEATED SKIRT

BACK

CUT 1 PAIR

4B

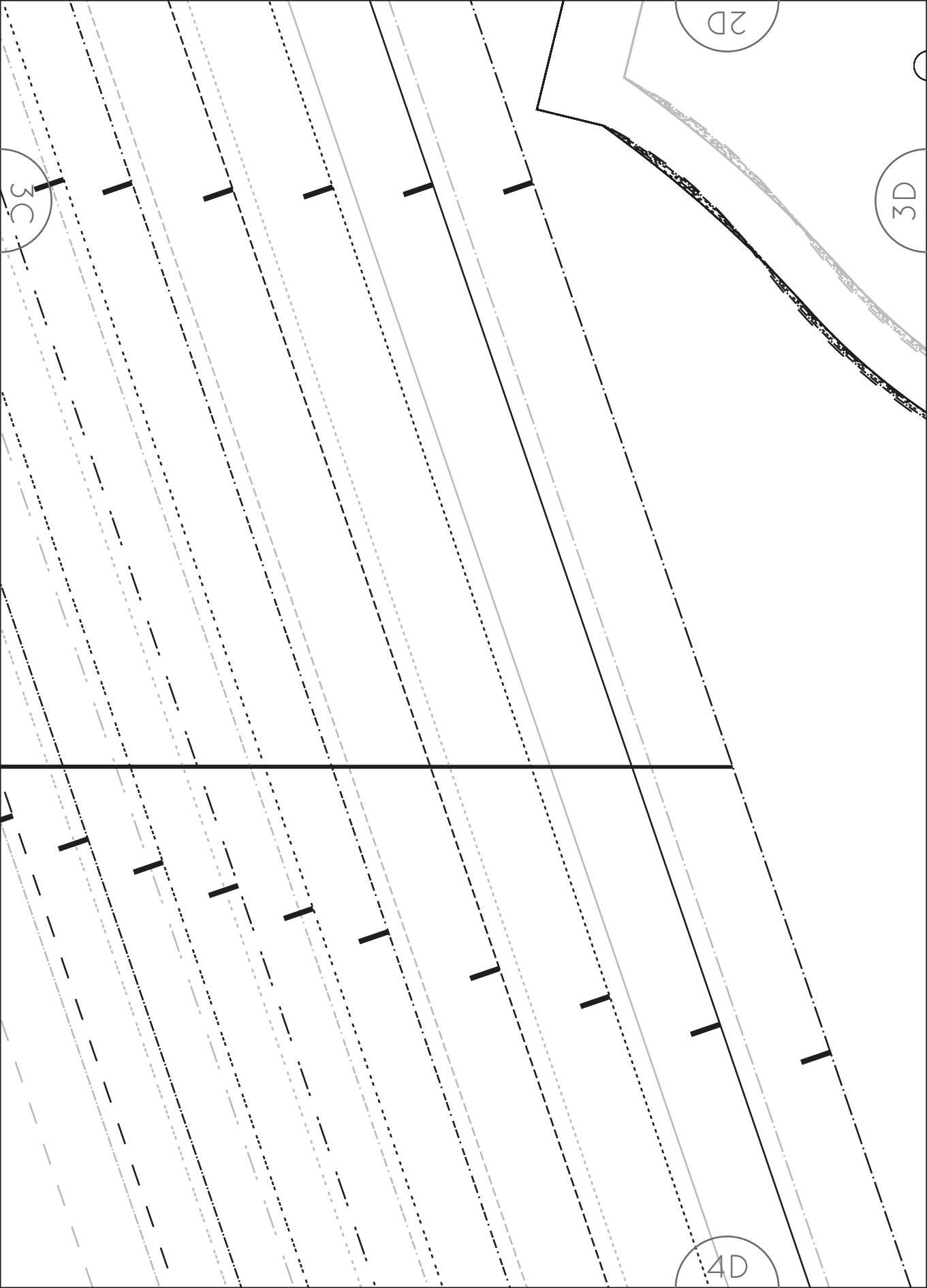
3B

2C

3C

LENGTHEN / SHORTEN LINE

4C



2D

3D

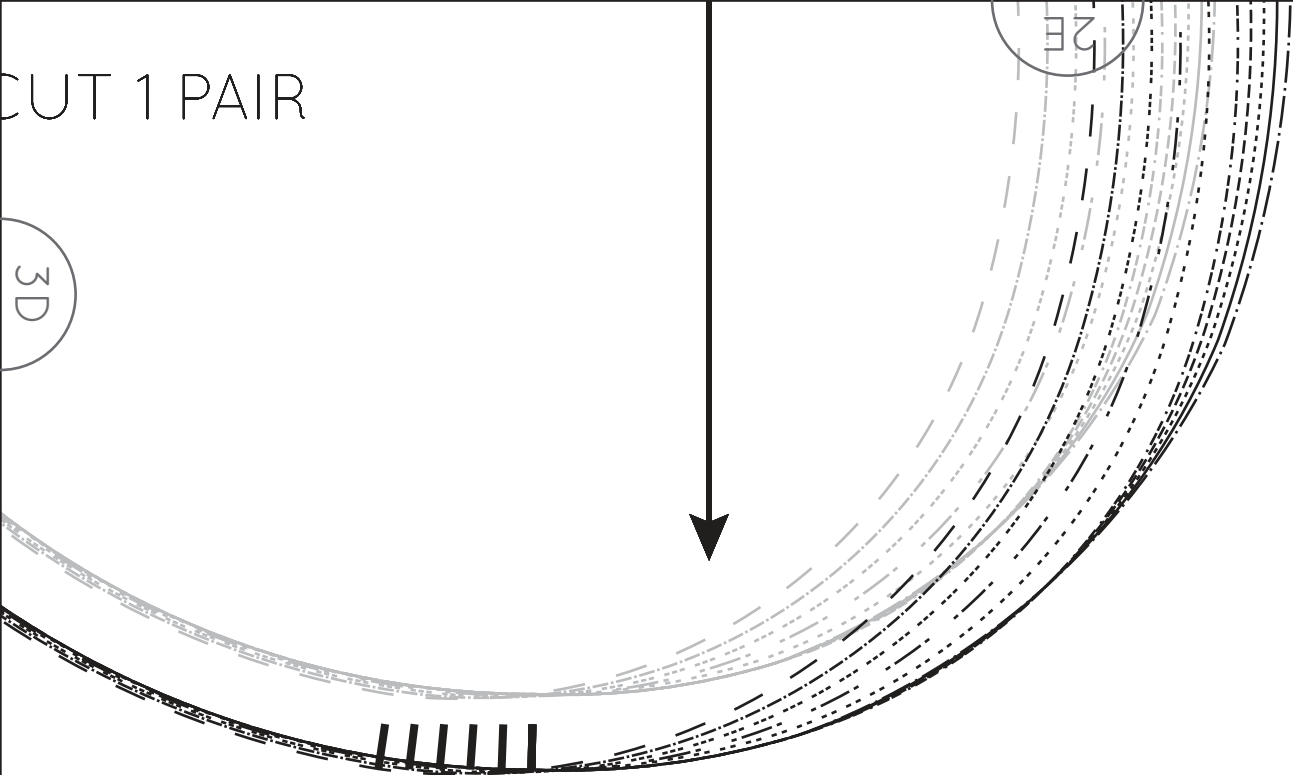
3C

4D

CUT 1 PAIR

3D

2E

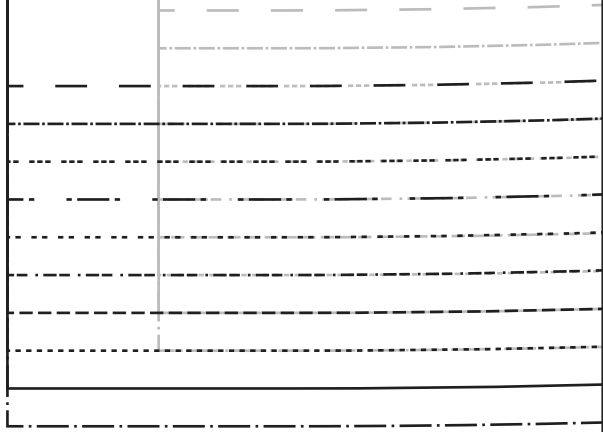


4E

4A



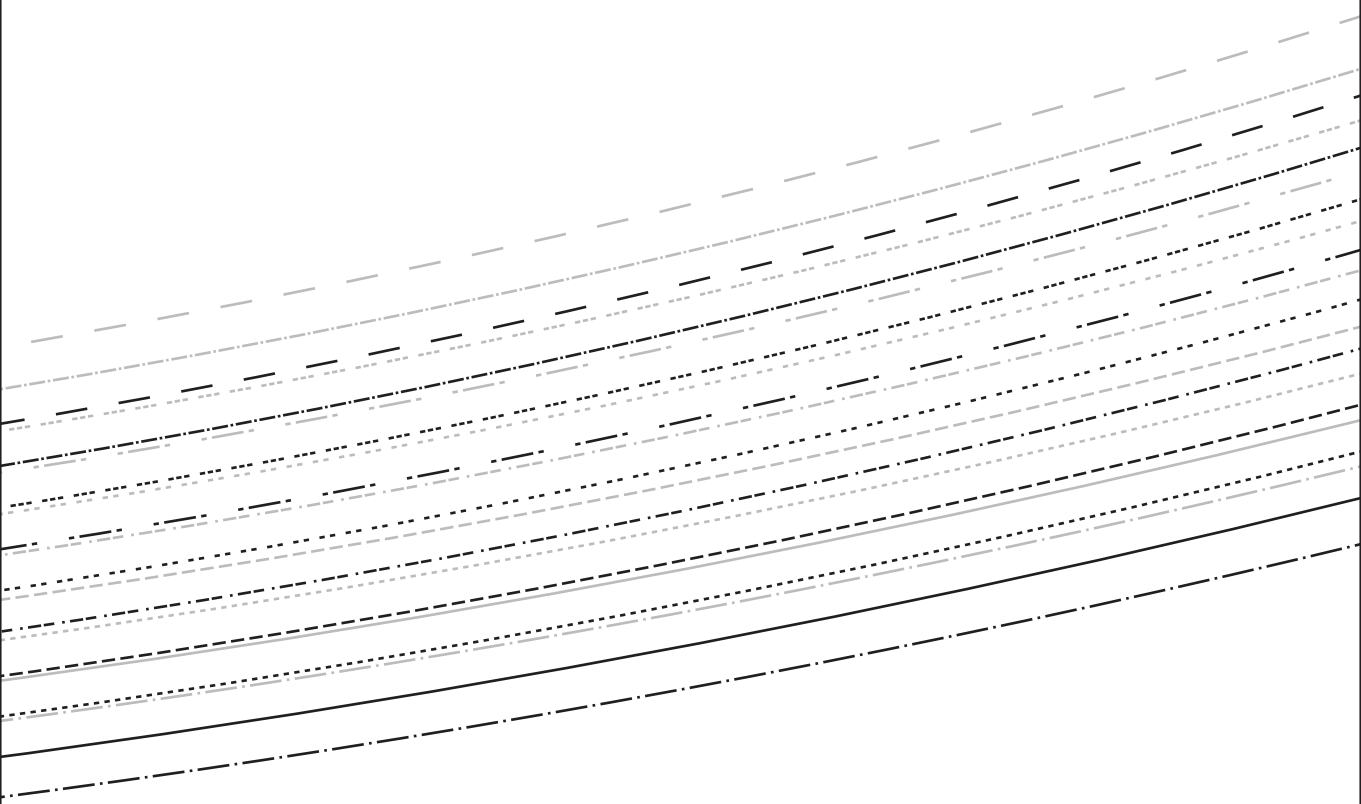
5A

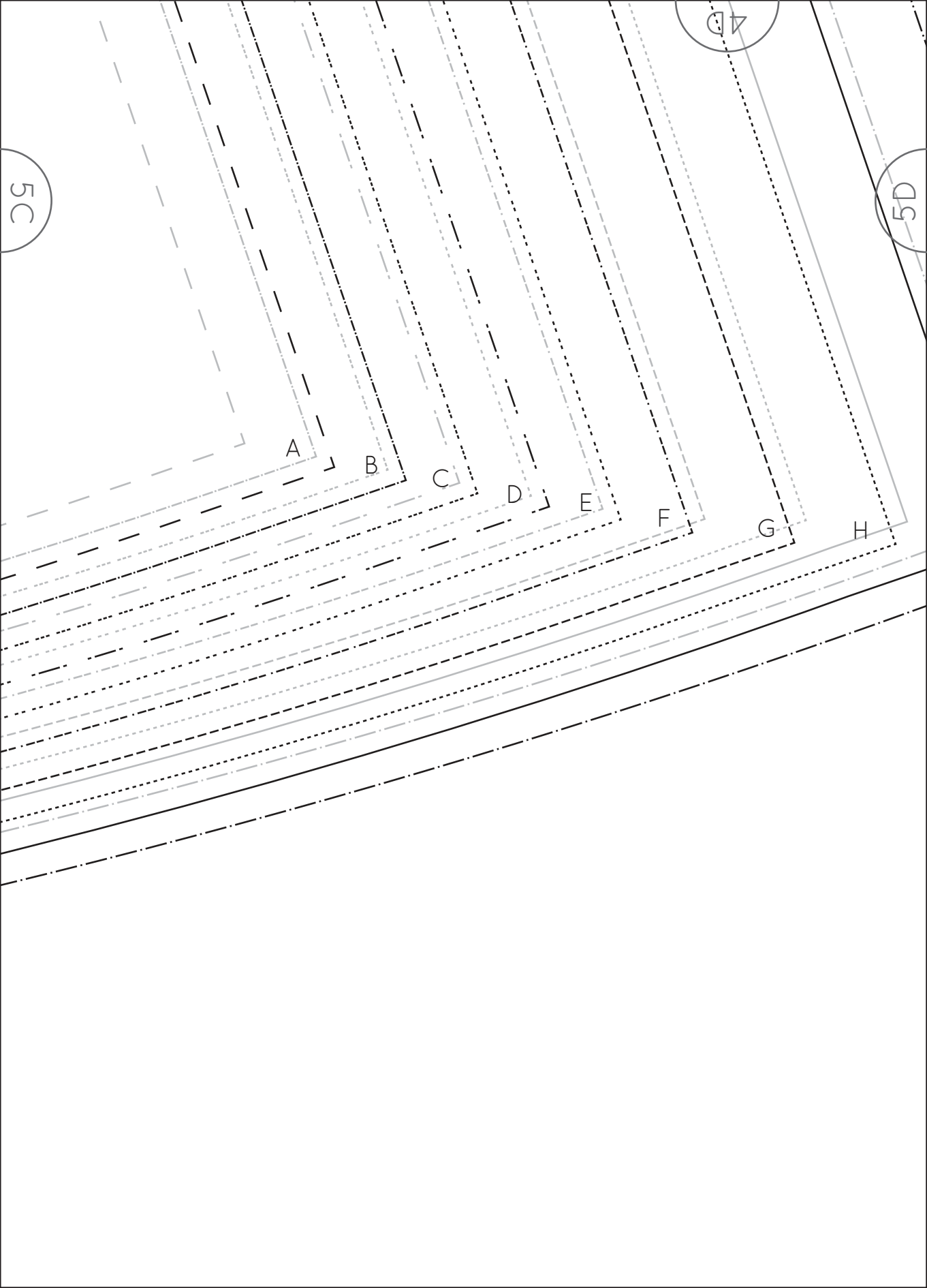


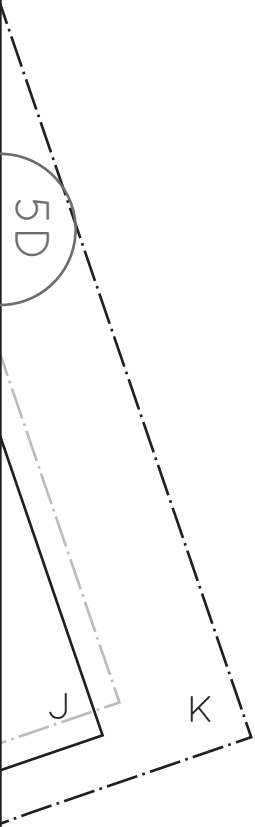
4C

5C

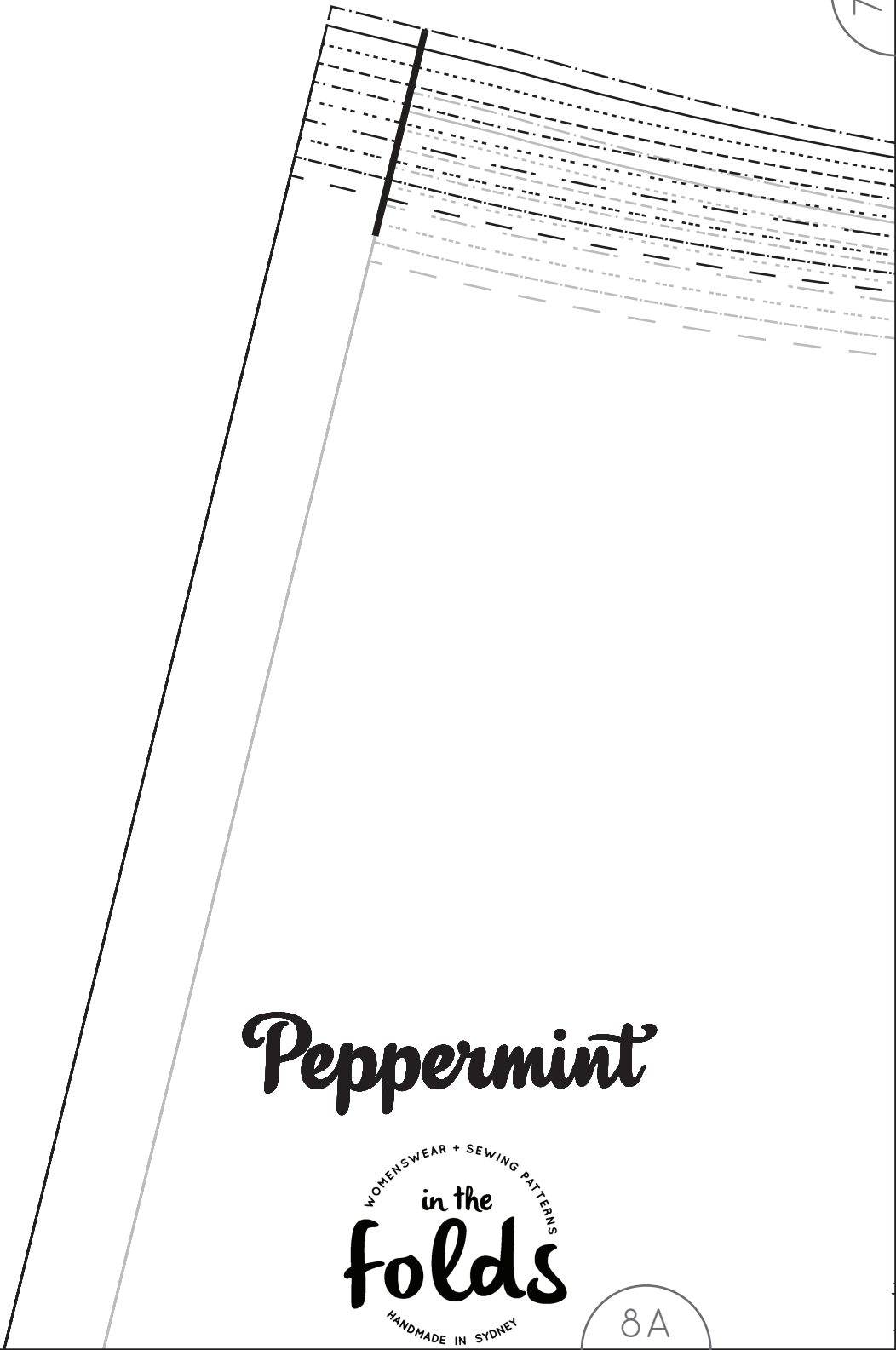
5B







7A



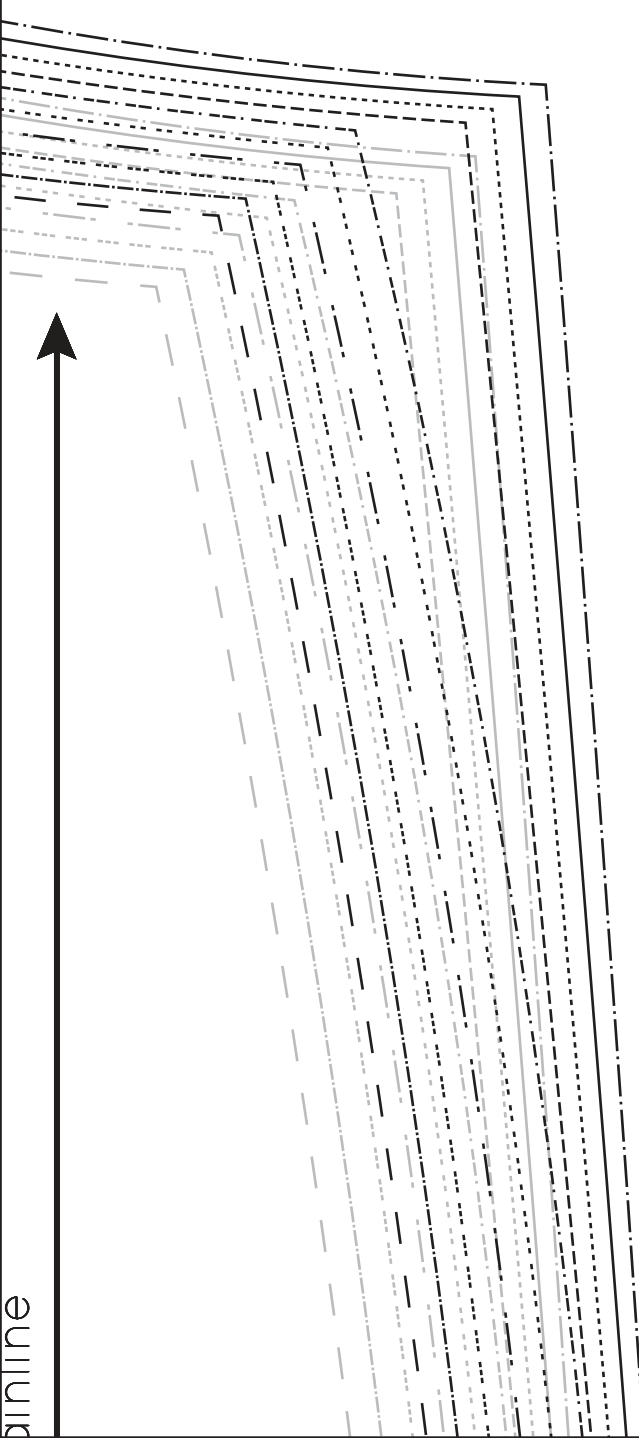
Peppermint

WOMENSWEAR + SEWING PATTERNS
in the
folds
HANDMADE IN SYDNEY

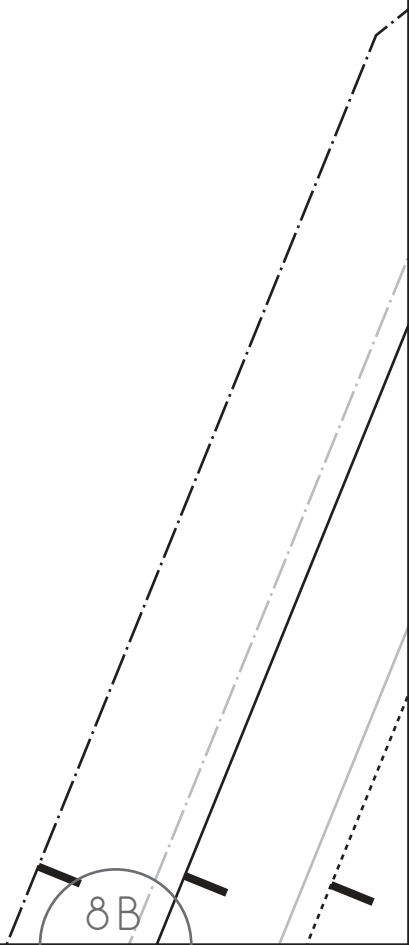
8A

7A

7B



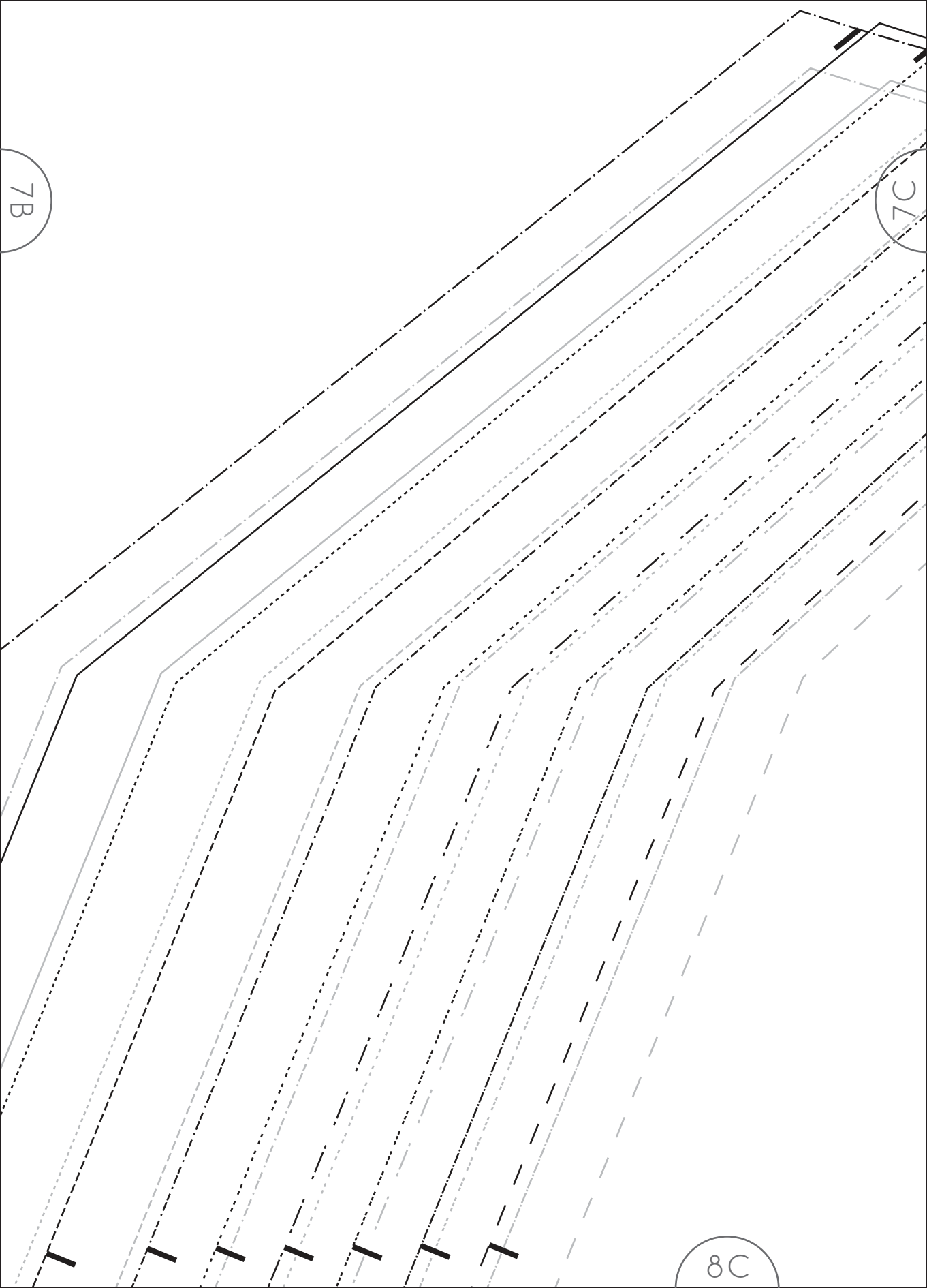
baseline



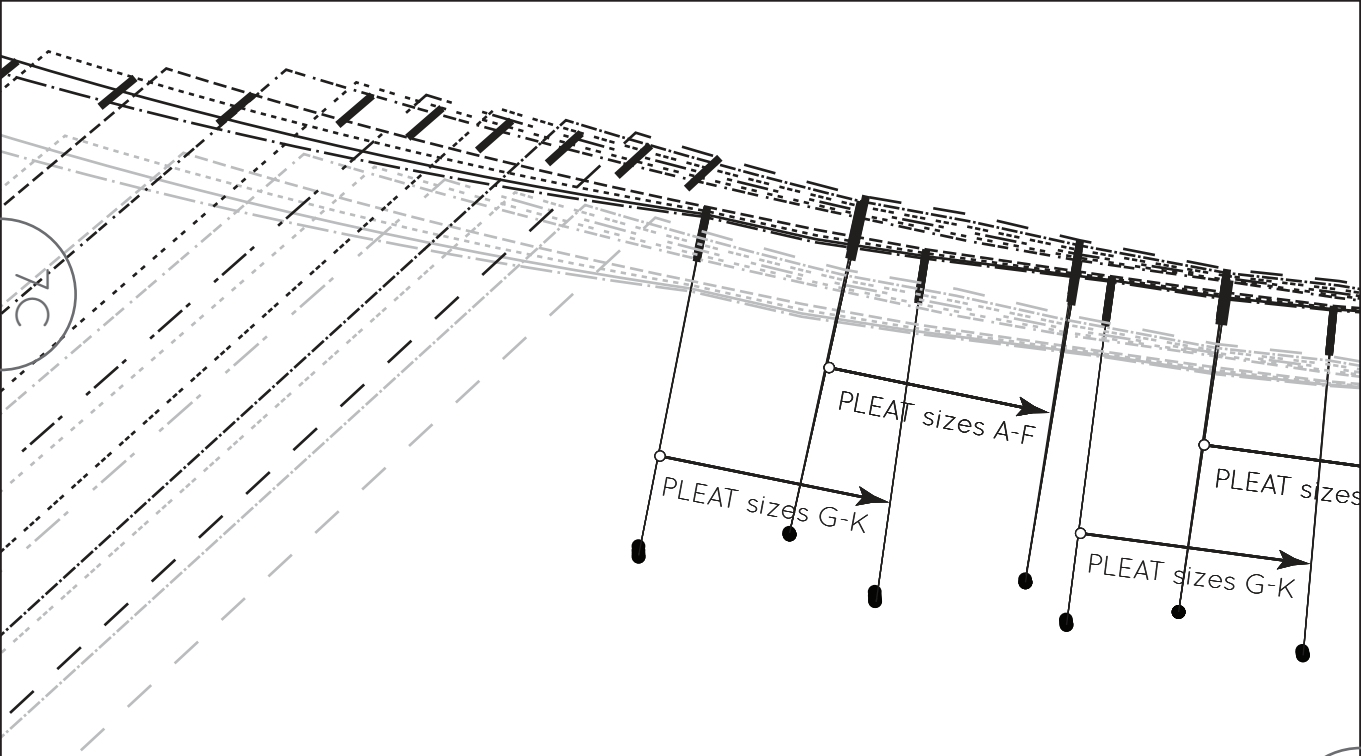
8B

7B

7C



8C

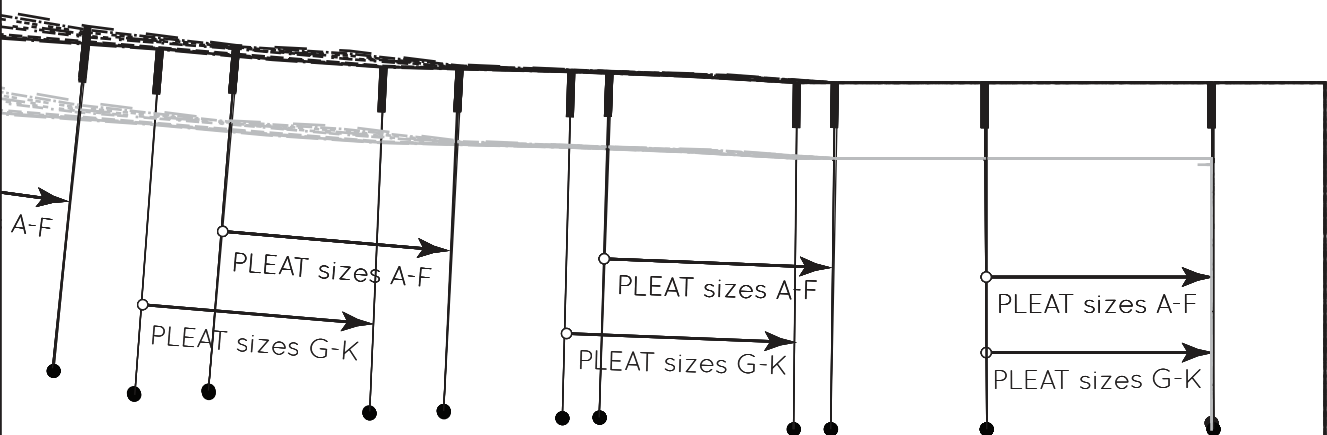


7C

7D

Pepp

8D



7D



ermint

8E

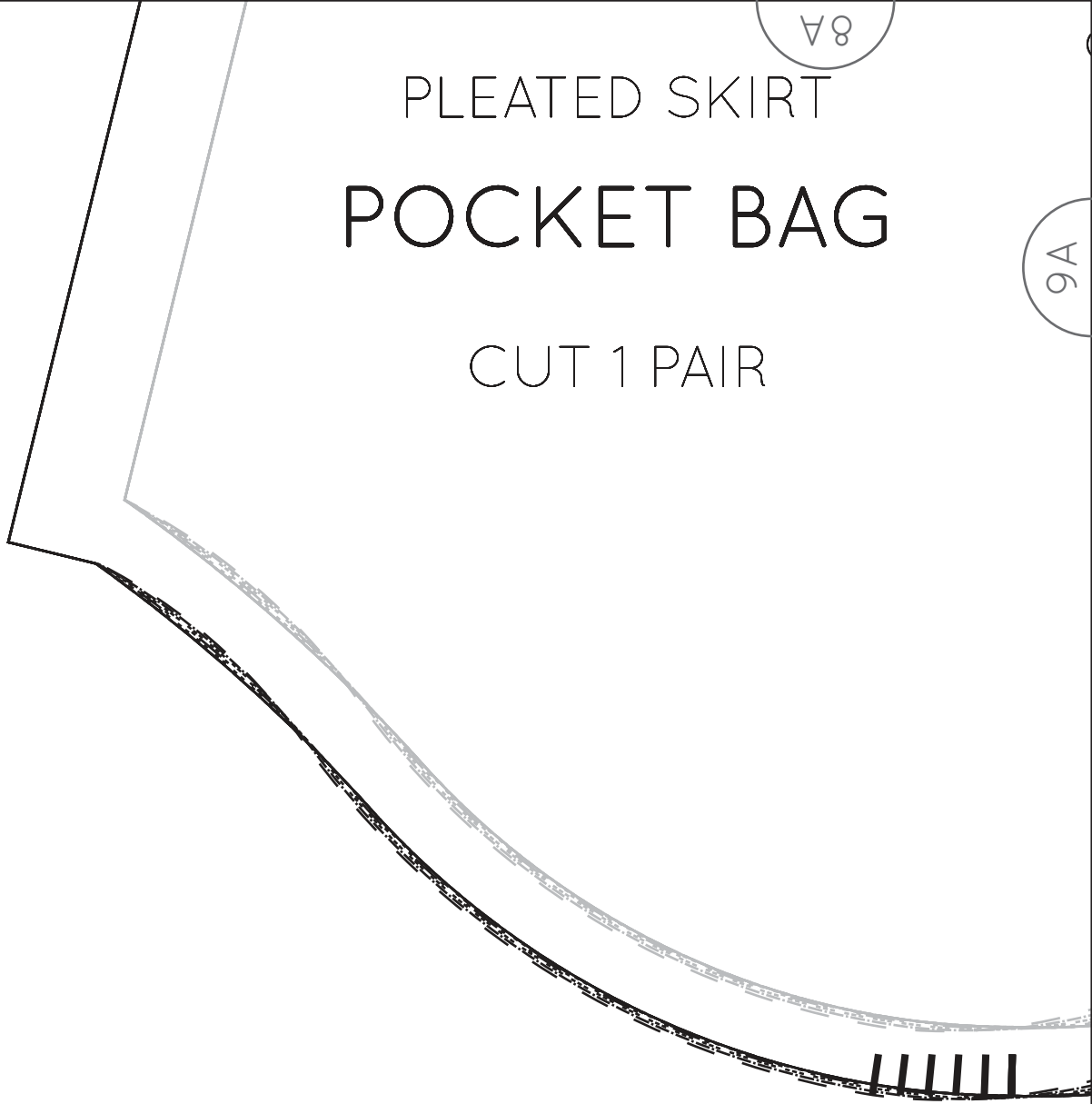
8A

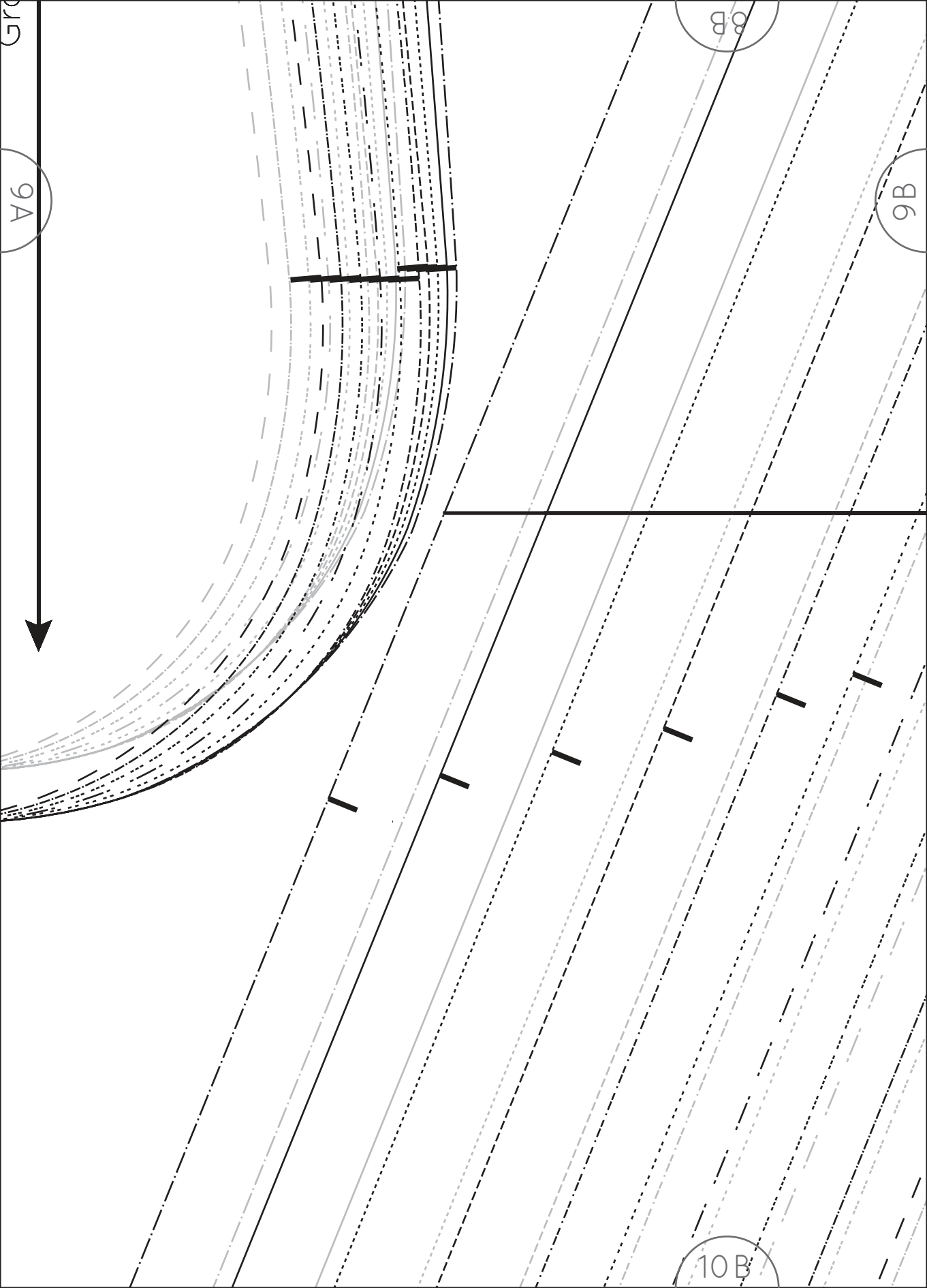
PLEATED SKIRT

POCKET BAG

CUT 1 PAIR

9A





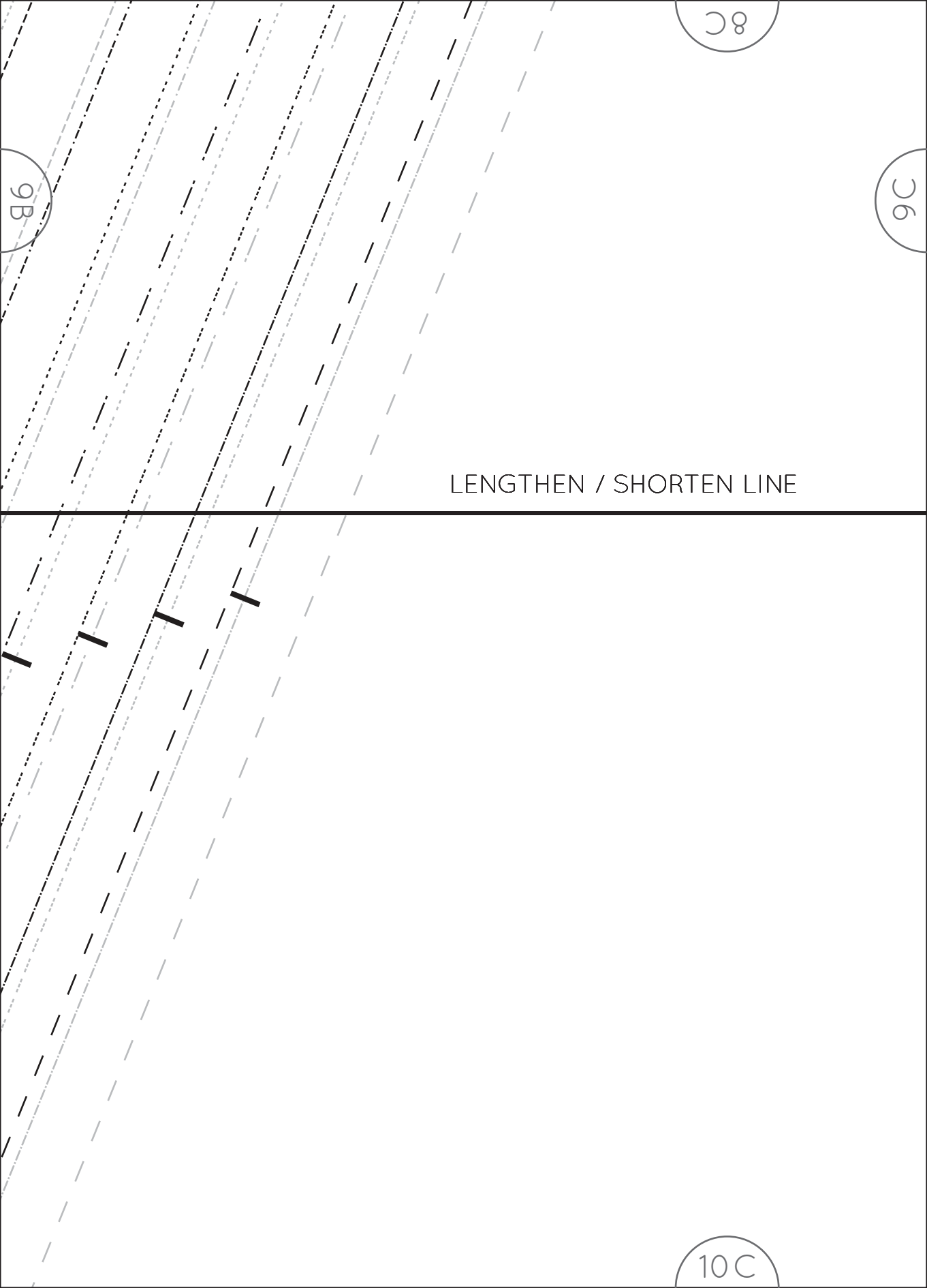
8C

9C

9B

LENGTHEN / SHORTEN LINE

10C



18

9C

PLEATED

FR

CUT

9D

10D

ED SKIRT

ONT

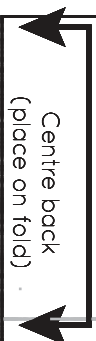
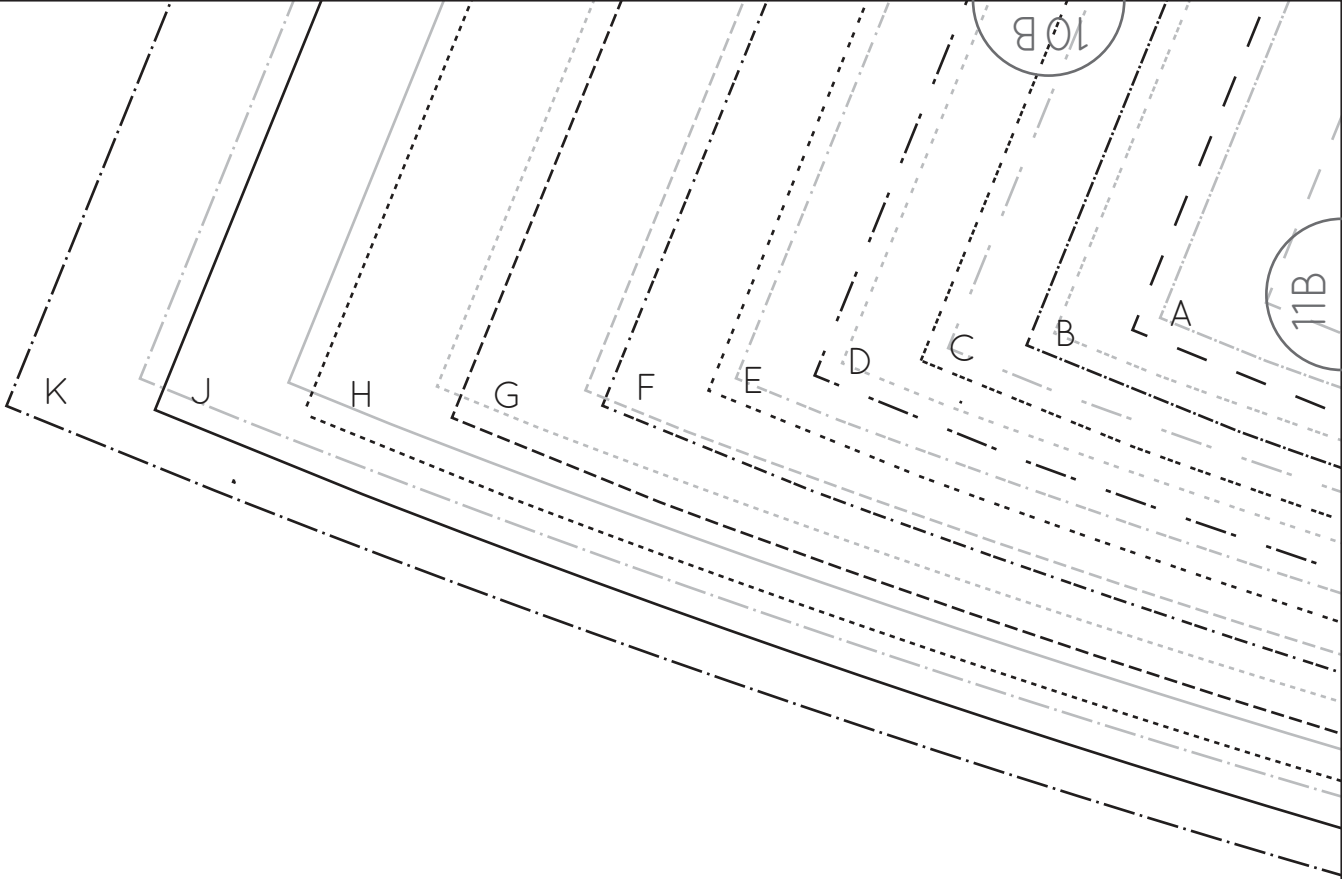
1 PAIR

8E

9D

Grainline

10E

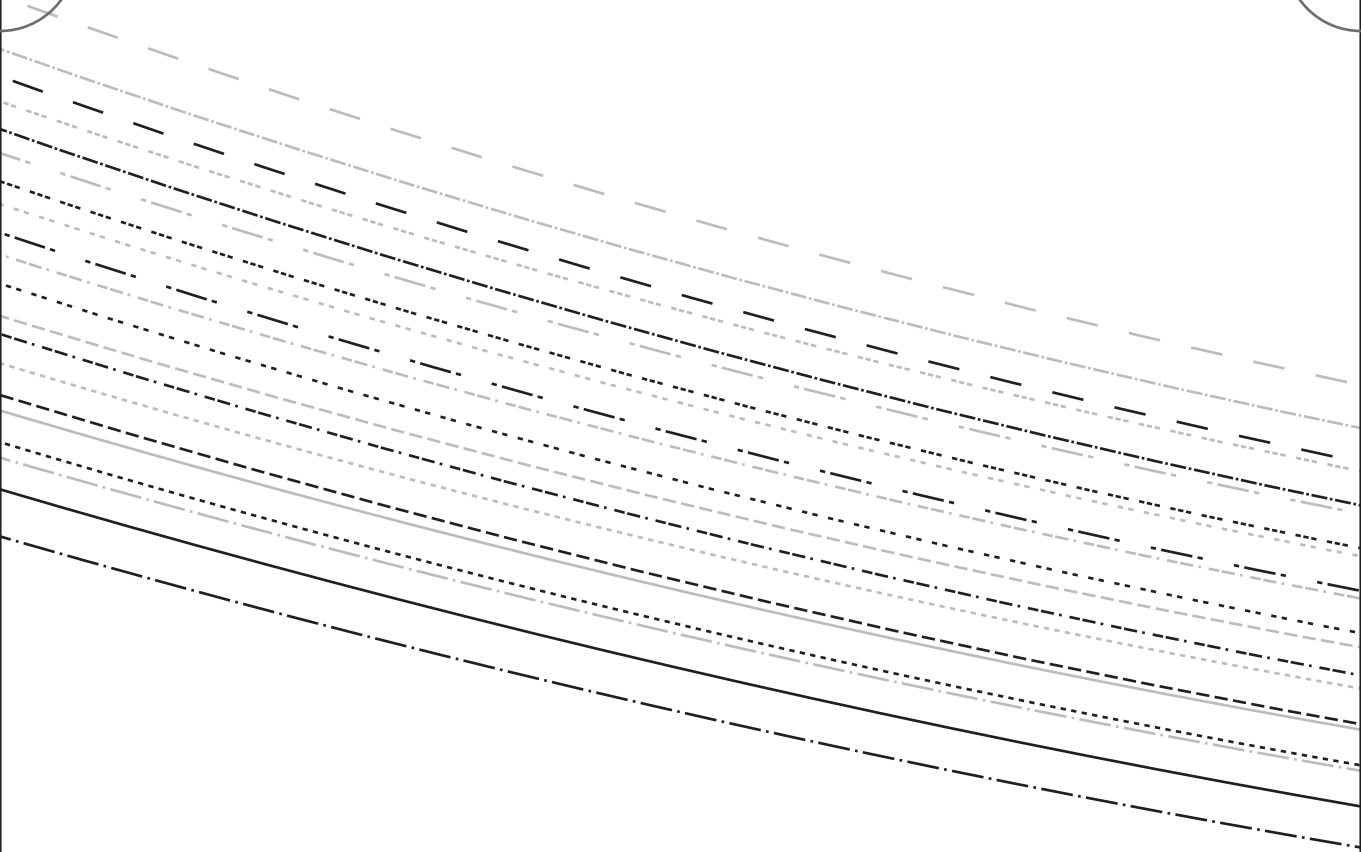


Grainline

PLEATED SKIRT
HEM FACING - CENTRE BACK

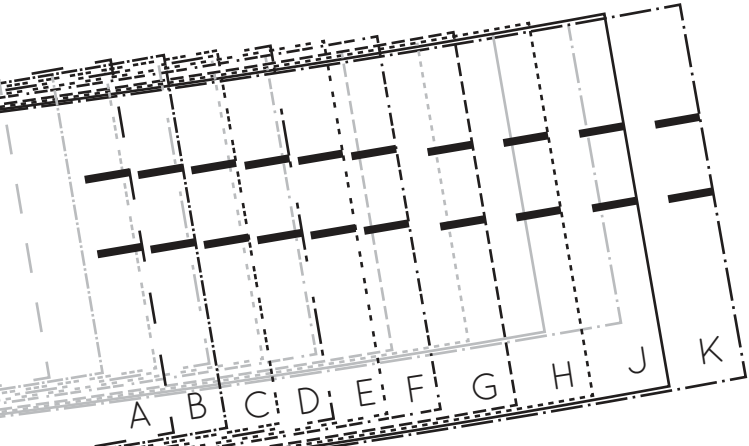
CUT 1 ON FOLD

Pep



permint

CLOTHINGWEAR + SEWING PATTERNS
 in the
olds
 HANDMADE IN SYDNEY

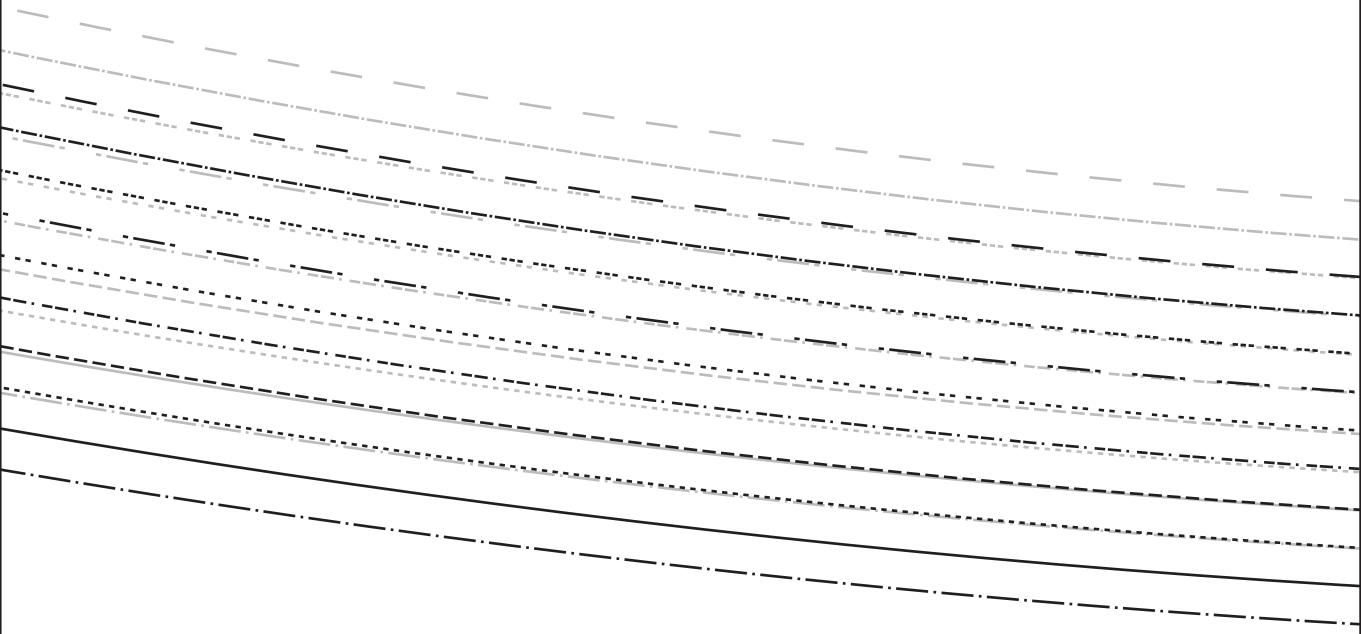


A B C D E F G H J K

10D

11D

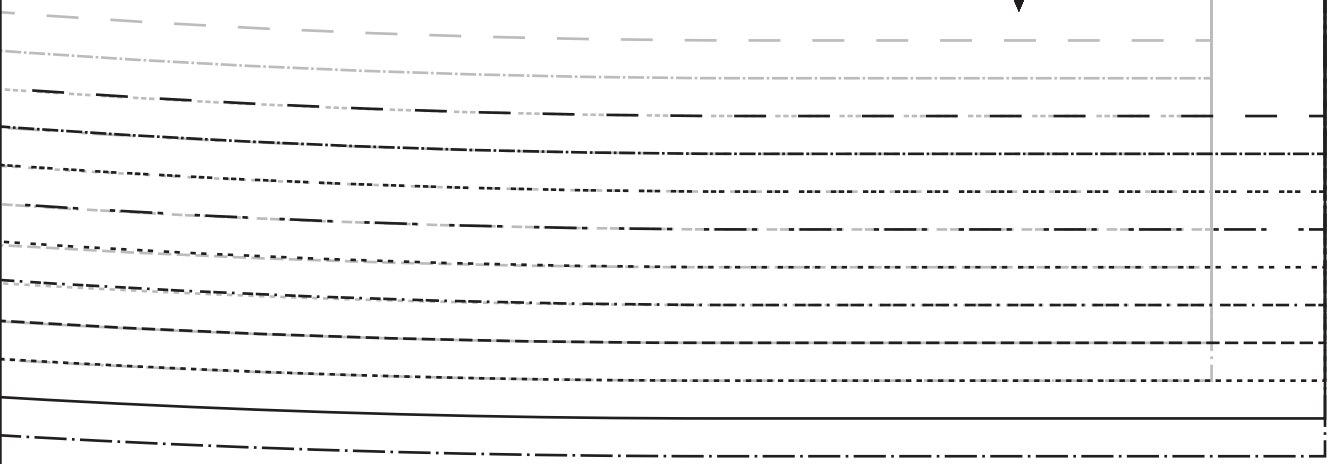
11C

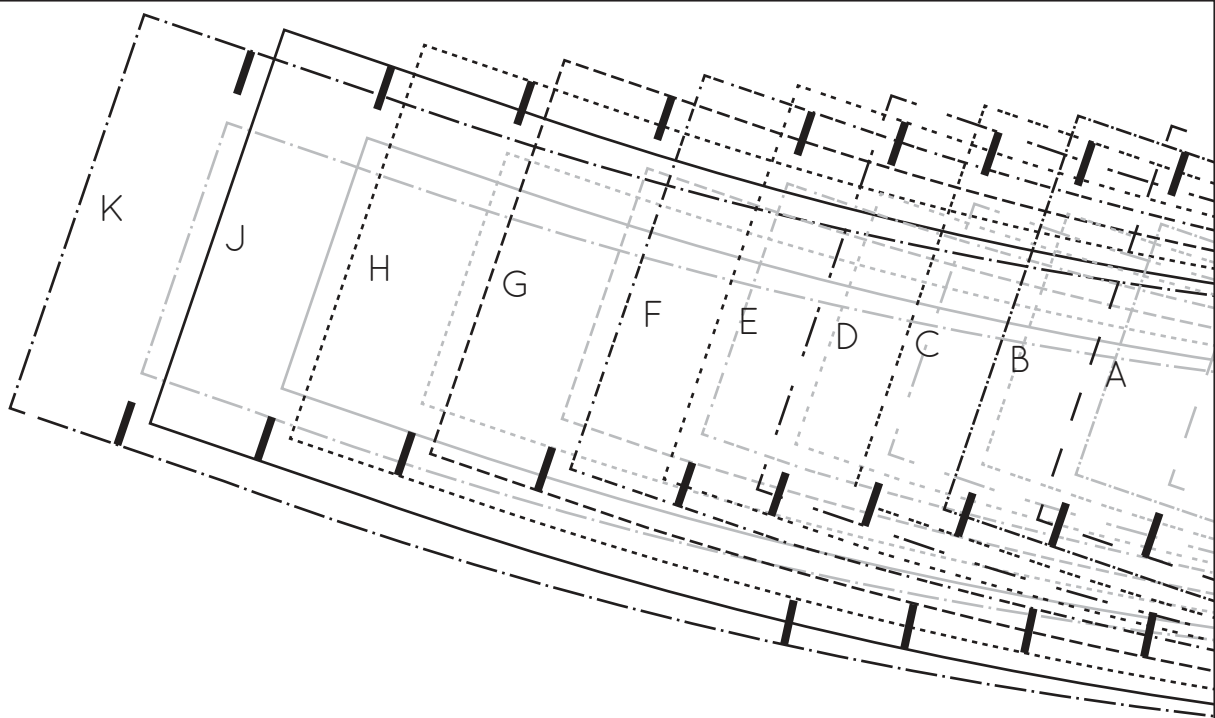


10E

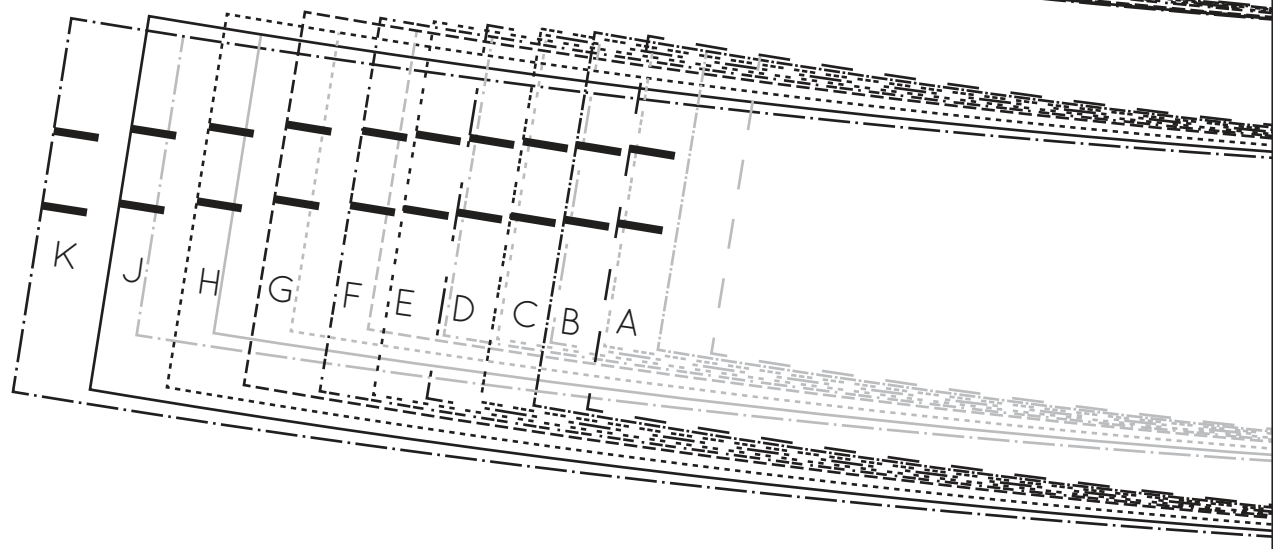
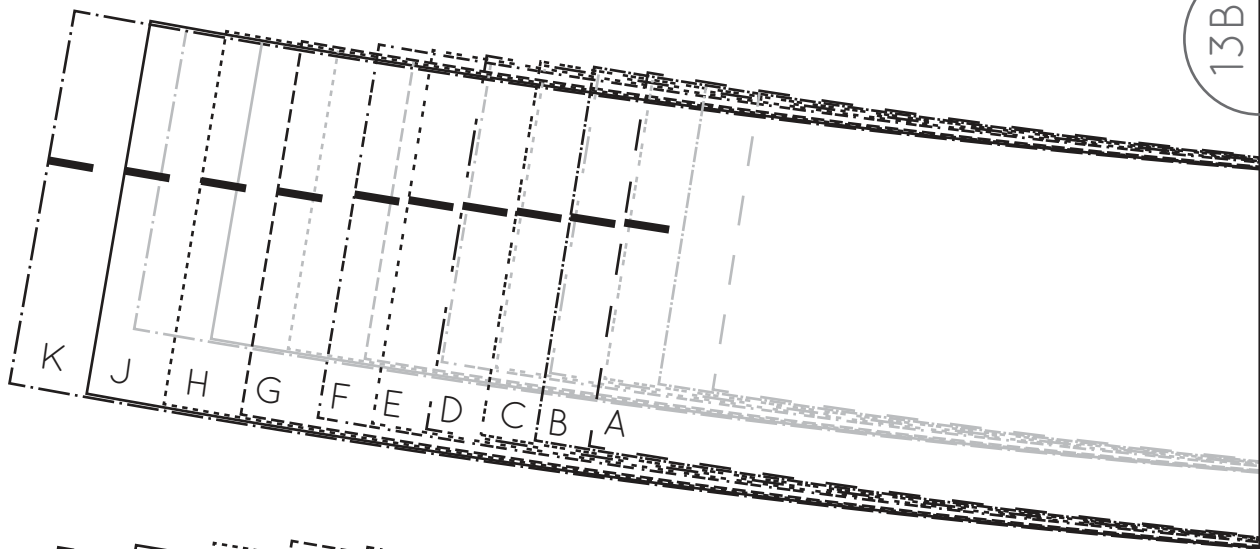


11D





13B



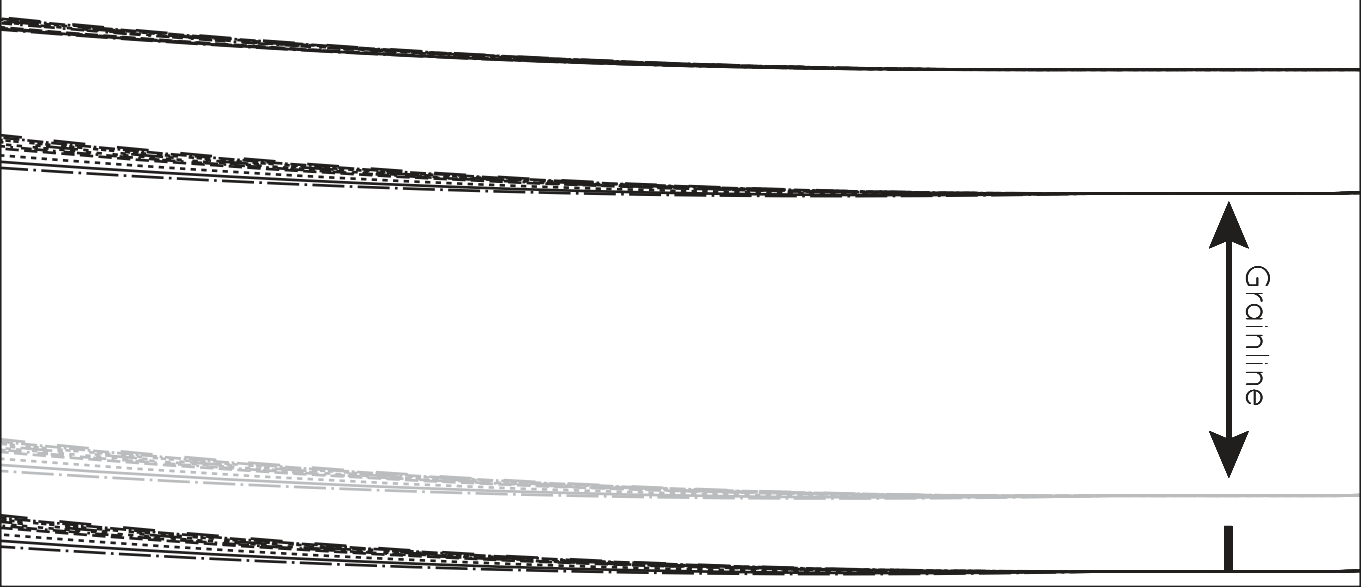


13B

Peppermint



PLEATED SKIRT
HEM FACING - CENTRE FRONT
CUT 1 ON FOLD



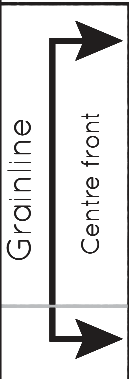
13C

Peppermint

PLEATED SKIRT

FRONT WAISTBAND

CUT 1 PAIR



PLEATED SKIRT

BACK WAISTBAND

CUT 2 PAIRS

Peppermint



Peppermint

PLEATED SKIRT

HEM FACING - SIDE

CUT 1 PAIR



