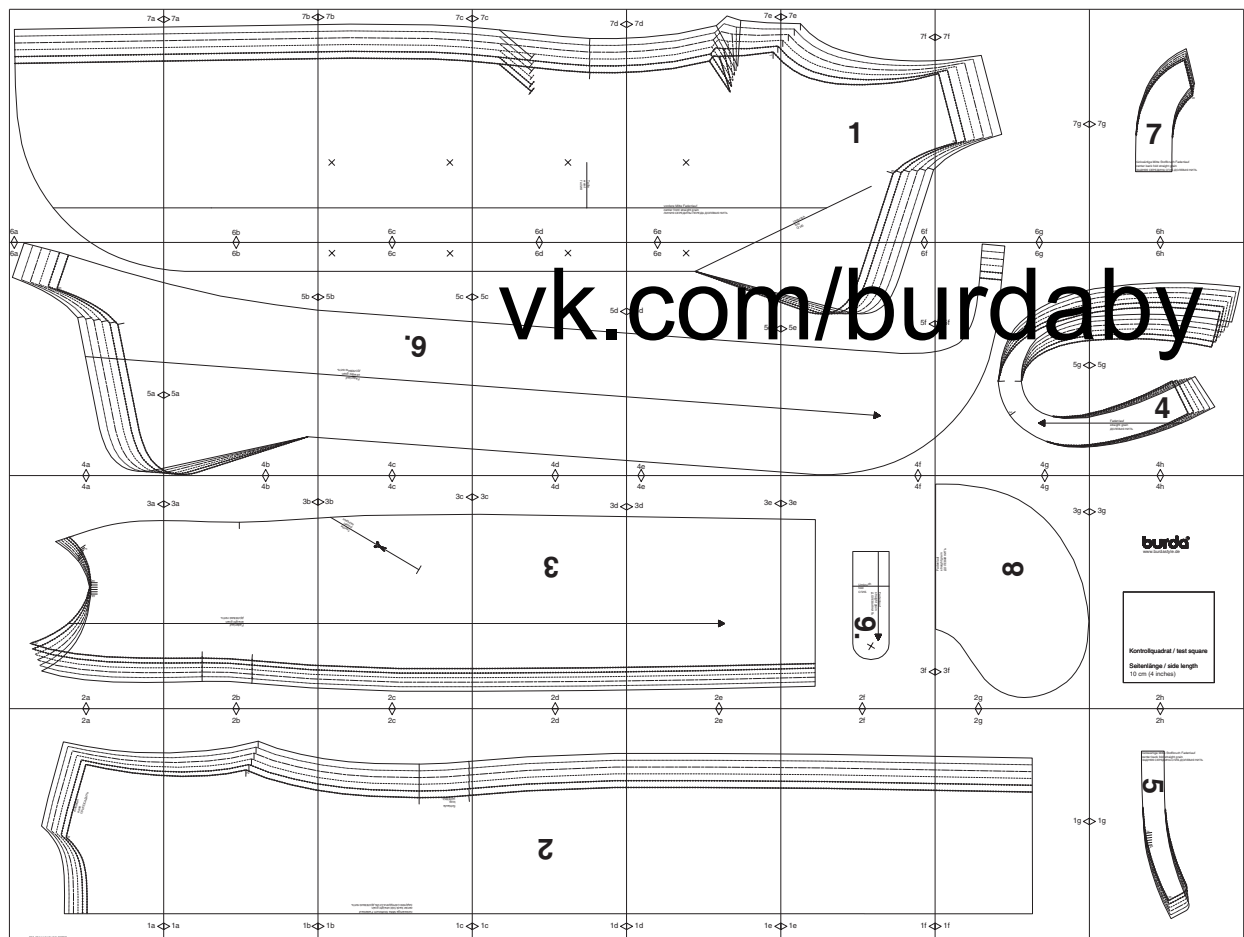


# burda Download-Schnitt

Modell 104 Burda Style 04/2018

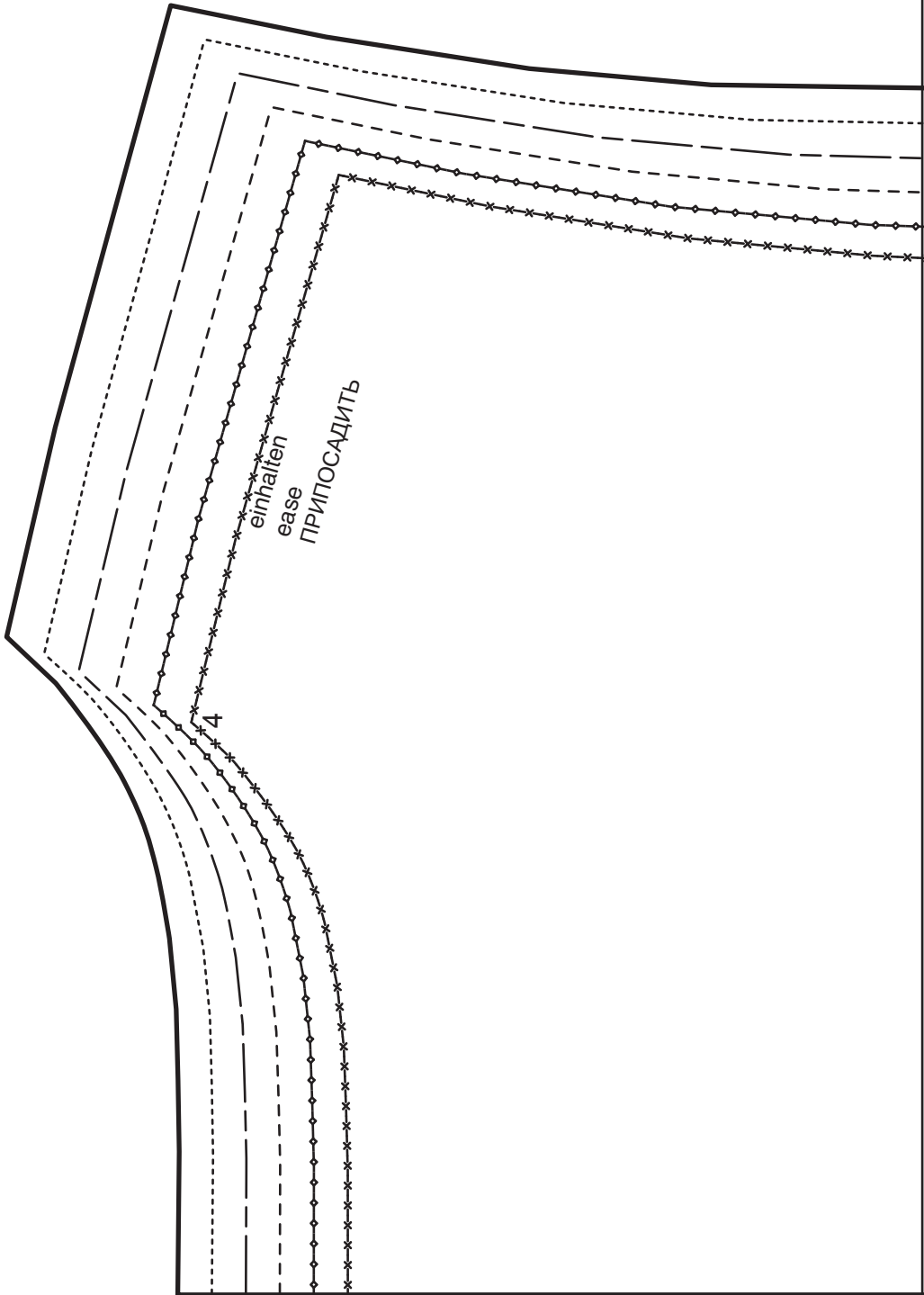


Copyright 2017 by Verlag Aenne Burda GmbH & Co. KG, Hubert-Burda Platz 2, D-77652 Offenburg

Sämtliche Modelle, Schnittteile und Zeichnungen stehen unter Urheberschutz, gewerbliches Nacharbeiten ist untersagt.

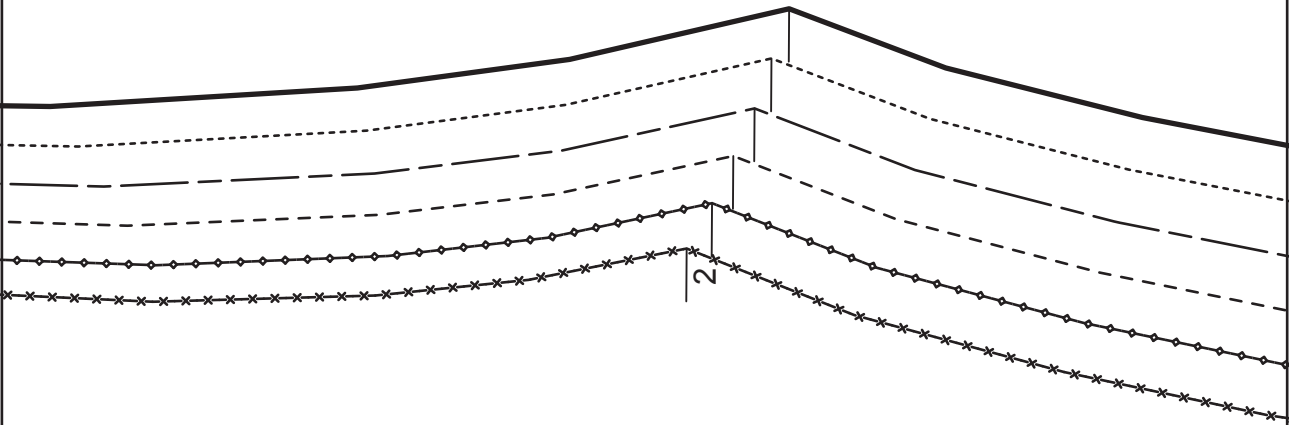
Der Verlag haftet nicht für Schäden, die durch unsachgemäße Handhabung des Schnitts, der Materialien, unsachgemäße Ausführung der Tipps und Anleitungen oder unsachgemäße Nutzung der Modelle entstehen.

2a



1a

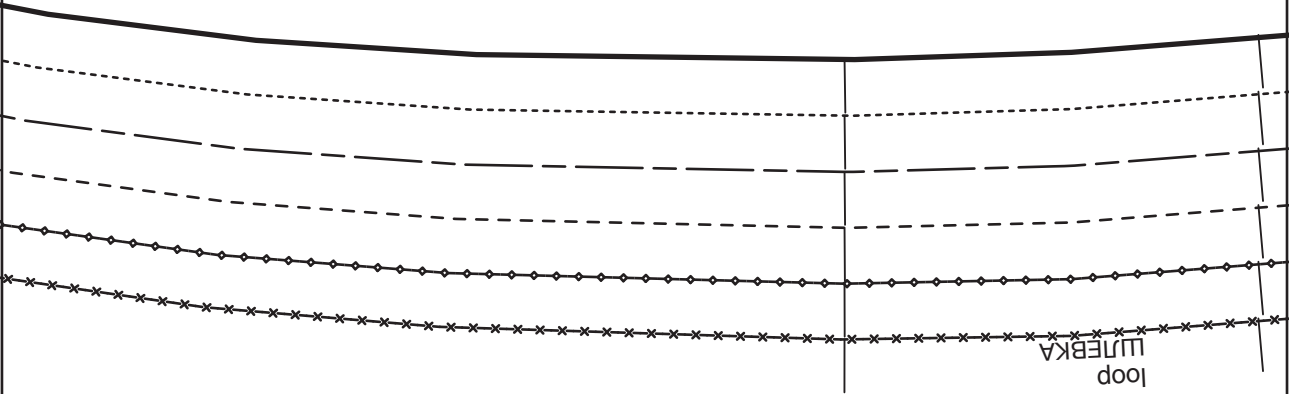
2b



1a

1b

2c



Schlaufe  
loop  
шляпка

rückwärtige Mitte Stoffruch Fadenlauf  
center back fold straight grain  
ЗАДНЯЯ СЕРЕДИНА С ТИМ ДОЛБЕВАЯ НИТЬ

1b

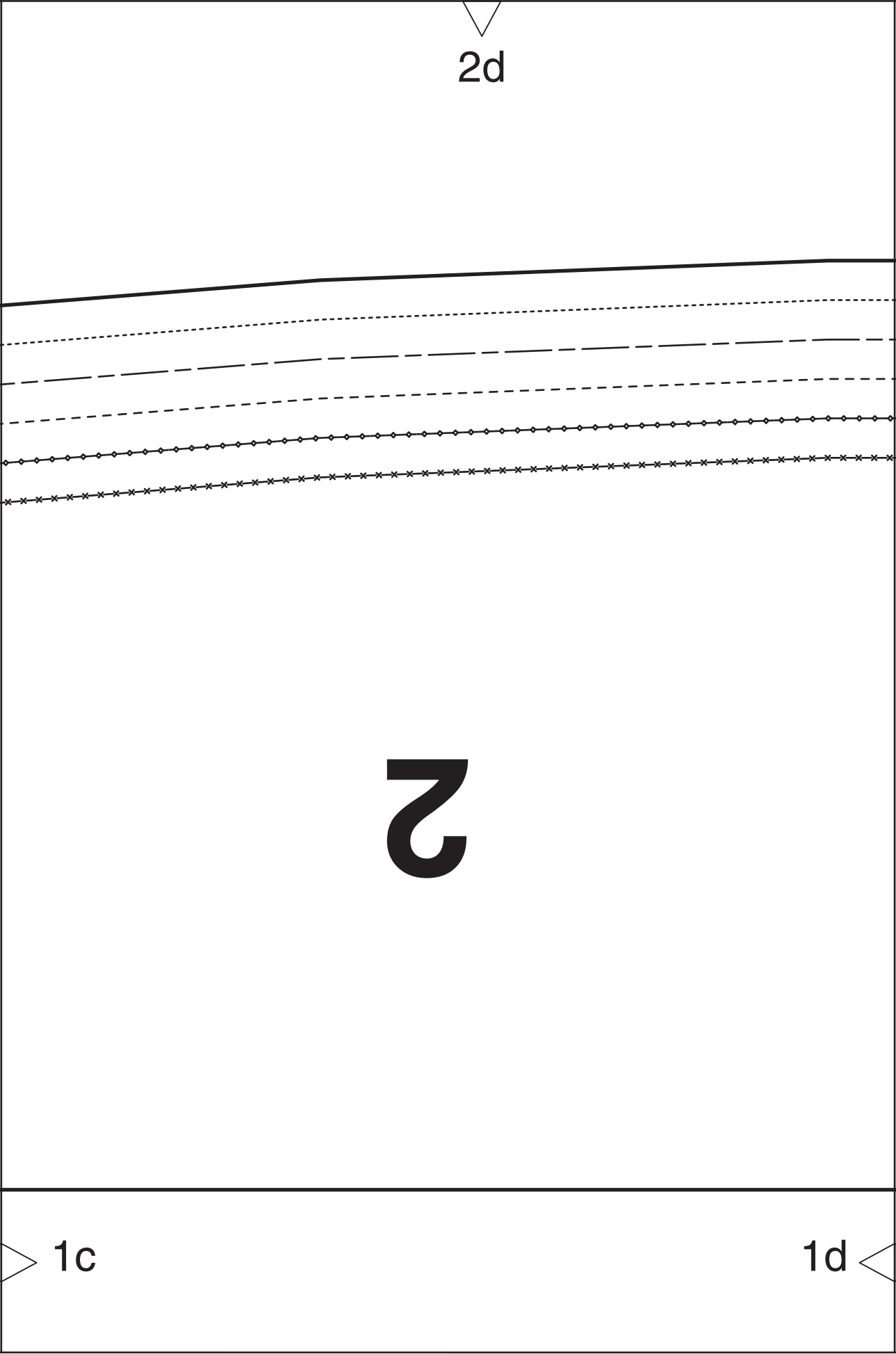
1c

2d

2

1c

1d

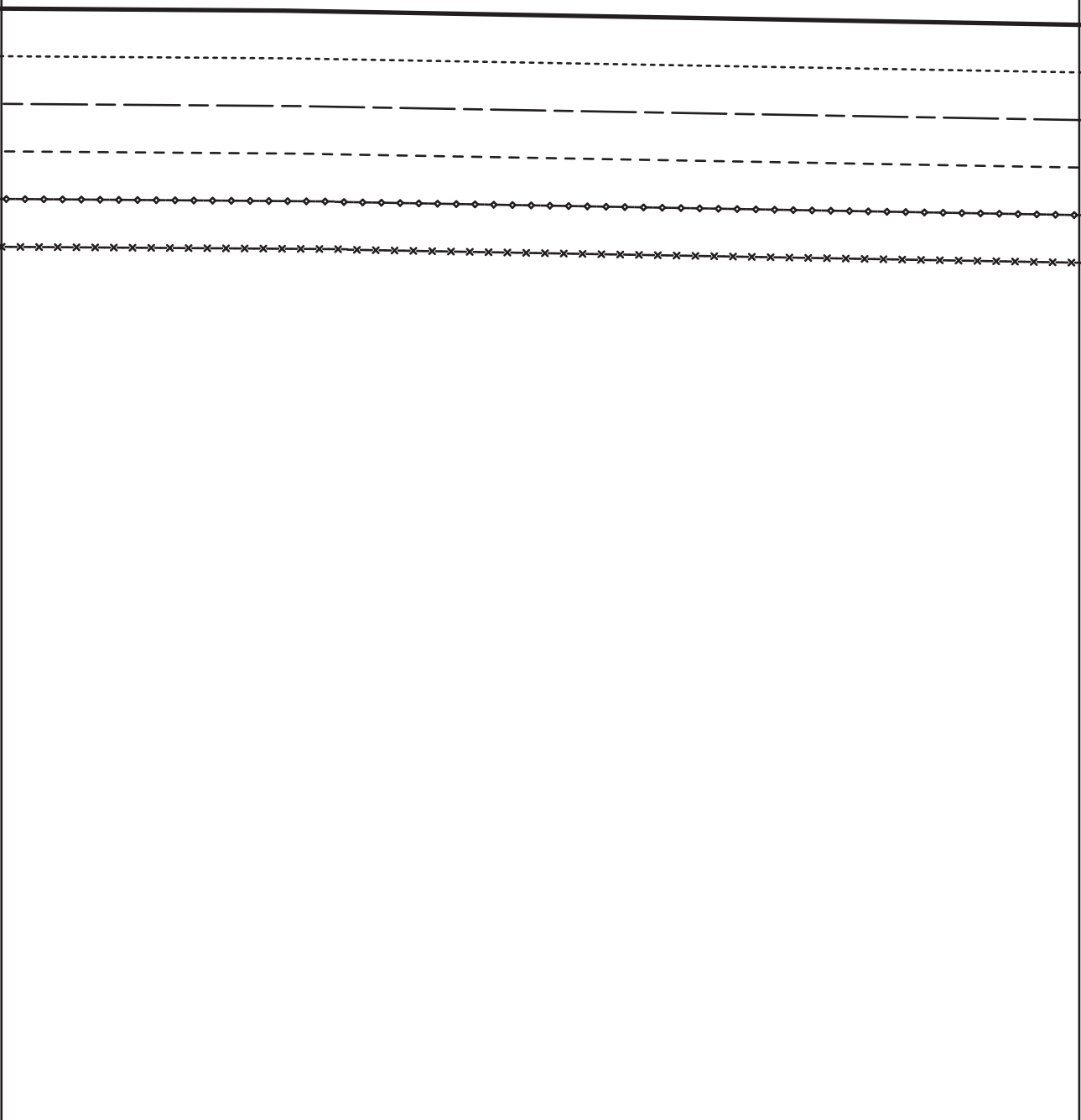


2e

1d

1e

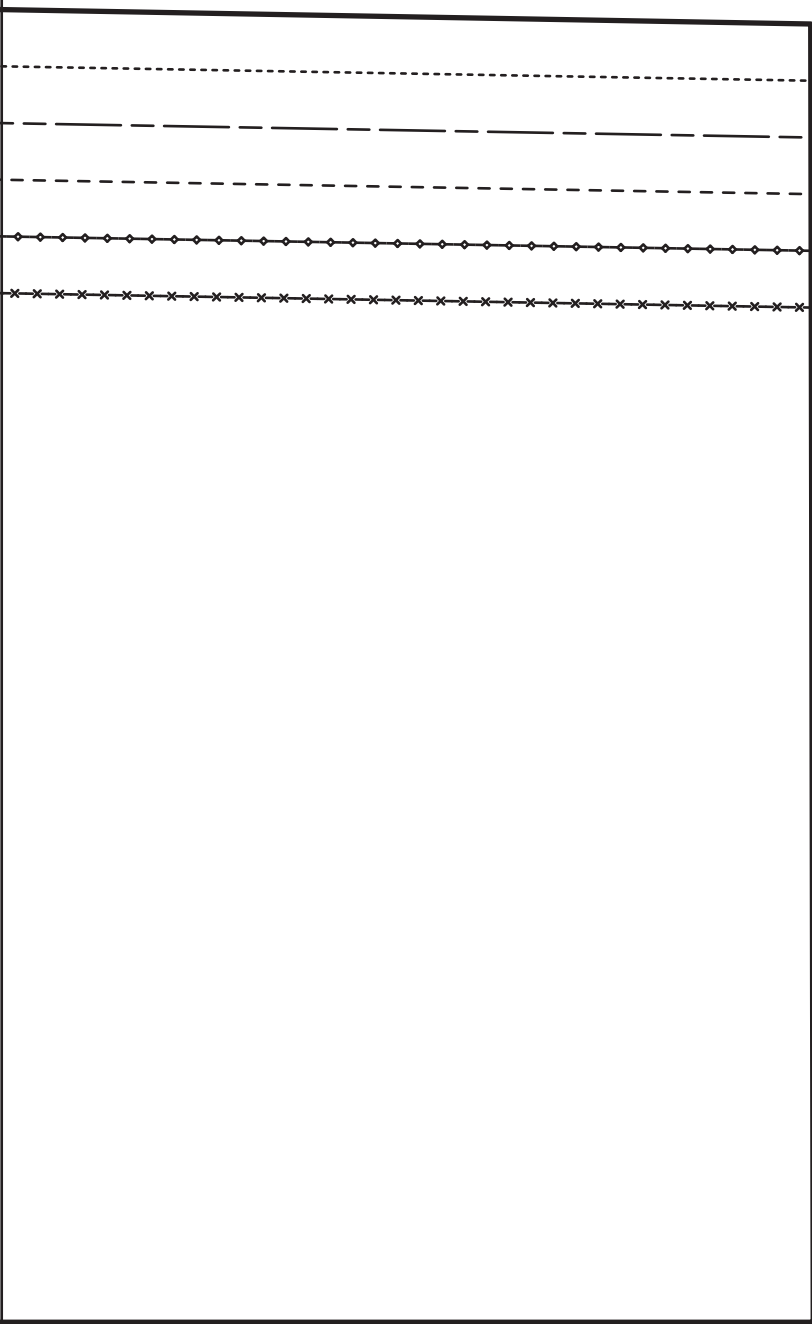
2f



1e

1f

2g



1g

1f



2h

rückwärtige Mitte Stoffbruch Fadenlauf  
center back fold straight grain  
ЗАДНЯЯ СЕРЕДИНА СГИБ ДОЛЕВАЯ НИТЬ

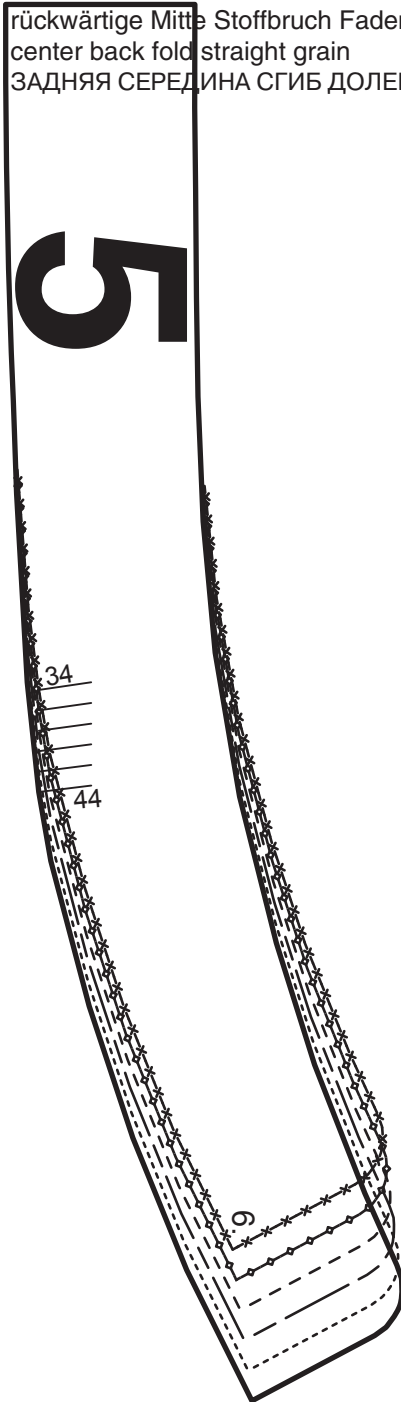
9

1g

34

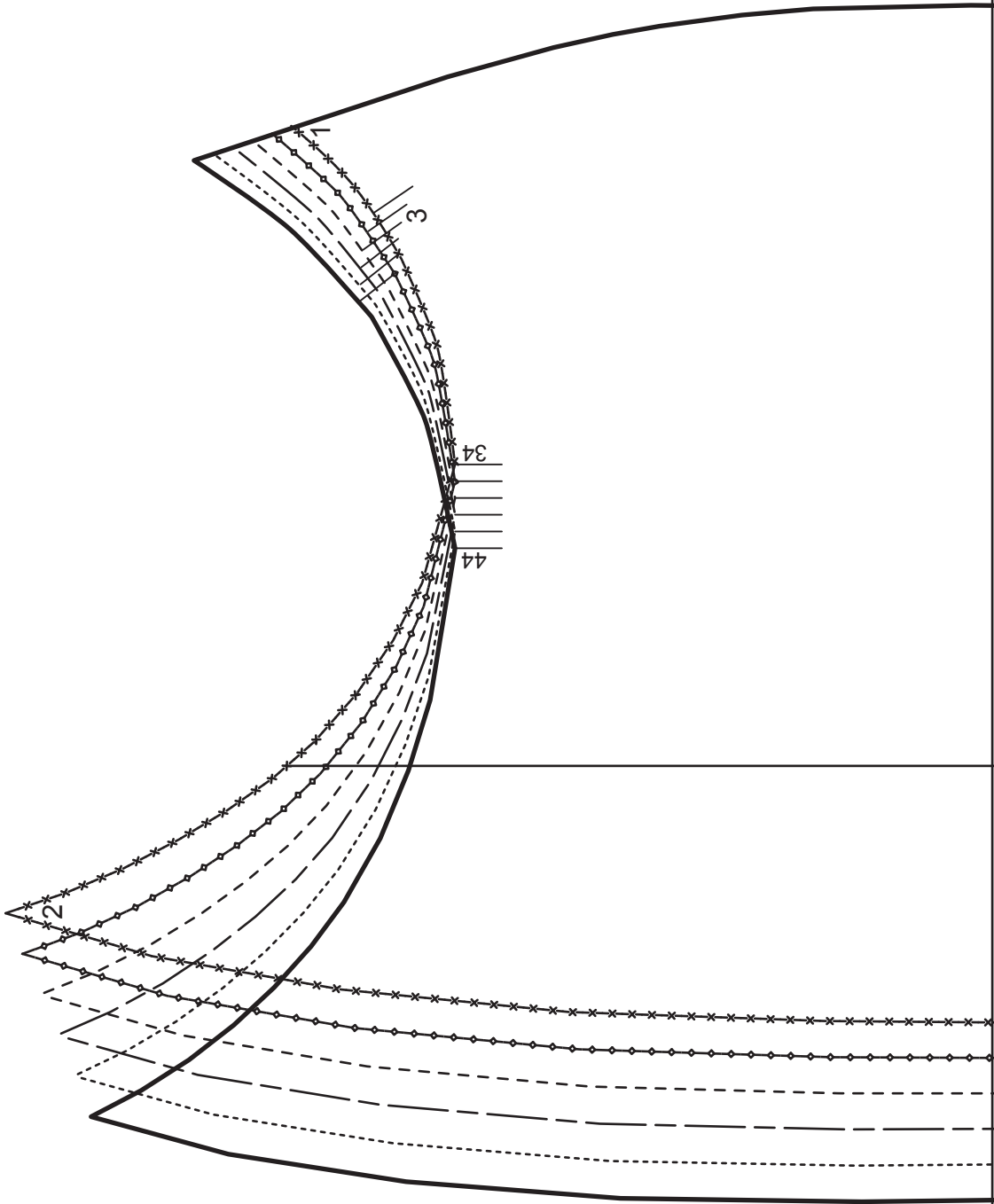
44

9

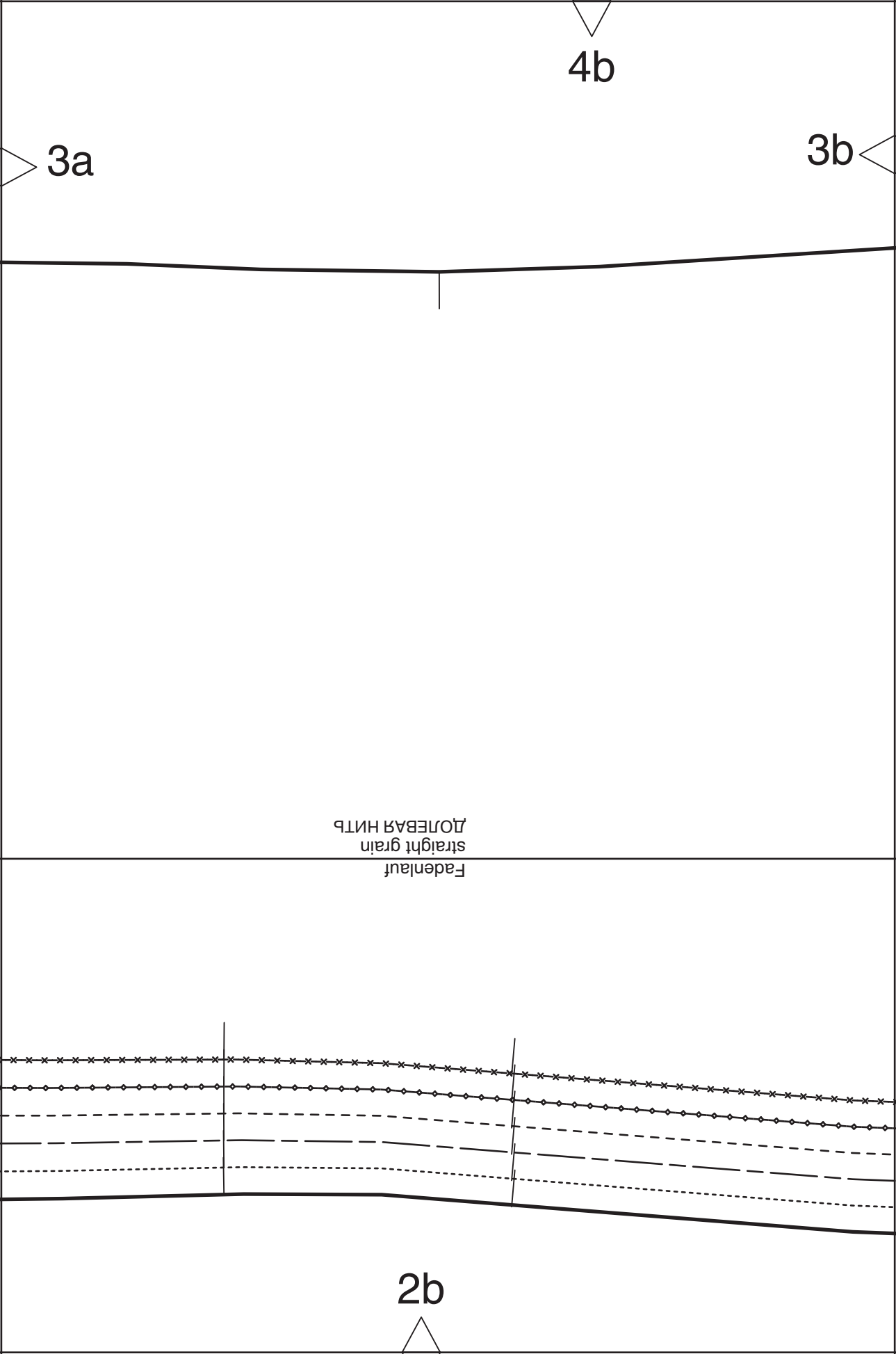


4a

3a



2a



4b

3a

3b

ДОЛБЕВАЯ НИТЬ  
straight grain  
Fadenlauf

2b

4c

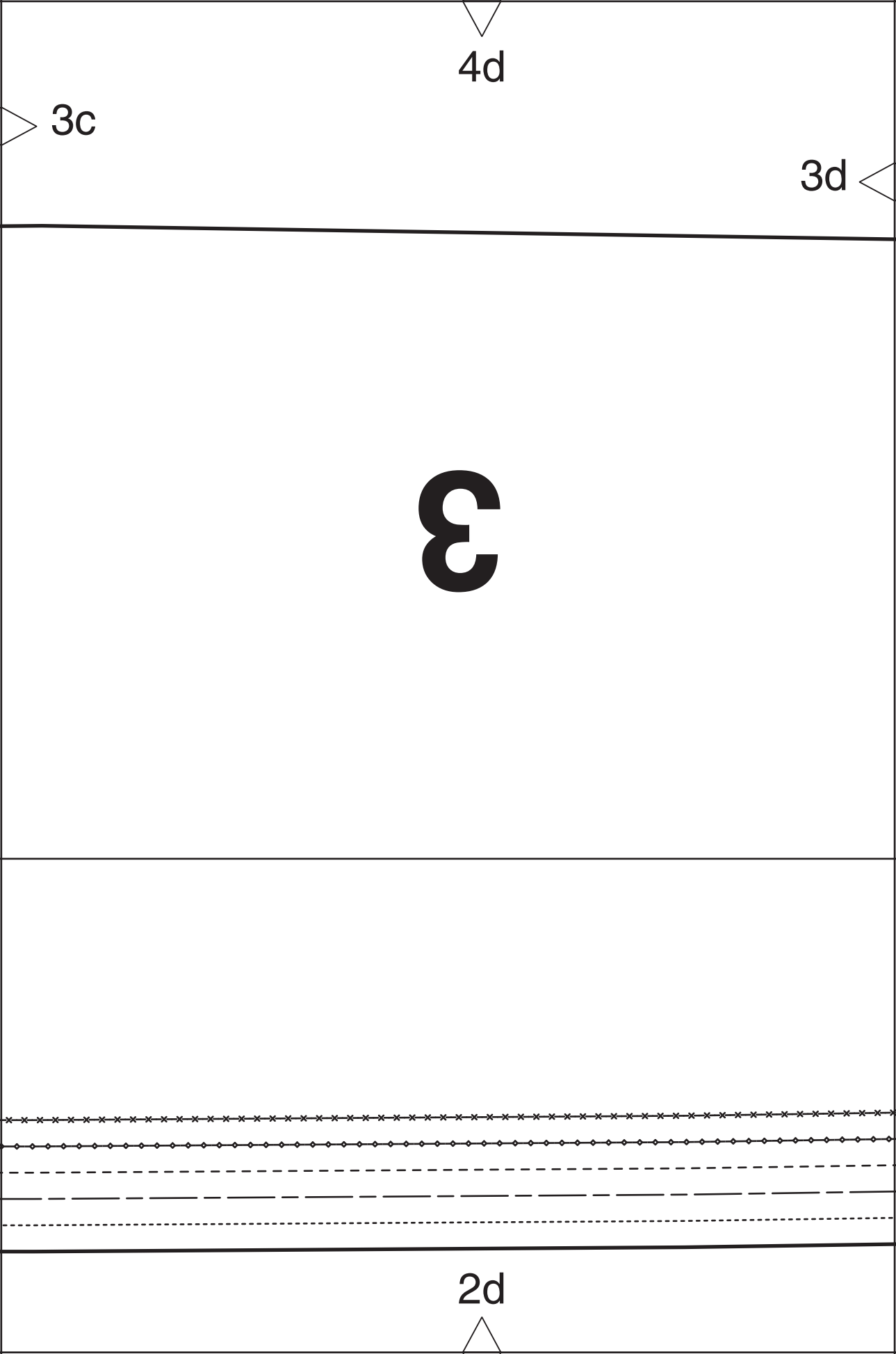
3b

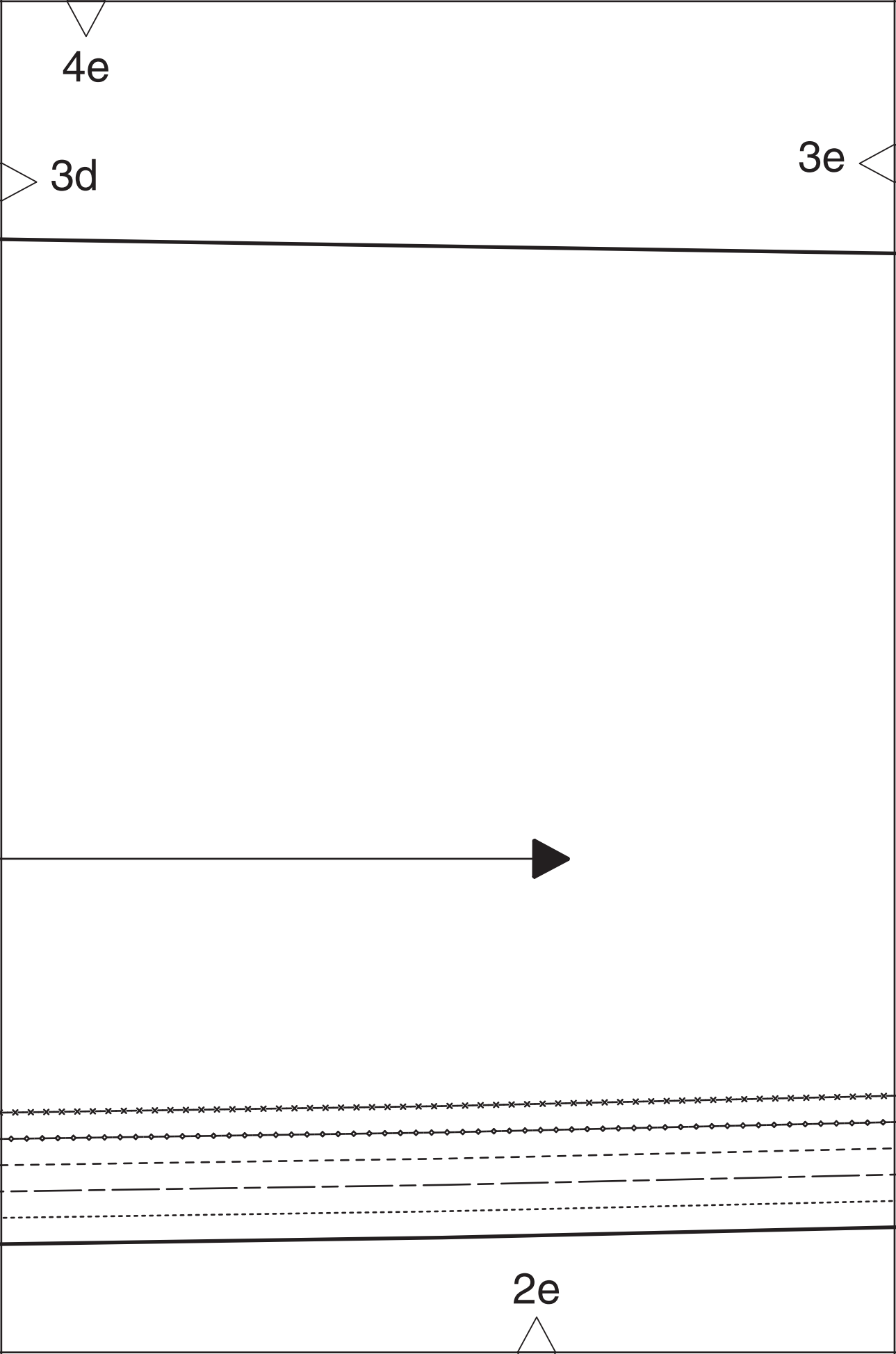
3c

Tasche  
pocket  
КАРМАШ



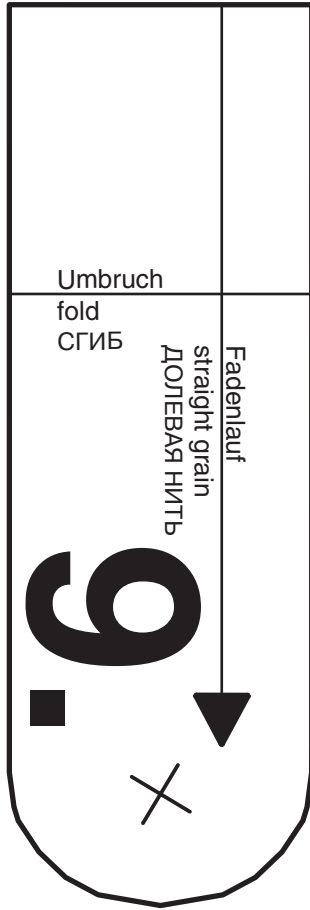
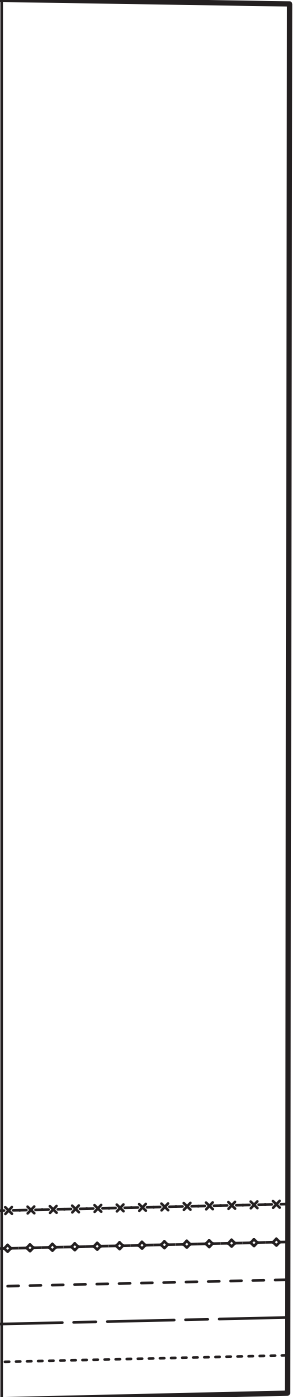
2c





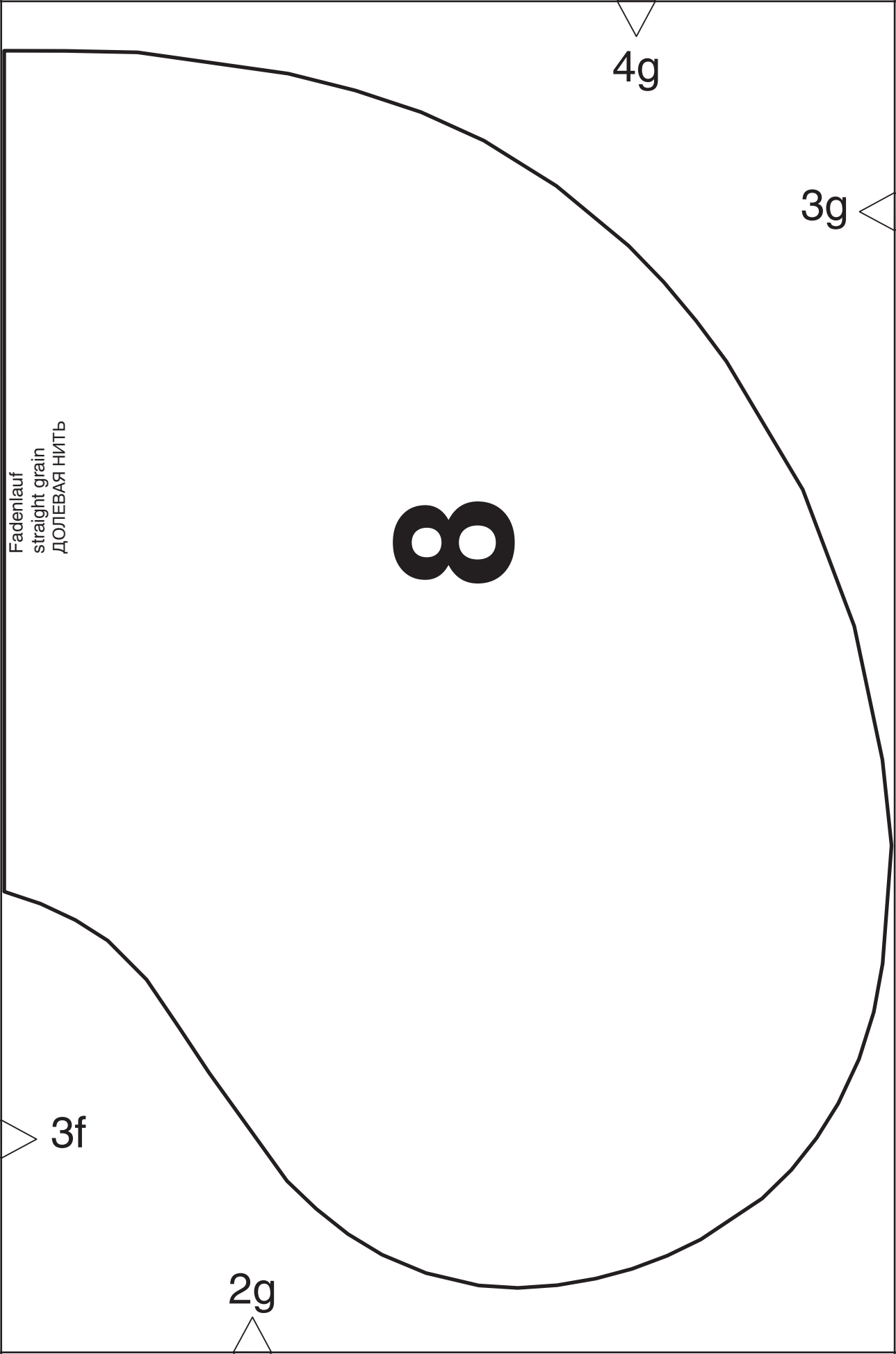
4f

3e



3f

2f



4g

3g

**8**

Fadenlauf  
straight grain  
ДОЛЕВАЯ НИТЬ

3f

2g



4h

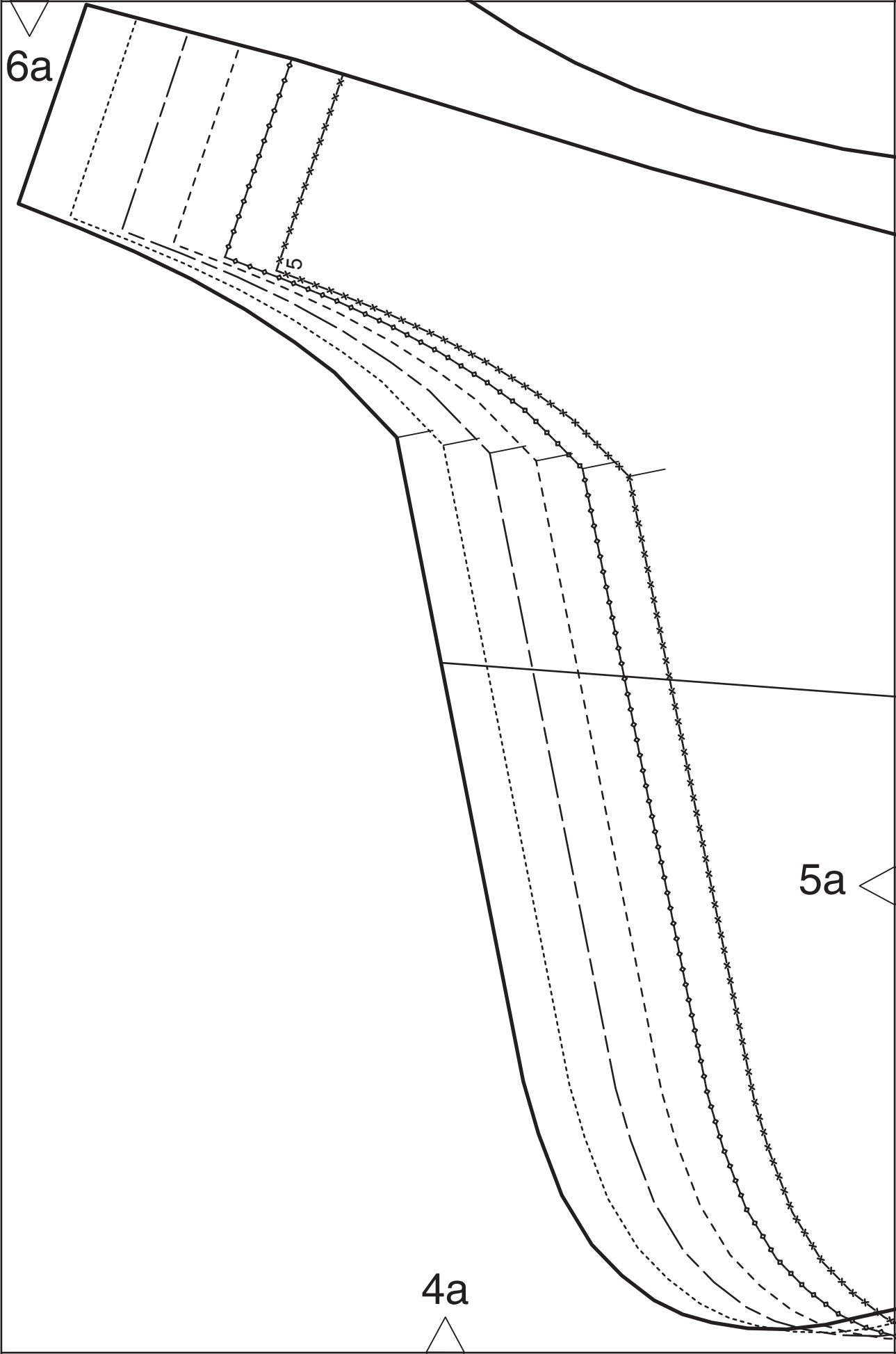
3g

**burda**<sup>®</sup>  
www.burdastyle.de

Kontrollquadrat / test square

Seitenlänge / side length  
10 cm (4 inches)

2h

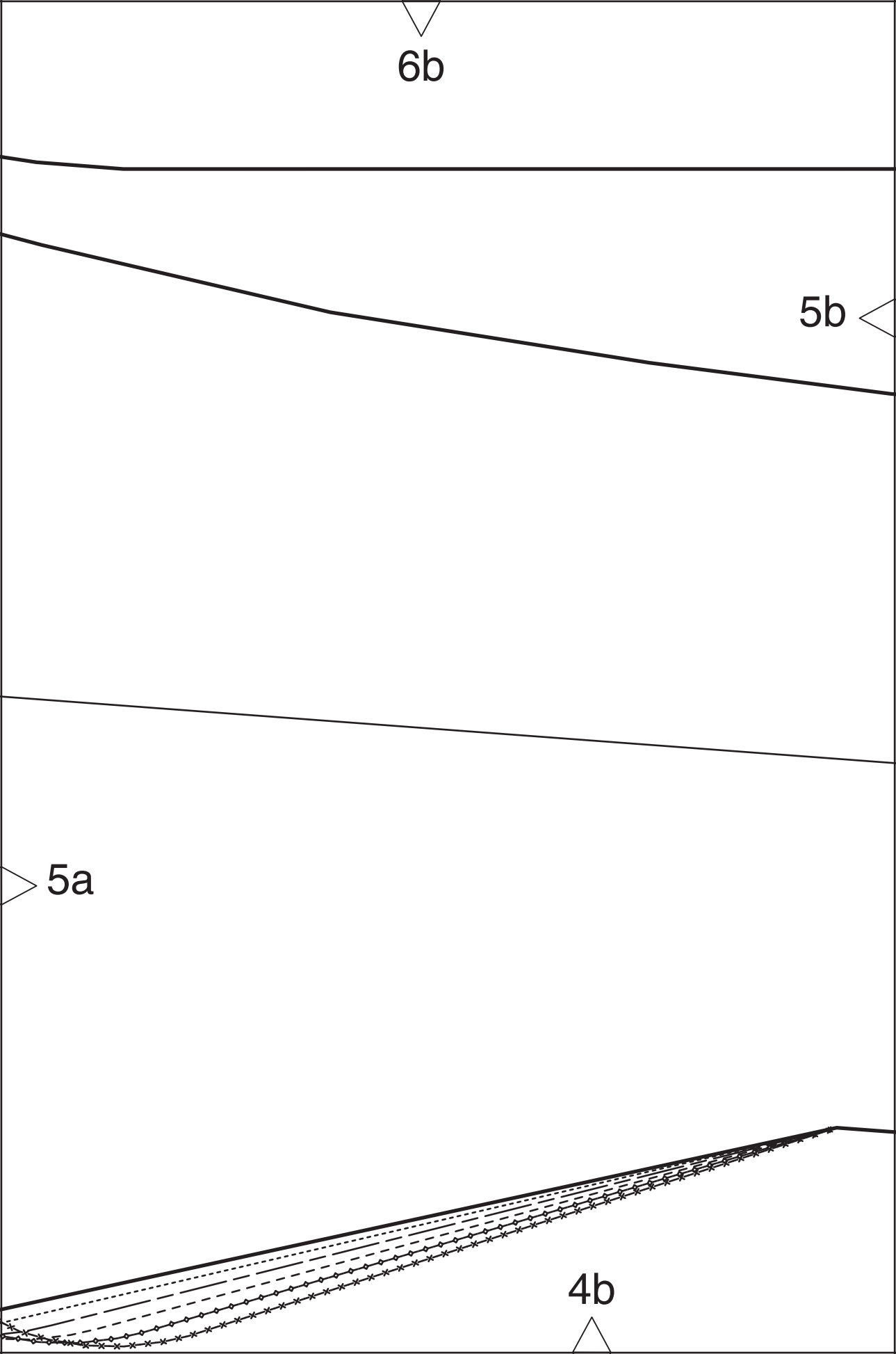


6b

5b

5a

4b





6c



5b

5c

9

Fadenlauf  
straight grain  
ДОЛБЕВАЯ НИТЬ

4c

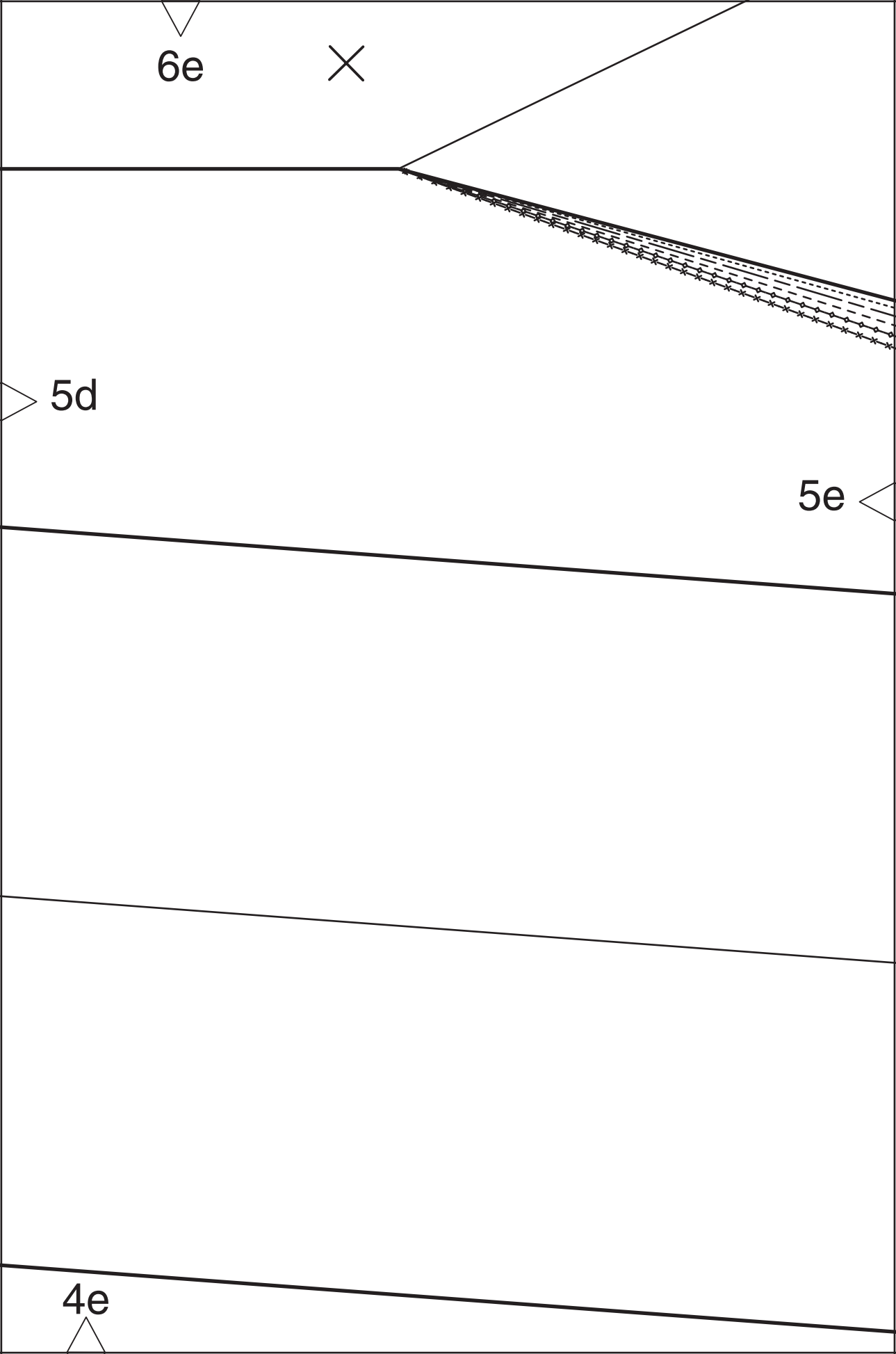
6d

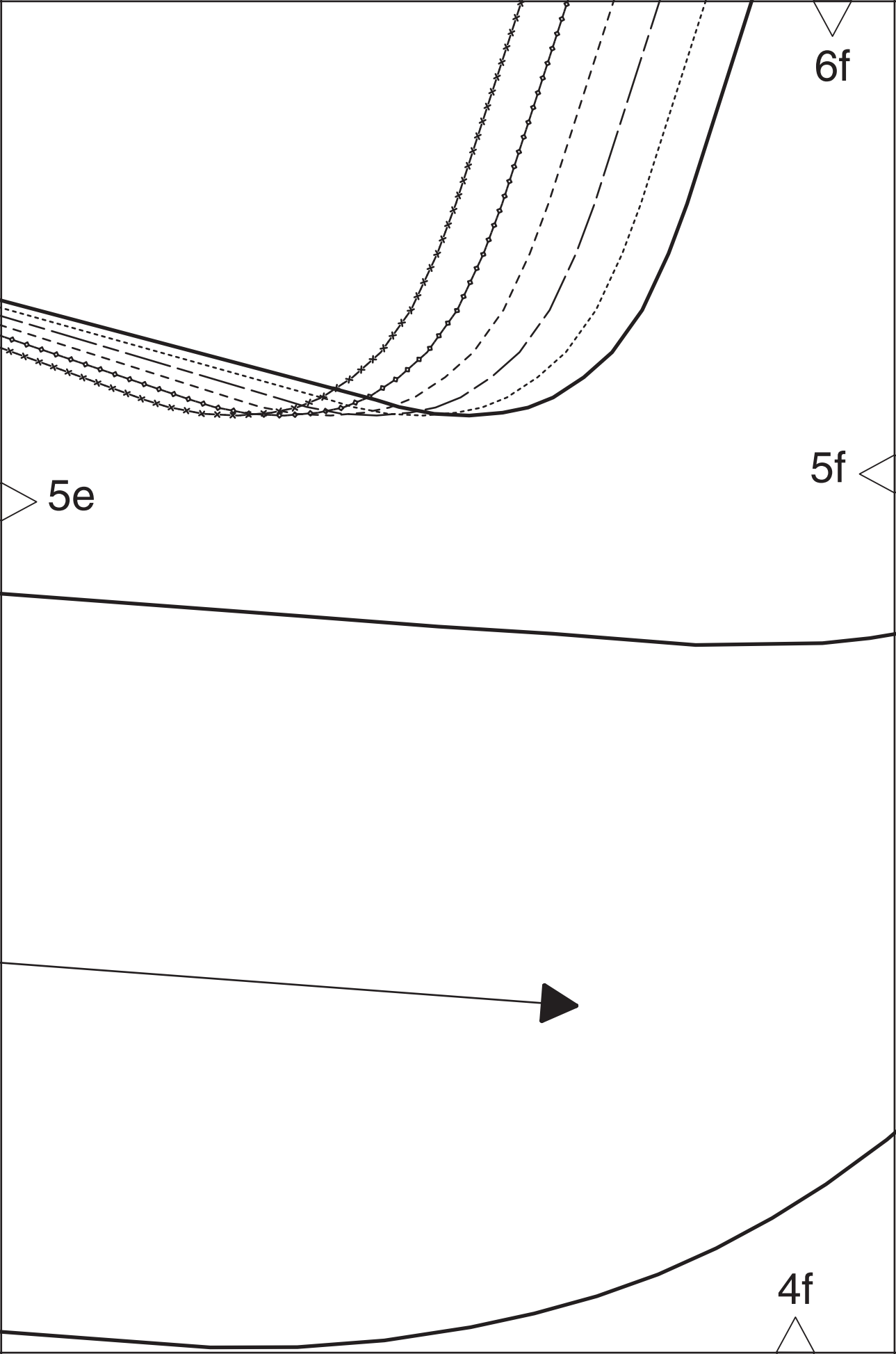


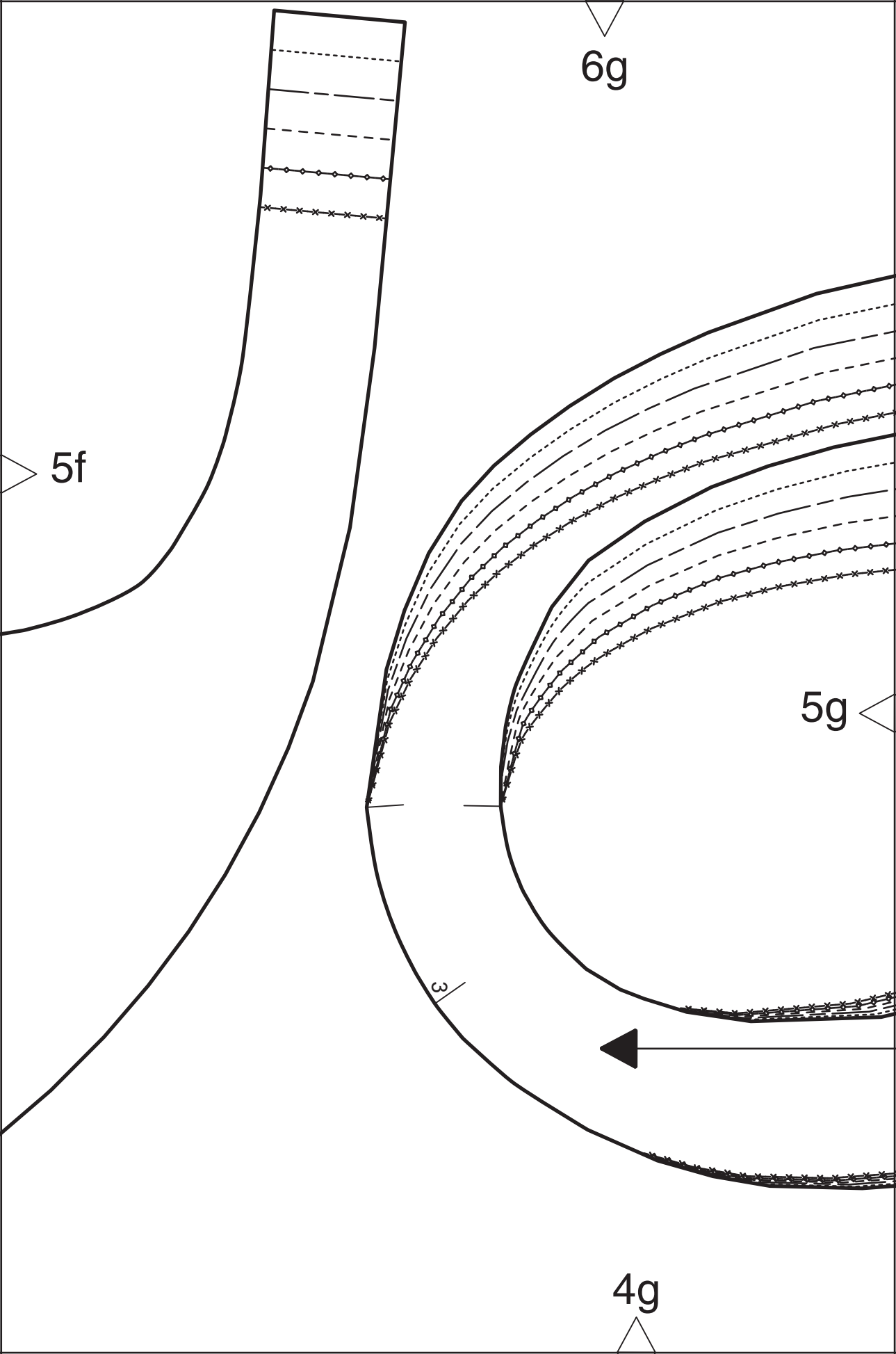
5c

5d

4d

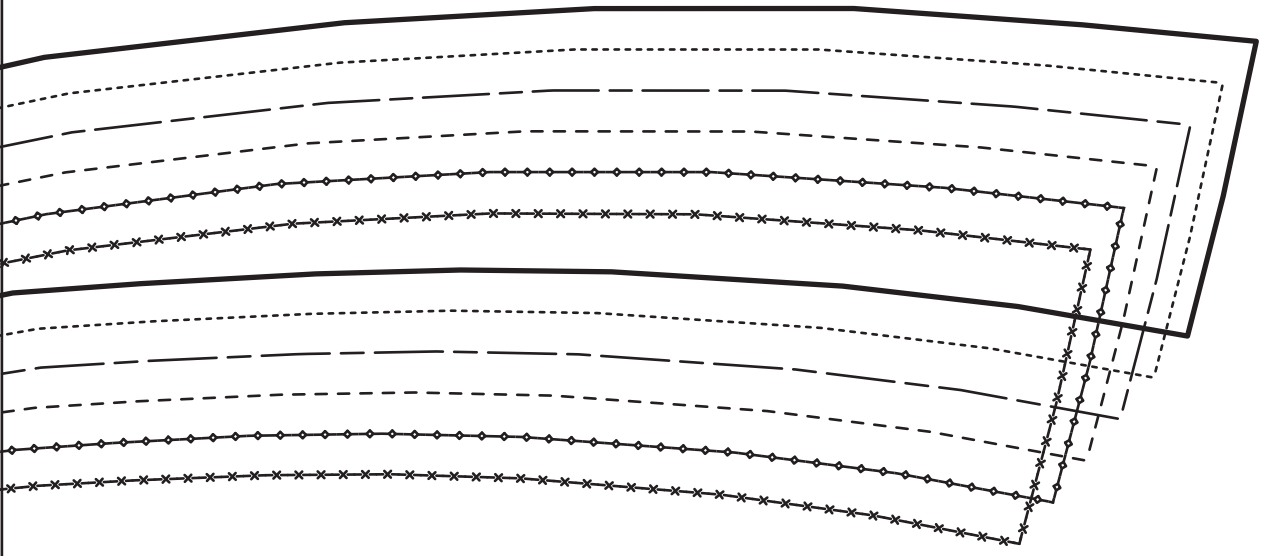




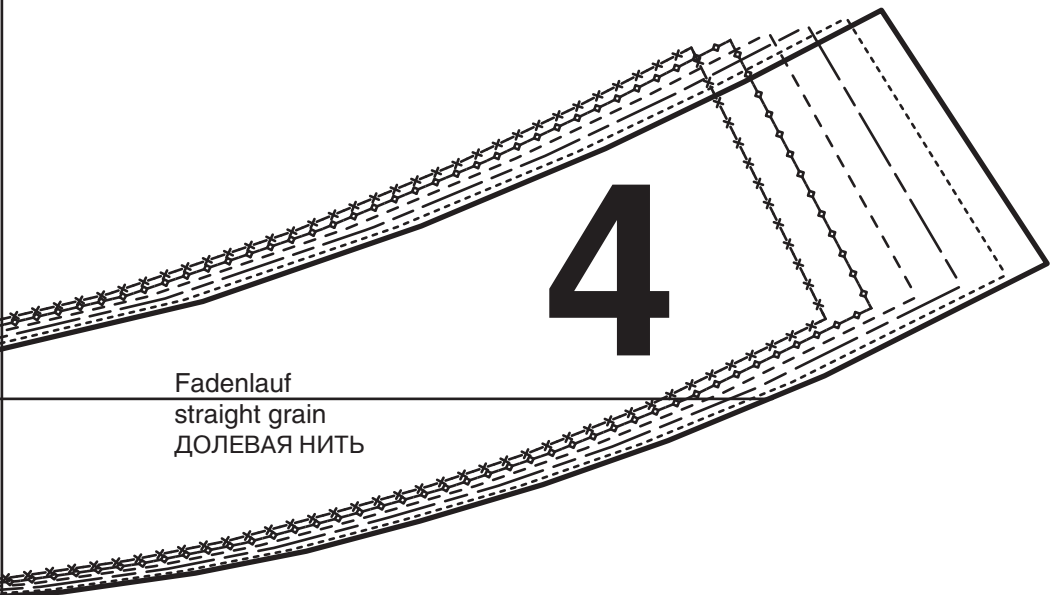




6h

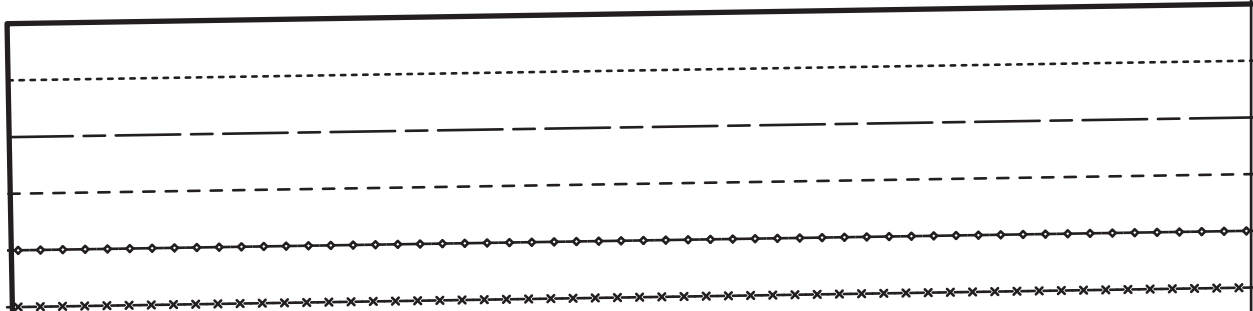


5g



4h

7a

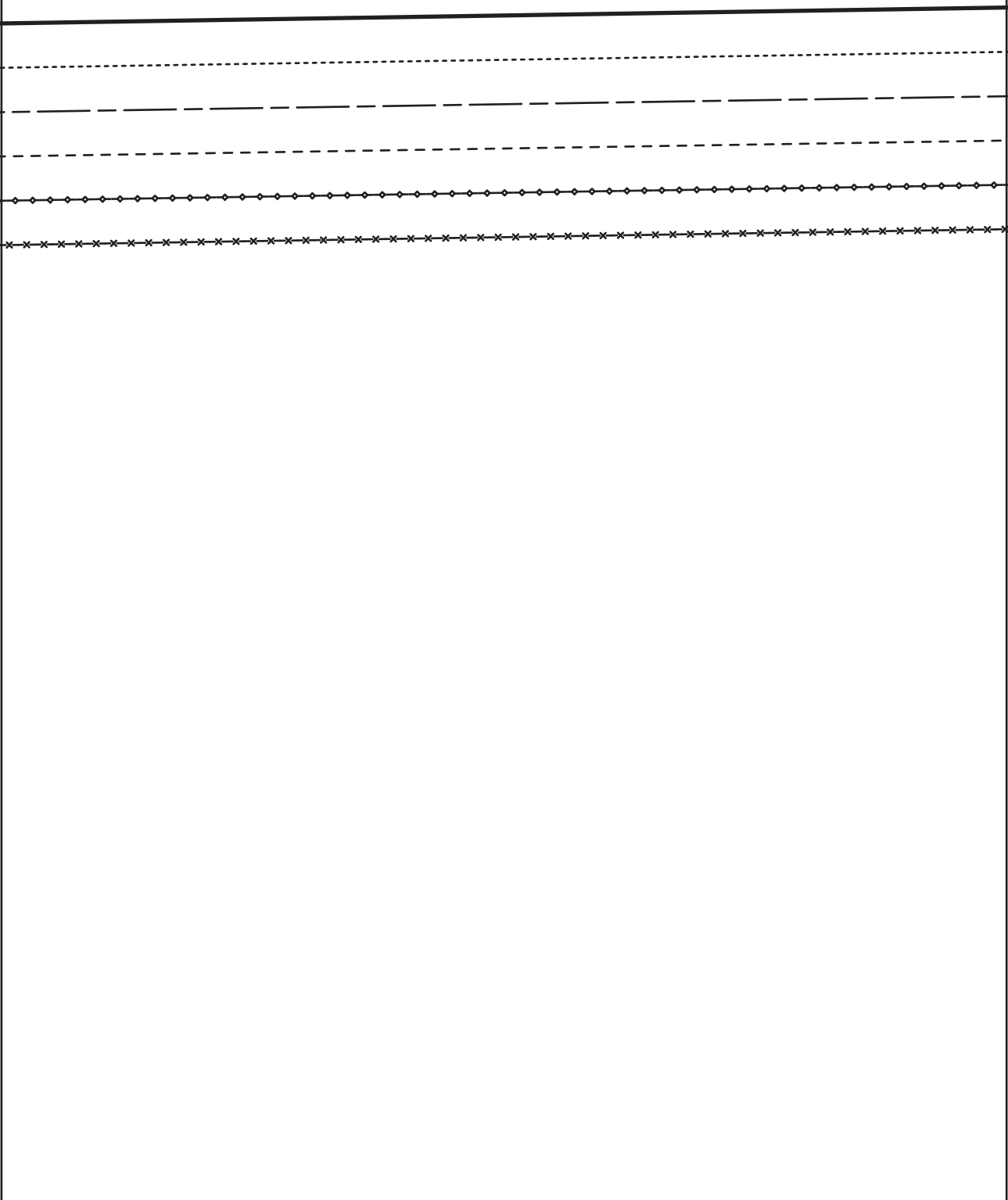


6a



7a

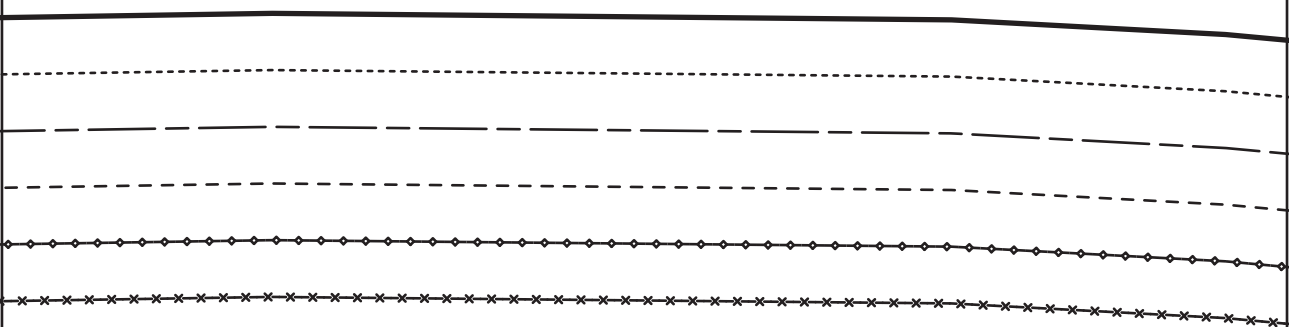
7b



6b

7b

7c



×

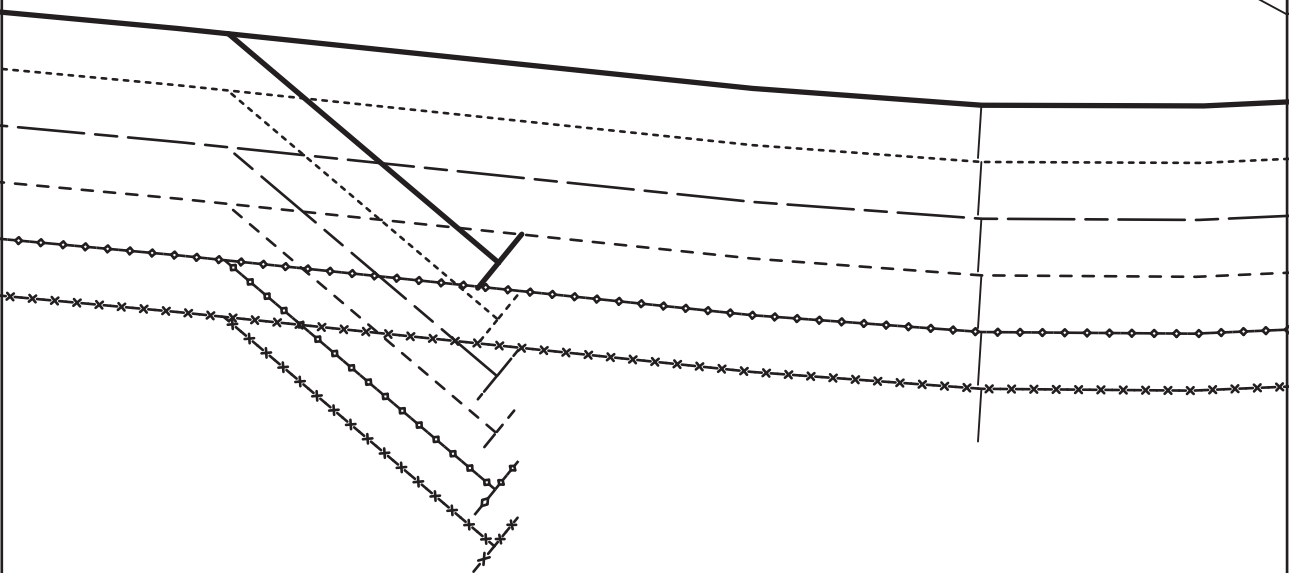
×

6c



7c

7d

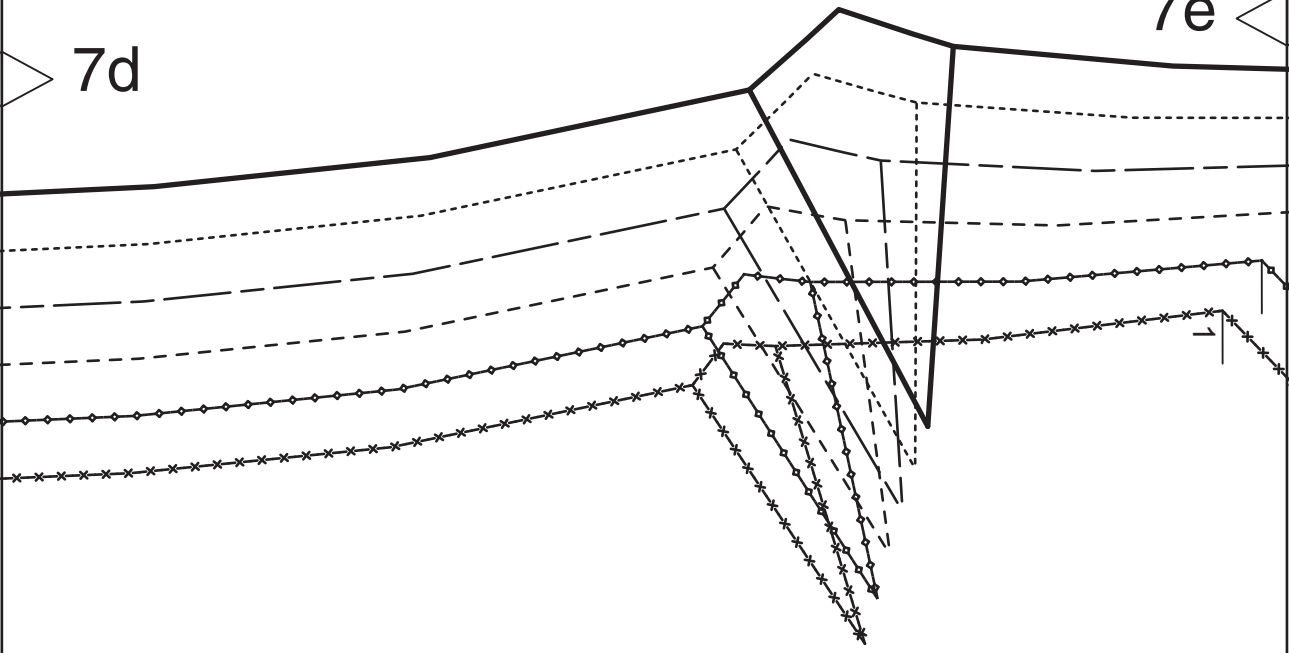


Taille  
waist  
ТАЛИЯ

6d

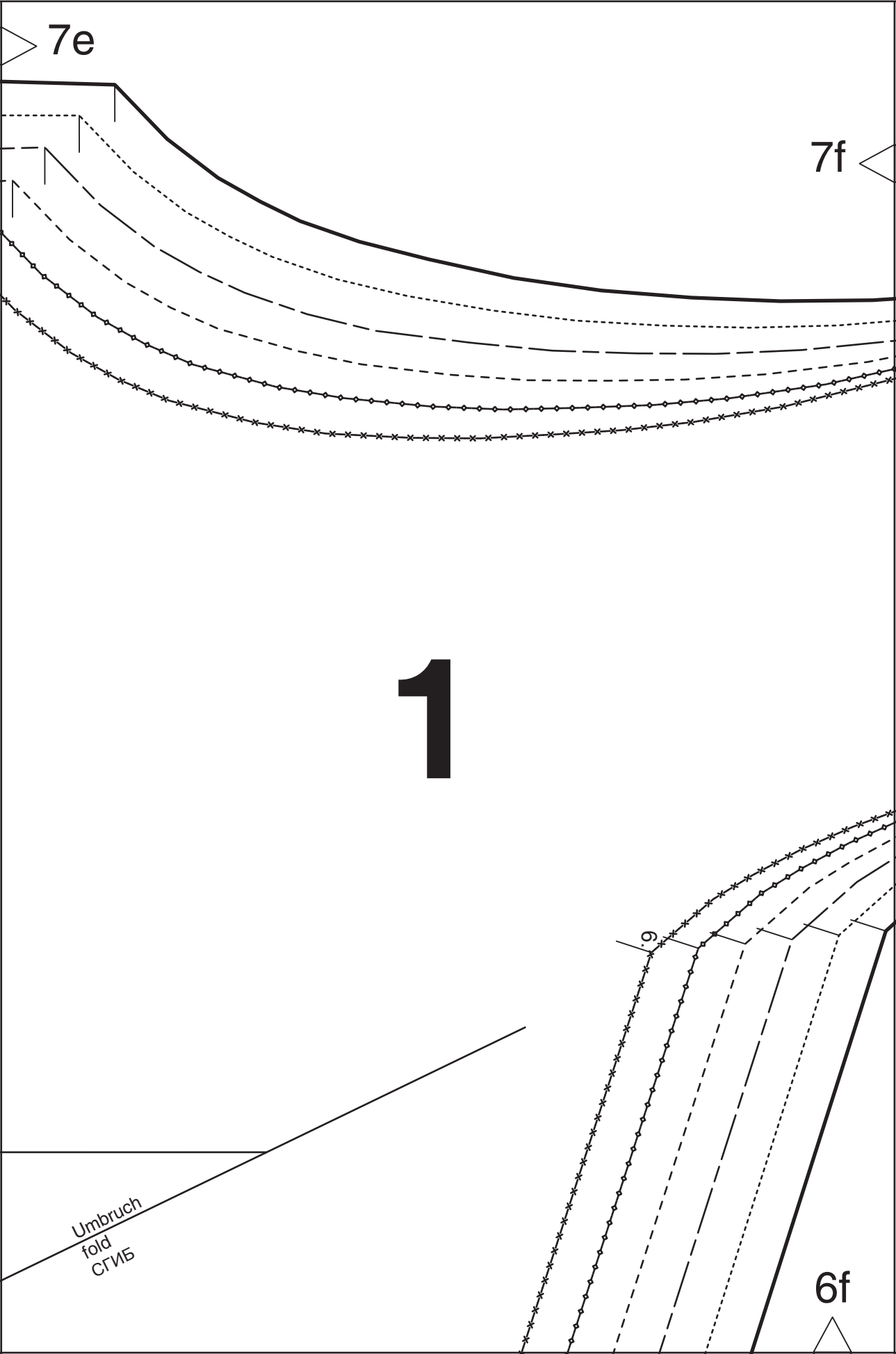
7d

7e

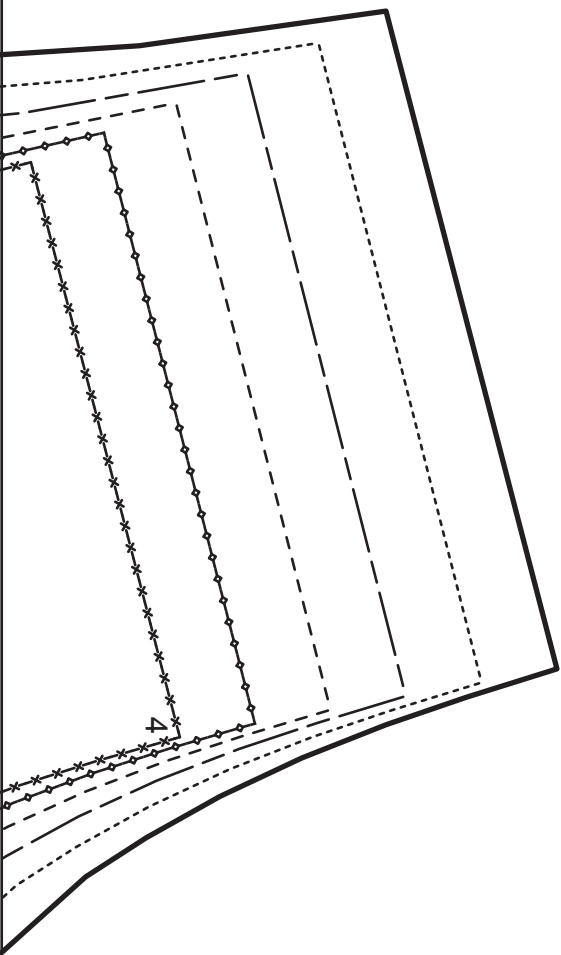


vordere Mitte Fadenlauf  
center front straight grain  
ЛИНИЯ СЕРЕДИНЫ ПЕРЕДА ДОЛЕВАЯ НИТЬ

6e



7f

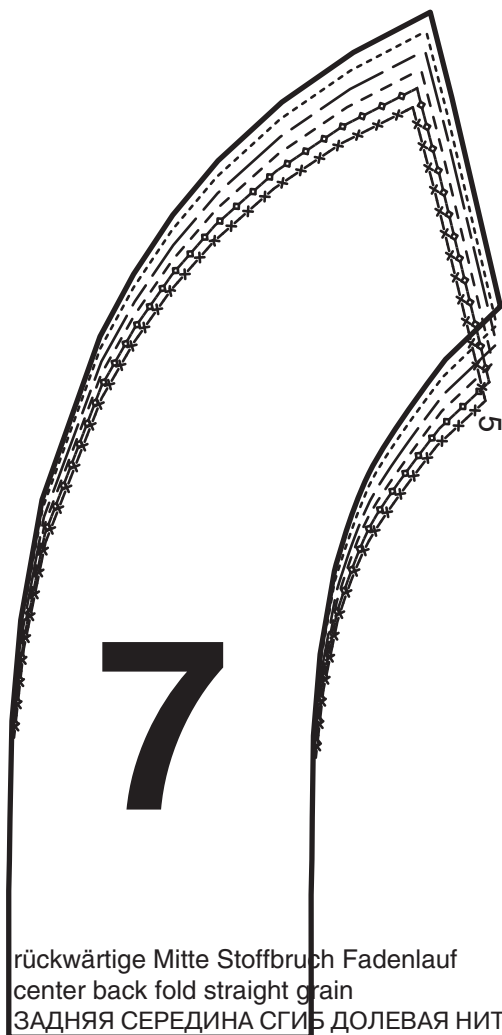


7g

6g



7g



rückwärtige Mitte Stoffbruch Fadenlauf  
center back fold straight grain  
ЗАДНЯЯ СЕРЕДИНА СГИБ ДОЛЕВАЯ НИТЬ

6h