

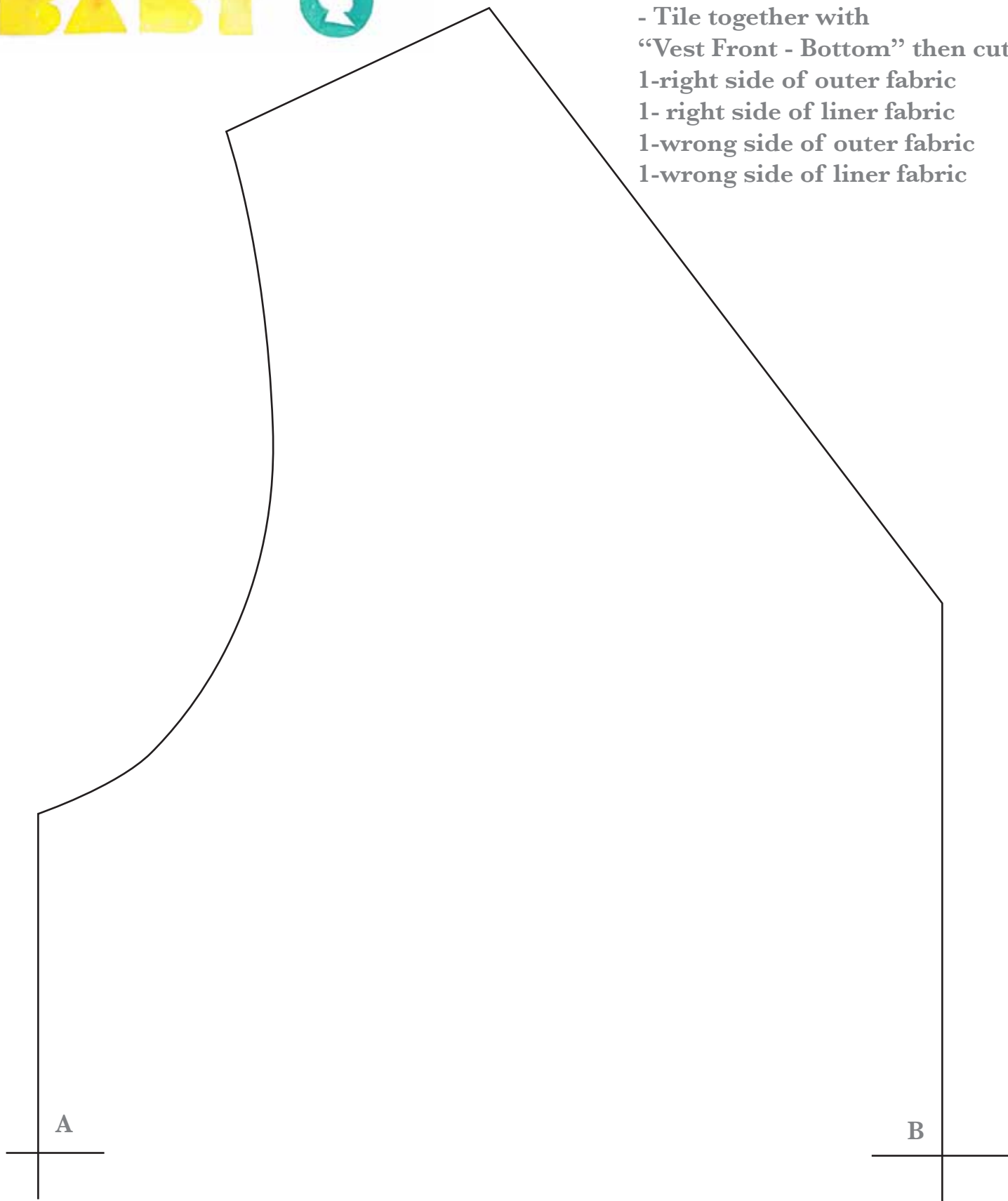


REVERSIBLE VEST

Size: 12 Months

VEST FRONT - TOP

- Tile together with “Vest Front - Bottom” then cut:
- 1-right side of outer fabric
- 1- right side of liner fabric
- 1-wrong side of outer fabric
- 1-wrong side of liner fabric



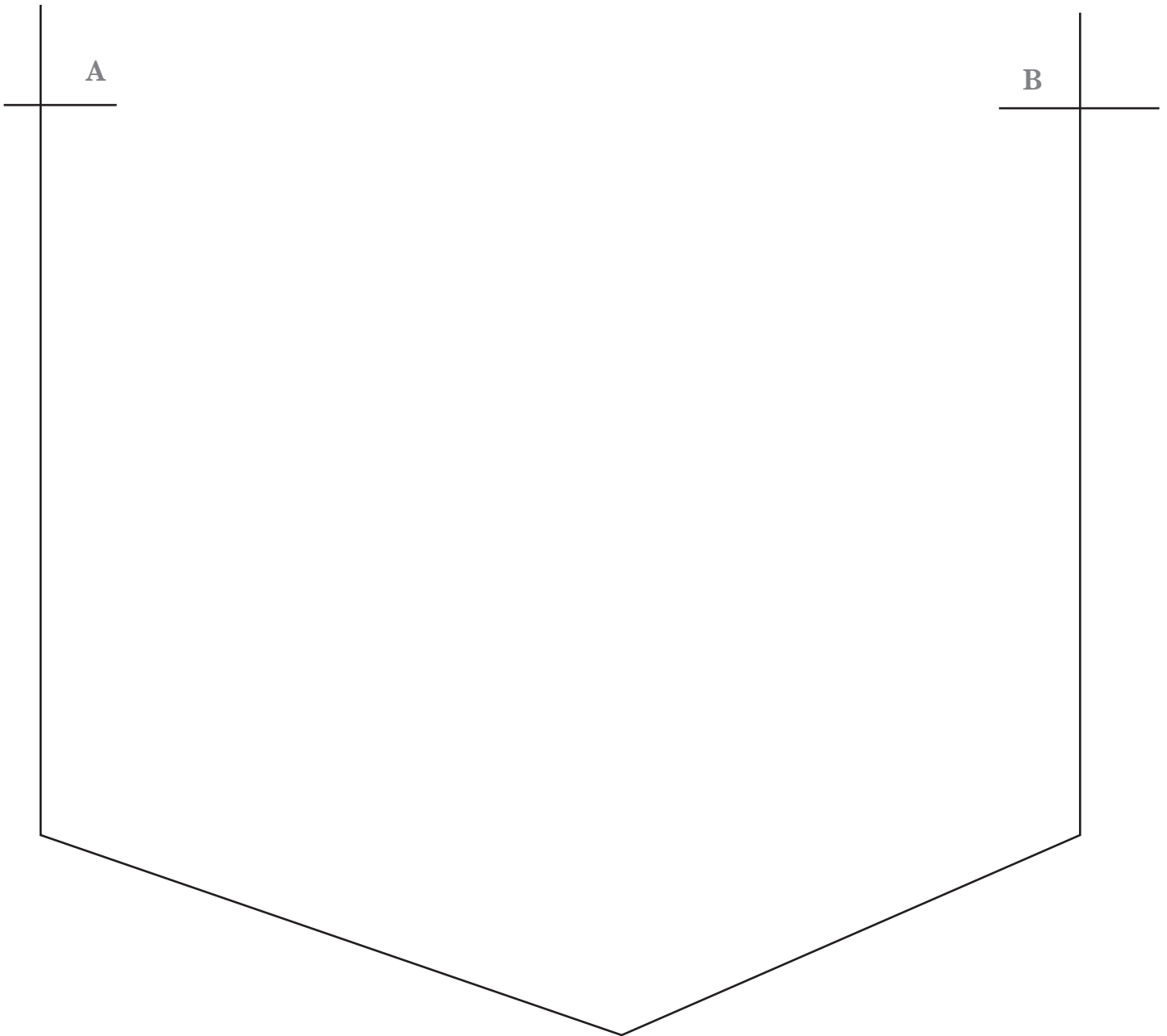


REVERSIBLE VEST

Size: 12 Months

VEST FRONT - BOTTOM

- Tile together with
“Vest Front - Top”





REVERSIBLE VEST

Size: 12 Months

VEST BACK - TOP

- Tile together with
"Vest Back - Bottom" then
with pattern on fold of fabric, cut:
1-right side of outer fabric
1- right side of liner fabric

FOLD



A

B



REVERSIBLE VEST

Size: 12 Months

VEST BACK - BOTTOM

- Tile together with
“Vest Back - Top”

