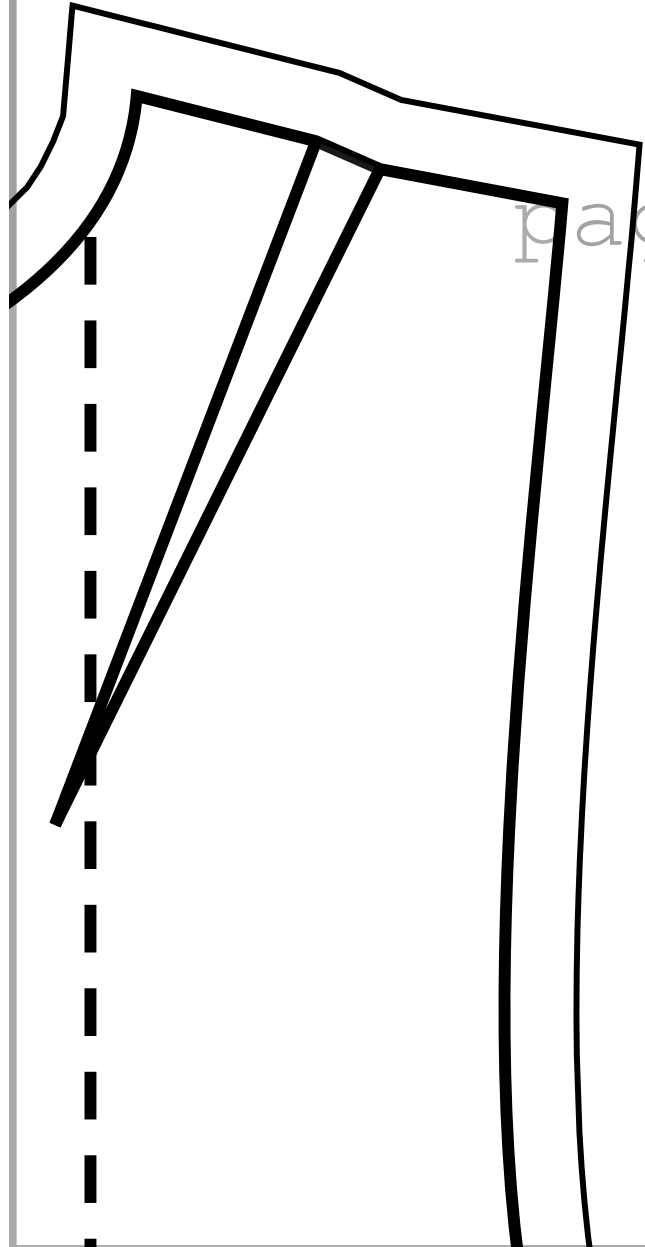


page 1/1

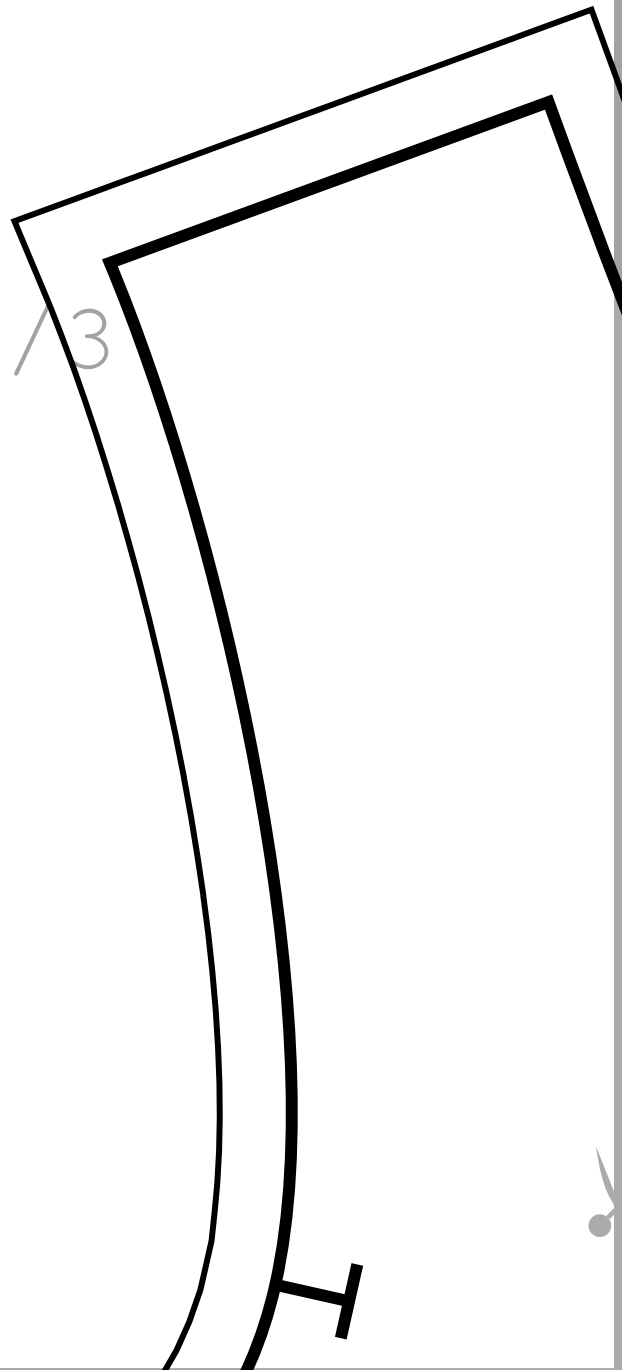




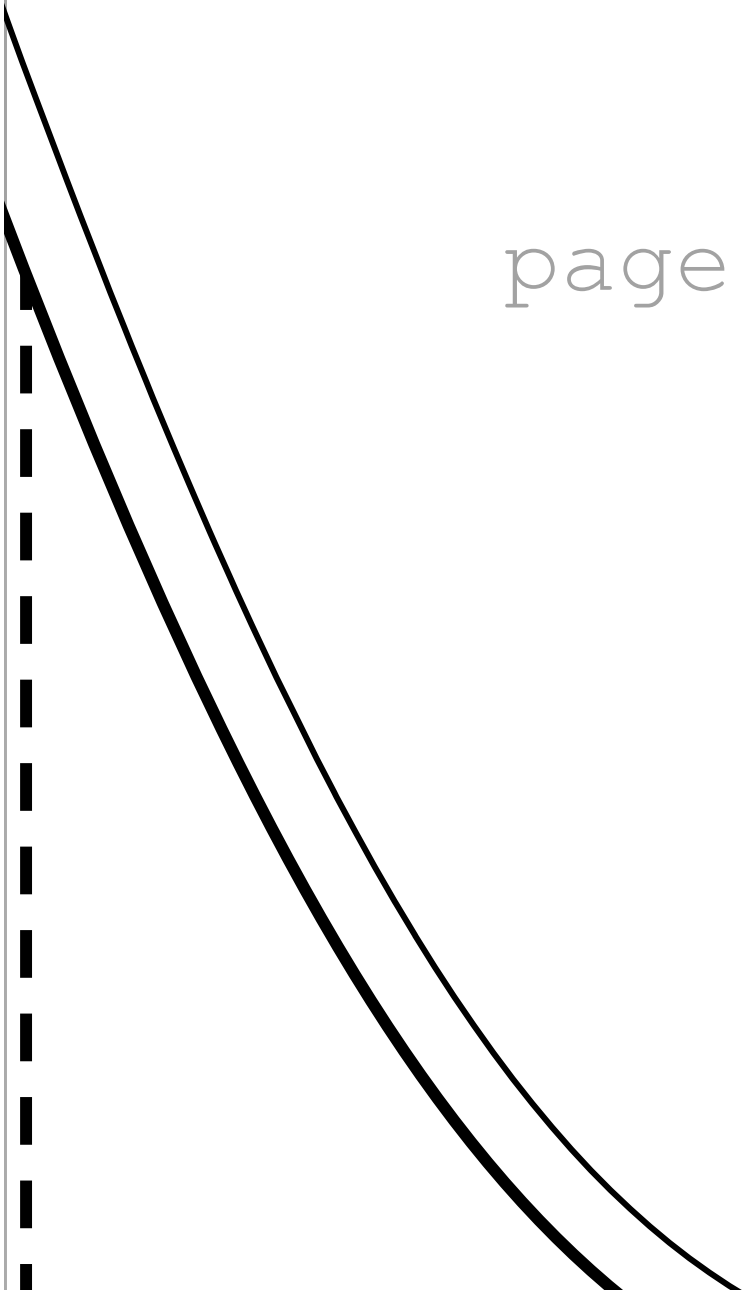
page 1 / 2



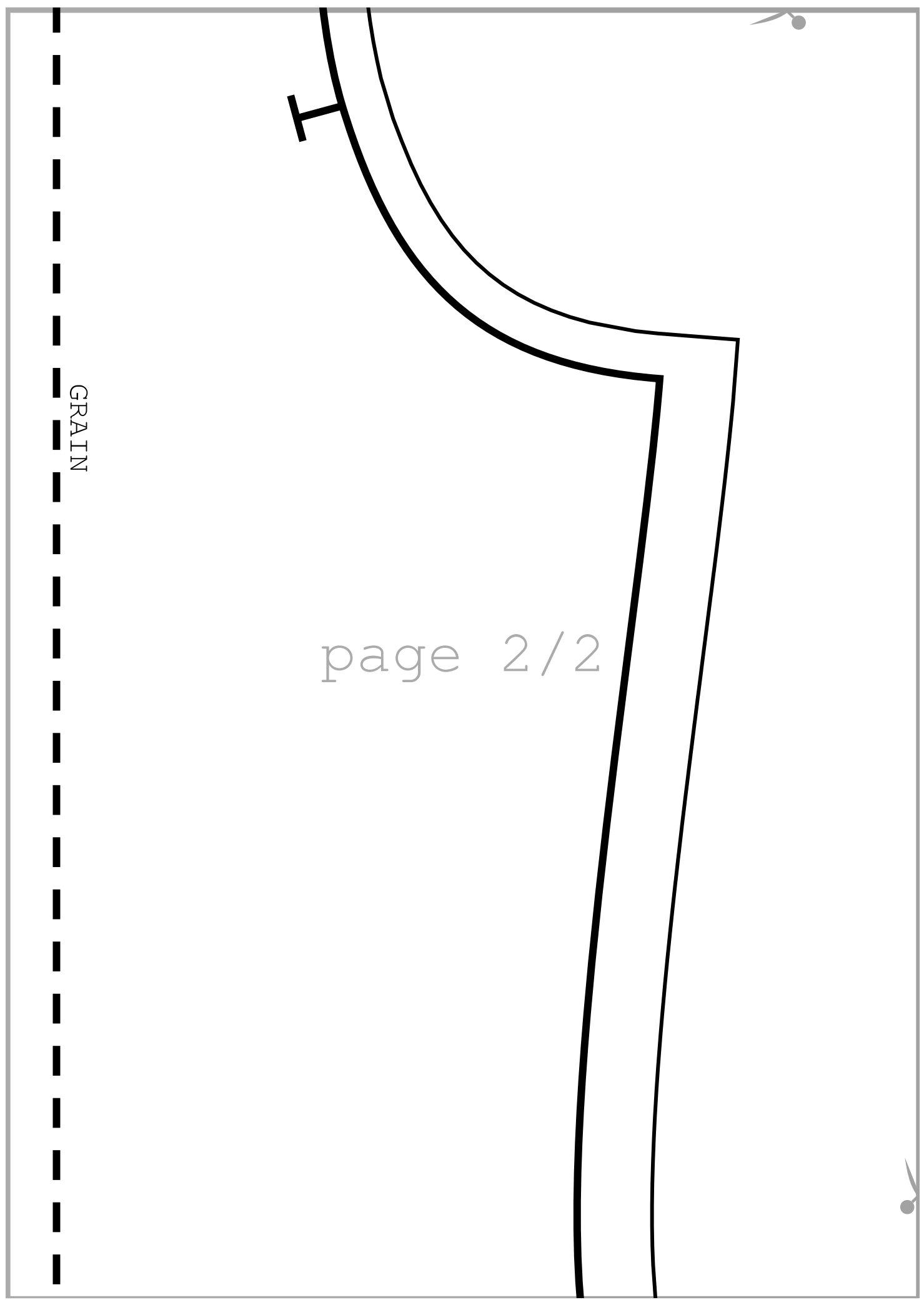
page 1 / 3



page 1 / 4



page 2 / 1



T

GRAIN

page 2 / 2



page 2/3

H

GRAIN

page 2 / 4

enter Front



Center back

page 3/1

page 3/2



Height / Bust / Waist / Hip:
170 / 100 / 79 / 105 cm

page 3 / 3





C



Center front

page 3 / 4

Mix and Match Pattern
Front



Height/Bust/Waist/Hip:

170/100/79/105 cm

page 4 / 1

page 4 / 2

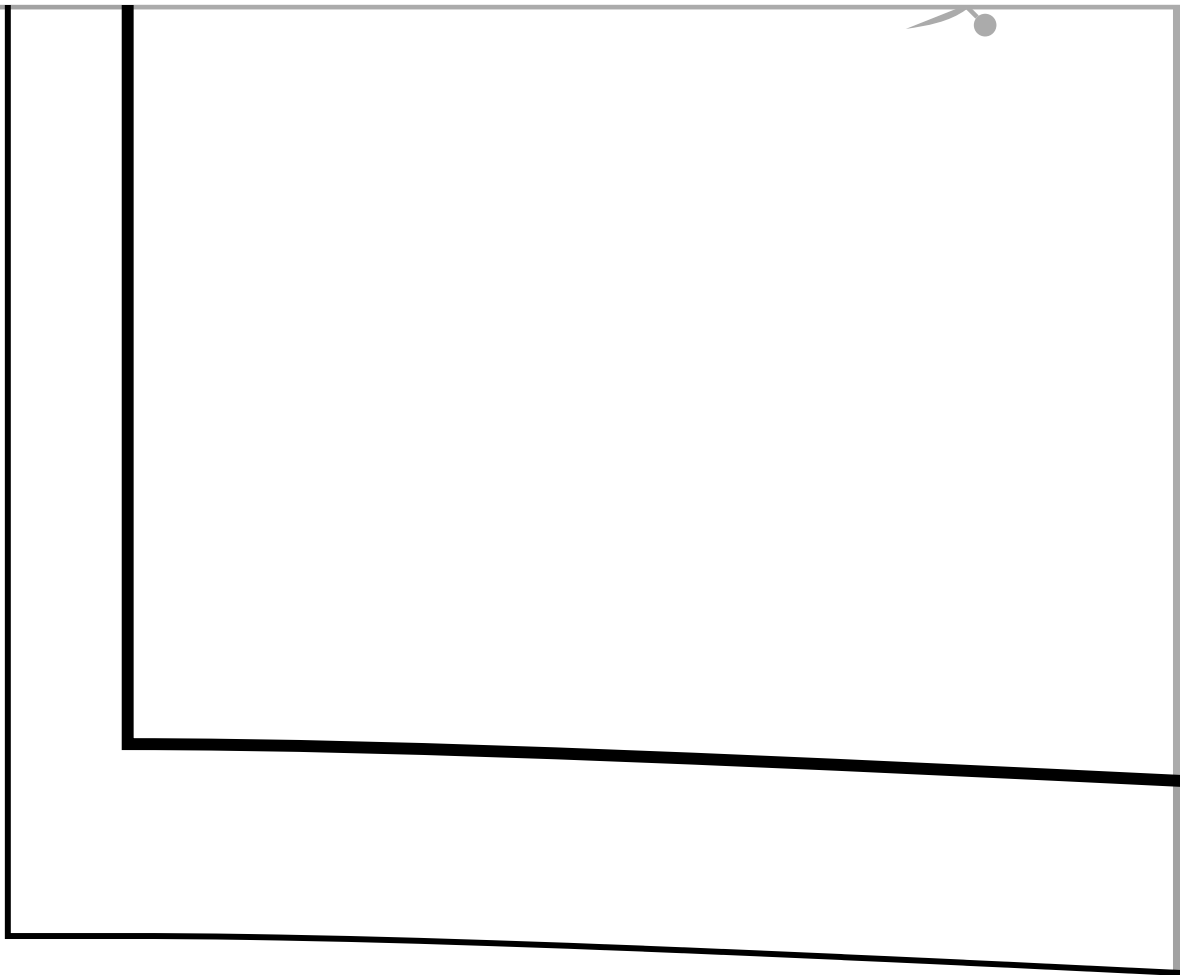
Mix and Match Pattern
Back

Self-cut It!

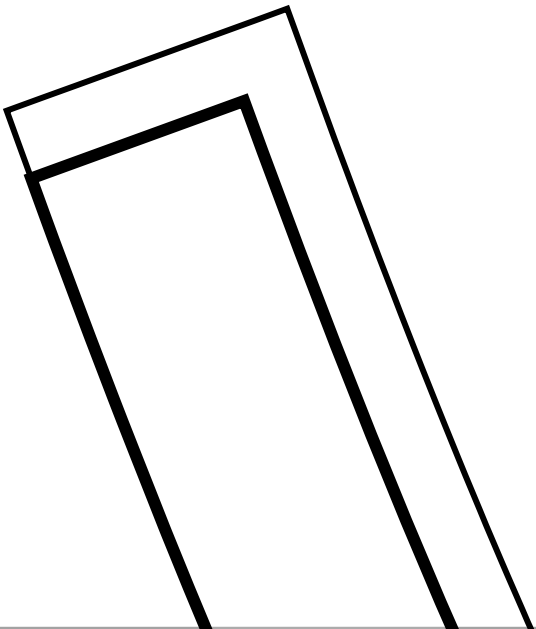
page 4 / 3

page 5/1

page 5/2

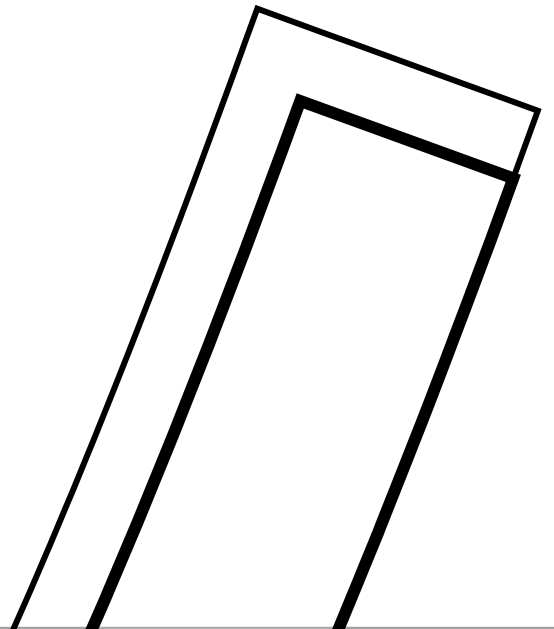


page 5/3





page 5/4



page 6 / 1

To back

ch Pattern

ve

171

Waist/Hip:

/105 cm

GRAIN

page 6/2

To Front



GRAIN
Match Pattern
Front Facing cut 1
Self, InterFacing
Height/Bust/Waist/Hip:
170/100/79/105 cm

Three curved lines, possibly representing a page margin or a decorative element, curve from the top edge towards the bottom left. The lines are black and vary in thickness. The topmost line is the thinnest, the middle line is medium thickness, and the bottom line is the thickest. They all start near the top right and curve towards the bottom left. A small grey dot is located at the top right end of the thickest line.

page 6 / 4

page 7 / 1

Mix and Match

Sleeve

← --- Self --- Cut

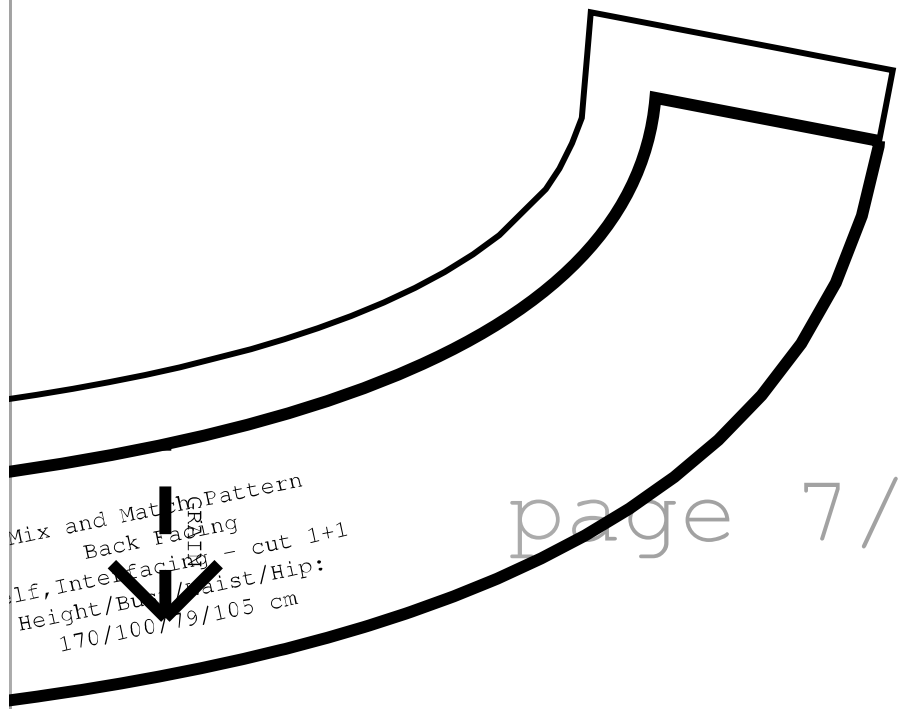
Height / Bust / W

170 / 100 / 79

page 7 / 2

page 7 / 3

se



Mix and Match Pattern
Back Facing
Self, Interfacing - cut 1+1
Height/Bust/Waist/Hip:
170/100/79/105 cm