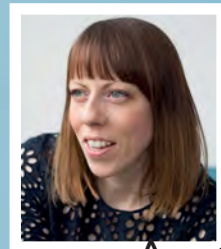


DOWNLOAD
YOUR
FREE
TEMPLATE

Twirly girls' **SKATER DRESS**

*Shouting spring loud and clear,
this girl's skater dress is the
perfect popover dress for
everyday or party time!*



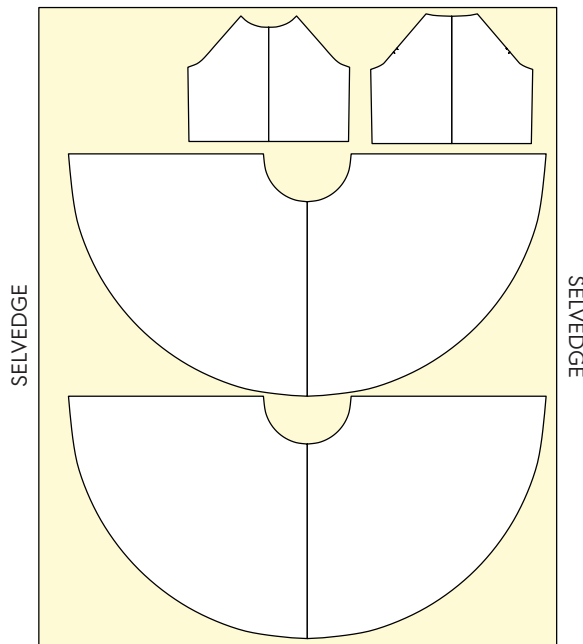
Anna

Project **ANNA BRUCE**
Photographer **RENATA STONYTE**
Model **ILSE STERKEN**

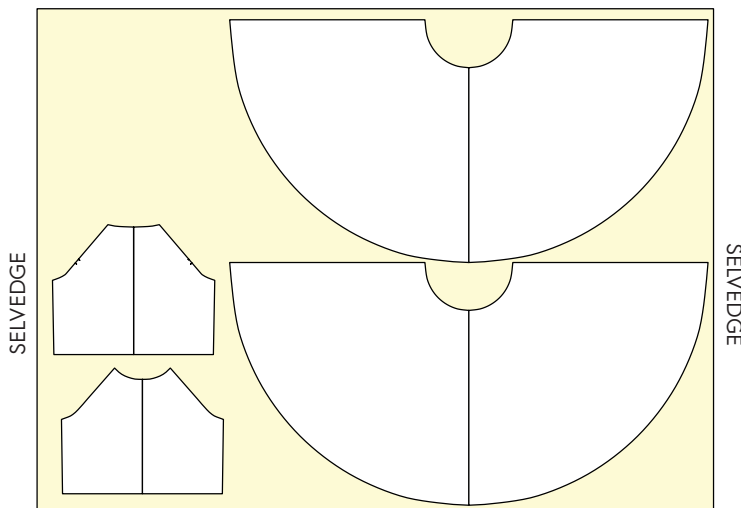


LAYPLANS

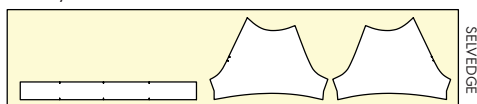
115cm Wide Fabric - UNFOLDED - Main Fabric



150cm Wide Fabric - UNFOLDED- Main Fabric



115cm/150cm Wide Fabric - UNFOLDED- Contrast



SIZING

Body measures (cm)	3Y	4Y	5Y	6Y	7Y	8Y
To fit height	98cm	104cm	110cm	116cm	122cm	128cm
To fit chest	54cm	56cm	58cm	61cm	63cm	66cm

Finished garment (cm)	3Y	4Y	5Y	6Y	7Y	8Y
To fit height	58cm	60cm	62cm	64cm	66cm	68cm
To fit chest	49.5cm	53cm	56cm	59cm	62.5cm	66cm

SKILL LEVEL: 🟡 🟡 🟡 🟡

MATERIALS:

- cotton/elastane single jersey in 2 colours
- free template from www.sewnowmag.co.uk

MAIN FABRIC:

- Sizes 3-6 = 1.15m (115cm-wide fabric)
- 1.5m (150cm-wide fabric)
- Sizes 7-8 = 1.3m (115cm-wide fabric)
- 1.5m (150cm-wide fabric)

CONTRAST FABRIC:

- All sizes = 0.25m (115cm/150cm-wide fabric)

NOTES:

Cut sleeves and neck binding from contrast fabric, or if you prefer the dress all in one fabric cut all pieces from one colour

Always pre-wash and iron your fabric before starting - you don't want to risk it shrinking on its first wash!

HOW TO MAKE:

1 Thread your machine with thread matching the contrast sleeve and neck binding. Attach the sleeves to the front bodice by placing right sides together and sew with a 1cm seam. (See Pic A)

2 Repeat Step 1 then press seams towards the sleeve. (See Pic B)



"THE GREAT THING ABOUT WORKING WITH JERSEY IS IT DOESN'T NEED TO BE OVERLOCKED IF YOU DON'T WANT TO, AS JERSEY WON'T FRAY!"



Sam



3 Attach the back sleeves to back bodice with a 1cm seam. (See Pic C.)

4 Take the neck binding and join the short ends by placing the right sides together and stitching with a 1cm seam, press the seam open. (See Pic D.)

5 Pin the neck binding to the neck edge with the right side of the binding to the wrong side of the neck, matching up the seam in the binding to the back armhole seam on the body, and line up the notches to the remaining seams. Refer to the pattern piece to identify and place the piece correctly. Attach with a 1cm-wide seam, extend the binding slightly as you go to match the size of the neck edge. (See Pic E.)



6 Turn the garment to the right side and arrange so the binding piece lies outside of the neck. Press the seam flat. (See Pic F.)

7 Turn the loose edge of the binding over to meet up with the raw edge of the neck seam. (See Pic G.) Turn again to the right side of the garment so the folded edge lines up with the stitch line around the neck. Pin to hold in position. (See Pic H.)

8 Stitch the binding closed about 2mm inside the folded edge on the right side of the garment. (See Pic I.)

9 Turn the cuff edge in by 1cm and press then turn again by a further 1cm and press flat. Stitch through with a stretch stitch to finish the sleeve hem. (See Pic J.)

10 You might want to change your thread colour now to match the remaining part of the garment. Attach the skirt pieces to the front and back bodice, placing the seams right sides together and joining with a 1cm seam. (See Pic K.)

11 With right sides together lay the front of the garment onto of the back, lining up the side seams, match the waist seams and underarm seams by pinning if place if necessary. Join with a

1cm seam from underarm to hem or visa versa, making sure your pressed seams are running in the correct directions as you go. (See Pic L.)

12 If you are overlocking your seams, leave a 2cm thread tail at the underarm. Turn and secure this with a few back stitches under the seam to neaten and stop any unravelling stitches.

13 Double turn the garment hem by turning over to the wrong side by 1.2cm and pressing then turn by a further 1.2cm and press. After sewing press the hem nice and flat with steam that will shrink back any stretching caused when sewing.

14 A nice finishing touch is to add a label onto the back neck, you can download 'I MADE IT' labels for free from www.madeit-patterns.com, just print them onto transfer printer paper and iron onto cotton tape. (See Pic M.)

“Every little girl will love to twirl in this super simple-to-make skater dress. If you are using a sewing machine to sew the seams make sure you select a stretch stitch, you can overlock or zigzag stitch these seams after sewing if you prefer. Always use a ballpoint needle on jersey fabric to prevent any needle damage to the fabric”



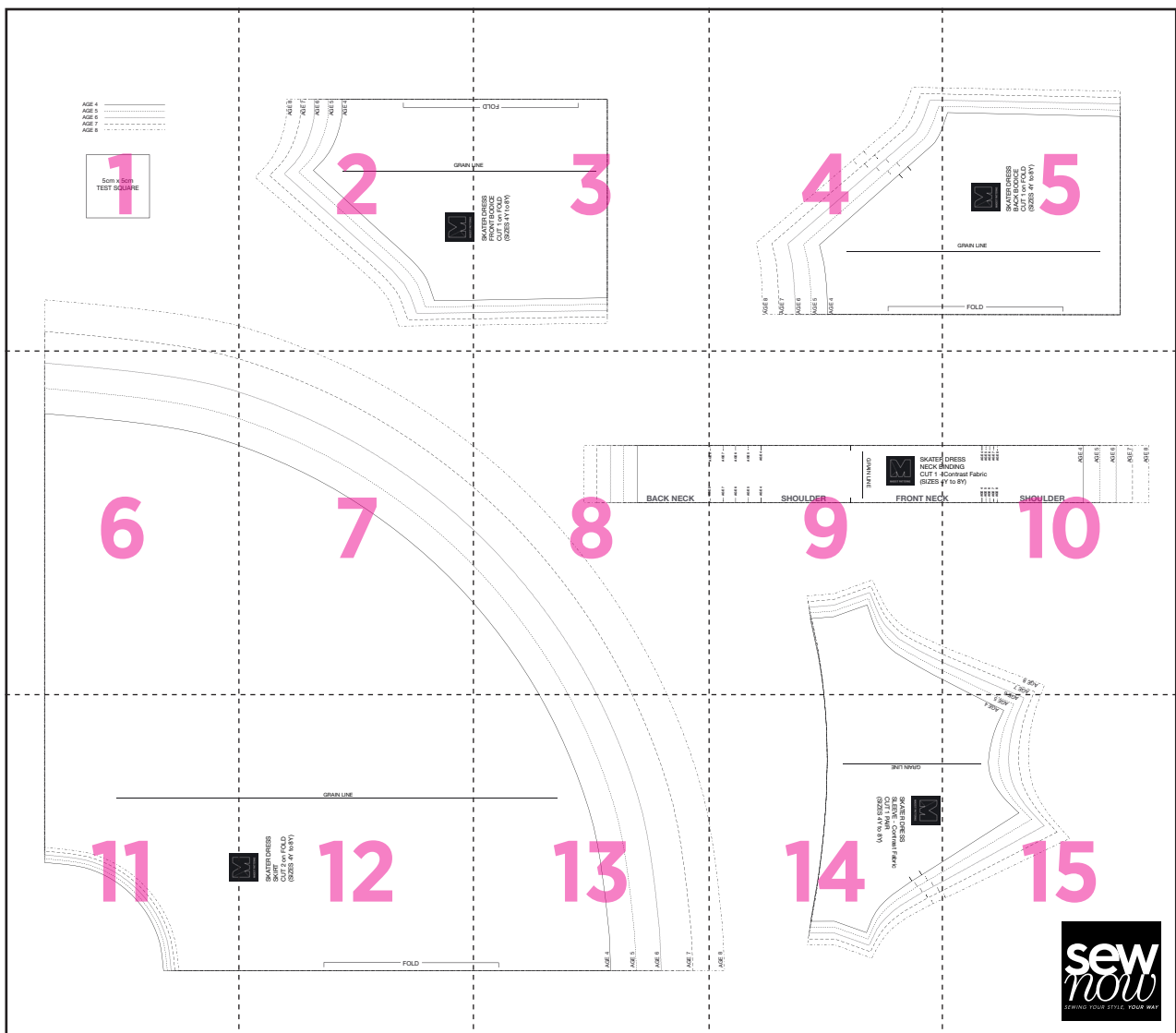
Anna



Madeit Patterns offers fresh and modern clothing patterns for cool kids and stylish adults. Its mission is to take home sewing to the next level and show people how to create slick, professionally finished garments at home www.madeit-patterns.com



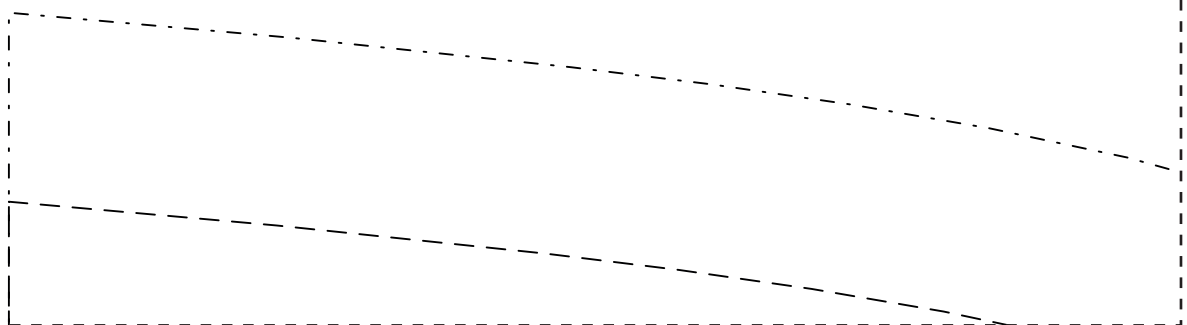
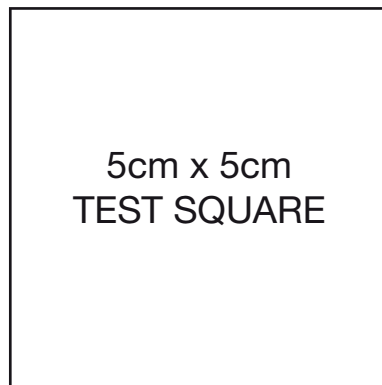
TWIRLY GIRLS SKATER DRESS



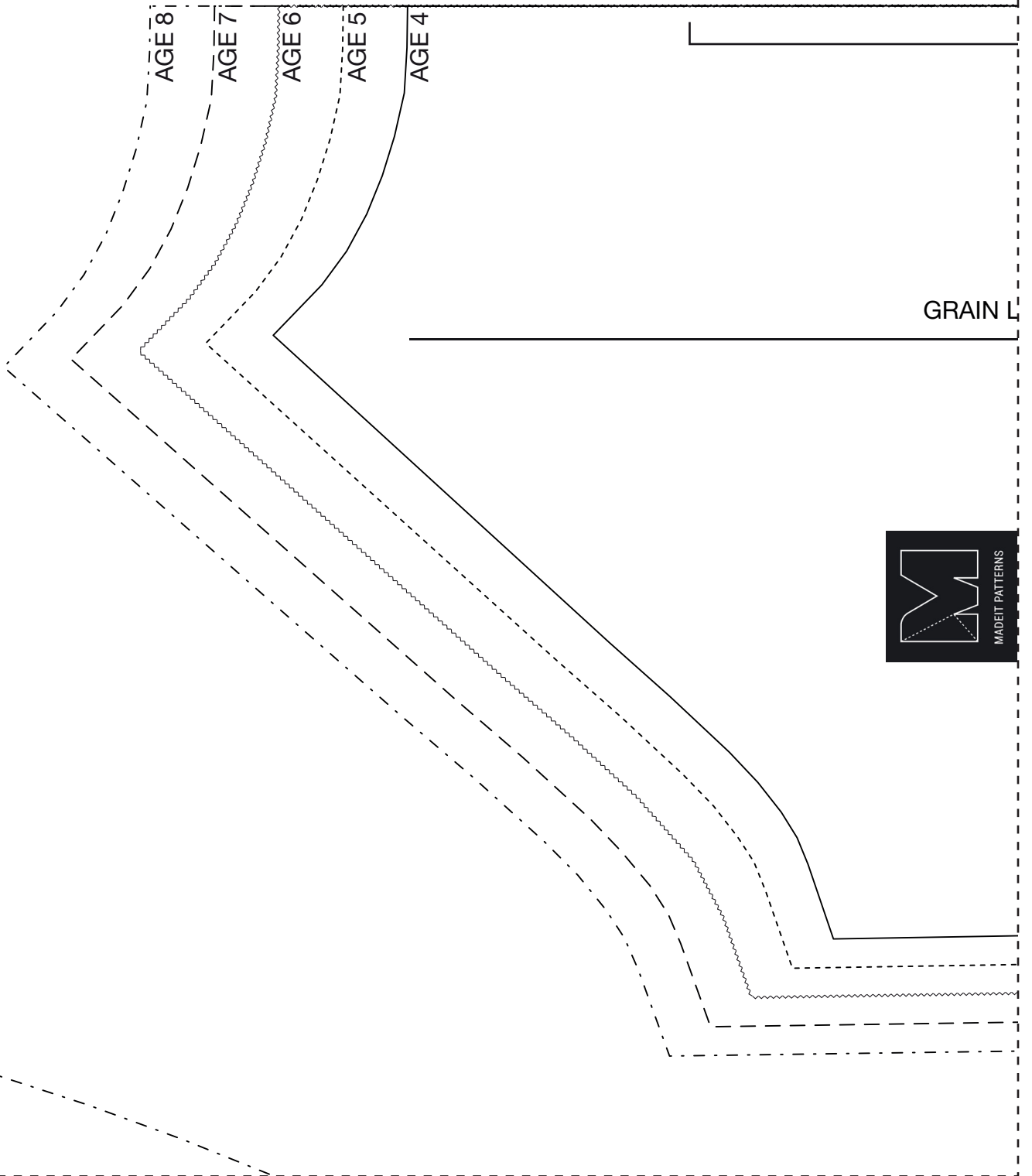
1



- AGE 4 _____
- AGE 5 - - - - -
- AGE 6 ~~~~~
- AGE 7 - - - - -
- AGE 8 - - - - -



2



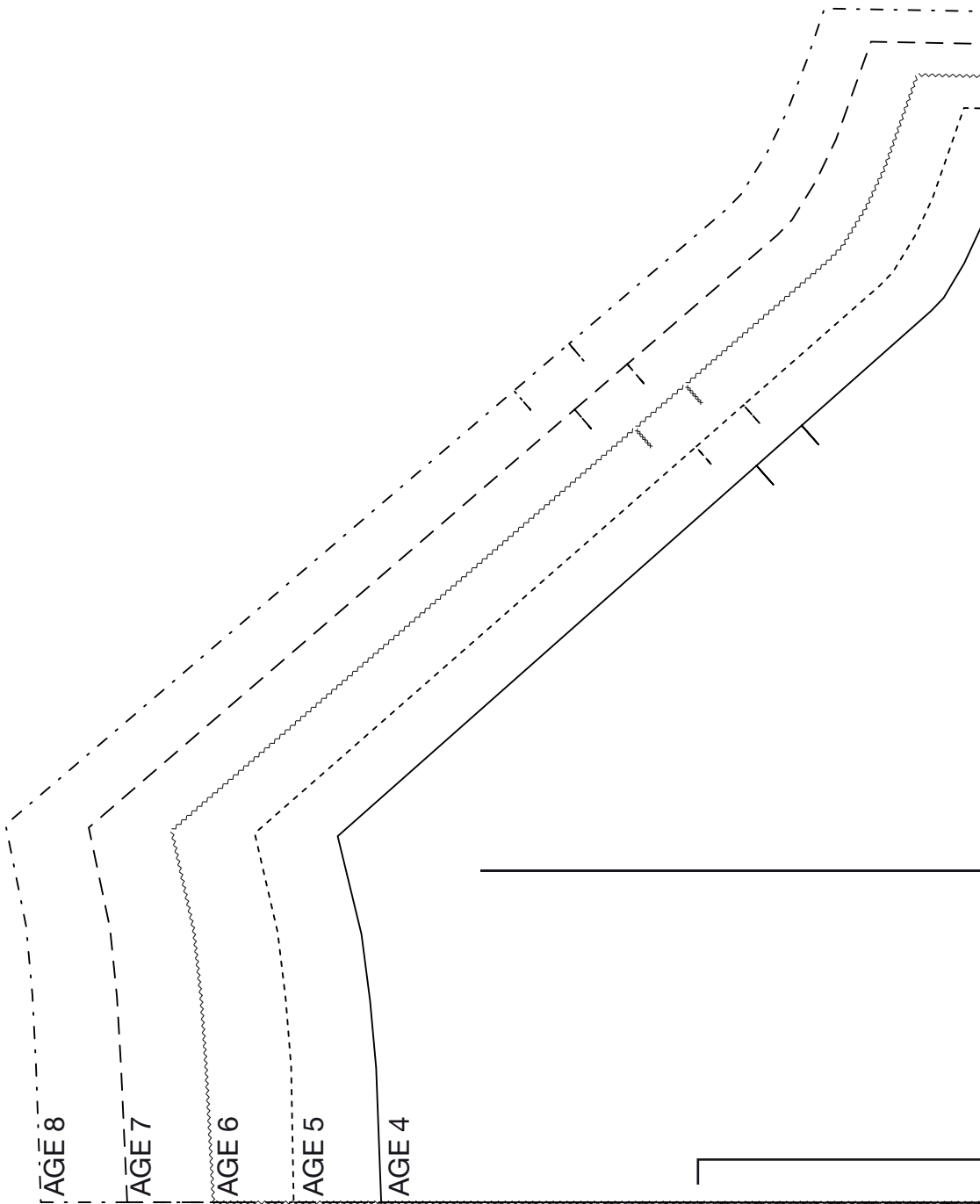
3

FOLD

LINE

SKATER DRESS
FRONT BODICE
CUT 1 on FOLD
(SIZES 4Y to 8Y)





5

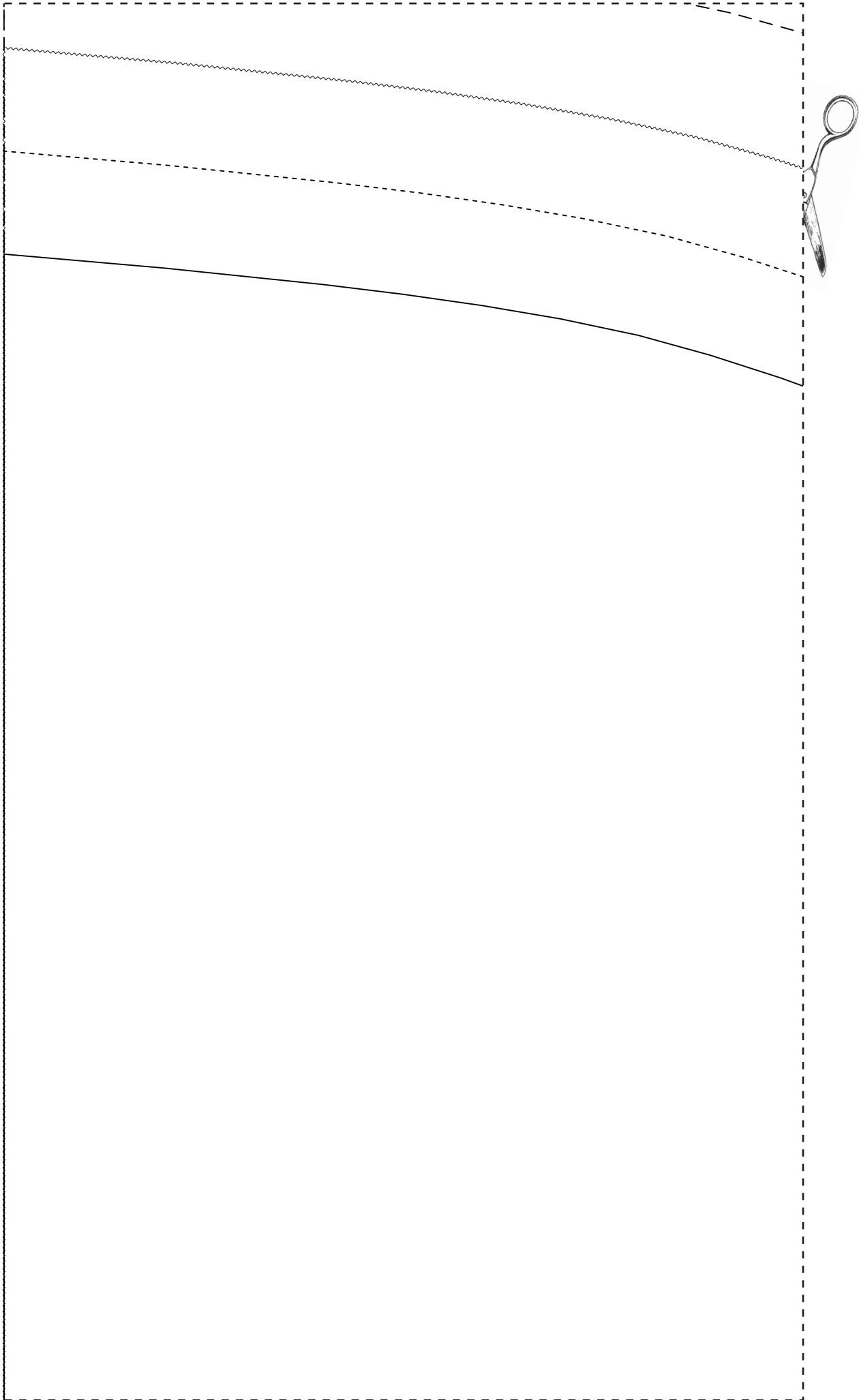


SKATER DRESS
BACK BODICE
CUT 1 on FOLD
(SIZES 4Y to 8Y)

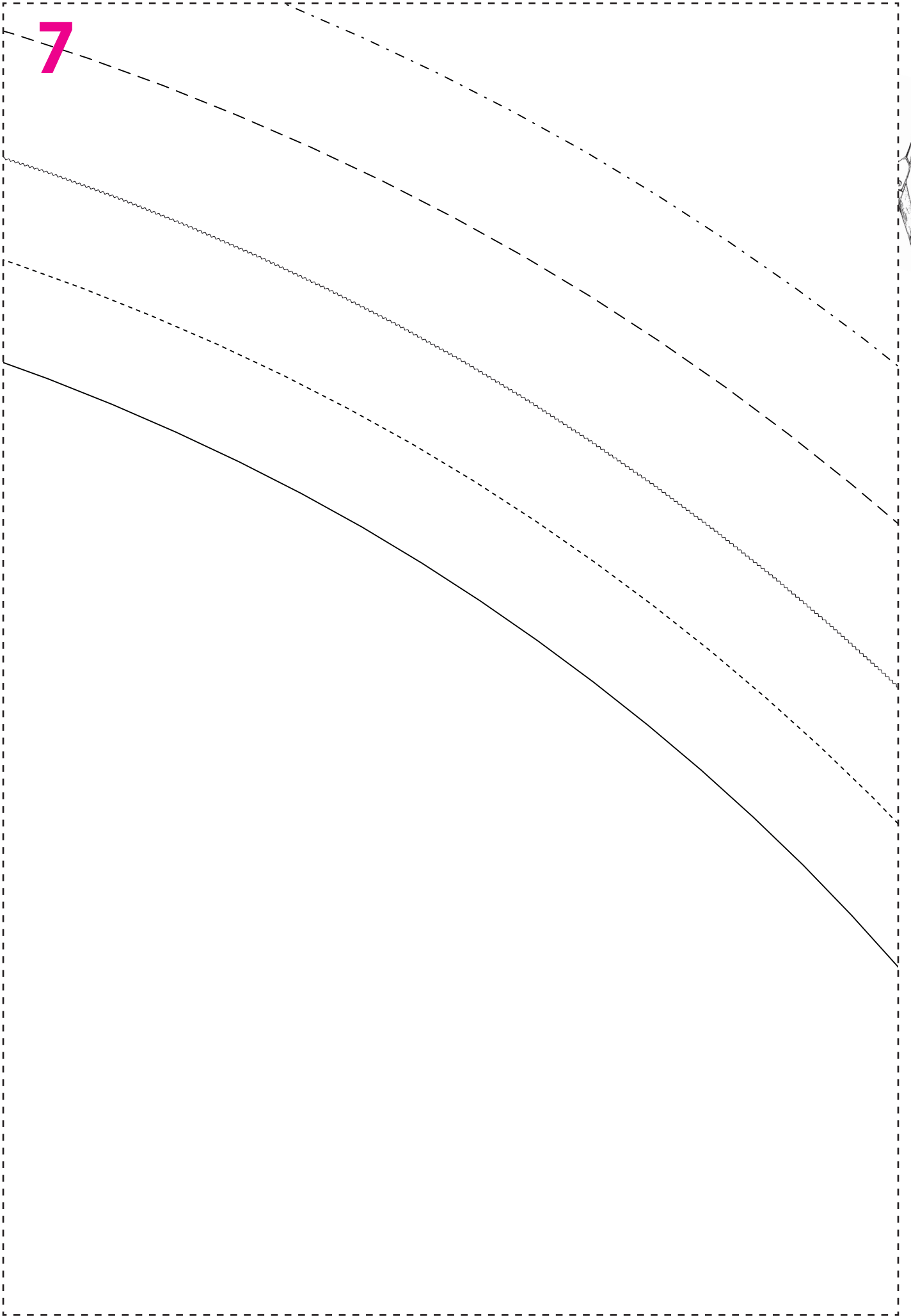
GRAIN LINE

FOLD

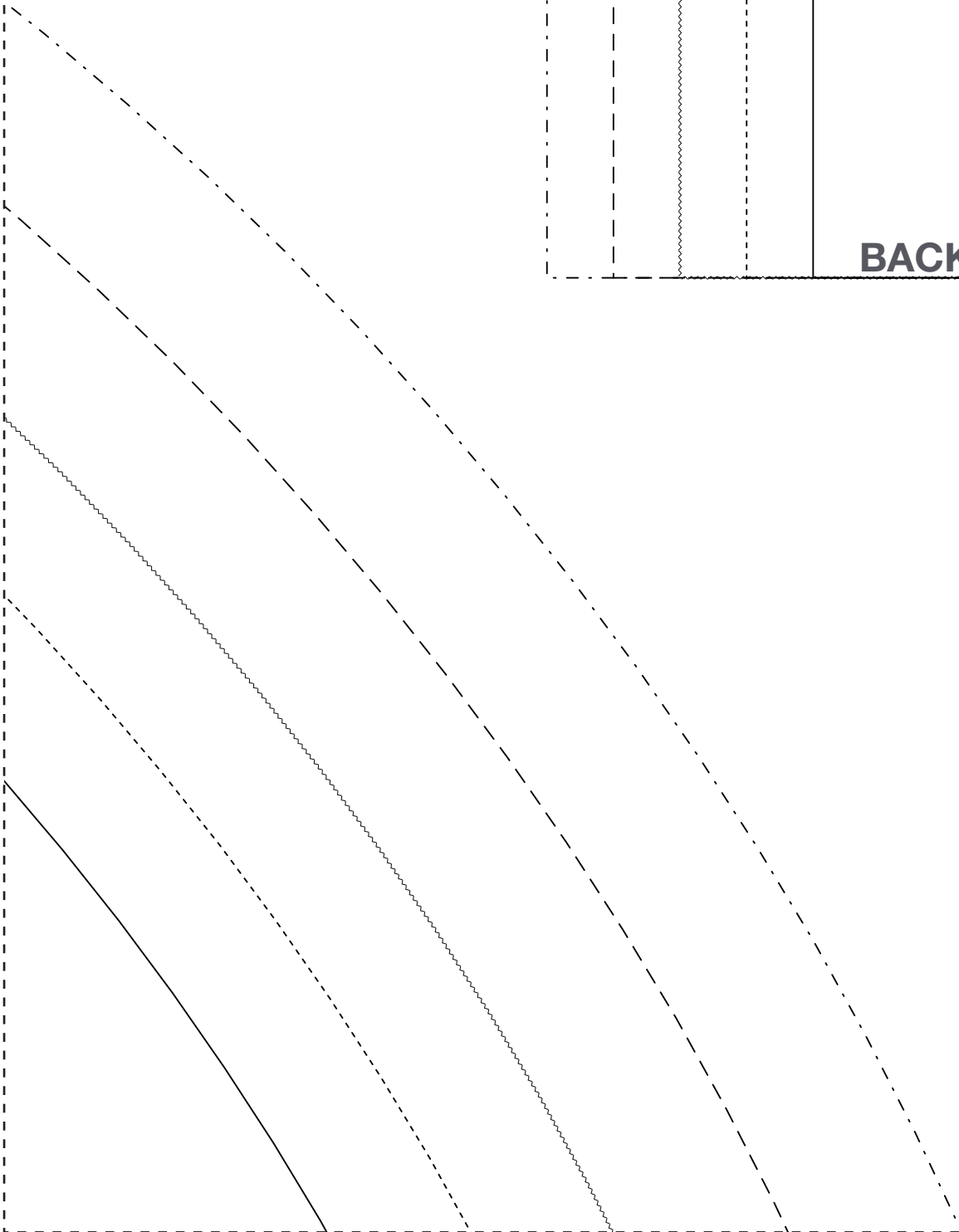
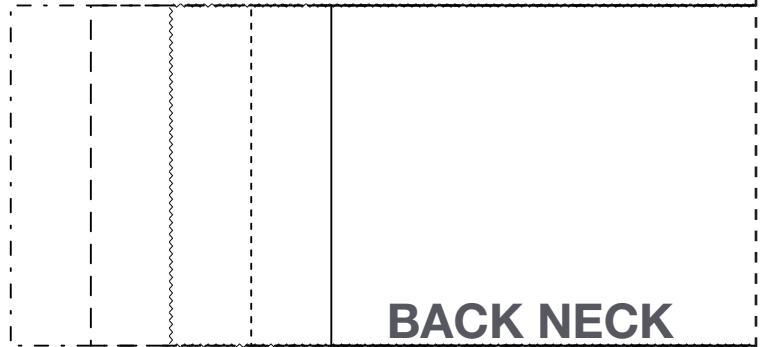
6



7



8

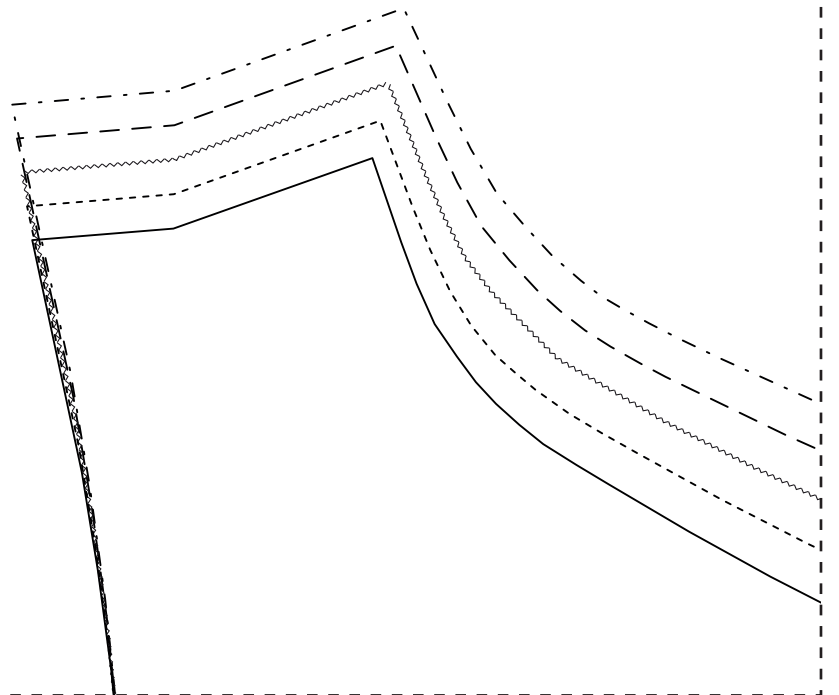


9

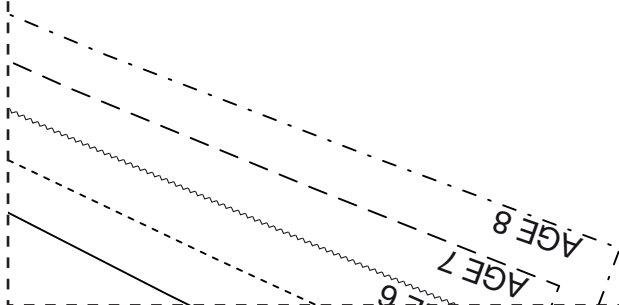


AGE 8	AGE 7	AGE 6	AGE 5	AGE 4	GRAIN LINE	 SKATER NECK B CUT 1 - (SIZES 4
AGE 8	AGE 7	AGE 6	AGE 5	AGE 4		

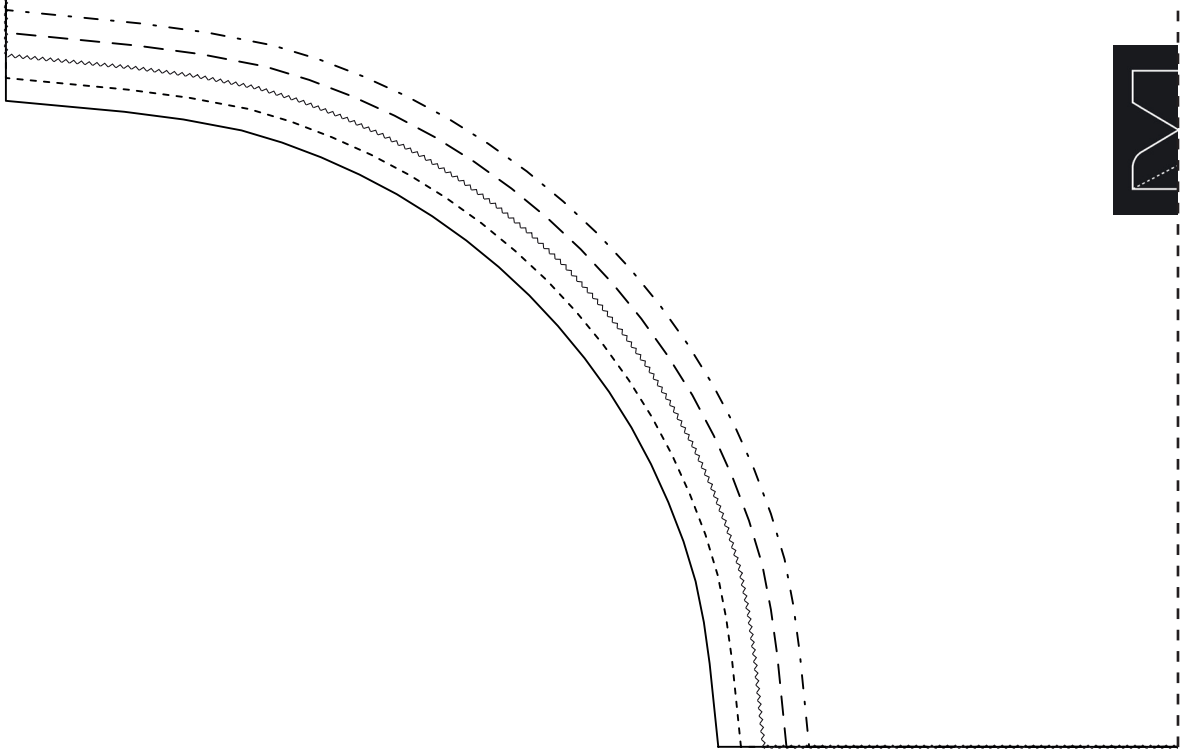
SHOULDER **FRONT NECK**



10



11



12



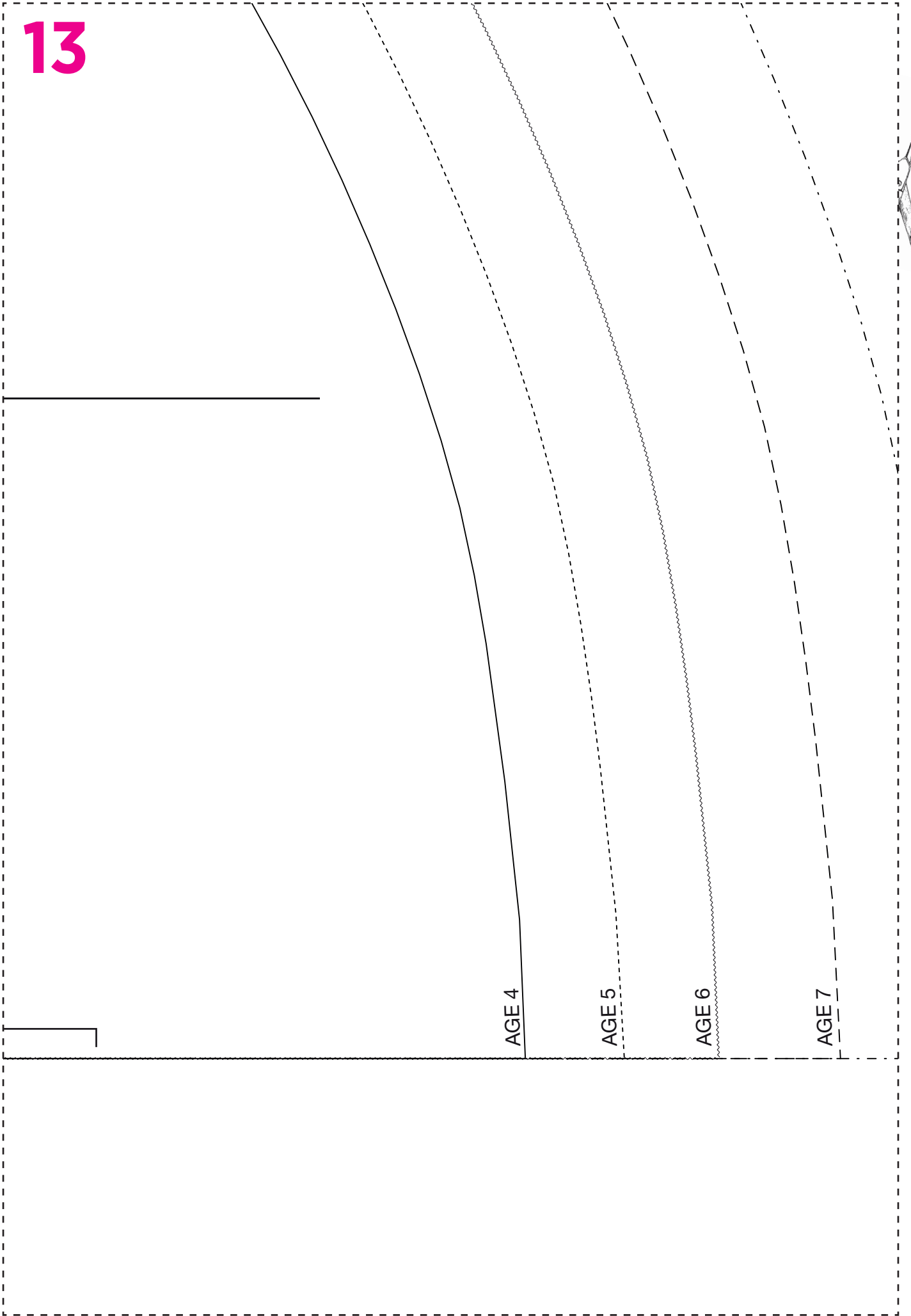
GRAIN LINE



SKATER DRESS
SKIRT
CUT 2 on FOLD
(SIZES 4Y to 8Y)

FOLD

13



AGE 4

AGE 5

AGE 6

AGE 7

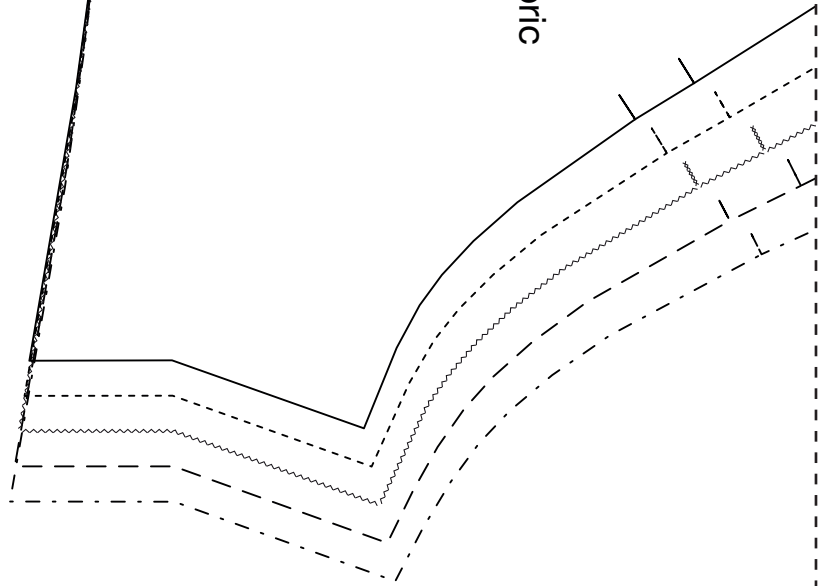
14



GRAIN LINE



SKATER DRESS
SLEEVE - Contrast Fabric
CUT 1 PAIR
(SIZES 4Y to 8Y)



AGE 8

15

AGE 4
AGE 5

