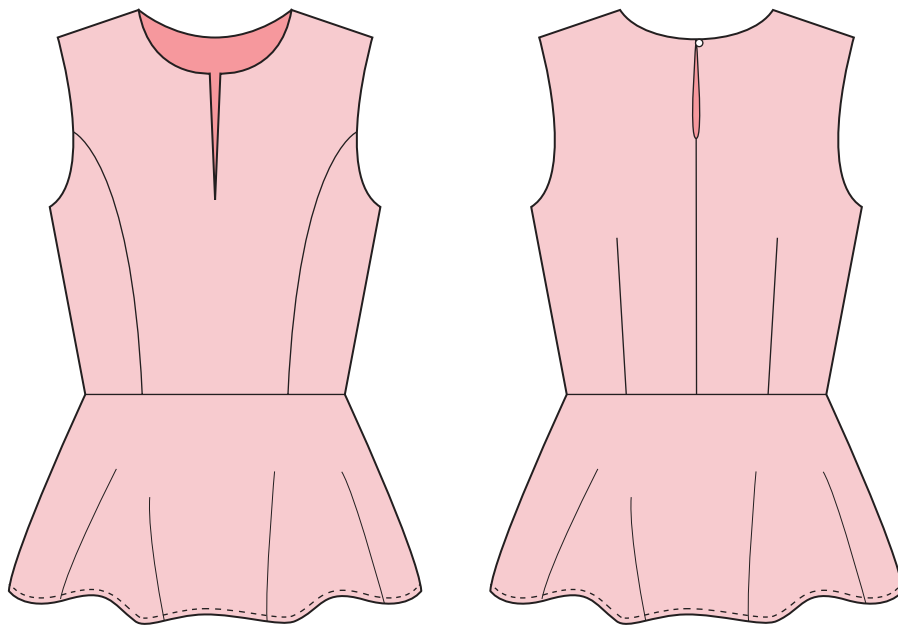


spit up & *stilettos*

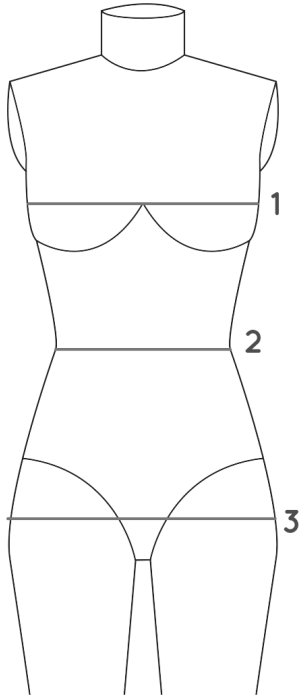


SANDRA PEPLUM

Level: Medium | Time: 2-3 Hours | Pages: 21

A sophisticated peplum top with a button back closure, front slash opening, princess seams, back darts and a full lining.

Size Chart



Size	Numeric Size	Bust	Waist	Hips
XS	0	33"	25"	35"
XS	2	34"	26"	36"
S	4	35"	27"	37"
S	6	36"	28"	38"
M	8	37"	29"	39"
M	10	38"	30"	40"
L	12	39.5"	31.5"	41.5"
L	14	41"	33"	43"
XL	16	43"	35"	45"
XL	18	45"	37"	47"

(1) BUST: Measure around the fullest part of your bust and keep the measuring tape parallel to the floor.

(2) WAIST: Measure around the smallest part of your waist.

(3) HIP: Measure around the fullest part of your hip and keep the measuring tape parallel to the floor.

Supplies

- Fabric
- Lining
- Polyester thread
- 1 Button (your choice)
- 12" Invisible Zipper

Tools

- Fabric scissors
- Appliqué scissors
- Pins
- Chalk or marking pen
- Bodkin (for button loop)
- Tape (for piecing pattern)
- Paper scissors (to cut pattern)

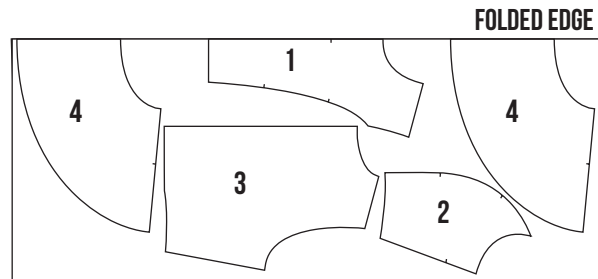
Fabric

This top can be made from a variety of light to medium weight woven fabrics such as cotton, wool or suiting fabrics.

Fabric Usage

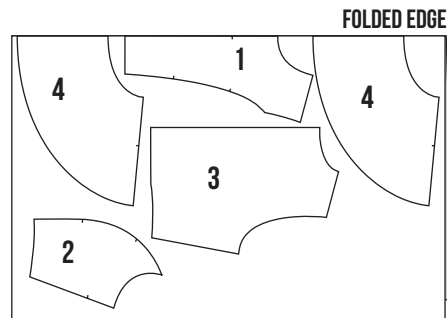
45" WIDE

You will need 1 $\frac{1}{3}$ yards for sizes 0 - 10 and 1 $\frac{1}{2}$ yards of fabric for sizes 12 - 18. If you are doing a stripe or plaid, you will need an extra $\frac{1}{2}$ to 1 yard of fabric.



60" WIDE

You will need 1 yard for sizes 0 - 10 and 1 $\frac{1}{4}$ yard for sizes 12 - 18. If you are doing a stripe or plaid, you will need an extra $\frac{1}{2}$ to 1 yard of fabric.



LINING

For 45" wide lining, you will need 1 yard of fabric. For 60" wide you will need $\frac{5}{8}$ of a yard. Remove the peplum piece from the layout guide and adjust pieces to fit prior to cutting.

Pattern Key

GRAIN LINE

This red arrow indicates your grain line, which you should align with the grain of your fabric. Don't know what grain line or grain is? Let us explain. When fabric is made it is woven with threads that go in two different directions. Lengthwise, which spans the cut edges and crosswise, which spans the selvage edges (the selvage is the band of tightly woven fabric that runs up either side). The lengthwise direction is the grain of your fabric and what you use to line up your grain line.



FOLD LINE

This means you line up the edge with the folded edge of your fabric before you cut.



First Things First

FIND YOUR SIZE

Using the size chart on the previous page, find your size. If you are in between, you can draw a new pattern line between the two sizes or simply choose the larger size.

PIECE TOGETHER YOUR PATTERN

At the end of these instructions, you will find your PDF pattern. On the first page, there is a 2" x 2" test square. Measure this square with a ruler to verify that the pattern is the correct size and then cut out each 7" x 9.5" rectangle. Tape the pieces together matching the colors/letters/numbers, then cut out your pattern size.

LAY OUT YOUR PATTERN

Using the fabric layout in the Fabric Usage section as a guide, lay out your pattern pieces. Use either pins or pattern weights (we like the latter option) to keep your pattern in place. Pay attention to the fabric grain line and, if using a plaid or stripe fabric, make sure to line up the stripes.

TRACE THE PATTERN

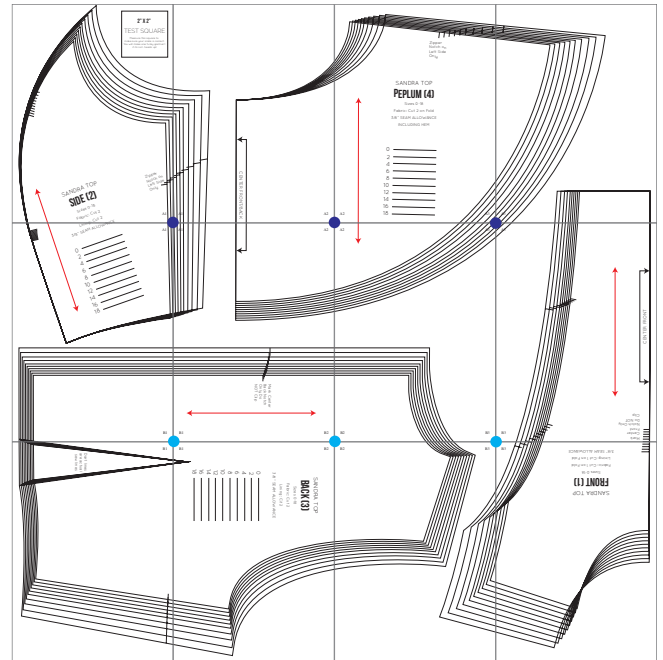
Trace your pattern edges onto your fabric by using chalk, pencil, or carbon paper. Transfer all markings, notches, darts and center front and back lines. Trust us. It's really no fun to have to come back and mark them later.

CUT IT OUT

You know that pattern tracing you just did? Well, cut along your marking lines.

SEAM ALLOWANCE

This pattern includes 3/8" seam allowances unless otherwise stated. Don't worry, we will let you know in the instructions when you're sewing a piece with a different seam allowance.



.....
• If this is your first time making this pattern, it's always a good idea to make a muslin to test the fit and make sure it flatters your body type. A muslin also lets you know what areas need to be altered. For a quick alteration guide or if you have any fit questions, go to Spitupandstilettos.com
.....

Instructions Page 1

NOTE: Trim 1/8" off the neckline and armholes of your lining pieces, this will make it so the lining will not show on your finished garment from the right side.

Darts

1. Start off by pinning the FRONT with the SIDE, lining up the notches.
2. Stitch your pieces together.
3. Stitch closed your back dart on the BACK pieces.
4. Line up your shoulder seams on the FRONT and BACK pieces right sides together and stitch closed. Press open.
5. Repeat above steps for the lining pieces.



Instructions Page 2

Lining

1. Pin the lining pieces to the main pieces, right side together along the neckline, armholes and center back down to the notch. Make the edges line up, even though your lining is smaller.
2. Take your button loop (see how to make at bottom of page) and pin it in between the main and lining layers on the left side at the top of the center back seam. The loop should extend into the body.
3. Stitch together along the armholes, neckline and down to the center back notch. When stitching the neckline, stop at center front and stitch down to the front notch and back up to the neckline, leaving a 1/8" gap.
4. Trim down your seam allowance to 1/8" and cut along center front in-between your stitch lines.
5. Turn your top right side out by pulling the back pieces through your shoulder seams. Press flat and make sure your corners are crisp.
6. Under-stitch the lining to the seam allowance. You won't be able to under-stitch near the front neckline or corners. Just get as close as you can.
7. On the side opposite your button loop, stitch on your button.



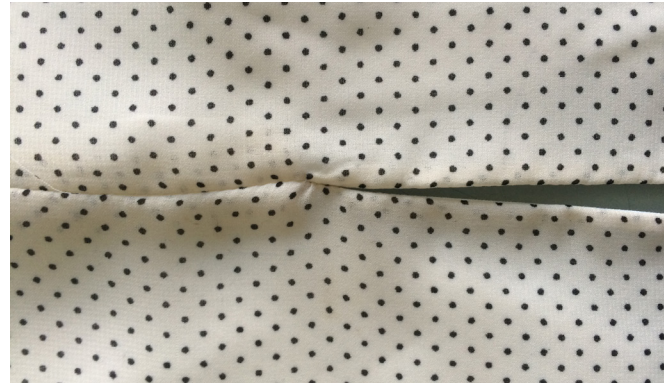
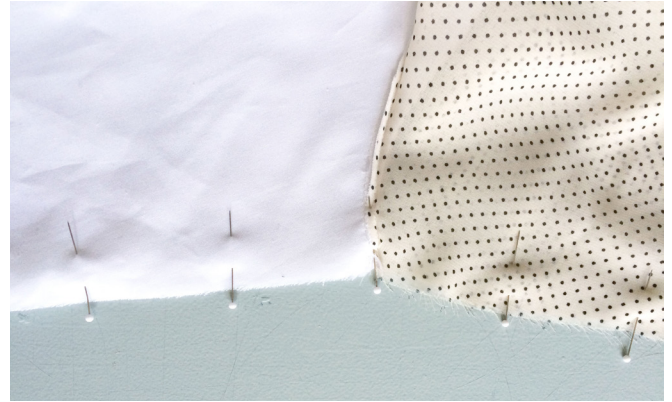
MAKING A BUTTON LOOP

Start by taking a 4" x 1" piece of fabric and folding it lengthwise. Sew a 1/4" seam down the middle and trim the seam allowance down to 1/8". Next turn the piece right side out using a bodkin and voile you have a button loop. Trim to fit.

Instructions Page 3

Side Seams

1. With right sides together, match your side seam on your lining and main pieces. Make sure the underarm seam is lined up.
2. Stitch closed and press open. On the left side of your pieces, make sure you only stitch to the zipper notch leaving an opening for the zipper.
3. With right sides together match your lining and main pieces along the center back seam. Do not pin past the center back notch.
4. Stitch closed your back seam on both your lining and main pieces up to the center back notch. Press open. Your top should be right side out.



Peplum

1. Stay stitch along the waistline of your PEPLUM piece to prevent stretching.
2. With right sides together, stitch closed your side seams. On the left side of the peplum, make sure you only stitch from the zipper notch down to the hem.
3. Press side seams open.
4. Line up the waistlines of your PEPLUM and main pieces right sides together. Do not stitch your lining waistline.
5. Stitch your waistline and press your seam allowance up.
6. On the left zipper opening, press back your seam allowance.



Invisible Zipper

1. Take your invisible zipper over to your iron and with it open and wrong side up, press the teeth open (use the synthetic setting).

2. Pin the invisible zipper in place on your main pieces only catching the seam allowance. The zipper teeth should not be visible from the right side of the garment.

3. Using your zipper foot, stitch down the length of your invisible zipper on both sides. You may need to help your zipper foot by slowly uncurling the zipper to get a closer edge depending on your foot. Remember to never sew over pins.

4. Zip up your invisible zipper to make sure everything lines up and there are no puckers before continuing. If there is, no worries! Grab your seam ripper then try again. Practice make perfect.

5. Turn your top right side out, and line up the zipper opening of the lining with your zipper. Pin down the lining seam allowance to the zipper tape on the inside of the garment. You will need to turn your top inside out to accomplish this.

6. Stitch your lining to the zipper tape, using your zipper foot and stopping $\frac{3}{8}$ " from the waistline of your lining piece.

TIDBIT: You can adhere strips of fusible interfacing along the zipper seam allowance to help it keep shape.



Instructions Page 5

Lining

1. Press up your waistline seam allowance on your lining.
2. Pin down your lining 1/16" past the waistline seam.
3. On the face side of the garment, stitch in the ditch along the waistline seam to attach the lining to the main piece then press flat.



Hem

1. You have a 3/8" hem allowance. You can either use your rolled hem foot or follow the steps below.
2. Stitch 1/4" away from the edge along your hem.
3. Press over your seam allowance using your stitching as a guide.
4. Stitch 1/8" from the folded edge.
5. Using your appliqué scissors, trim off the excess seam allowance.
6. Fold over your seam allowance again, using your stitch line as a guide. You can fold it as you are sewing in the next step.
7. Stitch along the folded edge of your seam allowance.
8. Press your hem flat and you are done!

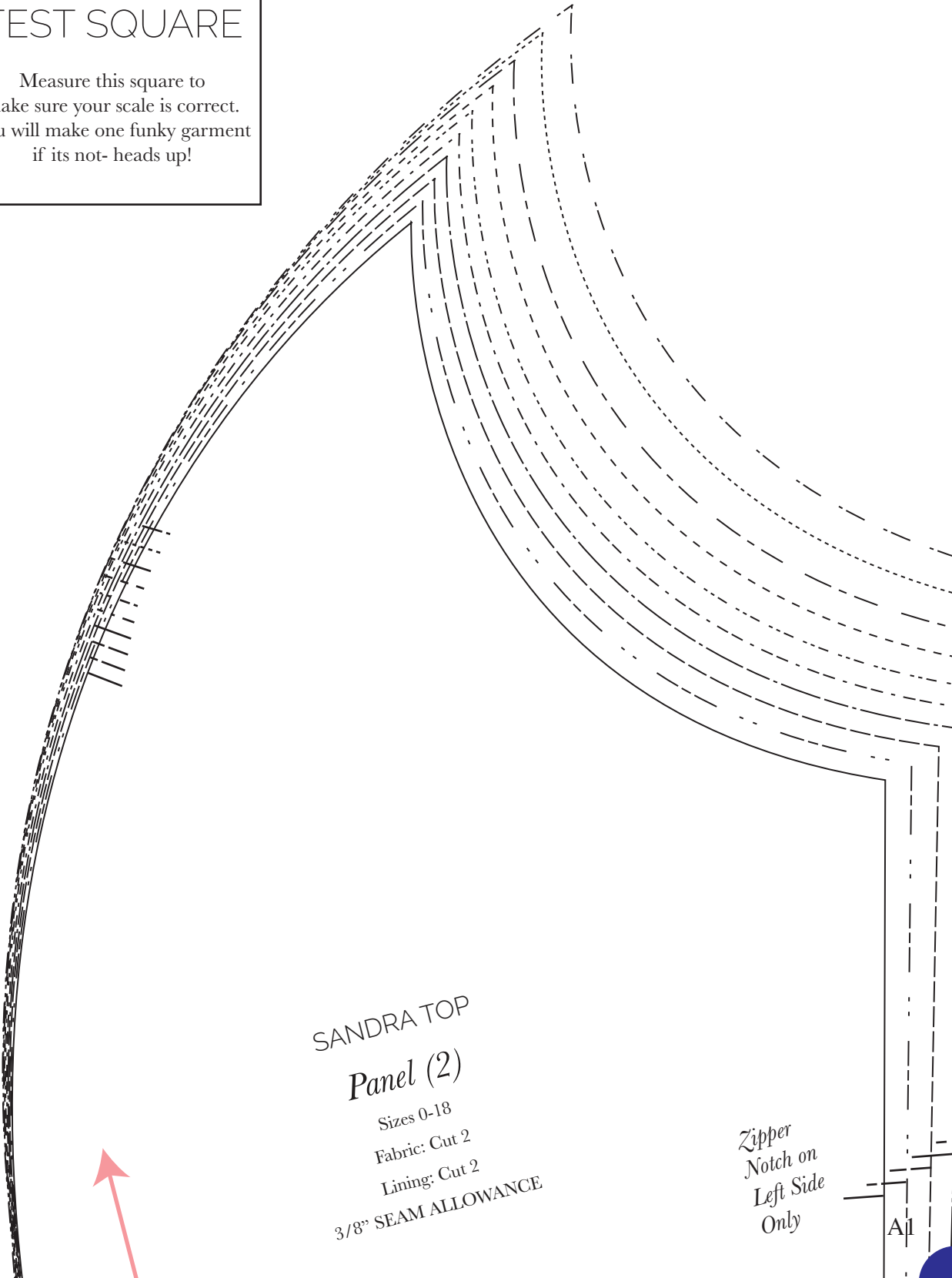


Guess who has a brand new top? Hopefully you but if you find anything wrong with this pattern, please let me know at lauren@spitupandstilettos.com

2" x 2"

TEST SQUARE

Measure this square to
make sure your scale is correct.
You will make one funky garment
if its not- heads up!



SANDRA TOP

Panel (2)

Sizes 0-18

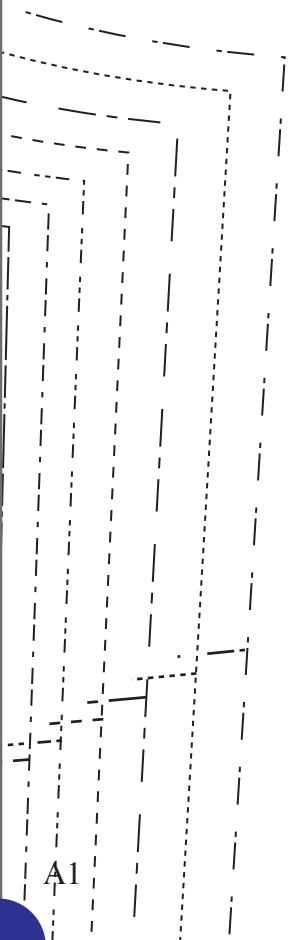
Fabric: Cut 2

Lining: Cut 2

3/8" SEAM ALLOWANCE

Zipper
Notch on
Left Side
Only

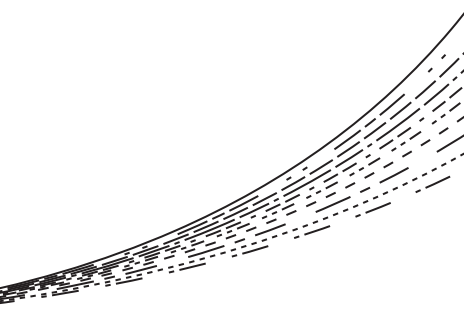
A1



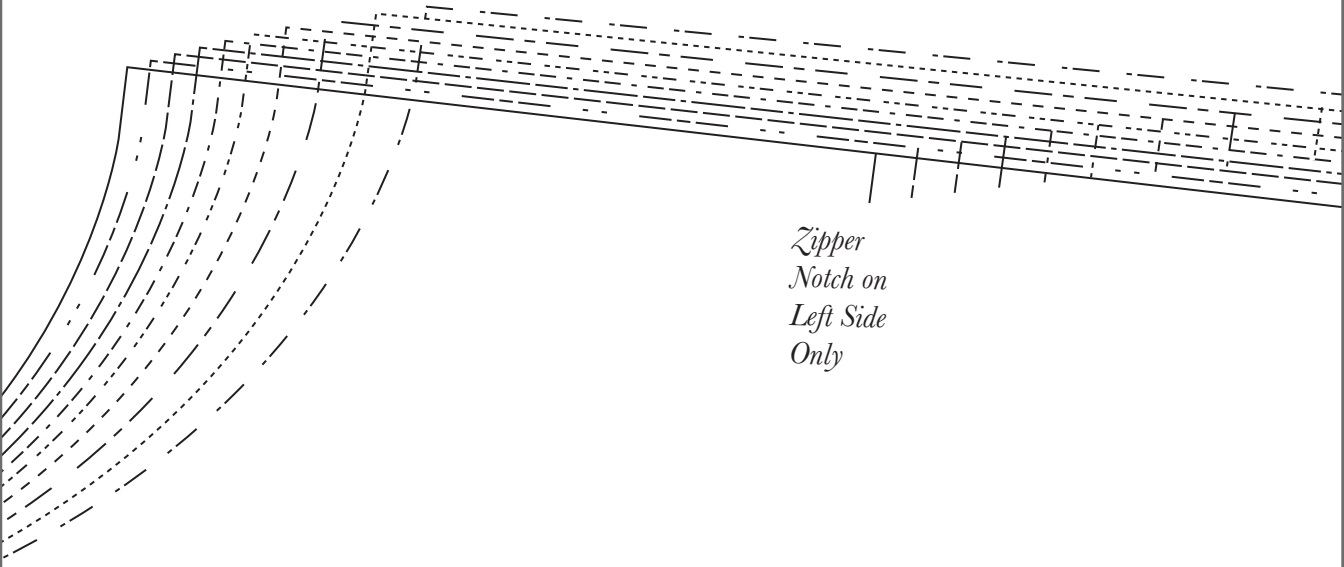
A1



CENTER FOLD



A2



*Zipper
Notch on
Left Side
Only*

SANDRA TOP

Peplum (4)

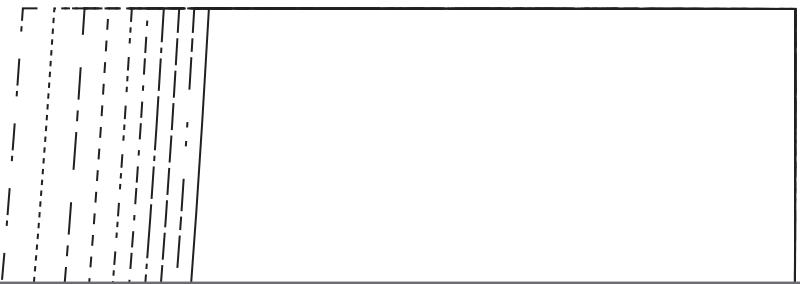
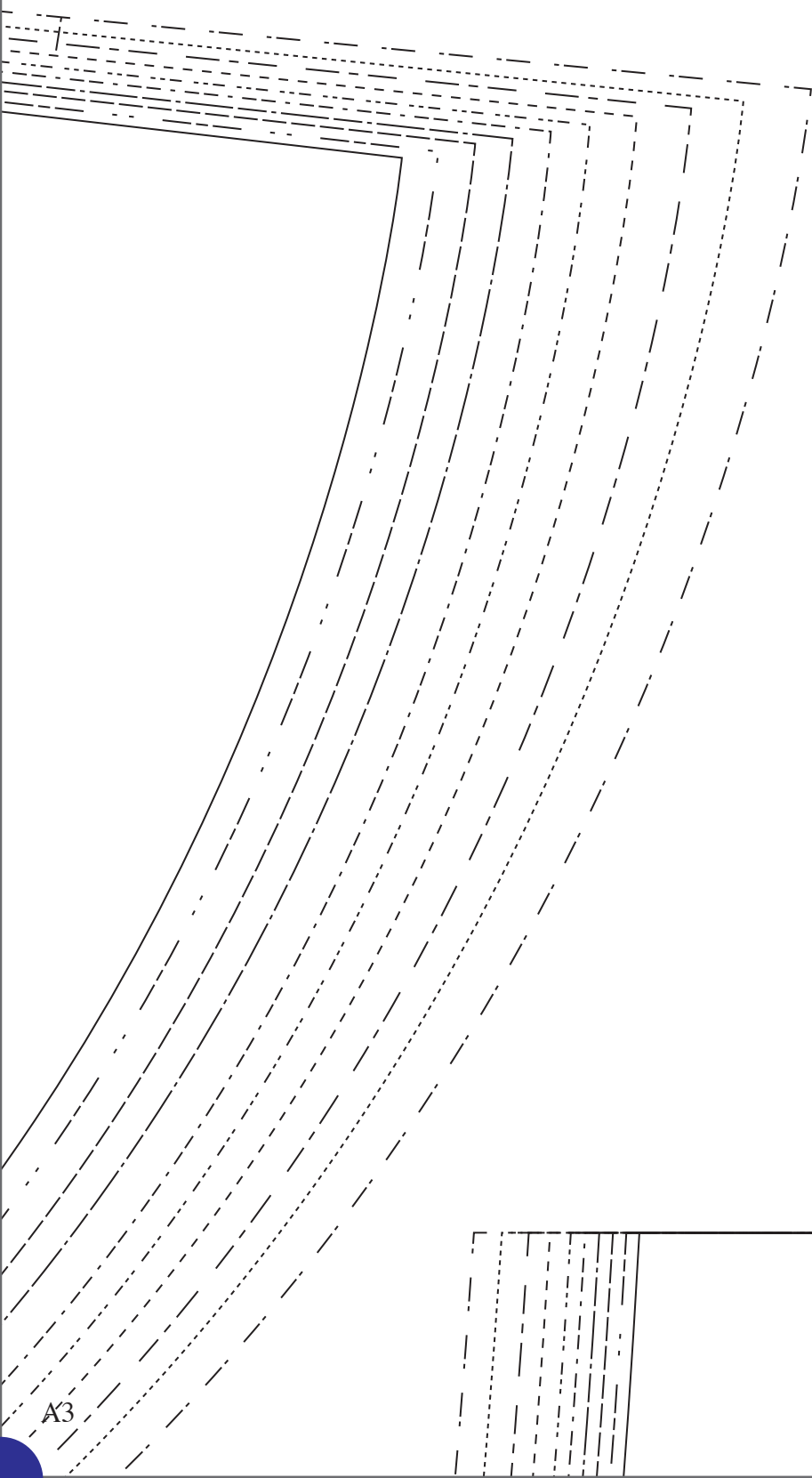
Sizes 0-18

Fabric: Cut 2 on Fold

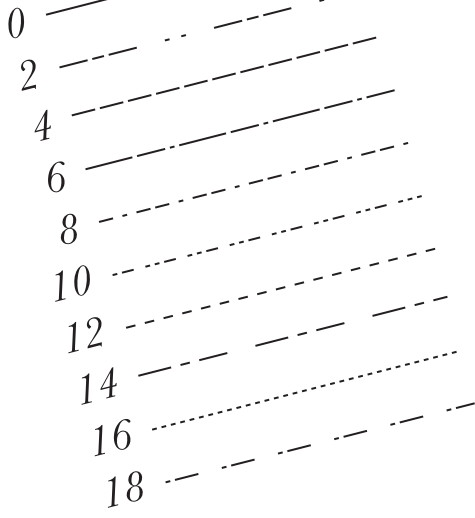
3/8" SEAM ALLOWANCE

INCLUDING HEM

- 0 —————
- 2 - - - - -
- 4 - - - - -
- 6 —————
- 8 - - - - -
- 10 - - - - -
- 12 - - - - -
- 14 - - - - -
- 16 - - - - -
- 18 - - - - -

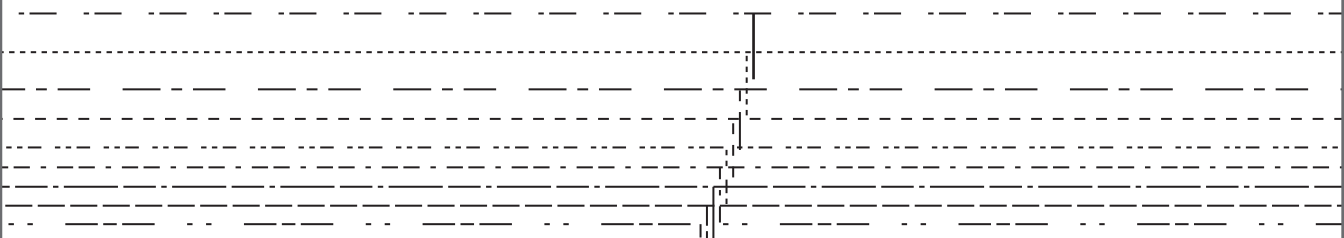
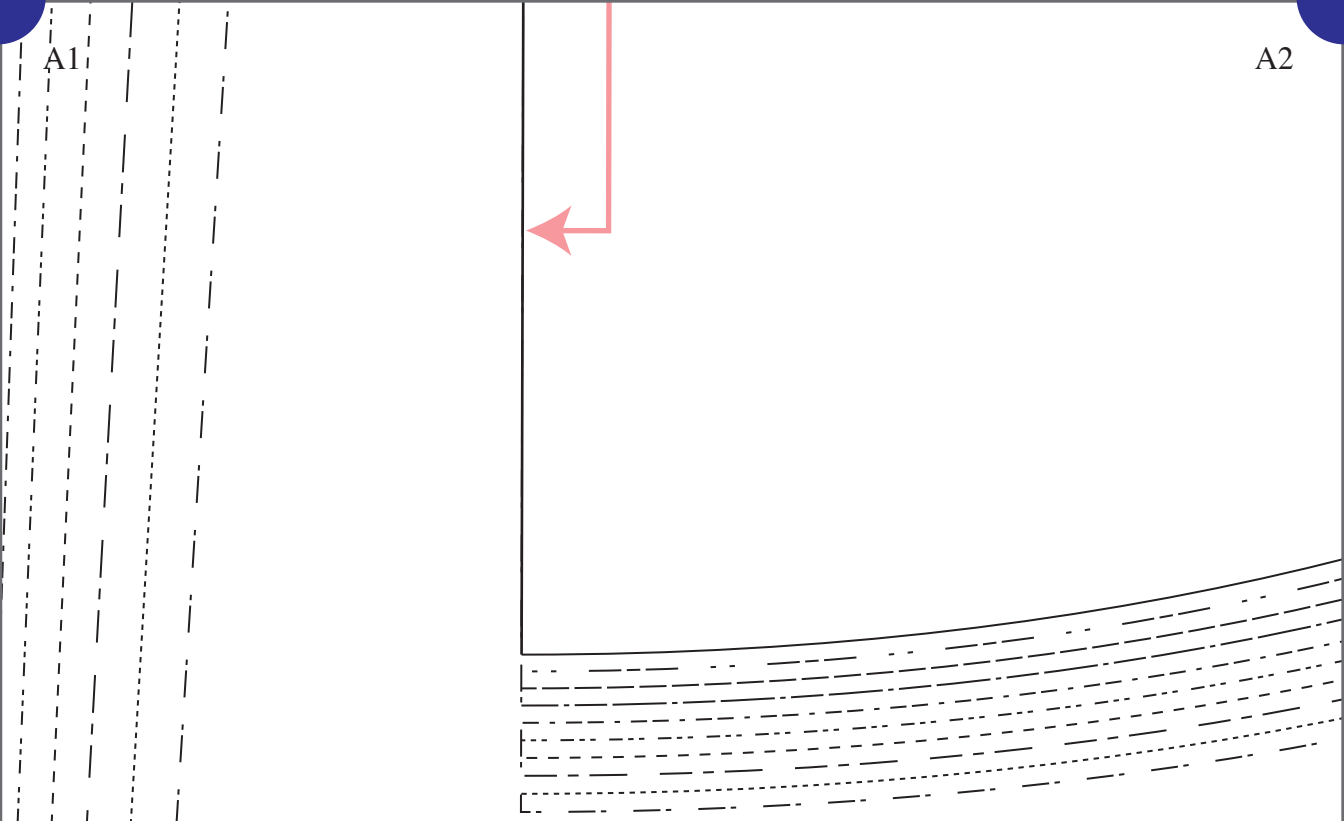


A3



A1

A2

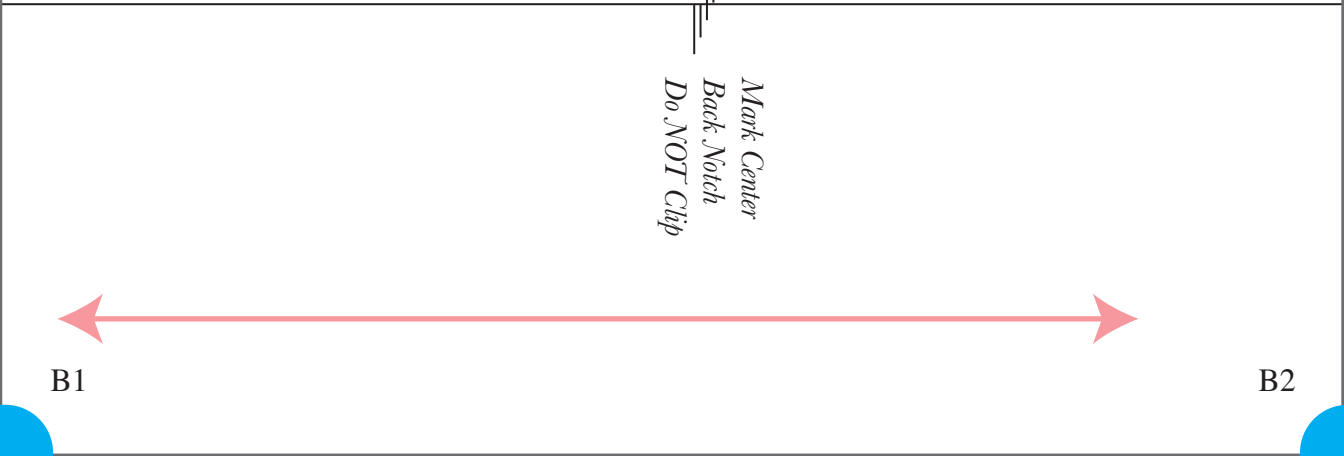


Mark Center
Back Notch
Do NOT Clip



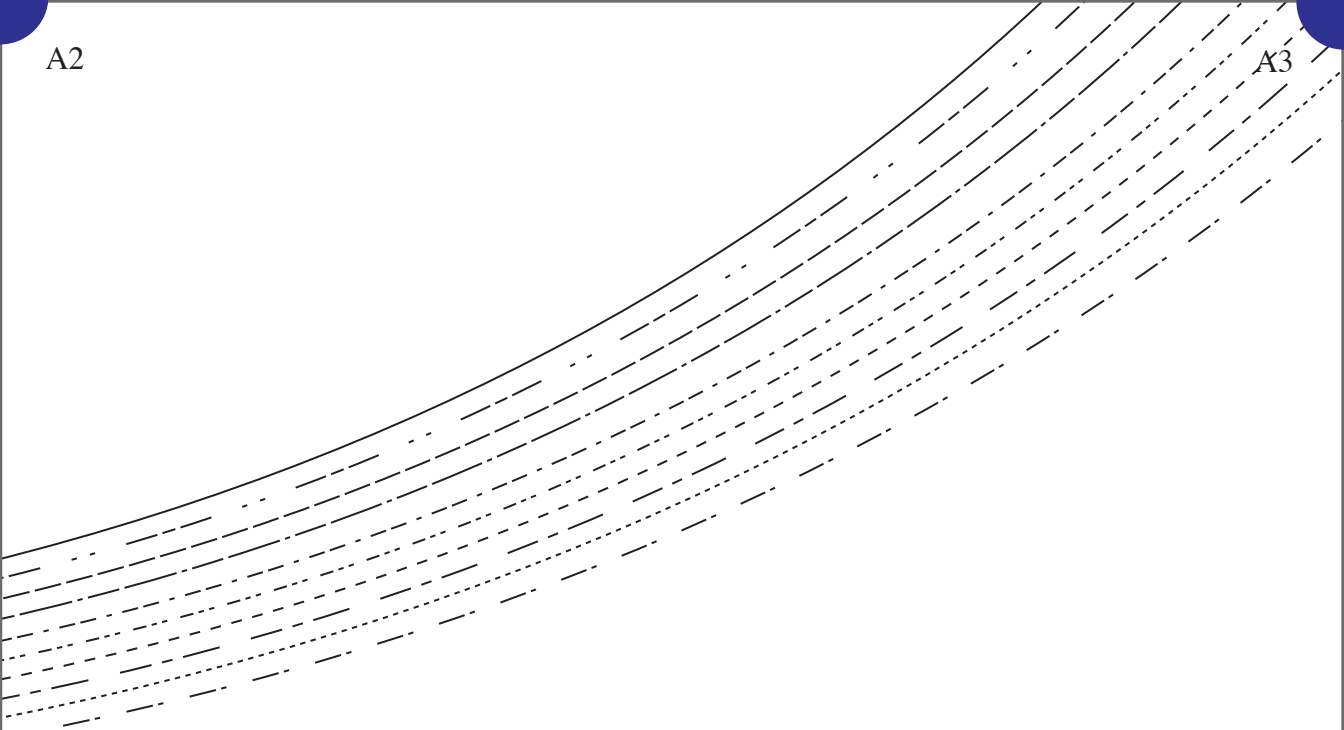
B1

B2



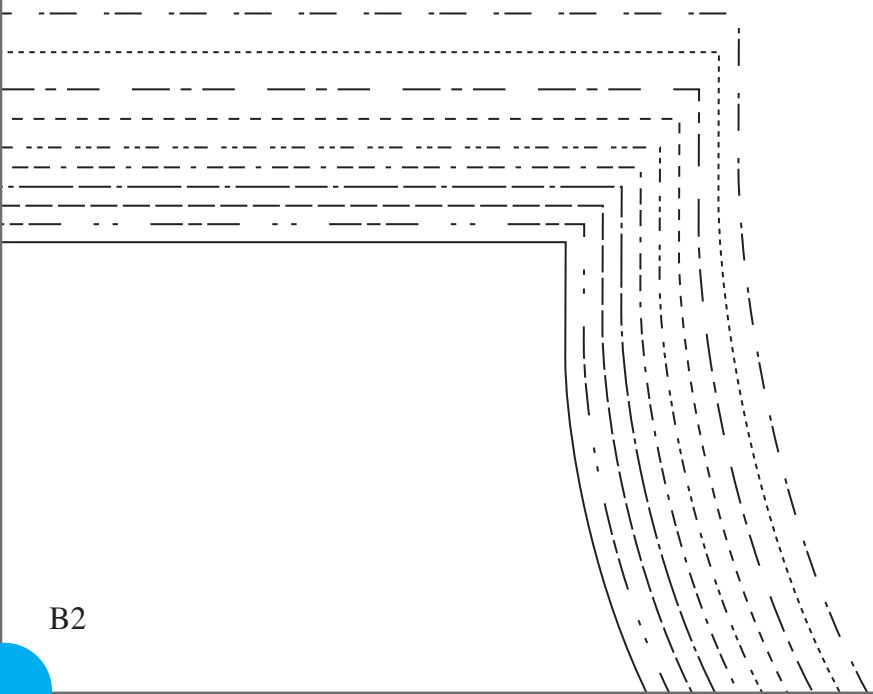
A2

A3



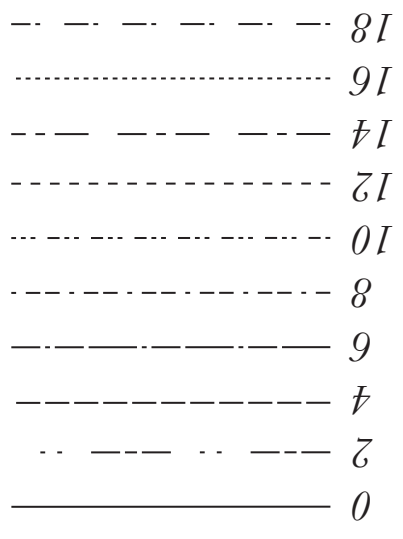
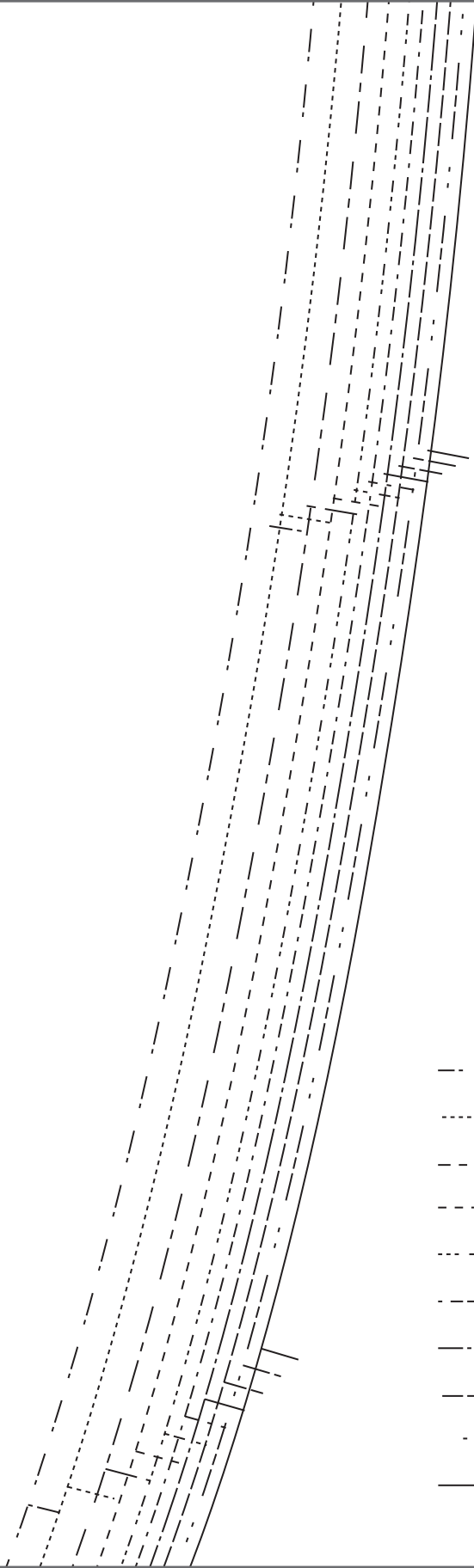
B2

B3



A3

B3



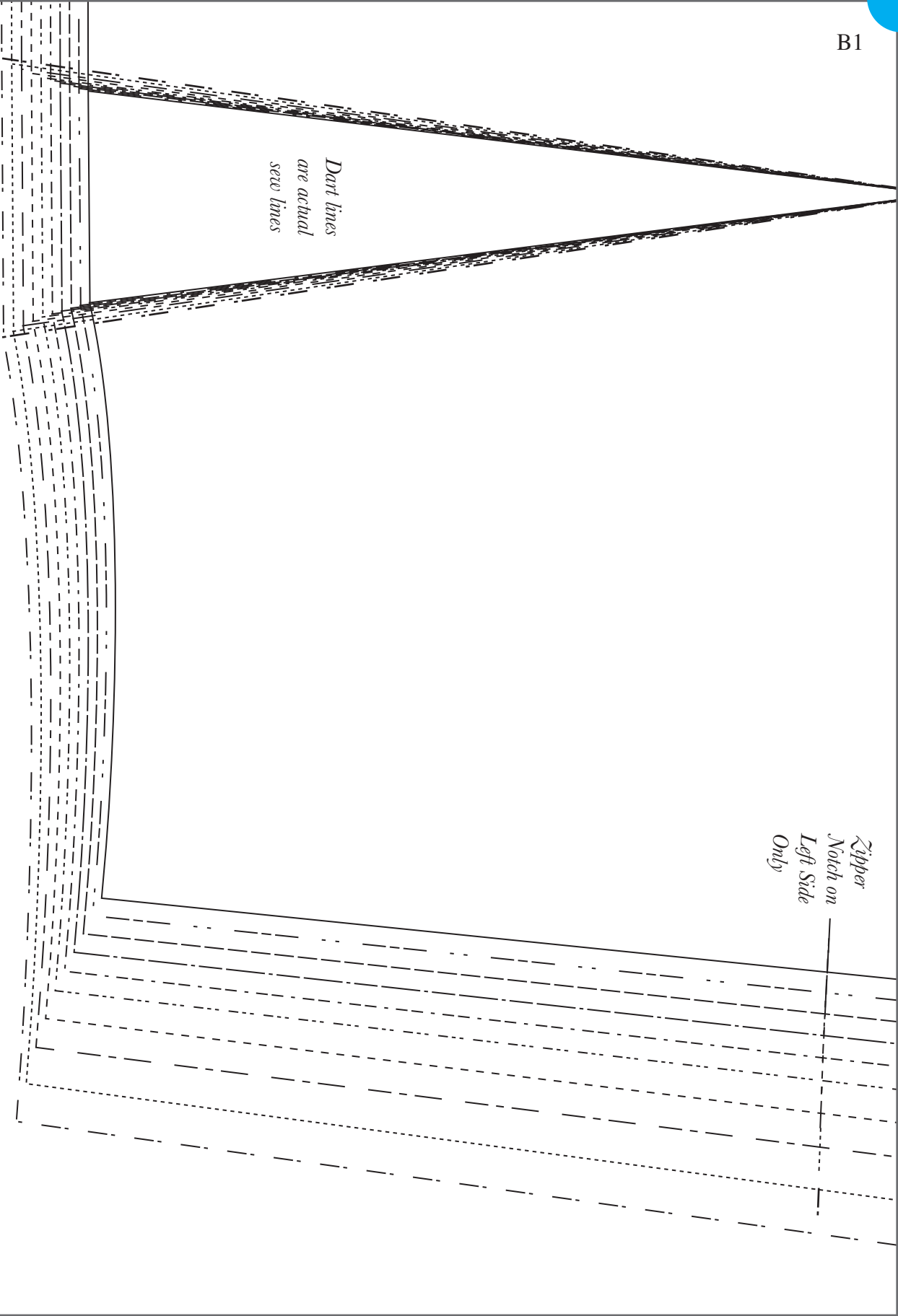
Mark Center
 Front Notch
 Only Do NOT
 Clip



CENTER FRONT

*Dart lines
are actual
sew lines*

*Zipper
Notch on
Left Side
Only*



SANDRA TOP

Back (3)

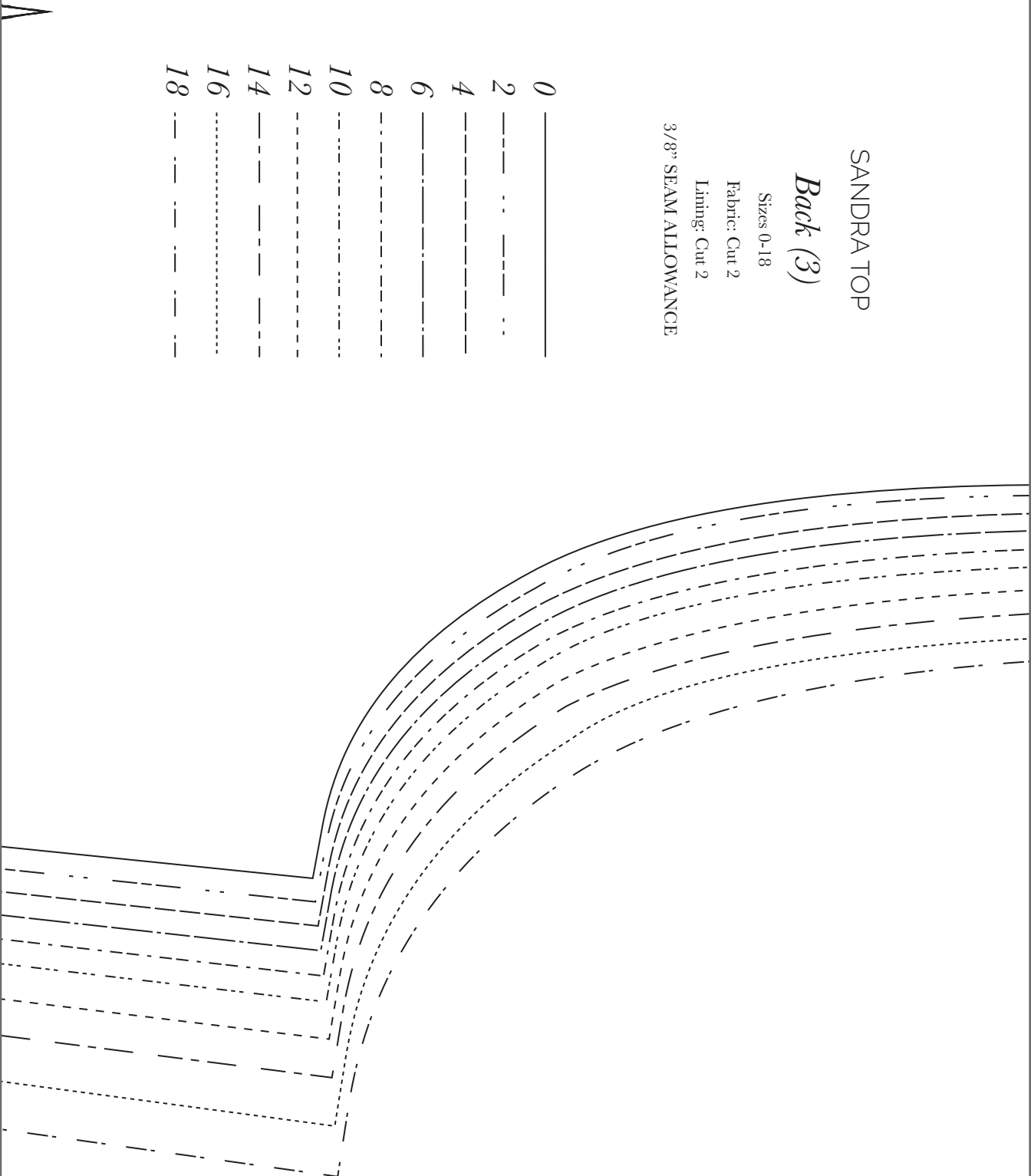
Sizes 0-18

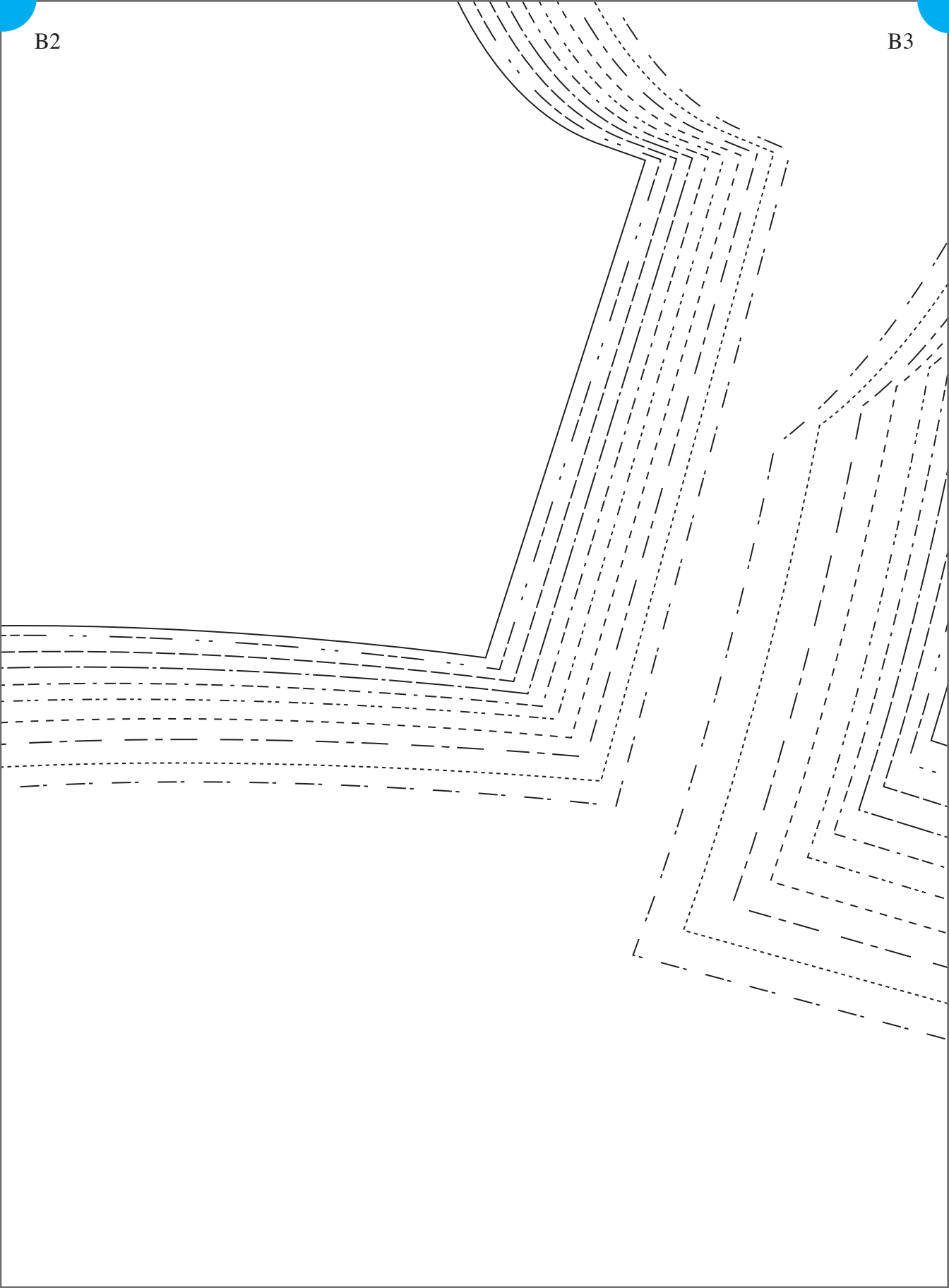
Fabric: Cut 2

Lining: Cut 2

3/8" SEAM ALLOWANCE

- 0 _____
- 2 - - - - -
- 4 - - - - -
- 6 - - - - -
- 8 - - - - -
- 10 - - - - -
- 12 - - - - -
- 14 - - - - -
- 16 - - - - -
- 18 - - - - -





SANDRA TOP

Front (1)

Sizes 0-18

Fabric: Cut 1 on Fold

Lining: Cut 1 on Fold

3/8" SEAM ALLOWANCE

B3

