

MAKE UP IN  
LINEN, COTTON,  
BROCADE,  
DENIM OR WOOL  
WEAVES

### *sew a shift dress*

**1** Visit [www.sewmag.co.uk](http://www.sewmag.co.uk) to download and print the pattern. Take your measurements and decide which size to cut. Make any fit adjustments. Using the cutting guide, cut all pieces from fabric, transferring the dart markings from the front and back skirt pieces and the back bodice pieces to all layers. Pin, tack and stitch the darts, then press them towards the centre.

**2** With right sides together and matching the notches, pin the left front side bodice to the left side of the centre front bodice. Repeat with the right front side bodice and stitch [1]. Clip into the seam allowance at the curves, taking care not to cut any stitches. Press the seams open.

**3** With right sides together, match the front and back bodice pieces at the shoulder seams and side seams. Pin and stitch [2]. Try on the bodice and make any adjustments. Press the seams open and finish the raw edges with an overlock or zig zag stitch.

**4** Pin the back skirt seam from the hemline up to the position of the bottom end of the zip, with right sides together. Stitch, then press the seam open. With right sides together, match the side seams of the skirt and pin. Stitch the seams and press them open [3]. Try on the skirt and make any adjustments.

**5** With right sides together, pin the bodice to the skirt, matching the side seams and the darts at the back. At the front, match the line of the princess seams with the skirt darts. Pin, tack and stitch, then press the seam open and finish the raw edges [4]. Insert an invisible zip into the back opening, ensuring that you align the top of the zip tapes with the raw edge at the back neck.





FACINGS  
ENSURE A  
PROFESSIONAL  
FINISH

get  
the  
book



For this and many more great garment patterns, check out *The Great British Sewing Bee: Sew Your Own Wardrobe* by Tessa Eveleigh (£25, Quadrille) Photos by Tiffany Mumford and Charlotte Medlicott.

6 With right sides together, pin one back neck facing to each end of the front neck facing at the shoulder seams and stitch. Press the seams open. In the same way, pin, then stitch one back and one front armhole facing together at the shoulder and side seams. Press the seams open. Repeat for the other pair of armhole facings. At the outer edges of all the facings, turn and press a 1cm hem to the wrong side and stitch [5].

7 With right sides together, pin the neck facing to the dress. Start by matching the shoulder seams, then pin around the front neck facing and to one side of the back. Go back and pin the other side of the back facing, then stitch. Clip into the seam allowance at the curves and press it open, then press the facing to the inside of the dress.

8 With right sides together, pin the left armhole facing to the left armhole. Start by matching the shoulder seams and pin. Next, match the side seams and pin. Then secure between the two and stitch. Clip into the seam allowance at the curves [6]. Press the seam open, then press the facing to the inside of the dress, allowing it to overlap the neck facing. Secure at the seams with a few hand stitches. Repeat for the right armhole facing.

9 Turn in the raw edges of the back neck facing and slipstitch them discreetly in place down each side of the zip. Sew a small hook and eye firmly and neatly onto the inside of the dress above the zip. Hand stitch the hem.

*Think don't shrink!*

Always launder and iron your fabric before cutting to ensure it doesn't shrink once you've made your garment.

*stitch it with...*



brother

#### Brother Innov-is 20LE

The limited edition Innov-is 20LE offers excellent versatility when it comes to customisation. This great-value model has 40 built-in stitches including decorative designs and five buttonhole styles. Handy central controls make for ease of use including needle position up or down, speed control and reverse sewing. The back-lit LCD digital display shows the stitch pattern number and settings. Seven point feed ensures smooth fabric feeding and the drop feed option is great for quilting and embroidery. Other features include a quick set bobbin, twin needle key and free arm facility.

Priced £329, visit [www.brothersewing.co.uk](http://www.brothersewing.co.uk) or call 0333 777 4444 to find your nearest stockist.

*"To achieve the perfect fit, make adjustments at the pattern and shell stages"*

*the*  
**haberdashery**



#### Essex Linen

Dragonfly Fabrics has a great selection of Essex linen in a fantastic range of colours, priced £12.90 per metre, [www.dragonflyfabrics.co.uk](http://www.dragonflyfabrics.co.uk)

# Perfect fit shift dress

## Essentials

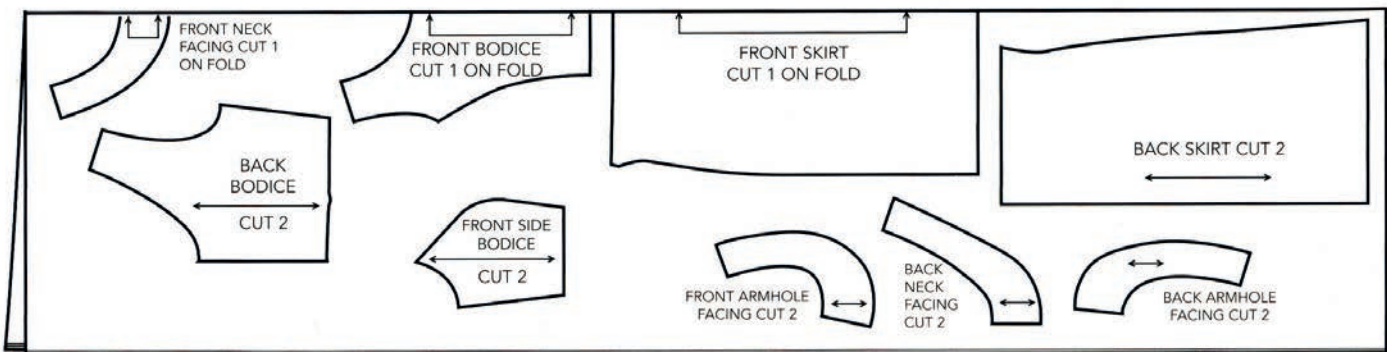
- Linen, 115cm wide, 2.3m
- Invisible zip, 36cm
- Coordinating sewing thread
- Small hook and eye

## Dimensions

Body Measurements	8	10	12	14	16	18
Bust (cm)	80	82.5	86.5	91.5	96.5	101.5
Waist (cm)	61	63.5	67.5	71	76	81.5
Hip (cm)	86	88	91.5	96.5	101.5	107

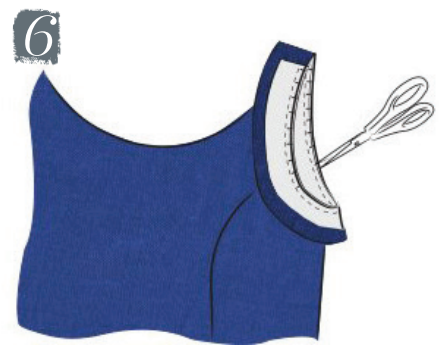
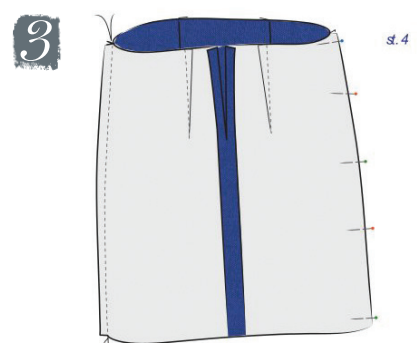
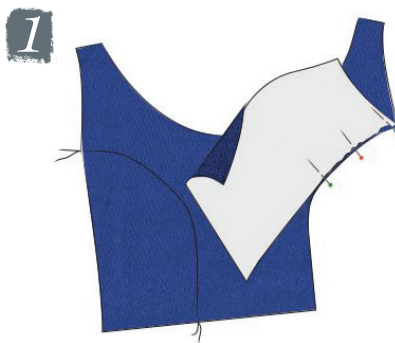
## Cutting guide

Front bodice, cut one on fold  
Front side bodice, cut two  
Back bodice, cut two  
Front neck facing, cut one on fold  
Back neck facing, cut two  
Front armhole facing, cut two  
Back armhole facing, cut two  
Front skirt, cut one on fold  
Back skirt, cut two  
A 1.5cm seam allowance is included throughout unless otherwise stated



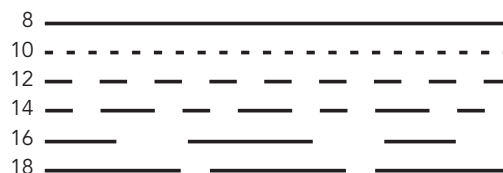
This timeless style works for all seasons

Every woman looks good in a classic shift dress, but it only works if the fit is perfect. A dress that skims the contours will always be more flattering than one that is skin tight, and the way to achieve that is by using a design with several points of adjustment. This design by Tess Evelegh has princess seams, darts and a waistline seam, all of which can be adjusted on the pattern before you cut it out, then fitted as you sew. Make in casual linen or printed silk for the festive season.



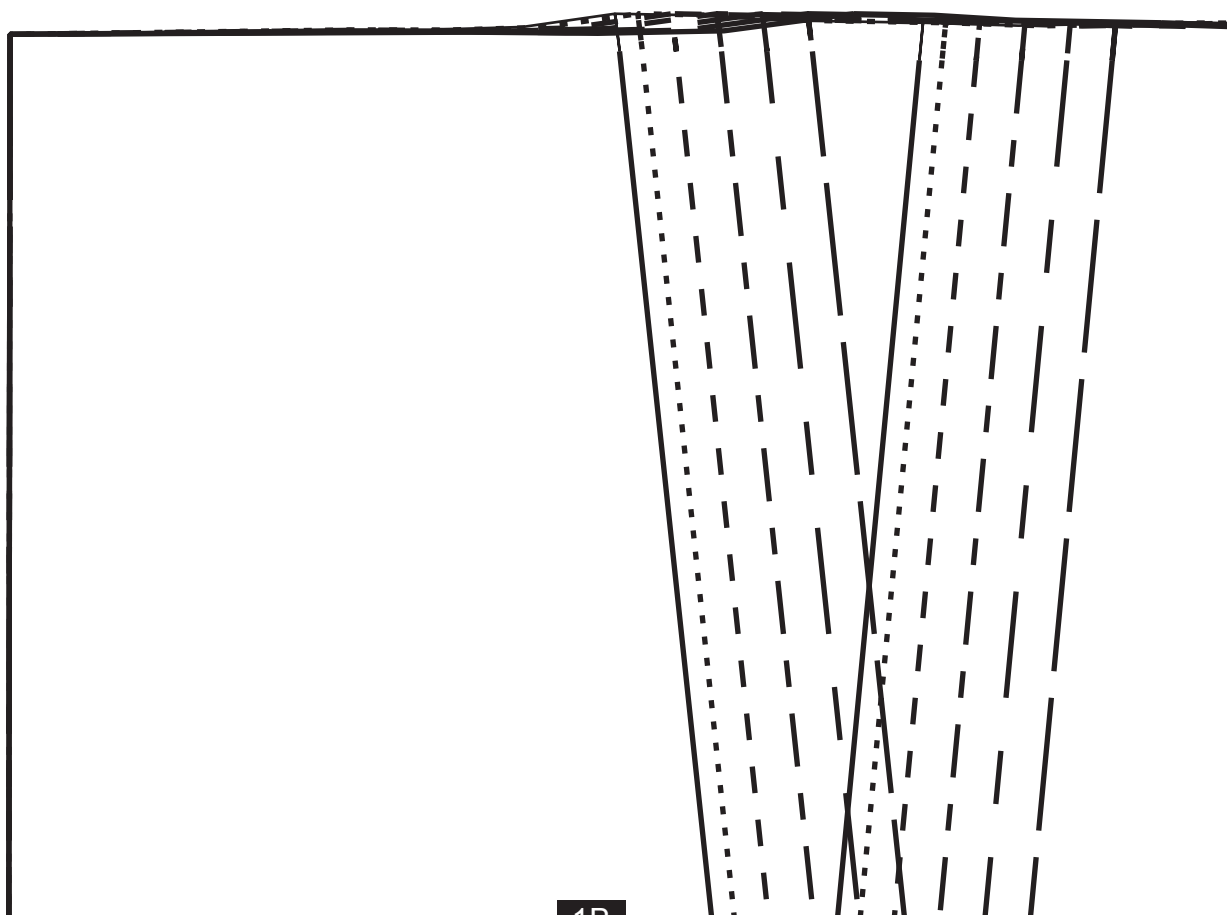
# THE GREAT BRITISH *Sewing Bee*

Shift & Full Skirt Dress pattern  
Project design © Love Productions 2013  
This design is protected by copyright  
and must not be made for resale.



## Measurements in inches

UK SIZE	8	10	12	14	16	18	20	22
US SIZE	4	6	8	10	12	14	16	18
EUROPEAN	36	38	40	42	44	46	48	50
BUST	33	34 <sup>1/2</sup>	36	37 <sup>3/4</sup>	39 <sup>1/2</sup>	41	43 <sup>1/4</sup>	45 <sup>3/4</sup>
WAIST	26 <sup>3/4</sup>	28 <sup>1/4</sup>	30	31 <sup>1/2</sup>	33	34 <sup>1/2</sup>	37	39 <sup>1/2</sup>
HIPS	36 <sup>1/4</sup>	37 <sup>3/4</sup>	39 <sup>1/2</sup>	41	42 <sup>1/2</sup>	44	46	48



1A

1B



TEST SQUARE  
10cm × 10cm  
4 inches × 4 inches

1A

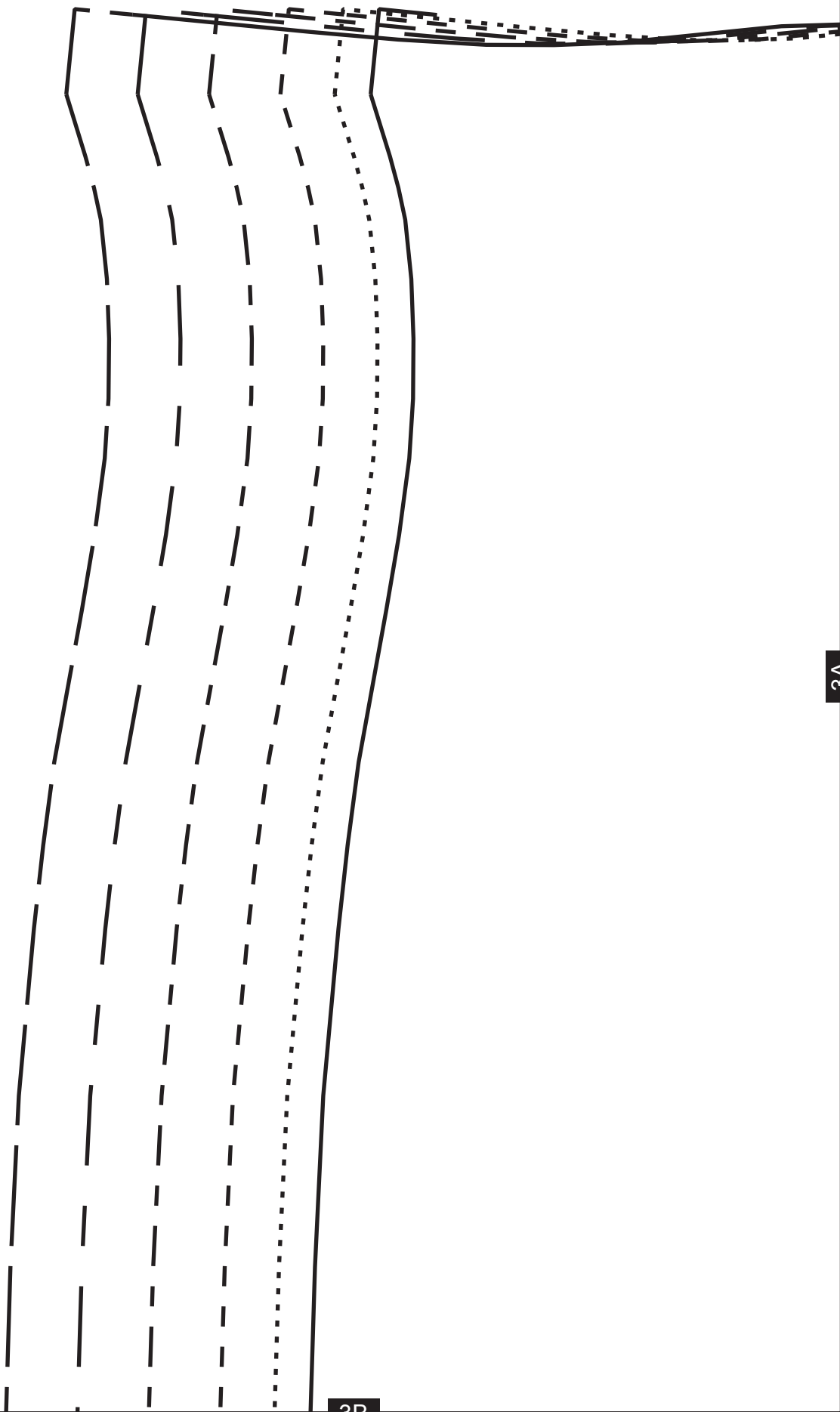
2A

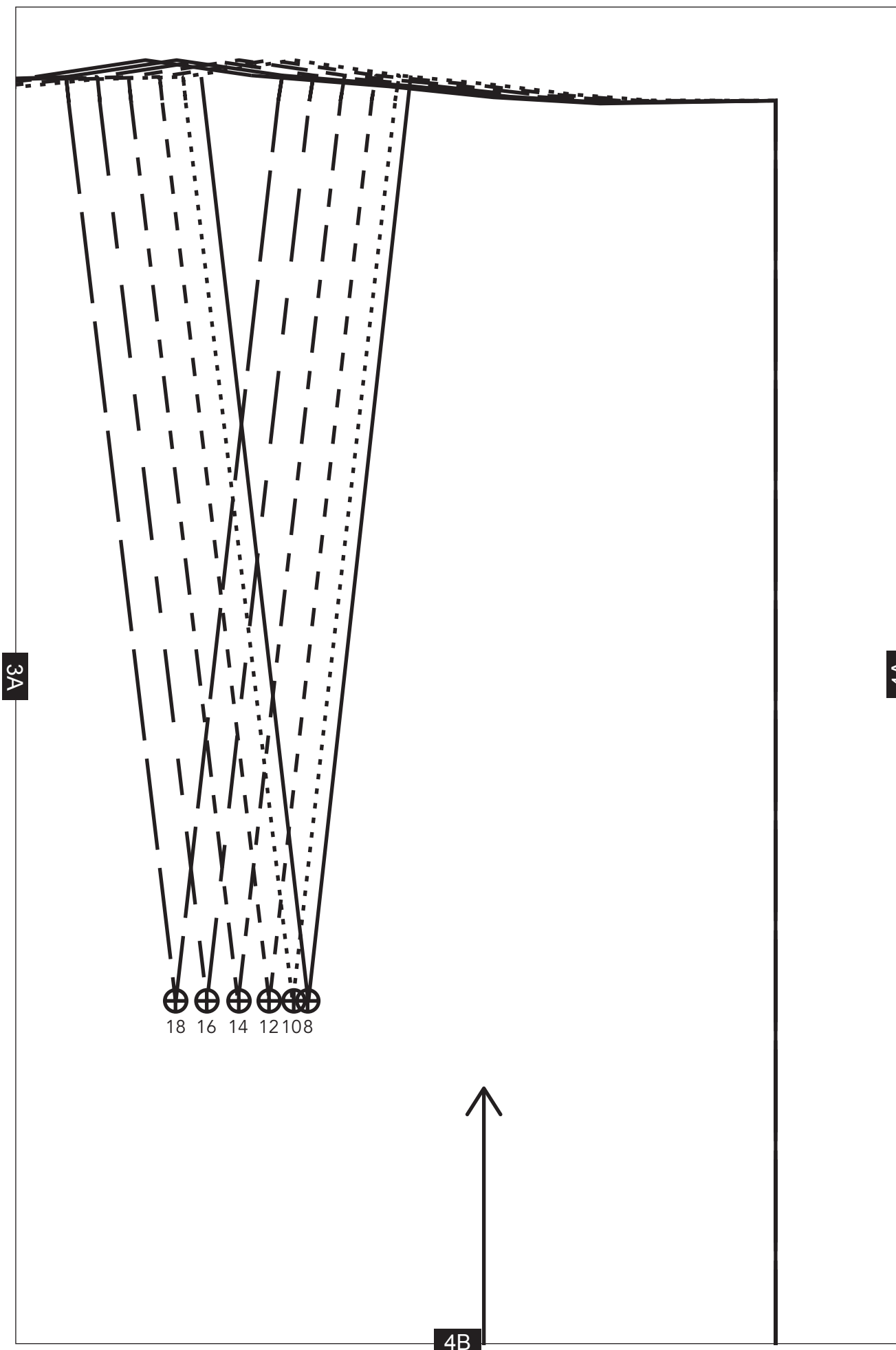
2B

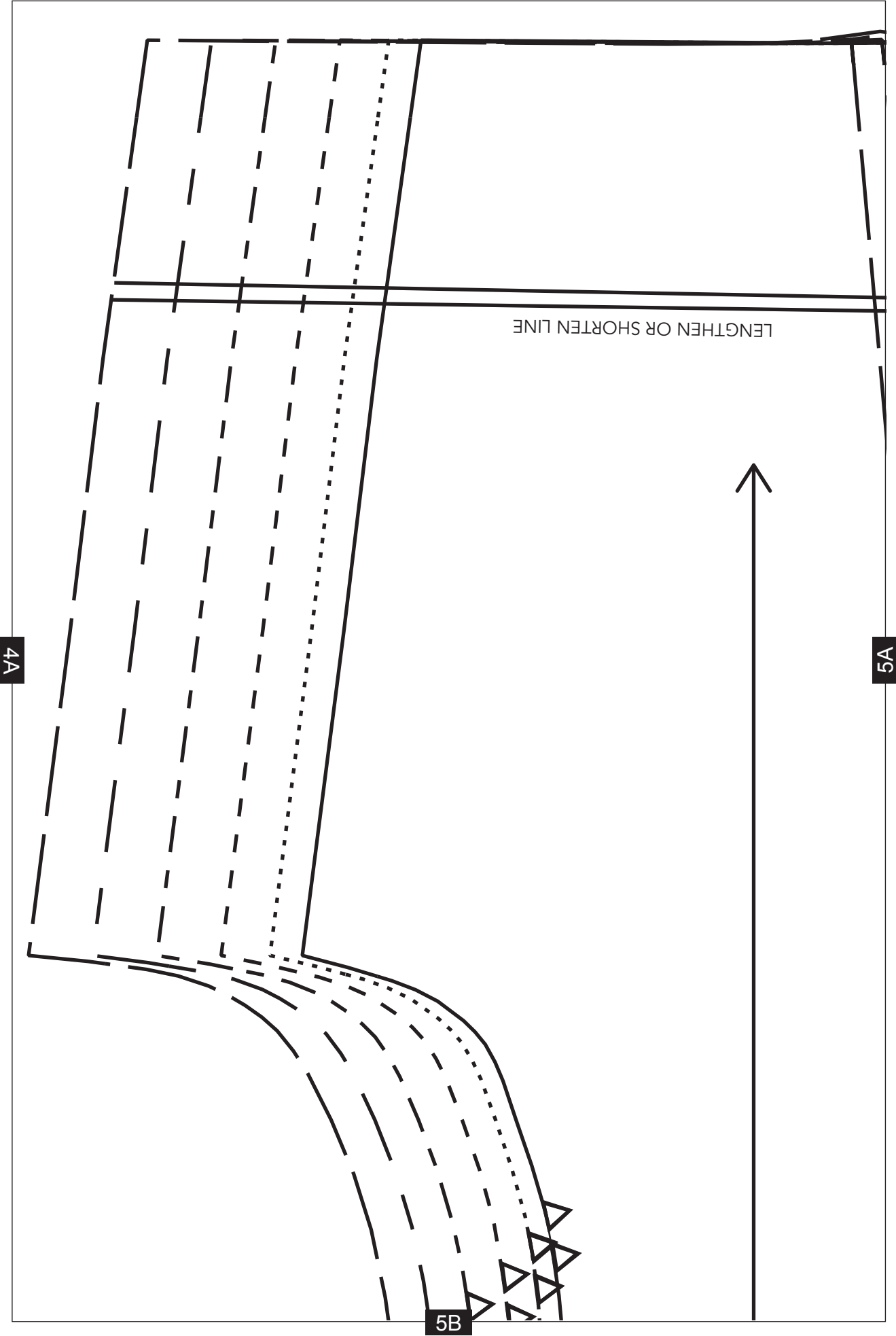
2A

3A

3B









SHIFT & FULL  
SKIRT DRESS  
BACK BODICE

8 10 12 14 16 18

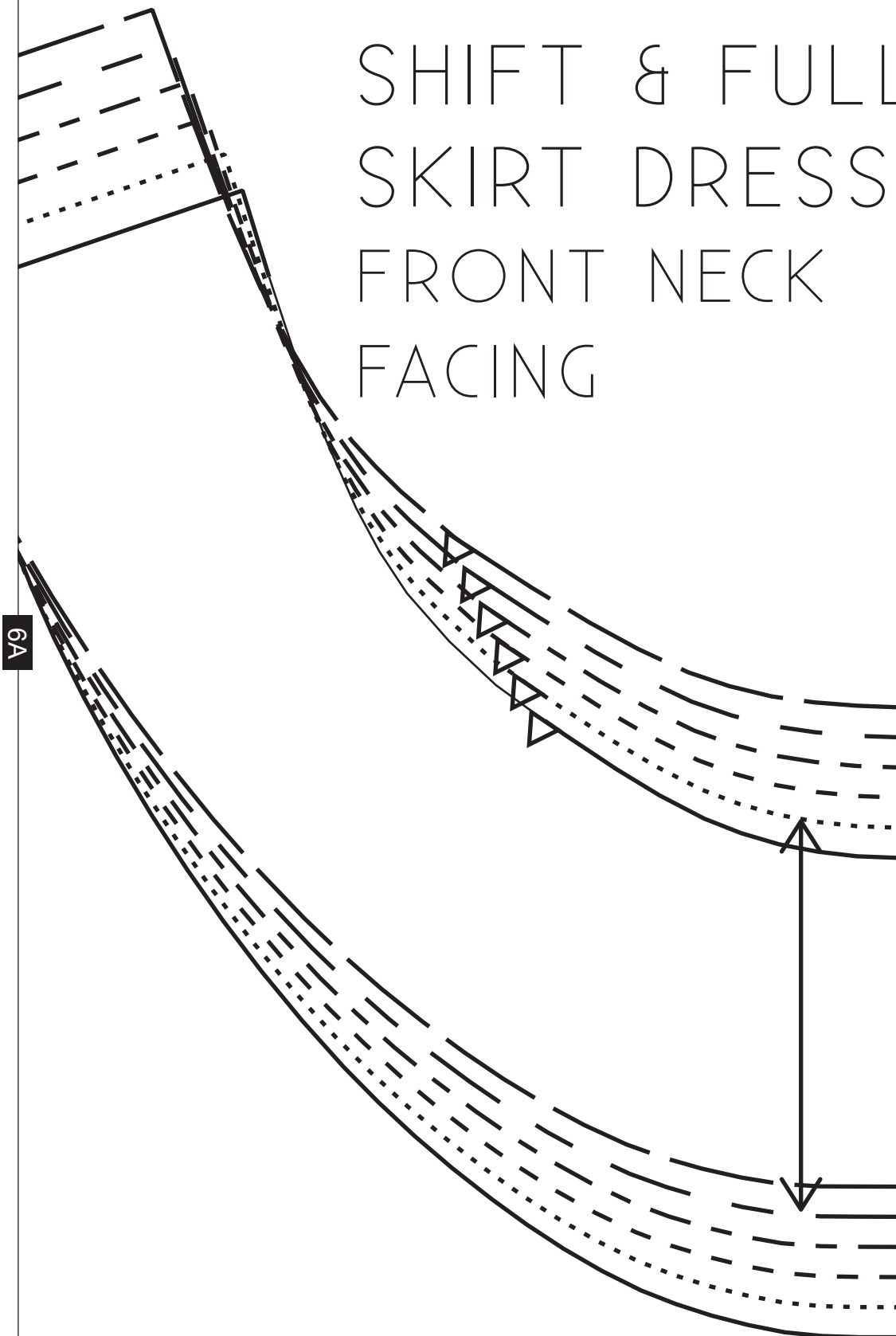


5A

6A

6B

# SHIFT & FULL SKIRT DRESS FRONT NECK FACING



ZIP POSITION



1B

810 12 14 16 18

LENGTHEN OR SHORTEN FROM HERE

8A

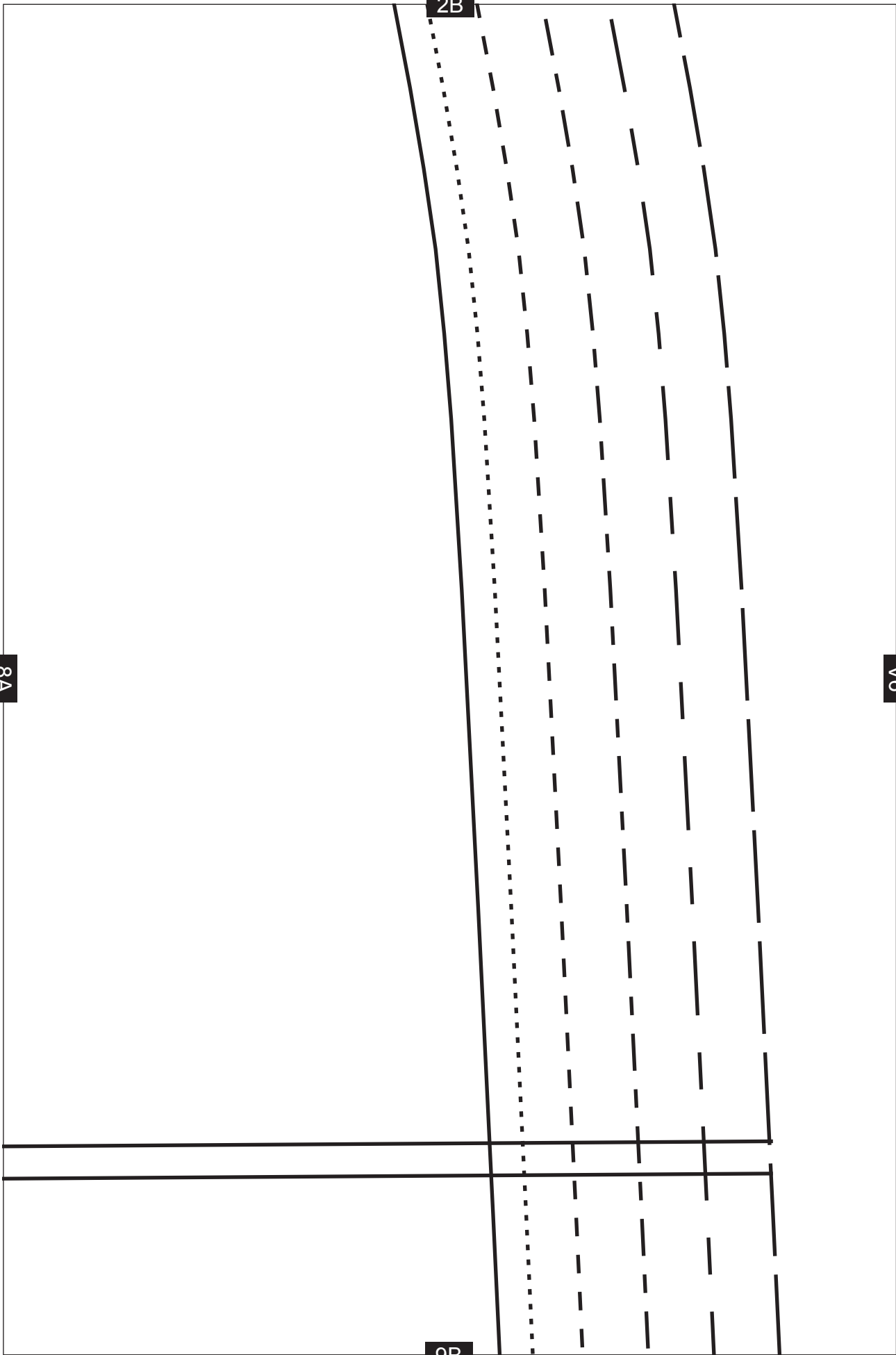
8B

8A

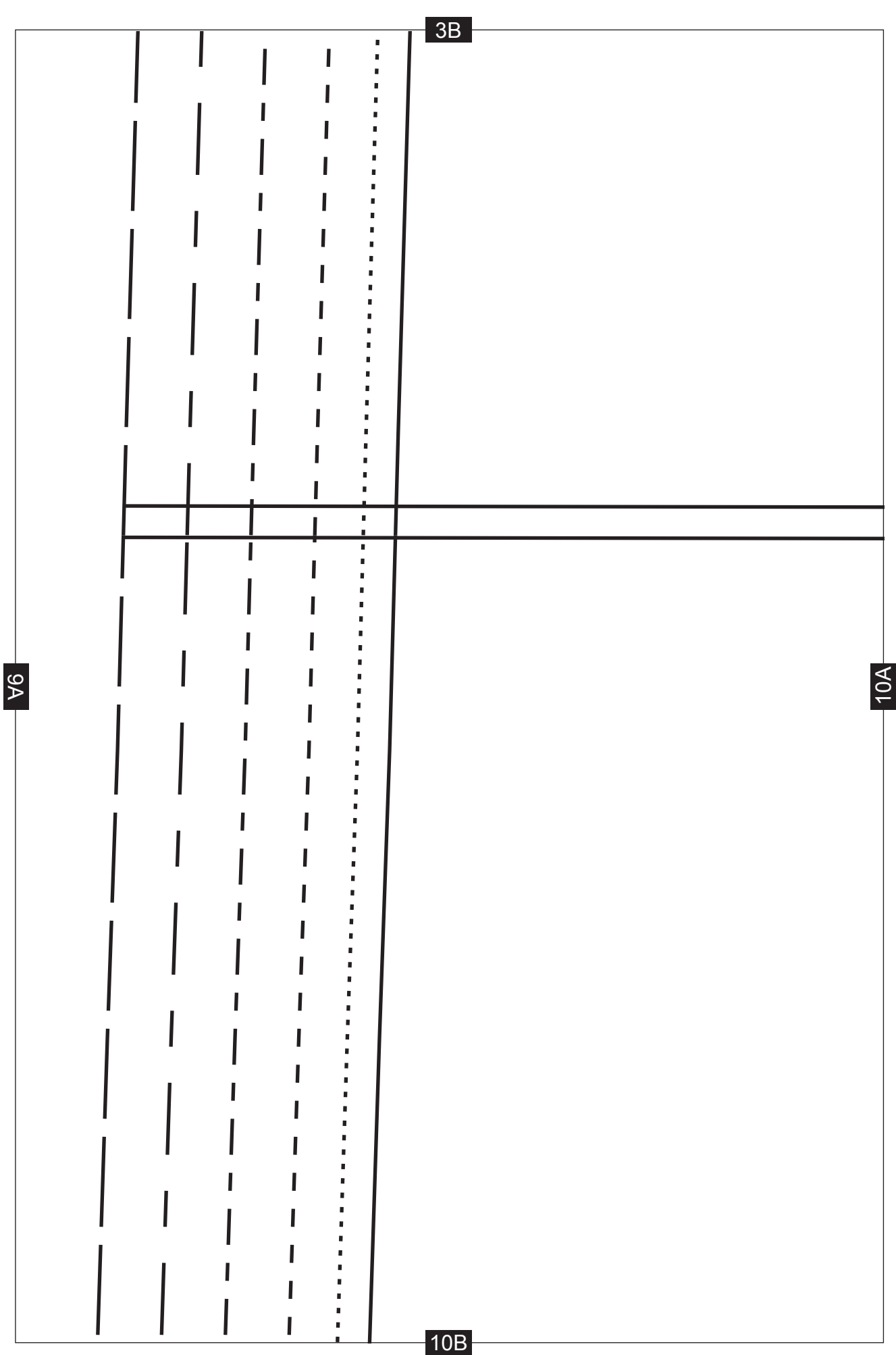
9A

2B

9B







4B

LENGTHEN OR SHORTEN FROM HERE

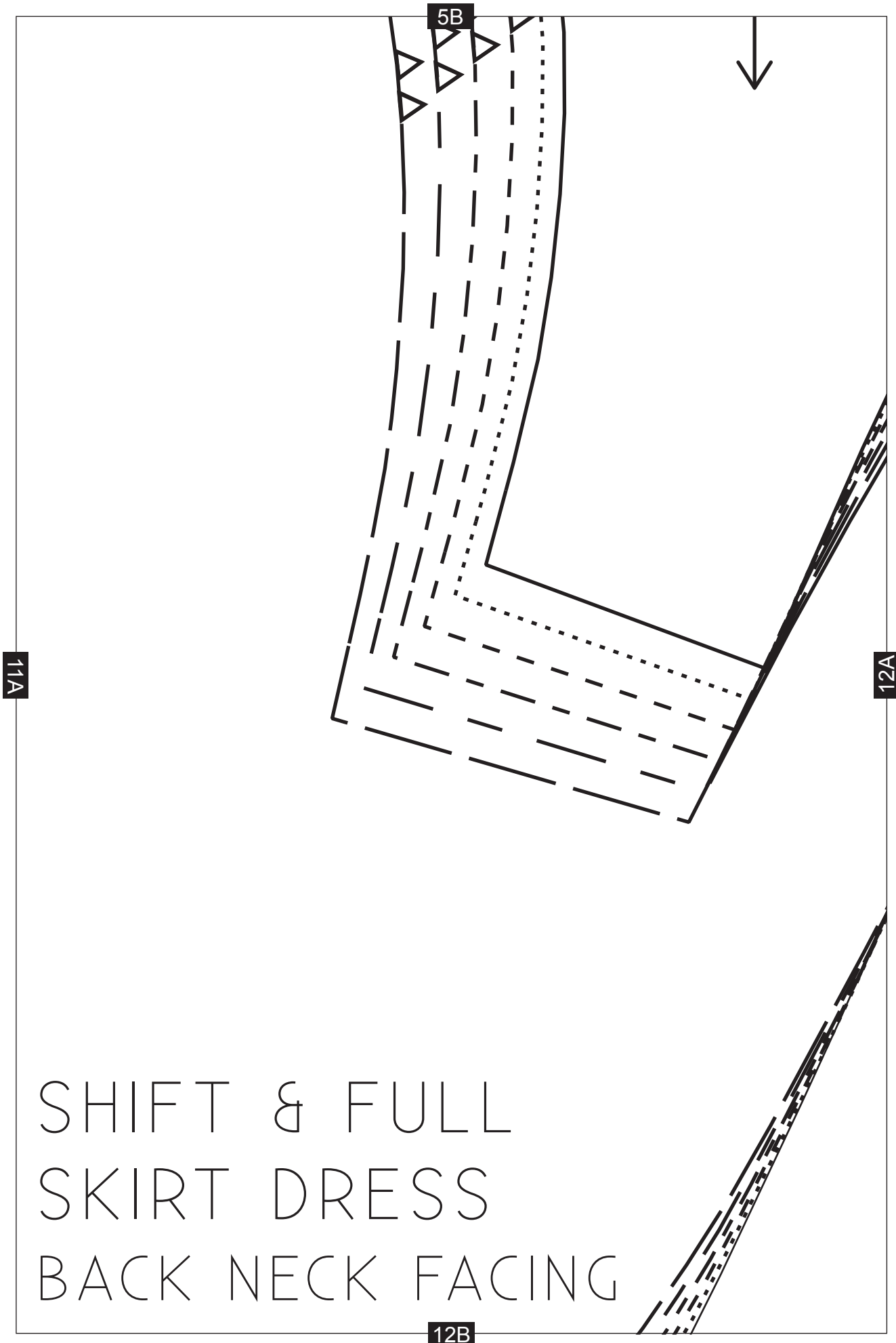
10A

11A

11B

PLACE ON FOLD



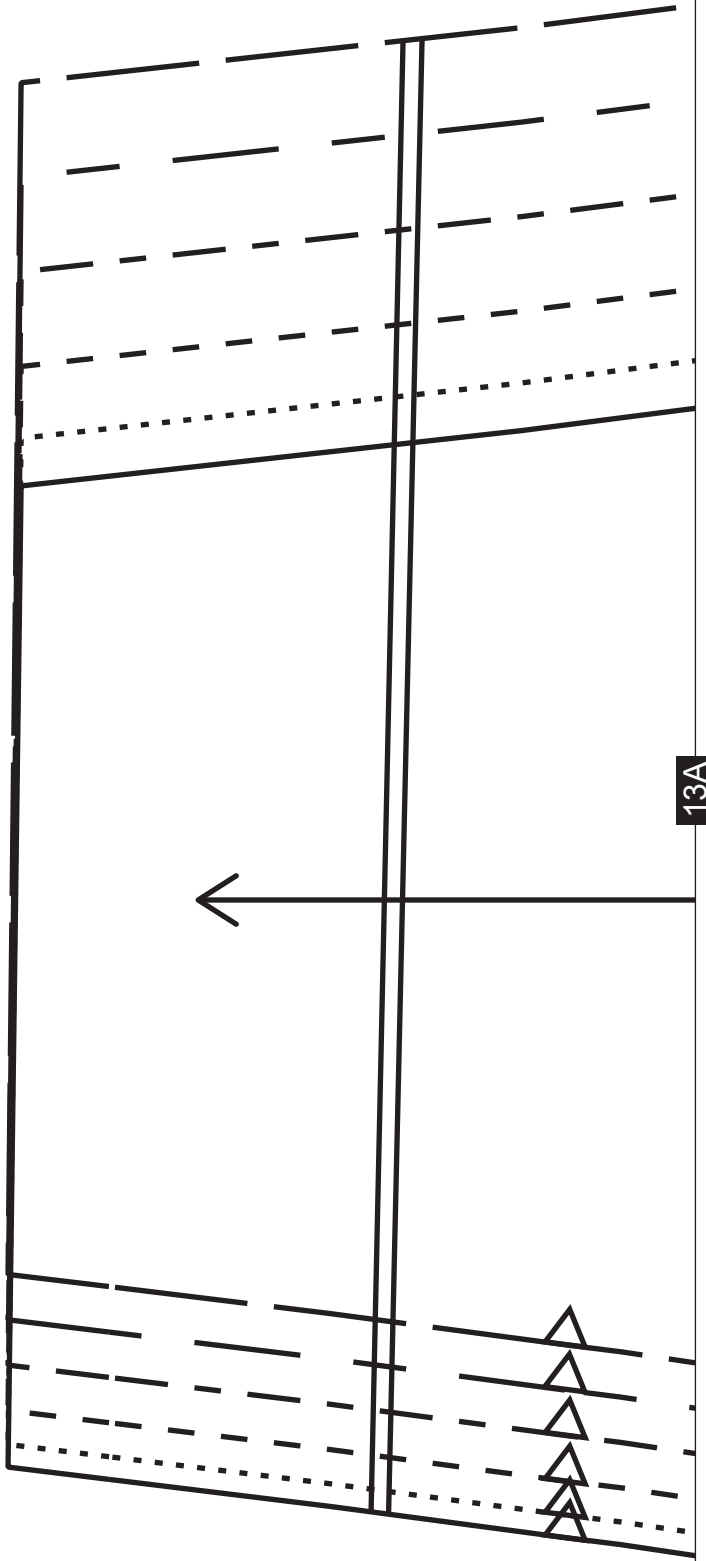
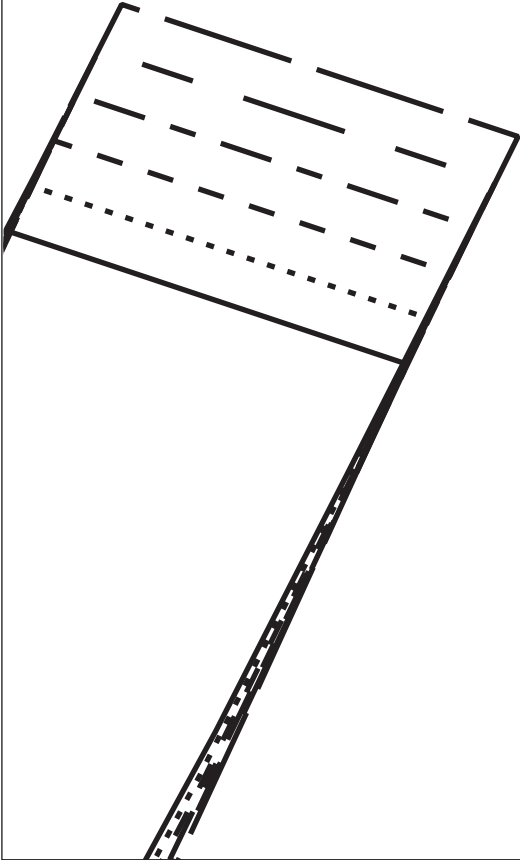
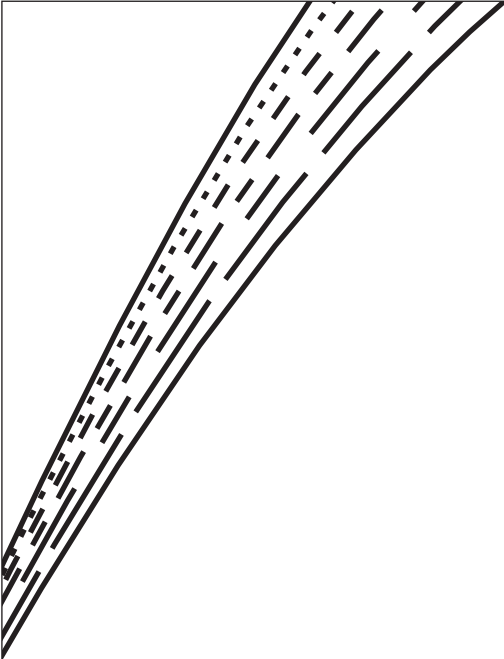


6B

12A

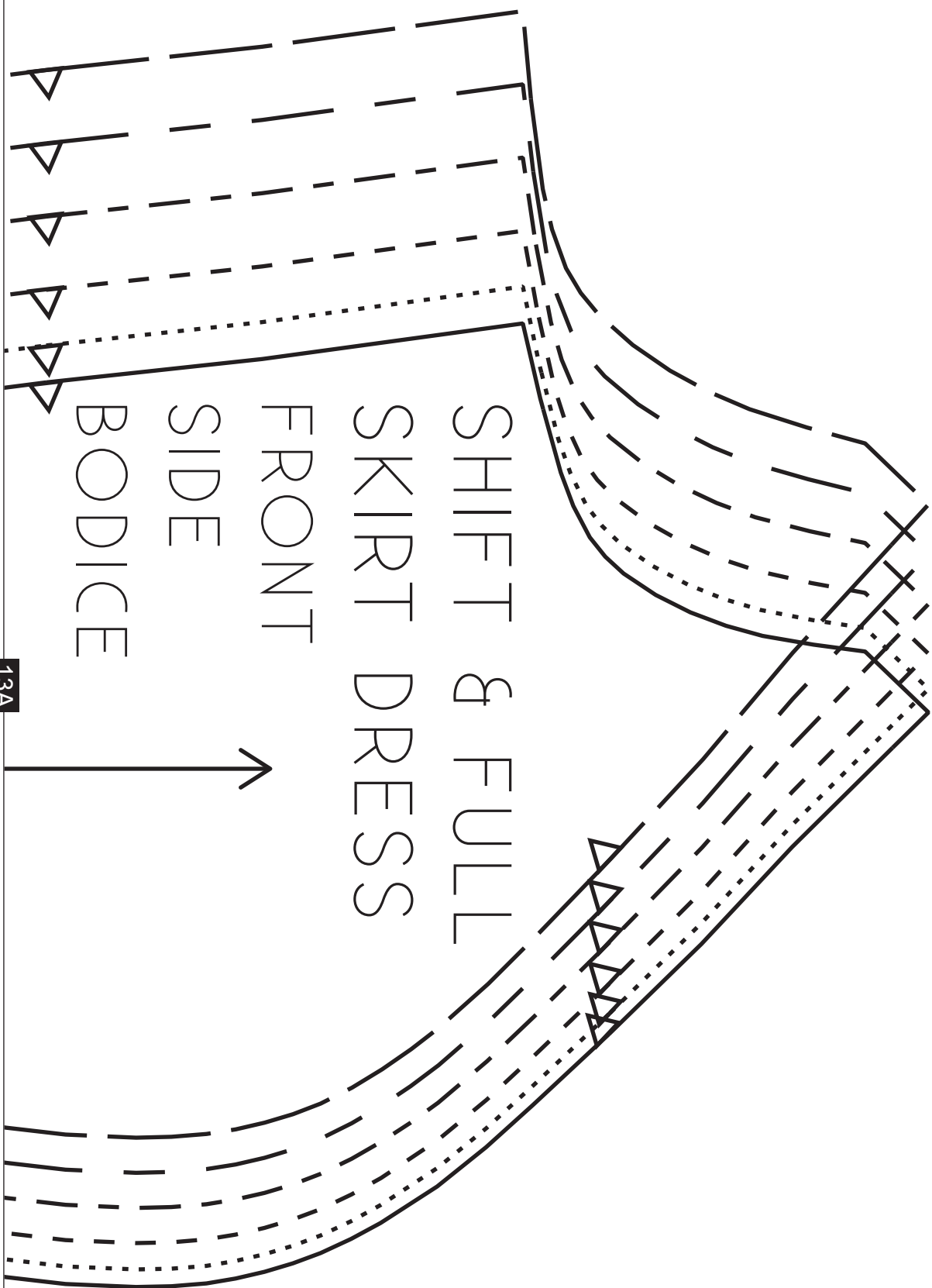
13A

13B





7B



13A

14B

8B

# SHIFT DRESS BACK SKIRT



15A

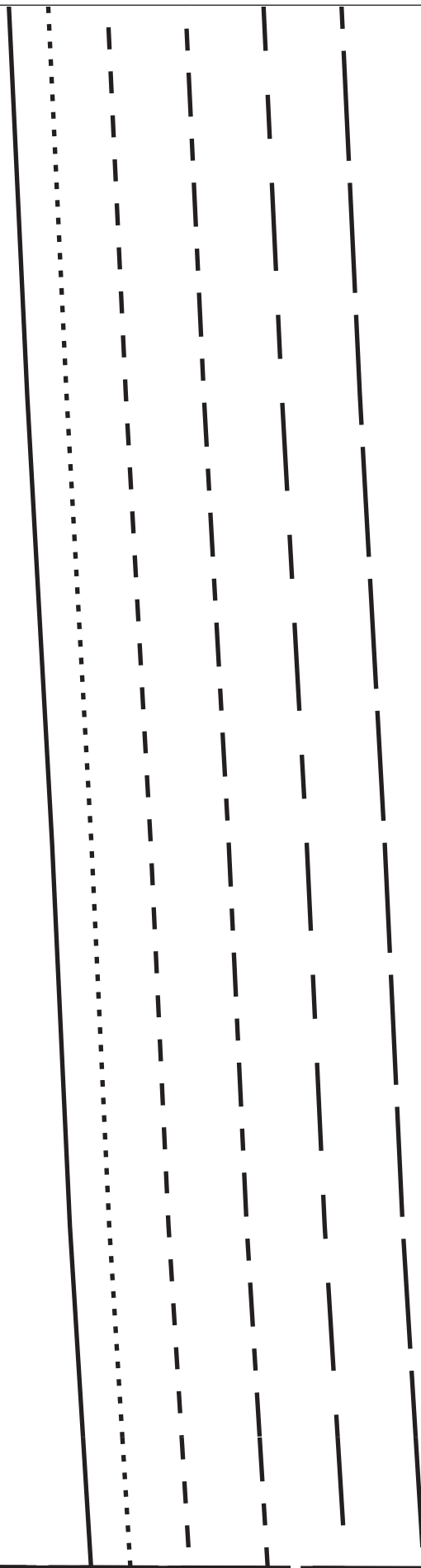
15B

15A

9B

16A

16B

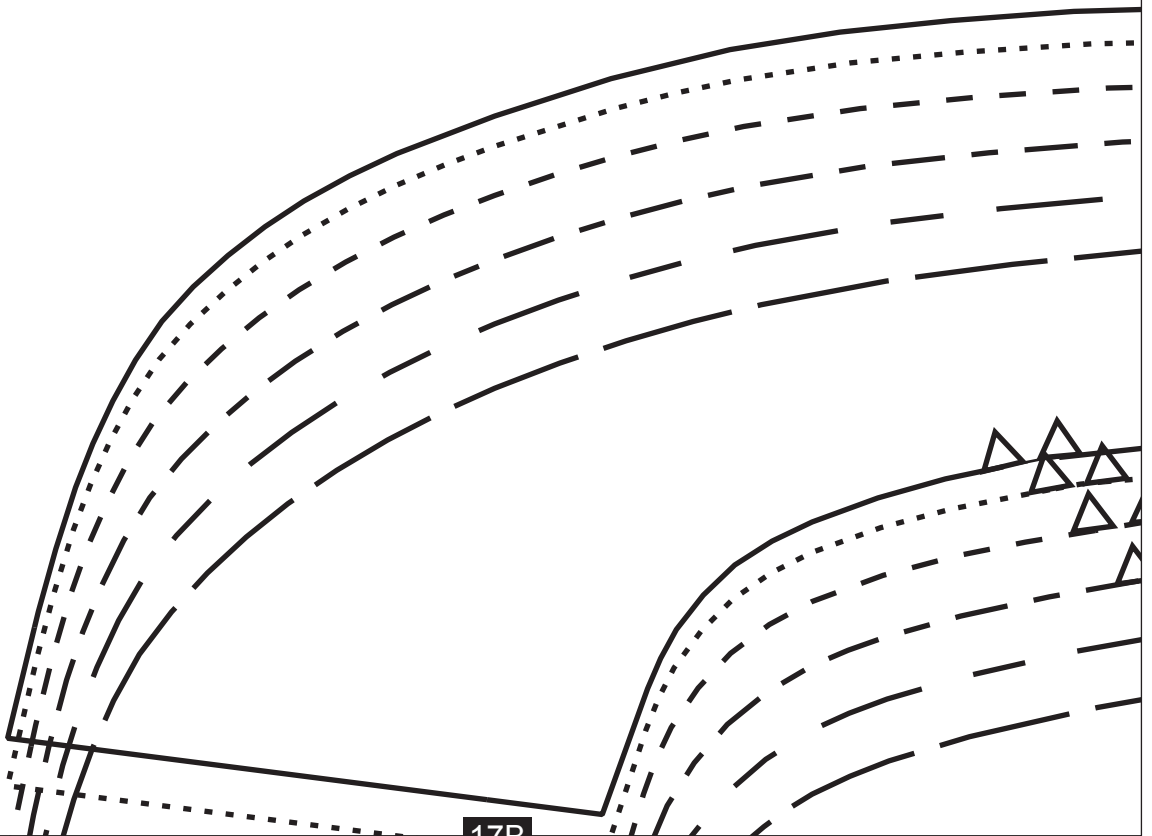
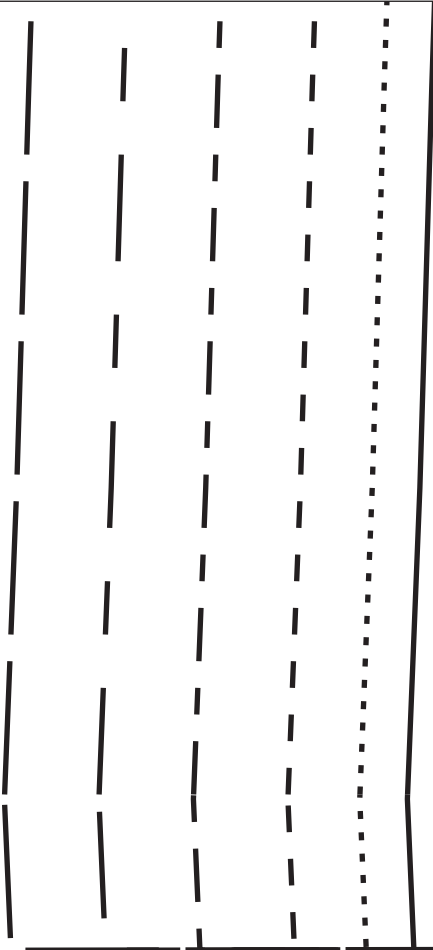


10B

16A

17A

17B





11B



# SHIFT DRESS FRONT SKIRT

17A

18A



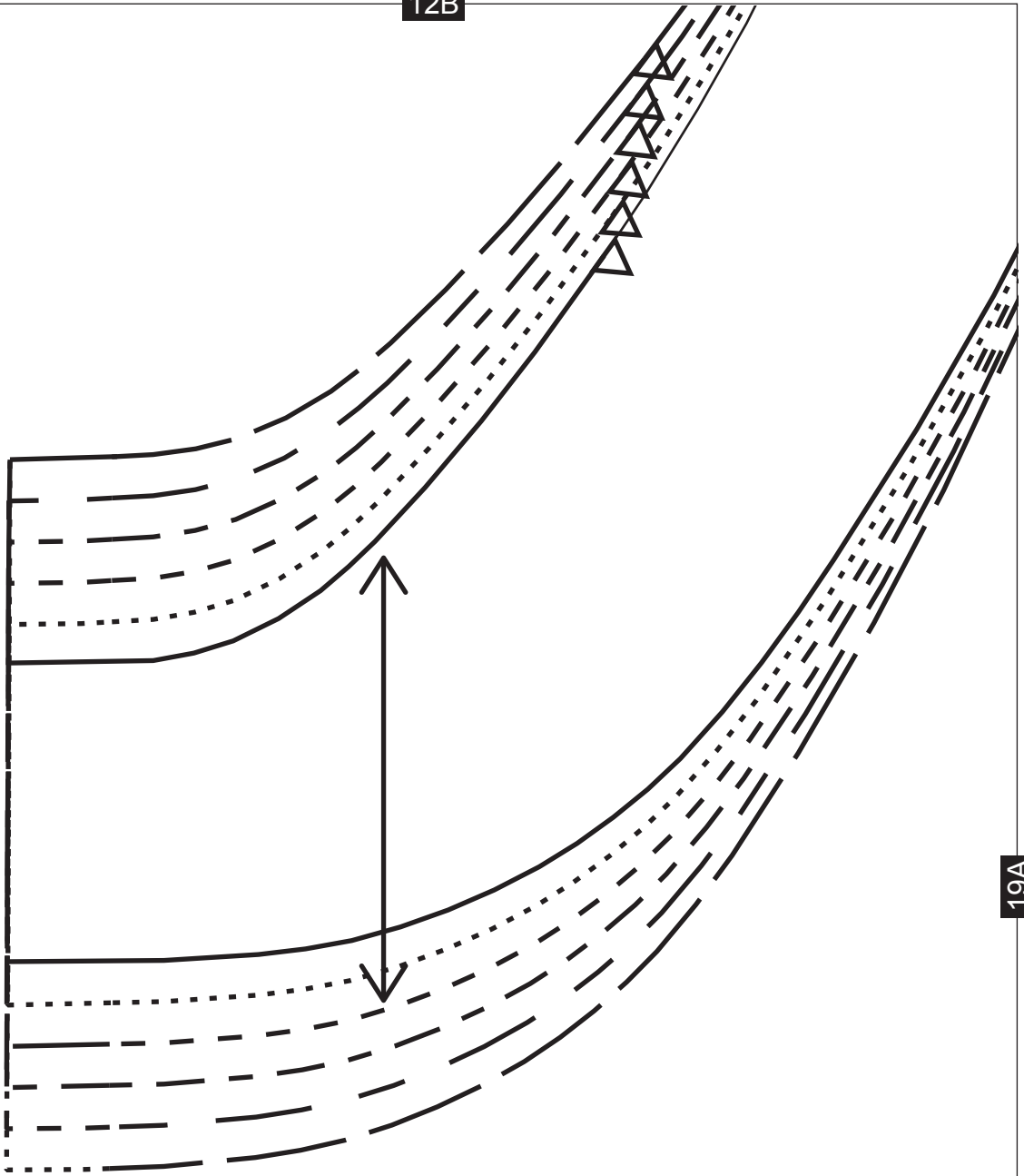
18B

12B

18A

19A

19B

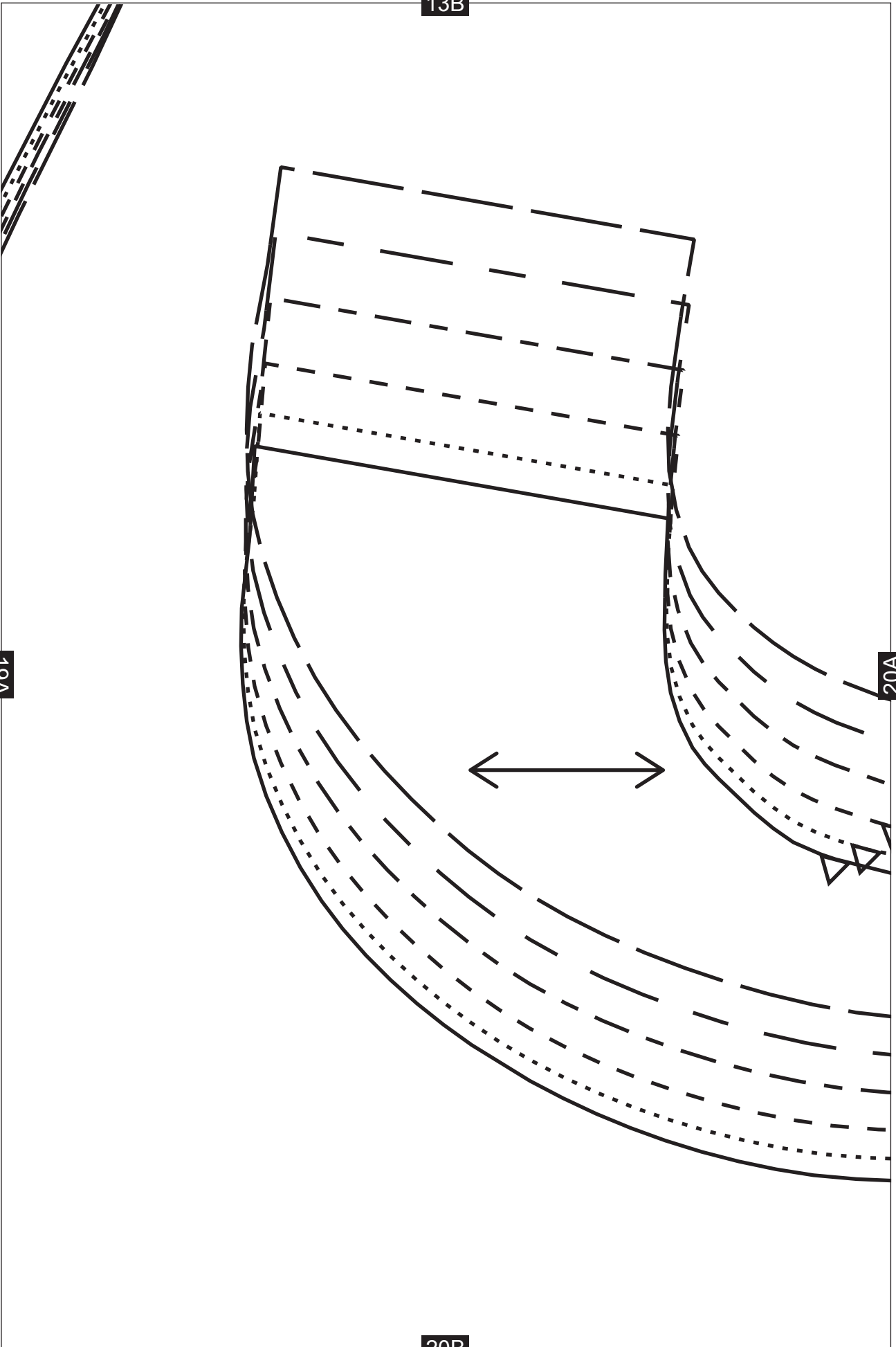


13B

19A

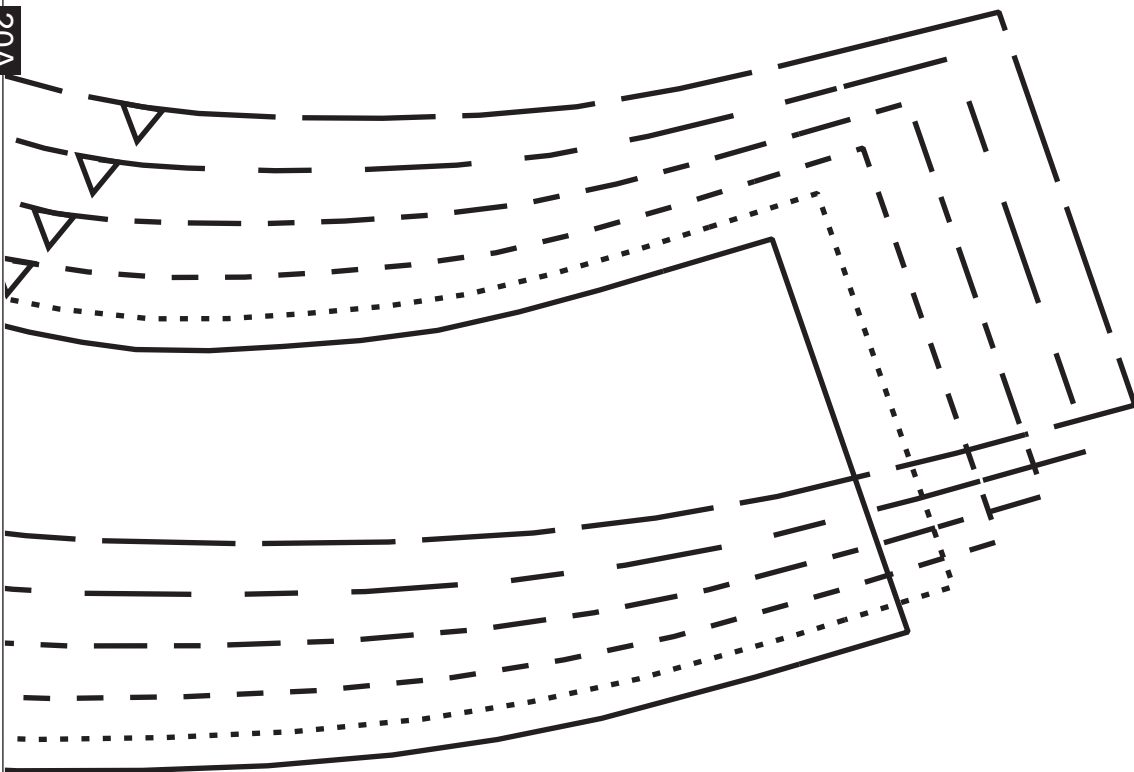
20A

20B



SHIFT & FULL  
SKIRT DRESS  
FRONT ARMHOLE  
FACING

20A





15B

22A



22B

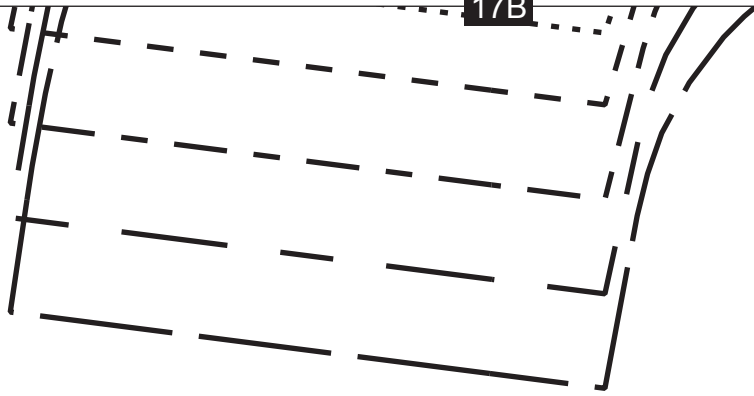
16B

22A

23A

23B

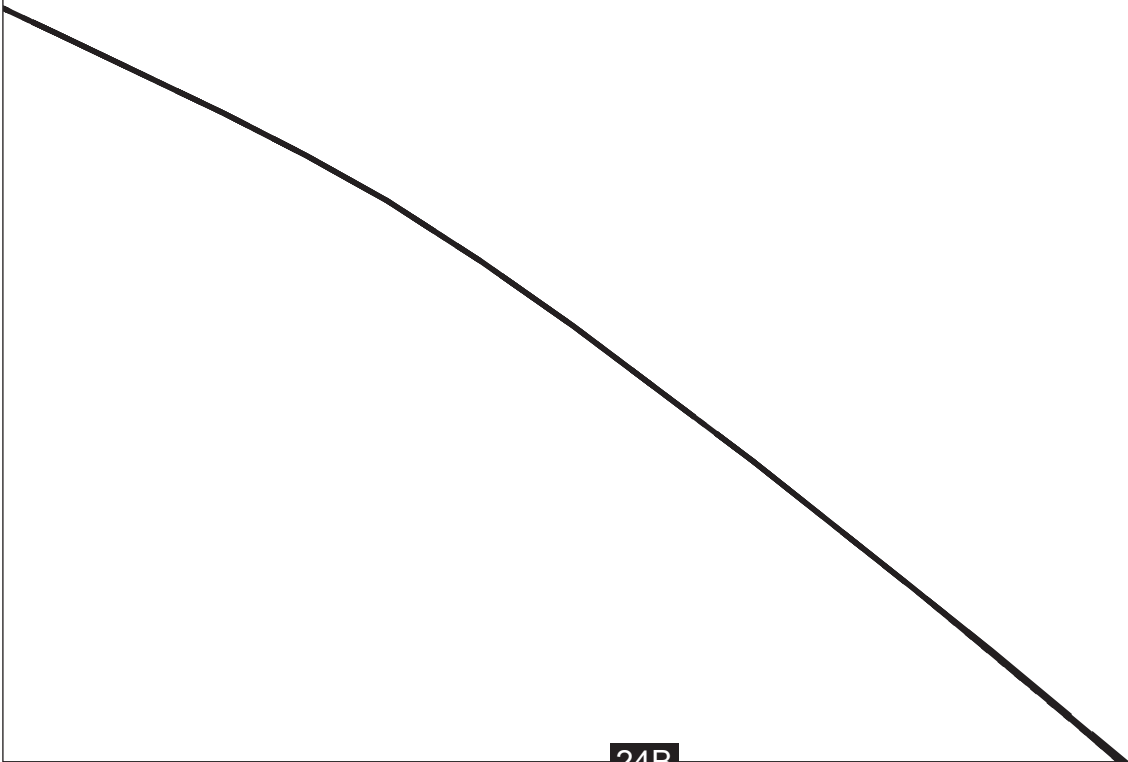
17B



SHIFT & FULL  
SKIRT DRESS  
BACK ARMHOLE  
FACING

23A

24A



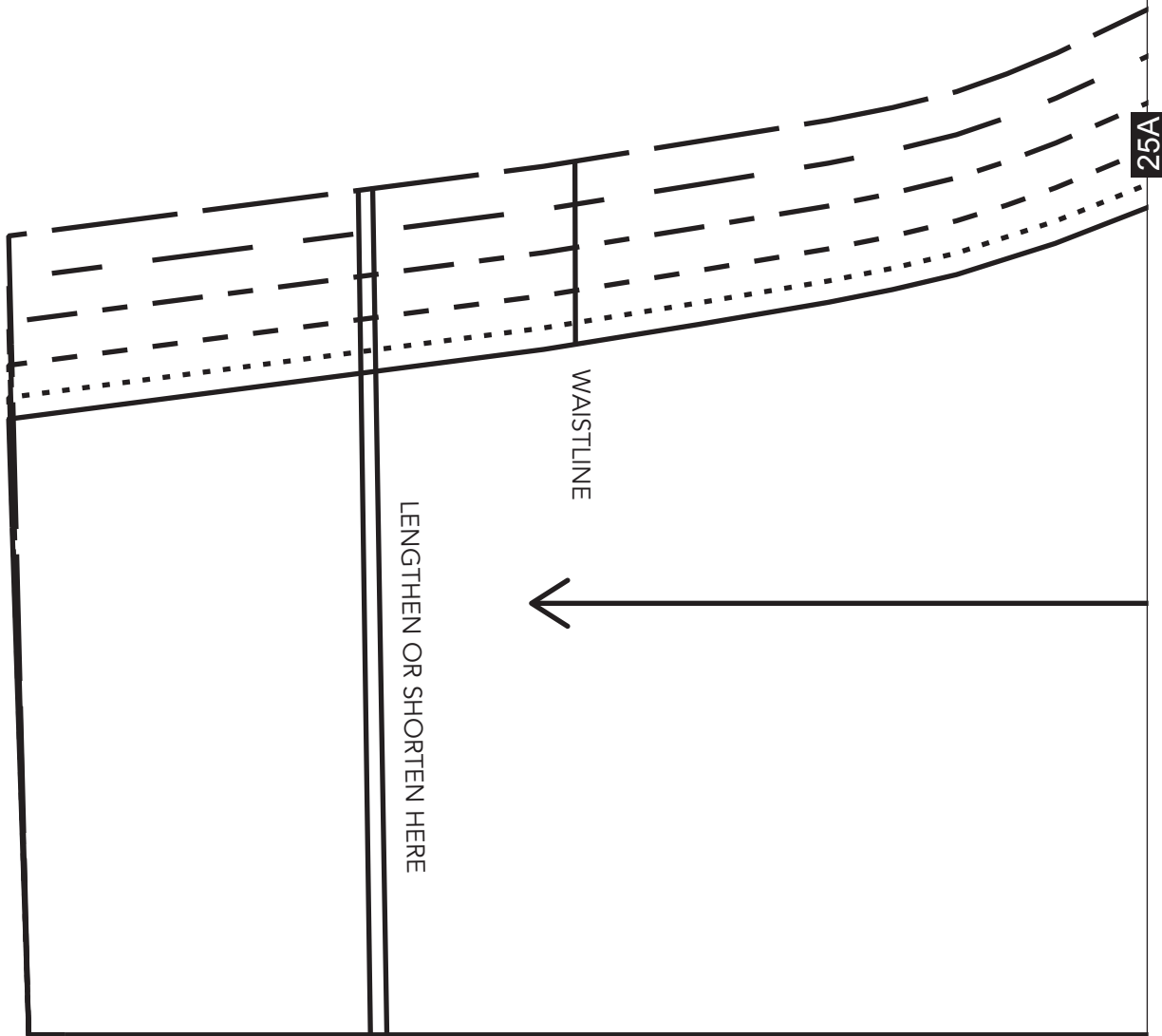
24B

18B

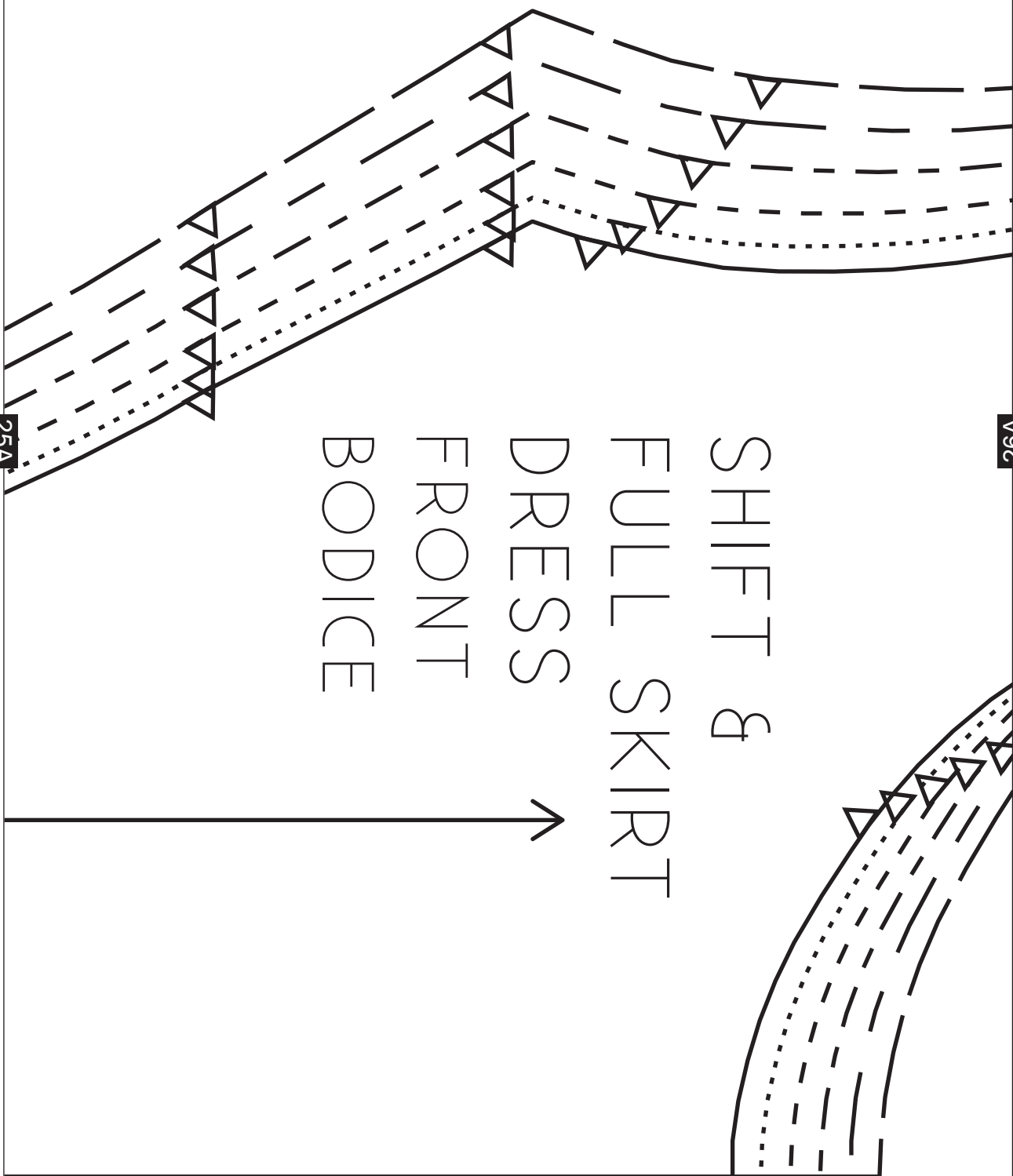
24A

25A

25B



SHIFT B  
FULL SKIRT  
DRESS  
FRONT  
BODICE

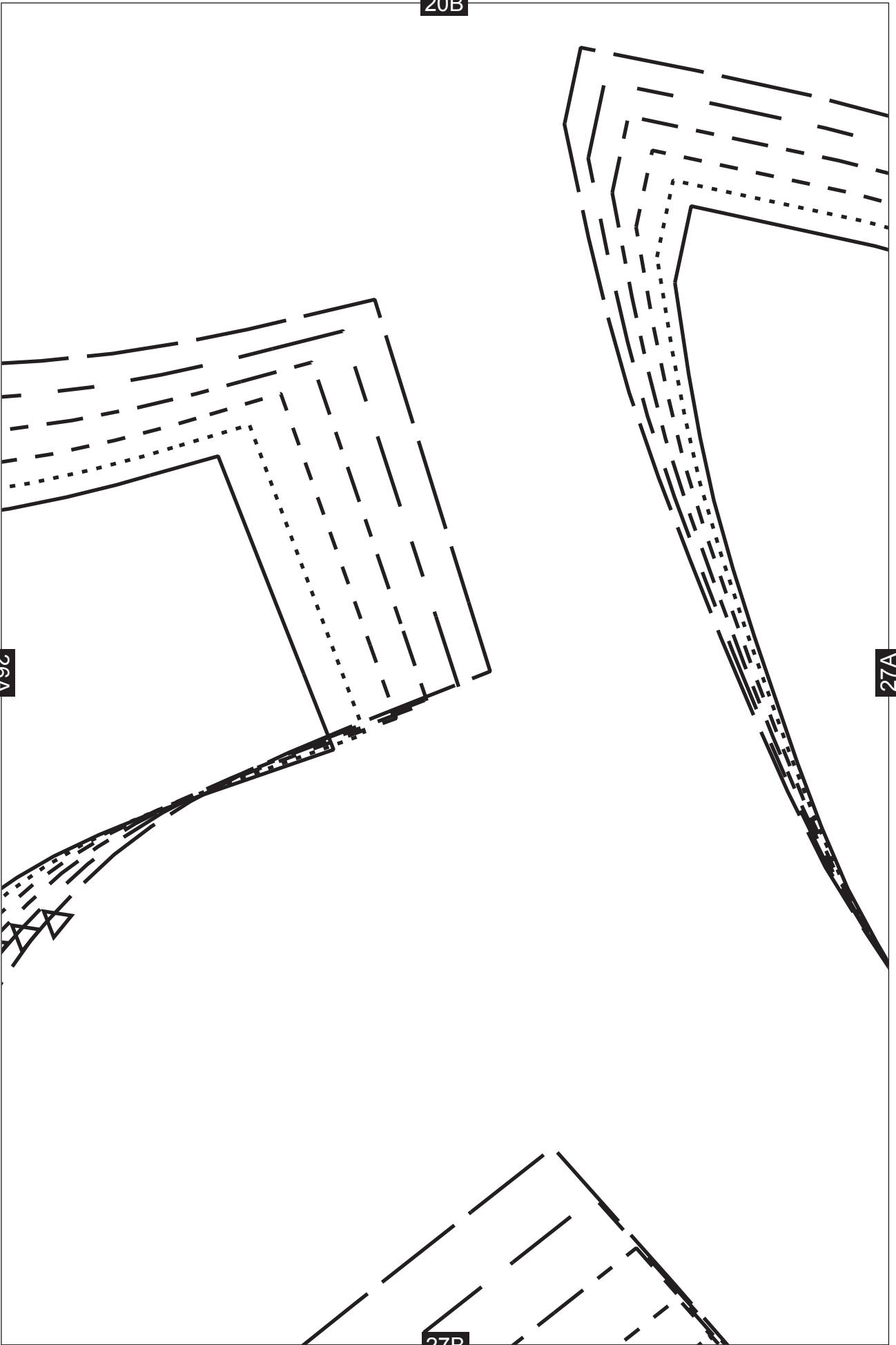


20B

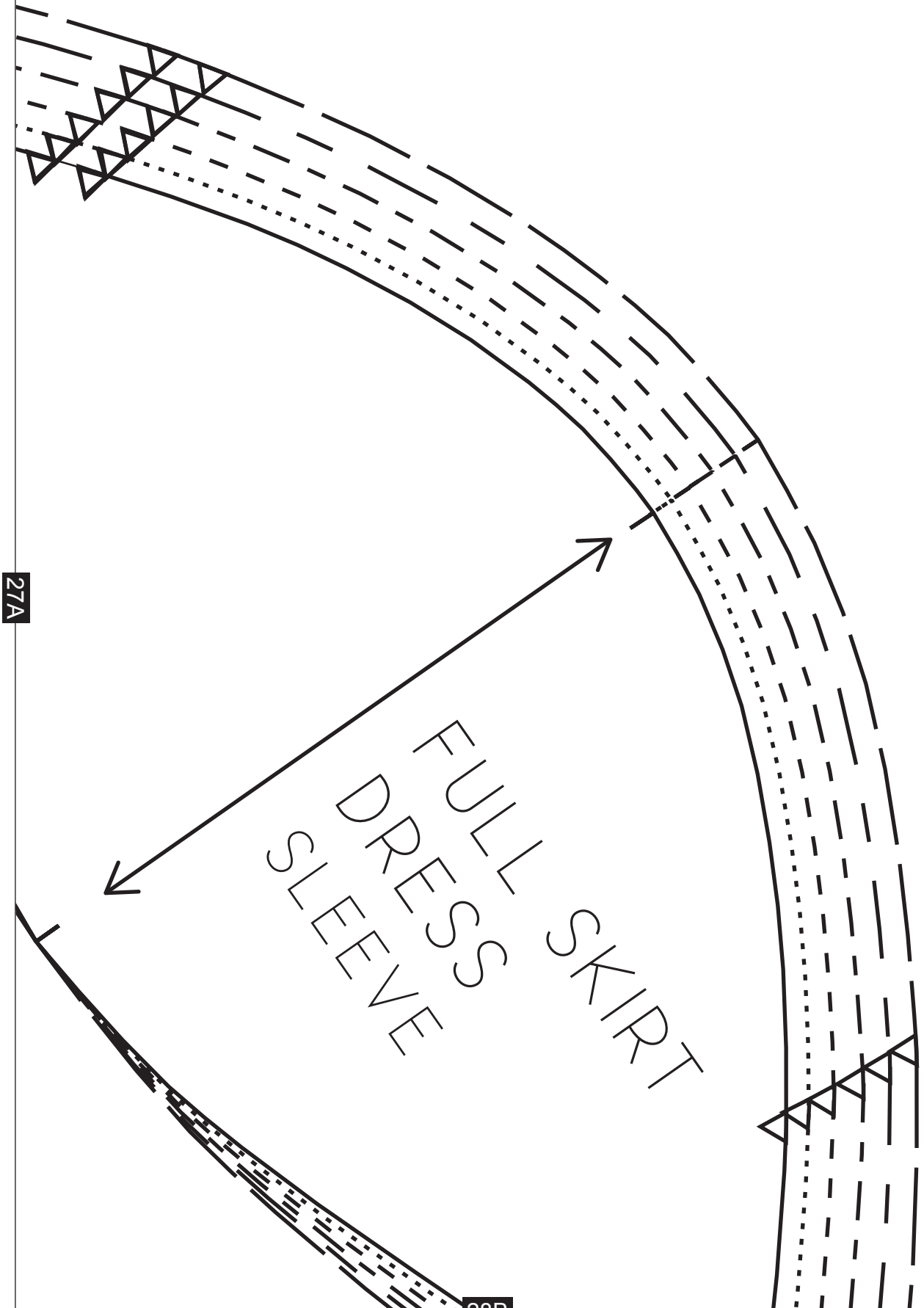
26A

27A

27B



21B



27A

28B

22B

STRAIGHT GRAIN

29B

PLACE ON FOLD





23B

30A

FULL SKIRT DRESS  
FRONT SKIRT

29A

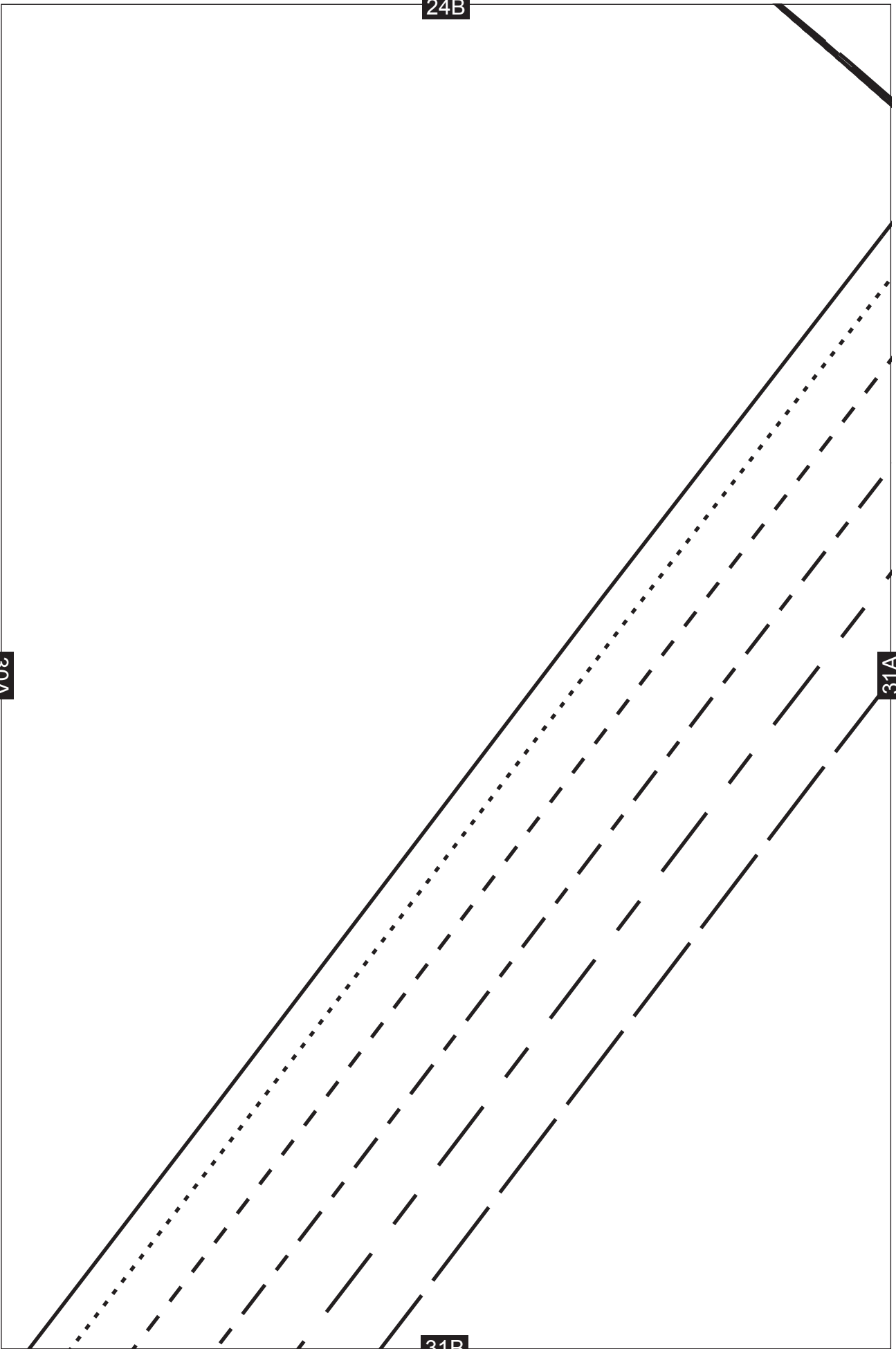
30B

24B

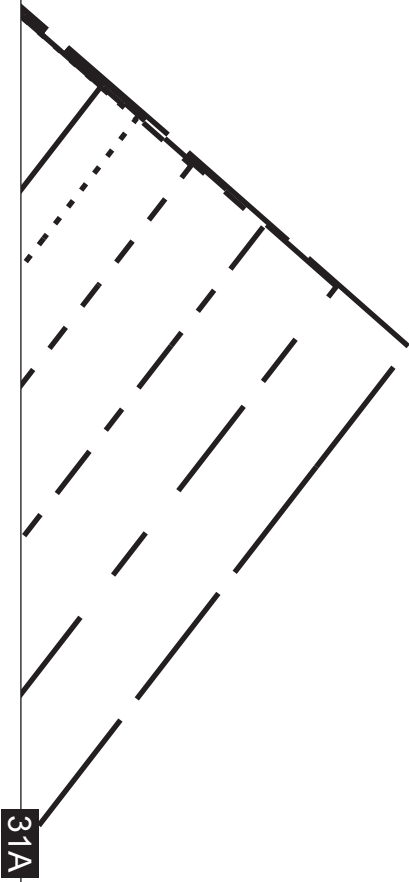
30A

31A

31B

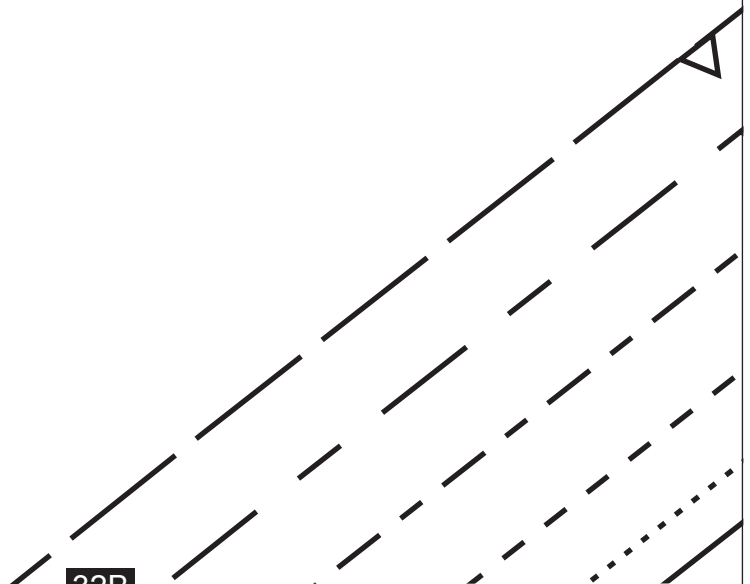


25B



31A

32A



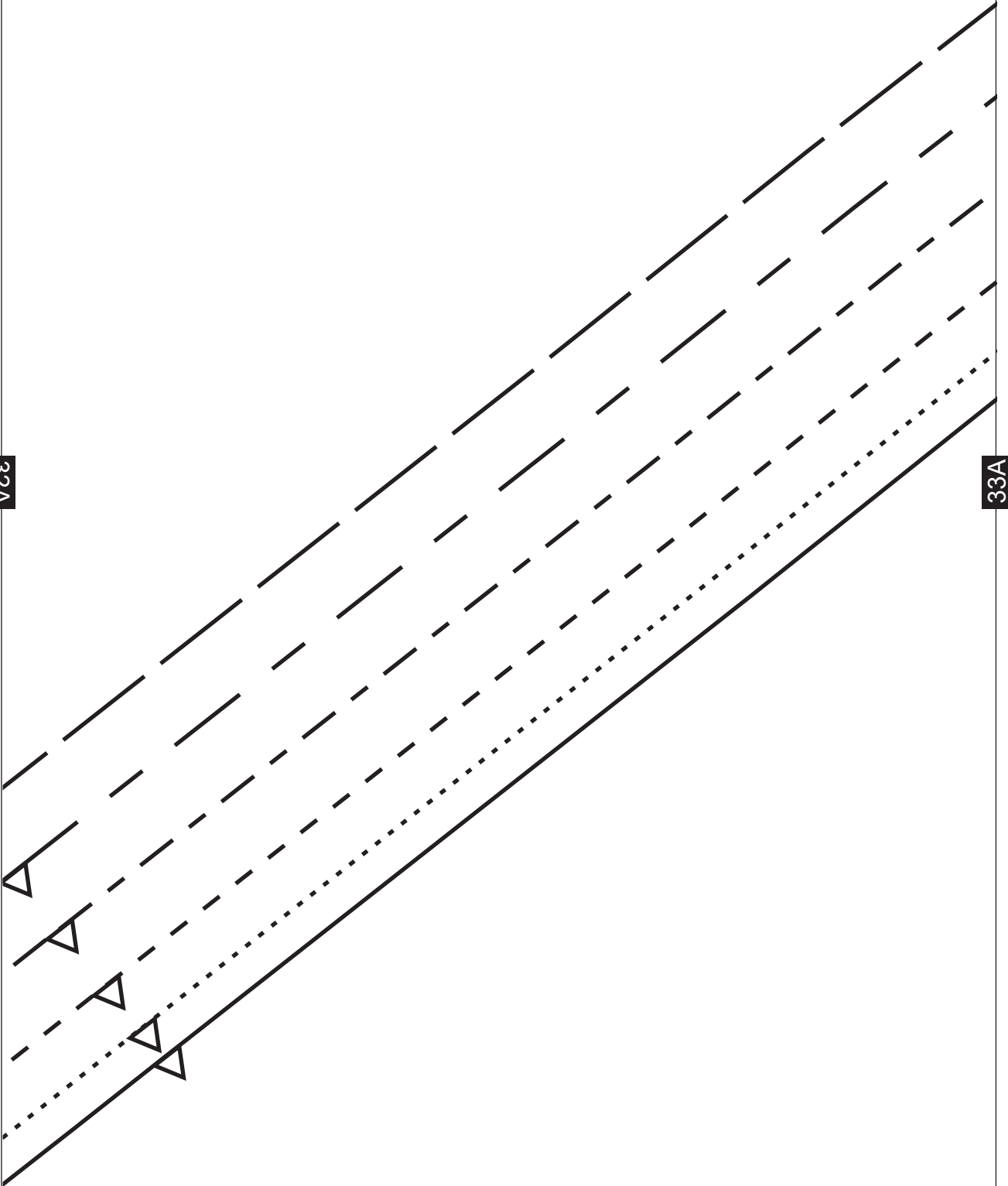
32B

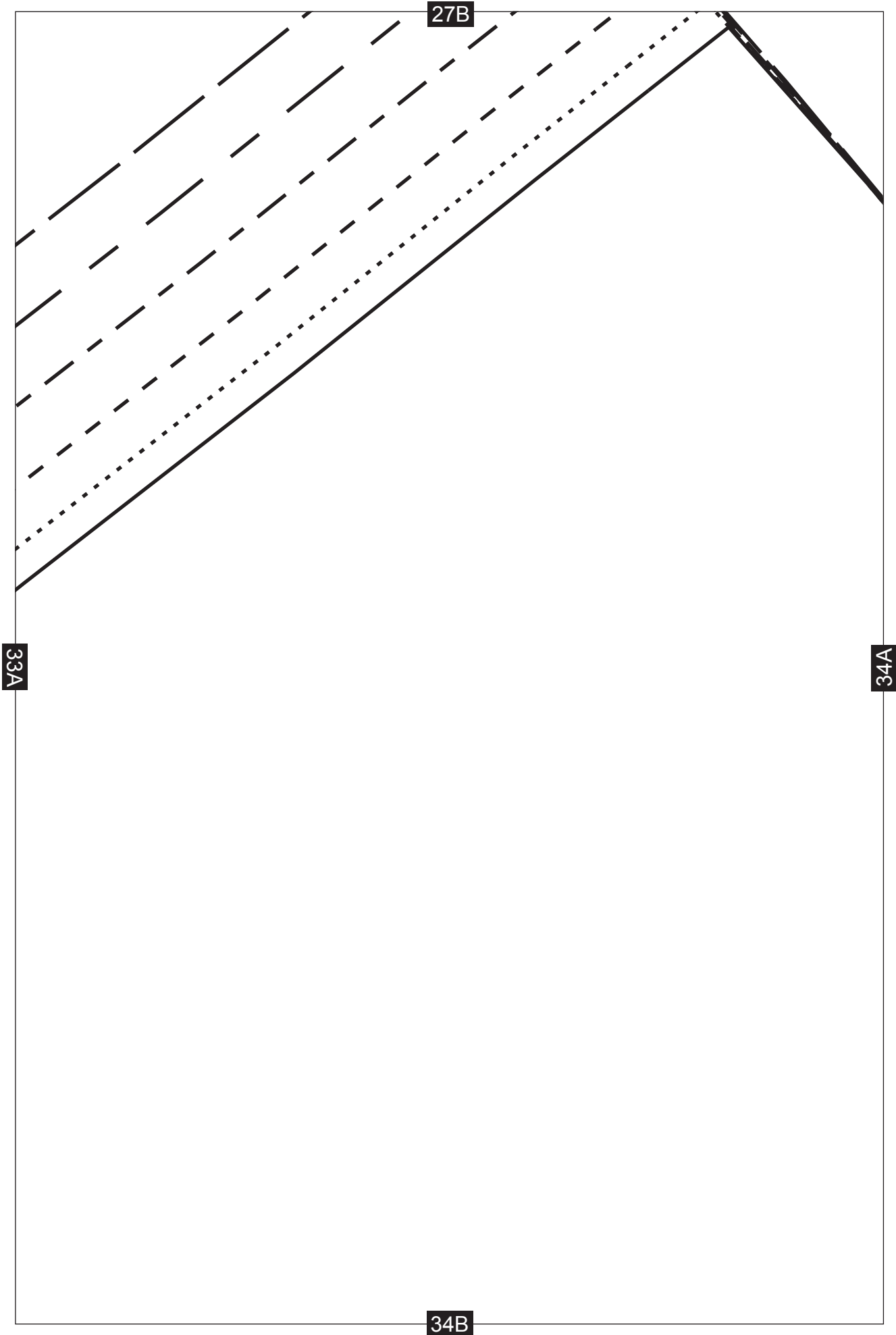
26B

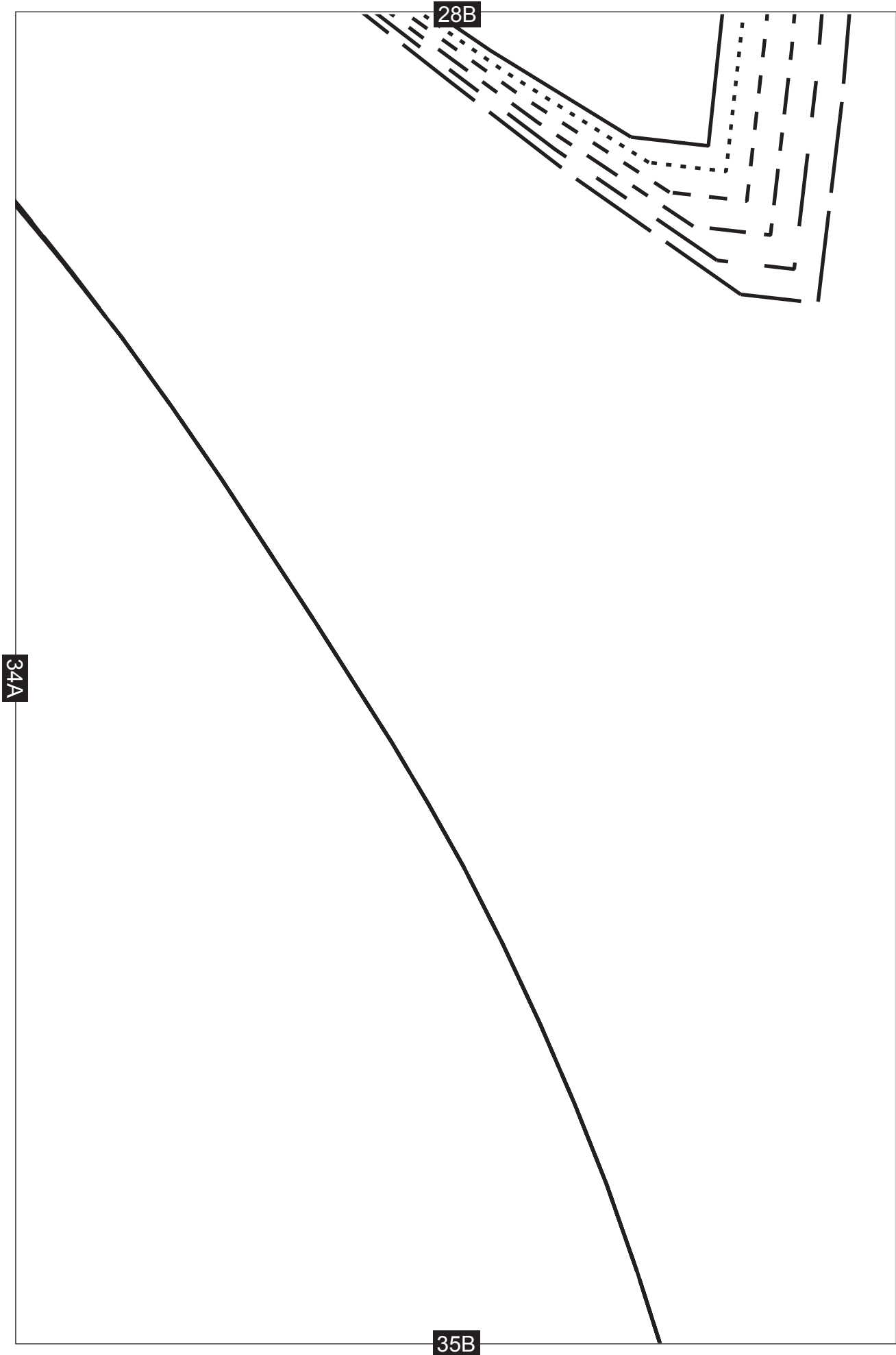
32A

33A

33B



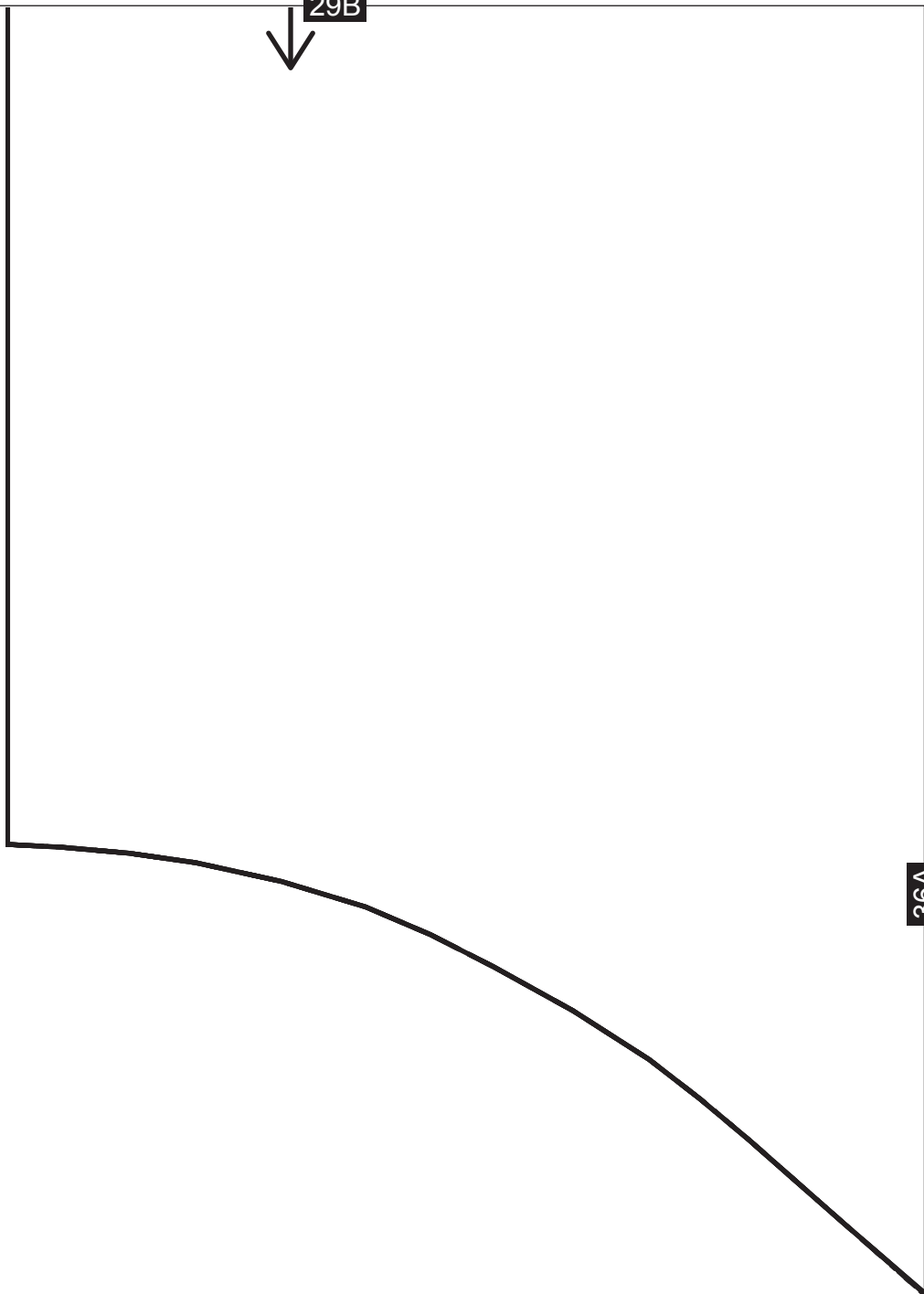




29B



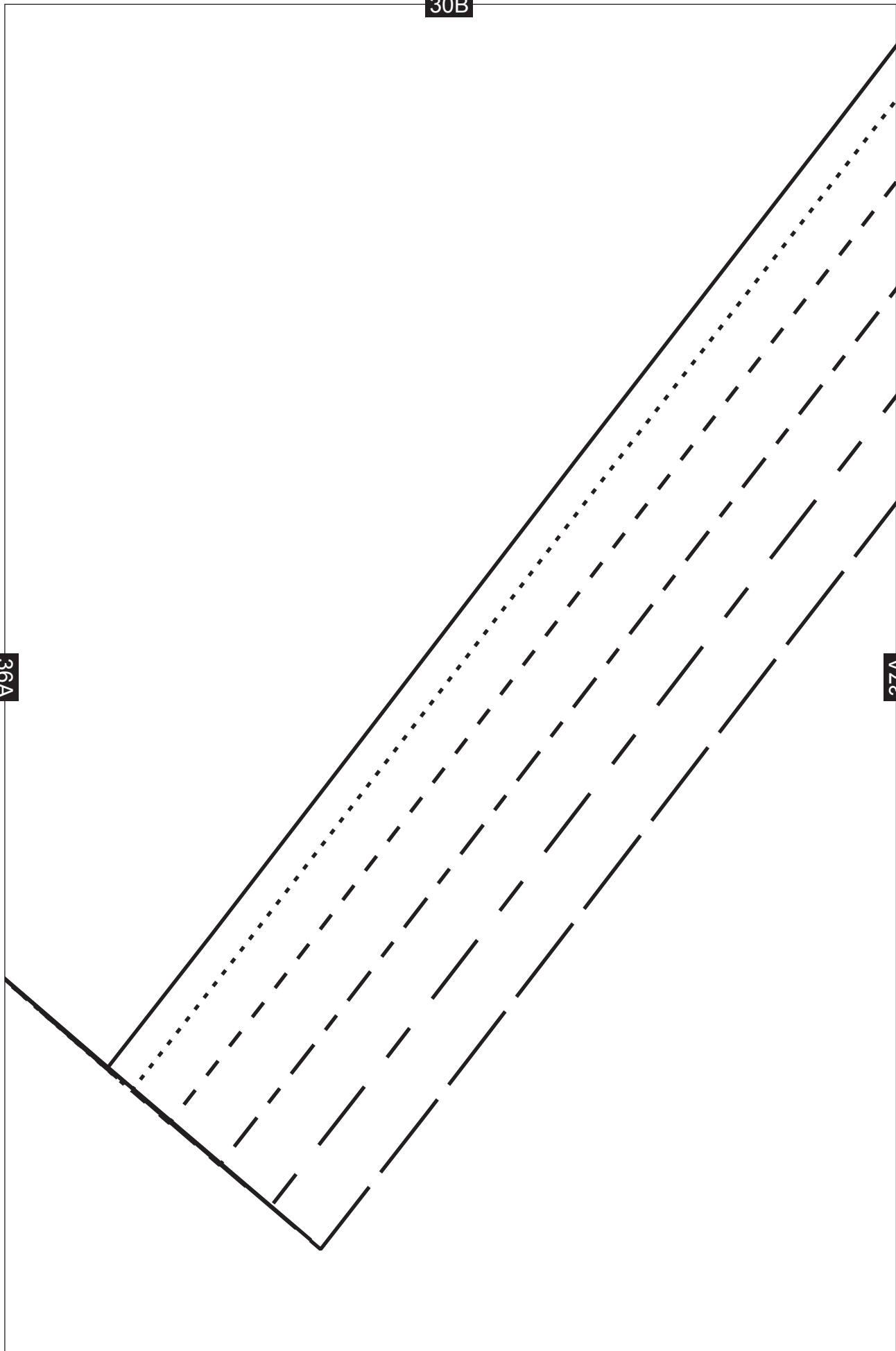
36A



30B

36A

37A





31B

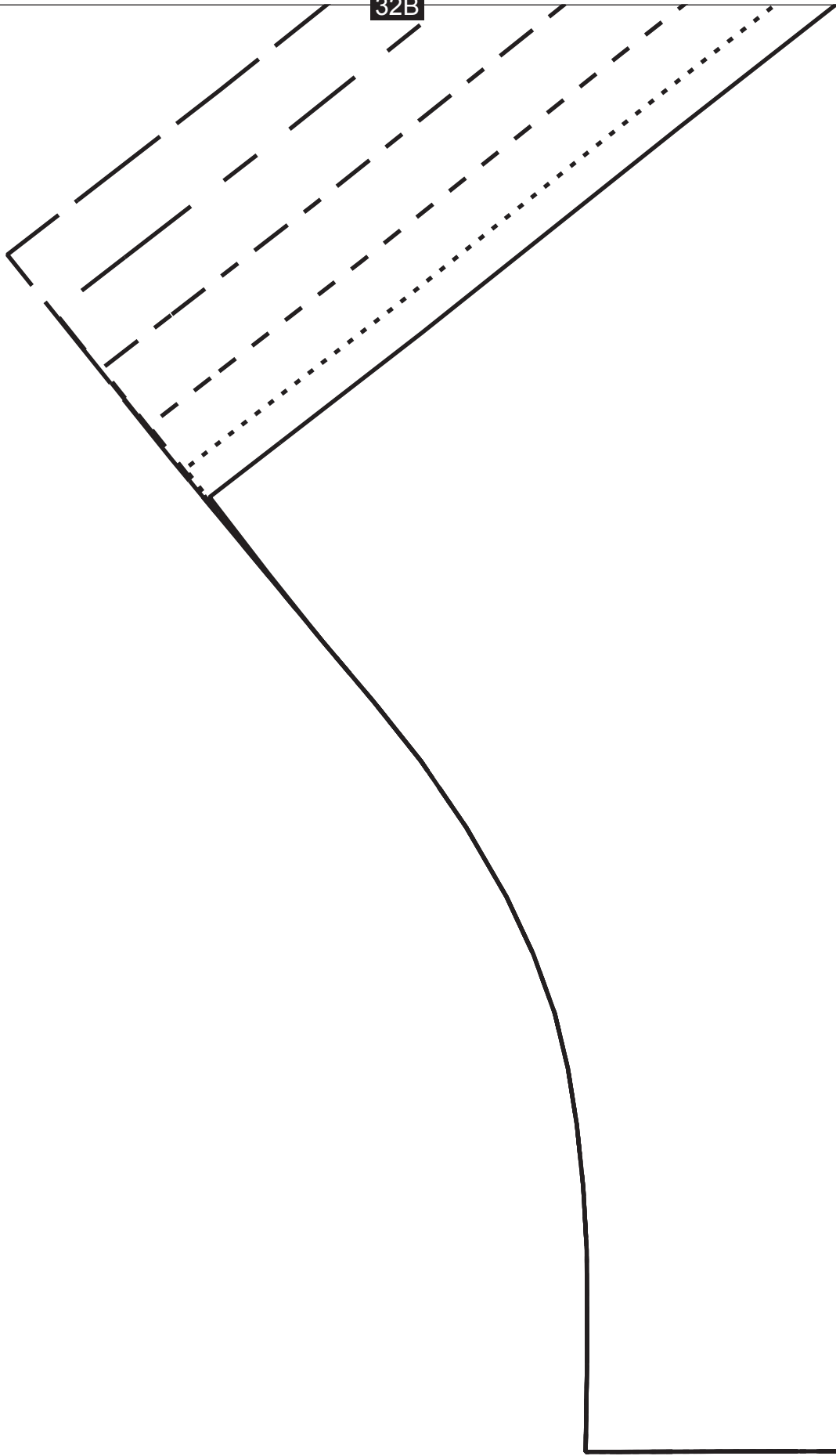
37A

38A

38A

39A

32B



33B

39A

40A



ZIP POSITION

O

40A

FULL SKIRT DRESS  
BACK SKIRT

34B

41A

35B

41A

