

# THE SLOUCHY SHIRT

---

by Anne Weaver @ Craft Gossip  
<http://sewing.craftgossip.com>  
<http://lualoo.wordpress.com>

# THE SLOUCHY SHIRT

**Fabric requirements:** 1 yard of stretch knit fabric and 1.5 yards fold over elastic.

**Seam allowance:** 3/8"

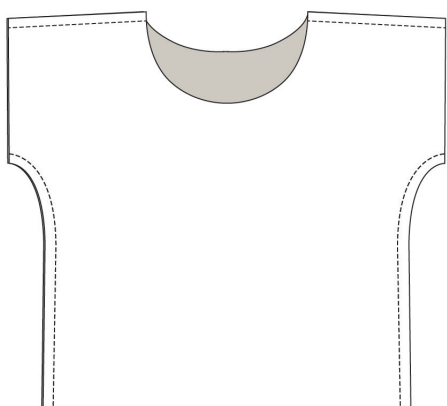
**Pattern assembly:** Print all pages of the pattern with no page scaling. Measure the 1" reference square to ensure that your pattern has printed to the correct scale. Tape the pattern pieces together, using the numbered and lettered notches to match the pieces.

**Size:** Women's size small (32-34" bust, 39" hip)

right  
side of  
fabric

wrong  
side of  
fabric

## STEP 1



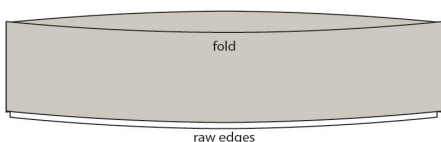
With right sides together, sew front to back at shoulders and sides.

## STEP 2



With right sides together, sew waistband front to waistband back at sides to create a circle of fabric.

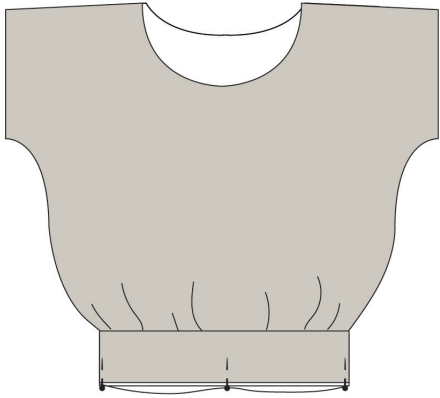
## STEP 3



Fold the waistband in half lengthwise, with wrong sides together.

## STEP 4

---

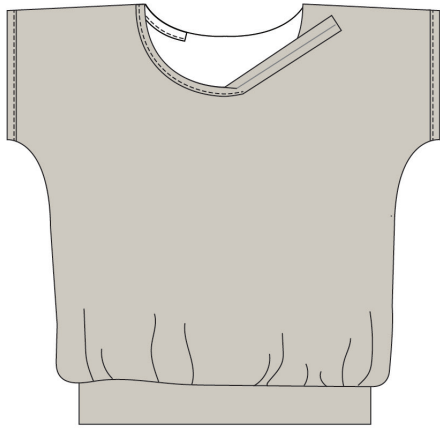


With right sides together and raw edges aligned, pin the waistband to the shirt bottom at side seams and at halfway points across front and back. (The waistband circumference is smaller than the shirt circumference.)

Sew the waistband to the bottom of the shirt, stretching to fit.

## STEP 5

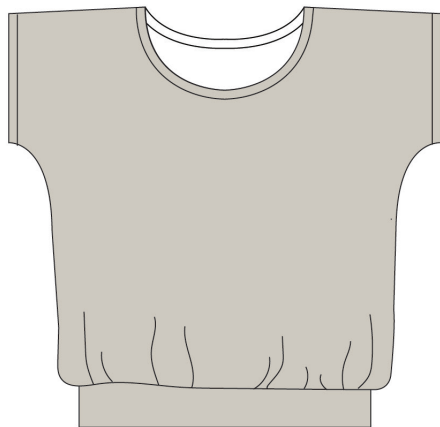
---



Bind the neck and arm holes with fold over elastic, wrapping the elastic around the raw edge and stitching close to the edge of the elastic with a zig zag or stretch stitch.

## SUCCESS!

---

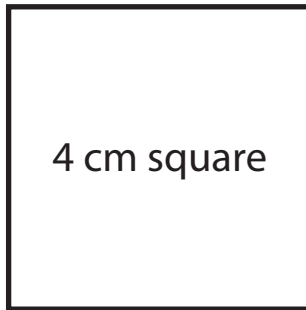
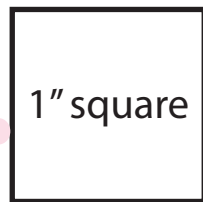


Your Slouchy Shirt is complete. Pat yourself on the back for a job well done.

# THE SLOUCHY SHIRT

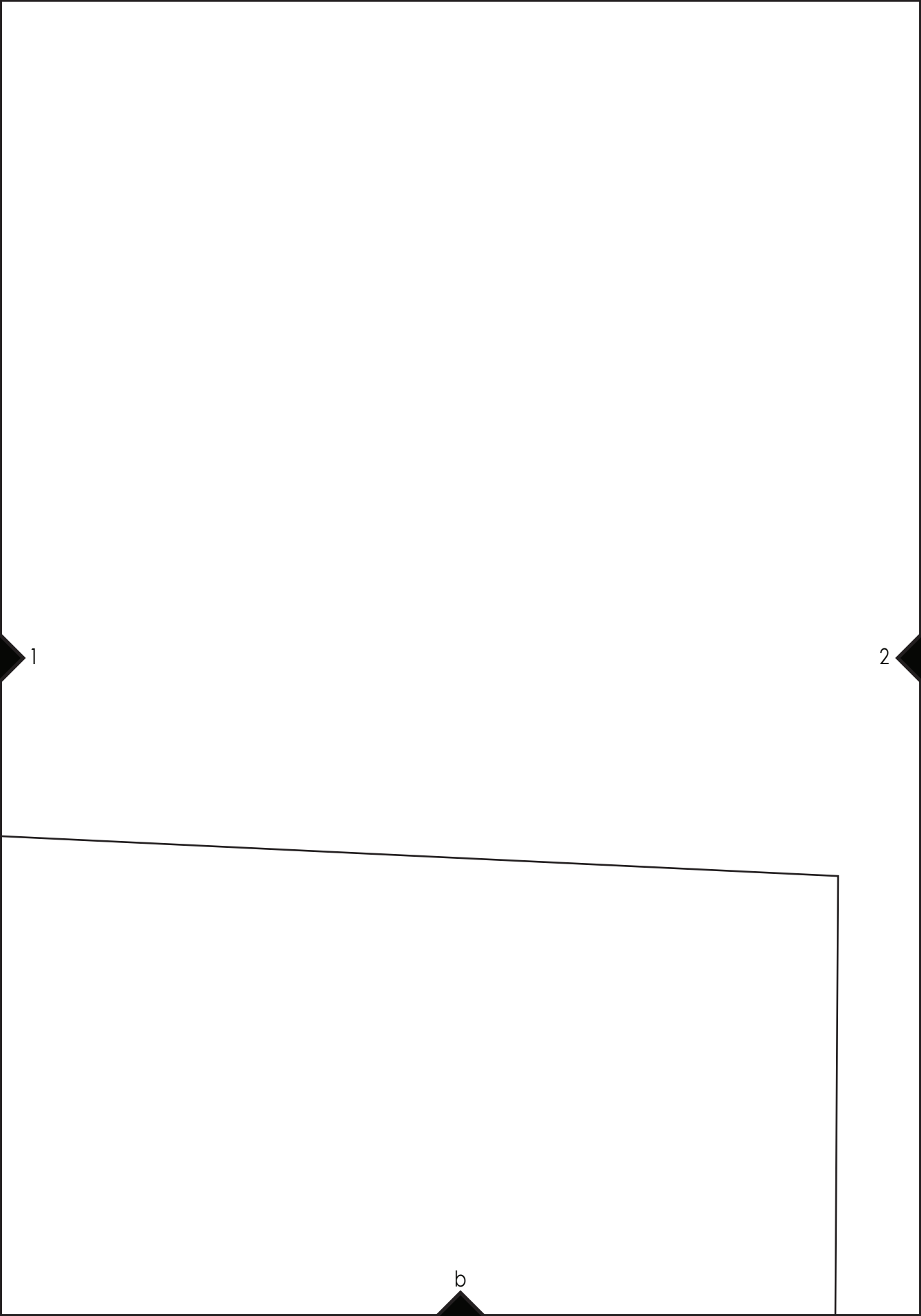
---

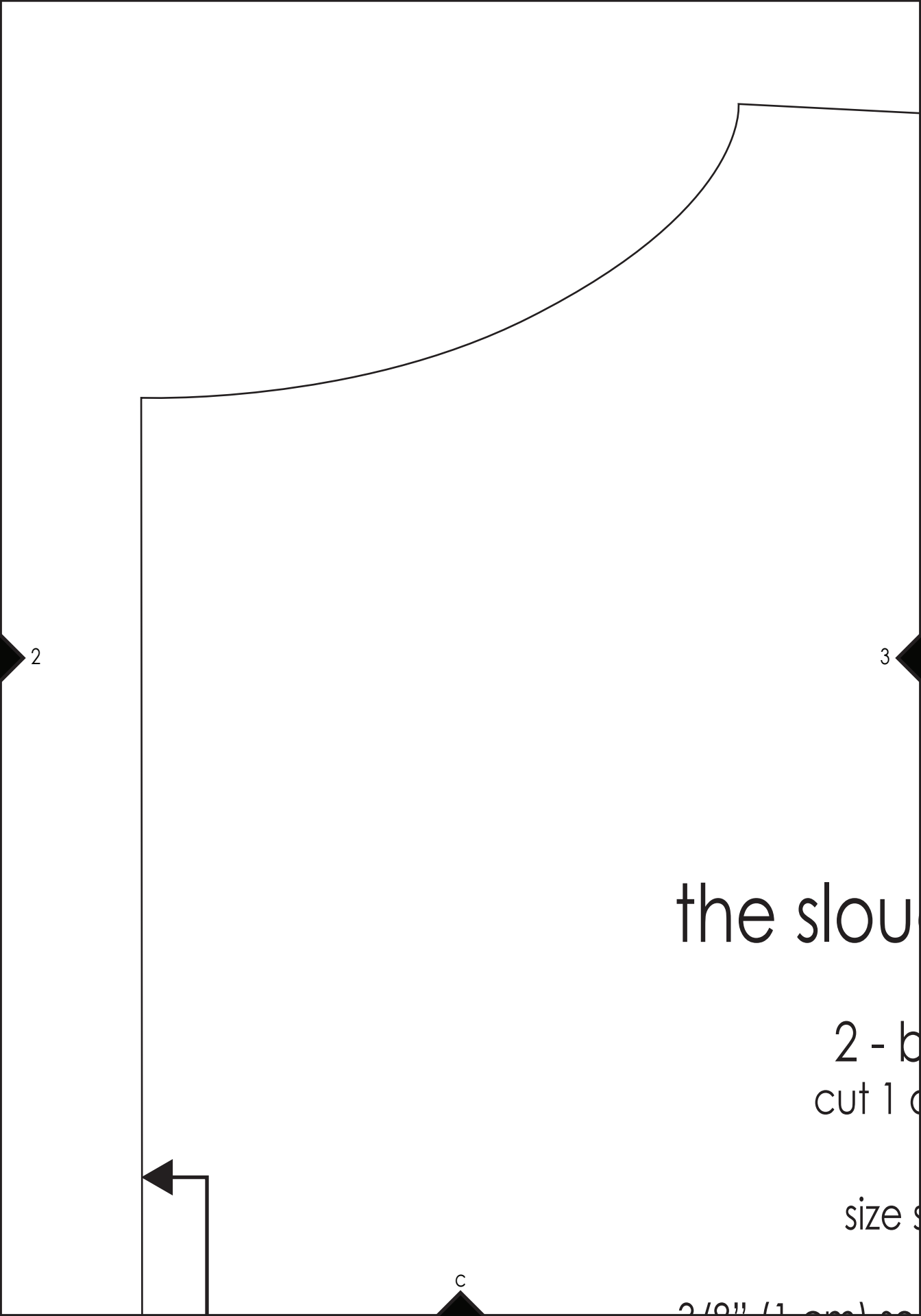
by Anne Weaver @ Craft Gossip  
<http://sewing.craftgossip.com>  
<http://luvaloo.wordpress.com>



1

a





2

3

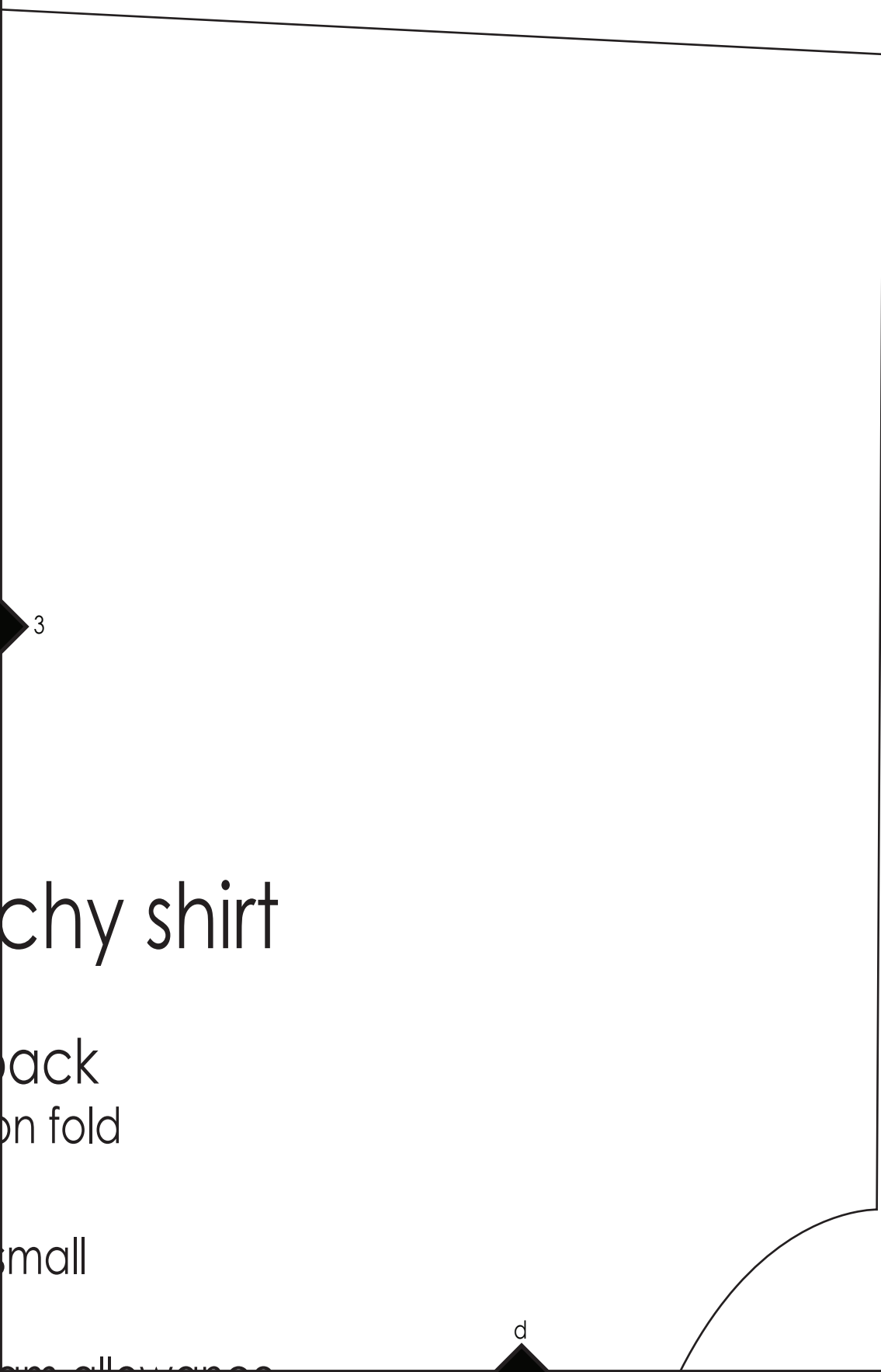
c

the slou

2 - b  
cut 1 d

size s

2 / 0" (1 cm) co



3

chy shirt

ack  
on fold

small

d

a

the slo

CU

S

4

3/8" (1 cm)

included on should

\*\* no seam allowanc



center fold

e

© 20



b

# ouchy shirt

- front  
1 on fold

size small

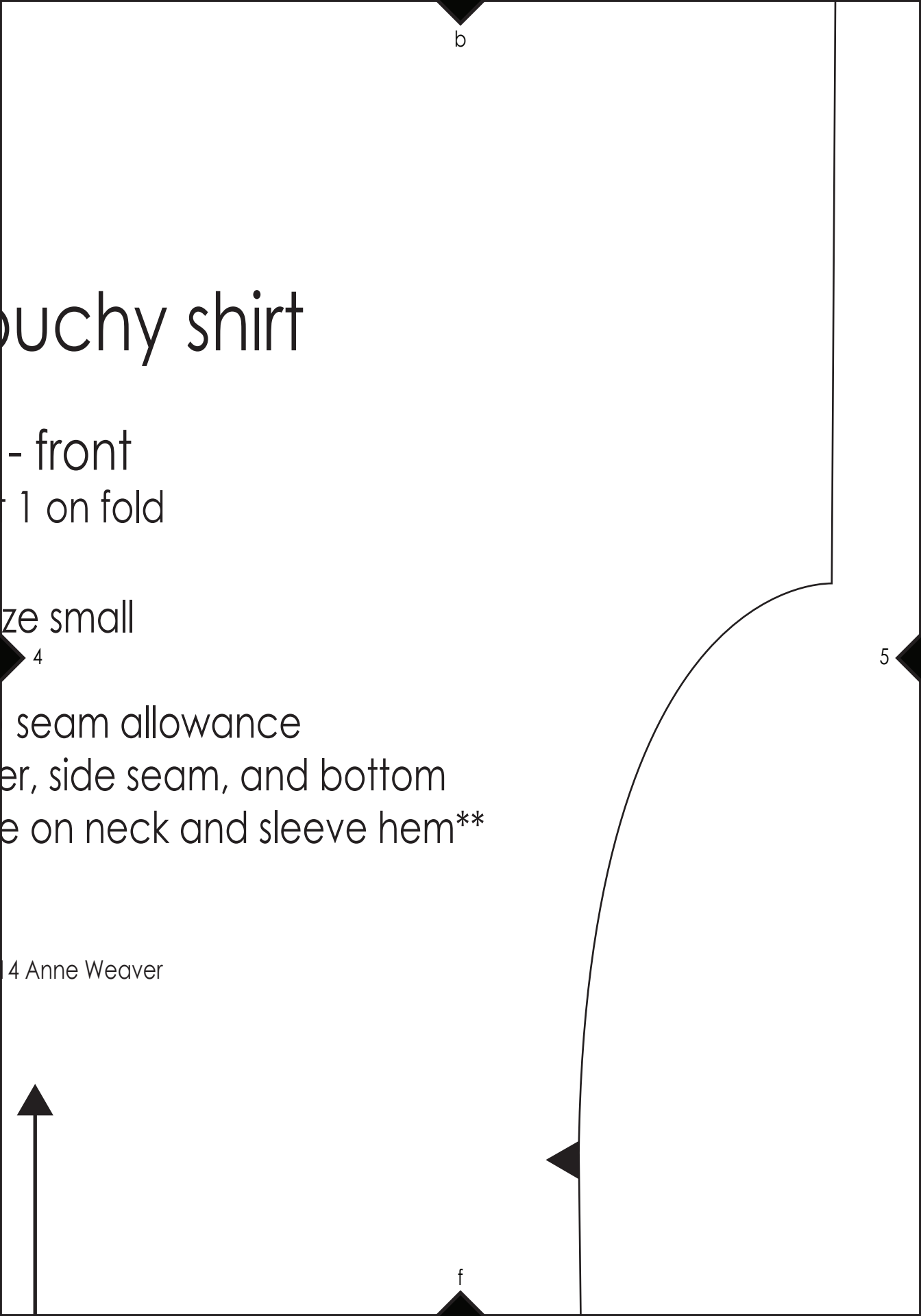
4

seam allowance  
er, side seam, and bottom  
e on neck and sleeve hem\*\*

5

4 Anne Weaver

f



3/8" (1 cm) seam

included on shoulder, sleeve

\*\* no seam allowance on

c

© 2014 Ann

center fold

5

6

g

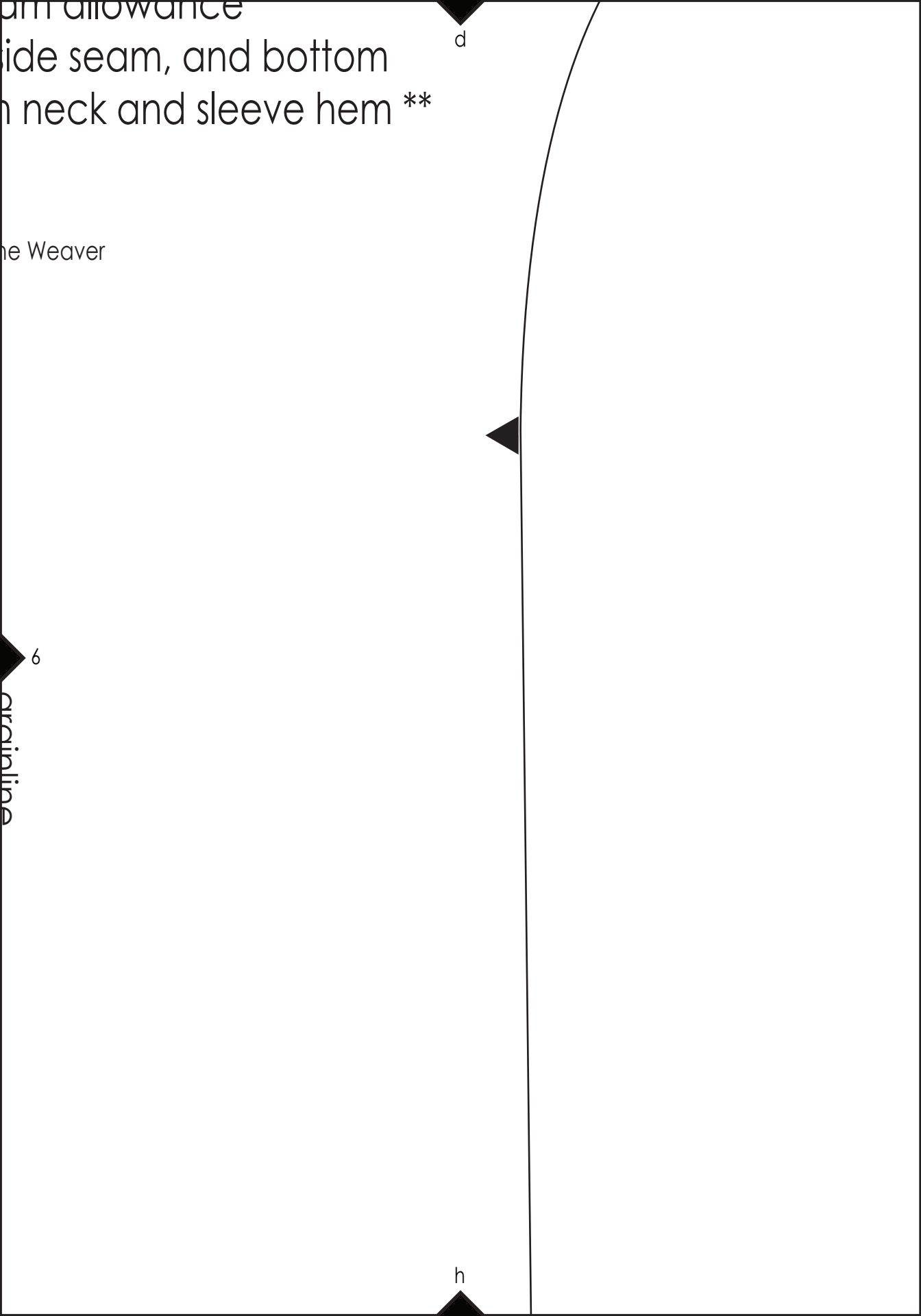
arm allowance  
side seam, and bottom  
neck and sleeve hem \*\*

the Weaver

6  
circumference

d

h



e



7

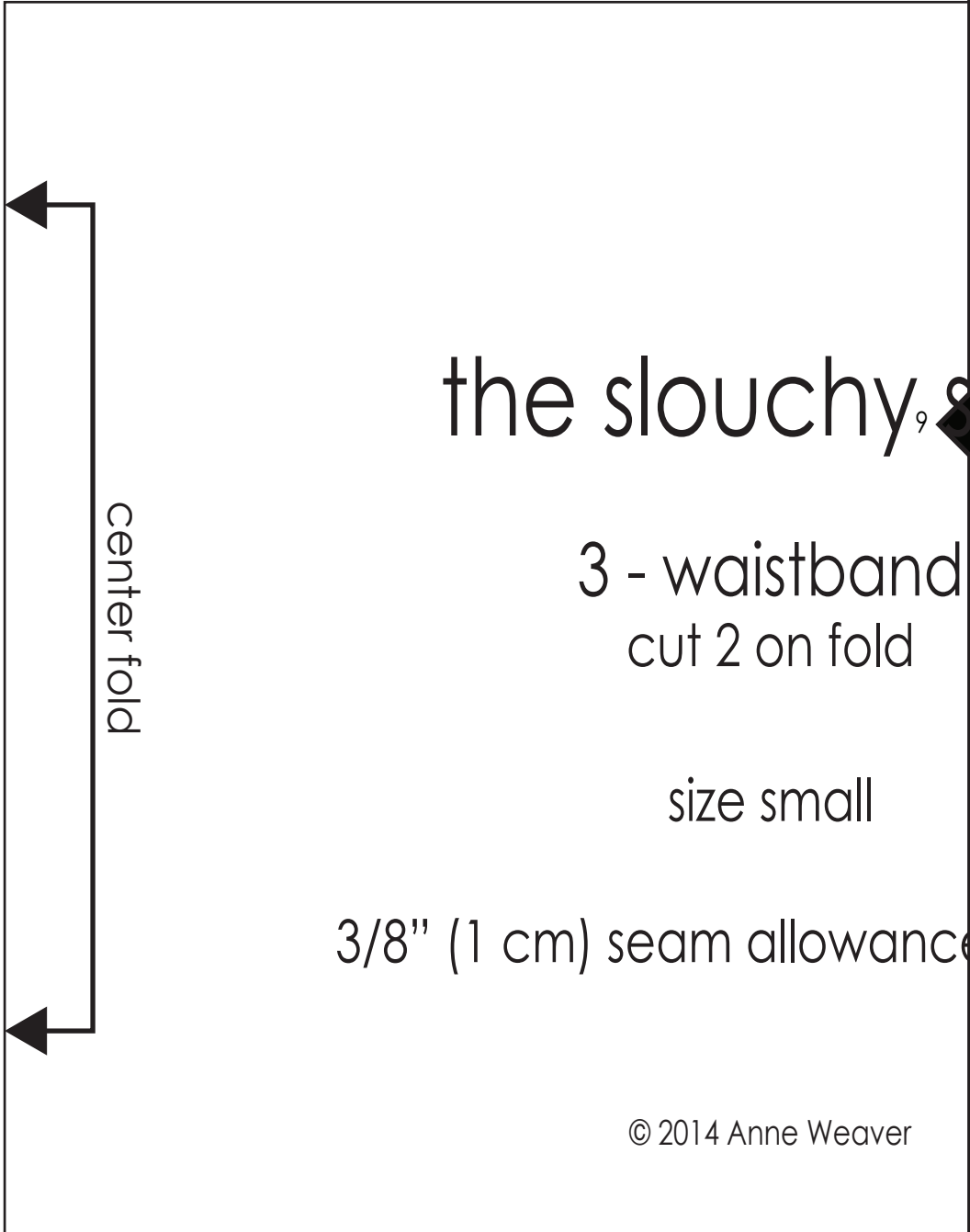
f

grainline

7

8

g



# the slouchy

3 - waistband  
cut 2 on fold

size small

3/8" (1 cm) seam allowance

© 2014 Anne Weaver

8

center fold

h

hirt

grainline

e included