

INSTRUCTIONS

Pieces

- 1 main front bodice
- 1 main front bodice lining

- 2 main back pieces
- 2 main back pieces lining

- 4 straps

Skirt Measurement

- Width- Waist multiply by 2.5
- Length- Under arm to knee plus 2"

Strap- fold in both sides of strip 1/2" in and then sew down closed.

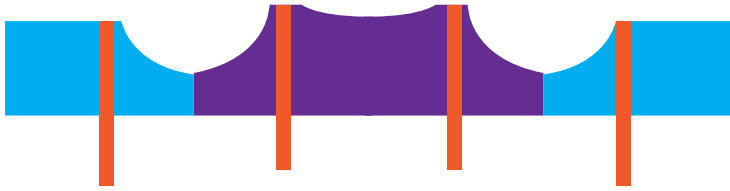
Hemming- Fold 1/4" in. Iron down. Fold 1/2" and sew down closed.

Back.- fold over the overlapping side of the back bodice and attach two buttons about 1.5" apart,

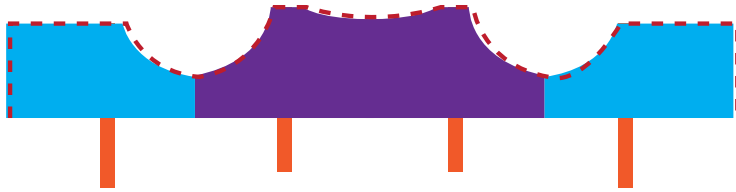
INSTRUCTIONS



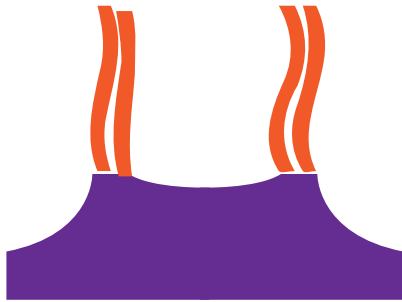
Sew the front bodice to the two back bodice at the sides right sides together. Iron down. Repeat for lining.



Take strap pieces and pin to the top of the main bodice.



Take lining bodice and place on top of main bodice, right sides together and sew on the red dotted lines.



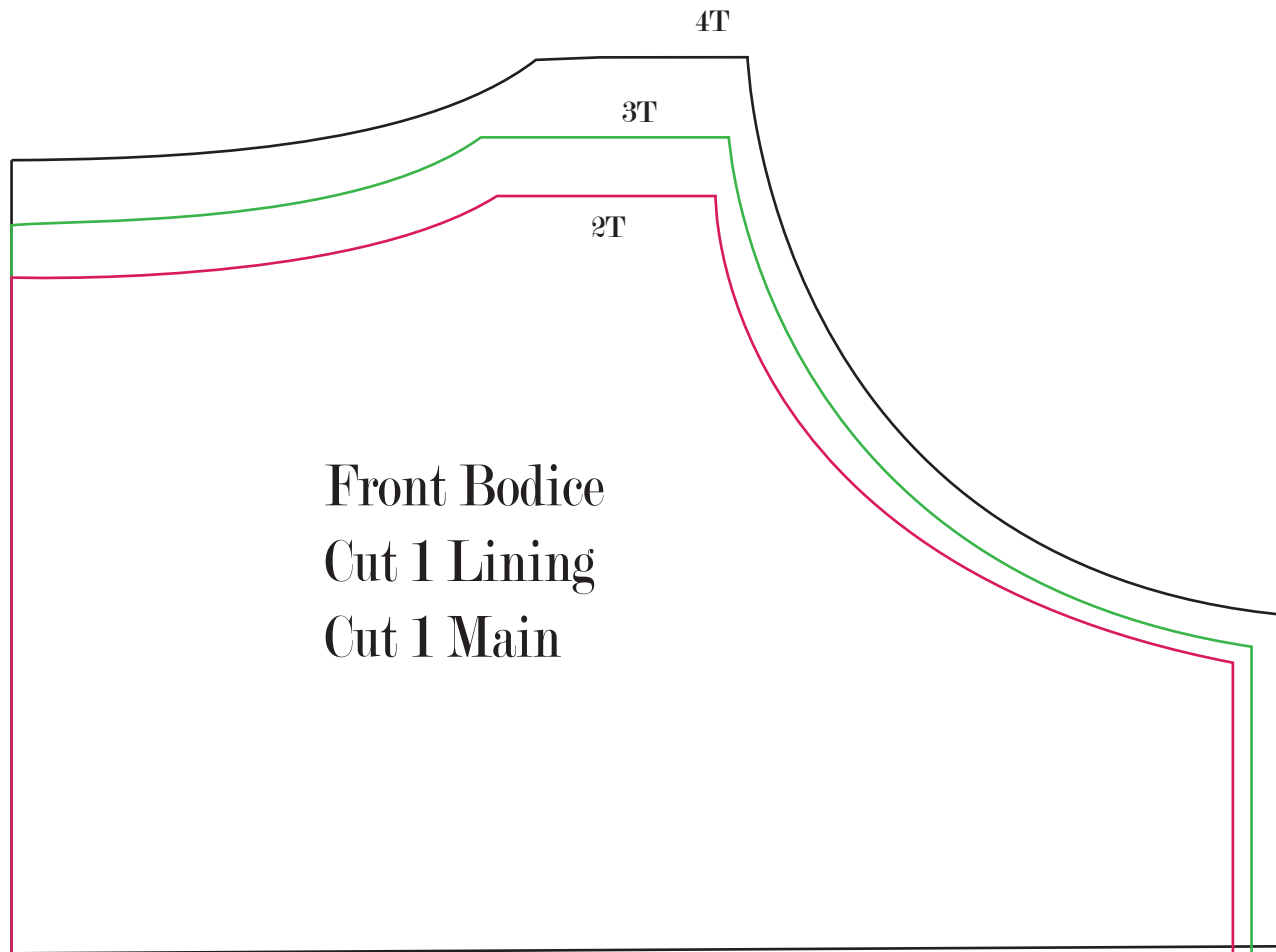
Turn bodice inside out and iron neatly.



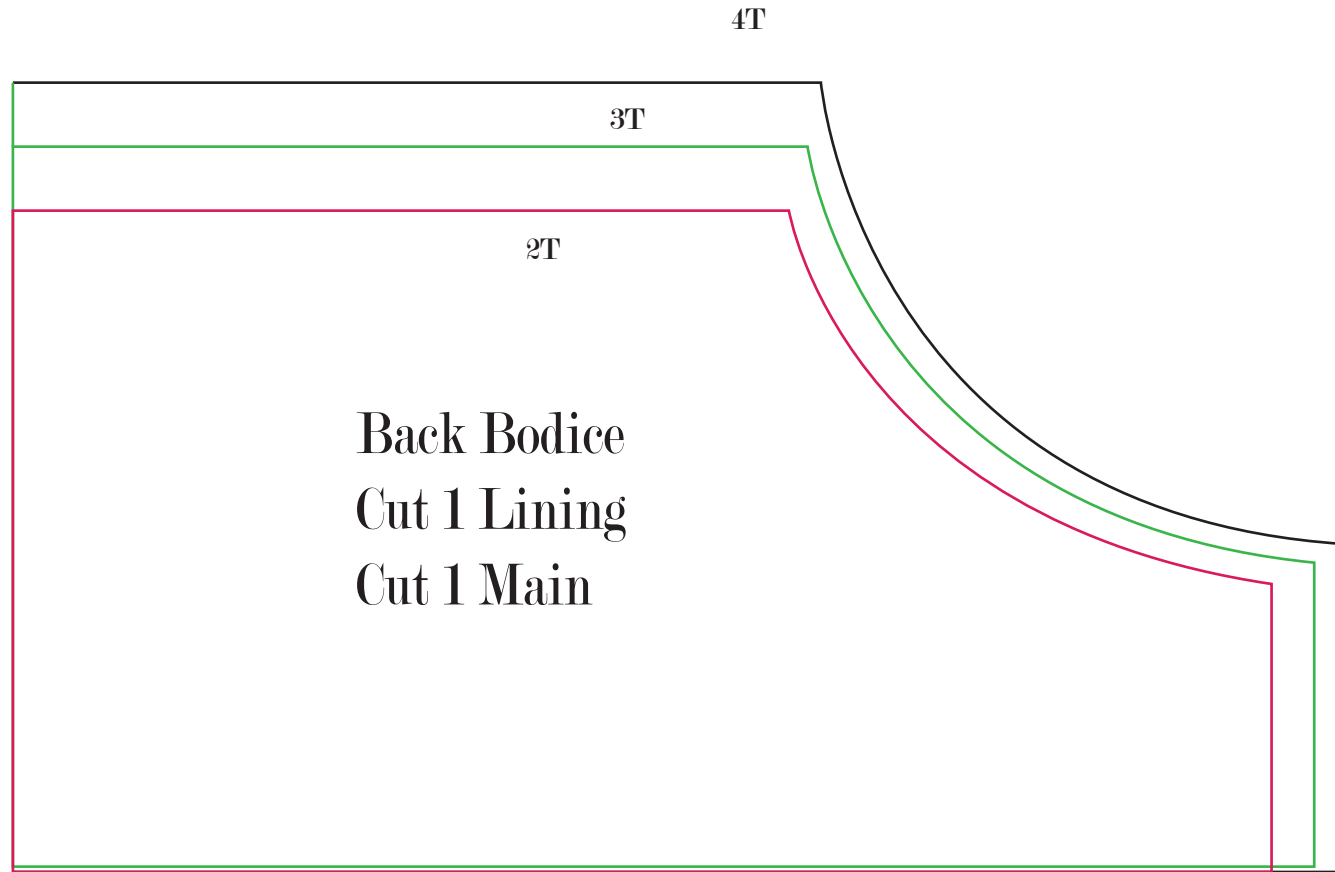
Take bottom panel and sew a long baste stitch on top. Pull thread to gather and fit neatly on the bodice. Sew bodice to gathered bottom right sides together.

Hem bottom panel.

Sunny Day Dress Pattern



Sunny Day Dress Pattern



Sunny Day Dress Pattern

Straps
Cut 4 of Main