



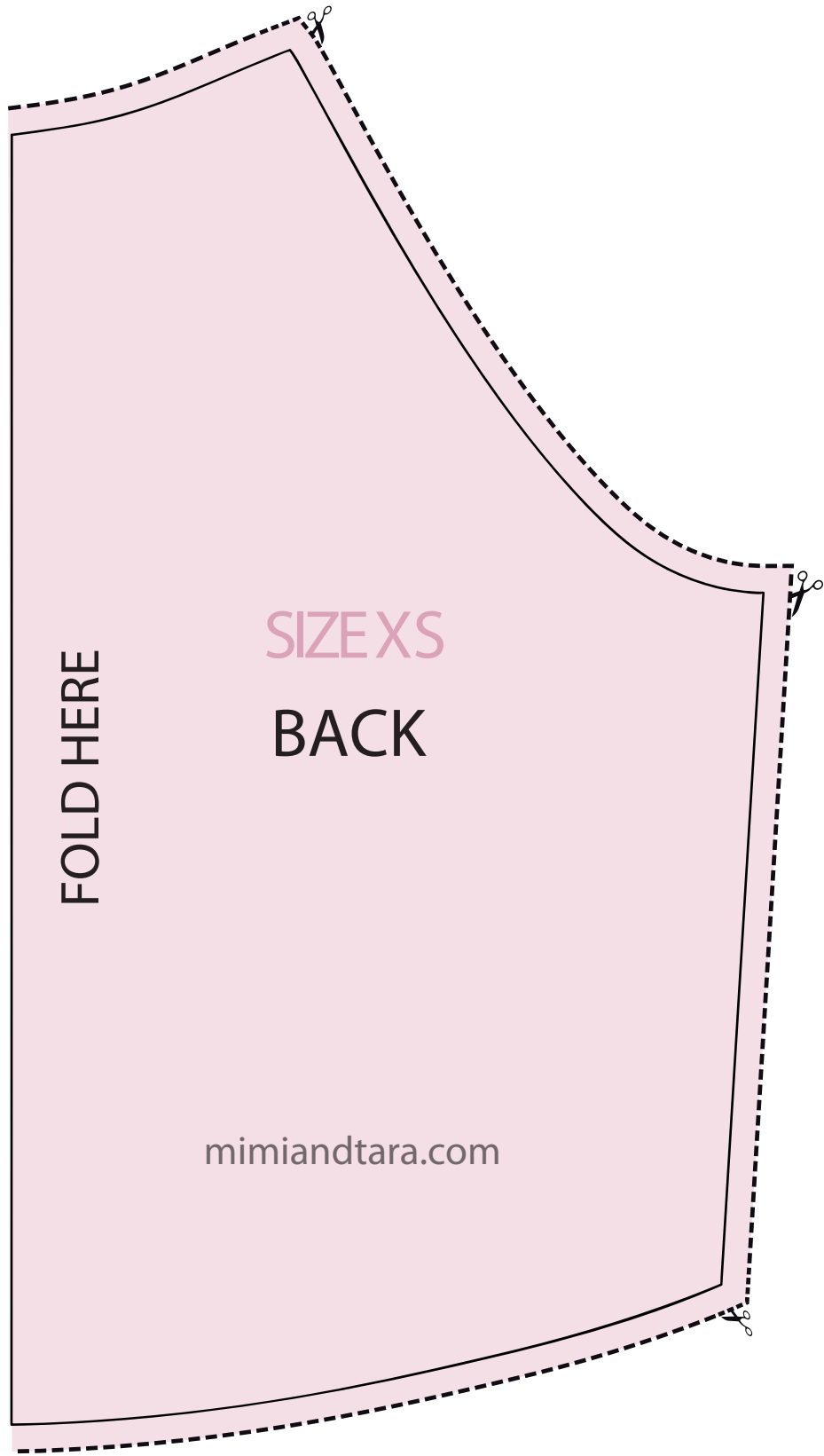
CAP COSTUME HALLOWEEN HARNESS DRESS PANTS PANTY XMAS SWEATER T-SHIRT VEST SHIRT



**Please refer to Mimi & Tara for the sewing instructions for this Dog Sweater (Ranglan) Pattern at**

**<http://www.mimiandtara.com/2011/09/dog-sweater-patterns.html>**

Find more great sewing patterns at  
**[MimiandTara.com](http://www.mimiandtara.com)**

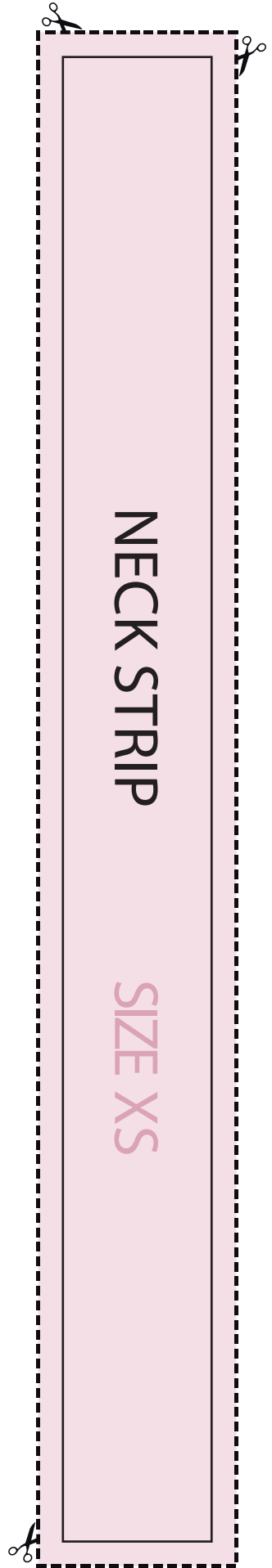
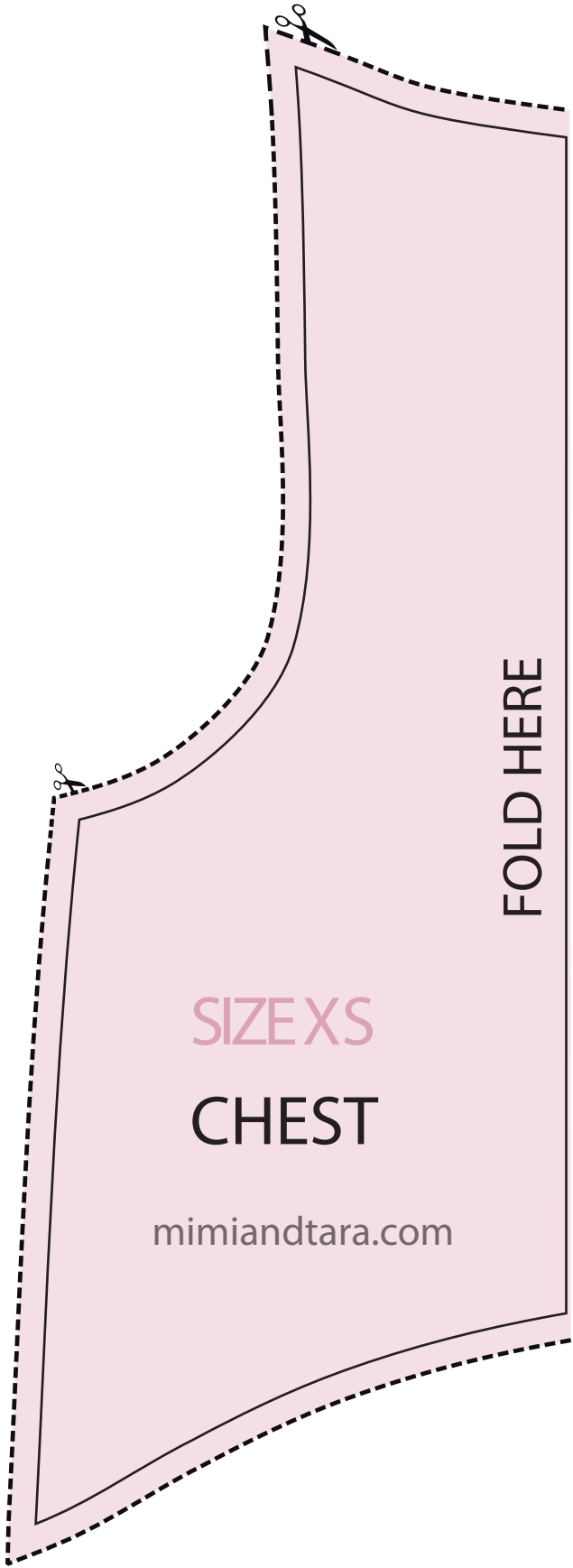


FOLD HERE

SIZE XS

BACK

mimiandtara.com





SIZE XS

2 SLEEVES

cut the left sleeve opposite  
to the right sleeve

mimiandtara.com