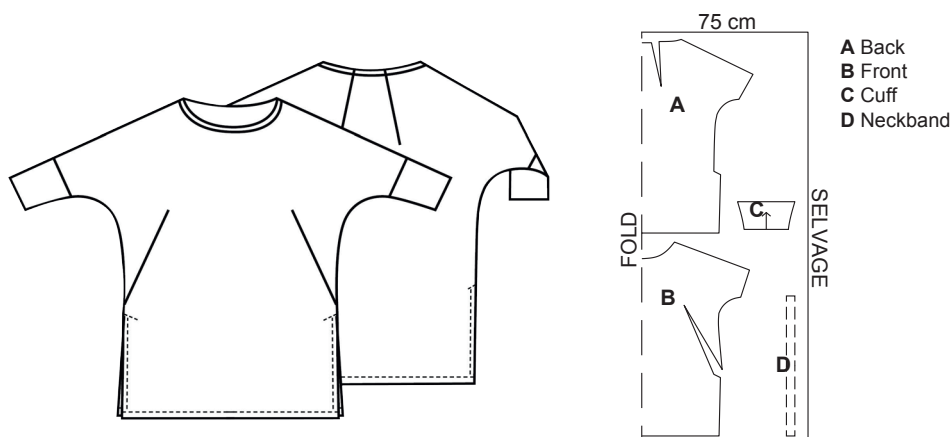




TUNIC XS(S)M(L)XL(XXL)

XS= 34, S= 36/38, M = 40/42 L=44/46 XL=48/50 XXL=52/54
Garment length approx. 86 cm.

Supplies: Jersey knit 1,90(1,90)1,95(1,95)1,95(2,00) m, width 150 cm.
Twin needle for sewing machine.



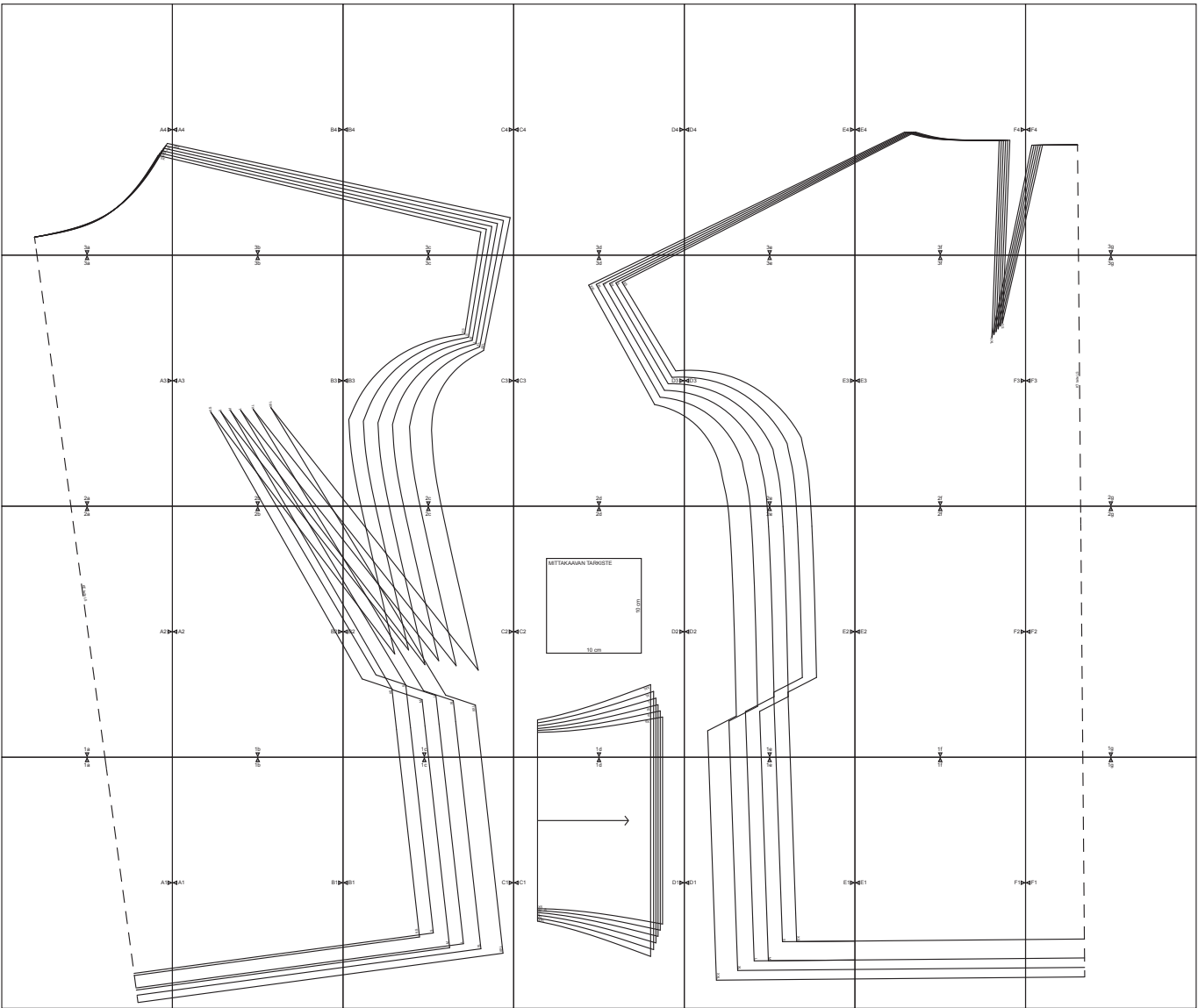
Preparations: Tape the pages together aligning each page with the symbols on the patterns.

Cutting: See cutting layout and add 1 cm seam allowances while cutting, for neckline 0,5 cm. Add 2 cm seam allowances for the hem of dress and sleeves and 3 cm for the edges of the openings. Cut a 3 cm wide vertical panel in the length of the neckline, and add 1 cm seam allowance in the short ends.

Sewing: Sew all seams using your serger or sewing machine (elastic stitch).

1. Sew the darts on the front and back.
2. Sew the shoulder seams. Sew the sides of the shirt and leave openings in the hem.
3. Sew the sides of the cuff together. Sew the cuff to the shirt. Sew the other cuff in the same way.
4. Fold the bottom of the shirt and the sleeves and sew using your twin needle.
5. Topstitch the seam allowances on the openings to the inside with a straight seam.
6. Sew the short sides of the neckband right sides together. Sew one side of the neckband to the neckline with right sides together. Fold the neckband to the wrong side, the width of the neckband should now be approx. 7 mm on the right side. Topstitch from the right side along the seam, the open side of the neckband will be fastened to the inside with the same seam.

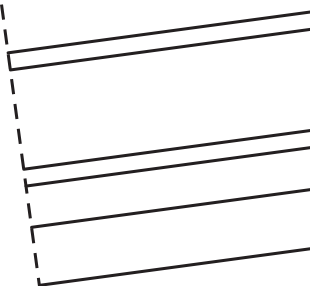
DESIGN: NOSH



1a



A1

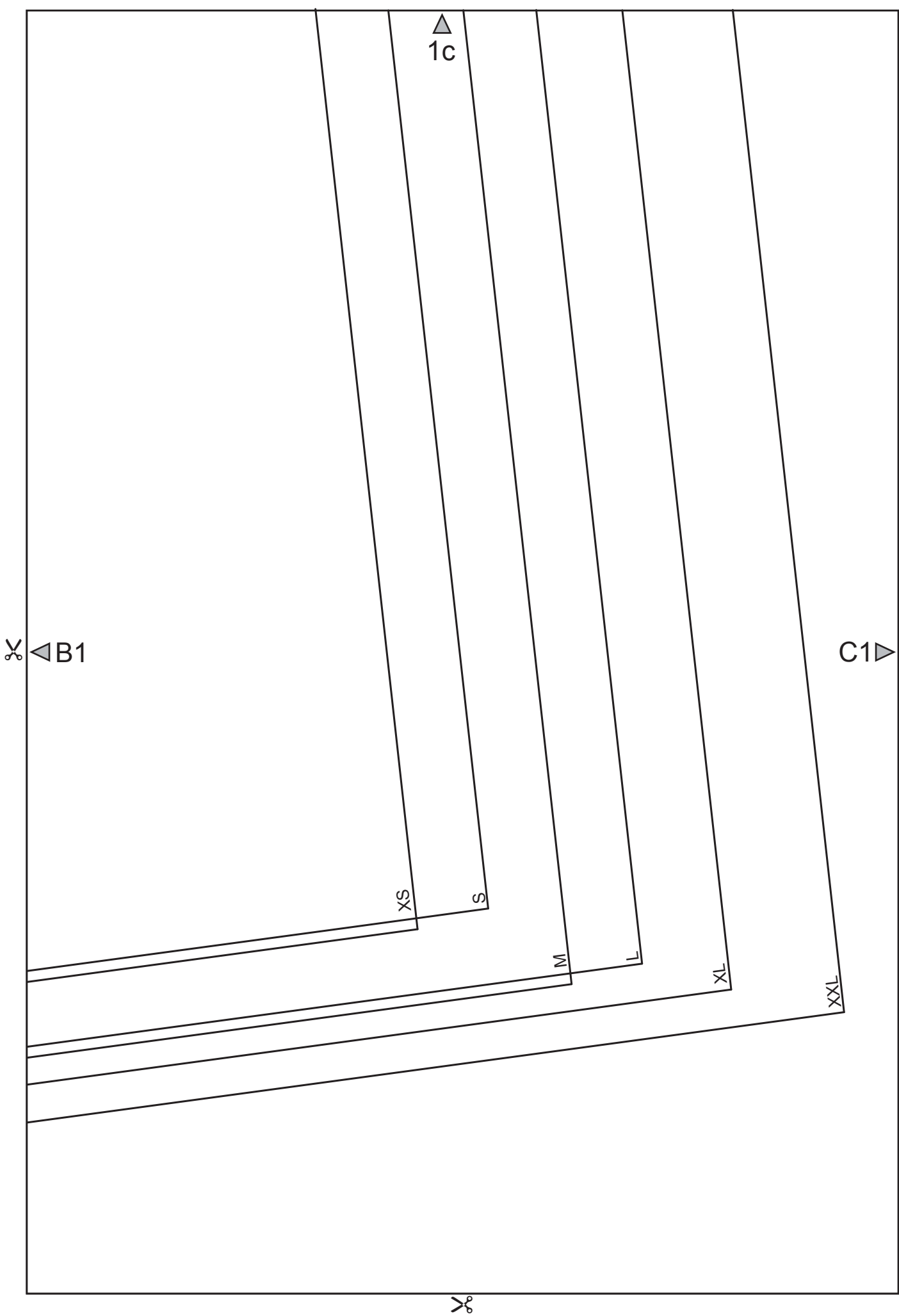


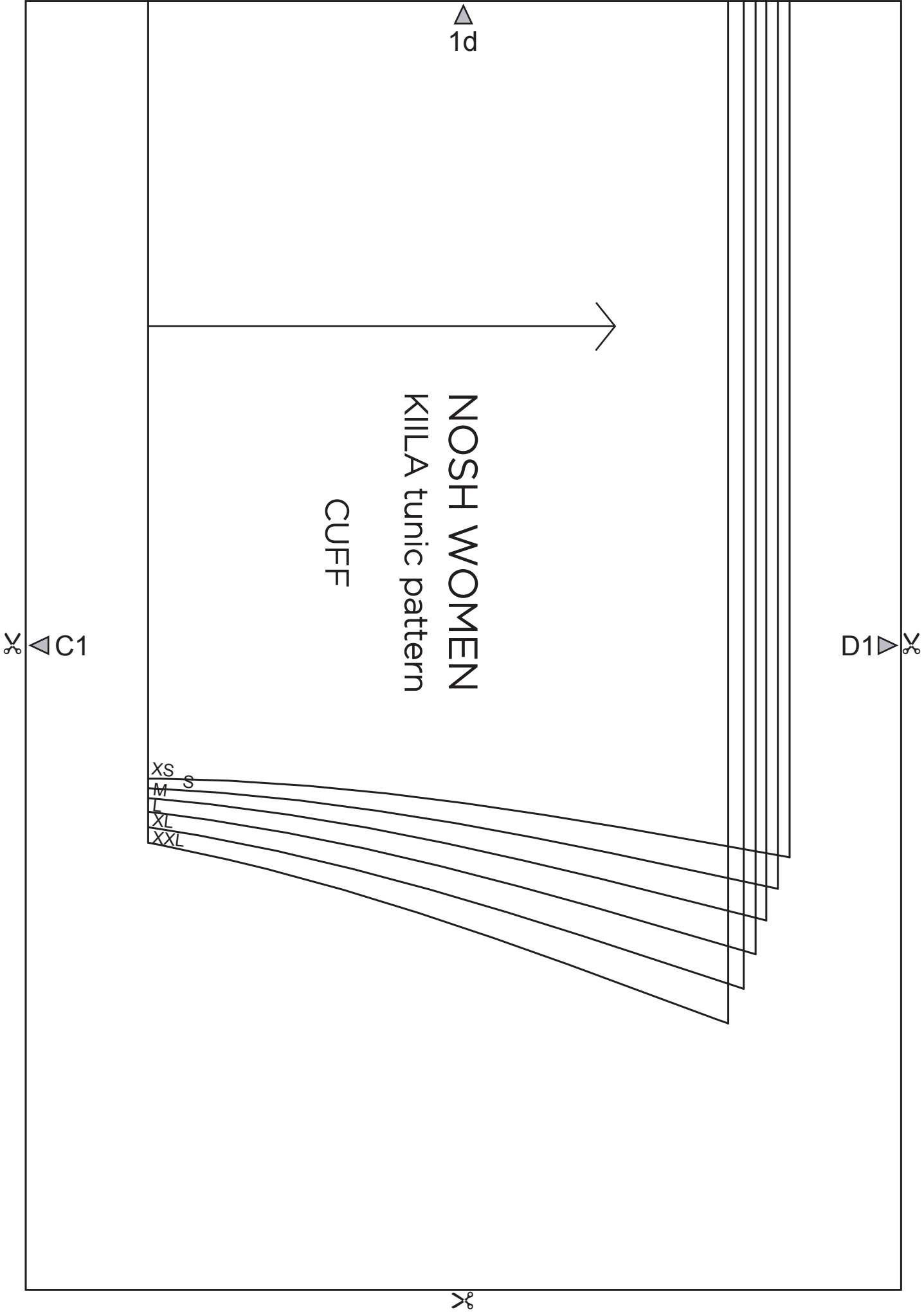
△
1b

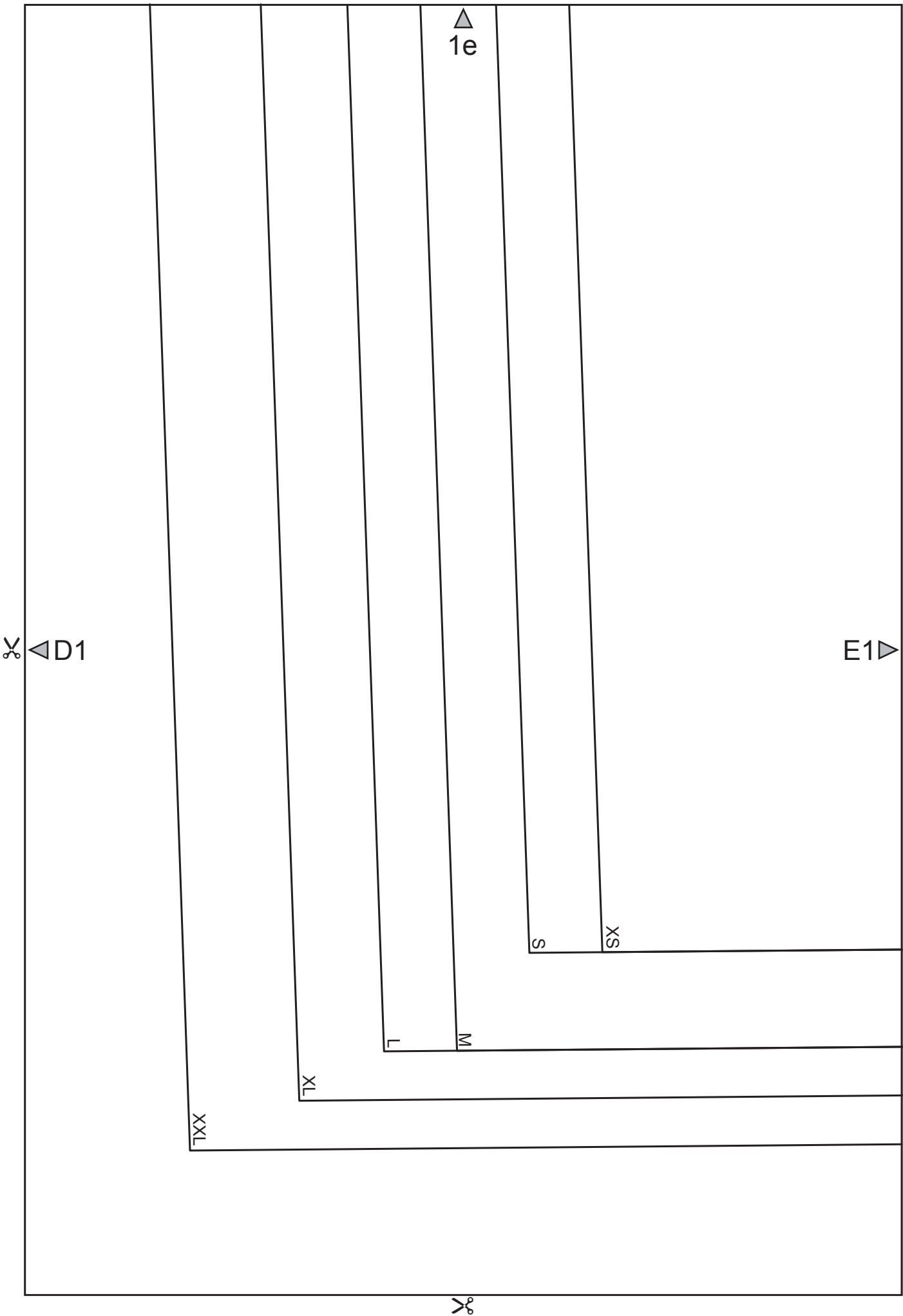
✂️◀️ A1

B1▶️

✂️







1f

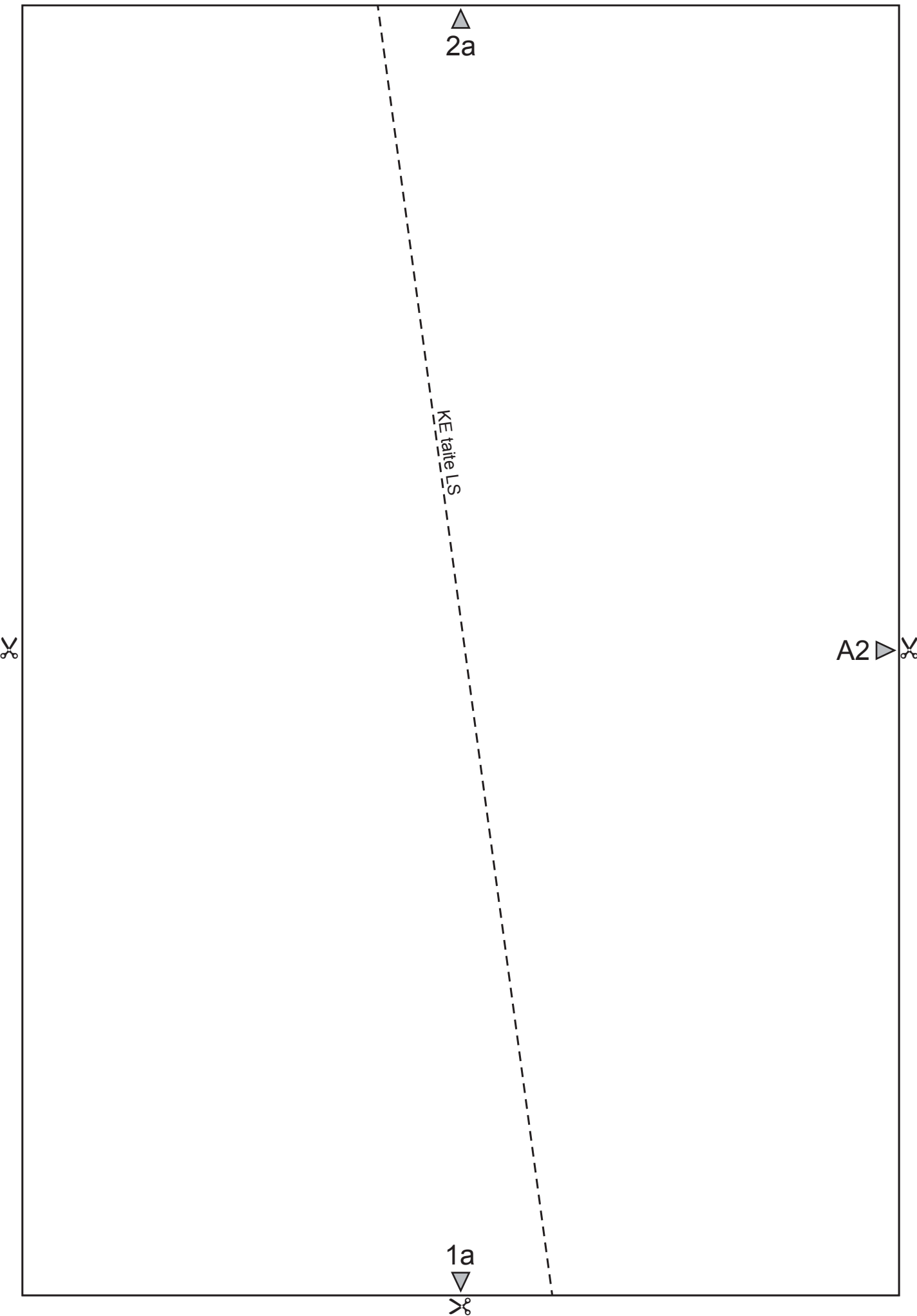
E1

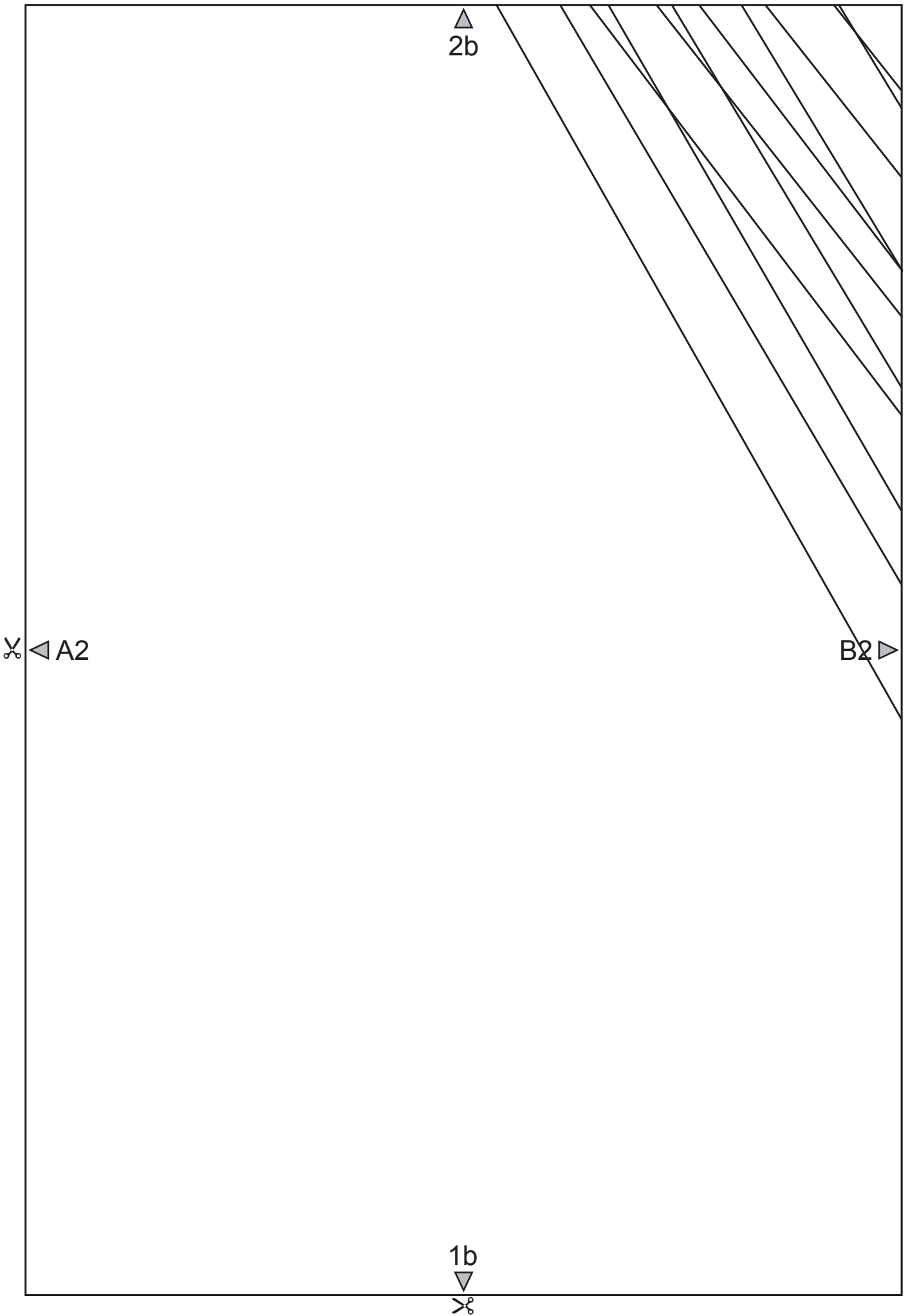
F1

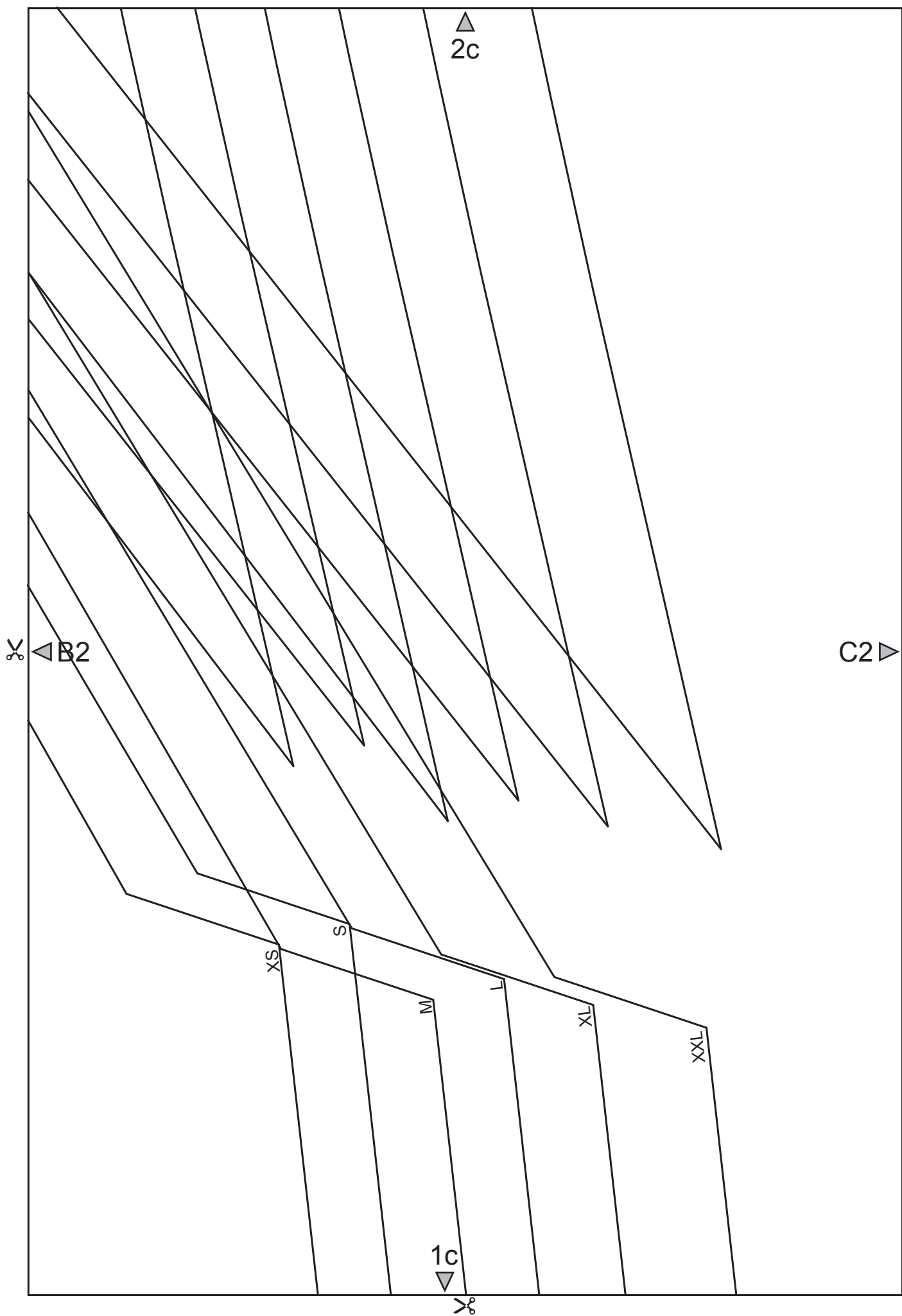
1g

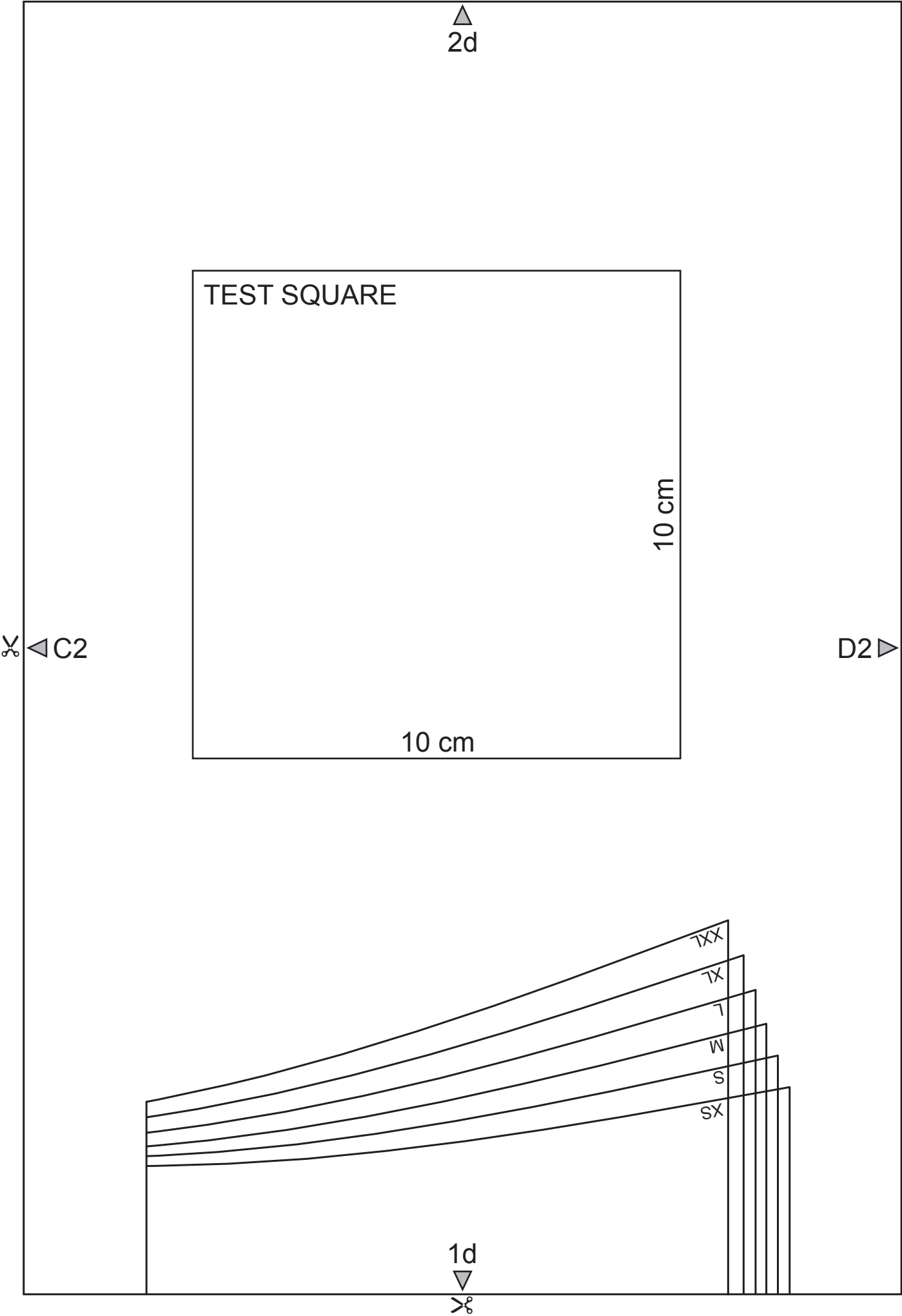
F1

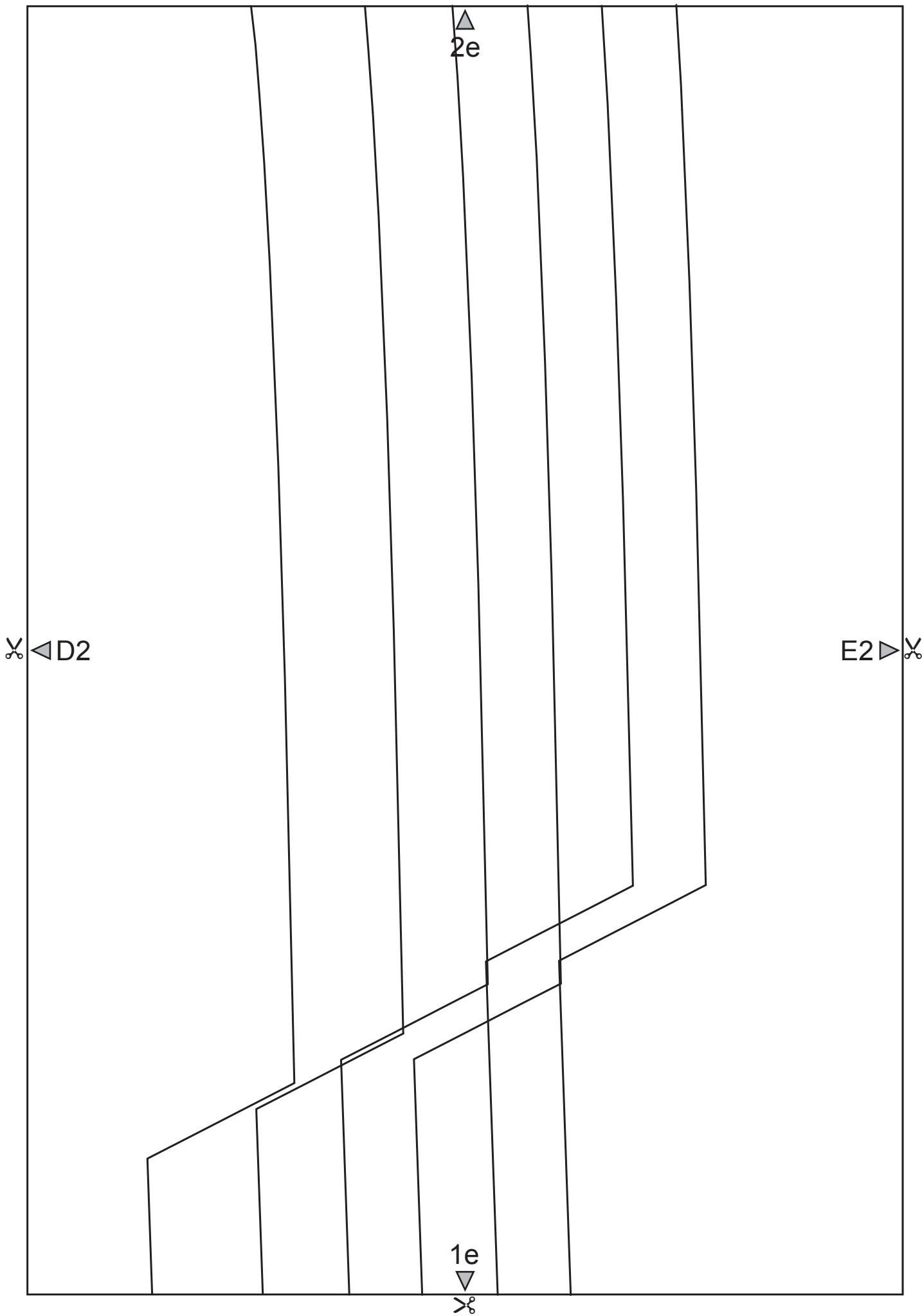










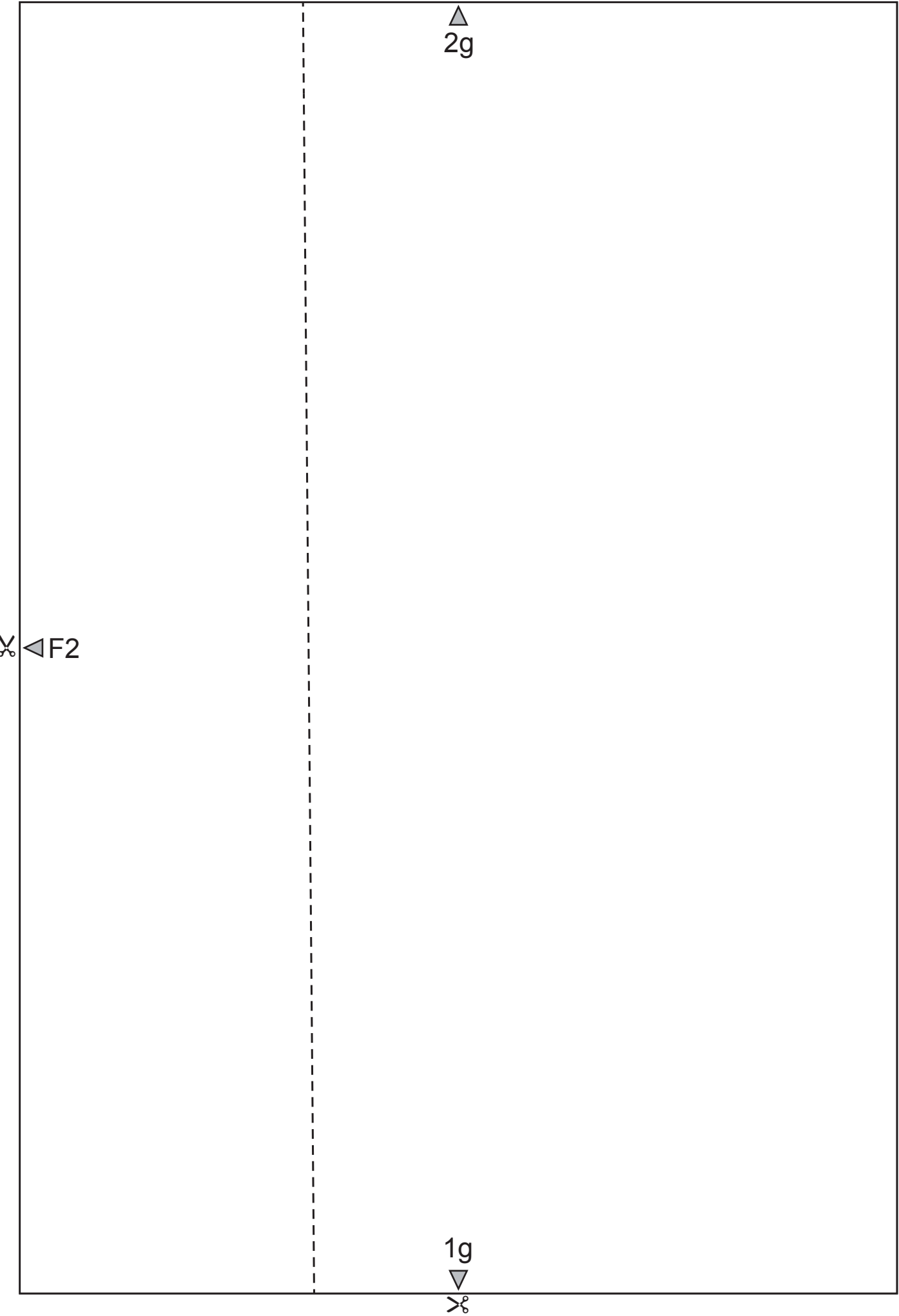


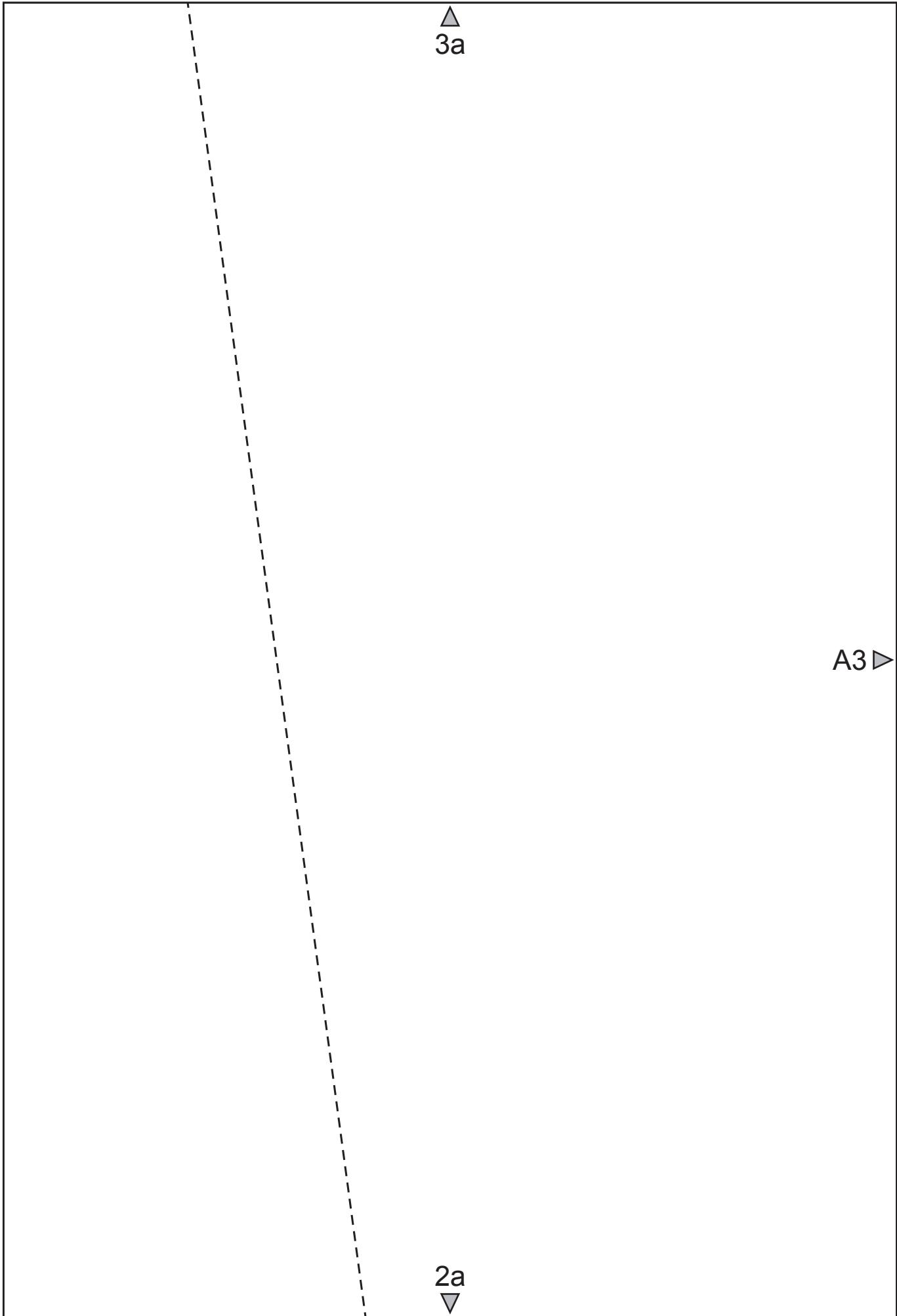
2f

1f

E2

F2





3b

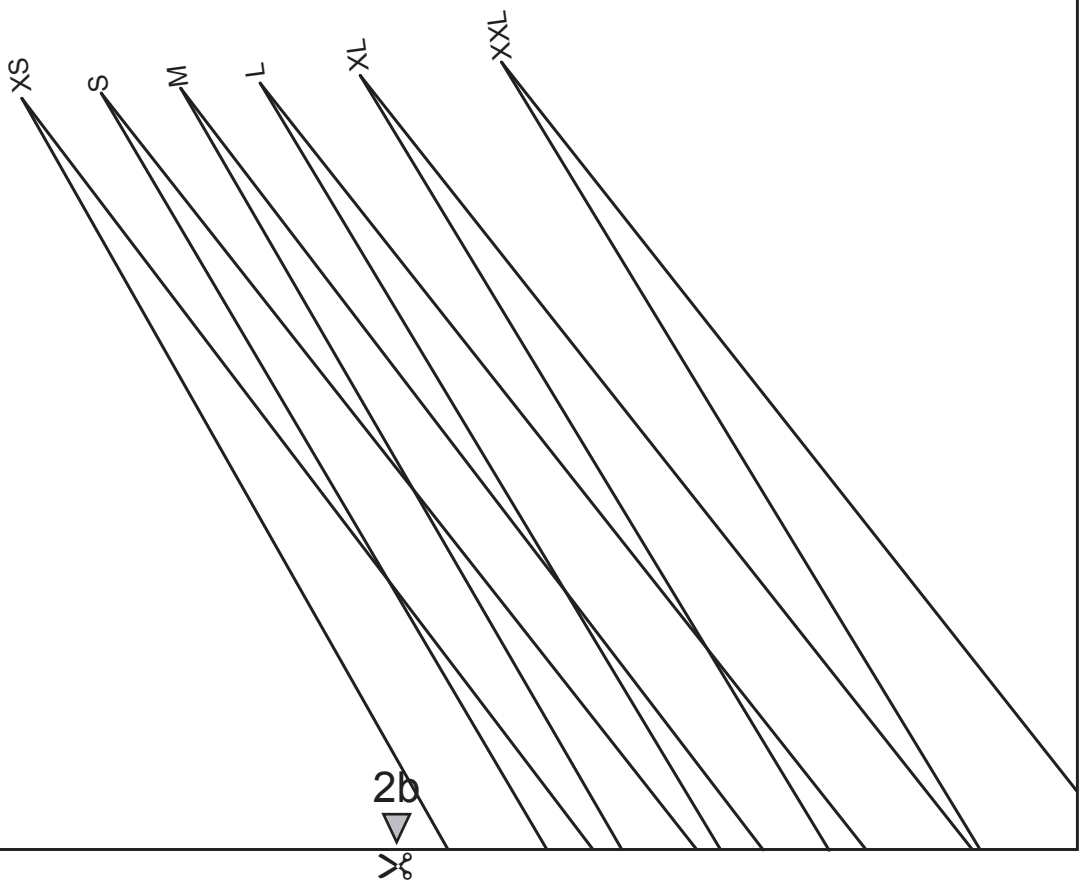
NOSH WOMEN

KIILA tunic pattern

FRONT

✂️ ◀️ A3

B3 ▶️ ✂️



3c ▲

2c ▼ ✂

✂ ◀ B3

C3 ▶

XS

S

M

L

XL

XXL

3d

xxx

xx

x

z

s

xs

D3

2d

>

>

C3

>

>

3e

2e

✂ D3

E3 ▶

✂

3f

NOSH WOMEN

KIILA tunic pattern

BACK

XXL

XS

E3

F3

2f

✂️ ◀️ F3

KT taite LS

3g
▲

2g
▼
✂️

✂️



3a



TX
W
S
SX

✂️ ◀️ A4

B4 ▶️ ✂️

XXX

3b
▼
✂️

✂️◀️B4

C4▶️✂️

3c
▼
✂️

✂️ ◀️ C4

D4 ▶️ ✂️

3d
▼
✂️



✂◄D4

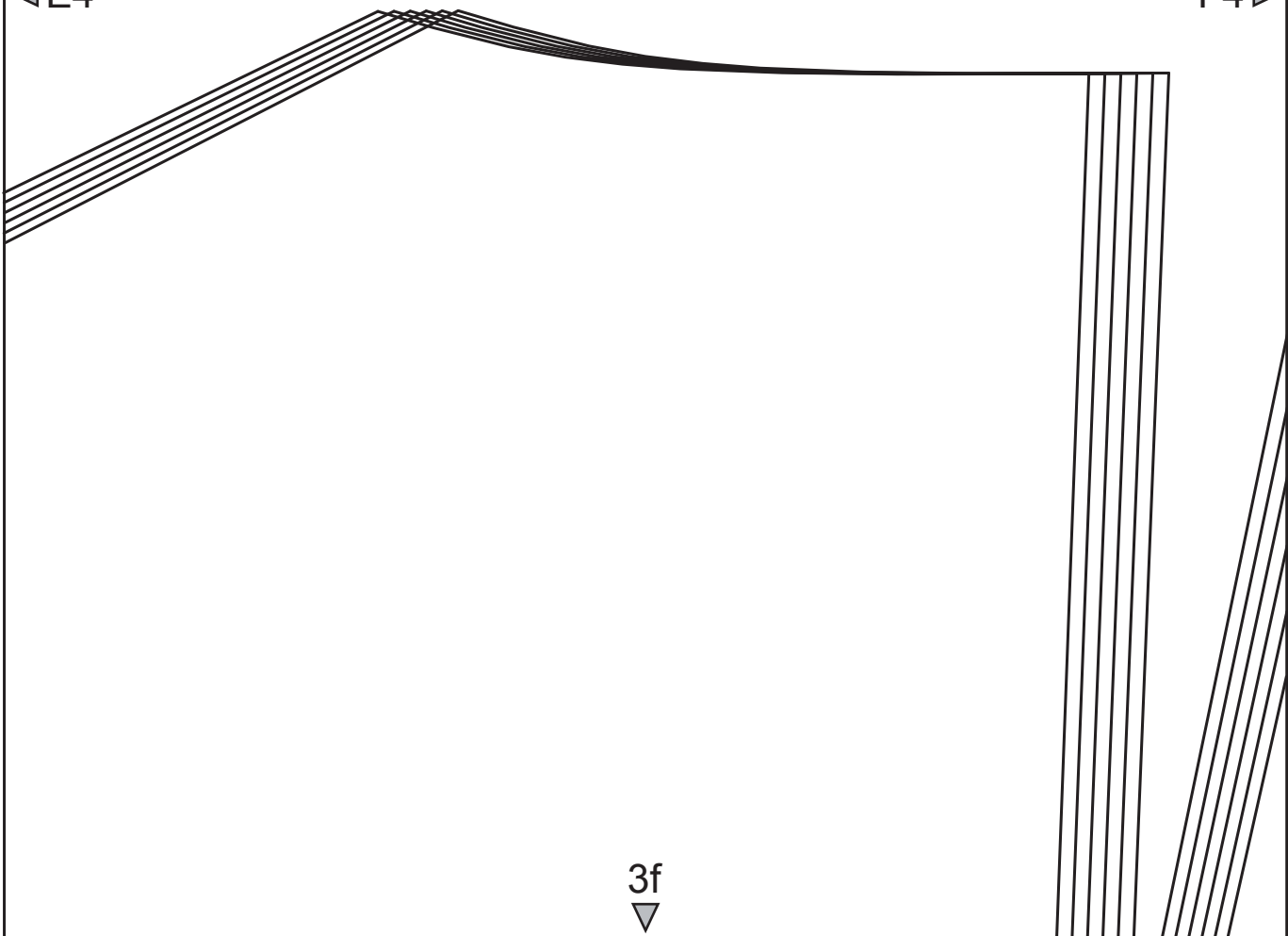
E4►✂

3e
▼
✂

✂◄E4

F4►✂

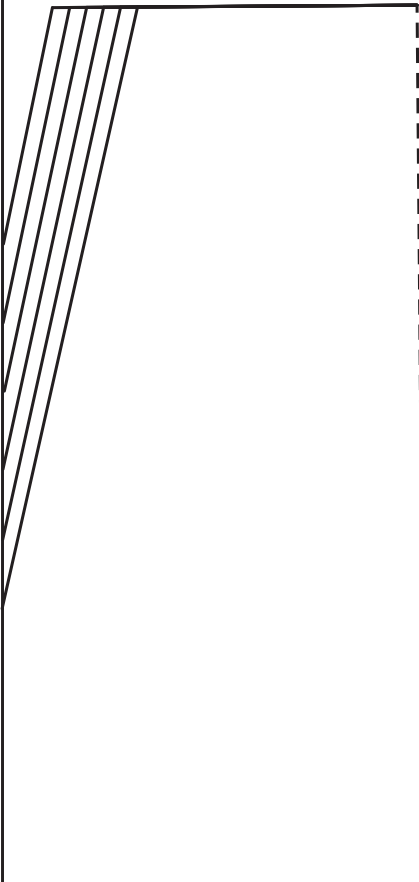
3f
▼
✂



NOSH WOMEN

KILLA tunic pattern

✂️ ◀️ F4



3g
▼
✂️