

# *In the* DOG HOUSE

*Pamper your pooch and create its own little padded house and pet mat with pretty paw appliqué using Butterick 5867*

Photographer **RENATA STONYTE**  
Model **OSCAR**

DOWNLOAD  
YOUR  
**FREE**  
TEMPLATE



This pretty little house has been reproduced from Butterick 5867, which also includes a carry bag, hanging toy organiser and soft toy bone. It is just one of many patterns in the Butterick range; visit [www.sewdirect.com](http://www.sewdirect.com) to see more and buy the full-size pattern



**SKILL LEVEL:** ++ ++ ++ ++

**MATERIALS:**

- 1m 140-150cm-wide fabric
- 60cm 140-150cm-wide fabric, or 1.20m 115cm-wide fabric (Fabric 1)
- 1m 115cm-wide lining fabric (contrast Fabric 2)
- 60cm 140-150cm-wide fabric for mat (contrast Fabric 3)
- 2.10m 2.5cm-thick Pellon Flex-Foam fusible wadding
- 18x13cm clear vinyl
- 70cm 13mm-wide double-fold bias tape
- 1.2m 2cm-wide Velcro
- 11cm square felt for appliqué (optional)
- 11cm square paper-backed fusible webbing for appliqué
- pattern paper
- free templates from [www.sewnowmag.co.uk](http://www.sewnowmag.co.uk)

**FINISHED SIZE:**

49x41cm

**FABRIC TYPES:**

Medium to heavy woven fabric such as home decorating fabric, canvas, denim and twill

**NOTES:**

Seam allowance is 15mm unless stated  
Transfer all markings from pattern pieces onto fabric  
Have plenty of space around your machine when sewing

**PREPARE PATTERN AND FABRIC:**

Create templates from the pattern paper as follows:

**Roof:** 57x53cm rectangle. Draw a grain line parallel to the shorter side. Fold the paper in half with short sides together and crease. Open out and mark the crease as the stitching line. On the right-hand side of the pattern piece, mark placement lines for Velcro 4cm from the top and bottom edges, 7cm in from the sides and 5cm from the sides and top and bottom. Cut two roofs from Fabric 1.

**Bottom and sides:** 46x90cm rectangle. Draw a grain line parallel to the long edge. Mark stitching lines from top to bottom of short edges 28.5cm from the sides. On the right-hand side of the pattern piece, draw a placement line 4cm from the right edge and 2cm from the top and bottom. Cut 1 bottom section from main fabric and another from Fabric 2 (lining).

**Mat:** 46x38cm rectangle. Draw the grain line parallel to the long edge. Mark a cut out for each corner 13mm square. Cut two pieces from Fabric 3.

**Tabs:** 7x4.5cm rectangle. Mark a fold line down the centre from the top to bottom (short side). Cut four from main fabric.

“TRIM THE FOAM TO THE STITCHING LINE OF THE PATTERN TO AVOID BULGING SEAMS. SEW JUST OUTSIDE OF THE FOAM”



Leanne

**Paw applique:** Download and cut in fabric to contrast with base piece

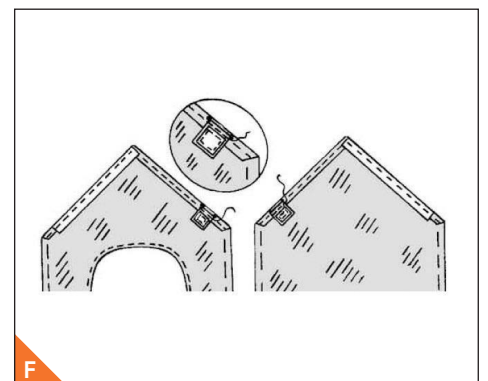
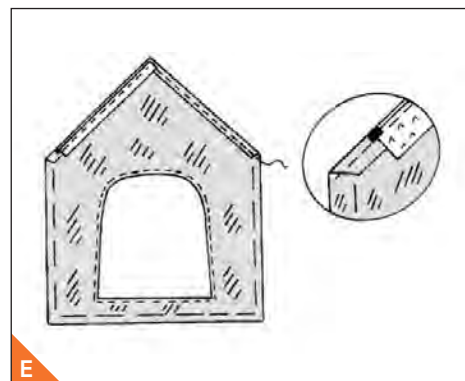
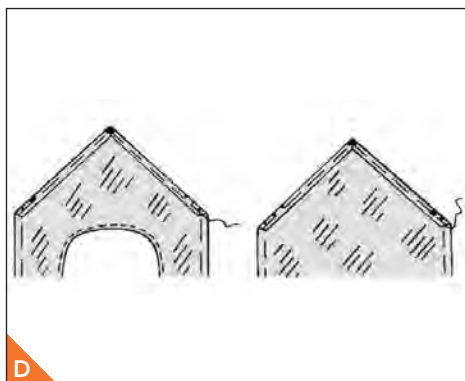
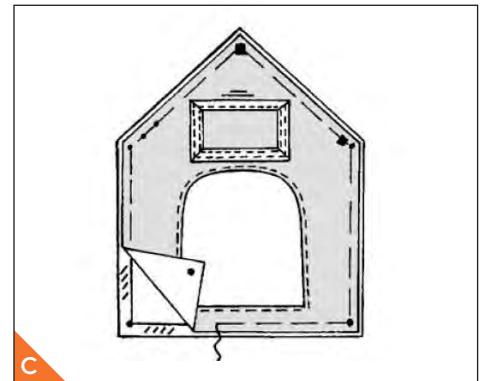
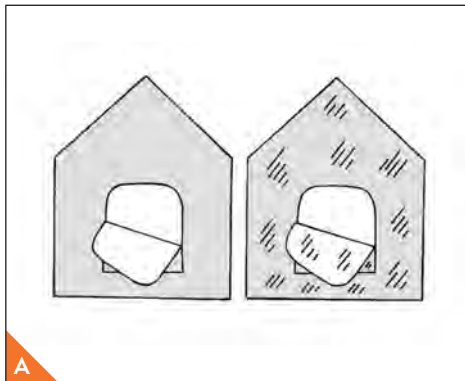
**House front and back:** Download and cut two in main fabric and two in Fabric 2 (lining). Mark cutting lines for door and window on reverse of fabric.

**From the fusible foam, cut:**

House back and front foam template (download)  
2 26x42cm sections each the sides  
52x48cm piece for the top/roof  
33x41cm piece for the mat

**HOW TO MAKE:**

1 For the front, cut one front/back section along the cuttings lines for the opening. For the front lining (Fabric 2), cut an opening



in one contrasting fabric front and back in the same manner. (See Pic A.)

**2** With right sides together, pin the front lining to the front, ensuring edges are even. Stitch along the centre stitching lines around the opening, pivoting at the small circles. Clip to small circles. (See Pic B.)

**3** Turn right side out, press and then edge-stitch around the opening edge.

*Why not add a window for your dog's name? Cut a 15x10cm clear vinyl rectangle*

**4** Cut the opening out of the front foam as before, following the cutting lines and cutting up the centre front to the base of the opening. Place front foam between the front and lining and then baste the raw edges of the fabric together, keeping the foam free. (See Pic C.)

**5** Place foam back between back and back lining and baste the raw edges of fabric together, keeping the foam free as before. Turn in the seam allowance on the upper edge of the front and back sections, folding in the fullness at the corners. Press and baste in place. (See Pic D.)

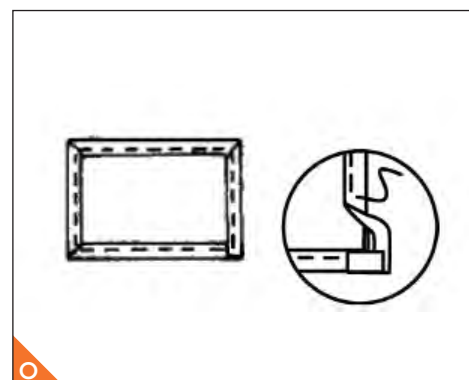
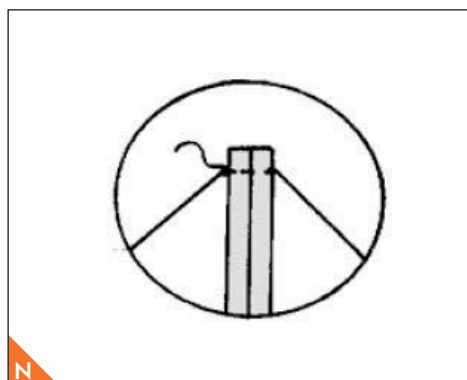
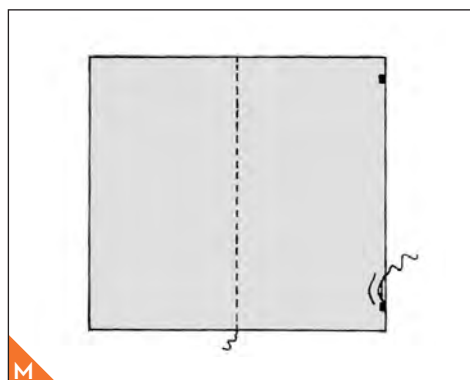
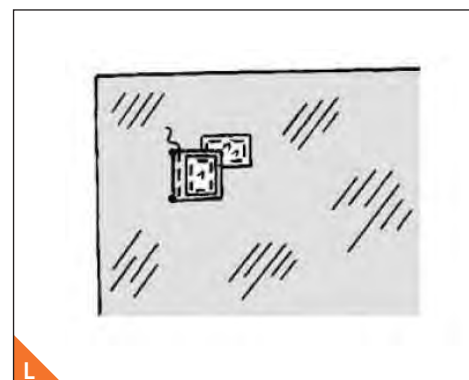
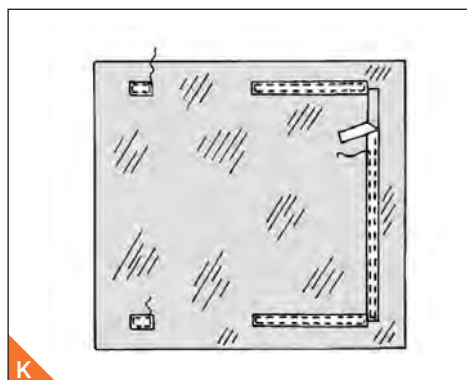
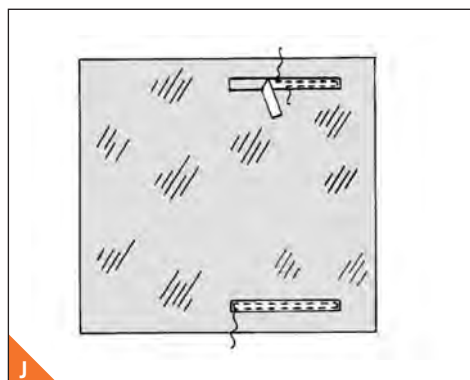
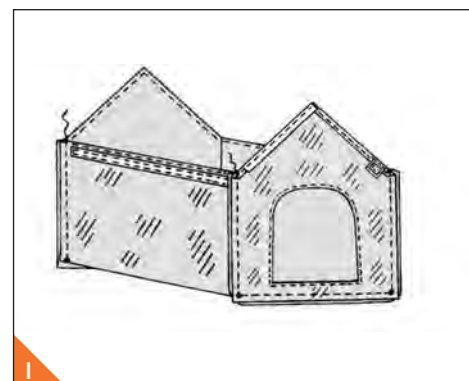
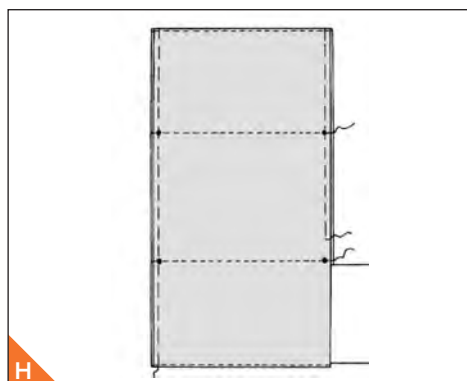
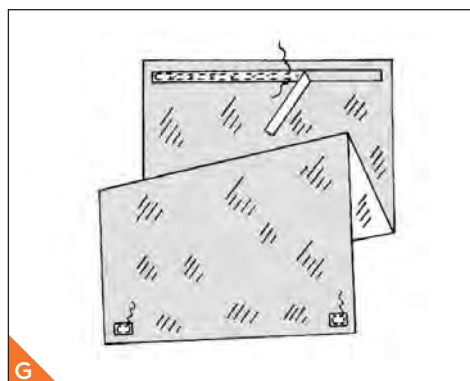
**6** Cut two 22cm-long sections from the soft section of Velcro. On the wrong side, pin one to the upper edge of the front left side between the square markings, placing the Velcro 3mm from the basted/pressed edge. Stitch along the long edge of the

Velcro, continuing down to the end of the sloped section. Pin and stitch the remaining Velcro section to the upper edge of the back in the same manner. (See Pic E.)

**7** Fold each tab rectangle along the fold line with right sides together. Stitch sides in a 6mm seam. Turn right side out and press. Turn 6mm on the upper edge of each tab to the inside and press. Baste the pressed edges together.

**8** Cut four 2.5cm-long sections from the soft section of Velcro. Centre the Velcro over each tab section and stitch in place.

**9** Pin one tab section, Velcro side up, to the upper edge of the front and back sections between the two small circles as shown. Stitch close to the upper edge of the tab. Note that the remaining tab



sections will be used on the roof. (See Pic F.)

**10** For the bottom and side sections, cut a 42cm-long section of soft and stiff Velcro. On the outside, centre the stiff section of Velcro on the placement lines of the bottom lining and stitch in place. (The soft section of Velcro will be used for the top/roof.) Cut two 2.5cm-long sections from stiff Velcro and centre on the bottom of the lining 2cm up and 2cm in from the bottom corners. (See Pic G.)



**11** Pin the bottom lining to the bottom main fabric with right sides together and stitch short ends. Turn right side out. Edge-stitch the end by stitching close to the finished edge or seams.

**12** Stitch along the stitching lines on the bottom and place the side foam sections between the bottom and bottom lining. Base the raw edges together, keeping the foam free. (See Pic H.)

**13** With right sides together, pin the bottom to the sides and lower edge of the front and back, pivoting at the corners. Turn right side out and press. (See Pic I.)

**14** For the roof cut two 22cm-long sections from stiff Velcro. For the roof lining, on the outside, place the Velcro sections within placement lines on one side top and bottom as shown. Stitch close to the long edges. (See Pic J.)

**15** Place the soft section of Velcro cut in Step 12 down the side, 5cm from the edge as shown. Stitch in place.

**16** Cut two more 2.5cm-long sections from stiff Velcro. Position them 7cm from the sides and 4cm from top/bottom in the corners on opposite (left) side and stitch in place. (See Pic K.)

**17** Place the upper edge of the remaining tab sections in the left-hand side corners 5cm from top and side edges as shown. Stitch close to the upper edge of the tabs. (See Pic L.)

**18** Stitch the roof main fabric to the roof lining with right sides

together, leaving an opening in one side of approximately 20cm. Turn right side out, tuck the remaining seam allowance inside and press. Insert the roof foam inside between the lining and main fabric and sew the opening to close. Stitch the top along the stitching line through all thicknesses. (See Pic M.)

**19** Place the roof over the front, back and sides and Velcro them in place.

**20** For the mat, using paper-backed fusible webbing and fabric remnant or felt, prepare and apply the paw appliqué to the corner of one mat section, stitching around the edges to anchor it permanently in place.

**21** Stitch the mat sections right sides together along the sides, leaving an opening in one side of approximately 20cm. Stitch the corners by folding each corner of the mat, matching the seams and stitching across to make small box corners. Turn right side out and press. Insert the mat foam inside the mat and sew opening. Place the mat inside the house. (See Pic N.)

**22** Encase the vinyl window edges with bias tape with the narrower side of the tape on the outside and starting at one corner. Fold in the fullness at the corners, turning under one end under and overlapping the remaining end at the lower corner. Stitch close to the inner edge of tape on the narrow side. (See Pic O.)

**23** Centre the window within the placement lines on the front above the opening and stitch close to the sides and lower edge of the window. ❗

## GET THE LOOK



### The Crafty Spot Pale Blue Poplin Prints

A simple yet lovely 112cm-wide fabric in pale blue high-quality cotton perfect for quilting, craft and dressmaking, approximately 121gsm in weight

£6.95 per metre



### Here Boy Poplin Prints

This fun, colourful 112cm-wide dog print is a great choice for homewares or quirky dressmaking, approximately 121gsm in weight

£6.95 per metre



### Union

Superb 157cm-wide lightweight cotton drill mustard trousering fabric

£6.50 per metre

All available at [www.croftmill.co.uk](http://www.croftmill.co.uk)

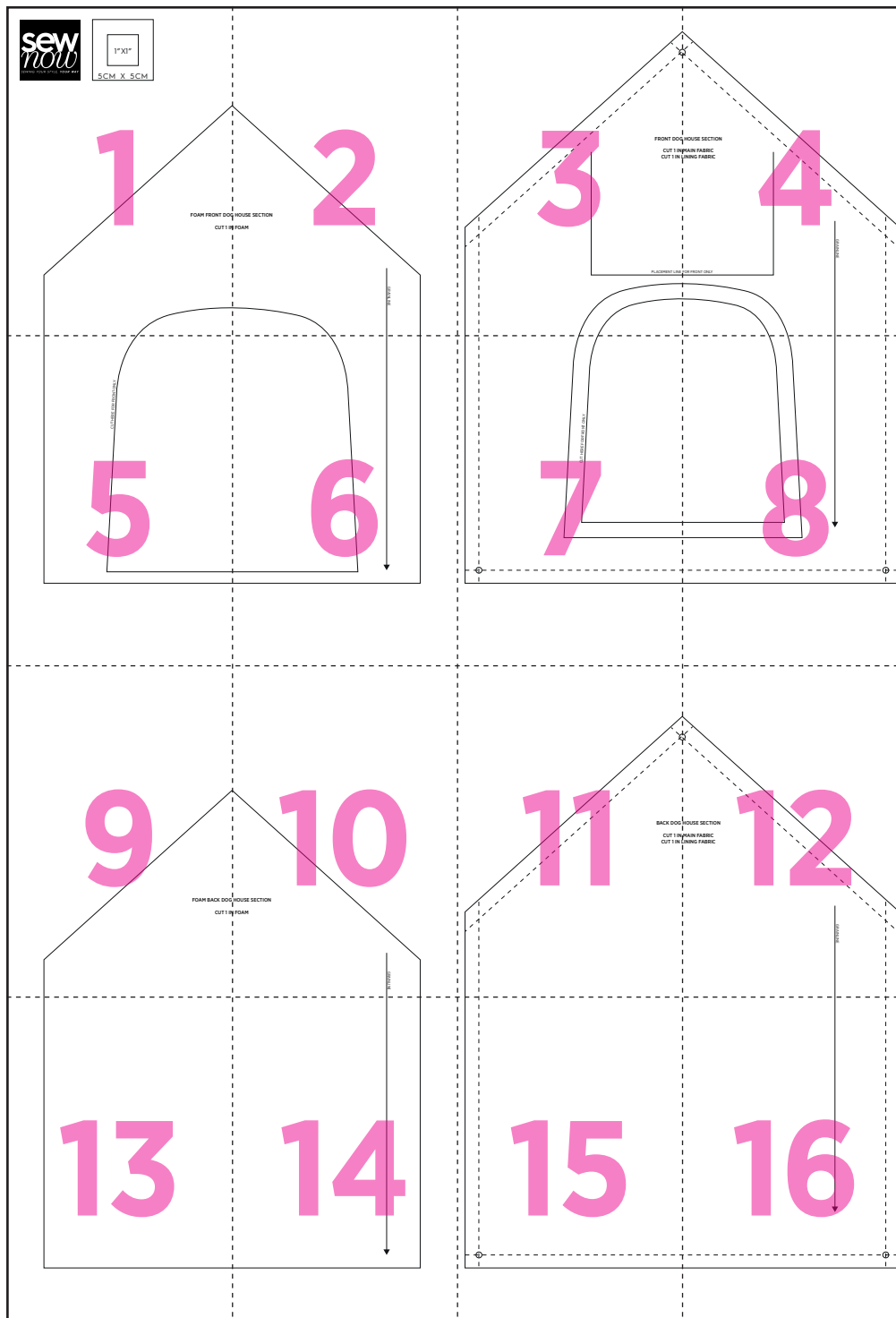


Pellon FF78F1 Flex-Foam fusible wadding

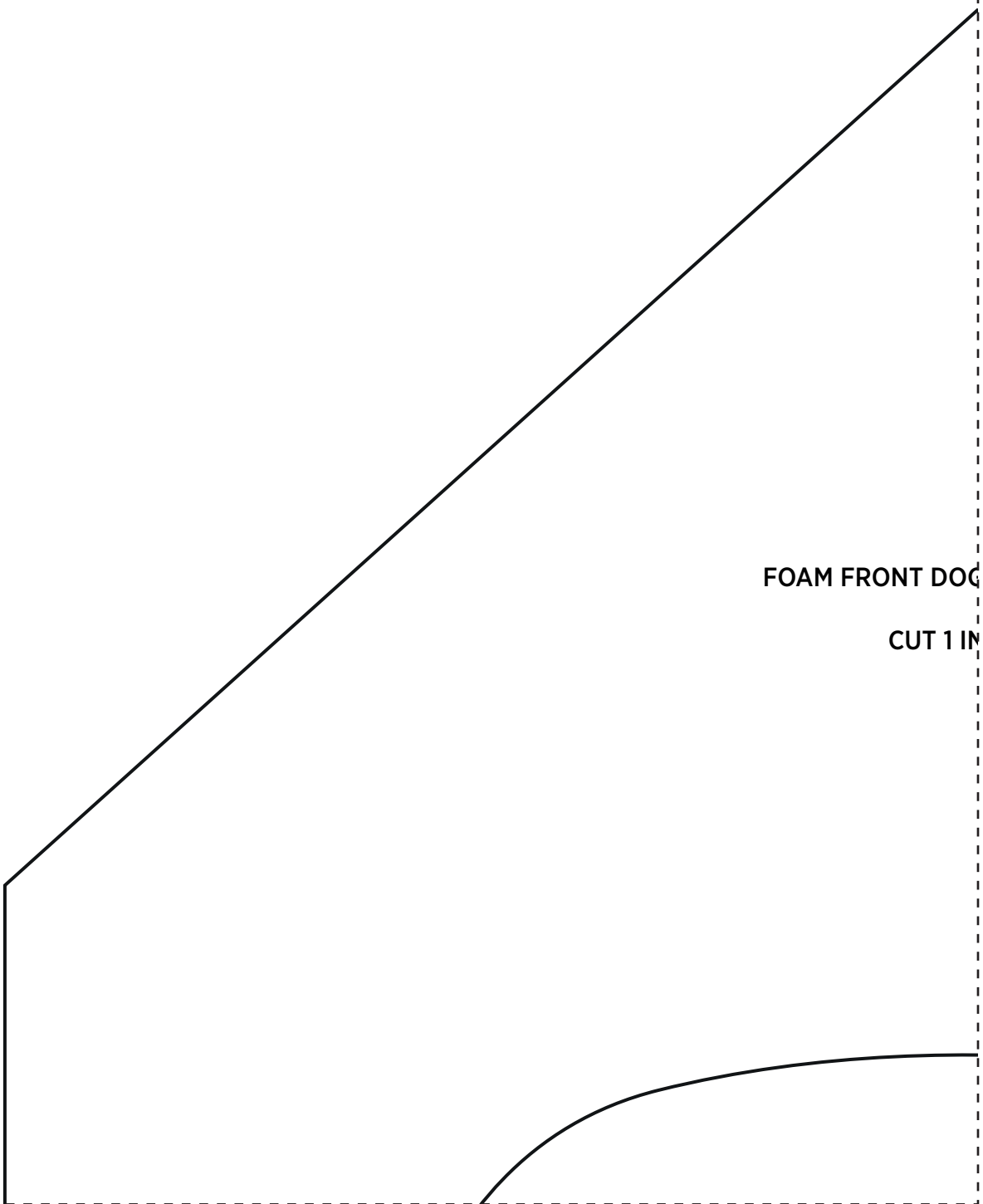
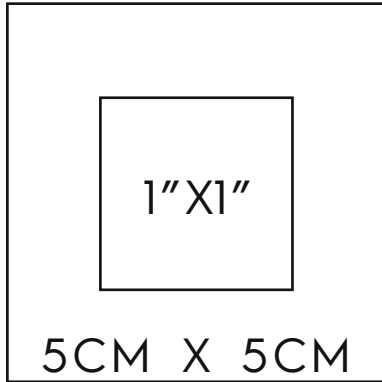
£6.85 per metre

[www.u-handbag.com](http://www.u-handbag.com)

# In the dog house

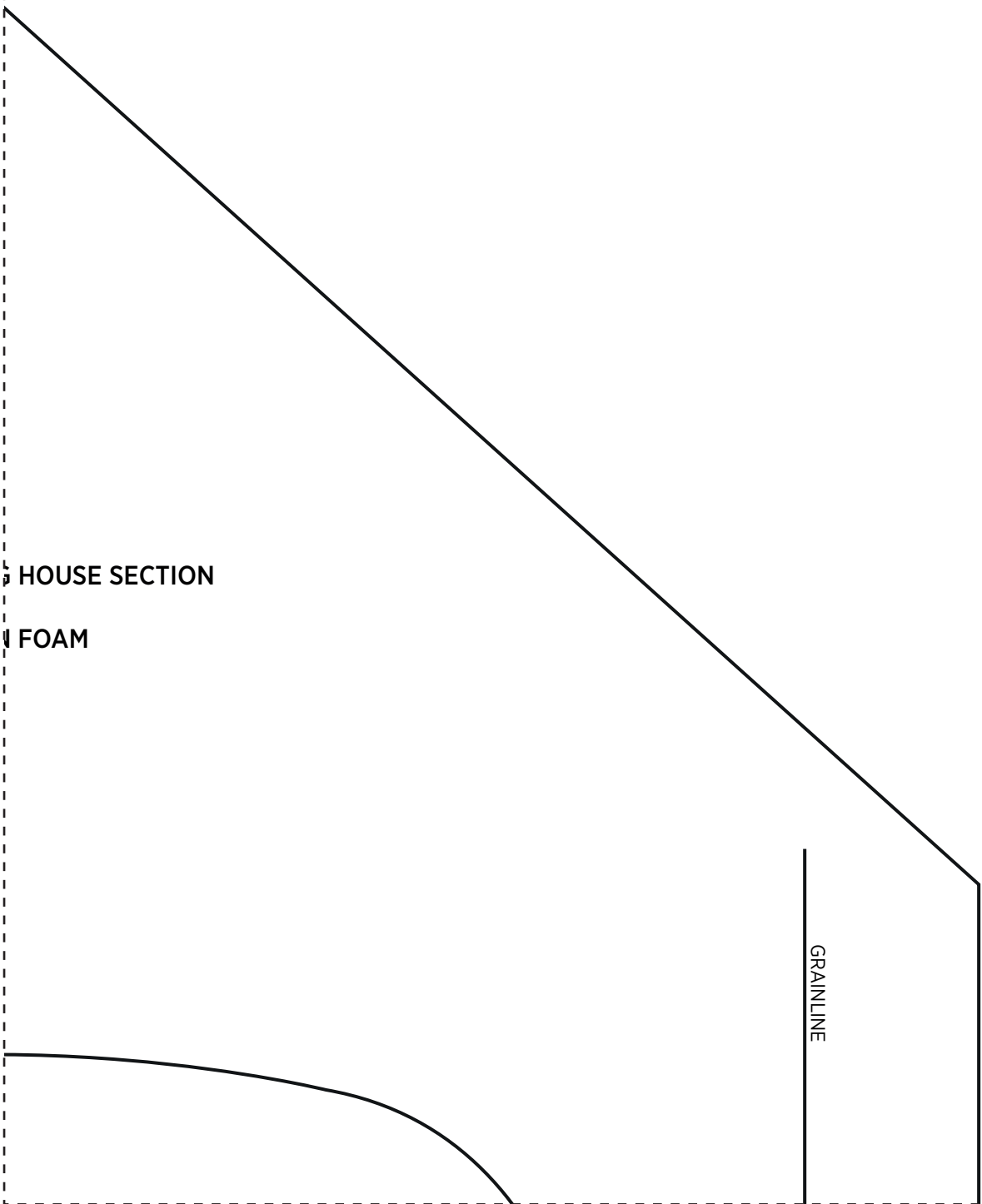


1



FOAM FRONT DOG  
CUT 1 IN

2



HOUSE SECTION

FOAM

GRAINLINE

3



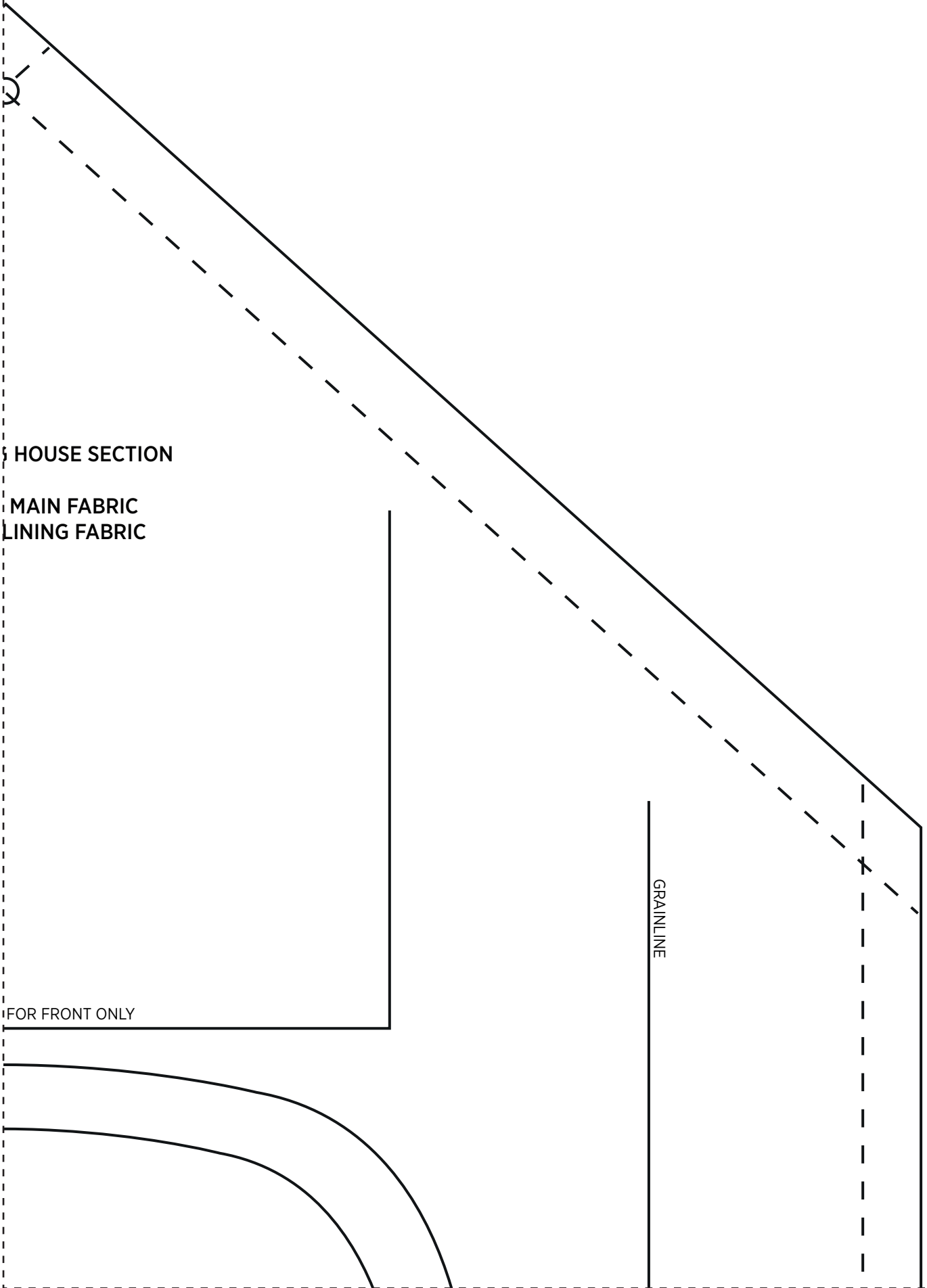
FRONT DOG

CUT 1 IN  
CUT 1 IN

PLACEMENT LINE



4



HOUSE SECTION

MAIN FABRIC  
LINING FABRIC

FOR FRONT ONLY

GRAINLINE

5

CUT HERE FOR FRONT ONLY



6

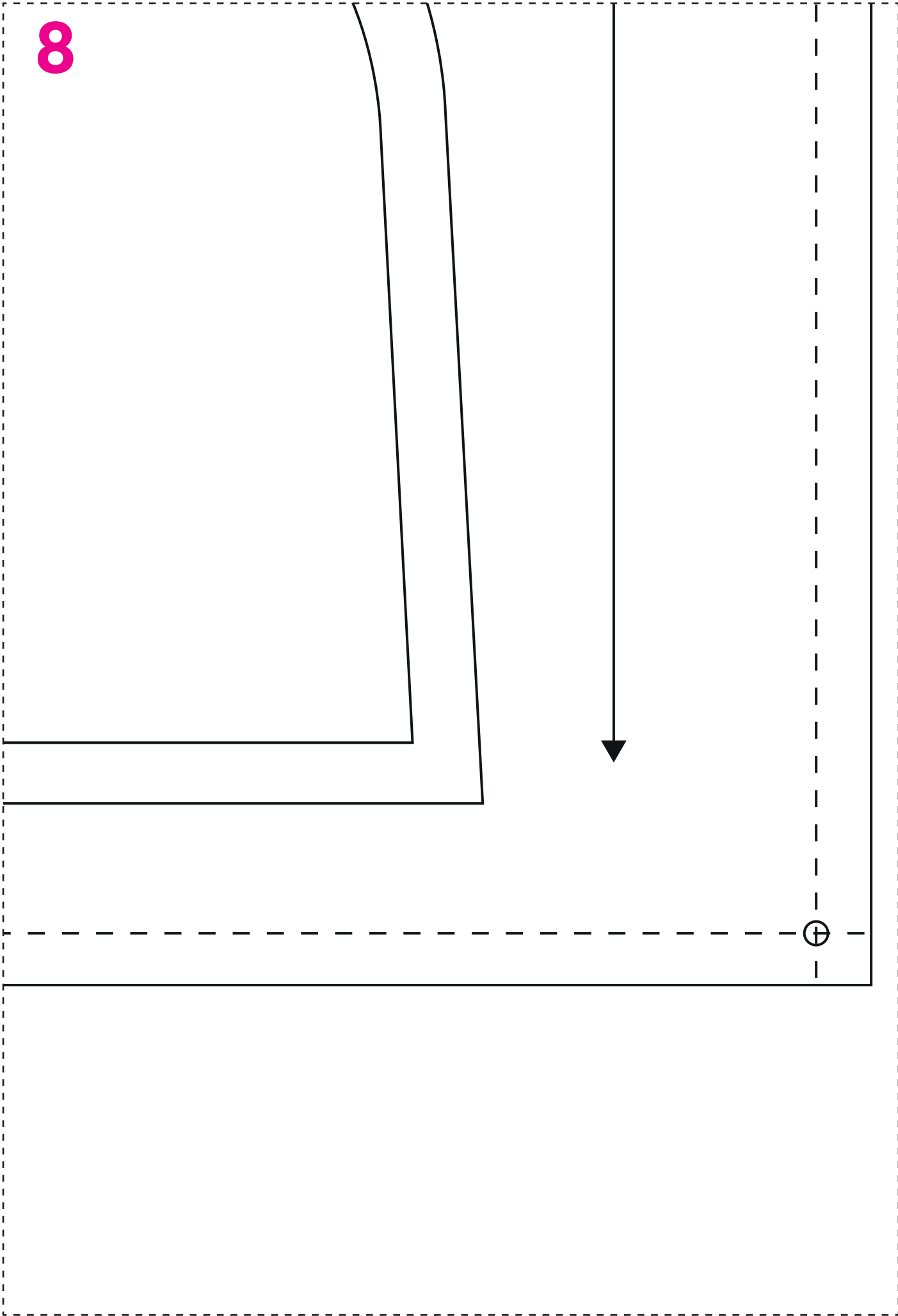


7

CUT HERE FOR FRONT ONLY



8



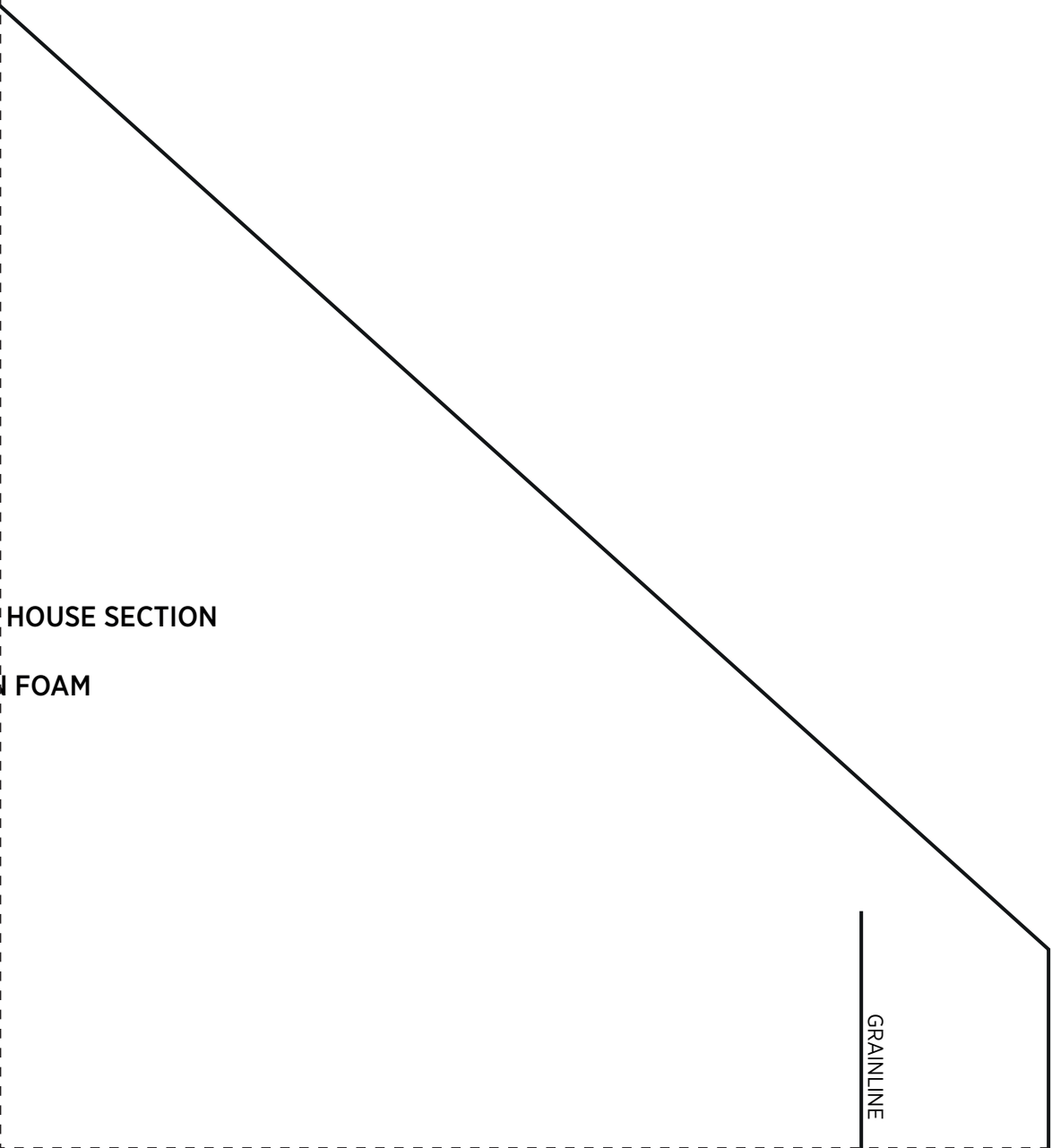
9



FOAM BACK DOG

CUT 1 IN

10



HOUSE SECTION

FOAM

GRAINLINE

11

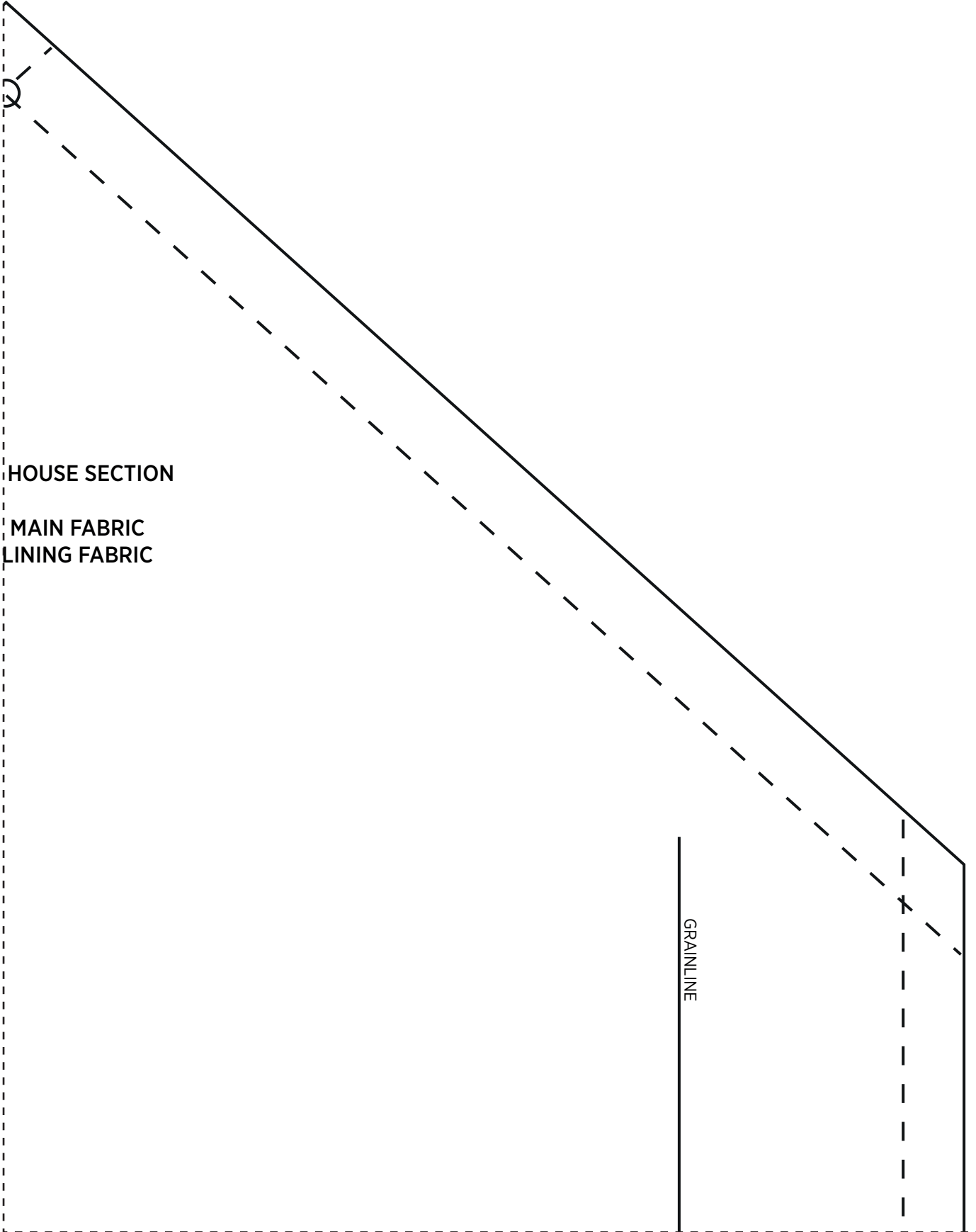


BACK DOG

CUT 1 IN  
CUT 1 IN



# 12



HOUSE SECTION

MAIN FABRIC  
LINING FABRIC

GRAINLINE

13



14



15



16

