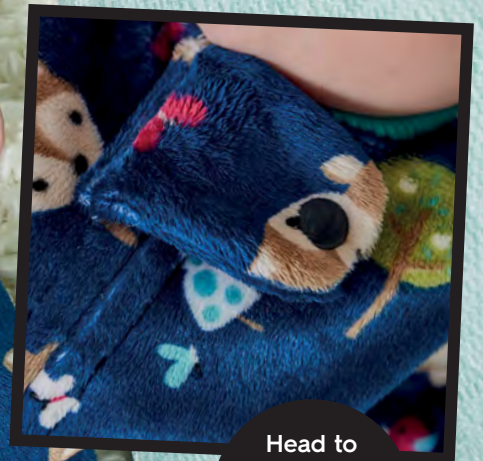


Snuggle SLEEP BAG

DOWNLOAD
YOUR
FREE
TEMPLATE

Make your own baby bunting from Butterick 5583 – a sleeping bag with long sleeves, neck and sleeve cuffs, and drawstring closure at the feet – perfect for snuggly sleep time!



Head to
page 73
win a pair
of Kam
snap pliers



Further information

This has been reproduced from Butterick 5583, which also includes a jumpsuit, shirt, nappy cover, hat, bib, mittens, booties and blanket. It's just one of many crafty patterns from the Butterick range, visit www.sewdirect.com to see more

SKILL LEVEL: Ⓢ Ⓢ Ⓢ Ⓢ

MATERIALS:

- 1.1 – 1.2m 115cm-wide cotton knit or flannelette fabric (or 80cm – 1m 150cm-wide cotton)
- 30cm tubular rib knit fabric for neckband & cuffs
- 45cm zip
- 1.4m 6mm-wide ribbon
- 1cm snap fastener
- free template from www.sewnowmag.co.uk

NOTES:

Seam allowances 15mm unless otherwise stated

FABRIC TYPES:

Cotton knit, flannel or cuddle fleece

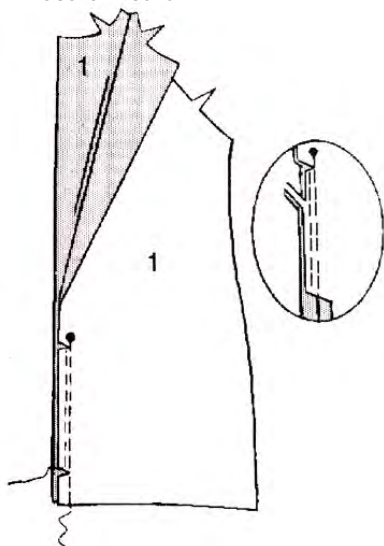
CUTTING:

Fold the main fabric in half with right sides together and cut:

- Piece 1 – Front
- Piece 2 – Tab
- Piece 3 – Sleeve
- Piece 4 – Back

Cut along one fold and open the tubular rib knit fabric ribbing out flat to cut:

- Piece 5 neckband
- 2 x Piece 6 – cuffs



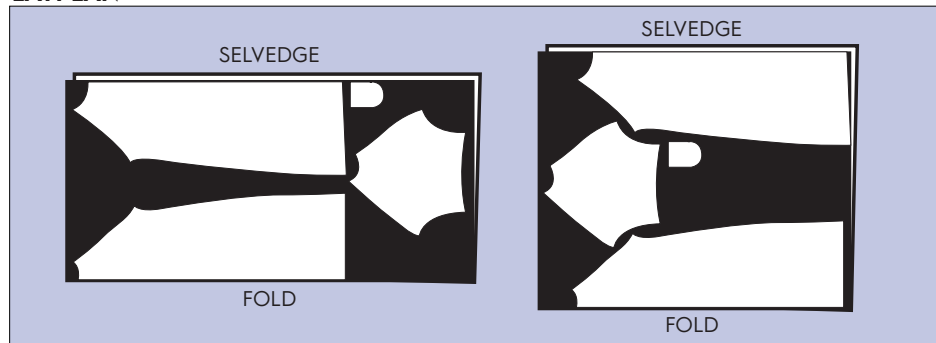
HOW TO MAKE:

1 Stitch the two front pieces together at the centre front, from the bottom edge to the large circle marker, leaving the seams open above the large circle. Clip a notch into the seam allowance just below the large circle by 6mm and again 3.2cm above the lower edge. Then stitch again 6mm away from the first stitching in the seam allowance between the notches. Trim close to the second stitching and press the seam between the clips towards the left front.

SIZING:

Sizes	Newborn	S	M	L	XL
Weight (lbs)	8-12	13-17	18-21	22-25	26-29
Height (inches)	18-24"	25-26"	27-28"	29-30"	31-32"
Weight (kg)	4-6	6-8	8-10	10-11	12-14
Height (cm)	46-61	64-66	69-71	74-74	79-81

LAYPLAN



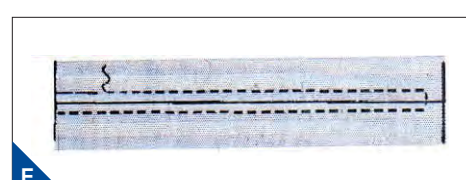
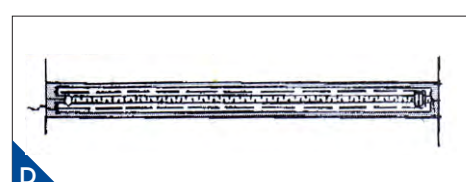
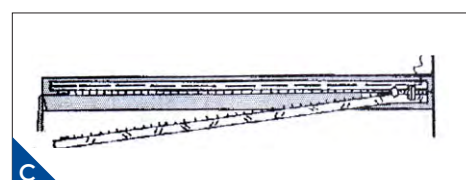
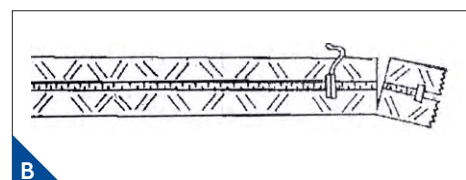
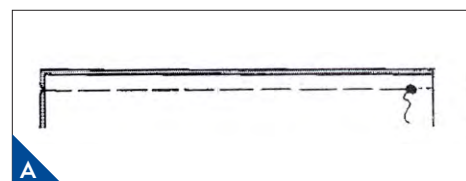
2 Baste the opening edges together along the seam line above the large circle marker and press. Open the zip up to the basted opening in the seam to check the size, with zip pull 3mm below upper seam line. It may be necessary to shorten the zipper. If so, mark a new zipper stop then whip-stitch or hand-stitch across the teeth at the mark. Cut zip 15mm below the new stop. (See pics A and B.)

3 Open out the zip and place face down on the extended seam allowance, placing the zip stop at the large circle and zip teeth on the seam line. Baste in the centre of the zip tape, keeping the garment free. (See pics C and D.)

Transfer pattern markings to the fabric before removing the pattern pieces

4 Close the zipper, turn the pull-tab up and spread the garment flat. Baste a scant 6mm from the zipper teeth and across the lower edge. Then work from the outside stitch along the basting through all thicknesses as shown using a zipper foot. Remove the basting. (See Pic E.)

5 With right sides together, stitch the tab sections together, leaving the straight end with the small circles open. Trim around the curved seam. Turn through, press and baste the raw edges of the opening together.



6 Pin the tab to the right front, placing the seam line along the stitching line and matching the small circles. Stitch along the seam line. Trim the seam allowance to a scant 6mm, being careful not to cut the garment. Turn the tab over the seam allowance and press. Stitch through all thicknesses. (See Pic F)

7 With right sides together, pin the sleeve to the armhole edges of the back and front. Baste and then sew a double-stitched seam by stitching along the seam line and then again 6mm away in the seam allowance using a straight stitch. You can overlock the seam if you prefer. Press the seams towards the front and back. To prevent the neck edge from stretching, stitch around it with a 6mm seam line. (See Pic G.)

8 With wrong sides together, fold the neckband along the fold line and press lightly, taking care not to stretch the rib knit. Pin the raw edges together. Pin the neckband to the neck edge of the garment, keeping raw edges even. Stitch in a 6mm seam, stretching the neckband to fit without distorting the garment. Stitch with the garment against the machine and the band towards you. Stitch again 3mm away from the seam allowance. Press the seam towards the garment. Slip-stitch the ends of the seam to the zip tape. (See Pic H.)

9 Pin the back and front together at the sides and pin the sleeve edges together. Stitch in one continuous double-stitched seam. Press seams towards the back. (See Pic I.)

10 To prevent the lower edge of the sleeve from stretching, stitch a 6mm seam line along the length. Stitch the ends of ribbed cuffs together with a 6mm seam allowance and finger-press the seam. With wrong sides together, fold the cuff along the fold line and press lightly, being careful you don't stretch the rib knit. Pin the raw edges together.

11 Pin the cuff to the sleeve edge and stitch with a 6mm seam allowance, stretching the cuff to fit the sleeve without stretching the garment. Stitch with the garment against the machine and band towards you. Stitch again 3mm away in the seam allowance and then press seam towards the garment. (See Pic J.)

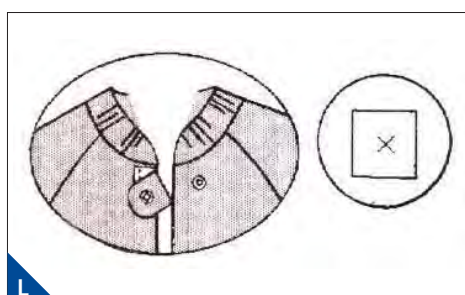
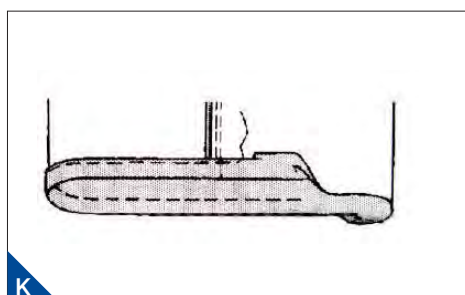
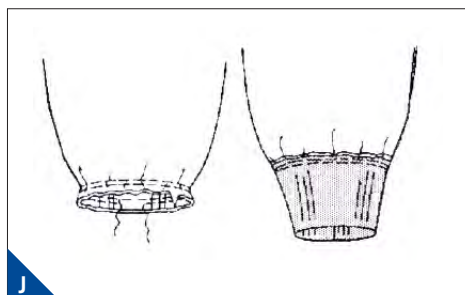
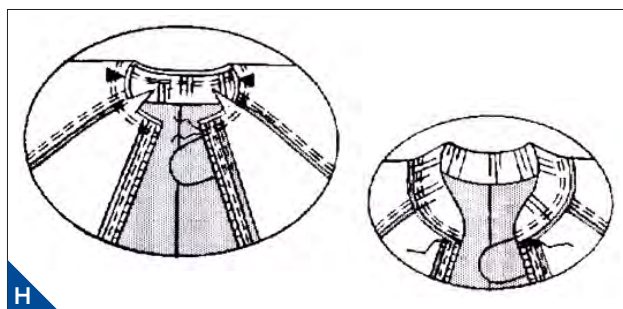
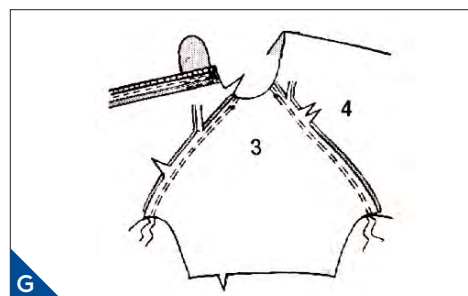
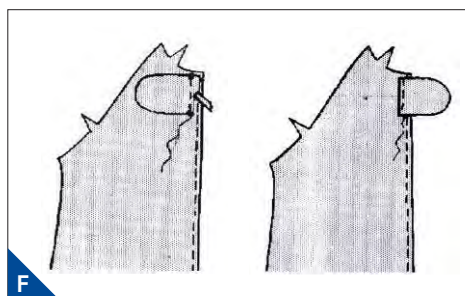
12 Make buttonholes in the front at the markings on each side of the front seam.

13 To form the casing for the drawstring, turn 20mm on lower edge of garment to the inside, turning in 6mm on the raw edge. Stitch close to the pressed edge. (See Pic K.)

14 Cut a 127cm-long piece of ribbon for the drawstring. Insert the ribbon into the casing, keeping the ends evenly through the buttonhole openings. Stitch the

drawstring/ribbon in place across the casing at the centre back so it cannot be pulled out.

15 Apply the socket section of the snap fastener to the left front and the ball section to the tab at the small circle, following the manufacturer's instructions. Reinforce the inside of the socket section side with a small piece of fabric. (See Pic L.)



GET THE LOOK



Midnight Shannon cuddle deer

This cute fabric has a short and very soft directional pile, with a warm, luxurious feel. It has a slight stretch to the fabric, but should not shrink when washed

£19.95 per metre

Aqua Berisfords 1cm-wide double satin ribbon

39p per metre

Ribbed knit cotton elastane

£6.50 per metre

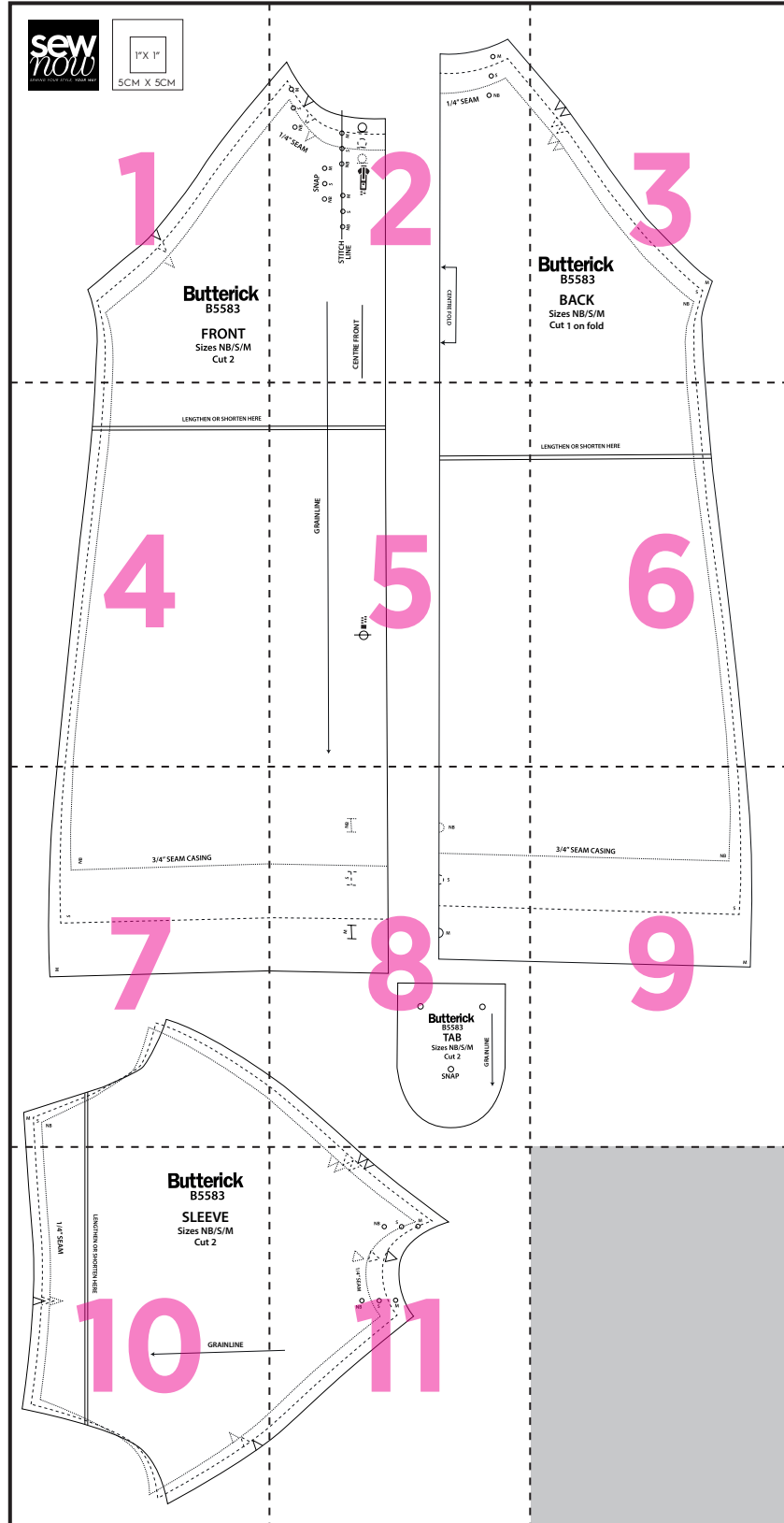


Dark navy size 20 gloss Kam Snaps

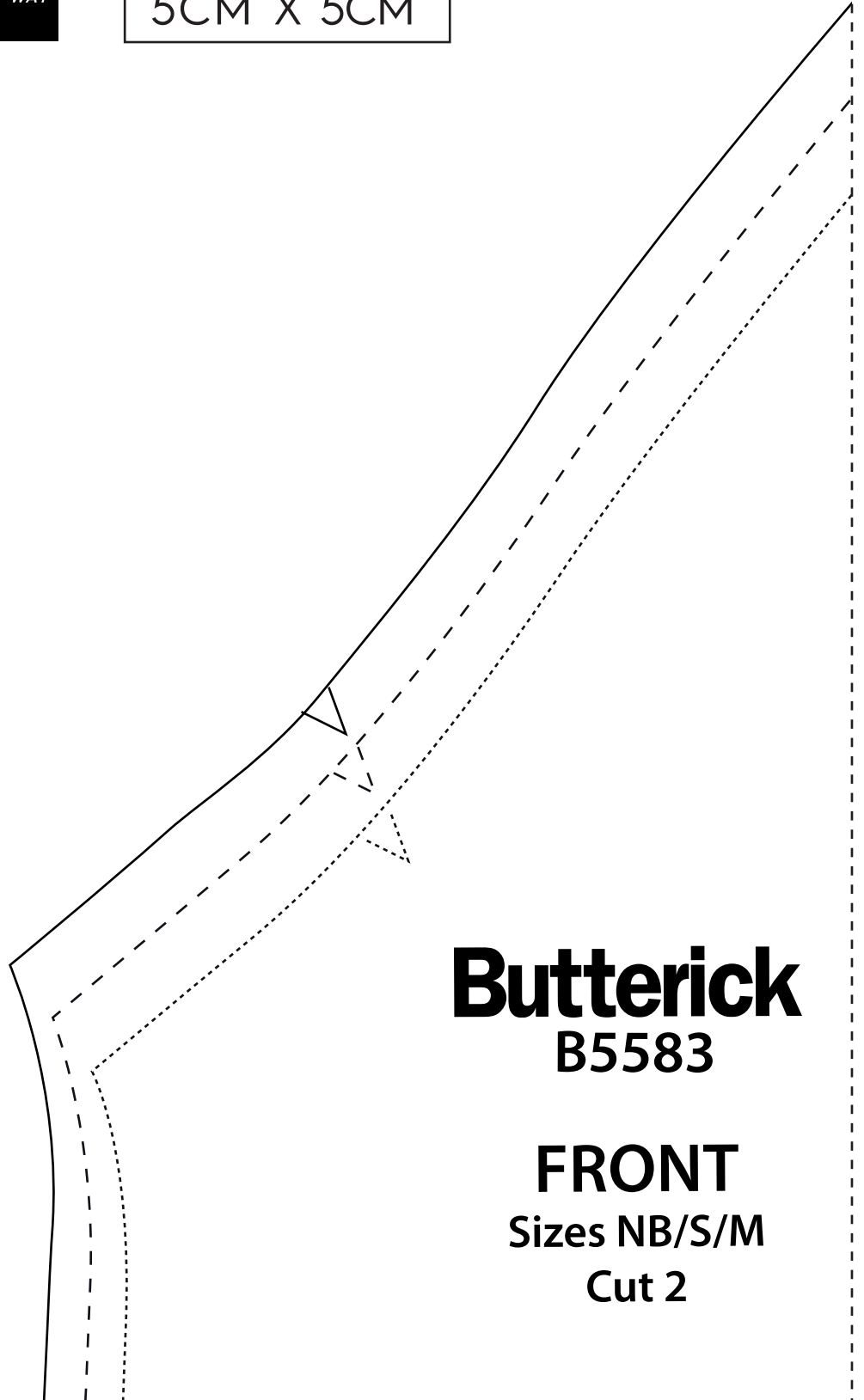
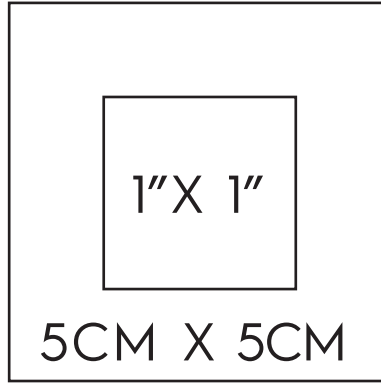
£2.20

All from www.plushaddict.co.uk

Snuggle sleep bag



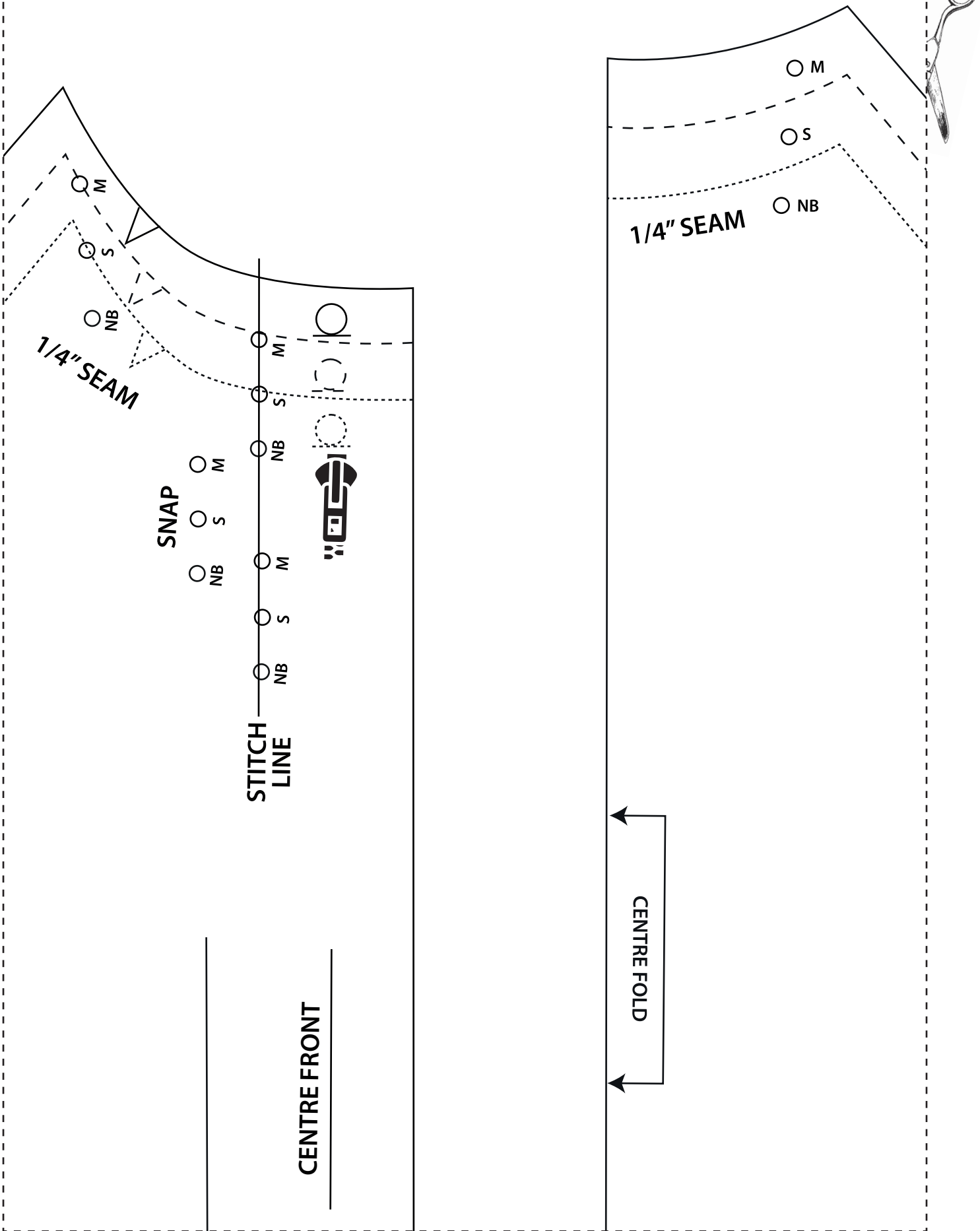
1



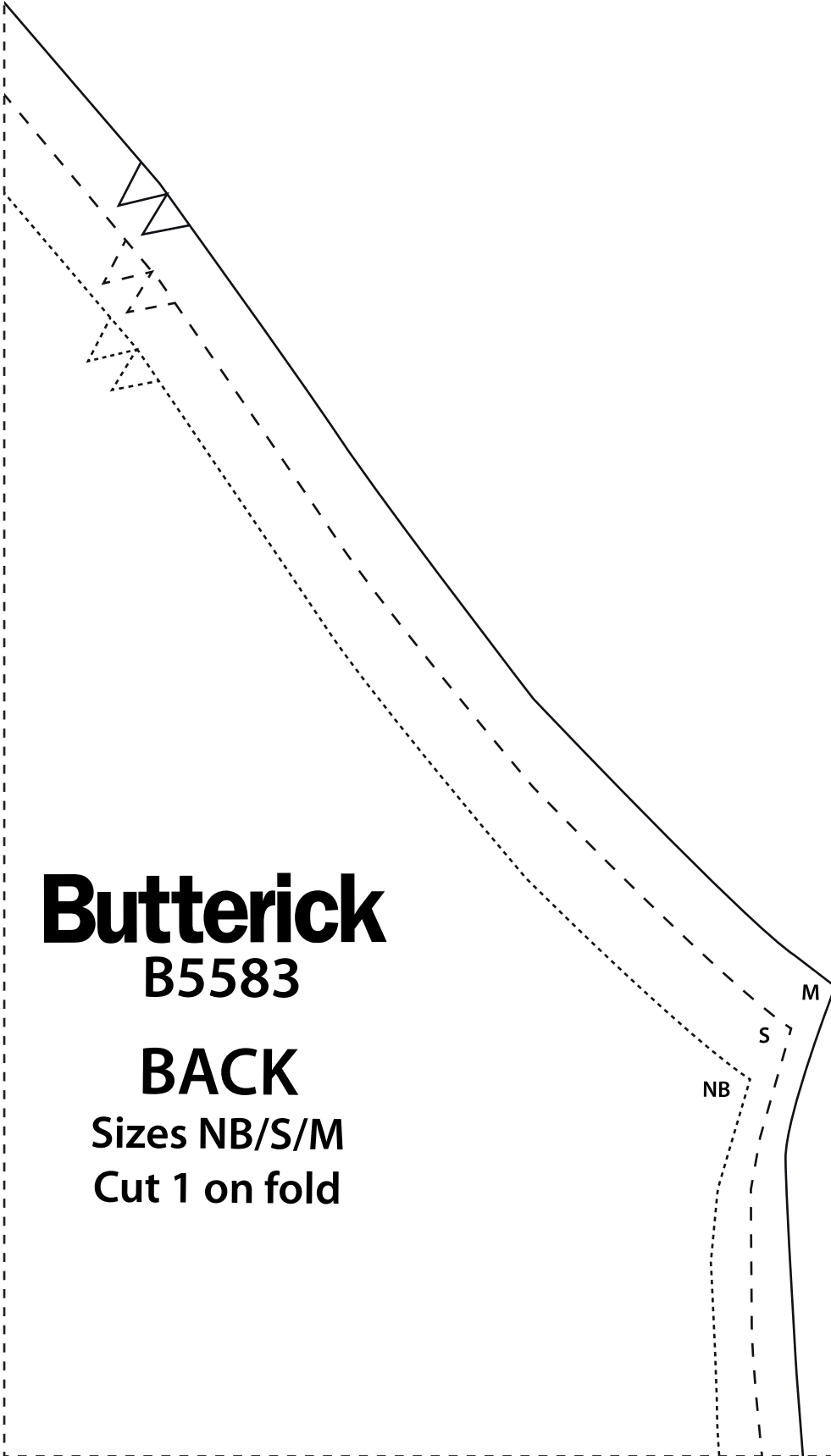
Butterick
B5583

FRONT
Sizes NB/S/M
Cut 2

2



3



Butterick
B5583

BACK
Sizes NB/S/M
Cut 1 on fold

4

LENGTHEN OR SHORTEN HERE



5

GRAINLINE



6

LENGTHEN OR SHORTEN HERE



7



NB

3/4" SEAM CASING

S

M

M

S

NB

8

NB

S

M

NB

S

M



Butterick

B5583

TAB

Sizes NB/S/M

Cut 2

○
SNAP

GRAINLINE



9

3/4" SEAM CASING

NB

S

M



10

Butterick B5583

SLEEVE
Sizes NB/S/M
Cut 2



1/4" SEAM

LENGTHEN OR SHORTEN HERE

GRAINLINE



