

Peasant Blouse

Peasant Blouse

Cast your cares away and dream of other worlds in the Peasant Blouse – a staple for your bohemian but chic wardrobe.

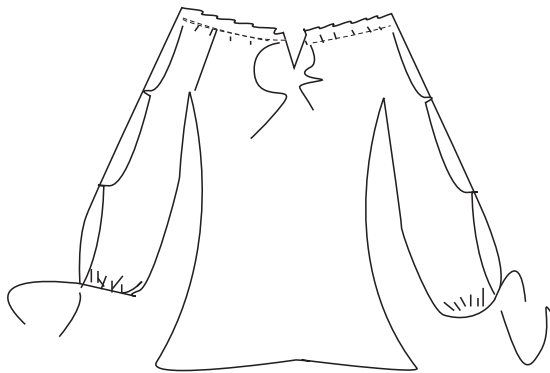
This is the year when we cast our memories back to the hazy summer days of the 70's. Unearthing and breathing fresh life into the beloved era of big hair, free flowing dresses and flowers in our hair—it is the year of boho chic.

Pattern information

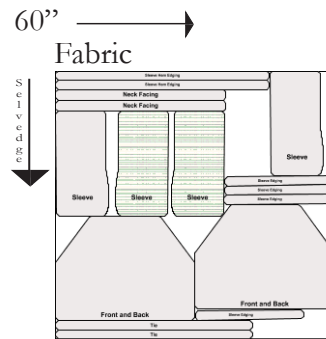
Suggested fabrics: Ideal for lightweight fabrics, chiffons, organzas, cheesecloth.

This pattern is created for You

info@thunderlily.com



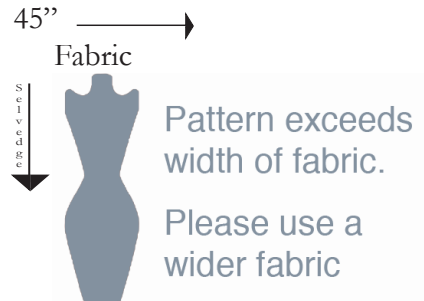
Fabric cutting layout



Fabric requirements

60" 1 3/4yd.

45" N/A



Sewing Instructions

1. Stitch Front and Back sections together at sides leaving open at sides above the large circle. Press flat.
2. Snip center front line between small circles.
3. Roll over edges and handsew them with a binding stitch.

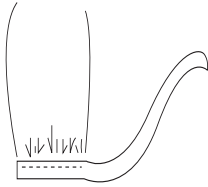
Sleeves

4. With right sides together, sew inside seam of each sleeve, leaving open above large circles at top.
5. With right sides together, Pin Sleeve Edging to outer sleeve edges, matching small circles. Sew. Fold Edging to inside of sleeve and press, so that 3/8" (1cm) is visible. Fold under remaining seam allowance and stitch in place.
6. Using small circles as guides, handstitch sleeves together at circles.

7. Use sewing machine to make a gathering stitch around hem of sleeves.



8. Turn right sides together of Cuff Edging and sew ends then edge between small circles. Sew. Fold Edging to inside of sleeve and press, so that 3/8" (1cm) is visible. Fold under remaining seam allowance and stitch in place.



9. Finish ends of tie

Attaching Sleeves

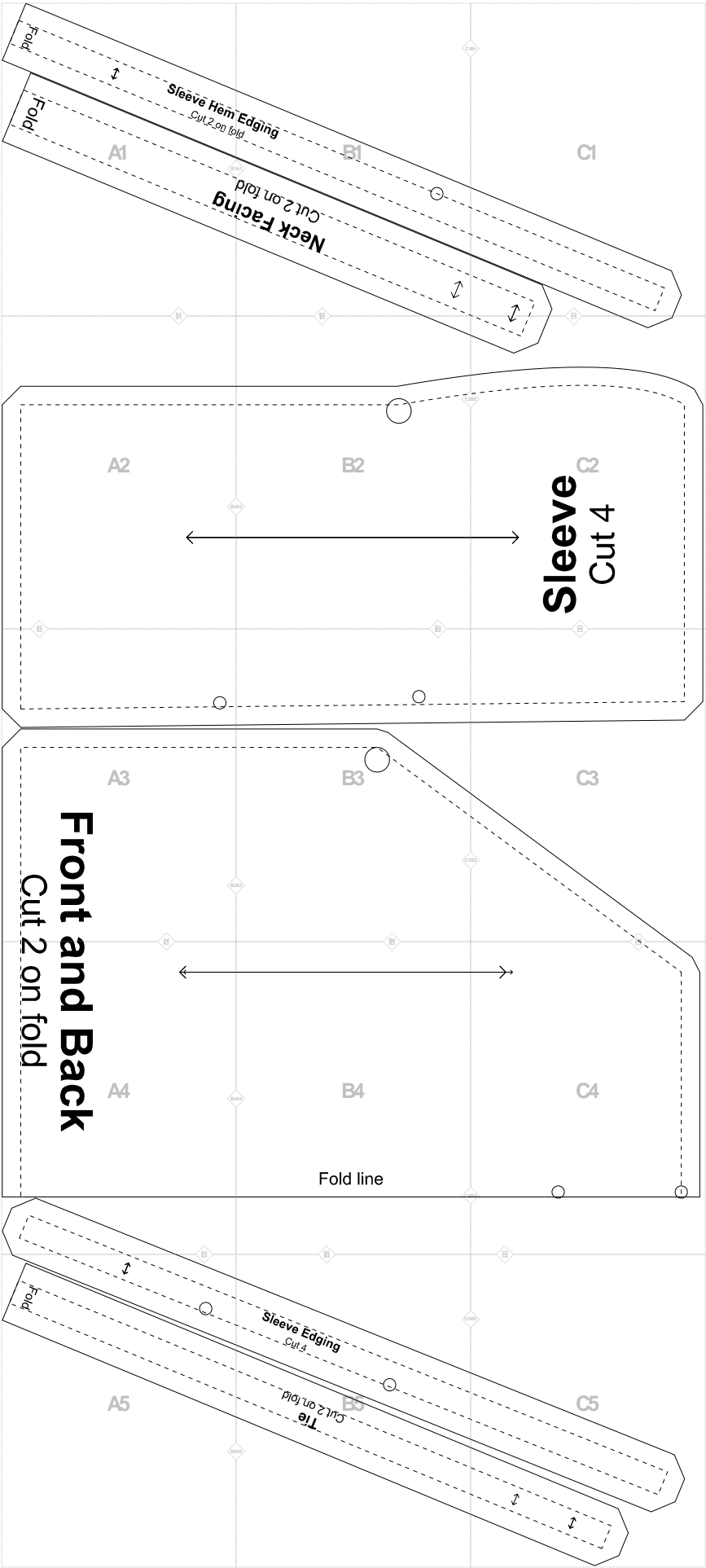
10. Pin sleeves to Front and Back sections, matching side seams and large circles. Sew.

Facing

11. With right sides together place facing around top of blouse and sleeves. Start and end at center front opening. Sew. Press.
12. Fold towards inside of blouse along seam line and press. Fold under seam allowance of facing and hand stitch on inside of blouse. Leave center front edges open.

Finishing

13. Take Tie sections and sew each of them along seam allowance. Trim seam allowance to avoid bulk. Use a safety pin or hair pin to turn it the right way through. Handstitch edges closed.
14. Thread one tie through top Facing. Cut second Tie in half, finish edges and thread through Sleeve Cuff Facings.
15. Hand roll hem and use a binding stitch to hold in place.



Fold



Sleeve Hem

Cut 2 on fo

Fold

A1

THUNDERLIDY

B1

bu

A2

Edging

Id

B1

THUNDERLION

C1



Cut 2 on fold

Neck Faci



B2

B1

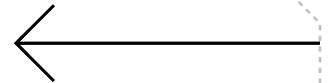
C1
THUNDERLION

C2

A1

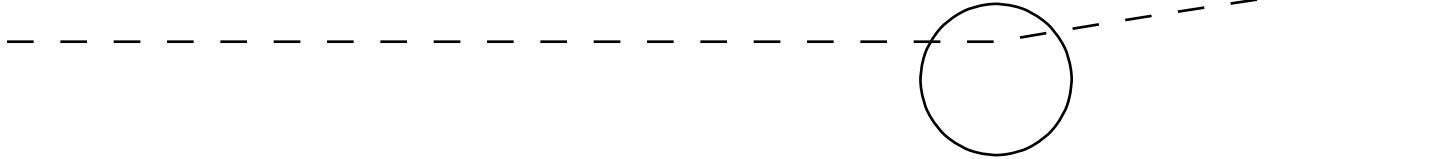
A2
THUNDERLION

B2



A3

B1



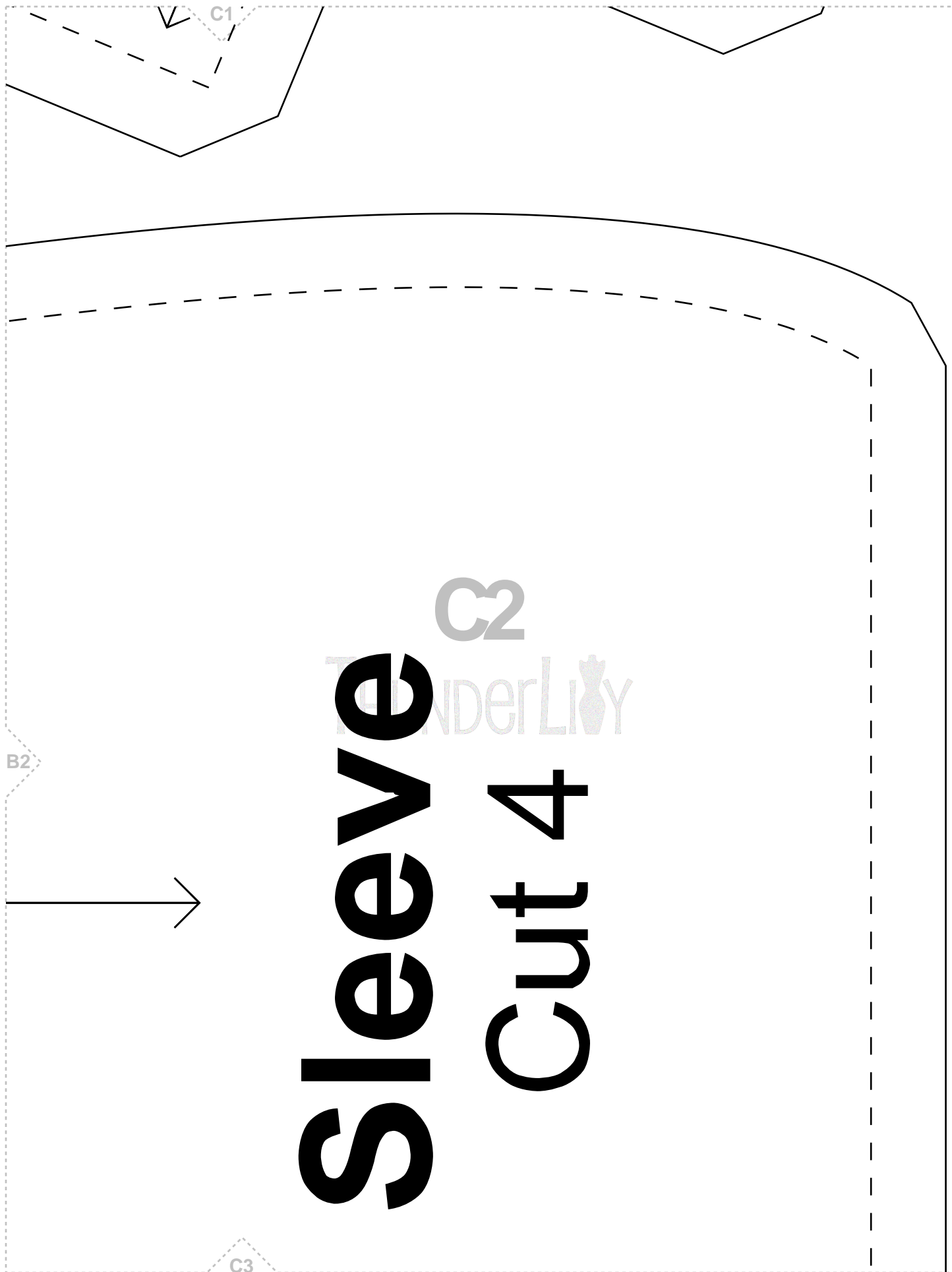
B2

THUNDERLION

C2

A2

B3



sleeve Cut 4

C2

Tender Lily

B2

C1

C3

A2



A3

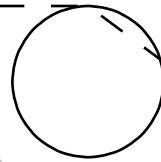
THUNDERLION

Front
Cut

B3

B2

C3



B3

THUNDERLION

A3

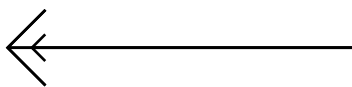
B4

C2

B3

C3
THUNDERLION

C4

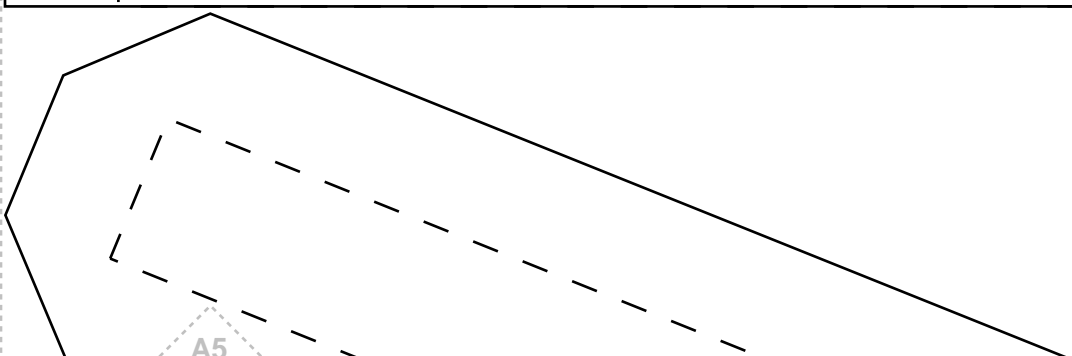


and Back 2 on fold

A4

THUNDERLION

B4



A5

B3

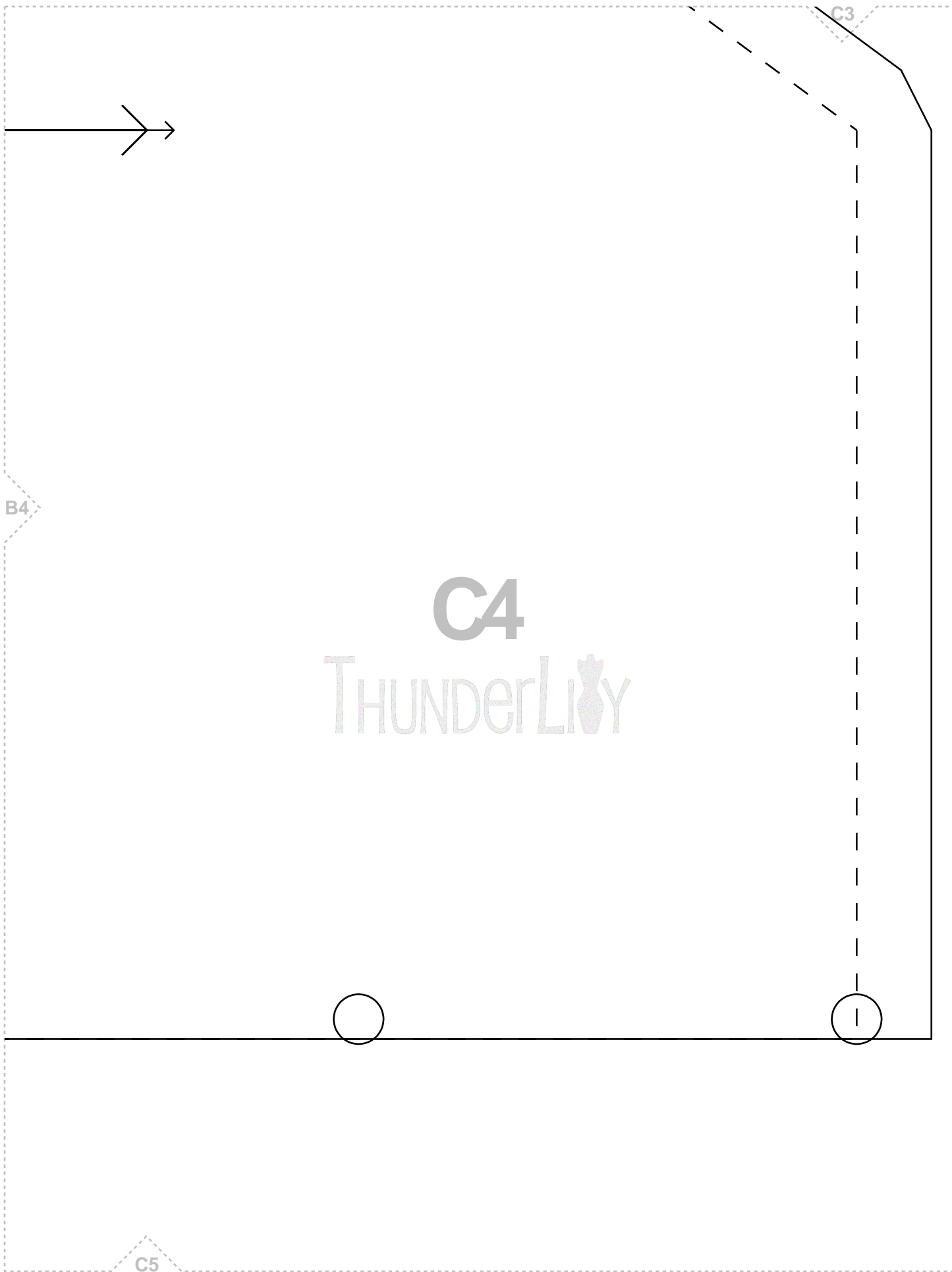
C4

B4
THUNDERLION

Fold line

A4

B5



A4



Fold



B5

A5
THUNDERLION

B4

C5

Sleeve Edging

Cut 4



Cut 2 on fold

Tie

B5

THUNDERLIVY

A5

C4

B5

C5

THUNDERLION

