

Essentials

- Red and blue patchwork prints, 50cm of each
- Cream floral print, 25cm
- Five coordinating prints, 25cm square
- Wadding
- Brass bag clasp, 1.8cm
- Antique brass purse frame, 1.1cm
- Narrow green ric rac
- Fusible interfacing
- Red embroidery thread
- Blue button

Dimensions

Bag: 30cm x 32cm (excluding handles)

Purse: 13cm x 14cm

patchwork bag & purse

Exude country style with this pretty set

This charming set is perfect for packing your essentials for a summer picnic. Designer Ellen Kharade has chosen whimsical floral fabrics to stitch a padded tote with a heart-shaped reverse appliqué detail, and a quilted patchwork purse with an attractive antique brass clasp.

stitch a tote bag

1 Go to www.sewmag.co.uk and download the templates for the bag and heart motif. Print and cut them out. Mark a variety of different fabric prints until you end up with 25, 5cm squares.

2 Place the fabric prints onto a cutting mat and accurately cut out the squares using a rotary cutter and quilter's rule. With right sides facing, and using a 7mm seam allowance, machine stitch two squares together. Continue until you have five strips each containing five squares. Open up the seams and iron flat.

3 With right sides facing, pin two strips together and machine stitch, matching up the seams as you do so. Continue sewing together the remaining strips in the same way to make a block of patchwork, and press all seams open.

4 Cut a 22.5cm x 40cm rectangle from cream floral fabric, and two 27cm x 40cm rectangles from blue patchwork print. Pin the long edges of the cream fabric and the blue design together, and machine stitch using a 1cm seam allowance. Repeat by sewing the remaining blue piece to the other edge of the cream fabric and press all seams open.

5 Fold the resulting fabric piece in half widthways. Place the template on top with the fold line as indicated. Pin together, matching up the fabric change as indicated on the template, and cut out the shape.

6 Apply a little adhesive to the heart aperture template and centre it on the back of one of the blue bag sections. Measuring 1cm in from the edge of the shape, draw a smaller heart on the back of the template. Cut out the centre of the heart up to the newly drawn line.

7 Using small embroidery scissors, clip away the seam allowance around the heart in small notches. Clip up to the paper template and press the notches flat against it. Remove the template and iron on both sides to achieve a crisp heart shape.

8 Place the patchwork square behind the heart aperture and pin into place. Using small stitches, sew around the shape to secure the piece into position. Press and trim the excess patchwork from the back of the work. Using three strands of embroidery thread, work blanket stitch around the aperture of the



heart. Hand sew ric rac around the outer edge of the blanket stitch and sew a blue button to the top of the motif.

9 Cut wadding 1cm smaller than the overall size of the bag template. Using large stitches and a contrasting thread, tack the wadding to the wrong side of the bag. Divide the bag into vertical 4cm divisions using an erasable pen and machine stitch down the length of each to quilt. Unpick the tacking stitches. Fold the bag in half with right sides together and stitch up the sides. Fold the open

corners at the base of the bag to make a gusset, pin and machine stitch.

10 Cut two 8cm x 48cm strips of blue fabric. This will give finished handles measuring 3cm x 45cm long. You can make them shorter or longer if you wish. Iron a strip of interfacing to the back. Fold and press a 1cm hem down both long edges, then fold in half down the centre. Pin together and stitch.

11 Make a second handle in the same way. Fold over a 1cm hem at the top of the bag and press. Pin the handles to the inside of the

bag and edge stitch all around the top. Pin red patchwork print fabric to the bag template and cut one on the fold for the lining. Fold and press a 1cm hem at the top edge of the bag.

12 Iron a 5cm square of interfacing to the inside centre back and front of the lining to give extra stability to the clasp. With right sides of the fabric facing, place a washer in position where the clasp is to be fitted and mark with a pencil. Using a scalpel, carefully make a slit at the pencil marks through both pieces of fabric.

13 From the right side, push the clasp through the slits in the front piece and fold down the prongs. Attach the other part in the same way. Sew up the sides of the lining, then the gusset as for the bag. Push the lining into the bag, wrong sides together, Pin and hand sew into place using neat whip stitches.

make a purse

1 Cut 40, 5cm squares from various fabric prints and stitch together in five rows of eight. Pin the template for the purse to the patchwork piece and cut out the shape. Trim wadding 1cm smaller than the template and tack it to the back of the patchwork piece.

2 Quilt diagonal lines through the layers and unpick the tacking stitches. With right sides facing, machine stitch the sides of the purse to where the purse frame starts as indicated on the pattern. Then sew the gusset.

3 Pin the template to lining fabric, and cut out the shape. Sew up the lining as for the main body. Push the lining into the purse and tack both sections together at the curve with running stitches.

4 Push one half of the patchwork into the purse frame and using two strands of embroidery thread, sew the fabric in place. Stitch the other side of the patchwork into the frame in the same way to finish.

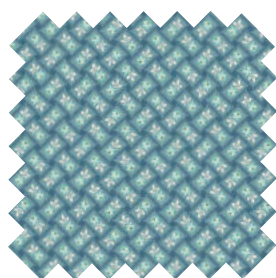
all sewn up!

The heart motif and purse is perfect for using up remnants of fabric from your sewing box.



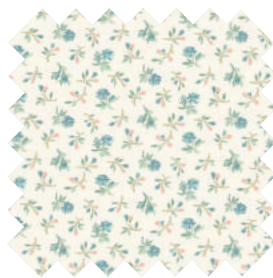
Playsuit, £12.99, H&M

the haberdashery



Blue ribbon roses

A charming patchwork design.



Blue roses on cream

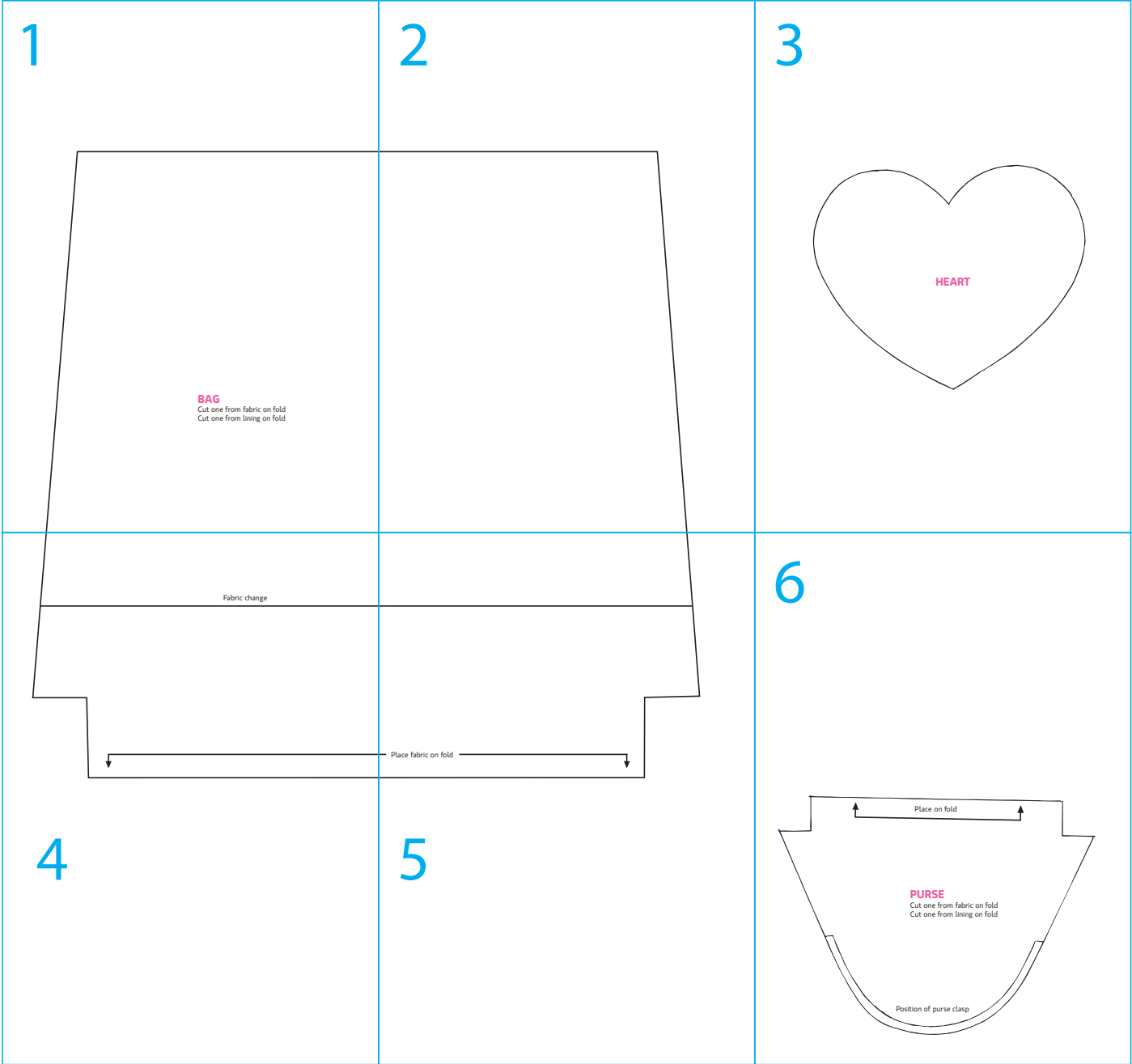
Perfect for a country home.



Large floral on red

A bold floral in red.

For a country chic feel, we used the For Your Love range by Renee Nanneman for Makower UK. For stockists, visit www.makoweruk.com, 01491 579227.



1

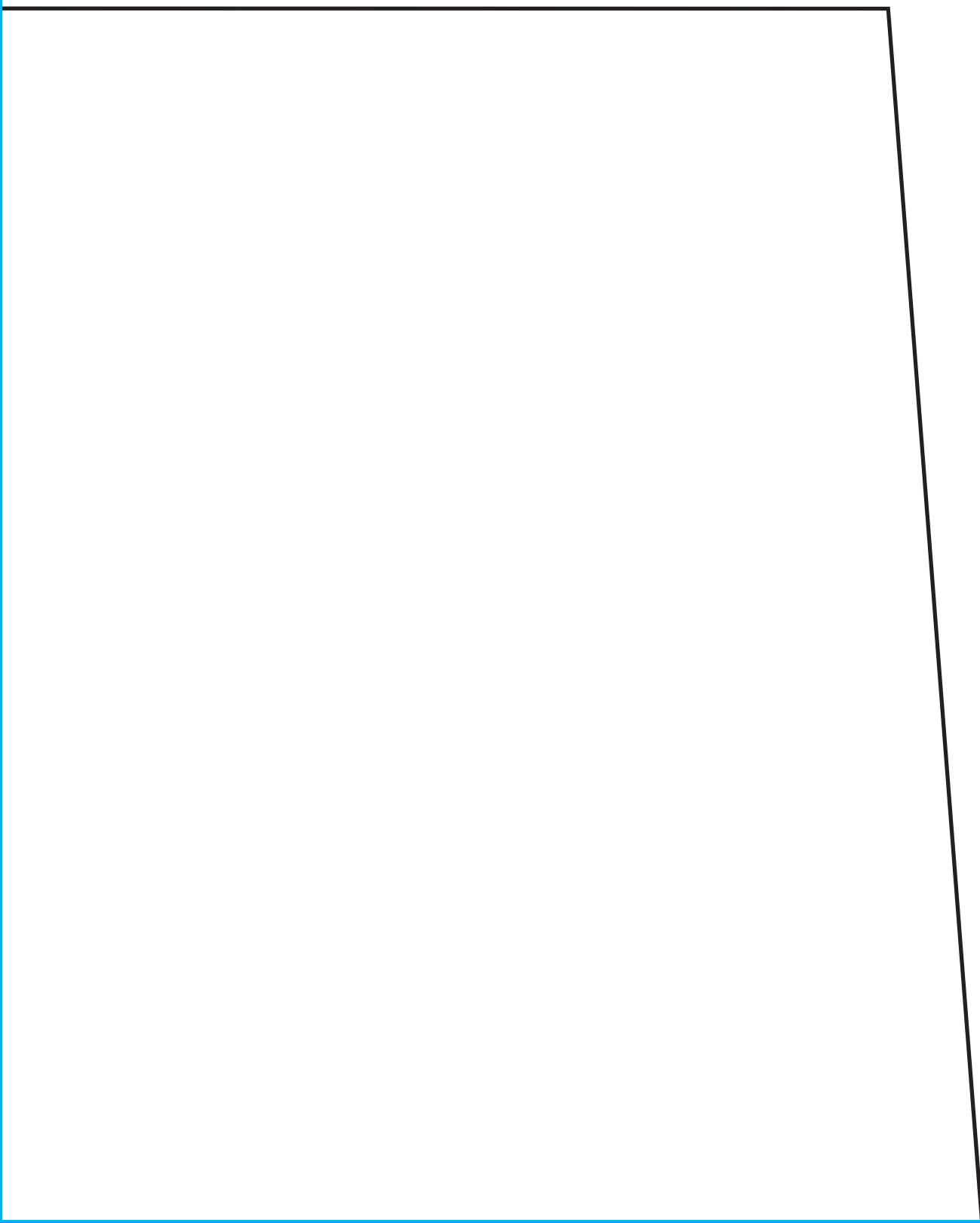


BAG

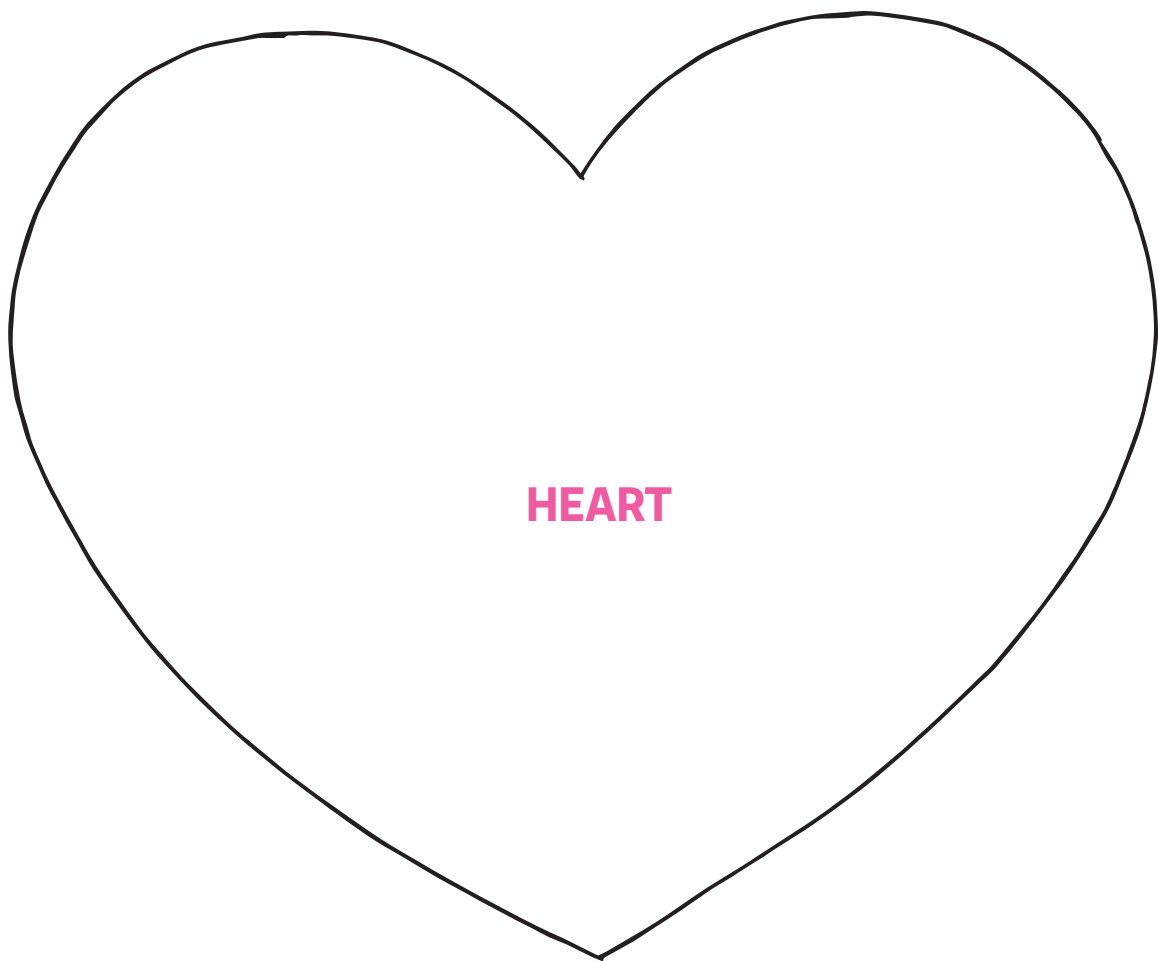
Cut one from fabric on fold

Cut one from lining on fold

2



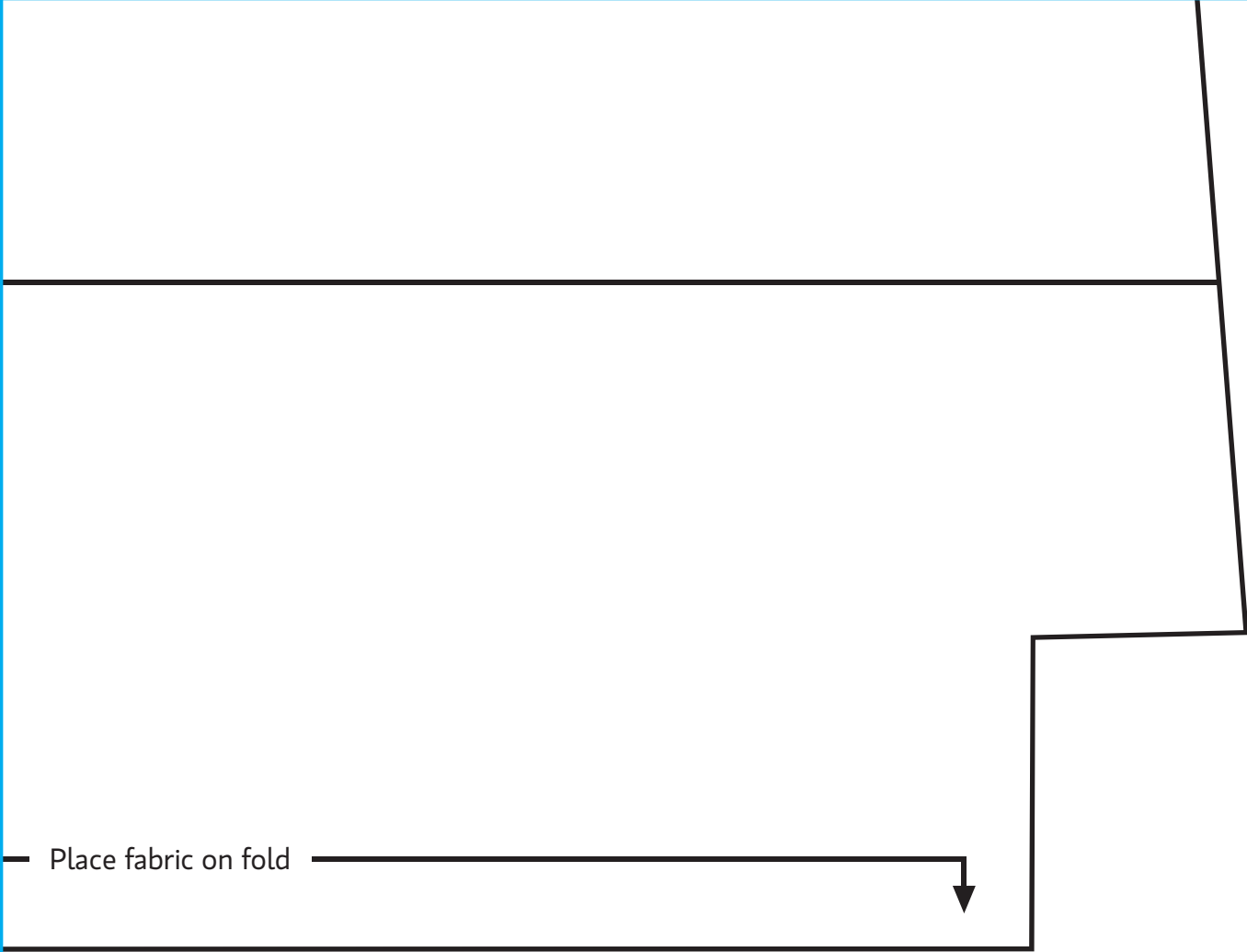
3



Fabric change



4



5

6

