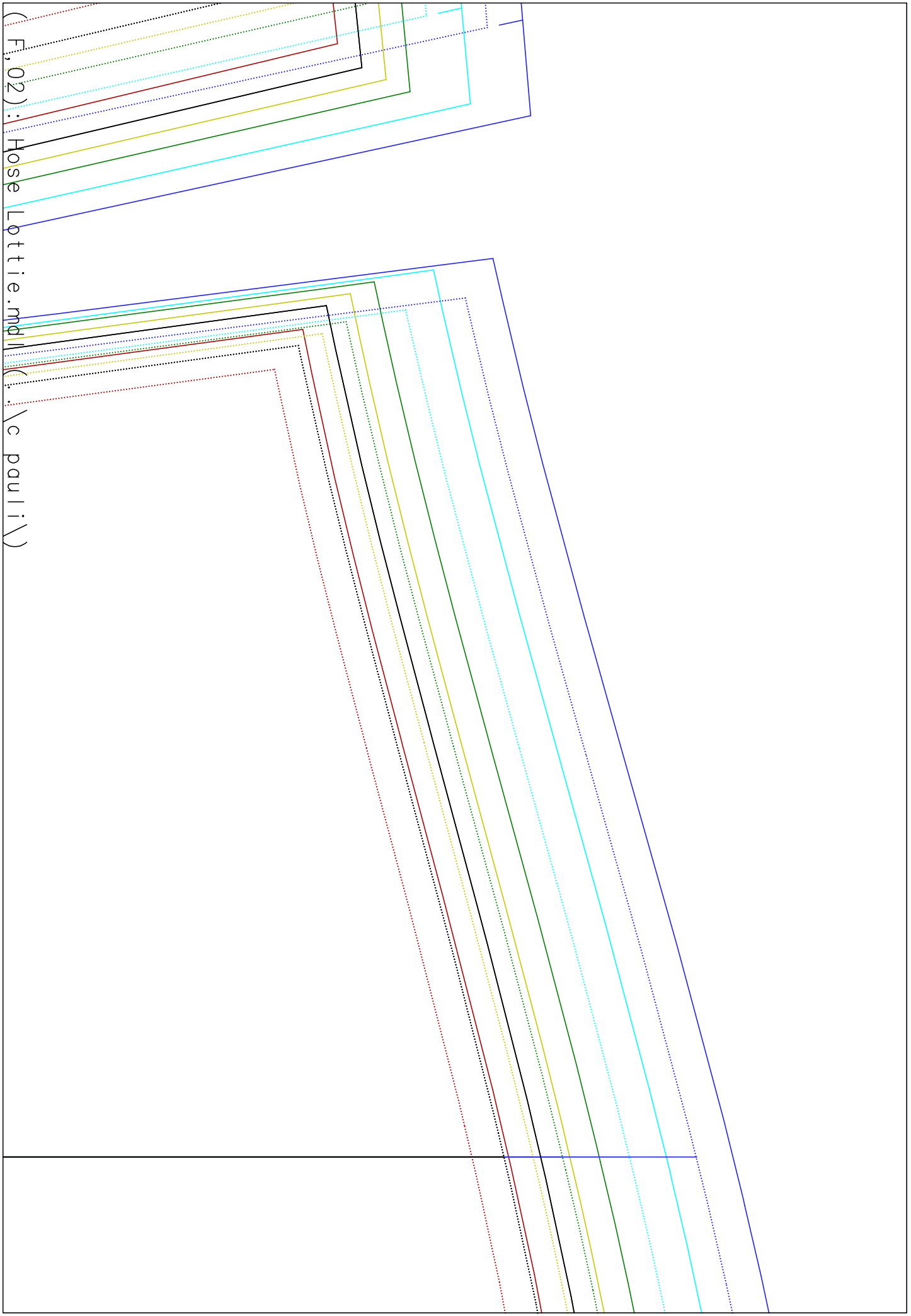
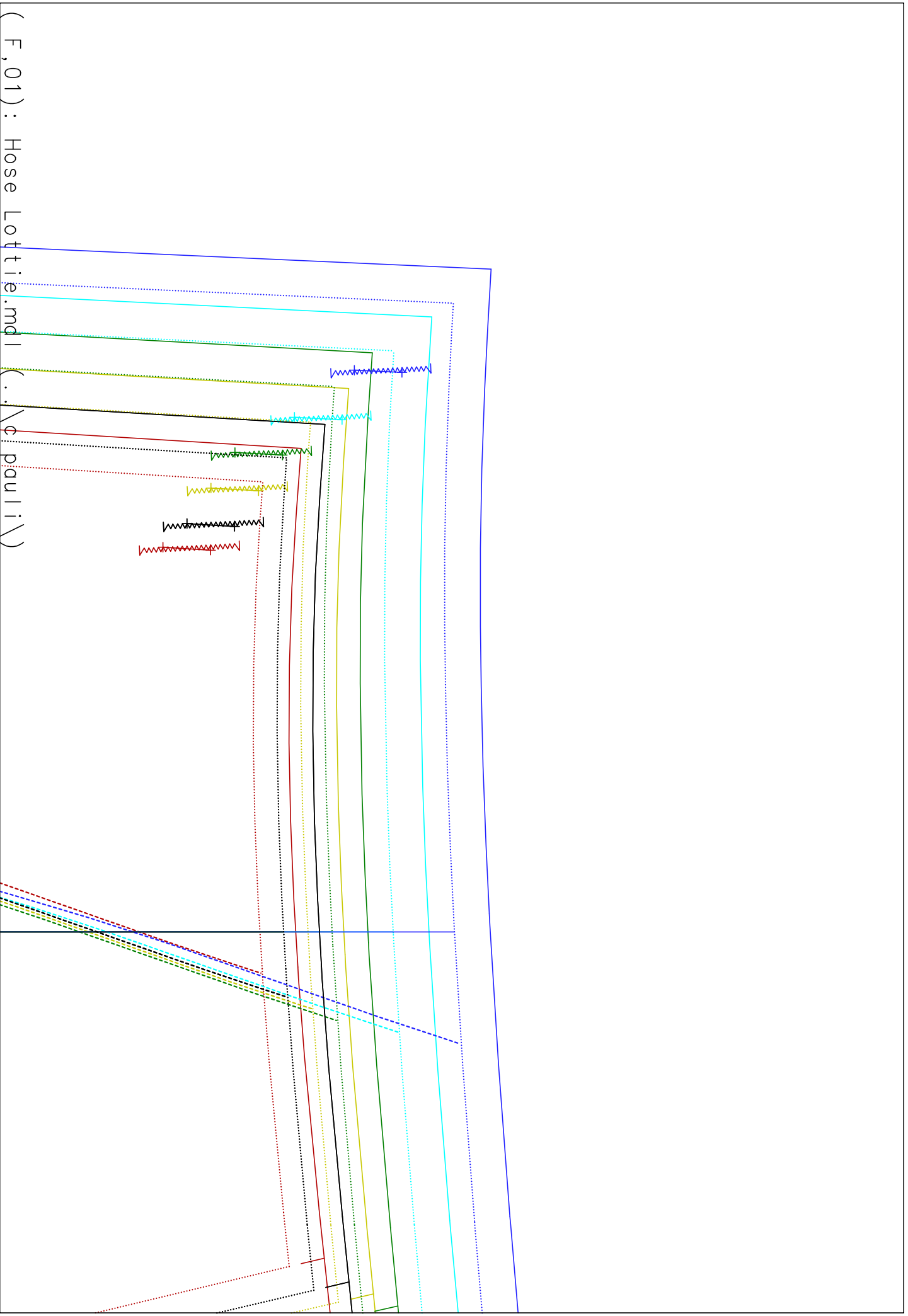


( F, 03 ) : Hose Lottie.ndl ( . \c pauli X )

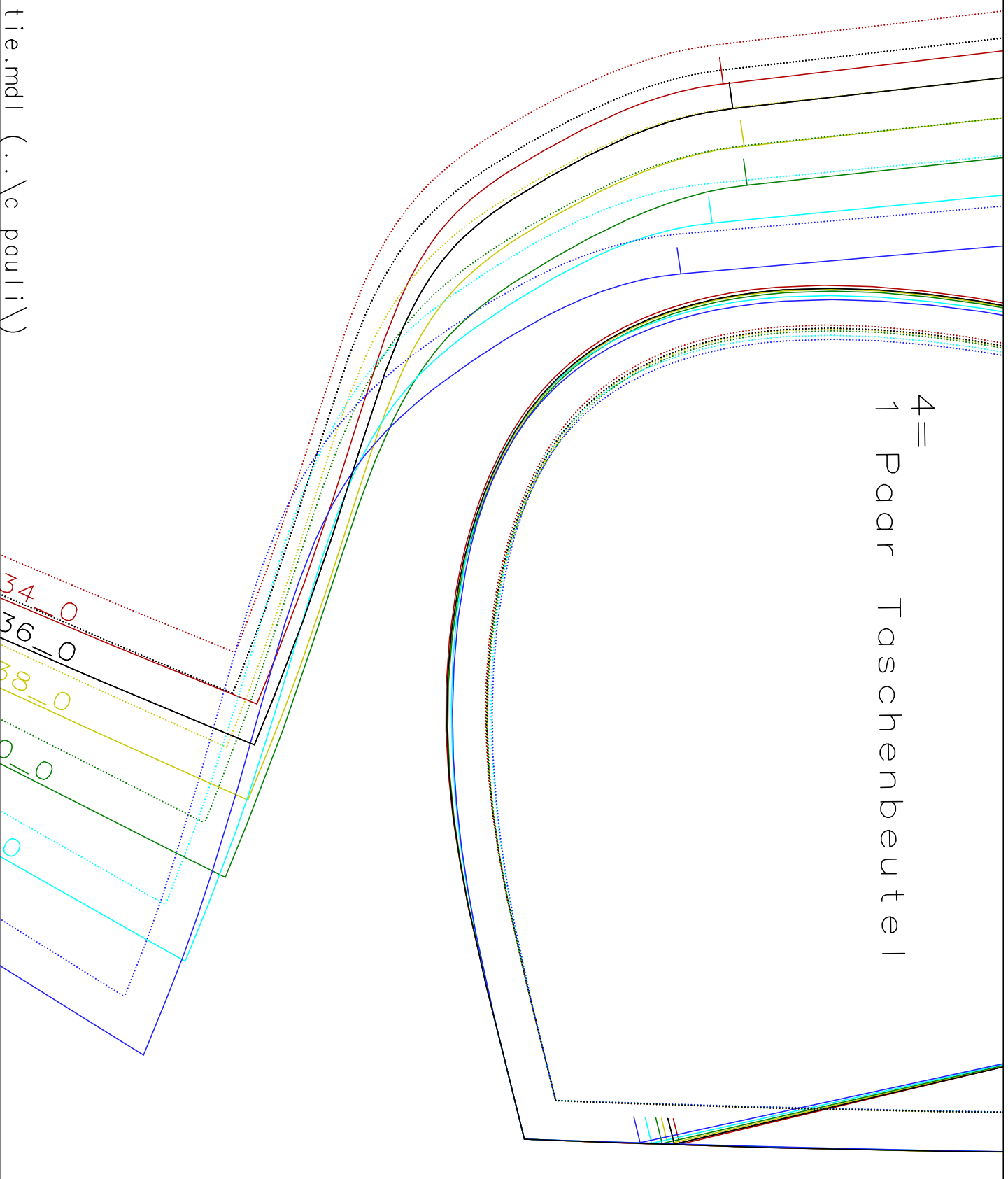


( F, 02 ) : Hose Lottie.mdl ( : . \c pauli \ )

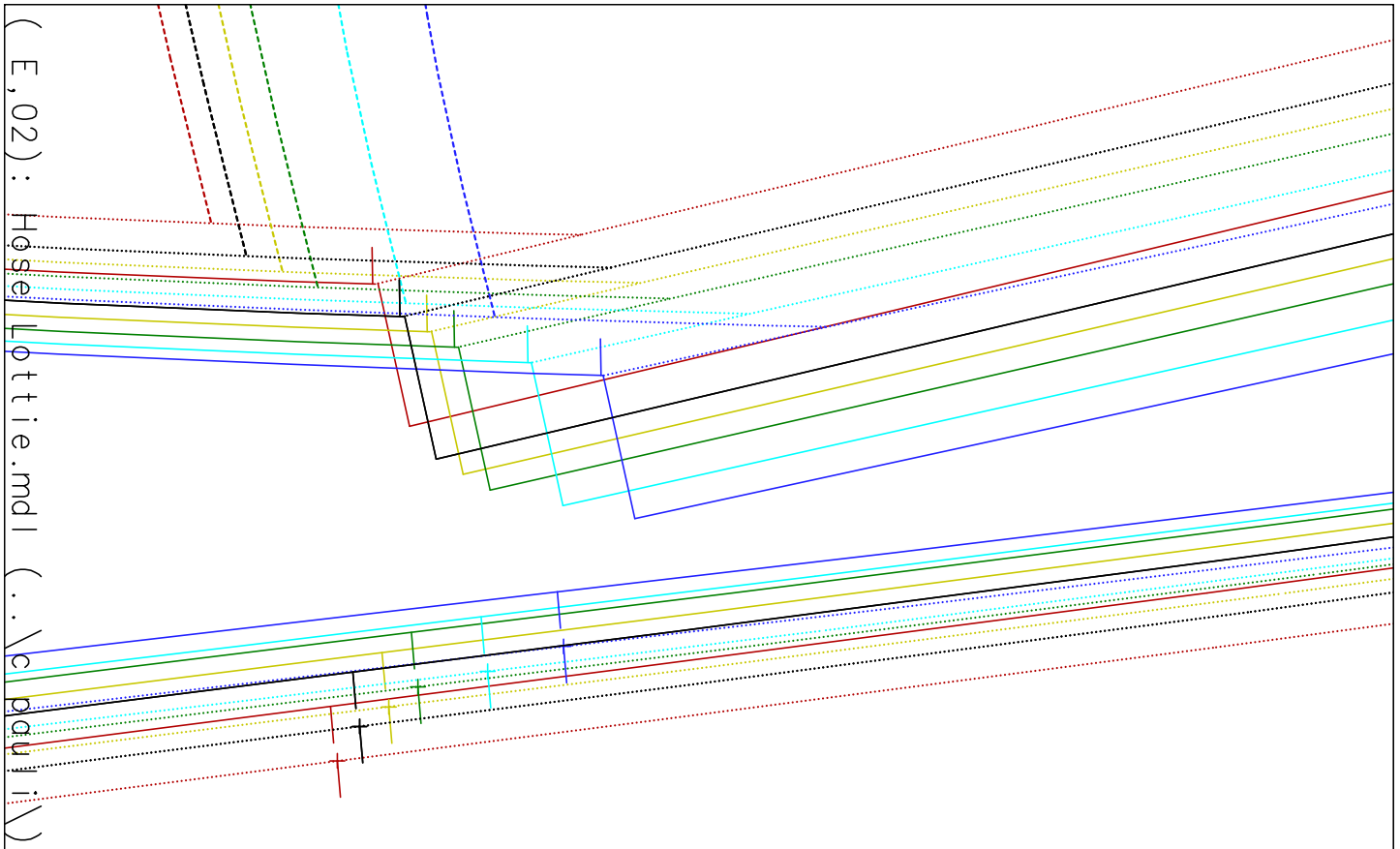


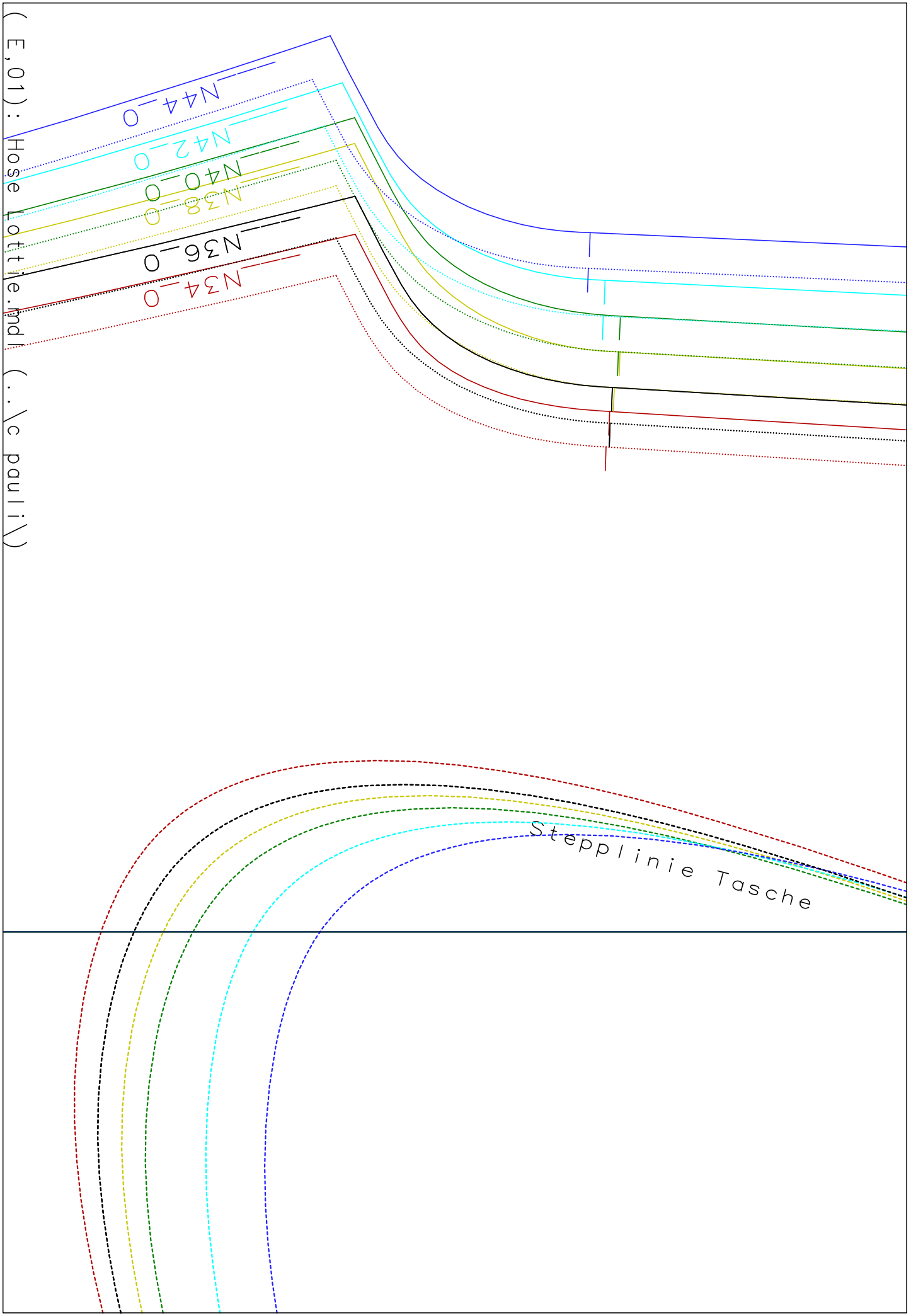
( F, 01 ) : Hose Lottie.mdl ( . . \c pauli \ )

4=  
1 Paar Taschenbeute |



( E,03 ) : Hose Lottie.mdl ( ..\c pauli\ )

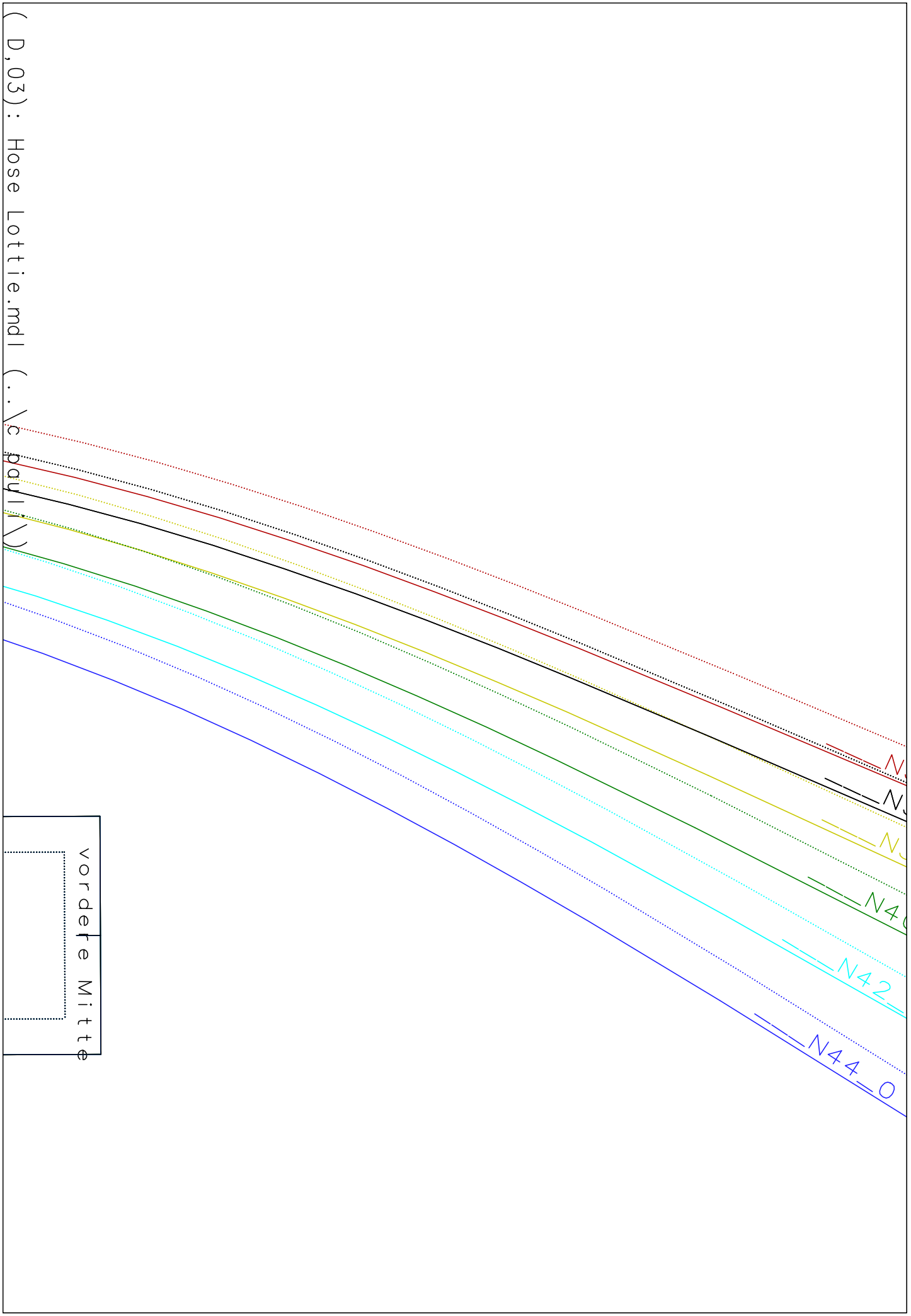


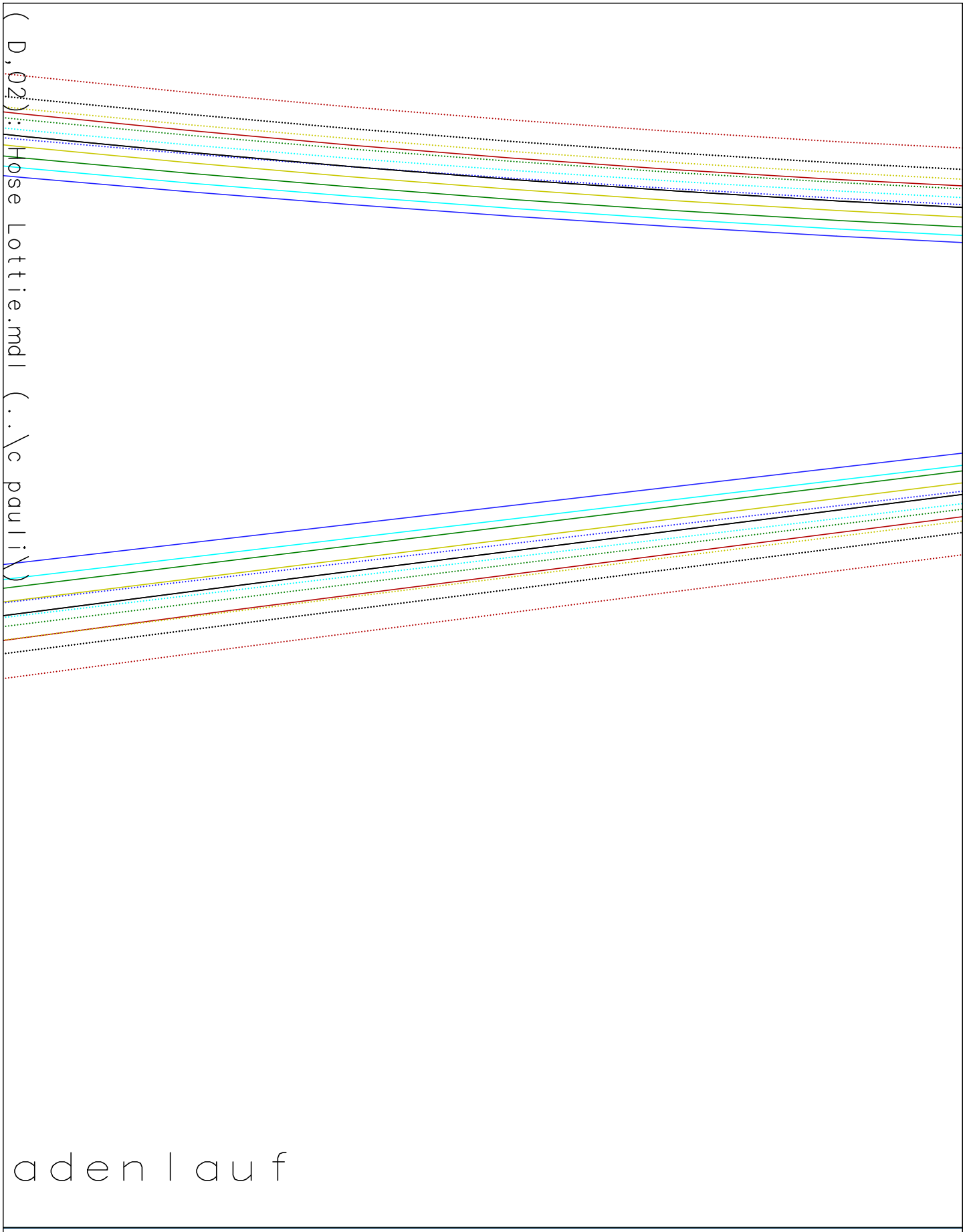


( E, 01 ) : Hose Lotte.indl ( .. \c pauli \ )

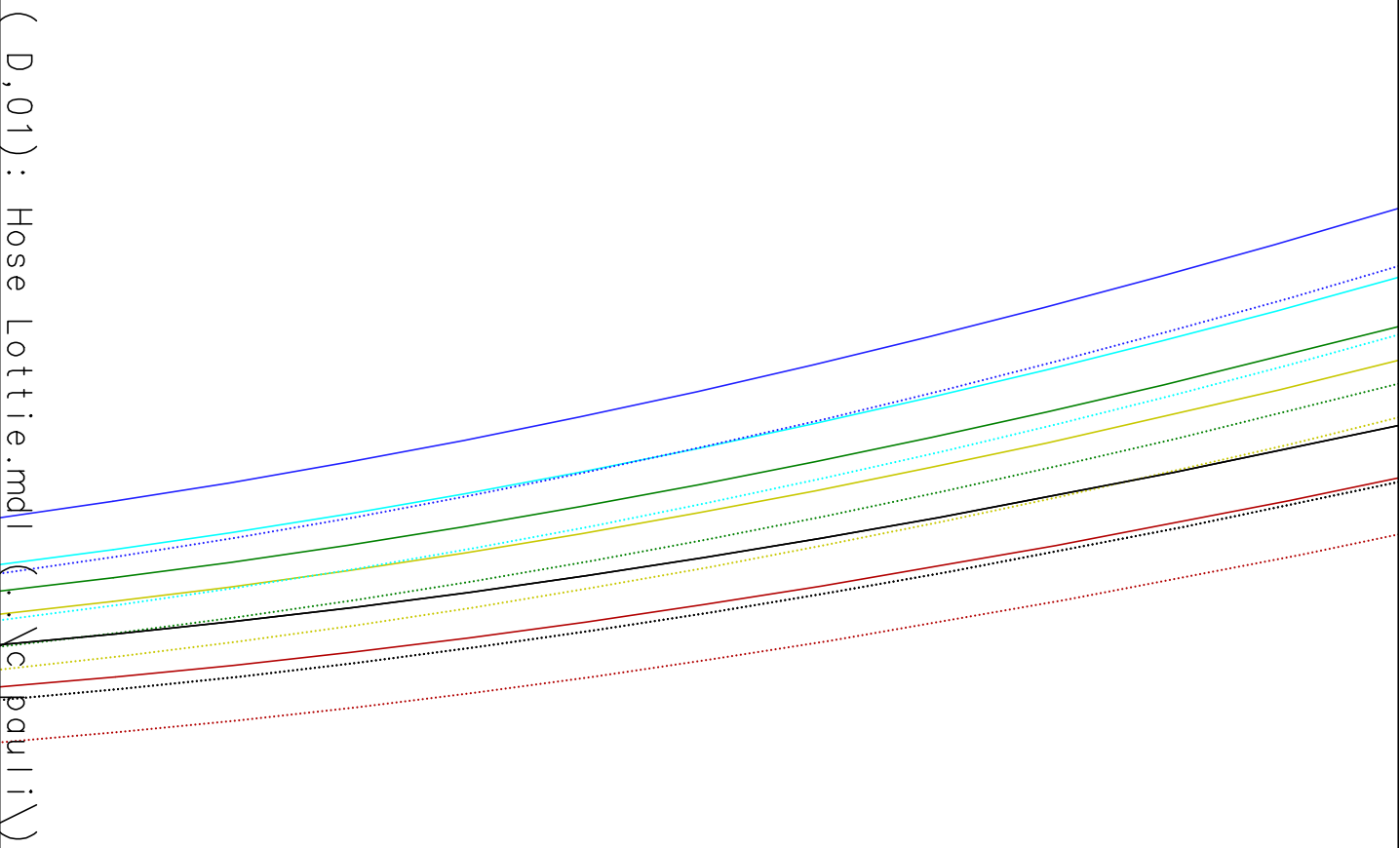
Stepplinie Tasche





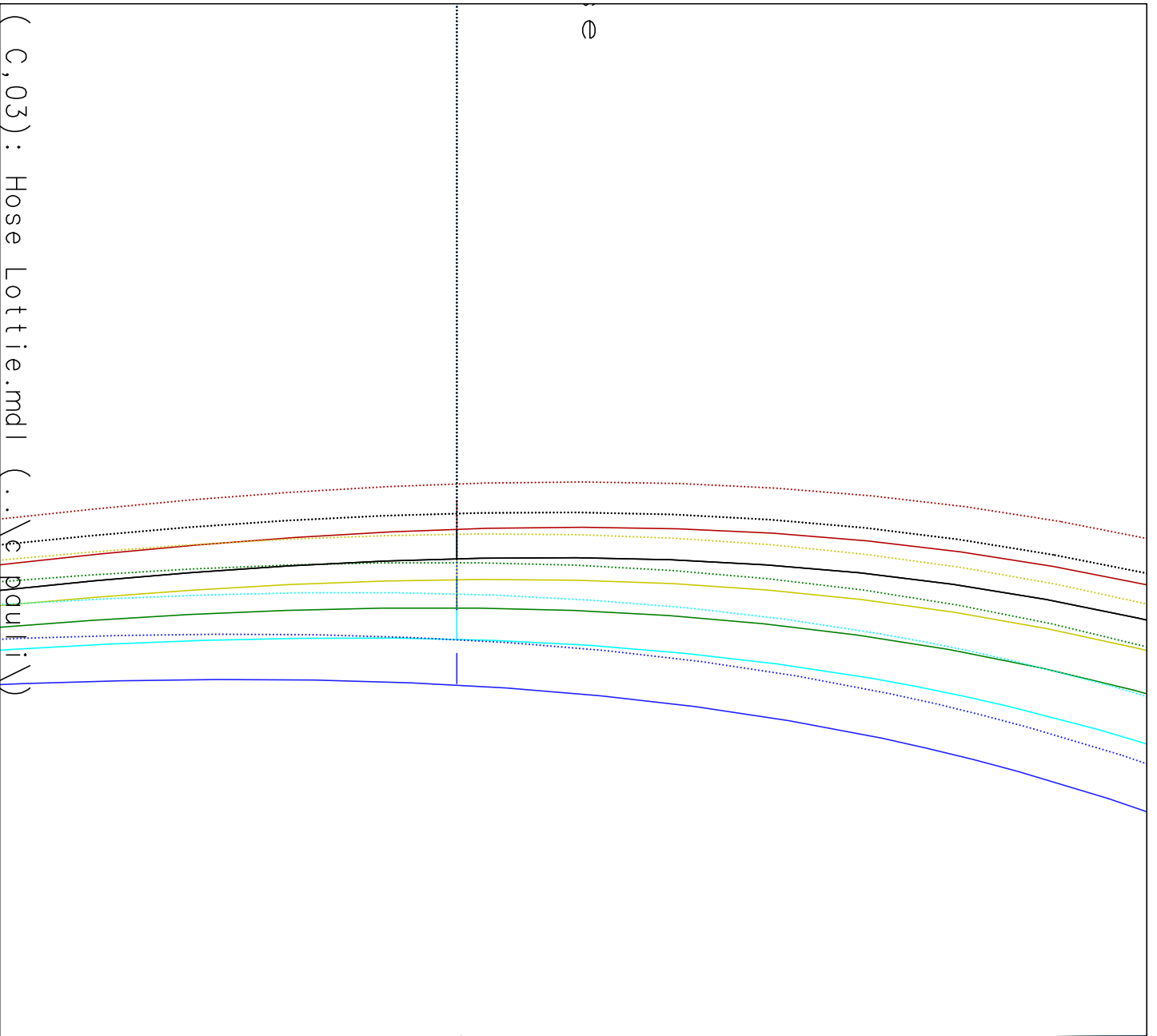


adenlauf



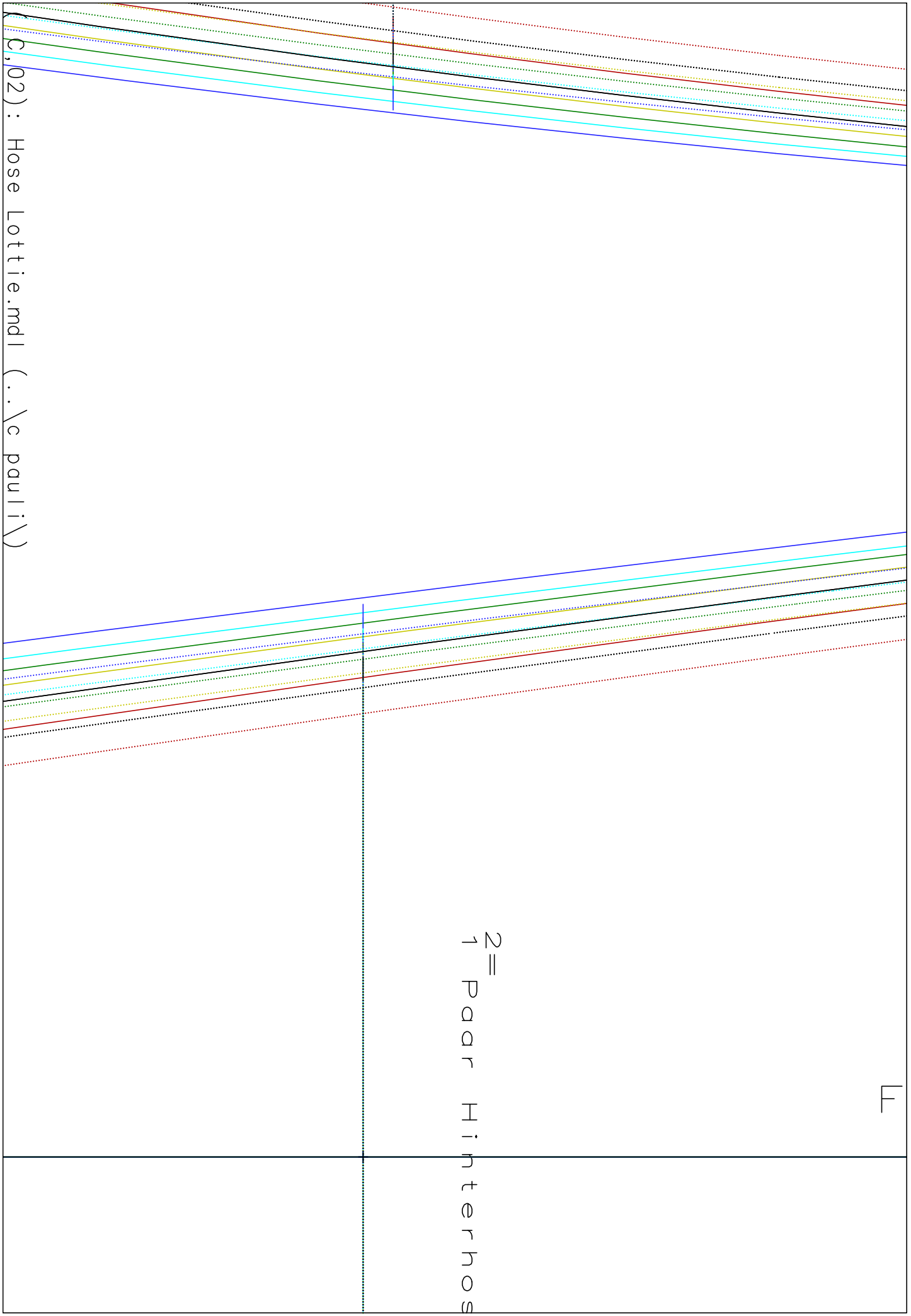
lauf

3 =  
1 Paar Innenbund

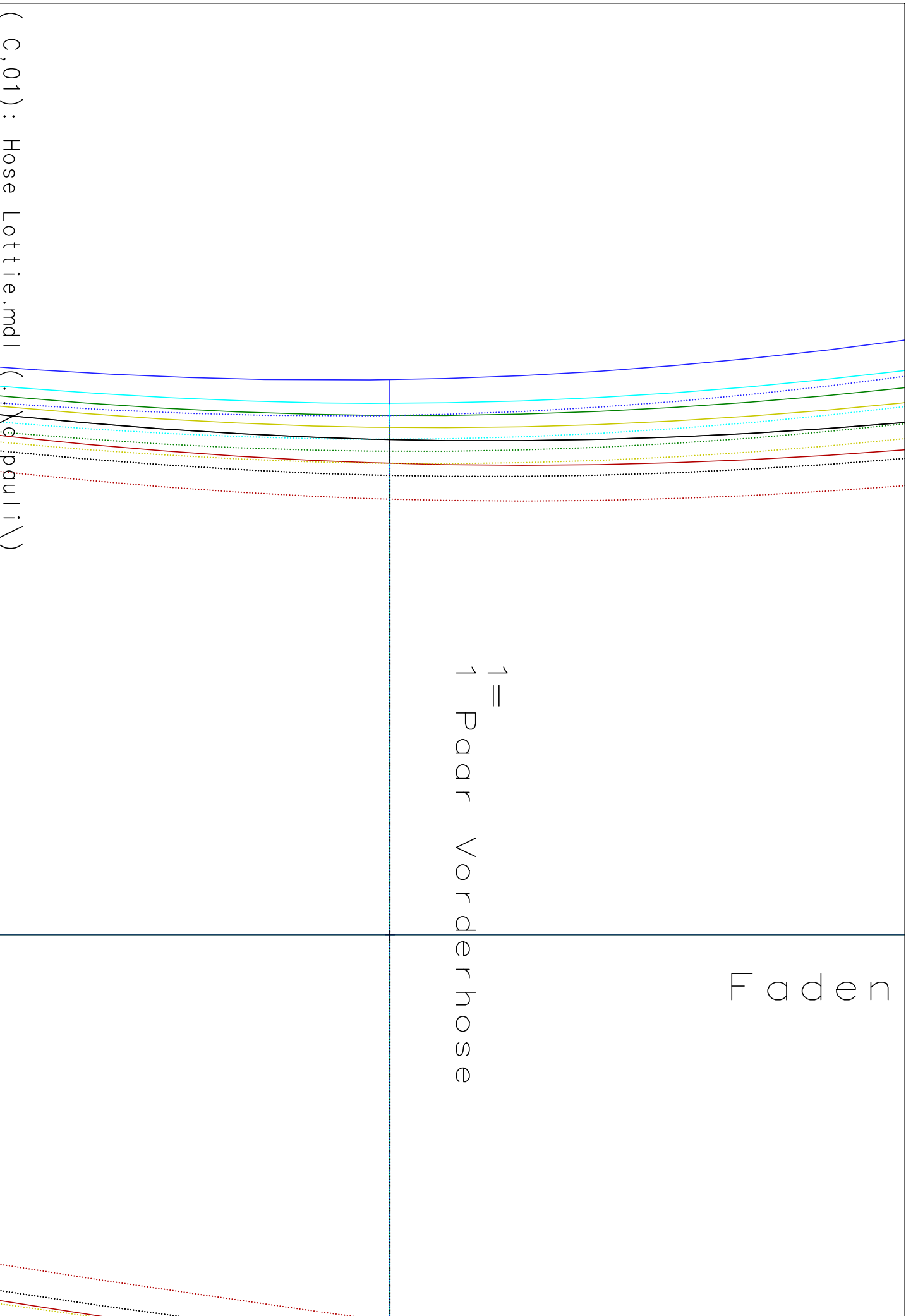


E

$z = 1$  Paar Hinterhos



(c,02) : Hose Lottie.mdl (..\c pauli\)



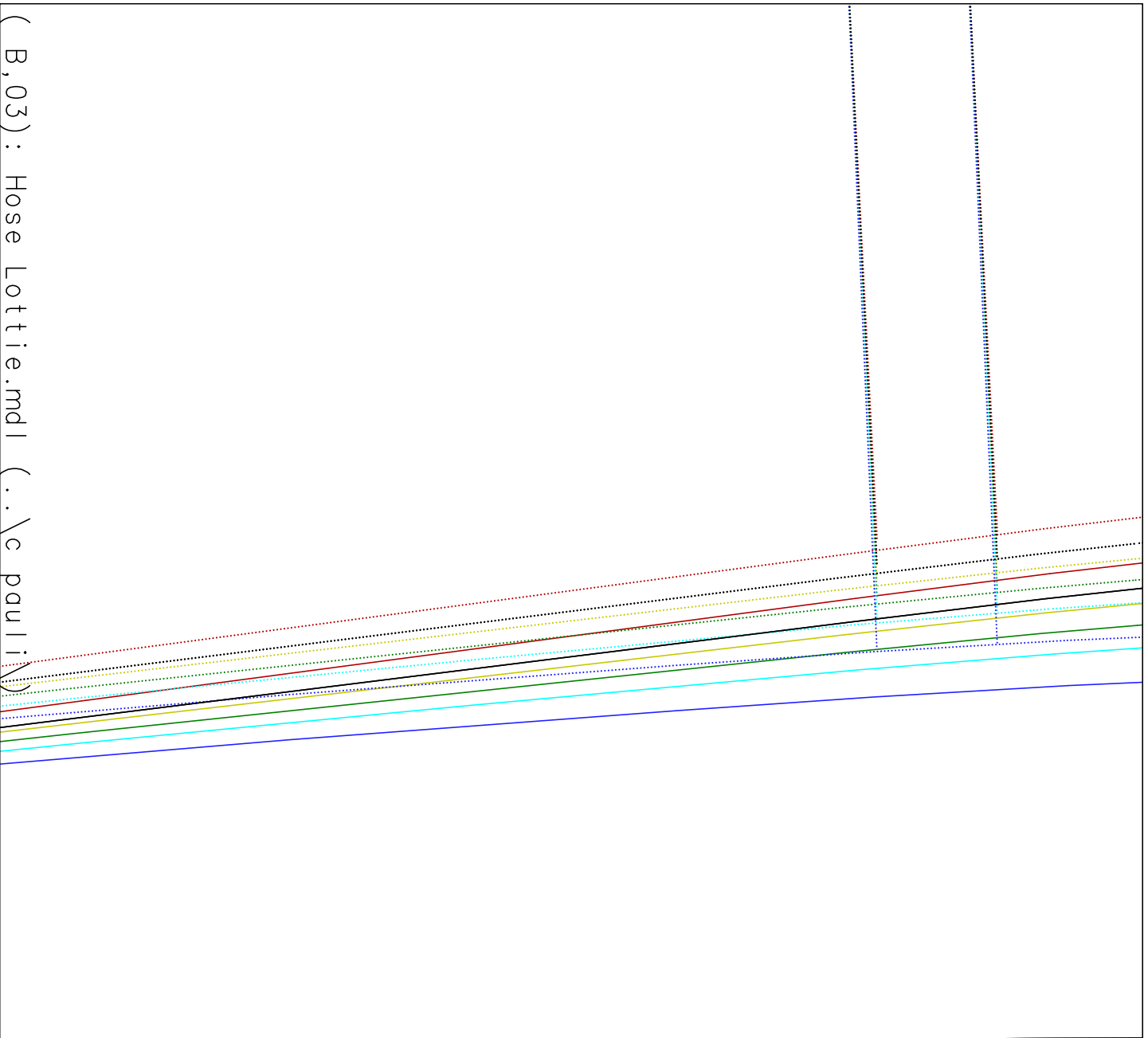
(c, 01) : Hose Lottie.mdl

(c, 01) : Hose Lottie.mdl

1 = Paar Vorderhose

Faden

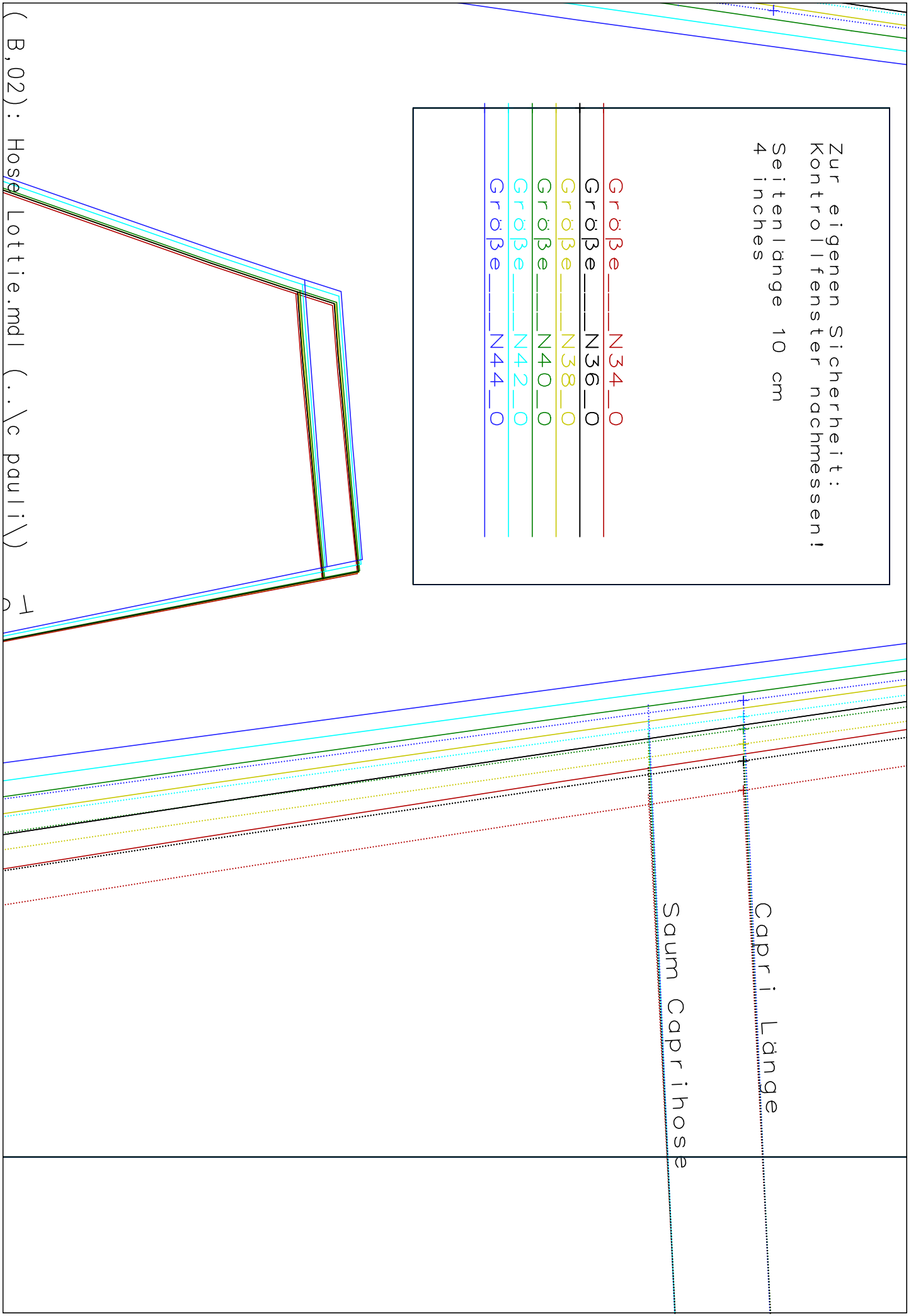
Seitenh



( B, 03 ) : Hose Lottie.mdl ( .. \c pauli \ )

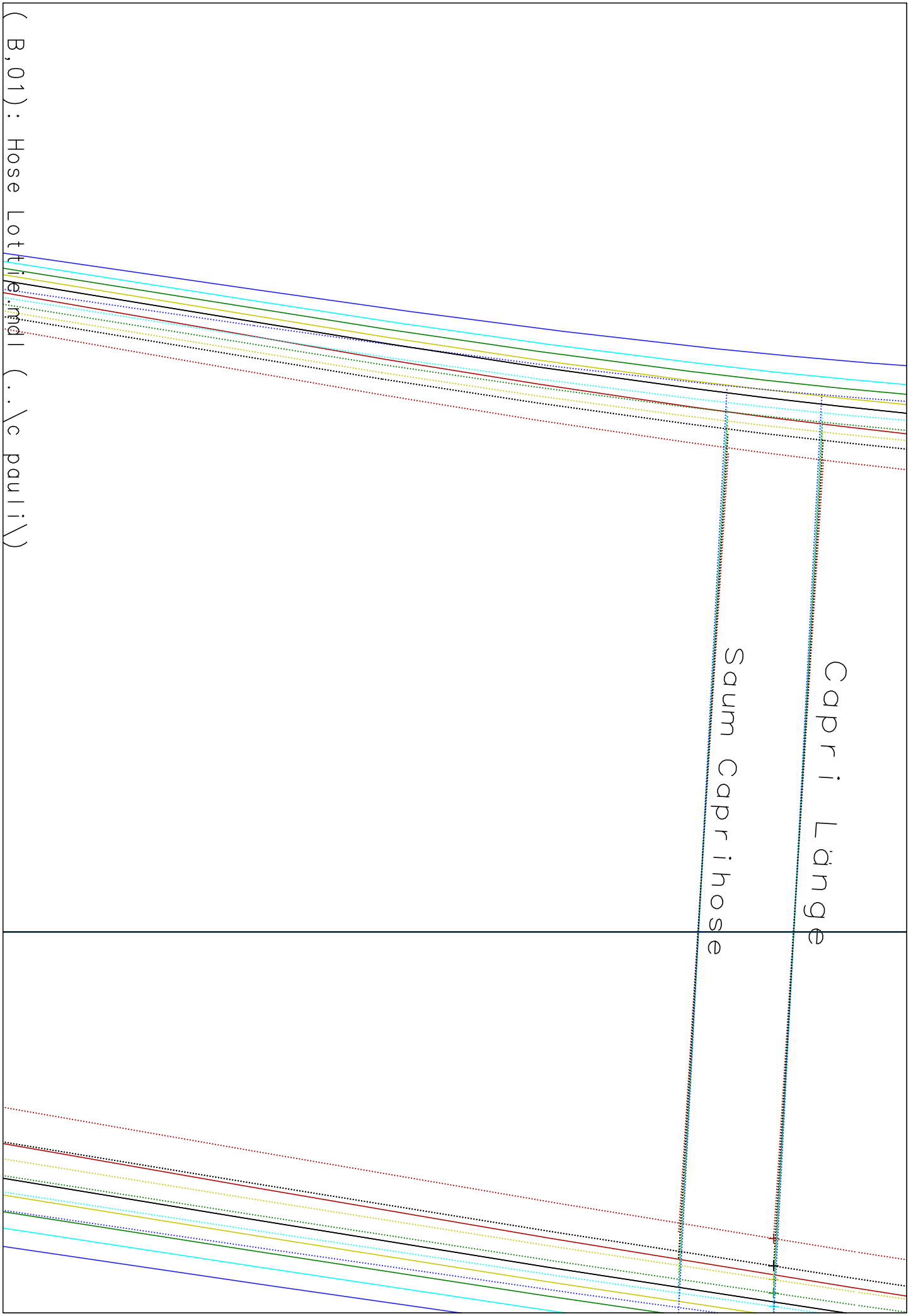
Zur eigenen Sicherheit:  
Kontrollfenster nachmessen!  
Seitenlänge 10 cm  
4 inches

Größe N34\_0  
Größe N36\_0  
Größe N38\_0  
Größe N40\_0  
Größe N42\_0  
Größe N44\_0

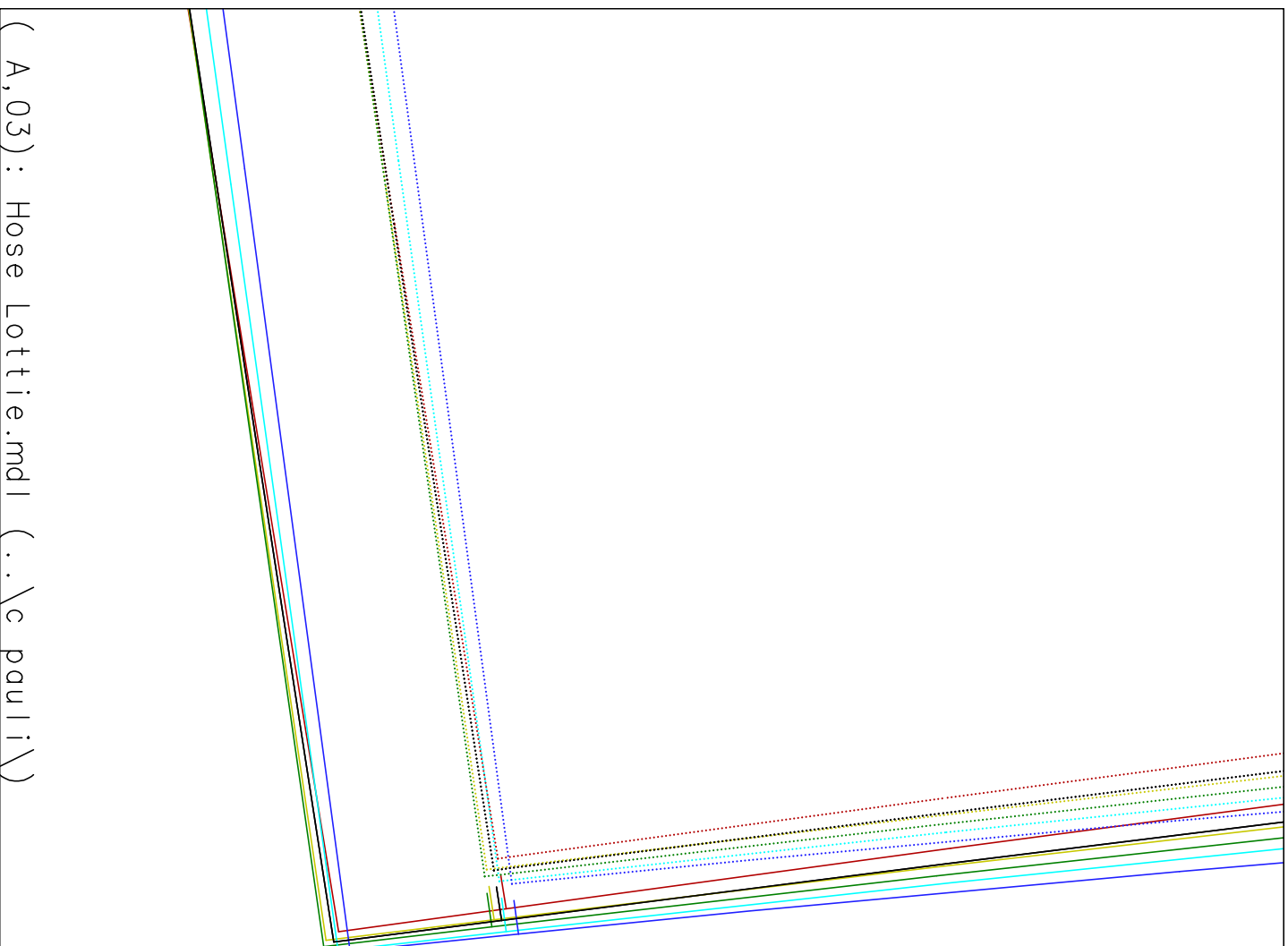
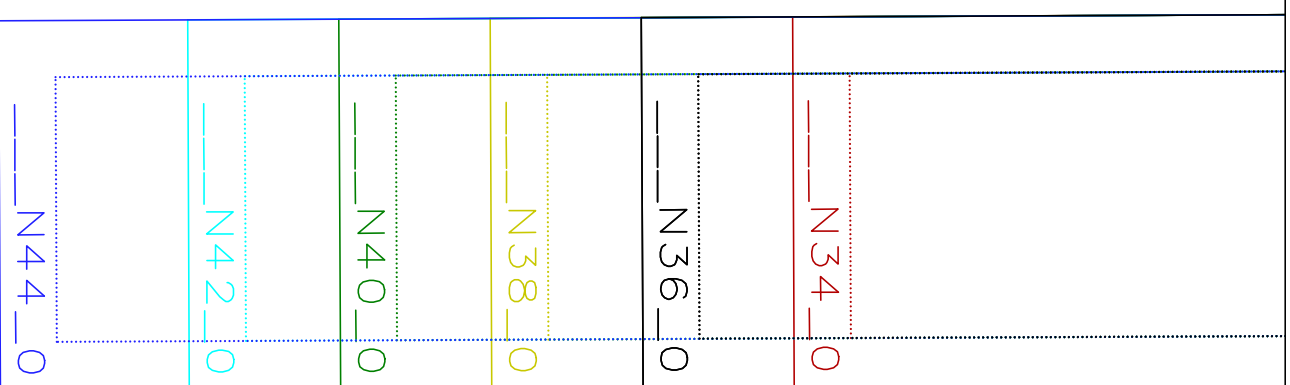


( B, 02 ) : Hose Lottie.mdl ( ..\c pauli\ ) T





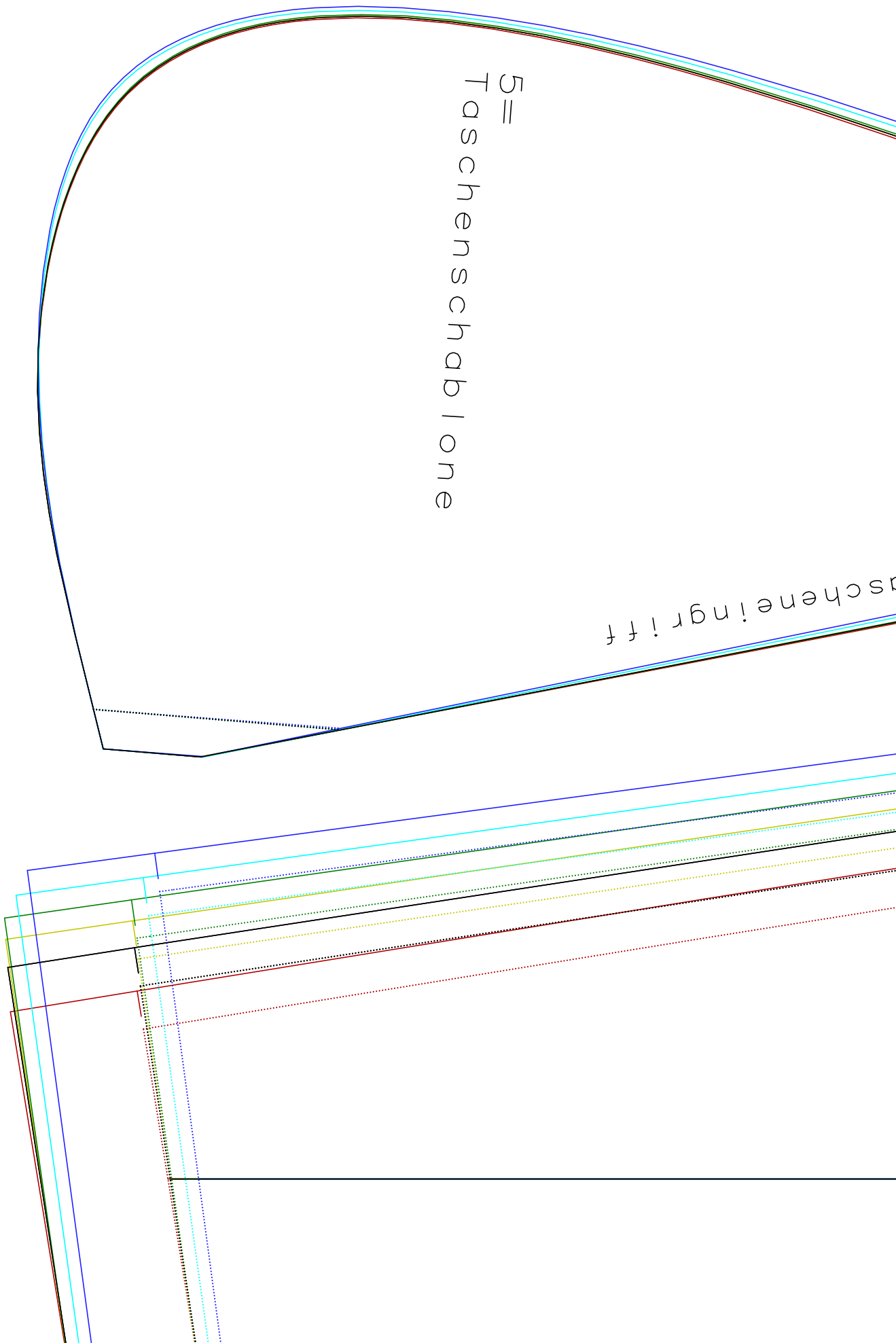
( B,01 ): Hose Lottie.mdi (..\c pauli\)



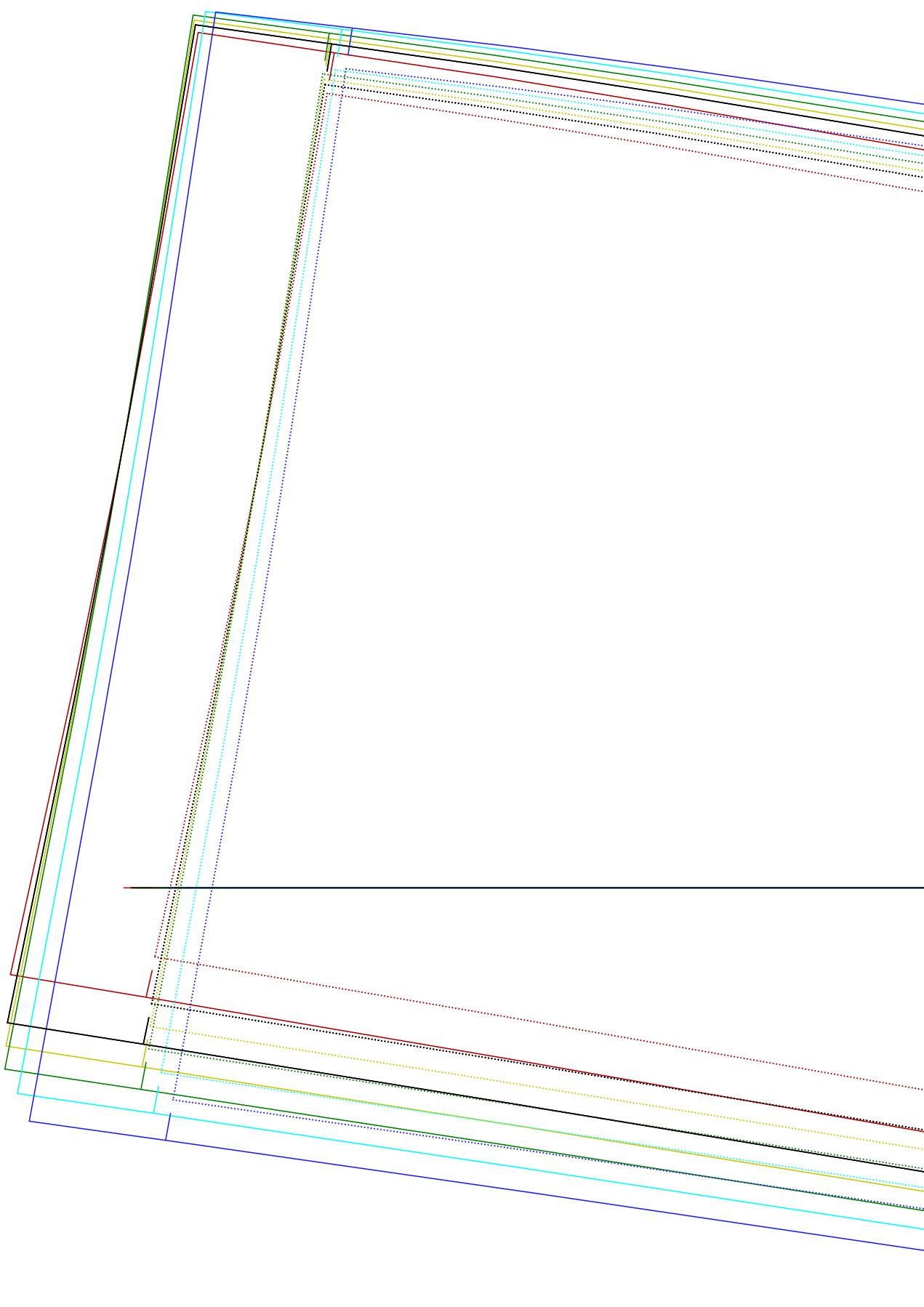
( A,03 ) : Hose Lottie.mdl ( ..\c pauli\ )

Tascheneingriff

5=  
Taschenschablone



( A,02) : Hose Lottie.mdl (..\c pauli\)



( A,01 ): Hose Lottie.mdl ( ..\c pauli\ )