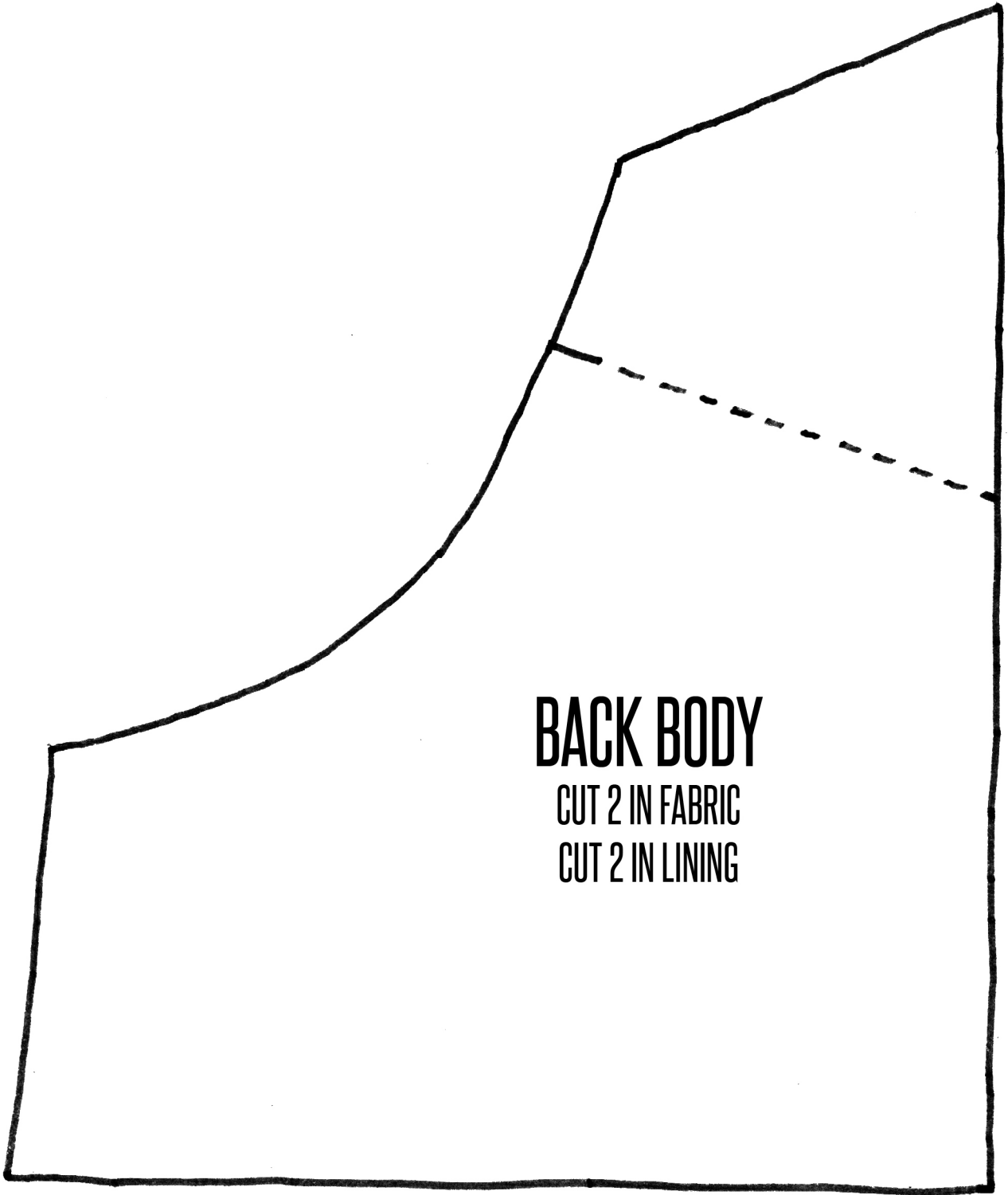


BODY FRONT

CUT 1 ON FOLD IN FABRIC

CUT 1 ON FOLD IN LINING

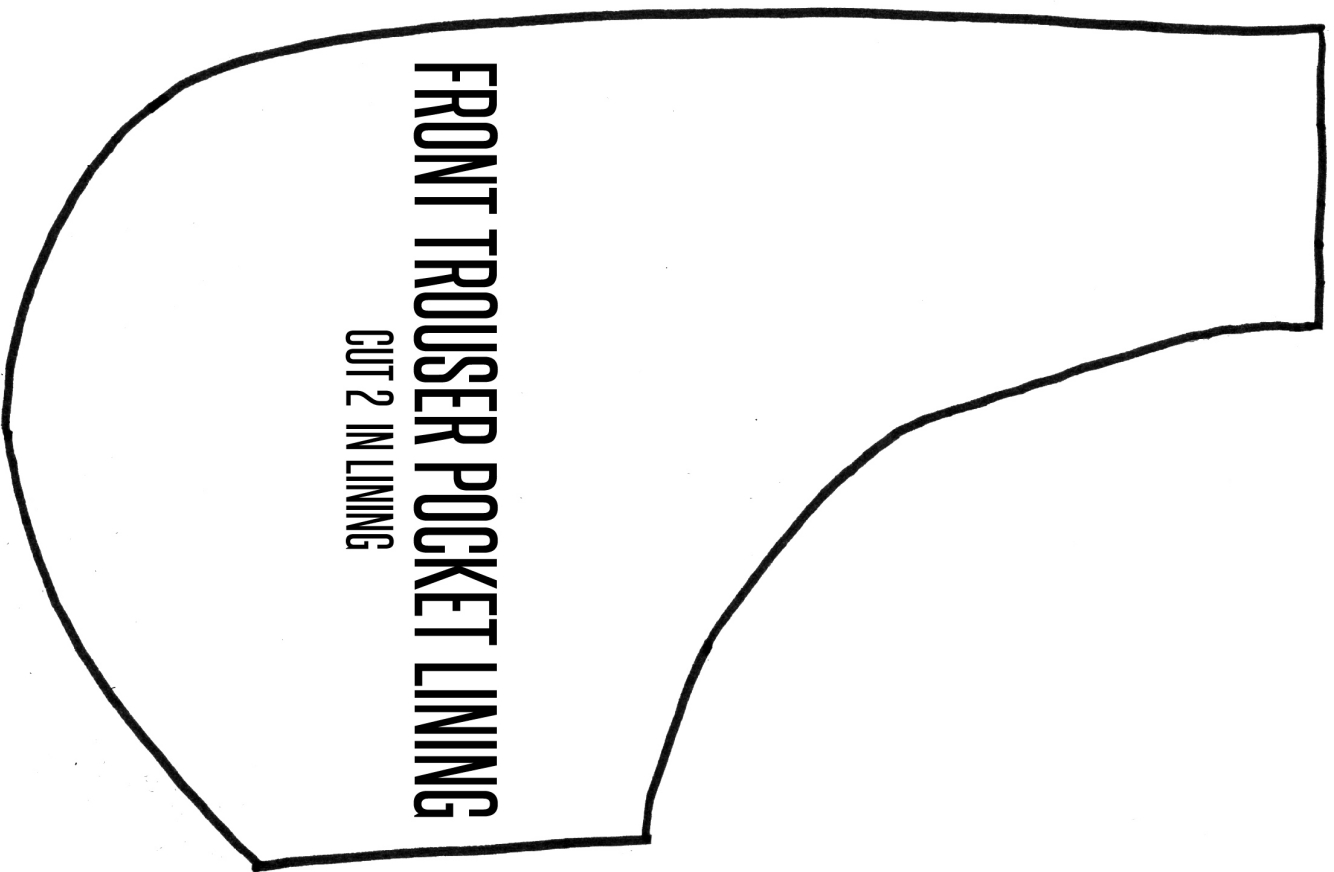
CUT ON FOLD



BACK BODY

CUT 2 IN FABRIC

CUT 2 IN LINING



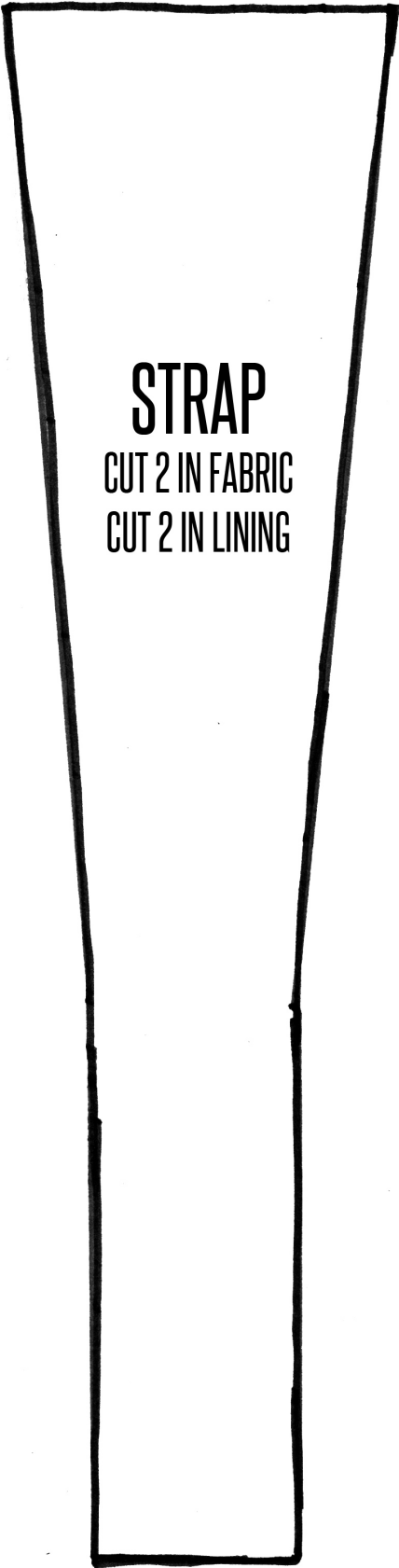
FRONT TROUSER POCKET LINING

CUT 2 IN LINING



FRONT TROUSER POCKET

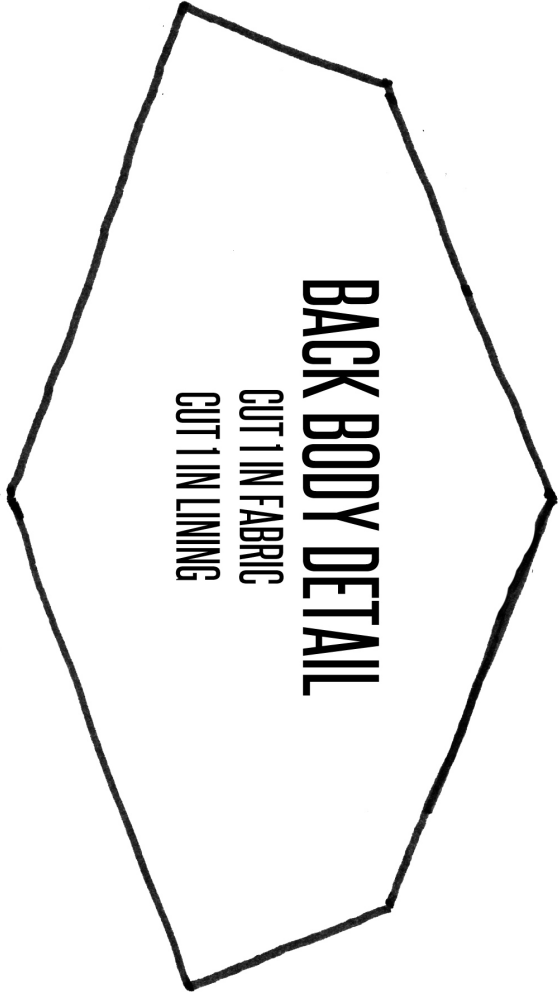
CUT 2 IN FABRIC



STRAP

CUT 2 IN FABRIC

CUT 2 IN LINING



BACK BODY DETAIL

CUT 1 IN FABRIC

CUT 1 IN LINING

A hand-drawn pattern for a back trouser pocket. It is a rectangular shape with a rounded top-left corner and a small notch at the top-right corner. The text is centered within the shape.

BACK TROUSER POCKET

CUT 2 IN FABRIC

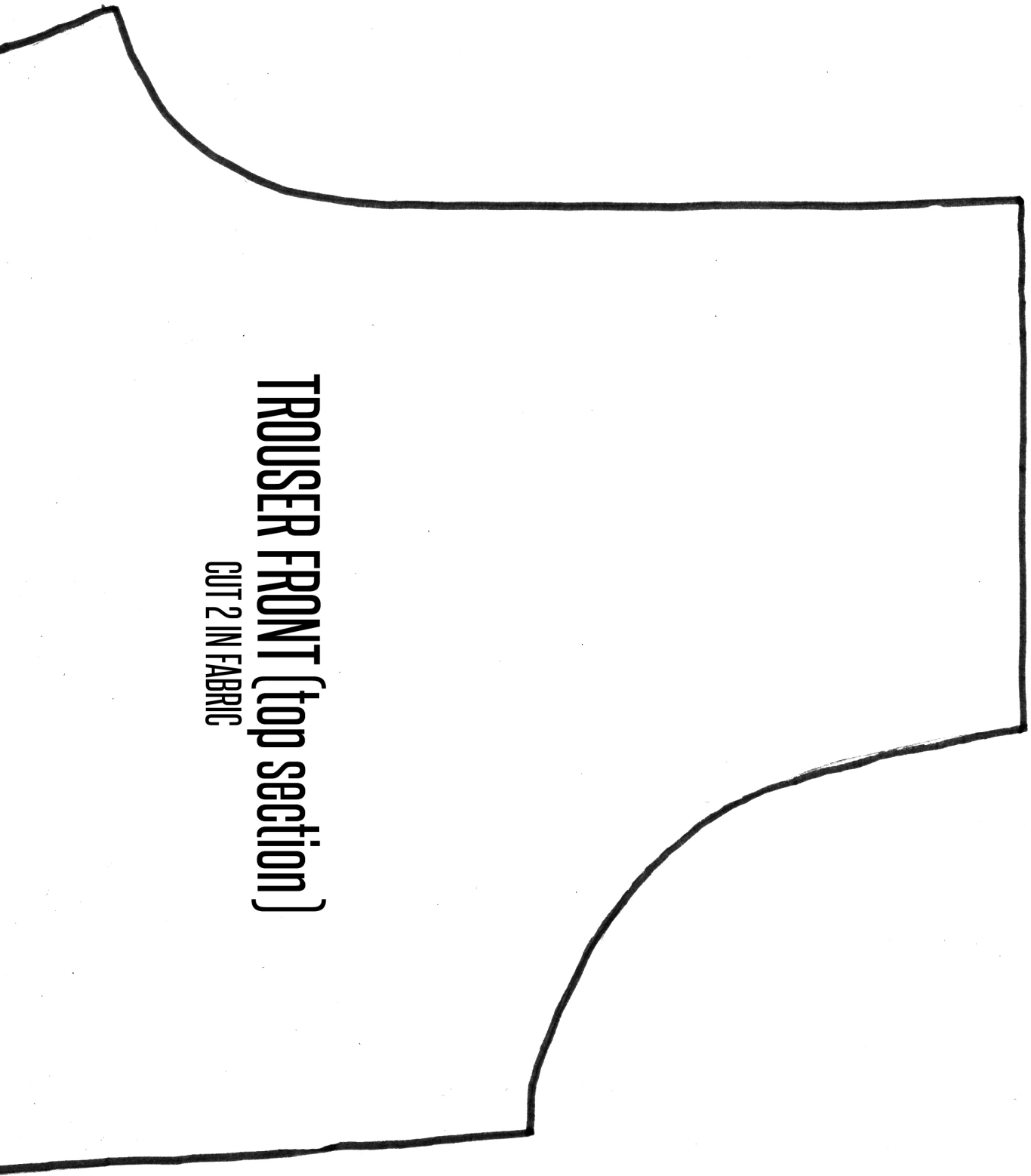
CUT 2 IN LINING

A hand-drawn pattern for a front body pocket. It is a rectangular shape with a rounded top-left corner and a small notch at the top-right corner. The text is centered within the shape.

FRONT BODY POCKET

CUT 1 IN FABRIC

CUT 1 IN LINING



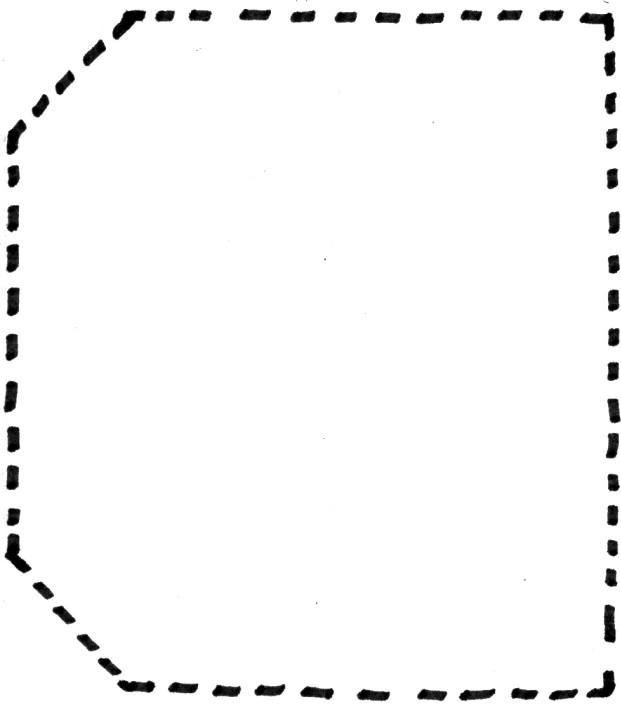
TROUSER FRONT (top section)
CUT 2 IN FABRIC



TROUSER FRONT (middle section)

CUT 2 IN FABRIC

TROUSER BACK (top section)
CUT 2 IN FABRIC





TROUSER FRONT (bottom section)

CUT 2 IN FABRIC



TROUSER BACK (middle section)

CUT 2 IN FABRIC

TROUSER BACK (bottom section)

CUT 2 IN FABRIC