

fennec fox PLUSH



A FREE SEWING PATTERN BY



fennec fox plush

This sweet little fox is a cute partner to my previous fox plush pattern! Not only does it have large, adorable ears, but it has a smaller body too with tiny arms and legs. They would look great together as a set, but cute enough to stand on its own.

DIFFICULTY:



The body for this plush is a little challenging since it's tiny yet still has all the arms and legs to fit inside. Be sure to sew the bottom just a small bit at a time and move pieces out of your way as you go.

SKILLS USED:

- Fusible web applique
- Curved sewing
- Basting
- Darts
- Ladder stitch
- Sewing small pieces

MAKES:

One plush: about 5½" tall, 4" wide, and 3½" long (not including ears and tail)

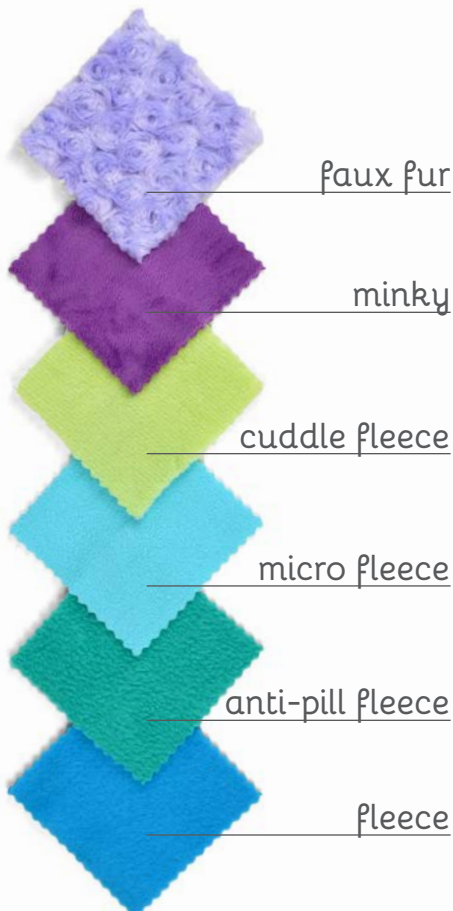


sew desu ne?

| WWW.CHOLYKNIGHT.COM |

materials & tools:

- ¼ yd. fabric for main body
- ¼ yd. or 9" x 9" of accent fabric for inner ears and belly
- ⅛ yd. or 5" x 5" of dark accent fabric for tail tip
- 7" x 4" piece of scrap fabric for bean pouch
- 3" x 3" piece of black applique fabric for pupils and nose
- 3" x 3" piece of accent applique fabric for eyes
- 2" x 2" piece of white applique fabric for eye shines
- 3" x 3" piece of accent fabric for eyebrows & eye outlines
- 5" x 5" piece of light or heavy duty fusible web
- sewing thread to match main fabric and applique fabrics
- poly-fil stuffing
- poly pellets for weight
- spoon or funnel for filling poly pellets
- basic sewing tools (sewing machine, scissors, iron, needles, pins, fabric marker, seam ripper)



SUGGESTED FABRICS:

Plush, stretchy fabrics such as fleece or minky are suggested. The variations of fleece and minky mentioned to the left would work well, but really any plushy fabric with a bit of stretch on the cross-wise grain would be well-suited.

Stretch fabrics like **FLEECE** or **MINKY** will create a more squat, round shape when stuffed.

Non-stretchy fabrics, like **FELT** or **COTTON**, won't stretch when stuffed so the resulting plush will look elongated as shown.

MINKY

VS.

FELT

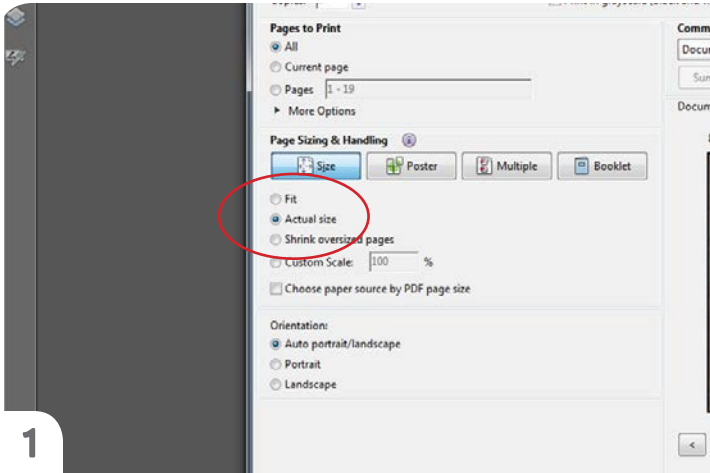


sew desu ne?

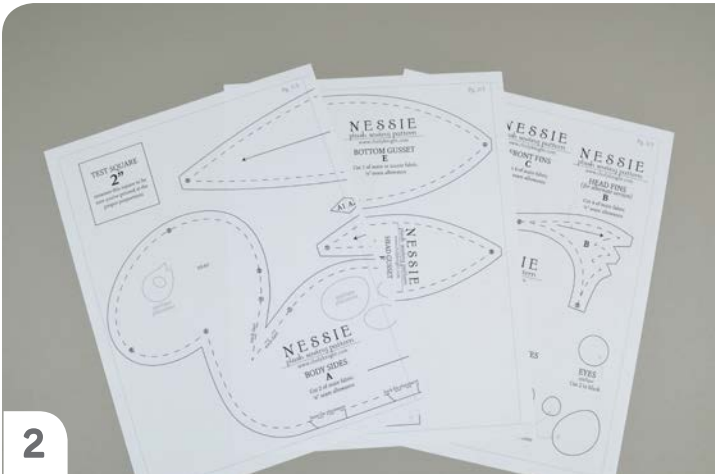
| WWW.CHOLYKNIGHT.COM |

printing the pattern:

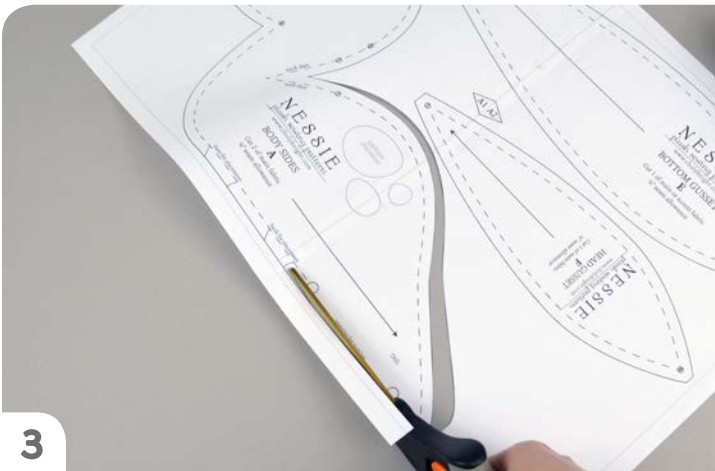
To print the pattern, set your computer to print **PAGES 18-19**. If you're unfamiliar with printing and assembling a .pdf pattern, read the steps below.



At the print dialog box, check the box that says print at “Actual Size” or 100%. Any other selection (such as “Fit to page”) will distort the pattern so it’s slightly larger or smaller and we don’t want that.



Print the pages needed for the file. You might have one or more. Either way, be sure you have the full collection by noting the page numbers in the corner.



You can trace the patterns onto a different paper, or you can also just cut them straight from the printer paper. They might be a little hard to pin through, so you might want to use your longest pins. But you could also use pattern weights or trace the outlines onto the fabric with a washable marker and cut them out from there.

sew desu ne?

| WWW.CHOLYKNIGHT.COM |

cutting the fabric:



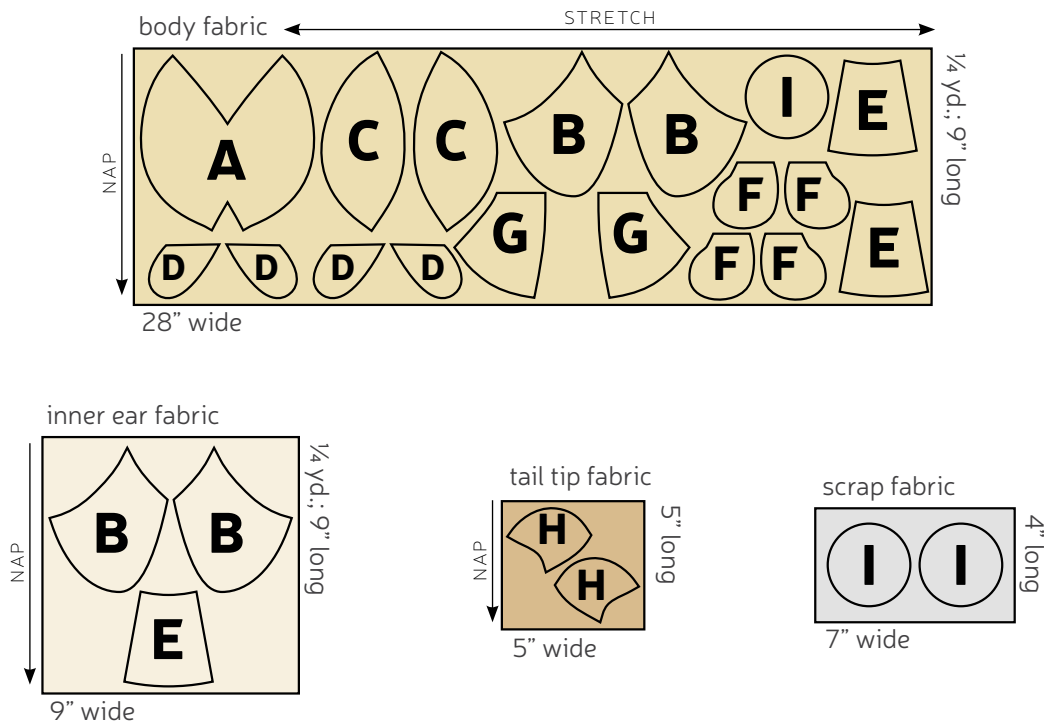
1
Place pattern on the fabric, and make sure the stretch line matches the stretch of the fabric. The nap line should go in the direction of the fur.

2
Pin the pattern in place, use pattern weights, or trace the outline of the pattern with a washable marker.

3
Using the paper as a template, cut out the fabric. Cut the required amount according to the pattern.

4
For all fur fabrics, shake the excess fuzz away.

cutting layout:

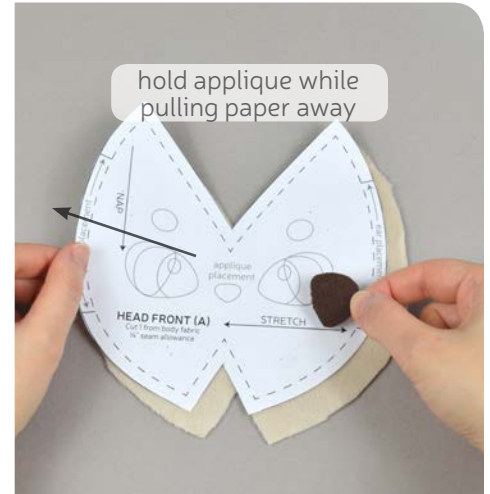


BEFORE YOU BEGIN:

- Briefly read the project instructions so you know what to expect.
- If desired, mark the cut fabric pieces with the markings and symbols from the pattern. Or wait until the applicable step before transferring.
- Note that a 1/4" seam allowance is used throughout the project.

sew desu ne?

| WWW.CHOLYKNIGHT.COM |



1. PREPARE THE FACE APPLIQUE

- Grab your fusible web and trace all the applique pieces you want onto the smooth (paper) side. You should have at least two eyes, two pupils, a nose, and two eye shines. There are also optional eye outlines and eyebrows you can add.
- Fuse the bumpy (adhesive) side onto the wrong side of your applique fabric. The eyes should go on an accent color, the pupils and nose on black, and the eye shines on white. The eye outlines and eyebrows should go on another accent color.
- Cut out the eye outlines and arrange them on the **HEAD FRONT (A)** piece. Set your paper pattern on top of the fabric piece (right sides up). Align the eye piece on top where the placement markings are. Then carefully pull the paper pattern away while holding the applique piece in place.

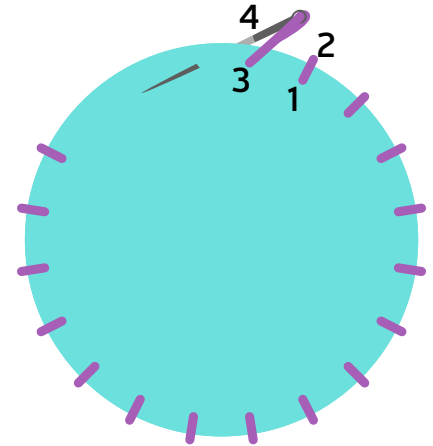
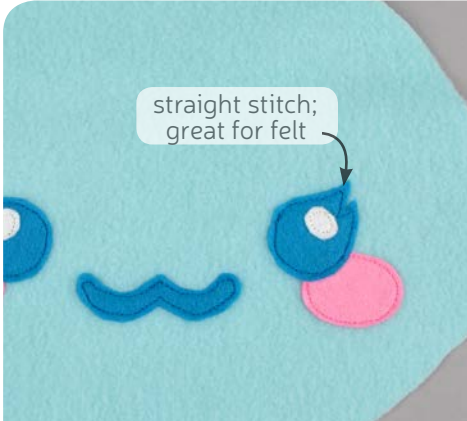


2. FUSE THE APPLIQUE

- Fuse the eye outline piece in place with your iron. Use a press cloth if you're using a polyester or fuzzy fabric like minky.
- Next, move onto the smaller pieces: the **eyes, pupils, nose, eye shines**, and **eyebrows**. Fuse them the same way as you did the eyes, using the paper pattern and photos as a guide.
- If you used heavy duty fusible web, you can keep the pieces fused without sewing, or you can sew them in place a number of ways. I've used a zigzag stitch here.
 - Refer to the next step for some other applique options.

sew desu ne?

| WWW.CHOLYKNIGHT.COM |



2a. OTHER APPLIQUE OPTIONS

- Other good options for applique include a straight stitch, which involves sewing around the edge of the applique pieces with a straight stitch using matching thread -- about 1/8" in from the edge.
- You can also applique by hand; I prefer a whipstitch. Thread a hand-sewing needle with some matching thread and knot it. Bring the thread up from the back of the project; about 1/8" in from the edge of the applique shape. Bring it down perpendicular from the curve, just outside of the applique shape. This completes one stitch.
- For the next stitch, bring the needle back up about 1/8" away from the previous stitch and 1/8" in from the edge just as in the first stitch. Once again, bring it down just outside the applique shape. Continue this way until you've sewn around the shape.



3. SEW THE DARTS

- Locate the open wedges found on the top and bottom of the **HEAD FRONT (A)** piece -- these are the **darts**. To sew them, start by folding the front piece in half along the point of the dart and match up the slanted lines that make the wedge shape.
- Sew the **darts** by starting at the opening and moving down to the point.
- When sewing the point, try to blend the seam in with the fold so it makes a smooth transition and a rounder finished plush.

darts:

A wedge-shaped gap found in a pattern. When sewn in fabric, it creates a tuck in the fabric and develops a 3D shape. The diagonal sides of the wedge are the **LEGS**; these are matched up and sewn to the **POINT** of the dart.

sew desu ne?

| WWW.CHOLYKNIGHT.COM |



4. SEW THE EARS

- Grab your **EAR** pieces (B). Take one from your inner ear fabric and one from your main body fabric. Line them up with right sides facing and raw edges matching up.
- Sew them together along the long curved edge. Leave the pointed edge free for turning right side out.
- Turn the ear right side out. Repeat with the remaining two ear pieces for two complete ears total. Fold the ear along the **fold line** found on the paper pattern for guidance. The inner ear fabrics should be facing. The open edge of the ear should line up when folded correctly.



5. BASTE THE EARS

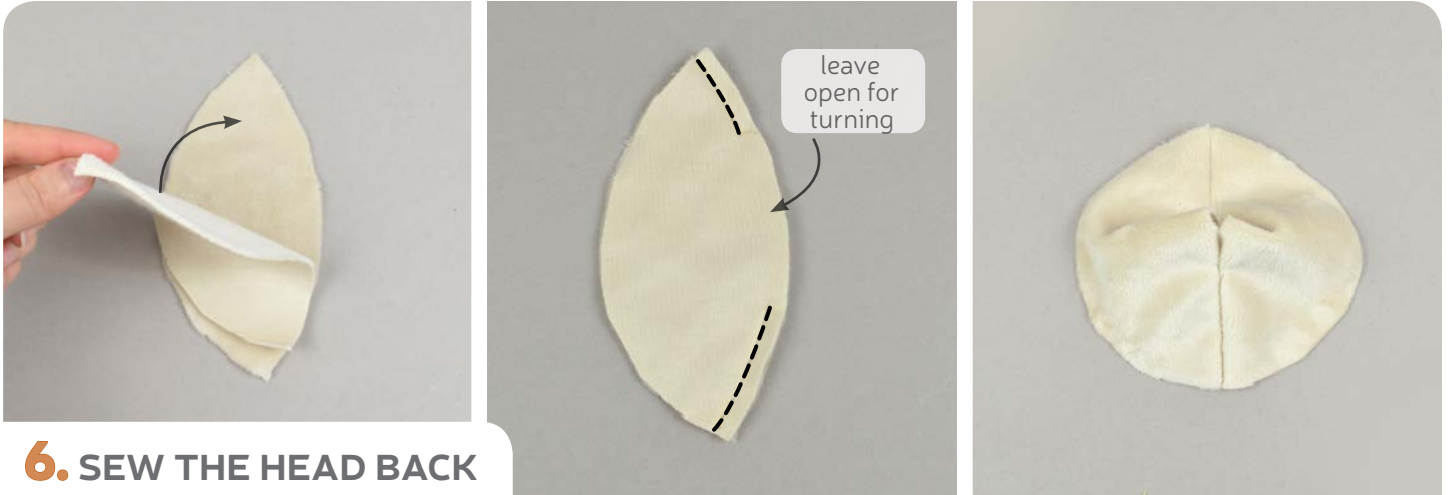
- Take the folded ears and stitch along the open edge to hold the fold in place.
- If you haven't already, locate the **ear placement lines** found on the **HEAD FRONT (A)** paper pattern. Transfer them over to the right side of the fabric. Place the open end of the ear within these placement lines. The folds should point toward the center top of the head.
- Flip the ears to the inside so the raw edges line up and the inner ear fabrics face the front. Baste the ears to the front within the seam allowances to hold them in place for future steps.

basting:

A form of temporary sewing meant to hold pieces in place. A long stitch length is often used for this reason. The finished result is not meant to be seen and sometimes is even removed later (depending on your project).

sew desu ne?

| WWW.CHOLYKNIGHT.COM |



6. SEW THE HEAD BACK

- Grab your two **HEAD BACK** pieces (C). Align them together with right sides facing and raw edges matching up.
- If you haven't already, locate the **opening for turning** markings found on the paper pattern. Transfer them over to the wrong side of the fabric. Sew along this edge of the **HEAD BACK** pieces only, but be sure to leave the opening for turning that you marked.
- Open up your **HEAD BACK** piece.



7. SEW THE HEAD

- Grab the **HEAD FRONT** piece you have so far. Align it with the head back with right sides facing. Be sure the top of the back pieces (marked with a **circle symbol**) are aligned with the top of the front piece. The **back seam** should also match up with the **top and bottom dart** on the front.
- Sew around the perimeter of the head completely.
- Turn the head right side out through the opening you left in the back.

sew desu ne?

| WWW.CHOLYKNIGHT.COM |



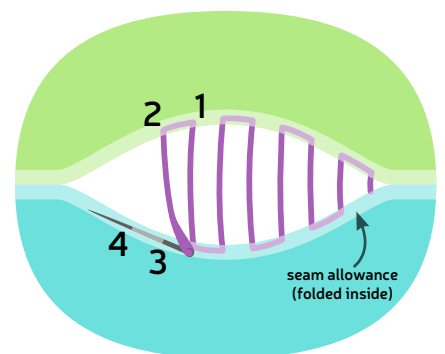
8. STUFF THE HEAD

- Stuff the head firmly with stuffing. Focus most of it on the face area until it fills out and has no wrinkles in the fabric.
- After the face looks full, fill the rest of the head.
- Once the plush is stuffed, make sure the seam allowances in the opening are tucked inside and prepare to ladder stitch it closed. Thread a hand-sewing needle and knot it at the end. Insert the needle from the inside of the opening and out of the plush near one edge of the opening. This will leave the knot inside the plush.



9. CLOSE UP THE HEAD

- Continue from here doing a ladder stitch. Take a 1/8" stitch into the fold of one side of the opening, then go across and take another. Keep going down the opening until you reach the end.
- When you're finished, stitch a knot into the end of the seam. Then insert the needle near the finished knot and out of the plush about 1-2" away.
- Pull the thread through and hold it taut while snipping the thread. The excess thread should sink back inside the plush -- all hidden!



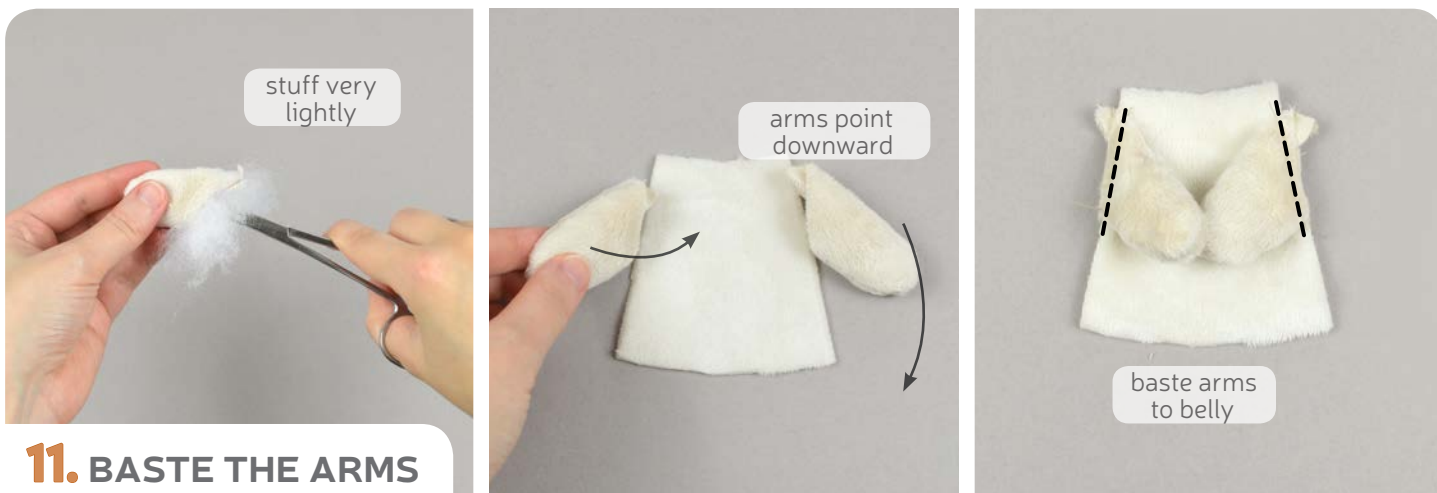
sew desu ne?

| WWW.CHOLYKNIGHT.COM |



10. SEW THE ARMS

- Grab all of your **ARM** pieces (D). Take two and line them up with right sides facing and raw edges aligning.
- Sew the arm together along the curved edge. Leave the straight edge free for turning the arm right side out later.
- Turn the arm right side out through the opening. Repeat with your remaining arm pieces for two sewn arms total.



11. BASTE THE ARMS

- Stuff the arms lightly with stuffing. Keep them empty near the opening, since we'll be attaching them to the body next.
- Grab the **BODY** (E) piece you have from the light accent fabric (the same as the inner ears). This will be the belly of your fox.
If you haven't already, locate the **arm placement lines** located on the paper pattern for the body (E). Transfer them over to the right side of the fabric.
Align the open end of the arm within these placement lines so they point downward.
- Flip the arms to the inside so the raw edges match up. Baste the arms to the belly within the seam allowance to hold the arms for future steps.

sew desu ne?

| WWW.CHOLYKNIGHT.COM |



12. SEW THE BODY SIDES

- Grab your other two **BODY** pieces (from the main body fabric). Take one and align it over the belly piece with right sides together and raw edges matching up. This should trap the arm inside.
- Sew the body to the belly along the straight edge only. Sew through all the layers with the arm in between. Repeat with your other body piece on the other side of the belly.
- When complete, you should have a row of body pieces with the arms secured inside.



13. SEW THE FEET

- Grab all of your **FEET** pieces (F). Take two and line them up with right sides facing and raw edges aligning.
- Sew the feet together along the curved edge. Leave the straight edge free for turning the foot right side out later.
- Turn the foot right side out through the opening. Repeat with your remaining feet pieces for two feet total.

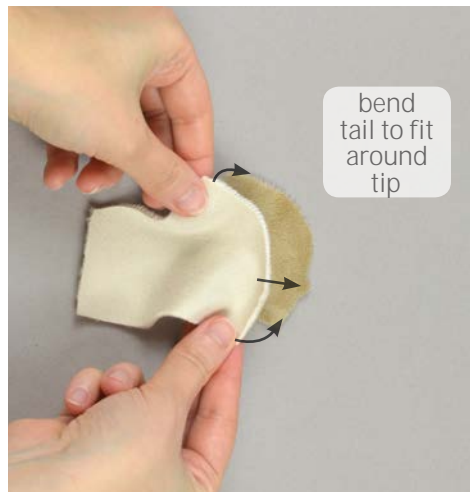
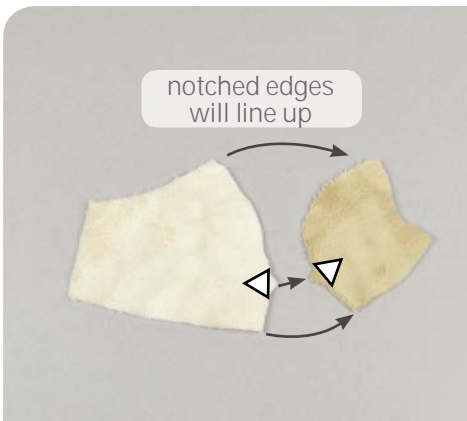
sew desu ne?

| WWW.CHOLYKNIGHT.COM |



14. BASTE THE FEET

- Stuff the **FEET** lightly with stuffing. Keep them empty near the opening, since we'll be attaching them to the **BODY** next.
- Grab the body piece you have so far. Align the open end of the feet just outside of the center belly piece. The toes should be pointing toward the body.
- Baste the feet to the body within the seam allowance to hold them in place for later steps.



15. SEW THE TAIL TIP

- Grab your **TAIL** (G) and **TAIL TIP** pieces (H). Note the **notches** found on the paper pattern for these pieces. The edges with the **notches** will be sewn together next.
- Curve the **notched edge** of the tail to fit around the **notched edge** of the tail tip. Line up the notches to help ensure the pieces don't get flipped. Pin the fabrics together.
- Sew the tail base to the tail tip along the curved notched edge. Repeat with your other tail pieces so you have both halves of the tail.

sew desu ne?

| WWW.CHOLYKNIGHT.COM |



16. SEW THE TAIL

- Take both of your **TAIL** pieces and match them up with right sides facing and raw edges aligning. The **tail tip seam** from step 15 should also match up. Pin the fabrics together.
- Sew the tail pieces together along the pointed edge. Leave the short straight edge free for turning the tail right side out later.
- Trim the excess seam allowance at the tip of the tail to reduce bulk when the tail is turned later.



17. BASTE THE TAIL

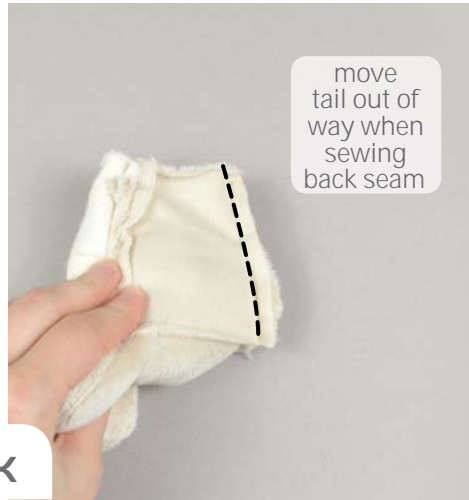
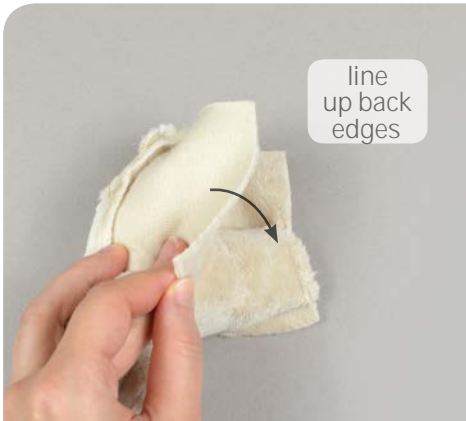
- Turn the **TAIL** right side out. Stuff it lightly with stuffing, mostly in the tip. Keep the open end free so it's not as bulky when it's attached to the body next.
- Grab your **BODY** piece so far. Place the open end of the tail along one straight edge of the body, about $\frac{1}{2}$ " up from the bottom. Make sure the tip of the tail is pointing up.
- Baste the tail to the body within the seam allowance to hold it for the next step.

TIP:

Sewing the tail into the body makes step 20 a little crowded. But you could also attach the tail by hand afterwards. It's similar to steps 21-22 with attaching the body to the head.

sew desu ne?

| WWW.CHOLYKNIGHT.COM |



- a. Fold the **BODY** in half so the straight edges match up and the **TAIL** is sandwiched inside.
- b. Sew the body along the back edge so the tail is secured in the middle. Allow the tail to poke out of the bottom so it's easier to sew. Go a short bit at a time for easier sewing. When complete, the body should make a ring.

18. SEW THE BODY BACK



19. SEW THE BEAN POUCH

- a. Grab your **BOTTOM** pieces from your scrap fabric. These are the pieces for the bean pouch. Align the two pieces together with either side facing (doesn't matter). Sew the pieces together around the edge, leaving a 1-2" opening (also marked on the paper pattern) for filling the pouch.
- b. Get your poly pellets and a funnel (I prefer a spoon, but both work). Fill the pouch with poly pellets until it's not quite full.
- c. Stitch the pouch closed by hand for extra safety using a back stitch, or take it to your machine. Stitch it closed very slowly, using only the hand wheel if necessary. Sewing over a pellet will very likely break a needle.

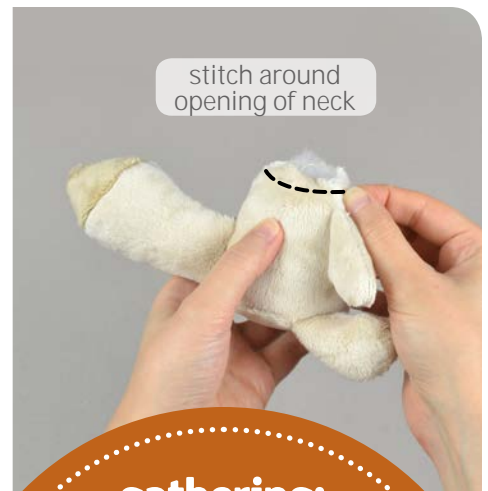
sew desu ne?

| WWW.CHOLYKNIGHT.COM |



20. SEW THE BOTTOM

- Tuck the **TAIL** and **FEET** into the **BODY** piece so the bottom opening is free. Grab your **BOTTOM** piece (I). Take the larger open end of the body (the edge with the feet attached) and align it around the circle for the bottom. Pin the edges together.
- Sew the body around the bottom about $\frac{1}{2}$ " at a time to secure it. Carefully move the tail and feet out of the way so you don't accidentally sew over them..
- When complete, turn the body right side out through the opening in the neck.



21. STUFF THE BODY

- Place the finished **BEAN POUCH** on the bottom of your fox **BODY**.
- Stuff the rest of the body with stuffing so it's semi-firm.
- Thread a hand sewing needle with thread and knot the end. Sew a long gathering stitch around the opening of the **BODY**, about $\frac{1}{4}$ " away from the edge.

gathering:

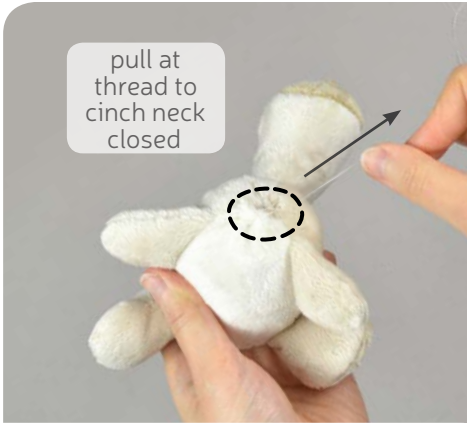
The process of shortening the length of a piece of fabric by sewing long stitches through it. When the thread is pulled, it forms small folds that ruffle the fabric.

gathering stitch:

A long version of the running stitch, which is a stitch done by weaving the needle in and out of a length of fabric going along a line. The long stitches (about $\frac{1}{4}$ " - $\frac{1}{2}$ " long) gather the fabric when pulled later.

sew desu ne?

| WWW.CHOLYKNIGHT.COM |



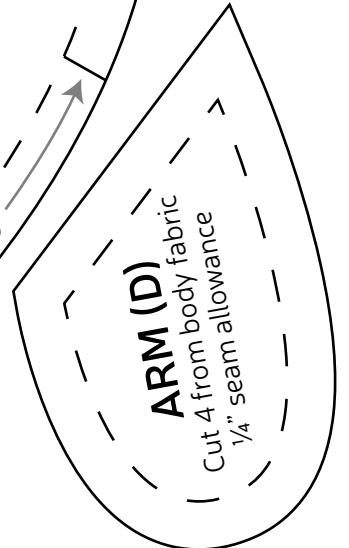
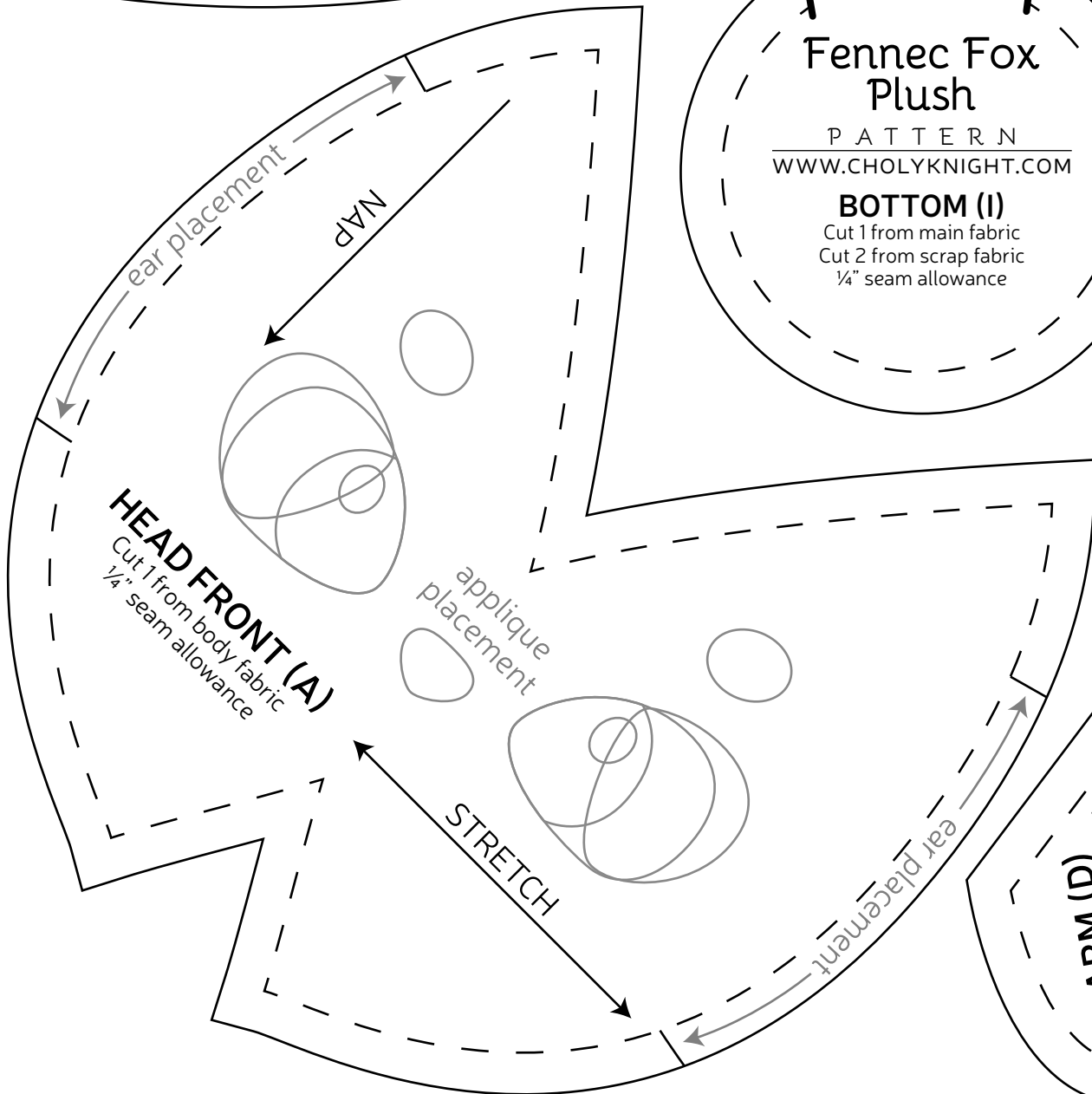
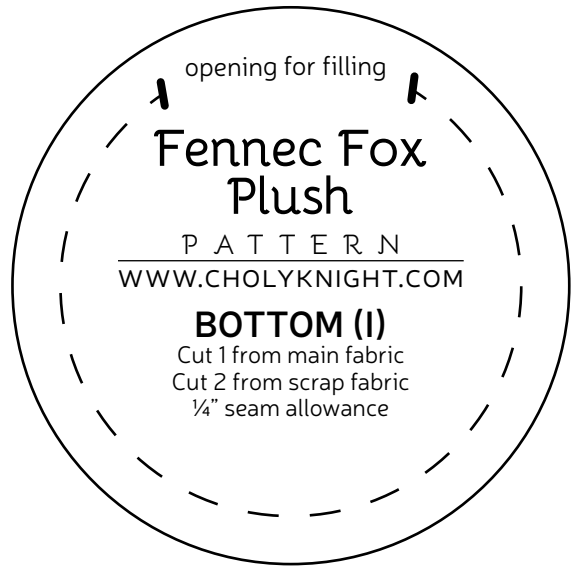
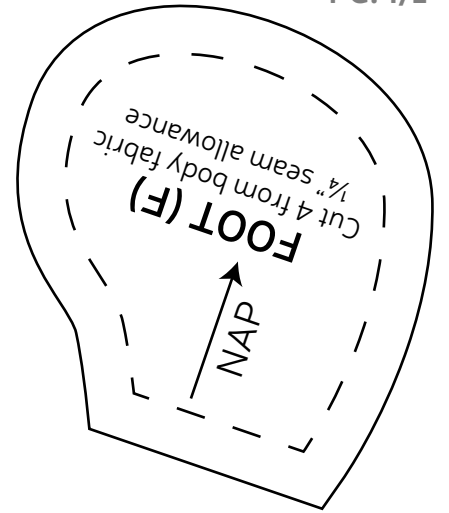
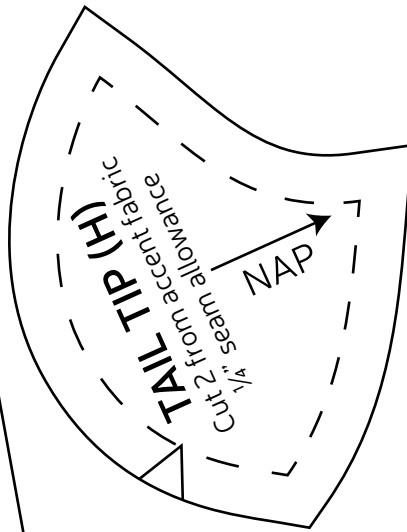
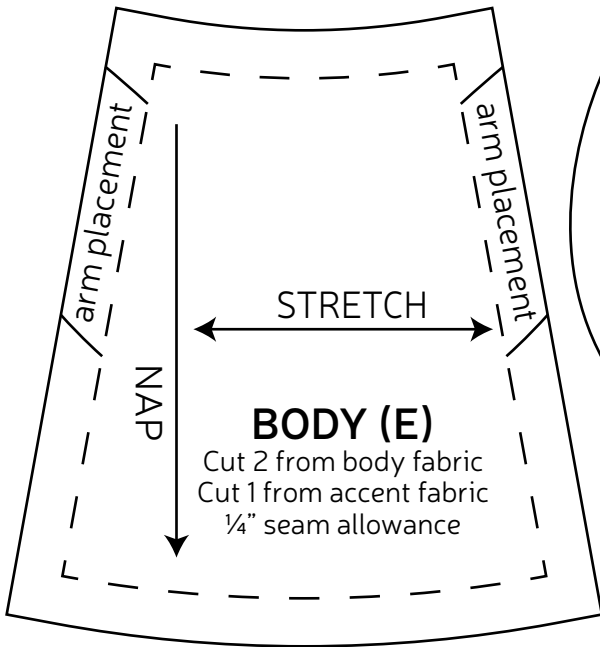
22. ATTACH THE HEAD

- Once finished, pull at the thread to gather the fabric and cinch up the opening. Sew a few knots at this opening to hold it closed. If you have a lot of thread left, consider leaving it attached for adding to the head.
- Align the **HEAD** over the **BODY** so they're both facing forward. The **back seam of the head** should also match up with the **back seam on the body**.
- Ladder stitch the head to the body, going around the opening in the neck. Stitch a wide circle to ensure the neck is secure and not wobbly.
 - *TIP: take big basting stitches for the first pass to make sure the head placement is right. Check to see that you like it, then go around again with neater, tinier stitches for the second pass.*
- Continue stitching around the neck until you reach where you started.



sew desu ne?

| WWW.CHOLYKNIGHT.COM |



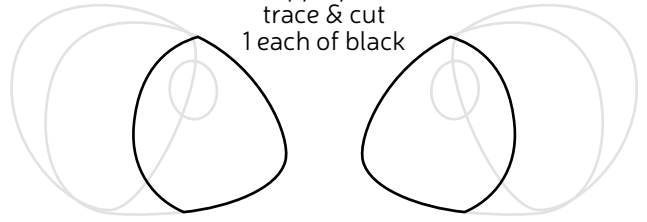
EYE OUTLINE

applique
trace & cut
1 each of accent
color



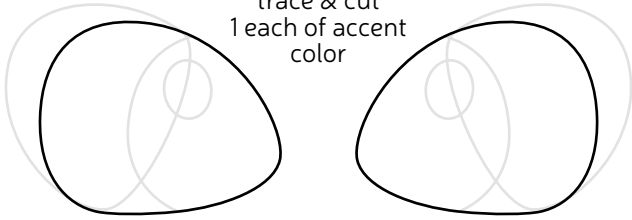
PUPILS

applique
trace & cut
1 each of black



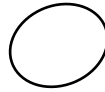
IRISES

applique
trace & cut
1 each of accent
color



EYE SHINE

applique
trace & cut
2 of white



NOSE

applique
trace & cut
1 of black

