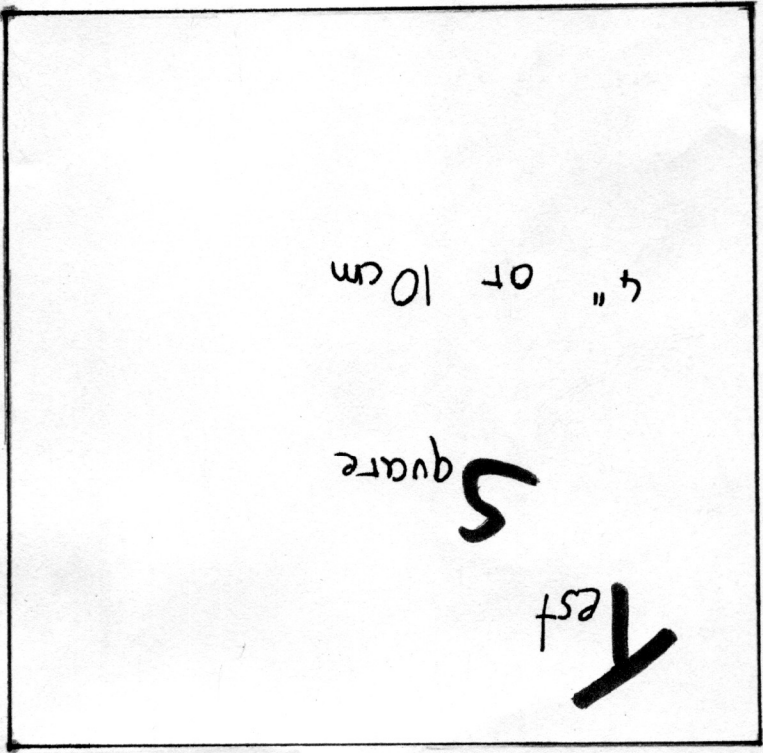
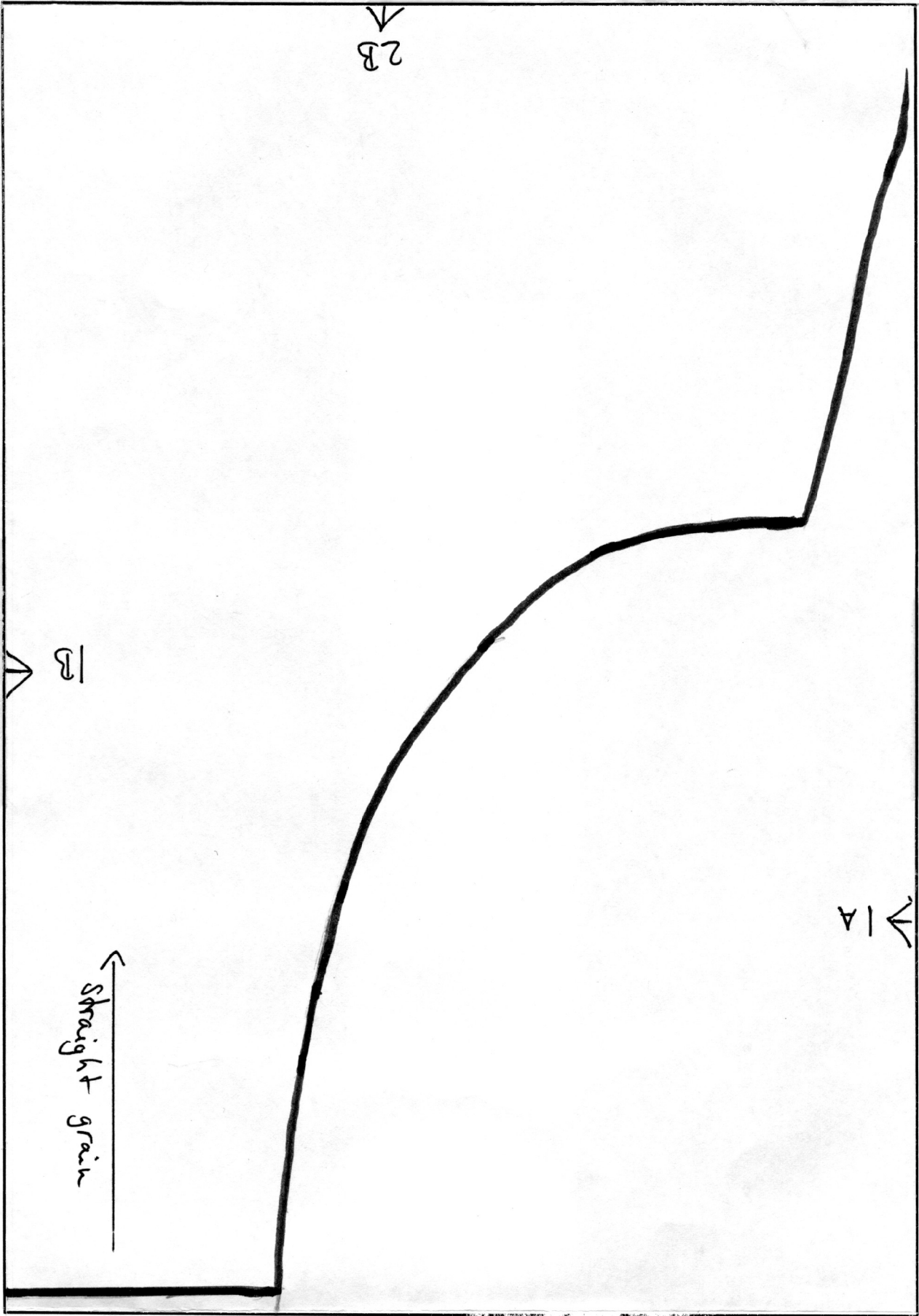


2A



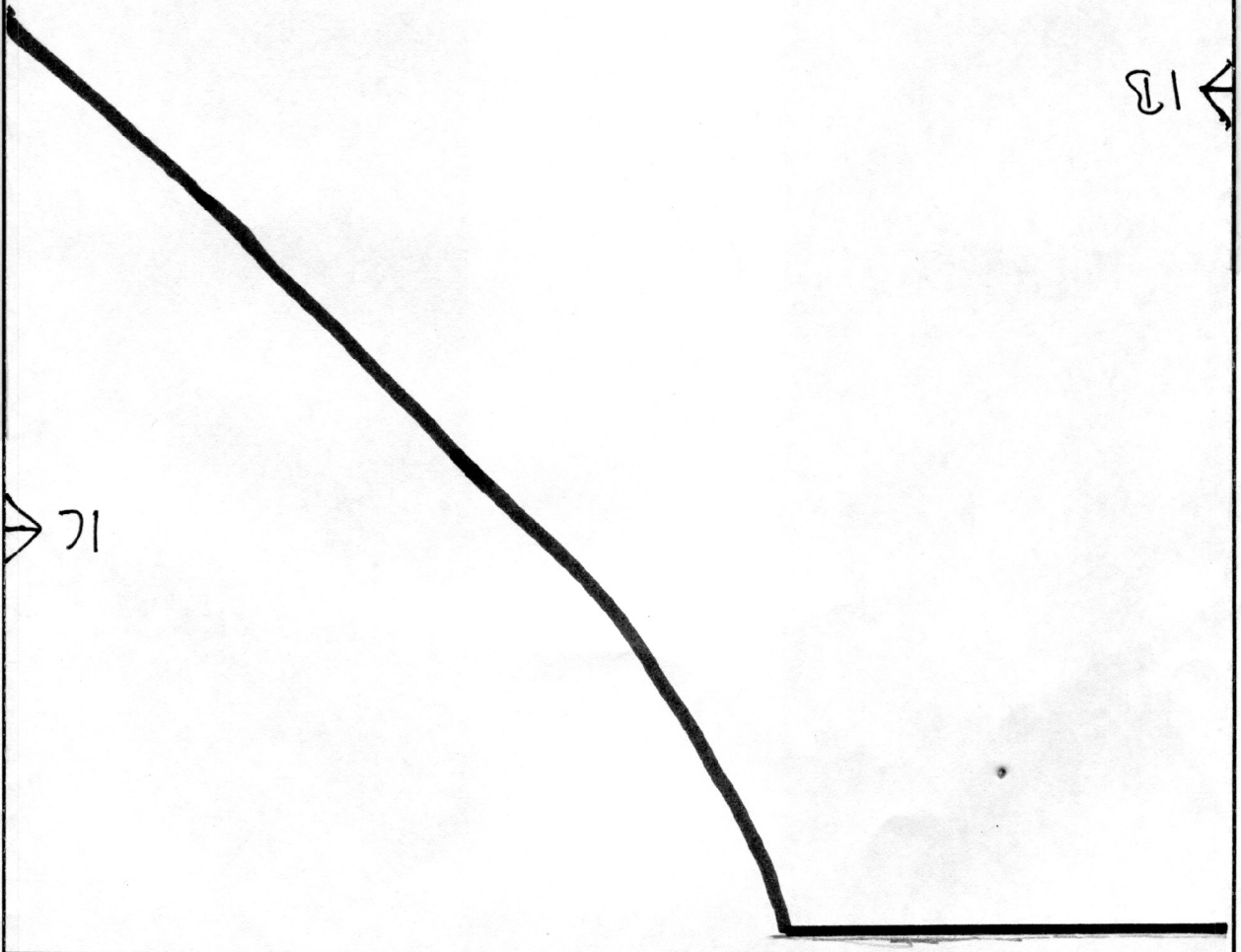
1A

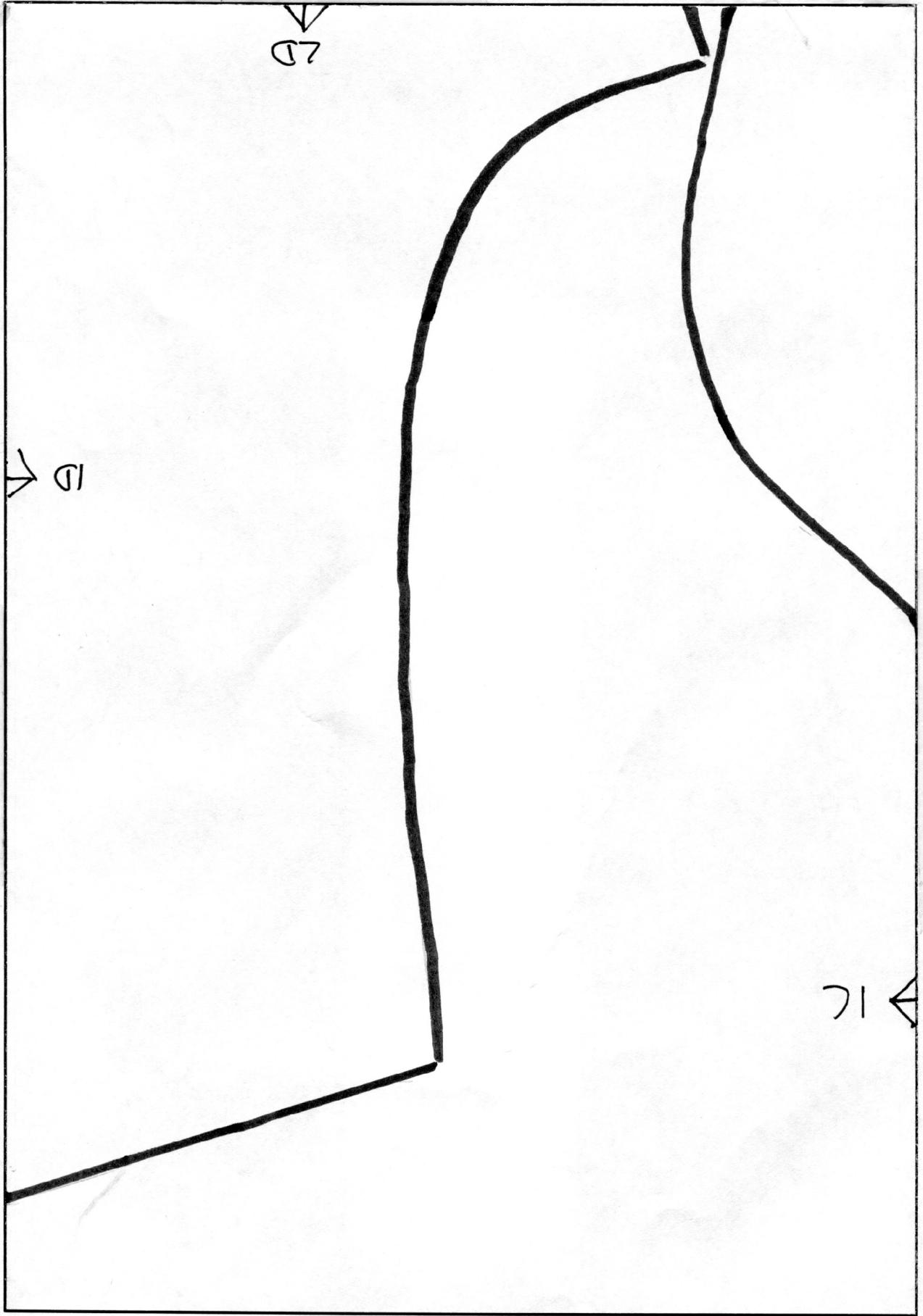


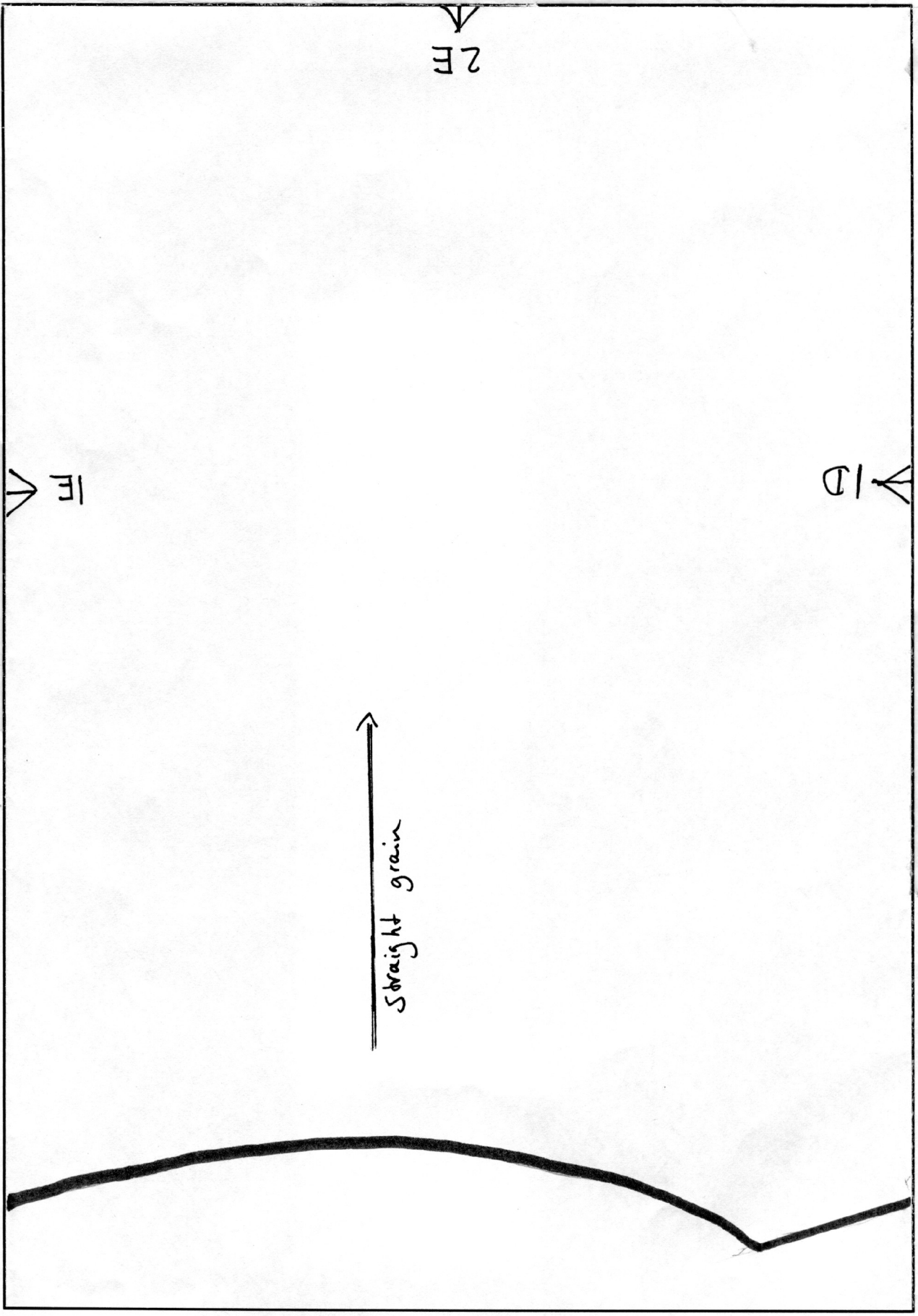
22

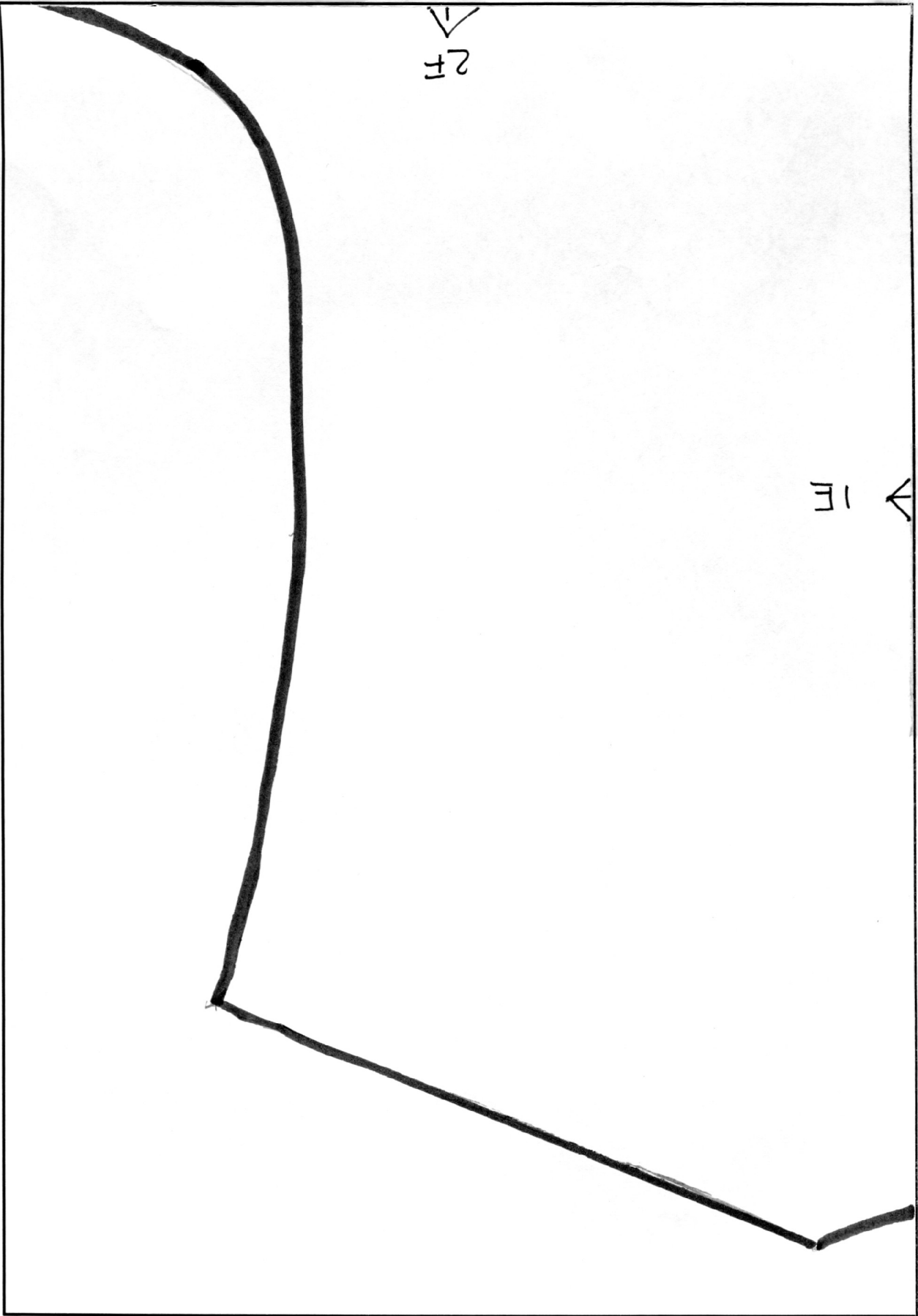
13

71



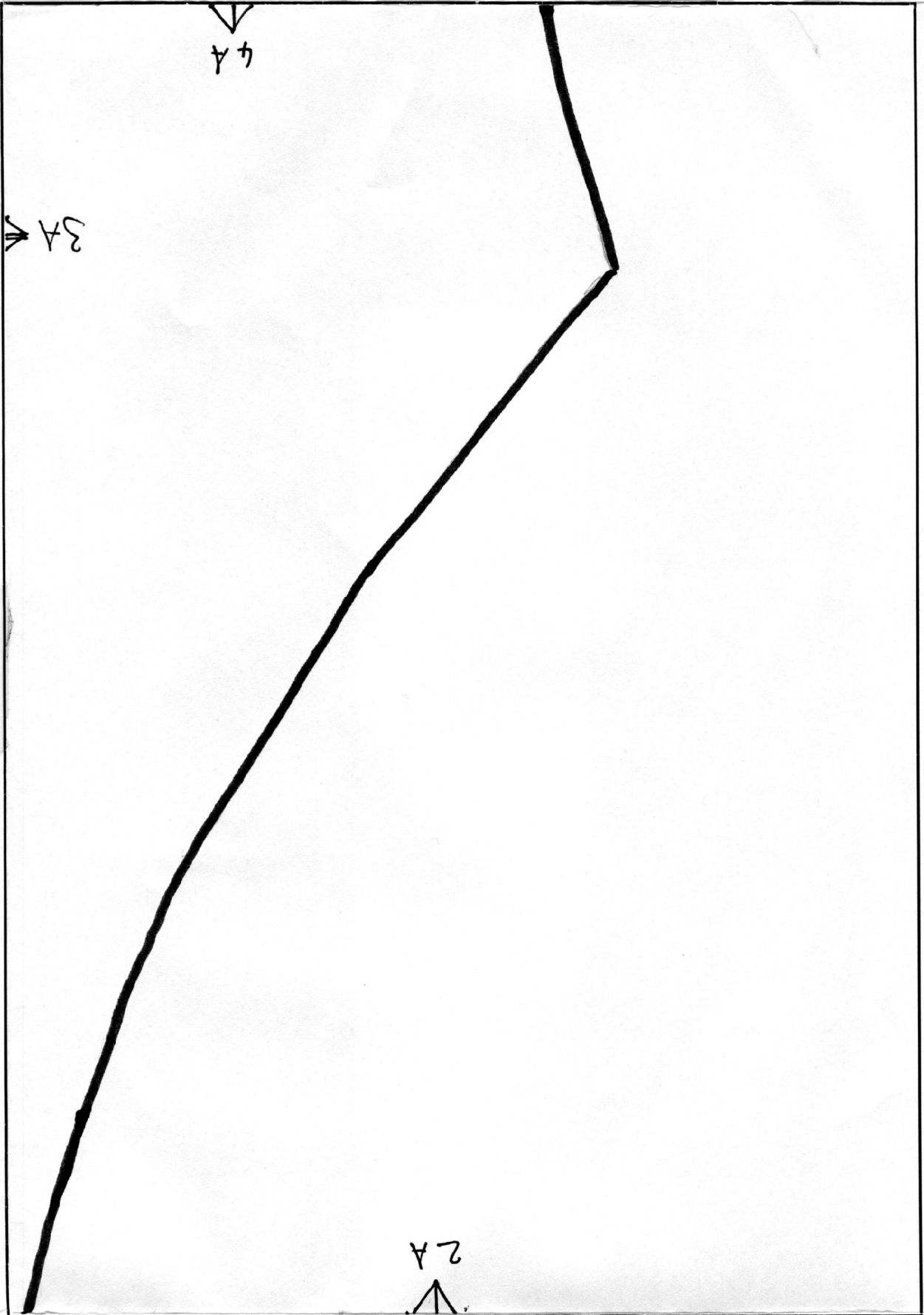






✓  
2F

→ E



4B

3B

3A

No seam allowance included  
Add about 1.5c

Cut 2x (one for the right, one for the left)

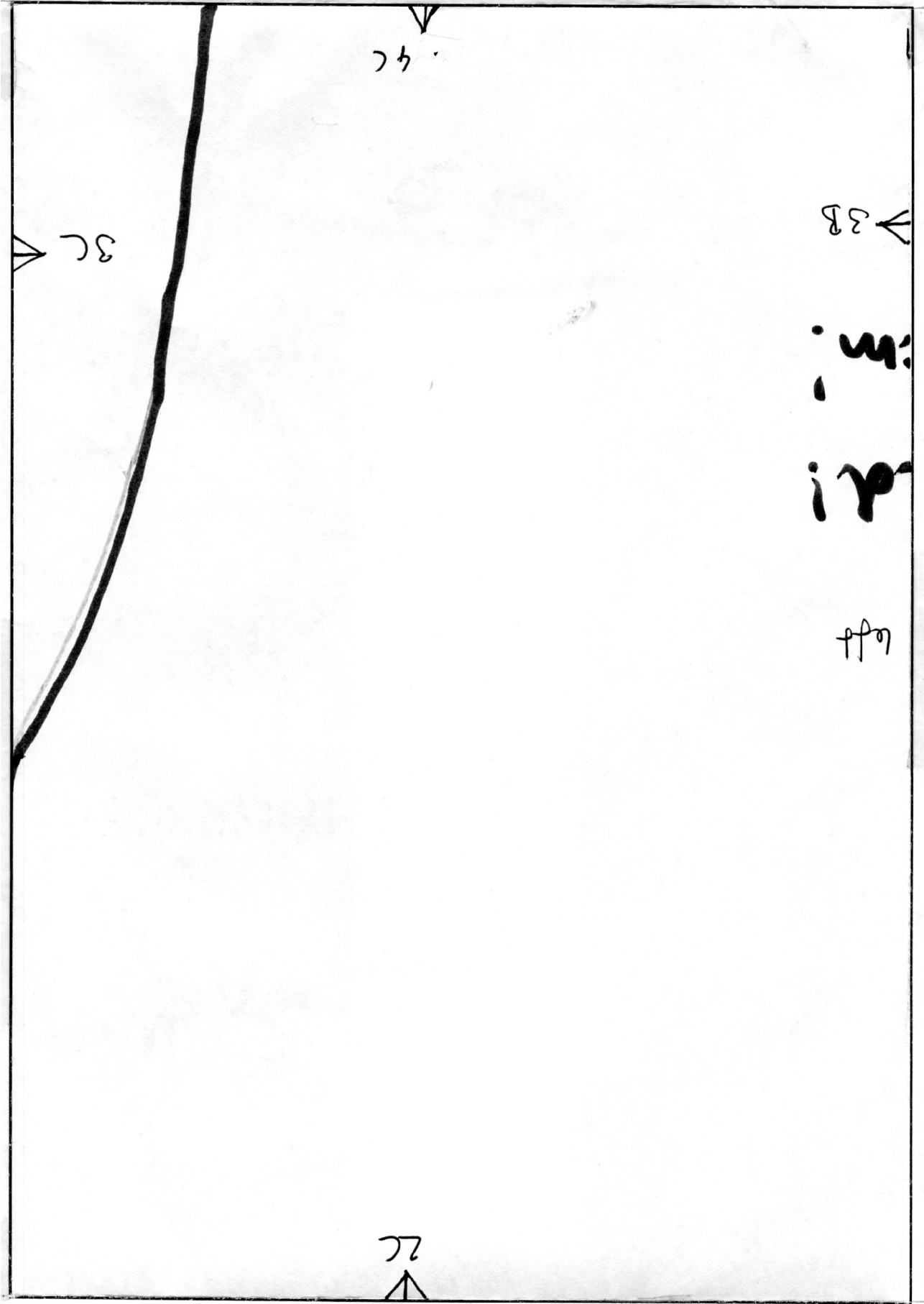
front

Wapping-Shift

Somewhat kind

2B





3C →

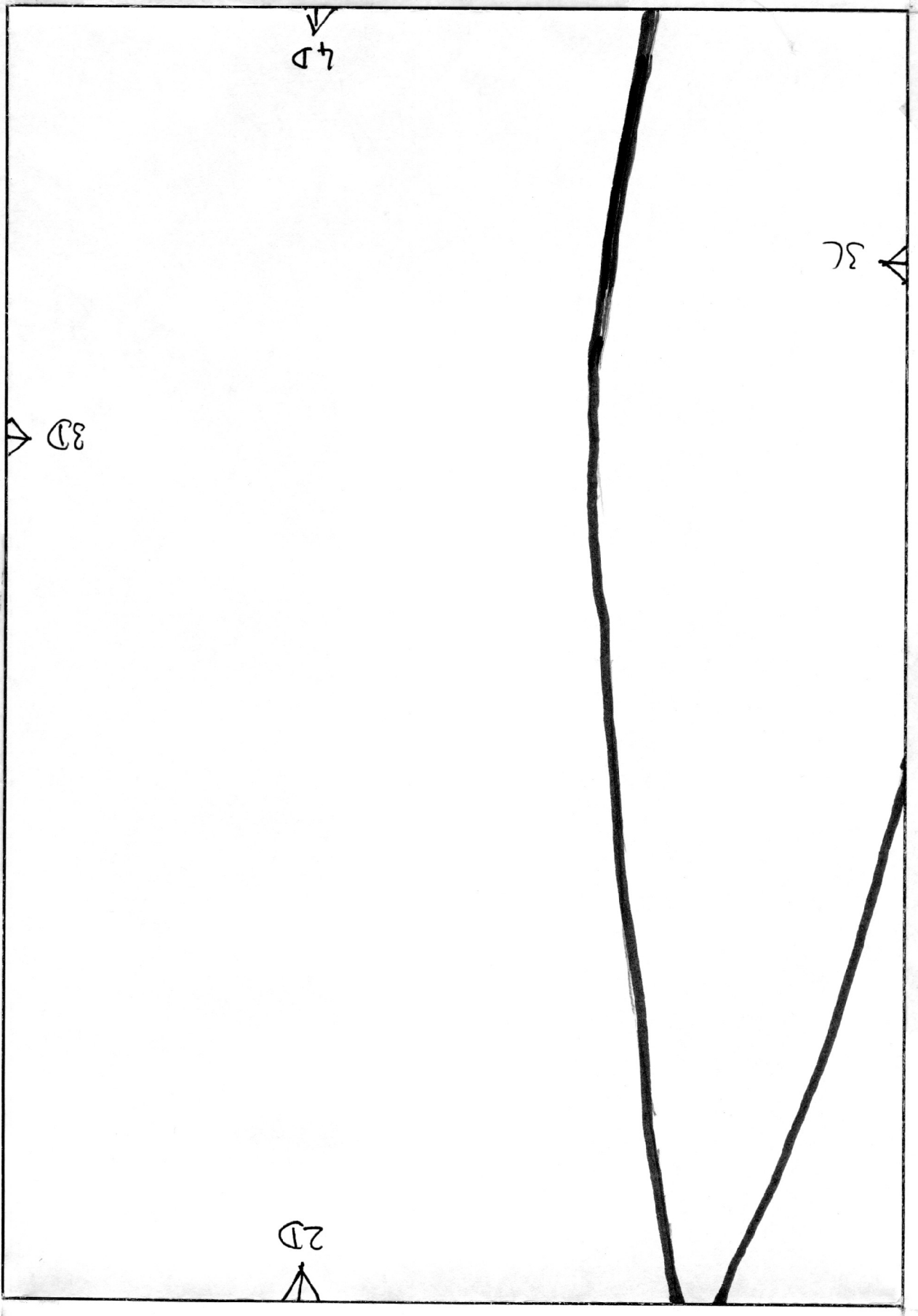
4C ↓

3B →

m  
i

off

2C ↑



4D

3C

1B

2D

4E  
∇

3E  
▷

▷3D

No seam allowance included  
! Add about 1.5 cm!

Cut 1x

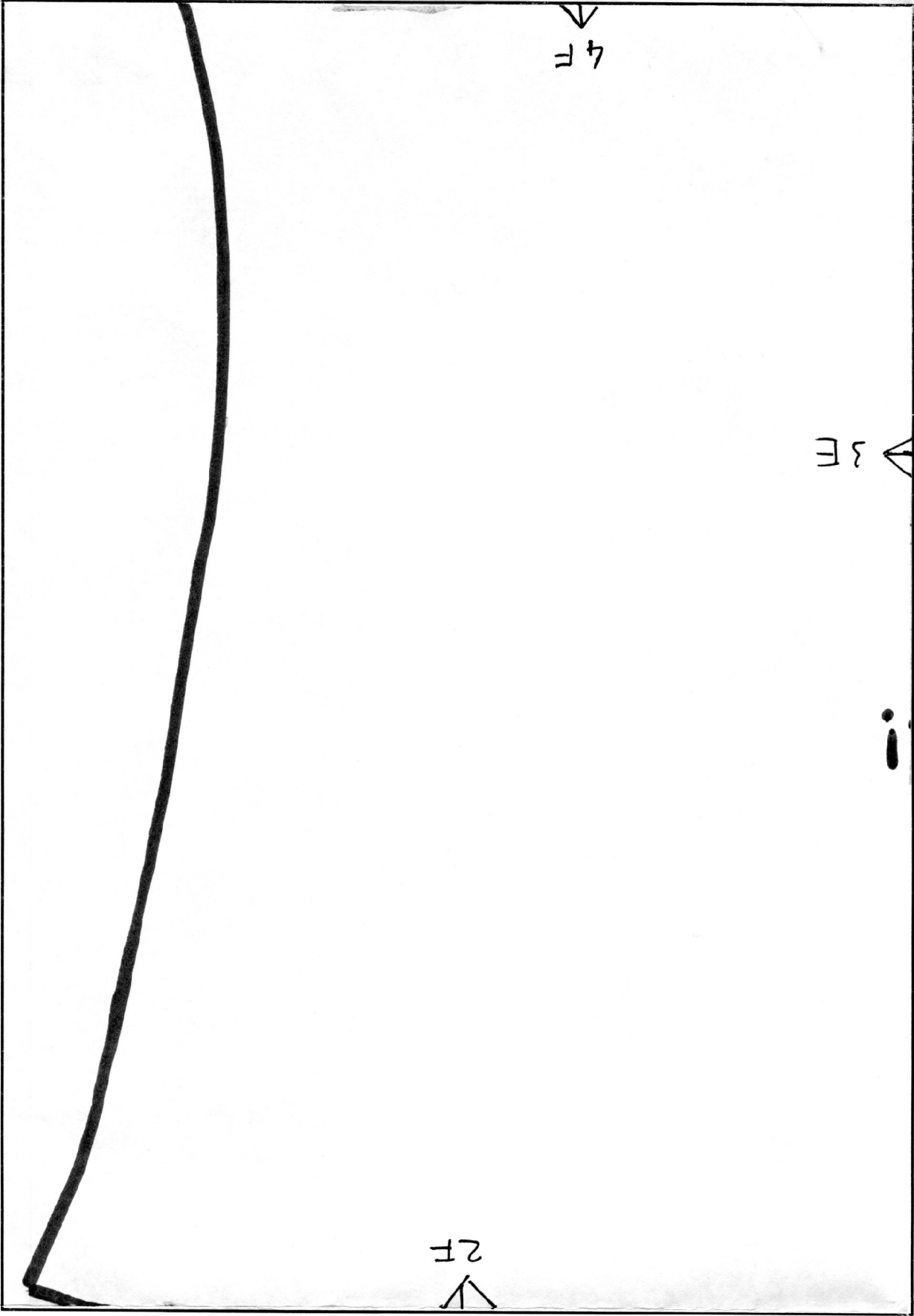
Back

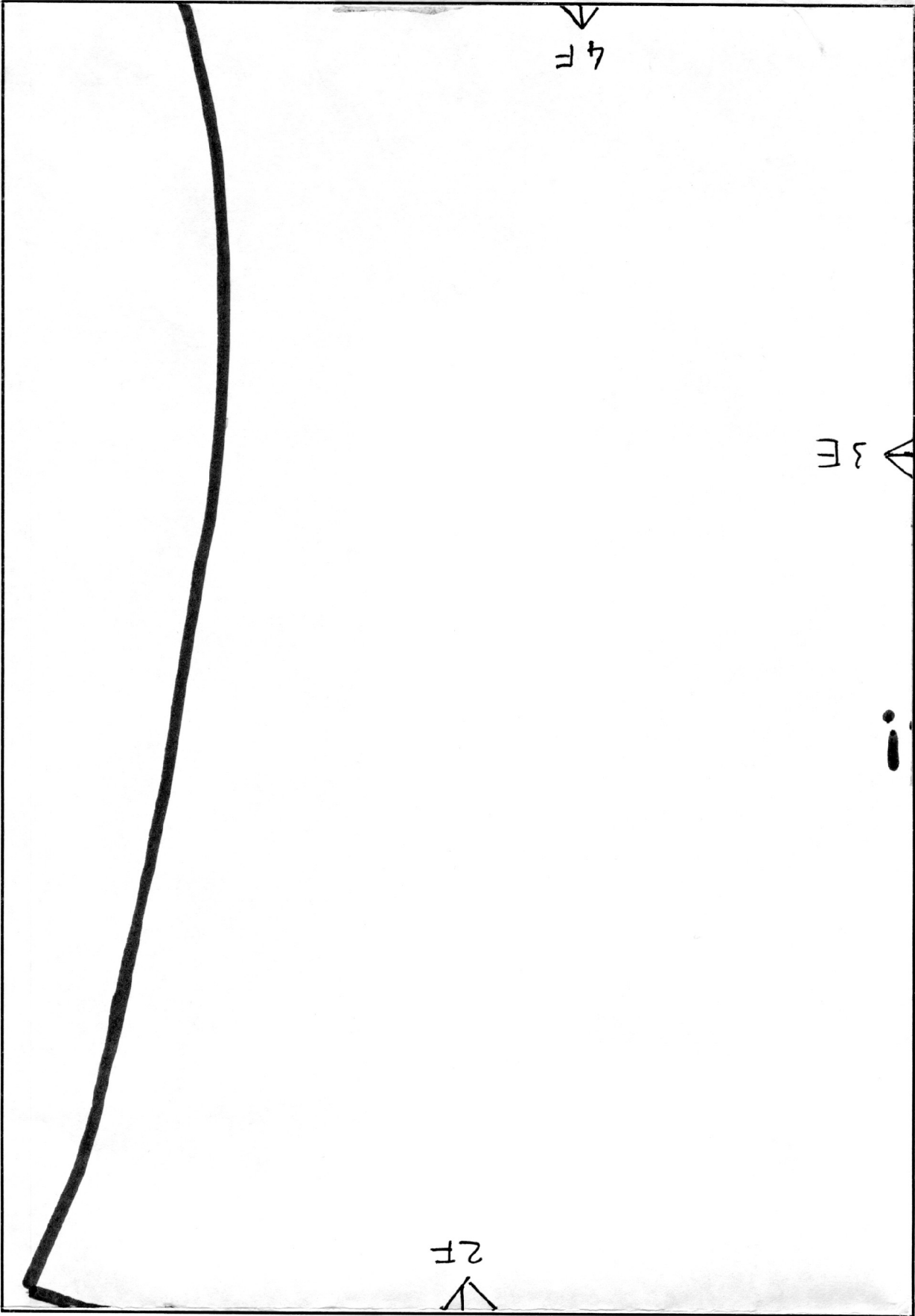
Wrapping - Shift

Summerkind

2E

∇





6B

5B

5A

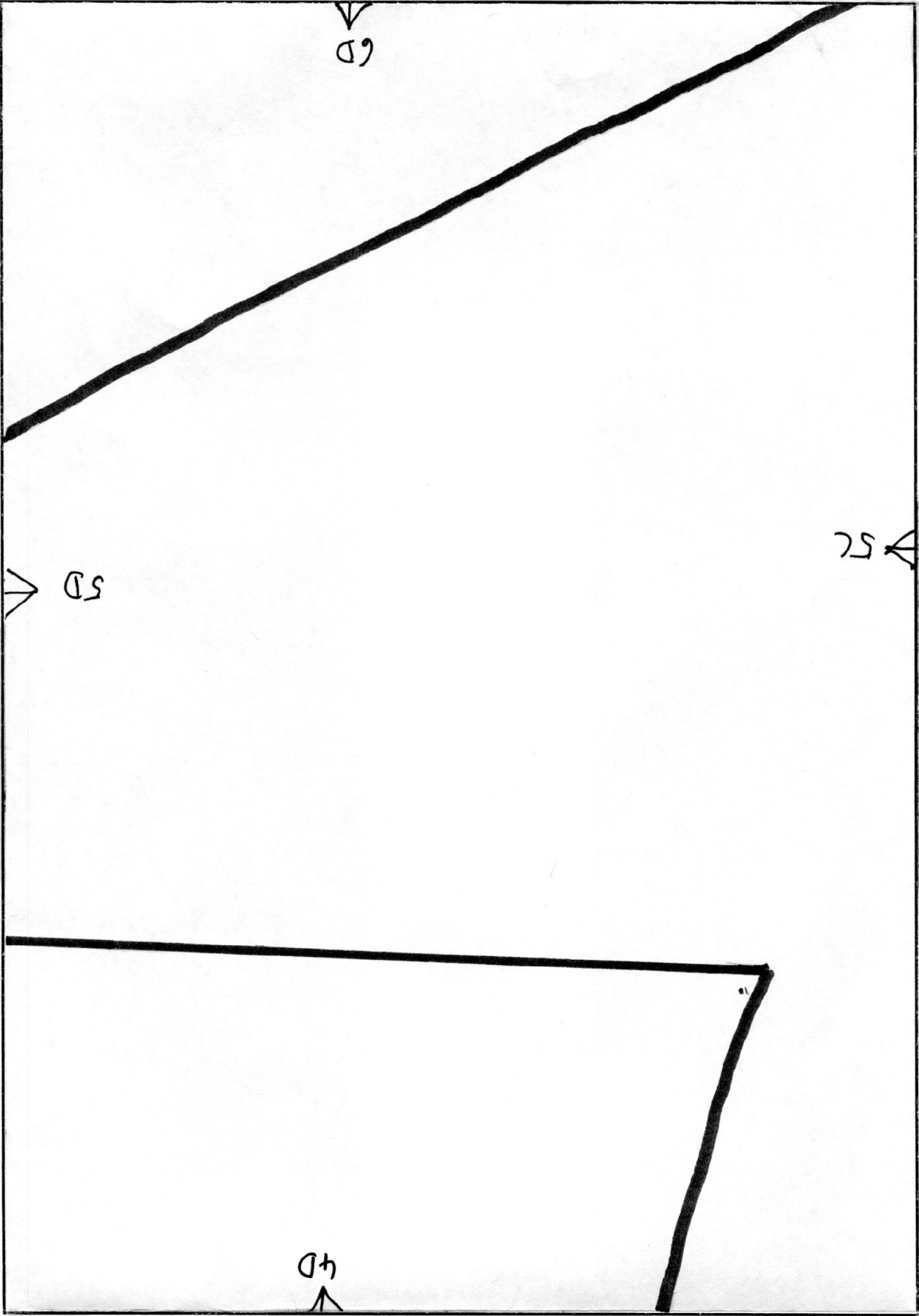
4B

79

SC

58

77





6E  
∇

Cut 2x

SE ←

S<sub>beve</sub>

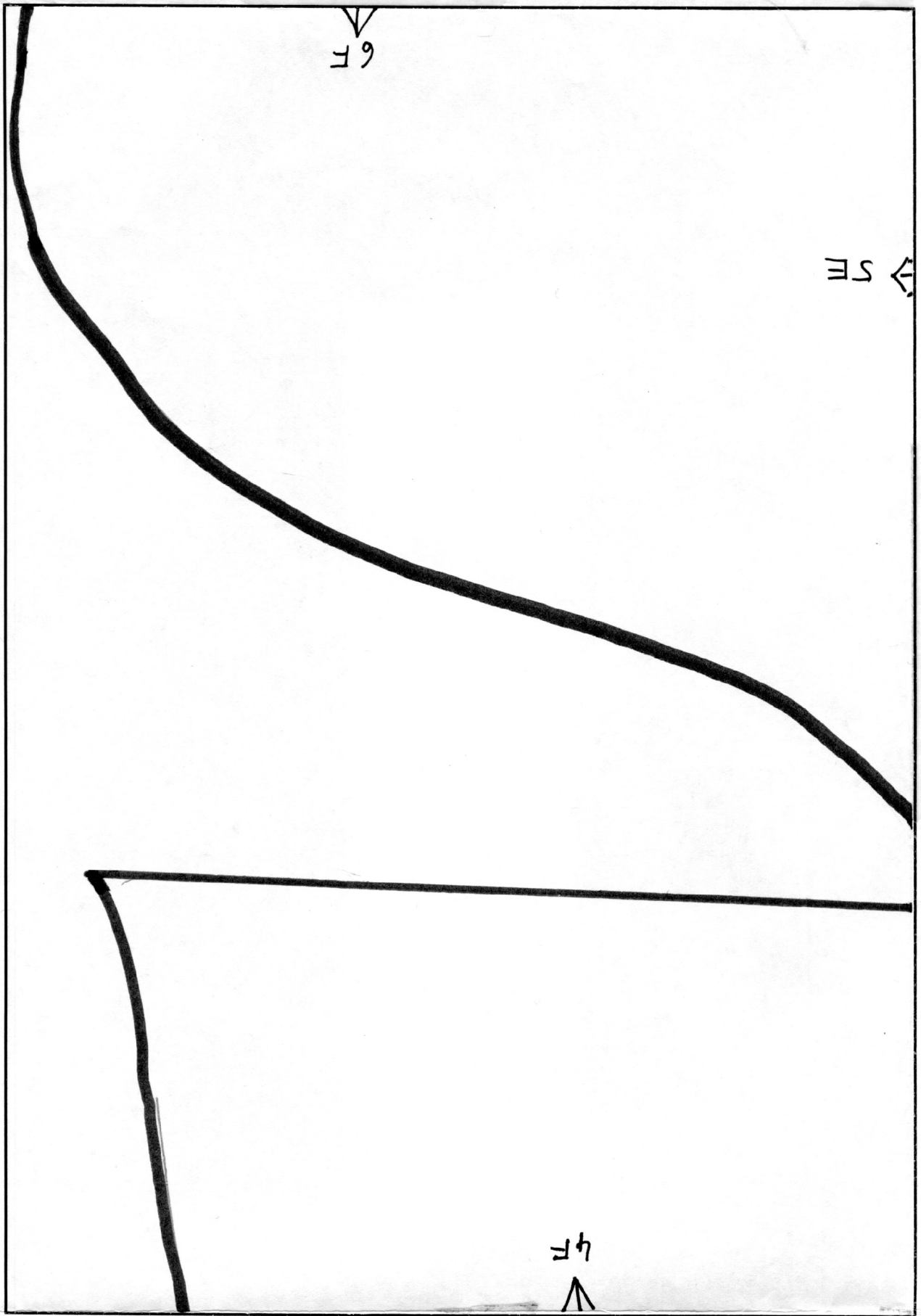
Wapping - Shift

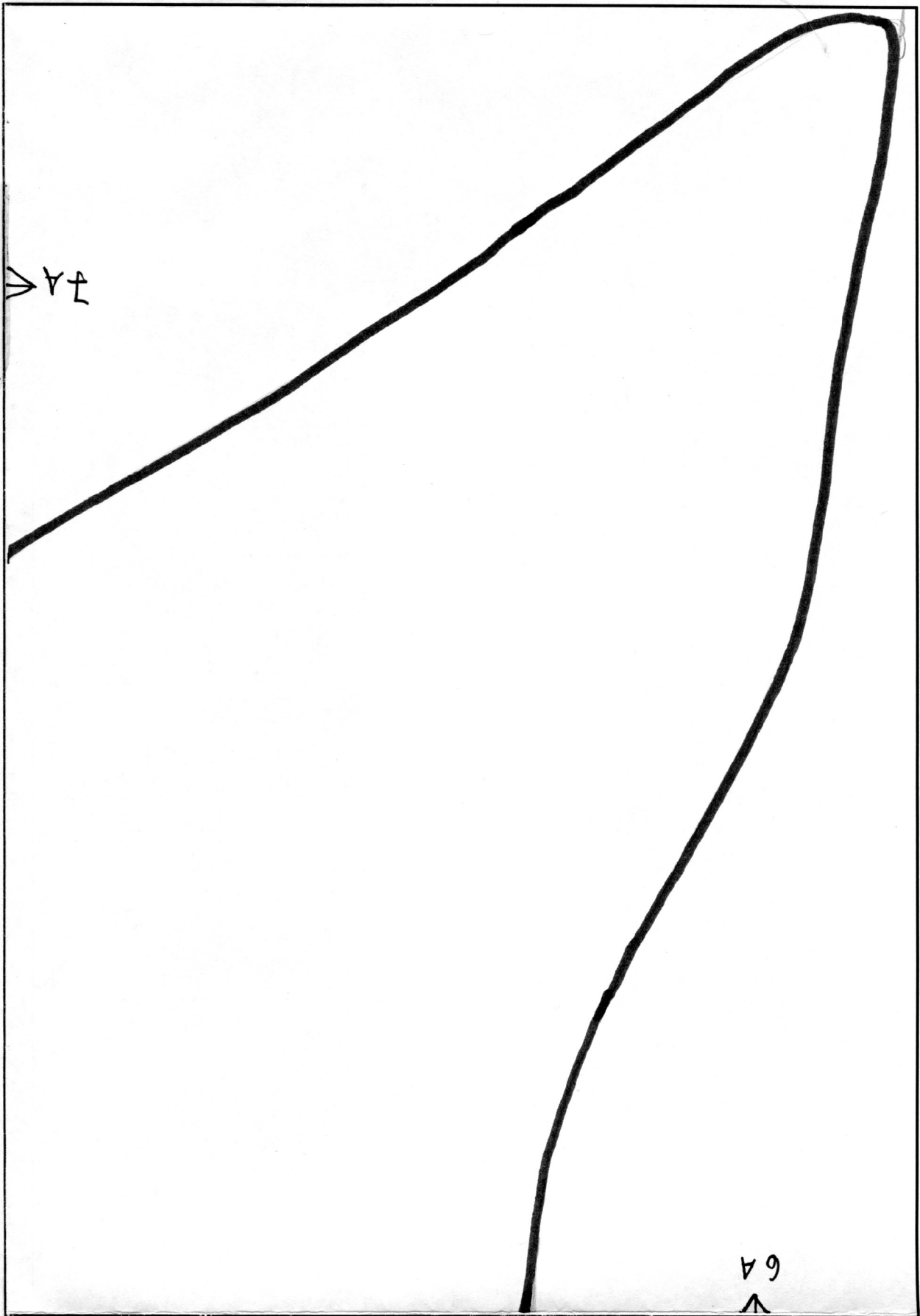
S<sub>ommerkind</sub>

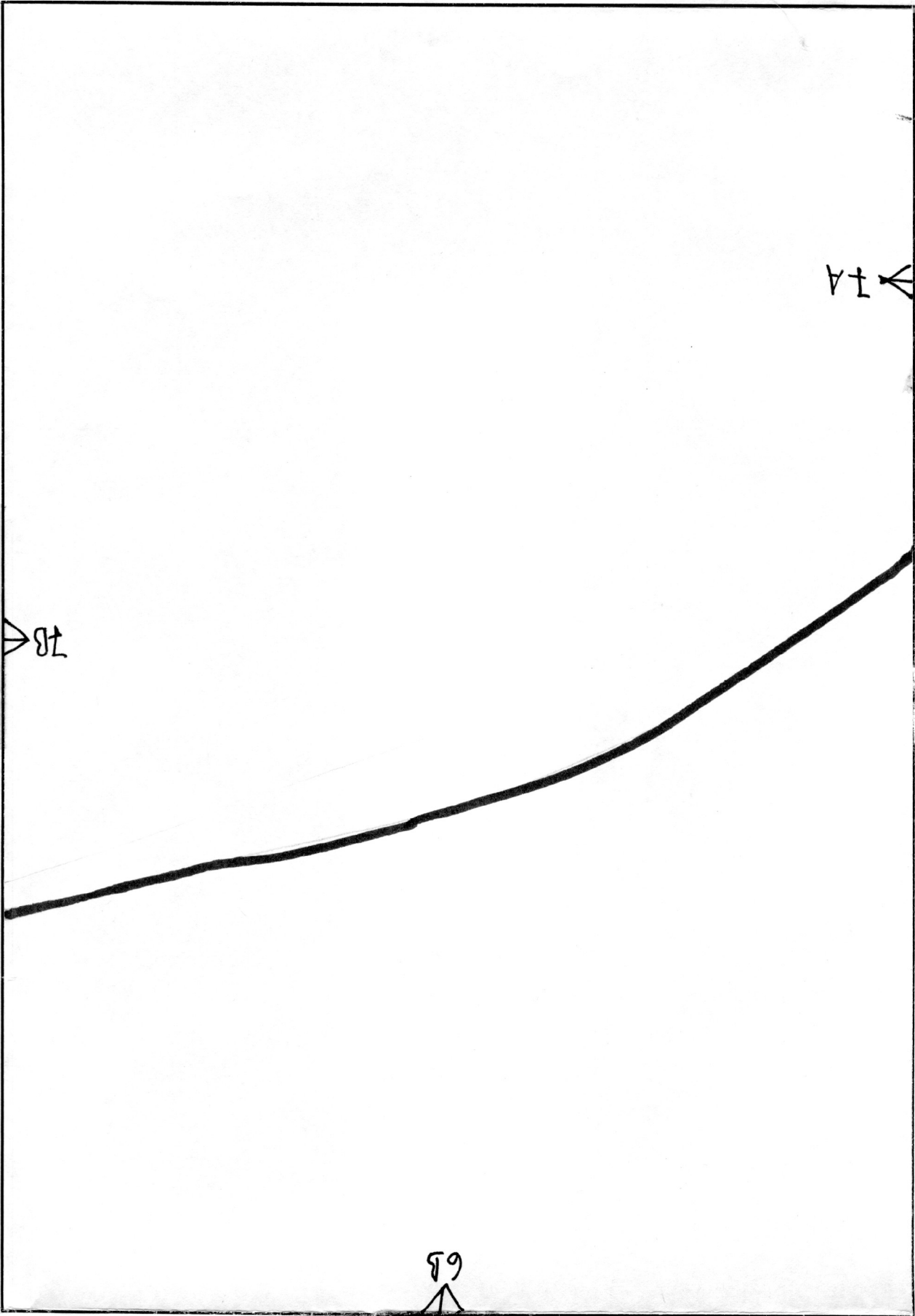
SD →

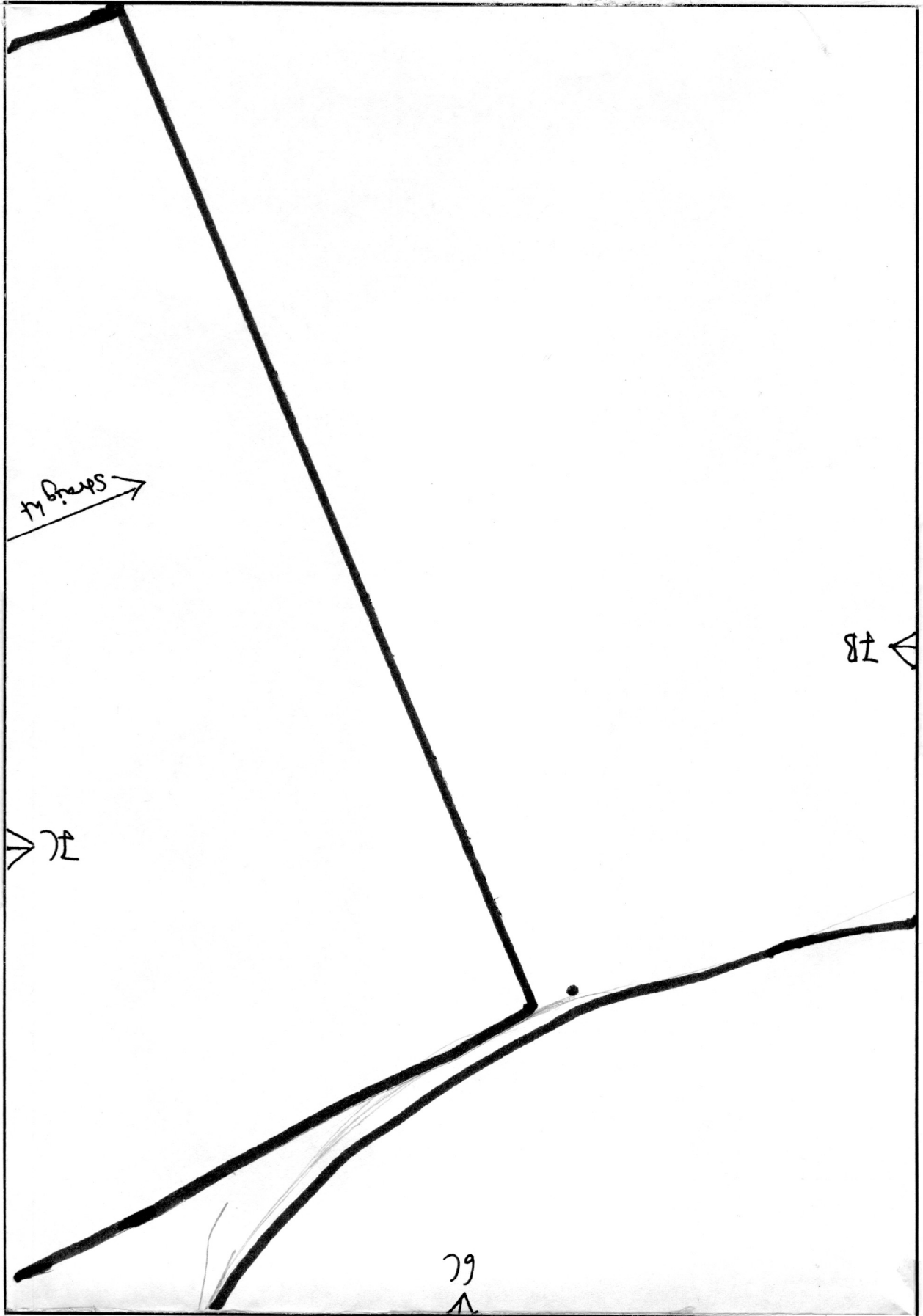


4E  
∇









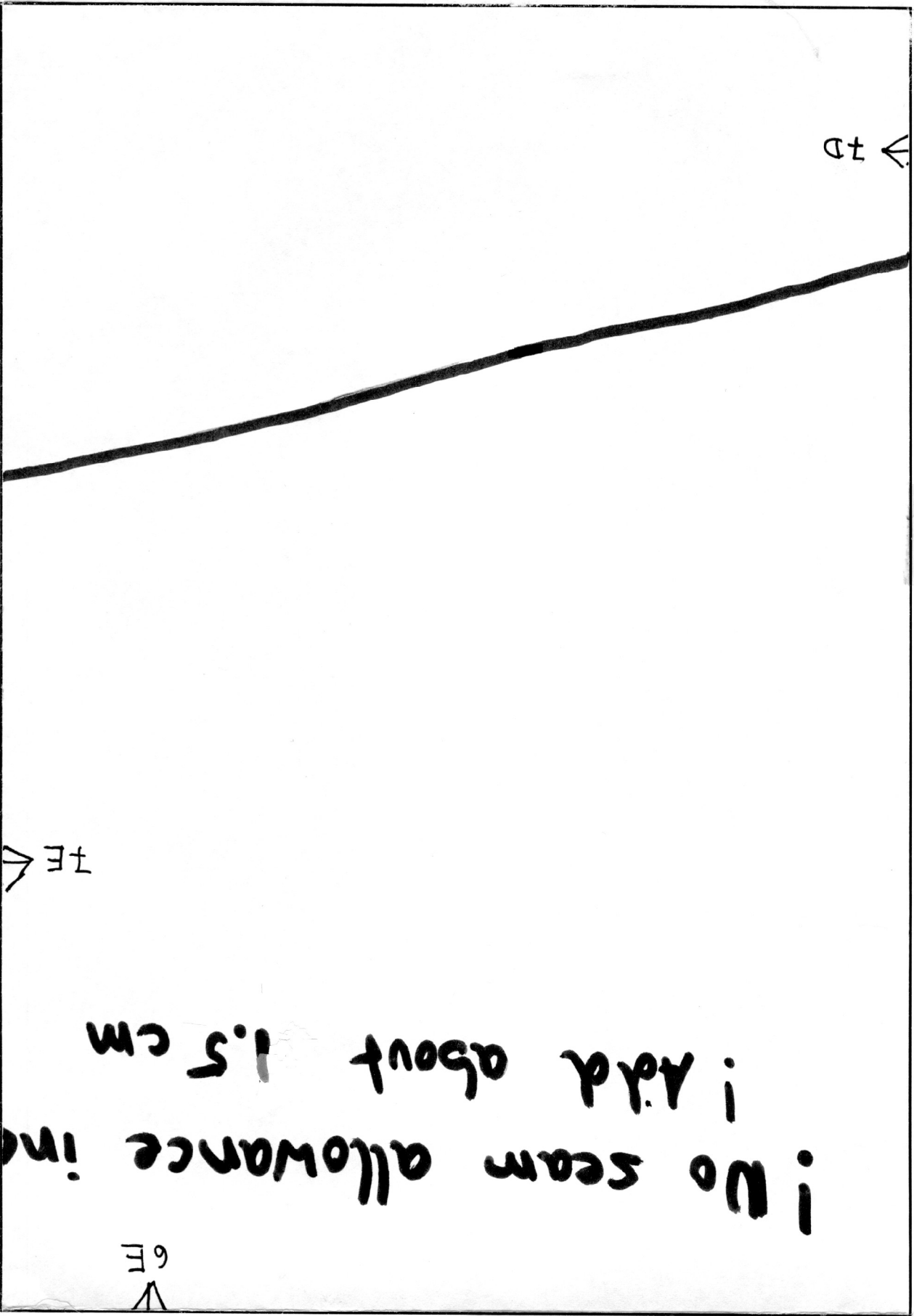
10



Draw

11

12

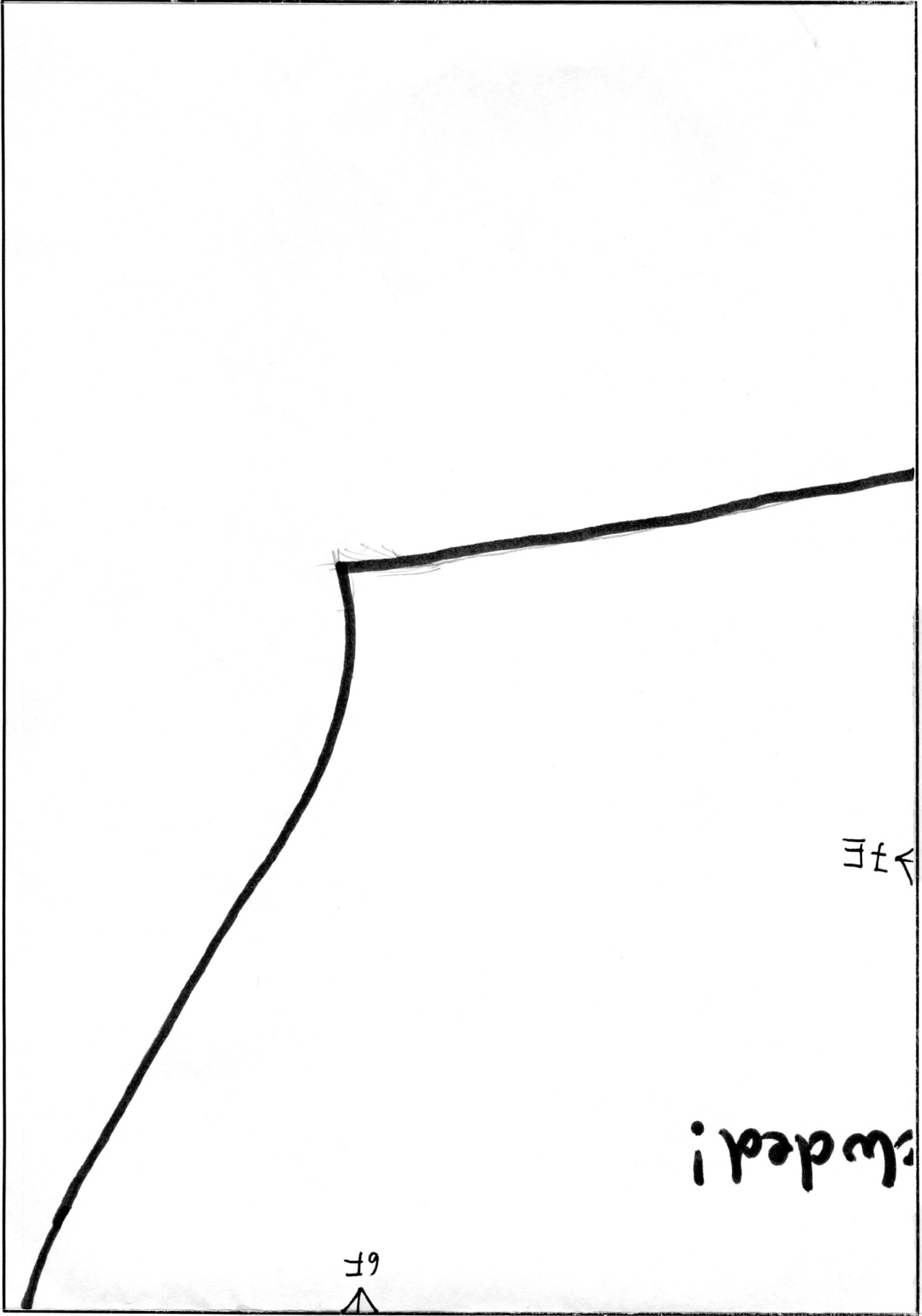


TE →

← TE

∇ 6E

No seam allowance in  
Add about 1.5 cm



9  
↑

E  
→

cluded!