

Holiday Dress Basics

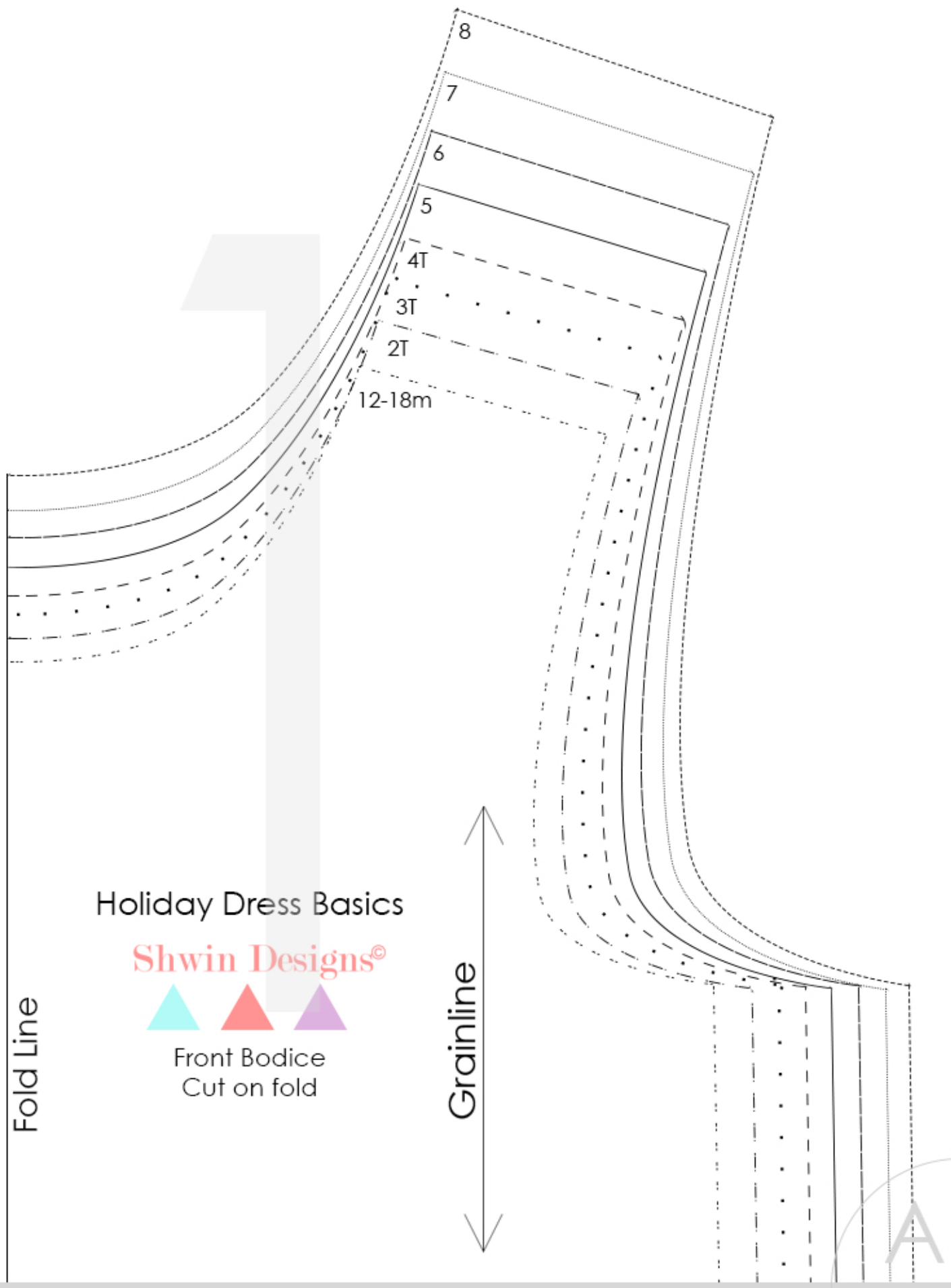
Shwin Designs®



Front Bodice
Cut on fold

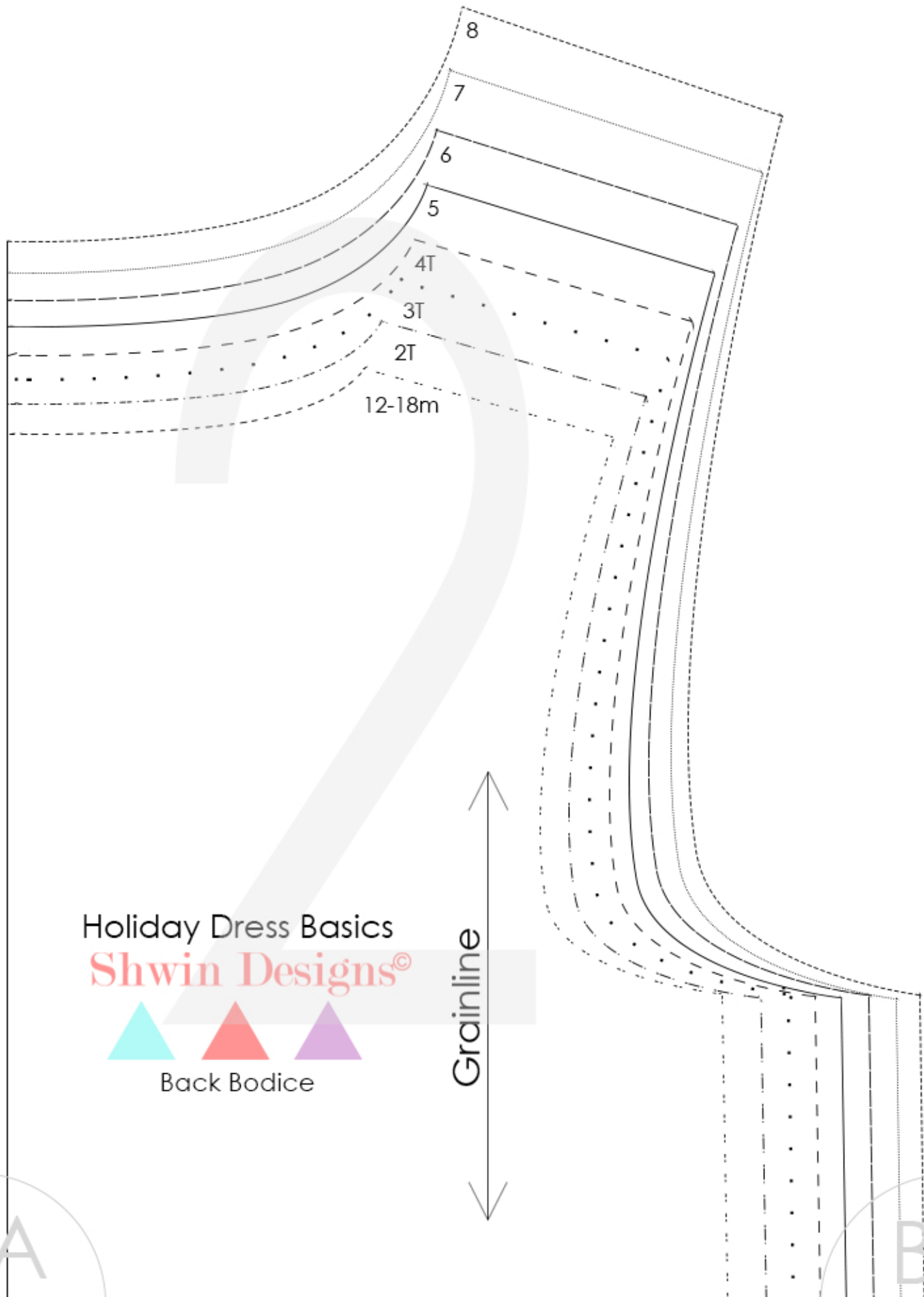
Fold Line

Grainline



12-18m

A



Holiday Dress Basics
Shwin Designs[®]



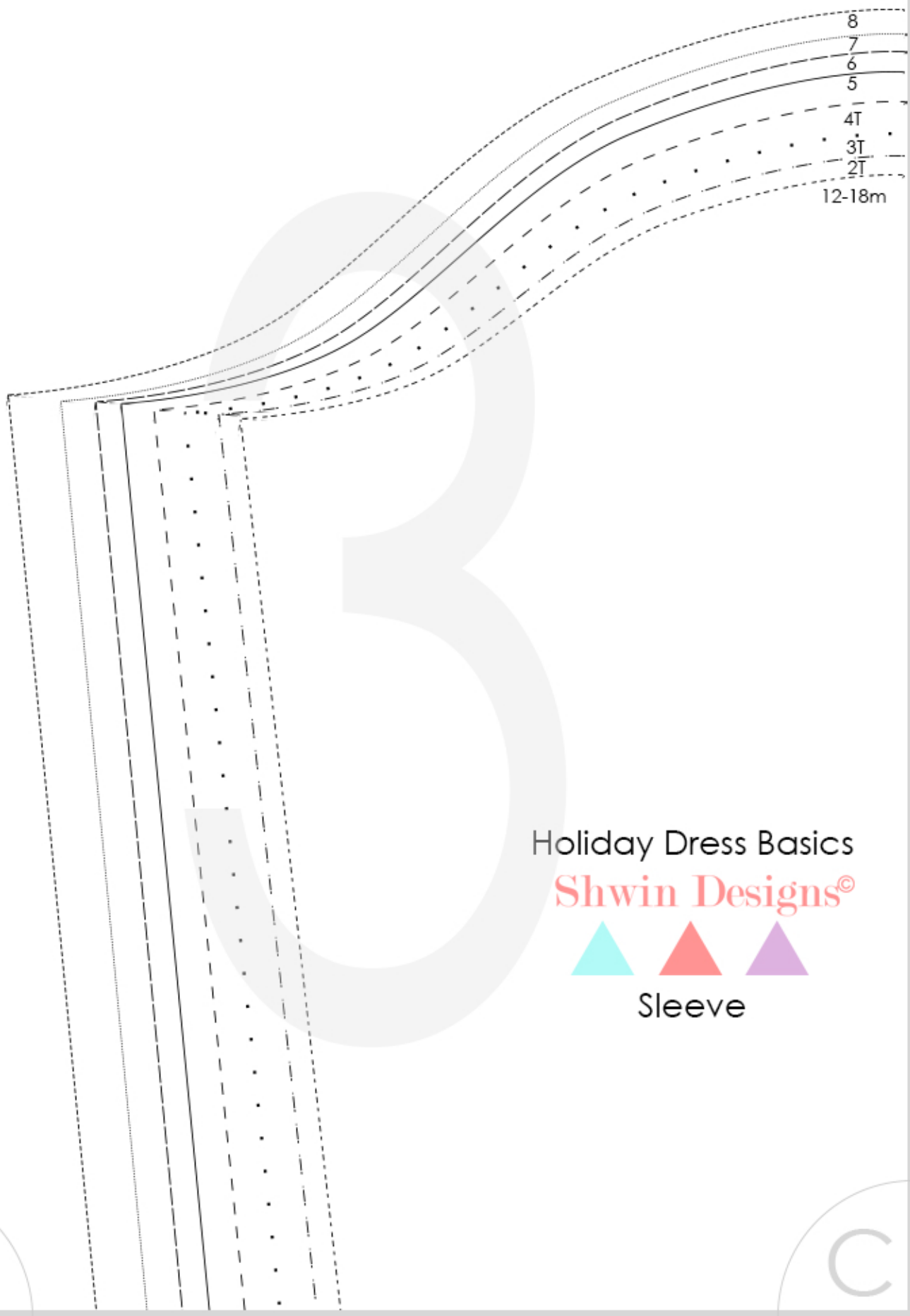
Back Bodice

Grainline

A

B

8
7
6
5
4T
3T
2T
12-18m



Holiday Dress Basics

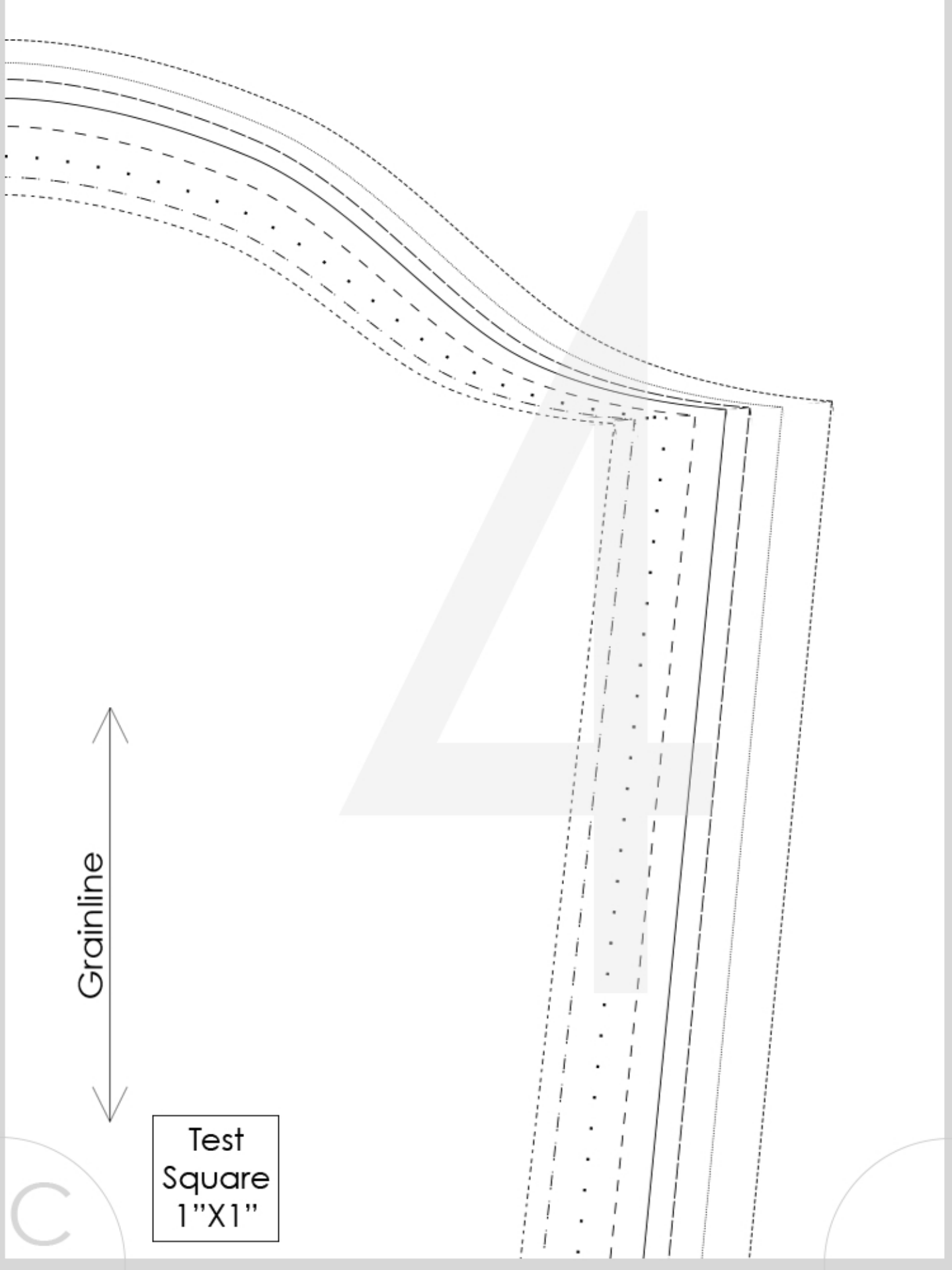
Shwin Designs®



Sleeve

B

C



Grainline

Test
Square
1"X1"

C

12-18m

2T

3T

4T

5

6

7

8

Sizing chart (child's measurements)

For best result choose the size based on chest measurement alter between sizes if needed

Size	Chest	Waist	Hip	Height
12-18m	20"	19"	21"	33-35"
2T	21"	20"	22"	35-37"
3T	22"	20.5"	23"	38-40"
4T	23"	21"	24"	40-42"
5	24"	21.5"	25"	42-44"
6	25"	22"	26"	45-47"
7	26"	22.5"	27"	47-49"
8	27"	23"	28"	49-51"

A

B

12-18m

2T

3T

4T

5

6

7

8

The Holiday Basics, Bodice and Sleeve set is Copyright protected, all rights remain with Shwin Designs and shwinandshwin.com.

Pattern may not be copied, shared or redistributed in any way.

Pattern may not be altered to make a pattern for sale.

No part of the pattern or instructions may be re-used.

All pattern pieces and instructions are legally protected under the copyright.

Instructions on how to use these pattern pieces can be found on:
shwinandshwin.com

B

C

