

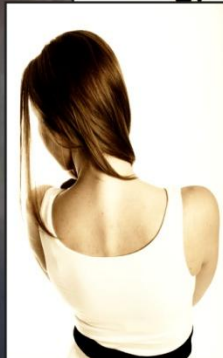
The Angelina

The perfect shift dress for every occasion

PDF
Pattern



Design your
Own with
Frocks & Frolics
'You Tube'
Tutorials



The Angelina Beach Dress

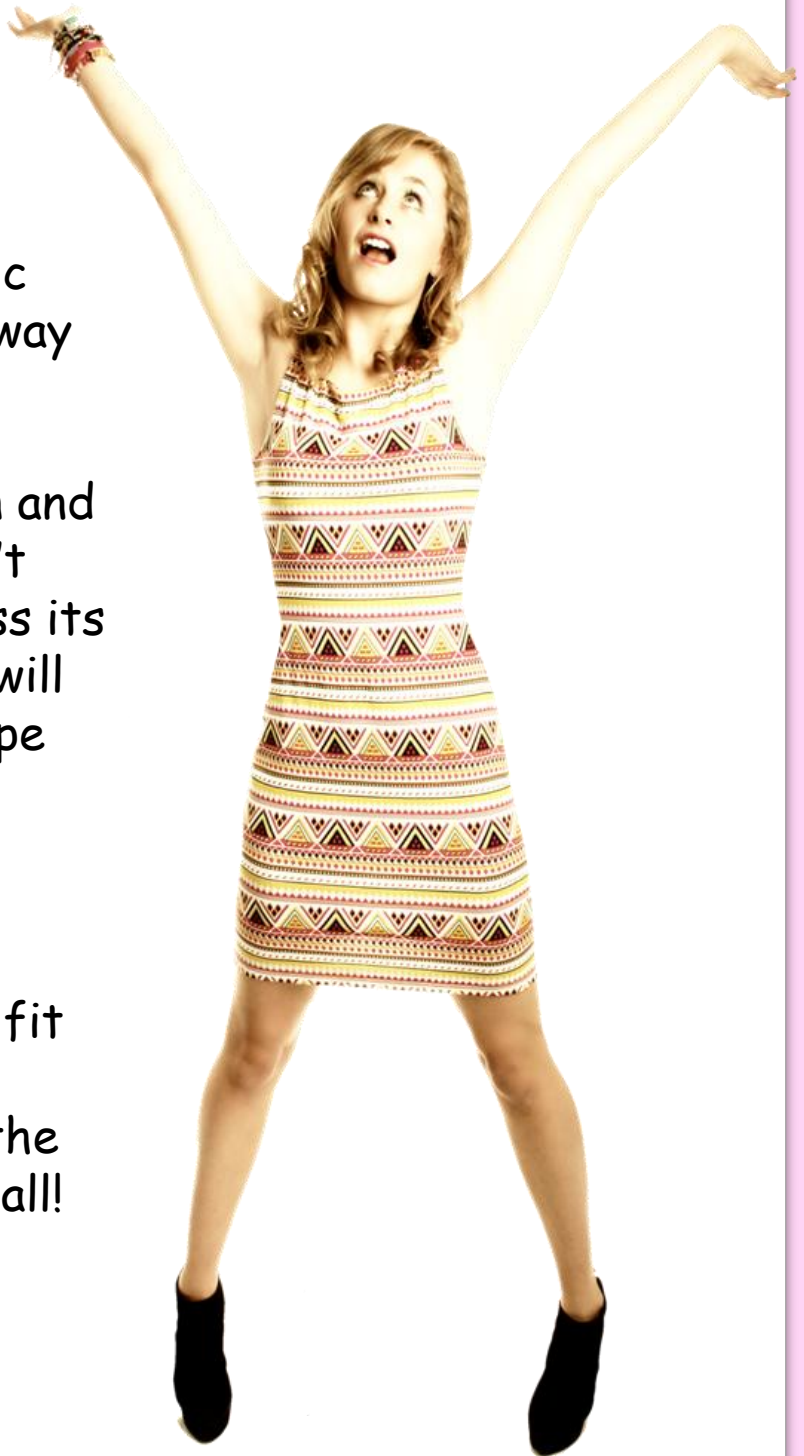
What you need:

1 meter/yard of fabric
(jersey in one or two way
stretch)

I usually work with a
medium weight cotton and
lycra mix fabric. Don't
use 100% cotton unless its
fabulous quality as it will
stretch and loose shape
like a tired t-shirt.

PDF Pattern:

Make sure press the
option don't shrink to fit
A4 size! This is very
important otherwise the
pattern will be too small!



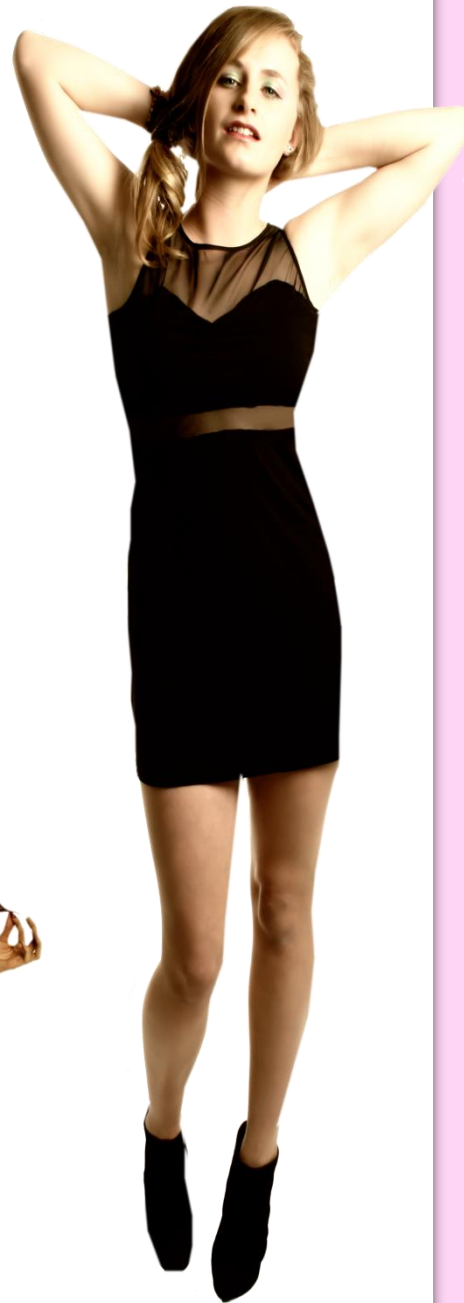
Preparation:

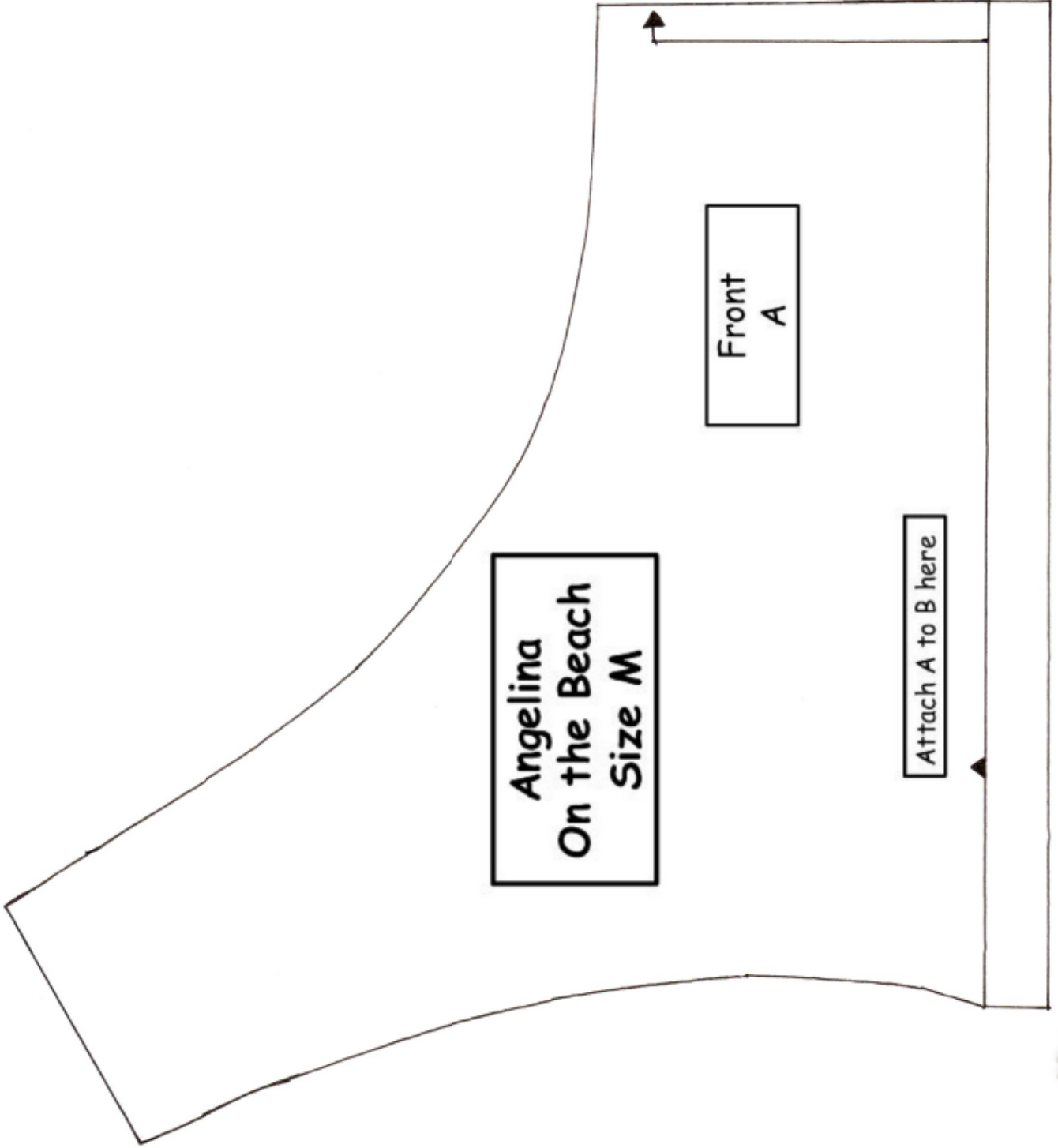
Join the pattern pieces. Use the little flowers as a guide if you are not sure. What has the same flowers goes together.

Cut out one front, one back and a facing for each.

This pattern is the basis for a lot of styles. In my You Tube tutorials you can see how to quickly alter the pattern for a new look. Sometimes just changing the fabric makes a huge difference.

The 'You tube Tutorial' will take you through the making process. Enjoy!



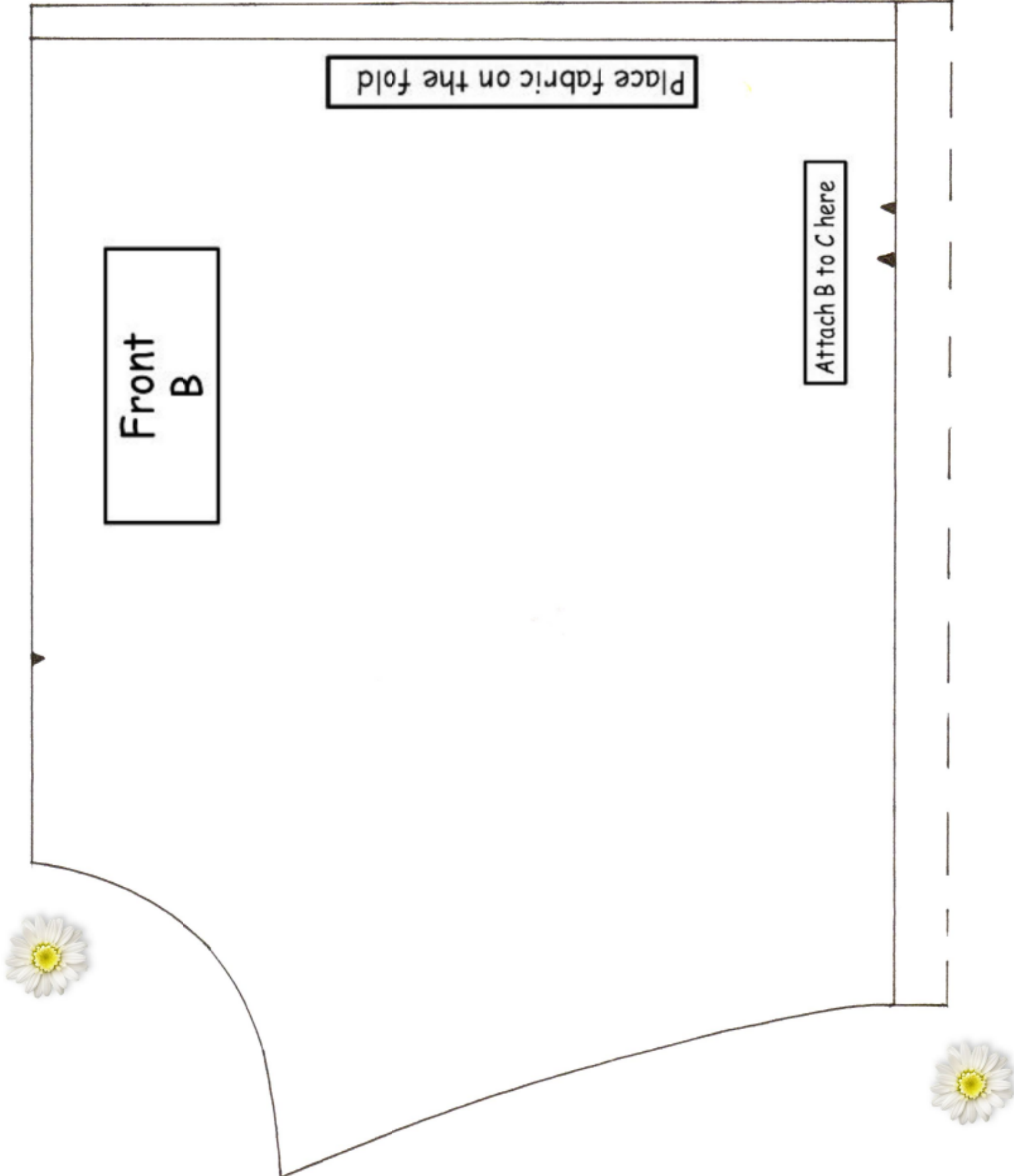


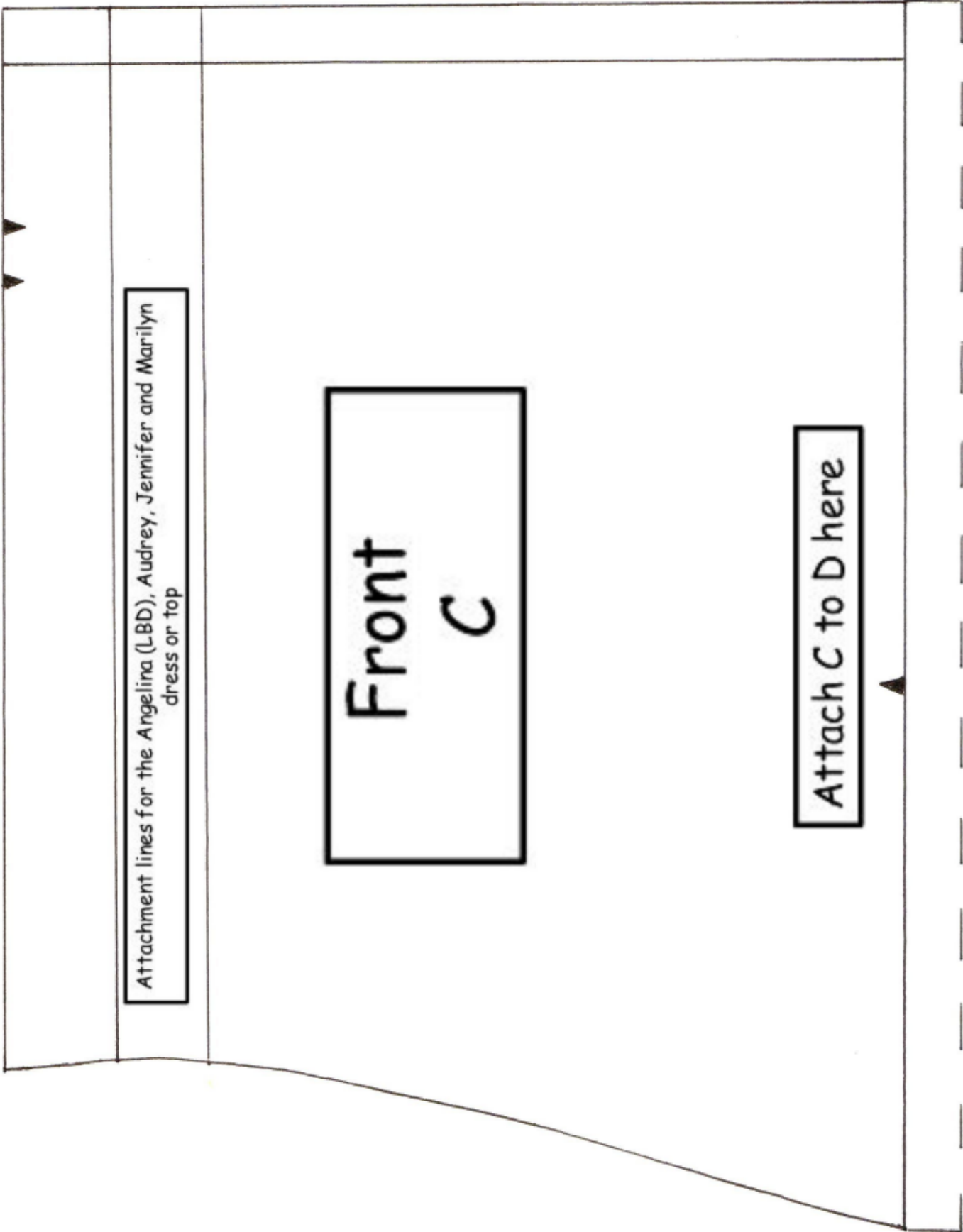
**Angelina
On the Beach
Size M**

**Front
A**

Attach A to B here







Attachment lines for the Angelina (LBD), Audrey, Jennifer and Marilyn dress or top

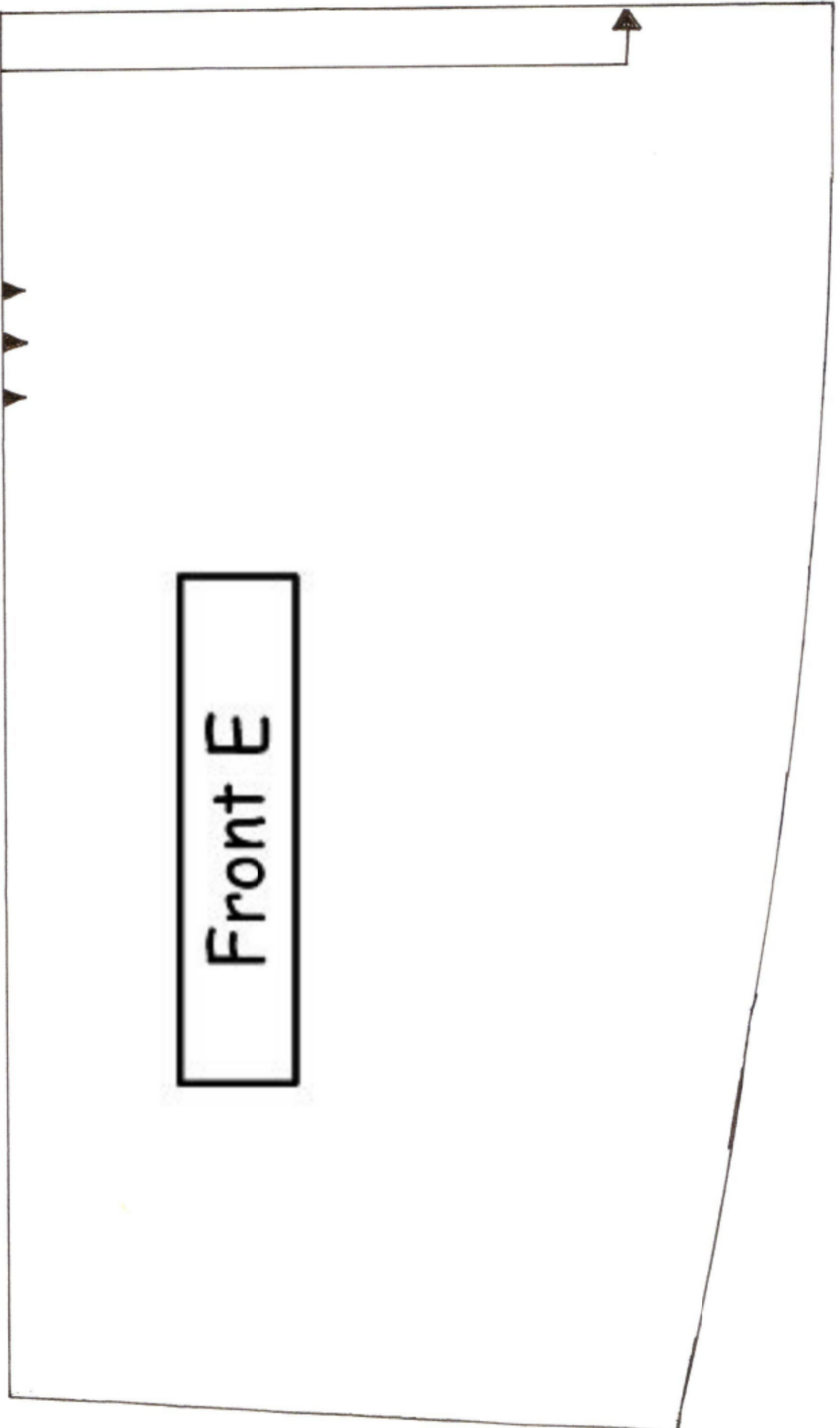
Front
C

Attach C to D here

Front
D

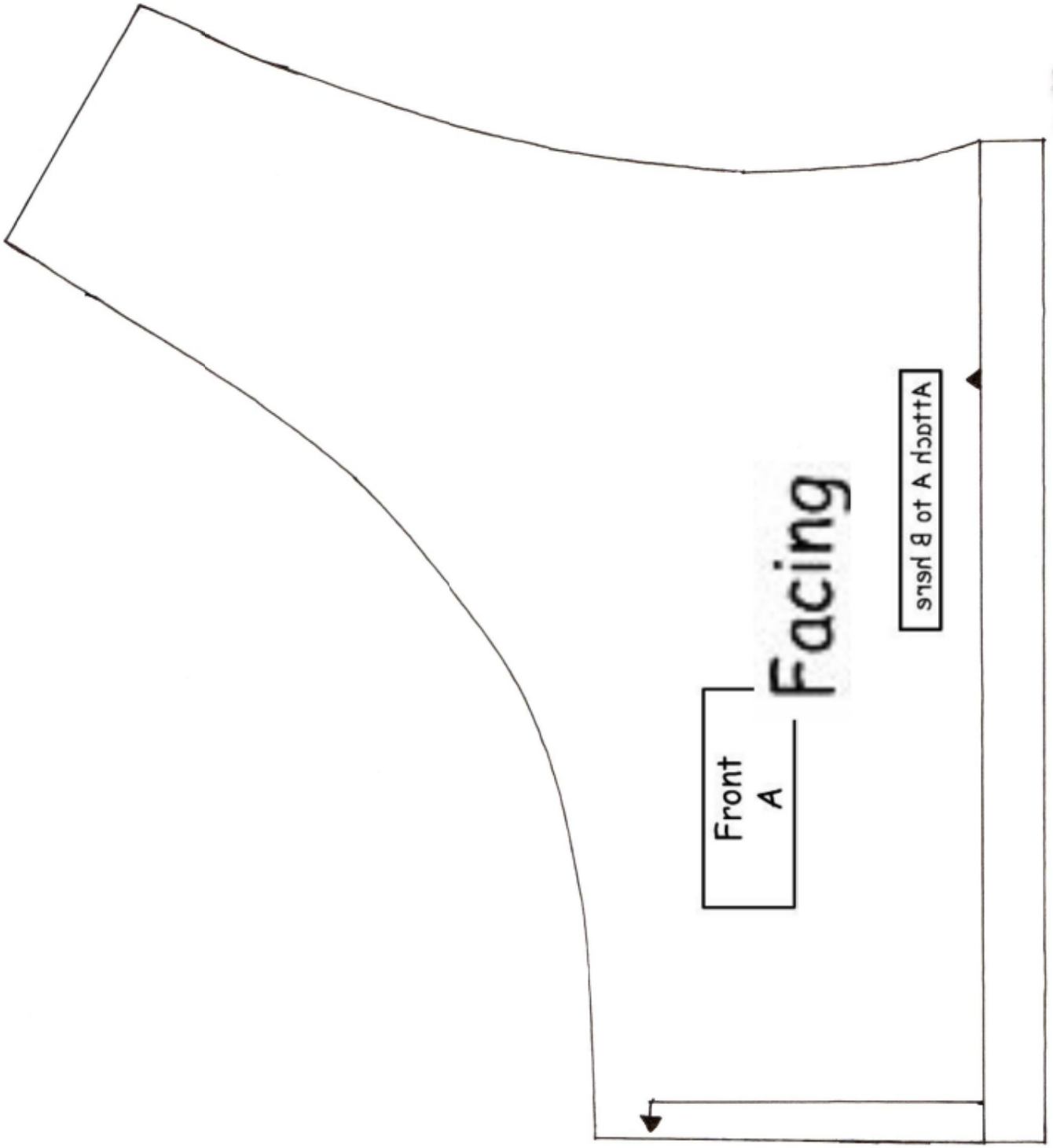
Attach D to E here





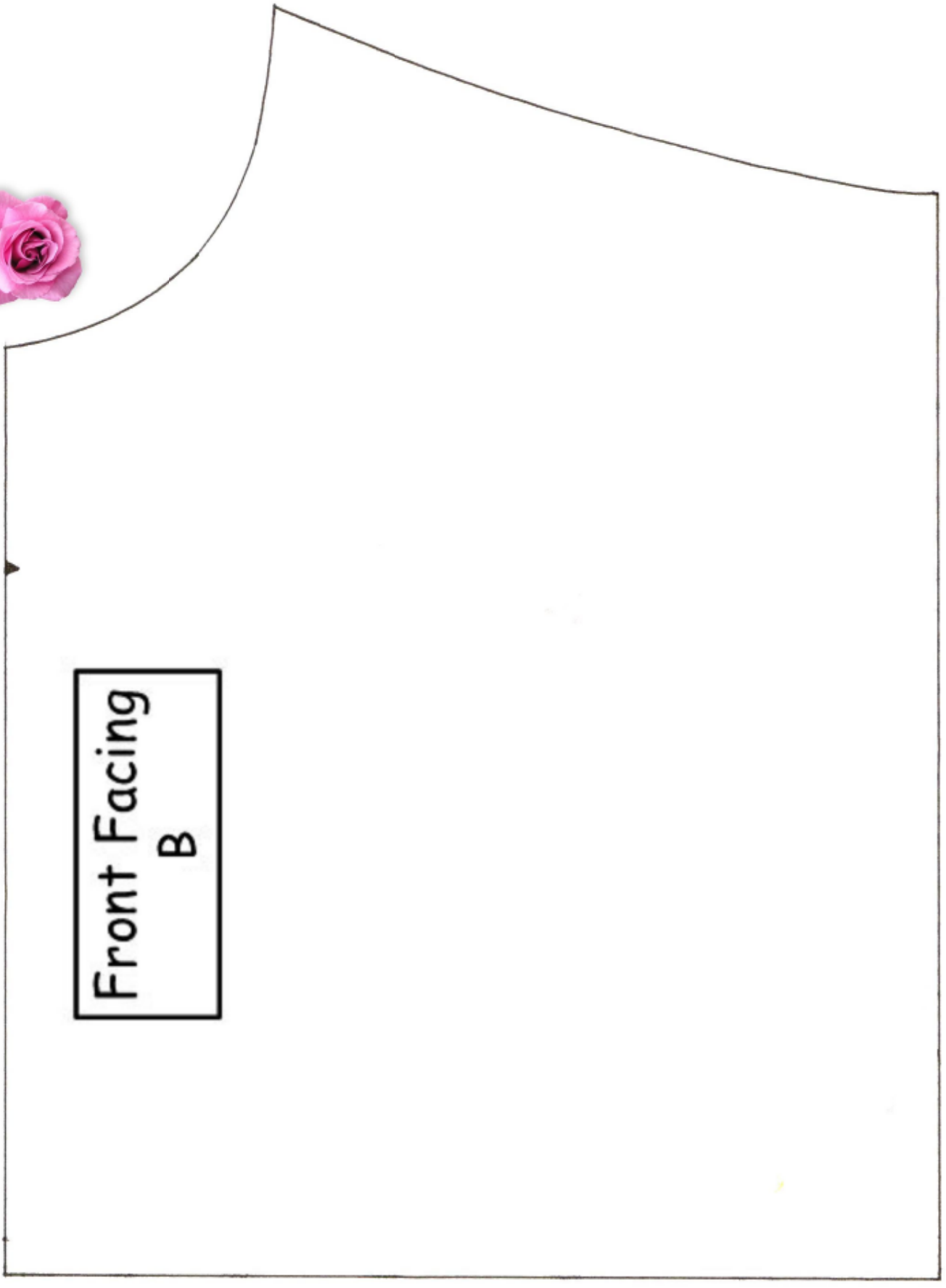
Front E

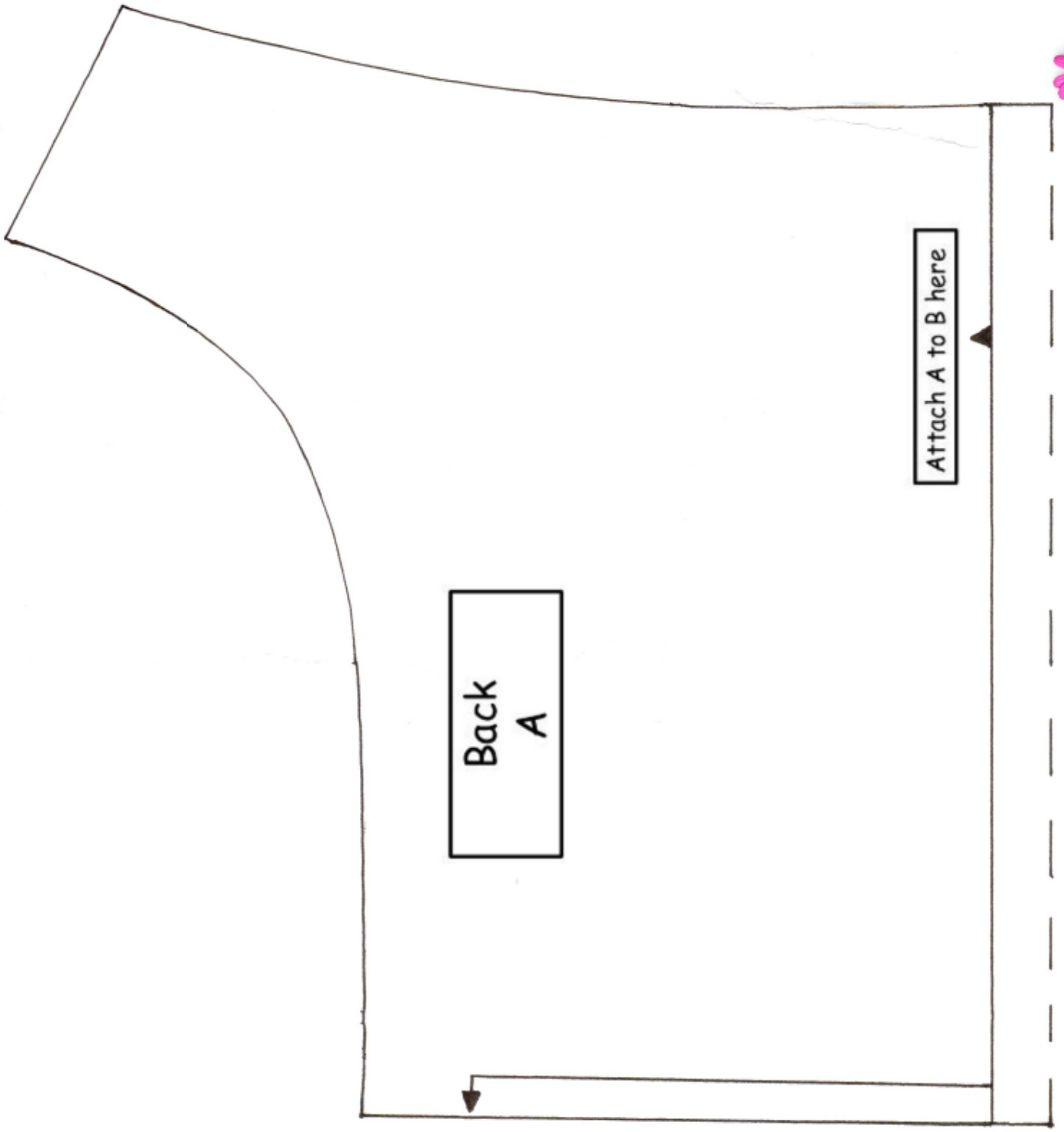




Front Facing

B

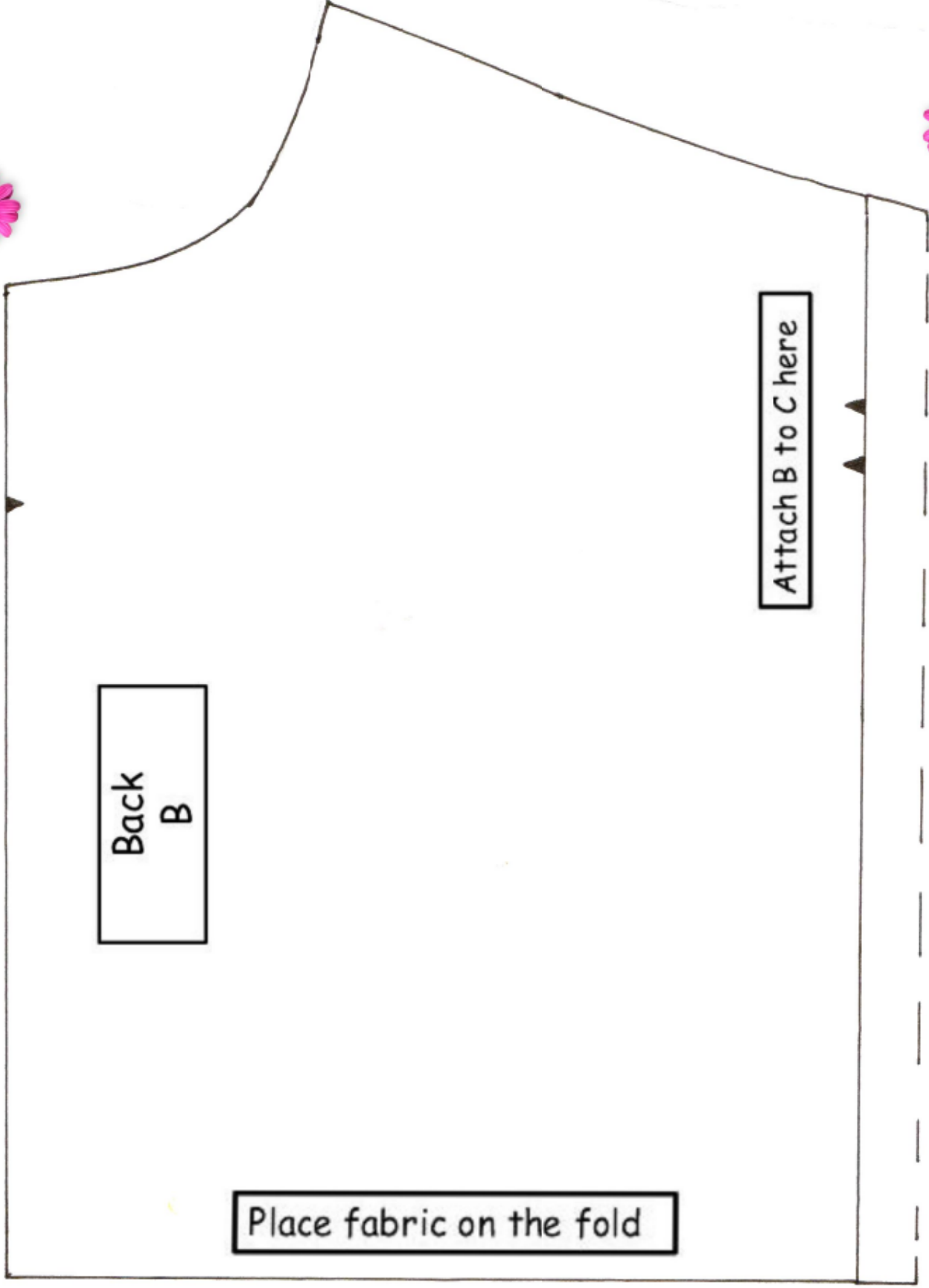




Back
A

Attach A to B here

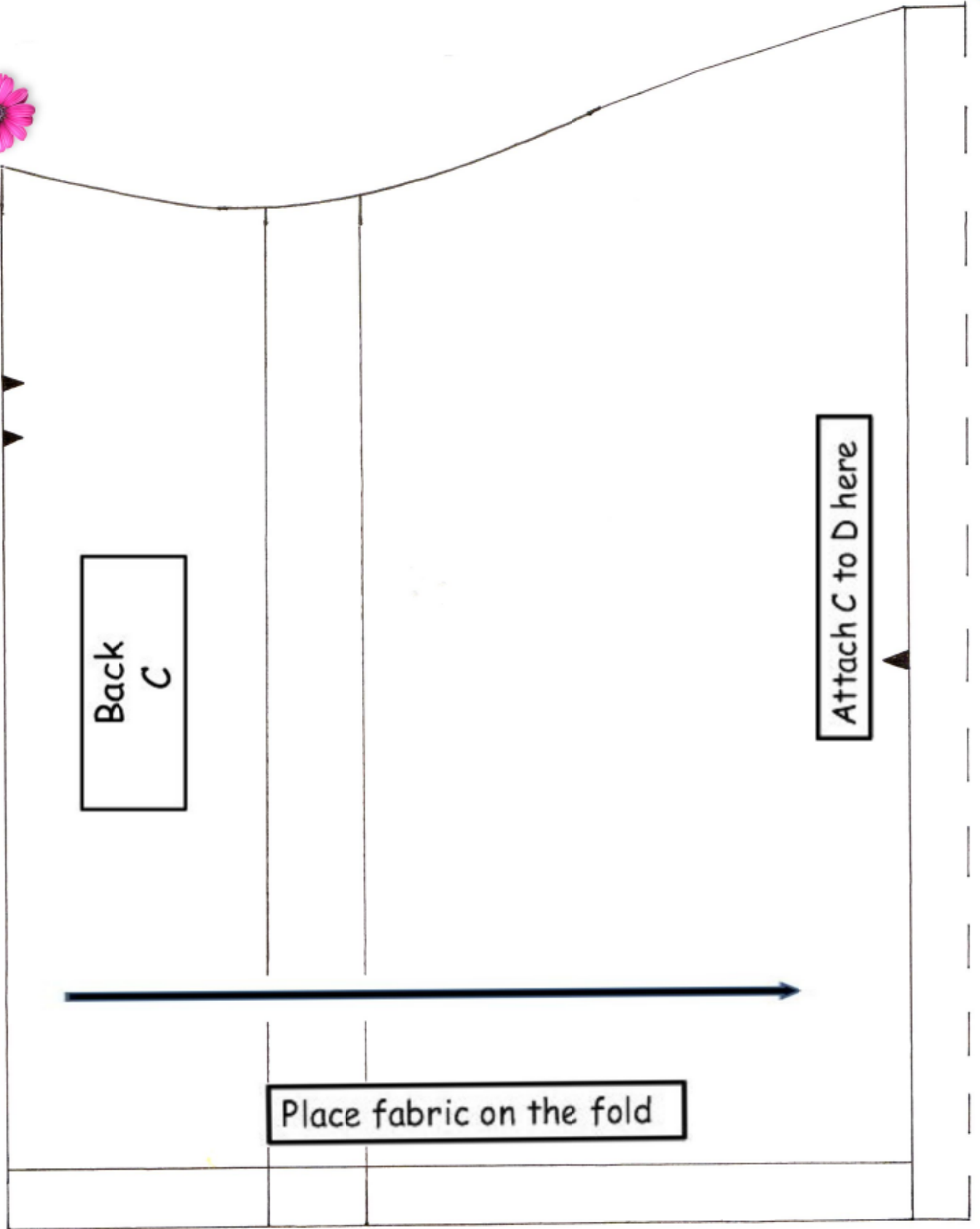




Back
B

Attach B to C here

Place fabric on the fold

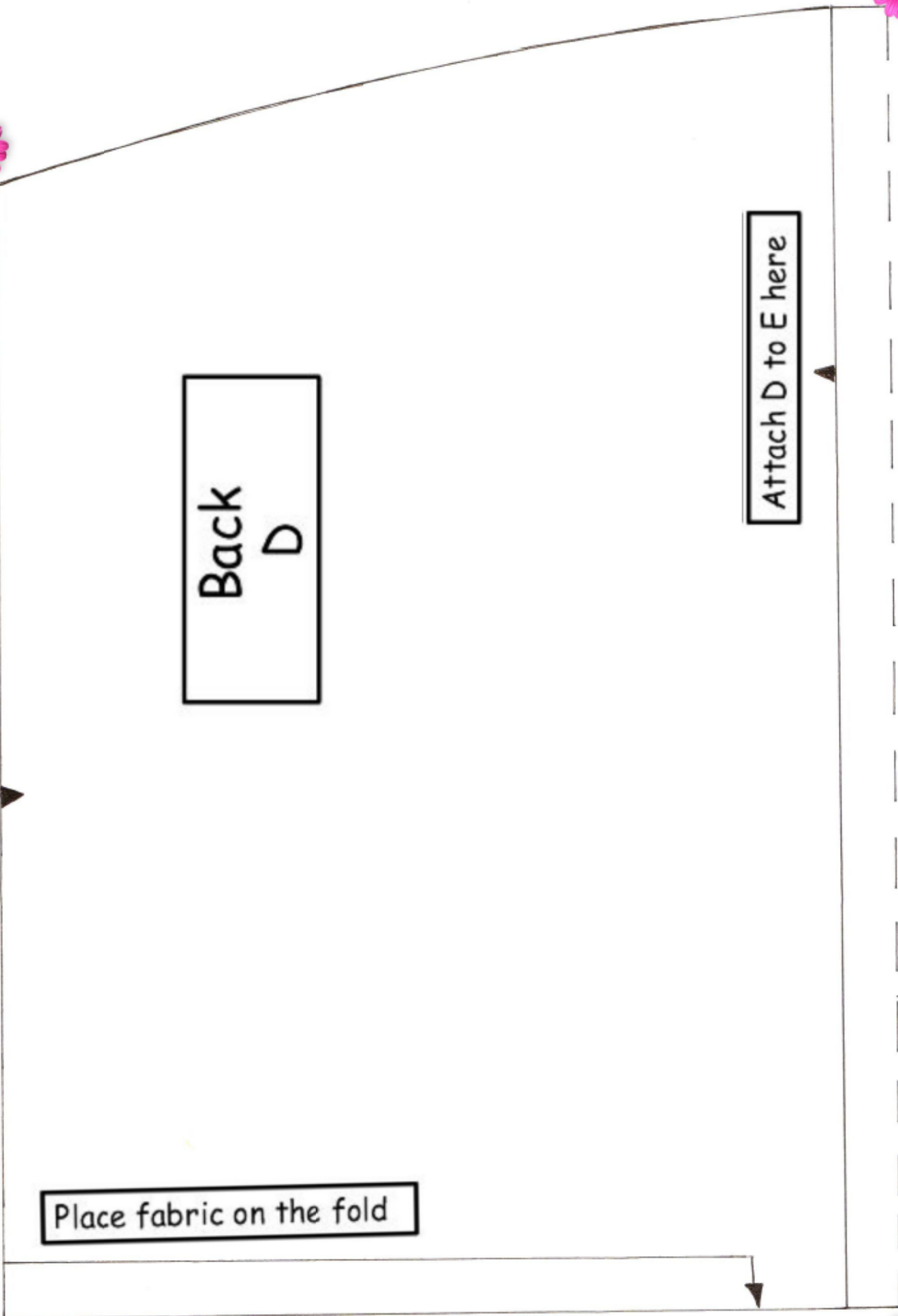


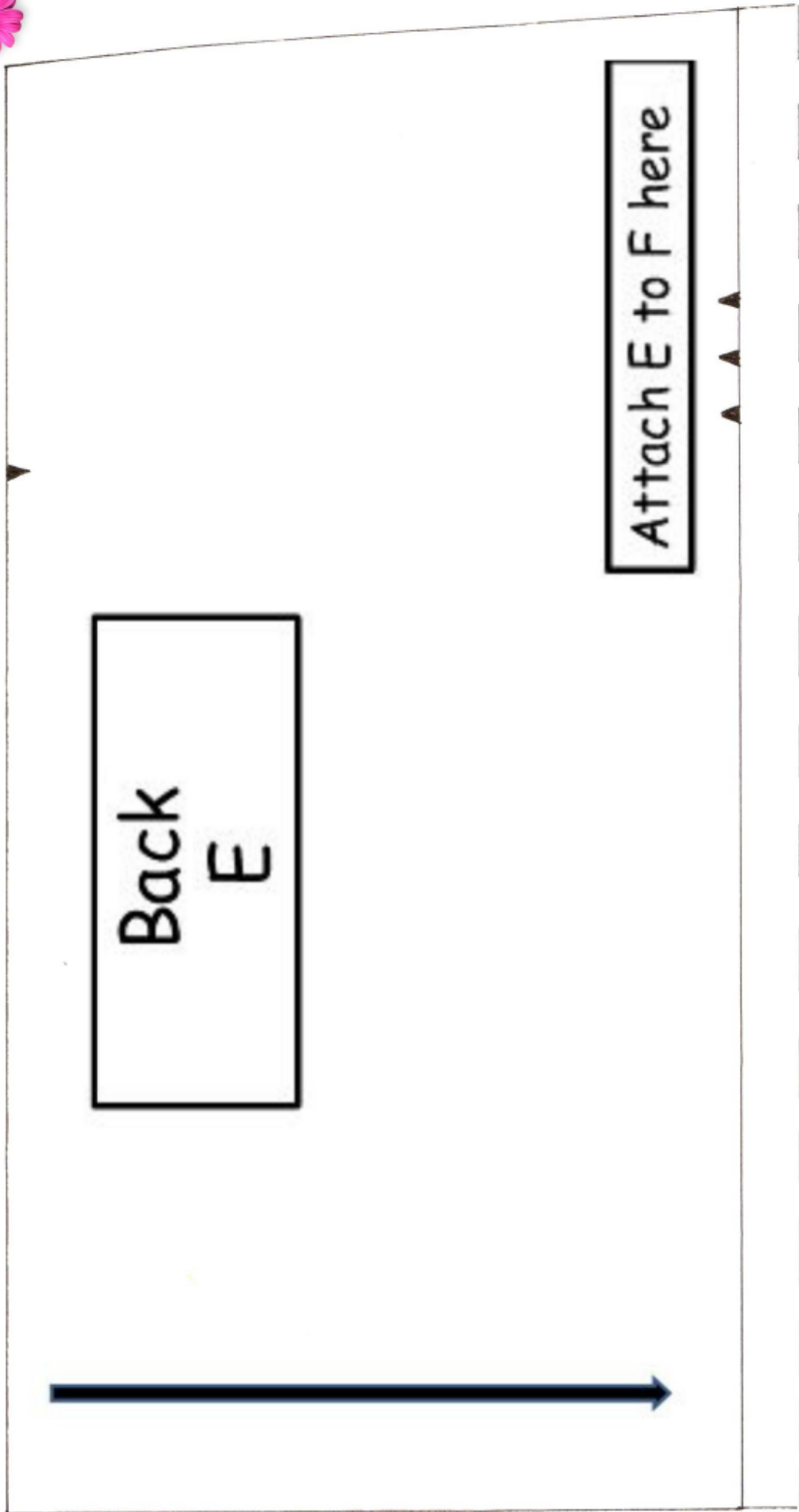


Back
D

Attach D to E here

Place fabric on the fold

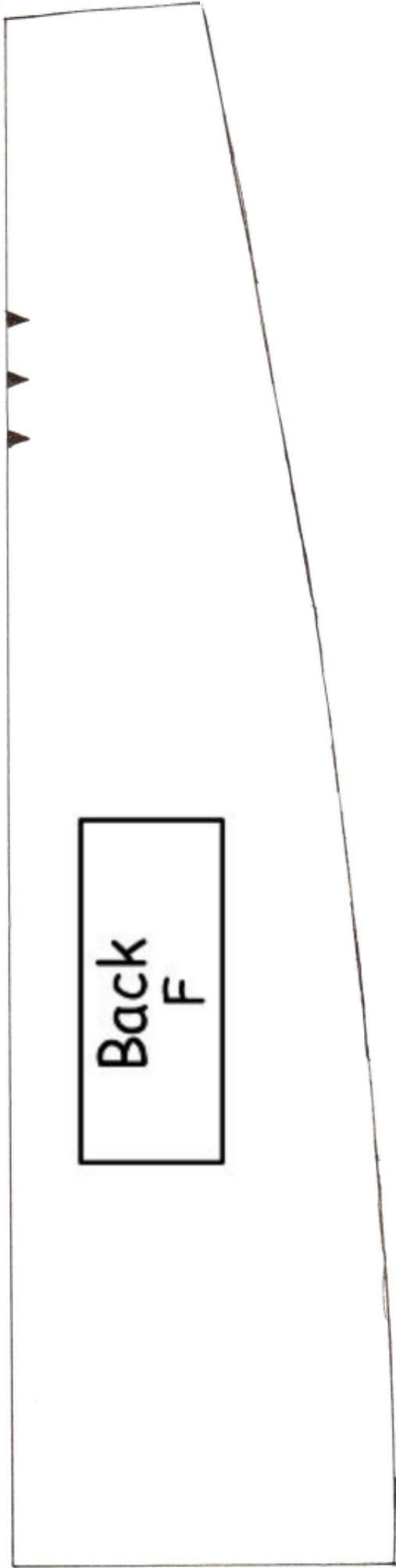




Back
E

Attach E to F here





Back
F



Scale of 5 cm. Make sure your
printed pattern is true to size!

Attach all pieces then cut:
Front 1X
Back 1X
Facing Front 1X
Facing Back 1X



Back Facing
A

Attach A to B here



Place fabric on the fold

Back Facing
B

