

the littlest studio

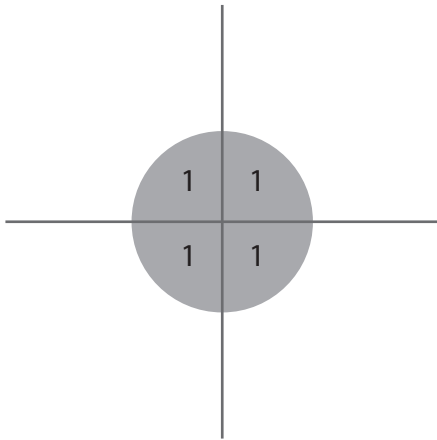


Elf Stocking Style # Ho Ho 2

Printing

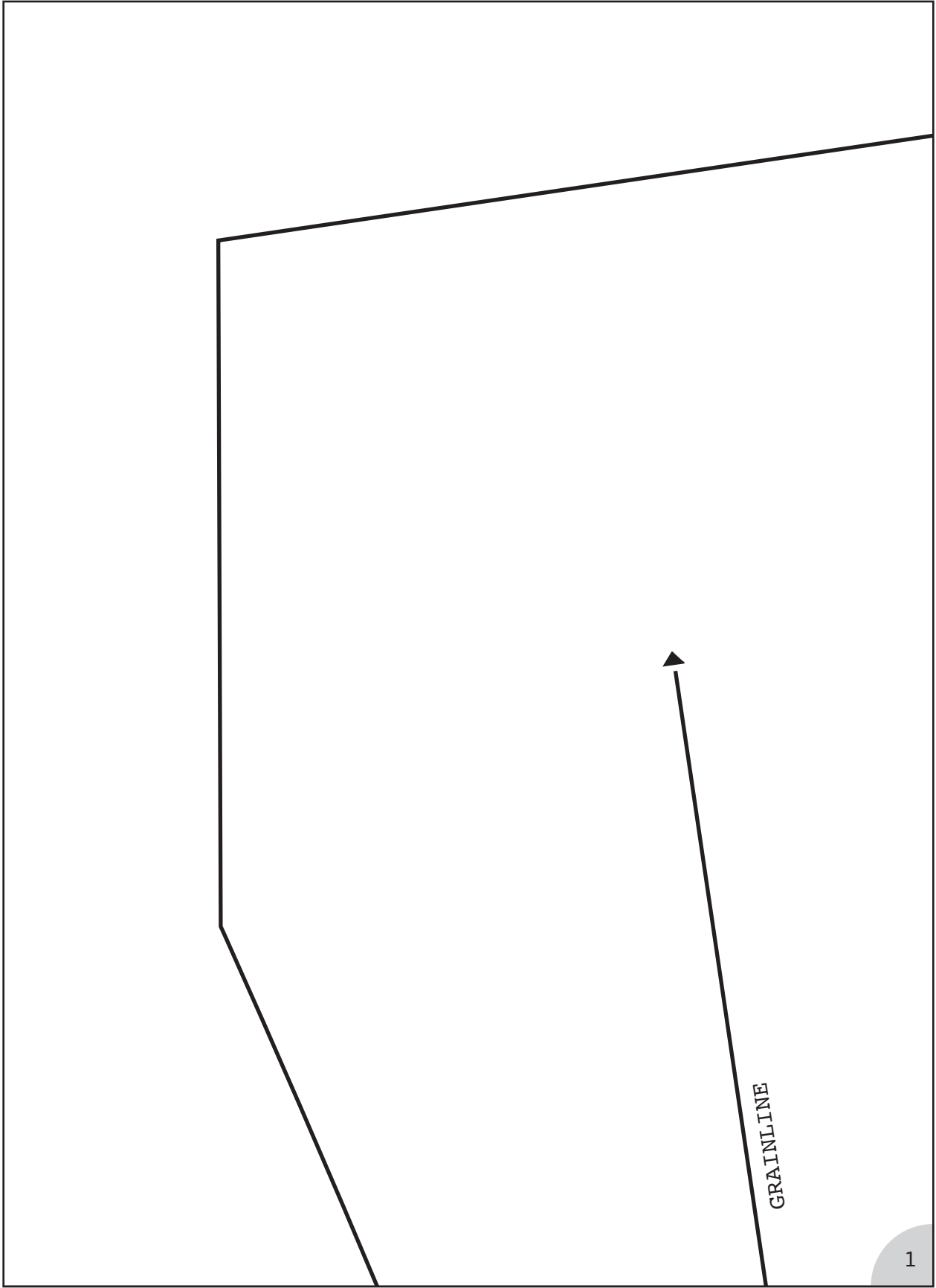


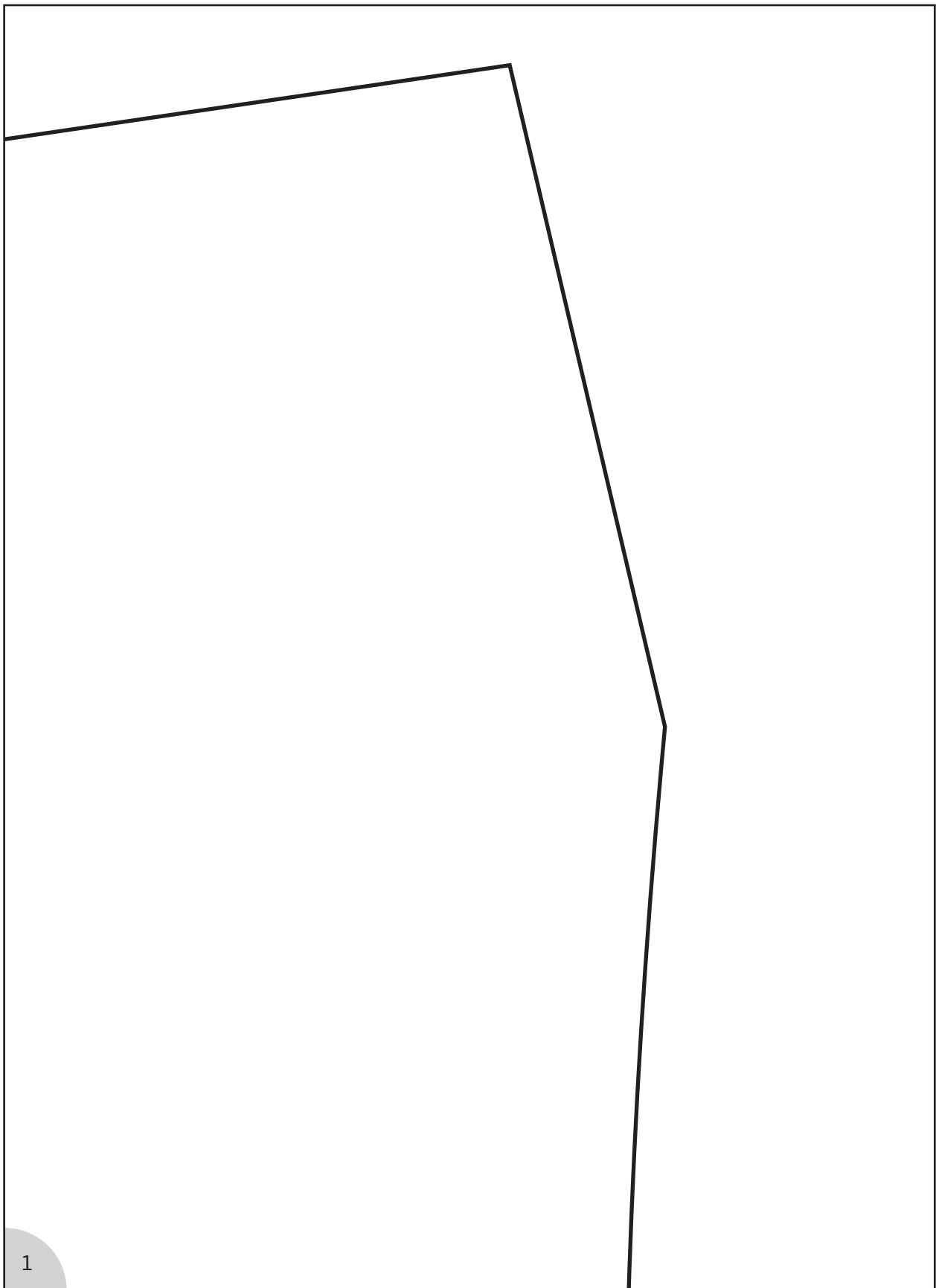
When printing your pattern, make sure that your printer is set to print the “actual size” rather than have it “fit to page”. This will ensure correct sizing. Print off the first page of the pattern and measure the 2”x2” square to double check your printing.



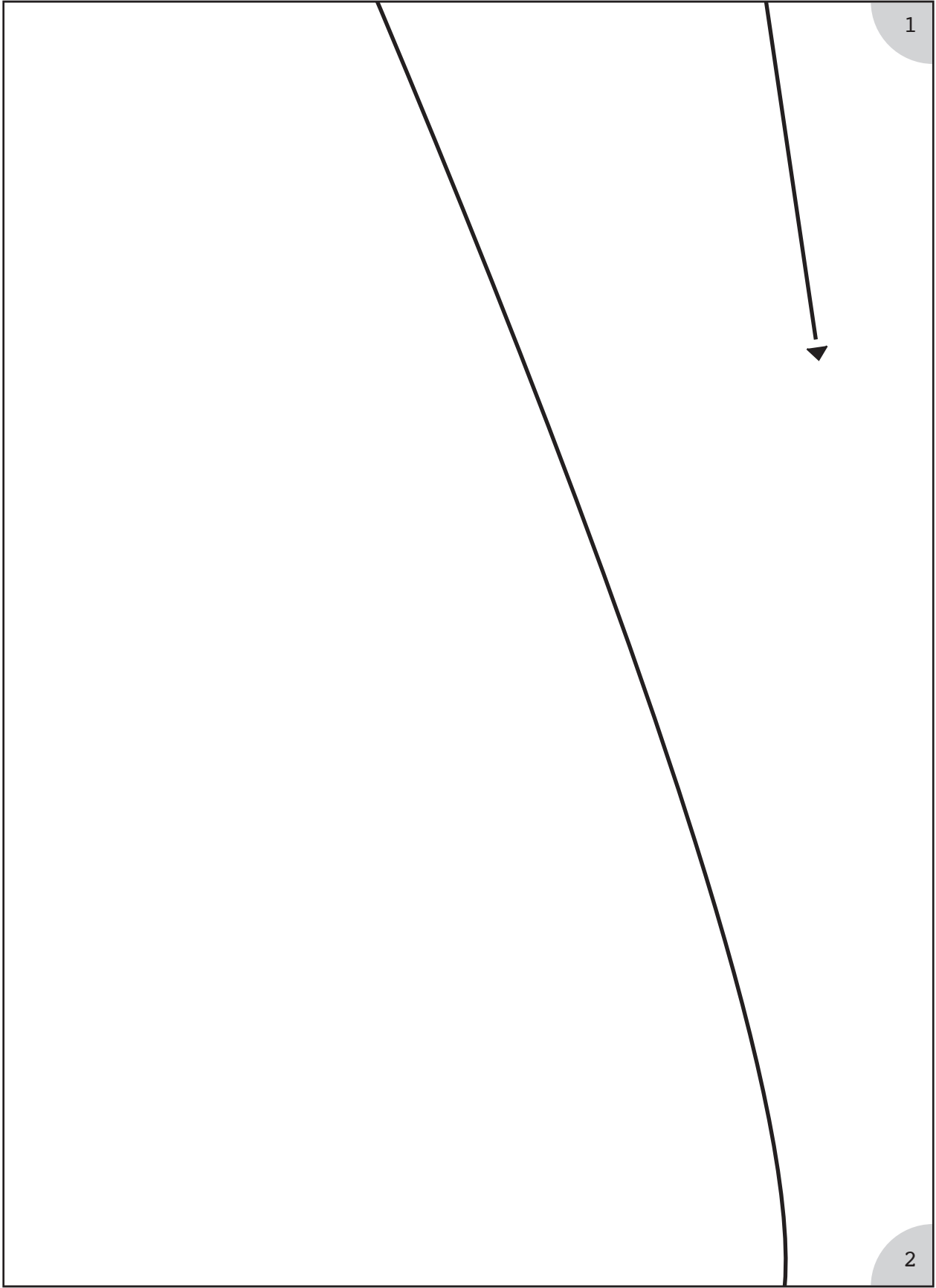
Assembly

After printing all your pattern pieces, match up the numbered circles to assemble your pattern. You will have to trim the paper to the border on some sides to properly tape your pieces into place.





1



1

2

The Littlest Studio

Elf Stocking
Style # HOHO2
Front and Lining
CUT 2 Main
CUT 2 Lining

The Littlest Studio © 2015
www.thelittleststudio.com

The contents of this pattern
(including instructions, photos and illustrations)
are protected by copyright
and belong exclusively to The Littlest Studio.
This pattern is for domestic use only.
No part of this pattern
may be reproduced or resold.

