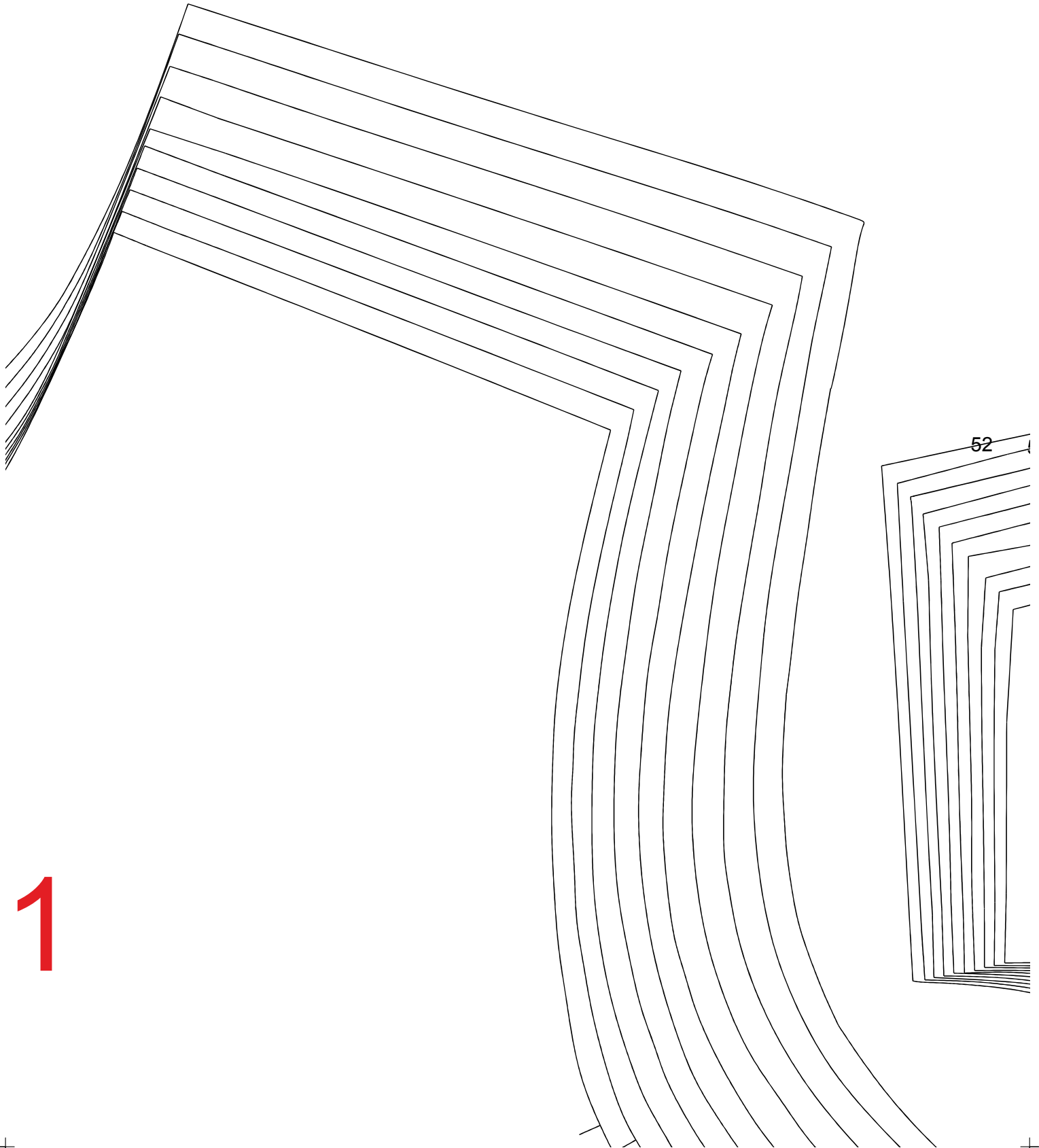
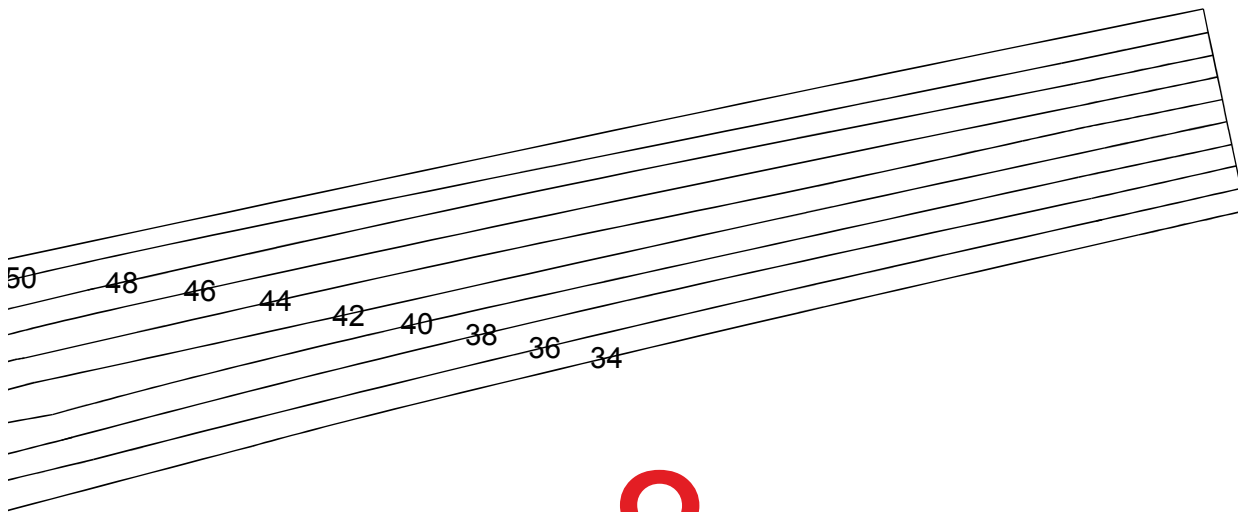
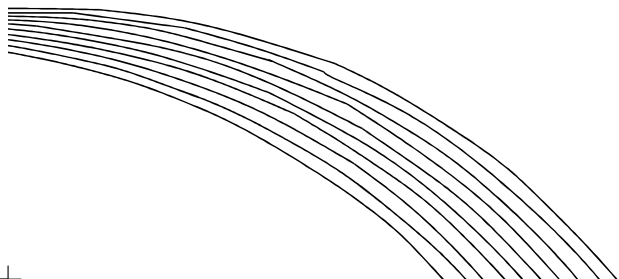
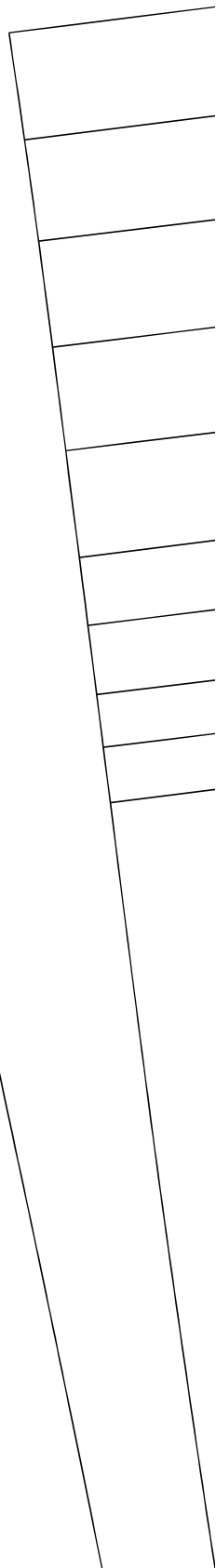


3





8



52

50

48

46

44

42

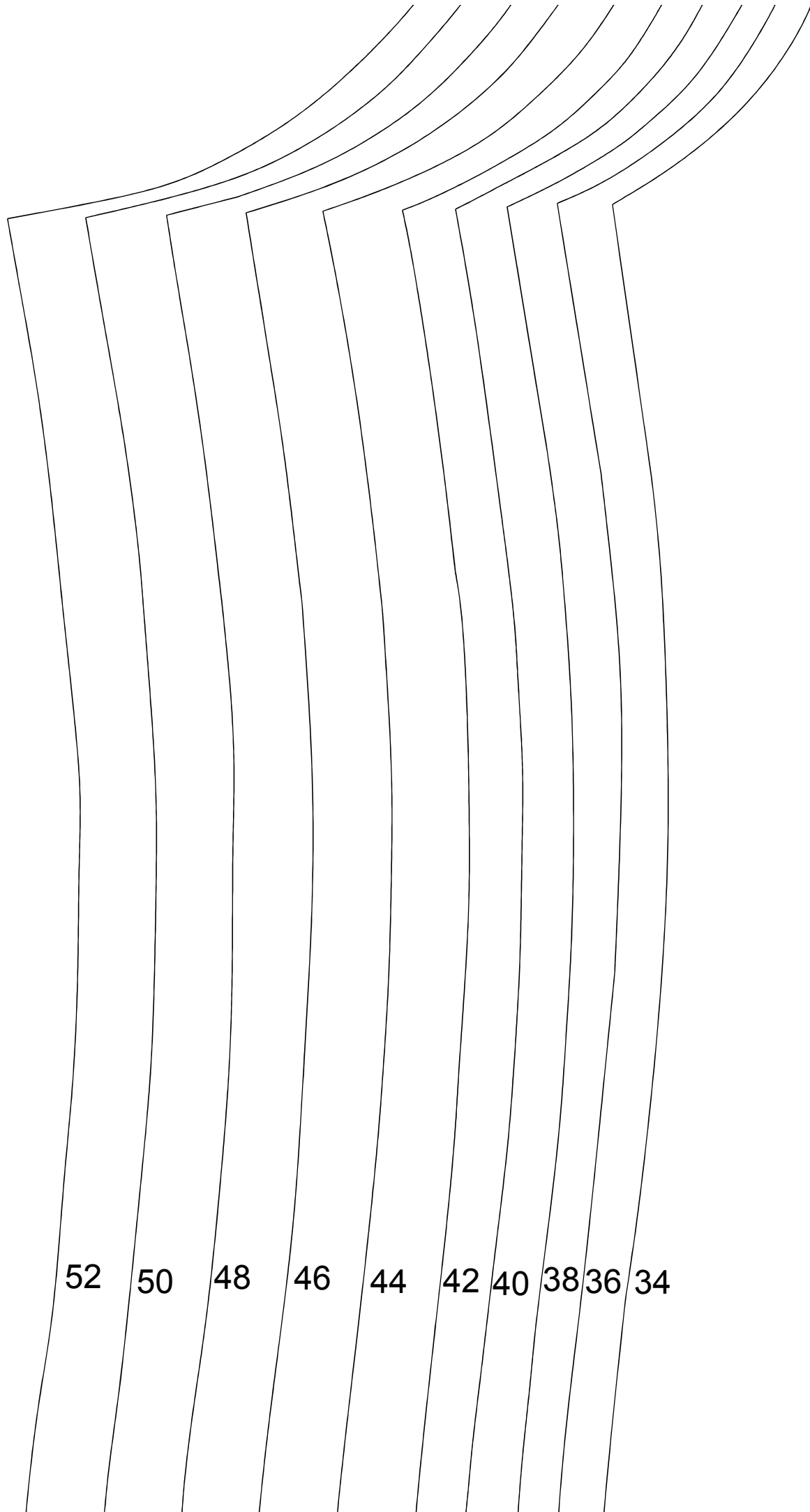
40

38

36

34

2



52

50

48

46

44

42

40

38

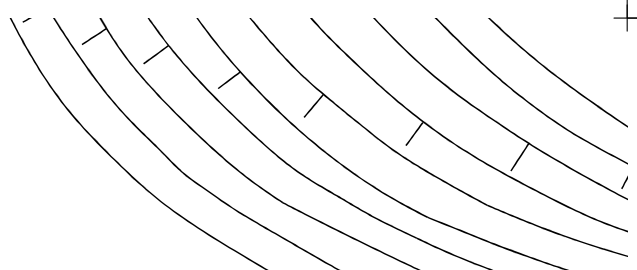
36

34

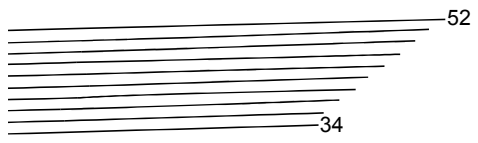




(3, 2)

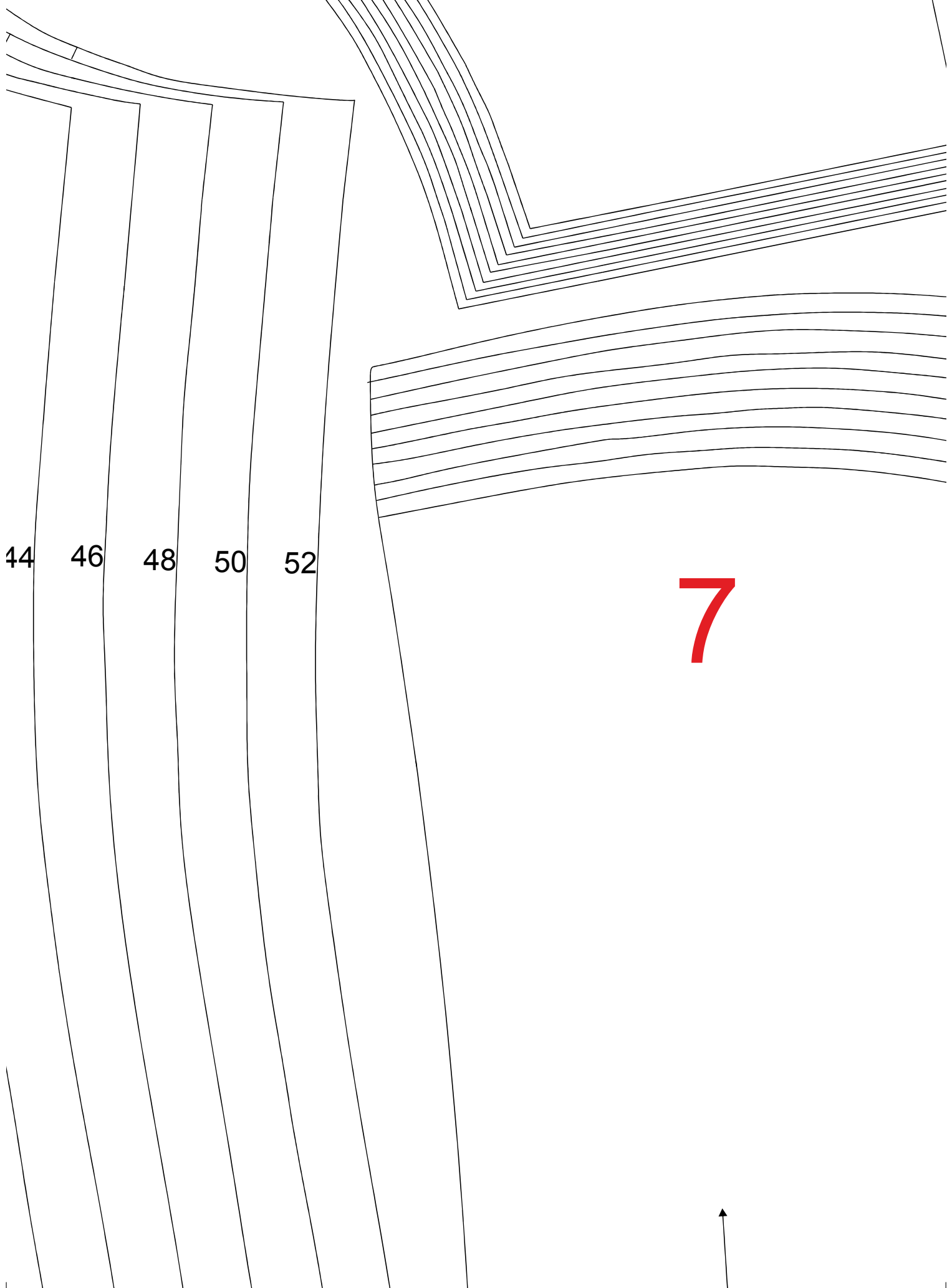


34 36 38 40 42





(4, 2)



44

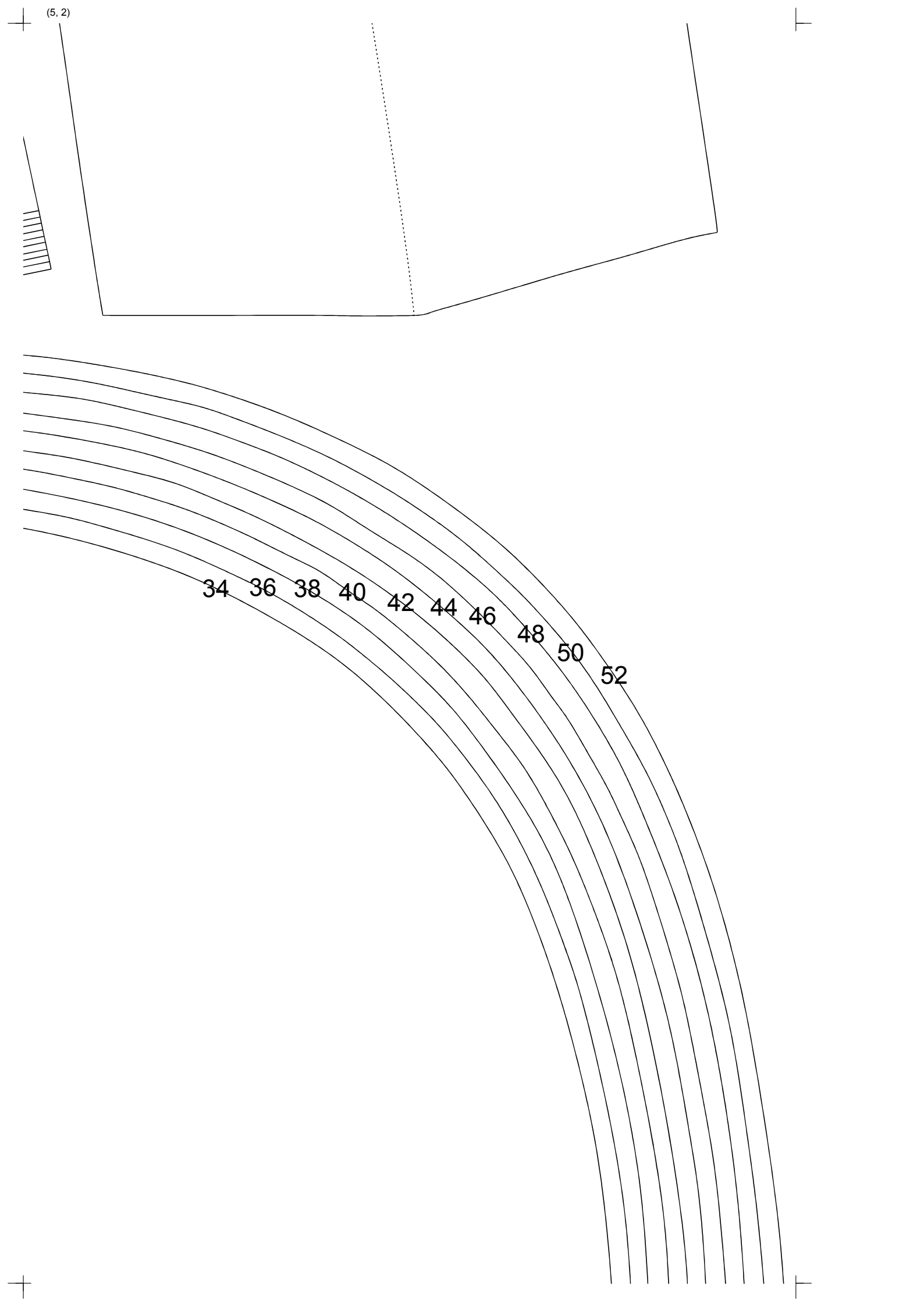
46

48

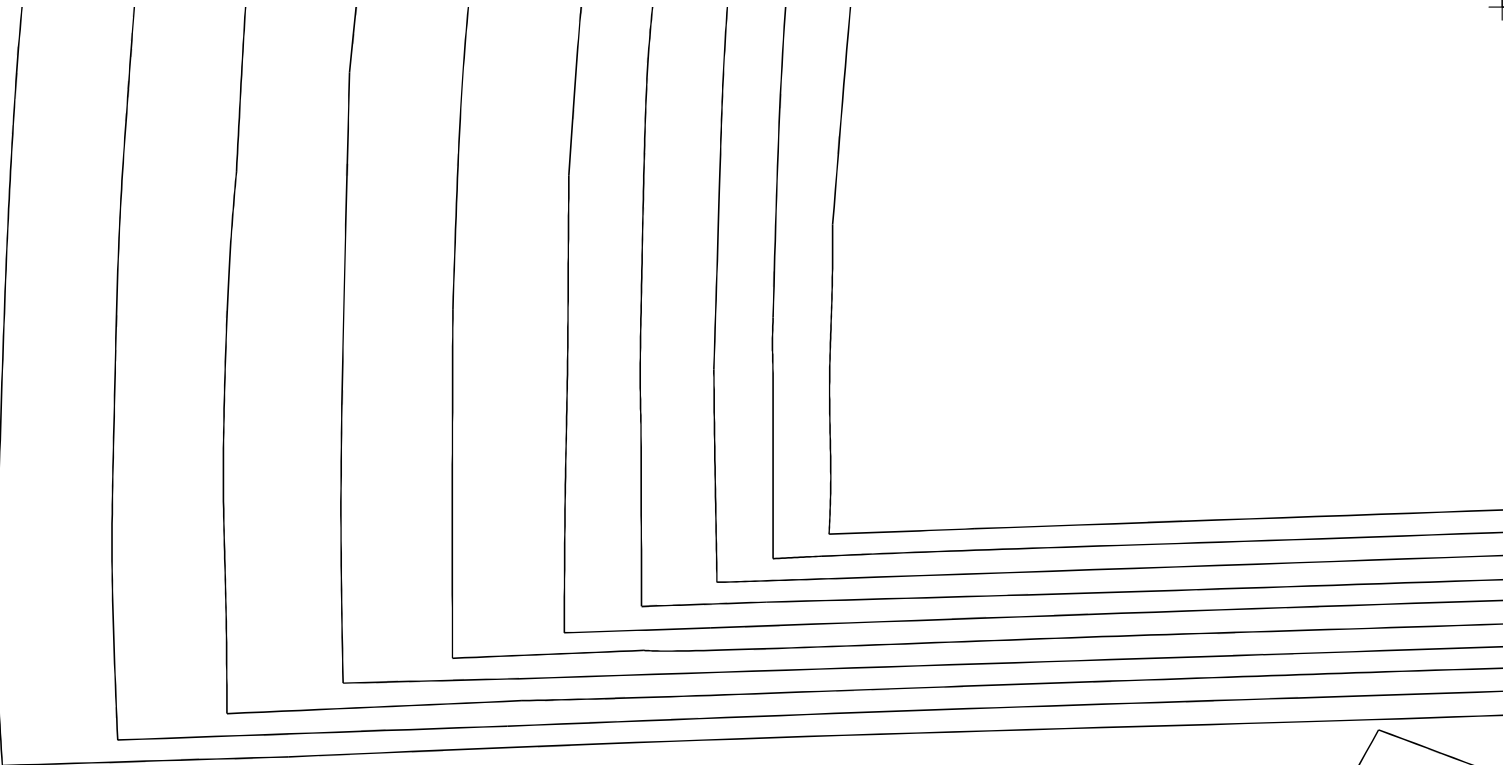
50

52

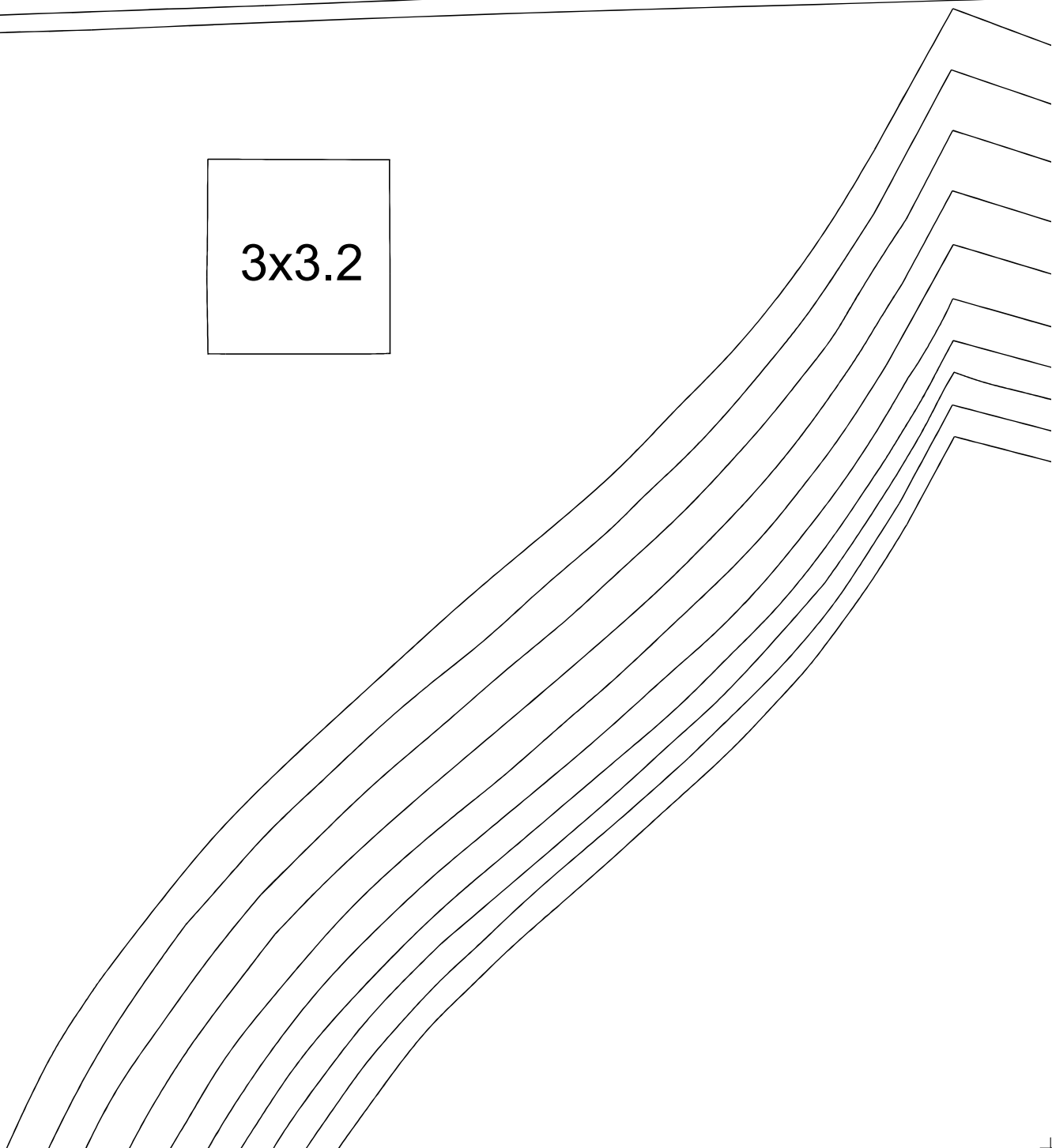
7



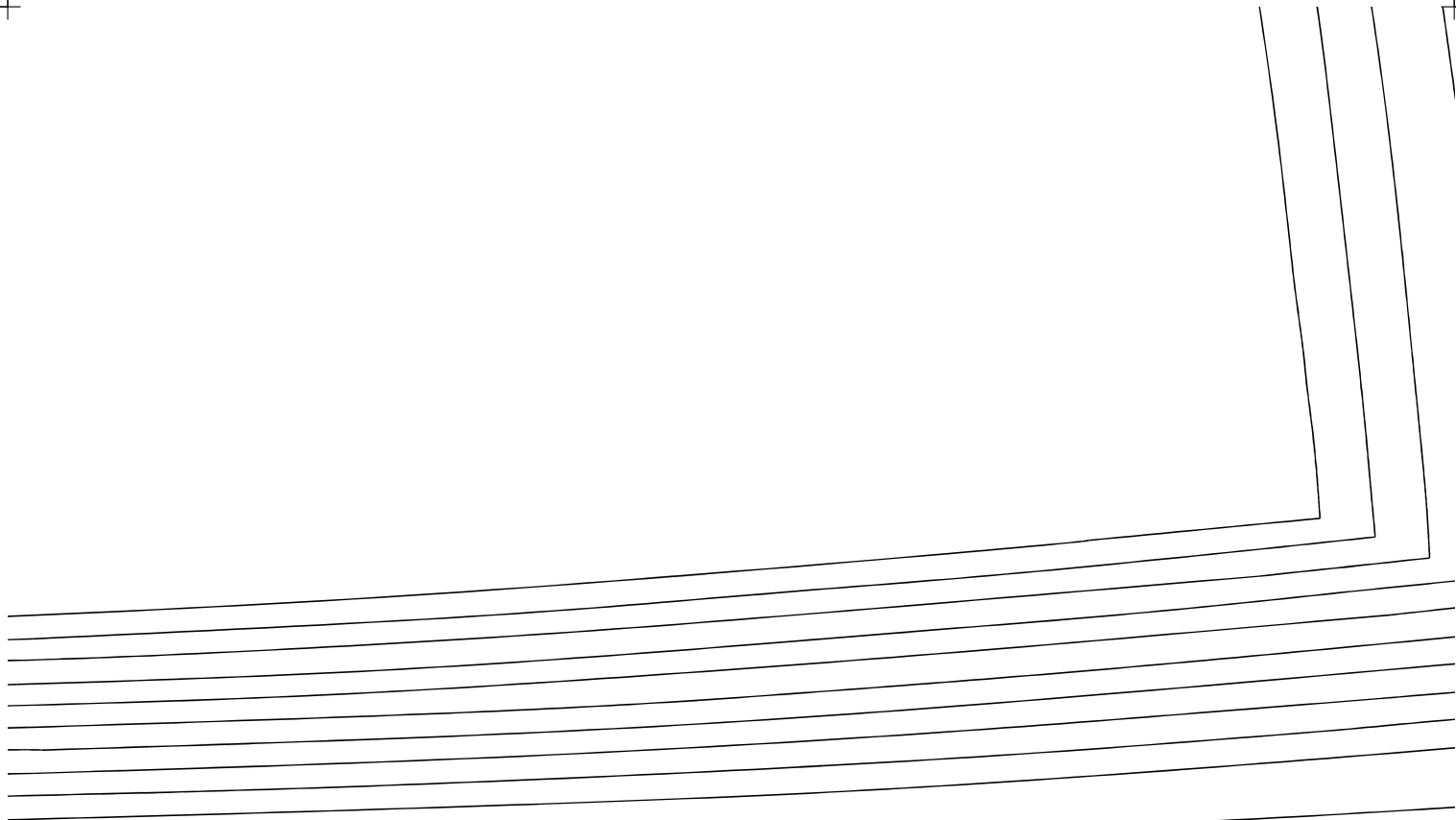
(1, 3)



3x3.2

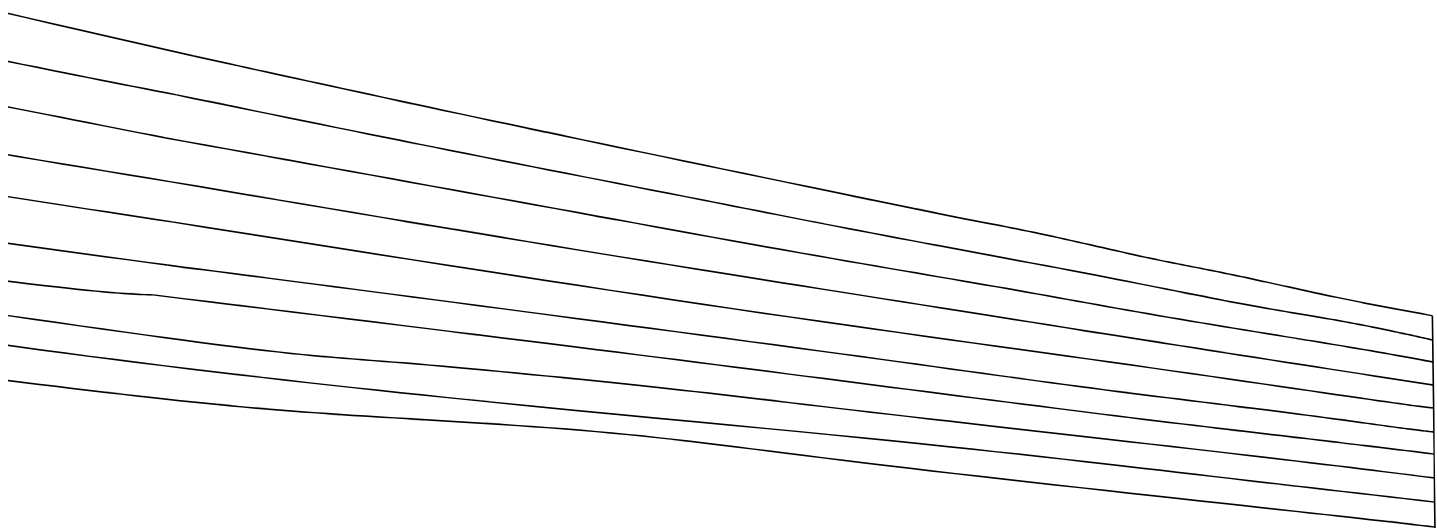




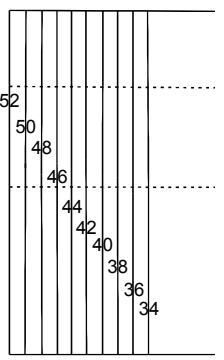
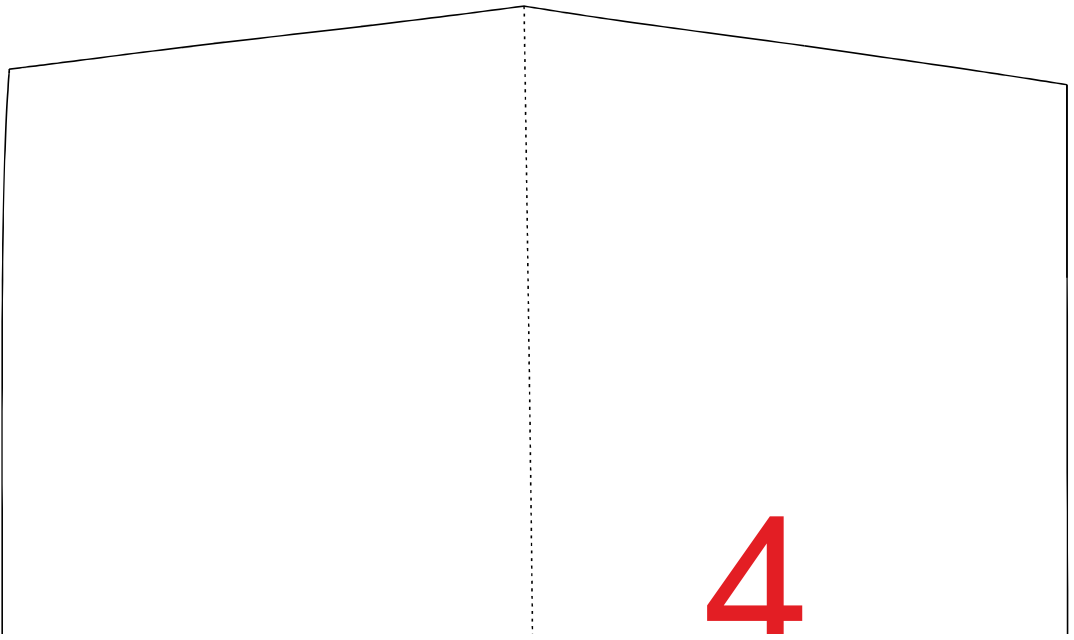
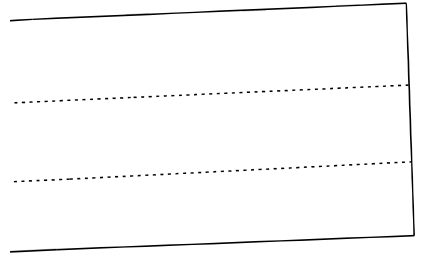
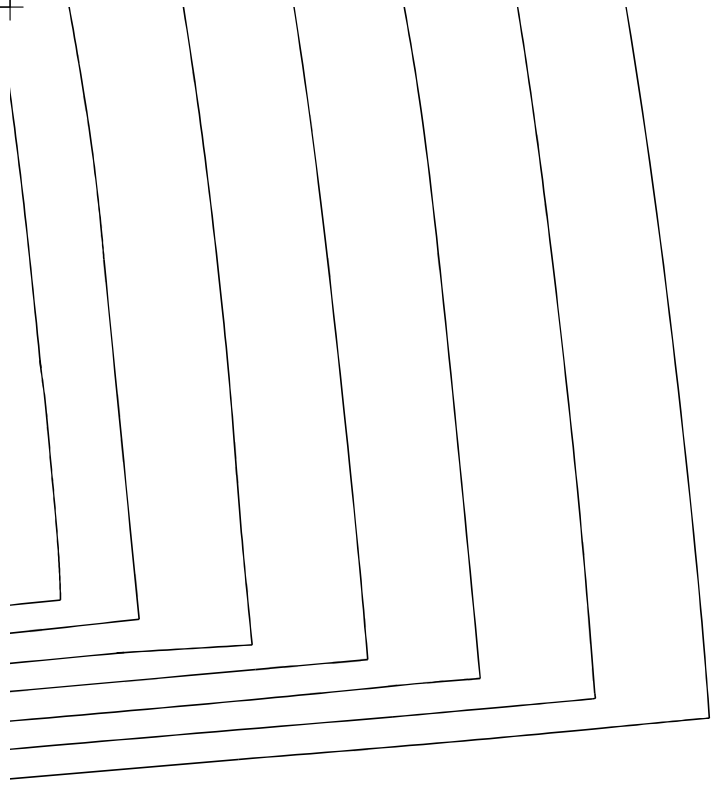


|   |    |    |    |    |    |
|---|----|----|----|----|----|
| 4 | 42 | 40 | 38 | 36 | 34 |
|---|----|----|----|----|----|

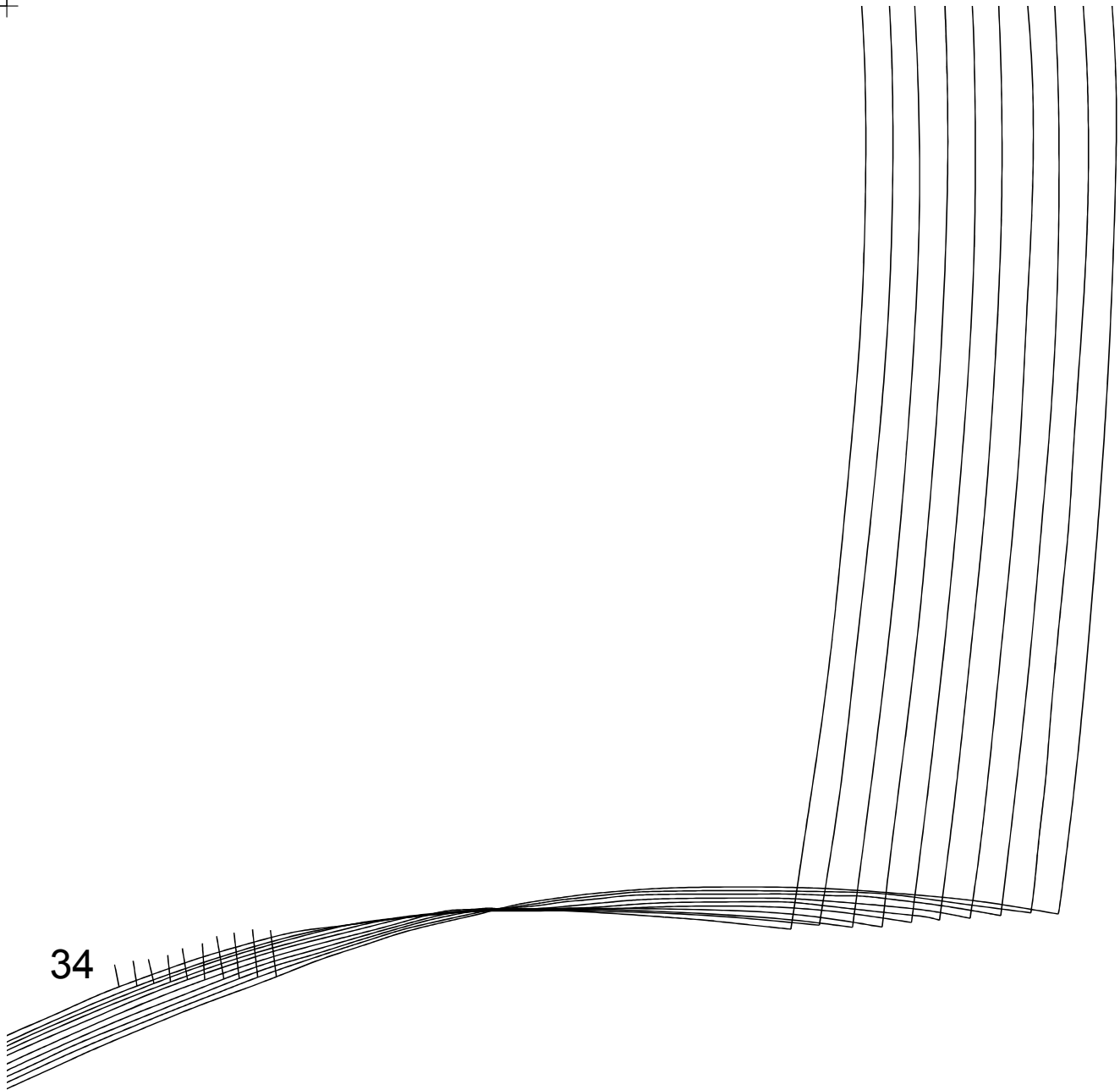
10



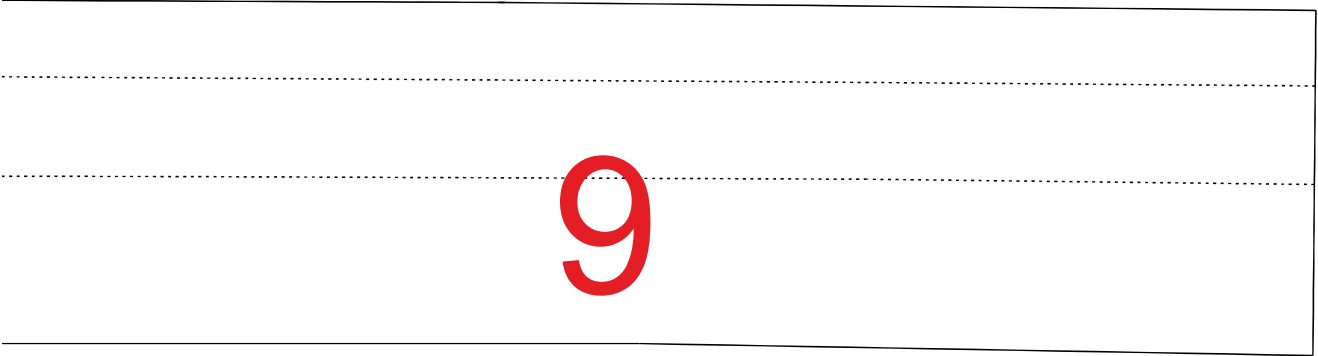
(4, 3)



4



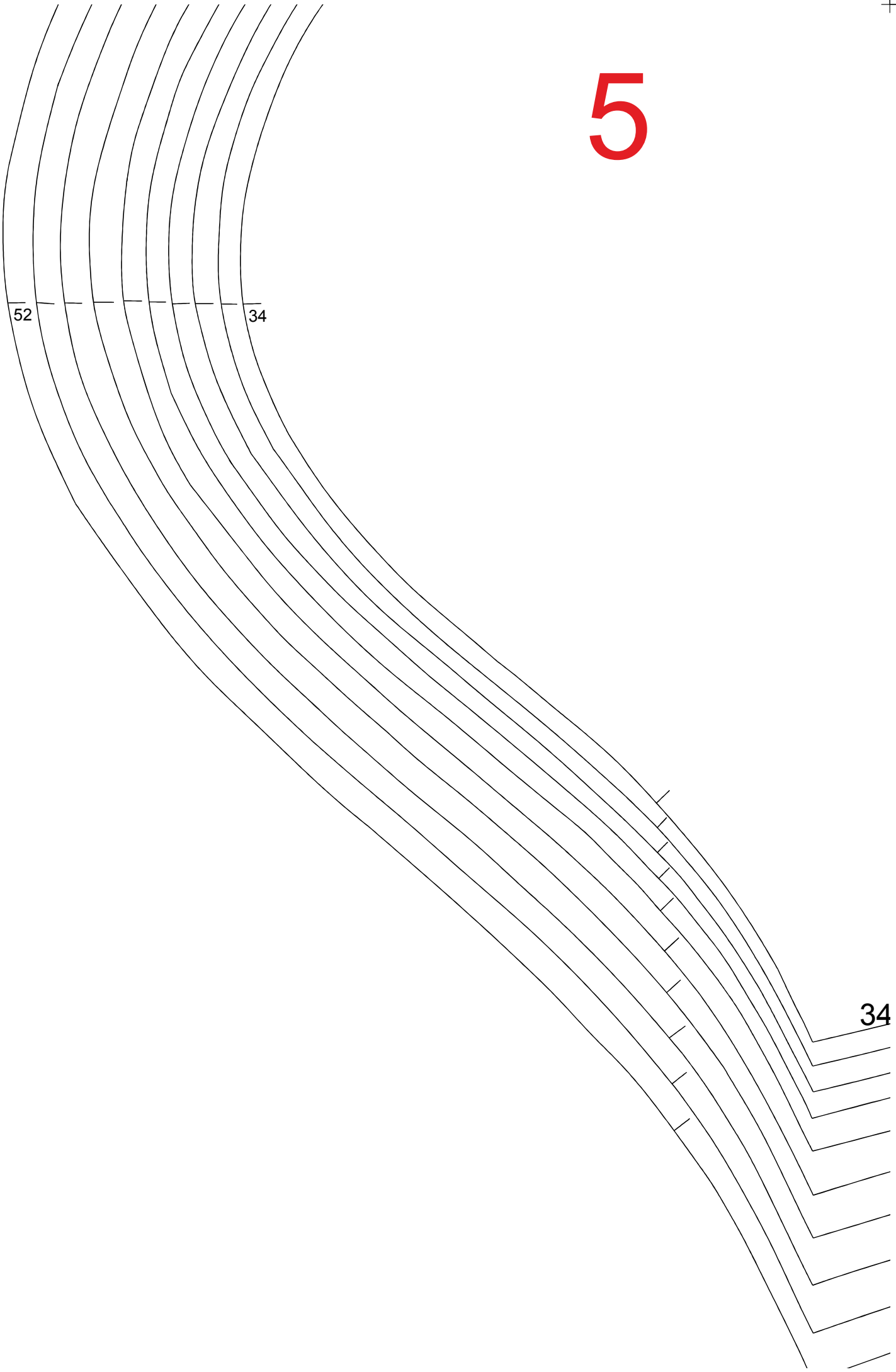
34



9



5



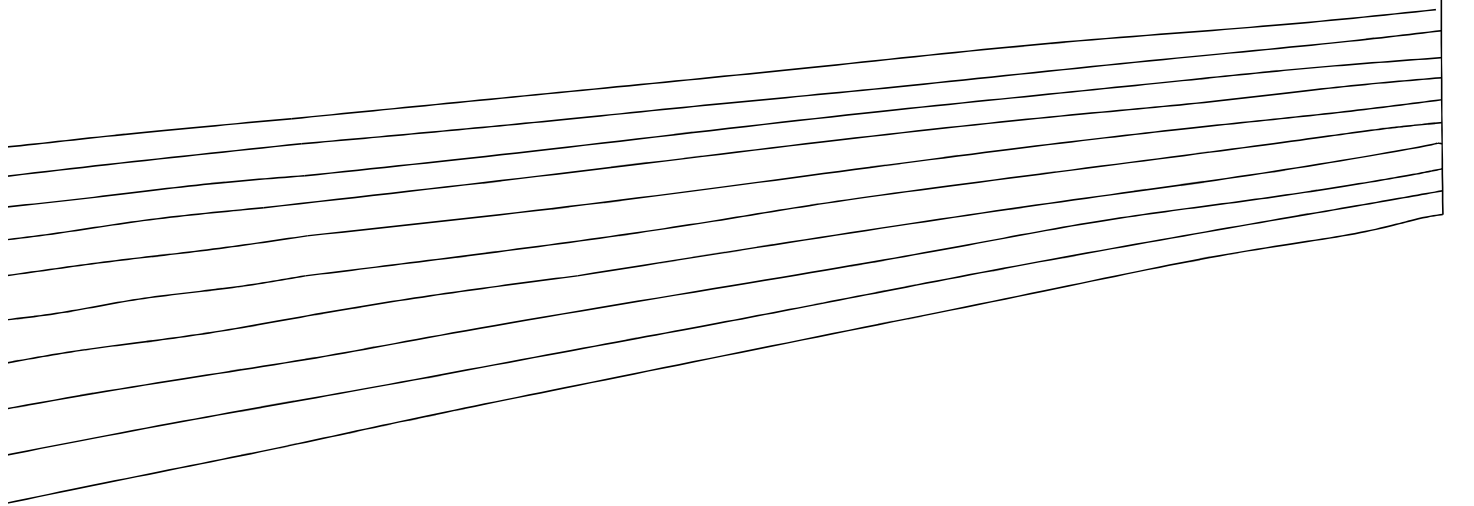
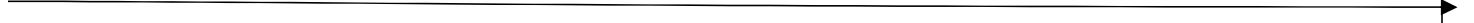
34





36  
38  
40  
42  
44  
46  
48  
50  
52

(3, 4)



(4, 4)



34

36

38

40

42

44

46

48

50

52

6

52

34

34  
36  
38  
40  
42  
44  
46  
48  
50  
52