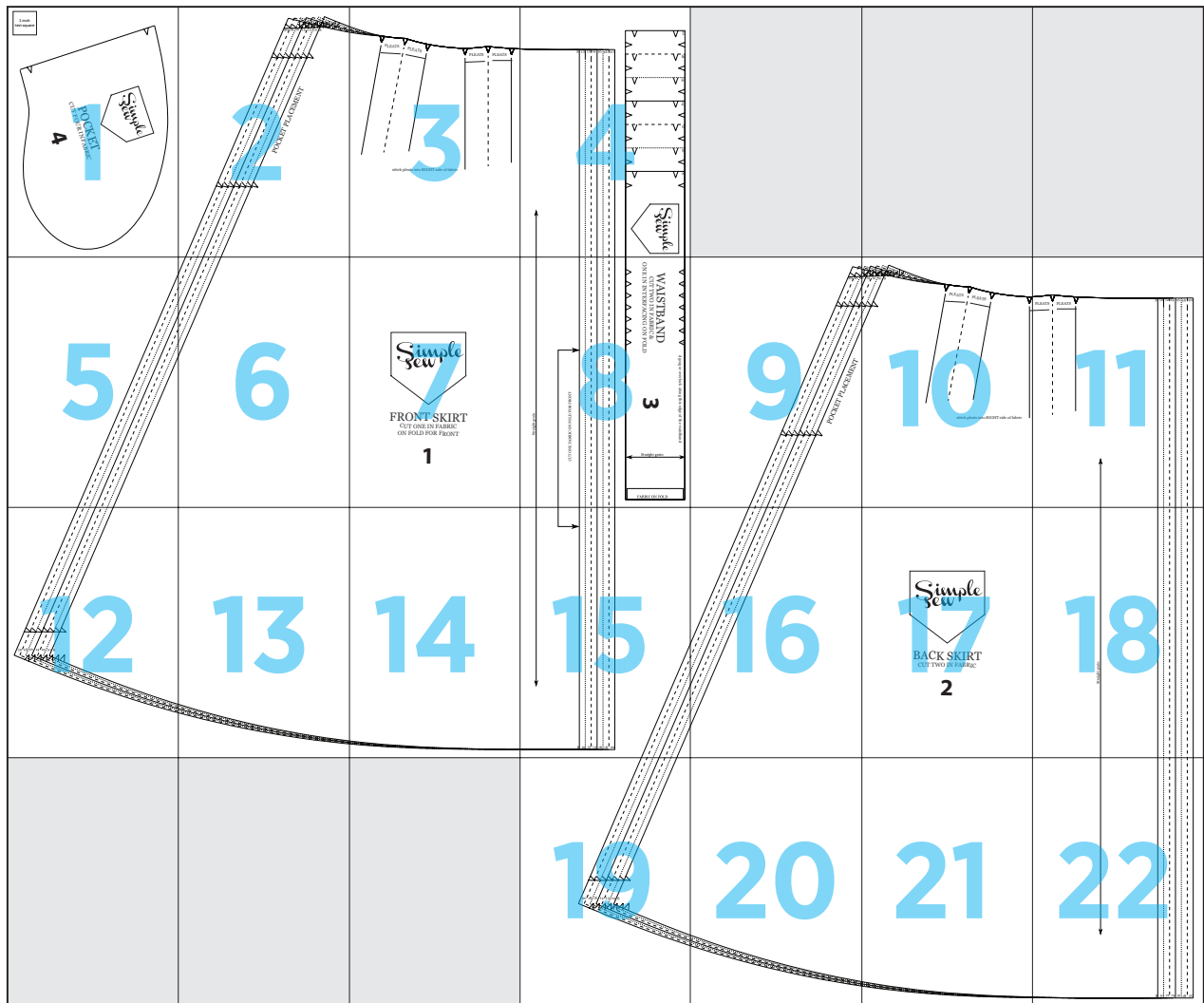
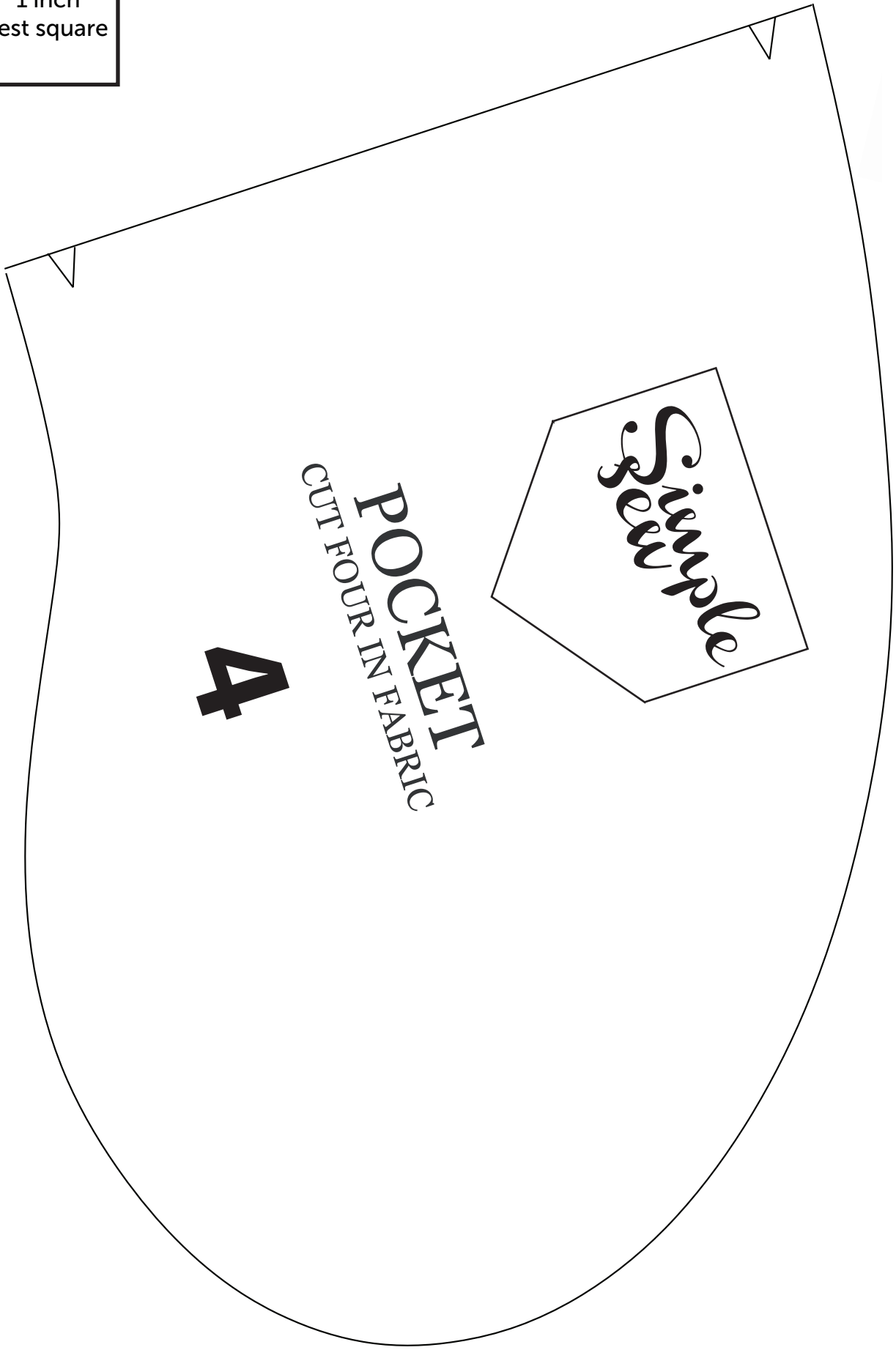


# Pleated skirt



1

1 inch  
test square

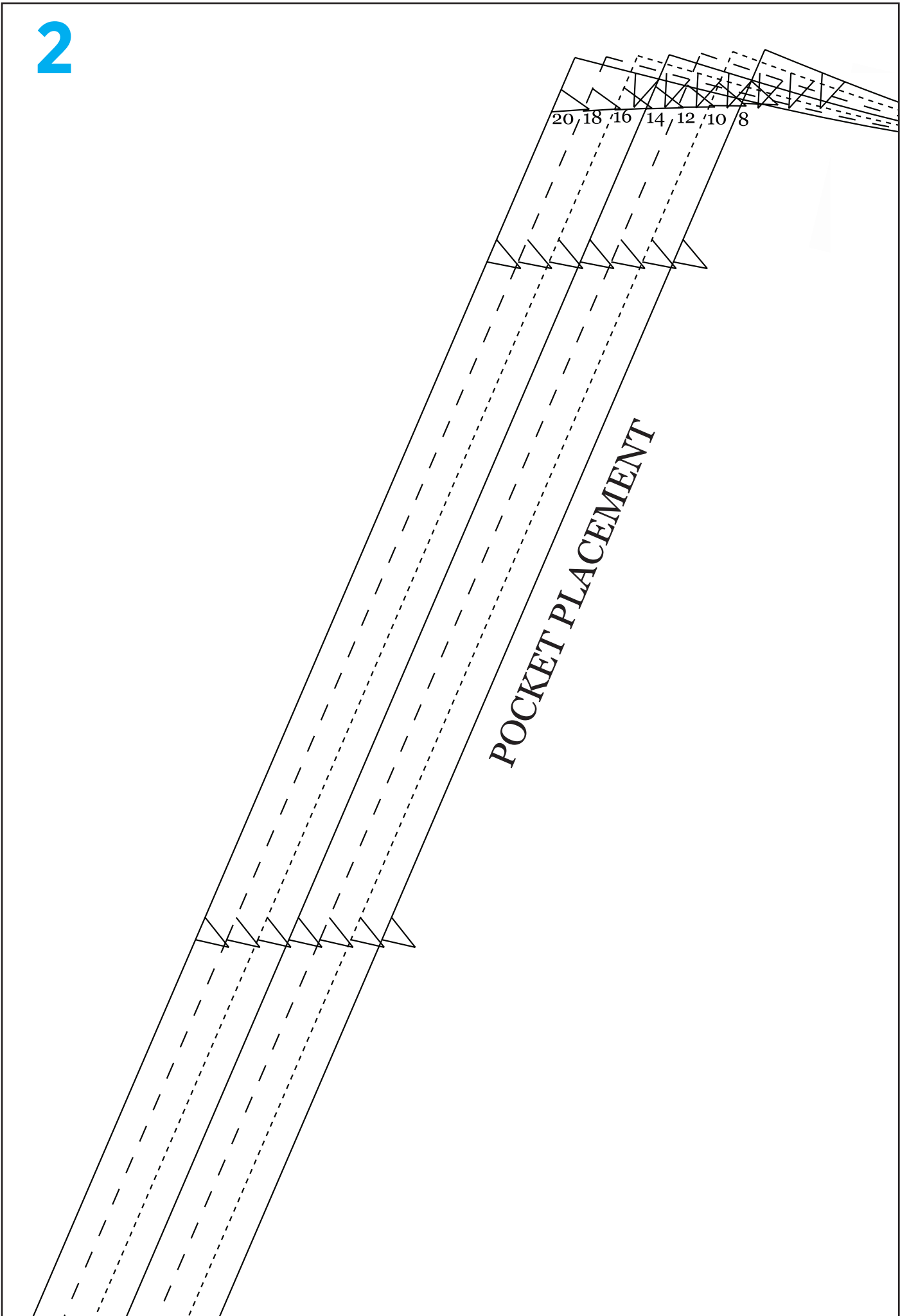


*Simple*

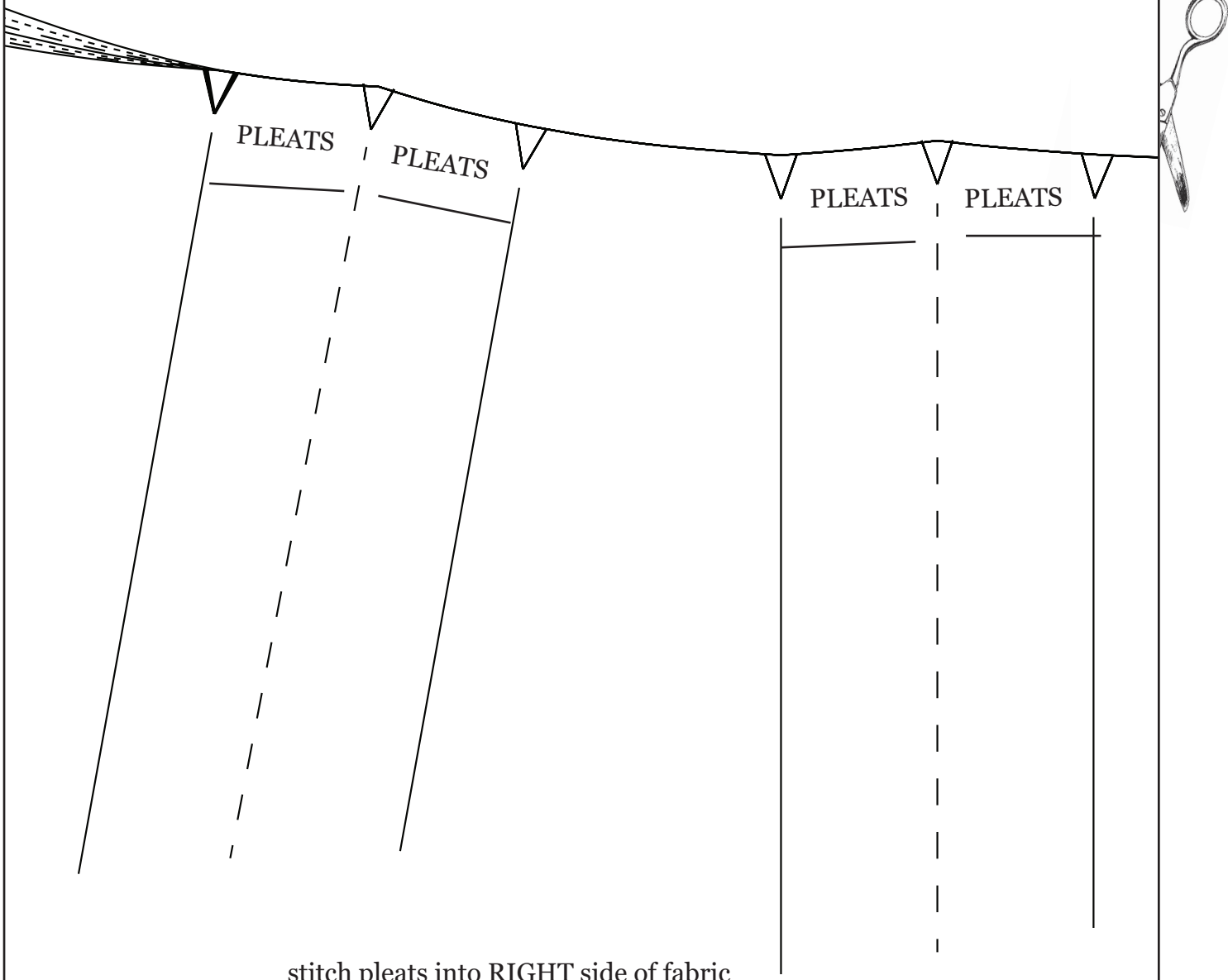
**POCKET**  
CUT FOUR IN FABRIC

**4**

2

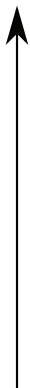


3

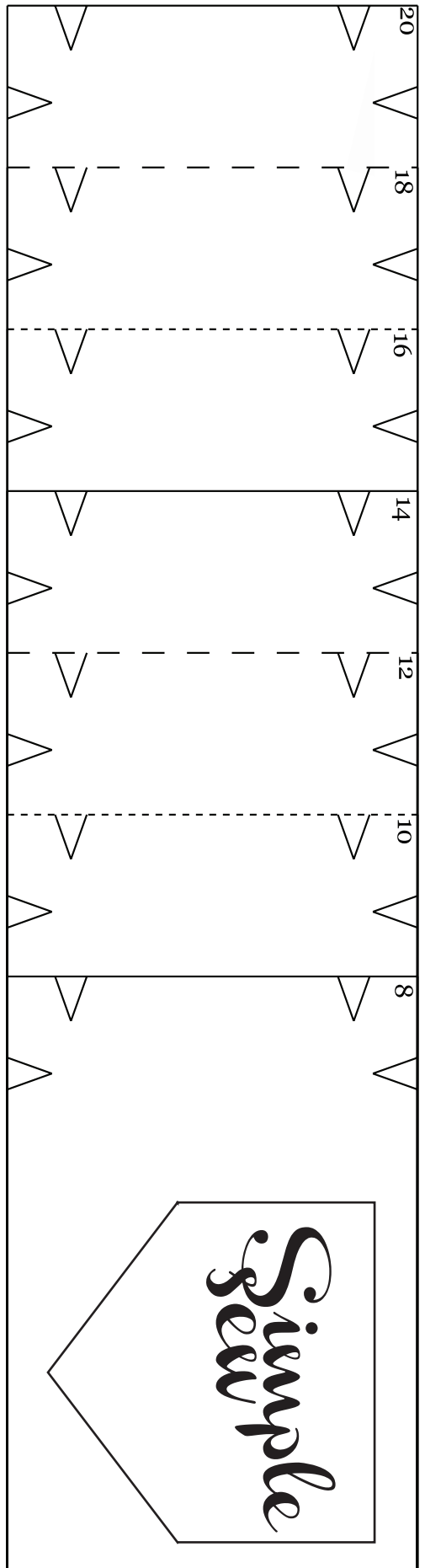


stitch pleats into RIGHT side of fabric

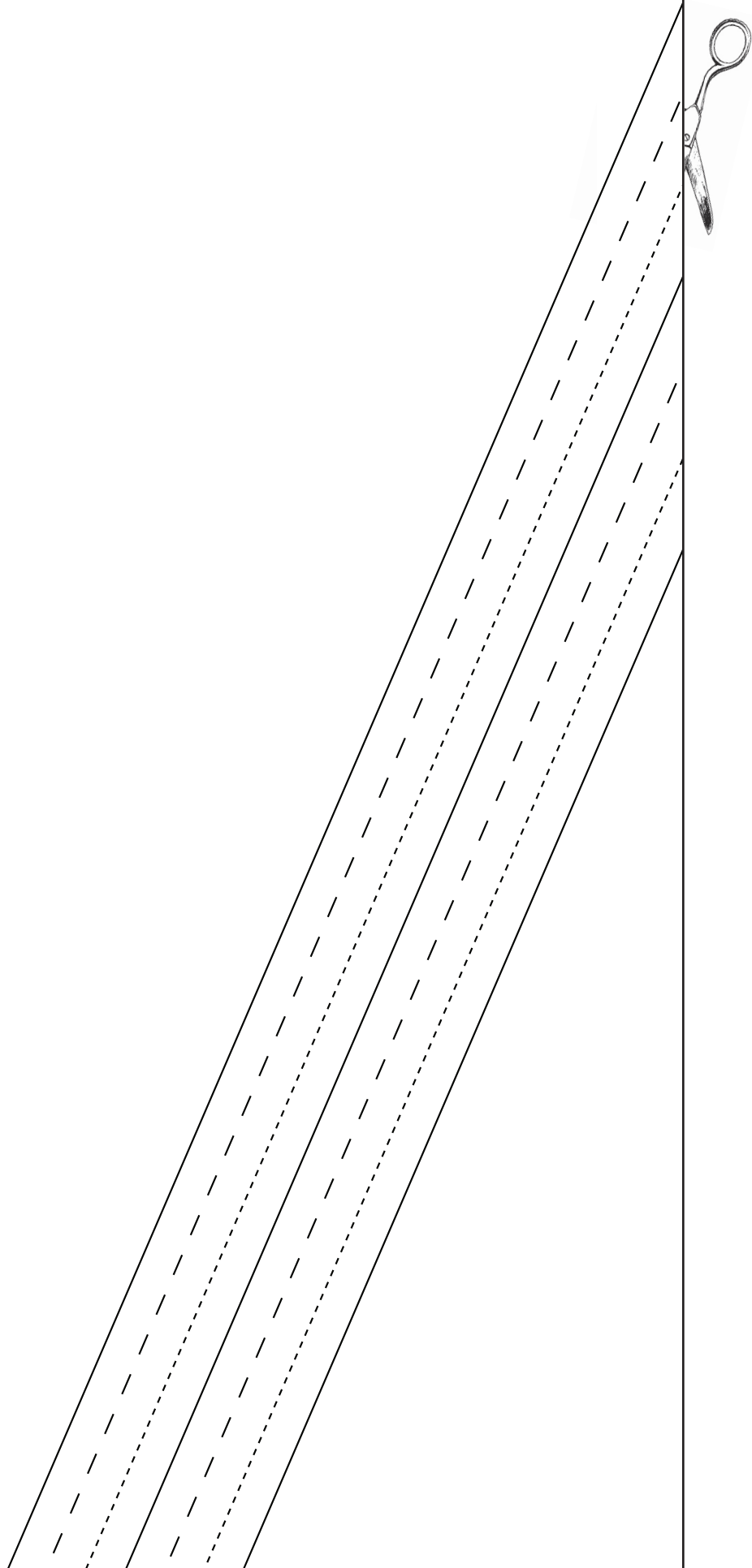
4



8 10 12 14 16 18 20



5



6



7



**FRONT SKIRT**  
CUT ONE IN FABRIC  
ON FOLD FOR FRONT

**1**





20 18 16 14 12 10 8

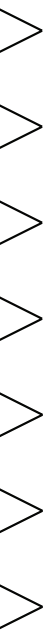
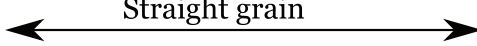
zigzag or overlock along this edge of the waistband

# WAISTBAND

CUT TWO IN FABRIC &  
ONE IN INTERFACING ON FOLD

# 3

Straight grain



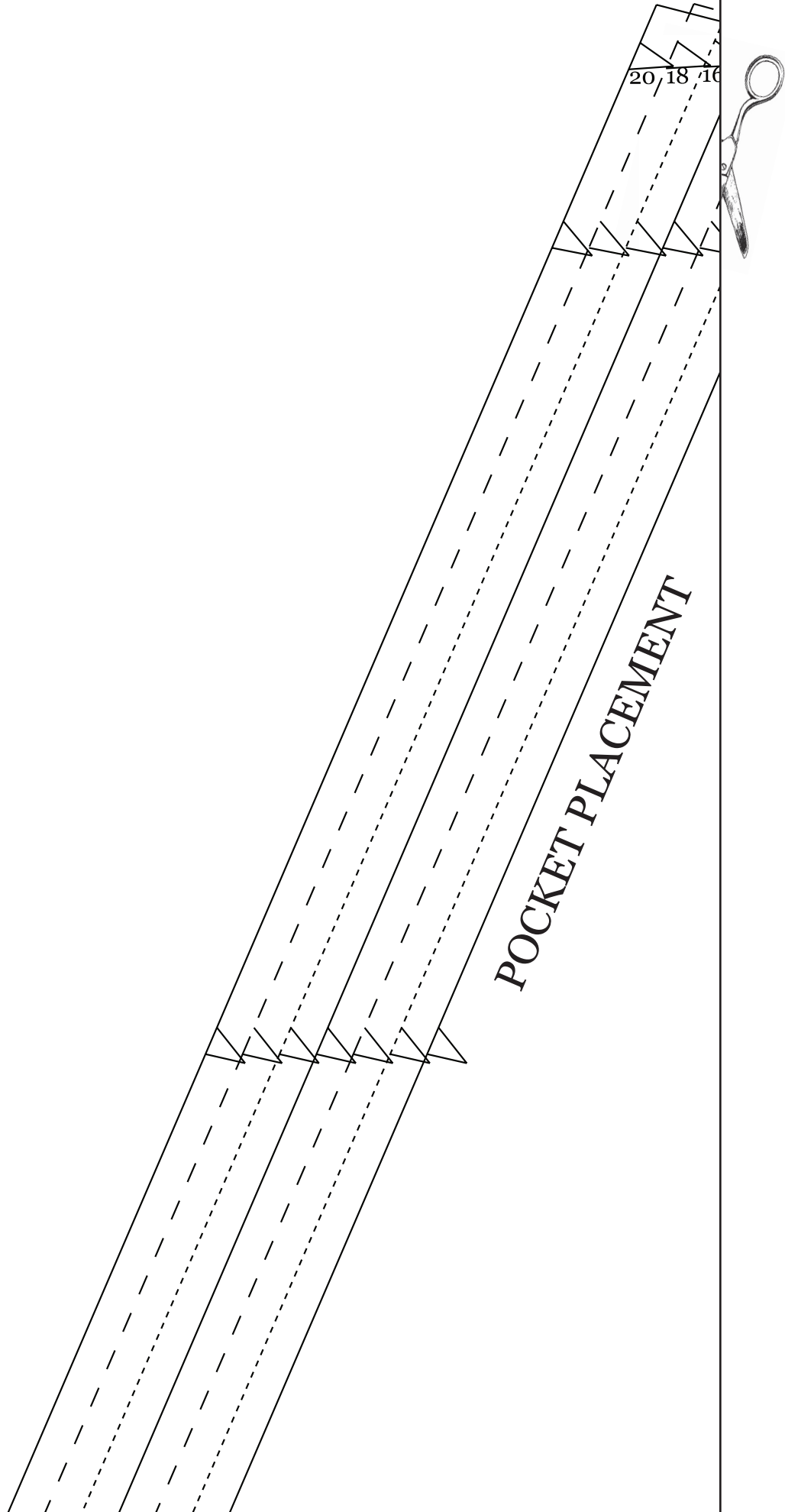
FABRIC ON FOLD

CUT ONE FABRIC ON FOLD FOR FRONT



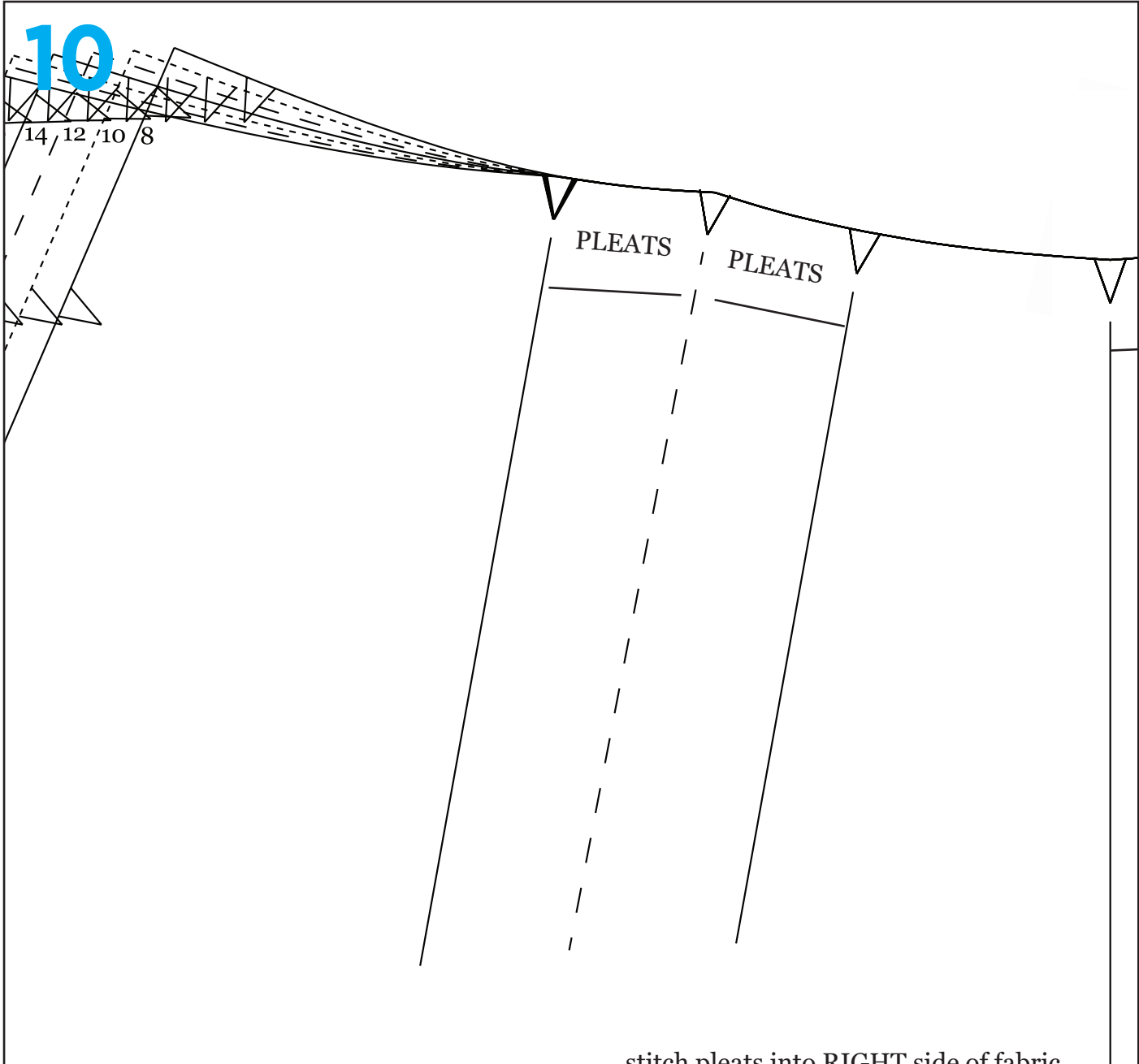
# 8

Straight grain

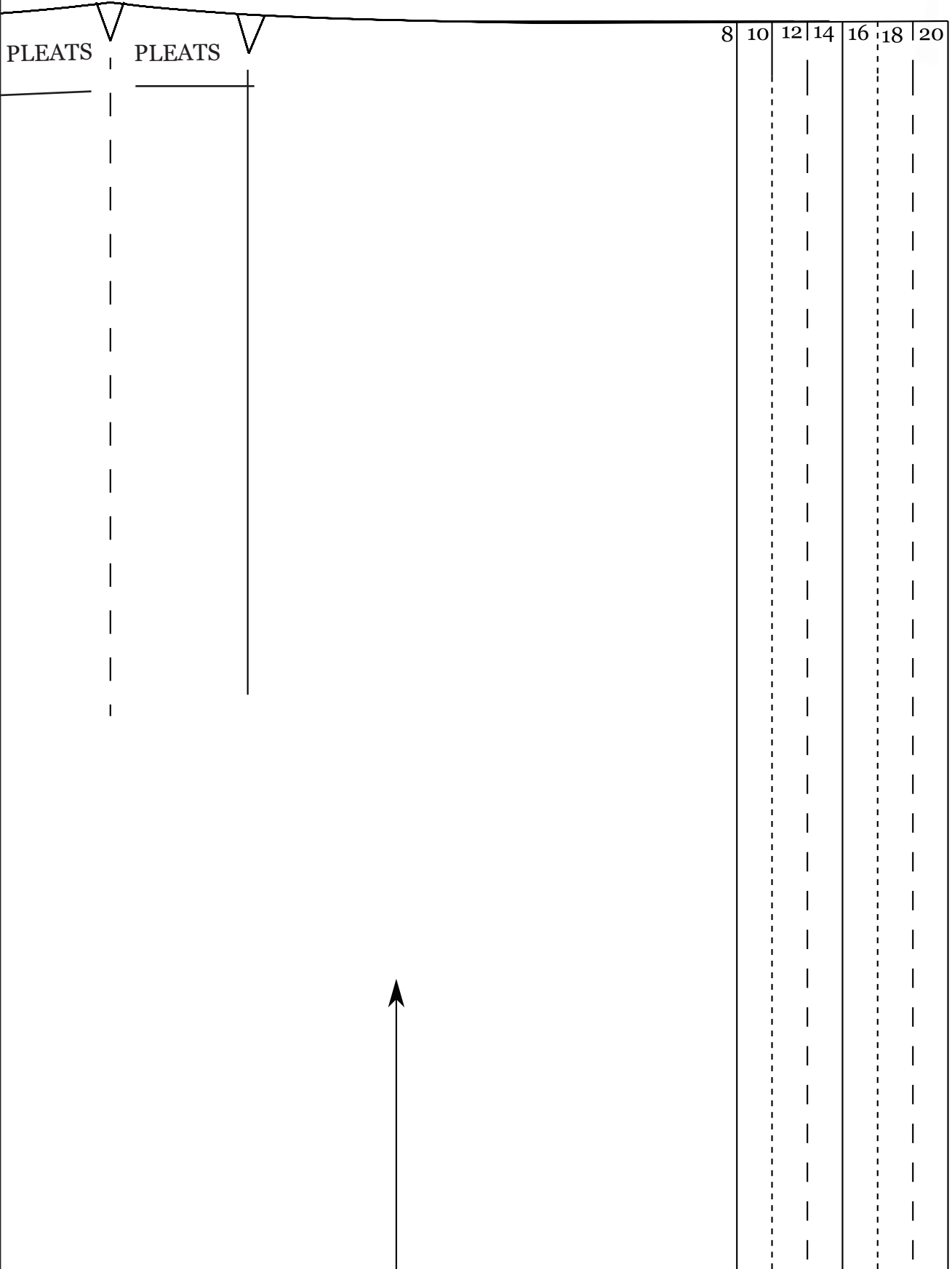


10

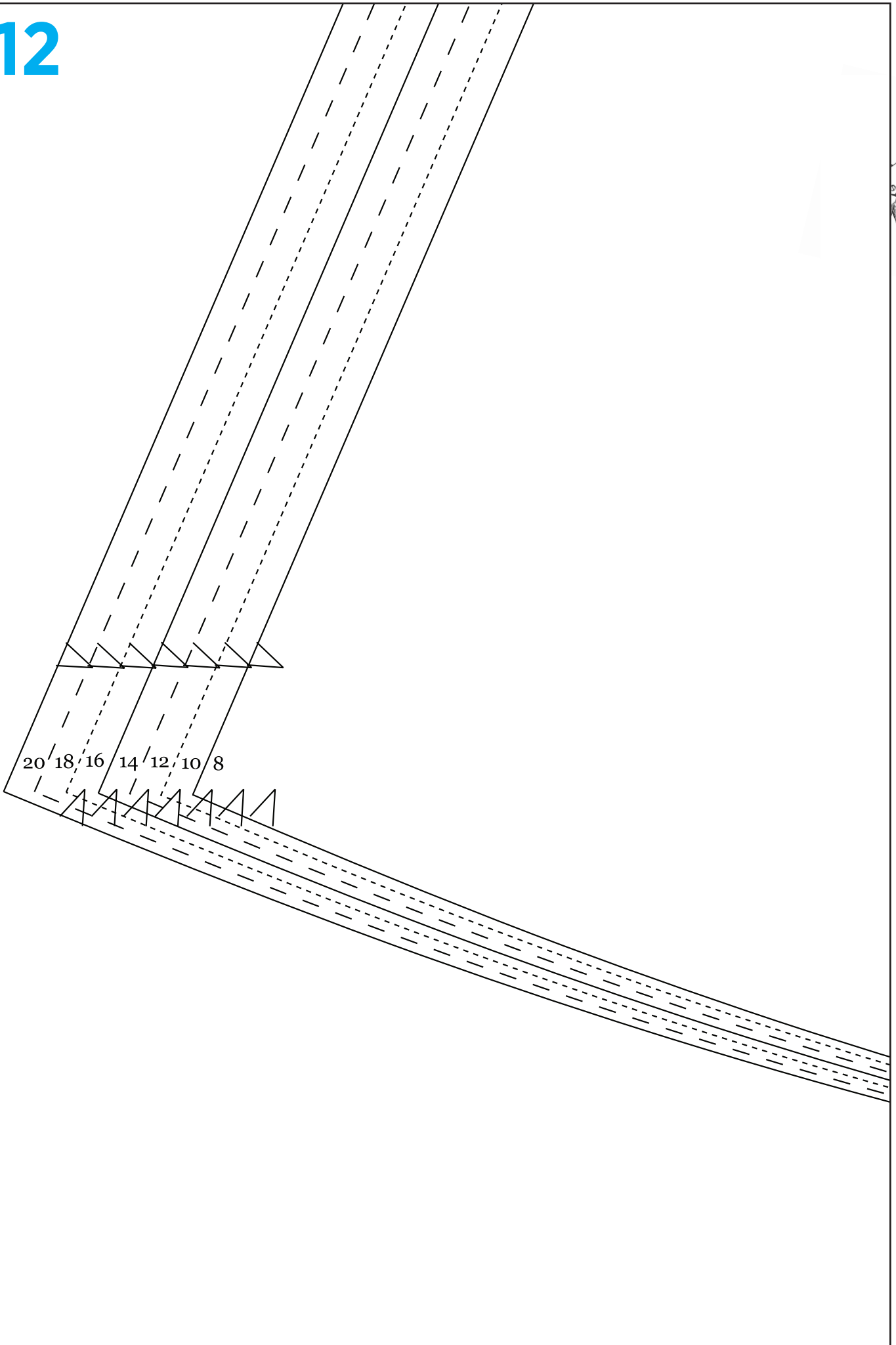
14 12 10 8

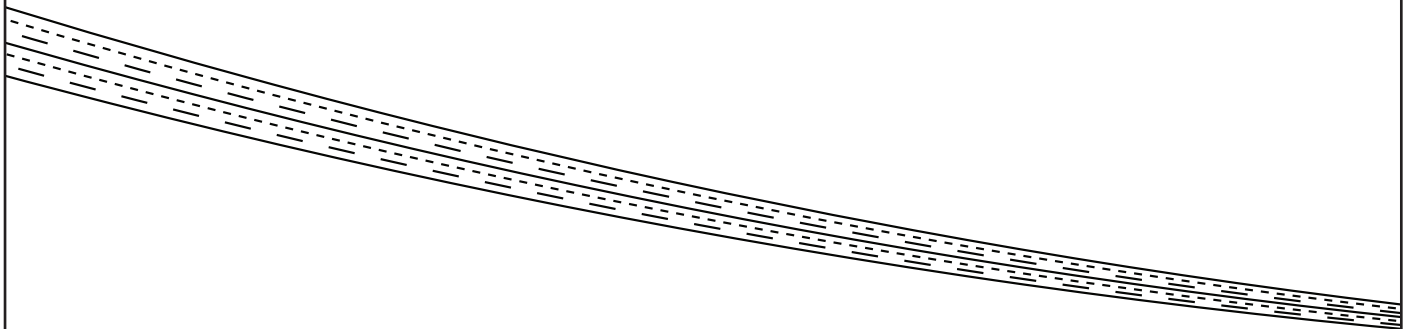


stitch pleats into RIGHT side of fabric



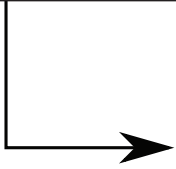
12



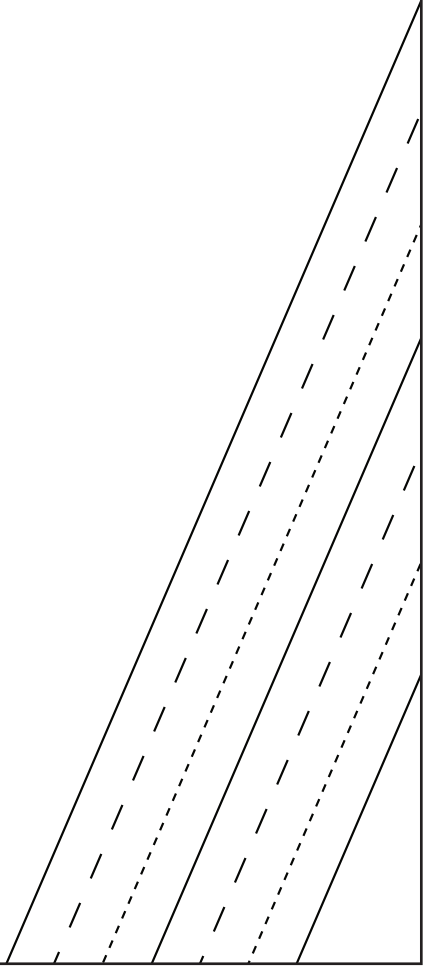




15

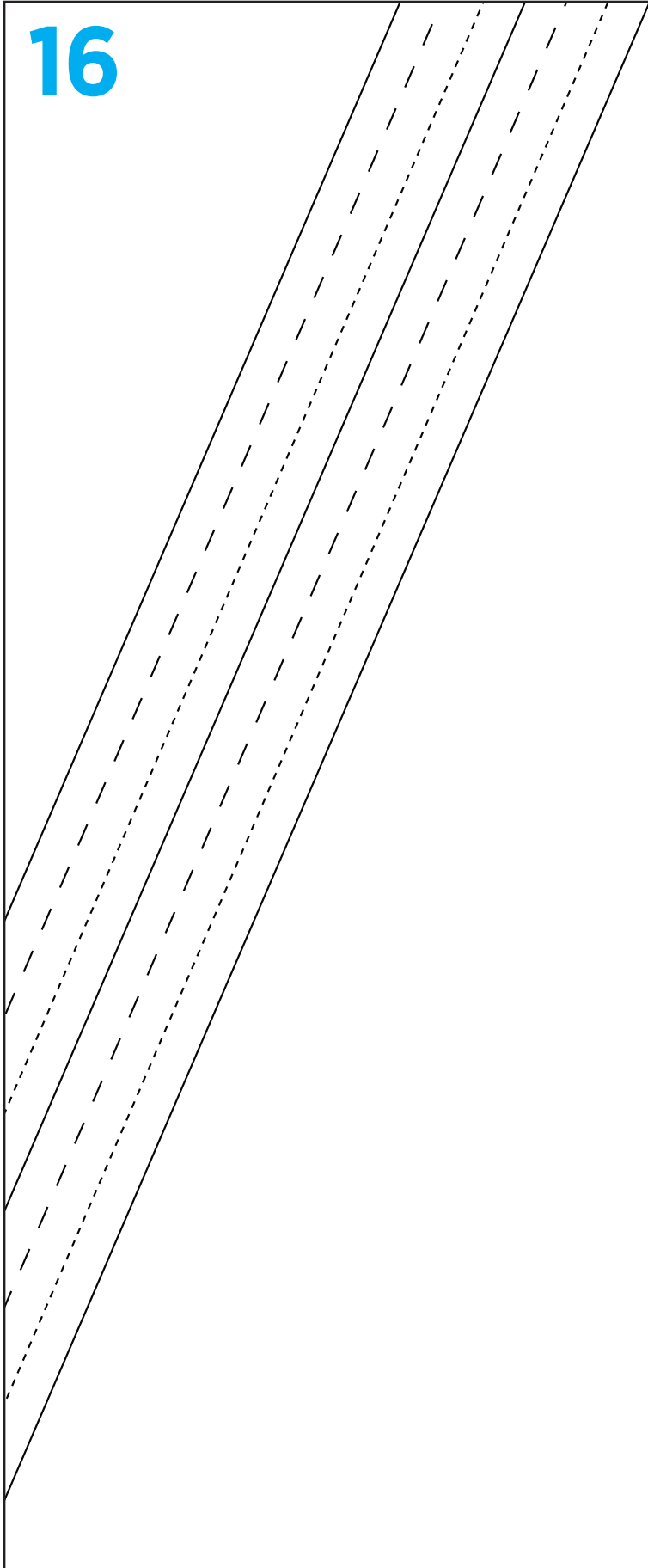


8 10 12 14 16 18 20





16



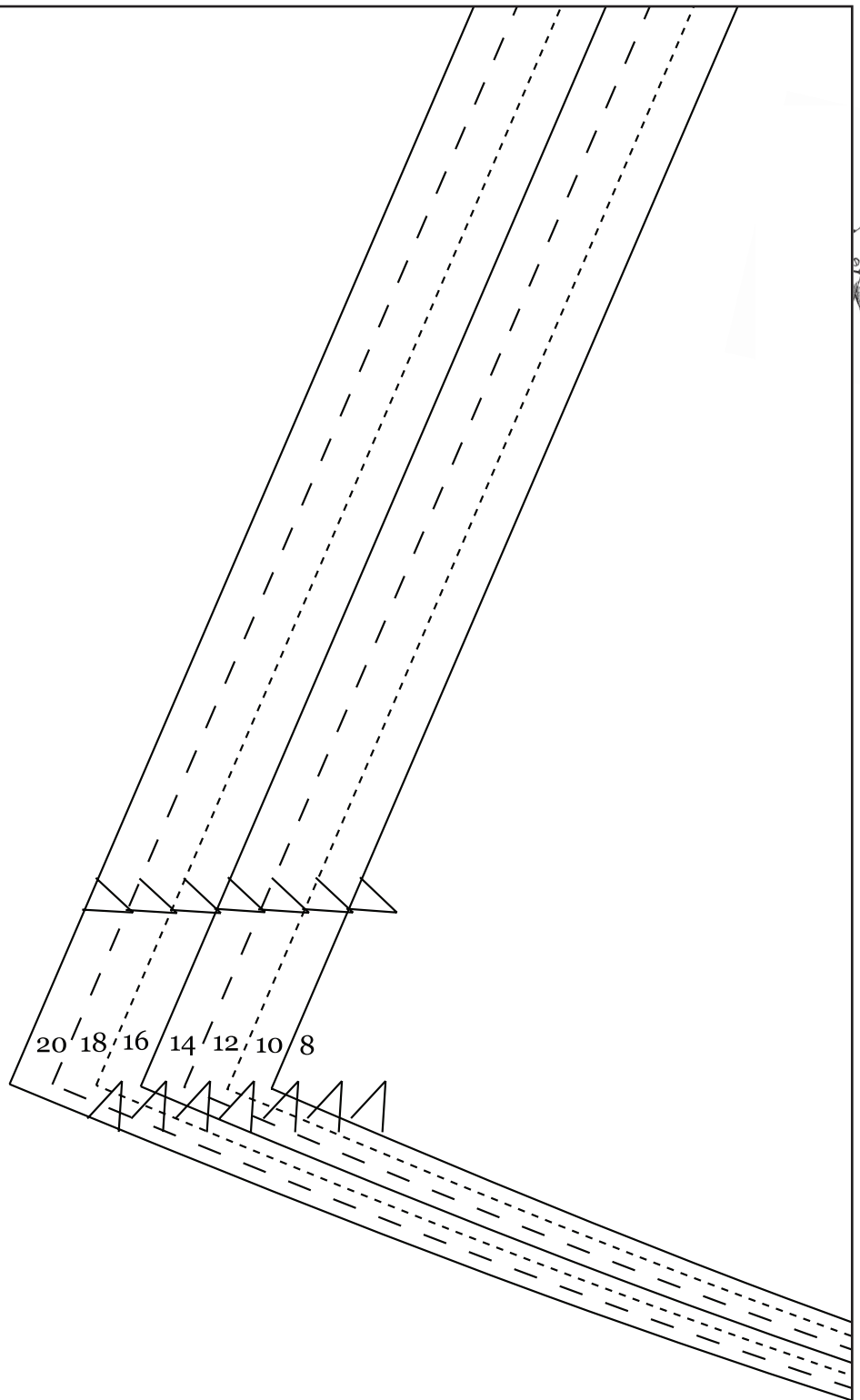


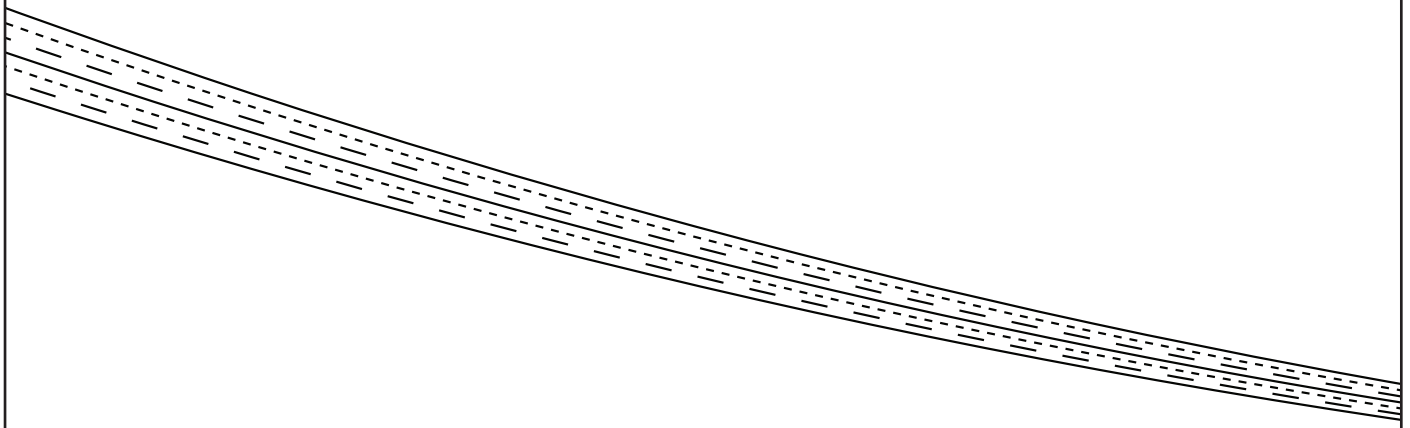
**BACK SKIRT**  
CUT TWO IN FABRIC

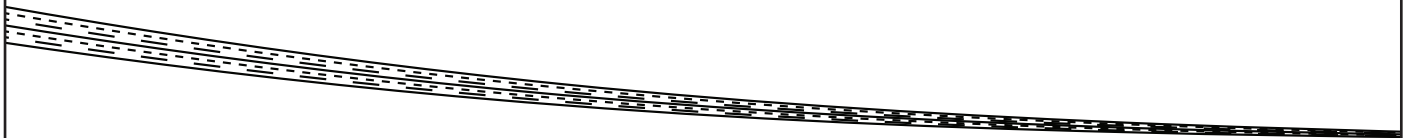
**2**

Straight grain









22



8 10 12 14 16 18 20